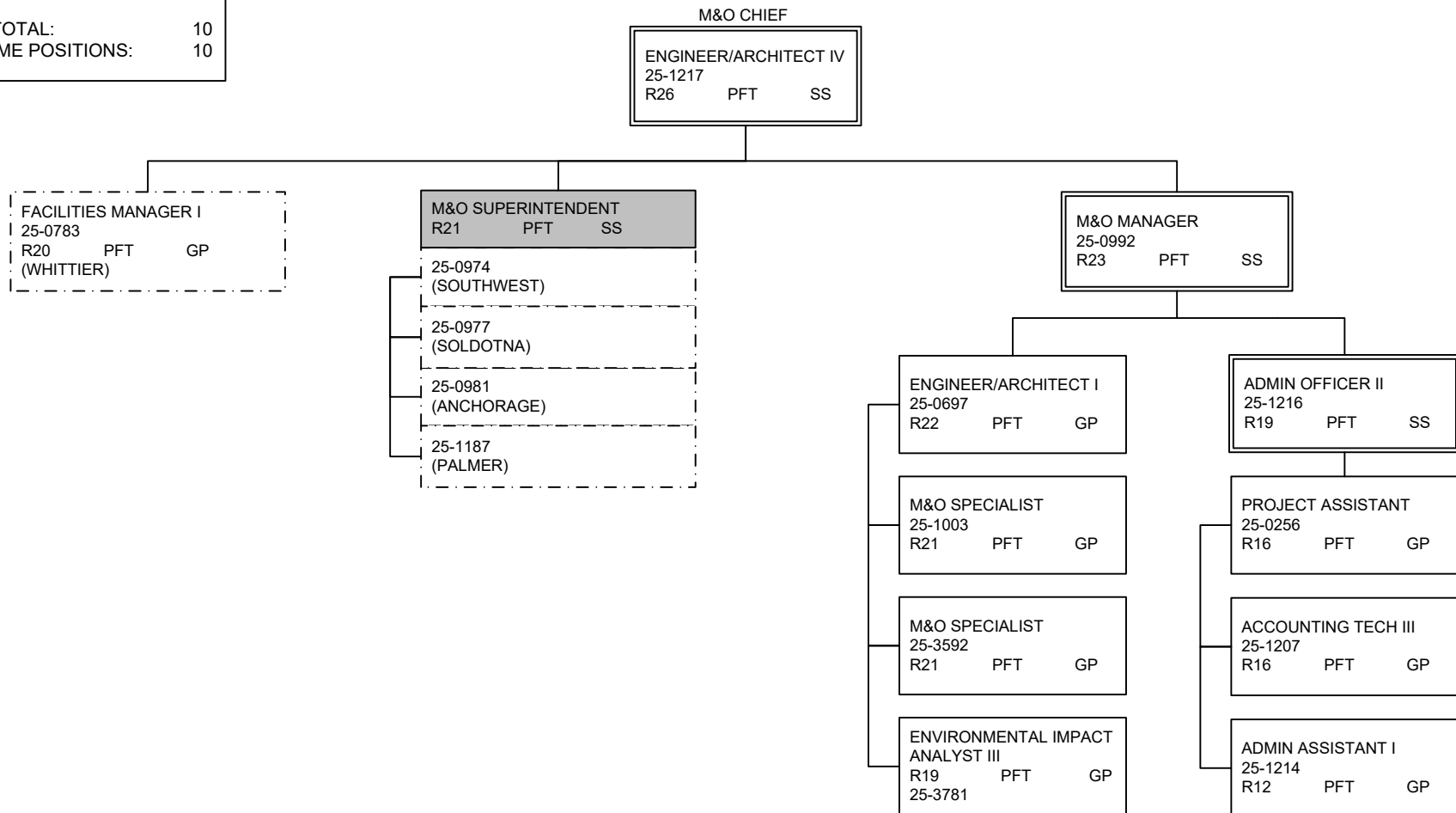


DEPARTMENT OF TRANSPORTATION AND PUBLIC FACILITIES
 RDU: HIGHWAYS, AVIATION AND FACILITIES
 COMPONENT: CENTRAL REGION HIGHWAYS & AVIATION (564)
 FY2023 GOVERNOR'S BUDGET

**MAINTENANCE &
 OPERATIONS
 ADMINISTRATION
 Anchorage**

COMPONENT TOTAL:	185
FULLTIME POSITIONS:	167
PARTTIME POSITIONS:	4
NONPERM POSITIONS:	14
PAGE TOTAL:	10
FULLTIME POSITIONS:	10



NOTE: ALL POSITIONS LOCATED IN ANCHORAGE EXCEPT WHERE NOTED.

**DEPARTMENT OF TRANSPORTATION AND PUBLIC FACILITIES
RDU: HIGHWAYS, AVIATION AND FACILITIES
COMPONENT: CENTRAL REGION HIGHWAYS & AVIATION (564)
FY2023 GOVERNOR'S BUDGET**

ANCHORAGE DISTRICT

TOTAL POSITIONS THIS DISTRICT: 55
FULL TIME POSITIONS: 47
PART TIME POSITIONS: 4
NON PERM POSITIONS: 4

ENGINEER/ARCHITECT IV
25-1217
R26 PFT SS

M&O SUPERINTENDENT
25-0981
R21 PFT SS

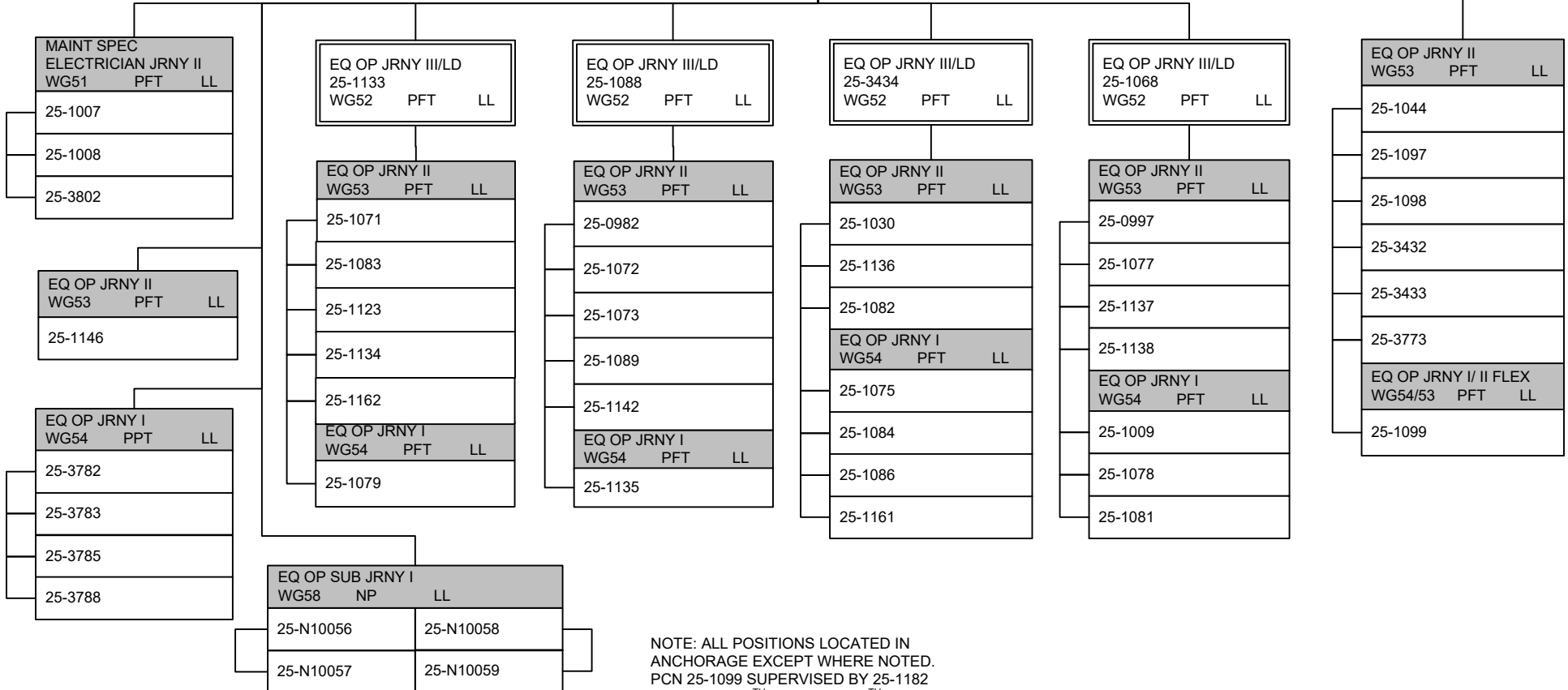
ADMIN ASSISTANT I
25-0980
R12 PFT GP

ADMIN ASSISTANT III
25-1036
R15 PFT GP

EQ OP FOREMAN II
25-1090
WG50 PFT LL

SAFETY & EMERGENCY
25-1182 S&E SUPPORT SPEC
R17 PFT GP

GIRDWOOD 2 APTS
EQ OP JRNY III/LD
25-1096
WG52 PFT LL



NOTE: ALL POSITIONS LOCATED IN ANCHORAGE EXCEPT WHERE NOTED.
PCN 25-1099 SUPERVISED BY 25-1182
FROM OCT 15TH THRU APR 15TH.

**DEPARTMENT OF TRANSPORTATION AND PUBLIC FACILITIES
RDU: HIGHWAYS, AVIATION AND FACILITIES
COMPONENT: CENTRAL REGION HIGHWAYS & AVIATION (564)
FY2023 GOVERNOR'S BUDGET**

MATSU DISTRICT

TOTAL POSITIONS THIS DISTRICT: 41
FULL TIME POSITIONS: 37
NON PERM POSITIONS: 4

ENGINEER/ ARCHITECT IV
25-1217
R26 PFT SS

NOTE: ALL POSITIONS LOCATED IN PALMER EXCEPT WHERE NOTED.
(A) AIRPORT

M&O SUPERINTENDENT
25-1187
R21 PFT SS

MAINT. SPEC. FOREMAN
25-1070
WG50 PFT LL
(BRIDGE)

MAINT SPEC ELECTR JRNY II
WG51 PFT LL
(DISTRICTWIDE)
25-0549
25-1102

ADMIN ASSISTANT III
25-0979
R15 PFT GP

ADMIN ASSISTANT I
25-0935
R12 PFT GP

CASCADE 1 AIRPORT
EQ OP JRNY III/LD
25-1109
WG52 PFT LL

CHULITNA 0 AIRPORTS
EQ OP JRNY III/LD
25-1104
WG52 PFT LL

PALMER 3 AIRPORTS
EQ OP FRMN I
25-1046
WG51 PFT LL

TALKEETNA 1 AIRPORT
EQ OP JRNY III/LD
25-1143 (A)
WG52 PFT LL

WILLOW 1 AIRPORT
EQ OP JRNY III/LD
25-1100
WG52 PFT LL

EQ OP JRNY II
WG53 PFT LL
25-1110
25-1111
25-1112

EQ OP JRNY II
WG53 PFT LL
25-1050
25-1107
25-1108
25-3649

EQ OP JRNY III/LD 25-1055 WG52 PFT LL	
EQ OP JRNY II WG53 PFT LL	
25-0985	25-1057
25-1037	25-1105
25-1047	25-1129
25-1048	25-1165
25-1052	25-1166
25-1053	25-3774
25-1056	
EQ OP SUB JRNY I WG58 NP LL	
25-N09025	25-N09027
25-N09026	25-N09028

EQ OP JRNY II
25-1106
WG53 PFT LL

EQ OP JRNY II
WG53 PFT LL
25-1101
25-1103
25-1167
25-3052

**DEPARTMENT OF TRANSPORTATION AND PUBLIC FACILITIES
RDU: HIGHWAYS, AVIATION AND FACILITIES
COMPONENT: CENTRAL REGION HIGHWAYS & AVIATION (564)
FY2023 GOVERNOR'S BUDGET**

PENINSULA DISTRICT

TOTAL POSITIONS THIS DISTRICT: 56
FULL TIME POSITIONS: 50
NON PERM POSITIONS: 6

ENGINEER/ ARCHITECT IV
25-1217
R26 PFT SS

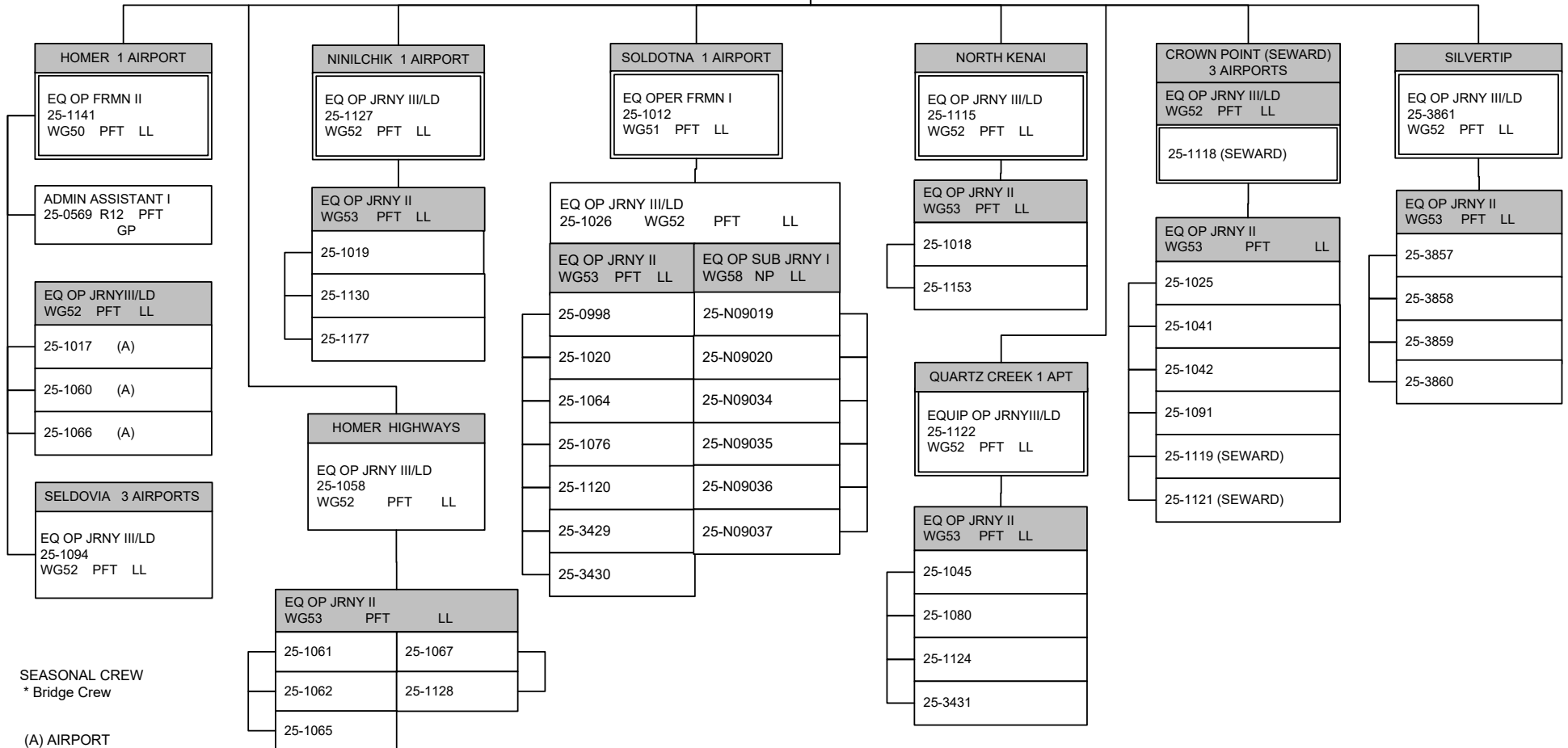
M&O SUPERINTENDENT
25-0977
R21 PFT SS

MTN SPEC ELECT JRNY II
WG51 PFT LL
(DISTRICTWIDE)
25-0565
25-1021

ADMIN ASSISTANT III
25-1010
R15 PFT GG

ADMIN ASSISTANT I
25-0983
R12 PFT GP

NOTE: ALL POSITIONS
LOCATED IN
SOLDOTNA EXCEPT
WHERE NOTED.



SEASONAL CREW
* Bridge Crew

(A) AIRPORT

**DEPARTMENT OF TRANSPORTATION AND PUBLIC FACILITIES
RDU: HIGHWAYS, AVIATION AND FACILITIES
COMPONENT: CENTRAL REGION HIGHWAYS & AVIATION (564)
FY2023 GOVERNOR'S BUDGET**

SOUTHWEST DISTRICT

TOTAL POSITIONS THIS DISTRICT 23
FULL TIME POSITIONS 23

ENGINEER/ARCHITECT IV
25-1217
R26 PFT SS

M&O SUPERINTENDENT
25-0974
R21 PFT SS

ADMIN ASSISTANT III
25-1169
R15 PFT GP

ANIAK 7 AIRPORTS

EQ OP FRMN I
25-1000 (A)
WG51 PFT LL

EQ OP JRNY II
25-1152 (A)
WG53 PFT LL

BETHEL 27 AIRPORTS

AIRPORT OPER SPEC
25-3573
R19 PFT SS

RURAL AIRPORT FRMN
25-1004 (A)
WG49 PFT LL

OFFICE ASSISTANT II
25-1185
R10 PFT GP

EQ OP JRNY I/II/III/LD WG52/53/54 PFT LL		
25-1022	25-3811	(A)
25-1085	25-3812	(A)
25-3639 (A)	25-3813	
	25-3814	(A)

MCGRATH 6 AIRPORTS

EQ OP FRMN I
25-1150 (A)
WG51 PFT LL

DILLINGHAM 12 AIRPORTS

RURAL AIRPORT FRMN
25-1038 (A)
WG49 PFT LL

OFFICE ASSISTANT II
25-1156 (A)
R10 PFT GP

EQ OP JRNY III/LD WG52 PFT LL	
25-1087	(A)
25-1144	(A)
25-1145	
25-3717	
25-1051	(A)
EQ OP JRNY I/II/III/LD WG52/53/54 PFT LL	
25-1039	(A)

NOTE: POSITIONS LOCATED IN ANCHORAGE EXCEPT WHERE NOTED.
(A) AIRPORT