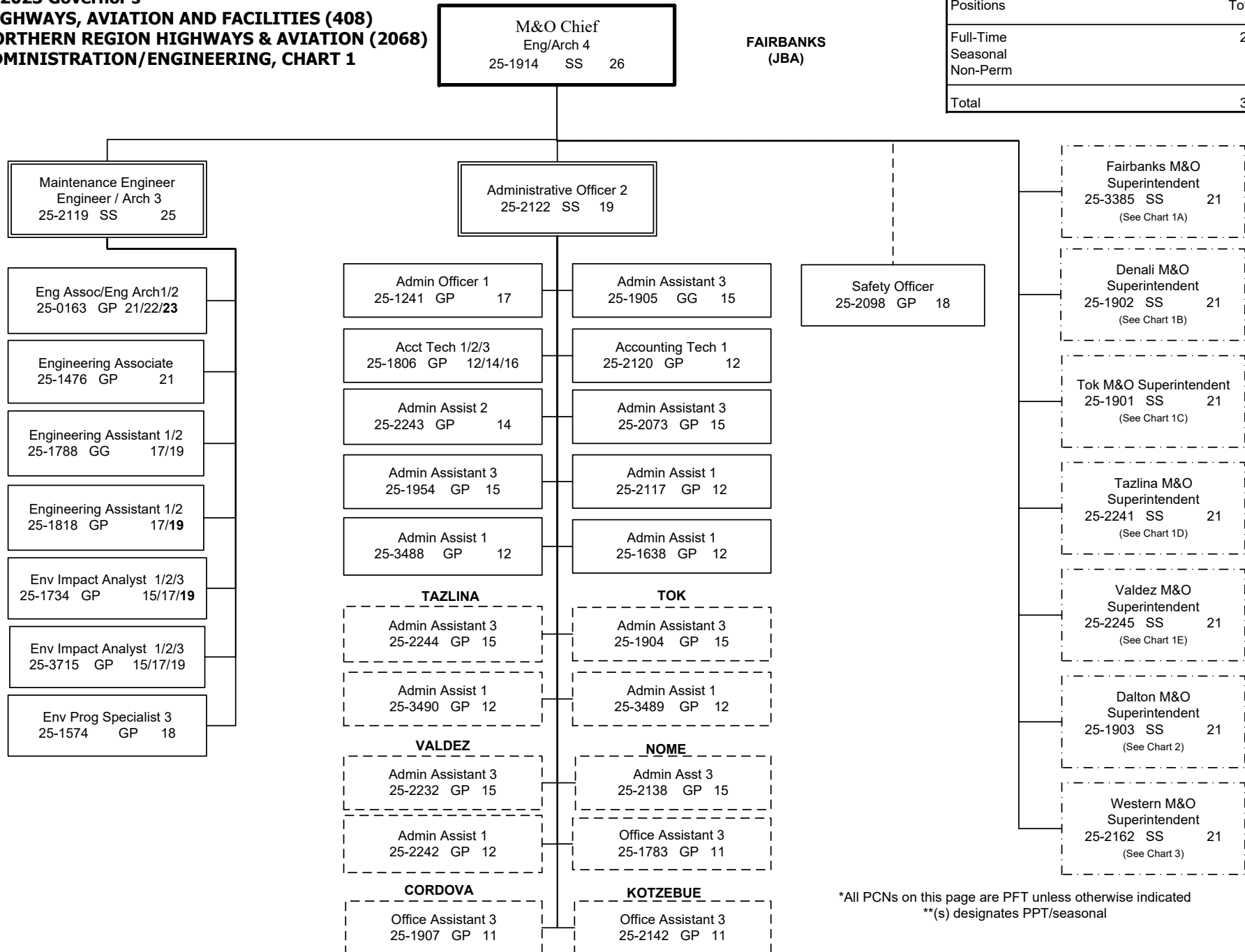


**FY2023 Governor's
HIGHWAYS, AVIATION AND FACILITIES (408)
NORTHERN REGION HIGHWAYS & AVIATION (2068)
ADMINISTRATION/ENGINEERING, CHART 1**

NORTHERN REGION HIGHWAYS & AVIATION	
Positions	Total
Full-Time	255
Seasonal	51
Non-Perm	20
Total	326

**FAIRBANKS
(JBA)**



*All PCNs on this page are PFT unless otherwise indicated
**(s) designates PPT/seasonal

**FY2023 Governor's
HIGHWAYS, AVIATION AND FACILITIES (408)
NORTHERN REGION HIGHWAYS & AVIATION (2068)
FAIRBANKS DISTRICT, CHART 1A**

**FAIRBANKS
(JBA)**

Eng/Arch 4
25-1914 SS 26

Fairbanks M&O Superintendent
25-3385 SS 21

Equipment Operator (F2)
25-1919 LL 50

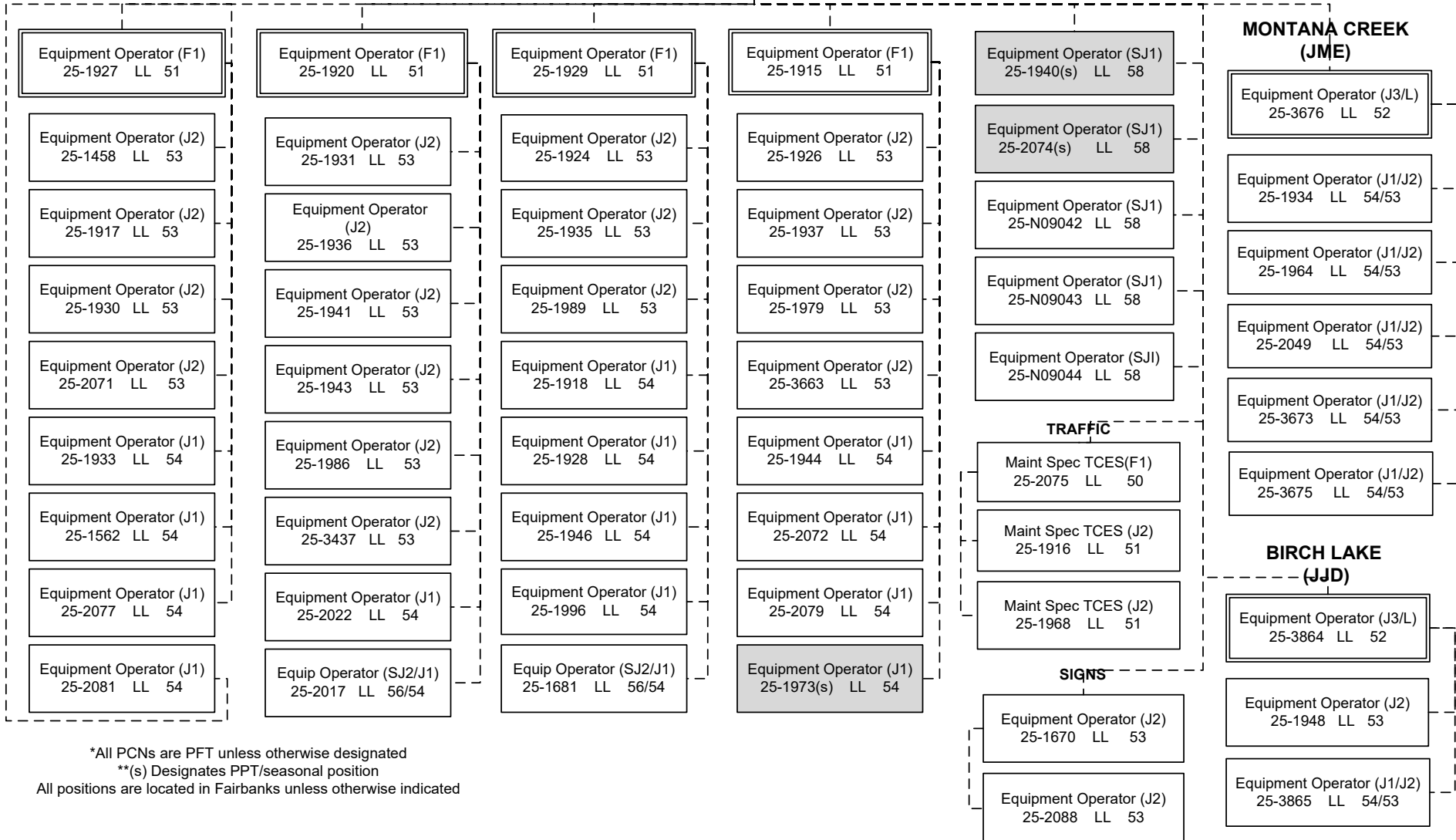
Admin Assistant 3
25-1905 GG 15

Accounting Tech 1
25-2120 GP 12

Stock & Part Svcs 3
25-1225 LL 54

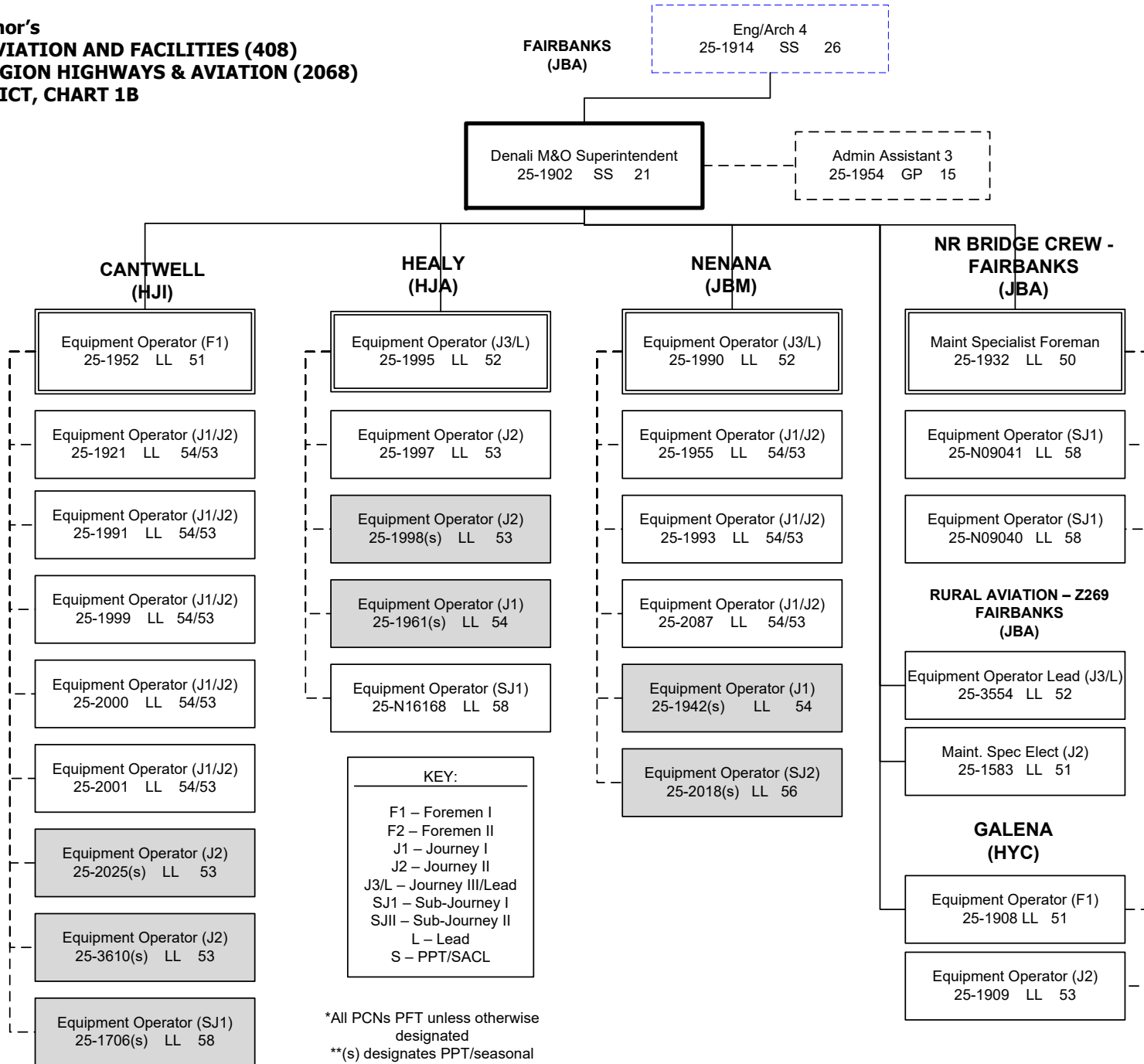
KEY:

F1 – Foremen I
F2 – Foremen II
J1 – Journey I
J2 – Journey II
J3/L – Journey III/Lead
SJ1 – Sub-Journey I
SJII – Sub-Journey II
L – Lead
S – PPT/SACL

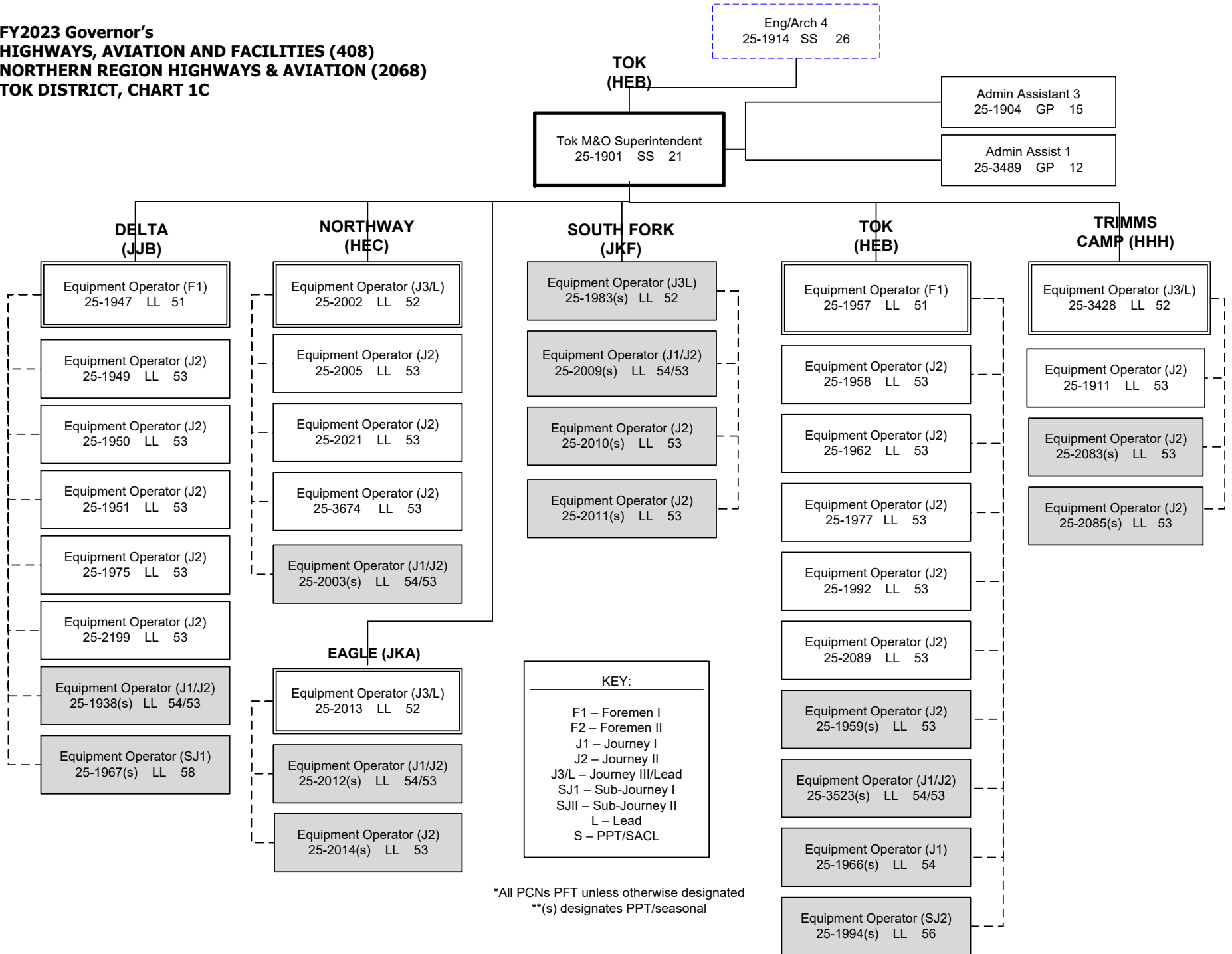


*All PCNs are PFT unless otherwise designated
 **(s) Designates PPT/seasonal position
 All positions are located in Fairbanks unless otherwise indicated

**FY2023 Governor's
HIGHWAYS, AVIATION AND FACILITIES (408)
NORTHERN REGION HIGHWAYS & AVIATION (2068)
DENALI DISTRICT, CHART 1B**

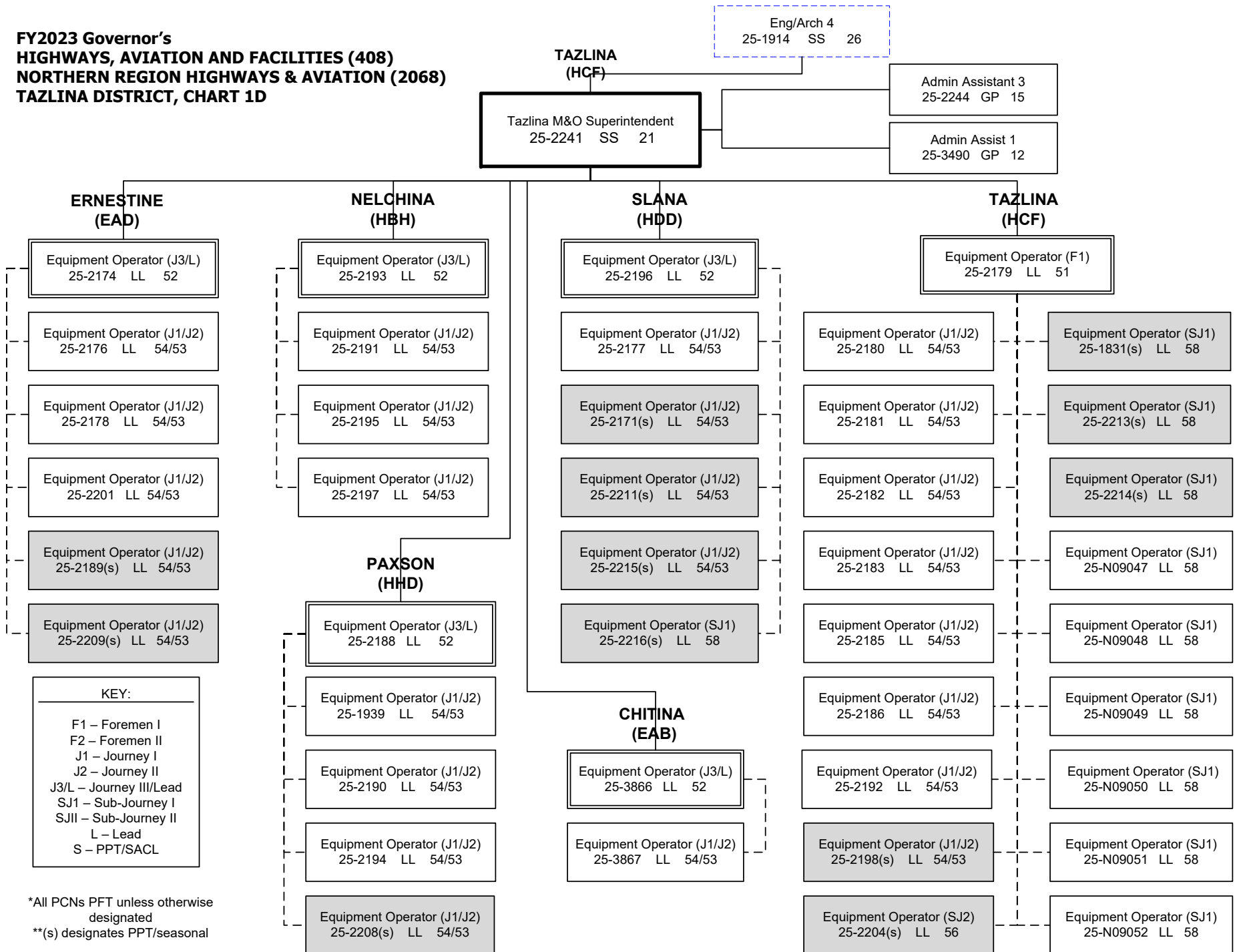


**FY2023 Governor's
HIGHWAYS, AVIATION AND FACILITIES (408)
NORTHERN REGION HIGHWAYS & AVIATION (2068)
TOK DISTRICT, CHART 1C**



*All PCNs PFT unless otherwise designated
**(s) designates PPT/seasonal

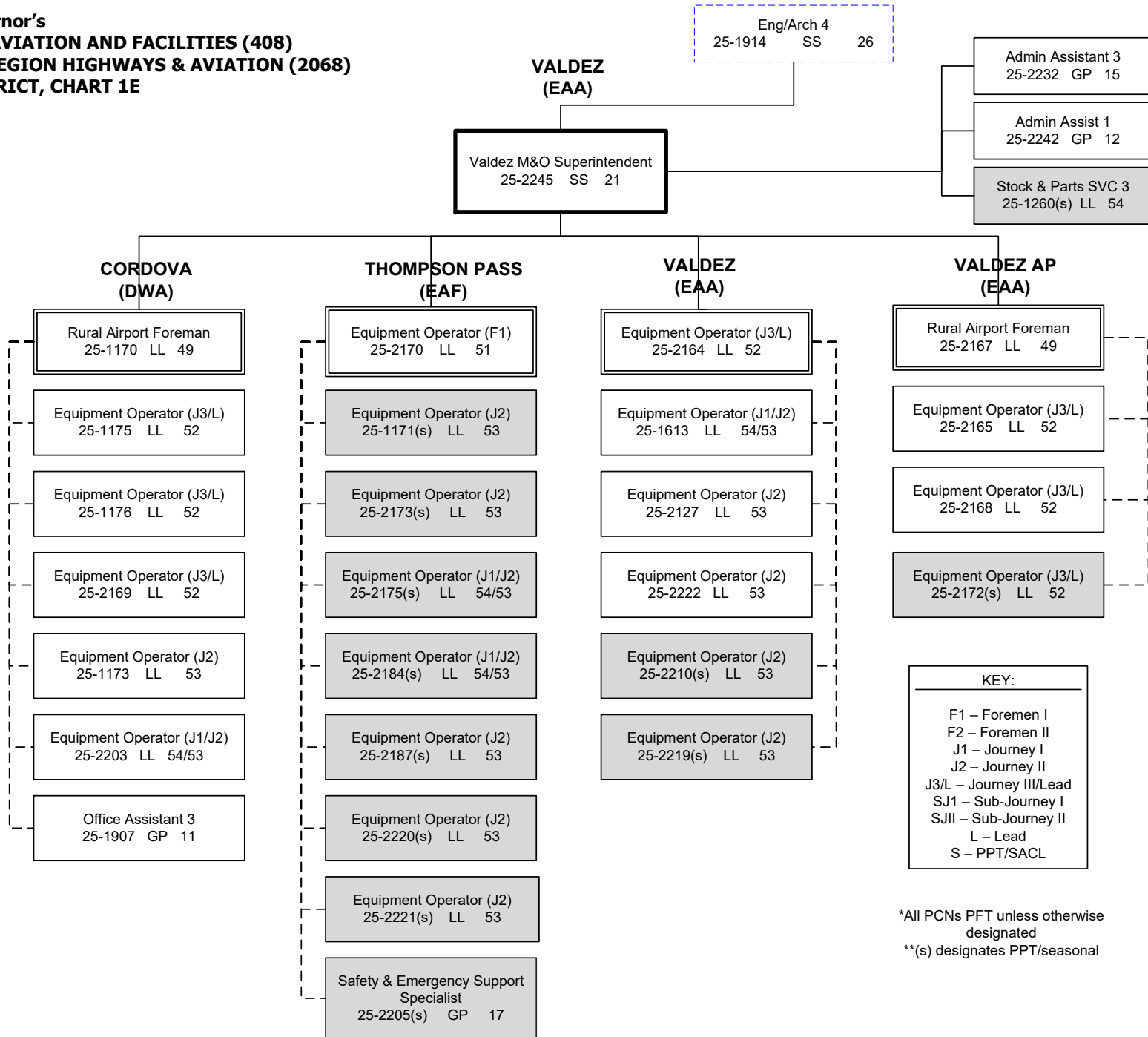
**FY2023 Governor's
HIGHWAYS, AVIATION AND FACILITIES (408)
NORTHERN REGION HIGHWAYS & AVIATION (2068)
TAZLINA DISTRICT, CHART 1D**



*All PCNs PFT unless otherwise designated

**s) designates PPT/seasonal

**FY2023 Governor's
HIGHWAYS, AVIATION AND FACILITIES (408)
NORTHERN REGION HIGHWAYS & AVIATION (2068)
VALDEZ DISTRICT, CHART 1E**



*All PCNs PFT unless otherwise designated
**(s) designates PPT/seasonal

**FY2023 Governor's
HIGHWAYS, AVIATION AND FACILITIES (408)
NORTHERN REGION HIGHWAYS & AVIATION (2068)
DALTON DISTRICT, CHART 2**

Eng/Arch 4
25-1914 SS 26

FAIRBANKS
(JBA)

Dalton M&O Superintendent
25-1903 SS 21

Admin Assistant 3
25-2073 GP 15
Admin Assist 1
25-2117 GP 12
Admin Assist 1
25-1638 GP 12

Equip Operator (F1)
25-2041 LL 51

Equip Operator (F1)
25-3661 LL 51

**FBKS/DALTON
ROVING (JCN)**

- Equip Operator (J1/J2)
25-2026 LL 54/53
- Equip Operator (J1/J2)
25-2038 LL 54/53
- Equip Operator (J1/J2)
25-2045 LL 54/53
- Equip Operator (J1/J2)
25-3662 LL 54/53
- Equip Operator (J1/J2)
25-3672 LL 54/53
- Equip Operator (SJ2)
25-N11047 LL 56
- Equip Operator (SJ2)
25-N11048 LL 56
- Equip Operator (SJ2)
25-N11049 LL 56
- Equip Operator (SJ2)
25-N11050 LL 56
- Equip Operator (SJ2)
25-N11064 LL 56
- Equip Operator (SJ2)
25-N11065 LL 56
- Equip Operator (SJ2)
25-N11066 LL 56
- Equip Operator (SJ2)
25-N11067 LL 56

**LIVENGOOD
(JQA)**

- Equip Operator(J3/L)
25-1980 LL 52
- Equip Operator (J1/J2)
25-1981 LL 54/53
- Equip Operator (J1/J2)
25-1985 LL 54/53
- Equip Operator (J1/J2)
25-2008 LL 54/53
- Equip Operator (J1/J2)
25-2060 LL 54/53
- Equip Operator (J1/J2)
25-3669 LL 54/53
- Equip Operator (SJ2/J1)
25-2059 LL 56/54

**JIM RIVER
(KEE)**

- Equip Operator (J3/L)
25-2032 LL 52
- Equip Operator (J1/J2)
25-2053 LL 54/53
- Equip Operator (J1/J2)
25-2058 LL 54/53
- Equip Operator (J1/J2)
25-2066 LL 54/53
- Equip Operator (SJ2/J1)
25-2055 LL 56/54

MANLEY (JRC)

- Equip Operator (J3/L)
25-1982 LL 52
- Equip Operator (J1/J2)
25-1960 LL 54/53
- Equip Operator (J1/J2)
25-1969 LL 54/53
- Equip Operator (J1/J2)
25-1971 LL 54/53
- Equip Operator (SJ2/J1)
25-2050 LL 56/54

**COLDFOOT
(KRB)**

- Equip Operator (J3/L)
25-2034 LL 52
- Equip Operator (J1/J2)
25-2042 LL 54/53
- Equip Operator (J1/J2)
25-3668 LL 54/53
- Equip Operator (J1/J2)
25-2086(s) LL 54/53

**SEVEN MILE
(JQG)**

- Equip Operator (J3/L)
25-2030 LL 52
- Equip Operator (J1/J2)
25-2031 LL 54/53
- Equip Operator (J1/J2)
25-2065 LL 54/53
- Equip Operator (J1/J2)
25-2091 LL 54/53
- Equip Operator (SJ2/J1)
25-2080 LL 56/54

**CHANDALAR
(LEA)**

- Equip Operator (J3/L)
25-2028 LL 52
- Equip Operator (J1/J2)
25-2051 LL 54/53
- Equip Operator (J1/J2)
25-2062 LL 54/53
- Equip Operator (J1/J2)
25-2070 LL 54/53
- Equip Operator (J1/J2)
25-2090 LL 54/53
- Equip Operator (J1/J2)
25-3664 LL 54/53
- Equip Operator (J1/J2)
25-2036(s) LL 54/53
- Equip Operator (SJ2/J1)
25-2019 LL 56/54

**SAG RIVER
(LED)**

- Equip Operator (J3/L)
25-2029 LL 52
- Equip Operator (J1/J2)
25-2035 LL 54/53
- Equip Operator (J1/J2)
25-2040 LL 54/53
- Equip Operator (J1/J2)
25-2057 LL 54/53
- Equip Operator (SJ2/J1)
25-2069 LL 56/54
- Equip Operator (SJ2/J1)
25-2206 LL 56/54

KEY:
F1 – Foremen I
F2 – Foremen II
J1 – Journey I
J2 – Journey II
J3/L – Journey III/Lead
SJ1 – Sub-Journey I
SJII – Sub-Journey II
L – Lead
S – PPT/SACL

*All PCNs PFT unless otherwise designated
**(s) designates PPT/seasonal

**FY2023 Governor's
HIGHWAYS, AVIATION AND FACILITIES (408)
NORTHERN REGION HIGHWAYS & AVIATION (2068)
DALTON DISTRICT, CHART 2B**

FAIRBANKS
(JBA)

Dalton M&O Superintendent
25-1903 SS 21

**UTQIAGVIK
(MEA)**

**DEADHORSE
(MBC)**

Rural Airport Foreman
25-3665 LL 49

Rural Airport Foreman
25-2023 LL 49

(Work alternate
workweeks)

Equip Op Foreman II
25-3660 LL 50

Equip Op (J3/L)
25-3356 LL 52

Maint Spec Electrician (J2)
25-2006 LL 51

Equipment Operator (J3/L)
25-2044 LL 52

(Work alternate
workweeks)

Equip Op Foreman II
25-2061 LL 50

Equip Op Foreman II
25-3671 LL 50

Maint Spec Electrician (J2)
25-2056 LL 51

Equipment Operator(J3/L)
25-2046 LL 52

Equipment Operator (J3/L)
25-1965 LL 52

Equipment Operator (J3/L)
25-2047 LL 52

Equipment Operator (J3/L)
25-2043 LL 52

Equipment Operator (J3/L)
25-2064 LL 52

Equipment Operator (J3/L)
25-2048 LL 52

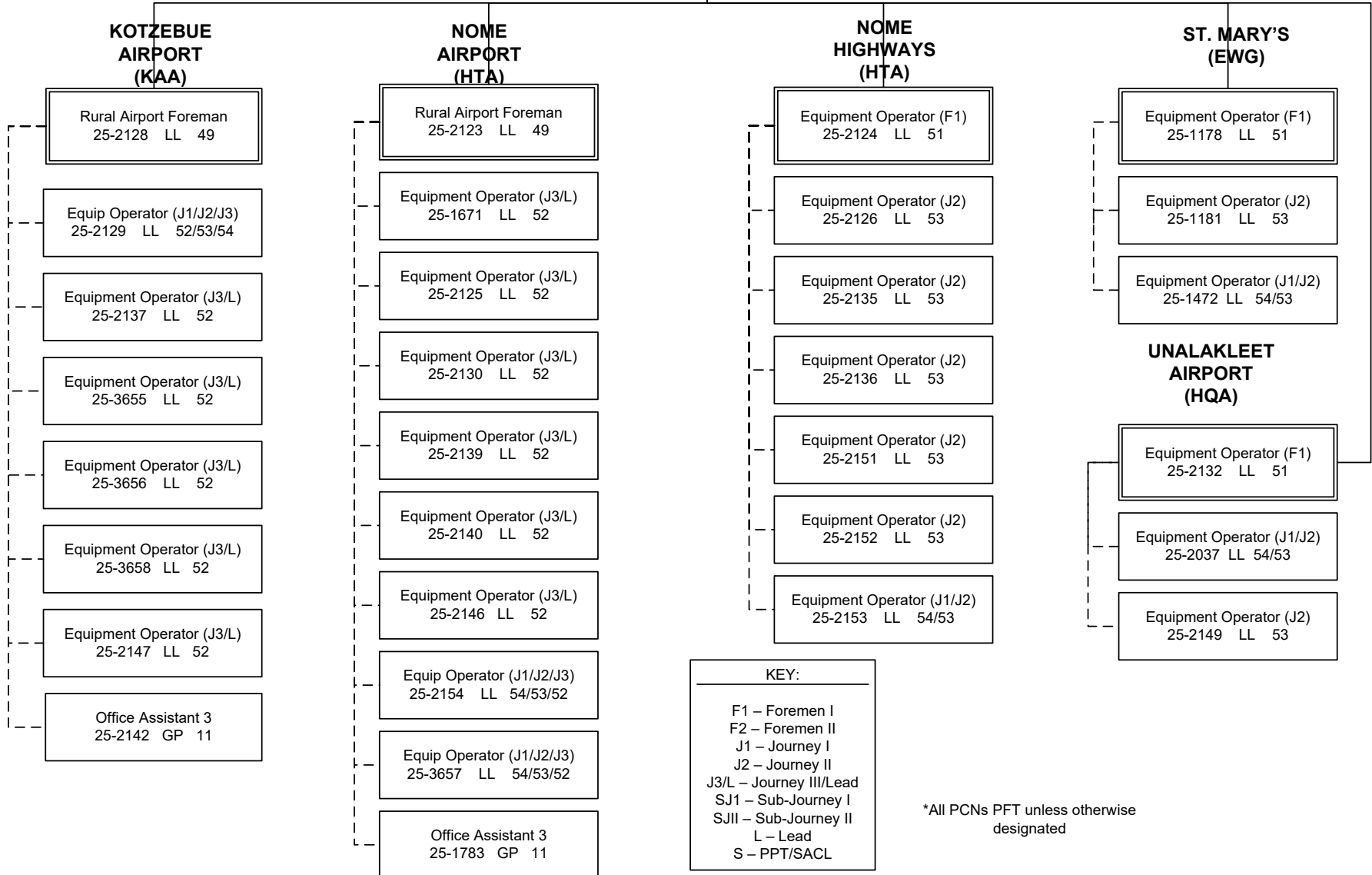
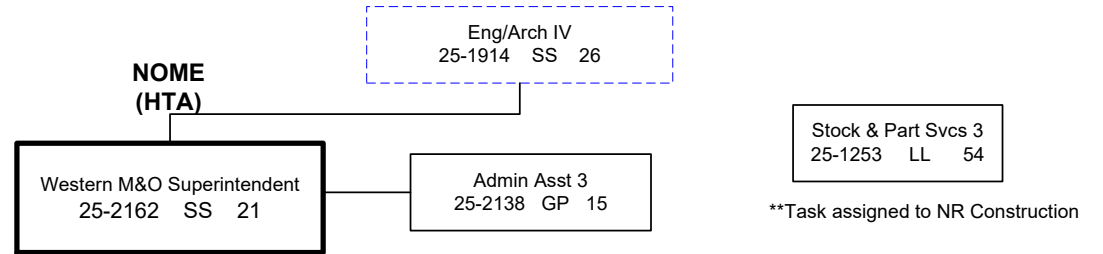
Equipment Operator (J1/J2/J3)
25-3670 LL 54/53/52

Equipment Operator (J3/L)
25-2068 LL 52

KEY:
F1 – Foremen I
F2 – Foremen II
J1 – Journey I
J2 – Journey II
J3/L – Journey III/Lead
SJ1 – Sub-Journey I
SJII – Sub-Journey II
L – Lead
S – PPT/SACL

*All PCNs PFT unless otherwise
designated

**FY2023 Governor's
HIGHWAYS, AVIATION AND FACILITIES (408)
NORTHERN REGION HIGHWAYS & AVIATION (2068)
WESTERN DISTRICT, CHART 3**



*All PCNs PFT unless otherwise designated