

**State of Alaska  
FY2023 Governor's Operating Budget**

**University of Alaska  
Matanuska-Susitna College  
Component Budget Summary**

**Component: Matanuska-Susitna College**

**Contribution to Department's Mission**

Matanuska-Susitna College (MSC) is part of the community campus system of the University of Alaska Anchorage, and primarily serves the Matanuska-Susitna Borough. The mission of the college reflects a desire to build on the strengths of the history of the state, its diverse languages and cultures, and individual experiences of the students. MSC's curriculum offers well-developed general education components, allows students to pursue individual interests, and offers a meaningful variety of certificate and associate programs and contributes coursework to baccalaureate degree programs. The college is dedicated to providing excellent, life-long learning opportunities for all adults, including workforce development and community education offerings. The MSC campus is also the home for a robust on location at Mat-Su Middle College, as well as a venue for the Alaska Native Science and Engineering Program (ANSEP) program.

**Core Services**

- **Academics:** Matanuska-Susitna College (MSC) offers Occupational Endorsement certificates in: Cisco-Certified Network Associate; Refrigeration and Heating; and Veterinary Assisting. MSC offers the Associate of Arts General Program, as well as Associate of Applied Science degrees in: Accounting; Computer Systems and Network Technology; General Business; Human Services; and Paramedical Technology. MSC is also the base of teaching for one cohort of the UAA School of Nursing program.
- **Student Success and Access:** MSC provides academic advising, financial aid assistance, career counseling and tutoring services.
- **Dual Enrollment:** In addition to the Mat-Su Middle College and ANSEP programs, MSC has Career and Technical Education opportunities for post-secondary credit through partnerships with the Matanuska-Susitna Borough School District.
- **Continuing Education and Professional Development:** The college hosts annual Health Fairs and Job Fairs. There is an annual Northrim Lecture sponsored by Northrim Bank, usually relating to economics.
- **Community Partnerships:** Mat-Su College, in non-COVID times, serves as a venue for community organization meetings. The library is open to the public and works in collaboration with all borough and state library systems. The Glenn Massay Theater is heavily used by community groups for a variety of events.
- **Community Partnerships:** The Alaska Job Corps in Palmer sends a steady contingent of students each semester to take college courses. The Job Corps is a residential facility with a significant Alaska Native composition which enables Alaskans from remote parts of the state to live near the college and take college courses while pursuing Job Corps vocational training.
- **Community Partnerships:** The Mat-Su Health Foundation has been a serious booster of the college providing over a million dollars a year for students to pursue medical careers, many of them starting at the MSC campus. In addition, the Health Foundation funded the original "Journey" program meant to provide healthier lifestyle opportunities for students and counseling, a program that continues.

**Major Component Accomplishments in 2021**

See University of Alaska Anchorage RDU

**Key Component Challenges**

See University of Alaska Anchorage RDU

**Significant Changes in Results to be Delivered in FY2023**

See University of Alaska Anchorage RDU

**Statutory and Regulatory Authority**

No statutes and regulations.

Contact Information
<p><b>Contact:</b> Michelle Rizk, Vice President, University Relations <b>Phone:</b> (907) 450-8187 <b>E-mail:</b> marizk@alaska.edu</p>

**Matanuska-Susitna College  
Personal Services Information**

Authorized Positions			Personal Services Costs	
	<u>FY2022</u> <u>Management</u> <u>Plan</u>	<u>FY2023</u> <u>Governor</u>		
Full-time	62	62	Annual Salaries	0
Part-time	1	1	Premium Pay	0
Nonpermanent	0	0	Annual Benefits	0
			<i>Less % Vacancy Factor</i>	( )
			Lump Sum Premium Pay	0
<b>Totals</b>	<b>63</b>	<b>63</b>	<b>Total Personal Services</b>	

**Position Classification Summary**

Job Class Title	Anchorage	Fairbanks	Juneau	Others	Total
No personal services.					
<b>Totals</b>	<b>0</b>	<b>0</b>	<b>0</b>	<b>0</b>	<b>0</b>

**Component Detail All Funds**  
**University of Alaska**

**Component:** Matanuska-Susitna College (758)  
**RDU:** University of Alaska Anchorage (235)

Non-Formula Component

	FY2021 Actuals	FY2022 Conference Committee	FY2022 Authorized	FY2022 Management Plan	FY2023 Governor	FY2022 Management Plan vs FY2023 Governor	
71000 Personal Services	0.0	0.0	0.0	0.0	7,389.2	7,389.2	100.0%
72000 Travel	0.0	0.0	0.0	0.0	35.1	35.1	100.0%
73000 Services	0.0	0.0	0.0	0.0	5,017.0	5,017.0	100.0%
74000 Commodities	0.0	0.0	0.0	0.0	649.7	649.7	100.0%
75000 Capital Outlay	0.0	0.0	0.0	0.0	85.0	85.0	100.0%
77000 Grants, Benefits	0.0	0.0	0.0	0.0	150.0	150.0	100.0%
78000 Miscellaneous	0.0	0.0	0.0	0.0	21.6	21.6	100.0%
<b>Totals</b>	<b>0.0</b>	<b>0.0</b>	<b>0.0</b>	<b>0.0</b>	<b>13,347.6</b>	<b>13,347.6</b>	<b>100.0%</b>
<b>Fund Sources:</b>							
1002 Fed Rcpts (Fed)	0.0	0.0	0.0	0.0	245.0	245.0	100.0%
1004 Gen Fund (UGF)	0.0	0.0	0.0	0.0	4,568.7	4,568.7	100.0%
1007 I/A Rcpts (Other)	0.0	0.0	0.0	0.0	122.3	122.3	100.0%
1048 Univ Rcpt (DGF)	0.0	0.0	0.0	0.0	8,172.1	8,172.1	100.0%
1151 VoTech Ed (DGF)	0.0	0.0	0.0	0.0	189.5	189.5	100.0%
1174 UA I/A (Other)	0.0	0.0	0.0	0.0	50.0	50.0	100.0%
<b>Unrestricted General (UGF)</b>	<b>0.0</b>	<b>0.0</b>	<b>0.0</b>	<b>0.0</b>	<b>4,568.7</b>	<b>4,568.7</b>	<b>100.0%</b>
<b>Designated General (DGF)</b>	<b>0.0</b>	<b>0.0</b>	<b>0.0</b>	<b>0.0</b>	<b>8,361.6</b>	<b>8,361.6</b>	<b>100.0%</b>
<b>Other Funds</b>	<b>0.0</b>	<b>0.0</b>	<b>0.0</b>	<b>0.0</b>	<b>172.3</b>	<b>172.3</b>	<b>100.0%</b>
<b>Federal Funds</b>	<b>0.0</b>	<b>0.0</b>	<b>0.0</b>	<b>0.0</b>	<b>245.0</b>	<b>245.0</b>	<b>100.0%</b>
<b>Positions:</b>							
Permanent Full Time	0	0	0	0	62	62	100.0%
Permanent Part Time	0	0	0	0	1	1	100.0%
Non Permanent	0	0	0	0	0	0	0.0%

**Component Detail All Funds**  
University of Alaska

**Component:** Matanuska-Susitna College (758)  
**RDU:** University of Alaska Anchorage CC (699)

Non-Formula Component

	FY2021 Actuals	FY2022 Conference Committee	FY2022 Authorized	FY2022 Management Plan	FY2023 Governor	FY2022 Management Plan vs FY2023 Governor		
71000 Personal Services	5,856.4	8,448.5	8,448.5	7,389.2	0.0	-7,389.2	-100.0%	
72000 Travel	0.0	50.1	50.1	35.1	0.0	-35.1	-100.0%	
73000 Services	2,008.2	3,681.7	3,681.7	5,017.0	0.0	-5,017.0	-100.0%	
74000 Commodities	496.6	693.7	693.7	649.7	0.0	-649.7	-100.0%	
75000 Capital Outlay	87.6	97.0	97.0	85.0	0.0	-85.0	-100.0%	
77000 Grants, Benefits	149.1	200.0	200.0	150.0	0.0	-150.0	-100.0%	
78000 Miscellaneous	0.0	21.5	21.5	21.6	0.0	-21.6	-100.0%	
<b>Totals</b>	<b>8,597.9</b>	<b>13,192.5</b>	<b>13,192.5</b>	<b>13,347.6</b>	<b>0.0</b>	<b>-13,347.6</b>	<b>-100.0%</b>	
<b>Fund Sources:</b>								
1002 Fed Rcpts (Fed)	0.0	245.0	245.0	245.0	0.0	-245.0	-100.0%	
1004 Gen Fund (UGF)	4,568.7	4,568.7	4,568.7	4,568.7	0.0	-4,568.7	-100.0%	
1007 I/A Rcpts (Other)	1.0	122.3	122.3	122.3	0.0	-122.3	-100.0%	
1048 Univ Rcpt (DGF)	4,004.3	8,172.1	8,172.1	8,172.1	0.0	-8,172.1	-100.0%	
1151 VoTech Ed (DGF)	17.9	34.4	34.4	189.5	0.0	-189.5	-100.0%	
1174 UA I/A (Other)	6.0	50.0	50.0	50.0	0.0	-50.0	-100.0%	
<b>Unrestricted General (UGF)</b>	<b>4,568.7</b>	<b>4,568.7</b>	<b>4,568.7</b>	<b>4,568.7</b>	<b>0.0</b>	<b>-4,568.7</b>	<b>-100.0%</b>	
<b>Designated General (DGF)</b>	<b>4,022.2</b>	<b>8,206.5</b>	<b>8,206.5</b>	<b>8,361.6</b>	<b>0.0</b>	<b>-8,361.6</b>	<b>-100.0%</b>	
<b>Other Funds</b>	<b>7.0</b>	<b>172.3</b>	<b>172.3</b>	<b>172.3</b>	<b>0.0</b>	<b>-172.3</b>	<b>-100.0%</b>	
<b>Federal Funds</b>	<b>0.0</b>	<b>245.0</b>	<b>245.0</b>	<b>245.0</b>	<b>0.0</b>	<b>-245.0</b>	<b>-100.0%</b>	
<b>Positions:</b>								
Permanent Full Time	64	64	64	62	0	-62	-100.0%	
Permanent Part Time	2	2	2	1	0	-1	-100.0%	
Non Permanent	0	0	0	0	0	0	0.0%	

**Change Record Detail - Multiple Scenarios with Descriptions**  
**University of Alaska**

**Component:** Matanuska-Susitna College (758)  
**RDU:** University of Alaska Anchorage (235)

Scenario/Change Record Title	Trans Type	Totals	Personal Services	Travel	Services	Commodities	Capital Outlay	Grants, Benefits	Miscellaneous	Positions		NP
										PFT	PPT	
***** Changes From FY2022 Conference Committee To FY2022 Authorized *****												
<b>FY2022 Conference Committee</b>												
ConfCom		13,192.5	8,448.5	50.1	3,681.7	693.7	97.0	200.0	21.5	64	2	0
1002 Fed Rcpts		245.0										
1004 Gen Fund		4,568.7										
1007 I/A Rcpts		122.3										
1048 Univ Rcpt		8,172.1										
1151 VoTech Ed		34.4										
1174 UA I/A		50.0										
<b>Subtotal</b>		<b>13,192.5</b>	<b>8,448.5</b>	<b>50.1</b>	<b>3,681.7</b>	<b>693.7</b>	<b>97.0</b>	<b>200.0</b>	<b>21.5</b>	<b>64</b>	<b>2</b>	<b>0</b>

***** Changes From FY2022 Authorized To FY2022 Management Plan *****												
<b>Transfer Technical Vocational Education Program Funds to Align with Distributions</b>												
Trin		155.1	0.0	0.0	155.1	0.0	0.0	0.0	0.0	0	0	0
1151 VoTech Ed		155.1										

Transfers between allocations to reallocate Vocational Technical Funding to FY2022 Programs approved by the UA Workforce Development Committee.

- (\$93.7) - Kenai Peninsula College
- \$12.6 - Kodiak College
- \$155.1 - Matanuska-Susitna College
- (\$85.0) - Bristol Bay Campus
- (\$32.8) - Interior Alaska Campus
- \$206.6 - Kuskokwim Campus
- (\$95.9) - Northwest Campus
- \$19.1 - Juneau Campus
- (\$82.6) - Ketchikan Campus
- (\$3.4) - Sitka Campus

<b>Return Positions Related to General Fund Reduction</b>												
PosAdj		0.0	0.0	0.0	0.0	0.0	0.0	0.0	0.0	-2	-1	0

Return positions related to the FY2022 \$4.3M general fund reduction that University management and the Board of Regents have deemed necessary.

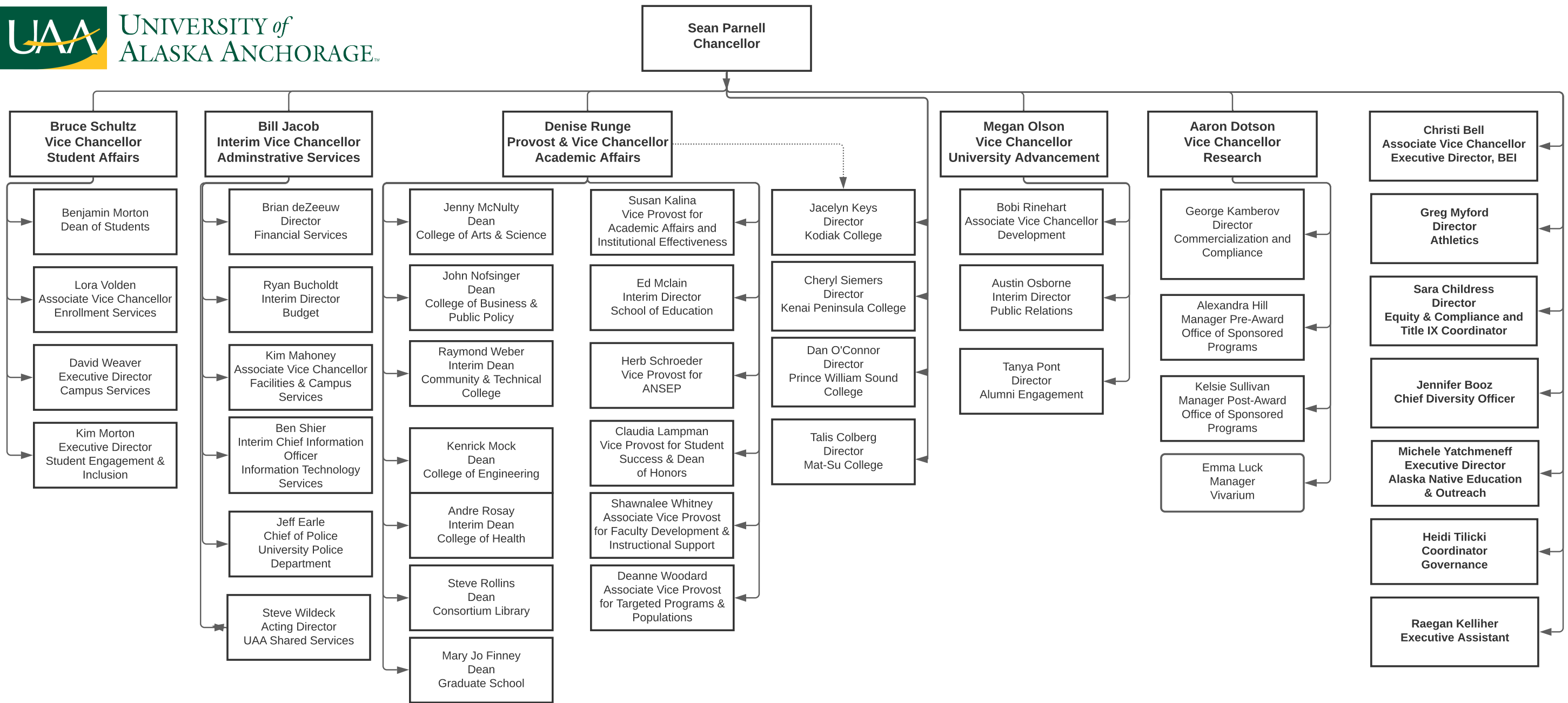
- Full-Time PCN Deletions:
- 72 Anchorage Campus
  - 4 Kenai Peninsula Campus
  - 1 Kodiak College
  - 2 Matanuska Susitna College
  - 7 Sitka Campus

**Change Record Detail - Multiple Scenarios with Descriptions**  
**University of Alaska**

**Component:** Matanuska-Susitna College (758)  
**RDU:** University of Alaska Anchorage (235)

Scenario/Change Record Title	Trans Type	Totals	Personal Services	Travel	Services	Commodities	Capital Outlay	Grants, Benefits	Miscellaneous	Positions		NP
										PFT	PPT	
Part-Time PCN Deletions:												
-1 Matanuska Susitna College												
<b>Align Authority with Anticipated Expenditures</b>												
	LIT	0.0	-1,059.3	-15.0	1,180.2	-44.0	-12.0	-50.0	0.1	0	0	0
Transfers between expenditure categories that University management and the Board of Regents have deemed necessary to accurately reflect expenditure levels for FY2022												
	<b>Subtotal</b>	<b>13,347.6</b>	<b>7,389.2</b>	<b>35.1</b>	<b>5,017.0</b>	<b>649.7</b>	<b>85.0</b>	<b>150.0</b>	<b>21.6</b>	<b>62</b>	<b>1</b>	<b>0</b>
***** <b>Changes From FY2022 Management Plan To FY2023 Governor</b> *****												
	<b>Totals</b>	<b>13,347.6</b>	<b>7,389.2</b>	<b>35.1</b>	<b>5,017.0</b>	<b>649.7</b>	<b>85.0</b>	<b>150.0</b>	<b>21.6</b>	<b>62</b>	<b>1</b>	<b>0</b>





Personal Services Expenditure Detail  
University of Alaska

**Component:** Matanuska-Susitna College (758)  
**RDU:** University of Alaska Anchorage (235)

Notes:

1. If a position is split, an asterisk (\*) will appear in the Split/Count column. If the split position is also counted in the component, two asterisks (\*\*) will appear in the column.
2. "Pool" PCN refers to UA temporary positions, such as adjunct faculty; student employees; and other non-permanent staff. Multiple incumbents may share the same labor pool position number

PCN	Job Class Title	Location	Time Status	Split/ Count	Employee Class	Benefit Rate	Annual	Annual	Total	UGF
							Budgeted Salary	Benefits	Costs	Estimate
580005	Administrative Management 2	Palmer	FT		APT - Exempt Employees	39.5%	69,113	27,300	96,413	35,931
580012	Fiscal Technician 2	Palmer	FT		PERS - Classified	51.2%	46,416	23,765	70,181	26,155
580013	Fiscal Technician 2	Palmer	FT		PERS - Classified	51.2%	48,337	24,749	73,086	27,238
580015	Student Svcs Technician 2	Palmer	FT		PERS - Classified	51.2%	46,416	23,765	70,181	26,155
580016	Communications Specialist 3	Palmer	FT		PERS - Classified	51.2%	49,778	25,486	75,264	28,050
580017	Library Technician 3	Palmer	FT		PERS - Classified	51.2%	100		100	-
580018	Campus Services Generalist 3	Palmer	FT		PERS - Classified	51.2%	21,416	10,965	32,381	-
580019	Student Svcs Professional 2	Palmer	FT		PERS - Classified	51.2%	55,520	28,426	83,946	31,285
580020	Assistant Professor	Palmer	FT		United Academics BU	28.1%	100		100	-
580021	Admin Generalist 3	Palmer	FT		PERS - Classified	51.2%	40,382	20,676	61,058	22,755
580031	Director (Admin)	Palmer	FT		Sr. Administrator	27.7%	141,316	39,145	180,461	67,254
580049	Admin Generalist 4	Palmer	FT		PERS - Classified	51.2%	45,539	23,316	68,855	25,661
580106	Student Svcs Professional 1	Palmer	FT		PERS - Classified	51.2%	45,539	23,316	68,855	25,661
580113	Student Svcs Manager 1	Palmer	FT		APT - Exempt Employees	39.5%	69,781	27,563	97,344	36,278
580119	Student Svcs Technician 2	Palmer	FT		PERS - Classified	51.2%	100		100	-
580126	Fac Svcs-MO&U Supervisor 4	Palmer	FT		APT - Exempt Employees	39.5%	100		100	-
580128	Professor	Palmer	FT		United Academics BU	28.1%	80,717	22,681	103,398	38,535
580129	Library Technician 3	Palmer	FT		PERS - Classified	51.2%	56,668	29,014	85,682	31,932
580130	Admin Generalist 3	Palmer	FT		PERS - Classified	51.2%	52,806	27,037	79,843	29,756
580131	Fiscal Technician 4	Palmer	FT		PERS - Classified	51.2%	49,778	25,486	75,264	28,050
580132	Associate Professor	Palmer	FT		United Academics BU	28.1%	68,466	19,239	87,705	32,686
580133	Student Svcs Manager 2	Palmer	FT		APT - Exempt Employees	39.5%	64,457	25,461	89,918	33,511
580134	Assistant Professor	Palmer	FT		United Academics BU	28.1%	65,000	18,265	83,265	31,031
580135	Assistant Professor	Palmer	FT		United Academics BU	28.1%	70,700	19,867	90,567	33,753
580136	Associate Professor	Palmer	FT		United Academics BU	28.1%	63,406	17,817	81,223	30,270
580137	Associate Professor	Palmer	FT		United Academics BU	28.1%	70,996	19,950	90,946	33,894
580138	Instructor	Palmer	FT		United Academics BU	28.1%	75,750	21,286	97,036	36,163
580140	Instructor	Palmer	FT		United Academics BU	28.1%	86,558	24,323	110,881	41,323
580154	Student Svcs Professional 2	Palmer	FT		PERS - Classified	51.2%	50,279	25,743	76,022	28,332
580157	IS Net Technician 7	Palmer	FT		PERS - Classified	51.2%	58,923	30,169	89,092	33,203
580158	IS Net Technician 6	Palmer	FT		PERS - Classified	51.2%	52,806	27,037	79,843	29,756
580176	Admin Specialist 2	Palmer	FT		PERS - Classified	51.2%	52,346	26,801	79,147	29,497
580189	Director (Academic-Faculty)	Palmer	FT		Non-Represented Faculty	27.7%	106,213	29,421	135,634	50,548
580196	Library Technician 3	Palmer	FT		PERS - Classified	51.2%	40,382	20,676	61,058	22,755
580241	Fac Svcs-MO&U Supervisor 4	Palmer	FT		APT - Exempt Employees	39.5%	78,634	31,060	109,694	40,881
580243	Crafts & Trades I (CT1)	Palmer	FT		AHECTE- Labor Trades & Crafts	51.7%	53,867	27,849	81,716	30,454

Personal Services Expenditure Detail  
University of Alaska

**Component:** Matanuska-Susitna College (758)  
**RDU:** University of Alaska Anchorage (235)

Notes:

1. If a position is split, an asterisk (\*) will appear in the Split/Count column. If the split position is also counted in the component, two asterisks (\*\*) will appear in the column.
2. "Pool" PCN refers to UA temporary positions, such as adjunct faculty; student employees; and other non-permanent staff. Multiple incumbents may share the same labor pool position number

PCN	Job Class Title	Location	Time Status	Split/ Count	Employee Class	Benefit Rate	Annual	Annual	Total	UGF
							Budgeted Salary	Benefits	Costs	Estimate
580245	Maint Service Worker II (MSW2)	Palmer	FT		AHECTE- Labor Trades & Crafts	51.7%	39,304	20,320	59,624	22,221
580246	Maint Service Worker IV (MSW4)	Palmer	FT		AHECTE- Labor Trades & Crafts	51.7%	45,998	23,781	69,779	26,005
580284	Associate Professor	Palmer	FT		United Academics BU	28.1%	60,610	17,031	77,641	28,936
580290	Associate Professor	Palmer	FT		United Academics BU	28.1%	64,497	18,124	82,621	30,791
580300	Student Svcs Technician 3	Palmer	FT		PERS - Classified	51.2%	49,778	25,486	75,264	28,050
580301	Communications Specialist 3	Palmer	FT		PERS - Classified	51.2%	49,778	25,486	75,264	28,050
580302	Admin Specialist 2	Palmer	FT		PERS - Classified	51.2%	52,346	26,801	79,147	29,497
580303	Administrative Management 1	Palmer	FT		APT - Exempt Employees	39.5%	72,642	28,694	101,336	37,766
580334	Assistant Professor	Palmer	FT		United Academics BU	28.1%	70,000	19,670	89,670	33,418
580336	Professor	Palmer	FT		United Academics BU	28.1%	88,188	24,781	112,969	42,101
580337	Assistant Professor	Palmer	FT		United Academics BU	28.1%	65,650	18,448	84,098	31,342
580340	Term Asst Professor	Palmer	FT		United Academics BU	28.1%	72,506	20,374	92,880	34,615
580345	Assistant Professor	Palmer	FT		United Academics BU	28.1%	65,306	18,351	83,657	31,177
580350	Assistant Professor	Palmer	FT		United Academics BU	28.1%	71,168	19,998	91,166	33,976
580351	Assistant Professor	Palmer	PT		United Academics BU	28.1%	100		100	-
580352	Associate Professor	Palmer	FT		United Academics BU	28.1%	71,815	20,180	91,995	34,285
580358	IS Manager 1	Palmer	FT		APT - Exempt Employees	39.5%	66,378	26,219	92,597	34,509
580460	Student Svcs Technician 3	Palmer	FT		PERS - Classified	51.2%	46,876	24,001	70,877	26,414
580461	Student Svcs Professional 2	Palmer	FT		PERS - Classified	51.2%	49,778	25,486	75,264	28,050
580462	Term Asst Professor	Palmer	FT		United Academics BU	28.1%	80,800	22,705	103,505	38,574
580463	Student Svcs Professional 2	Palmer	FT		PERS - Classified	51.2%	49,778	25,486	75,264	28,050
580464	Admin Generalist 4	Palmer	FT		PERS - Classified	51.2%	45,539	23,316	68,855	25,661
580465	Research Technician 4	Palmer	FT		PERS - Classified	51.2%	56,668	29,014	85,682	31,932
580467	Student Svcs Professional 2	Palmer	FT		PERS - Classified	51.2%	57,190	29,281	86,471	32,226
580468	Associate Professor	Palmer	FT		United Academics BU	28.1%	88,997	25,008	114,005	42,488
580470	Admin Generalist 3	Palmer	FT		PERS - Classified	51.2%	49,778	25,486	75,264	28,050
580821	Assistant Professor	Palmer	FT		United Academics BU	28.1%	100		100	-
Pool	Adjunct Faculty	Palmer	PT	*	Non-Represented Adjunct Faculty	8.9%	56,598	6,267	62,865	23,429
Pool	Adjunct Faculty	Palmer	PT	*	UNAD Adjunct Faculty	8.9%	655,208	72,572	727,781	271,230
Pool	UA Labor Pool	Palmer	PT	*	Labor Pool	0.0%	1,717,146		1,717,146	624,304

Personal Services Expenditure Detail  
University of Alaska

**Component:** Matanuska-Susitna College (758)  
**RDU:** University of Alaska Anchorage (235)

Notes:

1. If a position is split, an asterisk (\*) will appear in the Split/Count column. If the split position is also counted in the component, two asterisks (\*\*) will appear in the column.
2. "Pool" PCN refers to UA temporary positions, such as adjunct faculty; student employees; and other non-permanent staff. Multiple incumbents may share the same labor pool position number

PCN	Job Class Title	Location	Time Status	Split/Count	Employee Class	Benefit Rate	Annual Budgeted Salary	Annual Benefits	Total Costs	UGF Estimate	
							<b>Total Position Costs</b>	5,939,225	1,450,020	7,389,245	2,725,898
								Federal Receipts (1002)		16,612	
								General Fund Receipts (1004)		2,725,898	
								Interagency Receipts (1007)		8,293	
								University Receipts (1048)		4,608,610	
								UA Intra-agency Transfers (1174)		29,832	
								<b>UA Funding</b>		<b>7,389,245</b>	

Full Time Positions:	62
Part Time Positions:	<u>1</u>
<b>Positions in Component:</b>	<b>63</b>