

State of Alaska FY2023 Governor's Operating Budget

University of Alaska Prince William Sound College Component Budget Summary

Component: Prince William Sound College

Contribution to Department's Mission

Prince William Sound College (PWSC) is part of the community campus system of the University of Alaska Anchorage. The mission of PWSC is to use its unique resources and magnificent landscape to enrich the lives of our students and our communities. Located in Valdez, Alaska, with centers in Cordova and the Copper River Basin, PWSC provides access to a variety of educational and training opportunities in a geographically rich, culturally diverse, and inclusive environment. PWSC courses and programs, both on-campus and online, lead to Occupational Endorsement certificates, certifications, Associate of Arts, and Associate of Applied Science degrees.

Core Services

- Academics: PWSC provides quality instruction in higher education, offering an Associate of Arts degree designed for transfer within the University of Alaska system, an Associate of Applied Science degree in Outdoor Leadership, an Occupational Endorsement with specialized training in Millwright, and fishing vessel training for oil spill response.
- Academics: In partnership with the UAA College of Health, PWSC offers an Associate of Applied Science in Nursing degree, which significantly supports the local workforce at Providence Valdez Medical Center.
- Student Success and Access: PWSC is dedicated to the success of our students, the University of Alaska system, and its programs. PWSC created educational pathways that support retention, internship placement, and occupational goal completion and/or transfer. PWSC has embedded opportunities into both the curriculum and campus life activities that strengthen student growth in leadership skills and civic engagement.
- Dual Enrollment: PWSC maintains working relationships with area school districts and across the state to offer dual enrollment education to high school students, providing a pathway to build a transcript of university credit for transfer or completion of an associate's degree. PWSC partners with Valdez High School, Glennallen High School, and Cordova High School, as well as rural high schools from around the state through the Alaska Tech Learners program.
- Continuing Education and Professional Development: PWSC promotes continuing education and professional development among its faculty by implementing activities following the Quality Matters model, emphasizing a team approach to support both full-time and adjunct faculty.
- Continuing Education and Professional Development: PWSC offers 500-level professional development courses to Alaska school district educators, including instruction about classroom educational technology, NCCER core curriculum for teachers & technical instructors, environmental science for teachers, and computer science courses for rural students and faculty.
- Community Partnerships: Through outreach and engagement, PWSC plays an integral role in developing and sustaining the communities of Valdez, Cordova, and Glennallen. PWSC's partnerships have made PWSC an important voice in the community, one that others look to for assistance and advice.
- Community Partnerships: Such institutions include industry leaders, Alyeska Pipeline Service Company, Providence Valdez Medical Center and Cordova Medical Center, Ahtna Inc., Copper River Native Association, Valdez Native Tribe, Native Village of Eyak, Chugachmiut Native Association, and the United States Coast Guard.
- Community Partnerships: PWSC offers valuable resources to the community to learn and engage with others, including the Health and Fitness Center, Maxine and Jesse Whitney Museum, Last Frontier Theatre Conference, and an array of educational opportunities, outreach programs, classes, and hosted events.
- Community Partnerships: PWSC provides Oil Spill Response training for fishing vessel fleets in cooperation with Alyeska Pipeline Service Company in locations throughout the Gulf of Alaska, ensuring that federally mandated training requirements are met for the oil transportation industry.

Major Component Accomplishments in 2021

See University of Alaska Anchorage RDU

Key Component Challenges

See University of Alaska Anchorage RDU

Significant Changes in Results to be Delivered in FY2023

See University of Alaska Anchorage RDU

Statutory and Regulatory Authority

No statutes and regulations.

Contact Information
<p>Contact: Michelle Rizk, Vice President, University Relations Phone: (907) 450-8187 E-mail: marizk@alaska.edu</p>

Prince William Sound College Personal Services Information					
Authorized Positions			Personal Services Costs		
	<u>FY2022</u> <u>Management</u> <u>Plan</u>	<u>FY2023</u> <u>Governor</u>			
			Annual Salaries		0
Full-time	39	39	Premium Pay		0
Part-time	0	0	Annual Benefits		0
Nonpermanent	0	0	<i>Less % Vacancy Factor</i>		()
			Lump Sum Premium Pay		0
Totals	39	39	Total Personal Services		

Position Classification Summary					
Job Class Title	Anchorage	Fairbanks	Juneau	Others	Total
No personal services.					
Totals	0	0	0	0	0

Component Detail All Funds
University of Alaska

Component: Prince William Sound College (759)
RDU: University of Alaska Anchorage (235)

Non-Formula Component

	FY2021 Actuals	FY2022 Conference Committee	FY2022 Authorized	FY2022 Management Plan	FY2023 Governor	FY2022 Management Plan vs FY2023 Governor	
71000 Personal Services	0.0	0.0	0.0	0.0	4,656.8	4,656.8	100.0%
72000 Travel	0.0	0.0	0.0	0.0	34.5	34.5	100.0%
73000 Services	0.0	0.0	0.0	0.0	1,239.9	1,239.9	100.0%
74000 Commodities	0.0	0.0	0.0	0.0	251.8	251.8	100.0%
75000 Capital Outlay	0.0	0.0	0.0	0.0	36.4	36.4	100.0%
77000 Grants, Benefits	0.0	0.0	0.0	0.0	27.5	27.5	100.0%
78000 Miscellaneous	0.0	0.0	0.0	0.0	5.5	5.5	100.0%
Totals	0.0	0.0	0.0	0.0	6,252.4	6,252.4	100.0%
Fund Sources:							
1002 Fed Rcpts (Fed)	0.0	0.0	0.0	0.0	800.0	800.0	100.0%
1004 Gen Fund (UGF)	0.0	0.0	0.0	0.0	2,666.7	2,666.7	100.0%
1007 I/A Rcpts (Other)	0.0	0.0	0.0	0.0	177.3	177.3	100.0%
1048 Univ Rcpt (DGF)	0.0	0.0	0.0	0.0	2,508.9	2,508.9	100.0%
1151 VoTech Ed (DGF)	0.0	0.0	0.0	0.0	89.5	89.5	100.0%
1174 UA I/A (Other)	0.0	0.0	0.0	0.0	10.0	10.0	100.0%
Unrestricted General (UGF)	0.0	0.0	0.0	0.0	2,666.7	2,666.7	100.0%
Designated General (DGF)	0.0	0.0	0.0	0.0	2,598.4	2,598.4	100.0%
Other Funds	0.0	0.0	0.0	0.0	187.3	187.3	100.0%
Federal Funds	0.0	0.0	0.0	0.0	800.0	800.0	100.0%
Positions:							
Permanent Full Time	0	0	0	0	39	39	100.0%
Permanent Part Time	0	0	0	0	0	0	0.0%
Non Permanent	0	0	0	0	0	0	0.0%

Component Detail All Funds
University of Alaska

Component: Prince William Sound College (759)
RDU: University of Alaska Anchorage CC (699)

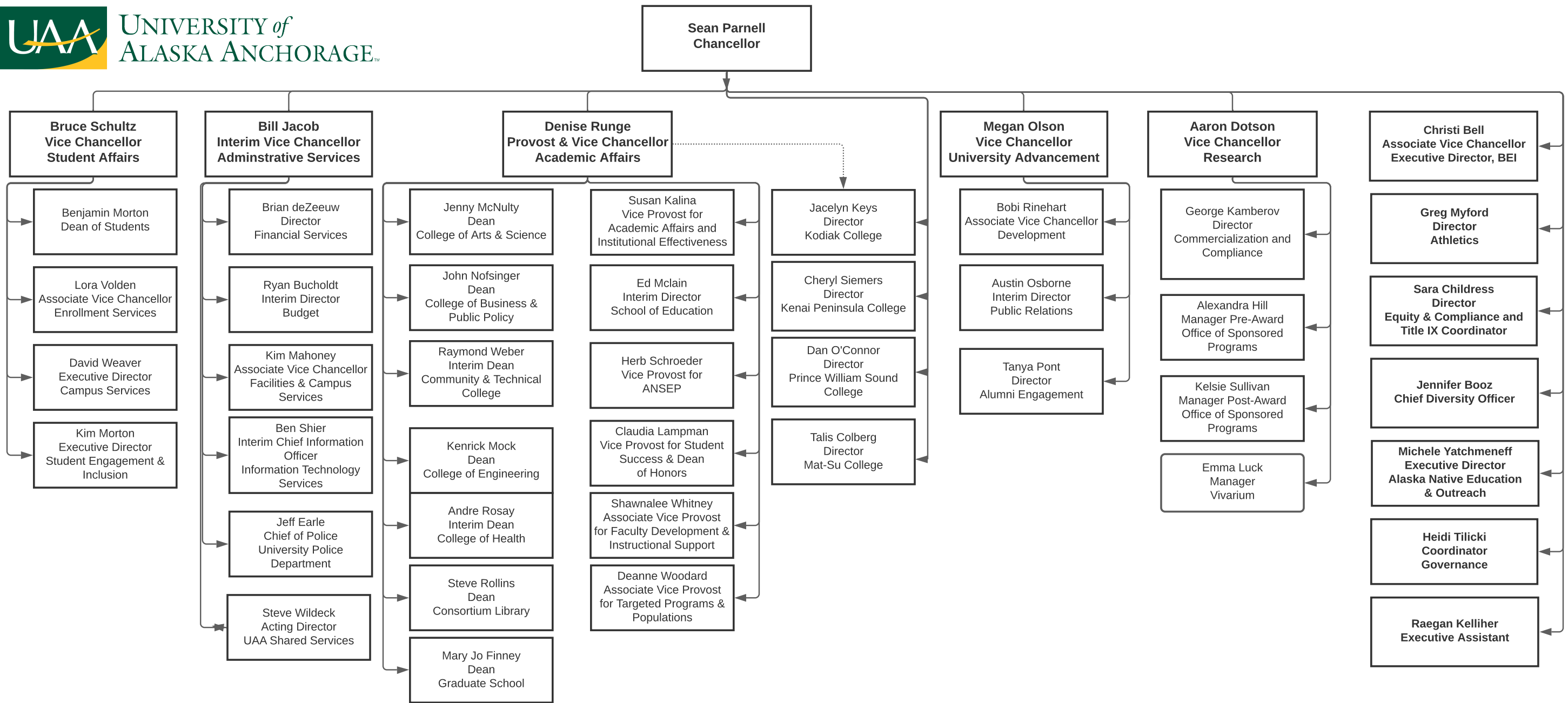
Non-Formula Component

	FY2021 Actuals	FY2022 Conference Committee	FY2022 Authorized	FY2022 Management Plan	FY2023 Governor	FY2022 Management Plan vs FY2023 Governor		
71000 Personal Services	3,740.8	4,764.2	4,764.2	4,656.8	0.0	-4,656.8	-100.0%	
72000 Travel	7.3	42.0	42.0	34.5	0.0	-34.5	-100.0%	
73000 Services	1,621.1	1,138.5	1,138.5	1,239.9	0.0	-1,239.9	-100.0%	
74000 Commodities	301.0	240.1	240.1	251.8	0.0	-251.8	-100.0%	
75000 Capital Outlay	33.7	34.7	34.7	36.4	0.0	-36.4	-100.0%	
77000 Grants, Benefits	327.1	27.5	27.5	27.5	0.0	-27.5	-100.0%	
78000 Miscellaneous	0.0	5.4	5.4	5.5	0.0	-5.5	-100.0%	
Totals	6,031.0	6,252.4	6,252.4	6,252.4	0.0	-6,252.4	-100.0%	
Fund Sources:								
1002 Fed Rcpts (Fed)	173.4	800.0	800.0	800.0	0.0	-800.0	-100.0%	
1004 Gen Fund (UGF)	2,666.7	2,666.7	2,666.7	2,666.7	0.0	-2,666.7	-100.0%	
1007 I/A Rcpts (Other)	281.1	177.3	177.3	177.3	0.0	-177.3	-100.0%	
1048 Univ Rcpt (DGF)	2,820.3	2,508.9	2,508.9	2,508.9	0.0	-2,508.9	-100.0%	
1151 VoTech Ed (DGF)	89.5	89.5	89.5	89.5	0.0	-89.5	-100.0%	
1174 UA I/A (Other)	0.0	10.0	10.0	10.0	0.0	-10.0	-100.0%	
Unrestricted General (UGF)	2,666.7	2,666.7	2,666.7	2,666.7	0.0	-2,666.7	-100.0%	
Designated General (DGF)	2,909.8	2,598.4	2,598.4	2,598.4	0.0	-2,598.4	-100.0%	
Other Funds	281.1	187.3	187.3	187.3	0.0	-187.3	-100.0%	
Federal Funds	173.4	800.0	800.0	800.0	0.0	-800.0	-100.0%	
Positions:								
Permanent Full Time	39	39	39	39	0	-39	-100.0%	
Permanent Part Time	0	0	0	0	0	0	0.0%	
Non Permanent	0	0	0	0	0	0	0.0%	

Change Record Detail - Multiple Scenarios with Descriptions
University of Alaska

Component: Prince William Sound College (759)
RDU: University of Alaska Anchorage (235)

Scenario/Change Record Title	Trans Type	Totals	Personal Services	Travel	Services	Commodities	Capital Outlay	Grants, Benefits	Miscellaneous	Positions		NP
										PFT	PPT	
***** Changes From FY2022 Conference Committee To FY2022 Authorized *****												
FY2022 Conference Committee												
ConfCom		6,252.4	4,764.2	42.0	1,138.5	240.1	34.7	27.5	5.4	39	0	0
1002 Fed Rcpts	800.0											
1004 Gen Fund	2,666.7											
1007 I/A Rcpts	177.3											
1048 Univ Rcpt	2,508.9											
1151 VoTech Ed	89.5											
1174 UA I/A	10.0											
Subtotal		6,252.4	4,764.2	42.0	1,138.5	240.1	34.7	27.5	5.4	39	0	0
***** Changes From FY2022 Authorized To FY2022 Management Plan *****												
Align Authority with Anticipated Expenditures												
LIT		0.0	-107.4	-7.5	101.4	11.7	1.7	0.0	0.1	0	0	0
Transfers between expenditure categories that University management and the Board of Regents have deemed necessary to accurately reflect expenditure levels for FY2022.												
Subtotal		6,252.4	4,656.8	34.5	1,239.9	251.8	36.4	27.5	5.5	39	0	0
***** Changes From FY2022 Management Plan To FY2023 Governor *****												
Totals		6,252.4	4,656.8	34.5	1,239.9	251.8	36.4	27.5	5.5	39	0	0



Personal Services Expenditure Detail
University of Alaska

Component: Prince William Sound College (759)

RDU: University of Alaska Anchorage (235)

Notes:

1. If a position is split, an asterisk (*) will appear in the Split/Count column. If the split position is also counted in the component, two asterisks (**) will appear in the column.
2. "Pool" PCN refers to UA temporary positions, such as adjunct faculty; student employees; and other non-permanent staff. Multiple incumbents may share the same labor pool position number

PCN	Job Class Title	Location	Time Status	Split/ Count	Employee Class	Benefit Rate	Annual	Annual	Total	UGF
							Budgeted Salary	Benefits	Costs	Estimate
620001	Term Asst Professor	Valdez	FT		United Academics BU	28.1%	64,640	18,164	82,804	44,271
620004	Term Asst Professor	Valdez	FT		United Academics BU	28.1%	63,000	17,703	80,703	43,148
620005	Stu Svcs Profess 2 (Exempt)	Valdez	FT		APT - Exempt Employees	39.5%	43,566	17,209	60,775	-
620006	Admin Specialist 3	Valdez	FT		APT - Exempt Employees	39.5%	62,285	24,603	86,888	46,454
620007	Administrative Management 2	Valdez	FT		APT - Exempt Employees	39.5%	83,917	33,147	117,064	62,588
620008	Student Svcs Manager 1	Valdez	FT		APT - Exempt Employees	39.5%	44,647	17,636	62,283	33,299
620010	Fiscal Technician 2	Valdez	FT		PERS - Classified	51.2%	44,850	22,963	67,813	36,256
620016	Term Asst Professor	Valdez	FT		United Academics BU	28.1%	64,631	18,161	82,792	44,265
620017	Fiscal Technician 3	Valdez	FT		PERS - Classified	51.2%	50,509	25,861	76,370	40,831
620018	Assistant Professor	Valdez	FT		United Academics BU	28.1%	74,927	21,054	95,981	51,316
620019	Assistant Professor	Valdez	FT		United Academics BU	28.1%	64,640	18,164	82,804	44,271
620021	Associate Professor	Valdez	FT		United Academics BU	28.1%	84,916	23,861	108,777	58,158
620023	Student Svcs Professional 2	Valdez	FT		PERS - Classified	51.2%	50,803	26,011	76,814	41,068
620027	Administrative Management 3	Valdez	FT		APT - Exempt Employees	39.5%	89,971	35,539	125,510	67,103
620028	Student Svcs Manager 1	Valdez	FT		APT - Exempt Employees	39.5%	38,481	15,200	53,681	28,700
620031	Assistant Professor	Valdez	FT		United Academics BU	28.1%	60,600	17,029	77,629	41,504
620035	Director (Admin)	Valdez	FT		Sr. Administrator	27.7%	136,888	37,918	174,806	90,655
620036	Admin Generalist 3	Valdez	FT		PERS - Classified	51.2%	36,952	18,919	55,871	29,872
620037	Admin Generalist 2	Valdez	FT		PERS - Classified	51.2%	36,950	18,918	55,868	29,870
620038	Maint Service Worker IV (MSW4)	Valdez	FT		AHECTE- Labor Trades & Crafts	51.7%	50,056	25,879	75,935	40,598
620039	Maint Service Workr III (MSW3)	Valdez	FT		AHECTE- Labor Trades & Crafts	51.7%	43,627	22,555	66,182	35,384
620040	Fac Svcs-MO&U Supervisor 4	Valdez	FT		APT - Exempt Employees	39.5%	65,438	25,848	91,286	48,806
620041	Maint Service Worker IV (MSW4)	Valdez	FT		AHECTE- Labor Trades & Crafts	51.7%	49,078	25,373	74,451	39,805
620042	Crafts & Trades I (CT1)	Valdez	FT		AHECTE- Labor Trades & Crafts	51.7%	59,492	30,757	90,249	48,252
620047	Instructional Designer 3	Valdez	FT		APT - Exempt Employees	39.5%	62,630	24,739	87,369	46,712
620048	Admin Generalist 3	Valdez	FT		PERS - Classified	51.2%	45,289	23,188	68,477	36,611
620049	Fiscal Technician 2	Valdez	FT		PERS - Classified	51.2%	44,850	22,963	67,813	36,256
620050	Admin Specialist 2	Valdez	FT		PERS - Classified	51.2%	56,940	29,153	86,093	46,030
620051	Student Svcs Professional 1	Valdez	FT		PERS - Classified	51.2%	46,445	23,780	70,225	37,546
620053	Term Asst Professor	Valdez	FT		United Academics BU	28.1%	59,920	16,838	76,758	41,038
620055	Admin Generalist 3	Valdez	FT		PERS - Classified	51.2%	53,098	27,186	80,284	42,924
620058	Term Asst Professor	Valdez	FT	**	United Academics BU	28.1%	60,122	16,894	77,016	41,177
620059	Term Asst Professor	Valdez	FT		United Academics BU	28.1%	83,285	23,403	106,688	57,040
620061	Athletics Facs, Ops & Pgms 3	Valdez	FT		APT - Exempt Employees	39.5%	55,248	21,823	77,071	41,206
620062	Communications Specialist 4	Valdez	FT		APT - Exempt Employees	39.5%	57,274	22,623	79,897	42,717
620063	Training & Development 4	Valdez	FT		APT - Exempt Employees	39.5%	69,468	27,440	96,908	51,812

Personal Services Expenditure Detail
University of Alaska

Component: Prince William Sound College (759)
RDU: University of Alaska Anchorage (235)

Notes:

1. If a position is split, an asterisk (*) will appear in the Split/Count column. If the split position is also counted in the component, two asterisks (**) will appear in the column.
2. "Pool" PCN refers to UA temporary positions, such as adjunct faculty; student employees; and other non-permanent staff. Multiple incumbents may share the same labor pool position number

PCN	Job Class Title	Location	Time Status	Split/Count	Employee Class	Benefit Rate	Annual Budgeted Salary	Annual Benefits	Total Costs	UGF Estimate
620064	Instructional Designer 3	Valdez	FT		APT - Exempt Employees	39.5%	65,438	25,848	91,286	48,806
620065	Admin Generalist 3	Valdez	FT		PERS - Classified	51.2%	46,454	23,784	70,238	37,553
620066	Admin Specialist 3	Valdez	FT		APT - Exempt Employees	39.5%	55,880	22,073	77,953	41,677
Pool	Adjunct Faculty	Valdez	PT	*	Non-Represented Adjunct Faculty	8.9%	113,065	12,484	125,549	67,125
Pool	Adjunct Faculty	Valdez	PT	*	UNAD Adjunct Faculty	8.9%	215,843	23,959	239,802	128,209
Pool	UA Labor Pool	Valdez	PT	*	Labor Pool	0.0%	1,054,039		1,054,039	434,668
Total Position Costs							3,710,152	946,651	4,656,803	2,325,579
Full Time Positions:				39						
Part Time Positions:										
Positions in Component:				39						
								Federal Receipts (1002)	196,218	
								General Fund Receipts (1004)	2,325,579	
								Interagency Receipts (1007)	43,487	
								University Receipts (1048)	2,082,799	
								UA Intra-agency Transfers (1174)	8,721	
								UA Funding	4,656,803	