

State of Alaska FY2023 Governor's Operating Budget

University of Alaska Anchorage Campus Component Budget Summary

Component: Anchorage Campus

Contribution to Department's Mission

The UAA Anchorage campus is located in Alaska's largest city and is the largest campus in the state. It served more than 19,000 students in AY2021 in a rich, diverse, and inclusive environment. Core values for the Anchorage campus include: diversity, equity, access, affordability, and excellence in teaching, research, and service to our communities.

A metropolitan campus with five academic colleges, the Anchorage campus offers many entry points and career pathway programs. Anchorage's five colleges offer programs featuring associates, baccalaureate, master's and doctoral degrees, as well as technical and professional certificates in more than 100 major study areas. Through UAA's comprehensive curriculum, students learn practical job skills and develop a strong educational foundation that prepares them for graduate or professional schools and the workplace.

The UAA/APU Consortium Library, located on the Anchorage campus, serves the students, faculty, and staff of UAA and Alaska Pacific University campuses and the state of Alaska, housing special collections. The Anchorage Middle College School, also on the Anchorage campus, serves junior and senior high school students from the Anchorage School District who are earning college credit while completing the requirements for a high school diploma.

Core Services

- **Academics:** The Anchorage campus offers approximately 150 academic programs leading to occupational endorsements, professional licensure, undergraduate and graduate certificates, associate, baccalaureate, master's, and doctoral degrees.
- **Student Success and Access:** UAA has implemented a number of efforts focused on helping students succeed: provided training for dedicated first year advisors; created clear academic pathways for baccalaureate students; implemented use of Seawolf Tracks for students and faculty to improve communication and provide alerts for action as needed; developed a peer learning assistant program to help students in courses with high enrollment and high drop/fail/withdraw rates.
- **Student Success and Access:** The Alaska Native Science and Engineering Program (ANSEP) and the Recruiting and Retention of Alaska Natives into Nursing (RRANN) program directly support Alaska Native students' academic success.
- **Dual Enrollment:** The Anchorage campus provides several ways for high school students to earn college credit, including individual admission as a non-degree seeking student; articulated Career and Technical Education courses leading to a certificate or associate's degree; UAA courses taught in the high schools by qualified high school instructors; the Anchorage School District's Anchorage Middle College School; the ANSEP Acceleration Academy; and topical Summer Academies.
- **Dual Enrollment:** The partnership with the Anchorage School District also fostered other creative approaches to dual enrollment such as the summer Advanced Aviation Academy and opportunities for high school students to take the Certified Nurse Aide course.
- **Continuing Education and Professional Development:** The Office of Professional and Continuing Education (PACE), the Business Enterprise Institute, and the College of Health provide continuing education opportunities for working professionals to expand and update their skills and knowledge.
- **Community Partnerships:** Mutually beneficial partnerships with government, non-profit organizations, and private industry in Anchorage and across Alaska are what enable UAA to offer such a vibrant learning environment.
- **Research:** UAA is home to a number of Centers and Institutes devoted to special concerns and opportunities associated with northern populations, and include: The Institute of Social and Economic Research, the UAA Justice Center, the Institute for Circumpolar Health Studies, the Alaska Center for Conservation Science, the Environment and Natural Resources Institute, and the Alaska Center for Rural Health.
- **Research:** Creative works, commercialization and research at the Anchorage campus are supported through the Office of Research, and are largely related to addressing Alaska-specific or northern issues.

Major Component Accomplishments in 2021

See University of Alaska Anchorage RDU

Key Component Challenges

See University of Alaska Anchorage RDU

Significant Changes in Results to be Delivered in FY2023

See University of Alaska Anchorage RDU

Statutory and Regulatory Authority

No statutes and regulations.

Contact Information
<p>Contact: Michelle Rizk, Vice President, University Relations Phone: (907) 450-8187 E-mail: marizk@alaska.edu</p>

Anchorage Campus Personal Services Information				
Authorized Positions			Personal Services Costs	
	<u>FY2022</u> <u>Management</u> <u>Plan</u>	<u>FY2023</u> <u>Governor</u>		
Full-time	1191	1191	Annual Salaries	0
Part-time	37	37	Premium Pay	0
Nonpermanent	0	0	Annual Benefits	0
			<i>Less % Vacancy Factor</i>	()
			Lump Sum Premium Pay	0
Totals	1228	1228	Total Personal Services	

Position Classification Summary					
Job Class Title	Anchorage	Fairbanks	Juneau	Others	Total
No personal services.					
Totals	0	0	0	0	0

Component Detail All Funds
University of Alaska

Component: Anchorage Campus (753)
RDU: University of Alaska Anchorage (235)

Non-Formula Component

	FY2021 Actuals	FY2022 Conference Committee	FY2022 Authorized	FY2022 Management Plan	FY2023 Governor	FY2022 Management Plan vs FY2023 Governor	
71000 Personal Services	150,533.0	141,851.6	141,851.6	133,780.7	133,780.7	0.0	0.0%
72000 Travel	480.7	3,333.4	3,333.4	2,674.3	2,674.3	0.0	0.0%
73000 Services	47,563.8	64,380.0	64,055.0	67,850.0	67,950.0	100.0	0.1%
74000 Commodities	8,429.0	10,825.1	10,825.1	8,532.8	8,532.8	0.0	0.0%
75000 Capital Outlay	5,408.4	5,986.0	5,986.0	5,832.0	5,832.0	0.0	0.0%
77000 Grants, Benefits	16,221.3	16,146.3	16,146.3	16,045.6	16,045.6	0.0	0.0%
78000 Miscellaneous	2,913.3	4,539.9	4,539.9	4,226.7	4,226.7	0.0	0.0%
Totals	231,549.5	247,062.3	246,737.3	238,942.1	239,042.1	100.0	0.0%
Fund Sources:							
1002 Fed Rcpts (Fed)	26,585.3	28,295.2	28,295.2	29,795.2	29,795.2	0.0	0.0%
1003 G/F Match (UGF)	19.8	19.8	19.8	19.8	19.8	0.0	0.0%
1004 Gen Fund (UGF)	82,457.0	82,524.5	82,524.5	82,993.1	82,993.1	0.0	0.0%
1007 I/A Rcpts (Other)	11,782.9	5,826.2	5,826.2	5,826.2	5,826.2	0.0	0.0%
1037 GF/MH (UGF)	718.3	1,080.8	755.8	755.8	855.8	100.0	13.2%
1048 Univ Rcpt (DGF)	79,879.8	116,311.8	116,311.8	106,711.7	106,711.7	0.0	0.0%
1061 CIP Rcpts (Other)	310.3	400.0	400.0	400.0	400.0	0.0	0.0%
1092 MHTAAR (Other)	1,612.3	1,698.1	1,698.1	1,698.1	1,698.1	0.0	0.0%
1151 VoTech Ed (DGF)	2,185.2	2,021.1	2,021.1	1,857.4	1,857.4	0.0	0.0%
1174 UA I/A (Other)	14,671.8	8,884.8	8,884.8	8,884.8	8,884.8	0.0	0.0%
1265 COVID Fed (Fed)	11,326.8	0.0	0.0	0.0	0.0	0.0	0.0%
Unrestricted General (UGF)	83,195.1	83,625.1	83,300.1	83,768.7	83,868.7	100.0	0.1%
Designated General (DGF)	82,065.0	118,332.9	118,332.9	108,569.1	108,569.1	0.0	0.0%
Other Funds	28,377.3	16,809.1	16,809.1	16,809.1	16,809.1	0.0	0.0%
Federal Funds	37,912.1	28,295.2	28,295.2	29,795.2	29,795.2	0.0	0.0%
Positions:							
Permanent Full Time	1,263	1,263	1,263	1,191	1,191	0	0.0%
Permanent Part Time	37	37	37	37	37	0	0.0%
Non Permanent	0	0	0	0	0	0	0.0%

Change Record Detail - Multiple Scenarios with Descriptions
University of Alaska

Component: Anchorage Campus (753)
RDU: University of Alaska Anchorage (235)

Scenario/Change Record Title	Trans Type	Totals	Personal Services	Travel	Services	Commodities	Capital Outlay	Grants, Benefits	Miscellaneous	Positions		NP
										PFT	PPT	
***** Changes From FY2022 Conference Committee To FY2022 Authorized *****												
FY2022 Conference Committee												
	ConfCom	247,062.3	141,851.6	3,333.4	64,380.0	10,825.1	5,986.0	16,146.3	4,539.9	1,263	37	0
1002 Fed Rcpts		28,295.2										
1003 G/F Match		19.8										
1004 Gen Fund		82,524.5										
1007 I/A Rcpts		5,826.2										
1037 GF/MH		1,080.8										
1048 Univ Rcpt		116,311.8										
1061 CIP Rcpts		400.0										
1092 MHTAAR		1,698.1										
1151 VoTech Ed		2,021.1										
1174 UA I/A		8,884.8										
MH Trust: Alaska Justice Information Center												
	Veto	-225.0	0.0	0.0	-225.0	0.0	0.0	0.0	0.0	0	0	0
1037 GF/MH		-225.0										
The Mental Health Trust Authority should support the expenses necessary for activities and programs they recommend for the state's integrated comprehensive mental health program.												
MH Trust: The Alaska Training Cooperative												
	Veto	-100.0	0.0	0.0	-100.0	0.0	0.0	0.0	0.0	0	0	0
1037 GF/MH		-100.0										
The Mental Health Trust Authority should support the expenses necessary for activities and programs they recommend for the state's integrated comprehensive mental health program.												
Subtotal		246,737.3	141,851.6	3,333.4	64,055.0	10,825.1	5,986.0	16,146.3	4,539.9	1,263	37	0
***** Changes From FY2022 Authorized To FY2022 Management Plan *****												
Distribute Federal Receipt Authority Reductions												
	Trin	1,500.0	0.0	0.0	1,500.0	0.0	0.0	0.0	0.0	0	0	0
1002 Fed Rcpts		1,500.0										
Distribute Federal Receipt Authority Reductions to better align estimated expenditures.												
\$3,000.0 - Systemwide Budget Reductions/Additions \$1,500.0 - Anchorage Campus (\$4,000.0) - Fairbanks Campus (\$ 400.0) - UAF Community and Technical College												

Change Record Detail - Multiple Scenarios with Descriptions
University of Alaska

Component: Anchorage Campus (753)
RDU: University of Alaska Anchorage (235)

Scenario/Change Record Title	Trans Type	Totals	Personal Services	Travel	Services	Commodities	Capital Outlay	Grants, Benefits	Miscellaneous	Positions		NP
										PFT	PPT	
(\$ 100.0) - Systemwide Services												
Transfer Technical Vocational Education Program Funds to Align with Distributions												
1151 VoTech Ed	Trout	-163.7	0.0	0.0	-163.7	0.0	0.0	0.0	0.0	0	0	0
Transfers between allocations to reallocate Vocational Technical Funding to FY2022 Programs approved by the UA Workforce Development Committee.												
\$233.2 - Budget Reductions/Additions - Systemwide (\$45.3) - Systemwide Services (\$163.7) - Anchorage Campus \$71.4 - Fairbanks Campus (\$95.6) - UAF Community and Technical College												
Transfer Authority for HR & Procurement Costing Model												
1004 Gen Fund	Trin	2,025.2	0.0	0.0	2,025.2	0.0	0.0	0.0	0.0	0	0	0
Transfer general fund from Systemwide Services to campuses to cover expenses related to the HR and Procurement costing model.												
(\$4,709.2) - Systemwide Services \$2,502.4 - Fairbanks Campus \$181.6 - UAF Community and Technical College \$2,025.2 - Anchorage Campus												
Transfer Authority to Distribute \$4.3M of the Unallocated Reduction												
1004 Gen Fund	Trout	-1,556.6	0.0	0.0	-1,556.6	0.0	0.0	0.0	0.0	0	0	0
Transfers between allocations that University management and the Board of Regents have deemed necessary to accurately reflect revenue and expenditure levels for FY2022.												
\$4,300.0 - Systemwide Budget Reductions/Additions (\$1,556.6) - Anchorage Campus (\$2,182.5.0) - Fairbanks Campus \$66.9 - UAF Community and Technical College (\$627.8) - Systemwide Services \$3,750.0 - Systemwide Services (\$3,750.0) - Office of Information Technology \$158.0 - Juneau Campus (\$85.0) - Ketchikan Campus (\$73.0) - Sitka Campus												

Change Record Detail - Multiple Scenarios with Descriptions
University of Alaska

Component: Anchorage Campus (753)
RDU: University of Alaska Anchorage (235)

Scenario/Change Record Title	Trans Type	Totals	Personal Services	Travel	Services	Commodities	Capital Outlay	Grants, Benefits	Miscellaneous	Positions		NP
										PFT	PPT	
Distribute University of Alaska Receipt Authority Reductions												
	Trout	-9,500.0	0.0	0.0	-9,500.0	0.0	0.0	0.0	0.0	0	0	0
1048 Univ Rcpt		-9,500.0										
Distribute University of Alaska Receipt Authority Reductions to better align estimated expenditures.												
\$17,214.5 - Systemwide Budget Reductions/Additions (\$9,500.0) - Anchorage Campus (\$7,000.0) - Fairbanks Campus (\$ 600.0) - UAF Community and Technical College (\$ 114.5) - Systemwide Services												
Transfer University Receipt Authority to Align Budgets with Anticipated Revenue												
	Trout	-100.1	0.0	0.0	-100.1	0.0	0.0	0.0	0.0	0	0	0
1048 Univ Rcpt		-100.1										
Transfers between allocations that University management and the Board of Regents have deemed necessary to accurately reflect revenue and expenditure levels for FY2022.												
(\$4,997.6) - Systemwide Services \$3,856.3 - Office of Information Technology \$1,241.4 - Education Trust of Alaska (\$ 100.1) - Anchorage Campus												
Return Positions Related to General Fund Reduction												
	PosAdj	0.0	0.0	0.0	0.0	0.0	0.0	0.0	0.0	-72	0	0
Return positions related to the FY2022 \$4.3M general fund reduction that University management and the Board of Regents have deemed necessary.												
Full-Time PCN Deletions: -72 Anchorage Campus -4 Kenai Peninsula Campus -1 Kodiak College -2 Matanuska Susitna College -7 Sitka Campus Part-Time PCN Deletions: -1 Matanuska Susitna College												
Align Authority with Anticipated Expenditures												
	LIT	0.0	-8,070.9	-659.1	11,590.2	-2,292.3	-154.0	-100.7	-313.2	0	0	0

Change Record Detail - Multiple Scenarios with Descriptions
University of Alaska

Component: Anchorage Campus (753)
RDU: University of Alaska Anchorage (235)

Scenario/Change Record Title	Trans Type	Totals	Personal Services	Travel	Services	Commodities	Capital Outlay	Grants, Benefits	Miscellaneous	Positions		NP
										PFT	PPT	
Transfers between expenditure categories that University management and the Board of Regents have deemed necessary to accurately reflect expenditure levels for FY2022												
	Subtotal	238,942.1	133,780.7	2,674.3	67,850.0	8,532.8	5,832.0	16,045.6	4,226.7	1,191	37	0
***** Changes From FY2022 Management Plan To FY2023 Governor *****												
Reverse MH Trust: Traumatic & Acquired Brain Injury (TABI) Advisory Council Staff												
	OTI	-105.0	0.0	0.0	-105.0	0.0	0.0	0.0	0.0	0	0	0
1092 MHTAAR		-105.0										
Reverse Mental Health Trust recommendation to reflect zero-based mental health budget.												
Reverse MH Trust: The Alaska Training Cooperative												
	OTI	-885.6	0.0	0.0	-885.6	0.0	0.0	0.0	0.0	0	0	0
1092 MHTAAR		-885.6										
Reverse Mental Health Trust recommendation to reflect zero-based mental health budget.												
Reverse MH Trust: Supported Employment Workforce												
	OTI	-100.0	0.0	0.0	-100.0	0.0	0.0	0.0	0.0	0	0	0
1092 MHTAAR		-100.0										
Reverse Mental Health Trust recommendation to reflect zero-based mental health budget.												
Reverse MH Trust: Specialized Skills & Services Training on Serving Criminal Justice Involved Beneficiaries												
	OTI	-72.5	0.0	0.0	-72.5	0.0	0.0	0.0	0.0	0	0	0
1092 MHTAAR		-72.5										
Reverse Mental Health Trust recommendation to reflect zero-based mental health budget.												
Reverse MH Trust: Microenterprise Capital												
	OTI	-175.0	0.0	0.0	-175.0	0.0	0.0	0.0	0.0	0	0	0
1092 MHTAAR		-175.0										
Reverse Mental Health Trust recommendation to reflect zero-based mental health budget.												
Reverse MH Trust: Interpersonal Violence Prevention for Beneficiaries												
	OTI	-80.0	0.0	0.0	-80.0	0.0	0.0	0.0	0.0	0	0	0
1092 MHTAAR		-80.0										
Reverse Mental Health Trust recommendation to reflect zero-based mental health budget.												

Change Record Detail - Multiple Scenarios with Descriptions
University of Alaska

Component: Anchorage Campus (753)
RDU: University of Alaska Anchorage (235)

Scenario/Change Record Title	Trans Type	Totals	Personal Services	Travel	Services	Commodities	Capital Outlay	Grants, Benefits	Miscellaneous	Positions		
										PFT	PPT	NP
Reverse MH Trust: Alaska Justice Information Center												
1092 MHTAAR	OTI	-225.0	0.0	0.0	-225.0	0.0	0.0	0.0	0.0	0	0	0
Reverse Mental Health Trust recommendation to reflect zero-based mental health budget.												
Reverse MH Trust: Alaska Area Health Education Centers												
1092 MHTAAR	OTI	-55.0	0.0	0.0	-55.0	0.0	0.0	0.0	0.0	0	0	0
Reverse Mental Health Trust recommendation to reflect zero-based mental health budget.												
MH Trust: The Alaska Training Cooperative												
1037 GF/MH	IncT	100.0	0.0	0.0	100.0	0.0	0.0	0.0	0.0	0	0	0
The Alaska Training Cooperative (AKTC) will promote career development opportunities for non-degreed professionals, direct service workers, supervisors, and professionals in the behavioral health, home and community-based, and long-term care support services working with Alaska Mental Health Trust Authority beneficiaries. Strategies include technical assistance and training which is accessible and coordinated and available in rural Alaskan communities by blending evidence-based practices with traditional wisdom. The AKTC will collaborate with other training entities, document, and report training data and when needed, respond to Trust staff and provider requests for additional training related to Medicaid expansion, reform, and redesign as well as Criminal Justice Reinvestment.												
MH Trust: Traumatic and Acquired Brain Injury (TABI) Advisory Council Staff												
1092 MHTAAR	IncT	105.0	0.0	0.0	105.0	0.0	0.0	0.0	0.0	0	0	0
This project supports staff for the Traumatic & Acquired Brain Injury (TABI) Advisory Council to maintain state operating infrastructure. Staff are responsible for leading and maintaining the State of Alaska Traumatic and Acquired Brain Injury (TABI) Advisory Council in coordination with Senior and Disabilities Services (SDS) and the Trust. Work performed by the staff includes gathering data for reporting, coordination of advocacy and planning, and preparing ongoing grant progress reports to SDS and the Trust. Staff work to maximize other state and federal funding opportunities for Mental Health Trust Authority authorized receipts (MHTAAR) projects and to ensure effective use of available dollars. In addition, staff act as liaison with the other beneficiary boards, including participating in the development of state plans, working on collaborative projects, and other duties. Outcomes and reporting requirements are negotiated with the Trust annually.												
MH Trust: Interpersonal Violence Prevention for Beneficiaries												
1092 MHTAAR	IncT	80.0	0.0	0.0	80.0	0.0	0.0	0.0	0.0	0	0	0
This project builds community behavioral health provider skills and capacity to assume additional risk and time serving and educating offenders with cognitive impairments by using a train-the-trainer model to deliver a social skills curriculum to Trust beneficiaries. It focuses on building capacity within the provider community to prevent interpersonal violence in the lives of adults with cognitive disabilities. Preventing interpersonal violence provides public protection and keeps Alaskans safe. On-going clinical technical assistance and support is provided to the trained facilitators on a bi-monthly basis to address issues on delivering the												

Change Record Detail - Multiple Scenarios with Descriptions
University of Alaska

Component: Anchorage Campus (753)
RDU: University of Alaska Anchorage (235)

Scenario/Change Record Title	Trans Type	Totals	Personal Services	Travel	Services	Commodities	Capital Outlay	Grants, Benefits	Miscellaneous	Positions		NP	
										PFT	PPT		
training to beneficiaries and on community capacity building to support beneficiaries to apply what they learn in their everyday lives.													
The FY2023 Mental Health Trust Authority Authorized Receipt (MHTAAR) increment maintains the FY2022 level of funding and momentum of effort.													
MH Trust: Specialized Skills and Services Training on Serving Criminal Justice Involved Beneficiaries													
1092 MHTAAR	IncT	72.5	72.5	0.0	0.0	72.5	0.0	0.0	0.0	0.0	0	0	0
This project coordinates a two-day statewide conference focusing on best-practice community treatment modalities, interventions, and supports for serving offenders in the community with cognitive impairments. The project will be managed by University of Alaska - Anchorage Campus through the Alaska Training Cooperative at the Center for Human Development.													
This project maintains a critical component of the Trust's focus on criminal justice reform by ensuring our state's community behavioral health and developmental disability workforce has the necessary skills and competencies for treating and supporting Trust beneficiary offenders. This strategy increases the safety of the community and direct care providers while minimizing the risk that the offender will be institutionalized within a correctional or psychiatric institution.													
The FY2023 Mental Health Trust Authority Authorized Receipt (MHTAAR) increment maintains the FY2022 momentum of effort.													
MH Trust: Alaska Justice Information Center													
1092 MHTAAR	IncT	225.0	225.0	0.0	0.0	225.0	0.0	0.0	0.0	0.0	0	0	0
Support the continued operations of the Alaska Justice Information Center (AJiC) which collects data from key criminal justice agencies to create an integrated data platform that supports criminal justice research in Alaska. For example, the AJiC will provide (1) reports on the state of the criminal justice system in Alaska, (2) answers to data questions from agencies and legislators, and (3) reports on the status of Trust beneficiaries within the criminal justice system. The AJiC will have the capacity to develop an Alaska-based inventory of best practices for public protection and keeping Alaskans safe as well as fostering economic development and self-sufficiency.													
The FY2023 Mental Health Trust Authority Authorized Receipt (MHTAAR) increment maintains the FY2022 level of funding and momentum of effort.													
MH Trust: Microenterprise Capital													
1092 MHTAAR	IncT	175.0	175.0	0.0	0.0	175.0	0.0	0.0	0.0	0.0	0	0	0
The Trust microenterprise fund has provided beneficiaries with a unique avenue to access startup funding for microenterprises which support individuals with disabilities seeking to start or expand small businesses and increase their own self-sufficiency. Small business development supports broader economic development as well, particularly in rural and remote communities where employment opportunities are limited.													
The fund was designed to provide an option for beneficiaries that might not be eligible for startup funding assistance through traditional paths including banks, credit unions, and other traditional lending sources. This project provides resources for small business technical assistance and development to provide ongoing support to individuals with a disability establishing small businesses and self-employment. The University of Alaska Anchorage, Center for Human Development will continue to administer these funds.													

Change Record Detail - Multiple Scenarios with Descriptions
University of Alaska

Component: Anchorage Campus (753)
RDU: University of Alaska Anchorage (235)

Scenario/Change Record Title	Trans Type	Totals	Personal Services	Travel	Services	Commodities	Capital Outlay	Grants, Benefits	Miscellaneous	Positions		
										PFT	PPT	NP
Microenterprise is a component of services developed under the Trust's beneficiary employment and engagement focus area that provide alternative and innovative resources, and greater options for beneficiary self-sufficiency and economic independence.												
MH Trust: Supported Employment Workforce												
	IncT	100.0	0.0	0.0	100.0	0.0	0.0	0.0	0.0	0	0	0
1092 MHTAAR		100.0										

The Center for Human Development (CHD) at the University of Alaska Anchorage will continue to expand workforce development and educational opportunities related to Trust Beneficiary Employment and Engagement strategies. A highly trained workforce is critical to ensure access to supported employment and related services as beneficiaries seek competitive integrated employment. CHD will respond to supported employment workforce needs identified in an FY2020 needs assessment.

One aspect of this response will involve adapting and integrating Individual Placement and Supports (IPS) training to the current supported employment curriculum. CHD will also continue to implement a multi-level approach to benefits counseling to ensure service providers have the capacity and skills to assist Trust beneficiaries and their families to fully understand how earned income will affect their benefits as they work towards self-sufficiency. In addition, CHD collaborates and supports statewide infrastructure that includes training, credentials, and certification for Community Rehabilitation Providers (CRP's) to provide quality employment placement and retention services.

MH Trust: Alaska Area Health Education Centers												
	IncT	55.0	0.0	0.0	55.0	0.0	0.0	0.0	0.0	0	0	0
1092 MHTAAR		55.0										

Alaska Area Health Education Centers (AHEC) will implement multiple community-based behavioral health day camps that concentrate on behavioral health careers exploration. Locations will include Northwest, Southeast, Yukon-Kuskokwim and others. There will be additional camps around the state depending on availability of staff and need.

With current Medicaid expansion, reform, and redesign as well as criminal justice reinvestment efforts, it is critical that Alaska engage and recruit youth into behavioral health occupations. The day camps will engage and educate students on key topics in behavioral health including abuse, neglect, addiction, grief, stress, and mental health while discovering career paths within the field. Students will explore careers including social work, counseling, behavioral health aides, psychologists, psychiatrists, and other positions within the field of behavioral health and social services. The camp will also include student mental health first aid training for students; opportunity to earn dual credit; presentations from local elders, clinicians, substance abuse counselors, and behavioral health aides; tours of local providers and featured discussion panels.

The AHEC is currently operating in the final year of a three-year grant from the State of Alaska Department of Education and Early Development. This Carl Perkins Postsecondary Career and Technical Education Implementation grant has enhanced the AHEC's ability to operate residential camps in rural communities. The AHEC will be reapplying for continuation funding for this award for another three-year period. The request for proposals was recently released and is due April 15, 2022.

The AHEC was able to secure a Department of Education and Early Development Carl Perkins Postsecondary Career and Technical Education Implementation grant. This three-year grant will allow the AHEC to operate the camps as residential camps in rural communities.

MH Trust: The Alaska Training Cooperative

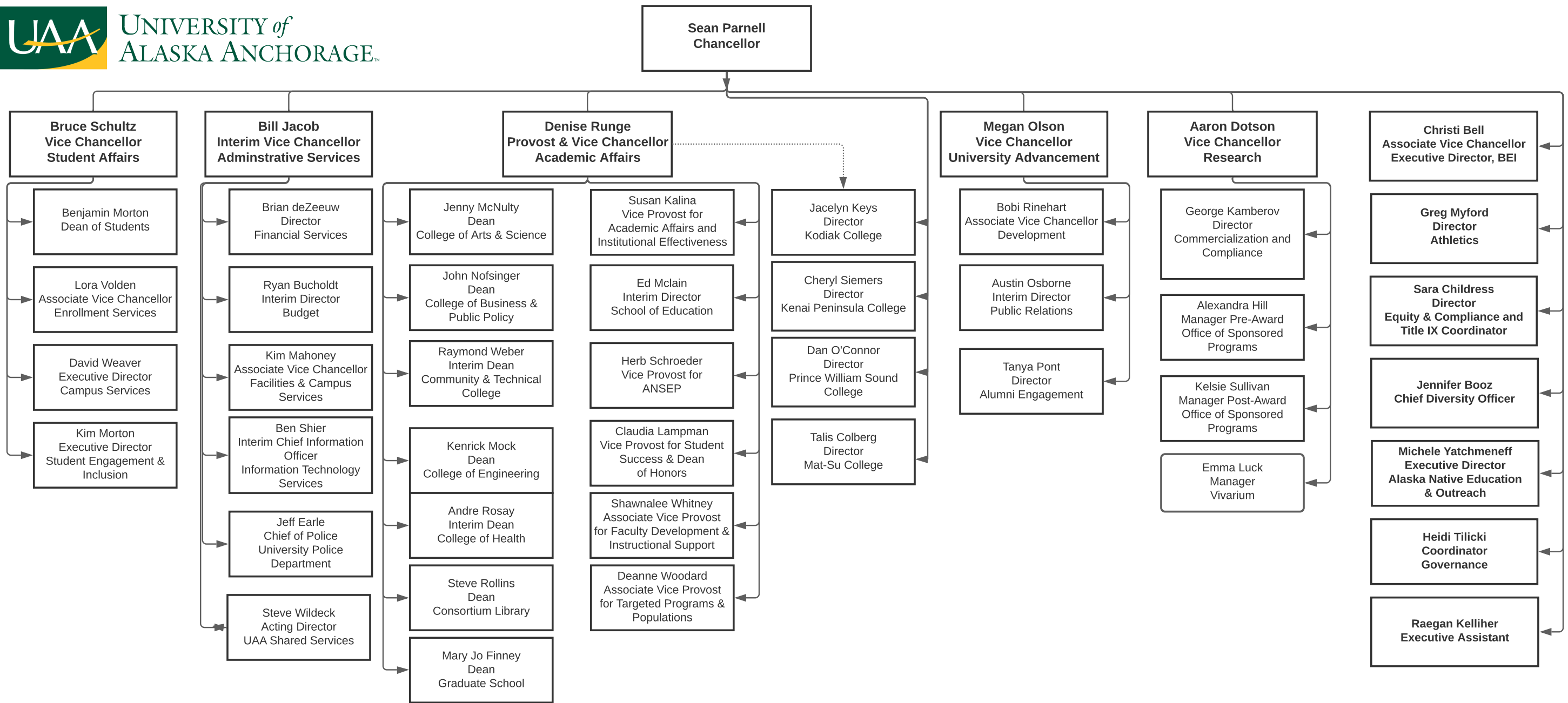
Change Record Detail - Multiple Scenarios with Descriptions
University of Alaska

Component: Anchorage Campus (753)

RDU: University of Alaska Anchorage (235)

Scenario/Change Record Title	Trans Type	Totals	Personal Services	Travel	Services	Commodities	Capital Outlay	Grants, Benefits	Miscellaneous	Positions		
										PFT	PPT	NP
1092 MHTAAR	IncT	885.6	0.0	0.0	885.6	0.0	0.0	0.0	0.0	0	0	0
		885.6										
	Totals	239,042.1	133,780.7	2,674.3	67,950.0	8,532.8	5,832.0	16,045.6	4,226.7	1,191	37	0

The Alaska Training Cooperative (AKTC) will promote career development opportunities for non-degreed professionals, direct service workers, supervisors, and professionals in the behavioral health, home and community-based, and long-term care support services working with Alaska Mental Health Trust Authority beneficiaries. Strategies include technical assistance and training which is accessible and coordinated and available in rural Alaskan communities by blending evidence-based practices with traditional wisdom. The AKTC will collaborate with other training entities, document, and report training data and when needed, respond to Trust staff and provider requests for additional training related to Medicaid expansion, reform, and redesign, as well as Criminal Justice Reinvestment.



Personal Services Expenditure Detail
University of Alaska

Component: Anchorage Campus (753)
RDU: University of Alaska Anchorage (235)

Notes:

1. If a position is split, an asterisk (*) will appear in the Split/Count column. If the split position is also counted in the component, two asterisks (**) will appear in the column.
2. "Pool" PCN refers to UA temporary positions, such as adjunct faculty; student employees; and other non-permanent staff. Multiple incumbents may share the same labor pool position number

PCN	Job Class Title	Location	Time Status	Split/Count	Employee Class	Benefit Rate	Annual	Annual	Total	UGF
							Budgeted Salary	Benefits	Costs	Estimate
300001	Professor	Anchorage	FT		United Academics BU	28.1%	82,973	23,315	106,288	51,769
300015	Professor	Anchorage	FT		United Academics BU	28.1%	85,223	23,948	109,171	53,172
300020	Assistant Professor	Anchorage	FT		United Academics BU	28.1%	100		100	-
300030	Professor	Anchorage	FT		United Academics BU	28.1%	90,692	25,484	116,176	56,585
300035	Associate Professor	Anchorage	FT		United Academics BU	28.1%	77,445	21,762	99,207	48,319
300040	Associate Professor	Anchorage	FT		United Academics BU	28.1%	64,573	18,145	82,718	40,288
300050	Assistant Professor	Anchorage	FT		United Academics BU	28.1%	78,301	22,003	100,304	48,854
300055	Professor	Anchorage	FT		United Academics BU	28.1%	100		100	-
300060	Associate Professor	Anchorage	FT		United Academics BU	28.1%	100		100	-
300065	Assistant Professor	Anchorage	FT		United Academics BU	28.1%	100		100	-
300080	Professor	Anchorage	FT		United Academics BU	28.1%	107,419	30,185	137,604	67,021
300085	Professor	Anchorage	FT		United Academics BU	28.1%	100		100	-
300095	Associate Professor	Anchorage	FT		United Academics BU	28.1%	84,323	23,695	108,018	52,611
300100	Assistant Professor	Anchorage	FT		United Academics BU	28.1%	57,000	16,017	73,017	35,563
300110	Assistant Professor	Anchorage	FT		United Academics BU	28.1%	70,000	19,670	89,670	43,674
300115	Professor	Anchorage	FT		United Academics BU	28.1%	113,506	31,895	145,401	70,819
300120	Associate Professor	Anchorage	FT		United Academics BU	28.1%	82,446	23,167	105,613	51,440
300125	Professor	Anchorage	FT		United Academics BU	28.1%	90,281	25,369	115,650	56,328
300130	Term Instructor	Anchorage	FT		United Academics BU	28.1%	69,444	19,514	88,958	43,328
300135	Assistant Professor	Anchorage	FT		United Academics BU	28.1%	100		100	-
300140	Director (Academic-Faculty)	Anchorage	FT		Non-Represented Faculty	27.7%	175,543	48,625	224,168	109,183
300145	Associate Professor	Anchorage	FT		United Academics BU	28.1%	100		100	-
300175	Assistant Professor	Anchorage	FT		United Academics BU	28.1%	100		100	-
300180	Associate Professor	Anchorage	FT		United Academics BU	28.1%	90,747	25,500	116,247	56,619
300185	Professor	Anchorage	FT		United Academics BU	28.1%	79,909	22,454	102,363	49,857
300195	Associate Professor	Anchorage	FT		United Academics BU	28.1%	69,754	19,601	89,355	43,521
300200	Assistant Professor	Anchorage	FT		United Academics BU	28.1%	100		100	-
300210	Professor	Anchorage	FT		United Academics BU	28.1%	89,402	25,122	114,524	55,780
300230	Associate Professor	Anchorage	FT		United Academics BU	28.1%	100		100	-
300235	Professor	Anchorage	FT		United Academics BU	28.1%	86,586	24,331	110,917	54,023
300245	Associate Professor	Anchorage	FT		United Academics BU	28.1%	100		100	-
300250	Professor	Anchorage	FT		United Academics BU	28.1%	89,240	25,076	114,316	55,679
300255	Professor	Anchorage	FT		United Academics BU	28.1%	93,324	26,224	119,548	58,227
300260	Professor	Anchorage	FT		United Academics BU	28.1%	90,404	25,404	115,808	56,405
300265	Professor	Anchorage	FT		United Academics BU	28.1%	70,546	19,823	90,369	44,015
300270	Assistant Professor	Anchorage	FT		United Academics BU	28.1%	66,660	18,731	85,391	41,591

Personal Services Expenditure Detail
University of Alaska

Component: Anchorage Campus (753)
RDU: University of Alaska Anchorage (235)

Notes:

1. If a position is split, an asterisk (*) will appear in the Split/Count column. If the split position is also counted in the component, two asterisks (**) will appear in the column.
2. "Pool" PCN refers to UA temporary positions, such as adjunct faculty; student employees; and other non-permanent staff. Multiple incumbents may share the same labor pool position number

PCN	Job Class Title	Location	Time Status	Split/ Count	Employee Class	Benefit Rate	Annual	Annual	Total	UGF
							Budgeted	Benefits	Costs	Estimate
300275	Professor	Anchorage	FT		United Academics BU	28.1%	91,064	25,589	116,653	56,817
300280	Assistant Professor	Anchorage	FT		United Academics BU	28.1%	70,195	19,725	89,920	43,796
300290	Assistant Professor	Anchorage	FT		United Academics BU	28.1%	100		100	-
300295	Associate Professor	Anchorage	FT		United Academics BU	28.1%	80,310	22,567	102,877	50,107
300305	Director (Academic-Faculty)	Anchorage	PT		Non-Represented Faculty	27.7%	134,003	37,119	171,122	83,346
300320	Professor	Anchorage	FT		United Academics BU	28.1%	130,658	36,715	167,373	81,520
300325	Professor	Anchorage	FT		United Academics BU	28.1%	103,549	29,097	132,646	64,606
300345	Professor	Anchorage	FT		United Academics BU	28.1%	91,654	25,755	117,409	57,185
300360	Admin Generalist 3	Anchorage	FT		PERS - Classified	51.2%	54,977	28,148	83,125	40,487
300365	Admin Generalist 3	Anchorage	FT		PERS - Classified	51.2%	100		100	-
300370	Admin Specialist 1	Anchorage	FT		PERS - Classified	51.2%	54,977	28,148	83,125	40,487
300375	Admin Generalist 3	Anchorage	FT		PERS - Classified	51.2%	60,155	30,799	90,954	44,300
300380	Fiscal Technician 3	Anchorage	FT		PERS - Classified	51.2%	56,084	28,715	84,799	41,302
300385	Admin Specialist 3	Anchorage	FT		APT - Exempt Employees	39.5%	58,923	23,275	82,198	-
300390	Admin Generalist 3	Anchorage	PT		PERS - Classified	51.2%	24,289	12,436	36,725	17,887
300395	Administrative Professional 1	Anchorage	PT		APT - Exempt Employees	39.5%	42,074	16,619	58,693	-
300400	Admin Generalist 3	Anchorage	FT		PERS - Classified	51.2%	100		100	-
300405	Admin Generalist 1	Anchorage	FT		PERS - Classified	51.2%	51,782	26,512	78,294	38,134
300415	Admin Generalist 3	Anchorage	FT		PERS - Classified	51.2%	54,977	28,148	83,125	40,487
300420	Administrative Professional 3	Anchorage	FT		APT - Exempt Employees	39.5%	89,513	35,358	124,871	60,819
300425	Admin Generalist 3	Anchorage	FT		PERS - Classified	51.2%	100		100	-
300430	Admin Generalist 3	Anchorage	FT		PERS - Classified	51.2%	40,382	20,676	61,058	29,739
300440	Professor	Anchorage	FT		United Academics BU	28.1%	116,989	32,874	149,863	72,992
300445	Assistant Professor	Anchorage	FT		United Academics BU	28.1%	100,485	28,236	128,721	62,695
300455	Assistant Professor	Anchorage	FT		United Academics BU	28.1%	70,700	19,867	90,567	44,111
300465	Assistant Professor	Anchorage	FT		United Academics BU	28.1%	100		100	-
300470	Assistant Professor	Anchorage	FT		United Academics BU	28.1%	100		100	-
300475	Professor	Anchorage	FT		United Academics BU	28.1%	77,056	21,653	98,709	48,077
300485	Associate Professor	Anchorage	FT		United Academics BU	28.1%	66,955	18,814	85,769	41,775
300490	Assistant Professor	Anchorage	FT		United Academics BU	28.1%	100		100	-
300495	Professor	Anchorage	FT		United Academics BU	28.1%	77,002	21,638	98,640	48,043
300500	Associate Professor	Anchorage	FT		United Academics BU	28.1%	88,374	24,833	113,207	55,138
300505	Associate Professor	Anchorage	FT		United Academics BU	28.1%	100		100	-
300510	Professor	Anchorage	FT		United Academics BU	28.1%	91,736	25,778	117,514	57,236
300511	Assistant Professor	Anchorage	FT		United Academics BU	28.1%	100		100	-
300515	Student Svcs Manager 1	Anchorage	FT		APT - Exempt Employees	39.5%	62,577	24,718	87,295	42,518

Personal Services Expenditure Detail
University of Alaska

Component: Anchorage Campus (753)

RDU: University of Alaska Anchorage (235)

Notes:

1. If a position is split, an asterisk (*) will appear in the Split/Count column. If the split position is also counted in the component, two asterisks (**) will appear in the column.

2. "Pool" PCN refers to UA temporary positions, such as adjunct faculty; student employees; and other non-permanent staff. Multiple incumbents may share the same labor pool position number

PCN	Job Class Title	Location	Time Status	Split/ Count	Employee Class	Benefit Rate	Annual	Annual	Total	UGF
							Budgeted Salary	Benefits	Costs	Estimate
300520	Associate Professor	Anchorage	FT		United Academics BU	28.1%	63,272	17,779	81,051	39,477
300525	Associate Professor	Anchorage	FT		United Academics BU	28.1%	155,598	43,723	199,321	97,081
300530	Student Svcs Technician 3	Anchorage	FT		PERS - Classified	51.2%	45,540	23,316	68,856	33,537
300535	Administrative Professional 4	Anchorage	FT		APT - Exempt Employees	39.5%	90,411	35,712	126,123	61,429
300540	Term Instructor	Anchorage	FT		United Academics BU	28.1%	77,416	21,754	99,170	48,301
300545	Admin Generalist 4	Anchorage	FT		PERS - Classified	51.2%	100		100	-
300550	Admin Generalist 4	Anchorage	FT		PERS - Classified	51.2%	60,740	31,099	91,839	44,731
300555	Fiscal Manager 4	Anchorage	FT		APT - Exempt Employees	39.5%	100		100	-
300560	Term Asst Professor	Anchorage	FT		United Academics BU	28.1%	94,629	26,591	121,220	59,041
300565	Administrative Professional 3	Anchorage	FT		APT - Exempt Employees	39.5%	72,642	28,694	101,336	49,356
300570	Communications Specialist 4	Anchorage	FT		APT - Exempt Employees	39.5%	61,930	24,462	86,392	42,078
300575	Associate Professor	Anchorage	FT		United Academics BU	28.1%	138,149	38,820	176,969	86,194
300580	Professor	Anchorage	FT		United Academics BU	28.1%	163,265	45,877	209,142	101,864
300585	Professor	Anchorage	FT		United Academics BU	28.1%	85,667	24,072	109,739	53,449
300590	Associate Professor	Anchorage	FT		United Academics BU	28.1%	104,311	29,311	133,622	65,082
300595	Professor	Anchorage	FT		United Academics BU	28.1%	134,037	37,664	171,701	83,628
300600	Associate Professor	Anchorage	FT		United Academics BU	28.1%	110,000	30,910	140,910	68,631
300605	Professor	Anchorage	FT		United Academics BU	28.1%	156,207	43,894	200,101	97,461
300610	Communications Specialist 3	Anchorage	FT		PERS - Classified	51.2%	46,416	23,765	70,181	34,182
300615	Associate Professor	Anchorage	FT		United Academics BU	28.1%	128,337	36,063	164,400	80,072
300620	Associate Professor	Anchorage	FT		United Academics BU	28.1%	100		100	-
300625	Term Instructor	Anchorage	FT		United Academics BU	28.1%	68,850	19,347	88,197	42,957
300630	Associate Professor	Anchorage	FT		United Academics BU	28.1%	119,853	33,679	153,532	74,779
300635	Assistant Professor	Anchorage	FT		United Academics BU	28.1%	100		100	-
300640	Professor	Anchorage	FT		United Academics BU	28.1%	137,899	38,750	176,649	44,998
300645	Administrative Professional 3	Anchorage	FT		APT - Exempt Employees	39.5%	79,448	31,382	110,830	53,981
300650	Professor	Anchorage	FT		United Academics BU	28.1%	118,191	33,212	151,403	73,742
300655	Professor	Anchorage	FT		United Academics BU	28.1%	118,277	33,236	151,513	73,795
300660	Assistant Professor	Anchorage	FT		United Academics BU	28.1%	100		100	-
300665	Professor	Anchorage	FT		United Academics BU	28.1%	100		100	-
300670	Assistant Professor	Anchorage	FT		United Academics BU	28.1%	99,996	28,099	128,095	62,390
300675	Assistant Professor	Anchorage	FT		United Academics BU	28.1%	100		100	-
300680	Fiscal Professional 2	Anchorage	FT		APT - Exempt Employees	39.5%	68,403	27,019	95,422	46,476
300685	Assistant Professor	Anchorage	FT		United Academics BU	28.1%	67,528	18,975	86,503	42,132
300690	Assistant Professor	Anchorage	FT		United Academics BU	28.1%	79,997	22,479	102,476	49,912
300695	Student Svcs Manager 2	Anchorage	FT		APT - Exempt Employees	39.5%	70,470	27,836	98,306	47,880

Personal Services Expenditure Detail
University of Alaska

Component: Anchorage Campus (753)

RDU: University of Alaska Anchorage (235)

Notes:

1. If a position is split, an asterisk (*) will appear in the Split/Count column. If the split position is also counted in the component, two asterisks (**) will appear in the column.
2. "Pool" PCN refers to UA temporary positions, such as adjunct faculty; student employees; and other non-permanent staff. Multiple incumbents may share the same labor pool position number

PCN	Job Class Title	Location	Time Status	Split/ Count	Employee Class	Benefit Rate	Annual	Annual	Total	UGF
							Budgeted Salary	Benefits	Costs	Estimate
300700	Research Professional 2	Anchorage	FT		APT - Exempt Employees	39.5%	57,796	22,829	80,625	39,269
300705	Assistant Professor	Anchorage	FT		United Academics BU	28.1%	90,900	25,543	116,443	56,714
300710	Associate Professor	Anchorage	FT		United Academics BU	28.1%	135,793	38,158	173,951	84,724
300715	Term Asst Professor	Anchorage	FT		United Academics BU	28.1%	116,579	32,759	149,338	72,736
300730	Term Asst Professor	Anchorage	FT		United Academics BU	28.1%	118,624	33,333	151,957	74,012
300735	Fiscal Technician 3	Anchorage	FT		PERS - Classified	51.2%	45,539	23,316	68,855	33,536
300740	Assistant Professor	Anchorage	FT		Non-Represented Faculty	27.7%	171,657	47,549	219,206	106,766
300745	Professor	Anchorage	FT		United Academics BU	28.1%	111,726	31,395	143,121	69,708
300750	Assistant Professor	Anchorage	FT		United Academics BU	28.1%	57,570	16,177	73,747	35,919
300755	Professor	Anchorage	FT		United Academics BU	28.1%	49,194	13,824	63,018	-
300760	Associate Professor	Anchorage	FT		United Academics BU	28.1%	89,249	25,079	114,328	55,684
300770	Assistant Professor	Anchorage	FT		United Academics BU	28.1%	75,000	21,075	96,075	46,794
300780	Professor	Anchorage	FT		United Academics BU	28.1%	159,120	44,713	203,833	99,278
300795	Assistant Professor	Anchorage	PT		United Academics BU	28.1%	35,898	10,087	45,985	22,397
300805	Admin Generalist 4	Anchorage	FT		PERS - Classified	51.2%	54,977	28,148	83,125	40,487
300815	Assistant Professor	Anchorage	FT		United Academics BU	28.1%	105,738	29,712	135,450	65,972
300825	Associate Professor	Anchorage	FT		United Academics BU	28.1%	83,720	23,525	107,245	52,235
300830	Safety Svcs-Police 2	Anchorage	FT		PERS - Classified	51.2%	54,455	27,881	82,336	40,102
300835	Associate Professor	Anchorage	FT		United Academics BU	28.1%	65,007	18,267	83,274	40,559
300840	Assistant Professor	Anchorage	FT		United Academics BU	28.1%	116,259	32,669	148,928	72,536
300850	Assistant Professor	Anchorage	FT		United Academics BU	28.1%	72,720	20,434	93,154	45,371
300855	Assistant Professor	Anchorage	FT		United Academics BU	28.1%	83,000	23,323	106,323	51,785
300860	Associate Professor	Anchorage	FT		United Academics BU	28.1%	88,375	24,833	113,208	55,139
300865	Student Svcs Professional 3	Anchorage	FT		APT - Exempt Employees	39.5%	100		100	-
300870	Assistant Professor	Anchorage	FT		United Academics BU	28.1%	99,360	27,920	127,280	61,993
300875	Safety Svcs-Emerg Dispatcher 1	Anchorage	FT		PERS - Classified	51.2%	42,401	21,709	64,110	31,225
300880	Assistant Professor	Anchorage	FT		United Academics BU	28.1%	80,001	22,480	102,481	49,914
300885	Assistant Professor	Anchorage	FT		United Academics BU	28.1%	70,434	19,792	90,226	43,945
300895	Instructional Designer 3	Anchorage	FT		APT - Exempt Employees	39.5%	65,105	25,716	90,821	44,235
300900	Fiscal Technician 3	Anchorage	FT		PERS - Classified	51.2%	58,923	30,169	89,092	43,393
300905	Admin Generalist 4	Anchorage	FT		PERS - Classified	51.2%	45,539	23,316	68,855	33,536
300915	Human Resources Technician 3	Anchorage	FT		PERS - Classified	51.2%	50,780	25,999	76,779	37,396
300920	Admin Generalist 4	Anchorage	FT		PERS - Classified	51.2%	56,668	29,014	85,682	41,732
300925	Student Svcs Technician 2	Anchorage	FT		PERS - Classified	51.2%	100		100	-
300940	Development 2	Anchorage	FT		PERS - Classified	51.2%	53,369	27,325	80,694	-
300955	IS Net Technician 7	Anchorage	FT		PERS - Classified	51.2%	66,378	33,986	100,364	48,883

Personal Services Expenditure Detail
University of Alaska

Component: Anchorage Campus (753)
RDU: University of Alaska Anchorage (235)

Notes:

1. If a position is split, an asterisk (*) will appear in the Split/Count column. If the split position is also counted in the component, two asterisks (**) will appear in the column.
2. "Pool" PCN refers to UA temporary positions, such as adjunct faculty; student employees; and other non-permanent staff. Multiple incumbents may share the same labor pool position number

PCN	Job Class Title	Location	Time Status	Split/ Count	Employee Class	Benefit Rate	Annual	Annual	Total	UGF
							Budgeted Salary	Benefits	Costs	Estimate
300960	Broadcast/Media Professional 4	Anchorage	FT		APT - Exempt Employees	39.5%	70,470	27,836	98,306	47,880
300965	Student Svcs Technician 2	Anchorage	FT		PERS - Classified	51.2%	51,260	26,245	77,505	33,974
300980	Term Asst Professor	Anchorage	FT		United Academics BU	28.1%	68,000	19,108	87,108	42,427
300985	Professor	Anchorage	PT		Non-Represented Faculty	27.7%	144,971	40,157	185,128	90,168
300990	Assistant Professor	Anchorage	FT		United Academics BU	28.1%	64,640	18,164	82,804	40,330
301000	Associate Professor	Anchorage	FT		United Academics BU	28.1%	96,870	27,220	124,090	60,439
301020	Administrative Professional 3	Anchorage	FT		APT - Exempt Employees	39.5%	81,829	32,322	114,151	55,598
301025	Admin Specialist 1	Anchorage	FT		PERS - Classified	51.2%	54,978	28,149	83,127	40,487
301035	Admin Specialist 3	Anchorage	FT		APT - Exempt Employees	39.5%	58,923	23,275	82,198	40,035
301055	Professor	Anchorage	FT		United Academics BU	28.1%	51,813	14,559	66,372	32,327
301059	Assistant Professor	Anchorage	FT		United Academics BU	28.1%	53,592	15,059	68,651	33,437
301061	Term Asst Professor	Anchorage	FT		United Academics BU	28.1%	68,500	19,249	87,749	42,739
301065	Term Instructor	Anchorage	FT		United Academics BU	28.1%	73,361	20,614	93,975	45,771
301070	Admin Generalist 4	Anchorage	FT		PERS - Classified	51.2%	53,891	27,592	81,483	39,687
301077	IS Professional 2A	Anchorage	FT		PERS - Classified	51.2%	82,664	42,324	124,988	60,876
301081	Professor	Anchorage	FT		United Academics BU	28.1%	97,027	27,265	124,292	60,537
301082	Associate Professor	Anchorage	FT		United Academics BU	28.1%	82,990	23,320	106,310	46,601
301083	Professor	Anchorage	FT		United Academics BU	28.1%	122,120	34,316	156,436	76,193
301085	Associate Professor	Anchorage	FT		United Academics BU	28.1%	131,300	36,895	168,195	81,921
301086	Professor	Anchorage	FT		United Academics BU	28.1%	141,073	39,642	180,715	74,816
301087	Fiscal Technician 3	Anchorage	FT		PERS - Classified	51.2%	45,335	23,212	68,547	33,386
301089	Term Asst Professor	Anchorage	FT		United Academics BU	28.1%	75,754	21,287	97,041	47,264
301091	Assistant Professor	Anchorage	FT		United Academics BU	28.1%	75,000	21,075	96,075	46,794
301092	Professor	Anchorage	FT		United Academics BU	28.1%	63,719	17,905	81,624	39,756
301093	Professor	Anchorage	FT		United Academics BU	28.1%	113,074	31,774	144,848	70,549
301094	Professor	Anchorage	FT		United Academics BU	28.1%	127,199	35,743	162,942	79,362
301095	Associate Professor	Anchorage	FT		United Academics BU	28.1%	100		100	-
301097	Assistant Professor	Anchorage	FT		United Academics BU	28.1%	138,000	38,778	176,778	86,101
301099	Associate Professor	Anchorage	FT		United Academics BU	28.1%	83,827	23,555	107,382	52,301
301100	Professor	Anchorage	FT		United Academics BU	28.1%	38,658	10,863	49,521	24,120
301101	Associate Professor	Anchorage	FT		United Academics BU	28.1%	71,036	19,961	90,997	44,321
301102	Associate Professor	Anchorage	FT		United Academics BU	28.1%	78,881	22,166	101,047	49,215
301103	Associate Professor	Anchorage	FT		United Academics BU	28.1%	100		100	-
301104	Assistant Professor	Anchorage	FT		United Academics BU	28.1%	76,003	21,357	97,360	47,420
301107	Research Technician 3	Anchorage	FT		PERS - Classified	51.2%	41,398	21,196	62,594	30,487
301108	Student Svcs Professional 2	Anchorage	FT		PERS - Classified	51.2%	51,782	26,512	78,294	38,134

Personal Services Expenditure Detail
University of Alaska

Component: Anchorage Campus (753)

RDU: University of Alaska Anchorage (235)

Notes:

1. If a position is split, an asterisk (*) will appear in the Split/Count column. If the split position is also counted in the component, two asterisks (**) will appear in the column.

2. "Pool" PCN refers to UA temporary positions, such as adjunct faculty; student employees; and other non-permanent staff. Multiple incumbents may share the same labor pool position number

PCN	Job Class Title	Location	Time Status	Split/ Count	Employee Class	Benefit Rate	Annual	Annual	Total	UGF
							Budgeted Salary	Benefits	Costs	Estimate
301110	Associate Professor	Anchorage	FT		United Academics BU	28.1%	51,932	14,593	66,525	32,401
301112	IS Professional 3A	Anchorage	FT		APT - Exempt Employees	39.5%	71,890	28,397	100,287	48,845
301114	IS Professional 5A	Anchorage	FT		APT - Exempt Employees	39.5%	97,927	38,681	136,608	66,536
301117	Assistant Professor	Anchorage	FT		United Academics BU	28.1%	70,000	19,670	89,670	43,674
301120	Professor	Anchorage	FT		United Academics BU	28.1%	80,127	22,516	102,643	49,993
301121	Professor	Anchorage	FT		United Academics BU	28.1%	103,870	29,187	133,057	64,807
301123	Professor	Anchorage	FT		United Academics BU	28.1%	90,601	25,459	116,060	56,528
301125	Assistant Professor	Anchorage	FT		United Academics BU	28.1%	60,600	17,029	77,629	37,810
301126	Director (Academic-Faculty)	Anchorage	FT		Non-Represented Faculty	27.7%	138,395	38,335	176,730	86,078
301127	Assistant Professor	Anchorage	FT		United Academics BU	28.1%	93,198	26,189	119,387	58,148
301128	Assistant Professor	Anchorage	FT		United Academics BU	28.1%	78,000	21,918	99,918	48,666
301131	Professor	Anchorage	FT		United Academics BU	28.1%	99,467	27,950	127,417	48,406
301133	Associate Professor	Anchorage	FT		United Academics BU	28.1%	96,055	26,991	123,046	59,931
301134	Associate Professor	Anchorage	FT		United Academics BU	28.1%	93,258	26,205	119,463	58,186
301135	Professor	Anchorage	FT		United Academics BU	28.1%	81,772	22,978	104,750	51,019
301137	Assistant Professor	Anchorage	FT		United Academics BU	28.1%	94,304	26,499	120,803	58,838
301139	Professor	Anchorage	FT		United Academics BU	28.1%	93,344	26,230	119,574	58,239
301140	Communications Specialist 3	Anchorage	FT		PERS - Classified	51.2%	51,782	26,512	78,294	38,134
301141	Admin Generalist 4	Anchorage	FT		PERS - Classified	51.2%	51,260	26,245	77,505	37,749
301144	Term Instructor	Anchorage	FT		United Academics BU	28.1%	48,480	13,623	62,103	30,248
301148	Director (Academic-Faculty)	Anchorage	FT		Non-Represented Faculty	27.7%	104,013	28,812	132,825	64,693
301151	Assistant Professor	Anchorage	FT		United Academics BU	28.1%	59,994	16,858	76,852	37,431
301152	Professor	Anchorage	FT		United Academics BU	28.1%	88,003	24,729	112,732	54,907
301153	Professor	Anchorage	FT		United Academics BU	28.1%	84,554	23,760	108,314	52,755
301155	Professor	Anchorage	FT		United Academics BU	28.1%	83,038	23,334	106,372	51,809
301156	Assistant Professor	Anchorage	FT		United Academics BU	28.1%	70,700	19,867	90,567	44,111
301158	Term Asst Professor	Anchorage	FT		United Academics BU	28.1%	113,555	31,909	145,464	70,849
301159	Assistant Professor	Anchorage	FT		United Academics BU	28.1%	86,003	24,167	110,170	53,659
301160	Assistant Professor	Anchorage	FT		United Academics BU	28.1%	71,962	20,221	92,183	44,899
301162	Student Svcs Professional 2	Anchorage	FT		PERS - Classified	51.2%	49,778	25,486	75,264	36,658
301164	Term Asst Professor	Anchorage	FT		United Academics BU	28.1%	103,732	29,149	132,881	64,720
301165	Professor	Anchorage	FT		United Academics BU	28.1%	86,941	24,430	111,371	54,244
301166	Assistant Professor	Anchorage	FT		United Academics BU	28.1%	66,800	18,771	85,571	41,678
301167	Associate Professor	Anchorage	FT		United Academics BU	28.1%	75,059	21,092	96,151	46,831
301168	Professor	Anchorage	FT		United Academics BU	28.1%	87,656	24,631	112,287	54,690
301169	Professor	Anchorage	FT		United Academics BU	28.1%	88,215	24,788	113,003	55,039

Personal Services Expenditure Detail
University of Alaska

Component: Anchorage Campus (753)

RDU: University of Alaska Anchorage (235)

Notes:

1. If a position is split, an asterisk (*) will appear in the Split/Count column. If the split position is also counted in the component, two asterisks (**) will appear in the column.

2. "Pool" PCN refers to UA temporary positions, such as adjunct faculty; student employees; and other non-permanent staff. Multiple incumbents may share the same labor pool position number

PCN	Job Class Title	Location	Time Status	Split/ Count	Employee Class	Benefit Rate	Annual	Annual	Total	UGF
							Budgeted Salary	Benefits	Costs	Estimate
301170	Assistant Professor	Anchorage	FT		United Academics BU	28.1%	71,000	19,951	90,951	44,298
301171	Term Instructor	Anchorage	PT		United Academics BU	28.1%	32,741	9,200	41,941	20,428
301173	Associate Professor	Anchorage	FT		United Academics BU	28.1%	94,256	26,486	120,742	58,808
301174	Assistant Professor	Anchorage	FT		United Academics BU	28.1%	110,992	31,189	142,181	69,250
301175	Associate Professor	Anchorage	FT		United Academics BU	28.1%	72,720	20,434	93,154	45,371
301176	Associate Professor	Anchorage	FT		United Academics BU	28.1%	72,884	20,480	93,364	45,474
301177	Associate Professor	Anchorage	FT		United Academics BU	28.1%	81,936	23,024	104,960	51,122
301179	Professor	Anchorage	FT		United Academics BU	28.1%	135,959	38,204	174,163	84,828
301180	Professor	Anchorage	FT		United Academics BU	28.1%	56,629	15,913	72,542	35,332
301181	Assistant Professor	Anchorage	FT		United Academics BU	28.1%	60,715	17,061	77,776	37,881
301182	IS Consultant 2A	Anchorage	FT		PERS - Classified	51.2%	53,892	27,593	81,485	39,688
301183	Professor	Anchorage	FT		United Academics BU	28.1%	100		100	-
301185	Admin Specialist 2	Anchorage	FT		PERS - Classified	51.2%	51,782	26,512	78,294	19,067
301186	Research Technician 4	Anchorage	FT		PERS - Classified	51.2%	49,778	25,486	75,264	36,658
301188	Term Asst Professor	Anchorage	PT		United Academics BU	28.1%	69,539	19,540	89,079	43,387
301189	IS Consultant 2A	Anchorage	FT		PERS - Classified	51.2%	49,778	25,486	75,264	36,658
301191	Director (Academic-Faculty)	Anchorage	FT		Non-Represented Faculty	27.7%	156,138	43,250	199,388	97,113
301192	Training & Development 1	Anchorage	FT		PERS - Classified	51.2%	30,202	15,463	45,665	-
301193	Associate Professor	Anchorage	FT		United Academics BU	28.1%	75,826	21,307	97,133	47,309
301194	Assistant Professor	Anchorage	FT		United Academics BU	28.1%	100		100	-
301196	Associate Professor	Anchorage	FT		United Academics BU	28.1%	82,425	23,161	105,586	51,427
301197	Professor	Anchorage	FT		United Academics BU	28.1%	162,847	45,760	208,607	101,604
301199	Professor	Anchorage	FT		United Academics BU	28.1%	157,728	44,322	202,050	98,410
301200	Professor	Anchorage	FT		United Academics BU	28.1%	82,218	23,103	105,321	51,297
301206	Professor	Anchorage	FT		United Academics BU	28.1%	100,823	28,331	129,154	62,906
301207	Professor	Anchorage	FT		United Academics BU	28.1%	87,249	24,517	111,766	54,436
301211	Associate Dean/Faculty	Anchorage	FT		Non-Represented Faculty	27.7%	160,781	44,536	205,317	100,001
301213	IS Professional 3A	Anchorage	FT		APT - Exempt Employees	39.5%	78,633	31,060	109,693	53,427
301214	Professor	Anchorage	FT		United Academics BU	28.1%	85,265	23,959	109,224	53,199
301215	IS Professional 3A	Anchorage	FT		APT - Exempt Employees	39.5%	71,890	28,397	100,287	48,845
301216	Professor	Anchorage	FT		United Academics BU	28.1%	88,038	24,739	112,777	54,929
301217	Professor	Anchorage	FT		United Academics BU	28.1%	100		100	-
301219	Assistant Professor	Anchorage	FT		United Academics BU	28.1%	63,630	17,880	81,510	39,700
301220	Associate Professor	Anchorage	FT		United Academics BU	28.1%	65,771	18,482	84,253	41,036
301221	Associate Dean/Faculty	Anchorage	FT		Non-Represented Faculty	27.7%	62,188	17,226	79,414	38,679
301223	Associate Professor	Anchorage	FT		United Academics BU	28.1%	61,812	17,369	79,181	38,566

Personal Services Expenditure Detail
University of Alaska

Component: Anchorage Campus (753)

RDU: University of Alaska Anchorage (235)

Notes:

1. If a position is split, an asterisk (*) will appear in the Split/Count column. If the split position is also counted in the component, two asterisks (**) will appear in the column.

2. "Pool" PCN refers to UA temporary positions, such as adjunct faculty; student employees; and other non-permanent staff. Multiple incumbents may share the same labor pool position number

PCN	Job Class Title	Location	Time Status	Split/ Count	Employee Class	Benefit Rate	Annual	Annual	Total	UGF
							Budgeted Salary	Benefits	Costs	Estimate
301224	Associate Professor	Anchorage	FT		United Academics BU	28.1%	132,166	37,139	169,305	82,461
301225	Director (Academic-Faculty)	Anchorage	FT		Non-Represented Faculty	27.7%	171,169	47,414	218,583	106,462
301226	Administrative Professional 2	Anchorage	FT		APT - Exempt Employees	39.5%	77,903	30,772	108,675	52,931
301227	Professor	Anchorage	PT		United Academics BU	28.1%	63,469	17,835	81,304	39,600
301228	Admin Specialist 1	Anchorage	FT		PERS - Classified	51.2%	45,539	23,316	68,855	33,536
301229	Development 4	Anchorage	FT		APT - Exempt Employees	39.5%	95,987	37,915	133,902	65,218
301230	Assistant Professor	Anchorage	FT		United Academics BU	28.1%	90,900	25,543	116,443	56,714
301235	Associate Professor	Anchorage	FT		United Academics BU	28.1%	76,584	21,520	98,104	47,782
301237	Assistant Professor	Anchorage	FT		United Academics BU	28.1%	130,000	36,530	166,530	81,110
301238	Professor	Anchorage	FT		United Academics BU	28.1%	103,502	29,084	132,586	64,577
301241	Associate Professor	Anchorage	FT		United Academics BU	28.1%	72,111	20,263	92,374	44,992
301242	Assistant Professor	Anchorage	FT		United Academics BU	28.1%	84,164	23,650	107,814	52,512
301243	Professor	Anchorage	FT		United Academics BU	28.1%	109,080	30,651	139,731	68,057
301245	Research Technician 4	Anchorage	FT		PERS - Classified	51.2%	67,735	34,680	102,415	49,882
301246	Term Asst Professor	Anchorage	FT		United Academics BU	28.1%	60,600	17,029	77,629	37,810
301248	Professor	Anchorage	FT		United Academics BU	28.1%	54,074	15,195	69,269	33,738
301249	Associate Professor	Anchorage	FT		United Academics BU	28.1%	85,542	24,037	109,579	53,371
301250	Associate Professor	Anchorage	FT		United Academics BU	28.1%	63,328	17,795	81,123	39,512
301251	Professor	Anchorage	PT		United Academics BU	28.1%	71,779	20,170	91,949	44,784
301252	Professor	Anchorage	FT		United Academics BU	28.1%	108,500	30,489	138,989	67,695
301253	Admin Specialist 3	Anchorage	FT		APT - Exempt Employees	39.5%	86,881	34,318	121,199	59,031
301254	Assistant Professor	Anchorage	FT		United Academics BU	28.1%	64,640	18,164	82,804	40,330
301255	Assistant Professor	Anchorage	FT		United Academics BU	28.1%	75,000	21,075	96,075	46,794
301258	Associate Professor	Anchorage	FT		United Academics BU	28.1%	77,776	21,855	99,631	48,526
301259	Term Instructor	Anchorage	FT		United Academics BU	28.1%	48,471	13,620	62,091	30,242
301260	Assistant Professor	Anchorage	FT		United Academics BU	28.1%	75,680	21,266	96,946	23,609
301262	Associate Professor	Anchorage	FT		United Academics BU	28.1%	39,833	11,193	51,026	24,853
301263	Director (Academic-Faculty)	Anchorage	PT		Non-Represented Faculty	27.7%	170,489	47,225	217,714	106,039
301266	Stu Svcs Profess 2 (Exempt)	Anchorage	FT		APT - Exempt Employees	39.5%	56,084	22,153	78,237	38,106
301267	Assistant Professor	Anchorage	FT		United Academics BU	28.1%	62,993	17,701	80,694	39,303
301270	Associate Professor	Anchorage	FT		United Academics BU	28.1%	66,660	18,731	85,391	41,591
301271	Student Svcs Professional 2	Anchorage	FT		PERS - Classified	51.2%	53,369	27,325	80,694	39,303
301272	Associate Professor	Anchorage	FT		United Academics BU	28.1%	63,907	17,958	81,865	39,873
301273	Student Svcs Professional 3	Anchorage	FT		APT - Exempt Employees	39.5%	56,668	22,384	79,052	38,503
301274	Admin Generalist 4	Anchorage	FT		PERS - Classified	51.2%	45,539	23,316	68,855	33,536
301275	Admin Generalist 4	Anchorage	FT		PERS - Classified	51.2%	45,540	23,316	68,856	33,537

Personal Services Expenditure Detail
University of Alaska

Component: Anchorage Campus (753)

RDU: University of Alaska Anchorage (235)

Notes:

1. If a position is split, an asterisk (*) will appear in the Split/Count column. If the split position is also counted in the component, two asterisks (**) will appear in the column.

2. "Pool" PCN refers to UA temporary positions, such as adjunct faculty; student employees; and other non-permanent staff. Multiple incumbents may share the same labor pool position number

PCN	Job Class Title	Location	Time Status	Split/ Count	Employee Class	Benefit Rate	Annual	Annual	Total	UGF
							Budgeted Salary	Benefits	Costs	Estimate
301277	Fiscal Professional 1	Anchorage	FT		PERS - Classified	51.2%	47,356	24,246	71,602	34,874
301278	Student Svcs Professional 4	Anchorage	FT		APT - Exempt Employees	39.5%	80,221	31,687	111,908	54,506
301283	Communications Specialist 3	Anchorage	FT		PERS - Classified	51.2%	49,778	25,486	75,264	36,658
301284	Professor	Anchorage	FT		United Academics BU	28.1%	87,199	24,503	111,702	54,405
301288	Assistant Professor	Anchorage	FT		United Academics BU	28.1%	80,801	22,705	103,506	50,413
301290	Associate Professor	Anchorage	FT		United Academics BU	28.1%	75,150	21,117	96,267	46,888
301292	Professor	Anchorage	FT		United Academics BU	28.1%	93,206	26,191	119,397	58,153
301294	Professor	Anchorage	FT		United Academics BU	28.1%	89,466	25,140	114,606	55,820
301295	Associate Professor	Anchorage	FT		United Academics BU	28.1%	79,802	22,424	102,226	49,790
301303	Professor	Anchorage	FT		United Academics BU	28.1%	93,426	26,253	119,679	58,290
301304	Instructor	Anchorage	FT		United Academics BU	28.1%	56,515	15,881	72,396	35,261
301310	Professor	Anchorage	FT		United Academics BU	28.1%	85,025	23,892	108,917	53,049
301311	Professor	Anchorage	FT		United Academics BU	28.1%	88,557	24,885	113,442	55,253
301312	Professor	Anchorage	FT		United Academics BU	28.1%	110,287	30,991	141,278	68,810
301314	Professor	Anchorage	FT		United Academics BU	28.1%	120,822	33,951	154,773	75,383
301315	Assistant Professor	Anchorage	FT		United Academics BU	28.1%	89,380	25,116	114,496	55,766
301316	Professor	Anchorage	FT		United Academics BU	28.1%	110,580	31,073	141,653	68,993
301318	Professor	Anchorage	FT		United Academics BU	28.1%	100		100	-
301319	Professor	Anchorage	FT		United Academics BU	28.1%	92,424	25,971	118,395	57,665
301320	Associate Professor	Anchorage	FT		United Academics BU	28.1%	100		100	-
301321	Associate Professor	Anchorage	FT		United Academics BU	28.1%	84,761	23,818	108,579	52,884
301322	Professor	Anchorage	FT		United Academics BU	28.1%	65,660	18,450	84,110	40,967
301323	Professor	Anchorage	FT		United Academics BU	28.1%	90,969	25,562	116,531	56,757
301325	Director (Academic-Faculty)	Anchorage	FT		Non-Represented Faculty	27.7%	167,291	46,340	213,631	104,050
301326	Assistant Professor	Anchorage	FT		United Academics BU	28.1%	67,670	19,015	86,685	42,221
301327	Admin Specialist 1 (Exempt)	Anchorage	FT		APT - Exempt Employees	39.5%	61,324	24,223	85,547	41,666
301329	Admin Generalist 4	Anchorage	FT		PERS - Classified	51.2%	45,540	23,316	68,856	33,537
301331	Admin Specialist 2	Anchorage	FT		PERS - Classified	51.2%	51,782	26,512	78,294	38,134
301332	Assistant Professor	Anchorage	FT		United Academics BU	28.1%	75,800	21,300	97,100	47,293
301333	Instructional Designer 3	Anchorage	FT		APT - Exempt Employees	39.5%	58,923	23,275	82,198	40,035
301334	Associate Professor	Anchorage	FT		United Academics BU	28.1%	88,956	24,997	113,953	55,501
301336	Admin Generalist 4	Anchorage	FT		PERS - Classified	51.2%	50,780	25,999	76,779	37,396
301337	Associate Professor	Anchorage	FT		United Academics BU	28.1%	138,120	38,812	176,932	86,176
301339	Administrative Management 2	Anchorage	FT		APT - Exempt Employees	39.5%	58,923	23,275	82,198	40,035
301340	Admin Generalist 4	Anchorage	FT		PERS - Classified	51.2%	45,539	23,316	68,855	33,536
301341	Professor	Anchorage	FT		United Academics BU	28.1%	93,009	26,136	119,145	58,030

Personal Services Expenditure Detail
University of Alaska

Component: Anchorage Campus (753)

RDU: University of Alaska Anchorage (235)

Notes:

1. If a position is split, an asterisk (*) will appear in the Split/Count column. If the split position is also counted in the component, two asterisks (**) will appear in the column.

2. "Pool" PCN refers to UA temporary positions, such as adjunct faculty; student employees; and other non-permanent staff. Multiple incumbents may share the same labor pool position number

PCN	Job Class Title	Location	Time Status	Split/ Count	Employee Class	Benefit Rate	Annual	Annual	Total	UGF
							Budgeted Salary	Benefits	Costs	Estimate
301342	Director (Academic-Faculty)	Anchorage	PT		Non-Represented Faculty	27.7%	74,897	20,746	95,643	6,149
301343	Assistant Professor	Anchorage	FT		United Academics BU	28.1%	63,630	17,880	81,510	39,700
301344	Environmental Health/Safety 2	Anchorage	FT		APT - Exempt Employees	39.5%	65,751	25,972	91,723	44,674
301345	Professor	Anchorage	FT		United Academics BU	28.1%	78,430	22,039	100,469	48,934
301346	Professor	Anchorage	FT		United Academics BU	28.1%	106,431	29,907	136,338	66,404
301348	Professor	Anchorage	FT		United Academics BU	28.1%	98,765	27,753	126,518	61,621
301349	Term Asst Professor	Anchorage	FT		Non-Represented Faculty	27.7%	100		100	-
301350	Associate Professor	Anchorage	FT		United Academics BU	28.1%	79,893	22,450	102,343	49,847
301351	Professor	Anchorage	FT		United Academics BU	28.1%	90,237	25,357	115,594	56,301
301352	Associate Professor	Anchorage	PT		United Academics BU	28.1%	61,560	17,298	78,858	38,409
301354	Fiscal Professional 1	Anchorage	FT		PERS - Classified	51.2%	51,782	26,512	78,294	38,134
301355	Associate Professor	Anchorage	FT		United Academics BU	28.1%	72,334	20,326	92,660	45,131
301357	Fiscal Professional 2	Anchorage	FT		APT - Exempt Employees	39.5%	64,457	25,461	89,918	43,795
301358	Professor	Anchorage	FT		United Academics BU	28.1%	96,138	27,015	123,153	59,982
301360	Professor	Anchorage	FT		United Academics BU	28.1%	105,383	29,613	134,996	65,751
301361	Professor	Anchorage	FT		United Academics BU	28.1%	71,919	20,209	92,128	44,872
301362	Professor	Anchorage	FT		United Academics BU	28.1%	90,292	25,372	115,664	56,335
301365	Assistant Professor	Anchorage	FT		United Academics BU	28.1%	89,355	25,109	114,464	55,750
301366	Student Svcs Professional 2	Anchorage	FT		PERS - Classified	51.2%	51,260	26,245	77,505	37,749
301368	Director (Academic-Faculty)	Anchorage	FT		Non-Represented Faculty	27.7%	84,355	23,366	107,721	52,466
301369	Admin Specialist 2	Anchorage	FT		PERS - Classified	51.2%	61,325	31,398	92,723	45,162
301370	Administrative Professional 2	Anchorage	FT		APT - Exempt Employees	39.5%	81,014	32,001	113,015	55,045
301371	Professor	Anchorage	FT		United Academics BU	28.1%	87,611	24,619	112,230	54,662
301372	Assistant Professor	Anchorage	FT		United Academics BU	28.1%	72,493	20,371	92,864	45,230
301373	Associate Professor	Anchorage	FT		United Academics BU	28.1%	103,228	29,007	132,235	64,406
301374	Professor	Anchorage	FT		United Academics BU	28.1%	100,293	28,182	128,475	62,575
301375	Development 4	Anchorage	FT		APT - Exempt Employees	39.5%	89,512	35,357	124,869	60,818
301376	Associate Professor	Anchorage	FT		United Academics BU	28.1%	75,648	21,257	96,905	47,198
301379	Associate Professor	Anchorage	FT		United Academics BU	28.1%	71,928	20,212	92,140	44,877
301380	Communications Specialist 2	Anchorage	FT		PERS - Classified	51.2%	46,416	23,765	70,181	34,182
301381	IS Net Technician 7	Anchorage	FT		PERS - Classified	51.2%	58,339	29,870	88,209	42,963
301382	Student Svcs Professional 3	Anchorage	FT		APT - Exempt Employees	39.5%	48,717	19,243	67,960	33,101
301383	Professor	Anchorage	FT		United Academics BU	28.1%	60,600	17,029	77,629	37,810
301384	Assistant Professor	Anchorage	FT		United Academics BU	28.1%	83,170	23,371	106,541	51,891
301385	Term Asst Professor	Anchorage	FT		United Academics BU	28.1%	66,628	18,722	85,350	41,571
301386	Associate Professor	Anchorage	FT		United Academics BU	28.1%	81,600	22,930	104,530	50,912

Personal Services Expenditure Detail
University of Alaska

Component: Anchorage Campus (753)

RDU: University of Alaska Anchorage (235)

Notes:

1. If a position is split, an asterisk (*) will appear in the Split/Count column. If the split position is also counted in the component, two asterisks (**) will appear in the column.
2. "Pool" PCN refers to UA temporary positions, such as adjunct faculty; student employees; and other non-permanent staff. Multiple incumbents may share the same labor pool position number

PCN	Job Class Title	Location	Time Status	Split/ Count	Employee Class	Benefit Rate	Annual	Annual	Total	UGF
							Budgeted Salary	Benefits	Costs	Estimate
301387	Admin Specialist 4	Anchorage	FT		APT - Exempt Employees	39.5%	92,248	36,438	128,686	62,677
301388	Assistant Professor	Anchorage	FT		United Academics BU	28.1%	66,364	18,648	85,012	41,406
301392	Assistant Professor	Anchorage	FT		United Academics BU	28.1%	69,547	19,543	89,090	43,392
301393	Assistant Professor	Anchorage	PT		United Academics BU	28.1%	47,761	13,421	61,182	29,799
301394	Assistant Professor	Anchorage	FT		United Academics BU	28.1%	121,200	34,057	155,257	75,619
301395	Professor	Anchorage	FT		United Academics BU	28.1%	158,594	44,565	203,159	98,950
301396	Assistant Professor	Anchorage	FT		United Academics BU	28.1%	125,000	35,125	160,125	77,990
301397	Director (Academic-Faculty)	Anchorage	FT		Non-Represented Faculty	27.7%	100		100	-
301398	Assistant Professor	Anchorage	FT		United Academics BU	28.1%	100		100	-
301399	Term Asst Professor	Anchorage	FT		United Academics BU	28.1%	66,217	18,607	84,824	41,314
301400	Professor	Anchorage	FT		United Academics BU	28.1%	115,428	32,435	147,863	72,018
301403	Professor	Anchorage	FT		United Academics BU	28.1%	149,876	42,115	191,991	93,511
301405	Fac Svcs-MO&U Supervsr 3 (NE)	Anchorage	FT		PERS - Classified	51.2%	57,796	29,592	87,388	42,563
301407	Professor	Anchorage	FT		United Academics BU	28.1%	100		100	-
301409	Professor	Anchorage	FT		United Academics BU	28.1%	73,172	20,561	93,733	45,653
301410	Director (Academic-Faculty)	Anchorage	FT		Non-Represented Faculty	27.7%	123,926	34,328	158,254	77,078
301411	Professor	Anchorage	FT		United Academics BU	28.1%	65,829	18,498	84,327	41,072
301412	Administrative Management 1	Anchorage	FT		APT - Exempt Employees	39.5%	67,046	26,483	93,529	45,554
301413	Research Technician 4	Anchorage	FT		PERS - Classified	51.2%	52,346	26,801	79,147	38,549
301414	Assistant Professor	Anchorage	FT		United Academics BU	28.1%	108,000	30,348	138,348	67,383
301415	Professor	Anchorage	FT		United Academics BU	28.1%	95,833	26,929	122,762	-
301417	Associate Professor	Anchorage	FT		United Academics BU	28.1%	91,252	25,642	116,894	56,934
301418	Term Asst Professor	Anchorage	FT		United Academics BU	28.1%	71,774	20,168	91,942	44,781
301419	Instructor	Anchorage	FT		United Academics BU	28.1%	62,518	17,568	80,086	39,006
301420	Assistant Professor	Anchorage	FT		United Academics BU	28.1%	58,532	16,447	74,979	36,519
301421	Student Svcs Professional 2	Anchorage	FT		PERS - Classified	51.2%	55,522	28,427	83,949	40,888
301422	Professor	Anchorage	FT		United Academics BU	28.1%	98,160	27,583	125,743	61,244
301423	Associate Professor	Anchorage	FT		United Academics BU	28.1%	73,498	20,653	94,151	45,857
301424	Professor	Anchorage	FT		United Academics BU	28.1%	66,365	18,649	85,014	41,406
301425	Assistant Professor	Anchorage	FT		United Academics BU	28.1%	69,690	19,583	89,273	43,481
301426	Research Technician 3	Anchorage	FT		PERS - Classified	51.2%	30,171	15,448	45,619	22,219
301427	Instructor	Anchorage	FT		United Academics BU	28.1%	70,700	19,867	90,567	44,111
301428	Student Svcs Professional 2	Anchorage	FT		PERS - Classified	51.2%	51,782	26,512	78,294	38,134
301429	Research Technician 2	Anchorage	FT		PERS - Classified	51.2%	40,382	20,676	61,058	29,739
301430	Associate Professor	Anchorage	FT		United Academics BU	28.1%	91,156	25,615	116,771	56,874
301432	Professor	Anchorage	FT		United Academics BU	28.1%	95,803	26,921	122,724	59,773

Personal Services Expenditure Detail
University of Alaska

Component: Anchorage Campus (753)

RDU: University of Alaska Anchorage (235)

Notes:

1. If a position is split, an asterisk (*) will appear in the Split/Count column. If the split position is also counted in the component, two asterisks (**) will appear in the column.

2. "Pool" PCN refers to UA temporary positions, such as adjunct faculty; student employees; and other non-permanent staff. Multiple incumbents may share the same labor pool position number

PCN	Job Class Title	Location	Time Status	Split/ Count	Employee Class	Benefit Rate	Annual	Annual	Total	UGF
							Budgeted Salary	Benefits	Costs	Estimate
301434	Fiscal Professional 1	Anchorage	FT		PERS - Classified	51.2%	46,416	23,765	70,181	34,182
301435	Student Svcs Professional 2	Anchorage	FT		APT - Exempt Employees	39.5%	51,260	20,248	71,508	34,828
301436	Admin Specialist 3	Anchorage	FT		APT - Exempt Employees	39.5%	65,751	25,972	91,723	44,674
301437	Assistant Professor	Anchorage	FT		United Academics BU	28.1%	80,000	22,480	102,480	49,914
301438	Professor	Anchorage	FT		United Academics BU	28.1%	143,092	40,209	183,301	89,278
301439	Associate Professor	Anchorage	FT		United Academics BU	28.1%	86,074	24,187	110,261	53,703
301441	Professor	Anchorage	FT		United Academics BU	28.1%	114,848	32,272	147,120	71,656
301442	Professor	Anchorage	FT		United Academics BU	28.1%	67,038	18,838	85,876	41,826
301444	Student Svcs Professional 2	Anchorage	FT		PERS - Classified	51.2%	51,782	26,512	78,294	38,134
301445	Associate Professor	Anchorage	FT		United Academics BU	28.1%	76,342	21,452	97,794	47,631
301446	Associate Professor	Anchorage	FT		United Academics BU	28.1%	74,504	20,936	95,440	46,485
301447	Fiscal Technician 3	Anchorage	FT		PERS - Classified	51.2%	48,337	24,749	73,086	35,597
301448	Associate Professor	Anchorage	FT		United Academics BU	28.1%	71,165	19,997	91,162	44,401
301449	Assistant Professor	Anchorage	FT		United Academics BU	28.1%	79,257	22,271	101,528	49,450
301450	Administrative Management 4	Anchorage	FT		APT - Exempt Employees	39.5%	81,828	32,322	114,150	55,598
301451	Research Technician 3	Anchorage	FT		PERS - Classified	51.2%	45,540	23,316	68,856	33,537
301452	Admin Generalist 3	Anchorage	FT		PERS - Classified	51.2%	33,134	16,965	50,099	24,401
301453	Professor	Anchorage	FT		United Academics BU	28.1%	90,792	25,513	116,305	56,647
301454	Assistant Professor	Anchorage	FT		United Academics BU	28.1%	77,806	21,863	99,669	48,545
301455	Director (Academic-Faculty)	Anchorage	FT		Non-Represented Faculty	27.7%	156,138	43,250	199,388	97,113
301456	Assistant Professor	Anchorage	FT		United Academics BU	28.1%	64,345	18,081	82,426	40,146
301457	Term Asst Professor	Anchorage	FT		United Academics BU	28.1%	100		100	-
301458	Professor	Anchorage	FT		United Academics BU	28.1%	97,430	27,378	124,808	60,789
301459	Assistant Professor	Anchorage	FT		United Academics BU	28.1%	143,000	40,183	183,183	89,221
301461	Fac Svcs-MO&U Supervsr 3 (NE)	Anchorage	FT		PERS - Classified	51.2%	58,923	30,169	89,092	43,393
301462	Assistant Professor	Anchorage	FT		United Academics BU	28.1%	58,463	16,428	74,891	36,476
301463	Admin Generalist 4	Anchorage	FT		PERS - Classified	51.2%	45,539	23,316	68,855	33,536
301464	Assistant Professor	Anchorage	FT		United Academics BU	28.1%	80,951	22,747	103,698	50,507
301465	Training & Development 4	Anchorage	FT		APT - Exempt Employees	39.5%	61,930	24,462	86,392	42,078
301466	Professor	Anchorage	FT		United Academics BU	28.1%	101,966	28,652	130,618	63,619
301467	Assistant Professor	Anchorage	FT		United Academics BU	28.1%	76,760	21,570	98,330	47,892
301468	Director (Academic-Faculty)	Anchorage	FT		Non-Represented Faculty	27.7%	184,020	50,974	234,994	114,455
301469	Assistant Professor	Anchorage	FT		United Academics BU	28.1%	100		100	-
301470	Fiscal Professional 4	Anchorage	FT		APT - Exempt Employees	39.5%	67,046	26,483	93,529	-
301472	Fiscal Professional 3	Anchorage	FT		APT - Exempt Employees	39.5%	78,634	31,060	109,694	53,427
301473	Instructional Designer 3	Anchorage	FT		APT - Exempt Employees	39.5%	52,030	20,552	72,582	35,352

Personal Services Expenditure Detail
University of Alaska

Component: Anchorage Campus (753)

RDU: University of Alaska Anchorage (235)

Notes:

1. If a position is split, an asterisk (*) will appear in the Split/Count column. If the split position is also counted in the component, two asterisks (**) will appear in the column.

2. "Pool" PCN refers to UA temporary positions, such as adjunct faculty; student employees; and other non-permanent staff. Multiple incumbents may share the same labor pool position number

PCN	Job Class Title	Location	Time Status	Split/ Count	Employee Class	Benefit Rate	Annual	Annual	Total	UGF
							Budgeted Salary	Benefits	Costs	Estimate
301476	Assistant Professor	Anchorage	FT		United Academics BU	28.1%	76,387	21,465	97,852	47,659
301477	Associate Professor	Anchorage	FT		United Academics BU	28.1%	82,933	23,304	106,237	51,744
301479	Instructor	Anchorage	FT		United Academics BU	28.1%	59,951	16,846	76,797	37,405
301480	Admin Specialist 3	Anchorage	FT		APT - Exempt Employees	39.5%	54,455	21,510	75,965	36,999
301481	Admin Specialist 3	Anchorage	FT		APT - Exempt Employees	39.5%	57,796	22,829	80,625	39,269
301482	Term Asst Professor	Anchorage	FT		United Academics BU	28.1%	79,065	22,217	101,282	49,330
301484	Professor	Anchorage	FT		United Academics BU	28.1%	129,854	36,489	166,343	81,019
301485	Professor	Anchorage	FT		United Academics BU	28.1%	108,072	30,368	138,440	67,428
301486	Administrative Management 5	Anchorage	FT		APT - Exempt Employees	39.5%	153,237	60,529	213,766	104,116
301488	Assistant Professor	Anchorage	FT		United Academics BU	28.1%	76,229	21,420	97,649	47,561
301490	Student Svcs Professional 2	Anchorage	FT		PERS - Classified	51.2%	58,924	30,169	89,093	43,393
301492	Associate Professor	Anchorage	FT		United Academics BU	28.1%	100		100	-
301494	Professor	Anchorage	FT		United Academics BU	28.1%	163,620	45,977	209,597	102,086
301496	Associate Professor	Anchorage	FT		United Academics BU	28.1%	100		100	-
301498	Associate Professor	Anchorage	FT		United Academics BU	28.1%	94,154	26,457	120,611	58,745
301500	Assistant Professor	Anchorage	FT		United Academics BU	28.1%	90,900	25,543	116,443	56,714
301502	Administrative Professional 4	Anchorage	FT		APT - Exempt Employees	39.5%	84,313	33,304	117,617	57,286
301505	Assistant Professor	Anchorage	FT		United Academics BU	28.1%	100		100	-
301506	Assistant Professor	Anchorage	FT		United Academics BU	28.1%	75,175	21,124	96,299	46,903
301507	Student Svcs Professional 2	Anchorage	FT		PERS - Classified	51.2%	57,190	29,281	86,471	42,116
301509	Associate Professor	Anchorage	FT		United Academics BU	28.1%	84,768	23,820	108,588	52,888
301510	Administrative Management 2	Anchorage	FT		APT - Exempt Employees	39.5%	68,403	27,019	95,422	46,476
301512	Athletics Coach 2	Anchorage	FT		APT - Exempt Employees	39.5%	58,256	23,011	81,267	39,582
301514	Student Svcs Professional 2	Anchorage	PT		PERS - Classified	51.2%	51,260	26,245	77,505	37,749
301516	Student Svcs Professional 2	Anchorage	FT		PERS - Classified	51.2%	58,381	29,891	88,272	42,994
301517	Research Professional 3	Anchorage	FT		APT - Exempt Employees	39.5%	71,890	28,397	100,287	48,845
301521	Administrative Professional 1	Anchorage	FT		APT - Exempt Employees	39.5%	51,083	20,178	71,261	34,708
301522	Associate Professor	Anchorage	FT		United Academics BU	28.1%	86,607	24,337	110,944	54,036
301523	Assistant Professor	Anchorage	FT		United Academics BU	28.1%	106,199	29,842	136,041	66,260
301524	Associate Vice Chancellor	Anchorage	FT		Officer	27.7%	156,138	43,250	199,388	97,113
301536	Professor	Anchorage	FT		United Academics BU	28.1%	87,703	24,645	112,348	54,720
301538	Communications Specialist 5	Anchorage	FT		APT - Exempt Employees	39.5%	63,163	24,949	88,112	42,916
301544	Communications Specialist 2	Anchorage	FT		PERS - Classified	51.2%	49,778	25,486	75,264	36,658
301554	Admin Specialist 2	Anchorage	FT		PERS - Classified	51.2%	61,930	31,708	93,638	45,607
301556	Associate Dean/Faculty	Anchorage	FT		Non-Represented Faculty	27.7%	204,434	56,628	261,062	127,152
301560	Professor	Anchorage	FT		United Academics BU	28.1%	96,638	27,155	123,793	60,294

Personal Services Expenditure Detail
University of Alaska

Component: Anchorage Campus (753)

RDU: University of Alaska Anchorage (235)

Notes:

1. If a position is split, an asterisk (*) will appear in the Split/Count column. If the split position is also counted in the component, two asterisks (**) will appear in the column.

2. "Pool" PCN refers to UA temporary positions, such as adjunct faculty; student employees; and other non-permanent staff. Multiple incumbents may share the same labor pool position number

PCN	Job Class Title	Location	Time Status	Split/ Count	Employee Class	Benefit Rate	Annual	Annual	Total	UGF
							Budgeted Salary	Benefits	Costs	Estimate
301566	Director (Academic-Faculty)	Anchorage	PT		Non-Represented Faculty	27.7%	95,286	26,394	121,680	59,265
301574	Associate Professor	Anchorage	FT		United Academics BU	28.1%	135,952	38,203	174,155	84,823
301576	Professor	Anchorage	FT		United Academics BU	28.1%	100		100	-
301578	Assistant Professor	Anchorage	FT		United Academics BU	28.1%	68,970	19,381	88,351	43,032
301580	Assistant Professor	Anchorage	FT		United Academics BU	28.1%	66,255	18,618	84,873	41,338
301586	Assistant Professor	Anchorage	FT		United Academics BU	28.1%	70,700	19,867	90,567	44,111
301588	Student Svcs Professional 4	Anchorage	FT		APT - Exempt Employees	39.5%	82,664	32,652	115,316	56,166
301592	IS Net Technician 7	Anchorage	FT		PERS - Classified	51.2%	57,191	29,282	86,473	42,117
301594	Training & Development 2	Anchorage	FT		PERS - Classified	51.2%	39,125	20,032	59,157	28,813
301596	Assistant Professor	Anchorage	FT		United Academics BU	28.1%	78,000	21,918	99,918	48,666
301598	Assistant Professor	Anchorage	FT		United Academics BU	28.1%	85,500	24,026	109,526	53,345
301604	Assistant Professor	Anchorage	FT		United Academics BU	28.1%	86,003	24,167	110,170	53,659
301606	Associate Dean/Faculty	Anchorage	FT		Non-Represented Faculty	27.7%	119,140	33,002	152,142	74,102
301610	Term Asst Professor	Anchorage	FT		United Academics BU	28.1%	70,700	19,867	90,567	44,111
301612	Associate Professor	Anchorage	FT		United Academics BU	28.1%	99,990	28,097	128,087	62,386
301616	Associate Director/Faculty	Anchorage	FT		Non-Represented Faculty	27.7%	140,542	38,930	179,472	87,413
301618	Professor	Anchorage	FT		United Academics BU	28.1%	104,769	29,440	134,209	65,367
301620	Associate Professor	Anchorage	FT		United Academics BU	28.1%	84,057	23,620	107,677	52,445
301624	Assistant Professor	Anchorage	FT		United Academics BU	28.1%	82,000	23,042	105,042	51,161
301626	Associate Professor	Anchorage	FT		United Academics BU	28.1%	112,303	31,557	143,860	59,600
301628	Assistant Professor	Anchorage	FT		United Academics BU	28.1%	101,295	28,464	129,759	63,200
301630	Assistant Professor	Anchorage	FT		United Academics BU	28.1%	72,000	20,232	92,232	44,922
301632	Assistant Professor	Anchorage	FT		United Academics BU	28.1%	39,000	10,959	49,959	24,333
301634	Assistant Professor	Anchorage	FT		United Academics BU	28.1%	82,555	23,198	105,753	51,508
301636	Assistant Professor	Anchorage	FT		United Academics BU	28.1%	72,720	20,434	93,154	45,371
301638	Assistant Professor	Anchorage	FT		United Academics BU	28.1%	75,129	21,111	96,240	27,658
301640	Assistant Professor	Anchorage	FT		United Academics BU	28.1%	69,004	19,390	88,394	43,053
301642	Associate Professor	Anchorage	FT		United Academics BU	28.1%	90,437	25,413	115,850	56,425
301644	Student Svcs Technician 2	Anchorage	FT		PERS - Classified	51.2%	42,867	21,948	64,815	31,569
301646	Instructor	Anchorage	FT		United Academics BU	28.1%	62,000	17,422	79,422	38,683
301648	Admin Generalist 3	Anchorage	FT		PERS - Classified	51.2%	40,381	20,675	61,056	29,738
301650	Physical Health Provider 2	Anchorage	FT		PERS - Classified	51.2%	43,208	22,122	65,330	31,820
301652	Assistant Professor	Anchorage	FT		United Academics BU	28.1%	70,700	19,867	90,567	44,111
301654	Associate Professor	Anchorage	FT		United Academics BU	28.1%	81,676	22,951	104,627	50,959
301656	Admin Generalist 4	Anchorage	FT		PERS - Classified	51.2%	47,857	24,503	72,360	35,243
301658	Professor	Anchorage	FT		United Academics BU	28.1%	101,913	28,638	130,551	63,586

Personal Services Expenditure Detail
University of Alaska

Component: Anchorage Campus (753)

RDU: University of Alaska Anchorage (235)

Notes:

1. If a position is split, an asterisk (*) will appear in the Split/Count column. If the split position is also counted in the component, two asterisks (**) will appear in the column.

2. "Pool" PCN refers to UA temporary positions, such as adjunct faculty; student employees; and other non-permanent staff. Multiple incumbents may share the same labor pool position number

PCN	Job Class Title	Location	Time Status	Split/ Count	Employee Class	Benefit Rate	Annual	Annual	Total	UGF
							Budgeted Salary	Benefits	Costs	Estimate
301660	Assistant Professor	Anchorage	FT		United Academics BU	28.1%	62,993	17,701	80,694	39,303
301662	Assistant Professor	Anchorage	FT		United Academics BU	28.1%	75,750	21,286	97,036	47,262
301664	Professor	Anchorage	FT		United Academics BU	28.1%	90,991	25,568	116,559	56,771
301668	Administrative Professional 1	Anchorage	FT		APT - Exempt Employees	39.5%	61,930	24,462	86,392	42,078
301670	Assistant Professor	Anchorage	PT		United Academics BU	28.1%	38,000	10,678	48,678	23,709
301674	Instructional Designer 3	Anchorage	FT		APT - Exempt Employees	39.5%	77,903	30,772	108,675	52,931
301676	Director (Academic-Faculty)	Anchorage	FT		Non-Represented Faculty	27.7%	100		100	-
301678	Assistant Professor	Anchorage	FT		United Academics BU	28.1%	79,659	22,384	102,043	49,701
301682	Assistant Professor	Anchorage	FT		United Academics BU	28.1%	67,670	19,015	86,685	42,221
301684	Director (Academic-Faculty)	Anchorage	FT		Non-Represented Faculty	27.7%	207,846	57,573	265,419	129,274
301686	Professor	Anchorage	FT		United Academics BU	28.1%	114,032	32,043	146,075	71,147
301688	Assistant Professor	Anchorage	FT		United Academics BU	28.1%	90,900	25,543	116,443	56,714
301690	Administrative Professional 2	Anchorage	FT		APT - Exempt Employees	39.5%	89,513	35,358	124,871	60,819
301692	Associate Professor	Anchorage	FT		United Academics BU	28.1%	155,749	43,765	199,514	97,175
301694	Professor	Anchorage	FT		United Academics BU	28.1%	98,230	27,603	125,833	61,288
301696	Associate Professor	Anchorage	FT		United Academics BU	28.1%	100,377	28,206	128,583	62,627
301697	Professor	Anchorage	FT		United Academics BU	28.1%	131,061	36,828	167,889	81,772
301698	Assistant Professor	Anchorage	FT		United Academics BU	28.1%	90,900	25,543	116,443	56,714
301701	Assistant Professor	Anchorage	FT		United Academics BU	28.1%	74,696	20,990	95,686	46,604
301702	Admin Generalist 3	Anchorage	FT		PERS - Classified	51.2%	41,217	21,103	62,320	30,353
301703	Admin Generalist 4	Anchorage	FT		PERS - Classified	51.2%	60,155	30,799	90,954	44,300
301705	Associate Professor	Anchorage	FT		United Academics BU	28.1%	87,277	24,525	111,802	54,454
301706	Professor	Anchorage	FT		United Academics BU	28.1%	119,362	33,541	152,903	74,472
301707	IS Consultant 2A	Anchorage	FT		PERS - Classified	51.2%	51,782	26,512	78,294	38,134
301708	Assistant Professor	Anchorage	FT		United Academics BU	28.1%	70,700	19,867	90,567	44,111
301709	Assistant Professor	Anchorage	FT		United Academics BU	28.1%	84,727	23,808	108,535	52,863
301710	Fiscal Professional 1	Anchorage	FT		PERS - Classified	51.2%	49,778	25,486	75,264	36,658
301711	Assistant Professor	Anchorage	FT		United Academics BU	28.1%	78,275	21,995	100,270	48,837
301713	Term Asst Professor	Anchorage	PT		United Academics BU	28.1%	41,018	11,526	52,544	25,592
301714	Professor	Anchorage	FT		United Academics BU	28.1%	130,538	36,681	167,219	81,445
301717	IS Professional 3A	Anchorage	FT		PERS - Classified	51.2%	65,751	33,665	99,416	48,421
301718	Assistant Professor	Anchorage	FT		United Academics BU	28.1%	73,837	20,748	94,585	46,068
301719	Assistant Professor	Anchorage	FT		United Academics BU	28.1%	64,291	18,066	82,357	40,112
301720	Professor	Anchorage	FT		United Academics BU	28.1%	92,330	25,945	118,275	57,607
301721	Professor	Anchorage	FT		United Academics BU	28.1%	105,347	29,603	134,950	32,864
301722	Dean (Academic)	Anchorage	FT		Sr. Administrator	27.7%	100		100	-

Personal Services Expenditure Detail
University of Alaska

Component: Anchorage Campus (753)

RDU: University of Alaska Anchorage (235)

Notes:

1. If a position is split, an asterisk (*) will appear in the Split/Count column. If the split position is also counted in the component, two asterisks (**) will appear in the column.

2. "Pool" PCN refers to UA temporary positions, such as adjunct faculty; student employees; and other non-permanent staff. Multiple incumbents may share the same labor pool position number

PCN	Job Class Title	Location	Time Status	Split/ Count	Employee Class	Benefit Rate	Annual	Annual	Total	UGF
							Budgeted Salary	Benefits	Costs	Estimate
301723	Associate Professor	Anchorage	FT		United Academics BU	28.1%	109,080	30,651	139,731	68,057
301724	Assistant Professor	Anchorage	FT		United Academics BU	28.1%	57,000	16,017	73,017	35,563
301725	Research Professional 2	Anchorage	FT		APT - Exempt Employees	39.5%	65,105	25,716	90,821	44,235
301727	Admin Specialist 4	Anchorage	PT		APT - Exempt Employees	39.5%	14,449	5,707	20,156	-
301729	Instructor	Anchorage	FT		United Academics BU	28.1%	52,264	14,686	66,950	32,609
301730	Student Svcs Professional 2	Anchorage	FT		PERS - Classified	51.2%	51,782	26,512	78,294	38,134
301731	Term Instructor	Anchorage	FT		United Academics BU	28.1%	77,047	21,650	98,697	48,071
301732	Communications Specialist 4	Anchorage	FT		APT - Exempt Employees	39.5%	54,455	21,510	75,965	36,999
301733	Associate Professor	Anchorage	FT		United Academics BU	28.1%	81,207	22,819	104,026	50,667
301734	Development 4	Anchorage	FT		APT - Exempt Employees	39.5%	70,470	27,836	98,306	47,880
301735	Term Instructor	Anchorage	PT		United Academics BU	28.1%	41,276	11,599	52,875	25,753
301736	Admin Specialist 3	Anchorage	FT		APT - Exempt Employees	39.5%	54,456	21,510	75,966	16,650
301738	Admin Specialist 1	Anchorage	FT		PERS - Classified	51.2%	58,923	30,169	89,092	43,393
301740	Administrative Professional 1	Anchorage	FT		APT - Exempt Employees	39.5%	54,455	21,510	75,965	36,999
301744	Development 4	Anchorage	FT		APT - Exempt Employees	39.5%	95,985	37,914	133,899	65,217
301746	Administrative Professional 4	Anchorage	FT		APT - Exempt Employees	39.5%	96,925	38,285	135,210	65,855
301748	Fiscal Manager 4	Anchorage	FT		APT - Exempt Employees	39.5%	140,084	55,333	195,417	95,179
301750	Director (Academic-Faculty)	Anchorage	FT		Non-Represented Faculty	27.7%	106,823	29,590	136,413	27,905
301751	IS Consultant 2A	Anchorage	FT		PERS - Classified	51.2%	49,778	25,486	75,264	36,658
301752	Instructor	Anchorage	FT		United Academics BU	28.1%	60,355	16,960	77,315	37,657
301753	Admin Specialist 4	Anchorage	FT		APT - Exempt Employees	39.5%	100		100	-
301756	Assistant Professor	Anchorage	FT		United Academics BU	28.1%	29,996	8,429	38,425	18,715
301757	Proc/ Cont Svcs Professional 2	Anchorage	FT		APT - Exempt Employees	39.5%	77,089	30,450	107,539	52,378
301758	Professor	Anchorage	FT		United Academics BU	28.1%	82,036	23,052	105,088	51,184
301759	Administrative Management 3	Anchorage	FT		APT - Exempt Employees	39.5%	95,985	37,914	133,899	65,217
301760	Professor	Anchorage	FT		United Academics BU	28.1%	84,558	23,761	108,319	52,757
301761	Training & Development 2	Anchorage	FT		PERS - Classified	51.2%	48,797	24,984	73,781	35,936
301762	IS Consultant 2A	Anchorage	FT		PERS - Classified	51.2%	57,796	29,592	87,388	42,563
301763	Training & Development 5	Anchorage	FT		APT - Exempt Employees	39.5%	70,471	27,836	98,307	47,881
301764	IS Consultant 2A	Anchorage	FT		PERS - Classified	51.2%	51,782	26,512	78,294	38,134
301766	Instructor	Anchorage	FT		United Academics BU	28.1%	52,926	14,872	67,798	33,022
301774	Instructor	Anchorage	FT		United Academics BU	28.1%	58,023	16,304	74,327	36,202
301776	Assistant Professor	Anchorage	FT		United Academics BU	28.1%	90,900	25,543	116,443	56,714
301778	Admin Specialist 1	Anchorage	FT		PERS - Classified	51.2%	50,279	25,743	76,022	37,027
302005	Admin Generalist 3	Anchorage	FT		PERS - Classified	51.2%	37,354	19,125	56,479	27,509
302030	Student Svcs Professional 2	Anchorage	FT		PERS - Classified	51.2%	49,778	25,486	75,264	36,658

Personal Services Expenditure Detail
University of Alaska

Component: Anchorage Campus (753)

RDU: University of Alaska Anchorage (235)

Notes:

1. If a position is split, an asterisk (*) will appear in the Split/Count column. If the split position is also counted in the component, two asterisks (**) will appear in the column.
2. "Pool" PCN refers to UA temporary positions, such as adjunct faculty; student employees; and other non-permanent staff. Multiple incumbents may share the same labor pool position number

PCN	Job Class Title	Location	Time Status	Split/ Count	Employee Class	Benefit Rate	Annual	Annual	Total	UGF
							Budgeted Salary	Benefits	Costs	Estimate
302125	Professor	Anchorage	FT		United Academics BU	28.1%	101,000	28,381	129,381	63,016
302140	Professor	Anchorage	FT		United Academics BU	28.1%	96,650	27,159	123,809	60,302
302165	Admin Specialist 3	Anchorage	FT		APT - Exempt Employees	39.5%	61,930	24,462	86,392	-
302190	Director (Admin)	Anchorage	FT		Sr. Administrator	27.7%	155,596	43,100	198,696	96,776
303002	Admin Generalist 4	Anchorage	PT		PERS - Classified	51.2%	28,595	14,641	43,236	21,058
303020	Admin Specialist 2	Anchorage	FT		PERS - Classified	51.2%	57,796	29,592	87,388	42,563
303025	Associate Dean/Faculty	Anchorage	FT		Non-Represented Faculty	27.7%	189,228	52,416	241,644	117,695
303045	Research Professional 2	Anchorage	FT		APT - Exempt Employees	39.5%	45,752	18,072	63,824	23,314
303052	Assistant Professor	Anchorage	FT		United Academics BU	28.1%	64,135	18,022	82,157	40,015
303075	Research Professional 5	Anchorage	FT		APT - Exempt Employees	39.5%	100		100	-
303080	Term Asst Professor	Anchorage	FT		United Academics BU	28.1%	64,440	18,108	82,548	17,869
303085	Term Asst Professor	Anchorage	FT		United Academics BU	28.1%	68,608	19,279	87,887	26,159
303091	Communications Specialist 5	Anchorage	FT		APT - Exempt Employees	39.5%	100		100	-
303101	IS Professional 3A	Anchorage	FT		APT - Exempt Employees	39.5%	100		100	-
303105	Research Professional 5	Anchorage	FT		APT - Exempt Employees	39.5%	100,893	39,853	140,746	68,551
303110	Fiscal Technician 3	Anchorage	FT		PERS - Classified	51.2%	100		100	-
303130	Associate Professor	Anchorage	FT		United Academics BU	28.1%	126,500	35,547	162,047	78,926
303135	Administrative Professional 3	Anchorage	FT		APT - Exempt Employees	39.5%	103,920	41,048	144,968	70,608
303145	Professor	Anchorage	FT		United Academics BU	28.1%	117,546	33,030	150,576	73,339
303165	Physical Health Provider 4	Anchorage	FT		APT - Exempt Employees	39.5%	83,744	33,079	116,823	-
303192	Fiscal Professional 1	Anchorage	FT		PERS - Classified	51.2%	56,668	29,014	85,682	41,732
303193	Director (Academic-Faculty)	Anchorage	FT		Non-Represented Faculty	27.7%	182,499	50,552	233,051	113,509
303210	Director (Academic-Faculty)	Anchorage	FT		Non-Represented Faculty	27.7%	164,756	45,637	210,393	102,474
303212	IS Manager 4	Anchorage	FT		APT - Exempt Employees	39.5%	153,238	60,529	213,767	104,117
303213	Admin Specialist 2	Anchorage	FT		PERS - Classified	51.2%	51,834	26,539	78,373	38,172
303215	Assistant Professor	Anchorage	FT		United Academics BU	28.1%	38,391	10,788	49,179	23,953
303222	Communications Specialist 2	Anchorage	FT		PERS - Classified	51.2%	49,778	25,486	75,264	36,658
303227	Associate Professor	Anchorage	FT		United Academics BU	28.1%	86,667	24,353	111,020	54,073
303228	Administrative Management 1	Anchorage	FT		APT - Exempt Employees	39.5%	71,201	28,124	99,325	48,377
303230	Director (Academic-Faculty)	Anchorage	FT		Non-Represented Faculty	27.7%	134,627	37,292	171,919	83,734
303231	Student Svcs Professional 3	Anchorage	FT		APT - Exempt Employees	39.5%	100		100	-
303232	Assistant Professor	Anchorage	FT		United Academics BU	28.1%	70,899	19,923	90,822	44,235
303234	Campus Services Generalist 3	Anchorage	PT		PERS - Classified	51.2%	13,798	7,065	20,863	10,161
303235	Administrative Management 1	Anchorage	FT		APT - Exempt Employees	39.5%	89,513	35,358	124,871	60,819
303241	Admin Specialist 3	Anchorage	FT		APT - Exempt Employees	39.5%	65,104	25,716	90,820	44,235
303242	Admin Specialist 4	Anchorage	FT		APT - Exempt Employees	39.5%	86,882	34,318	121,200	59,032

Personal Services Expenditure Detail
University of Alaska

Component: Anchorage Campus (753)

RDU: University of Alaska Anchorage (235)

Notes:

1. If a position is split, an asterisk (*) will appear in the Split/Count column. If the split position is also counted in the component, two asterisks (**) will appear in the column.

2. "Pool" PCN refers to UA temporary positions, such as adjunct faculty; student employees; and other non-permanent staff. Multiple incumbents may share the same labor pool position number

PCN	Job Class Title	Location	Time Status	Split/ Count	Employee Class	Benefit Rate	Annual	Annual	Total	UGF
							Budgeted Salary	Benefits	Costs	Estimate
303243	Instructional Designer 3	Anchorage	FT		APT - Exempt Employees	39.5%	59,529	23,514	83,043	40,447
303247	Admin Generalist 2	Anchorage	FT		PERS - Classified	51.2%	41,217	21,103	62,320	30,353
304005	Research Professional 1	Anchorage	FT		APT - Exempt Employees	39.5%	54,455	21,510	75,965	36,999
304030	Research Professional 3	Anchorage	FT		APT - Exempt Employees	39.5%	19,862	7,845	27,707	13,495
304036	Professor	Anchorage	FT		United Academics BU	28.1%	99,499	27,959	127,458	62,079
304045	Director (Academic-Faculty)	Anchorage	FT		Non-Represented Faculty	27.7%	100		100	-
304056	Research Professional 5	Anchorage	FT		APT - Exempt Employees	39.5%	95,024	37,534	132,558	32,282
304065	Associate Professor	Anchorage	FT		United Academics BU	28.1%	83,470	23,455	106,925	52,079
304072	Associate Professor	Anchorage	FT		United Academics BU	28.1%	75,528	21,223	96,751	47,123
304073	Associate Professor	Anchorage	FT		Non-Represented Faculty	27.7%	155,298	43,018	198,316	96,591
304075	Admin Generalist 3	Anchorage	FT		PERS - Classified	51.2%	34,985	17,912	52,897	25,764
304105	Student Svcs Professional 3	Anchorage	FT		APT - Exempt Employees	39.5%	60,155	23,761	83,916	40,872
304110	Admin Generalist 3	Anchorage	FT		PERS - Classified	51.2%	44,161	22,610	66,771	2,439
304120	Administrative Management 1	Anchorage	FT		APT - Exempt Employees	39.5%	58,923	23,275	82,198	40,035
304125	Environmental Health/Safety 3	Anchorage	FT		APT - Exempt Employees	39.5%	71,890	28,397	100,287	48,845
304130	Fiscal Technician 4	Anchorage	FT		PERS - Classified	51.2%	85,193	43,619	128,812	62,739
304135	Athletics Facs, Ops & Pgms 1	Anchorage	FT		PERS - Classified	51.2%	10,057	5,149	15,206	7,406
304160	Admin Specialist 2	Anchorage	FT		PERS - Classified	51.2%	76,316	39,074	115,390	56,201
304165	Fiscal Professional 2	Anchorage	FT		APT - Exempt Employees	39.5%	65,104	25,716	90,820	44,235
304170	Training & Development 4	Anchorage	FT		APT - Exempt Employees	39.5%	58,923	23,275	82,198	40,035
304171	Admin Specialist 3	Anchorage	FT		APT - Exempt Employees	39.5%	54,455	21,510	75,965	36,999
304172	Admin Generalist 3	Anchorage	FT		PERS - Classified	51.2%	35,154	17,999	53,153	25,888
304173	Coordinator (Nonexempt)	Anchorage	FT		PERS - Classified	51.2%	46,416	23,765	70,181	34,182
304752	Associate Professor	Anchorage	FT		United Academics BU	28.1%	81,592	22,927	104,519	50,907
305010	Professor	Anchorage	FT		United Academics BU	28.1%	122,144	34,322	156,466	76,208
305015	Library Technician 2	Anchorage	FT		PERS - Classified	51.2%	33,137	16,966	50,103	24,403
305025	Professor	Anchorage	FT		United Academics BU	28.1%	126,868	35,650	162,518	79,156
305040	Associate Professor	Anchorage	FT		United Academics BU	28.1%	93,640	26,313	119,953	58,424
305075	Associate Professor	Anchorage	FT		United Academics BU	28.1%	99,764	28,034	127,798	52,908
305085	Associate Professor	Anchorage	FT		United Academics BU	28.1%	85,167	23,932	109,099	53,137
305090	Library Technician 2	Anchorage	FT		PERS - Classified	51.2%	47,857	24,503	72,360	35,243
305100	Library Technician 3	Anchorage	FT		PERS - Classified	51.2%	41,217	21,103	62,320	30,353
305140	Professor	Anchorage	PT		United Academics BU	28.1%	80,278	22,558	102,836	50,087
305160	Library Technician 1	Anchorage	FT		PERS - Classified	51.2%	33,137	16,966	50,103	24,403
305165	Dean (Academic)	Anchorage	FT		Sr. Administrator	27.7%	187,920	52,054	239,974	116,881
305175	Student Svcs Professional 2	Anchorage	FT		PERS - Classified	51.2%	53,891	27,592	81,483	39,687

Personal Services Expenditure Detail
University of Alaska

Component: Anchorage Campus (753)

RDU: University of Alaska Anchorage (235)

Notes:

1. If a position is split, an asterisk (*) will appear in the Split/Count column. If the split position is also counted in the component, two asterisks (**) will appear in the column.

2. "Pool" PCN refers to UA temporary positions, such as adjunct faculty; student employees; and other non-permanent staff. Multiple incumbents may share the same labor pool position number

PCN	Job Class Title	Location	Time Status	Split/ Count	Employee Class	Benefit Rate	Annual	Annual	Total	UGF
							Budgeted Salary	Benefits	Costs	Estimate
305185	Dean (Academic)	Anchorage	FT		Sr. Administrator	27.7%	200,749	55,607	256,356	124,860
305215	Fiscal Professional 3	Anchorage	FT		APT - Exempt Employees	39.5%	74,061	29,254	103,315	50,320
305220	IS Manager 4	Anchorage	FT		APT - Exempt Employees	39.5%	123,090	48,621	171,711	83,633
305225	Associate Dean/Faculty	Anchorage	PT		Non-Represented Faculty	27.7%	169,354	46,911	216,265	105,333
305235	Director (Academic-Faculty)	Anchorage	FT		Non-Represented Faculty	27.7%	165,635	45,881	211,516	103,020
305240	Fiscal Manager 1	Anchorage	FT		APT - Exempt Employees	39.5%	98,888	39,061	137,949	67,189
305254	Administrative Management 4	Anchorage	FT		APT - Exempt Employees	39.5%	129,352	51,094	180,446	87,888
305258	Director (Academic-Faculty)	Anchorage	FT		Non-Represented Faculty	27.7%	272,996	75,620	348,616	169,796
305259	Associate Professor	Anchorage	FT		United Academics BU	28.1%	111,317	31,280	142,597	69,453
305266	Admin Specialist 4	Anchorage	FT		APT - Exempt Employees	39.5%	67,735	26,755	94,490	46,022
305268	Fiscal Technician 4	Anchorage	FT		PERS - Classified	51.2%	54,977	28,148	83,125	40,487
305269	Admin Specialist 4	Anchorage	FT		APT - Exempt Employees	39.5%	88,656	35,019	123,675	60,237
305272	Broadcast/Media Professional 3	Anchorage	PT		APT - Exempt Employees	39.5%	61,930	24,462	86,392	42,078
305273	Admin Generalist 4	Anchorage	FT		PERS - Classified	51.2%	57,190	29,281	86,471	42,116
305276	Provost	Anchorage	FT		Officer	27.7%	212,916	58,978	271,894	132,428
305278	Admin Specialist 4	Anchorage	FT		APT - Exempt Employees	39.5%	81,014	32,001	113,015	55,045
305279	Admin Generalist 4	Anchorage	FT		PERS - Classified	51.2%	100		100	-
305281	Associate Professor	Anchorage	FT		United Academics BU	28.1%	89,629	25,186	114,815	55,921
305283	Student Svcs Professional 3	Anchorage	FT		APT - Exempt Employees	39.5%	45,901	18,131	64,032	31,187
305286	IS Consultant 4A	Anchorage	FT		APT - Exempt Employees	39.5%	72,642	28,694	101,336	49,356
305287	Student Svcs Manager 1	Anchorage	FT		APT - Exempt Employees	39.5%	54,455	21,510	75,965	36,999
305288	Assistant Professor	Anchorage	FT		United Academics BU	28.1%	58,818	16,528	75,346	36,698
305289	IS Consultant 3A	Anchorage	FT		APT - Exempt Employees	39.5%	60,155	23,761	83,916	40,872
305291	Associate Dean/Faculty	Anchorage	FT		Non-Represented Faculty	27.7%	117,104	32,438	149,542	72,835
305292	Admin Specialist 3	Anchorage	FT		APT - Exempt Employees	39.5%	66,378	26,219	92,597	45,100
305296	IS Consultant 2A	Anchorage	FT		PERS - Classified	51.2%	51,782	26,512	78,294	38,134
305297	IS Professional 3A	Anchorage	FT		APT - Exempt Employees	39.5%	74,771	29,535	104,306	50,803
305298	IS Consultant 5A	Anchorage	FT		APT - Exempt Employees	39.5%	77,903	30,772	108,675	52,931
305307	Administrative Professional 3	Anchorage	FT		APT - Exempt Employees	39.5%	82,910	32,749	115,659	56,333
305309	Administrative Management 1	Anchorage	FT		APT - Exempt Employees	39.5%	67,046	26,483	93,529	45,554
305310	IS Manager 4	Anchorage	FT		APT - Exempt Employees	39.5%	137,348	54,252	191,600	93,320
305311	IS Professional 5A	Anchorage	FT		APT - Exempt Employees	39.5%	101,874	40,240	142,114	69,218
305318	Library Technician 3	Anchorage	FT		PERS - Classified	51.2%	41,217	21,103	62,320	30,353
305319	Comm Specialist 3 (E)	Anchorage	FT		APT - Exempt Employees	39.5%	51,782	20,454	72,236	35,183
305320	IS Professional 3A	Anchorage	FT		APT - Exempt Employees	39.5%	100,892	39,852	140,744	68,551
305322	Dean (Academic)	Anchorage	FT		Sr. Administrator	27.7%	141,683	39,246	180,929	88,123

Personal Services Expenditure Detail
University of Alaska

Component: Anchorage Campus (753)

RDU: University of Alaska Anchorage (235)

Notes:

1. If a position is split, an asterisk (*) will appear in the Split/Count column. If the split position is also counted in the component, two asterisks (**) will appear in the column.

2. "Pool" PCN refers to UA temporary positions, such as adjunct faculty; student employees; and other non-permanent staff. Multiple incumbents may share the same labor pool position number

PCN	Job Class Title	Location	Time Status	Split/ Count	Employee Class	Benefit Rate	Annual	Annual	Total	UGF
							Budgeted Salary	Benefits	Costs	Estimate
305324	Assistant Professor	Anchorage	FT		United Academics BU	28.1%	71,568	20,111	91,679	44,653
305331	Library Technician 1	Anchorage	FT		PERS - Classified	51.2%	33,137	16,966	50,103	24,403
305332	Library Technician 4	Anchorage	FT		PERS - Classified	51.2%	71,890	36,808	108,698	-
305334	Administrative Professional 4	Anchorage	FT		APT - Exempt Employees	39.5%	84,313	33,304	117,617	57,286
305505	Admin Specialist 2	Anchorage	FT		PERS - Classified	51.2%	51,784	26,513	78,297	38,135
305545	Assistant Professor	Anchorage	FT		United Academics BU	28.1%	70,224	19,733	89,957	43,814
305575	Admin Generalist 3	Anchorage	PT		PERS - Classified	51.2%	25,194	12,899	38,093	18,554
305690	IS Professional 5A	Anchorage	FT		APT - Exempt Employees	39.5%	100,892	39,852	140,744	68,551
305700	IS Net Technician 7	Anchorage	FT		PERS - Classified	51.2%	57,796	29,592	87,388	42,563
305709	Student Svcs Professional 2	Anchorage	FT		PERS - Classified	51.2%	54,455	27,881	82,336	40,102
305710	Associate Professor	Anchorage	FT		United Academics BU	28.1%	85,166	23,932	109,098	53,137
305712	Library Technician 4	Anchorage	FT		PERS - Classified	51.2%	52,346	26,801	79,147	38,549
305713	Assistant Professor	Anchorage	FT		United Academics BU	28.1%	81,605	22,931	104,536	50,915
305715	Professor	Anchorage	FT		United Academics BU	28.1%	126,049	35,420	161,469	78,645
305716	Fiscal Technician 2	Anchorage	FT		PERS - Classified	51.2%	48,337	24,749	73,086	35,597
305717	IS Consultant 3A	Anchorage	FT		APT - Exempt Employees	39.5%	57,190	22,590	79,780	38,857
305718	Director (Academic-Faculty)	Anchorage	FT		Non-Represented Faculty	27.7%	120,307	33,325	153,632	74,828
305720	Student Svcs Manager 2	Anchorage	FT		APT - Exempt Employees	39.5%	67,046	26,483	93,529	45,554
305721	Fiscal Manager 3	Anchorage	FT		APT - Exempt Employees	39.5%	100		100	-
305724	Associate Dean/Faculty	Anchorage	FT		Non-Represented Faculty	27.7%	100		100	-
305725	Admin Generalist 3	Anchorage	FT		PERS - Classified	51.2%	40,779	20,879	61,658	30,031
305726	Associate Professor	Anchorage	FT		United Academics BU	28.1%	104,345	29,321	133,666	65,103
305728	Director (Academic-Faculty)	Anchorage	FT		Non-Represented Faculty	27.7%	89,038	24,664	113,702	55,379
305730	Admin Specialist 3	Anchorage	FT		APT - Exempt Employees	39.5%	58,381	23,060	81,441	39,667
305731	Fiscal Manager 3	Anchorage	FT		APT - Exempt Employees	39.5%	100		100	-
305732	Professor	Anchorage	FT		Non-Represented Faculty	27.7%	174,608	48,366	222,974	108,601
305733	Student Svcs Manager 3	Anchorage	FT		APT - Exempt Employees	39.5%	100		100	-
305734	Research Technician 4	Anchorage	FT		PERS - Classified	51.2%	58,923	30,169	89,092	43,393
305735	Professor	Anchorage	FT		United Academics BU	28.1%	112,878	31,719	144,597	70,427
305736	Associate Professor	Anchorage	FT		United Academics BU	28.1%	85,166	23,932	109,098	53,137
305737	Associate Professor	Anchorage	FT		United Academics BU	28.1%	87,647	24,629	112,276	54,685
305738	Fiscal Manager 1	Anchorage	FT		APT - Exempt Employees	39.5%	82,664	32,652	115,316	56,166
305741	Professor	Anchorage	FT		United Academics BU	28.1%	130,079	36,552	166,631	64,927
305743	Associate Vice Chancellor	Anchorage	FT		Sr. Administrator	27.7%	191,776	53,122	244,898	119,279
305744	Admin Generalist 4	Anchorage	FT		PERS - Classified	51.2%	46,416	23,765	70,181	34,182
305745	IS Consultant 4A	Anchorage	FT		APT - Exempt Employees	39.5%	78,634	31,060	109,694	53,427

Personal Services Expenditure Detail
University of Alaska

Component: Anchorage Campus (753)
RDU: University of Alaska Anchorage (235)

Notes:

1. If a position is split, an asterisk (*) will appear in the Split/Count column. If the split position is also counted in the component, two asterisks (**) will appear in the column.
2. "Pool" PCN refers to UA temporary positions, such as adjunct faculty; student employees; and other non-permanent staff. Multiple incumbents may share the same labor pool position number

PCN	Job Class Title	Location	Time Status	Split/ Count	Employee Class	Benefit Rate	Annual	Annual	Total	UGF
							Budgeted Salary	Benefits	Costs	Estimate
305746	Instructional Designer 3	Anchorage	FT		APT - Exempt Employees	39.5%	51,782	20,454	72,236	35,183
305747	IS Professional 3A	Anchorage	FT		APT - Exempt Employees	39.5%	81,014	32,001	113,015	55,045
305752	Admin Specialist 3	Anchorage	FT		APT - Exempt Employees	39.5%	63,809	25,205	89,014	43,355
305753	Student Svcs Professional 2	Anchorage	FT		PERS - Classified	51.2%	52,806	27,037	79,843	38,888
305760	Professor	Anchorage	FT		United Academics BU	28.1%	111,339	31,286	142,625	69,467
305762	Student Svcs Professional 2	Anchorage	FT		PERS - Classified	51.2%	51,782	26,512	78,294	38,134
305763	Administrative Professional 1	Anchorage	FT		APT - Exempt Employees	39.5%	54,455	21,510	75,965	36,999
305764	Administrative Management 4	Anchorage	FT		APT - Exempt Employees	39.5%	130,668	51,614	182,282	88,782
305770	Research Professional 3	Anchorage	FT		APT - Exempt Employees	39.5%	100		100	-
305772	Term Asst Professor	Anchorage	FT		United Academics BU	28.1%	77,055	21,652	98,707	48,076
305773	Library Technician 1	Anchorage	FT		PERS - Classified	51.2%	33,137	16,966	50,103	24,403
305774	Library Technician 1	Anchorage	FT		PERS - Classified	51.2%	33,137	16,966	50,103	24,403
306040	Admin Generalist 2	Anchorage	FT		PERS - Classified	51.2%	100		100	-
306080	Administrative Management 5	Anchorage	FT		APT - Exempt Employees	39.5%	107,114	42,310	149,424	72,778
306085	Stu Svcs Profess 2 (Exempt)	Anchorage	FT		APT - Exempt Employees	39.5%	51,782	20,454	72,236	35,183
306100	Student Svcs Technician 3	Anchorage	PT		PERS - Classified	51.2%	23,438	12,000	35,438	17,260
306102	Student Svcs Technician 3	Anchorage	FT		PERS - Classified	51.2%	50,279	25,743	76,022	37,027
306103	Admin Specialist 2	Anchorage	FT		PERS - Classified	51.2%	100		100	-
306104	Associate Vice Chancellor	Anchorage	FT		Sr. Administrator	27.7%	110,423	30,587	141,010	-
306105	IS Net Technician 5	Anchorage	FT		PERS - Classified	51.2%	100		100	-
306106	Admin Specialist 1	Anchorage	FT		PERS - Classified	51.2%	46,876	24,001	70,877	34,521
306110	Stu Svcs Profess 3 (NonExempt)	Anchorage	PT		PERS - Classified	51.2%	21,488	11,002	32,490	15,824
306125	Student Svcs Technician 3	Anchorage	FT		PERS - Classified	51.2%	51,782	26,512	78,294	38,134
306130	Fiscal Manager 2	Anchorage	FT		APT - Exempt Employees	39.5%	70,470	27,836	98,306	47,880
306145	Student Svcs Technician 3	Anchorage	FT		PERS - Classified	51.2%	46,876	24,001	70,877	34,521
306165	Athletics Facs, Ops & Pgms 1	Anchorage	PT		PERS - Classified	51.2%	34,373	17,599	51,972	25,313
306170	Athletics Facs, Ops & Pgms 5	Anchorage	FT		APT - Exempt Employees	39.5%	70,470	27,836	98,306	47,880
306175	Athletics Facs Ops & Pgms 1	Anchorage	FT		PERS - Classified	51.2%	45,539	23,316	68,855	33,536
306180	Admin Specialist 3	Anchorage	FT		APT - Exempt Employees	39.5%	67,046	26,483	93,529	45,554
306181	Athletics Coach 2	Anchorage	FT		APT - Exempt Employees	39.5%	16,531	6,530	23,061	11,232
306182	Athletics Coach 2	Anchorage	FT		APT - Exempt Employees	39.5%	76,316	30,145	106,461	51,853
306183	Athletics Training 2	Anchorage	FT		APT - Exempt Employees	39.5%	43,648	17,241	60,889	29,656
306184	Athletics Coach 2	Anchorage	FT		APT - Exempt Employees	39.5%	53,146	20,993	74,139	36,110
306185	Athletics Coach 2	Anchorage	FT		APT - Exempt Employees	39.5%	61,324	24,223	85,547	41,666
306186	Athletics Coach 2	Anchorage	FT		APT - Exempt Employees	39.5%	43,180	17,056	60,236	29,338
306188	Athletics Coach 2	Anchorage	FT		APT - Exempt Employees	39.5%	60,740	23,992	84,732	41,269

Personal Services Expenditure Detail
University of Alaska

Component: Anchorage Campus (753)

RDU: University of Alaska Anchorage (235)

Notes:

1. If a position is split, an asterisk (*) will appear in the Split/Count column. If the split position is also counted in the component, two asterisks (**) will appear in the column.

2. "Pool" PCN refers to UA temporary positions, such as adjunct faculty; student employees; and other non-permanent staff. Multiple incumbents may share the same labor pool position number

PCN	Job Class Title	Location	Time Status	Split/ Count	Employee Class	Benefit Rate	Annual	Annual	Total	UGF
							Budgeted Salary	Benefits	Costs	Estimate
306190	Athletics Coach 2	Anchorage	FT		APT - Exempt Employees	39.5%	57,796	22,829	80,625	39,269
306191	Assistant Coach	Anchorage	FT		APT - Exempt Employees	39.5%	45,900	18,131	64,031	31,187
306192	Communications Specialist 2	Anchorage	FT		PERS - Classified	51.2%	57,190	29,281	86,471	42,116
306210	Administrative Management 3	Anchorage	FT		APT - Exempt Employees	39.5%	97,927	38,681	136,608	66,536
306225	Administrative Management 3	Anchorage	FT		APT - Exempt Employees	39.5%	100		100	-
306240	Athletics Facs, Ops & Pgms 3	Anchorage	FT		APT - Exempt Employees	39.5%	100		100	-
306245	Athletics Coach 3	Anchorage	FT		APT - Exempt Employees	39.5%	64,457	25,461	89,918	43,795
306250	Communications Specialist 4	Anchorage	FT		APT - Exempt Employees	39.5%	65,751	25,972	91,723	44,674
306270	Fiscal Technician 2	Anchorage	FT		PERS - Classified	51.2%	52,806	27,037	79,843	38,888
306275	Athletics Coach 3	Anchorage	FT		APT - Exempt Employees	39.5%	111,436	44,017	155,453	75,715
306280	Admin Generalist 3	Anchorage	FT		PERS - Classified	51.2%	41,217	21,103	62,320	30,353
306285	Student Svcs Manager 2	Anchorage	FT		APT - Exempt Employees	39.5%	100		100	-
306290	Athletics Coach 3	Anchorage	FT		APT - Exempt Employees	39.5%	90,410	35,712	126,122	61,429
306295	Athletics Coach 3	Anchorage	FT		APT - Exempt Employees	39.5%	72,640	28,693	101,333	49,355
306310	Student Svcs Manager 3	Anchorage	FT		APT - Exempt Employees	39.5%	101,874	40,240	142,114	69,218
306312	Admin Specialist 1	Anchorage	PT		PERS - Classified	51.2%	30,167	15,446	45,613	22,216
306313	Student Svcs Professional 4	Anchorage	FT		APT - Exempt Employees	39.5%	58,923	23,275	82,198	40,035
306316	Student Svcs Technician 3	Anchorage	FT		PERS - Classified	51.2%	47,356	24,246	71,602	34,874
306318	Student Svcs Professional 2	Anchorage	FT		PERS - Classified	51.2%	53,891	27,592	81,483	39,687
306320	Student Svcs Professional 3	Anchorage	FT		APT - Exempt Employees	39.5%	57,796	22,829	80,625	19,635
306321	Student Svcs Professional 2	Anchorage	FT		PERS - Classified	51.2%	49,778	25,486	75,264	36,658
306329	Student Svcs Manager 1	Anchorage	FT		APT - Exempt Employees	39.5%	57,796	22,829	80,625	39,269
306330	Student Svcs Professional 2	Anchorage	FT		PERS - Classified	51.2%	51,782	26,512	78,294	38,134
306331	Communications Specialist 3	Anchorage	FT		PERS - Classified	51.2%	49,778	25,486	75,264	36,658
306333	Student Svcs Professional 2	Anchorage	FT		PERS - Classified	51.2%	49,778	25,486	75,264	36,658
306335	Student Svcs Manager 3	Anchorage	FT		APT - Exempt Employees	39.5%	109,286	43,168	152,454	74,254
306338	Student Svcs Manager 2	Anchorage	FT		APT - Exempt Employees	39.5%	72,641	28,693	101,334	49,356
306340	Fiscal Manager 1	Anchorage	FT		APT - Exempt Employees	39.5%	63,809	25,205	89,014	43,355
306344	Student Svcs Technician 3	Anchorage	FT		PERS - Classified	51.2%	45,539	23,316	68,855	33,536
306348	Admin Specialist 2	Anchorage	FT		PERS - Classified	51.2%	52,806	27,037	79,843	38,888
306349	Admin Specialist 1	Anchorage	FT		PERS - Classified	51.2%	46,876	24,001	70,877	34,521
306350	Admin Specialist 2	Anchorage	FT		PERS - Classified	51.2%	49,778	25,486	75,264	36,658
306351	Student Svcs Technician 3	Anchorage	FT		PERS - Classified	51.2%	46,416	23,765	70,181	34,182
306352	Student Svcs Professional 4	Anchorage	FT		APT - Exempt Employees	39.5%	63,809	25,205	89,014	43,355
306353	IS Professional 2A	Anchorage	FT		PERS - Classified	51.2%	78,634	40,261	118,895	57,908
306355	Fiscal Professional 2	Anchorage	FT		APT - Exempt Employees	39.5%	62,577	24,718	87,295	42,518

Personal Services Expenditure Detail
University of Alaska

Component: Anchorage Campus (753)

RDU: University of Alaska Anchorage (235)

Notes:

1. If a position is split, an asterisk (*) will appear in the Split/Count column. If the split position is also counted in the component, two asterisks (**) will appear in the column.

2. "Pool" PCN refers to UA temporary positions, such as adjunct faculty; student employees; and other non-permanent staff. Multiple incumbents may share the same labor pool position number

PCN	Job Class Title	Location	Time Status	Split/ Count	Employee Class	Benefit Rate	Annual	Annual	Total	UGF
							Budgeted Salary	Benefits	Costs	Estimate
306357	Student Svcs Professional 4	Anchorage	FT		APT - Exempt Employees	39.5%	61,325	24,223	85,548	41,667
306360	Student Svcs Professional 2	Anchorage	FT		PERS - Classified	51.2%	51,782	26,512	78,294	38,134
306361	Student Svcs Professional 2	Anchorage	FT		PERS - Classified	51.2%	51,783	26,513	78,296	38,135
306364	Administrative Management 2	Anchorage	FT		APT - Exempt Employees	39.5%	113,650	44,892	158,542	77,219
306365	Admin Generalist 3	Anchorage	FT		PERS - Classified	51.2%	46,416	23,765	70,181	34,182
306366	Athletics Training 3	Anchorage	FT		APT - Exempt Employees	39.5%	68,403	27,019	95,422	46,476
306367	Professor	Anchorage	FT		United Academics BU	28.1%	100		100	-
306368	Athletics Coach 3	Anchorage	FT		APT - Exempt Employees	39.5%	145,558	57,495	203,053	98,899
306369	Athletics Coach 3	Anchorage	FT		APT - Exempt Employees	39.5%	77,904	30,772	108,676	52,931
306370	Admin Specialist 2	Anchorage	FT		PERS - Classified	51.2%	60,740	31,099	91,839	44,731
306371	Training & Development 2	Anchorage	FT		PERS - Classified	51.2%	45,539	23,316	68,855	33,536
306372	Athletics Coach 3	Anchorage	FT		APT - Exempt Employees	39.5%	175,673	69,391	245,064	119,360
306375	Fiscal Professional 3	Anchorage	FT		APT - Exempt Employees	39.5%	66,378	26,219	92,597	45,100
306379	Admin Specialist 1	Anchorage	FT		PERS - Classified	51.2%	46,416	23,765	70,181	34,182
306380	Student Svcs Technician 3	Anchorage	FT		PERS - Classified	51.2%	46,876	24,001	70,877	34,521
306381	Student Svcs Manager 2	Anchorage	FT		APT - Exempt Employees	39.5%	67,046	26,483	93,529	45,554
306383	Administrative Management 3	Anchorage	FT		APT - Exempt Employees	39.5%	115,947	45,799	161,746	78,780
306384	Student Svcs Professional 4	Anchorage	FT		APT - Exempt Employees	39.5%	67,735	26,755	94,490	46,022
306387	Admin Specialist 2	Anchorage	FT		PERS - Classified	51.2%	54,455	27,881	82,336	40,102
306388	Student Svcs Professional 3	Anchorage	FT		APT - Exempt Employees	39.5%	53,367	21,080	74,447	36,260
306389	Student Svcs Technician 3	Anchorage	FT		PERS - Classified	51.2%	45,539	23,316	68,855	33,536
306390	Student Svcs Professional 2	Anchorage	FT		PERS - Classified	51.2%	100		100	-
306391	Admin Generalist 3	Anchorage	FT		PERS - Classified	51.2%	41,614	21,306	62,920	30,646
306392	Admin Specialist 3	Anchorage	FT		APT - Exempt Employees	39.5%	61,325	24,223	85,548	-
306393	Mental Health Provider 2	Anchorage	FT		APT - Exempt Employees	39.5%	55,333	21,857	77,190	-
306394	Student Svcs Manager 3	Anchorage	FT		APT - Exempt Employees	39.5%	98,888	39,061	137,949	67,189
306395	Term Instructor	Anchorage	FT		United Academics BU	28.1%	100		100	-
306396	Communications Specialist 2	Anchorage	FT		PERS - Classified	51.2%	49,778	25,486	75,264	36,658
306398	Student Svcs Professional 2	Anchorage	FT		PERS - Classified	51.2%	45,539	23,316	68,855	33,536
306399	Student Svcs Professional 4	Anchorage	FT		APT - Exempt Employees	39.5%	63,162	24,949	88,111	42,915
306400	Student Svcs Technician 3	Anchorage	FT		PERS - Classified	51.2%	46,416	23,765	70,181	34,182
306401	Admin Generalist 4	Anchorage	FT		PERS - Classified	51.2%	59,529	30,479	90,008	43,839
306402	IS Professional 3A	Anchorage	FT		APT - Exempt Employees	39.5%	67,735	26,755	94,490	46,022
306403	Student Svcs Technician 3	Anchorage	FT		PERS - Classified	51.2%	45,539	23,316	68,855	33,536
306404	Student Svcs Professional 3	Anchorage	FT		APT - Exempt Employees	39.5%	69,781	27,563	97,344	47,412
306405	Student Svcs Manager 1	Anchorage	FT		APT - Exempt Employees	39.5%	57,190	22,590	79,780	38,857

Personal Services Expenditure Detail
University of Alaska

Component: Anchorage Campus (753)

RDU: University of Alaska Anchorage (235)

Notes:

1. If a position is split, an asterisk (*) will appear in the Split/Count column. If the split position is also counted in the component, two asterisks (**) will appear in the column.

2. "Pool" PCN refers to UA temporary positions, such as adjunct faculty; student employees; and other non-permanent staff. Multiple incumbents may share the same labor pool position number

PCN	Job Class Title	Location	Time Status	Split/ Count	Employee Class	Benefit Rate	Annual	Annual	Total	UGF
							Budgeted Salary	Benefits	Costs	Estimate
306406	Student Svcs Professional 3	Anchorage	FT		APT - Exempt Employees	39.5%	65,751	25,972	91,723	44,674
306407	Admin Generalist 4	Anchorage	FT		PERS - Classified	51.2%	46,416	23,765	70,181	34,182
306408	Student Svcs Technician 3	Anchorage	FT		PERS - Classified	51.2%	47,356	24,246	71,602	34,874
306409	Student Svcs Professional 4	Anchorage	FT		APT - Exempt Employees	39.5%	65,104	25,716	90,820	44,235
306410	Student Svcs Professional 4	Anchorage	FT		APT - Exempt Employees	39.5%	83,499	32,982	116,481	56,733
306411	Athletics Training 2	Anchorage	FT		APT - Exempt Employees	39.5%	62,285	24,603	86,888	42,319
306412	Athletics Administrator 2	Anchorage	FT		APT - Exempt Employees	39.5%	96,925	38,285	135,210	65,855
306413	Student Svcs Professional 2	Anchorage	FT		PERS - Classified	51.2%	45,773	23,436	69,209	33,709
306414	Vice Chancellor (Admin)	Anchorage	FT		Sr. Administrator	27.7%	187,569	51,957	239,526	116,663
306415	Stu Svcs Profess 2 (Exempt)	Anchorage	FT		APT - Exempt Employees	39.5%	51,782	20,454	72,236	35,183
306417	Student Svcs Manager 2	Anchorage	FT		APT - Exempt Employees	39.5%	67,046	26,483	93,529	45,554
306419	Physical Health Provider 4	Anchorage	FT		APT - Exempt Employees	39.5%	106,029	41,881	147,910	-
306420	Research Professional 3	Anchorage	FT		APT - Exempt Employees	39.5%	59,529	23,514	83,043	40,447
306421	Mental Health Provider 5	Anchorage	FT		APT - Exempt Employees	39.5%	112,522	44,446	156,968	-
306422	Admin Specialist 1	Anchorage	FT		PERS - Classified	51.2%	46,416	23,765	70,181	-
306423	Student Svcs Manager 2	Anchorage	FT		APT - Exempt Employees	39.5%	71,201	28,124	99,325	48,377
306424	Administrative Management 5	Anchorage	FT		APT - Exempt Employees	39.5%	118,285	46,723	165,008	80,368
306425	Student Svcs Technician 3	Anchorage	FT		PERS - Classified	51.2%	51,782	26,512	78,294	38,134
306426	Athletics Facs Ops & Pgms 1	Anchorage	FT		PERS - Classified	51.2%	40,778	20,878	61,656	30,030
306427	Student Svcs Professional 4	Anchorage	FT		APT - Exempt Employees	39.5%	56,084	22,153	78,237	38,106
306428	Fiscal Technician 3	Anchorage	FT		PERS - Classified	51.2%	45,539	23,316	68,855	-
306429	Mental Health Provider 2	Anchorage	FT		APT - Exempt Employees	39.5%	65,752	25,972	91,724	-
306555	Student Svcs Professional 2	Anchorage	FT		PERS - Classified	51.2%	100		100	-
306575	Student Svcs Professional 3	Anchorage	FT		APT - Exempt Employees	39.5%	54,977	21,716	76,693	37,354
306585	Student Svcs Professional 2	Anchorage	FT		PERS - Classified	51.2%	100		100	-
306600	Student Svcs Professional 3	Anchorage	FT		APT - Exempt Employees	39.5%	57,795	22,829	80,624	-
306640	Student Svcs Professional 1	Anchorage	FT		PERS - Classified	51.2%	49,778	25,486	75,264	36,658
306645	Stu Svcs Profess 2 (Exempt)	Anchorage	FT		APT - Exempt Employees	39.5%	51,782	20,454	72,236	35,183
306650	Fiscal Technician 4	Anchorage	FT		PERS - Classified	51.2%	54,455	27,881	82,336	40,102
306665	Safety Svcs-Emerg Dispatcher 1	Anchorage	FT		PERS - Classified	51.2%	42,814	21,921	64,735	31,530
306670	Admin Generalist 3	Anchorage	FT		PERS - Classified	51.2%	44,448	22,757	67,205	32,733
306685	Fiscal Professional 3	Anchorage	FT		APT - Exempt Employees	39.5%	63,162	24,949	88,111	42,915
306690	Student Svcs Professional 3	Anchorage	FT		APT - Exempt Employees	39.5%	100		100	-
306700	Stu Svcs Profess 3 (NonExempt)	Anchorage	FT		PERS - Classified	51.2%	40,382	20,676	61,058	29,739
306715	Athletics Coach 2	Anchorage	FT		APT - Exempt Employees	39.5%	57,796	22,829	80,625	39,269
306720	Safety Svcs-Police 2	Anchorage	FT		PERS - Classified	51.2%	60,686	31,071	91,757	44,691

Personal Services Expenditure Detail
University of Alaska

Component: Anchorage Campus (753)
RDU: University of Alaska Anchorage (235)

Notes:

1. If a position is split, an asterisk (*) will appear in the Split/Count column. If the split position is also counted in the component, two asterisks (**) will appear in the column.
2. "Pool" PCN refers to UA temporary positions, such as adjunct faculty; student employees; and other non-permanent staff. Multiple incumbents may share the same labor pool position number

PCN	Job Class Title	Location	Time Status	Split/ Count	Employee Class	Benefit Rate	Annual	Annual	Total	UGF
							Budgeted Salary	Benefits	Costs	Estimate
306725	Administrative Management 5	Anchorage	FT		APT - Exempt Employees	39.5%	134,592	53,164	187,756	91,448
306730	Safety Svcs-Police 4 (NE)	Anchorage	FT		PERS - Classified	51.2%	82,566	42,274	124,840	60,804
306745	Communications Specialist 4	Anchorage	FT		APT - Exempt Employees	39.5%	62,577	24,718	87,295	42,518
306750	Student Svcs Professional 3	Anchorage	FT		APT - Exempt Employees	39.5%	57,796	22,829	80,625	39,269
306770	Student Svcs Manager 2	Anchorage	FT		APT - Exempt Employees	39.5%	82,664	32,652	115,316	56,166
306775	Student Svcs Professional 2	Anchorage	PT		PERS - Classified	51.2%	22,690	11,617	34,307	16,710
306800	Student Svcs Technician 3	Anchorage	FT		PERS - Classified	51.2%	45,539	23,316	68,855	33,536
306825	Student Svcs Professional 3	Anchorage	FT		APT - Exempt Employees	39.5%	57,796	22,829	80,625	39,269
306850	IS Consultant 3A	Anchorage	FT		APT - Exempt Employees	39.5%	70,470	27,836	98,306	47,880
306885	Student Svcs Professional 3	Anchorage	FT		APT - Exempt Employees	39.5%	56,668	22,384	79,052	38,503
306886	Student Svcs Professional 3	Anchorage	FT		APT - Exempt Employees	39.5%	52,326	20,669	72,995	35,553
306887	Student Svcs Professional 3	Anchorage	FT		APT - Exempt Employees	39.5%	57,796	22,829	80,625	39,269
306888	Stu Svcs Profess 2 (Exempt)	Anchorage	FT		APT - Exempt Employees	39.5%	51,782	20,454	72,236	35,183
306953	Administrative Management 5	Anchorage	FT		APT - Exempt Employees	39.5%	117,116	46,261	163,377	-
306955	IS Consultant 2A	Anchorage	FT		PERS - Classified	51.2%	65,104	33,333	98,437	47,945
306959	Vice Chancellor (Admin)	Anchorage	FT		Sr. Administrator	27.7%	170,227	47,153	217,380	105,876
306962	Student Svcs Technician 2	Anchorage	FT		PERS - Classified	51.2%	100		100	-
306964	Admin Generalist 4	Anchorage	FT		PERS - Classified	51.2%	46,416	23,765	70,181	34,182
306967	Student Svcs Professional 2	Anchorage	FT		PERS - Classified	51.2%	43,648	22,348	65,996	32,144
306970	Student Svcs Professional 4	Anchorage	FT		APT - Exempt Employees	39.5%	65,104	25,716	90,820	44,235
306972	Student Svcs Manager 3	Anchorage	FT		APT - Exempt Employees	39.5%	101,874	40,240	142,114	69,218
306973	Student Svcs Technician 3	Anchorage	FT		PERS - Classified	51.2%	48,337	24,749	73,086	35,597
306975	Fiscal Technician 2	Anchorage	FT		PERS - Classified	51.2%	40,382	20,676	61,058	29,739
306977	Student Svcs Technician 3	Anchorage	FT		PERS - Classified	51.2%	45,539	23,316	68,855	33,536
306979	Stu Svcs Profess 2 (Exempt)	Anchorage	FT		APT - Exempt Employees	39.5%	49,778	19,662	69,440	33,821
306981	Student Svcs Technician 3	Anchorage	FT		PERS - Classified	51.2%	45,539	23,316	68,855	33,536
306986	Admin Specialist 3	Anchorage	FT		APT - Exempt Employees	39.5%	100		100	-
306987	Research Professional 1	Anchorage	FT		PERS - Classified	51.2%	42,063	21,536	63,599	30,976
306989	Admin Specialist 2	Anchorage	FT		PERS - Classified	51.2%	49,778	25,486	75,264	36,658
306990	Student Svcs Manager 3	Anchorage	FT		APT - Exempt Employees	39.5%	109,286	43,168	152,454	74,254
306991	Student Svcs Professional 1	Anchorage	FT		PERS - Classified	51.2%	57,191	29,282	86,473	42,117
306992	Admin Generalist 2	Anchorage	FT		PERS - Classified	51.2%	40,779	20,879	61,658	30,031
306993	Stu Svcs Profess 2 (Exempt)	Anchorage	FT		APT - Exempt Employees	39.5%	54,455	21,510	75,965	36,999
306994	Student Svcs Professional 1	Anchorage	FT		PERS - Classified	51.2%	53,891	27,592	81,483	39,687
306996	Communications Manager 1	Anchorage	FT		APT - Exempt Employees	39.5%	63,162	24,949	88,111	42,915
307000	Chancellor	Anchorage	FT		Officer	27.7%	291,115	80,639	371,754	181,065

Personal Services Expenditure Detail
University of Alaska

Component: Anchorage Campus (753)
RDU: University of Alaska Anchorage (235)

Notes:

1. If a position is split, an asterisk (*) will appear in the Split/Count column. If the split position is also counted in the component, two asterisks (**) will appear in the column.
2. "Pool" PCN refers to UA temporary positions, such as adjunct faculty; student employees; and other non-permanent staff. Multiple incumbents may share the same labor pool position number

PCN	Job Class Title	Location	Time Status	Split/ Count	Employee Class	Benefit Rate	Annual	Annual	Total Costs	UGF Estimate
							Budgeted Salary	Benefits		
307015	Administrative Management 3	Anchorage	FT		APT - Exempt Employees	39.5%	100		100	-
307025	Senior Administrator Director	Anchorage	FT		Sr. Administrator	27.7%	116,597	32,297	148,894	72,520
307105	Environmental Health/Safety 3	Anchorage	FT		APT - Exempt Employees	39.5%	90,410	35,712	126,122	61,429
307110	Administrative Professional 1	Anchorage	FT		APT - Exempt Employees	39.5%	100		100	-
307115	Fiscal Professional 1	Anchorage	FT		PERS - Classified	51.2%	51,783	26,513	78,296	38,135
307135	Fiscal Technician 4	Anchorage	FT		PERS - Classified	51.2%	52,346	26,801	79,147	38,549
307140	Fiscal Manager 3	Anchorage	FT		APT - Exempt Employees	39.5%	92,247	36,438	128,685	62,677
307145	Fiscal Technician 2	Anchorage	FT		PERS - Classified	51.2%	100		100	-
307220	Campus Services Printing 1	Anchorage	FT		PERS - Classified	51.2%	38,064	19,489	57,553	28,031
307225	Campus Services Generalist 4	Anchorage	FT		PERS - Classified	51.2%	40,779	20,879	61,658	30,031
307230	Campus Services Retail 2	Anchorage	FT		PERS - Classified	51.2%	37,355	19,126	56,481	27,509
307240	Campus Services Generalist 2	Anchorage	FT		PERS - Classified	51.2%	32,488	16,634	49,122	23,925
307250	Safety Svcs-Emerg Dispatcher 3	Anchorage	FT		PERS - Classified	51.2%	62,505	32,003	94,508	46,031
307270	Administrative Management 1	Anchorage	FT		APT - Exempt Employees	39.5%	60,740	23,992	84,732	41,269
307349	IS Professional 3A	Anchorage	FT		APT - Exempt Employees	39.5%	77,089	30,450	107,539	52,378
307352	Student Svcs Professional 3	Anchorage	FT		APT - Exempt Employees	39.5%	57,796	22,829	80,625	-
307353	Fiscal Professional 3	Anchorage	FT		APT - Exempt Employees	39.5%	61,325	24,223	85,548	41,667
307354	Fiscal Technician 3	Anchorage	FT		PERS - Classified	51.2%	40,382	20,676	61,058	29,739
307355	Assistant Professor	Anchorage	FT		United Academics BU	28.1%	79,997	22,479	102,476	49,912
307358	Athletics Training 2	Anchorage	FT		APT - Exempt Employees	39.5%	47,616	18,808	66,424	32,352
307359	Communications Manager 1	Anchorage	FT		APT - Exempt Employees	39.5%	100		100	-
307366	Communications Specialist 4	Anchorage	FT		APT - Exempt Employees	39.5%	54,455	21,510	75,965	36,999
307370	Development 3	Anchorage	FT		APT - Exempt Employees	39.5%	60,740	23,992	84,732	41,269
307371	Fiscal Professional 3	Anchorage	FT		APT - Exempt Employees	39.5%	100		100	-
307372	Admin Specialist 3	Anchorage	FT		APT - Exempt Employees	39.5%	100		100	-
307379	Admin Specialist 3	Anchorage	FT		APT - Exempt Employees	39.5%	64,456	25,460	89,916	43,794
307380	Associate Vice Chancellor	Anchorage	FT		Sr. Administrator	27.7%	136,874	37,914	174,788	85,132
307381	Fiscal Manager 2	Anchorage	FT		APT - Exempt Employees	39.5%	81,014	32,001	113,015	55,045
307382	Admin Generalist 1	Anchorage	FT		PERS - Classified	51.2%	100		100	-
307391	Fiscal Manager 2	Anchorage	FT		APT - Exempt Employees	39.5%	80,221	31,687	111,908	54,506
307392	Fiscal Technician 2	Anchorage	FT		PERS - Classified	51.2%	41,614	21,306	62,920	30,646
307393	Admin Specialist 4	Anchorage	FT		APT - Exempt Employees	39.5%	100		100	-
307396	Administrative Management 5	Anchorage	FT		APT - Exempt Employees	39.5%	144,302	56,999	201,301	98,045
307398	Fiscal Technician 2	Anchorage	FT		PERS - Classified	51.2%	100		100	-
307399	Admin Specialist 2	Anchorage	FT		PERS - Classified	51.2%	60,686	31,071	91,757	44,691
307401	Admin Generalist 3	Anchorage	FT		PERS - Classified	51.2%	62,577	32,039	94,616	46,084

Personal Services Expenditure Detail
University of Alaska

Component: Anchorage Campus (753)

RDU: University of Alaska Anchorage (235)

Notes:

1. If a position is split, an asterisk (*) will appear in the Split/Count column. If the split position is also counted in the component, two asterisks (**) will appear in the column.

2. "Pool" PCN refers to UA temporary positions, such as adjunct faculty; student employees; and other non-permanent staff. Multiple incumbents may share the same labor pool position number

PCN	Job Class Title	Location	Time Status	Split/ Count	Employee Class	Benefit Rate	Annual	Annual	Total	UGF
							Budgeted Salary	Benefits	Costs	Estimate
307406	Fiscal Technician 3	Anchorage	FT		PERS - Classified	51.2%	46,876	24,001	70,877	34,521
307408	Fiscal Technician 2	Anchorage	FT		PERS - Classified	51.2%	41,613	21,306	62,919	30,645
307409	Campus Services Generalist 3	Anchorage	FT		PERS - Classified	51.2%	38,064	19,489	57,553	28,031
307410	Administrative Management 4	Anchorage	FT		APT - Exempt Employees	39.5%	82,663	32,652	115,315	56,165
307411	Communications Specialist 3	Anchorage	FT		PERS - Classified	51.2%	56,668	29,014	85,682	41,732
307412	Fiscal Technician 3	Anchorage	FT		PERS - Classified	51.2%	45,539	23,316	68,855	33,536
307415	Admin Specialist 1	Anchorage	FT		PERS - Classified	51.2%	52,805	27,036	79,841	38,887
307417	Executive Director	Anchorage	FT		Officer	27.7%	106,458	29,489	135,947	66,214
307419	Fiscal Professional 1	Anchorage	FT		PERS - Classified	51.2%	59,529	30,479	90,008	43,839
307420	Fiscal Technician 4	Anchorage	FT		PERS - Classified	51.2%	54,455	27,881	82,336	40,102
307421	Campus Services Generalist 2	Anchorage	FT		PERS - Classified	51.2%	41,614	21,306	62,920	30,646
307424	Safety Svcs-Emerg Dispatcher 1	Anchorage	FT		PERS - Classified	51.2%	43,278	22,158	65,436	31,871
307426	Fiscal Professional 3	Anchorage	FT		APT - Exempt Employees	39.5%	73,372	28,982	102,354	49,852
307427	Fiscal Technician 3	Anchorage	FT		PERS - Classified	51.2%	45,539	23,316	68,855	33,536
307429	Safety Svcs-Emerg Dispatcher 1	Anchorage	FT		PERS - Classified	51.2%	42,401	21,709	64,110	31,225
307431	IS Professional 5A	Anchorage	FT		APT - Exempt Employees	39.5%	112,615	44,483	157,098	76,516
307432	Fiscal Professional 1	Anchorage	FT		PERS - Classified	51.2%	100		100	-
307436	Associate Vice Chancellor	Anchorage	FT		Sr. Administrator	27.7%	100		100	-
307439	Admin Specialist 2	Anchorage	FT		PERS - Classified	51.2%	61,325	31,398	92,723	45,162
307441	Vice Chancellor (Admin)	Anchorage	FT		Sr. Administrator	27.7%	193,652	53,642	247,294	120,446
307443	Admin Specialist 4	Anchorage	FT		APT - Exempt Employees	39.5%	64,457	25,461	89,918	43,795
307515	Admin Generalist 3	Anchorage	FT		PERS - Classified	51.2%	100		100	-
307525	Research Professional 3	Anchorage	FT		APT - Exempt Employees	39.5%	81,014	32,001	113,015	55,045
307545	Fiscal Manager 3	Anchorage	FT		APT - Exempt Employees	39.5%	88,656	35,019	123,675	60,237
307550	Student Svcs Manager 3	Anchorage	FT		APT - Exempt Employees	39.5%	100		100	-
307560	Safety Svcs-Parking 2	Anchorage	FT		PERS - Classified	51.2%	40,779	20,879	61,658	-
307580	Safety Svcs-Police 3	Anchorage	FT		PERS - Classified	51.2%	74,761	38,278	113,039	55,056
307622	Safety Svcs-Police 1	Anchorage	FT		PERS - Classified	51.2%	60,686	31,071	91,757	44,691
307626	Research Technician 4	Anchorage	FT		PERS - Classified	51.2%	49,778	25,486	75,264	36,658
307628	Fiscal Technician 3	Anchorage	FT		PERS - Classified	51.2%	45,539	23,316	68,855	33,536
307632	Safety Svcs-Police 2	Anchorage	FT		PERS - Classified	51.2%	60,686	31,071	91,757	44,691
307634	Safety Svcs-Police 2	Anchorage	FT		PERS - Classified	51.2%	60,686	31,071	91,757	44,691
307636	Safety Svcs-Police 2	Anchorage	FT		PERS - Classified	51.2%	57,178	29,275	86,453	42,108
307640	Admin Specialist 3	Anchorage	FT		APT - Exempt Employees	39.5%	69,781	27,563	97,344	-
307642	Campus Services Generalist 4	Anchorage	FT		PERS - Classified	51.2%	49,256	25,219	74,475	36,274
307646	Fiscal Technician 3	Anchorage	FT		PERS - Classified	51.2%	45,539	23,316	68,855	33,536

Personal Services Expenditure Detail
University of Alaska

Component: Anchorage Campus (753)
RDU: University of Alaska Anchorage (235)

Notes:

1. If a position is split, an asterisk (*) will appear in the Split/Count column. If the split position is also counted in the component, two asterisks (**) will appear in the column.
2. "Pool" PCN refers to UA temporary positions, such as adjunct faculty; student employees; and other non-permanent staff. Multiple incumbents may share the same labor pool position number

PCN	Job Class Title	Location	Time Status	Split/ Count	Employee Class	Benefit Rate	Annual	Annual	Total	UGF
							Budgeted Salary	Benefits	Costs	Estimate
307650	Environmental Health/Safety 3	Anchorage	FT		APT - Exempt Employees	39.5%	65,104	25,716	90,820	44,235
307652	Communications Specialist 3	Anchorage	PT		PERS - Classified	51.2%	25,891	13,256	39,147	14,301
307656	Fiscal Technician 3	Anchorage	FT		PERS - Classified	51.2%	45,539	23,316	68,855	33,536
307658	Fiscal Professional 3	Anchorage	FT		APT - Exempt Employees	39.5%	66,378	26,219	92,597	45,100
307662	Fiscal Manager 2	Anchorage	FT		APT - Exempt Employees	39.5%	100		100	-
307672	Fiscal Technician 2	Anchorage	FT		PERS - Classified	51.2%	42,011	21,510	63,521	30,938
307692	Campus Services Generalist 2	Anchorage	FT		PERS - Classified	51.2%	41,614	21,306	62,920	30,646
307698	Communications Specialist 5	Anchorage	FT		APT - Exempt Employees	39.5%	67,046	26,483	93,529	45,554
307749	IS Ops Technician 3	Anchorage	FT		PERS - Classified	51.2%	53,891	27,592	81,483	35,718
307751	Athletics Training 2	Anchorage	FT		APT - Exempt Employees	39.5%	100		100	-
307753	Library Technician 1	Anchorage	FT		PERS - Classified	51.2%	33,137	16,966	50,103	24,403
307755	Environmental Health/Safety 3	Anchorage	FT		APT - Exempt Employees	39.5%	78,634	31,060	109,694	53,427
307756	Safety Svcs-Parking 2	Anchorage	FT		PERS - Classified	51.2%	41,614	21,306	62,920	-
307757	Admin Specialist 3	Anchorage	FT		APT - Exempt Employees	39.5%	64,447	25,457	89,904	43,788
307758	Admin Generalist 2	Anchorage	FT		PERS - Classified	51.2%	100		100	-
307760	Administrative Professional 4	Anchorage	FT		APT - Exempt Employees	39.5%	94,085	37,164	131,249	63,926
307761	Admin Generalist 3	Anchorage	FT		PERS - Classified	51.2%	100		100	-
307762	Fiscal Technician 3	Anchorage	FT		PERS - Classified	51.2%	45,539	23,316	68,855	33,536
307763	Fiscal Technician 3	Anchorage	FT		PERS - Classified	51.2%	45,978	23,541	69,519	33,860
307764	Fiscal Technician 3	Anchorage	FT		PERS - Classified	51.2%	45,539	23,316	68,855	33,536
307765	Fiscal Technician 3	Anchorage	FT		PERS - Classified	51.2%	52,346	26,801	79,147	38,549
307768	Admin Specialist 1	Anchorage	FT		PERS - Classified	51.2%	47,857	24,503	72,360	35,243
307769	Safety Svcs-Police 2	Anchorage	FT		PERS - Classified	51.2%	60,686	31,071	91,757	44,691
307770	Fiscal Manager 3	Anchorage	FT		APT - Exempt Employees	39.5%	100,891	39,852	140,743	68,550
307771	Administrative Management 5	Anchorage	FT		APT - Exempt Employees	39.5%	147,246	58,162	205,408	100,046
307772	IS Professional 5A	Anchorage	FT		APT - Exempt Employees	39.5%	96,925	38,285	135,210	65,855
307773	Fiscal Professional 2	Anchorage	FT		APT - Exempt Employees	39.5%	62,577	24,718	87,295	42,518
307774	Safety Svcs-Emerg Dispatcher 1	Anchorage	FT		PERS - Classified	51.2%	40,382	20,676	61,058	29,739
307775	Fiscal Professional 2	Anchorage	FT		APT - Exempt Employees	39.5%	80,221	31,687	111,908	54,506
307776	Safety Svcs-Police 3	Anchorage	FT		PERS - Classified	51.2%	74,761	38,278	113,039	55,056
307777	Administrative Management 4	Anchorage	FT		APT - Exempt Employees	39.5%	108,164	42,725	150,889	73,491
307778	IS Net Technician 7	Anchorage	FT		PERS - Classified	51.2%	58,923	30,169	89,092	43,393
307780	IS Consultant 2A	Anchorage	FT		PERS - Classified	51.2%	51,782	26,512	78,294	38,134
307781	IS Net Technician 7	Anchorage	FT		PERS - Classified	51.2%	100		100	-
307782	IS Professional 5A	Anchorage	FT		APT - Exempt Employees	39.5%	94,086	37,164	131,250	63,926
307783	IS Consultant 5A	Anchorage	FT		APT - Exempt Employees	39.5%	76,316	30,145	106,461	51,853

Personal Services Expenditure Detail
University of Alaska

Component: Anchorage Campus (753)

RDU: University of Alaska Anchorage (235)

Notes:

1. If a position is split, an asterisk (*) will appear in the Split/Count column. If the split position is also counted in the component, two asterisks (**) will appear in the column.

2. "Pool" PCN refers to UA temporary positions, such as adjunct faculty; student employees; and other non-permanent staff. Multiple incumbents may share the same labor pool position number

PCN	Job Class Title	Location	Time Status	Split/ Count	Employee Class	Benefit Rate	Annual	Annual	Total	UGF
							Budgeted Salary	Benefits	Costs	Estimate
307784	Administrative Management 4	Anchorage	FT		APT - Exempt Employees	39.5%	100		100	-
307785	Research Professional 4	Anchorage	FT		APT - Exempt Employees	39.5%	102,918	40,653	143,571	69,927
307786	Administrative Management 3	Anchorage	FT		APT - Exempt Employees	39.5%	97,927	38,681	136,608	66,536
307787	Fiscal Manager 4	Anchorage	FT		APT - Exempt Employees	39.5%	100,892	39,852	140,744	68,551
307800	Development 5	Anchorage	FT		APT - Exempt Employees	39.5%	93,124	36,784	129,908	63,273
307802	Fiscal Manager 2	Anchorage	FT		APT - Exempt Employees	39.5%	86,882	34,318	121,200	59,032
307804	Communications Specialist 3	Anchorage	FT		PERS - Classified	51.2%	51,782	26,512	78,294	38,134
307806	Development 2	Anchorage	FT		PERS - Classified	51.2%	51,782	26,512	78,294	-
307808	Administrative Management 5	Anchorage	FT		APT - Exempt Employees	39.5%	105,006	41,477	146,483	71,346
307810	Athletics Facs, Ops & Pgms 2	Anchorage	FT		PERS - Classified	51.2%	100		100	-
307812	Communications Manager 3	Anchorage	FT		APT - Exempt Employees	39.5%	88,656	35,019	123,675	60,237
307814	Communications Specialist 4	Anchorage	FT		APT - Exempt Employees	39.5%	42,120	16,637	58,757	28,618
307816	Human Resources Professional 4	Anchorage	FT		APT - Exempt Employees	39.5%	100		100	-
307818	Human Resources Professional 3	Anchorage	FT		APT - Exempt Employees	39.5%	100		100	-
307822	Safety Svcs-Police 2	Anchorage	FT		PERS - Classified	51.2%	63,777	32,654	96,431	46,967
307824	Safety Svcs-Police 2	Anchorage	FT		PERS - Classified	51.2%	60,686	31,071	91,757	44,691
307826	Fiscal Professional 1	Anchorage	FT		PERS - Classified	51.2%	49,778	25,486	75,264	36,658
307828	IS Consultant 4A	Anchorage	FT		APT - Exempt Employees	39.5%	65,104	25,716	90,820	44,235
307831	Development 3	Anchorage	FT		APT - Exempt Employees	39.5%	69,781	27,563	97,344	47,412
307832	Development 4	Anchorage	FT		APT - Exempt Employees	39.5%	100		100	-
307833	Training & Development 5	Anchorage	FT		APT - Exempt Employees	39.5%	77,903	30,772	108,675	52,931
307834	Communications Specialist 3	Anchorage	FT		PERS - Classified	51.2%	40,264	20,615	60,879	29,652
307835	IS Net Technician 7	Anchorage	FT		PERS - Classified	51.2%	60,155	30,799	90,954	44,300
307836	Development 4	Anchorage	FT		APT - Exempt Employees	39.5%	73,372	28,982	102,354	49,852
308005	Administrative Management 2	Anchorage	FT		APT - Exempt Employees	39.5%	90,410	35,712	126,122	61,429
308015	Professor	Anchorage	FT		United Academics BU	28.1%	81,865	23,004	104,869	51,077
308020	Campus Services Printing 1	Anchorage	PT		PERS - Classified	51.2%	28,548	14,617	43,165	21,024
308025	Admin Specialist 2	Anchorage	FT		PERS - Classified	51.2%	50,780	25,999	76,779	37,396
308040	Fac Svcs-MO&U Supervisor 4	Anchorage	FT		APT - Exempt Employees	39.5%	86,042	33,987	120,029	58,461
308055	Crafts & Trades II (CT2)	Anchorage	FT		AHECTE- Labor Trades & Crafts	51.7%	60,582	31,321	91,903	44,762
308060	Environmental Health/Safety 3	Anchorage	FT		APT - Exempt Employees	39.5%	100		100	-
308070	Crafts & Trades III (CT3)	Anchorage	FT		AHECTE- Labor Trades & Crafts	51.7%	63,016	32,579	95,595	46,560
308075	Fac Svcs-MO&U Supervisor 5	Anchorage	FT		APT - Exempt Employees	39.5%	89,513	35,358	124,871	60,819
308080	Crafts & Trades I (CT1)	Anchorage	FT		AHECTE- Labor Trades & Crafts	51.7%	49,755	25,723	75,478	36,762
308082	Crafts & Trades III (CT3)	Anchorage	FT		AHECTE- Labor Trades & Crafts	51.7%	60,582	31,321	91,903	44,762
308085	Crafts & Trades III (CT3)	Anchorage	FT		AHECTE- Labor Trades & Crafts	51.7%	60,582	31,321	91,903	44,762

Personal Services Expenditure Detail
University of Alaska

Component: Anchorage Campus (753)
RDU: University of Alaska Anchorage (235)

Notes:

1. If a position is split, an asterisk (*) will appear in the Split/Count column. If the split position is also counted in the component, two asterisks (**) will appear in the column.
2. "Pool" PCN refers to UA temporary positions, such as adjunct faculty; student employees; and other non-permanent staff. Multiple incumbents may share the same labor pool position number

PCN	Job Class Title	Location	Time Status	Split/ Count	Employee Class	Benefit Rate	Annual	Annual	Total	UGF
							Budgeted Salary	Benefits	Costs	Estimate
308090	Crafts & Trades I (CT1)	Anchorage	FT		AHECTE- Labor Trades & Crafts	51.7%	47,823	24,724	72,547	35,335
308092	Crafts & Trades II (CT2)	Anchorage	FT		AHECTE- Labor Trades & Crafts	51.7%	66,521	34,391	100,912	49,150
308100	Crafts & Trades III (CT3)	Anchorage	FT		AHECTE- Labor Trades & Crafts	51.7%	66,919	34,597	101,516	49,444
308105	Crafts & Trades III (CT3)	Anchorage	FT		AHECTE- Labor Trades & Crafts	51.7%	66,919	34,597	101,516	49,444
308110	Fac Engineering 2	Anchorage	FT		PERS - Classified	51.2%	74,772	38,283	113,055	55,064
308135	Crafts & Trades I (CT1)	Anchorage	FT		AHECTE- Labor Trades & Crafts	51.7%	54,938	28,403	83,341	40,592
308150	Crafts & Trades II (CT2)	Anchorage	FT		AHECTE- Labor Trades & Crafts	51.7%	59,386	30,703	90,089	43,878
308165	Crafts & Trades II (CT2)	Anchorage	FT		AHECTE- Labor Trades & Crafts	51.7%	53,804	27,817	81,621	39,754
308180	Fac Svcs-MO&U Supervisor 5	Anchorage	FT		APT - Exempt Employees	39.5%	76,316	30,145	106,461	51,853
308185	Maint Service Worker IV (MSW4)	Anchorage	FT		AHECTE- Labor Trades & Crafts	51.7%	44,214	22,859	67,073	32,668
308190	Maint Service Workr III (MSW3)	Anchorage	FT		AHECTE- Labor Trades & Crafts	51.7%	39,304	20,320	59,624	29,040
308195	Maint Service Workr III (MSW3)	Anchorage	FT		AHECTE- Labor Trades & Crafts	51.7%	42,493	21,969	64,462	31,397
308200	Maint Service Workr III (MSW3)	Anchorage	FT		AHECTE- Labor Trades & Crafts	51.7%	37,750	19,517	57,267	27,892
308205	Fac Engineering 5	Anchorage	FT		APT - Exempt Employees	39.5%	94,085	37,164	131,249	63,926
308210	Admin Specialist 2	Anchorage	FT		PERS - Classified	51.2%	49,778	25,486	75,264	36,658
308215	Crafts & Trades III (CT3)	Anchorage	FT		AHECTE- Labor Trades & Crafts	51.7%	47,824	24,725	72,549	35,336
308220	Crafts & Trades II (CT2)	Anchorage	FT		AHECTE- Labor Trades & Crafts	51.7%	58,211	30,095	88,306	43,010
308235	Admin Specialist 2	Anchorage	FT		PERS - Classified	51.2%	49,778	25,486	75,264	36,658
308240	Maint Service Worker IV (MSW4)	Anchorage	FT		AHECTE- Labor Trades & Crafts	51.7%	100		100	-
308245	Maint Service Worker IV (MSW4)	Anchorage	FT		AHECTE- Labor Trades & Crafts	51.7%	49,775	25,734	75,509	36,777
308250	Fac Svcs-MO&U Supervisor 4	Anchorage	FT		APT - Exempt Employees	39.5%	81,041	32,011	113,052	55,063
308260	Crafts & Trades I (CT1)	Anchorage	FT		AHECTE- Labor Trades & Crafts	51.7%	54,937	28,402	83,339	40,591
308265	Maint Service Worker II (MSW2)	Anchorage	FT		AHECTE- Labor Trades & Crafts	51.7%	100		100	-
308270	Fac Svcs-MO&U Supervisor 4	Anchorage	FT		APT - Exempt Employees	39.5%	81,829	32,322	114,151	55,598
308285	Maint Service Workr III (MSW3)	Anchorage	FT		AHECTE- Labor Trades & Crafts	51.7%	37,750	19,517	57,267	27,892
308290	Administrative Professional 4	Anchorage	FT		APT - Exempt Employees	39.5%	100		100	-
308295	Maint Service Worker II (MSW2)	Anchorage	FT		AHECTE- Labor Trades & Crafts	51.7%	100		100	-
308300	Crafts & Trades III (CT3)	Anchorage	FT		AHECTE- Labor Trades & Crafts	51.7%	65,597	33,914	99,511	48,467
308305	Crafts & Trades III (CT3)	Anchorage	FT		AHECTE- Labor Trades & Crafts	51.7%	66,919	34,597	101,516	49,444
308310	Professor	Anchorage	FT		United Academics BU	28.1%	106,013	29,790	135,803	66,144
308315	Crafts & Trades III (CT3)	Anchorage	FT		AHECTE- Labor Trades & Crafts	51.7%	74,851	38,698	113,549	55,305
308320	IS Professional 3A	Anchorage	FT		APT - Exempt Employees	39.5%	67,046	26,483	93,529	45,554
308325	Maint Service Worker IV (MSW4)	Anchorage	FT		AHECTE- Labor Trades & Crafts	51.7%	47,866	24,747	72,613	35,367
308330	Assistant Professor	Anchorage	FT		United Academics BU	28.1%	120,000	33,720	153,720	74,870
308360	Student Svcs Professional 2	Anchorage	FT		PERS - Classified	51.2%	51,782	26,512	78,294	38,134
308370	Student Svcs Manager 3	Anchorage	FT		APT - Exempt Employees	39.5%	91,329	36,075	127,404	62,053

Personal Services Expenditure Detail
University of Alaska

Component: Anchorage Campus (753)
RDU: University of Alaska Anchorage (235)

Notes:

1. If a position is split, an asterisk (*) will appear in the Split/Count column. If the split position is also counted in the component, two asterisks (**) will appear in the column.
2. "Pool" PCN refers to UA temporary positions, such as adjunct faculty; student employees; and other non-permanent staff. Multiple incumbents may share the same labor pool position number

PCN	Job Class Title	Location	Time Status	Split/ Count	Employee Class	Benefit Rate	Annual	Annual	Total	UGF
							Budgeted Salary	Benefits	Costs	Estimate
308380	Crafts & Trades II (CT2)	Anchorage	FT		AHECTE- Labor Trades & Crafts	51.7%	67,864	35,086	102,950	50,142
308415	Maintenance Serv Worker (MSW1)	Anchorage	FT		AHECTE- Labor Trades & Crafts	51.7%	100		100	-
308430	Crafts & Trades III (CT3)	Anchorage	FT		AHECTE- Labor Trades & Crafts	51.7%	63,016	32,579	95,595	46,560
308450	Admin Specialist 2	Anchorage	FT		PERS - Classified	51.2%	51,782	26,512	78,294	38,134
308452	Administrative Management 5	Anchorage	FT		APT - Exempt Employees	39.5%	138,727	54,797	193,524	94,257
308453	Safety Svcs-Police 2	Anchorage	FT		PERS - Classified	51.2%	71,823	36,773	108,596	52,893
308455	Safety Svcs-Emerg Dispatcher 1	Anchorage	FT		PERS - Classified	51.2%	55,446	28,388	83,834	40,832
308456	Safety Svcs-Emerg Dispatcher 1	Anchorage	FT		PERS - Classified	51.2%	58,888	30,151	89,039	43,367
308502	Maint Service Workr III (MSW3)	Anchorage	FT		AHECTE- Labor Trades & Crafts	51.7%	45,998	23,781	69,779	33,986
308503	Crafts & Trades III (CT3)	Anchorage	FT		AHECTE- Labor Trades & Crafts	51.7%	68,220	35,270	103,490	50,405
308504	Admin Specialist 2	Anchorage	FT		PERS - Classified	51.2%	71,200	36,454	107,654	52,434
308505	Crafts & Trades III (CT3)	Anchorage	FT		AHECTE- Labor Trades & Crafts	51.7%	68,220	35,270	103,490	50,405
308506	Crafts & Trades II (CT2)	Anchorage	FT		AHECTE- Labor Trades & Crafts	51.7%	61,778	31,939	93,717	45,646
308507	Crafts & Trades I (CT1)	Anchorage	FT		AHECTE- Labor Trades & Crafts	51.7%	49,754	25,723	75,477	36,762
308508	Fac Svcs-MO&U Supervisor 4	Anchorage	FT		APT - Exempt Employees	39.5%	71,890	28,397	100,287	48,845
308509	Maint Service Worker IV (MSW4)	Anchorage	FT		AHECTE- Labor Trades & Crafts	51.7%	44,214	22,859	67,073	32,668
308513	Crafts & Trades III (CT3)	Anchorage	FT		AHECTE- Labor Trades & Crafts	51.7%	64,275	33,230	97,505	47,491
308514	Crafts & Trades III (CT3)	Anchorage	FT		AHECTE- Labor Trades & Crafts	51.7%	60,582	31,321	91,903	44,762
308515	Crafts & Trades II (CT2)	Anchorage	FT		AHECTE- Labor Trades & Crafts	51.7%	53,804	27,817	81,621	39,754
308517	Fac Svcs-MO&U Supervisor 4	Anchorage	FT		APT - Exempt Employees	39.5%	67,045	26,483	93,528	45,553
308518	Maint Service Worker IV (MSW4)	Anchorage	FT		AHECTE- Labor Trades & Crafts	51.7%	46,921	24,258	71,179	34,668
308519	Crafts & Trades III (CT3)	Anchorage	FT		AHECTE- Labor Trades & Crafts	51.7%	60,582	31,321	91,903	44,762
308520	Fac Engineering 5	Anchorage	FT		APT - Exempt Employees	39.5%	92,248	36,438	128,686	62,677
308522	Library Technician 3	Anchorage	FT		PERS - Classified	51.2%	44,161	22,610	66,771	32,522
308525	Fiscal Manager 2	Anchorage	FT		APT - Exempt Employees	39.5%	82,664	32,652	115,316	56,166
308528	Fac Engineering 6	Anchorage	FT		APT - Exempt Employees	39.5%	92,248	36,438	128,686	62,677
308529	Fac Engineering 5	Anchorage	FT		APT - Exempt Employees	39.5%	96,925	38,285	135,210	65,855
308530	Fac Engineering 3	Anchorage	FT		APT - Exempt Employees	39.5%	85,190	33,650	118,840	57,882
308531	Fac Svcs-MO&U Supervsr 3 (NE)	Anchorage	FT		PERS - Classified	51.2%	67,046	34,328	101,374	49,375
308532	Fac Engineering 7	Anchorage	FT		APT - Exempt Employees	39.5%	128,078	50,591	178,669	87,022
308533	Admin Specialist 3	Anchorage	FT		APT - Exempt Employees	39.5%	58,381	23,060	81,441	39,667
308534	Crafts & Trades III (CT3)	Anchorage	FT		AHECTE- Labor Trades & Crafts	51.7%	76,362	39,479	115,841	56,421
308536	Professor	Anchorage	FT		United Academics BU	28.1%	89,258	25,081	114,339	55,690
308537	Crafts & Trades II (CT2)	Anchorage	FT		AHECTE- Labor Trades & Crafts	51.7%	58,211	30,095	88,306	43,010
308538	Crafts & Trades III (CT3)	Anchorage	FT		AHECTE- Labor Trades & Crafts	51.7%	63,016	32,579	95,595	46,560
308539	Maint Service Worker IV (MSW4)	Anchorage	FT		AHECTE- Labor Trades & Crafts	51.7%	39,304	20,320	59,624	29,040

Personal Services Expenditure Detail
University of Alaska

Component: Anchorage Campus (753)
RDU: University of Alaska Anchorage (235)

Notes:

1. If a position is split, an asterisk (*) will appear in the Split/Count column. If the split position is also counted in the component, two asterisks (**) will appear in the column.
2. "Pool" PCN refers to UA temporary positions, such as adjunct faculty; student employees; and other non-permanent staff. Multiple incumbents may share the same labor pool position number

PCN	Job Class Title	Location	Time Status	Split/ Count	Employee Class	Benefit Rate	Annual	Annual	Total	UGF
							Budgeted Salary	Benefits	Costs	Estimate
308540	Student Svcs Professional 3	Anchorage	FT		APT - Exempt Employees	39.5%	64,457	25,461	89,918	43,795
308542	Admin Specialist 3	Anchorage	FT		APT - Exempt Employees	39.5%	54,456	21,510	75,966	9,990
308543	Fiscal Professional 2	Anchorage	FT		APT - Exempt Employees	39.5%	62,577	24,718	87,295	14,456
308544	Fiscal Manager 1	Anchorage	FT		APT - Exempt Employees	39.5%	81,014	32,001	113,015	55,045
308545	FAC Svcs Drafting 1	Anchorage	FT		PERS - Classified	51.2%	60,155	30,799	90,954	44,300
308547	Admin Specialist 2	Anchorage	FT		PERS - Classified	51.2%	51,782	26,512	78,294	38,134
308548	Student Svcs Manager 2	Anchorage	FT		APT - Exempt Employees	39.5%	90,410	35,712	126,122	61,429
308549	IS Net Technician 7	Anchorage	FT		PERS - Classified	51.2%	58,923	30,169	89,092	43,393
308550	Professor	Anchorage	FT		United Academics BU	28.1%	120,099	33,748	153,847	74,932
308552	Safety Svcs-Parking 1	Anchorage	FT		PERS - Classified	51.2%	37,354	19,125	56,479	-
308554	Crafts & Trades III (CT3)	Anchorage	FT		AHECTE- Labor Trades & Crafts	51.7%	64,275	33,230	97,505	47,491
308556	Assistant Professor	Anchorage	FT		United Academics BU	28.1%	100		100	-
308557	Term Asst Professor	Anchorage	FT		United Academics BU	28.1%	68,680	19,299	87,979	42,851
308558	Fiscal Professional 1	Anchorage	FT		PERS - Classified	51.2%	57,190	29,281	86,471	42,116
308559	Library Technician 3	Anchorage	FT		PERS - Classified	51.2%	40,382	20,676	61,058	29,739
308560	Associate Professor	Anchorage	FT		United Academics BU	28.1%	100		100	-
308561	Assistant Professor	Anchorage	FT		United Academics BU	28.1%	68,680	19,299	87,979	42,851
308562	Assistant Professor	Anchorage	FT		United Academics BU	28.1%	79,996	22,479	102,475	24,956
308563	Student Svcs Professional 2	Anchorage	FT		PERS - Classified	51.2%	54,977	28,148	83,125	40,487
308564	Admin Generalist 2	Anchorage	FT		PERS - Classified	51.2%	42,011	21,510	63,521	30,938
308565	Research Professional 4	Anchorage	FT		APT - Exempt Employees	39.5%	102,918	40,653	143,571	69,927
308567	Professor	Anchorage	FT		United Academics BU	28.1%	128,788	36,189	164,977	80,353
308569	Training & Development 4	Anchorage	FT		APT - Exempt Employees	39.5%	100		100	-
308570	Associate Professor	Anchorage	FT		United Academics BU	28.1%	75,074	21,096	96,170	46,840
308571	Associate Professor	Anchorage	FT		United Academics BU	28.1%	72,889	20,482	93,371	45,477
308573	Associate Professor	Anchorage	FT		United Academics BU	28.1%	57,967	16,289	74,256	36,167
308574	Professor	Anchorage	FT		United Academics BU	28.1%	86,867	24,410	111,277	54,198
309005	Administrative Management 3	Anchorage	FT		APT - Exempt Employees	39.5%	100		100	-
309015	Campus Services Retail 4	Anchorage	FT		APT - Exempt Employees	39.5%	100		100	-
309050	Campus Services Retail 5	Anchorage	FT		APT - Exempt Employees	39.5%	54,455	21,510	75,965	-
309055	Admin Generalist 2	Anchorage	FT		PERS - Classified	51.2%	46,876	24,001	70,877	-
309125	Safety Svcs-Parking 1	Anchorage	FT		PERS - Classified	51.2%	36,937	18,912	55,849	-
309145	Admin Generalist 4	Anchorage	FT		PERS - Classified	51.2%	55,520	28,426	83,946	4,089
309155	Student Svcs Manager 2	Anchorage	FT		APT - Exempt Employees	39.5%	100		100	-
309170	Crafts & Trades I (CT1)	Anchorage	FT		AHECTE- Labor Trades & Crafts	51.7%	52,839	27,318	80,157	-
309175	Crafts & Trades II (CT2)	Anchorage	FT		AHECTE- Labor Trades & Crafts	51.7%	60,582	31,321	91,903	-

Personal Services Expenditure Detail
University of Alaska

Component: Anchorage Campus (753)
RDU: University of Alaska Anchorage (235)

Notes:

1. If a position is split, an asterisk (*) will appear in the Split/Count column. If the split position is also counted in the component, two asterisks (**) will appear in the column.
2. "Pool" PCN refers to UA temporary positions, such as adjunct faculty; student employees; and other non-permanent staff. Multiple incumbents may share the same labor pool position number

PCN	Job Class Title	Location	Time Status	Split/ Count	Employee Class	Benefit Rate	Annual	Annual	Total	UGF
							Budgeted Salary	Benefits	Costs	Estimate
309186	Admin Specialist 3	Anchorage	FT		APT - Exempt Employees	39.5%	70,471	27,836	98,307	-
309190	Safety Svcs-Police 2	Anchorage	FT		PERS - Classified	51.2%	60,686	31,071	91,757	44,691
309192	Fiscal Professional 2	Anchorage	FT		APT - Exempt Employees	39.5%	59,528	23,514	83,042	-
309194	Campus Services Retail 2	Anchorage	FT		PERS - Classified	51.2%	100		100	-
309195	Campus Services Retail 1	Anchorage	FT		PERS - Classified	51.2%	100		100	-
309196	Fiscal Professional 1	Anchorage	FT		PERS - Classified	51.2%	51,260	26,245	77,505	-
309197	Fiscal Technician 2	Anchorage	FT		PERS - Classified	51.2%	47,857	24,503	72,360	-
309199	Crafts & Trades II (CT2)	Anchorage	FT		AHECTE- Labor Trades & Crafts	51.7%	61,778	31,939	93,717	-
309200	Campus Services Retail 3	Anchorage	FT		APT - Exempt Employees	39.5%	100		100	-
309201	Student Svcs Professional 3	Anchorage	FT		APT - Exempt Employees	39.5%	48,717	19,243	67,960	33,101
309203	Administrative Management 2	Anchorage	FT		APT - Exempt Employees	39.5%	100		100	-
309204	Campus Services Retail 4 (NE)	Anchorage	FT		PERS - Classified	51.2%	100		100	-
309210	Admin Generalist 3	Anchorage	FT		PERS - Classified	51.2%	30,170	15,447	45,617	-
309301	Director (Academic-Faculty)	Anchorage	FT		Non-Represented Faculty	27.7%	149,041	41,284	190,325	92,699
309302	Training & Development 4	Anchorage	PT		APT - Exempt Employees	39.5%	64,456	25,460	89,916	43,794
309304	Campus Services Generalist 2	Anchorage	PT		PERS - Classified	51.2%	24,367	12,476	36,843	17,945
309306	Assistant Professor	Anchorage	FT		United Academics BU	28.1%	72,500	20,373	92,873	45,234
309307	Training & Development 2	Anchorage	FT		PERS - Classified	51.2%	100		100	-
309309	Admin Specialist 4	Anchorage	FT		APT - Exempt Employees	39.5%	85,191	33,650	118,841	54,988
309310	Student Svcs Professional 2	Anchorage	FT		PERS - Classified	51.2%	49,778	25,486	75,264	36,658
309312	Training & Development 3	Anchorage	FT		PERS - Classified	51.2%	62,578	32,040	94,618	18,803
309313	Admin Generalist 4	Anchorage	FT		PERS - Classified	51.2%	50,780	25,999	76,779	37,396
309316	Student Svcs Professional 3	Anchorage	FT		APT - Exempt Employees	39.5%	71,890	28,397	100,287	48,845
309317	Training & Development 4	Anchorage	FT		APT - Exempt Employees	39.5%	72,642	28,694	101,336	49,356
309320	Training & Development 4	Anchorage	FT		APT - Exempt Employees	39.5%	60,740	23,992	84,732	41,269
309321	Assistant Professor	Anchorage	FT		United Academics BU	28.1%	72,914	20,489	93,403	22,746
309323	Mental Health Provider 2	Anchorage	FT		APT - Exempt Employees	39.5%	104,400	41,238	145,638	70,934
309325	Term Instructor	Anchorage	FT		United Academics BU	28.1%	45,463	12,775	58,238	28,365
309327	Associate Director/Faculty	Anchorage	FT		Non-Represented Faculty	27.7%	84,153	23,310	107,463	8,898
309328	Mental Health Provider 2	Anchorage	PT		APT - Exempt Employees	39.5%	49,124	19,404	68,528	-
309330	Student Svcs Professional 2	Anchorage	FT		PERS - Classified	51.2%	52,806	27,037	79,843	38,888
309331	Physical Health Provider 2	Anchorage	FT		PERS - Classified	51.2%	42,748	21,887	64,635	-
309332	Mental Health Provider 4	Anchorage	FT		APT - Exempt Employees	39.5%	79,217	31,291	110,508	-
309333	Term Instructor	Anchorage	FT		Non-Represented Faculty	27.7%	89,881	24,897	114,778	34,939
309338	Administrative Management 3	Anchorage	FT		APT - Exempt Employees	39.5%	80,221	31,687	111,908	18,401
309339	Physical Health Provider 4	Anchorage	PT		APT - Exempt Employees	39.5%	39,608	15,645	55,253	-

Personal Services Expenditure Detail
University of Alaska

Component: Anchorage Campus (753)
RDU: University of Alaska Anchorage (235)

Notes:

1. If a position is split, an asterisk (*) will appear in the Split/Count column. If the split position is also counted in the component, two asterisks (**) will appear in the column.
2. "Pool" PCN refers to UA temporary positions, such as adjunct faculty; student employees; and other non-permanent staff. Multiple incumbents may share the same labor pool position number

PCN	Job Class Title	Location	Time Status	Split/ Count	Employee Class	Benefit Rate	Annual	Annual	Total Costs	UGF Estimate
							Budgeted Salary	Benefits		
309341	Communications Manager 2	Anchorage	FT		APT - Exempt Employees	39.5%	79,177	31,275	110,452	53,796
309343	Admin Specialist 2	Anchorage	FT		PERS - Classified	51.2%	61,324	31,398	92,722	17,161
309347	Fiscal Technician 4	Anchorage	FT		PERS - Classified	51.2%	46,416	23,765	70,181	11,546
309348	Research Professional 4	Anchorage	FT		APT - Exempt Employees	39.5%	86,047	33,989	120,036	-
309349	IS Ops Technician 2	Anchorage	FT		PERS - Classified	51.2%	51,782	26,512	78,294	36,609
309350	Student Svcs Manager 2	Anchorage	FT		APT - Exempt Employees	39.5%	82,664	32,652	115,316	56,166
309351	Student Svcs Technician 3	Anchorage	FT		PERS - Classified	51.2%	57,796	29,592	87,388	42,563
309353	Physical Health Provider 3	Anchorage	FT		APT - Exempt Employees	39.5%	70,176	27,720	97,896	-
309354	Admin Specialist 3	Anchorage	FT		APT - Exempt Employees	39.5%	35,430	13,995	49,425	24,073
309356	Term Asst Professor	Anchorage	FT		United Academics BU	28.1%	60,000	16,860	76,860	37,435
309357	Training & Development 4	Anchorage	FT		APT - Exempt Employees	39.5%	74,061	29,254	103,315	-
309358	Term Instructor	Anchorage	FT		United Academics BU	28.1%	57,000	16,017	73,017	35,563
309359	Training & Development 4	Anchorage	FT		APT - Exempt Employees	39.5%	100		100	-
309363	Fiscal Professional 2	Anchorage	FT		PERS - Classified	51.2%	58,381	29,891	88,272	14,523
309364	Associate Director/Faculty	Anchorage	FT		Non-Represented Faculty	27.7%	99,301	27,506	126,807	33,228
309365	Term Instructor	Anchorage	FT		United Academics BU	28.1%	57,570	16,177	73,747	35,919
309366	Research Technician 2	Anchorage	PT		PERS - Classified	51.2%	23,096	11,825	34,921	17,009
309369	Assistant Professor	Anchorage	FT		United Academics BU	28.1%	65,650	18,448	84,098	40,960
309371	Student Svcs Manager 1	Anchorage	FT		APT - Exempt Employees	39.5%	61,325	24,223	85,548	-
309372	Student Svcs Professional 2	Anchorage	FT		PERS - Classified	51.2%	49,778	25,486	75,264	-
309373	Admin Generalist 3	Anchorage	FT		PERS - Classified	51.2%	41,217	21,103	62,320	-
309374	Physical Health Provider 4	Anchorage	FT		APT - Exempt Employees	39.5%	100		100	-
309375	Mental Health Provider 1	Anchorage	FT		APT - Exempt Employees	39.5%	50,706	20,029	70,735	-
309376	Mental Health Provider 2	Anchorage	FT		APT - Exempt Employees	39.5%	55,333	21,857	77,190	-
309379	Term Instructor	Anchorage	FT		United Academics BU	28.1%	57,570	16,177	73,747	35,919
309382	Admin Generalist 2	Anchorage	FT		PERS - Classified	51.2%	30,467	15,599	46,066	22,437
309383	Term Instructor	Anchorage	FT		United Academics BU	28.1%	57,570	16,177	73,747	35,919
309384	Research Professional 2	Anchorage	FT		APT - Exempt Employees	39.5%	100		100	-
309385	Research Professional 3	Anchorage	FT		APT - Exempt Employees	39.5%	100		100	-
309425	Research Professional 4	Anchorage	FT		APT - Exempt Employees	39.5%	100		100	-
309426	Research Professional 3	Anchorage	FT		APT - Exempt Employees	39.5%	63,162	24,949	88,111	42,915
309427	Research Professional 2	Anchorage	FT		APT - Exempt Employees	39.5%	100		100	-
500307	Crafts & Trades I (CT1)	Anchorage	FT		AHECTE- Labor Trades & Crafts	51.7%	100		100	-
540121	Media Services Technician	Anchorage	FT		PERS - Classified	51.2%	100		100	-
540154	Administrative Professional 3	Anchorage	FT		APT - Exempt Employees	39.5%	100		100	-
540223	Student Svcs Technician 1	Anchorage	FT		PERS - Classified	51.2%	100		100	-

Personal Services Expenditure Detail
University of Alaska

Component: Anchorage Campus (753)
RDU: University of Alaska Anchorage (235)

Notes:

1. If a position is split, an asterisk (*) will appear in the Split/Count column. If the split position is also counted in the component, two asterisks (**) will appear in the column.
2. "Pool" PCN refers to UA temporary positions, such as adjunct faculty; student employees; and other non-permanent staff. Multiple incumbents may share the same labor pool position number

PCN	Job Class Title	Location	Time Status	Split/Count	Employee Class	Benefit Rate	Annual Budgeted Salary	Annual Benefits	Total Costs	UGF Estimate
540322	Instructional Designer 3	Anchorage	FT		APT - Exempt Employees	39.5%	100		100	-
580011	Communications Specialist 2	Anchorage	FT		PERS - Classified	51.2%	100		100	-
580466	Admin Generalist 2	Anchorage	FT		PERS - Classified	51.2%	100		100	-
580469	IS Net Technician 6	Anchorage	FT		PERS - Classified	51.2%	100		100	-
620058	Term Asst Professor	Anchorage	FT	*	United Academics BU	28.1%	20,579	5,783	26,362	12,840
Pool	Adjunct Faculty	Anchorage	PT	*	Non-Represented Adjunct Faculty	8.9%	1,029,130	113,784	1,142,914	556,665
Pool	Adjunct Faculty	Anchorage	PT	*	UNAD Adjunct Faculty	8.9%	3,451,140	382,032	3,833,172	1,866,974
Pool	UA Labor Pool	Anchorage	PT	*	Labor Pool	0.0%	16,225,343		16,225,343	6,398,369

Total Position Costs 103,500,994 30,279,705 133,780,699 60,761,230

Full Time Positions: 1,191
Part Time Positions: 37
Positions in Component: 1,228

Federal Receipts (1002) 3,772,761
General Fund Receipts (1004) 60,761,230
Interagency Receipts (1007) 737,732
University Receipts (1048) 62,780,253
UA Intra-agency Transfers (1174) 5,728,723
UA Funding 133,780,699