

**State of Alaska  
FY2023 Governor's Operating Budget**

**University of Alaska  
Kenai Peninsula College  
Component Budget Summary**

**Component: Kenai Peninsula College****Contribution to Department's Mission**

Kenai Peninsula College (KPC) is part of the community campus system of the University of Alaska Anchorage, and is comprised of the Kenai River Campus in Soldotna, Kachemak Bay Campus in Homer, and Resurrection Bay Extension Site in Seward. Kenai Peninsula College is committed to excellence in education, training and lifelong learning by offering accessible opportunities in a supportive environment.

**Core Services**

- **Academics:** KPC offers two-year Associate of Arts and Associate of Applied Science degrees, as well as courses leading to technical certificates. Other four-year degree programs are available at KPC via distance delivery through other University of Alaska campuses. KPC also offers the UAA 2-year nursing degree at both campuses.
- **Student Success and Access:** KPC focuses on student success by providing academic advising, transfer information, financial aid assistance, library services, student counseling and advising, and free tutoring. It also serves students needing Adult Basic Education, GED tutoring and testing, English as a Second Language and Literacy instruction.
- **Dual Enrollment:** KPC provides several ways for high school students to earn college credit, including individual admission as a non-degree seeking student, the Middle College School and Career and Technical Education opportunities for post-secondary credit in partnership with the Kenai Peninsula Borough School District (KPBSD), and the JumpStart Program, supported by both the Kenai Peninsula Borough and the KPBSD.
- **Continuing Education and Professional Development:** KPC partners with numerous organizations and agencies to provide professional development opportunities.
- **Community Partnerships:** KPC partners with more than 100 businesses, community groups, organizations and agencies such as the following: KPBSD, Peninsula Job Center, Kenaitze Indian Tribe, Alaska State Parks, Alaska Department of Fish & Game, Cook Inletkeeper, Center for Alaskan Coastal Studies, Icicle Seafoods, Marathon, Homer Soil and Water Conservation District, the Kachemak Bay Land Trust, South Peninsula Hospital, Central Peninsula General Hospital, Homer Marine Trades Association and more.

**Major Component Accomplishments in 2021**

See University of Alaska Anchorage RDU

**Key Component Challenges**

See University of Alaska Anchorage RDU

**Significant Changes in Results to be Delivered in FY2023**

See University of Alaska Anchorage RDU

**Statutory and Regulatory Authority**

No statutes and regulations.

**Contact Information**

**Contact:** Michelle Rizk, Vice President, University Relations  
**Phone:** (907) 450-8187  
**E-mail:** marizk@alaska.edu

Kenai Peninsula College Personal Services Information				
Authorized Positions			Personal Services Costs	
	<u>FY2022</u> <u>Management</u> <u>Plan</u>	<u>FY2023</u> <u>Governor</u>		
Full-time	85	85	Annual Salaries	0
Part-time	5	5	Premium Pay	0
Nonpermanent	0	0	Annual Benefits	0
			<i>Less % Vacancy Factor</i>	( )
			Lump Sum Premium Pay	0
<b>Totals</b>	<b>90</b>	<b>90</b>	<b>Total Personal Services</b>	

Position Classification Summary					
Job Class Title	Anchorage	Fairbanks	Juneau	Others	Total
No personal services.					
<b>Totals</b>	<b>0</b>	<b>0</b>	<b>0</b>	<b>0</b>	<b>0</b>

**Component Detail All Funds**  
**University of Alaska**

**Component:** Kenai Peninsula College (756)  
**RDU:** University of Alaska Anchorage (235)

Non-Formula Component

	FY2021 Actuals	FY2022 Conference Committee	FY2022 Authorized	FY2022 Management Plan	FY2023 Governor	FY2022 Management Plan vs FY2023 Governor	
71000 Personal Services	0.0	0.0	0.0	0.0	10,256.4	10,256.4	100.0%
72000 Travel	0.0	0.0	0.0	0.0	132.5	132.5	100.0%
73000 Services	0.0	0.0	0.0	0.0	3,466.4	3,466.4	100.0%
74000 Commodities	0.0	0.0	0.0	0.0	1,871.7	1,871.7	100.0%
75000 Capital Outlay	0.0	0.0	0.0	0.0	109.0	109.0	100.0%
77000 Grants, Benefits	0.0	0.0	0.0	0.0	361.4	361.4	100.0%
78000 Miscellaneous	0.0	0.0	0.0	0.0	7.0	7.0	100.0%
<b>Totals</b>	<b>0.0</b>	<b>0.0</b>	<b>0.0</b>	<b>0.0</b>	<b>16,204.4</b>	<b>16,204.4</b>	<b>100.0%</b>
<b>Fund Sources:</b>							
1002 Fed Rcpts (Fed)	0.0	0.0	0.0	0.0	1,000.8	1,000.8	100.0%
1004 Gen Fund (UGF)	0.0	0.0	0.0	0.0	6,289.1	6,289.1	100.0%
1007 I/A Rcpts (Other)	0.0	0.0	0.0	0.0	489.3	489.3	100.0%
1048 Univ Rcpt (DGF)	0.0	0.0	0.0	0.0	8,186.7	8,186.7	100.0%
1151 VoTech Ed (DGF)	0.0	0.0	0.0	0.0	170.3	170.3	100.0%
1174 UA I/A (Other)	0.0	0.0	0.0	0.0	68.2	68.2	100.0%
<b>Unrestricted General (UGF)</b>	<b>0.0</b>	<b>0.0</b>	<b>0.0</b>	<b>0.0</b>	<b>6,289.1</b>	<b>6,289.1</b>	<b>100.0%</b>
<b>Designated General (DGF)</b>	<b>0.0</b>	<b>0.0</b>	<b>0.0</b>	<b>0.0</b>	<b>8,357.0</b>	<b>8,357.0</b>	<b>100.0%</b>
<b>Other Funds</b>	<b>0.0</b>	<b>0.0</b>	<b>0.0</b>	<b>0.0</b>	<b>557.5</b>	<b>557.5</b>	<b>100.0%</b>
<b>Federal Funds</b>	<b>0.0</b>	<b>0.0</b>	<b>0.0</b>	<b>0.0</b>	<b>1,000.8</b>	<b>1,000.8</b>	<b>100.0%</b>
<b>Positions:</b>							
Permanent Full Time	0	0	0	0	85	85	100.0%
Permanent Part Time	0	0	0	0	5	5	100.0%
Non Permanent	0	0	0	0	0	0	0.0%

**Component Detail All Funds**  
**University of Alaska**

**Component:** Kenai Peninsula College (756)  
**RDU:** University of Alaska Anchorage CC (699)

Non-Formula Component

	FY2021 Actuals	FY2022 Conference Committee	FY2022 Authorized	FY2022 Management Plan	FY2023 Governor	FY2022 Management Plan vs FY2023 Governor	
71000 Personal Services	9,160.5	10,527.4	10,527.4	10,256.4	0.0	-10,256.4	-100.0%
72000 Travel	1.3	179.0	179.0	132.5	0.0	-132.5	-100.0%
73000 Services	2,254.6	2,425.2	2,425.2	3,466.4	0.0	-3,466.4	-100.0%
74000 Commodities	501.8	2,149.2	2,149.2	1,871.7	0.0	-1,871.7	-100.0%
75000 Capital Outlay	291.7	349.3	349.3	109.0	0.0	-109.0	-100.0%
77000 Grants, Benefits	478.0	585.5	585.5	361.4	0.0	-361.4	-100.0%
78000 Miscellaneous	0.0	82.5	82.5	7.0	0.0	-7.0	-100.0%
<b>Totals</b>	<b>12,687.9</b>	<b>16,298.1</b>	<b>16,298.1</b>	<b>16,204.4</b>	<b>0.0</b>	<b>-16,204.4</b>	<b>-100.0%</b>
<b>Fund Sources:</b>							
1002 Fed Rcpts (Fed)	63.2	1,000.8	1,000.8	1,000.8	0.0	-1,000.8	-100.0%
1004 Gen Fund (UGF)	6,289.1	6,289.1	6,289.1	6,289.1	0.0	-6,289.1	-100.0%
1007 I/A Rcpts (Other)	175.7	489.3	489.3	489.3	0.0	-489.3	-100.0%
1048 Univ Rcpt (DGF)	5,881.9	8,186.7	8,186.7	8,186.7	0.0	-8,186.7	-100.0%
1151 VoTech Ed (DGF)	278.0	264.0	264.0	170.3	0.0	-170.3	-100.0%
1174 UA I/A (Other)	0.0	68.2	68.2	68.2	0.0	-68.2	-100.0%
<b>Unrestricted General (UGF)</b>	<b>6,289.1</b>	<b>6,289.1</b>	<b>6,289.1</b>	<b>6,289.1</b>	<b>0.0</b>	<b>-6,289.1</b>	<b>-100.0%</b>
<b>Designated General (DGF)</b>	<b>6,159.9</b>	<b>8,450.7</b>	<b>8,450.7</b>	<b>8,357.0</b>	<b>0.0</b>	<b>-8,357.0</b>	<b>-100.0%</b>
<b>Other Funds</b>	<b>175.7</b>	<b>557.5</b>	<b>557.5</b>	<b>557.5</b>	<b>0.0</b>	<b>-557.5</b>	<b>-100.0%</b>
<b>Federal Funds</b>	<b>63.2</b>	<b>1,000.8</b>	<b>1,000.8</b>	<b>1,000.8</b>	<b>0.0</b>	<b>-1,000.8</b>	<b>-100.0%</b>
<b>Positions:</b>							
Permanent Full Time	89	89	89	85	0	-85	-100.0%
Permanent Part Time	5	5	5	5	0	-5	-100.0%
Non Permanent	0	0	0	0	0	0	0.0%

**Change Record Detail - Multiple Scenarios with Descriptions**  
**University of Alaska**

**Component:** Kenai Peninsula College (756)  
**RDU:** University of Alaska Anchorage (235)

Scenario/Change Record Title	Trans Type	Totals	Personal Services	Travel	Services	Commodities	Capital Outlay	Grants, Benefits	Miscellaneous	Positions		NP
										PFT	PPT	
***** Changes From FY2022 Conference Committee To FY2022 Authorized *****												
<b>FY2022 Conference Committee</b>												
ConfCom		16,298.1	10,527.4	179.0	2,425.2	2,149.2	349.3	585.5	82.5	89	5	0
1002 Fed Rcpts		1,000.8										
1004 Gen Fund		6,289.1										
1007 I/A Rcpts		489.3										
1048 Univ Rcpt		8,186.7										
1151 VoTech Ed		264.0										
1174 UA I/A		68.2										
<b>Subtotal</b>		<b>16,298.1</b>	<b>10,527.4</b>	<b>179.0</b>	<b>2,425.2</b>	<b>2,149.2</b>	<b>349.3</b>	<b>585.5</b>	<b>82.5</b>	<b>89</b>	<b>5</b>	<b>0</b>

***** Changes From FY2022 Authorized To FY2022 Management Plan *****												
<b>Transfer Technical Vocational Education Program Funds to Align with Distributions</b>												
Trout		-93.7	0.0	0.0	-93.7	0.0	0.0	0.0	0.0	0	0	0
1151 VoTech Ed		-93.7										

Transfers between allocations to reallocate Vocational Technical Funding to FY2022 Programs approved by the UA Workforce Development Committee.

- (\$93.7) - Kenai Peninsula College
- \$12.6 - Kodiak College
- \$155.1 - Matanuska-Susitna College
- (\$85.0) - Bristol Bay Campus
- (\$32.8) - Interior Alaska Campus
- \$206.6 - Kuskokwim Campus
- (\$95.9) - Northwest Campus
- \$19.1 - Juneau Campus
- (\$82.6) - Ketchikan Campus
- (\$3.4) - Sitka Campus

<b>Return Positions Related to General Fund Reduction</b>												
PosAdj		0.0	0.0	0.0	0.0	0.0	0.0	0.0	0.0	-4	0	0

Return positions related to the FY2022 \$4.3M general fund reduction that University management and the Board of Regents have deemed necessary.

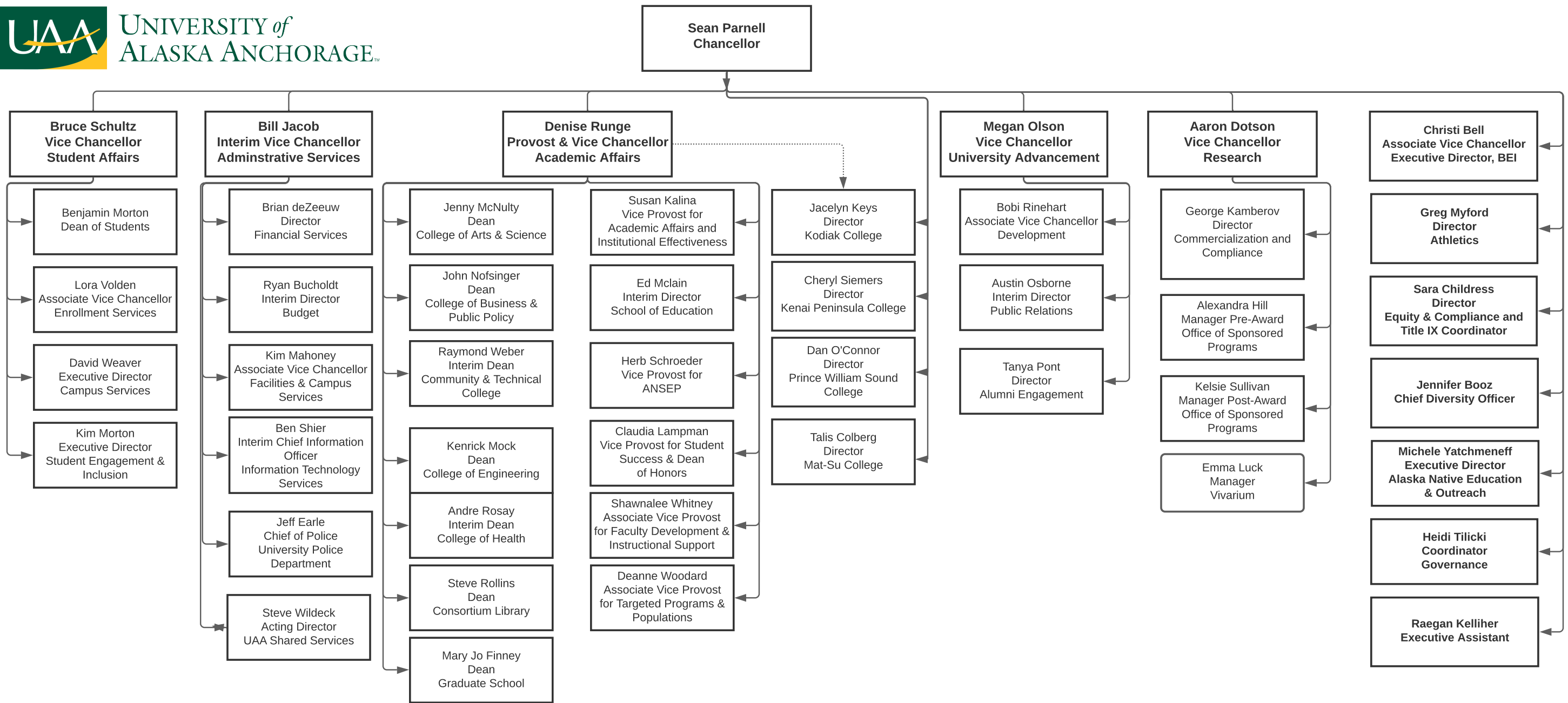
- Full-Time PCN Deletions:
- 72 Anchorage Campus
  - 4 Kenai Peninsula Campus
  - 1 Kodiak College
  - 2 Matanuska Susitna College
  - 7 Sitka Campus

**Change Record Detail - Multiple Scenarios with Descriptions**  
**University of Alaska**

**Component:** Kenai Peninsula College (756)  
**RDU:** University of Alaska Anchorage (235)

Scenario/Change Record Title	Trans Type	Totals	Personal Services	Travel	Services	Commodities	Capital Outlay	Grants, Benefits	Miscellaneous	Positions		NP
										PFT	PPT	
Part-Time PCN Deletions:												
-1 Matanuska Susitna College												
<b>Align Authority with Anticipated Expenditures</b>												
	LIT	0.0	-271.0	-46.5	1,134.9	-277.5	-240.3	-224.1	-75.5	0	0	0
Transfers between expenditure categories that University management and the Board of Regents have deemed necessary to accurately reflect expenditure levels for FY2022												
	<b>Subtotal</b>	<b>16,204.4</b>	<b>10,256.4</b>	<b>132.5</b>	<b>3,466.4</b>	<b>1,871.7</b>	<b>109.0</b>	<b>361.4</b>	<b>7.0</b>	<b>85</b>	<b>5</b>	<b>0</b>
***** <b>Changes From FY2022 Management Plan To FY2023 Governor</b> *****												
	<b>Totals</b>	<b>16,204.4</b>	<b>10,256.4</b>	<b>132.5</b>	<b>3,466.4</b>	<b>1,871.7</b>	<b>109.0</b>	<b>361.4</b>	<b>7.0</b>	<b>85</b>	<b>5</b>	<b>0</b>





Personal Services Expenditure Detail  
University of Alaska

**Component:** Kenai Peninsula College (756)  
**RDU:** University of Alaska Anchorage (235)

Notes:

1. If a position is split, an asterisk (\*) will appear in the Split/Count column. If the split position is also counted in the component, two asterisks (\*\*) will appear in the column.
2. "Pool" PCN refers to UA temporary positions, such as adjunct faculty; student employees; and other non-permanent staff. Multiple incumbents may share the same labor pool position number

PCN	Job Class Title	Location	Time Status	Split/ Count	Employee Class	Benefit Rate	Annual	Annual	Total	UGF
							Budgeted Salary	Benefits	Costs	Estimate
500002	Assistant Professor	Soldotna	FT		United Academics BU	28.1%	56,080	15,758	71,838	31,160
500003	Professor	Soldotna	FT		United Academics BU	28.1%	87,403	24,560	111,963	48,565
500004	Assistant Professor	Soldotna	FT		United Academics BU	28.1%	74,800	21,019	95,819	41,562
500006	Associate Professor	Soldotna	FT		United Academics BU	28.1%	70,996	19,950	90,946	39,448
500007	Assistant Professor	Soldotna	FT		United Academics BU	28.1%	59,412	16,695	76,107	33,012
500008	Term Asst Professor	Soldotna	FT		United Academics BU	28.1%	100		100	-
500010	Associate Professor	Soldotna	FT		United Academics BU	28.1%	90,265	25,364	115,629	50,155
500011	Student Svcs Manager 3	Soldotna	FT		APT - Exempt Employees	39.5%	100		100	-
500013	Assistant Professor	Soldotna	FT		United Academics BU	28.1%	74,607	20,965	95,572	41,455
500014	Assistant Professor	Soldotna	FT		United Academics BU	28.1%	100		100	-
500015	Associate Professor	Soldotna	FT		United Academics BU	28.1%	100		100	-
500017	Associate Professor	Soldotna	FT		United Academics BU	28.1%	71,973	20,224	92,197	39,991
500018	Assistant Professor	Soldotna	FT		United Academics BU	28.1%	76,521	21,502	98,023	42,518
500019	Assistant Professor	Soldotna	FT		United Academics BU	28.1%	59,390	16,689	76,079	32,999
500021	Assistant Professor	Soldotna	FT		United Academics BU	28.1%	100		100	-
500022	Assistant Professor	Soldotna	FT		United Academics BU	28.1%	100		100	-
500023	Associate Professor	Soldotna	FT		United Academics BU	28.1%	109,051	30,643	139,694	60,593
500024	Associate Professor	Soldotna	FT		United Academics BU	28.1%	100		100	-
500026	Instructor	Soldotna	FT		United Academics BU	28.1%	100		100	-
500027	Professor	Soldotna	FT		United Academics BU	28.1%	86,217	24,227	110,444	47,906
500028	Professor	Soldotna	FT		United Academics BU	28.1%	75,277	21,153	96,430	41,827
500030	Professor	Soldotna	FT		United Academics BU	28.1%	84,152	23,647	107,799	46,758
500086	Assistant Professor	Soldotna	FT		United Academics BU	28.1%	57,570	16,177	73,747	-
500105	Administrative Management 4	Soldotna	FT		APT - Exempt Employees	39.5%	123,088	48,620	171,708	74,479
500106	Administrative Management 2	Soldotna	FT		APT - Exempt Employees	39.5%	59,270	23,412	82,682	35,864
500107	Administrative Management 3	Soldotna	FT		APT - Exempt Employees	39.5%	92,242	36,436	128,678	55,815
500108	Comm Specialist 4 (NE)	Soldotna	FT		PERS - Classified	51.2%	58,381	29,891	88,272	38,288
500151	Admin Specialist 3	Soldotna	FT		APT - Exempt Employees	39.5%	54,188	21,404	75,592	32,789
500153	Admin Generalist 4	Soldotna	FT		PERS - Classified	51.2%	38,793	19,862	58,655	25,442
500154	Student Svcs Professional 2	Soldotna	FT		PERS - Classified	51.2%	52,346	26,801	79,147	34,330
500158	Fiscal Technician 3	Soldotna	FT		PERS - Classified	51.2%	47,356	24,246	71,602	31,058
500159	Fiscal Professional 2	Soldotna	FT		APT - Exempt Employees	39.5%	60,740	23,992	84,732	36,753
500160	Fiscal Technician 2	Soldotna	FT		PERS - Classified	51.2%	45,539	23,316	68,855	29,866
500163	Fiscal Technician 3	Soldotna	FT		PERS - Classified	51.2%	49,786	25,490	75,276	13,064
500164	Student Svcs Professional 2	Soldotna	FT		PERS - Classified	51.2%	45,287	23,187	68,474	14,850
500166	Library Technician 3	Soldotna	FT		PERS - Classified	51.2%	22,872	11,710	34,582	15,000

Personal Services Expenditure Detail  
University of Alaska

**Component:** Kenai Peninsula College (756)  
**RDU:** University of Alaska Anchorage (235)

Notes:

1. If a position is split, an asterisk (\*) will appear in the Split/Count column. If the split position is also counted in the component, two asterisks (\*\*) will appear in the column.
2. "Pool" PCN refers to UA temporary positions, such as adjunct faculty; student employees; and other non-permanent staff. Multiple incumbents may share the same labor pool position number

PCN	Job Class Title	Location	Time Status	Split/ Count	Employee Class	Benefit Rate	Annual	Annual	Total	UGF
							Budgeted Salary	Benefits	Costs	Estimate
500170	Student Svcs Professional 2	Soldotna	FT		PERS - Classified	51.2%	54,977	28,148	83,125	36,056
500181	Research Technician 4	Soldotna	FT		PERS - Classified	51.2%	34,544	17,687	52,231	22,655
500184	IS Manager 1	Soldotna	FT		APT - Exempt Employees	39.5%	40,866	16,142	57,008	24,728
500185	Student Svcs Technician 2	Soldotna	FT		PERS - Classified	51.2%	41,614	21,306	62,920	13,646
500186	Associate Professor	Soldotna	FT		United Academics BU	28.1%	56,092	15,762	71,854	31,167
500188	Associate Director/Faculty	Soldotna	FT		Non-Represented Faculty	27.7%	98,750	27,354	126,104	54,698
500189	Associate Professor	Soldotna	FT		United Academics BU	28.1%	71,005	19,952	90,957	39,453
500192	Admin Specialist 1	Soldotna	PT		PERS - Classified	51.2%	19,149	9,804	28,953	12,559
500205	Fiscal Technician 2	Soldotna	FT		PERS - Classified	51.2%	38,223	19,570	57,793	25,068
500206	Fac Svcs-MO&U Supervisor 4	Soldotna	FT		APT - Exempt Employees	39.5%	66,377	26,219	92,596	40,164
500209	Crafts & Trades III (CT3)	Soldotna	FT		AHECTE- Labor Trades & Crafts	51.7%	76,363	39,480	115,843	50,247
500210	Maint Service Worker IV (MSW4)	Soldotna	FT		AHECTE- Labor Trades & Crafts	51.7%	44,215	22,859	67,074	29,094
500216	Admin Specialist 1	Soldotna	FT		PERS - Classified	51.2%	48,337	24,749	73,086	31,701
500220	Admin Generalist 2	Soldotna	FT		PERS - Classified	51.2%	29,340	15,022	44,362	-
500221	Admin Generalist 4	Soldotna	FT		PERS - Classified	51.2%	46,875	24,000	70,875	30,742
500222	IS Net Technician 7	Soldotna	FT		PERS - Classified	51.2%	58,380	29,891	88,271	38,288
500223	Student Svcs Technician 2	Soldotna	FT		PERS - Classified	51.2%	40,382	20,676	61,058	26,484
500224	Fiscal Technician 2	Soldotna	FT		PERS - Classified	51.2%	40,382	20,676	61,058	26,484
500225	Admin Generalist 4	Soldotna	PT		PERS - Classified	51.2%	48,337	24,749	73,086	31,701
500226	Maint Service Workr III (MSW3)	Soldotna	FT		AHECTE- Labor Trades & Crafts	51.7%	100		100	-
500227	Maintenance Serv Worker (MSW1)	Soldotna	FT		AHECTE- Labor Trades & Crafts	51.7%	60,582	31,321	91,903	19,932
500228	Professor	Soldotna	FT		United Academics BU	28.1%	100,494	28,239	128,733	55,838
500300	Instructional Designer 4	Soldotna	FT		APT - Exempt Employees	39.5%	76,316	30,145	106,461	46,178
500301	Assistant Professor	Soldotna	FT		United Academics BU	28.1%	62,620	17,596	80,216	34,794
500302	IS Net Technician 7	Soldotna	FT		PERS - Classified	51.2%	58,380	29,891	88,271	38,288
500303	Instructional Designer 2	Soldotna	FT		PERS - Classified	51.2%	43,120	22,077	65,197	28,280
500304	IS Net Technician 5	Soldotna	FT		PERS - Classified	51.2%	47,356	24,246	71,602	31,058
500305	IS Net Technician 6	Soldotna	FT		PERS - Classified	51.2%	35,349	18,099	53,448	23,183
500306	Student Svcs Professional 3	Soldotna	FT		APT - Exempt Employees	39.5%	100		100	-
500308	Student Svcs Manager 1	Soldotna	FT		APT - Exempt Employees	39.5%	100		100	-
500309	Student Svcs Professional 2	Soldotna	FT		PERS - Classified	51.2%	52,346	26,801	79,147	34,330
500310	Admin Generalist 3	Soldotna	FT		PERS - Classified	51.2%	30,286	15,506	45,792	9,931
500312	Student Svcs Professional 2	Soldotna	PT		PERS - Classified	51.2%	52,346	26,801	79,147	17,165
500313	IS Net Technician 6	Soldotna	FT		PERS - Classified	51.2%	35,976	18,420	54,396	23,594
500314	Admin Generalist 4	Soldotna	FT		PERS - Classified	51.2%	30,534	15,633	46,167	20,025
500315	Training & Development 4	Soldotna	FT		APT - Exempt Employees	39.5%	42,894	16,943	59,837	-

Personal Services Expenditure Detail  
University of Alaska

**Component:** Kenai Peninsula College (756)  
**RDU:** University of Alaska Anchorage (235)

Notes:

1. If a position is split, an asterisk (\*) will appear in the Split/Count column. If the split position is also counted in the component, two asterisks (\*\*) will appear in the column.
2. "Pool" PCN refers to UA temporary positions, such as adjunct faculty; student employees; and other non-permanent staff. Multiple incumbents may share the same labor pool position number

PCN	Job Class Title	Location	Time Status	Split/Count	Employee Class	Benefit Rate	Annual	Annual	Total	UGF	
							Budgeted	Benefits			Costs
500316	Admin Specialist 3	Soldotna	FT		APT - Exempt Employees	39.5%	26,275	10,379	36,654	11,924	
500317	Student Svcs Professional 1	Soldotna	FT		PERS - Classified	51.2%	100		100	-	
500318	Physical Health Provider 3	Soldotna	PT		APT - Exempt Employees	39.5%	27,778	10,972	38,750	-	
500319	Student Svcs Professional 1	Soldotna	FT		PERS - Classified	51.2%	54,455	27,881	82,336	-	
500320	Training & Development 2	Soldotna	FT		PERS - Classified	51.2%	17,520	8,970	26,490	5,754	
500321	Maint Service Workr III (MSW3)	Soldotna	FT		AHECTE- Labor Trades & Crafts	51.7%	42,514	21,980	64,494	27,974	
500322	Student Svcs Technician 2	Soldotna	FT		PERS - Classified	51.2%	25,239	12,922	38,161	16,553	
500323	Library Technician 2	Soldotna	PT		PERS - Classified	51.2%	15,604	7,989	23,593	4,094	
500324	IS Net Technician 5	Soldotna	FT		PERS - Classified	51.2%	54,977	28,148	83,125	36,056	
500477	Assistant Professor	Soldotna	FT		United Academics BU	28.1%	61,612	17,313	78,925	34,234	
500478	Student Svcs Manager 2	Soldotna	FT		APT - Exempt Employees	39.5%	55,743	22,018	77,761	33,729	
500479	Admin Generalist 4	Soldotna	FT		PERS - Classified	51.2%	49,256	25,219	74,475	32,304	
500480	Student Svcs Technician 3	Soldotna	FT		PERS - Classified	51.2%	46,875	24,000	70,875	30,742	
500496	Director (Admin)	Soldotna	FT		Sr. Administrator	27.7%	143,000	39,611	182,611	79,208	
500497	Admin Specialist 3 (NonExempt)	Soldotna	FT		PERS - Classified	51.2%	63,809	32,670	96,479	41,848	
500498	Associate Professor	Soldotna	FT		United Academics BU	28.1%	80,800	22,705	103,505	44,896	
500500	Maint Service Worker II (MSW2)	Soldotna	FT		AHECTE- Labor Trades & Crafts	51.7%	100		100	-	
500501	Student Svcs Professional 2	Soldotna	FT		PERS - Classified	51.2%	49,778	25,486	75,264	-	
Pool	Adjunct Faculty	Soldotna	PT	*	Non-Represented Adjunct Faculty	8.9%	209,717	23,215	232,932	101,035	
Pool	Adjunct Faculty	Soldotna	PT	*	UNAD Adjunct Faculty	8.9%	774,933	85,602	860,535	373,261	
Pool	UA Labor Pool	Soldotna	PT	*	Labor Pool	0.0%	3,039,083		3,039,083	1,261,146	
<b>Total Position Costs</b>							8,406,677	1,849,786	10,256,463	4,117,839	
Full Time Positions:							85				
Part Time Positions:							5				
<b>Positions in Component:</b>							<b>90</b>				
							Federal Receipts (1002)		631,078		
							General Fund Receipts (1004)		4,117,839		
							Interagency Receipts (1007)		320,373		
							University Receipts (1048)		5,142,519		
							UA Intra-agency Transfers (1174)		44,654		
							<b>UA Funding</b>		<b>10,256,463</b>		