

**Department of Administration**  
 Personnel (56)  
 RDU: Centralized Admin Services (13)  
 FY2023 Governor's Budget  
 Position Totals: 87 PFT  
*Director's Office*

02-2001  
 Division Director  
 R27-Juneau-PX  
 PFT

02-2100  
 HR Consultant 6  
 R24-Juneau-CL  
 PFT

02-2108  
 HR Consultant 6  
 R24-Juneau-CL  
 PFT

02-2040  
 Labor Relations  
 Manager  
*Budgeted in Labor  
 Relations component*

18-7654  
 HR Consultant 4  
 R20-Juneau-CL  
 PFT

12-4205  
 Publication Spec 3  
 R19-Juneau-CL  
 PFT

Admin Support

04-1018  
 Admin Ops  
 Manager 1  
 R22-Juneau-CL  
 PFT

Learning &  
 Development

02-2122  
 Training Spec 3  
 R20-Anchorage-CL  
 PFT

02-2101  
 HR Consultant 4  
 R20-Anchorage-CL  
 PFT

25-0059  
 HR Consultant 5  
 R22-Anchorage-CL  
 PFT

Employee  
 Relations-See  
 attached sheets

11-0222  
 HR Consultant 2  
 R18-Juneau-CL  
 PFT

02-2015  
 Admin Assistant 2  
 R14-Juneau-CL  
 PFT

07-1601  
 Training Spec 3  
 R20-Anchorage-CL  
 PFT

Absence  
 Management-See  
 attached sheets

02-2096  
 HR Consultant 5  
 R22-Juneau-CL  
 PFT

Shared with Labor  
 Relations

07-1219  
 HR Consultant 1  
 R16-Juneau-CL  
 PFT

02-2013  
 Office Asst 1  
 R8-Juneau-CL  
 PFT

06-0531  
 HR Consultant 5  
 R22-Juneau-CL  
 PFT

Classification-See  
 attached sheets

02-2052  
 HR Tech 2  
 R14-Anchorage-CL  
 PFT

20-1024  
 HR Consultant 5  
 R22-Anchorage-CL  
 PFT

Equal  
 Employment  
 Opportunity

Employee Planning &  
 Information Center

06-0453  
 HR Tech 1  
 R12-Juneau-CL  
 PFT

02-2118  
 Office Asst 1  
 R8-Juneau-CL  
 PFT

18-7053  
 HR Consultant 4  
 R20-Anchorage-CL  
 PFT

Recruitment-See  
 attached sheets

05-2144  
 State ADA  
 Coordinator  
 R18-Anchorage-CL  
 PFT

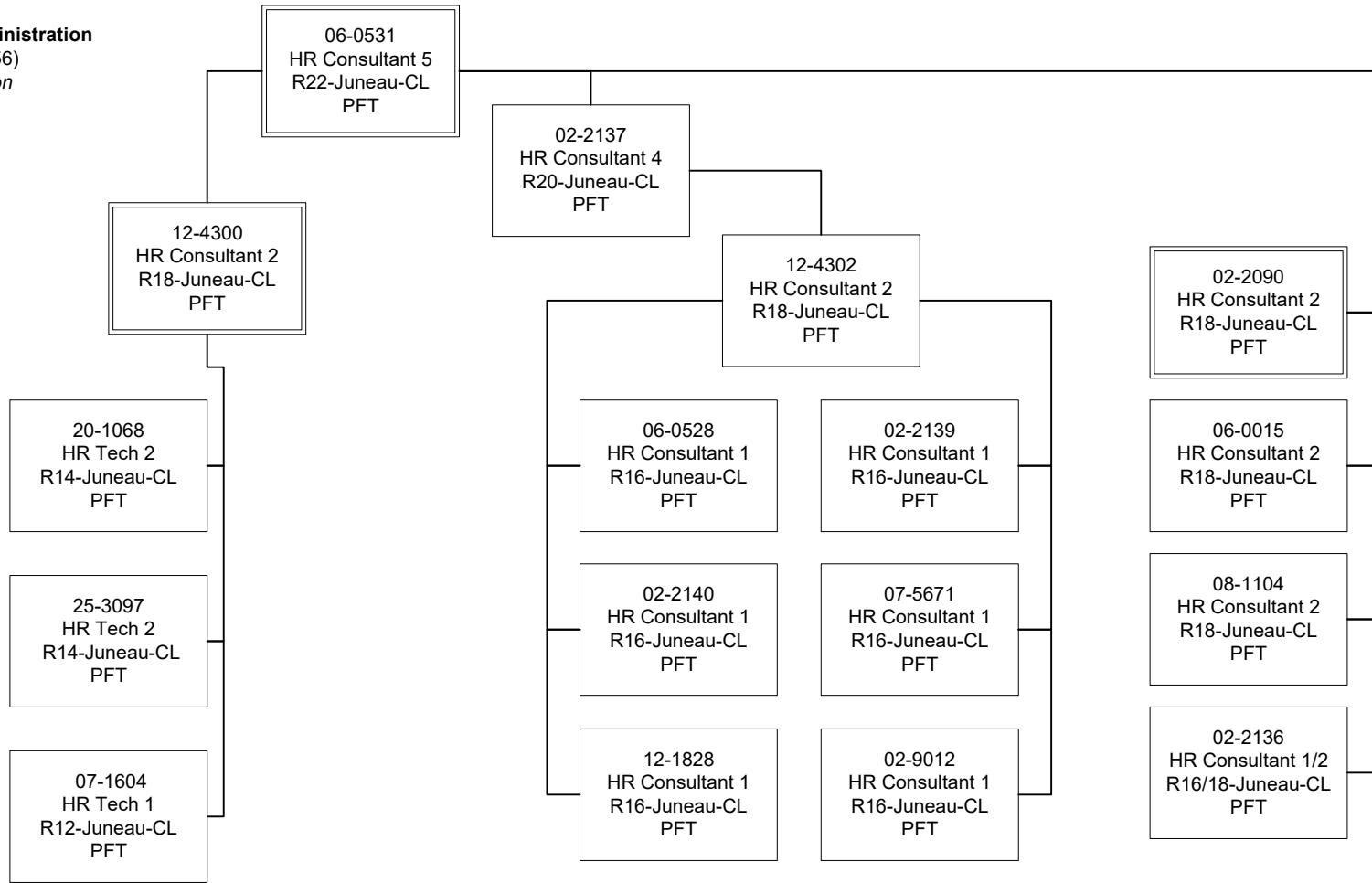
02-1029  
 HR Consultant 2  
 R18-Anchorage-CL  
 PFT

02-6313  
 HR Consultant 2  
 R18-Anchorage-CL  
 PFT

03-0179  
 HR Consultant 1  
 R16-Anchorage-CL  
 PFT

**Department of Administration**

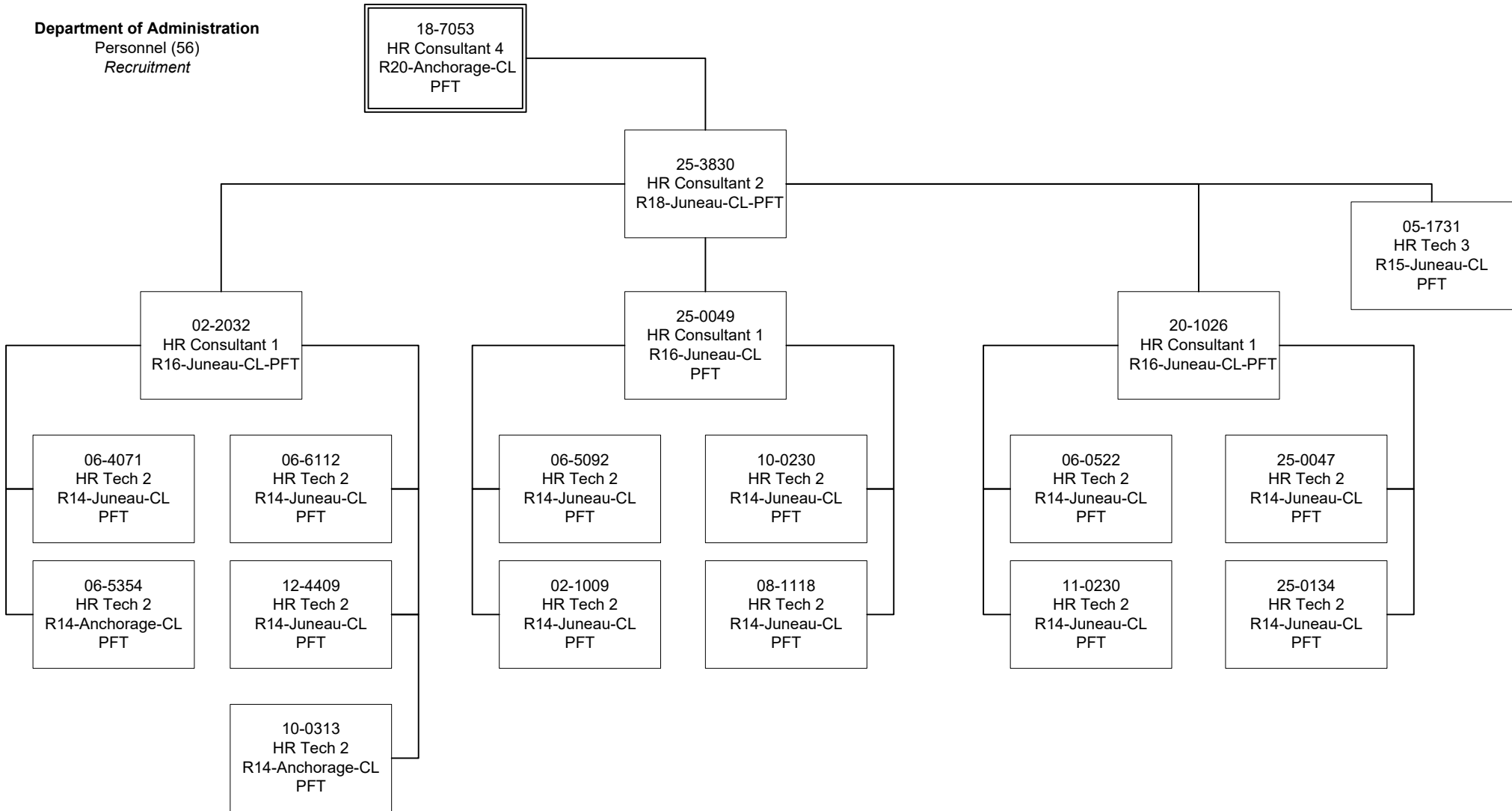
Personnel (56)  
Classification



Class  
Studies

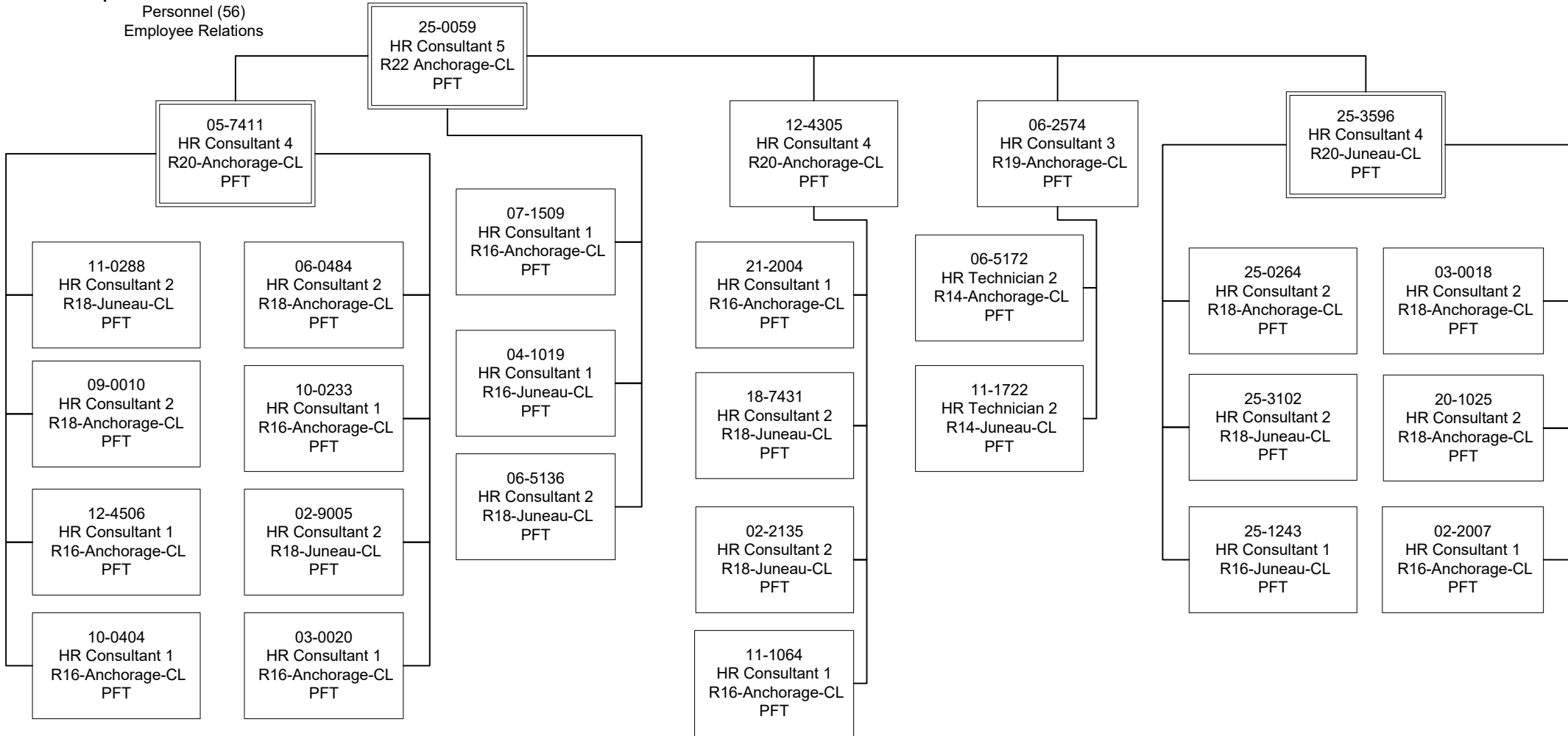
**Department of Administration**

Personnel (56)  
Recruitment



**Department of Administration**

Personnel (56)  
Employee Relations



Department of Administration  
Personnel (56)  
Absence Mangement

