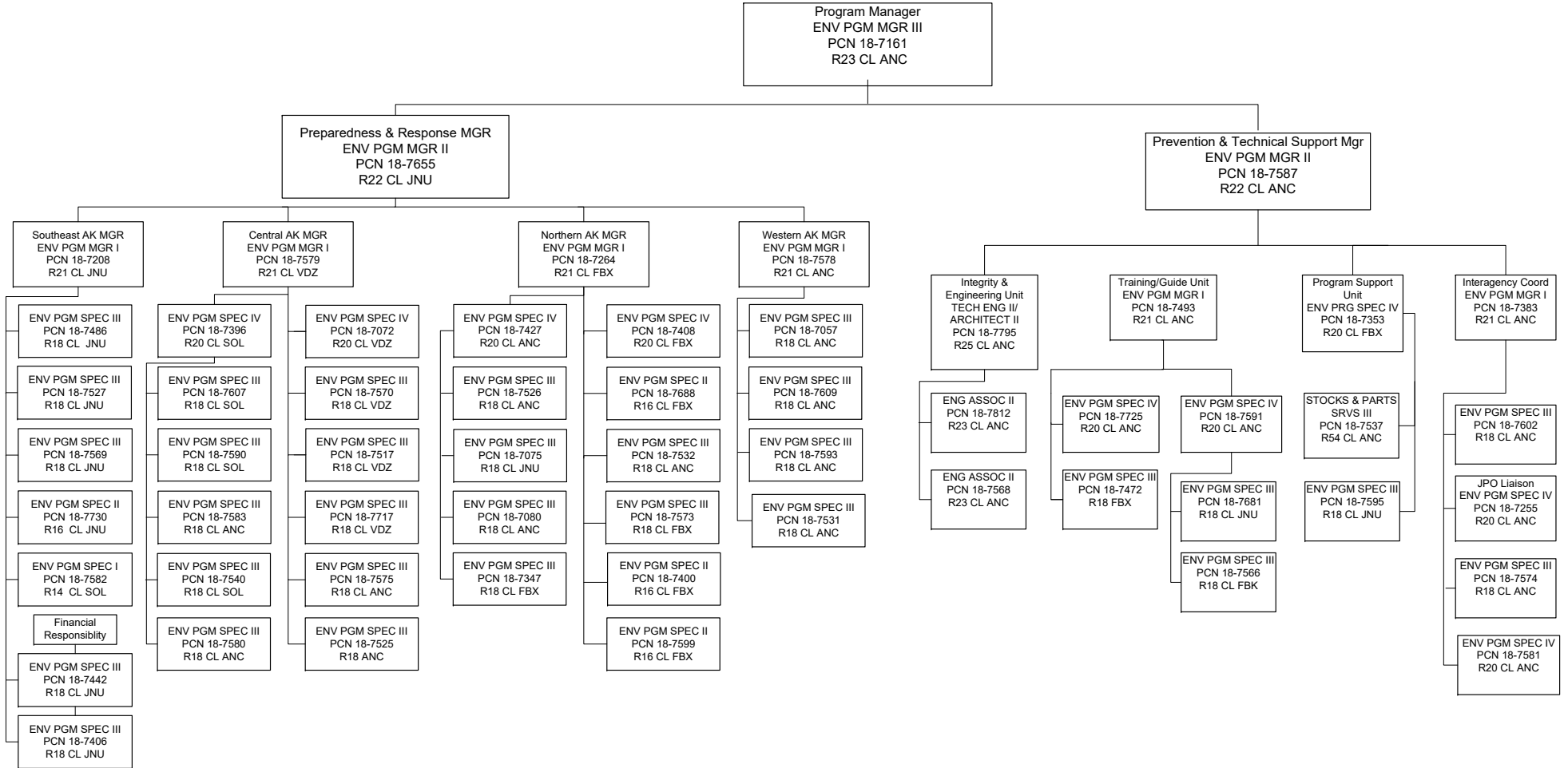


**Department Of Environmental Conservation
 Division of Spill Prevention and Response
 Prevention Preparedness and Response Program**



**Department of Environmental Conservation
Division of Spill Prevention and Response
Contaminated Sites Program**

ENV PGM MGR III
PCN 18-7395
R23 CL JNU

ENV PGM MGR II
PCN 18-7556
R22 CL ANC

ENV PGM MGR I
PCN 18-7421
R21 CL ANC

ENV PGM MGR I
PCN 18-7561
R21 CL FBX

ENV PGM MGR I
PCN 18-7460
R21 CL JNU

ENV PGM MGR I
PCN 18-7550
R21 CL FBX

ENV PGM MGR I
PCN 18-7426
R21 CL HNS

ENV PGM SPEC III
PCN 18-7424
R18 CL ANC

ENV PGM SPEC IV
PCN 18-7668
R20 CL FBX

ENV PGM SPEC III
PCN 18-7528
R18 CL ANC

ENV PGM SPEC III
PCN 18-7473
R18 CL JNU

ENV PGM SPEC III
PCN 18-7533
R18 CL SOL

ENV PGM SPEC III
PCN 18-7515
R18 CL JNU

ENV PGM SPEC III
PCN 18-7719
R18 CL ANC

ENV PGM SPEC IV
PCN 18-7466
R20 CL JNU

ENV PGM SPEC III
PCN 18-7562
R18 CL ANC

ENV PGM SPEC II
PCN 18-7731
R16 CL ANC

ENV PGM SPEC IV
PCN 18-7234
R20 CL ANC

ENV PGM SPEC IV
PCN 18-7117
R20 CL FBK

ENV PGM SPEC III
PCN 18-7563
R18 CL JNU

ENV PGM SPEC III
PCN 18-7557
R18 CL FBK

ENV PGM SPEC IV
PCN 18-7438
R20 CL FBX

ENV PGM SPEC III
PCN 18-7418
R18 CL FBK

ENV PGM SPEC III
PCN 18-7191
R18 CL FBK

ENV PGM SPEC IV
PCN 18-7452
R20 CL FBK

ENV PGM SPEC III
PCN 18-7298
R18 CL JNU

ENV PGM SPEC III
PCN 18-7459
R18 CL FBK

ENV PGM SPEC III
PCN 18-7541
R18 CL SOL

ENV PGM SPEC III
PCN 18-7637
R18 CL FBK

ENV PGM SPEC I
PCN 18-7265
R14 CL ANC

ENV PGM SPEC I/II/III
PCN 18-7108
R14/16/18 CL JNU

ENV PGM SPEC I/II/III
PCN 18-7109
R14/16/18 CL FBX

ENV PGM SPEC IV
PCN 18-7669
R20 CL FBX

ENV PGM SPEC IV
PCN 18-7571
R20 CL FBK

ENV PGM SPEC II
PCN 18-7476
R16 CL FBK

ENV PGM SPEC II
PCN 18-7439
R16 CL FBK

ENV PGM SPEC III
PCN 18-7048
R18 CL ANC

ENV PGM SPEC II
PCN 18-7491
R16 CL FBK

ENV PGM SPEC III
PCN 18-7497
R18 CL FBK

ENV PGM SPEC III
PCN 18-7357
R18 CL ANC

ENV PGM SPEC III
PCN 18-7401
R18 CL ANC

ENV PGM SPEC IV
PCN 18-7682
R20 CL JNU

ENV PGM SPEC IV
PCN 18-7425
R20 CL FBK

ENV PGM SPEC III
PCN 18-7377
R18 CL WAS

ENV PGM TECH
PCN 18-7529
R13 CL WAS

ENV PGM SPEC III
PCN 18-7559
R18 CL SOL

ENV PGM SPEC IV
PCN 18-7384
R20 CL ANC

ENV PGM SPEC I/II/III
PCN 18-7110
R14/16/18 CL ANC

ENV PGM SPEC IV
PCN 18-7640
R20 CL ANC

Pgm Coord I
PCN 18-7086
R18 CL ANC

ENV PGM SPEC III
PCN 18-7169
R18 CL JNU

ENV PGM SPEC IV
PCN 18-7111
R20 CL ANC

**Department of Environmental Conservation
 Division of Spill Prevention and Response
 Response Fund Administration**

