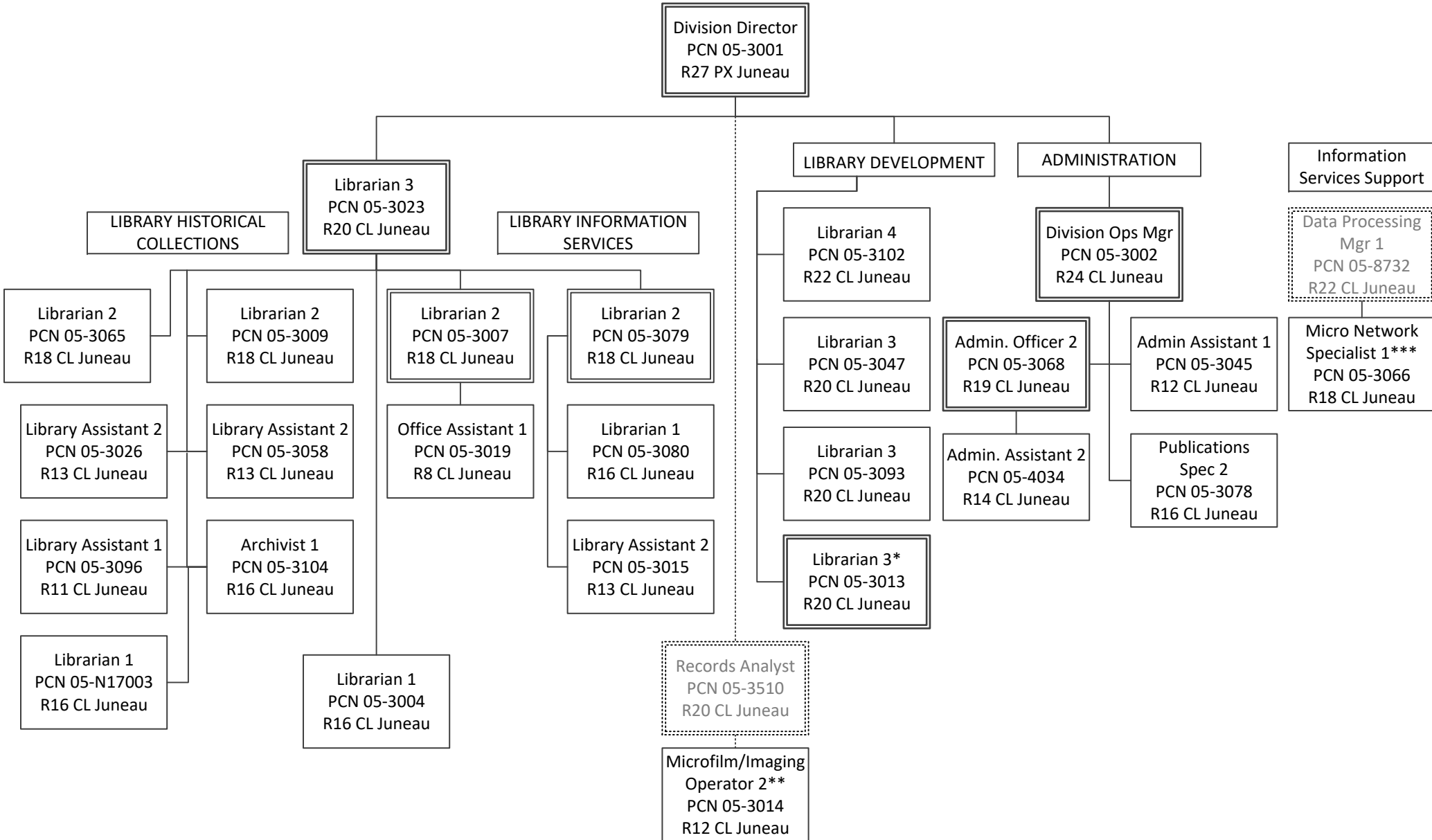


State of Alaska
Department of Education and Early Development
Alaska State Libraries, Archives and Museums
Library Operations (208)
FY2024 Governor Organization Chart



* PCN 05-3013 also supervises PCN 05-3003 in the Online with Libraries (OWL) component.

** PCN 05-3014 is supervised by PCN 05-3510 in the Archives component.

*** PCN 05-3066 is supervised by PCN 05-8732 in the Information Services component.