

# **State of Alaska FY2024 Governor's Operating Budget**

## **Department of Family and Community Services Front Line Social Workers Component Budget Summary**

**Component: Front Line Social Workers****Contribution to Department's Mission**

Provide direct services to carry out the legal mandates of the department to respond to and prevent child maltreatment.

**Core Services**

- Deliver child protective services: investigate protective services reports; crisis intervention; assess families for present and impending danger to children; assess the risk of future harm in families in the absence of intervention; and assess family strengths and needs.
- Develop case plans; assess progress toward achieving case plan goals; initiate legal action to protect children; monitor the implementation of treatment plans; coordinate services.
- Arrange out-of-home care, when appropriate and necessary, in the least restrictive setting; determine when children can be safely returned to their own homes; and arrange alternative permanent placement for children when a return home is not possible.

**Major Component Accomplishments in 2022**

- The Office of Children's Services continues to identify recruitment and retention of front-line staff as an agency priority. Strategies include the implementation of alternate work week letter of agreements to increase staffing levels in remote areas impacted by staffing challenges. The agreements provide for staff to work "one week on, one week off" with assigned duty stations in Anchorage, Wasilla, or Fairbanks where the candidate pools are higher. Staff travel to outlying offices during their "one week on" rotation. Another strategy involves multiple location recruitments that provide for a broader reach of applicants. Recruitment and retention of frontline supervisors has benefited from a more flexible duty station option affording the agency to fill leadership positions with qualified applicants. Supervisors travel to their field offices and provide distance supervision via technology when not on-site.
- The Mentor Program for front line staff was fully implemented. The primary program goal is to develop competencies in new staff as they transition from the classroom into the field. Mentoring continues to be a highlight for front line staff in their first six months of employment.
- The Office of Children's Services launched a Strengthening Investigations and Assessment pilot project in FY2021 in Wasilla, Anchorage, and Fairbanks. The pilot provides for efficiencies including timely documentation and supervisor oversight. Evaluation of the pilot demonstrating positive outcomes and efficiencies supported scaling out the pilot to several more field offices during FY2022.
- The division focused on "essential services" in all areas of front line practice where specific activities are tracked and monitored for better outcomes to children and families.

**Key Component Challenges**

- Workforce recruitment and retention continues to be an ongoing challenge for the Office of Children's Services. The agency is experiencing a turnover rate of 55.5 percent among case carrying staff and a rate of 45.5 percent among all staff. Many exiting staff indicate their top reasons for leaving are workload, lack of competitive salaries, personal safety, and the difficult and traumatic work.
- Employee safety continues to be a top concern for the Office of Children's Services. Many of the front line staff have expressed concern with the COVID-19 pandemic and new challenges that are associated with being a first responder. The staff are threatened with bodily harm and are sometimes physically assaulted by clients. Efforts have been made to improve the physical safety of each field office. In

addition, organizational procedures were developed to respond to violent threats and acts toward staff.

- The Office of Children’s Services’ workforce also continues to be challenged with the lack of appropriate technology resources to do the job effectively and efficiently. Other states’ child welfare programs are vastly more technologically advanced with the use of mobile devices for case management as well as increased connectivity for children, families, foster parents, legal parties, Tribal partners, and other stakeholders.
- Alaska participated in a third Child and Family Services Review in spring 2017. After over two years of negotiation, Alaska’s federally mandated Performance Improvement Plan was approved in June 2019. The Performance Improvement Plan is in place for two years and requires extensive efforts from all levels of the agency with quarterly progress updates to the federal Children’s Bureau to demonstrate practice improvement activities. Due to the challenges of COVID-19 on practice implications and implementing strategies in the program improvement plan, Office of Children’s Services negotiated a year extension of the plan that was approved in 2021. The division will need to continue active efforts in implementing strategies contained within the plan and undergo Federal case review monitoring until December of 2023.

### Significant Changes in Results to be Delivered in FY2024

The Office of Children's Services anticipates improved service delivery related to safety assessment, service planning, and permanency because of the efforts underway to comply with the Program Improvement Plan. Agency efforts towards recruitment and retention of case carrying staff will positively impact the effectiveness of service delivery.

### Statutory and Regulatory Authority

AS 18.05.010-070 Administration of Public Health and Related Laws  
AS 47.05.010 Duties of Department  
AS 47.10 Children in Need of Aid  
AS 47.32 Centralized Licensing and Related Administrative Procedures Personal

Responsibility and Work Opportunity Reconciliation Act of 1996  
Titles IV-A, IV-B, IV-E and XIX of the Social Security Act

Contact Information
<p><b>Contact:</b> Sylvan Robb, Division Director <b>Phone:</b> (907) 465-1630 <b>E-mail:</b> sylvan.robbs@alaska.gov</p>

Front Line Social Workers Personal Services Information					
Authorized Positions			Personal Services Costs		
	FY2023 Management Plan	FY2024 Governor			
Full-time	548	548	Annual Salaries		36,747,979
Part-time	0	0	COLA		1,148,720
Nonpermanent	6	6	Premium Pay		976,660
			Annual Benefits		25,972,350
			Less 6.79% Vacancy Factor		(4,402,509)
			Lump Sum Premium Pay		0
<b>Totals</b>	<b>554</b>	<b>554</b>	<b>Total Personal Services</b>		<b>60,443,200</b>

Position Classification Summary					
Job Class Title	Anchorage	Fairbanks	Juneau	Others	Total
Accounting Technician 1	1	4	0	7	12
Administrative Assistant 2	3	1	1	4	9
Administrative Assistant 3	0	0	0	1	1
Administrative Officer 1	1	0	1	1	3
Administrative Officer 2	0	1	0	1	2
C/C Lic Spec 1	10	4	1	12	27
C/C Lic Spec 2	2	2	0	3	7
C/C Lic Spec 3	1	1	0	0	2
Eligibility Technician 2	5	0	2	5	12
Eligibility Technician 4	1	0	0	1	2
Mental Health Clinician 3	1	0	0	0	1
Mental Health Clinician 4	1	0	0	0	1
Nurse Consultant 1	1	1	0	1	3
Nurse Consultant 2	1	0	0	0	1
Office Assistant 1	8	5	1	2	16
Office Assistant 2	10	1	1	4	16
Office Assistant 3	2	0	0	1	3
Office Assistant 4	0	1	0	0	1
Pro Svcs Sp 2	99	36	13	59	207
Pro Svcs Sp 3	23	2	2	42	69
Pro Svcs Sp 4	24	9	4	19	56
Program Coordinator 2	1	0	0	0	1
Project Assistant	1	0	0	0	1
Protective Services Manager 1	4	2	1	3	10
Protective Services Manager 2	3	0	1	1	5
Research Analyst 3	1	0	0	0	1
Social Services Associate	26	10	4	36	76
Ss Prog Coord	8	0	0	0	8
Ss Prog Ofc	1	0	0	0	1
<b>Totals</b>	<b>239</b>	<b>80</b>	<b>32</b>	<b>203</b>	<b>554</b>

**Component Detail All Funds**  
**Department of Family and Community Services**

**Component:** Front Line Social Workers (3318)  
**RDU:** Children's Services (486)

Non-Formula Component

	FY2022 Actuals	FY2023 Conference Committee	FY2023 Authorized	FY2023 Management Plan	FY2024 Governor	FY2023 Management Plan vs FY2024 Governor	
71000 Personal Services	0.0	64,232.3	64,232.3	59,090.9	60,443.2	1,352.3	2.3%
72000 Travel	0.0	2,071.3	2,071.3	2,071.3	2,071.3	0.0	0.0%
73000 Services	0.0	12,647.2	12,647.2	12,647.2	12,647.2	0.0	0.0%
74000 Commodities	0.0	454.1	454.1	454.1	454.1	0.0	0.0%
75000 Capital Outlay	0.0	0.0	0.0	0.0	0.0	0.0	0.0%
77000 Grants, Benefits	0.0	0.0	0.0	0.0	0.0	0.0	0.0%
78000 Miscellaneous	0.0	0.0	0.0	0.0	0.0	0.0	0.0%
<b>Totals</b>	<b>0.0</b>	<b>79,404.9</b>	<b>79,404.9</b>	<b>74,263.5</b>	<b>75,615.8</b>	<b>1,352.3</b>	<b>1.8%</b>
<b>Fund Sources:</b>							
1002 Fed Rcpts (Fed)	0.0	31,915.1	31,915.1	29,305.9	29,835.0	529.1	1.8%
1003 G/F Match (UGF)	0.0	4,888.6	4,888.6	3,788.6	43,841.1	40,052.5	1057.2%
1004 Gen Fund (UGF)	0.0	42,350.3	42,350.3	40,918.1	1,686.9	-39,231.2	-95.9%
1007 I/A Rcpts (Other)	0.0	30.5	30.5	30.5	30.8	0.3	1.0%
1037 GF/MH (UGF)	0.0	148.5	148.5	148.5	148.5	0.0	0.0%
1108 Stat Desig (Other)	0.0	71.9	71.9	71.9	73.5	1.6	2.2%
<b>Unrestricted General (UGF)</b>	<b>0.0</b>	<b>47,387.4</b>	<b>47,387.4</b>	<b>44,855.2</b>	<b>45,676.5</b>	<b>821.3</b>	<b>1.8%</b>
<b>Designated General (DGF)</b>	<b>0.0</b>	<b>0.0</b>	<b>0.0</b>	<b>0.0</b>	<b>0.0</b>	<b>0.0</b>	<b>0.0%</b>
<b>Other Funds</b>	<b>0.0</b>	<b>102.4</b>	<b>102.4</b>	<b>102.4</b>	<b>104.3</b>	<b>1.9</b>	<b>1.9%</b>
<b>Federal Funds</b>	<b>0.0</b>	<b>31,915.1</b>	<b>31,915.1</b>	<b>29,305.9</b>	<b>29,835.0</b>	<b>529.1</b>	<b>1.8%</b>
<b>Positions:</b>							
Permanent Full Time	0	555	555	548	548	0	0.0%
Permanent Part Time	0	0	0	0	0	0	0.0%
Non Permanent	0	6	6	6	6	0	0.0%

**Change Record Detail - Multiple Scenarios with Descriptions**  
**Department of Family and Community Services**

**Component:** Front Line Social Workers (3318)  
**RDU:** Children's Services (486)

Scenario/Change Record Title	Trans Type	Totals	Personal Services	Travel	Services	Commodities	Capital Outlay	Grants, Benefits	Miscellaneous	Positions		NP
										PFT	PPT	
<b>***** Changes From FY2023 Conference Committee To FY2023 Authorized *****</b>												
<b>FY2023 Conference Committee</b>												
	ConfCom	79,404.9	64,232.3	2,071.3	12,647.2	454.1	0.0	0.0	0.0	555	0	6
1002 Fed Rcpts		31,915.1										
1003 G/F Match		4,888.6										
1004 Gen Fund		42,350.3										
1007 I/A Rcpts		30.5										
1037 GF/MH		148.5										
1108 Stat Desig		71.9										
<b>Subtotal</b>		<b>79,404.9</b>	<b>64,232.3</b>	<b>2,071.3</b>	<b>12,647.2</b>	<b>454.1</b>	<b>0.0</b>	<b>0.0</b>	<b>0.0</b>	<b>555</b>	<b>0</b>	<b>6</b>
<b>***** Changes From FY2023 Authorized To FY2023 Management Plan *****</b>												
<b>Transfer Seven Full-Time Positions to Children's Svcs Management for Centralization Efforts and Field Svcs Support</b>												
	Trout	-475.4	-475.4	0.0	0.0	0.0	0.0	0.0	0.0	-7	0	0
1002 Fed Rcpts		-209.2										
1004 Gen Fund		-266.2										
 Resource families, tribal partners, and case carrying staff have both cited the need for additional support staff and an appreciation for centralized services. Twenty-six positions will be added in Children's Services Management to ensure there are appropriate Social Services Associate and administrative staff ratios to caseworkers, along with staff to support and train co-signers of the Alaska Tribal Child Welfare Compact. These staff will transport children in custody, provide centralized administrative services to eliminate the workload burden on staff on the front line, and assist with training and implementation of the Alaska Tribal Child Welfare Compact.												
 Seven of the 26 positions will be transferred to Children's Services Management from Front Line Social Workers to broaden centralization efforts due to their division-side scope of work and support field services.												
 The following positions are transferred:												
- Full-time Social Services Associate, (26-#033), range 12, located in Anchorage												
- Full-time Social Services Associate, (26-#034), range 12, located in Anchorage												
- Full-time Social Services Associate, (26-#035), range 12, located in Anchorage												
- Full-time Program Coordinator 1, (26-#036), range 18, located in Juneau												
- Full-time Administrative Assistant 3, (26-#037), range 15, located in Anchorage												
- Full-time Administrative Assistant 3, (26-#038), range 15, located in Wasilla												
- Full-time Accounting Technician 1, (26-#039), range 12, located in Juneau												
 <b>Transfer to Support Permanency Goals and Strengthen Families</b>												
	Trout	-4,666.0	-4,666.0	0.0	0.0	0.0	0.0	0.0	0.0	0	0	0
1002 Fed Rcpts		-2,400.0										
1003 G/F Match		-1,100.0										
1004 Gen Fund		-1,166.0										

**Change Record Detail - Multiple Scenarios with Descriptions**  
**Department of Family and Community Services**

**Component:** Front Line Social Workers (3318)  
**RDU:** Children's Services (486)

Scenario/Change Record Title	Trans Type	Totals	Personal Services	Travel	Services	Commodities	Capital Outlay	Grants, Benefits	Miscellaneous	Positions		NP
										PFT	PPT	

General fund match authority is transferred to Family Preservation to allow federal grant awards with state matching requirements to be appropriately funded. Front Line Social Workers has sufficient general fund match authority to meet requirements.

General Fund authority is transferred to Foster Care Base Rate to ensure foster children placed in homes are adequately cared for. Front Line Social Workers has sufficient general fund authority to meet requirements.

Federal authority is transferred to Subsidized Adoptions and Guardianship to support the Office of Children's Services mission of providing permanency and well-being to Alaskan children. There has been an average increase of six percent year-to-year of the past four fiscal years in eligible Title-IV E, Social Services Block Grant, and other federal funding sources utilized to support adoptions and guardianship subsidies. Front Line Social Workers has sufficient federal authority to support its mission.

<b>Subtotal</b>	<b>74,263.5</b>	<b>59,090.9</b>	<b>2,071.3</b>	<b>12,647.2</b>	<b>454.1</b>	<b>0.0</b>	<b>0.0</b>	<b>0.0</b>	<b>548</b>	<b>0</b>	<b>6</b>
-----------------	-----------------	-----------------	----------------	-----------------	--------------	------------	------------	------------	------------	----------	----------

\*\*\*\*\* **Changes From FY2023 Management Plan To FY2024 Governor** \*\*\*\*\*

**Replace General Fund with General Fund Match**

FndChg	0.0	0.0	0.0	0.0	0.0	0.0	0.0	0.0	0	0	0
1003 G/F Match	40,000.0										
1004 Gen Fund	-40,000.0										

Accurately reflect use of general fund match authority as match to federal revenues. Historically general fund has been used to match federal funds, this adjustment will align the appropriate uses of the funds.

**FY2024 PERS Rate Adjustment**

SalAdj	111.5	111.5	0.0	0.0	0.0	0.0	0.0	0.0	0	0	0
1002 Fed Rcpts	43.5										
1003 G/F Match	4.4										
1004 Gen Fund	63.5										
1108 Stat Desig	0.1										

FY2024 PERS rate adjustment to 25.10%: \$111.5

**FY2024 Salary and Health Insurance Increases**

SalAdj	1,240.8	1,240.8	0.0	0.0	0.0	0.0	0.0	0.0	0	0	0
1002 Fed Rcpts	485.6										
1003 G/F Match	48.1										
1004 Gen Fund	705.3										
1007 I/A Rcpts	0.3										
1108 Stat Desig	1.5										

FY2024 Salary and Health Insurance Increases: \$1,240.8

**Change Record Detail - Multiple Scenarios with Descriptions**  
**Department of Family and Community Services**

**Component:** Front Line Social Workers (3318)  
**RDU:** Children's Services (486)

Scenario/Change Record Title	Trans Type	Totals	Personal Services	Travel	Services	Commodities	Capital Outlay	Grants, Benefits	Miscellaneous	Positions			
										PFT	PPT	NP	
FY2024 GGU cost of living increase 2.5%:		\$983.4											
FY2024 SU cost of living increase 1%:		\$115.0											
FY2024 AlaskaCare insurance from \$1,685 to \$1,793 per member per month.:		\$112.6											
FY2024 GGU health insurance increase from \$1,567.50 to \$1,573.50 per member per month.:		\$29.8											
	<b>Totals</b>	<b>75,615.8</b>	<b>60,443.2</b>	<b>2,071.3</b>	<b>12,647.2</b>	<b>454.1</b>	<b>0.0</b>	<b>0.0</b>	<b>0.0</b>	<b>548</b>	<b>0</b>	<b>6</b>	



**Line Item Detail (1676)**  
**Department of Family and Community Services**  
**Travel**

**Component:** Front Line Social Workers (3318)

Line Number	Line Name		FY2022 Actuals	FY2023 Management Plan	FY2024 Governor
2000	Travel		0.0	2,071.3	2,071.3
Object Class	Servicing Agency	Explanation	FY2022 Actuals	FY2023 Management Plan	FY2024 Governor
<b>2000 Travel Detail Totals</b>			<b>0.0</b>	<b>2,071.3</b>	<b>2,071.3</b>
2000	In-State Employee Travel	Travel costs for administrative purposes, departmental meetings, site visits, quality assurance, training, privately owned vehicles, per diem, supervisory visits to offices within the regions, development of child protection resources and case related employee travel.	0.0	1,875.3	1,875.3
2001	In-State Non-Employee Travel	Nonemployee portion of instate travels costs including airfare, lodging, car rental and meals	0.0	10.0	10.0
2002	Out of State Employee Travel	Out of state travel costs to support the statewide implementation of the Family-to-Family services and case related employee travel.	0.0	85.0	85.0
2005	Moving Costs	Moving and re-location costs. Includes the costs associated with moving household goods, travel, temporary lodging, meals, and incidentals.	0.0	100.0	100.0
2006	Other Travel Costs	Cash advance fee	0.0	1.0	1.0

**Line Item Detail (1676)**  
**Department of Family and Community Services**  
**Services**

**Component:** Front Line Social Workers (3318)

Line Number	Line Name		FY2022 Actuals	FY2023 Management Plan	FY2024 Governor
3000	Services		0.0	12,647.2	12,647.2
Object Class	Servicing Agency	Explanation	FY2022 Actuals	FY2023 Management Plan	FY2024 Governor
<b>3000 Services Detail Totals</b>			<b>0.0</b>	<b>12,647.2</b>	<b>12,647.2</b>
3000	Education Services	Conference registration fees, membership dues, employee tuition and other employee training costs.	0.0	3.0	3.0
3002	Legal and Judicial Services	Fees paid for testimony in child protective cases from witnesses such as medical personnel, psychiatrists, and other outside parties.	0.0	6.0	6.0
3003	Information Technology	Software licensing fees and software maintenance costs.	0.0	60.0	60.0
3003	Information Technology	Admin - Department-wide Reimbursable Services Agreement: Department of Administration, Office of Information Technology	0.0	1,800.0	1,233.0
3004	Telecommunications	Communication costs to outside vendors for long distance charges, teleconference fees, data circuits, television, cellular and other wireless phone costs.	0.0	700.0	600.0
3005	Health Services	Services related to Americans with Disabilities Act compliance for workers and family contact spaces within field offices.	0.0	126.9	8.0
3006	Delivery Services	Delivery, freight, postage, and courier costs.	0.0	0.0	75.0
3007	Advertising and Promotions	Cost of advertising for recruitment purposes and to meet legal requirements.	0.0	5.0	5.0

**Line Item Detail (1676)**  
**Department of Family and Community Services**  
**Services**

**Component:** Front Line Social Workers (3318)

Object Class	Servicing Agency	Explanation	FY2022 Actuals	FY2023 Management Plan	FY2024 Governor
<b>3000 Services Detail Totals</b>			<b>0.0</b>	<b>12,647.2</b>	<b>12,647.2</b>
3008	Utilities	Waste disposal costs, recycling, and other utility costs.	0.0	250.0	250.0
3009	Structure/Infrastructure/Land	Miscellaneous services: Janitorial and caretaker services; miscellaneous repairs and maintenance; room, space and structure rentals for meetings and document storage.	0.0	336.1	336.1
3010	Equipment/Machinery	Service contracts for copiers, postage machines.	0.0	50.0	50.0
3011	Other Services	Cost to maintain the Citizens Review Panel and enable the effective evaluation of Office of Children's Services' discharge of Child Protection Services and responsibilities in accordance with child protection standards.	0.0	2,122.7	2,866.6
		Contracts for armed security guards for the regional offices that include Juneau, Anchorage, Wasilla, Fairbanks, and Kenai.			
		Transportation services to maintain school consistency in Fairbanks, Mat-Su, Anchorage and Kenai as required by the Every Student Succeeds Act.			
		Printing and mailing services for placement of notices.			
		Maintenance and operations for ORCA.			
3017	Inter-Agency Information Technology Admin - Department-wide Non-Telecommunications	Reimbursable Services Agreement: Department of Administration,	0.0	500.0	500.0

**Line Item Detail (1676)**  
**Department of Family and Community Services**  
**Services**

**Component:** Front Line Social Workers (3318)

Object Class	Servicing Agency	Explanation	FY2022 Actuals	FY2023 Management Plan	FY2024 Governor
<b>3000 Services Detail Totals</b>			<b>0.0</b>	<b>12,647.2</b>	<b>12,647.2</b>
		Computer Services, Telecom, and Network Services			
3017	Inter-Agency Information Technology Non-Telecommunications	FCS - Commissioner's Office (3304) Reimbursable Services Agreement: Department of Health, Commissioner's Office	0.0	42.0	42.0
3017	Inter-Agency Information Technology Non-Telecommunications	FCS - Front Line Social Workers (3318) Reimbursable Services Agreement: OMB Admin Order 302	0.0	37.0	0.0
3017	Inter-Agency Information Technology Non-Telecommunications	FCS - Information Technology Services (3328) Reimbursable Services Agreement: Department of Health for Business Applications	0.0	700.0	700.0
3017	Inter-Agency Information Technology Non-Telecommunications	FCS - Public Affairs (3329) Reimbursable Services Agreement: Department of Health for Public Affairs	0.0	60.0	60.0
3017	Inter-Agency Information Technology Non-Telecommunications	FCS - Commissioner's Office (3304) Alaska eHealth Network information exchange	0.0	25.0	25.0
3017	Inter-Agency Information Technology Non-Telecommunications	FCS - Information Technology Services (3328) Reimbursable Services Agreement: Department of Health for Online Resource for the Children of Alaska Maintenance and Operations.	0.0	440.6	440.6
3021	Inter-Agency Mail	Admin - Department-wide Reimbursable Services Agreement: Department of Administration. Central mail and postage services.	0.0	38.0	42.0
3022	Inter-Agency Human Resources	Admin - Department-wide Reimbursable Services Agreement: Department of Administration, Centralized Admin Services Human Resources charges	0.0	290.0	290.0
3023	Inter-Agency Building Leases	Admin - Department-wide Reimbursable Services Agreement: Building lease Costs: Petersburg Lease 1673, Dillingham Lease 2209 Bethel Lease 2688, Aniak Lease 2287, Delta Junction Lease 2350,	0.0	2,800.0	2,800.0

**Line Item Detail (1676)**  
**Department of Family and Community Services**  
**Services**

**Component:** Front Line Social Workers (3318)

Object Class	Servicing Agency	Explanation	FY2022 Actuals	FY2023 Management Plan	FY2024 Governor	
<b>3000 Services Detail Totals</b>			<b>0.0</b>	<b>12,647.2</b>	<b>12,647.2</b>	
		Kotzebue Lease 2649, Homer Lease 2465, Utqiagvik Lease 2476, St. Mary's Lease 2484, Sitka Lease 2495, Wasilla Lease 2524, Fairbanks Lease 2531, Craig Lease 2557, Anchorage Lease 2587, Gakona Lease 2640 Juneau Southeast Office, Lease 2647 Lease 8003-2, Griffin Building, Kodiak, Lease 8010, Kenai Combined Facility, Kenai, Lease 8057 Nome State Office Building, Wasilla, A Children's Place				
3023	Inter-Agency Building Leases	Trans - Department-wide	Reimbursable Services Agreement: Lease 8003	0.0	142.0	142.0
3024	Inter-Agency Legal	Law - Department-wide	Reimbursable Services Agreement: Regulations Review and Direct Charge	0.0	400.0	400.0
3025	Inter-Agency Auditing	FCS - Administrative Services (3305)	Reimbursable Services Agreement: Audit Support Services	0.0	9.0	9.0
3026	Inter-Agency Insurance	Admin - Department-wide	Reimbursable Services Agreement: Department of Administration, Division of Risk Management, Insurance.	0.0	75.0	75.0
3027	Inter-Agency Financial	Admin - Department-wide	Reimbursable Services Agreement: Department of Administration, Division of Finance for Integrated Resource Information System and Alaska Data Enterprise Reporting	0.0	150.0	150.0

**Line Item Detail (1676)**  
**Department of Family and Community Services**  
**Services**

**Component:** Front Line Social Workers (3318)

Object Class	Servicing Agency	Explanation	FY2022 Actuals	FY2023 Management Plan	FY2024 Governor
<b>3000 Services Detail Totals</b>			<b>0.0</b>	<b>12,647.2</b>	<b>12,647.2</b>
3028	Inter-Agency Americans with Disabilities Act Compliance	Admin - Department-wide Reimbursable Services Agreement: Department of Administration Centralized Admin Services Americans with Disabilities Act charges to Department of Health and Social Services	0.0	4.5	4.5
3032	Inter-Agency Health	FCS - Administrative Services (3305) Reimbursable Services Agreement: Department of Health, Finance and Management Services department-wide services	0.0	200.0	200.0
3032	Inter-Agency Health	H&SS - Department-wide Reimbursable Services Agreement: Department of Health, Health Care Services, Medical Authority services.	0.0	145.0	145.0
3036	Inter-Agency Safety	PubSaf - Department-wide Reimbursable Services Agreement: Department of Health, Division of Health Care Services for fingerprinting and background check services for resource families.	0.0	7.0	7.0
3037	State Equipment Fleet	Trans - Department-wide Reimbursable Services Agreement: Department of Public Safety, Background Check and Criminal History record checks for newly hired Office of Children's Services Protective Services Specialists	0.0	413.0	413.0
3038	Inter-Agency Management/Consulting	Admin - Department-wide Reimbursable Services Agreement: Department of Administration, Shared Services, Computer Refresh	0.0	160.0	160.0
3038	Inter-Agency Management/Consulting	FCS - Information Technology Services (3328) Reimbursable Services Agreement: Finance and Management Services for Microsoft and Adobe	0.0	42.0	42.0
3038	Inter-Agency	Labor - Department-wide Reimbursable Services Agreement:	0.0	7.4	7.4

**Line Item Detail (1676)**  
**Department of Family and Community Services**  
**Services**

**Component:** Front Line Social Workers (3318)

Object Class	Servicing Agency	Explanation	FY2022 Actuals	FY2023 Management Plan	FY2024 Governor
<b>3000 Services Detail Totals</b>			<b>0.0</b>	<b>12,647.2</b>	<b>12,647.2</b>
	Management/Consulting	Department of Labor. Population estimates demographic support.			
3038	Inter-Agency Management/Consulting	Admin - Department-wide Reimbursable Services Agreement: Department of Administration for Information Technology customer services	0.0	500.0	500.0

**Line Item Detail (1676)**  
**Department of Family and Community Services**  
**Commodities**

**Component:** Front Line Social Workers (3318)

Line Number	Line Name		FY2022 Actuals	FY2023 Management Plan	FY2024 Governor
4000	Commodities		0.0	454.1	454.1
Object Class	Servicing Agency	Explanation	FY2022 Actuals	FY2023 Management Plan	FY2024 Governor
		<b>4000 Commodities Detail Totals</b>	<b>0.0</b>	<b>454.1</b>	<b>454.1</b>
4000	Business	General office supplies necessary to support programs and activities. Includes educational materials, duplicating, copying, and information technology supplies. Also includes office and computer equipment, furniture and tools with a cost or value of less than \$5000	0.0	454.1	454.1



**Revenue Detail (1681)**  
**Department of Family and Community Services**

**Component:** Front Line Social Workers (3318)

<b>Revenue Type (OMB Fund Code)</b> <b>Revenue Source</b>	<b>Component</b>	<b>Comment</b>	<b>FY2022 Actuals</b>	<b>FY2023 Management Plan</b>	<b>FY2024 Governor</b>
<b>5002 Fed Rcpts (1002 Fed Rcpts)</b>			<b>0.0</b>	<b>29,305.9</b>	<b>29,835.0</b>
5019 Federal - Miscellaneous Grants		Title IV-E, Social Services Block Grant, and other federal funding sources determined by the Public Assistance Cost Allocation Plan	0.0	29,305.9	29,835.0
<b>5007 I/A Rcpts (1007 I/A Rcpts)</b>			<b>0.0</b>	<b>30.5</b>	<b>30.8</b>
5301 Inter-Agency Receipts	Courts - Department-wide	Interagency receipt authority for services provided on behalf of other state agencies.	0.0	30.5	30.8
<b>5108 Stat Desig (1108 Stat Desig)</b>			<b>0.0</b>	<b>71.9</b>	<b>73.5</b>
5206 Statutory Designated Program Receipts - Contracts		The City and Borough of Wrangell requested an Office of Children's Services position to help carry the case work.	0.0	71.9	73.5

**Inter-Agency Services (1682)**  
**Department of Family and Community Services**

**Component:** Front Line Social Workers (3318)

	FY2022 Actuals	FY2023 Management Plan	FY2024 Governor
<b>Component Totals</b>	<b>0.0</b>	<b>8,987.5</b>	<b>8,387.5</b>
With Department of Administration	0.0	6,317.5	5,754.5
With Department of Family and Community Services	0.0	1,555.6	1,518.6
With Department of Transportation/Public Facilities	0.0	555.0	555.0
With Department of Law	0.0	400.0	400.0
With Department of Health & Social Services	0.0	145.0	145.0
With Department of Public Safety	0.0	7.0	7.0
With Department of Labor and Workforce Development	0.0	7.4	7.4

<b>Object Class</b>	<b>Servicing Agency</b>	<b>Explanation</b>	FY2022 Actuals	FY2023 Management Plan	FY2024 Governor
3003 Information Technology	Admin - Department-wide	Reimbursable Services Agreement: Department of Administration, Office of Information Technology	0.0	1,800.0	1,233.0
3017 Inter-Agency Information Technology Non-Telecommunications	Admin - Department-wide	Reimbursable Services Agreement: Department of Administration, Computer Services, Telecom, and Network Services	0.0	500.0	500.0
3017 Inter-Agency Information Technology Non-Telecommunications	FCS - Commissioner's Office (3304)	Reimbursable Services Agreement: Department of Health, Commissioner's Office	0.0	42.0	42.0
3017 Inter-Agency Information Technology Non-Telecommunications	FCS - Front Line Social Workers (3318)	Reimbursable Services Agreement: OMB Admin Order 302	0.0	37.0	0.0
3017 Inter-Agency Information Technology Non-Telecommunications	FCS - Information Technology Services (3328)	Reimbursable Services Agreement: Department of Health for Business Applications	0.0	700.0	700.0
3017 Inter-Agency Information Technology Non-Telecommunications	FCS - Public Affairs (3329)	Reimbursable Services Agreement: Department of Health for Public Affairs	0.0	60.0	60.0
3017 Inter-Agency Information Technology Non-Telecommunications	FCS - Commissioner's Office (3304)	Alaska eHealth Network information exchange	0.0	25.0	25.0

**Inter-Agency Services (1682)**  
**Department of Family and Community Services**

**Component:** Front Line Social Workers (3318)

Object Class		Servicing Agency	Explanation	FY2022 Actuals	FY2023 Management Plan	FY2024 Governor
3017	Inter-Agency Information Technology Non-Telecommunications	FCS - Information Technology Services (3328)	Reimbursable Services Agreement: Department of Health for Online Resource for the Children of Alaska Maintenance and Operations.	0.0	440.6	440.6
3021	Inter-Agency Mail	Admin - Department-wide	Reimbursable Services Agreement: Department of Administration. Central mail and postage services.	0.0	38.0	42.0
3022	Inter-Agency Human Resources	Admin - Department-wide	Reimbursable Services Agreement: Department of Administration, Centralized Admin Services Human Resources charges	0.0	290.0	290.0
3023	Inter-Agency Building Leases	Admin - Department-wide	Reimbursable Services Agreement: Building lease Costs: Petersburg Lease 1673, Dillingham Lease 2209 Bethel Lease 2688, Aniak Lease 2287, Delta Junction Lease 2350, Kotzebue Lease 2649, Homer Lease 2465, Utqiagvik Lease 2476, St. Mary's Lease 2484, Sitka Lease 2495, Wasilla Lease 2524, Fairbanks Lease 2531, Craig Lease 2557, Anchorage Lease 2587, Gakona Lease 2640 Juneau Southeast Office, Lease 2647 Lease 8003-2, Griffin Building, Kodiak, Lease 8010, Kenai Combined Facility, Kenai, Lease 8057 Nome State Office Building, Wasilla, A Children's Place	0.0	2,800.0	2,800.0
3023	Inter-Agency Building Leases	Trans - Department-wide	Reimbursable Services Agreement:	0.0	142.0	142.0

**Inter-Agency Services (1682)**  
**Department of Family and Community Services**

**Component:** Front Line Social Workers (3318)

Object Class		Servicing Agency	Explanation	FY2022 Actuals	FY2023 Management Plan	FY2024 Governor
			Lease 8003			
3024	Inter-Agency Legal	Law - Department-wide	Reimbursable Services Agreement: Regulations Review and Direct Charge	0.0	400.0	400.0
3025	Inter-Agency Auditing	FCS - Administrative Services (3305)	Reimbursable Services Agreement: Audit Support Services	0.0	9.0	9.0
3026	Inter-Agency Insurance	Admin - Department-wide	Reimbursable Services Agreement: Department of Administration, Division of Risk Management, Insurance.	0.0	75.0	75.0
3027	Inter-Agency Financial	Admin - Department-wide	Reimbursable Services Agreement: Department of Administration, Division of Finance for Integrated Resource Information System and Alaska Data Enterprise Reporting	0.0	150.0	150.0
3028	Inter-Agency Americans with Disabilities Act Compliance	Admin - Department-wide	Reimbursable Services Agreement: Department of Administration Centralized Admin Services Americans with Disabilities Act charges to Department of Health and Social Services	0.0	4.5	4.5
3032	Inter-Agency Health	FCS - Administrative Services (3305)	Reimbursable Services Agreement: Department of Health, Finance and Management Services department-wide services	0.0	200.0	200.0
3032	Inter-Agency Health	H&SS - Department-wide	Reimbursable Services Agreement: Department of Health, Health Care Services, Medical Authority services.	0.0	145.0	145.0
			Reimbursable Services Agreement: Department of Health, Division of Health Care Services for fingerprinting and background check services for resource families.			
3036	Inter-Agency Safety	PubSaf - Department-wide	Reimbursable Services Agreement: Department of Public Safety,	0.0	7.0	7.0

**Inter-Agency Services (1682)**  
**Department of Family and Community Services**

**Component:** Front Line Social Workers (3318)

<b>Object Class</b>	<b>Servicing Agency</b>	<b>Explanation</b>	<b>FY2022 Actuals</b>	<b>FY2023 Management Plan</b>	<b>FY2024 Governor</b>	
		Background Check and Criminal History record checks for newly hired Office of Children's Services Protective Services Specialists				
3037	State Equipment Fleet	Trans - Department-wide	State Equipment Fleet Service and Fuel Charges	0.0	413.0	413.0
3038	Inter-Agency Management/Consulting	Admin - Department-wide	Reimbursable Services Agreement: Department of Administration, Shared Services, Computer Refresh	0.0	160.0	160.0
3038	Inter-Agency Management/Consulting	FCS - Information Technology Services (3328)	Reimbursable Services Agreement: Finance and Management Services for Microsoft and Adobe	0.0	42.0	42.0
3038	Inter-Agency Management/Consulting	Labor - Department-wide	Reimbursable Services Agreement: Department of Labor. Population estimates demographic support.	0.0	7.4	7.4
3038	Inter-Agency Management/Consulting	Admin - Department-wide	Reimbursable Services Agreement: Department of Administration for Information Technology customer services	0.0	500.0	500.0

**Personal Services Expenditure Detail**  
**Department of Family and Community Services**

**Scenario:** FY2024 Governor (19867)  
**Component:** Front Line Social Workers (3318)  
**RDU:** Children's Services (486)

PCN	Job Class Title	Time Status	Retire Code	Barg Unit	Location	Salary Sched	Range / Step	Comp Months	Split / Count	Annual Salaries	COLA	Premium Pay	Annual Benefits	Total Costs	UGF Amount
06-1351	Research Analyst 3	FT	A	GP	Anchorage	200	18K	12.0		81,686	2,898	0	53,241	137,825	84,073
06-1805	Pro Svcs Sp 2	FT	A	GP	Wasilla	200	17G	12.0		71,019	2,810	8,194	52,205	134,228	81,879
06-3012	C/C Lic Spec 1	FT	A	GP	Bethel	250	16G	12.0		99,684	3,537	0	60,786	164,007	100,044
06-3014	Protective Services Manager 1	FT	A	SS	Fairbanks	203	21K / L	12.0		106,836	1,516	0	66,458	174,810	106,634
06-3015	Protective Services Manager 1	FT	A	SS	Wasilla	200	21K	12.0		102,336	1,452	0	64,572	168,360	102,700
06-3016	Protective Services Manager 1	FT	A	SS	Fairbanks	203	21K / L	12.0		108,683	1,542	0	67,233	177,458	108,249
06-3018	Pro Svcs Sp 4	FT	A	SS	Anchorage	200	20C / D	12.0		82,684	1,195	1,547	56,982	142,408	86,869
06-3019	Pro Svcs Sp 2	FT	A	GP	Anchorage	200	17E / F	12.0		66,935	2,430	1,547	47,706	118,618	72,357
06-3020	Pro Svcs Sp 2	FT	A	GP	Wasilla	200	17A / B	12.0		58,262	2,127	1,697	44,133	106,219	64,794
06-3021	Pro Svcs Sp 2	FT	A	GP	Anchorage	200	17D / E	12.0		65,630	2,592	7,413	49,618	125,253	76,404
06-3022	Pro Svcs Sp 2	FT	A	GP	Anchorage	200	17C / D	9.0		48,189	2,060	9,885	38,594	98,728	60,224
06-3023	Pro Svcs Sp 2	FT	A	GP	Anchorage	200	17C / D	9.0		48,189	2,077	10,348	38,788	99,402	60,635
06-3025	Pro Svcs Sp 2	FT	A	GP	Juneau	205	17A / B	12.0		60,700	2,260	2,987	45,696	111,643	68,102
06-3026	Eligibility Technician 2	FT	A	GP	Anchorage	200	14D / E	12.0		53,164	1,886	0	41,285	96,335	58,764
06-3027	Pro Svcs Sp 2	FT	A	GP	Anchorage	200	17E / F	12.0		67,894	2,491	2,324	48,434	121,143	73,897
06-3029	Pro Svcs Sp 3	FT	A	GP	Ketchikan	200	19A / B	12.0		67,722	2,437	956	47,788	118,903	72,531
06-3030	Social Services Associate	FT	A	GP	Ketchikan	200	12C	12.0		43,953	1,559	0	37,424	82,936	50,591
06-3031	Office Assistant 1	FT	A	GP	Juneau	205	8B / C	12.0		36,174	1,310	758	34,481	72,723	44,361
06-3033	Office Assistant 2	FT	A	GP	Anchorage	200	10B / C	12.0		38,179	1,355	0	35,003	74,537	45,468
06-3034	Pro Svcs Sp 3	FT	A	GP	Dillingham	237	19C / D	9.0		75,670	2,685	0	45,970	124,325	75,838
06-3035	Office Assistant 1	FT	A	GP	Anchorage	200	8E / F	12.0		36,844	1,307	0	34,444	72,595	44,283
06-3036	Accounting Technician 1	FT	A	GP	Fairbanks	203	12C	12.0		45,279	1,606	0	37,980	84,865	51,768
06-3037	Office Assistant 4	FT	A	SS	Fairbanks	603	12C	12.0		48,048	682	0	41,814	90,544	55,232
06-3039	Office Assistant 1	FT	A	GP	Fairbanks	203	8C	9.0		26,661	946	0	25,425	53,032	32,350
06-3042	Pro Svcs Sp 2	FT	A	GP	Anchorage	200	17C / D	9.0		48,189	1,710	0	34,450	84,349	51,453
06-3043	Pro Svcs Sp 2	FT	A	GP	Anchorage	200	17B / C	12.0		59,992	2,129	0	44,147	106,268	64,824
06-3044	Pro Svcs Sp 2	FT	A	GP	Anchorage	200	17C / D	12.0		62,306	2,558	9,784	49,219	123,867	75,559
06-3045	Pro Svcs Sp 2	FT	A	GP	Anchorage	200	17K / L	12.0		78,819	2,822	714	52,339	134,694	82,163
06-3046	Pro Svcs Sp 2	FT	A	GP	Wasilla	200	17B / C	12.0		60,580	2,149	0	44,394	107,123	65,345
06-3047	Pro Svcs Sp 4	FT	A	SS	Fairbanks	203	20A / B	12.0		80,479	1,142	0	55,409	137,030	83,588
06-3048	Pro Svcs Sp 2	FT	A	GP	Juneau	205	17A / B	12.0		62,449	2,216	0	45,177	109,842	67,004
06-3057	Pro Svcs Sp 2	FT	A	GP	Anchorage	200	17C / D	12.0		64,253	2,315	1,000	46,353	113,921	69,492
06-3058	Social Services Associate	FT	A	GP	Dillingham	237	12C / D	12.0		60,864	2,159	0	44,513	107,536	65,597
06-3060	Pro Svcs Sp 4	FT	A	SS	Anchorage	200	20C / D	12.0		82,460	1,170	0	56,240	139,870	85,321
06-3061	Pro Svcs Sp 2	FT	A	GP	Anchorage	200	17F / G	12.0		69,794	2,476	0	48,256	120,526	73,521
06-3062	Office Assistant 2	FT	A	GP	Juneau	205	10B / C	12.0		40,767	1,461	408	36,259	78,895	48,126

Note: If a position is split, an asterisk (\*) will appear in the Split/Count column. If the split position is also counted in the component, two asterisks (\*\*) will appear in this column.  
 [No valid job title] appearing in the Job Class Title indicates that the PCN has an invalid class code or invalid range for the class code effective date of this scenario.

**Personal Services Expenditure Detail**  
**Department of Family and Community Services**

**Scenario:** FY2024 Governor (19867)  
**Component:** Front Line Social Workers (3318)  
**RDU:** Children's Services (486)

PCN	Job Class Title	Time Status	Retire Code	Barg Unit	Location	Salary Sched	Range / Step	Comp Months	Split / Count	Annual Salaries	COLA	Premium Pay	Annual Benefits	Total Costs	UGF Amount
06-3063	Accounting Technician 1	FT	A	GP	Anchorage	200	12C	9.0		32,965	1,170	0	28,068	62,203	37,944
06-3064	Social Services Associate	FT	A	GP	Bethel	250	12E / F	12.0		71,555	2,539	0	48,995	123,089	75,084
06-3065	Pro Svcs Sp 2	FT	A	GP	Juneau	205	17G / J	12.0		77,136	2,805	1,925	52,141	134,007	81,744
06-3066	Pro Svcs Sp 2	FT	A	GP	Fairbanks	203	17B / C	12.0		63,091	2,320	2,302	46,411	114,124	69,616
06-3067	Pro Svcs Sp 2	FT	A	GP	Anchorage	200	17E / F	12.0		68,661	2,472	1,000	48,201	120,334	73,404
06-3069	Pro Svcs Sp 3	FT	A	GP	Juneau	205	19B / C	12.0		73,517	2,608	0	49,817	125,942	76,825
06-3070	Pro Svcs Sp 2	FT	A	GP	Wasilla	200	17C / D	12.0		64,216	2,278	0	45,918	112,412	68,571
06-3072	Pro Svcs Sp 4	FT	A	SS	Anchorage	200	20D / E	12.0		84,469	1,293	6,642	59,866	152,270	92,885
06-3073	Pro Svcs Sp 2	FT	A	GP	Fairbanks	203	17B / C	12.0		63,581	2,505	7,018	48,594	121,698	74,236
06-3074	Protective Services Manager 2	FT	A	SS	Wasilla	200	22K / L	12.0		109,924	1,560	0	67,753	179,237	109,335
06-3076	Pro Svcs Sp 2	FT	A	GP	Anchorage	200	17C / D	12.0		64,253	2,329	1,395	46,518	114,495	69,842
06-3077	C/C Lic Spec 2	FT	A	SS	Wasilla	99	18M / N	12.0		91,188	1,294	0	59,899	152,381	92,952
06-3080	Administrative Assistant 2	FT	A	SS	Kenai	600	14J	12.0		61,194	872	224	47,419	109,709	66,923
06-3082	Office Assistant 2	FT	A	GP	Anchorage	200	10C / D	9.0		30,069	1,067	0	26,854	57,990	35,374
06-3085	Protective Services Manager 1	FT	A	SS	Anchorage	200	21N	12.0		112,632	1,607	633	69,153	184,025	112,255
06-3096	Pro Svcs Sp 4	FT	A	SS	Juneau	205	20F	12.0		94,390	1,459	8,428	64,774	169,051	103,121
06-3098	Pro Svcs Sp 2	FT	A	GP	Anchorage	200	17A / B	12.0		58,481	2,110	1,000	43,933	105,524	64,370
06-3100	Pro Svcs Sp 2	FT	A	GP	Anchorage	200	17C	12.0		62,049	2,201	0	45,010	109,260	66,649
06-3102	Pro Svcs Sp 4	FT	A	SS	Fairbanks	203	20Q / R	12.0		123,490	1,753	0	73,440	198,683	121,197
06-3108	Social Services Associate	FT	A	GP	Juneau	205	12C	9.0		34,617	1,239	312	28,891	65,059	39,686
06-3109	Social Services Associate	FT	A	GP	Kodiak	211	12B / C	12.0		48,223	1,723	348	39,360	89,654	54,689
06-3114	Administrative Officer 2	FT	A	SS	Wasilla	200	19E / F	12.0		82,684	1,173	0	56,334	140,191	85,517
06-3115	Administrative Officer 2	FT	A	SS	Fairbanks	203	19E / F	12.0		86,674	1,230	0	58,006	145,910	89,005
06-3117	Pro Svcs Sp 3	FT	A	GP	Ketchikan	200	19C	9.0		53,264	1,967	2,167	37,486	94,884	57,879
06-3119	C/C Lic Spec 1	FT	A	GP	Anchorage	200	16C / D	12.0		58,208	2,065	0	43,399	103,672	63,240
06-3122	Pro Svcs Sp 2	FT	A	GP	Anchorage	200	17C / D	12.0		64,253	2,287	218	46,025	112,783	68,798
06-3125	Pro Svcs Sp 4	FT	A	SS	Anchorage	200	20E / F	12.0		89,492	1,286	1,154	59,671	151,603	92,478
06-3126	Pro Svcs Sp 4	FT	A	SS	Wasilla	99	20Q	12.0		122,508	1,760	1,503	73,658	199,429	121,652
06-3139	Pro Svcs Sp 4	FT	A	SS	Kenai	200	20C / D	12.0		83,283	1,230	3,379	58,001	145,893	88,995
06-3140	Pro Svcs Sp 2	FT	A	GP	Fairbanks	203	17C	12.0		63,902	2,423	4,383	47,624	118,332	72,183
06-3141	Pro Svcs Sp 2	FT	A	GP	Homer	200	17A / B	12.0		59,445	2,109	0	43,918	105,472	64,338
06-3143	Social Services Associate	FT	A	GP	Kenai	200	12G / J	12.0		50,843	1,808	102	40,355	93,108	56,796
06-3154	Social Services Associate	FT	A	GP	Juneau	205	12B / C	12.0		45,994	1,668	1,020	38,707	87,389	53,307
06-3156	Office Assistant 2	FT	A	GP	Anchorage	200	10B / C	12.0		38,486	1,365	0	35,132	74,983	45,740
06-3159	Pro Svcs Sp 2	FT	A	GP	Fairbanks	203	17B / C	12.0		61,828	2,258	1,820	45,680	111,586	68,068
06-3161	Administrative Assistant 2	FT	A	SS	Anchorage	600	14C / D	12.0		53,795	763	0	44,223	98,781	60,256
06-3164	Office Assistant 1	FT	A	GP	Bethel	250	8C	9.0		38,829	1,472	2,652	31,638	74,591	45,501

Note: If a position is split, an asterisk (\*) will appear in the Split/Count column. If the split position is also counted in the component, two asterisks (\*\*) will appear in this column. [No valid job title] appearing in the Job Class Title indicates that the PCN has an invalid class code or invalid range for the class code effective date of this scenario.

**Personal Services Expenditure Detail**  
**Department of Family and Community Services**

**Scenario:** FY2024 Governor (19867)  
**Component:** Front Line Social Workers (3318)  
**RDU:** Children's Services (486)

PCN	Job Class Title	Time Status	Retire Code	Barg Unit	Location	Salary Sched	Range / Step	Comp Months	Split / Count	Annual Salaries	COLA	Premium Pay	Annual Benefits	Total Costs	UGF Amount
06-3170	Pro Svcs Sp 2	FT	A	GP	Wasilla	200	17C	12.0		62,049	2,201	0	45,010	109,260	66,649
06-3171	Pro Svcs Sp 3	FT	A	GP	Sitka	205	19C	12.0		74,568	2,703	1,606	50,931	129,808	79,183
06-3172	Pro Svcs Sp 3	FT	A	GP	Kotzebue	260	19C / D	12.0		114,153	4,050	0	66,852	185,055	112,884
06-3176	C/C Lic Spec 2	FT	A	SS	Anchorage	99	18M	12.0		92,574	1,314	0	60,480	154,368	94,165
06-3179	Social Services Associate	FT	A	GP	Bethel	250	12C / D	12.0		66,960	2,438	1,762	47,807	118,967	72,570
06-3180	Pro Svcs Sp 3	FT	A	GP	Utqiagvik	250	19C	12.0		106,529	4,216	12,291	68,808	191,844	117,025
06-3182	Pro Svcs Sp 2	FT	A	GP	Fairbanks	203	17C / D	9.0		49,086	1,803	1,734	35,553	88,176	53,787
06-3185	Pro Svcs Sp 2	FT	A	GP	Anchorage	200	17J	12.0		73,944	2,956	9,359	53,919	140,178	85,509
06-3186	Protective Services Manager 1	FT	A	SS	Juneau	205	21P / Q	12.0		129,675	1,840	0	76,032	207,547	126,604
06-3187	Eligibility Technician 2	FT	A	GP	Anchorage	200	14C / D	12.0		50,181	1,780	0	40,035	91,996	56,118
06-3188	Pro Svcs Sp 3	FT	A	GP	Delta Junction	200	19C / D	12.0		72,467	2,591	560	49,612	125,230	76,390
06-3189	Pro Svcs Sp 3	FT	A	GP	King Salmon	250	19K	12.0		130,923	4,645	0	73,882	209,450	127,765
06-3191	Social Services Associate	FT	A	GP	Saint Marys	250	12J	12.0		78,390	2,781	0	51,860	133,031	81,149
06-3192	Pro Svcs Sp 4	FT	A	SS	Ketchikan	200	20B / C	12.0		80,998	1,278	9,030	59,412	150,718	91,938
06-3193	Social Services Associate	FT	A	GP	Bethel	250	12B / C	12.0		65,079	2,331	612	46,536	114,558	69,880
06-3194	Pro Svcs Sp 2	FT	A	GP	Wasilla	200	17B / C	12.0		61,939	2,198	0	44,963	109,100	66,551
06-3195	Pro Svcs Sp 3	FT	A	GP	Petersburg	200	19C	9.0		53,264	2,111	6,234	39,191	100,800	61,488
06-3196	Social Services Associate	FT	A	GP	Fairbanks	203	12L / M	12.0		58,325	2,127	1,632	44,133	106,217	64,792
06-3197	Pro Svcs Sp 2	FT	A	GP	Kenai	200	17D / E	12.0		64,803	2,335	1,000	46,583	114,721	69,980
06-3198	Pro Svcs Sp 4	FT	A	SS	Bethel	250	20C	9.0		91,307	1,371	5,304	56,754	154,736	94,389
06-3200	Pro Svcs Sp 4	FT	A	SS	Fairbanks	203	20E	12.0		89,253	1,267	0	59,087	149,607	91,260
06-3201	Protective Services Manager 1	FT	A	SS	Bethel	250	21J / K	12.0		151,091	2,144	0	85,010	238,245	145,330
06-3202	Pro Svcs Sp 2	FT	A	GP	Wasilla	200	17C / D	12.0		62,288	2,210	0	45,110	109,608	66,861
06-3205	Pro Svcs Sp 3	FT	A	GP	Anchorage	200	19C / D	12.0		73,652	2,613	0	49,874	126,139	76,945
06-3206	Social Services Associate	FT	A	GP	Delta Junction	200	12C	12.0		43,953	1,570	306	37,552	83,381	50,862
06-3213	Pro Svcs Sp 2	FT	A	GP	Juneau	205	17A	9.0		45,411	1,928	8,942	37,034	93,315	56,922
06-3214	Pro Svcs Sp 3	FT	A	GP	Bethel	250	19C	9.0		79,896	2,835	0	47,741	130,472	79,588
06-3216	Pro Svcs Sp 2	FT	A	GP	Anchorage	200	17C	12.0		62,049	2,494	8,244	48,465	121,252	73,964
06-3217	Pro Svcs Sp 2	FT	A	GP	Fairbanks	203	17B / C	12.0		61,998	2,341	3,993	46,662	114,994	70,146
06-3243	Pro Svcs Sp 2	FT	A	GP	Wasilla	200	17B / C	12.0		60,084	2,132	0	44,186	106,402	64,905
06-3265	Eligibility Technician 2	FT	A	GP	Wasilla	200	14L	12.0		64,058	2,273	0	45,852	112,183	68,432
06-3269	Pro Svcs Sp 2	FT	A	GP	Anchorage	200	17F / G	12.0		69,888	2,640	4,524	50,192	127,244	77,619
06-3270	Pro Svcs Sp 2	FT	A	GP	Anchorage	200	17C / D	12.0		64,253	2,319	1,116	46,401	114,089	69,594
06-3271	Pro Svcs Sp 2	FT	A	GP	Fairbanks	203	17C	12.0		63,902	2,463	5,508	48,095	119,968	73,181
06-3278	Eligibility Technician 4	FT	A	SS	Wasilla	200	17F / J	12.0		74,486	1,057	0	52,897	128,440	78,348

Note: If a position is split, an asterisk (\*) will appear in the Split/Count column. If the split position is also counted in the component, two asterisks (\*\*) will appear in this column.  
[No valid job title] appearing in the Job Class Title indicates that the PCN has an invalid class code or invalid range for the class code effective date of this scenario.



**Personal Services Expenditure Detail**  
**Department of Family and Community Services**

**Scenario:** FY2024 Governor (19867)  
**Component:** Front Line Social Workers (3318)  
**RDU:** Children's Services (486)

PCN	Job Class Title	Time Status	Retire Code	Barg Unit	Location	Salary Sched	Range / Step	Comp Months	Split / Count	Annual Salaries	COLA	Premium Pay	Annual Benefits	Total Costs	UGF Amount
06-3350	Pro Svcs Sp 2	FT	A	GP	Fairbanks	203	17C	9.0		47,926	1,805	2,958	35,580	88,269	53,844
06-3354	Pro Svcs Sp 4	FT	A	SS	Anchorage	200	20C / D	12.0		84,157	1,211	1,173	57,443	143,984	87,830
06-3356	Pro Svcs Sp 3	FT	A	GP	Nome	237	19B / C	12.0		94,334	3,792	12,557	63,807	174,490	106,439
06-3365	Pro Svcs Sp 2	FT	A	GP	Wasilla	200	17B / C	12.0		59,901	2,430	8,581	47,706	118,618	72,357
06-3366	C/C Lic Spec 1	FT	A	GP	Anchorage	99	16M / N	12.0		75,789	2,689	0	50,769	129,247	78,841
06-3367	C/C Lic Spec 1	FT	A	GP	Ketchikan	200	16M	12.0		76,167	2,702	0	50,928	129,797	79,176
06-3368	Pro Svcs Sp 4	FT	A	SS	Wasilla	200	20L	12.0		98,946	1,404	0	63,151	163,501	99,736
06-3369	C/C Lic Spec 1	FT	A	GP	Fairbanks	203	16C / D	12.0		60,444	2,166	612	44,593	107,815	65,767
06-3370	C/C Lic Spec 2	FT	A	SS	Ketchikan	200	18B / C	12.0		69,573	1,006	1,326	51,393	123,298	75,212
06-3374	Pro Svcs Sp 2	FT	A	GP	Anchorage	200	17C	9.0		46,537	1,651	0	33,757	81,945	49,987
06-3375	Pro Svcs Sp 3	FT	A	GP	Anchorage	200	19A / B	12.0		66,878	2,373	0	47,034	116,285	70,934
06-3389	Social Services Associate	FT	A	GP	Fairbanks	203	12D / E	12.0		48,302	1,714	0	39,247	89,263	54,450
06-3390	Social Services Associate	FT	A	GP	Anchorage	200	12K	12.0		53,957	1,914	0	41,617	97,488	59,468
06-3398	C/C Lic Spec 1	FT	A	GP	Kenai	200	16G	12.0		66,456	2,394	1,020	47,285	117,155	71,465
06-3402	Pro Svcs Sp 2	FT	A	GP	Juneau	205	17A / B	12.0		61,099	2,168	0	44,611	107,878	65,806
06-3403	Pro Svcs Sp 3	FT	A	GP	Ketchikan	200	19A	12.0		66,456	2,436	2,201	47,780	118,873	72,513
06-3407	Pro Svcs Sp 2	FT	A	GP	Fairbanks	203	17C / D	12.0		63,959	2,269	0	45,810	112,038	68,343
06-3408	Pro Svcs Sp 4	FT	A	SS	Kenai	200	20B / C	12.0		79,750	1,207	5,269	57,313	143,539	87,559
06-3409	Pro Svcs Sp 2	FT	A	GP	Anchorage	200	17C	12.0		62,049	2,513	8,791	48,695	122,048	74,449
06-3411	Pro Svcs Sp 3	FT	A	GP	Wasilla	200	19B / C	12.0		70,171	2,771	7,933	51,740	132,615	80,895
06-3412	Pro Svcs Sp 4	FT	A	SS	Fairbanks	203	20D / E	12.0		89,145	1,342	5,406	61,308	157,201	95,893
06-3417	Pro Svcs Sp 2	FT	A	GP	Anchorage	200	17C / D	12.0		63,004	2,253	510	45,624	111,391	67,949
06-3418	Pro Svcs Sp 3	FT	A	GP	Kotzebue	260	19E / F	12.0		122,193	4,335	0	70,222	196,750	120,018
06-3421	Ss Prog Ofc	FT	A	SS	Anchorage	200	21K / L	12.0		104,832	1,488	0	65,618	171,938	104,882
06-3422	Pro Svcs Sp 2	FT	A	GP	Wasilla	200	17C / D	12.0		63,261	2,245	0	45,518	111,024	67,725
06-3423	Pro Svcs Sp 2	FT	A	GP	Anchorage	200	17N	12.0		84,026	2,981	0	54,222	141,229	86,150
06-3424	Pro Svcs Sp 2	FT	A	GP	Anchorage	200	17C	9.0		46,537	2,048	11,178	38,443	98,206	59,906
06-3425	Pro Svcs Sp 2	FT	A	GP	Anchorage	200	17C / D	9.0		48,189	1,730	561	34,685	85,165	51,951
06-3427	Pro Svcs Sp 2	FT	A	GP	Anchorage	200	17C / D	9.0		48,189	1,710	0	34,450	84,349	51,453
06-3428	Pro Svcs Sp 2	FT	A	GP	Anchorage	200	17C	12.0		62,049	2,201	0	45,010	109,260	66,649
06-3429	Pro Svcs Sp 2	FT	A	GP	Anchorage	200	17B / C	12.0		62,049	2,602	11,277	49,737	125,665	76,656
06-3430	Pro Svcs Sp 4	FT	A	SS	Anchorage	200	20F	12.0		89,898	1,290	1,020	59,785	151,993	92,716
06-3431	Pro Svcs Sp 2	FT	A	GP	Anchorage	200	17G	12.0		71,019	2,520	0	48,770	122,309	74,609
06-3432	Pro Svcs Sp 2	FT	A	GP	Anchorage	200	17C	12.0		62,049	2,201	0	45,010	109,260	66,649
06-3433	Pro Svcs Sp 2	FT	A	GP	Fairbanks	203	17A / B	12.0		60,574	2,149	0	44,391	107,114	65,340
06-3434	Pro Svcs Sp 2	FT	A	GP	Fairbanks	203	17B / C	12.0		62,092	2,297	2,652	46,139	113,180	69,040
06-3436	Pro Svcs Sp 2	FT	A	GP	Fairbanks	203	17C / D	9.0		49,010	1,739	0	34,794	85,543	52,181
06-3449	Social Services Associate	FT	A	GP	Wasilla	200	12B / C	12.0		43,597	1,611	1,813	38,035	85,056	51,884

Note: If a position is split, an asterisk (\*) will appear in the Split/Count column. If the split position is also counted in the component, two asterisks (\*\*) will appear in this column.  
 [No valid job title] appearing in the Job Class Title indicates that the PCN has an invalid class code or invalid range for the class code effective date of this scenario.

**Personal Services Expenditure Detail**  
**Department of Family and Community Services**

**Scenario:** FY2024 Governor (19867)  
**Component:** Front Line Social Workers (3318)  
**RDU:** Children's Services (486)

PCN	Job Class Title	Time Status	Retire Code	Barg Unit	Location	Salary Sched	Range / Step	Comp Months	Split / Count	Annual Salaries	COLA	Premium Pay	Annual Benefits	Total Costs	UGF Amount
06-3462	Pro Svcs Sp 4	FT	A	SS	Utqiagvik	250	20E / F	12.0		131,602	1,888	1,452	77,449	212,391	129,559
06-3465	Pro Svcs Sp 4	FT	A	SS	Juneau	205	20E / F	12.0		93,452	1,378	3,617	62,364	160,811	98,095
06-3547	Social Services Associate	FT	A	GP	Wasilla	200	12C / D	9.0		33,974	1,205	0	28,491	63,670	38,839
06-3586	Administrative Officer 1	FT	A	SS	Anchorage	200	17E / F	12.0		72,105	1,169	10,251	56,196	139,721	85,230
06-3609	Administrative Assistant 2	FT	A	GG	Juneau	99	14N	12.0		69,557	2,468	0	48,157	120,182	73,311
06-3623	Administrative Assistant 2	FT	A	SS	Fairbanks	603	14C / D	12.0		56,781	806	0	45,475	103,062	62,868
06-3642	Pro Svcs Sp 2	FT	A	GP	Anchorage	200	17C	9.0		46,537	1,651	0	33,757	81,945	49,987
06-3663	Administrative Assistant 2	FT	A	SS	Wasilla	600	14A / B	12.0		50,473	716	0	42,831	94,020	57,352
06-3691	Pro Svcs Sp 4	FT	A	SS	Wasilla	200	20E	12.0		86,653	1,341	7,872	61,297	157,163	95,869
06-3708	Pro Svcs Sp 2	FT	A	GP	Juneau	205	17A / B	12.0		62,145	2,354	4,215	46,817	115,531	70,474
06-3710	Pro Svcs Sp 3	FT	A	GP	Ketchikan	200	19C	9.0		53,264	1,990	2,816	37,758	95,828	58,455
06-3712	Pro Svcs Sp 2	FT	A	GP	Anchorage	200	17M	12.0		81,374	2,905	510	53,324	138,113	84,249
06-3715	Pro Svcs Sp 4	FT	A	SS	Anchorage	200	20E / F	12.0		89,898	1,276	0	59,358	150,532	91,825
06-3716	Pro Svcs Sp 2	FT	A	GP	Anchorage	200	17C	12.0		62,049	2,201	0	45,010	109,260	66,649
06-3724	Pro Svcs Sp 4	FT	A	SS	Fairbanks	203	20J / K	12.0		97,017	1,439	4,386	64,181	167,023	101,884
06-3729	Pro Svcs Sp 3	FT	A	GP	Bethel	250	19C	9.0		79,896	2,835	0	47,741	130,472	79,588
06-3730	Office Assistant 1	FT	A	GP	Fairbanks	203	8B / C	12.0		34,615	1,228	0	33,509	69,352	42,305
06-3741	Pro Svcs Sp 2	FT	A	GP	Juneau	205	17C / D	9.0		50,603	1,797	51	35,483	87,934	53,640
06-3743	Pro Svcs Sp 4	FT	A	SS	Ketchikan	200	20B / C	12.0		80,425	1,141	0	55,387	136,953	83,541
06-3744	Pro Svcs Sp 2	FT	A	GP	Wasilla	200	17B / C	12.0		61,461	2,181	0	44,763	108,405	66,127
06-3745	Pro Svcs Sp 2	FT	A	GP	Wasilla	200	17C / D	12.0		63,555	2,377	3,447	47,086	116,465	71,044
06-3746	Pro Svcs Sp 2	FT	A	GP	Anchorage	99	17O / P	12.0		80,638	2,861	0	52,802	136,301	83,144
06-3747	Administrative Assistant 2	FT	A	SS	Anchorage	99	14M	12.0		72,325	1,028	102	52,034	125,489	76,548
06-3748	Social Services Associate	FT	A	GP	Anchorage	200	12B / C	12.0		43,834	1,559	102	37,417	82,912	50,576
06-3749	Pro Svcs Sp 2	FT	A	GP	Fairbanks	203	17B / C	12.0		63,525	2,270	459	45,821	112,075	68,366
06-3750	Social Services Associate	FT	A	GP	Fairbanks	203	12D / E	12.0		47,619	1,690	0	38,961	88,270	53,845
06-3751	Pro Svcs Sp 2	FT	A	GP	Fairbanks	203	17C	9.0		47,926	1,721	586	34,585	84,818	51,739
06-3763	Pro Svcs Sp 2	FT	A	GP	Anchorage	200	17G	12.0		71,019	2,539	547	48,999	123,104	75,093
06-3764	Pro Svcs Sp 2	FT	A	GP	Anchorage	200	17B / C	12.0		60,396	2,161	510	44,530	107,597	65,634
06-3765	Pro Svcs Sp 2	FT	A	GP	Fairbanks	203	17B / C	12.0		62,186	2,445	6,732	47,889	119,252	72,744
06-3766	Pro Svcs Sp 2	FT	A	GP	Fairbanks	203	17C	12.0		63,902	2,395	3,602	47,296	117,195	71,489
06-3767	Pro Svcs Sp 2	FT	A	GP	Kenai	200	17B / C	12.0		61,094	2,168	0	44,609	107,871	65,801
06-3769	Social Services Associate	FT	A	GP	Wasilla	200	12B / C	12.0		43,858	1,556	0	37,384	82,798	50,507
06-3770	Pro Svcs Sp 4	FT	A	SS	Fairbanks	203	20C / D	12.0		85,519	1,230	1,122	57,993	145,864	88,977
06-3771	Administrative Officer 1	FT	A	SS	Juneau	205	17B / C	12.0		69,354	984	0	50,746	121,084	73,861
06-3789	Pro Svcs Sp 2	FT	A	GP	Kenai	200	17C / D	12.0		64,087	2,274	0	45,864	112,225	68,457
06-3790	Pro Svcs Sp 2	FT	A	GP	Kenai	200	17G / J	12.0		73,700	2,666	1,428	50,492	128,286	78,255
06-3792	Protective Services Manager 1	FT	A	SS	Anchorage	200	21F	12.0		95,992	1,389	1,863	62,693	161,937	98,782

Note: If a position is split, an asterisk (\*) will appear in the Split/Count column. If the split position is also counted in the component, two asterisks (\*\*) will appear in this column.  
 [No valid job title] appearing in the Job Class Title indicates that the PCN has an invalid class code or invalid range for the class code effective date of this scenario.

**Personal Services Expenditure Detail**  
**Department of Family and Community Services**

**Scenario:** FY2024 Governor (19867)  
**Component:** Front Line Social Workers (3318)  
**RDU:** Children's Services (486)

PCN	Job Class Title	Time Status	Retire Code	Barg Unit	Location	Salary Sched	Range / Step	Comp Months	Split / Count	Annual Salaries	COLA	Premium Pay	Annual Benefits	Total Costs	UGF Amount
06-3855	Social Services Associate	FT	A	GP	Utqiagvik	250	12C	9.0		49,447	2,129	10,551	39,400	101,527	61,932
06-3856	Office Assistant 1	FT	A	GP	Fairbanks	203	8C	12.0		35,549	1,261	0	33,901	70,711	43,134
06-3857	Social Services Associate	FT	A	GP	Fairbanks	203	12E / F	12.0		49,061	1,952	5,967	42,066	99,046	60,418
06-3858	Administrative Assistant 2	FT	A	GP	Wasilla	200	14J	12.0		60,099	2,165	924	44,579	107,767	65,738
06-3859	Social Services Associate	FT	A	GP	Kenai	200	12B / C	12.0		43,028	1,605	2,217	37,965	84,815	51,737
06-3860	Social Services Associate	FT	A	GP	Gakona	200	12F / G	12.0		48,770	1,740	259	39,552	90,321	55,096
06-3861	Office Assistant 1	FT	A	GP	Bethel	250	8B / C	12.0		50,967	1,839	852	40,721	94,379	57,571
06-3862	Pro Svcs Sp 3	FT	A	GP	Craig	200	19C	9.0		53,264	1,929	1,109	37,042	93,344	56,940
06-3863	Office Assistant 1	FT	A	GP	Anchorage	200	8C / D	12.0		35,568	1,262	0	33,909	70,739	43,151
06-3864	Social Services Associate	FT	A	GP	Juneau	205	12C / D	12.0		47,561	1,720	918	39,321	89,520	54,607
06-3866	Social Services Associate	FT	A	GP	Wasilla	200	12B / C	12.0		42,980	1,576	1,428	37,614	83,598	50,995
06-3867	Accounting Technician 1	FT	A	GP	Fairbanks	203	12B / C	12.0		45,267	1,606	0	37,975	84,848	51,757
06-3869	Pro Svcs Sp 2	FT	A	GP	Anchorage	200	17B / C	12.0		61,131	2,496	9,207	48,484	121,318	74,004
06-3870	Pro Svcs Sp 2	FT	A	GP	Anchorage	200	17B / C	12.0		60,543	2,489	9,608	48,406	121,046	73,838
06-3872	Pro Svcs Sp 2	FT	A	GP	Anchorage	200	17C / D	9.0		48,189	1,748	1,081	34,903	85,921	52,412
06-3873	Pro Svcs Sp 3	FT	A	GP	Juneau	205	19A / B	12.0		69,831	2,546	1,916	49,075	123,368	75,255
06-3875	Pro Svcs Sp 2	FT	A	GP	Anchorage	200	17A / B	12.0		58,062	2,276	6,083	45,888	112,309	68,509
06-3876	Pro Svcs Sp 2	FT	A	GP	Fairbanks	203	17E / F	12.0		68,881	2,444	0	47,874	119,199	72,711
06-3877	Pro Svcs Sp 2	FT	A	GP	Kenai	200	17C / D	9.0		48,189	1,710	0	34,450	84,349	51,453
06-3878	Protective Services Manager 1	FT	A	SS	Anchorage	200	21K	12.0		102,336	1,452	0	64,572	168,360	102,700
06-3879	Pro Svcs Sp 4	FT	A	SS	Anchorage	99	20Q	12.0		115,236	1,699	4,466	71,852	193,253	117,884
06-3880	Pro Svcs Sp 3	FT	A	GP	Bethel	250	19G / J	12.0		122,161	4,334	0	70,209	196,704	119,989
06-3882	Pro Svcs Sp 2	FT	A	GP	Juneau	205	17B / C	12.0		64,550	2,464	4,896	48,110	120,020	73,212
06-3883	C/C Lic Spec 1	FT	A	GP	Anchorage	200	16C / D	12.0		59,846	2,123	0	44,086	106,055	64,694
06-3888	Pro Svcs Sp 2	FT	A	GP	Anchorage	200	17K	12.0		76,343	3,134	11,979	56,023	147,479	89,962
06-3890	Pro Svcs Sp 2	FT	A	GP	Anchorage	200	17C / D	12.0		64,253	2,287	204	46,019	112,763	68,785
06-3891	Pro Svcs Sp 4	FT	A	SS	Anchorage	200	20K	12.0		95,826	1,384	1,683	62,548	161,441	98,479
06-3892	Pro Svcs Sp 2	FT	A	GP	Anchorage	200	17C	9.0		46,537	1,651	0	33,757	81,945	49,987
06-3893	Pro Svcs Sp 3	FT	A	GP	Anchorage	200	19C / D	9.0		55,239	1,960	0	37,405	94,604	57,708
06-3894	Pro Svcs Sp 3	FT	A	GP	Bethel	250	19J	12.0		126,809	4,499	0	72,157	203,465	124,114
06-3895	Pro Svcs Sp 3	FT	A	GP	Bethel	250	19C	9.0		79,896	2,835	0	47,741	130,472	79,588
06-3896	Pro Svcs Sp 3	FT	A	GP	Anchorage	200	19C / D	12.0		71,480	2,572	1,000	49,382	124,434	75,905
06-3897	Pro Svcs Sp 2	FT	A	GP	Juneau	205	17A	12.0		60,548	2,252	2,927	45,607	111,334	67,914
06-3898	Pro Svcs Sp 2	FT	A	GP	Juneau	205	17C	12.0		65,150	2,424	3,162	47,635	118,371	72,206
06-3899	Office Assistant 2	FT	A	GP	Anchorage	200	10B	12.0		37,694	1,337	0	34,800	73,831	45,037
06-3900	Pro Svcs Sp 3	FT	A	GP	Anchorage	200	19K	12.0		87,282	3,125	799	55,922	147,128	89,748
06-3902	C/C Lic Spec 2	FT	A	SS	Fairbanks	203	18L / M	12.0		89,473	1,270	0	59,180	149,923	91,453
06-3903	C/C Lic Spec 1	FT	A	GP	Anchorage	200	16N / O	12.0		79,814	2,832	0	52,457	135,103	82,413

Note: If a position is split, an asterisk (\*) will appear in the Split/Count column. If the split position is also counted in the component, two asterisks (\*\*) will appear in this column. [No valid job title] appearing in the Job Class Title indicates that the PCN has an invalid class code or invalid range for the class code effective date of this scenario.

**Personal Services Expenditure Detail**  
**Department of Family and Community Services**

**Scenario:** FY2024 Governor (19867)  
**Component:** Front Line Social Workers (3318)  
**RDU:** Children's Services (486)

PCN	Job Class Title	Time Status	Retire Code	Barg Unit	Location	Salary Sched	Range / Step	Comp Months	Split / Count	Annual Salaries	COLA	Premium Pay	Annual Benefits	Total Costs	UGF Amount
06-3921	Office Assistant 1	FT	A	GP	Anchorage	200	8B / C	12.0		34,515	1,225	0	33,467	69,207	42,216
06-3922	Pro Svcs Sp 2	FT	A	GP	Anchorage	200	17C / D	12.0		62,655	2,258	1,000	45,683	111,596	68,074
06-3923	Office Assistant 1	FT	A	GP	Anchorage	200	8B / C	12.0		34,269	1,216	0	33,364	68,849	41,998
06-3924	Office Assistant 1	FT	A	GP	Anchorage	200	8E / F	12.0		37,014	1,313	0	34,515	72,842	44,434
06-3926	Pro Svcs Sp 2	FT	A	GP	Anchorage	200	17G / J	12.0		71,263	2,564	1,000	49,291	124,118	75,712
06-3927	Pro Svcs Sp 2	FT	A	GP	Anchorage	200	17B / C	12.0		60,653	2,432	7,905	47,738	118,728	72,424
06-3928	Pro Svcs Sp 4	FT	A	SS	Anchorage	200	20N	12.0		105,498	1,497	0	65,897	172,892	105,464
06-3929	Pro Svcs Sp 2	FT	A	GP	Anchorage	200	17B / C	12.0		61,315	2,462	8,078	48,088	119,943	73,165
06-3930	Pro Svcs Sp 4	FT	A	SS	Anchorage	200	20B / C	12.0		79,668	1,131	0	55,069	135,868	82,880
06-3931	Pro Svcs Sp 2	FT	A	GP	Anchorage	200	17B / C	12.0		61,645	2,589	11,333	49,591	125,158	76,346
06-3932	Pro Svcs Sp 2	FT	A	GP	Anchorage	200	17A / B	12.0		59,664	2,152	1,000	44,429	107,245	65,420
06-3933	Pro Svcs Sp 3	FT	A	GP	Utqiagvik	250	19B / C	12.0		106,529	3,925	4,097	65,373	179,924	109,754
06-3934	Pro Svcs Sp 2	FT	A	GP	Anchorage	200	17J	12.0		73,944	2,649	714	50,295	127,602	77,837
06-3935	Pro Svcs Sp 2	FT	A	GP	Anchorage	200	17F	12.0		68,757	2,721	7,933	51,147	130,558	79,640
06-3936	Pro Svcs Sp 4	FT	A	SS	Anchorage	200	20J	12.0		92,810	1,317	0	60,579	154,706	94,371
06-3937	Ss Prog Coord	FT	A	GP	Anchorage	200	20N	12.0		102,785	3,647	0	62,086	168,518	102,796
06-3938	Social Services Associate	FT	A	GP	Anchorage	200	12D / E	12.0		45,832	1,626	0	38,211	85,669	52,258
06-3939	Social Services Associate	FT	A	GP	Anchorage	200	12E	12.0		46,898	1,677	382	38,818	87,775	53,543
06-3940	Pro Svcs Sp 2	FT	A	GP	Wasilla	200	17J	12.0		73,944	2,624	0	49,996	126,564	77,204
06-3941	Social Services Associate	FT	A	GP	Anchorage	99	12N / O	12.0		59,906	2,131	150	44,174	106,361	64,880
06-3942	Social Services Associate	FT	A	GP	Anchorage	200	12C	9.0		32,965	1,170	0	28,068	62,203	37,944
06-3943	Social Services Associate	FT	A	GP	Anchorage	200	12G / J	12.0		50,489	1,791	0	40,164	92,444	56,391
06-3947	Pro Svcs Sp 3	FT	A	GP	Anchorage	200	19B / C	12.0		70,887	2,890	10,578	53,149	137,504	83,877
06-3950	Pro Svcs Sp 4	FT	A	SS	Fairbanks	203	20D / E	12.0		87,103	1,327	6,426	60,880	155,736	94,999
06-3951	Pro Svcs Sp 4	FT	A	SS	Juneau	205	20K	12.0		100,610	1,428	0	63,848	165,886	101,191
06-3954	Pro Svcs Sp 3	FT	A	GP	Fairbanks	203	19M	12.0		95,823	3,464	1,811	59,927	161,025	98,225
06-3955	Eligibility Technician 2	FT	A	GP	Wasilla	200	14A / B	12.0		47,391	1,681	0	38,865	87,937	53,642
06-3956	Pro Svcs Sp 2	FT	A	GP	Juneau	205	17A / B	12.0		60,909	2,161	0	44,532	107,602	65,637
06-3957	Pro Svcs Sp 2	FT	A	GP	Fairbanks	203	17B / C	12.0		62,299	2,246	1,000	45,534	111,079	67,758
06-3959	Pro Svcs Sp 2	FT	A	GP	Anchorage	200	17J	12.0		73,944	2,926	8,532	53,573	138,975	84,775
06-3960	Pro Svcs Sp 2	FT	A	GP	Anchorage	200	17N	12.0		84,026	3,059	2,193	55,142	144,420	88,096
06-3964	Office Assistant 1	FT	A	GP	Anchorage	200	8C	9.0		25,886	918	0	25,100	51,904	31,661
06-3966	Social Services Associate	FT	A	GP	Ketchikan	200	12C	9.0		32,965	1,170	0	28,068	62,203	37,944
06-3970	Administrative Assistant 2	FT	A	SS	Wasilla	600	14D / E	12.0		56,059	818	1,550	45,822	104,249	63,592
06-3971	Pro Svcs Sp 4	FT	A	SS	Sitka	205	20A	12.0		79,602	1,130	0	55,042	135,774	82,822
06-3976	C/C Lic Spec 1	FT	A	GP	Anchorage	200	16C / D	12.0		59,846	2,123	0	44,086	106,055	64,694
06-3997	Pro Svcs Sp 2	FT	A	GP	Fairbanks	203	17C	12.0		63,902	2,411	4,049	47,484	117,846	71,886
06-3999	Pro Svcs Sp 2	FT	A	GP	Anchorage	200	17A / B	12.0		58,735	2,320	6,653	46,409	114,117	69,611

Note: If a position is split, an asterisk (\*) will appear in the Split/Count column. If the split position is also counted in the component, two asterisks (\*\*) will appear in this column. [No valid job title] appearing in the Job Class Title indicates that the PCN has an invalid class code or invalid range for the class code effective date of this scenario.

**Personal Services Expenditure Detail**  
**Department of Family and Community Services**

**Scenario:** FY2024 Governor (19867)  
**Component:** Front Line Social Workers (3318)  
**RDU:** Children's Services (486)

PCN	Job Class Title	Time Status	Retire Code	Barg Unit	Location	Salary Sched	Range / Step	Comp Months	Split / Count	Annual Salaries	COLA	Premium Pay	Annual Benefits	Total Costs	UGF Amount
06-4009	Accounting Technician 1	FT	A	GP	Wasilla	200	12B / C	12.0		43,028	1,578	1,440	37,640	83,686	51,049
06-4504	Pro Svcs Sp 3	FT	A	GP	Anchorage	200	19C / D	12.0		73,652	2,613	0	49,874	126,139	76,945
06-4505	Protective Services Manager 2	FT	A	SS	Juneau	205	22K	12.0		114,920	1,631	0	69,847	186,398	113,703
06-4506	Protective Services Manager 2	FT	A	SS	Anchorage	200	22K / L	12.0		112,858	1,602	0	68,983	183,443	111,900
06-4507	Protective Services Manager 2	FT	A	SS	Anchorage	200	22L / M	12.0		116,688	1,656	0	70,588	188,932	115,249
06-4513	Pro Svcs Sp 2	FT	A	GP	Anchorage	200	17F / G	12.0		70,699	2,790	7,933	51,961	133,383	81,364
06-4524	C/C Lic Spec 2	FT	A	SS	Fairbanks	203	18K	12.0		86,424	1,227	0	57,902	145,553	88,787
06-4532	Pro Svcs Sp 4	FT	A	SS	Wasilla	200	20B / C	12.0		79,996	1,173	2,652	56,319	140,140	85,485
06-4533	Pro Svcs Sp 2	FT	A	GP	Fairbanks	203	17C / D	12.0		63,940	2,269	0	45,802	112,011	68,327
06-4534	Pro Svcs Sp 2	FT	A	GP	Wasilla	200	17C / D	12.0		64,253	2,589	8,706	49,583	125,131	76,330
06-4535	Pro Svcs Sp 2	FT	A	GP	Kenai	200	17A / B	12.0		58,936	2,091	0	43,705	104,732	63,887
06-4536	Pro Svcs Sp 2	FT	A	GP	Kenai	200	17A / B	12.0		57,771	2,050	0	43,216	103,037	62,853
06-4537	Pro Svcs Sp 4	FT	P	SS	Kenai	200	20F	12.0		89,898	1,311	2,472	60,394	154,075	93,986
06-4538	Pro Svcs Sp 4	FT	A	SS	Anchorage	200	20C	12.0		81,162	1,176	1,734	56,423	140,495	85,702
06-4539	Pro Svcs Sp 2	FT	A	GP	Wasilla	200	17B / C	12.0		59,864	2,173	1,377	44,671	108,085	65,932
06-4540	Pro Svcs Sp 2	FT	A	GP	Anchorage	200	17K	12.0		76,343	2,709	0	51,002	130,054	79,333
06-4541	Pro Svcs Sp 3	FT	A	GP	Anchorage	200	19B / C	12.0		70,077	2,499	357	48,525	121,458	74,089
06-4542	Pro Svcs Sp 2	FT	A	GP	Anchorage	200	17C	12.0		62,049	2,201	0	45,010	109,260	66,649
06-4543	Pro Svcs Sp 2	FT	A	GP	Anchorage	200	17L	12.0		78,819	2,832	1,000	52,459	135,110	82,417
06-4544	Pro Svcs Sp 4	FT	A	SS	Anchorage	200	20C / D	12.0		83,358	1,224	2,884	57,825	145,291	88,628
06-4545	C/C Lic Spec 1	FT	A	GP	Anchorage	200	16C	12.0		57,662	2,046	0	43,171	102,879	62,756
06-4546	Social Services Associate	FT	A	GP	Anchorage	200	12C / D	12.0		44,020	1,562	0	37,452	83,034	50,651
06-4547	Pro Svcs Sp 2	FT	A	GP	Anchorage	200	17E / F	12.0		68,469	2,842	11,646	52,583	135,540	82,679
06-4548	Pro Svcs Sp 4	FT	A	SS	Bethel	250	20C	9.0		91,307	1,375	5,610	56,882	155,174	94,656
06-4549	Pro Svcs Sp 3	FT	A	GP	Anchorage	200	19J / K	12.0		84,762	3,007	0	54,531	142,300	86,803
06-4550	Pro Svcs Sp 3	FT	A	GP	Wasilla	200	19B / C	12.0		69,454	2,529	1,836	48,883	122,702	74,848
06-4551	Pro Svcs Sp 4	FT	A	SS	Fairbanks	99	20Q	12.0		121,602	1,748	1,581	73,311	198,242	120,928
06-4552	Pro Svcs Sp 2	FT	A	GP	Fairbanks	203	17A / B	12.0		61,228	2,405	6,566	47,418	117,617	71,746
06-4553	Pro Svcs Sp 3	FT	A	GP	Fairbanks	203	19C / D	12.0		74,048	2,627	0	50,040	126,715	77,296
06-4554	Pro Svcs Sp 3	FT	A	GP	Anchorage	200	19G / J	12.0		83,970	3,190	5,942	56,690	149,792	91,373
06-4555	Social Services Associate	FT	A	GP	Bethel	250	12C / D	12.0		67,113	2,381	0	47,132	116,626	71,142
06-4556	Pro Svcs Sp 2	FT	A	GP	Fairbanks	203	17N / O	12.0		89,349	3,200	847	56,809	150,205	91,625
06-4557	C/C Lic Spec 1	FT	A	GP	Fairbanks	203	16C / D	12.0		60,668	2,153	0	44,431	107,252	65,424
06-4558	Pro Svcs Sp 2	FT	A	GP	Fairbanks	203	17C	12.0		63,902	2,313	1,280	46,323	113,818	69,429
06-4567	C/C Lic Spec 3	FT	A	SS	Fairbanks	203	20M / N	12.0		107,372	1,524	0	66,683	175,579	107,103
06-4568	Social Services Associate	FT	A	GP	Fairbanks	203	12B	9.0		32,848	1,170	122	28,070	62,210	37,948

Note: If a position is split, an asterisk (\*) will appear in the Split/Count column. If the split position is also counted in the component, two asterisks (\*\*) will appear in this column. [No valid job title] appearing in the Job Class Title indicates that the PCN has an invalid class code or invalid range for the class code effective date of this scenario.

**Personal Services Expenditure Detail**  
**Department of Family and Community Services**

**Scenario:** FY2024 Governor (19867)  
**Component:** Front Line Social Workers (3318)  
**RDU:** Children's Services (486)

PCN	Job Class Title	Time Status	Retire Code	Barg Unit	Location	Salary Sched	Range / Step	Comp Months	Split / Count	Annual Salaries	COLA	Premium Pay	Annual Benefits	Total Costs	UGF Amount
06-4596	Eligibility Technician 2	FT	A	GP	Juneau	205	14B / C	12.0		50,929	1,807	0	40,348	93,084	56,781
06-4600	Pro Svcs Sp 3	FT	A	GP	Kotzebue	260	19A / B	12.0		109,958	3,901	0	65,093	178,952	109,161
06-4601	Nurse Consultant 1	FT	A	GP	Fairbanks	203	24K	12.0		126,770	4,498	0	72,141	203,409	124,080
06-4602	Accounting Technician 1	FT	A	GP	Wasilla	200	12A / B	12.0		41,632	1,503	734	36,758	80,627	49,183
06-4603	Nurse Consultant 1	FT	A	GP	Anchorage	200	24C / D	12.0		101,441	3,599	0	61,523	166,563	101,603
06-4604	Nurse Consultant 1	FT	A	GP	Wasilla	200	24G	12.0		114,446	4,061	0	66,974	185,481	113,143
06-4605	Office Assistant 1	FT	A	GP	Fairbanks	203	8M / N	12.0		47,460	1,684	0	38,894	88,038	53,703
06-4606	Nurse Consultant 2	FT	A	SS	Anchorage	200	26C / D	12.0		120,703	1,713	0	72,271	194,687	118,759
06-4607	Office Assistant 2	FT	A	GP	Anchorage	200	10C	12.0		38,961	1,382	0	35,331	75,674	46,161
06-4608	Accounting Technician 1	FT	A	GP	Wasilla	200	12B / C	12.0		43,858	1,608	1,474	38,002	84,942	51,815
06-4621	Social Services Associate	FT	A	GP	Anchorage	99	12P	12.0		63,462	2,252	0	45,602	111,316	67,903
06-4622	Social Services Associate	FT	A	GP	Anchorage	200	12B / C	12.0		43,739	1,552	0	37,334	82,625	50,401
06-4623	Social Services Associate	FT	A	GP	Anchorage	200	12C / D	12.0		44,357	1,574	0	37,593	83,524	50,950
06-4624	Project Assistant	FT	A	SS	Anchorage	600	16N / O	12.0		79,960	1,135	0	55,192	136,287	83,135
06-4626	Pro Svcs Sp 4	FT	A	SS	Anchorage	200	20F	12.0		89,898	1,315	2,730	60,502	154,445	94,212
06-4627	Pro Svcs Sp 2	FT	A	GP	Anchorage	200	17C / D	9.0		48,189	1,724	408	34,621	84,942	51,815
06-4628	Pro Svcs Sp 2	FT	A	GP	Anchorage	200	17C / D	9.0		48,189	1,860	4,234	36,225	90,508	55,210
06-4629	Pro Svcs Sp 2	FT	A	GP	Anchorage	200	17E / F	12.0		67,070	2,755	10,582	51,550	131,957	80,494
06-4630	Pro Svcs Sp 2	FT	A	GP	Anchorage	200	17C	9.0		46,537	1,651	0	33,757	81,945	49,987
06-4631	Pro Svcs Sp 2	FT	A	GP	Anchorage	200	17L / M	12.0		81,267	2,883	0	53,066	137,216	83,702
06-4632	Pro Svcs Sp 2	FT	A	GP	Anchorage	200	17C / D	9.0		48,189	1,745	1,000	34,869	85,803	52,340
06-4633	Protective Services Manager 1	FT	A	SS	Anchorage	200	21F	12.0		95,992	1,362	0	61,912	159,266	97,152
06-4634	Pro Svcs Sp 2	FT	A	GP	Kenai	200	17C / D	12.0		64,161	2,648	10,478	50,287	127,574	77,820
06-4638	Accounting Technician 1	FT	A	GP	Fairbanks	203	12F / G	12.0		50,574	1,794	0	40,199	92,567	56,466
06-4639	Office Assistant 2	FT	A	GP	Fairbanks	203	10E / F	12.0		43,579	1,546	0	37,267	82,392	50,259
06-4640	Administrative Assistant 2	FT	A	SS	Anchorage	600	14B / C	12.0		51,510	731	0	43,266	95,507	58,259
06-4641	Administrative Assistant 3	FT	A	SS	Wasilla	600	15F / J	12.0		64,940	961	2,746	50,047	118,694	72,403
06-4642	Mental Health Clinician 3	FT	A	GP	Anchorage	200	21C / D	12.0		84,123	2,985	0	54,263	141,371	86,236
06-4644	Eligibility Technician 2	FT	A	GP	Wasilla	200	14G / J	12.0		57,966	2,057	0	43,298	103,321	63,026
06-4645	Eligibility Technician 2	FT	A	GP	Anchorage	200	14J	12.0		60,099	2,132	0	44,192	106,423	64,918
06-4646	Eligibility Technician 2	FT	A	GP	Juneau	205	14M	12.0		69,459	2,475	306	48,244	120,484	73,495
06-4647	Eligibility Technician 2	FT	A	GP	Wasilla	200	14A / B	12.0		47,204	1,675	0	38,787	87,666	53,476
06-4648	Pro Svcs Sp 2	FT	A	GP	Kenai	200	17B / C	12.0		59,992	2,455	9,207	48,007	119,661	72,993
06-4649	Pro Svcs Sp 3	FT	A	GP	Bethel	250	19C	12.0		106,529	3,780	0	63,656	173,965	106,119
06-4650	Pro Svcs Sp 3	FT	A	GP	Bethel	250	19C	9.0		79,896	3,222	10,924	52,321	146,363	89,281
06-4651	Pro Svcs Sp 2	FT	A	GP	Wasilla	200	17E / F	12.0		67,300	2,388	0	47,211	116,899	71,308
06-4652	Pro Svcs Sp 3	FT	A	GP	Wasilla	200	19G / J	12.0		84,392	3,030	1,020	54,803	143,245	87,380
06-4653	C/C Lic Spec 1	FT	A	GP	Wasilla	200	16A / B	12.0		55,499	1,990	591	42,512	100,592	61,361

Note: If a position is split, an asterisk (\*) will appear in the Split/Count column. If the split position is also counted in the component, two asterisks (\*\*) will appear in this column. [No valid job title] appearing in the Job Class Title indicates that the PCN has an invalid class code or invalid range for the class code effective date of this scenario.

**Personal Services Expenditure Detail**  
**Department of Family and Community Services**

**Scenario:** FY2024 Governor (19867)  
**Component:** Front Line Social Workers (3318)  
**RDU:** Children's Services (486)

PCN	Job Class Title	Time Status	Retire Code	Barg Unit	Location	Salary Sched	Range / Step	Comp Months	Split / Count	Annual Salaries	COLA	Premium Pay	Annual Benefits	Total Costs	UGF Amount
06-4655	C/C Lic Spec 1	FT	A	GP	Fairbanks	203	16B / C	12.0		58,563	2,078	0	43,548	104,189	63,555
06-4657	Pro Svcs Sp 2	FT	A	GP	Fairbanks	203	17B / C	12.0		61,960	2,198	0	44,972	109,130	66,569
06-4658	Pro Svcs Sp 2	FT	A	GP	Juneau	205	17C / D	12.0		66,948	2,809	12,232	52,191	134,180	81,850
06-4659	Pro Svcs Sp 3	FT	A	GP	Anchorage	200	19C	9.0		53,264	1,890	0	36,577	91,731	55,956
06-4660	Office Assistant 1	FT	A	GP	Anchorage	200	8B / C	12.0		33,842	1,201	0	33,185	68,228	41,619
06-4663	Social Services Associate	FT	A	GP	Kotzebue	260	12C / D	12.0		71,616	2,737	5,531	51,339	131,223	80,046
06-4664	Social Services Associate	FT	A	GP	Aniak	250	12N / O	12.0		90,911	3,276	1,428	57,707	153,322	93,526
06-4665	Office Assistant 1	FT	A	GP	Fairbanks	203	8C	9.0		26,661	946	0	25,425	53,032	32,350
06-4670	Office Assistant 3	FT	A	GP	Anchorage	200	11B / C	12.0		40,911	1,452	0	36,149	78,512	47,892
06-4671	Social Services Associate	FT	A	GP	Anchorage	200	12B / C	12.0		43,419	1,541	0	37,200	82,160	50,118
06-4672	Office Assistant 2	FT	A	GP	Wasilla	200	10G / J	12.0		44,558	1,581	0	37,677	83,816	51,128
06-4819	C/C Lic Spec 1	FT	A	GP	Bethel	250	16G / J	12.0		101,579	3,604	0	61,581	166,764	101,726
06-4922	Pro Svcs Sp 3	FT	A	GP	Wasilla	200	19B / C	12.0		68,908	2,514	1,954	48,704	122,080	68,365
06-8075	Eligibility Technician 2	FT	A	GP	Wasilla	200	14E / F	12.0		54,311	1,927	0	41,766	98,004	59,782
06-8104	Eligibility Technician 4	FT	A	SS	Anchorage	99	17Q	12.0		94,016	1,334	0	61,084	156,434	95,425
06-8149	Eligibility Technician 2	FT	A	GP	Anchorage	200	14C	12.0		50,135	1,779	0	40,015	91,929	56,077
06-8485	Pro Svcs Sp 2	FT	P	GP	Wasilla	200	17C / D	12.0		62,784	2,228	0	45,318	110,330	67,301
06-9131	Office Assistant 2	FT	A	GP	Anchorage	200	10B / C	12.0		38,232	1,356	0	35,026	74,614	45,515
06-9132	Social Services Associate	FT	A	GP	Anchorage	200	12F / G	12.0		49,043	1,740	0	39,557	90,340	55,107
06-9133	Pro Svcs Sp 3	FT	A	GG	Anchorage	99	19P	12.0		103,624	3,677	0	62,438	169,739	103,541
06-9134	Pro Svcs Sp 3	FT	A	GP	Anchorage	200	19J / K	12.0		85,541	3,035	0	54,857	143,433	87,494
06-9135	Pro Svcs Sp 3	FT	A	GP	Anchorage	200	19M	12.0		93,035	3,301	0	57,999	154,335	94,144
06-9136	Pro Svcs Sp 3	FT	A	GP	Wasilla	200	19B / C	12.0		70,774	2,511	0	48,667	121,952	74,391
06-9140	Pro Svcs Sp 2	FT	A	GP	Wasilla	99	17O / P	12.0		89,216	3,498	9,383	60,331	162,428	99,081
06-9141	Pro Svcs Sp 2	FT	A	GP	Juneau	205	17B / C	12.0		63,293	2,270	695	45,822	112,080	68,369
06-9142	Pro Svcs Sp 2	FT	A	GP	Fairbanks	203	17M	12.0		83,811	2,974	0	54,132	140,917	85,959
06-9143	Pro Svcs Sp 2	FT	A	GP	Anchorage	200	17O	12.0		86,756	3,114	1,000	55,786	146,656	89,460
06-9144	Ss Prog Coord	FT	A	GP	Anchorage	200	20C	12.0		75,972	2,695	0	50,846	129,513	79,003
06-9145	Ss Prog Coord	FT	A	GP	Anchorage	200	20E / F	12.0		83,506	2,963	0	54,004	140,473	85,689
06-9146	Pro Svcs Sp 2	FT	A	GP	Wasilla	200	17E / F	12.0		68,374	2,426	0	47,661	118,461	72,261
06-9147	Social Services Associate	FT	A	GP	Kenai	200	12B / C	12.0		43,051	1,527	0	37,046	81,624	49,791
06-9148	Pro Svcs Sp 2	FT	A	GP	Homer	200	17A / B	12.0		58,080	2,061	0	43,346	103,487	63,127
06-9149	Pro Svcs Sp 2	FT	A	GP	Wasilla	200	17D / E	12.0		65,446	2,322	0	46,434	114,202	69,663
06-9150	Pro Svcs Sp 3	FT	A	GP	Anchorage	200	19B / C	12.0		70,736	2,596	2,432	49,671	125,435	76,515
06-9151	Pro Svcs Sp 3	FT	P	GP	Bethel	250	19D / F	12.0		112,722	4,375	10,580	70,687	198,364	121,002
06-9152	Pro Svcs Sp 4	FT	A	SS	Homer	99	20N	12.0		106,242	1,544	2,552	67,279	177,617	108,346
06-9153	Pro Svcs Sp 2	FT	A	GP	Anchorage	200	17C / D	12.0		62,728	2,278	1,475	45,913	112,394	68,560
06-9154	Pro Svcs Sp 2	FT	A	GP	Anchorage	200	17C	12.0		62,049	2,237	1,000	45,429	110,715	67,536

Note: If a position is split, an asterisk (\*) will appear in the Split/Count column. If the split position is also counted in the component, two asterisks (\*\*) will appear in this column.  
 [No valid job title] appearing in the Job Class Title indicates that the PCN has an invalid class code or invalid range for the class code effective date of this scenario.

**Personal Services Expenditure Detail**  
**Department of Family and Community Services**

**Scenario:** FY2024 Governor (19867)  
**Component:** Front Line Social Workers (3318)  
**RDU:** Children's Services (486)

PCN	Job Class Title	Time Status	Retire Code	Barg Unit	Location	Salary Sched	Range / Step	Comp Months	Split / Count	Annual Salaries	COLA	Premium Pay	Annual Benefits	Total Costs	UGF Amount
06-9155	Pro Svcs Sp 2	FT	A	GP	Anchorage	200	17B / C	12.0		60,800	2,438	7,905	47,800	118,943	72,555
06-9156	Pro Svcs Sp 3	FT	A	GP	Anchorage	200	19G / J	12.0		82,677	3,132	5,610	56,009	147,428	89,931
06-9157	Social Services Associate	FT	A	GP	Nome	237	12C	9.0		45,162	1,617	408	33,352	80,539	49,129
06-9158	Pro Svcs Sp 4	FT	A	SS	Anchorage	200	20C / D	9.0		63,118	932	2,578	43,794	110,422	67,357
06-9159	Pro Svcs Sp 4	FT	A	SS	Kotzebue	260	20F	12.0		143,832	2,144	7,244	85,004	238,224	145,317
06-9160	Pro Svcs Sp 2	FT	A	GP	Fairbanks	203	17A / B	12.0		61,602	2,186	0	44,822	108,610	66,252
06-9161	Pro Svcs Sp 2	FT	A	GP	Anchorage	200	17C / D	9.0		48,189	1,710	0	34,450	84,349	51,453
06-9162	Pro Svcs Sp 4	FT	A	SS	Anchorage	200	20M / N	12.0		104,388	1,548	4,660	67,386	177,982	108,569
06-9163	Social Services Associate	FT	A	GP	Anchorage	200	12G	12.0		50,135	1,779	0	40,015	91,929	56,077
06-9164	Pro Svcs Sp 2	FT	A	GP	Anchorage	200	17C	9.0		46,537	1,651	0	33,757	81,945	49,987
06-9165	Pro Svcs Sp 2	FT	A	GP	Anchorage	200	17K	12.0		76,343	2,765	1,590	51,668	132,366	80,743
06-9167	Pro Svcs Sp 4	FT	A	SS	Anchorage	200	20D / E	12.0		85,717	1,216	0	57,605	144,538	88,168
06-9168	Ss Prog Coord	FT	A	GP	Anchorage	200	20K	12.0		93,366	3,313	0	58,138	154,817	94,438
06-9171	Ss Prog Coord	FT	A	GP	Anchorage	200	20N	12.0		102,785	3,647	0	62,086	168,518	102,796
06-9172	C/C Lic Spec 1	FT	A	GP	Anchorage	200	16M	12.0		76,167	2,711	235	51,026	130,139	79,385
06-9173	C/C Lic Spec 1	FT	A	GP	Anchorage	99	16N	12.0		79,570	2,823	0	52,354	134,747	82,196
06-9174	C/C Lic Spec 1	FT	A	GP	Anchorage	99	16M / N	12.0		78,416	2,782	0	51,871	133,069	81,172
06-9175	C/C Lic Spec 1	FT	A	GP	Juneau	205	16G / J	12.0		72,056	2,566	268	49,317	124,207	75,766
06-9176	C/C Lic Spec 2	FT	A	SS	Anchorage	200	18A / B	12.0		68,396	971	0	50,344	119,711	73,024
06-9177	C/C Lic Spec 1	FT	A	GP	Wasilla	200	16B / C	12.0		56,062	2,026	1,040	42,936	102,064	62,259
06-9178	C/C Lic Spec 1	FT	A	GP	Kenai	200	16E / F	12.0		64,161	2,298	612	46,151	113,222	69,065
06-9179	C/C Lic Spec 1	FT	A	GP	Wasilla	200	16F	12.0		64,253	2,302	642	46,203	113,400	69,174
06-9180	C/C Lic Spec 1	FT	A	GP	Bethel	250	16C	12.0		86,502	3,069	0	55,260	144,831	88,347
06-9181	C/C Lic Spec 1	FT	A	GP	Fairbanks	203	16J	12.0		71,273	2,529	0	48,876	122,678	74,834
06-9182	Pro Svcs Sp 3	FT	A	GP	Anchorage	200	19D / E	12.0		74,812	2,859	5,765	52,777	136,213	83,090
06-9183	Pro Svcs Sp 4	FT	A	SS	Wasilla	200	20D / E	12.0		85,301	1,230	1,353	57,998	145,882	88,988
06-9184	Pro Svcs Sp 2	FT	A	GP	Wasilla	200	17F / G	12.0		70,642	2,894	10,917	53,188	137,641	83,961
06-9185	Pro Svcs Sp 3	FT	A	GP	Anchorage	200	19C	9.0		53,264	1,890	0	36,577	91,731	55,956
06-9186	Pro Svcs Sp 2	FT	A	GP	Wasilla	200	17B / C	12.0		60,709	2,236	2,301	45,412	110,658	67,501
06-9187	Pro Svcs Sp 2	FT	A	GP	Wasilla	200	17D / E	12.0		64,987	2,306	0	46,241	113,534	69,256
06-9188	Pro Svcs Sp 2	FT	A	GP	Wasilla	200	17A / B	12.0		59,536	2,112	0	43,956	105,604	64,418
06-9189	Pro Svcs Sp 2	FT	A	GP	Kenai	200	17B / C	12.0		59,956	2,546	11,799	49,078	123,379	75,261
06-9190	Pro Svcs Sp 2	FT	A	GP	Kenai	200	17A / B	12.0		58,062	2,219	4,480	45,216	109,977	67,086
06-9191	Pro Svcs Sp 2	FT	A	GP	Fairbanks	203	17B / C	12.0		63,242	2,310	1,854	46,287	113,693	69,353
06-9192	Pro Svcs Sp 2	FT	A	GP	Fairbanks	203	17C	9.0		47,926	1,882	5,112	36,483	91,403	55,756
06-9193	Pro Svcs Sp 2	FT	A	GP	Anchorage	200	17E	12.0		66,456	2,724	10,330	51,187	130,697	79,725
06-9194	Pro Svcs Sp 2	FT	A	GP	Anchorage	200	17B / C	12.0		62,049	2,201	0	45,010	109,260	66,649
06-9195	Pro Svcs Sp 2	FT	A	GP	Fairbanks	203	17C	9.0		47,926	1,700	0	34,340	83,966	51,219

Note: If a position is split, an asterisk (\*) will appear in the Split/Count column. If the split position is also counted in the component, two asterisks (\*\*) will appear in this column. [No valid job title] appearing in the Job Class Title indicates that the PCN has an invalid class code or invalid range for the class code effective date of this scenario.



**Personal Services Expenditure Detail**  
**Department of Family and Community Services**

**Scenario:** FY2024 Governor (19867)  
**Component:** Front Line Social Workers (3318)  
**RDU:** Children's Services (486)

PCN	Job Class Title	Time Status	Retire Code	Barg Unit	Location	Salary Sched	Range / Step	Comp Months	Split / Count	Annual Salaries	COLA	Premium Pay	Annual Benefits	Total Costs	UGF Amount
06-9196	Pro Svcs Sp 2	FT	A	GP	Anchorage	200	17G	12.0		71,019	2,520	0	48,770	122,309	74,609
06-9267	Pro Svcs Sp 2	FT	A	GP	Anchorage	200	17B / C	12.0		61,057	2,166	0	44,594	107,817	65,768
06-9268	Accounting Technician 1	FT	A	GP	Fairbanks	203	12G	12.0		51,636	1,832	0	40,644	94,112	57,408
06-9270	Pro Svcs Sp 2	FT	A	GP	Anchorage	200	17C / D	12.0		64,253	2,280	0	45,933	112,466	68,604
06-9271	Pro Svcs Sp 2	FT	A	GP	Anchorage	200	17A / B	12.0		58,699	2,202	3,353	45,011	109,265	66,652
06-9272	Pro Svcs Sp 2	FT	A	GP	Anchorage	200	17B / C	12.0		61,774	2,217	714	45,194	109,899	67,038
06-9273	C/C Lic Spec 3	FT	A	SS	Anchorage	200	20F / J	12.0		91,111	1,293	0	59,866	152,270	92,885
06-9274	C/C Lic Spec 2	FT	A	SS	Kenai	200	18F / J	12.0		79,240	1,125	0	54,890	135,255	82,506
06-9276	Social Services Associate	FT	A	GP	Wasilla	200	12A / B	12.0		42,181	1,579	2,312	37,650	83,722	51,070
06-9278	Pro Svcs Sp 2	FT	A	GP	Wasilla	200	17K	12.0		76,343	2,975	7,500	54,146	140,964	85,988
06-9279	Pro Svcs Sp 2	FT	A	GP	Anchorage	200	17C	9.0		46,537	1,871	6,188	36,351	90,947	55,478
06-9280	Pro Svcs Sp 2	FT	A	GP	Anchorage	200	17F / G	12.0		70,171	2,777	8,111	51,814	132,873	81,053
06-9281	Pro Svcs Sp 2	FT	A	GP	Anchorage	200	17C / D	12.0		63,702	2,349	2,499	46,750	115,300	70,333
06-9282	Pro Svcs Sp 2	FT	A	GP	Anchorage	200	17A / B	12.0		59,846	2,368	6,905	46,981	116,100	70,821
06-9283	Pro Svcs Sp 2	FT	A	GP	Wasilla	200	17G / J	12.0		73,188	2,597	0	49,679	125,464	76,533
06-9284	Pro Svcs Sp 2	FT	A	GP	Kenai	200	17E / F	12.0		66,648	2,365	0	46,937	115,950	70,730
06-9285	C/C Lic Spec 1	FT	A	GP	Wasilla	200	16E / F	12.0		63,243	2,367	3,482	46,970	116,062	70,798
06-9286	Office Assistant 1	FT	A	GP	Anchorage	200	8C / D	9.0		26,676	946	0	25,432	53,054	32,363
06-9287	Accounting Technician 1	FT	A	GP	Wasilla	200	12B / C	12.0		43,858	1,591	981	37,795	84,225	51,377
06-9288	Office Assistant 2	FT	A	GP	Wasilla	200	10A / B	12.0		37,515	1,340	255	34,832	73,942	45,105
06-9289	Protective Services Manager 1	FT	A	SS	Kenai	200	21M / N	12.0		112,485	1,596	0	68,826	182,907	111,573
06-9290	Pro Svcs Sp 4	FT	A	SS	Anchorage	200	20K	12.0		95,826	1,378	1,262	62,372	160,838	98,111
06-9291	Pro Svcs Sp 3	FT	A	GP	Wasilla	200	19A / B	12.0		68,163	2,661	6,846	50,442	128,112	78,148
06-9292	Pro Svcs Sp 3	FT	A	GP	Bethel	250	19C / D	9.0		82,865	2,940	0	48,986	134,791	82,223
06-9295	Administrative Officer 1	FT	A	SS	Bethel	250	17D / E	12.0		103,755	1,472	0	65,167	170,394	103,940
06-9296	Protective Services Manager 2	FT	A	SS	Anchorage	200	22F / J	12.0		102,807	1,459	0	64,769	169,035	103,111
06-9297	Pro Svcs Sp 3	FT	A	GP	Bethel	250	19G / J	12.0		123,598	4,385	0	70,811	198,794	121,264
06-9298	Pro Svcs Sp 3	FT	A	GP	Bethel	250	19C / D	12.0		107,749	4,111	8,115	67,569	187,544	114,402
06-9301	Pro Svcs Sp 2	FT	A	GP	Fairbanks	203	17E / F	12.0		68,941	2,446	0	47,899	119,286	72,765
06-9302	Pro Svcs Sp 2	FT	A	GP	Anchorage	200	17M	12.0		81,374	3,220	9,389	57,046	151,029	92,128
06-9303	Pro Svcs Sp 3	FT	A	GP	Bethel	250	19G / J	12.0		122,161	4,334	0	70,209	196,704	119,989
06-9305	Social Services Associate	FT	A	GP	Sitka	205	12J / K	12.0		55,169	1,957	0	42,126	99,252	60,544
06-9306	Social Services Associate	FT	A	GP	Craig	200	12E / F	12.0		47,231	1,676	0	38,798	87,705	53,500
06-9307	Social Services Associate	FT	A	GP	Anchorage	200	12G / J	12.0		51,374	1,823	0	40,535	93,732	57,177
06-9308	Social Services Associate	FT	A	GP	Anchorage	200	12F / G	12.0		49,316	1,750	0	39,672	90,738	55,350
06-9309	Social Services Associate	FT	A	GP	Anchorage	200	12D / E	12.0		45,672	1,620	0	38,144	85,436	52,116
06-9310	Social Services Associate	FT	A	GP	Anchorage	200	12D / E	12.0		46,898	1,664	0	38,658	87,220	53,204

Note: If a position is split, an asterisk (\*) will appear in the Split/Count column. If the split position is also counted in the component, two asterisks (\*\*) will appear in this column. [No valid job title] appearing in the Job Class Title indicates that the PCN has an invalid class code or invalid range for the class code effective date of this scenario.

**Personal Services Expenditure Detail**  
**Department of Family and Community Services**

**Scenario:** FY2024 Governor (19867)  
**Component:** Front Line Social Workers (3318)  
**RDU:** Children's Services (486)

PCN	Job Class Title	Time Status	Retire Code	Barg Unit	Location	Salary Sched	Range / Step	Comp Months	Split / Count	Annual Salaries	COLA	Premium Pay	Annual Benefits	Total Costs	UGF Amount
06-9311	Social Services Associate	FT	A	GP	Anchorage	200	12C / D	12.0		44,536	1,580	0	37,668	83,784	51,108
06-9312	Social Services Associate	FT	A	GP	Anchorage	200	12C	9.0		32,965	1,170	0	28,068	62,203	37,944
06-9313	Office Assistant 2	FT	A	GP	Anchorage	200	10C / D	9.0		30,069	1,067	0	26,854	57,990	35,374
06-9315	Pro Svcs Sp 2	FT	A	GP	Anchorage	200	17C / D	12.0		64,253	2,280	0	45,933	112,466	68,604
06-9316	Office Assistant 2	FT	A	GP	Anchorage	200	10C / D	12.0		40,017	1,420	0	35,774	77,211	47,099
06-9317	Office Assistant 2	FT	A	GP	Anchorage	200	10G	12.0		43,953	1,559	0	37,424	82,936	50,591
06-9318	Ss Prog Coord	FT	A	GP	Anchorage	200	20G	12.0		86,775	3,079	0	55,375	145,229	88,590
06-9319	Ss Prog Coord	FT	A	GP	Anchorage	200	20M	12.0		99,548	3,532	0	60,729	163,809	99,924
06-9320	Ss Prog Coord	FT	A	GP	Anchorage	200	20C / D	9.0		59,070	2,096	0	39,011	100,177	61,108
06-9321	Social Services Associate	FT	A	GP	Fairbanks	203	12C / D	12.0		45,764	1,624	0	38,183	85,571	52,198
06-9322	Pro Svcs Sp 3	FT	A	GP	Anchorage	200	19B	12.0		68,757	2,628	5,311	50,048	126,744	77,314
06-9323	Pro Svcs Sp 3	FT	A	GP	Ketchikan	200	19C	9.0		53,264	1,890	0	36,577	91,731	55,956
06-9324	Pro Svcs Sp 3	FT	A	GP	Anchorage	200	19C / D	12.0		71,129	2,524	0	48,816	122,469	74,706
06-9325	Pro Svcs Sp 3	FT	A	GP	Anchorage	200	19B / C	12.0		69,549	2,468	0	48,154	120,171	73,304
06-9326	Pro Svcs Sp 3	FT	A	GP	Anchorage	200	19C / D	12.0		73,476	2,607	0	49,800	125,883	76,789
06-9327	Pro Svcs Sp 3	FT	A	GP	Anchorage	200	19J	12.0		84,533	2,999	0	54,435	141,967	86,600
06-9328	Accounting Technician 1	FT	A	GP	Wasilla	200	12B / C	12.0		43,656	1,584	981	37,710	83,931	51,198
06-9329	Pro Svcs Sp 2	FT	A	GP	Wasilla	200	17A / B	12.0		58,353	2,482	11,588	48,318	120,741	73,652
06-9330	Pro Svcs Sp 2	FT	A	GP	Wasilla	200	17F / G	12.0		68,851	2,724	7,933	51,187	130,695	79,724
06-9331	Pro Svcs Sp 2	FT	A	GP	Wasilla	200	17A / B	12.0		57,844	2,052	0	43,247	103,143	62,917
06-9332	C/C Lic Spec 1	FT	A	GP	Wasilla	200	16G	12.0		66,456	2,358	0	46,857	115,671	70,559
06-9333	C/C Lic Spec 1	FT	A	GP	Wasilla	200	16B / C	12.0		57,482	2,039	0	43,095	102,616	62,596
06-9334	Pro Svcs Sp 2	FT	A	GP	Wasilla	200	17F / G	12.0		69,040	2,450	0	47,940	119,430	72,852
06-9335	Pro Svcs Sp 2	FT	A	GP	Anchorage	200	17A	12.0		57,662	2,282	6,653	45,960	112,557	68,660
06-9336	Pro Svcs Sp 2	FT	A	GP	Anchorage	200	17C	12.0		62,049	2,201	0	45,010	109,260	66,649
06-9337	C/C Lic Spec 1	FT	A	GP	Anchorage	200	16B / C	12.0		56,615	2,009	0	42,732	101,356	61,827
06-9338	Pro Svcs Sp 2	FT	A	GP	Anchorage	200	17G	12.0		71,019	2,520	0	48,770	122,309	74,609
06-9339	Eligibility Technician 2	FT	A	GP	Anchorage	200	14D	9.0		39,005	1,384	0	30,600	70,989	43,303
06-9341	Pro Svcs Sp 2	FT	A	GP	Anchorage	200	17C	9.0		46,537	1,651	0	33,757	81,945	49,987
06-9342	Pro Svcs Sp 2	FT	A	GP	Kenai	200	17C / D	9.0		48,189	2,060	9,885	38,594	98,728	60,224
06-9343	Pro Svcs Sp 2	FT	A	GP	Kenai	200	17A / B	9.0		44,411	1,576	0	32,866	78,853	48,100
06-9344	Pro Svcs Sp 2	FT	A	GP	Kenai	200	17B / C	12.0		60,360	2,142	0	44,302	106,804	65,150
06-9345	Pro Svcs Sp 2	FT	A	GP	Wasilla	200	17B / C	12.0		61,480	2,426	6,905	47,666	118,477	72,271
06-9346	Pro Svcs Sp 2	FT	A	GP	Wasilla	200	17E / F	12.0		67,031	2,378	0	47,098	116,507	71,069
06-9347	Pro Svcs Sp 2	FT	A	GP	Wasilla	200	17B / C	12.0		61,351	2,503	9,207	48,577	121,638	74,199
06-9348	Pro Svcs Sp 2	FT	A	GP	Wasilla	200	17F	12.0		68,757	2,850	11,578	52,675	135,860	82,875
06-9349	Pro Svcs Sp 2	FT	A	GP	Wasilla	200	17C / D	12.0		64,142	2,530	7,159	48,888	122,719	74,859
06-9350	Pro Svcs Sp 2	FT	A	GP	Wasilla	200	17D / E	12.0		65,538	2,624	8,413	49,999	126,574	77,210

Note: If a position is split, an asterisk (\*) will appear in the Split/Count column. If the split position is also counted in the component, two asterisks (\*\*) will appear in this column. [No valid job title] appearing in the Job Class Title indicates that the PCN has an invalid class code or invalid range for the class code effective date of this scenario.

**Personal Services Expenditure Detail**  
**Department of Family and Community Services**

**Scenario:** FY2024 Governor (19867)  
**Component:** Front Line Social Workers (3318)  
**RDU:** Children's Services (486)

PCN	Job Class Title	Time Status	Retire Code	Barg Unit	Location	Salary Sched	Range / Step	Comp Months	Split / Count	Annual Salaries	COLA	Premium Pay	Annual Benefits	Total Costs	UGF Amount
06-9351	Pro Svcs Sp 2	FT	A	GP	Wasilla	200	17C	12.0		62,049	2,201	0	45,010	109,260	66,649
06-9352	Pro Svcs Sp 2	FT	A	GP	Wasilla	200	17C / D	12.0		63,610	2,257	0	45,664	111,531	68,034
06-9353	Pro Svcs Sp 2	FT	A	GP	Wasilla	200	17A / B	12.0		58,098	2,061	0	43,353	103,512	63,142
06-9354	Pro Svcs Sp 2	FT	A	GP	Wasilla	200	17C / D	12.0		63,940	2,269	0	45,802	112,011	68,327
06-9355	Pro Svcs Sp 2	FT	A	GP	Wasilla	200	17C / D	12.0		64,253	2,718	12,356	51,113	130,440	79,568
06-9356	Pro Svcs Sp 3	FT	A	GP	Kotzebue	260	19B / C	12.0		113,506	4,027	0	66,580	184,113	112,309
06-9357	Pro Svcs Sp 3	FT	A	GP	Wasilla	200	19C / D	12.0		72,313	2,759	5,463	51,602	132,137	80,604
06-9358	Pro Svcs Sp 4	FT	A	SS	Wasilla	200	20C / D	12.0		83,733	1,188	0	56,773	141,694	86,433
06-9359	Pro Svcs Sp 4	FT	A	SS	Wasilla	200	20K	12.0		95,826	1,360	0	61,843	159,029	97,008
06-9360	Pro Svcs Sp 2	FT	A	GP	Fairbanks	203	17E / F	12.0		70,428	2,499	0	48,522	121,449	74,084
06-9361	Social Services Associate	FT	A	GP	Wasilla	200	12E / F	12.0		48,323	1,791	2,164	40,163	92,441	56,389
06-9362	Accounting Technician 1	FT	A	GP	Wasilla	200	12B / C	12.0		43,680	1,585	981	37,721	83,967	51,220
06-9363	Office Assistant 2	FT	A	GP	Wasilla	200	10E / F	12.0		41,315	1,522	1,587	36,983	81,407	49,658
06-9364	Social Services Associate	FT	A	GP	Wasilla	200	12C / D	9.0		33,974	1,267	1,742	29,221	66,204	40,384
06-9365	Pro Svcs Sp 2	FT	A	GP	Anchorage	200	17C / D	12.0		64,253	2,280	0	45,933	112,466	68,604
06-9366	Pro Svcs Sp 2	FT	A	GP	Anchorage	200	17C	9.0		46,537	1,651	0	33,757	81,945	49,987
06-9367	Pro Svcs Sp 2	FT	A	GP	Anchorage	200	17E / F	12.0		67,894	2,409	0	47,460	117,763	71,835
06-9368	Pro Svcs Sp 2	FT	A	GP	Fairbanks	203	17C	12.0		63,902	2,267	0	45,786	111,955	68,293
06-9369	Pro Svcs Sp 4	FT	A	GP	Anchorage	200	20F / G	12.0		85,560	3,036	0	54,865	143,461	87,511
06-9370	Pro Svcs Sp 2	FT	A	GP	Anchorage	200	17C / D	12.0		64,253	2,630	9,885	50,077	126,845	77,376
06-9371	Pro Svcs Sp 3	FT	A	GP	Wasilla	200	19C / D	12.0		72,445	2,764	5,463	51,658	132,330	80,721
06-9373	Accounting Technician 1	FT	A	GP	Wasilla	200	12A / B	12.0		42,477	1,530	634	37,071	81,712	49,844
06-9374	Pro Svcs Sp 2	FT	A	GP	Wrangell	200	17C / D	12.0		63,665	2,259	0	45,687	111,611	22,322
06-9380	Pro Svcs Sp 2	FT	A	GP	Anchorage	200	17C / D	9.0		48,189	1,710	0	34,450	84,349	51,453
06-9381	Pro Svcs Sp 2	FT	A	GP	Anchorage	200	17D	12.0		64,253	2,280	0	45,933	112,466	68,604
06-9382	Pro Svcs Sp 2	FT	A	GP	Anchorage	200	17C / D	9.0		48,189	1,710	0	34,450	84,349	51,453
06-9383	Program Coordinator 2	FT	A	GP	Anchorage	200	20F	12.0		84,123	2,985	0	54,263	141,371	86,236
06-9384	Office Assistant 2	FT	A	GP	Wasilla	200	10G / J	12.0		44,104	1,565	0	37,487	83,156	50,725
06-9385	Office Assistant 2	FT	A	GP	Anchorage	200	10B / C	12.0		38,602	1,370	0	35,181	75,153	45,843
06-9386	Social Services Associate	FT	A	GP	Valdez	211	12D / E	12.0		51,991	1,845	0	40,793	94,629	57,724
06-9387	Social Services Associate	FT	A	GP	Kenai	200	12C / D	12.0		44,659	1,585	0	37,720	83,964	51,218
06-9388	Social Services Associate	FT	A	GP	Petersburg	200	12C	9.0		32,965	1,170	0	28,068	62,203	37,944
06-9389	Pro Svcs Sp 3	FT	A	GP	Kodiak	211	19C / D	12.0		81,429	2,925	1,000	53,553	138,907	84,733
06-9390	Pro Svcs Sp 2	FT	A	GP	Anchorage	200	17C / D	9.0		48,189	2,060	9,885	38,594	98,728	60,224
06-9391	Pro Svcs Sp 4	FT	A	SS	Anchorage	200	20L	12.0		98,946	1,404	0	63,151	163,501	99,736
06-9392	Pro Svcs Sp 4	FT	A	SS	Anchorage	200	20C / D	12.0		82,559	1,172	0	56,281	140,012	85,407
06-9393	Pro Svcs Sp 4	FT	A	SS	Anchorage	200	20C / D	12.0		83,832	1,190	0	56,815	141,837	86,521
06-9394	Pro Svcs Sp 2	FT	A	GP	Fairbanks	203	17A / B	12.0		61,453	2,180	0	44,760	108,393	66,120

Note: If a position is split, an asterisk (\*) will appear in the Split/Count column. If the split position is also counted in the component, two asterisks (\*\*) will appear in this column. [No valid job title] appearing in the Job Class Title indicates that the PCN has an invalid class code or invalid range for the class code effective date of this scenario.

**Personal Services Expenditure Detail**  
**Department of Family and Community Services**

**Scenario:** FY2024 Governor (19867)  
**Component:** Front Line Social Workers (3318)  
**RDU:** Children's Services (486)

PCN	Job Class Title	Time Status	Retire Code	Barg Unit	Location	Salary Sched	Range / Step	Comp Months	Split / Count	Annual Salaries	COLA	Premium Pay	Annual Benefits	Total Costs	UGF Amount
06-9395	Pro Svcs Sp 2	FT	A	GP	Fairbanks	203	17B / C	12.0		63,826	2,265	0	45,755	111,846	68,226
06-9396	Pro Svcs Sp 2	FT	A	GP	Fairbanks	203	17C	9.0		47,926	1,700	0	34,340	83,966	51,219
06-9397	Pro Svcs Sp 3	FT	A	GP	Kotzebue	260	19C	9.0		85,220	3,024	0	49,973	138,217	84,312
06-9398	Pro Svcs Sp 3	FT	A	GP	Nome	237	19B / C	12.0		95,031	3,629	7,246	61,873	167,779	102,345
06-9399	Pro Svcs Sp 3	FT	A	GP	Craig	200	19C	9.0		53,264	1,899	273	36,692	92,128	56,198
06-N12024	Pro Svcs Sp 2	NP	N	GP	Anchorage	200	17A	12.0		57,662	1,684	0	9,699	69,045	42,118
06-N17018	Pro Svcs Sp 2	NP	N	GP	Fairbanks	203	17C	5.0		26,626	762	0	3,863	31,251	19,063
26-?002	Social Services Associate	FT	A	GP	Anchorage	200	12C	9.0		32,965	1,170	0	28,068	62,203	37,944
26-?003	Social Services Associate	FT	A	GP	Anchorage	200	12C / D	9.0		33,974	1,205	0	28,491	63,670	35,655
26-?004	Social Services Associate	FT	A	GP	Anchorage	200	12C	9.0		32,965	1,170	0	28,068	62,203	37,944
26-?005	Social Services Associate	FT	A	GP	Anchorage	200	12C / D	9.0		33,974	1,205	0	28,491	63,670	38,839
26-?006	Social Services Associate	FT	A	GP	Anchorage	200	12C / D	9.0		33,974	1,205	0	28,491	63,670	38,839
26-?007	Social Services Associate	FT	A	GP	Fairbanks	203	12C / D	9.0		34,998	1,242	0	28,920	65,160	39,748
26-?008	Social Services Associate	FT	A	GP	Fairbanks	203	12C	9.0		33,959	1,205	0	28,485	63,649	38,826
26-?009	Social Services Associate	FT	A	GP	Fairbanks	203	12C	9.0		33,959	1,205	0	28,485	63,649	38,826
26-?010	Social Services Associate	FT	A	GP	Fairbanks	203	12C	9.0		33,959	1,205	0	28,485	63,649	38,826
26-?011	Social Services Associate	FT	A	GP	Wasilla	200	12C / D	9.0		33,974	1,205	0	28,491	63,670	38,839
26-?012	Social Services Associate	FT	A	GP	Wasilla	200	12C / D	9.0		33,974	1,205	0	28,491	63,670	38,839
26-?013	Social Services Associate	FT	A	GP	Juneau	205	12C	9.0		34,617	1,228	0	28,760	64,605	39,409
26-?014	Social Services Associate	FT	A	GP	Bethel	250	12C	9.0		49,447	1,754	0	34,977	86,178	52,569
26-?015	Social Services Associate	FT	A	GP	Kenai	200	12C / D	9.0		33,974	1,205	0	28,491	63,670	38,839
26-?016	Social Services Associate	FT	A	GP	Nome	237	12C	9.0		45,162	1,602	0	33,181	79,945	48,767
26-?017	Social Services Associate	FT	A	GP	Kotzebue	260	12C / D	9.0		54,361	1,929	0	37,037	93,327	56,930
26-?018	Pro Svcs Sp 4	NP	A	SS	Anchorage	200	20A	6.0		37,908	434	0	5,500	43,842	26,744
26-?019	Pro Svcs Sp 4	NP	A	SS	Juneau	205	20C	5.0		35,507	407	0	5,152	41,066	25,050
26-?020	Pro Svcs Sp 4	NP	A	SS	Fairbanks	203	20C	5.0		34,831	399	0	5,054	40,284	24,573
26-?021	Pro Svcs Sp 4	NP	A	SS	Wasilla	200	20C	5.0		33,817	387	0	4,907	39,111	23,858
26-?022	Mental Health Clinician 4	FT	A	GP	Anchorage	200	23C	9.0		69,674	2,472	0	43,456	115,602	70,517
26-?028	Social Services Associate	FT	A	GP	Anchorage	200	12C	9.0		32,965	1,170	0	28,068	62,203	37,944
26-?031	Office Assistant 3	FT	A	GP	Anchorage	200	11C / D	9.0		31,897	1,132	0	27,620	60,649	36,996
26-?032	Office Assistant 3	FT	A	GP	Wasilla	200	11C / D	9.0		31,897	1,132	0	27,620	60,649	36,996

Note: If a position is split, an asterisk (\*) will appear in the Split/Count column. If the split position is also counted in the component, two asterisks (\*\*) will appear in this column. [No valid job title] appearing in the Job Class Title indicates that the PCN has an invalid class code or invalid range for the class code effective date of this scenario.

**Personal Services Expenditure Detail**  
**Department of Family and Community Services**

**Scenario:** FY2024 Governor (19867)  
**Component:** Front Line Social Workers (3318)  
**RDU:** Children's Services (486)

PCN	Job Class Title	Time Status	Retire Code	Barg Unit	Location	Salary Sched	Range / Step	Comp Months	Split / Count	Annual Salaries	COLA	Premium Pay	Annual Benefits	Total Costs	UGF Amount
		<b>Total Positions</b>	<b>New</b>	<b>Deleted</b>										<b>Total Salary Costs:</b>	36,747,979
														<b>Total COLA:</b>	1,148,720
	<b>Full Time Positions:</b>	548	0	0										<b>Total Premium Pay:</b>	976,660
	<b>Part Time Positions:</b>	0	0	0										<b>Total Benefits:</b>	25,972,350
	<b>Non Permanent Positions:</b>	6	0	0											
	<b>Positions in Component:</b>	554	0	0											
	<b>Total Component Months:</b>	6,335.0													
														<b>Total Pre-Vacancy:</b>	64,845,709
														<b>Minus Vacancy Adjustment of 6.79%:</b>	(4,402,509)
														<b>Total Post-Vacancy:</b>	60,443,200
														<b>Plus Lump Sum Premium Pay:</b>	0
														<b>Personal Services Line 100:</b>	60,443,200

<b>PCN Funding Sources:</b>	<b>Pre-Vacancy</b>	<b>Post-Vacancy</b>	<b>Percent</b>
1002 Federal Receipts	25,254,539	23,539,956	38.95%
1003 General Fund Match	39,465,179	36,785,807	60.86%
1004 General Fund Receipts	35,655	33,234	0.05%
1007 Interagency Receipts	12,208	11,379	0.02%
1108 Statutory Designated Program Receipts	78,128	72,823	0.12%
<b>Total PCN Funding:</b>	<b>64,845,709</b>	<b>60,443,200</b>	<b>100.00%</b>

Note: If a position is split, an asterisk (\*) will appear in the Split/Count column. If the split position is also counted in the component, two asterisks (\*\*) will appear in this column. [No valid job title] appearing in the Job Class Title indicates that the PCN has an invalid class code or invalid range for the class code effective date of this scenario.

Department of Family and Community Services  
 Office of Children's Services  
 Front Line Social Workers  
 Anchorage Regional Office

**Administrative Support Unit**

Administrative Operations  
 Manager 2  
 06-0621  
 R23 CL  
 Juneau

Administrative  
 Officer 1/2  
 06-3586  
 R17/19 CL  
 Anchorage

Office Assistant 2  
 06-9313  
 R10 CL  
 Anchorage

Administrative  
 Assistant 2  
 06-3161  
 R14 CL  
 Anchorage

Office Assistant 3  
 26-#TBD  
 R11 CL  
 Anchorage

Administrative  
 Assistant 2  
 06-4640  
 R14 CL  
 Anchorage

Office Assistant 2  
 06-9385  
 R10 CL  
 Anchorage

Office Assistant 3  
 06-4670  
 R11 CL  
 Anchorage

Accounting  
 Technician 1  
 06-3063  
 R12 CL  
 Anchorage

Office Assistant 2  
 06-4607  
 R10 CL  
 Anchorage

Office Assistant 1  
 06-4660  
 R8 CL  
 Anchorage

Office Assistant 2  
 06-3156  
 R10 CL  
 Anchorage

Office Assistant 1  
 06-3964  
 R8 CL  
 Anchorage

Office Assistant 1  
 06-3035  
 R8 CL  
 Anchorage

Office Assistant 2  
 06-3899  
 R10 CL  
 Anchorage

Office Assistant 1  
 06-3921  
 R8 CL  
 Anchorage

Office Assistant 1  
 06-3923  
 R8 CL  
 Anchorage

Office Assistant 1  
 06-3863  
 R8 CL  
 Anchorage

Office Assistant 1  
 06-9286  
 R8 CL  
 Anchorage

Office Assistant 1  
 06-3924  
 R8 CL  
 Anchorage

**Family Services**

Protective Services  
 Manager 2  
 06-4506  
 R22 CL  
 Anchorage

Protective Services  
 Manager 1  
 06-4633  
 R21 CL  
 Anchorage

Office Assistant 2  
 06-3082  
 R10 CL  
 Anchorage

Social Services  
 Associate  
 26-1020  
 R12 CL  
 Anchorage

Protective Services  
 Specialist 3  
 06-4504  
 R19 CL  
 Anchorage

Protective  
 Services  
 Specialist 4  
 26-#TBD  
 R20 CL  
 Anchorage

Protective  
 Services  
 Specialist 4  
 06-3928  
 R20 CL  
 Anchorage

Protective  
 Services  
 Specialist 4  
 06-4626  
 R20 CL  
 Anchorage

Protective  
 Services  
 Specialist 4  
 06-3430  
 R20 CL  
 Anchorage

Protective  
 Services  
 Specialist 4  
 06-3018  
 R20 CL  
 Anchorage

Protective  
 Services  
 Specialist 4  
 06-3125  
 R20 CL  
 Anchorage

Protective Services  
 Specialist 1/2  
 06-9279  
 R15/17 CL  
 Anchorage

Protective Services  
 Specialist 1/2  
 06-3425  
 R15/17 CL  
 Anchorage

Protective Services  
 Specialist 1/2  
 06-3712  
 R15/17 CL  
 Anchorage

Protective Services  
 Specialist 1/2  
 06-3216  
 R15/17 CL  
 Anchorage

Protective Services  
 Specialist 1/2  
 06-4543  
 R15/17 CL  
 Anchorage

Protective Services  
 Specialist 1/2  
 06-3431  
 R15/17 CL  
 Anchorage

Protective Services  
 Specialist 1/2  
 06-9155  
 R15/17 CL  
 Anchorage

Protective Services  
 Specialist 1/2  
 06-9267  
 R15/17 CL  
 Anchorage

Protective Services  
 Specialist 1/2  
 06-9282  
 R15/17 CL  
 Anchorage

Protective Services  
 Specialist 1/2  
 06-3931  
 R15/17 CL  
 Anchorage

Protective Services  
 Specialist 1/2  
 06-3432  
 R15/17 CL  
 Anchorage

Protective Services  
 Specialist 1/2  
 06-3929  
 R15/17 CL  
 Anchorage

Protective Services  
 Specialist 1/2  
 06-9370  
 R15/17 CL  
 Anchorage

Protective Services  
 Specialist 1/2  
 06-3869  
 R15/17 CL  
 Anchorage

Protective Services  
 Specialist 1/2  
 06-3409  
 R15/17 CL  
 Anchorage

Protective Services  
 Specialist 1/2  
 06-3076  
 R15/17 CL  
 Anchorage

Protective Services  
 Specialist 1/2  
 06-9390  
 R15/17 CL  
 Anchorage

Protective Services  
 Specialist 1/2  
 06-9366  
 R15/17 CL  
 Anchorage

Protective Services  
 Specialist 1/2  
 06-3100  
 R15/17 CL  
 Anchorage

Protective Services  
 Specialist 1/2  
 06-9381  
 R15/17 CL  
 Anchorage

Social Services  
 Associate  
 06-3390  
 R12 CL  
 Anchorage

Protective Services  
 Specialist 1/2  
 06-9335  
 R15/17 CL  
 Anchorage

Protective Services  
 Specialist 1/2  
 06-9270  
 R15/17 CL  
 Anchorage

Protective Services  
 Specialist 1/2  
 06-3098  
 R15/17 CL  
 Anchorage

Protective Services  
 Specialist 1/2  
 06-3417  
 R15/17 CL  
 Anchorage

Social Services  
 Associate  
 26-1013  
 R12 CL  
 Anchorage

Social Services  
 Associate  
 06-4622  
 R12 CL  
 Anchorage

Department of Family and Community Services  
 Office of Children's Services  
 Front Line Social Workers  
 Anchorage Regional Office (cont.)

Protective Services  
 Manager 2  
 06-4506  
 R22 CL  
 Anchorage

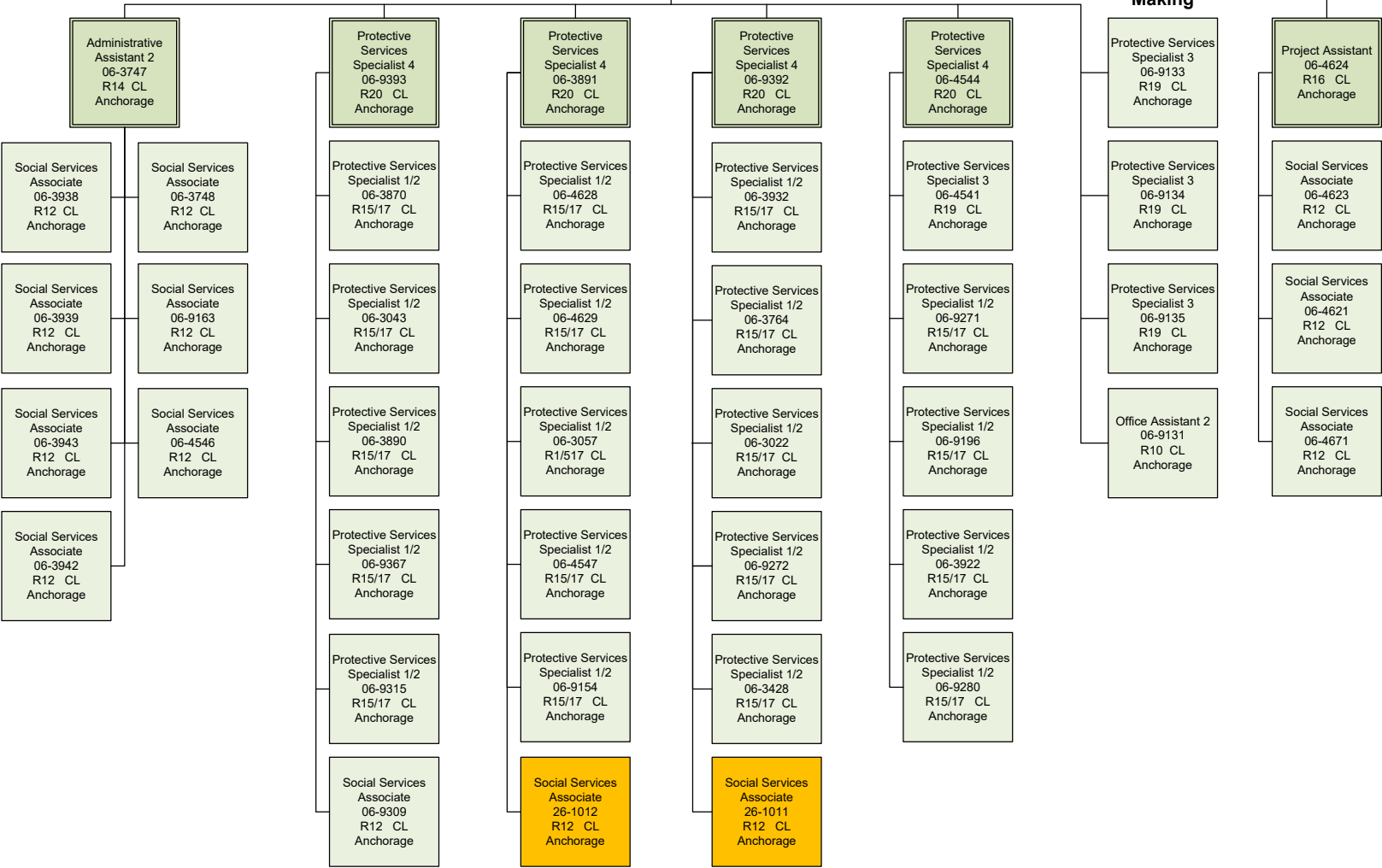
Protective Services  
 Manager 1  
 06-3878  
 R21 CL  
 Anchorage

**Family Services**

**Team Decision Making**

**ASPIN Unit**

Protective Services Specialist 3  
 06-4636  
 R19 CL  
 Juneau

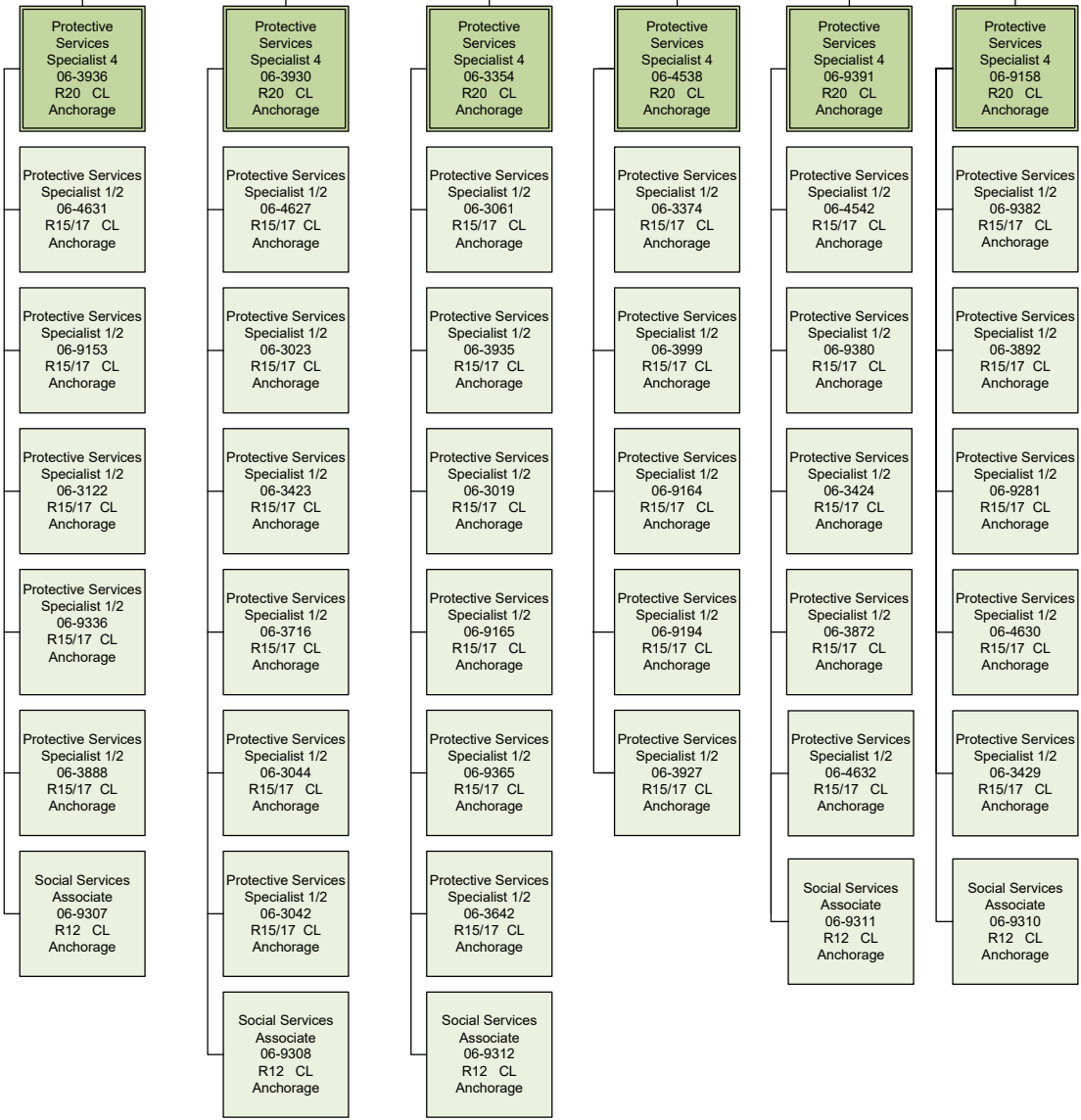


Department of Family and Community Services  
 Office of Children's Services  
 Front Line Social Workers  
 Anchorage Regional Office (cont.)

Protective Services  
 Manager 2  
 06-4506  
 R22 CL  
 Anchorage

Protective Services  
 Manager 1  
 06-3085  
 R21 CL  
 Anchorage

**Initial Assessments**



**ORCA Unit**

Data Processing  
 Manager 1  
 06-9304  
 R22 CL  
 Anchorage

Social Services  
 Program Coordinator  
 06-9168  
 R20 CL  
 Anchorage

Protective Services  
 Specialist 1-2  
 06-3926  
 R15/17 CL  
 Anchorage

Protective Services  
 Specialist 1-2  
 06-3934  
 R15/17 CL  
 Anchorage

Social Services  
 Program Coordinator  
 06-9171  
 R20 CL  
 Anchorage

**Eligibility Unit**

Social Services  
 Program Coordinator  
 06-3075  
 R20 CL  
 Juneau

Eligibility  
 Technician 4  
 06-8104  
 R17 CL  
 Anchorage

Eligibility  
 Technician 2  
 06-4645  
 R14 CL  
 Anchorage

Eligibility  
 Technician 2  
 06-8149  
 R14 CL  
 Anchorage

Eligibility  
 Technician 2  
 06-3026  
 R14 CL  
 Anchorage

Eligibility  
 Technician 2  
 06-3187  
 R14 CL  
 Anchorage

Eligibility  
 Technician 2  
 06-9339  
 R14 CL  
 Anchorage



Department of Family and Community Services  
 Office of Children's Services  
 Front Line Social Workers  
 Anchorage Regional Office (cont.)

Social Services  
 Program Administrator  
 06-4502  
 R23 CL  
 Anchorage

**Quality Assurance Unit**

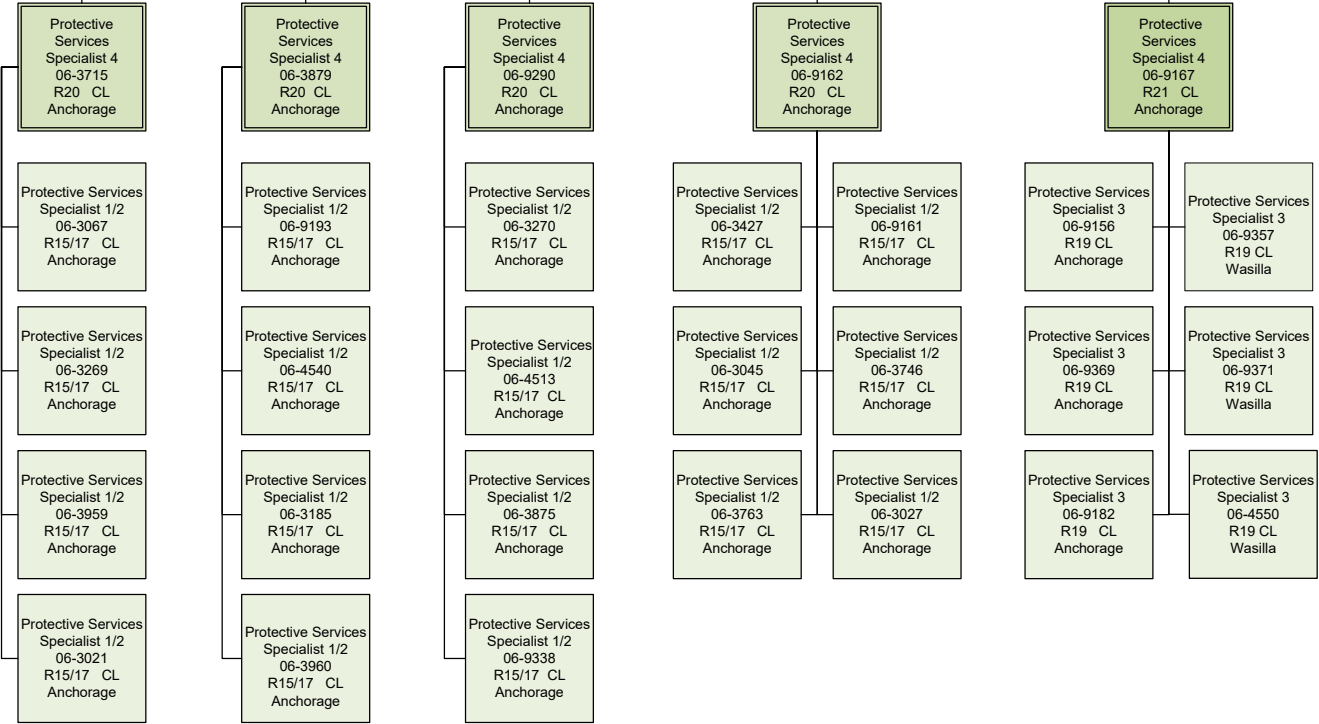
Protective Services  
 Manager 1  
 06-3792  
 R21 CL  
 Anchorage

**Centralized Intake**

**Mentor Team**

Social Services  
 Program Officer  
 06-3421  
 R21 CL  
 Anchorage

Social Services Program Coordinator 06-3937 R20 CL Anchorage	Social Services Program Coordinator 06-9318 R20 CL Anchorage
Social Services Program Coordinator 06-9320 R20 CL Anchorage	Social Services Program Coordinator 06-9145 R20 CL Anchorage
Social Services Program Coordinator 06-9319 R20 CL Anchorage	Research Analyst 3 06-1351 R18 CL Anchorage
Office Assistant 2 06-9316 R10 CL Anchorage	Office Assistant 2 06-9317 R10 CL Anchorage

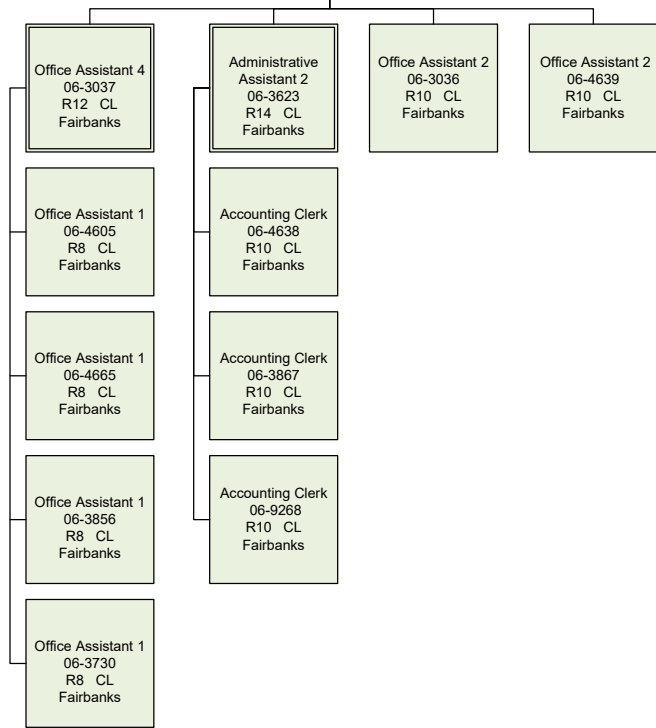


Department of Family and Community Services  
 Office of Children's Services  
 Front Line Social Workers  
 Northern Regional Office

### Administrative Support Unit

Administrative Operations  
 Manager 2  
 06-0621  
 R23 CL  
 Juneau

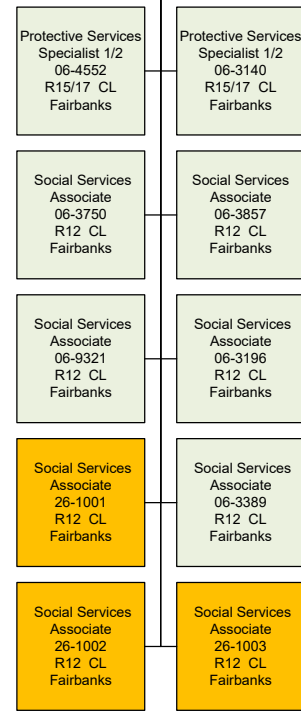
Administrative  
 Officer 1/2  
 06-3115  
 R17/19 CL  
 Fairbanks



### Permanency

Protective Services  
 Manager 2  
 06-4507  
 R22 CL  
 Anchorage

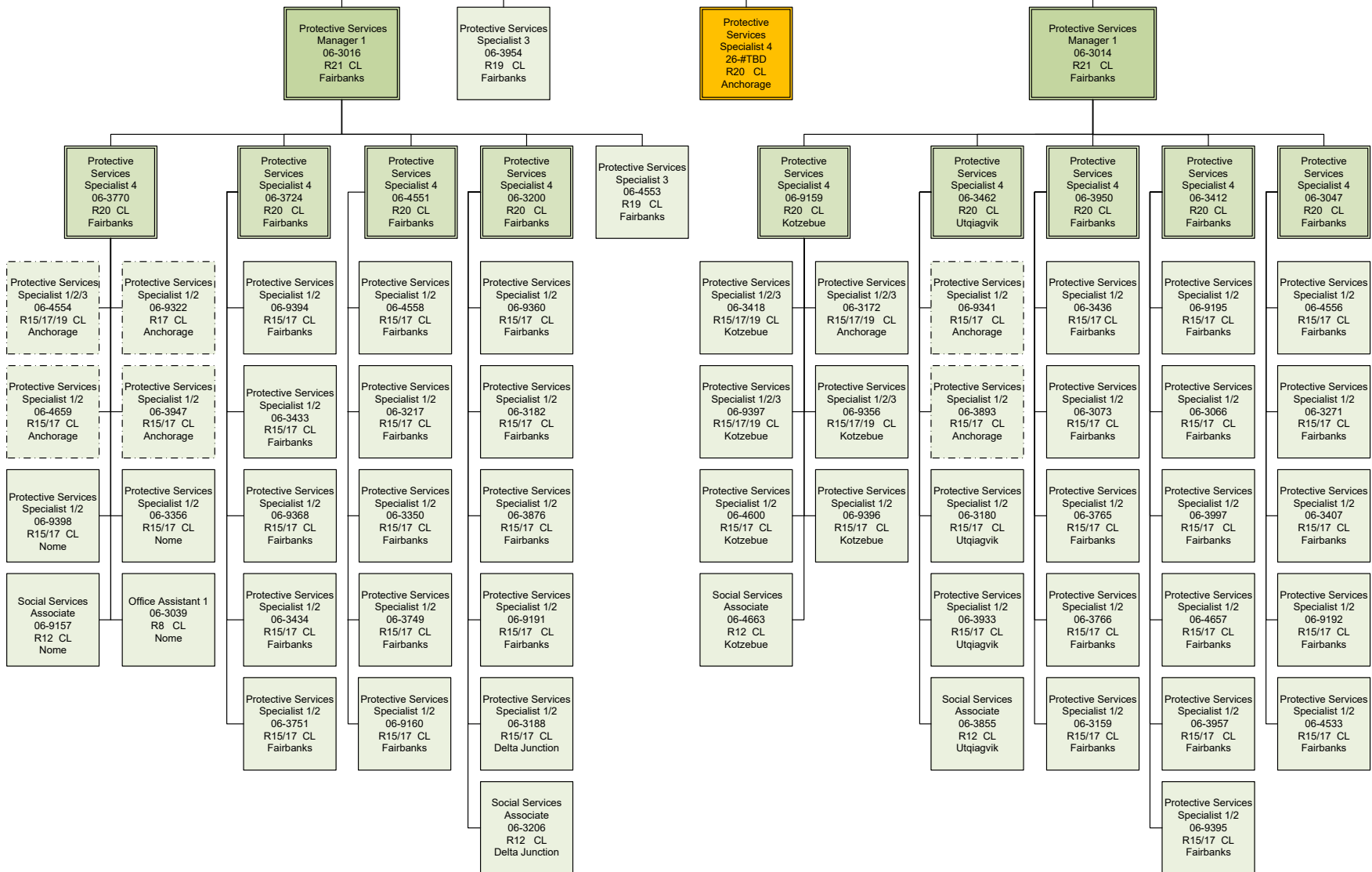
Protective Services  
 Specialist 4  
 06-3102  
 R20 CL  
 Fairbanks



Protective Services  
 Manager 2  
 06-4507  
 R22 CL  
 Anchorage

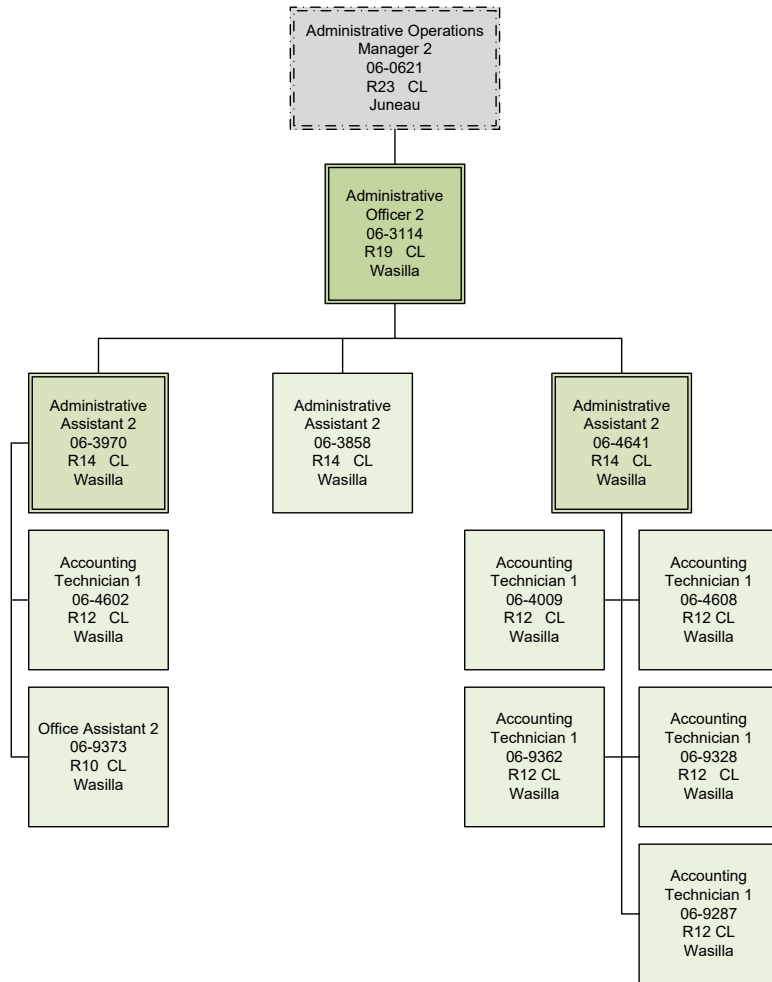
Initial Assessments

Family Services

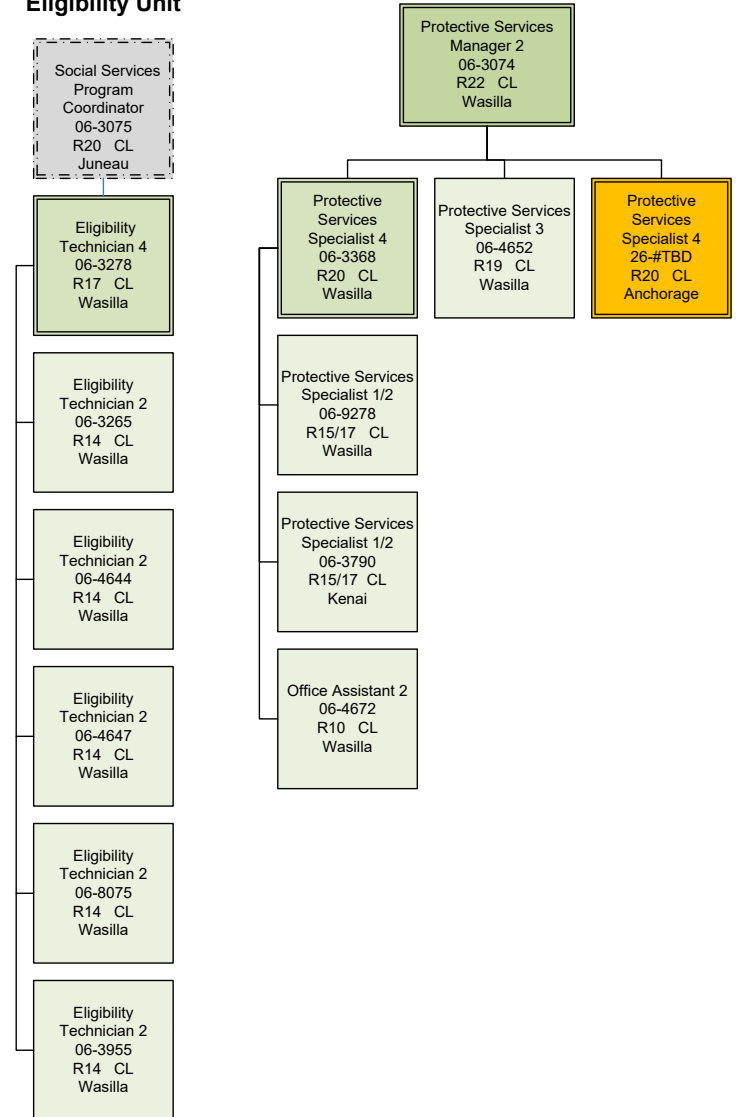


Department of Family and Community Services  
 Front Line Social Workers  
 Office of Children's Services  
 Southcentral Regional Office

**Administrative Unit**



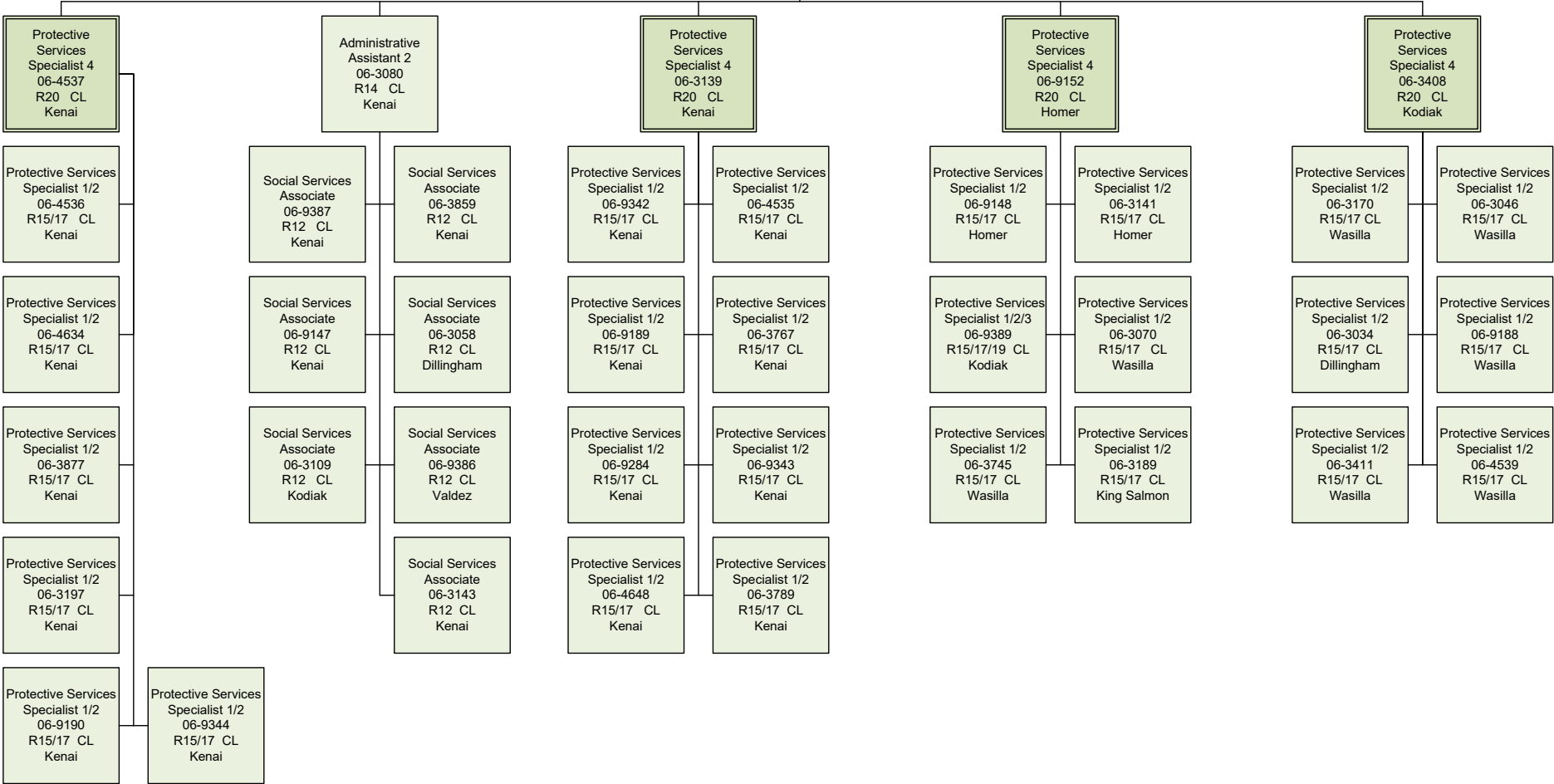
**Eligibility Unit**



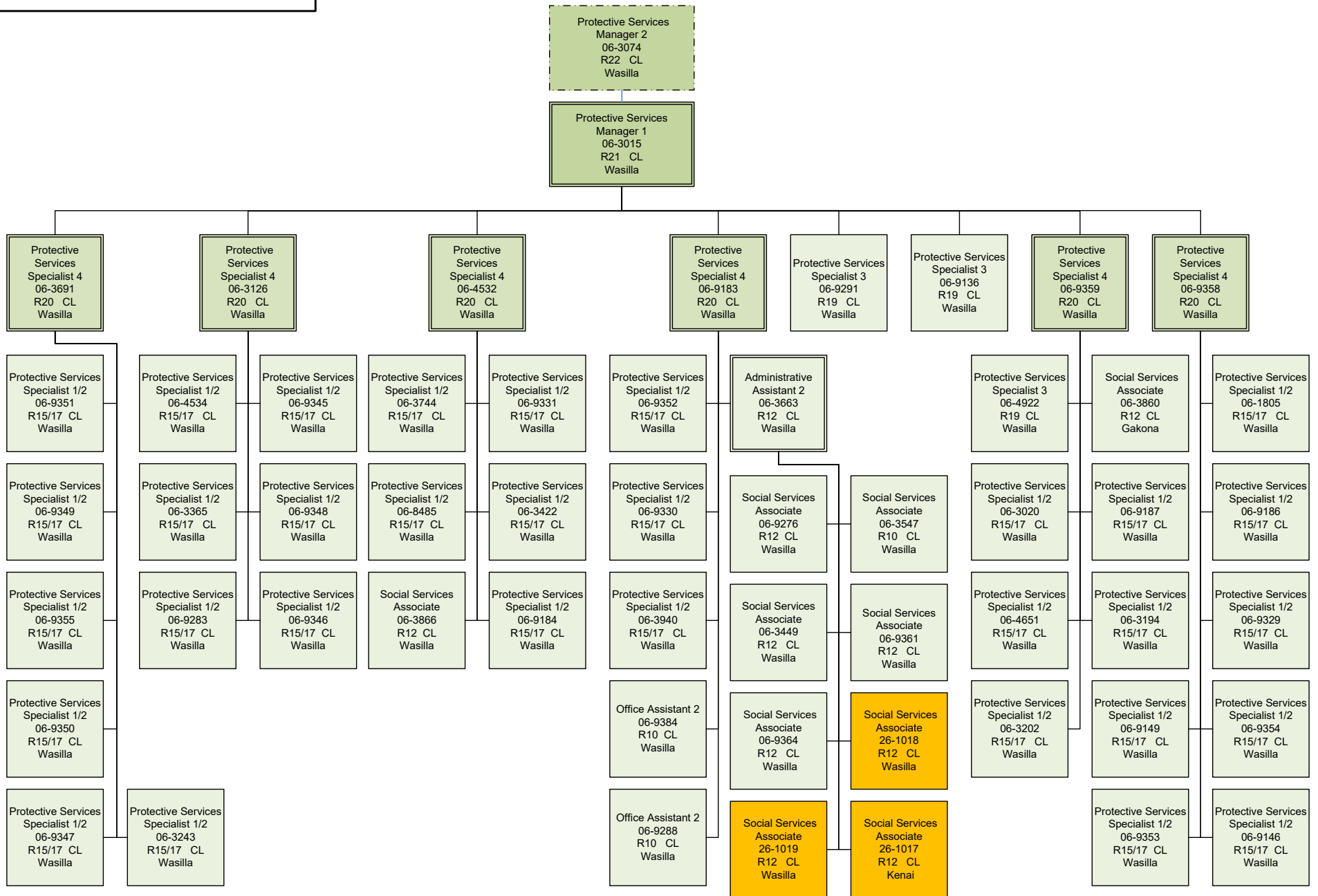
Department of Family and Community Services  
 Front Line Social Workers  
 Office of Children's Services  
 Southcentral Regional Office (cont.)

Protective Services  
 Manager 2  
 06-3074  
 R22 CL  
 Wasilla

Protective Services  
 Manager 1  
 06-9289  
 R21 CL  
 Kenai



Department of Family and Community Services  
 Front Line Social Workers  
 Office of Children's Services  
 Southcentral Regional Office (cont.)



**Administrative Support Unit**

Department of Family and Community Services  
Office of Children's Services  
Front Line Social Workers  
Southeast Regional Office

Administrative Officer 2  
06-0662  
R19 CL  
Juneau

Social Services Program Officer  
06-4614  
R21 CL  
Juneau

Administrative Officer 1  
06-3771  
R17 CL  
Juneau

Eligibility Technician 2  
06-4596  
R14 CL  
Juneau

Administrative Assistant 2  
06-3609  
R14 CL  
Juneau

Eligibility Technician 2  
06-4646  
R14 CL  
Juneau

Office Assistant 2  
06-3062  
R10 CL  
Juneau

Office Assistant 1  
06-3031  
R8 CL  
Juneau

Protective Services Manager 2  
06-4505  
R22 CL  
Juneau

Protective Services Manager 1  
06-3186  
R21 CL  
Juneau

Protective Services Specialist 3  
06-3069  
R19 CL  
Juneau

Protective Services Specialist 4  
06-3951  
R20 CL  
Juneau

Protective Services Specialist 4  
06-3743  
R20 CL  
Ketchikan

Protective Services Specialist 4  
06-3971  
R20 CL  
Juneau

Protective Services Specialist 4  
06-3192  
R20 CL  
Ketchikan

Protective Services Specialist 4  
06-3096  
R20 CL  
Juneau

Protective Services Specialist 4  
06-3465  
R20 CL  
Juneau

Protective Services Specialist 1/2  
06-3065  
R15/17 CL  
Juneau

Social Services Associate  
06-3108  
R12 CL  
Juneau

Social Services Associate  
06-3864  
R12 CL  
Juneau

Social Services Associate  
26-1008  
R12 CL  
Juneau

Protective Services Specialist 1/2  
06-3117  
R15/17 CL  
Ketchikan

Protective Services Specialist 1/2  
06-9374  
R15/17 CL  
Wrangell

Protective Services Specialist 1/2  
06-3195  
R15/17 CL  
Petersburg

Protective Services Specialist 1/2  
06-3029  
R15/17 CL  
Ketchikan

Protective Services Specialist 1/2  
06-9399  
R15/17 CL  
Craig

Protective Services Specialist 1/2  
06-3025  
R15/17 CL  
Juneau

Protective Services Specialist 1/2  
06-3897  
R15/17 CL  
Juneau

Protective Services Specialist 1/2  
06-3882  
R15/17 CL  
Juneau

Protective Services Specialist 1/2  
06-9323  
R15/17 CL  
Ketchikan

Protective Services Specialist 1/2  
06-3171  
R15/17 CL  
Sitka

Protective Services Specialist 1/2  
06-3048  
R15/17 CL  
Juneau

Protective Services Specialist 1/2  
06-3710  
R15/17 CL  
Ketchikan

Protective Services Specialist 1/2  
06-3403  
R15/17 CL  
Ketchikan

Protective Services Specialist 1/2  
06-3402  
R15/17 CL  
Juneau

Protective Services Specialist 1/2  
06-4658  
R15/17 CL  
Juneau

Protective Services Specialist 1/2  
06-3741  
R15/17 CL  
Juneau

Protective Services Specialist 1/2  
06-3873  
R15/17 CL  
Ketchikan

Social Services Associate  
06-9306  
R12 CL  
Craig

Social Services Associate  
06-9305  
R12 CL  
Sitka

Social Services Associate  
06-3966  
R12 CL  
Ketchikan

Protective Services Specialist 1/2  
06-3898  
R15/17 CL  
Juneau

Social Services Associate  
06-3154  
R12 CL  
Juneau

Protective Services Specialist 1/2  
06-3956  
R15/17 CL  
Juneau

Protective Services Specialist 1/2  
06-3862  
R15/17 CL  
Craig

Social Services Associate  
06-3030  
R12 CL  
Ketchikan

Social Services Associate  
06-9388  
R12 CL  
Petersburg

Protective Services Specialist 1/2  
06-3213  
R15/17 CL  
Juneau

Protective Services Specialist 1/2  
06-3708  
R15/17 CL  
Juneau

Department of Family and Community Services  
 Office of Children's Services  
 Front Line Social Workers  
 Western Regional Office

Protective Services  
 Manager 2  
 06-9296  
 R22 CL  
 Anchorage

Protective Services  
 Manager 1  
 06-3201  
 R21 CL  
 Bethel

Protective Services  
 Specialist 3  
 06-9303  
 R19 CL  
 Bethel

Protective Services  
 Specialist 4  
 26-#TBD  
 R20 CL  
 Anchorage

Protective Services  
 Specialist 4  
 06-3072  
 R20 CL  
 Bethel

Protective Services  
 Specialist 4  
 06-4548  
 R20 CL  
 Bethel

Protective Services  
 Specialist 4  
 06-3060  
 R20 CL  
 Anchorage

Protective Services  
 Specialist 4  
 06-3198  
 R20 CL  
 Bethel

Social Services  
 Associate  
 06-3191  
 R12 CL  
 Saint Mary's

Social Services  
 Associate  
 06-4664  
 R12 CL  
 Aniak

Protective Services  
 Specialist 1/2  
 06-3214  
 R15/17 CL  
 Bethel

Protective Services  
 Specialist 1/2  
 06-9292  
 R15/17 CL  
 Bethel

Protective Services  
 Specialist 1/2  
 06-9298  
 R15/17 CL  
 Bethel

Protective Services  
 Specialist 1/2  
 06-3895  
 R15/17 CL  
 Bethel

Protective Services  
 Specialist 1/2  
 06-4650  
 R15/17 CL  
 Bethel

Protective Services  
 Specialist 1/2  
 06-9297  
 R15/17 CL  
 Bethel

Social Services  
 Associate  
 06-4555  
 R12 CL  
 Bethel

Social Services  
 Associate  
 06-3179  
 R12 CL  
 Bethel

Protective Services  
 Specialist 1/2/3  
 06-9324  
 R15/17/19 CL  
 Anchorage

Protective Services  
 Specialist 1/2  
 06-9327  
 R15/17 CL  
 Anchorage

Protective Services  
 Specialist 1/2  
 06-3729  
 R15/17 CL  
 Bethel

Protective Services  
 Specialist 1/2  
 06-3880  
 R15/17 CL  
 Bethel

Protective Services  
 Specialist 1/2  
 06-4549  
 R15/17 CL  
 Anchorage

Protective Services  
 Specialist 1/2  
 06-9185  
 R15/17 CL  
 Anchorage

Social Services  
 Associate  
 06-3193  
 R12 CL  
 Bethel

Social Services  
 Associate  
 06-3064  
 R12 CL  
 Bethel

Protective Services  
 Specialist 1/2  
 06-9326  
 R15/17 CL  
 Anchorage

Protective Services  
 Specialist 1/2  
 06-9151  
 R15/17 CL  
 Bethel

Protective Services  
 Specialist 1/2  
 06-4649  
 R15/17 CL  
 Bethel

Protective Services  
 Specialist 1/2  
 06-3375  
 R15/17 CL  
 Anchorage

Social Services  
 Associate  
 26-1014  
 R12 CL  
 Bethel

Protective Services  
 Specialist 1/2  
 06-9325  
 R15/17 CL  
 Anchorage

Protective Services  
 Specialist 1/2/3  
 06-3205  
 R15/17/19 CL  
 Anchorage

Protective Services  
 Specialist 1/2  
 06-9150  
 R15/17 CL  
 Anchorage

Protective Services  
 Specialist 1/2  
 06-3900  
 R15/17 CL  
 Anchorage

Protective Services  
 Specialist 1/2  
 06-3896  
 R15/17 CL  
 Anchorage

**Administrative Support Unit**

Administrative  
 Officer 2  
 06-0662  
 R19 CL  
 Juneau

Administrative  
 Officer 1  
 06-9295  
 R17 CL  
 Bethel

Office Assistant 1  
 06-3164  
 R8 CL  
 Bethel

Office Assistant 1  
 06-3861  
 R8 CL  
 Bethel

**Permanency**

Protective Services  
 Specialist 4  
 06-3951  
 R20 CL  
 Juneau

Protective Services  
 Specialist 1/2/3  
 06-3894  
 R15/17/19 CL  
 Bethel



Department of Family and Community Services  
 Office of Children's Services  
 Front Line Social Workers  
 Foster Care Licensing / Independent Living  
 Program / Nursing

### Licensing Unit

Social Services Program  
 Officer  
 06-3068  
 R21 CL  
 Juneau

Community Care  
 Licensing Specialist 3  
 06-9273  
 R20 CL  
 Anchorage

Community Care  
 Licensing Specialist 3  
 06-4567  
 R20 CL  
 Fairbanks

Community Care  
 Licensing Specialist 2  
 06-9176  
 R18 CL  
 Anchorage

Community Care  
 Licensing Specialist 2  
 06-3176  
 R18 CL  
 Anchorage

Community Care  
 Licensing Specialist 2  
 06-9274  
 R18 CL  
 Kenai

Community Care  
 Licensing Specialist 2  
 06-3077  
 R18 CL  
 Wasilla

Community Care  
 Licensing Specialist 2  
 06-3370  
 R18 CL  
 Ketchikan

Community Care  
 Licensing Specialist 2  
 06-4524  
 R18 CL  
 Fairbanks

Community Care  
 Licensing Specialist 1  
 06-4545  
 R16 CL  
 Anchorage

Community Care  
 Licensing Specialist 1  
 06-3119  
 R16 CL  
 Anchorage

Community Care  
 Licensing Specialist 1  
 06-9178  
 R16 CL  
 Kenai

Community Care  
 Licensing Specialist 1  
 06-9177  
 R16 CL  
 Wasilla

Community Care  
 Licensing Specialist 1  
 06-9175  
 R16 CL  
 Juneau

Community Care  
 Licensing Specialist 1  
 06-3012  
 R16 CL  
 Bethel

Community Care  
 Licensing Specialist 1  
 06-3903  
 R16 CL  
 Anchorage

Community Care  
 Licensing Specialist 1  
 06-3976  
 R16 CL  
 Anchorage

Community Care  
 Licensing Specialist 1  
 06-3398  
 R16 CL  
 Kenai

Community Care  
 Licensing Specialist 1  
 06-9285  
 R16 CL  
 Wasilla

Community Care  
 Licensing Specialist 1  
 06-3367  
 R16 CL  
 Ketchikan

Community Care  
 Licensing Specialist 1  
 06-4819  
 R16 CL  
 Bethel

Community Care  
 Licensing Specialist 1  
 06-9173  
 R16 CL  
 Anchorage

Community Care  
 Licensing Specialist 1  
 06-9172  
 R16 CL  
 Anchorage

Community Care  
 Licensing Specialist 1  
 06-9179  
 R16 CL  
 Wasilla

Community Care  
 Licensing Specialist 1  
 06-9332  
 R16 CL  
 Wasilla

Community Care  
 Licensing Specialist 1  
 06-9180  
 R16 CL  
 Bethel

Community Care  
 Licensing Specialist 1  
 06-9337  
 R16 CL  
 Anchorage

Community Care  
 Licensing Specialist 1  
 06-3366  
 R16 CL  
 Anchorage

Community Care  
 Licensing Specialist 1  
 06-4653  
 R16 CL  
 Wasilla

Community Care  
 Licensing Specialist 1  
 06-9333  
 R16 CL  
 Wasilla

Community Care  
 Licensing Specialist 1  
 06-9174  
 R16 CL  
 Anchorage

Community Care  
 Licensing Specialist 1  
 06-3883  
 R16 CL  
 Anchorage

Social Services  
 Associate  
 06-3769  
 R12 CL  
 Wasilla

Social Services  
 Associate  
 06-9132  
 R12 CL  
 Anchorage

Office Assistant 2  
 06-3033  
 R10 CL  
 Anchorage

### Independent Living Unit

Protective Services  
 Specialist 4  
 06-1350  
 R20 CL  
 Juneau

Protective Services  
 Specialist 1/2  
 06-9143  
 R15/17 CL  
 Anchorage

Protective Services  
 Specialist 1/2  
 06-9302  
 R15/17 CL  
 Anchorage

Protective Services  
 Specialist 1/2  
 06-9142  
 R15/17 CL  
 Fairbanks

Protective Services  
 Specialist 1/2  
 06-9334  
 R15/17 CL  
 Wasilla

Protective Services  
 Specialist 1/2  
 06-9140  
 R15/17 CL  
 Wasilla

Protective Services  
 Specialist 1/2  
 06-9141  
 R15/17 CL  
 Juneau

Protective Services  
 Specialist 1/2  
 06-9301  
 R15/17 CL  
 Fairbanks

### Nursing Unit

Nurse  
 Consultant 2  
 06-4606  
 R26 CL  
 Anchorage

Nurse  
 Consultant 1  
 06-4601  
 R24 CL  
 Fairbanks

Nurse  
 Consultant 1  
 06-4603  
 R24 CL  
 Anchorage

Nurse  
 Consultant 1  
 06-4604  
 R24 CL  
 Wasilla

Mental Health  
 Clinician 4  
 26-#TBD  
 R23 CL  
 Anchorage

Mental Health  
 Clinician 3  
 06-4642  
 R21 CL  
 Anchorage

Project Assistant  
 06-4616  
 R16 CL  
 Anchorage

Office Assistant 2  
 06-9363  
 R10 CL  
 Wasilla