

Department of Family and Community Services  
Office of Children's Services  
Front Line Social Workers  
Anchorage Regional Office

**Administrative Support Unit**

Administrative Operations  
Manager 2  
06-0621  
R23 CL  
Juneau

Administrative  
Officer 1/2  
06-3586  
R17/19 CL  
Anchorage

Office Assistant 2  
06-9313  
R10 CL  
Anchorage

Administrative  
Assistant 2  
06-3161  
R14 CL  
Anchorage

Office Assistant 3  
26-#TBD  
R11 CL  
Anchorage

Administrative  
Assistant 2  
06-4640  
R14 CL  
Anchorage

Office Assistant 2  
06-9385  
R10 CL  
Anchorage

Office Assistant 3  
06-4670  
R11 CL  
Anchorage

Accounting  
Technician 1  
06-3063  
R12 CL  
Anchorage

Office Assistant 2  
06-4607  
R10 CL  
Anchorage

Office Assistant 1  
06-4660  
R8 CL  
Anchorage

Office Assistant 2  
06-3156  
R10 CL  
Anchorage

Office Assistant 1  
06-3964  
R8 CL  
Anchorage

Office Assistant 1  
06-3035  
R8 CL  
Anchorage

Office Assistant 2  
06-3899  
R10 CL  
Anchorage

Office Assistant 1  
06-3921  
R8 CL  
Anchorage

Office Assistant 1  
06-3923  
R8 CL  
Anchorage

Office Assistant 1  
06-3863  
R8 CL  
Anchorage

Office Assistant 1  
06-9286  
R8 CL  
Anchorage

Office Assistant 1  
06-3924  
R8 CL  
Anchorage

**Family Services**

Protective Services  
Manager 2  
06-4506  
R22 CL  
Anchorage

Protective Services  
Manager 1  
06-4633  
R21 CL  
Anchorage

Office Assistant 2  
06-3082  
R10 CL  
Anchorage

Social Services  
Associate  
26-1020  
R12 CL  
Anchorage

Protective Services  
Specialist 3  
06-4504  
R19 CL  
Anchorage

Protective  
Services  
Specialist 4  
26-#TBD  
R20 CL  
Anchorage

Protective  
Services  
Specialist 4  
06-3928  
R20 CL  
Anchorage

Protective  
Services  
Specialist 4  
06-4626  
R20 CL  
Anchorage

Protective  
Services  
Specialist 4  
06-3430  
R20 CL  
Anchorage

Protective  
Services  
Specialist 4  
06-3018  
R20 CL  
Anchorage

Protective  
Services  
Specialist 4  
06-3125  
R20 CL  
Anchorage

Protective Services  
Specialist 1/2  
06-9279  
R15/17 CL  
Anchorage

Protective Services  
Specialist 1/2  
06-3425  
R15/17 CL  
Anchorage

Protective Services  
Specialist 1/2  
06-3712  
R15/17 CL  
Anchorage

Protective Services  
Specialist 1/2  
06-3216  
R15/17 CL  
Anchorage

Protective Services  
Specialist 1/2  
06-4543  
R15/17 CL  
Anchorage

Protective Services  
Specialist 1/2  
06-3431  
R15/17 CL  
Anchorage

Protective Services  
Specialist 1/2  
06-9155  
R15/17 CL  
Anchorage

Protective Services  
Specialist 1/2  
06-9267  
R15/17 CL  
Anchorage

Protective Services  
Specialist 1/2  
06-9282  
R15/17 CL  
Anchorage

Protective Services  
Specialist 1/2  
06-3931  
R15/17 CL  
Anchorage

Protective Services  
Specialist 1/2  
06-3432  
R15/17 CL  
Anchorage

Protective Services  
Specialist 1/2  
06-3929  
R15/17 CL  
Anchorage

Protective Services  
Specialist 1/2  
06-9370  
R15/17 CL  
Anchorage

Protective Services  
Specialist 1/2  
06-3869  
R15/17 CL  
Anchorage

Protective Services  
Specialist 1/2  
06-3409  
R15/17 CL  
Anchorage

Protective Services  
Specialist 1/2  
06-3076  
R15/17 CL  
Anchorage

Protective Services  
Specialist 1/2  
06-9390  
R15/17 CL  
Anchorage

Protective Services  
Specialist 1/2  
06-9366  
R15/17 CL  
Anchorage

Protective Services  
Specialist 1/2  
06-3100  
R15/17 CL  
Anchorage

Protective Services  
Specialist 1/2  
06-9381  
R15/17 CL  
Anchorage

Social Services  
Associate  
06-3390  
R12 CL  
Anchorage

Protective Services  
Specialist 1/2  
06-9335  
R15/17 CL  
Anchorage

Protective Services  
Specialist 1/2  
06-9270  
R15/17 CL  
Anchorage

Protective Services  
Specialist 1/2  
06-3098  
R15/17 CL  
Anchorage

Protective Services  
Specialist 1/2  
06-3417  
R15/17 CL  
Anchorage

Social Services  
Associate  
26-1013  
R12 CL  
Anchorage

Social Services  
Associate  
06-4622  
R12 CL  
Anchorage

Department of Family and Community Services  
 Office of Children's Services  
 Front Line Social Workers  
 Anchorage Regional Office (cont.)

Protective Services  
 Manager 2  
 06-4506  
 R22 CL  
 Anchorage

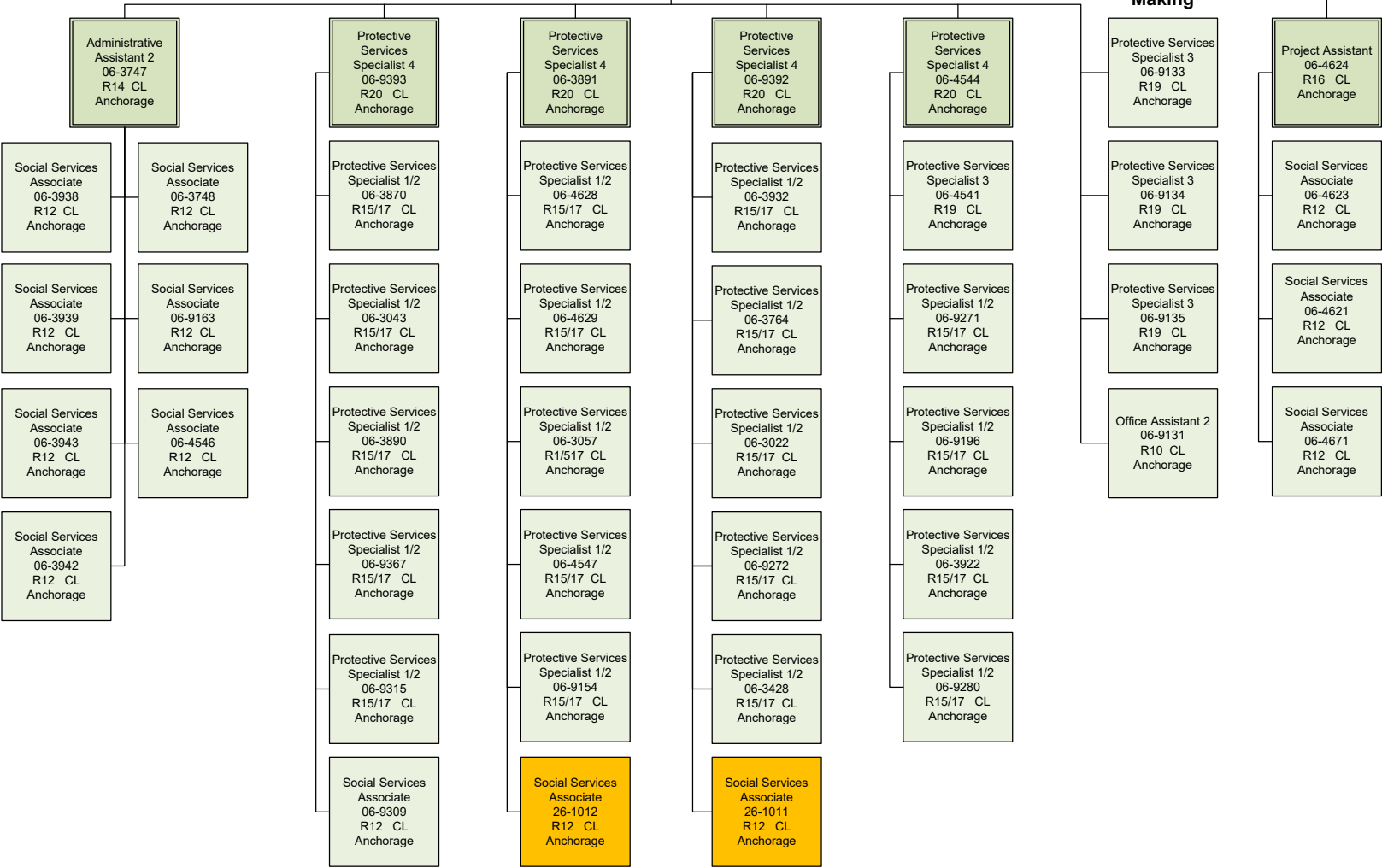
Protective Services  
 Manager 1  
 06-3878  
 R21 CL  
 Anchorage

**Family Services**

**Team Decision Making**

**ASPIN Unit**

Protective Services Specialist 3  
 06-4636  
 R19 CL  
 Juneau

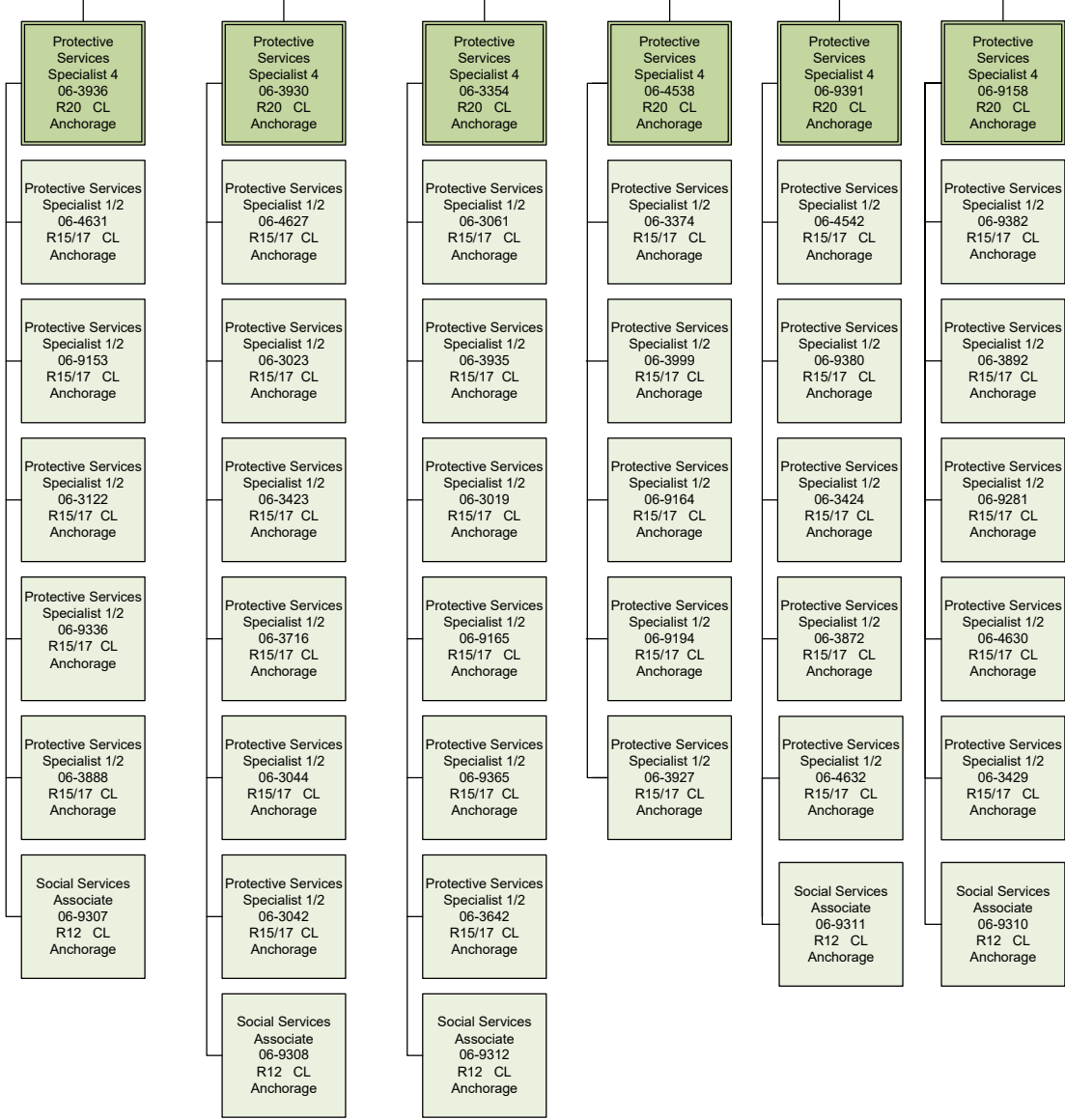


Department of Family and Community Services  
 Office of Children's Services  
 Front Line Social Workers  
 Anchorage Regional Office (cont.)

Protective Services  
 Manager 2  
 06-4506  
 R22 CL  
 Anchorage

Protective Services  
 Manager 1  
 06-3085  
 R21 CL  
 Anchorage

**Initial Assessments**



**ORCA Unit**

Data Processing  
 Manager 1  
 06-9304  
 R22 CL  
 Anchorage

Social Services  
 Program Coordinator  
 06-9168  
 R20 CL  
 Anchorage

Protective Services  
 Specialist 1-2  
 06-3926  
 R15/17 CL  
 Anchorage

Protective Services  
 Specialist 1-2  
 06-3934  
 R15/17 CL  
 Anchorage

Social Services  
 Program Coordinator  
 06-9171  
 R20 CL  
 Anchorage

**Eligibility Unit**

Social Services  
 Program Coordinator  
 06-3075  
 R20 CL  
 Juneau

Eligibility  
 Technician 4  
 06-8104  
 R17 CL  
 Anchorage

Eligibility  
 Technician 2  
 06-4645  
 R14 CL  
 Anchorage

Eligibility  
 Technician 2  
 06-8149  
 R14 CL  
 Anchorage

Eligibility  
 Technician 2  
 06-3026  
 R14 CL  
 Anchorage

Eligibility  
 Technician 2  
 06-3187  
 R14 CL  
 Anchorage

Eligibility  
 Technician 2  
 06-9339  
 R14 CL  
 Anchorage

Department of Family and Community Services  
 Office of Children's Services  
 Front Line Social Workers  
 Anchorage Regional Office (cont.)

Social Services  
 Program Administrator  
 06-4502  
 R23 CL  
 Anchorage

**Quality Assurance Unit**

Protective Services  
 Manager 1  
 06-3792  
 R21 CL  
 Anchorage

Social Services  
 Program Officer  
 06-3421  
 R21 CL  
 Anchorage

**Centralized Intake**

**Mentor Team**

Protective Services  
 Specialist 4  
 06-3715  
 R20 CL  
 Anchorage

Protective Services  
 Specialist 4  
 06-3879  
 R20 CL  
 Anchorage

Protective Services  
 Specialist 4  
 06-9290  
 R20 CL  
 Anchorage

Protective Services  
 Specialist 4  
 06-9162  
 R20 CL  
 Anchorage

Protective Services  
 Specialist 4  
 06-9167  
 R21 CL  
 Anchorage

Social Services  
 Program Coordinator  
 06-3937  
 R20 CL  
 Anchorage

Social Services  
 Program Coordinator  
 06-9318  
 R20 CL  
 Anchorage

Protective Services  
 Specialist 1/2  
 06-3067  
 R15/17 CL  
 Anchorage

Protective Services  
 Specialist 1/2  
 06-9193  
 R15/17 CL  
 Anchorage

Protective Services  
 Specialist 1/2  
 06-3270  
 R15/17 CL  
 Anchorage

Protective Services  
 Specialist 1/2  
 06-3427  
 R15/17 CL  
 Anchorage

Protective Services  
 Specialist 1/2  
 06-9161  
 R15/17 CL  
 Anchorage

Protective Services  
 Specialist 3  
 06-9156  
 R19 CL  
 Anchorage

Protective Services  
 Specialist 3  
 06-9357  
 R19 CL  
 Wasilla

Social Services  
 Program Coordinator  
 06-9320  
 R20 CL  
 Anchorage

Social Services  
 Program Coordinator  
 06-9145  
 R20 CL  
 Anchorage

Protective Services  
 Specialist 1/2  
 06-3269  
 R15/17 CL  
 Anchorage

Protective Services  
 Specialist 1/2  
 06-4540  
 R15/17 CL  
 Anchorage

Protective Services  
 Specialist 1/2  
 06-4513  
 R15/17 CL  
 Anchorage

Protective Services  
 Specialist 1/2  
 06-3045  
 R15/17 CL  
 Anchorage

Protective Services  
 Specialist 1/2  
 06-3746  
 R15/17 CL  
 Anchorage

Protective Services  
 Specialist 3  
 06-9369  
 R19 CL  
 Anchorage

Protective Services  
 Specialist 3  
 06-9371  
 R19 CL  
 Wasilla

Social Services  
 Program Coordinator  
 06-9319  
 R20 CL  
 Anchorage

Research Analyst 3  
 06-1351  
 R18 CL  
 Anchorage

Protective Services  
 Specialist 1/2  
 06-3959  
 R15/17 CL  
 Anchorage

Protective Services  
 Specialist 1/2  
 06-3185  
 R15/17 CL  
 Anchorage

Protective Services  
 Specialist 1/2  
 06-3875  
 R15/17 CL  
 Anchorage

Protective Services  
 Specialist 1/2  
 06-3763  
 R15/17 CL  
 Anchorage

Protective Services  
 Specialist 1/2  
 06-3027  
 R15/17 CL  
 Anchorage

Protective Services  
 Specialist 3  
 06-9182  
 R19 CL  
 Anchorage

Protective Services  
 Specialist 3  
 06-4550  
 R19 CL  
 Wasilla

Office Assistant 2  
 06-9316  
 R10 CL  
 Anchorage

Office Assistant 2  
 06-9317  
 R10 CL  
 Anchorage

Protective Services  
 Specialist 1/2  
 06-3021  
 R15/17 CL  
 Anchorage

Protective Services  
 Specialist 1/2  
 06-3960  
 R15/17 CL  
 Anchorage

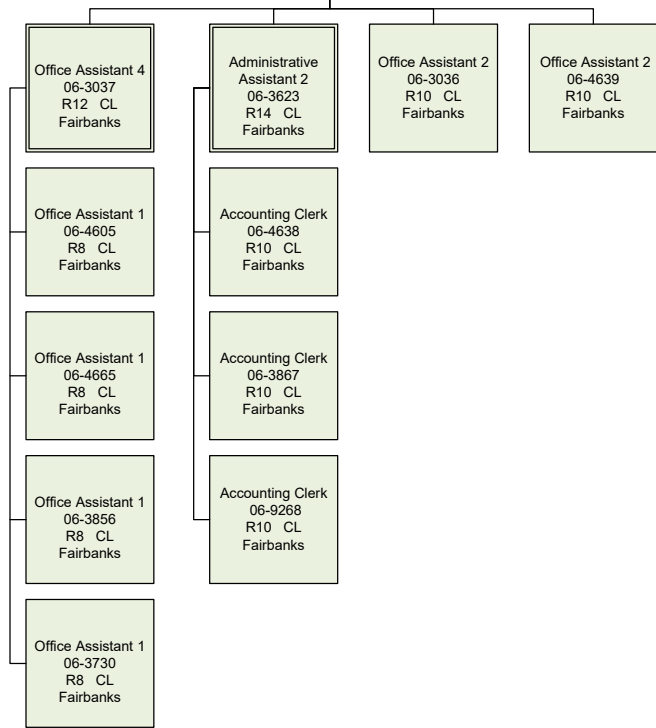
Protective Services  
 Specialist 1/2  
 06-9338  
 R15/17 CL  
 Anchorage

Department of Family and Community Services  
 Office of Children's Services  
 Front Line Social Workers  
 Northern Regional Office

**Administrative Support Unit**

Administrative Operations  
 Manager 2  
 06-0621  
 R23 CL  
 Juneau

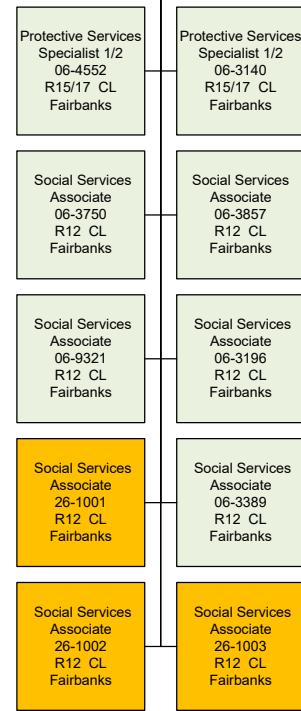
Administrative  
 Officer 1/2  
 06-3115  
 R17/19 CL  
 Fairbanks



**Permanency**

Protective Services  
 Manager 2  
 06-4507  
 R22 CL  
 Anchorage

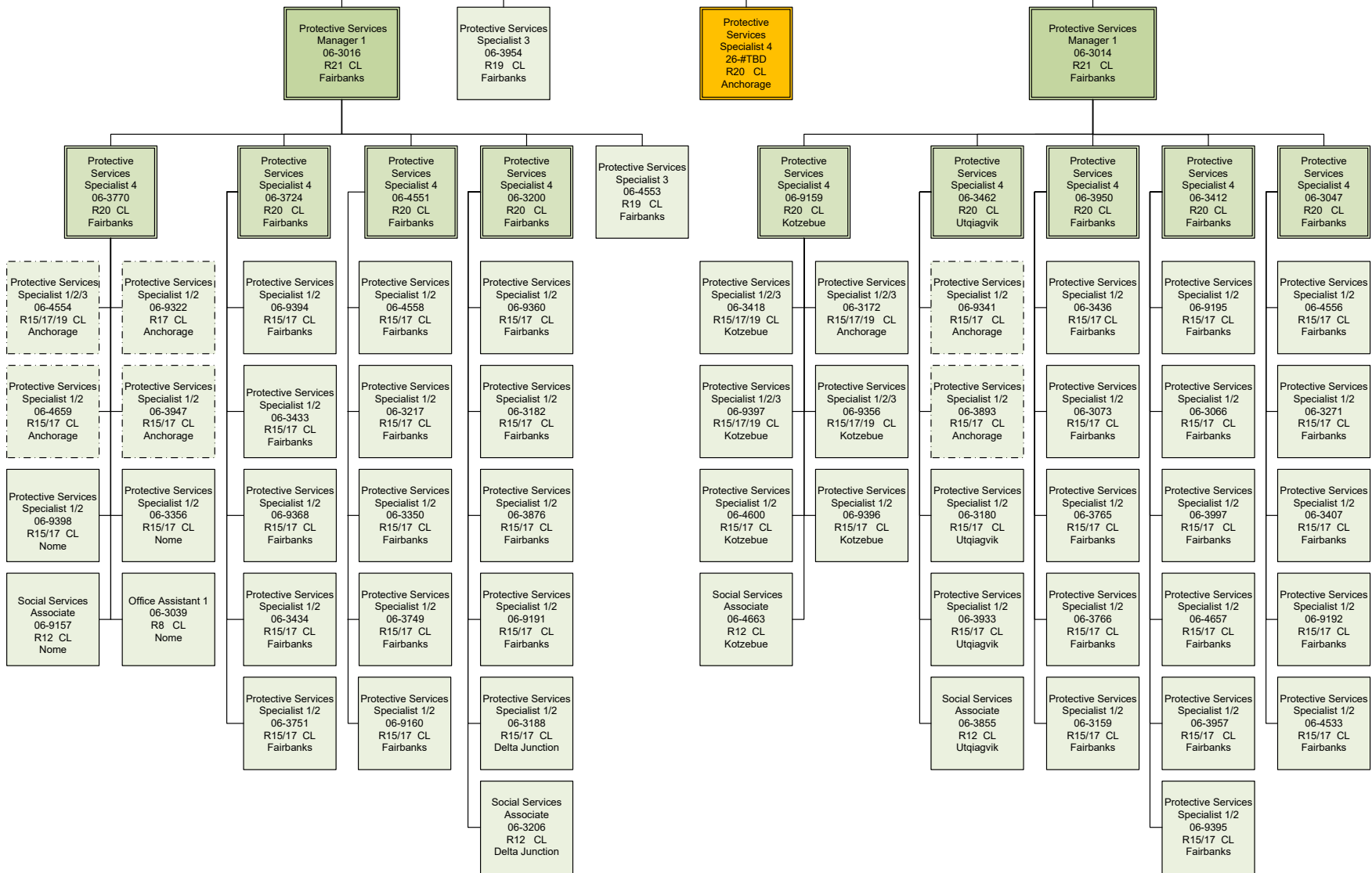
Protective Services  
 Specialist 4  
 06-3102  
 R20 CL  
 Fairbanks



Protective Services  
 Manager 2  
 06-4507  
 R22 CL  
 Anchorage

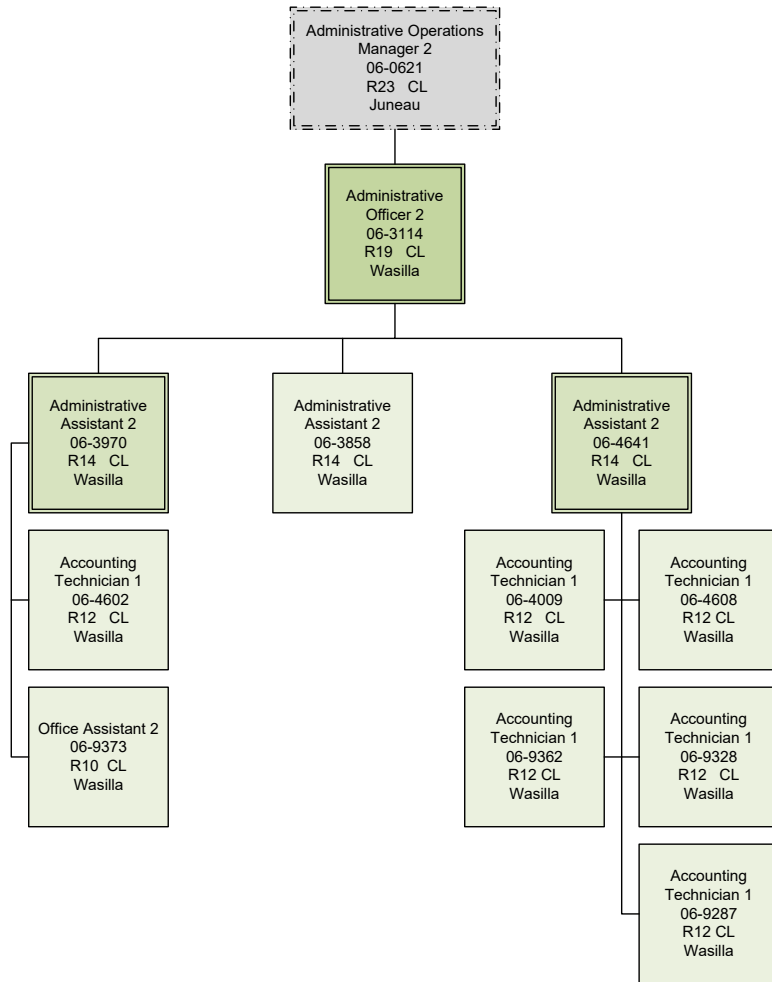
**Initial Assessments**

**Family Services**

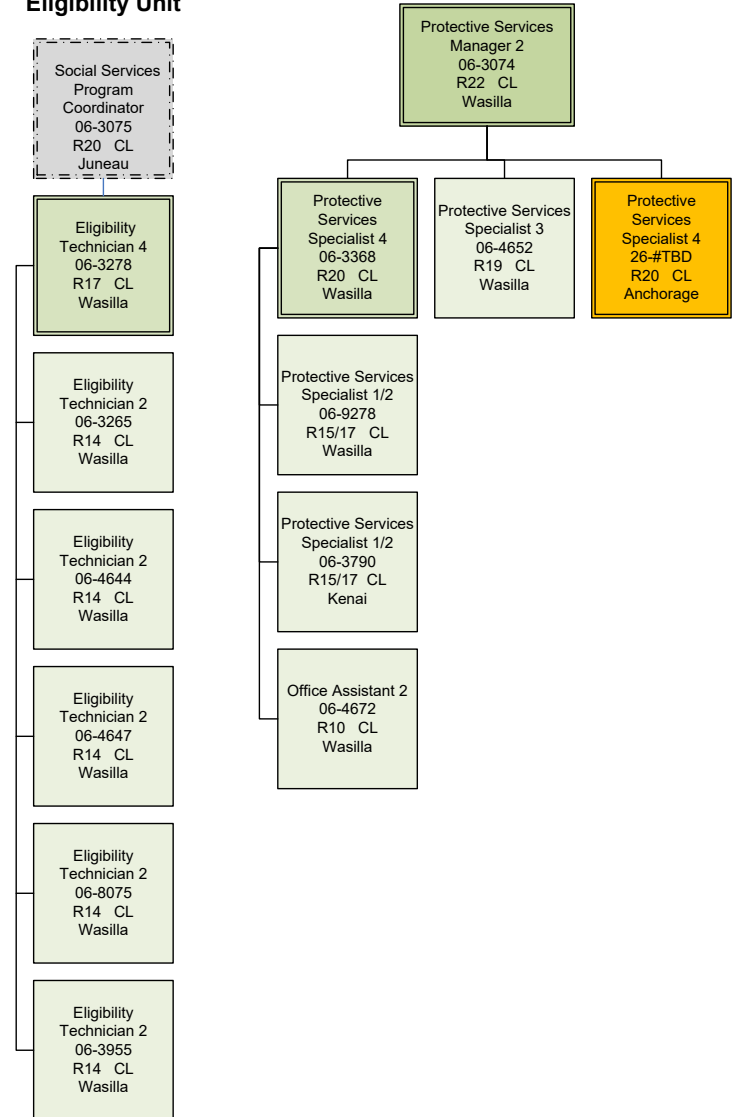


Department of Family and Community Services  
 Front Line Social Workers  
 Office of Children's Services  
 Southcentral Regional Office

**Administrative Unit**



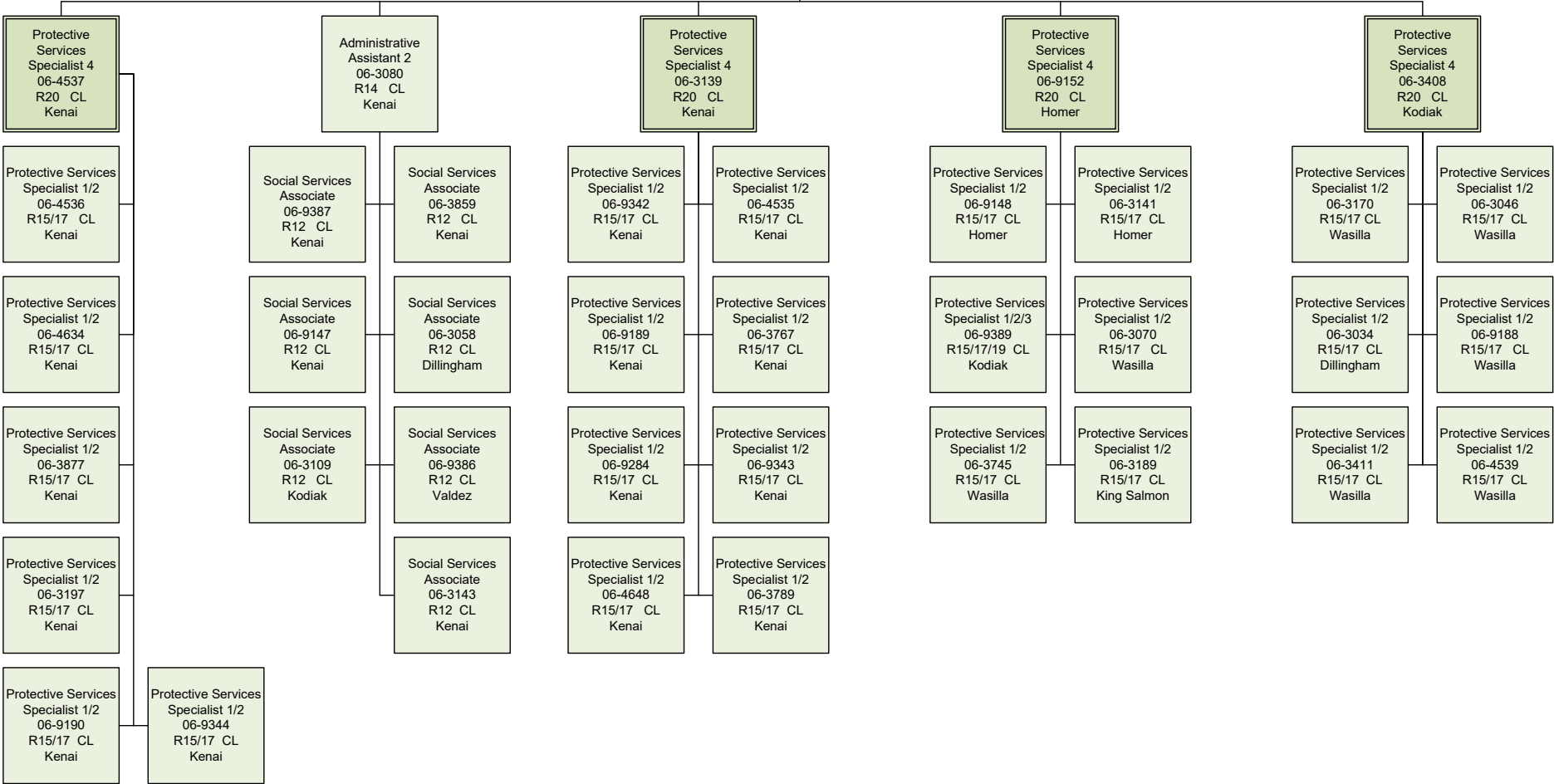
**Eligibility Unit**



Department of Family and Community Services  
 Front Line Social Workers  
 Office of Children's Services  
 Southcentral Regional Office (cont.)

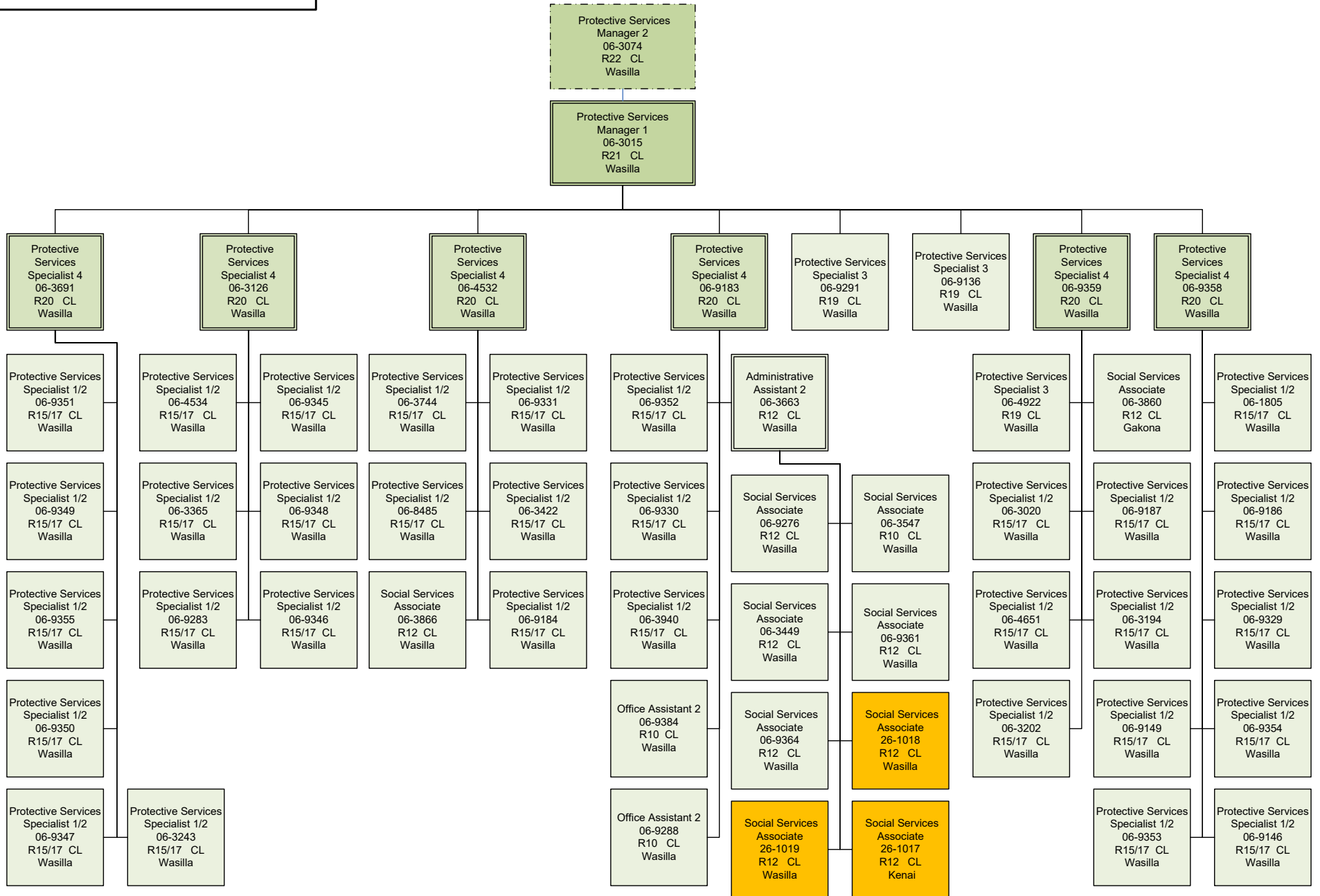
Protective Services  
 Manager 2  
 06-3074  
 R22 CL  
 Wasilla

Protective Services  
 Manager 1  
 06-9289  
 R21 CL  
 Kenai





Department of Family and Community Services  
 Front Line Social Workers  
 Office of Children's Services  
 Southcentral Regional Office (cont.)



**Administrative Support Unit**

Department of Family and Community Services  
Office of Children's Services  
Front Line Social Workers  
Southeast Regional Office

Administrative Officer 2  
06-0662  
R19 CL  
Juneau

Social Services Program Officer  
06-4614  
R21 CL  
Juneau

Administrative Officer 1  
06-3771  
R17 CL  
Juneau

Eligibility Technician 2  
06-4596  
R14 CL  
Juneau

Administrative Assistant 2  
06-3609  
R14 CL  
Juneau

Eligibility Technician 2  
06-4646  
R14 CL  
Juneau

Office Assistant 2  
06-3062  
R10 CL  
Juneau

Office Assistant 1  
06-3031  
R8 CL  
Juneau

Protective Services Manager 2  
06-4505  
R22 CL  
Juneau

Protective Services Manager 1  
06-3186  
R21 CL  
Juneau

Protective Services Specialist 3  
06-3069  
R19 CL  
Juneau

Protective Services Specialist 4  
06-3951  
R20 CL  
Juneau

Protective Services Specialist 4  
06-3743  
R20 CL  
Ketchikan

Protective Services Specialist 4  
06-3971  
R20 CL  
Juneau

Protective Services Specialist 4  
06-3192  
R20 CL  
Ketchikan

Protective Services Specialist 4  
06-3096  
R20 CL  
Juneau

Protective Services Specialist 4  
06-3465  
R20 CL  
Juneau

Protective Services Specialist 1/2  
06-3065  
R15/17 CL  
Juneau

Social Services Associate  
06-3108  
R12 CL  
Juneau

Social Services Associate  
06-3864  
R12 CL  
Juneau

Social Services Associate  
26-1008  
R12 CL  
Juneau

Protective Services Specialist 1/2  
06-3117  
R15/17 CL  
Ketchikan

Protective Services Specialist 1/2  
06-9374  
R15/17 CL  
Wrangell

Protective Services Specialist 1/2  
06-3195  
R15/17 CL  
Petersburg

Protective Services Specialist 1/2  
06-3029  
R15/17 CL  
Ketchikan

Protective Services Specialist 1/2  
06-9399  
R15/17 CL  
Craig

Protective Services Specialist 1/2  
06-3025  
R15/17 CL  
Juneau

Protective Services Specialist 1/2  
06-3897  
R15/17 CL  
Juneau

Protective Services Specialist 1/2  
06-3882  
R15/17 CL  
Juneau

Protective Services Specialist 1/2  
06-9323  
R15/17 CL  
Ketchikan

Protective Services Specialist 1/2  
06-3171  
R15/17 CL  
Sitka

Protective Services Specialist 1/2  
06-3048  
R15/17 CL  
Juneau

Protective Services Specialist 1/2  
06-3710  
R15/17 CL  
Ketchikan

Protective Services Specialist 1/2  
06-3403  
R15/17 CL  
Ketchikan

Protective Services Specialist 1/2  
06-3402  
R15/17 CL  
Juneau

Protective Services Specialist 1/2  
06-4658  
R15/17 CL  
Juneau

Protective Services Specialist 1/2  
06-3741  
R15/17 CL  
Juneau

Protective Services Specialist 1/2  
06-3873  
R15/17 CL  
Ketchikan

Social Services Associate  
06-9306  
R12 CL  
Craig

Social Services Associate  
06-9305  
R12 CL  
Sitka

Social Services Associate  
06-3966  
R12 CL  
Ketchikan

Protective Services Specialist 1/2  
06-3898  
R15/17 CL  
Juneau

Social Services Associate  
06-3154  
R12 CL  
Juneau

Protective Services Specialist 1/2  
06-3956  
R15/17 CL  
Juneau

Protective Services Specialist 1/2  
06-3862  
R15/17 CL  
Craig

Social Services Associate  
06-3030  
R12 CL  
Ketchikan

Social Services Associate  
06-9388  
R12 CL  
Petersburg

Protective Services Specialist 1/2  
06-3213  
R15/17 CL  
Juneau

Protective Services Specialist 1/2  
06-3708  
R15/17 CL  
Juneau

Department of Family and Community Services  
 Office of Children's Services  
 Front Line Social Workers  
 Western Regional Office

Protective Services  
 Manager 2  
 06-9296  
 R22 CL  
 Anchorage

Protective Services  
 Manager 1  
 06-3201  
 R21 CL  
 Bethel

Protective Services  
 Specialist 3  
 06-9303  
 R19 CL  
 Bethel

Protective Services  
 Specialist 4  
 26-#TBD  
 R20 CL  
 Anchorage

Protective Services  
 Specialist 4  
 06-3072  
 R20 CL  
 Bethel

Protective Services  
 Specialist 4  
 06-4548  
 R20 CL  
 Bethel

Protective Services  
 Specialist 4  
 06-3060  
 R20 CL  
 Anchorage

Protective Services  
 Specialist 4  
 06-3198  
 R20 CL  
 Bethel

Social Services  
 Associate  
 06-3191  
 R12 CL  
 Saint Mary's

Social Services  
 Associate  
 06-4664  
 R12 CL  
 Aniak

Social Services  
 Associate  
 06-4555  
 R12 CL  
 Bethel

Social Services  
 Associate  
 06-3179  
 R12 CL  
 Bethel

Social Services  
 Associate  
 06-3193  
 R12 CL  
 Bethel

Social Services  
 Associate  
 06-3064  
 R12 CL  
 Bethel

Social Services  
 Associate  
 26-1014  
 R12 CL  
 Bethel

Protective Services  
 Specialist 1/2  
 06-3214  
 R15/17 CL  
 Bethel

Protective Services  
 Specialist 1/2  
 06-9292  
 R15/17 CL  
 Bethel

Protective Services  
 Specialist 1/2  
 06-9298  
 R15/17 CL  
 Bethel

Protective Services  
 Specialist 1/2  
 06-3895  
 R15/17 CL  
 Bethel

Protective Services  
 Specialist 1/2  
 06-4650  
 R15/17 CL  
 Bethel

Protective Services  
 Specialist 1/2  
 06-9297  
 R15/17 CL  
 Bethel

Protective Services  
 Specialist 1/2/3  
 06-9324  
 R15/17/19 CL  
 Anchorage

Protective Services  
 Specialist 1/2  
 06-9327  
 R15/17 CL  
 Anchorage

Protective Services  
 Specialist 1/2  
 06-3729  
 R15/17 CL  
 Bethel

Protective Services  
 Specialist 1/2  
 06-3880  
 R15/17 CL  
 Bethel

Protective Services  
 Specialist 1/2  
 06-4549  
 R15/17 CL  
 Anchorage

Protective Services  
 Specialist 1/2  
 06-9185  
 R15/17 CL  
 Anchorage

Protective Services  
 Specialist 1/2  
 06-9326  
 R15/17 CL  
 Anchorage

Protective Services  
 Specialist 1/2  
 06-9151  
 R15/17 CL  
 Bethel

Protective Services  
 Specialist 1/2  
 06-4649  
 R15/17 CL  
 Bethel

Protective Services  
 Specialist 1/2  
 06-3375  
 R15/17 CL  
 Anchorage

Protective Services  
 Specialist 1/2  
 06-9325  
 R15/17 CL  
 Anchorage

Protective Services  
 Specialist 1/2/3  
 06-3205  
 R15/17/19 CL  
 Anchorage

Protective Services  
 Specialist 1/2  
 06-9150  
 R15/17 CL  
 Anchorage

Protective Services  
 Specialist 1/2  
 06-3900  
 R15/17 CL  
 Anchorage

Protective Services  
 Specialist 1/2  
 06-3896  
 R15/17 CL  
 Anchorage

**Administrative Support Unit**

Administrative  
 Officer 2  
 06-0662  
 R19 CL  
 Juneau

Administrative  
 Officer 1  
 06-9295  
 R17 CL  
 Bethel

Office Assistant 1  
 06-3164  
 R8 CL  
 Bethel

Office Assistant 1  
 06-3861  
 R8 CL  
 Bethel

**Permanency**

Protective Services  
 Specialist 4  
 06-3951  
 R20 CL  
 Juneau

Protective Services  
 Specialist 1/2/3  
 06-3894  
 R15/17/19 CL  
 Bethel

Department of Family and Community Services  
 Office of Children's Services  
 Front Line Social Workers  
 Foster Care Licensing / Independent Living  
 Program / Nursing

### Licensing Unit

Social Services Program  
 Officer  
 06-3068  
 R21 CL  
 Juneau

Community Care  
 Licensing Specialist 3  
 06-9273  
 R20 CL  
 Anchorage

Community Care  
 Licensing Specialist 3  
 06-4567  
 R20 CL  
 Fairbanks

Community Care  
 Licensing Specialist 2  
 06-9176  
 R18 CL  
 Anchorage

Community Care  
 Licensing Specialist 2  
 06-3176  
 R18 CL  
 Anchorage

Community Care  
 Licensing Specialist 2  
 06-9274  
 R18 CL  
 Kenai

Community Care  
 Licensing Specialist 2  
 06-3077  
 R18 CL  
 Wasilla

Community Care  
 Licensing Specialist 2  
 06-3370  
 R18 CL  
 Ketchikan

Community Care  
 Licensing Specialist 2  
 06-4524  
 R18 CL  
 Fairbanks

Community Care  
 Licensing Specialist 2  
 06-4567  
 R18 CL  
 Fairbanks

Community Care  
 Licensing Specialist 1  
 06-4545  
 R16 CL  
 Anchorage

Community Care  
 Licensing Specialist 1  
 06-3119  
 R16 CL  
 Anchorage

Community Care  
 Licensing Specialist 1  
 06-9178  
 R16 CL  
 Kenai

Community Care  
 Licensing Specialist 1  
 06-9177  
 R16 CL  
 Wasilla

Community Care  
 Licensing Specialist 1  
 06-9175  
 R16 CL  
 Juneau

Community Care  
 Licensing Specialist 1  
 06-3012  
 R16 CL  
 Bethel

Community Care  
 Licensing Specialist 1  
 06-4557  
 R16 CL  
 Fairbanks

Community Care  
 Licensing Specialist 1  
 06-3903  
 R16 CL  
 Anchorage

Community Care  
 Licensing Specialist 1  
 06-3976  
 R16 CL  
 Anchorage

Community Care  
 Licensing Specialist 1  
 06-3398  
 R16 CL  
 Kenai

Community Care  
 Licensing Specialist 1  
 06-9285  
 R16 CL  
 Wasilla

Community Care  
 Licensing Specialist 1  
 06-3367  
 R16 CL  
 Ketchikan

Community Care  
 Licensing Specialist 1  
 06-4819  
 R16 CL  
 Bethel

Community Care  
 Licensing Specialist 1  
 06-9181  
 R16 CL  
 Fairbanks

Community Care  
 Licensing Specialist 1  
 06-9173  
 R16 CL  
 Anchorage

Community Care  
 Licensing Specialist 1  
 06-9172  
 R16 CL  
 Anchorage

Community Care  
 Licensing Specialist 1  
 06-9179  
 R16 CL  
 Wasilla

Community Care  
 Licensing Specialist 1  
 06-9332  
 R16 CL  
 Wasilla

Community Care  
 Licensing Specialist 1  
 06-9180  
 R16 CL  
 Bethel

Community Care  
 Licensing Specialist 1  
 06-4655  
 R16 CL  
 Fairbanks

Community Care  
 Licensing Specialist 1  
 06-9337  
 R16 CL  
 Anchorage

Community Care  
 Licensing Specialist 1  
 06-3366  
 R16 CL  
 Anchorage

Community Care  
 Licensing Specialist 1  
 06-4653  
 R16 CL  
 Wasilla

Community Care  
 Licensing Specialist 1  
 06-9333  
 R16 CL  
 Wasilla

Community Care  
 Licensing Specialist 1  
 06-3369  
 R16 CL  
 Fairbanks

Community Care  
 Licensing Specialist 1  
 06-9174  
 R16 CL  
 Anchorage

Community Care  
 Licensing Specialist 1  
 06-3883  
 R16 CL  
 Anchorage

Social Services  
 Associate  
 06-3769  
 R12 CL  
 Wasilla

Social Services  
 Associate  
 06-9132  
 R12 CL  
 Anchorage

Office Assistant 2  
 06-3033  
 R10 CL  
 Anchorage

### Independent Living Unit

Protective Services  
 Specialist 4  
 06-1350  
 R20 CL  
 Juneau

Protective Services  
 Specialist 1/2  
 06-9143  
 R15/17 CL  
 Anchorage

Protective Services  
 Specialist 1/2  
 06-9302  
 R15/17 CL  
 Anchorage

Protective Services  
 Specialist 1/2  
 06-9142  
 R15/17 CL  
 Fairbanks

Protective Services  
 Specialist 1/2  
 06-9334  
 R15/17 CL  
 Wasilla

Protective Services  
 Specialist 1/2  
 06-9140  
 R15/17 CL  
 Wasilla

Protective Services  
 Specialist 1/2  
 06-9141  
 R15/17 CL  
 Juneau

Protective Services  
 Specialist 1/2  
 06-9301  
 R15/17 CL  
 Fairbanks

### Nursing Unit

Nurse  
 Consultant 2  
 06-4606  
 R26 CL  
 Anchorage

Nurse  
 Consultant 1  
 06-4601  
 R24 CL  
 Fairbanks

Nurse  
 Consultant 1  
 06-4603  
 R24 CL  
 Anchorage

Nurse  
 Consultant 1  
 06-4604  
 R24 CL  
 Wasilla

Mental Health  
 Clinician 4  
 26-#TBD  
 R23 CL  
 Anchorage

Mental Health  
 Clinician 3  
 06-4642  
 R21 CL  
 Anchorage

Project Assistant  
 06-4616  
 R16 CL  
 Anchorage

Office Assistant 2  
 06-9363  
 R10 CL  
 Wasilla