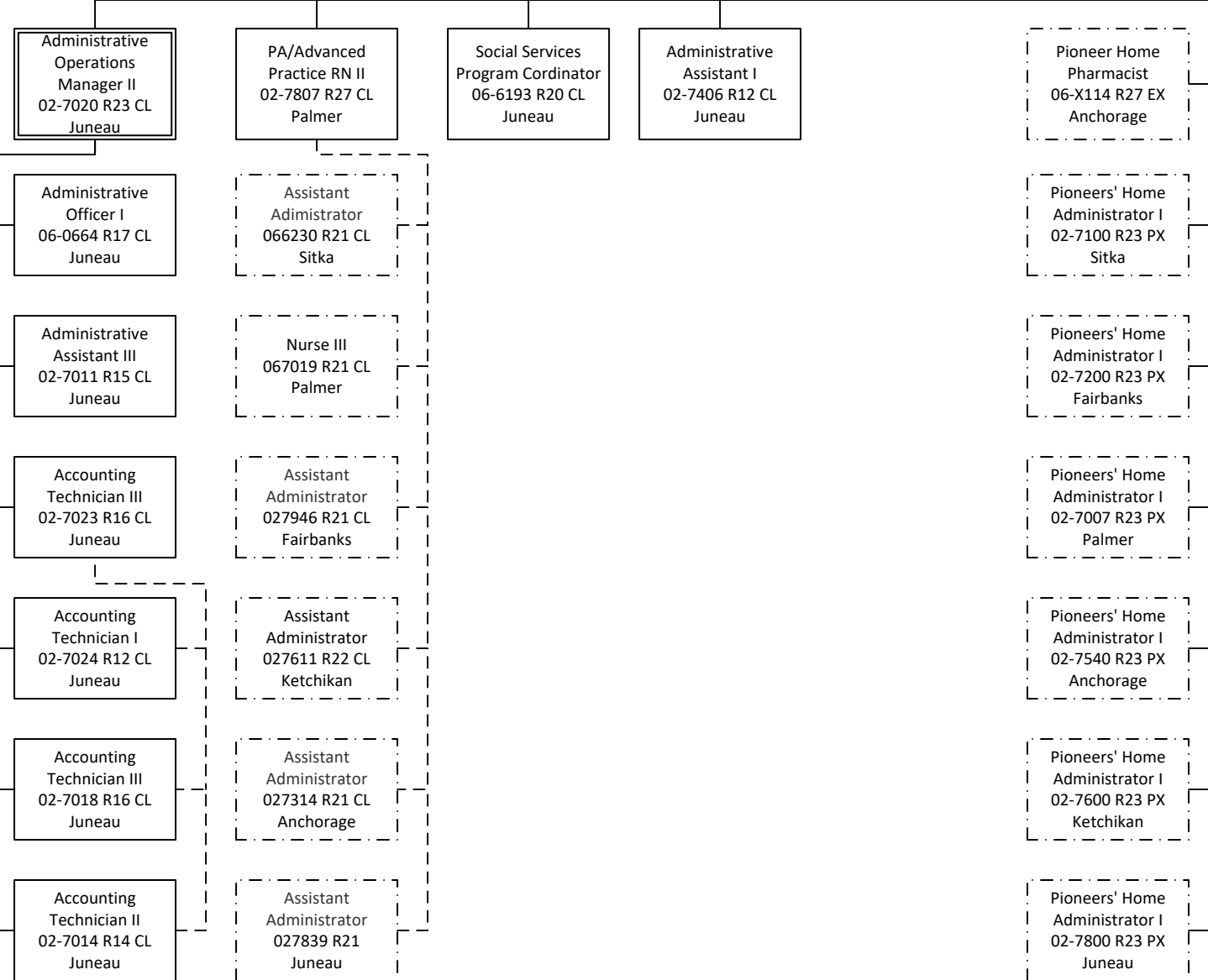


Department of Family and Community Services
Division of Alaska Pioneer Homes
Central Office
Alaska Pioneer Homes Management Component

DIVISION DIRECTOR
 02-7005 R27 PX
 Juneau

Administrative Team

Clinical Team



PCN Count
 Total: 11
 FT: 11
 NP: 0
 PT: 0