

# **State of Alaska FY2024 Governor's Operating Budget**

## **Department of Family and Community Services Pioneer Homes Component Budget Summary**

**Component: Pioneer Homes****Contribution to Department's Mission**

The Department of Family and Community Services has the mission " To provide support, safety, and personal well-being for vulnerable Alaskans." Alaska Pioneer Homes has been helping to promote and protect the health and well-being of Alaskans since the first home was established in 1913 by the First Territorial Legislature. The current division's mission summarizes this century-old commitment as "providing elder Alaskans a home and community, celebrating life through its final breath."

**Core Services**

- Provide a home, memory care, activities, food service, and personal care attendant services in Sitka, Fairbanks, Palmer, Anchorage, Ketchikan, and Juneau to Alaskan elders.
- Provide pharmaceutical services to Alaskan elders residing in the Sitka, Fairbanks, Anchorage, Ketchikan, and Juneau Pioneer Homes and in the Alaska Veterans and Pioneers Home in Palmer.

**Major Component Accomplishments in 2022**

- Served 601 elders in FY2022; just under 52.5 percent required level 4 and 5 level of care/service.
- The resident payer source was 39 percent private pay, 27 percent Medicaid Waiver, and 34 percent Payment Assistance through the Alaska Pioneer Homes.
- Maintained a 60 percent veteran occupancy at the Alaska Veterans and Pioneer Home in Palmer, providing a home for 68 veterans and 115 total residents.
- The Pioneer Home centralized pharmacy filled over 79,000 prescriptions for the Pioneer Homes Residents. Pioneer Home Pharmacy began filling prescriptions for Division of Juvenile Justice facilities, filled over 7,600 prescriptions for the youth.
- The fifth year of the Certified Nursing Aides Dementia Specialty Apprenticeship was successful with 14 apprentices completing the program for FY2022 and 20 apprentices in the program in FY2023. A total of 63 apprentices have completed the program to date.
- Continued to offer the Pharmacy Student Internship Program that provides on-site education for University of Southern California and Idaho State University through the University of Alaska Anchorage pharmacy students. In FY2022 we had 11 students intern at the Pioneer Home Pharmacy and hired one former student. The interns assist the pharmacy staff to develop and provide training opportunities for Pioneer Home staff.
- The Pioneer Homes have 21 certified Teepa Snow Trainers. Each Pioneer Home has at least two certified Teepa Snow Trainers to help increase the skills of staff working with elders suffering from dementia.
- The division made available twenty-two additional beds on the fourth floor of the Anchorage Pioneer Home. Nine of those beds are for those with complex behaviors. The division is also continuing to explore ways to best utilize this space to meet the needs of Alaska's vulnerable populations.
- Setup Wifi and cable television in each home that is free to the residents.

**Key Component Challenges**

- An increasing number of elders on the division's waitlist are requiring services at a higher level of care for assistance with activities of daily living, related to their dementia diagnosis, or chronic health care needs. Memory care and higher levels of service require a higher staffing ratio as well as accessible rooms and bathrooms. Staff are currently evaluating low-cost opportunities to add additional memory care or higher-level care beds.
- Continuously identifying areas of efficiencies for the five Pioneer Homes, the Alaska Veterans and Pioneers Home, and the centralized Pioneer Homes pharmacy.
- Developing ways to provide care for residents that have complex behaviors beyond the scope of what the Pioneer Homes have previously provided.
- Recruiting and retaining an adequate number of skilled direct care personnel with competencies in best practices for aging and dementia care and developing training to improve ability to meet the needs of more complex residents.

- Aging and older infrastructure in each of the homes needs to be addressed before more severe issues arise.

### Significant Changes in Results to be Delivered in FY2024

- Exploring options for HIPAA compliant communication systems that will allow staff to communicate with outside providers and within the division.
- Working on setting up State secured WiFi for staff use in charting resident care and services.
- Exploring options for a new Electronic Health Record System.
- Exploring options to improve the homes' security and call light notification systems to improve resident safety.
- The division is conducting a thorough review of organizational structure within each home to ensure efficiencies and alignment with best practices.

### Statutory and Regulatory Authority

AS 44.29.020(a)(15) Duties of the Department of Health and Social Services  
AS 47.55 Alaska Pioneers' Homes and Alaska Veterans' Home  
AS 44.29.500 Alaska Pioneer Homes Advisory Board  
7 AAC 74 Alaska Pioneers' Homes

Contact Information
<p><b>Contact:</b> Sylvan Robb, Division Director <b>Phone:</b> (907) 465-1630 <b>E-mail:</b> sylvan.robbs@alaska.gov</p>

Pioneer Homes Personal Services Information					
Authorized Positions			Personal Services Costs		
	FY2023 Management Plan	FY2024 Governor			
Full-time	412	411	Annual Salaries		26,764,507
Part-time	12	12	COLA		930,813
Nonpermanent	27	27	Premium Pay		1,954,635
			Annual Benefits		19,525,754
			Less 6.23% Vacancy Factor		(3,061,809)
			Lump Sum Premium Pay		0
<b>Totals</b>	<b>451</b>	<b>450</b>	<b>Total Personal Services</b>		<b>46,113,900</b>

Position Classification Summary					
Job Class Title	Anchorage	Fairbanks	Juneau	Others	Total
A/L Care Coord	1	1	1	1	4
Accounting Technician 3	1	0	0	0	1
Administrative Assistant 1	0	1	1	1	3
Administrative Assistant 3	1	1	1	3	6
Assisted Living Aide	12	13	10	27	62
Certified Nurse Aide 1	73	33	20	84	210
Certified Nurse Aide 2	5	3	0	7	15
Licensed Practical Nurse	15	4	5	8	32
Maint Gen Fman	1	1	1	3	6
Maint Gen Jrny	5	3	1	6	15
Med I/S Asst	1	0	0	2	3
Nurse 1	1	0	2	4	7
Nurse 2	9	7	0	18	34
Nurse 3	4	2	3	6	15
Office Assistant 2	1	0	0	0	1
Pharmacist (Adv Cert)	1	0	0	0	1
Pharmacist(Lead W/No Adv Cert)	1	0	0	0	1
Pharmacy Technician	3	0	0	0	3
Physical Therapist	1	0	0	0	1
Pio Hm Asst Adm	1	1	1	2	5
Pioneers Home Administrator	1	1	1	3	6
Pro Svcs Sp 1	0	1	0	1	2
Pro Svcs Sp 2	1	0	0	0	1
Pro Svcs Sp 3	1	1	1	3	6
Recreation Assistant	1	0	0	1	2
Recreation Therapist 1	0	0	0	1	1
Recreation Therapist 2	1	0	1	1	3
Supply Technician 2	1	1	0	2	4
<b>Totals</b>	<b>143</b>	<b>74</b>	<b>49</b>	<b>184</b>	<b>450</b>

**Component Detail All Funds**  
**Department of Family and Community Services**

**Component:** Pioneer Homes (3323)  
**RDU:** Alaska Pioneer Homes (503)

Non-Formula Component

	FY2022 Actuals	FY2023 Conference Committee	FY2023 Authorized	FY2023 Management Plan	FY2024 Governor	FY2023 Management Plan vs FY2024 Governor	
71000 Personal Services	0.0	45,274.2	45,338.3	45,069.4	46,113.9	1,044.5	2.3%
72000 Travel	0.0	14.7	14.7	14.7	14.7	0.0	0.0%
73000 Services	0.0	20,781.4	20,878.7	21,147.6	22,397.6	1,250.0	5.9%
74000 Commodities	0.0	2,906.0	2,906.0	2,906.0	2,906.0	0.0	0.0%
75000 Capital Outlay	0.0	95.6	95.6	95.6	95.6	0.0	0.0%
77000 Grants, Benefits	0.0	4.8	4.8	4.8	4.8	0.0	0.0%
78000 Miscellaneous	0.0	0.0	0.0	0.0	0.0	0.0	0.0%
<b>Totals</b>	<b>0.0</b>	<b>69,076.7</b>	<b>69,238.1</b>	<b>69,238.1</b>	<b>71,532.6</b>	<b>2,294.5</b>	<b>3.3%</b>
<b>Fund Sources:</b>							
1002 Fed Rcpts (Fed)	0.0	2,530.8	2,532.6	2,532.6	2,590.2	57.6	2.3%
1004 Gen Fund (UGF)	0.0	2,929.7	2,933.8	2,933.8	2,697.5	-236.3	-8.1%
1005 GF/Prgm (DGF)	0.0	20,134.7	20,214.5	20,214.5	21,930.2	1,715.7	8.5%
1007 I/A Rcpts (Other)	0.0	41,449.3	41,478.4	41,478.4	41,929.1	450.7	1.1%
1108 Stat Desig (Other)	0.0	2,032.2	2,078.8	2,078.8	2,385.6	306.8	14.8%
<b>Unrestricted General (UGF)</b>	<b>0.0</b>	<b>2,929.7</b>	<b>2,933.8</b>	<b>2,933.8</b>	<b>2,697.5</b>	<b>-236.3</b>	<b>-8.1%</b>
<b>Designated General (DGF)</b>	<b>0.0</b>	<b>20,134.7</b>	<b>20,214.5</b>	<b>20,214.5</b>	<b>21,930.2</b>	<b>1,715.7</b>	<b>8.5%</b>
<b>Other Funds</b>	<b>0.0</b>	<b>43,481.5</b>	<b>43,557.2</b>	<b>43,557.2</b>	<b>44,314.7</b>	<b>757.5</b>	<b>1.7%</b>
<b>Federal Funds</b>	<b>0.0</b>	<b>2,530.8</b>	<b>2,532.6</b>	<b>2,532.6</b>	<b>2,590.2</b>	<b>57.6</b>	<b>2.3%</b>
<b>Positions:</b>							
Permanent Full Time	0	409	409	412	411	-1	-0.2%
Permanent Part Time	0	15	15	12	12	0	0.0%
Non Permanent	0	26	26	27	27	0	0.0%

**Change Record Detail - Multiple Scenarios with Descriptions**  
**Department of Family and Community Services**

**Component:** Pioneer Homes (3323)  
**RDU:** Alaska Pioneer Homes (503)

Scenario/Change Record Title	Trans Type	Totals	Personal Services	Travel	Services	Commodities	Capital Outlay	Grants, Benefits	Miscellaneous	Positions		NP
										PFT	PPT	
<b>***** Changes From FY2023 Conference Committee To FY2023 Authorized *****</b>												
<b>FY2023 Conference Committee</b>												
	ConfCom	69,076.7	45,274.2	14.7	20,781.4	2,906.0	95.6	4.8	0.0	409	15	26
1002 Fed Rcpts		2,530.8										
1004 Gen Fund		2,929.7										
1005 GF/Prgm		20,134.7										
1007 I/A Rcpts		41,449.3										
1108 Stat Desig		2,032.2										
<b>Align Authority for Unallocated Rates Adjustment</b>												
	Unalloc	97.3	0.0	0.0	97.3	0.0	0.0	0.0	0.0	0	0	0
1005 GF/Prgm		51.1										
1108 Stat Desig		46.2										
Distribute the unallocated rates adjustment throughout the department to the divisions that will use the fund sources.												
\$46.2 State Designated Program Receipts -- Alaska Pioneer Homes; Pioneer Homes												
\$51.1 General Fund Program Receipts -- Alaska Pioneer Homes; Pioneer Homes												
<b>FY2023 Exempt 5% COLA</b>												
	SalAdj	64.1	64.1	0.0	0.0	0.0	0.0	0.0	0.0	0	0	0
1002 Fed Rcpts		1.8										
1004 Gen Fund		4.1										
1005 GF/Prgm		28.7										
1007 I/A Rcpts		29.1										
1108 Stat Desig		0.4										
FY2023 Exempt 5% COLA: \$64.1												
<b>Subtotal</b>		<b>69,238.1</b>	<b>45,338.3</b>	<b>14.7</b>	<b>20,878.7</b>	<b>2,906.0</b>	<b>95.6</b>	<b>4.8</b>	<b>0.0</b>	<b>409</b>	<b>15</b>	<b>26</b>
<b>***** Changes From FY2023 Authorized To FY2023 Management Plan *****</b>												
<b>Align Authority with Anticipated Expenditures</b>												
	LIT	0.0	-268.9	0.0	268.9	0.0	0.0	0.0	0.0	0	0	0
Transfer authority from personal services to cover anticipated services costs. The remaining personal services authority is sufficient to cover anticipated expenditures.												
<b>Add Non-Permanent Nurse 2 (06-N22123) for Anchorage Pioneer Homes</b>												
	PosAdj	0.0	0.0	0.0	0.0	0.0	0.0	0.0	0.0	0	0	1

**Change Record Detail - Multiple Scenarios with Descriptions**  
**Department of Family and Community Services**

**Component:** Pioneer Homes (3323)  
**RDU:** Alaska Pioneer Homes (503)

Scenario/Change Record Title	Trans Type	Totals	Personal Services	Travel	Services	Commodities	Capital Outlay	Grants, Benefits	Miscellaneous	Positions		NP
										PFT	PPT	
<p>The Anchorage Pioneer Home needs flexibility in staffing to continue to provide direct care to residents in the Pioneer Homes while staff are out due to personal leave, vacancies, illness, etc. The new non-permanent on-call position will reduce the premium pay costs as nurses will not have to work overtime at the Anchorage Pioneer Home in order to provide direct care to residents.</p> <p>The following position is added:                      - Non-permanent on-call Nurse 2, (06-N22123), range 22, located in Anchorage</p>												
<b>Change Certified Nurse Aide 1 (02-7464 and 02-7840) from Part-Time to Full-Time</b>	PosAdj	0.0	0.0	0.0	0.0	0.0	0.0	0.0	0.0	2	-2	0
<p>Change status of two Certified Nurse Aide 1 (02-7464 and 02-7840) from part-time to full-time. These positions will provide full-time care to residents on the fourth floor Anchorage Pioneer Home where the remodel is nearing completion.</p>												
<b>Change Licensed Practical Nurse/Nurse1/Nurse2 (06-6188) from Part-Time to Full-Time</b>	PosAdj	0.0	0.0	0.0	0.0	0.0	0.0	0.0	0.0	1	-1	0
<p>Change Licensed Practical Nurse/Nurse1/Nurse2 (06-6188) from part-time to full-time to reduce on-call and overtime hours in providing direct care to residents.</p>												
<b>Subtotal</b>		<b>69,238.1</b>	<b>45,069.4</b>	<b>14.7</b>	<b>21,147.6</b>	<b>2,906.0</b>	<b>95.6</b>	<b>4.8</b>	<b>0.0</b>	<b>412</b>	<b>12</b>	<b>27</b>
***** <b>Changes From FY2023 Management Plan To FY2024 Governor</b> *****												
<b>Align Authority with Resident Population</b>	FndChg	0.0	0.0	0.0	0.0	0.0	0.0	0.0	0.0	0	0	0
1004 Gen Fund		-300.0										
1108 Stat Desig		300.0										
<p>Align statutory designated receipt authority with anticipated revenues collected as the Pioneer Home increases its resident population and subsequent payments from private insurance.</p>												
<b>Delete Vacant Certified Nurse Aide 1 (02-7801)</b>	PosAdj	0.0	0.0	0.0	0.0	0.0	0.0	0.0	0.0	-1	0	0
<p>Delete a long-term vacant Certified Nurse Aide 1 (02-7801), range 11, located in Juneau. This position has been vacant since January 2021.</p>												
<b>FY2024 PERS Rate Adjustment</b>	SalAdj	80.4	80.4	0.0	0.0	0.0	0.0	0.0	0.0	0	0	0
1002 Fed Rcpts		4.4										
1004 Gen Fund		4.9										
1005 GF/Prgm		35.9										
1007 I/A Rcpts		34.7										
1108 Stat Desig		0.5										

**Change Record Detail - Multiple Scenarios with Descriptions**  
**Department of Family and Community Services**

**Component:** Pioneer Homes (3323)  
**RDU:** Alaska Pioneer Homes (503)

Scenario/Change Record Title	Trans Type	Totals	Personal Services	Travel	Services	Commodities	Capital Outlay	Grants, Benefits	Miscellaneous	Positions		NP
										PFT	PPT	
FY2024 PERS rate adjustment to 25.10%: \$80.4												
<b>FY2024 Salary and Health Insurance Increases</b>												
	SalAdj	954.3	954.3	0.0	0.0	0.0	0.0	0.0	0.0	0	0	0
1002 Fed Rcpts		52.8										
1004 Gen Fund		58.2										
1005 GF/Prgm		425.4										
1007 I/A Rcpts		411.7										
1108 Stat Desig		6.2										
FY2024 Salary and Health Insurance Increases: \$954.3												
FY2024 GGU cost of living increase 2.5%: \$794.7												
FY2024 LTC cost of living increase 3.25%: \$61.5												
FY2024 SU cost of living increase 1%: \$34.5												
FY2024 AlaskaCare insurance from \$1,685 to \$1,793 per member per month.: \$33.1												
FY2024 GGU health insurance increase from \$1,567.50 to \$1,573.50 per member per month.: \$24.5												
FY2024 LTC health insurance increase from \$1,580 to \$1,605 per member per month.: \$6.0												
<b>FY2024 AlaskaCare Health Insurance Increase - Exempt and Partially Exempt</b>												
	SalAdj	9.8	9.8	0.0	0.0	0.0	0.0	0.0	0.0	0	0	0
1002 Fed Rcpts		0.4										
1004 Gen Fund		0.6										
1005 GF/Prgm		4.4										
1007 I/A Rcpts		4.3										
1108 Stat Desig		0.1										
FY2024 AlaskaCare health insurance increase for exempt and partially exempt employees from \$1,685 to \$1,793 per member per month.: \$9.8												
<b>Pioneer Home Residents</b>												
	Inc	1,250.0	0.0	0.0	1,250.0	0.0	0.0	0.0	0.0	0	0	0
1005 GF/Prgm		1,250.0										
The Alaska Pioneer Homes are increasing the number of residents, therefore an increase in general fund program receipt authority is necessary to accurately reflect the Home's revenues and expenditures.												



**Change Record Detail - Multiple Scenarios with Descriptions**  
**Department of Family and Community Services**

**Component:** Pioneer Homes (3323)  
**RDU:** Alaska Pioneer Homes (503)

Scenario/Change Record Title	Trans Type	Totals	Personal Services	Travel	Services	Commodities	Capital Outlay	Grants, Benefits	Miscellaneous	Positions		
										PFT	PPT	NP
	Totals	71,532.6	46,113.9	14.7	22,397.6	2,906.0	95.6	4.8	0.0	411	12	27

**Line Item Detail (1676)**  
**Department of Family and Community Services**  
**Travel**

**Component:** Pioneer Homes (3323)

Line Number	Line Name		FY2022 Actuals	FY2023 Management Plan	FY2024 Governor
2000	Travel		0.0	14.7	14.7
Object Class	Servicing Agency	Explanation	FY2022 Actuals	FY2023 Management Plan	FY2024 Governor
<b>2000 Travel Detail Totals</b>			<b>0.0</b>	<b>14.7</b>	<b>14.7</b>
2000	In-State Employee Travel	In-state employee travel costs. This includes airfare, surface transportation, lodging, meals, and incidentals.	0.0	14.7	14.7

**Line Item Detail (1676)**  
**Department of Family and Community Services**  
**Services**

**Component:** Pioneer Homes (3323)

Line Number	Line Name		FY2022 Actuals	FY2023 Management Plan	FY2024 Governor
3000	Services		0.0	21,147.6	22,397.6
Object Class	Servicing Agency	Explanation	FY2022 Actuals	FY2023 Management Plan	FY2024 Governor
<b>3000 Services Detail Totals</b>			<b>0.0</b>	<b>21,147.6</b>	<b>22,397.6</b>
3000	Education Services	Training, conference fees, and memberships to professional organizations.	0.0	25.0	25.0
3001	Financial Services	Costs to electronically transmit pharmacy charges to third party insurance companies.	0.0	190.0	190.0
3003	Information Technology	Information technology consulting, software licensing, and software maintenance.	0.0	95.0	120.0
3004	Telecommunications	Equipment and telephone charges including local, long distance, and cellular phone charges.	0.0	120.0	200.0
3005	Health Services	Testing, TB	0.0	8.3	8.3
3006	Delivery Services	Freight and courier costs.	0.0	40.0	40.0
3007	Advertising and Promotions	Promotion and recruitment	0.0	0.5	0.5
3008	Utilities	Electric, water sewer, garbage, fuel	0.0	2,616.3	3,150.3
3009	Structure/Infrastructure/Land	Office repairs for plumbing, electrical and carpet cleaning. Also includes costs for storage of archived records and meeting room rentals.	0.0	425.0	750.0
3010	Equipment/Machinery	Maintenance agreements and minor parts for office equipment.	0.0	89.0	115.0
3011	Other Services	Program management consulting, printing forms, annual reports, brochures, and pamphlets.	0.0	15,663.5	15,820.0
3017	Inter-Agency Information Technology	Admin - Department-wide RSA with Department of Health for	0.0	440.0	443.1

**Line Item Detail (1676)**  
**Department of Family and Community Services**  
**Services**

**Component:** Pioneer Homes (3323)

Object Class	Servicing Agency	Explanation	FY2022 Actuals	FY2023 Management Plan	FY2024 Governor	
<b>3000 Services Detail Totals</b>			<b>0.0</b>	<b>21,147.6</b>	<b>22,397.6</b>	
	Non-Telecommunications	EPR				
3018	Inter-Agency Information Technology Telecommunications	Admin - Department-wide	RSA with Department of Administration for computer services.	0.0	50.0	75.0
3019	Inter-Agency Storage	FCS - Facilities Management (3331)	Storage	0.0	11.4	21.4
3021	Inter-Agency Mail	Admin - Department-wide	RSA with the Department of Administration for central mailroom services.	0.0	15.0	15.0
3022	Inter-Agency Human Resources	Admin - Department-wide	RSA with the Department of Administration, Division of Personnel for human resources support.	0.0	375.4	400.4
3024	Inter-Agency Legal	Law - Department-wide	RSA with the Department of Law for legal consultation and support.	0.0	20.0	30.4
3026	Inter-Agency Insurance	Admin - Department-wide	RSA with the Department of Administration for risk management.	0.0	205.0	205.0
3027	Inter-Agency Financial	Admin - Department-wide	Alaska EHealth Network	0.0	40.0	50.0
3028	Inter-Agency Americans with Disabilities Act Compliance	Admin - Department-wide	RSA with the Department of Administration for Americans with Disabilities Act services.	0.0	4.0	14.0
3032	Inter-Agency Health	H&SS - Department-wide	RSA with the Department of Health, Health Care Services, Certification and Licensing to make determinations from the results of state and federal criminal background checks on Pioneer Home employees.	0.0	10.0	20.0
3036	Inter-Agency Safety	H&SS - Department-wide	RSA with Department of Health, Residential Licensing	0.0	0.0	0.0
3037	State Equipment Fleet	Trans - Department-wide	Vehicle maintenance and repair	0.0	120.0	120.0
3038	Inter-Agency Management/Consulting	FCS - Administrative Services (3305)	RSA with the Department of Health and Social Services for the Commissioner's Office, Office of Program Review, Finance and	0.0	135.0	135.0

**Line Item Detail (1676)**  
**Department of Family and Community Services**  
**Services**

**Component:** Pioneer Homes (3323)

Object Class	Servicing Agency	Explanation	FY2022 Actuals	FY2023 Management Plan	FY2024 Governor
<b>3000 Services Detail Totals</b>			<b>0.0</b>	<b>21,147.6</b>	<b>22,397.6</b>
		Management Services, Grants and Contracts and Information Technology support.			
3038	Inter-Agency Management/Consulting	FCS - Commissioner's Office (3304) RSA with Commissioner's Office for legislative actions, policy and procedure for the Department, and coordination for Department-wide services.	0.0	50.0	50.0
3038	Inter-Agency Management/Consulting	FCS - Information Technology Services (3328) Telecom Services	0.0	375.0	375.0
3038	Inter-Agency Management/Consulting	FCS - Public Affairs (3329) RSA with the Department of Health for Public Affairs Services.	0.0	20.0	20.0
3038	Inter-Agency Management/Consulting	Labor - Department-wide Demographic / population estimates from Department of Labor.	0.0	4.2	4.2

**Line Item Detail (1676)**  
**Department of Family and Community Services**  
**Commodities**

**Component:** Pioneer Homes (3323)

Line Number	Line Name		FY2022 Actuals	FY2023 Management Plan	FY2024 Governor
4000	Commodities		0.0	2,906.0	2,906.0
Object Class	Servicing Agency	Explanation	FY2022 Actuals	FY2023 Management Plan	FY2024 Governor
<b>4000 Commodities Detail Totals</b>			<b>0.0</b>	<b>2,906.0</b>	<b>2,906.0</b>
4000	Business	Books, educational materials, office equipment, furniture, consumable office supplies, reference books, and subscriptions to business periodicals.	0.0	195.0	195.0
4001	Agricultural	Agricultural supplies for landscaping and gardening insecticides, pesticides, plants, soil, fertilizer, and tools.	0.0	5.0	5.0
4002	Household/Institutional	Food supplies for resident activities, cleaning supplies for laundry and janitorial, non-food supplies, incontinent products, recreational/activity supplies, and other operational supplies	0.0	500.0	500.0
4003	Scientific and Medical	Medications dispensed to Pioneer Home residents, medication packaging supplies, animal food for pets of the Pioneer Homes, medical instruments, and non-lab medical supplies.	0.0	1,752.0	1,752.0
4004	Safety	Resident monitoring systems, equipment and supplies, non-medical gloves, and other non-maintenance safety equipment.	0.0	165.0	165.0
4011	Electrical	Repair and maintenance supply costs for building materials, signage, electrical,	0.0	15.0	15.0

**Line Item Detail (1676)**  
**Department of Family and Community Services**  
**Commodities**

**Component:** Pioneer Homes (3323)

Object Class	Servicing Agency	Explanation	FY2022 Actuals	FY2023 Management Plan	FY2024 Governor
<b>4000 Commodities Detail Totals</b>			<b>0.0</b>	<b>2,906.0</b>	<b>2,906.0</b>
4012	Plumbing	Repair and maintenance supply costs for building materials, plumbing,	0.0	33.2	33.2
4015	Parts and Supplies	Repair and maintenance supply costs for building materials, small tools, and minor equipment.	0.0	210.0	210.0
4016	Paint/Preservatives	Repair and maintenance supply costs for building materials lube oils, grease, solvents, paint, preservatives, surface chemicals.	0.0	8.0	8.0
4017	Sand	Sand for parking lot.	0.0	1.0	1.0
4018	Surface Chemicals	Repair and maintenance supply costs for building lube oils, grease, surface chemicals	0.0	1.8	1.8
4019	Small Tools/Minor Equipment	Repair and maintenance supply costs for small tools and minor equipment.	0.0	15.0	15.0
4020	Equipment Fuel	This includes costs for unleaded vehicle fuel and diesel.	0.0	5.0	5.0

**Line Item Detail (1676)**  
**Department of Family and Community Services**  
**Capital Outlay**

**Component:** Pioneer Homes (3323)

Line Number	Line Name		FY2022 Actuals	FY2023 Management Plan	FY2024 Governor
5000	Capital Outlay		0.0	95.6	95.6
Object Class	Servicing Agency	Explanation	FY2022 Actuals	FY2023 Management Plan	FY2024 Governor
<b>5000 Capital Outlay Detail Totals</b>			<b>0.0</b>	<b>95.6</b>	<b>95.6</b>
5004	Equipment	Medical and scientific equipment, such as suction machines and electrocardiographs. This also includes maintenance machinery and equipment, safety equipment, household and institutional equipment, and other equipment valued over \$5.0.	0.0	95.6	95.6



**Line Item Detail (1676)**  
**Department of Family and Community Services**  
**Grants, Benefits**

**Component:** Pioneer Homes (3323)

Line Number	Line Name		FY2022 Actuals	FY2023 Management Plan	FY2024 Governor
7000	Grants, Benefits		0.0	4.8	4.8
Object Class	Servicing Agency	Explanation	FY2022 Actuals	FY2023 Management Plan	FY2024 Governor
		<b>7000 Grants, Benefits Detail Totals</b>	<b>0.0</b>	<b>4.8</b>	<b>4.8</b>
7002	Benefits	Personal allowance benefits paid to indigent Pioneer Home residents. A maximum of \$200.00 a month is sent to residents without any source of income.	0.0	4.8	4.8

**Revenue Detail (1681)**  
**Department of Family and Community Services**

**Component:** Pioneer Homes (3323)

Revenue Type (OMB Fund Code) Revenue Source	Component	Comment	FY2022 Actuals	FY2023 Management Plan	FY2024 Governor
<b>5002 Fed Rcpts (1002 Fed Rcpts)</b>			<b>0.0</b>	<b>2,532.6</b>	<b>2,590.2</b>
5002 Federal General Government - Miscellaneous Grants		The Palmer Veteran's and Pioneer Home is certified by the Veteran's Administration as a state Veteran's Home. The division bills the Veteran's Administration \$43.32 per day for services provided to qualifying Veteran residents.	0.0	2,532.6	2,590.2
<b>5005 GF/Prgm (1005 GF/Prgm)</b>			<b>0.0</b>	<b>20,214.5</b>	<b>21,930.2</b>
5115 Program Receipts Health & Human Svcs - Charges for Services		The Pioneer Home's authority to collect restricted program receipts is found in AS 47.55.030. Residents are billed monthly for room, board, and ancillary charges.	0.0	20,214.5	21,930.2
<b>5007 I/A Rcpts (1007 I/A Rcpts)</b>			<b>0.0</b>	<b>41,478.4</b>	<b>41,929.1</b>
5301 Inter-Agency Receipts		Interagency receipt authority resulting from billing Medicaid for long-term waiver services provided to Medicaid-eligible Pioneer Home residents. The federal receipts are received as interagency receipts from the Division of Senior and Disabilities Services.	0.0	6,568.8	6,600.0
5301 Inter-Agency Receipts	FCS - APH Payment Assistance (3327)	Interagency receipt authority to draw from the Payment Assistance Component as needed to subsidize elders' resources to meet the need of care found in AS 47.55.020	0.0	34,859.6	35,279.1
5301 Inter-Agency Receipts	Labor - Department-wide	Certified Nurse Aide Apprenticeship Program	0.0	50.0	50.0
5302 Inter-Agency Receipts - Prior Year Reimbursement Recovery	H&SS - Department-wide	Prior year reimbursement recovery.	0.0	0.0	0.0

**Revenue Detail (1681)**  
**Department of Family and Community Services**

**Component:** Pioneer Homes (3323)

Revenue Type (OMB Fund Code) Revenue Source	Component	Comment	FY2022 Actuals	FY2023 Management Plan	FY2024 Governor
<b>5108 Stat Desig (1108 Stat Desig)</b>			<b>0.0</b>	<b>2,078.8</b>	<b>2,385.6</b>
5204 Statutory Dsgntd Prgm Rcpts Hlth & Hmn Svcs - Chrsg for Svcs		These receipts represent resident and third-party insurance payments for pharmaceuticals dispensed from the centralized Pioneer Home Pharmacy.	0.0	2,078.8	2,385.6
<b>5265 COVID Fed (1265 COVID Fed)</b>			<b>0.0</b>	<b>0.0</b>	<b>0.0</b>
5028 Federal COVID Stimulus - Miscellaneous Grants		CARES Act Provider Relief Fund	0.0	0.0	0.0
<b>6004 Gen Fund (1004 Gen Fund)</b>			<b>0.0</b>	<b>2,933.8</b>	<b>2,697.5</b>
6047 General Fund - Miscellaneous		General Fund	0.0	2,933.8	2,697.5

**Inter-Agency Services (1682)**  
**Department of Family and Community Services**

**Component:** Pioneer Homes (3323)

	FY2022 Actuals	FY2023 Management Plan	FY2024 Governor
<b>Component Totals</b>	<b>0.0</b>	<b>1,875.0</b>	<b>1,978.5</b>
With Department of Administration	0.0	1,129.4	1,202.5
With Department of Family and Community Services	0.0	591.4	601.4
With Department of Law	0.0	20.0	30.4
With Department of Health & Social Services	0.0	10.0	20.0
With Department of Transportation/Public Facilities	0.0	120.0	120.0
With Department of Labor and Workforce Development	0.0	4.2	4.2

Object Class	Servicing Agency	Explanation	FY2022 Actuals	FY2023 Management Plan	FY2024 Governor
3017 Inter-Agency Information Technology Non-Telecommunications	Admin - Department-wide	RSA with Department of Health for EPR	0.0	440.0	443.1
3018 Inter-Agency Information Technology Telecommunications	Admin - Department-wide	RSA with Department of Administration for computer services.	0.0	50.0	75.0
3019 Inter-Agency Storage	FCS - Facilities Management (3331)	Storage	0.0	11.4	21.4
3021 Inter-Agency Mail	Admin - Department-wide	RSA with the Department of Administration for central mailroom services.	0.0	15.0	15.0
3022 Inter-Agency Human Resources	Admin - Department-wide	RSA with the Department of Administration, Division of Personnel for human resources support.	0.0	375.4	400.4
3024 Inter-Agency Legal	Law - Department-wide	RSA with the Department of Law for legal consultation and support.	0.0	20.0	30.4
3026 Inter-Agency Insurance	Admin - Department-wide	RSA with the Department of Administration for risk management.	0.0	205.0	205.0
3027 Inter-Agency Financial	Admin - Department-wide	Alaska EHealth Network	0.0	40.0	50.0
3028 Inter-Agency Americans with Disabilities Act Compliance	Admin - Department-wide	RSA with the Department of Administration for Americans with Disabilities Act services.	0.0	4.0	14.0
3032 Inter-Agency Health	H&SS - Department-wide	RSA with the Department of Health,	0.0	10.0	20.0

**Inter-Agency Services (1682)**  
**Department of Family and Community Services**

**Component:** Pioneer Homes (3323)

Object Class	Servicing Agency	Explanation	FY2022 Actuals	FY2023 Management Plan	FY2024 Governor
		Health Care Services, Certification and Licensing to make determinations from the results of state and federal criminal background checks on Pioneer Home employees.			
3037	State Equipment Fleet	Trans - Department-wide	0.0	120.0	120.0
3038	Inter-Agency Management/Consulting	FCS - Administrative Services (3305)	0.0	135.0	135.0
		RSA with the Department of Health and Social Services for the Commissioner's Office, Office of Program Review, Finance and Management Services, Grants and Contracts and Information Technology support.			
3038	Inter-Agency Management/Consulting	FCS - Commissioner's Office (3304)	0.0	50.0	50.0
		RSA with Commissioner's Office for legislative actions, policy and procedure for the Department, and coordination for Department-wide services.			
3038	Inter-Agency Management/Consulting	FCS - Information Technology Services (3328)	0.0	375.0	375.0
3038	Inter-Agency Management/Consulting	FCS - Public Affairs (3329)	0.0	20.0	20.0
3038	Inter-Agency Management/Consulting	Labor - Department-wide	0.0	4.2	4.2
		Demographic / population estimates from Department of Labor.			

**Personal Services Expenditure Detail**  
**Department of Family and Community Services**

**Scenario:** FY2024 Governor (19867)  
**Component:** Pioneer Homes (3323)  
**RDU:** Alaska Pioneer Homes (503)

PCN	Job Class Title	Time Status	Retire Code	Barg Unit	Location	Salary Sched	Range / Step	Comp Months	Split / Count	Annual Salaries	COLA	Premium Pay	Annual Benefits	Total Costs	UGF Amount
02-7007	Pioneers Home Administrator	FT	A	XE	Palmer	99	23M	12.0		113,276	0	0	69,014	182,290	4,010
02-7016	Assisted Living Aide	FT	A	GP	Juneau	105	9C / D	12.0		39,840	1,609	5,500	38,005	84,954	3,271
02-7100	Pioneers Home Administrator	FT	A	XE	Sitka	N05	23F / J	12.0		113,302	0	0	69,025	182,327	7,020
02-7101	Administrative Assistant 3	FT	A	SS	Sitka	105	15A / B	12.0		58,510	830	0	46,200	105,540	4,063
02-7102	Supply Technician 2	FT	A	GP	Sitka	205	12R / S	12.0		70,979	2,518	0	48,753	122,250	4,707
02-7104	Maint Gen Fman	FT	A	LL	Sitka	1BB	52J	12.0		67,837	3,221	2,000	48,548	121,606	4,682
02-7105	Certified Nurse Aide 2	FT	A	GP	Sitka	105	12P / Q	12.0		69,323	2,637	5,000	50,155	127,115	4,894
02-7106	Nurse 2	FT	A	GP	Sitka	105	22C / D	12.0		95,355	3,561	5,000	61,067	164,983	6,352
02-7108	Recreation Therapist 1	FT	A	SS	Sitka	105	14K / L	12.0		69,181	982	0	50,673	120,836	4,652
02-7109	Assisted Living Aide	FT	A	GP	Fairbanks	103	9B / C	12.0		37,986	1,525	5,000	37,018	81,529	3,139
02-7110	Nurse 3	FT	A	SS	Sitka	105	24D / E	12.0		119,392	1,765	5,000	73,818	199,975	7,699
02-7111	Nurse 3	FT	A	SS	Sitka	105	24D	12.0		115,544	1,711	5,000	72,205	194,460	7,487
02-7112	Nurse 2	FT	A	GP	Sitka	105	22C / D	12.0		94,461	3,529	5,000	60,693	163,683	6,302
02-7114	Nurse 2	FT	A	GP	Sitka	105	22D	12.0		95,355	3,561	5,000	61,067	164,983	6,352
02-7117	Nurse 1	FT	A	GP	Sitka	105	21C / D	12.0		86,512	3,247	5,000	57,360	152,119	5,857
02-7118	Nurse 2	FT	A	GP	Sitka	105	22N / O	12.0		128,876	4,750	5,000	75,119	213,745	8,229
02-7119	Certified Nurse Aide 1	FT	A	GP	Ketchikan	100	11D / E	12.0		44,343	1,768	5,500	39,893	91,504	3,523
02-7120	Certified Nurse Aide 1	FT	A	GP	Sitka	105	11P / Q	12.0		64,655	2,471	5,000	48,198	120,324	4,633
02-7121	Certified Nurse Aide 2	FT	A	GP	Palmer	100	12F / G	12.0		50,622	1,796	0	40,219	92,637	3,567
02-7122	Certified Nurse Aide 1	FT	A	GP	Sitka	105	11M / N	12.0		58,832	2,282	5,500	45,967	112,581	4,334
02-7124	Assisted Living Aide	FT	N	GP	Sitka	105	9B / C	12.0		38,727	1,292	5,500	26,438	71,957	2,770
02-7125	Certified Nurse Aide 1	FT	A	GP	Sitka	105	11M / N	12.0		57,442	2,233	5,500	45,384	110,559	4,257
02-7126	Certified Nurse Aide 1	FT	A	GP	Fairbanks	103	11A / B	12.0		41,594	1,653	5,000	38,531	86,778	3,341
02-7127	Certified Nurse Aide 1	FT	A	GP	Sitka	105	11C / D	12.0		44,299	1,749	5,000	39,665	90,713	3,493
02-7128	Certified Nurse Aide 1	FT	A	GP	Sitka	105	11M / N	12.0		57,211	2,207	5,000	45,077	109,495	4,216
02-7129	Assisted Living Aide	FT	A	GP	Sitka	105	9C / D	12.0		39,975	1,596	5,000	37,852	84,423	5,783
02-7130	Certified Nurse Aide 1	FT	A	GP	Sitka	105	11L / M	12.0		56,157	2,170	5,000	44,636	107,963	7,396
02-7131	Certified Nurse Aide 1	FT	A	GP	Sitka	105	11S / T	12.0		71,273	2,706	5,000	50,972	129,951	8,902
02-7132	Certified Nurse Aide 1	FT	A	GP	Sitka	105	11K / L	12.0		55,185	2,153	5,500	44,438	107,276	7,348
02-7133	Certified Nurse Aide 1	FT	A	GP	Sitka	105	11N / O	12.0		59,226	2,296	5,500	46,132	113,154	7,751
02-7134	Certified Nurse Aide 1	FT	A	GP	Sitka	105	11Q / R	12.0		66,846	2,567	5,500	49,326	124,239	8,510
02-7135	Certified Nurse Aide 1	FT	A	GP	Sitka	105	11P / Q	12.0		63,494	2,448	5,500	47,921	119,363	8,176
02-7136	Certified Nurse Aide 1	FT	A	GP	Sitka	105	11J / K	12.0		52,460	2,056	5,500	43,295	103,311	7,077
02-7137	Certified Nurse Aide 2	FT	A	GP	Fairbanks	103	12N / O	12.0		63,785	2,458	5,500	48,043	119,786	8,205
02-7138	Certified Nurse Aide 1	FT	A	GP	Sitka	105	11G / J	12.0		51,753	2,058	6,250	43,313	103,374	7,081
02-7139	Certified Nurse Aide 1	FT	A	GP	Anchorage	100	11A / B	12.0		40,385	1,655	6,250	38,548	86,838	5,948
02-7140	Certified Nurse Aide 1	FT	A	GP	Sitka	105	11O / P	12.0		62,693	2,446	6,250	47,900	119,289	8,171

Note: If a position is split, an asterisk (\*) will appear in the Split/Count column. If the split position is also counted in the component, two asterisks (\*\*) will appear in this column. [No valid job title] appearing in the Job Class Title indicates that the PCN has an invalid class code or invalid range for the class code effective date of this scenario.

**Personal Services Expenditure Detail**  
**Department of Family and Community Services**

**Scenario:** FY2024 Governor (19867)  
**Component:** Pioneer Homes (3323)  
**RDU:** Alaska Pioneer Homes (503)

PCN	Job Class Title	Time Status	Retire Code	Barg Unit	Location	Salary Sched	Range / Step	Comp Months	Split / Count	Annual Salaries	COLA	Premium Pay	Annual Benefits	Total Costs	UGF Amount
02-7141	Certified Nurse Aide 1	FT	A	GP	Sitka	105	11G / J	12.0		51,753	2,058	6,250	43,313	103,374	7,081
02-7142	Pro Svcs Sp 3	FT	A	GP	Sitka	105	19F / G	12.0		85,976	3,050	0	55,040	144,066	5,547
02-7143	Certified Nurse Aide 1	FT	A	GP	Sitka	105	11T / U	12.0		72,529	2,751	5,000	51,499	131,779	5,074
02-7144	Certified Nurse Aide 1	FT	A	GP	Sitka	105	11E / F	12.0		47,102	1,849	5,000	40,840	94,791	3,650
02-7146	Maint Gen Jrny	FT	A	LL	Sitka	1BB	54P / Q	12.0		74,938	3,549	2,000	51,525	132,012	5,083
02-7148	Maint Gen Jrny	FT	A	LL	Sitka	1BB	54D / E	12.0		55,218	2,639	2,000	43,258	103,115	3,970
02-7152	Maint Gen Jrny	FT	A	LL	Sitka	1BB	54Q / R	12.0		77,358	3,660	2,000	52,539	135,557	5,219
02-7158	Nurse 2	FT	A	GP	Sitka	105	22E / F	12.0		102,063	3,799	5,000	63,879	174,741	6,728
02-7159	Assisted Living Aide	FT	A	GP	Sitka	105	9B / C	12.0		38,727	1,551	5,000	37,329	82,607	3,180
02-7164	Certified Nurse Aide 1	FT	A	GP	Sitka	105	11G / J	12.0		51,753	1,836	0	40,693	94,282	3,630
02-7165	Certified Nurse Aide 1	FT	A	GP	Anchorage	100	11C / D	12.0		45,793	1,625	0	38,195	85,613	3,296
02-7170	Assisted Living Aide	PT	A	GP	Ketchikan	100	9B / C	6.0		18,437	654	0	12,478	31,569	1,215
02-7176	Assisted Living Aide	FT	A	GP	Sitka	105	9B / C	12.0		38,727	1,551	5,000	37,329	82,607	3,180
02-7177	Recreation Assistant	FT	A	GP	Sitka	105	11G / J	12.0		51,753	1,836	0	40,693	94,282	3,630
02-7178	Certified Nurse Aide 1	FT	A	GP	Sitka	105	11P / Q	12.0		64,313	2,459	5,000	48,055	119,827	4,613
02-7180	Assisted Living Aide	FT	A	GP	Sitka	105	9B / C	12.0		38,572	1,546	5,000	37,264	82,382	3,172
02-7197	Med I/S Asst	FT	A	GP	Sitka	105	10G / J	12.0		47,387	1,681	0	38,863	87,931	3,385
02-7200	Pioneers Home Administrator	FT	A	XE	Fairbanks	N03	23J / K	12.0		114,914	0	0	69,701	184,615	7,108
02-7201	Assisted Living Aide	FT	A	GP	Fairbanks	103	9B / C	12.0		37,935	1,523	5,000	36,997	81,455	3,136
02-7202	Administrative Assistant 3	FT	A	SS	Fairbanks	103	15D / E	12.0		63,606	903	0	48,336	112,845	4,345
02-7203	Assisted Living Aide	FT	A	GP	Fairbanks	103	9C / D	12.0		39,215	1,569	5,000	37,534	83,318	3,208
02-7204	Supply Technician 2	FT	A	GP	Fairbanks	103	12B / C	12.0		45,416	1,611	0	38,037	85,064	3,275
02-7205	Certified Nurse Aide 1	FT	A	GP	Fairbanks	103	11B / C	12.0		42,920	1,700	5,000	39,087	88,707	3,415
02-7207	Pro Svcs Sp 1	FT	A	GP	Fairbanks	103	15D / E	12.0		59,963	2,127	0	44,135	106,225	4,090
02-7208	A/L Care Coord	FT	A	GP	Fairbanks	103	17A / B	12.0		62,264	2,387	5,000	47,196	116,847	4,499
02-7209	Certified Nurse Aide 1	FT	A	GP	Fairbanks	103	11E / F	12.0		46,872	1,840	5,000	40,743	94,455	3,637
02-7210	Certified Nurse Aide 1	FT	A	GP	Fairbanks	103	11J / K	12.0		52,416	2,037	5,000	43,067	102,520	3,947
02-7211	Nurse 2	FT	A	GP	Fairbanks	103	22D / E	12.0		96,584	3,604	5,000	61,583	166,771	6,421
02-7212	Nurse 2	FT	A	GP	Fairbanks	103	22A / B	12.0		87,497	3,282	5,000	57,773	153,552	5,912
02-7213	Nurse 3	FT	A	GP	Fairbanks	103	24N / O	12.0		141,000	5,180	5,000	80,202	231,382	8,908
02-7214	Certified Nurse Aide 1	FT	A	GP	Anchorage	100	11C / D	12.0		42,791	1,696	5,000	39,033	88,520	3,408
02-7215	Certified Nurse Aide 1	FT	A	GP	Fairbanks	103	11A / B	12.0		41,594	1,653	5,000	38,531	86,778	3,341
02-7216	Nurse 3	FT	A	GP	Fairbanks	103	24C / D	12.0		107,328	3,985	5,000	66,087	182,400	7,022
02-7217	Nurse 2	FT	A	GP	Fairbanks	103	22G / J	12.0		104,949	3,901	5,000	65,089	178,939	6,889
02-7218	Licensed Practical Nurse	FT	A	GP	Fairbanks	103	17F / G	12.0		73,731	2,793	5,000	52,003	133,527	5,141
02-7219	Certified Nurse Aide 1	FT	A	GP	Fairbanks	103	11D / E	12.0		45,669	1,798	5,000	40,239	92,706	3,569
02-7220	Assisted Living Aide	FT	A	GP	Fairbanks	103	9A / B	12.0		36,972	1,489	5,000	36,593	80,054	3,082
02-7221	Licensed Practical Nurse	FT	A	GP	Fairbanks	103	17E / F	12.0		71,487	2,714	5,000	51,062	130,263	5,015

Note: If a position is split, an asterisk (\*) will appear in the Split/Count column. If the split position is also counted in the component, two asterisks (\*\*) will appear in this column. [No valid job title] appearing in the Job Class Title indicates that the PCN has an invalid class code or invalid range for the class code effective date of this scenario.

**Personal Services Expenditure Detail**  
**Department of Family and Community Services**

**Scenario:** FY2024 Governor (19867)  
**Component:** Pioneer Homes (3323)  
**RDU:** Alaska Pioneer Homes (503)

PCN	Job Class Title	Time Status	Retire Code	Barg Unit	Location	Salary Sched	Range / Step	Comp Months	Split / Count	Annual Salaries	COLA	Premium Pay	Annual Benefits	Total Costs	UGF Amount
02-7222	Assisted Living Aide	FT	A	GP	Fairbanks	103	9A / B	12.0		36,972	1,489	5,000	36,593	80,054	3,082
02-7223	Nurse 2	FT	A	GP	Fairbanks	103	22B / C	12.0		90,246	3,379	5,000	58,926	157,551	6,066
02-7224	Certified Nurse Aide 1	FT	A	GP	Fairbanks	103	11A / B	12.0		41,594	1,653	5,000	38,531	86,778	3,341
02-7225	Assisted Living Aide	FT	A	GP	Fairbanks	103	9A / B	12.0		36,621	1,477	5,000	36,446	79,544	3,062
02-7226	Pro Svcs Sp 3	FT	A	SS	Fairbanks	503	19Q / R	12.0		114,442	1,624	0	69,647	185,713	7,150
02-7227	Nurse 2	FT	A	GP	Fairbanks	103	22J / K	12.0		111,228	4,124	5,000	67,721	188,073	7,241
02-7228	Licensed Practical Nurse	FT	A	GP	Fairbanks	103	17C / D	12.0		66,846	2,549	5,000	49,116	123,511	4,755
02-7229	Certified Nurse Aide 1	FT	A	GP	Fairbanks	103	11E / F	12.0		47,112	1,849	5,000	40,844	94,805	3,650
02-7230	Certified Nurse Aide 1	FT	A	GP	Fairbanks	103	11N / O	12.0		59,573	2,291	5,000	46,068	112,932	4,348
02-7231	Certified Nurse Aide 1	FT	A	GP	Fairbanks	103	11B / C	12.0		42,588	1,688	5,000	38,948	88,224	3,397
02-7233	Assisted Living Aide	FT	A	GP	Fairbanks	103	9B / C	12.0		37,521	1,526	5,500	37,033	81,580	3,141
02-7234	Certified Nurse Aide 1	FT	A	GP	Fairbanks	103	11B / C	12.0		42,577	1,706	5,500	39,153	88,936	3,424
02-7235	Certified Nurse Aide 1	FT	A	GP	Fairbanks	103	11C / D	12.0		44,084	1,759	5,500	39,784	91,127	3,508
02-7236	Certified Nurse Aide 1	FT	A	GP	Fairbanks	103	11C / D	12.0		44,226	1,764	5,500	39,844	91,334	3,516
02-7237	Certified Nurse Aide 1	FT	A	GP	Fairbanks	103	11A / B	12.0		41,594	1,671	5,500	38,740	87,505	3,369
02-7238	Assisted Living Aide	FT	A	GP	Fairbanks	103	9A / B	12.0		36,972	1,507	5,500	36,803	80,782	3,110
02-7240	Certified Nurse Aide 1	FT	A	GP	Fairbanks	103	11B / C	12.0		42,566	1,705	5,500	39,148	88,919	3,423
02-7241	Certified Nurse Aide 1	FT	A	GP	Fairbanks	103	11P / Q	12.0		63,512	2,449	5,500	47,928	119,389	4,597
02-7244	Certified Nurse Aide 1	FT	A	GP	Juneau	105	11N / O	12.0		58,910	2,285	5,500	45,999	112,694	4,339
02-7245	Nurse 2	PT	A	GP	Fairbanks	103	22O / P	9.0		109,648	3,890	0	53,089	166,627	6,415
02-7246	Certified Nurse Aide 1	FT	A	GP	Fairbanks	103	11A / B	12.0		41,594	1,653	5,000	38,531	86,778	3,341
02-7247	Assisted Living Aide	FT	A	GP	Fairbanks	103	9B / C	12.0		37,986	1,525	5,000	37,018	81,529	3,139
02-7249	Certified Nurse Aide 1	FT	A	GP	Fairbanks	103	11A / B	12.0		41,223	1,640	5,000	38,375	86,238	3,320
02-7251	Maint Gen Fman	FT	A	LL	Fairbanks	1EE	52P / Q	12.0		90,463	4,265	2,000	58,033	154,761	5,958
02-7252	Certified Nurse Aide 1	FT	A	GP	Fairbanks	103	11A / B	12.0		41,594	1,653	5,000	38,531	86,778	3,341
02-7256	Maint Gen Jrny	FT	A	LL	Fairbanks	1EE	54N / O	12.0		73,064	3,462	2,000	50,739	129,265	4,977
02-7265	Maint Gen Jrny	FT	A	LL	Fairbanks	1EE	54E / F	12.0		60,374	2,877	2,000	45,420	110,671	4,261
02-7270	Certified Nurse Aide 1	FT	A	GP	Fairbanks	103	11Q / R	12.0		65,579	2,504	5,000	48,585	121,668	4,684
02-7276	Certified Nurse Aide 1	FT	A	GP	Fairbanks	103	11B / C	12.0		42,422	1,683	5,000	38,878	87,983	3,387
02-7284	Administrative Assistant 1	FT	A	GP	Fairbanks	103	12A / B	12.0		44,226	1,747	5,000	39,634	90,607	3,488
02-7290	Maint Gen Jrny	FT	A	LL	Fairbanks	1EE	54B / C	12.0		54,901	2,625	2,000	43,125	102,651	3,952
02-7298	Assisted Living Aide	FT	A	GP	Fairbanks	103	9B / C	12.0		37,986	1,525	5,000	37,018	81,529	3,139
02-7302	Assisted Living Aide	FT	A	GP	Anchorage	100	9A / B	12.0		35,645	1,265	0	33,941	70,851	2,728
02-7303	Administrative Assistant 3	FT	A	SS	Palmer	100	15M / N	12.0		75,213	1,067	0	53,202	129,482	2,849
02-7304	Certified Nurse Aide 1	PT	A	GP	Palmer	100	11B / C	6.0		20,664	733	0	13,412	34,809	766
02-7305	Certified Nurse Aide 1	FT	A	GP	Palmer	100	11G / J	12.0		49,296	1,926	5,000	41,760	97,982	2,156
02-7306	Licensed Practical Nurse	FT	A	GP	Palmer	100	17E / F	12.0		69,401	2,640	5,000	50,188	127,229	2,799
02-7307	Certified Nurse Aide 1	FT	A	GP	Palmer	100	11Q	12.0		61,659	2,365	5,000	46,942	115,966	2,551

Note: If a position is split, an asterisk (\*) will appear in the Split/Count column. If the split position is also counted in the component, two asterisks (\*\*) will appear in this column. [No valid job title] appearing in the Job Class Title indicates that the PCN has an invalid class code or invalid range for the class code effective date of this scenario.



**Personal Services Expenditure Detail**  
**Department of Family and Community Services**

**Scenario:** FY2024 Governor (19867)  
**Component:** Pioneer Homes (3323)  
**RDU:** Alaska Pioneer Homes (503)

PCN	Job Class Title	Time Status	Retire Code	Barg Unit	Location	Salary Sched	Range / Step	Comp Months	Split / Count	Annual Salaries	COLA	Premium Pay	Annual Benefits	Total Costs	UGF Amount
02-7308	Nurse 2	FT	A	GP	Palmer	100	22D / E	12.0		93,776	3,505	5,000	60,406	162,687	3,579
02-7309	Certified Nurse Aide 1	FT	A	GP	Palmer	100	11C / D	12.0		42,844	1,698	5,000	39,055	88,597	1,949
02-7310	Nurse 3	FT	A	SS	Palmer	500	24C / D	12.0		108,909	1,617	5,000	69,423	184,949	4,069
02-7312	Assisted Living Aide	FT	A	GP	Palmer	100	9M	12.0		47,775	1,872	5,000	41,122	95,769	2,107
02-7313	Certified Nurse Aide 1	FT	A	GP	Palmer	100	11E / F	12.0		44,519	1,757	5,000	39,757	91,033	2,003
02-7314	Pio Hm Asst Adm	FT	A	SS	Anchorage	100	21P / Q	12.0		118,899	1,687	0	71,515	192,101	13,159
02-7317	Certified Nurse Aide 1	FT	A	GG	Palmer	100	11S	12.0		65,735	2,510	5,000	48,651	121,896	2,682
02-7318	Licensed Practical Nurse	FT	A	GP	Palmer	200	17O	12.0		86,756	3,256	5,000	57,463	152,475	3,355
02-7319	Certified Nurse Aide 1	FT	A	GP	Palmer	100	11M	12.0		54,269	2,103	5,000	43,844	105,216	2,315
02-7320	Certified Nurse Aide 1	FT	A	GG	Palmer	100	11Q	12.0		61,659	2,365	5,000	46,942	115,966	2,551
02-7321	Assisted Living Aide	FT	A	GP	Palmer	100	9M	12.0		47,775	1,872	5,000	41,122	95,769	2,107
02-7322	Certified Nurse Aide 1	FT	A	GP	Palmer	100	11C / D	12.0		41,914	1,665	5,000	38,665	87,244	1,919
02-7323	Certified Nurse Aide 1	FT	A	GP	Palmer	100	11A / B	12.0		40,304	1,607	5,000	37,990	84,901	1,868
02-7325	Certified Nurse Aide 1	FT	A	GP	Palmer	100	11B	12.0		40,385	1,610	5,000	38,024	85,019	1,870
02-7326	Certified Nurse Aide 1	FT	A	GP	Palmer	100	11M	12.0		54,269	2,103	5,000	43,844	105,216	2,315
02-7327	Certified Nurse Aide 1	FT	A	GP	Palmer	100	11L / M	12.0		54,126	2,098	5,000	43,784	105,008	2,310
02-7328	Certified Nurse Aide 1	FT	A	GP	Palmer	100	11B / C	12.0		40,706	1,622	5,000	38,159	85,487	1,881
02-7329	Certified Nurse Aide 1	FT	A	GP	Palmer	100	11D / E	12.0		43,454	1,719	5,000	39,311	89,484	1,969
02-7330	Certified Nurse Aide 1	FT	A	GP	Palmer	100	11F	12.0		45,747	1,801	5,000	40,272	92,820	2,042
02-7332	Certified Nurse Aide 1	FT	A	GP	Palmer	100	11J / K	12.0		49,363	1,929	5,000	41,788	98,080	2,158
02-7333	Certified Nurse Aide 1	FT	A	GP	Palmer	100	11M / N	12.0		55,219	2,137	5,000	44,242	106,598	2,345
02-7334	Certified Nurse Aide 1	FT	A	GP	Palmer	100	11A / B	12.0		40,099	1,600	5,000	37,904	84,603	1,861
02-7335	Certified Nurse Aide 1	FT	A	GP	Palmer	100	11N / O	12.0		57,610	2,221	5,000	45,245	110,076	2,422
02-7336	Assisted Living Aide	PT	A	GP	Palmer	100	9A	9.0		26,076	925	0	18,056	45,057	991
02-7338	Recreation Therapist 2	FT	A	SS	Palmer	99	16M	12.0		75,296	1,069	0	53,237	129,602	2,851
02-7339	Certified Nurse Aide 1	FT	A	GP	Palmer	100	11K	12.0		50,895	1,983	5,000	42,430	100,308	2,207
02-7340	Assisted Living Aide	FT	A	GP	Palmer	100	9E / F	12.0		39,982	1,596	5,000	37,855	84,433	1,858
02-7341	Pro Svcs Sp 3	FT	A	GP	Palmer	100	19B / C	12.0		69,604	2,470	0	48,177	120,251	2,646
02-7342	Licensed Practical Nurse	FT	A	GP	Palmer	100	17D / E	12.0		65,242	2,492	5,000	48,444	121,178	2,666
02-7343	Maint Gen Fman	FT	A	LL	Palmer	1BB	52M	12.0		75,656	3,582	2,000	51,826	133,064	2,927
02-7346	Maint Gen Jmry	FT	A	LL	Palmer	1BB	54K	12.0		61,827	2,944	2,000	46,029	112,800	2,482
02-7350	Certified Nurse Aide 1	PT	A	GP	Palmer	100	11C / D	6.0		21,279	755	0	13,670	35,704	786
02-7351	Certified Nurse Aide 1	FT	A	GP	Palmer	100	11C / D	12.0		41,988	1,667	5,000	38,696	87,351	1,922
02-7352	Certified Nurse Aide 1	PT	A	GP	Palmer	100	11G	6.0		23,663	840	0	14,669	39,172	862
02-7356	Certified Nurse Aide 1	FT	A	GP	Palmer	100	11K / L	12.0		52,276	2,032	5,000	43,009	102,317	2,251
02-7357	Nurse 2	FT	A	GP	Anchorage	100	22D / E	12.0		91,775	3,327	2,000	58,309	155,411	10,646
02-7359	Certified Nurse Aide 1	FT	A	GP	Palmer	100	11J / K	12.0		50,429	1,967	5,000	42,234	99,630	2,192
02-7362	Nurse 3	FT	A	SS	Anchorage	100	24L / M	12.0		131,367	1,893	2,000	77,580	212,840	14,580

Note: If a position is split, an asterisk (\*) will appear in the Split/Count column. If the split position is also counted in the component, two asterisks (\*\*) will appear in this column. [No valid job title] appearing in the Job Class Title indicates that the PCN has an invalid class code or invalid range for the class code effective date of this scenario.

**Personal Services Expenditure Detail**  
**Department of Family and Community Services**

**Scenario:** FY2024 Governor (19867)  
**Component:** Pioneer Homes (3323)  
**RDU:** Alaska Pioneer Homes (503)

PCN	Job Class Title	Time Status	Retire Code	Barg Unit	Location	Salary Sched	Range / Step	Comp Months	Split / Count	Annual Salaries	COLA	Premium Pay	Annual Benefits	Total Costs	UGF Amount
02-7369	Nurse 2	FT	A	GP	Palmer	100	22D / E	12.0		92,491	3,459	5,000	59,867	160,817	3,538
02-7375	Certified Nurse Aide 1	FT	A	GP	Palmer	100	11F	12.0		45,747	1,801	5,000	40,272	92,820	2,042
02-7383	Assisted Living Aide	FT	A	GP	Palmer	100	9A / B	12.0		35,334	1,254	0	33,811	70,399	1,549
02-7390	Nurse 2	FT	A	GP	Palmer	100	22J / K	12.0		106,945	3,972	5,000	65,926	181,843	4,001
02-7391	Certified Nurse Aide 1	FT	A	GP	Palmer	100	11O	12.0		57,837	2,229	5,000	45,340	110,406	2,429
02-7392	Certified Nurse Aide 1	PT	A	GP	Palmer	100	11L	9.0		39,414	1,398	0	23,647	64,459	1,418
02-7393	Certified Nurse Aide 1	FT	A	GP	Palmer	100	11G	12.0		47,327	1,857	5,000	40,934	95,118	2,093
02-7394	Nurse 3	FT	A	SS	Palmer	100	24C / D	12.0		107,781	1,601	5,000	68,950	183,332	4,033
02-7396	Supply Technician 2	FT	A	GP	Palmer	99	12P	12.0		60,977	2,163	0	44,560	107,700	2,369
02-7397	Licensed Practical Nurse	FT	A	GP	Palmer	100	17F	12.0		69,401	2,640	5,000	50,188	127,229	2,799
02-7398	Certified Nurse Aide 1	FT	A	GP	Palmer	100	11J / K	12.0		49,629	1,938	5,000	41,899	98,466	2,166
02-7399	Certified Nurse Aide 1	FT	A	GP	Palmer	100	11B / C	12.0		41,371	1,645	5,000	38,437	86,453	1,902
02-7403	Office Assistant 2	FT	A	GP	Anchorage	100	10A / B	12.0		37,816	1,342	0	34,851	74,009	5,070
02-7405	Certified Nurse Aide 1	FT	A	GP	Anchorage	100	11C / D	12.0		42,928	1,700	5,000	39,090	88,718	6,077
02-7408	Physical Therapist	FT	A	SS	Anchorage	99	18O / P	12.0		93,149	1,322	0	60,721	155,192	5,975
02-7411	Certified Nurse Aide 1	FT	A	GP	Anchorage	100	11J / K	12.0		50,762	1,978	5,000	42,374	100,114	3,854
02-7413	Licensed Practical Nurse	FT	A	GP	Anchorage	100	17C / D	12.0		62,804	2,406	5,000	47,422	117,632	4,529
02-7415	Licensed Practical Nurse	FT	A	GG	Anchorage	99	17O / P	12.0		83,094	3,126	5,000	55,928	147,148	5,665
02-7416	Licensed Practical Nurse	FT	A	GP	Anchorage	100	17D / E	12.0		66,825	2,548	5,000	49,108	123,481	4,754
02-7417	Nurse 3	FT	A	SS	Anchorage	100	24N / O	12.0		140,754	2,069	5,000	82,773	230,596	8,878
02-7418	Nurse 3	FT	A	SS	Anchorage	100	24C / D	12.0		110,032	1,562	0	67,798	179,392	6,907
02-7419	Certified Nurse Aide 1	FT	A	GP	Anchorage	100	11C / D	12.0		42,094	1,671	5,000	38,740	87,505	3,369
02-7420	Licensed Practical Nurse	FT	A	GP	Anchorage	100	17D / E	12.0		66,352	2,532	5,000	48,909	122,793	4,728
02-7421	Certified Nurse Aide 2	FT	A	GP	Anchorage	100	12B / C	12.0		43,594	1,724	5,000	39,369	89,687	3,453
02-7422	Assisted Living Aide	FT	A	GP	Anchorage	100	9A / B	12.0		35,579	1,440	5,000	36,009	78,028	3,004
02-7423	Certified Nurse Aide 1	FT	A	GP	Anchorage	100	11S	12.0		65,735	2,510	5,000	48,651	121,896	4,693
02-7424	Certified Nurse Aide 1	FT	A	GP	Anchorage	100	11D / E	12.0		43,407	1,762	6,250	39,815	91,234	3,513
02-7425	Certified Nurse Aide 2	FT	A	GP	Anchorage	100	12O / P	12.0		63,104	2,416	5,000	47,548	118,068	4,546
02-7427	Certified Nurse Aide 1	FT	A	GP	Anchorage	100	11J	12.0		49,296	1,926	5,000	41,760	97,982	3,772
02-7428	Certified Nurse Aide 1	FT	A	GP	Anchorage	100	11K	12.0		50,895	1,983	5,000	42,430	100,308	3,862
02-7429	Certified Nurse Aide 1	FT	A	GP	Anchorage	100	11L / M	12.0		52,896	2,054	5,000	43,269	103,219	3,974
02-7430	Administrative Assistant 3	FT	A	SS	Anchorage	100	15A / B	12.0		55,092	782	0	44,767	100,641	3,875
02-7431	Certified Nurse Aide 1	FT	A	GP	Anchorage	100	11J / K	12.0		50,695	1,994	5,500	42,556	100,745	3,879
02-7432	Certified Nurse Aide 1	FT	A	GP	Anchorage	100	11A / B	12.0		40,385	1,628	5,500	38,234	85,747	3,301
02-7433	Certified Nurse Aide 1	FT	A	GP	Anchorage	100	11F	12.0		45,747	1,818	5,500	40,481	93,546	3,602
02-7434	Certified Nurse Aide 1	FT	A	GP	Anchorage	100	11D / E	12.0		43,583	1,546	0	37,269	82,398	3,172
02-7435	Certified Nurse Aide 2	FT	A	GP	Anchorage	100	12T / U	12.0		72,971	2,784	5,500	51,894	133,149	5,126
02-7436	Certified Nurse Aide 1	FT	A	GP	Anchorage	100	11Q / R	12.0		61,910	2,392	5,500	47,257	117,059	4,507

Note: If a position is split, an asterisk (\*) will appear in the Split/Count column. If the split position is also counted in the component, two asterisks (\*\*) will appear in this column. [No valid job title] appearing in the Job Class Title indicates that the PCN has an invalid class code or invalid range for the class code effective date of this scenario.

**Personal Services Expenditure Detail**  
**Department of Family and Community Services**

**Scenario:** FY2024 Governor (19867)  
**Component:** Pioneer Homes (3323)  
**RDU:** Alaska Pioneer Homes (503)

PCN	Job Class Title	Time Status	Retire Code	Barg Unit	Location	Salary Sched	Range / Step	Comp Months	Split / Count	Annual Salaries	COLA	Premium Pay	Annual Benefits	Total Costs	UGF Amount
02-7437	Certified Nurse Aide 1	FT	A	GP	Anchorage	100	11J / K	12.0		50,762	1,996	5,500	42,584	100,842	3,882
02-7438	Certified Nurse Aide 1	FT	A	GP	Anchorage	100	11G	12.0		47,327	1,874	5,500	41,144	95,845	3,690
02-7439	Certified Nurse Aide 1	FT	A	GP	Anchorage	100	11A / B	12.0		40,385	1,433	0	35,928	77,746	2,993
02-7443	Certified Nurse Aide 1	FT	A	GP	Anchorage	100	11B / C	12.0		41,672	1,656	5,000	38,564	86,892	3,345
02-7445	Maint Gen Fman	FT	A	LL	Anchorage	1AA	52K	12.0		69,375	3,292	2,000	49,193	123,860	4,769
02-7446	Maint Gen Jrny	FT	A	LL	Anchorage	1AA	54J / K	12.0		60,849	2,899	2,000	45,619	111,367	4,288
02-7447	Maint Gen Jrny	FT	A	LL	Anchorage	1AA	54B / C	12.0		50,712	2,431	2,000	41,369	96,512	3,716
02-7452	Certified Nurse Aide 1	FT	A	GP	Anchorage	100	11O / P	12.0		58,695	2,260	5,000	45,700	111,655	4,299
02-7453	Maint Gen Jrny	FT	A	LL	Anchorage	1AA	54D / E	12.0		53,993	2,583	2,000	42,745	101,321	3,901
02-7455	Certified Nurse Aide 1	FT	A	GP	Anchorage	100	11C / D	12.0		42,823	1,697	5,000	39,046	88,566	3,410
02-7456	Certified Nurse Aide 1	FT	A	GP	Anchorage	100	11F	12.0		45,747	1,801	5,000	40,272	92,820	3,574
02-7462	Certified Nurse Aide 1	FT	A	GP	Anchorage	100	11P / Q	12.0		61,415	2,356	5,000	46,840	115,611	4,451
02-7463	Certified Nurse Aide 1	FT	A	GP	Anchorage	100	11J / K	12.0		50,429	1,967	5,000	42,234	99,630	3,836
02-7464	Certified Nurse Aide 1	FT	A	GP	Anchorage	100	11A / B	12.0		40,385	1,433	0	35,928	77,746	2,993
02-7467	Certified Nurse Aide 1	PT	A	GP	Anchorage	100	11A / B	6.0		20,192	716	0	13,214	34,122	1,314
02-7470	Certified Nurse Aide 1	FT	A	GP	Anchorage	100	11B / C	12.0		41,672	1,656	5,000	38,564	86,892	3,345
02-7474	Recreation Therapist 2	FT	A	SS	Anchorage	99	16S / T	12.0		99,010	1,405	0	63,178	163,593	6,298
02-7475	Recreation Assistant	FT	A	GP	Anchorage	99	11N	12.0		52,923	1,878	0	41,184	95,985	3,695
02-7476	Supply Technician 2	FT	A	GP	Anchorage	100	12J	12.0		52,767	1,872	0	41,119	95,758	3,687
02-7477	Assisted Living Aide	FT	A	GP	Anchorage	100	9A / B	12.0		35,900	1,451	5,000	36,144	78,495	5,377
02-7478	Certified Nurse Aide 1	FT	A	GP	Anchorage	100	11G	12.0		47,327	1,857	5,000	40,934	95,118	6,516
02-7480	Pharmacy Technician	FT	A	GP	Anchorage	100	12E / F	12.0		48,853	1,733	0	39,478	90,064	6,169
02-7484	Certified Nurse Aide 1	PT	A	GP	Anchorage	100	11A / B	8.0		26,566	943	0	17,469	44,978	3,081
02-7486	Certified Nurse Aide 1	FT	A	GP	Anchorage	100	11J / K	12.0		50,762	1,978	5,000	42,374	100,114	6,858
02-7487	Certified Nurse Aide 1	FT	A	GP	Anchorage	100	11A / B	12.0		40,385	1,433	0	35,928	77,746	5,326
02-7488	Certified Nurse Aide 1	FT	A	GP	Anchorage	100	11F	12.0		45,747	1,801	5,000	40,272	92,820	6,358
02-7489	Nurse 2	FT	A	GP	Anchorage	100	22D / E	12.0		93,776	3,505	5,000	60,406	162,687	11,144
02-7496	Certified Nurse Aide 1	FT	A	GP	Anchorage	100	11G	12.0		47,327	1,679	0	38,838	87,844	6,017
02-7499	Certified Nurse Aide 1	FT	A	GP	Anchorage	100	11N	12.0		56,024	2,165	5,000	44,580	107,769	7,382
02-7529	Assisted Living Aide	FT	A	GP	Anchorage	100	9J / K	12.0		44,226	1,791	6,250	40,158	92,425	6,331
02-7540	Pioneers Home Administrator	FT	A	XE	Anchorage	N00	23A / B	12.0		88,695	0	0	58,710	147,405	10,097
02-7541	Nurse 1	FT	A	GP	Anchorage	100	21A / B	12.0		78,484	3,006	6,250	54,519	142,259	5,477
02-7542	Certified Nurse Aide 1	FT	A	GP	Anchorage	100	11D / E	12.0		44,343	1,795	6,250	40,207	92,595	6,343
02-7543	Licensed Practical Nurse	FT	A	GP	Anchorage	99	17O	12.0		85,448	3,253	6,250	57,438	152,389	10,439
02-7545	Assisted Living Aide	FT	A	GP	Anchorage	100	9A / B	12.0		35,900	1,495	6,250	36,668	80,313	5,501
02-7546	Licensed Practical Nurse	FT	A	GP	Anchorage	99	17P	12.0		86,288	3,283	6,250	57,791	153,612	10,522
02-7547	Licensed Practical Nurse	FT	A	GP	Anchorage	100	17L	12.0		79,541	3,044	6,250	54,962	143,797	9,850
02-7548	Certified Nurse Aide 1	FT	A	GP	Anchorage	100	11L	12.0		52,553	2,086	6,250	43,649	104,538	7,161

Note: If a position is split, an asterisk (\*) will appear in the Split/Count column. If the split position is also counted in the component, two asterisks (\*\*) will appear in this column. [No valid job title] appearing in the Job Class Title indicates that the PCN has an invalid class code or invalid range for the class code effective date of this scenario.

**Personal Services Expenditure Detail**  
**Department of Family and Community Services**

**Scenario:** FY2024 Governor (19867)  
**Component:** Pioneer Homes (3323)  
**RDU:** Alaska Pioneer Homes (503)

PCN	Job Class Title	Time Status	Retire Code	Barg Unit	Location	Salary Sched	Range / Step	Comp Months	Split / Count	Annual Salaries	COLA	Premium Pay	Annual Benefits	Total Costs	UGF Amount
02-7549	Certified Nurse Aide 1	FT	A	GP	Anchorage	100	11L / M	12.0		53,125	2,107	6,250	43,889	105,371	7,218
02-7550	Certified Nurse Aide 1	FT	A	GP	Anchorage	100	11B / C	12.0		41,436	1,692	6,250	38,989	88,367	6,053
02-7551	Certified Nurse Aide 1	FT	A	GP	Anchorage	100	11O	12.0		57,837	2,274	6,250	45,864	112,225	7,687
02-7552	Certified Nurse Aide 1	FT	A	GP	Anchorage	100	11C / D	12.0		41,936	1,710	6,250	39,198	89,094	6,103
02-7553	Certified Nurse Aide 1	FT	A	GP	Anchorage	100	11E / F	12.0		45,104	1,822	6,250	40,526	93,702	6,419
02-7554	Certified Nurse Aide 2	FT	A	GP	Anchorage	100	12R / S	12.0		69,561	2,690	6,250	50,779	129,280	8,856
02-7555	Certified Nurse Aide 1	FT	A	GP	Anchorage	100	11J	12.0		49,296	1,971	6,250	42,284	99,801	6,836
02-7556	Certified Nurse Aide 1	FT	A	GP	Anchorage	100	11M	12.0		54,269	2,147	6,250	44,368	107,034	7,332
02-7557	Certified Nurse Aide 1	FT	A	GP	Anchorage	100	11J / K	12.0		50,562	2,016	6,250	42,814	101,642	6,963
02-7559	Assisted Living Aide	FT	A	GP	Anchorage	100	9A / B	12.0		35,900	1,495	6,250	36,668	80,313	5,501
02-7560	Assisted Living Aide	FT	A	GP	Anchorage	100	9E / F	12.0		39,893	1,637	6,250	38,342	86,122	5,899
02-7562	Maint Gen Jrny	FT	A	LL	Anchorage	1AA	54J	12.0		58,645	2,797	2,000	44,695	108,137	7,407
02-7573	Certified Nurse Aide 1	FT	A	GP	Anchorage	100	11F / G	12.0		47,063	1,670	0	38,727	87,460	5,991
02-7574	Accounting Technician 3	FT	A	GP	Anchorage	100	16O	12.0		81,920	2,907	0	53,340	138,167	9,464
02-7576	Licensed Practical Nurse	FT	A	GP	Anchorage	100	17C / D	12.0		64,896	2,524	6,250	48,823	122,493	8,391
02-7577	Nurse 2	FT	A	GP	Anchorage	100	22C / C	12.0		87,614	3,330	6,250	58,346	155,540	10,655
02-7579	Assisted Living Aide	FT	A	GP	Anchorage	100	9A / B	12.0		35,900	1,495	6,250	36,668	80,313	5,501
02-7580	Nurse 2	FT	A	GP	Anchorage	100	22K	12.0		107,991	4,053	6,250	66,888	185,182	12,685
02-7581	Licensed Practical Nurse	FT	A	GP	Anchorage	100	17D / E	12.0		65,988	2,563	6,250	49,281	124,082	8,500
02-7582	Certified Nurse Aide 1	FT	A	GP	Anchorage	100	11D / E	12.0		43,641	1,770	6,250	39,913	91,574	6,273
02-7583	Assisted Living Aide	FT	A	GP	Anchorage	100	9A / B	12.0		35,579	1,484	6,250	36,533	79,846	5,470
02-7584	Certified Nurse Aide 1	FT	A	GP	Anchorage	100	11C / D	12.0		42,464	1,728	6,250	39,420	89,862	6,156
02-7585	Certified Nurse Aide 1	FT	A	GP	Anchorage	100	11B / C	12.0		41,489	1,694	6,250	39,011	88,444	6,058
02-7586	Certified Nurse Aide 2	FT	A	GP	Anchorage	100	12Q	12.0		66,027	2,564	6,250	49,297	124,138	8,504
02-7587	Certified Nurse Aide 1	FT	A	GP	Anchorage	100	11D / E	12.0		44,109	1,787	6,250	40,109	92,255	6,320
02-7588	Certified Nurse Aide 1	FT	A	GP	Anchorage	100	11N	12.0		56,024	2,209	6,250	45,104	109,587	7,507
02-7589	Certified Nurse Aide 1	FT	A	GP	Anchorage	100	11E / F	12.0		44,636	1,805	6,250	40,330	93,021	6,372
02-7590	Certified Nurse Aide 1	FT	A	GP	Anchorage	100	11A / B	12.0		40,385	1,655	6,250	38,548	86,838	5,948
02-7591	Certified Nurse Aide 1	FT	A	GP	Anchorage	100	11M / N	12.0		54,546	2,157	6,250	44,484	107,437	7,359
02-7592	Certified Nurse Aide 1	FT	A	GP	Anchorage	100	11M / N	12.0		54,546	2,157	6,250	44,484	107,437	7,359
02-7593	Certified Nurse Aide 1	FT	A	GP	Anchorage	100	11A / B	12.0		40,385	1,433	0	35,928	77,746	5,326
02-7594	Certified Nurse Aide 1	FT	A	GG	Anchorage	100	11A / B	12.0		40,794	1,669	6,250	38,720	87,433	5,989
02-7597	Med I/S Asst	FT	A	GP	Anchorage	100	10M	12.0		50,876	1,805	0	40,326	93,007	6,371
02-7600	Pioneers Home Administrator	FT	A	XE	Ketchikan	N00	23C / D	12.0		95,067	0	0	61,381	156,448	10,717
02-7601	Certified Nurse Aide 1	FT	A	GP	Ketchikan	100	11N / O	12.0		56,855	2,195	5,000	44,928	108,978	7,465
02-7602	Administrative Assistant 1	FT	A	GP	Ketchikan	100	12C / D	12.0		45,104	1,600	0	37,906	84,610	5,796
02-7603	Certified Nurse Aide 1	FT	A	GP	Ketchikan	100	11E / F	12.0		45,045	1,776	5,000	39,978	91,799	6,288
02-7605	Nurse 2	FT	A	GP	Ketchikan	100	22C / D	12.0		88,680	3,324	5,000	58,269	155,273	10,636

Note: If a position is split, an asterisk (\*) will appear in the Split/Count column. If the split position is also counted in the component, two asterisks (\*\*) will appear in this column. [No valid job title] appearing in the Job Class Title indicates that the PCN has an invalid class code or invalid range for the class code effective date of this scenario.

**Personal Services Expenditure Detail**  
**Department of Family and Community Services**

**Scenario:** FY2024 Governor (19867)  
**Component:** Pioneer Homes (3323)  
**RDU:** Alaska Pioneer Homes (503)

PCN	Job Class Title	Time Status	Retire Code	Barg Unit	Location	Salary Sched	Range / Step	Comp Months	Split / Count	Annual Salaries	COLA	Premium Pay	Annual Benefits	Total Costs	UGF Amount
02-7606	Certified Nurse Aide 1	FT	A	GP	Ketchikan	100	11D / E	12.0		43,454	1,719	5,000	39,311	89,484	6,130
02-7607	Licensed Practical Nurse	FT	A	GP	Ketchikan	100	17A / B	12.0		58,320	2,247	5,000	45,542	111,109	7,611
02-7608	Certified Nurse Aide 1	FT	A	GP	Ketchikan	100	11C / D	12.0		42,939	1,745	6,250	39,619	90,553	6,203
02-7609	Certified Nurse Aide 1	FT	A	GP	Ketchikan	100	11A	12.0		39,312	1,617	6,250	38,098	85,277	5,842
02-7610	Nurse 3	FT	A	GP	Ketchikan	100	24C / D	12.0		104,082	3,915	6,250	65,250	179,497	12,296
02-7611	Pio Hm Asst Adm	FT	A	SS	Ketchikan	100	21C / D	12.0		86,923	1,234	0	58,111	146,268	10,019
02-7612	Certified Nurse Aide 1	FT	A	GP	Ketchikan	100	11B / D	12.0		42,407	1,726	6,250	39,396	89,779	6,150
02-7613	Certified Nurse Aide 2	FT	A	GP	Ketchikan	100	12N	12.0		59,982	2,350	6,250	46,763	115,345	7,901
02-7614	Certified Nurse Aide 1	FT	A	GP	Anchorage	100	11B / C	12.0		41,672	1,700	6,250	39,088	88,710	6,077
02-7615	Assisted Living Aide	FT	A	GP	Ketchikan	100	9B / C	12.0		36,501	1,517	6,250	36,920	81,188	5,561
02-7616	Certified Nurse Aide 1	FT	A	GP	Ketchikan	100	11E / F	12.0		45,221	1,826	6,250	40,575	93,872	6,430
02-7617	Assisted Living Aide	FT	A	GP	Ketchikan	100	9B / C	12.0		36,176	1,505	6,250	36,784	80,715	5,529
02-7618	Certified Nurse Aide 1	FT	A	GP	Ketchikan	100	11E / F	12.0		45,455	1,834	6,250	40,673	94,212	6,454
02-7619	Assisted Living Aide	FT	A	GP	Ketchikan	100	9B / C	12.0		36,322	1,510	6,250	36,845	80,927	5,544
02-7620	Assisted Living Aide	FT	A	GP	Ketchikan	100	9A / B	12.0		35,900	1,495	6,250	36,668	80,313	5,501
02-7621	Certified Nurse Aide 2	FT	A	GP	Ketchikan	100	12N / O	12.0		60,145	2,356	6,250	46,831	115,582	7,917
02-7623	Pro Svcs Sp 3	FT	A	SS	Ketchikan	500	19A / B	12.0		72,217	1,025	0	51,946	125,188	8,575
02-7624	Certified Nurse Aide 1	FT	A	GP	Ketchikan	100	11P	12.0		59,709	2,340	6,250	46,649	114,948	7,874
02-7630	Certified Nurse Aide 2	FT	A	GP	Ketchikan	100	12F	12.0		48,906	1,957	6,250	42,120	99,233	6,798
02-7631	Pro Svcs Sp 1	FT	A	GP	Ketchikan	100	15B / C	12.0		53,681	1,905	0	41,502	97,088	6,651
02-7632	Certified Nurse Aide 1	FT	A	GG	Anchorage	100	11Q	12.0		61,659	2,409	6,250	47,466	117,784	8,068
02-7633	Assisted Living Aide	FT	A	GP	Ketchikan	100	9B / C	12.0		36,688	1,523	6,250	36,998	81,459	5,580
02-7634	Certified Nurse Aide 2	FT	A	GP	Ketchikan	100	12A / B	12.0		42,939	1,745	6,250	39,619	90,553	6,203
02-7635	Maint Gen Fman	FT	A	LL	Ketchikan	1AA	52F / J	12.0		64,849	3,083	2,000	47,296	117,228	8,030
02-7638	Maint Gen Jrny	FT	A	LL	Ketchikan	1AA	54A / B	12.0		48,815	2,344	2,000	40,574	93,733	6,421
02-7648	Assisted Living Aide	FT	A	GP	Ketchikan	100	9A / B	12.0		35,570	1,484	6,250	36,530	79,834	5,469
02-7669	Certified Nurse Aide 2	FT	A	GP	Ketchikan	100	12A / B	12.0		42,939	1,745	6,250	39,619	90,553	6,203
02-7670	Administrative Assistant 3	FT	A	SS	Ketchikan	100	15J / K	12.0		68,060	966	0	50,203	119,229	8,167
02-7671	Certified Nurse Aide 1	FT	A	GP	Ketchikan	100	11A / B	12.0		40,385	1,655	6,250	38,548	86,838	5,948
02-7800	Pioneers Home Administrator	FT	A	XE	Juneau	N05	23E	12.0		105,905	0	0	65,924	171,829	11,770
02-7801	Certified Nurse Aide 1	FT	A	GP	Juneau	105	11A / B	12.0		0	0	0	0	0	0
02-7802	Assisted Living Aide	FT	A	GP	Juneau	105	9B / C	12.0		38,038	1,571	6,250	37,564	83,423	5,715
02-7803	Certified Nurse Aide 1	FT	A	GP	Juneau	105	11N	12.0		58,832	2,309	6,250	46,281	113,672	7,787
02-7804	Maint Gen Fman	FT	A	LL	Juneau	1AA	52O	12.0		80,397	3,800	2,000	53,813	140,010	9,591
02-7805	Pro Svcs Sp 3	FT	A	GP	Juneau	105	19A / B	12.0		71,632	2,542	0	49,027	123,201	8,439
02-7806	Administrative Assistant 3	FT	A	SS	Juneau	105	15L	12.0		74,090	1,051	0	52,731	127,872	8,759
02-7810	Maint Gen Jrny	FT	A	LL	Juneau	1AA	54N	12.0		67,961	3,227	2,000	48,600	121,788	8,343
02-7812	Recreation Therapist 2	FT	A	SS	Juneau	105	16F / J	12.0		73,862	1,048	0	52,636	127,546	8,737

Note: If a position is split, an asterisk (\*) will appear in the Split/Count column. If the split position is also counted in the component, two asterisks (\*\*) will appear in this column. [No valid job title] appearing in the Job Class Title indicates that the PCN has an invalid class code or invalid range for the class code effective date of this scenario.

**Personal Services Expenditure Detail**  
**Department of Family and Community Services**

**Scenario:** FY2024 Governor (19867)  
**Component:** Pioneer Homes (3323)  
**RDU:** Alaska Pioneer Homes (503)

PCN	Job Class Title	Time Status	Retire Code	Barg Unit	Location	Salary Sched	Range / Step	Comp Months	Split / Count	Annual Salaries	COLA	Premium Pay	Annual Benefits	Total Costs	UGF Amount
02-7813	Assisted Living Aide	FT	A	GP	Juneau	105	9C / D	12.0		39,871	1,636	6,250	38,333	86,090	5,897
02-7814	Certified Nurse Aide 1	FT	A	GP	Juneau	105	11G	12.0		49,686	1,985	6,250	42,447	100,368	6,875
02-7815	Assisted Living Aide	FT	A	GP	Juneau	105	9B / C	12.0		37,788	1,562	6,250	37,459	83,059	5,690
02-7816	Nurse 3	FT	A	GP	Juneau	105	24J / K	12.0		128,520	4,782	6,250	75,494	215,046	14,731
02-7817	Licensed Practical Nurse	FT	A	GP	Juneau	105	17B / C	12.0		65,774	2,555	6,250	49,191	123,770	8,478
02-7818	Nurse 3	FT	A	GP	Juneau	105	24B / C	12.0		104,297	3,922	6,250	65,340	179,809	12,317
02-7819	A/L Care Coord	FT	A	SS	Juneau	105	17A / B	12.0		66,277	941	0	49,456	116,674	7,992
02-7820	Licensed Practical Nurse	FT	A	GP	Juneau	105	17L	12.0		83,519	3,185	6,250	56,630	149,584	10,247
02-7821	Assisted Living Aide	FT	A	GP	Juneau	105	9B / C	12.0		38,150	1,575	6,250	37,611	83,586	5,726
02-7822	Assisted Living Aide	FT	A	GP	Juneau	105	9D / E	12.0		40,846	1,671	6,250	38,741	87,508	5,994
02-7823	Licensed Practical Nurse	PT	A	GP	Juneau	105	17D / E	9.0		51,292	1,820	0	28,626	81,738	5,599
02-7824	Nurse 2	FT	N	GP	Palmer	100	22C / D	12.0		87,667	2,743	6,250	34,795	131,455	2,892
02-7825	Certified Nurse Aide 1	FT	A	GP	Juneau	105	11D / E	12.0		45,578	1,839	6,250	40,725	94,392	6,466
02-7826	Certified Nurse Aide 1	FT	A	GP	Juneau	105	11M / N	12.0		58,446	2,295	6,250	46,119	113,110	7,748
02-7827	Assisted Living Aide	FT	A	GP	Juneau	105	9B / C	12.0		38,107	1,352	0	34,973	74,432	5,099
02-7828	Certified Nurse Aide 1	FT	A	GP	Juneau	105	11B / C	12.0		43,668	1,771	6,250	39,924	91,613	6,276
02-7829	Certified Nurse Aide 1	FT	A	GP	Juneau	105	11M	12.0		56,979	2,199	5,000	44,980	109,158	7,477
02-7830	Assisted Living Aide	FT	A	GP	Juneau	105	9A / B	12.0		37,238	1,499	5,000	36,705	80,442	5,510
02-7831	Certified Nurse Aide 1	FT	A	GP	Juneau	105	11N	12.0		58,832	2,265	5,000	45,757	111,854	7,662
02-7832	Certified Nurse Aide 1	FT	A	GP	Juneau	105	11E / F	12.0		46,810	1,838	5,000	40,717	94,365	6,464
02-7833	Certified Nurse Aide 1	FT	A	GP	Juneau	105	11L	12.0		55,185	2,180	6,250	44,752	108,367	7,423
02-7834	Certified Nurse Aide 1	FT	A	GP	Juneau	105	11L / M	12.0		55,335	1,963	0	42,195	99,493	6,815
02-7835	Assisted Living Aide	FT	A	GP	Anchorage	100	9B / C	12.0		36,736	1,525	6,250	37,018	81,529	5,585
02-7836	Certified Nurse Aide 1	FT	A	GP	Juneau	105	11B / C	12.0		42,536	1,731	6,250	39,450	89,967	6,163
02-7838	Administrative Assistant 1	FT	A	GP	Juneau	105	12K	12.0		57,213	2,030	0	42,982	102,225	7,002
02-7839	Pio Hm Asst Adm	FT	A	SS	Juneau	105	21C / D	12.0		93,680	1,330	0	60,943	155,953	10,683
02-7840	Certified Nurse Aide 1	FT	A	GP	Anchorage	100	11G	12.0		47,327	1,679	0	38,838	87,844	6,017
02-7841	Certified Nurse Aide 1	FT	A	GP	Juneau	105	11B / C	12.0		42,738	1,738	6,250	39,534	90,260	6,183
02-7842	Certified Nurse Aide 1	FT	A	GP	Juneau	105	11F	12.0		48,029	1,926	6,250	41,752	97,957	6,710
02-7843	Certified Nurse Aide 1	FT	A	GP	Juneau	105	11Q	12.0		64,740	2,519	6,250	48,758	122,267	8,375
02-7901	Certified Nurse Aide 1	FT	A	GP	Sitka	105	11G	12.0		49,686	1,985	6,250	42,447	100,368	6,875
02-7903	Certified Nurse Aide 1	FT	A	GP	Sitka	105	11O	12.0		60,723	2,376	6,250	47,074	116,423	7,975
02-7904	Certified Nurse Aide 1	FT	A	GP	Juneau	105	11N	12.0		58,832	2,309	6,250	46,281	113,672	7,787
02-7905	Certified Nurse Aide 1	FT	A	GP	Sitka	105	11J	12.0		51,753	2,058	6,250	43,313	103,374	7,081
02-7907	Certified Nurse Aide 1	FT	A	GP	Palmer	100	11B / C	12.0		41,371	1,690	6,250	38,961	88,272	1,942
02-7908	Certified Nurse Aide 1	FT	A	GP	Palmer	100	11J	12.0		49,296	1,971	6,250	42,284	99,801	2,196
02-7909	Med I/S Asst	FT	A	GP	Palmer	99	10P	12.0		54,864	1,947	0	41,998	98,809	2,174
02-7912	Assisted Living Aide	FT	A	GP	Sitka	105	9B / C	12.0		38,193	1,577	6,250	37,629	83,649	5,730

Note: If a position is split, an asterisk (\*) will appear in the Split/Count column. If the split position is also counted in the component, two asterisks (\*\*) will appear in this column. [No valid job title] appearing in the Job Class Title indicates that the PCN has an invalid class code or invalid range for the class code effective date of this scenario.

**Personal Services Expenditure Detail**  
**Department of Family and Community Services**

**Scenario:** FY2024 Governor (19867)  
**Component:** Pioneer Homes (3323)  
**RDU:** Alaska Pioneer Homes (503)

PCN	Job Class Title	Time Status	Retire Code	Barg Unit	Location	Salary Sched	Range / Step	Comp Months	Split / Count	Annual Salaries	COLA	Premium Pay	Annual Benefits	Total Costs	UGF Amount
02-7913	Certified Nurse Aide 1	FT	A	GP	Sitka	105	11L / M	12.0		55,409	2,188	6,250	44,846	108,693	7,446
02-7917	Pharmacy Technician	FT	A	GP	Anchorage	99	12O	12.0		60,683	2,153	0	44,437	107,273	7,348
02-7918	Certified Nurse Aide 1	FT	A	GP	Palmer	100	11M	12.0		54,269	2,147	6,250	44,368	107,034	2,355
02-7919	Certified Nurse Aide 1	FT	A	GP	Anchorage	100	11Q / R	12.0		62,077	2,424	6,250	47,641	118,392	8,110
02-7921	Licensed Practical Nurse	FT	A	GP	Anchorage	100	17B / C	12.0		62,634	2,444	6,250	47,875	119,203	8,165
02-7922	Licensed Practical Nurse	FT	A	GP	Anchorage	100	17B / C	12.0		62,143	2,427	6,250	47,669	118,489	8,117
02-7923	Licensed Practical Nurse	FT	A	GP	Anchorage	100	17E / F	12.0		67,196	2,606	6,250	49,787	125,839	8,620
02-7924	Certified Nurse Aide 1	FT	A	GP	Anchorage	100	11L / M	12.0		53,182	2,109	6,250	43,913	105,454	7,224
02-7925	Certified Nurse Aide 1	FT	A	GP	Anchorage	100	11G	12.0		47,327	1,901	6,250	41,458	96,936	6,640
02-7926	Nurse 1	FT	A	GP	Ketchikan	100	21A / B	12.0		78,249	2,998	6,250	54,421	141,918	9,721
02-7928	Pro Svcs Sp 2	FT	A	GP	Anchorage	100	17F / G	12.0		71,197	2,526	0	48,844	122,567	8,396
02-7930	Nurse 3	FT	A	GP	Anchorage	100	24D / E	12.0		107,757	4,045	6,250	66,790	184,842	12,662
02-7931	Certified Nurse Aide 1	FT	A	GP	Fairbanks	103	11A / B	12.0		41,594	1,698	6,250	39,055	88,597	6,069
02-7932	Certified Nurse Aide 1	FT	A	GP	Fairbanks	103	11N / O	12.0		59,495	2,333	6,250	46,559	114,637	7,853
02-7933	Certified Nurse Aide 1	FT	A	GP	Fairbanks	103	11Q / R	12.0		63,598	2,478	6,250	48,279	120,605	8,261
02-7934	Assisted Living Aide	FT	A	GP	Sitka	105	9C / D	12.0		39,975	1,640	6,250	38,376	86,241	5,908
02-7935	Certified Nurse Aide 1	FT	A	GP	Fairbanks	103	11Q	12.0		63,512	2,475	6,250	48,243	120,480	8,253
02-7936	Certified Nurse Aide 1	FT	A	GP	Fairbanks	103	11B / C	12.0		42,378	1,725	6,250	39,384	89,737	6,147
02-7937	Assisted Living Aide	FT	A	GP	Fairbanks	103	9B / C	12.0		37,623	1,557	6,250	37,390	82,820	5,673
02-7941	Assisted Living Aide	FT	A	GP	Fairbanks	103	9A / B	12.0		36,680	1,523	6,250	36,995	81,448	5,579
02-7943	Assisted Living Aide	FT	A	GP	Ketchikan	100	9B / C	12.0		36,208	1,506	6,250	36,797	80,761	5,532
02-7944	Assisted Living Aide	FT	A	GP	Ketchikan	100	9D / E	12.0		39,052	1,607	6,250	37,989	84,898	5,816
02-7945	Certified Nurse Aide 1	FT	A	GP	Ketchikan	100	11A / B	12.0		40,385	1,655	6,250	38,548	86,838	5,948
02-7946	Pio Hm Asst Adm	FT	A	SS	Fairbanks	103	21C / D	12.0		91,625	1,300	0	60,082	153,007	10,481
02-7949	Certified Nurse Aide 1	FT	A	GP	Sitka	105	11C / D	12.0		43,791	1,775	6,250	39,976	91,792	6,288
02-7950	Certified Nurse Aide 1	FT	A	GP	Sitka	105	11P / Q	12.0		64,740	2,519	6,250	48,758	122,267	8,375
02-7951	Assisted Living Aide	FT	A	GP	Sitka	99	9O / P	12.0		52,105	2,070	6,250	43,461	103,886	7,116
02-7953	Certified Nurse Aide 1	FT	A	GP	Anchorage	100	11O / P	12.0		59,319	2,326	6,250	46,485	114,380	7,835
02-7955	Licensed Practical Nurse	FT	A	GP	Anchorage	100	17G	12.0		71,624	2,763	6,250	51,643	132,280	9,061
02-7956	Certified Nurse Aide 1	FT	A	GP	Anchorage	100	11G / J	12.0		48,393	1,939	6,250	41,905	98,487	6,746
02-7958	Nurse 2	FT	A	GP	Palmer	100	22B / C	12.0		87,369	3,322	6,250	58,244	155,185	3,414
06-6040	Certified Nurse Aide 1	FT	A	GP	Fairbanks	103	11G	12.0		48,750	1,951	6,250	42,055	99,006	6,782
06-6079	Certified Nurse Aide 1	FT	A	GP	Anchorage	100	11K / L	12.0		52,414	2,081	6,250	43,591	104,336	7,147
06-6120	Certified Nurse Aide 1	FT	A	GP	Anchorage	100	11A / B	12.0		40,385	1,655	6,250	38,548	86,838	5,948
06-6129	Certified Nurse Aide 1	FT	A	GP	Anchorage	100	11E / F	12.0		44,636	1,805	6,250	40,330	93,021	6,372
06-6147	Certified Nurse Aide 1	FT	A	GP	Fairbanks	103	11B / C	12.0		42,688	1,736	6,250	39,513	90,187	6,178
06-6161	Certified Nurse Aide 1	FT	A	GP	Anchorage	100	11L / M	12.0		53,768	2,129	6,250	44,158	106,305	7,282
06-6188	Nurse 1	FT	A	GP	Juneau	105	21B / C	12.0		83,623	2,967	0	54,053	140,643	9,634

Note: If a position is split, an asterisk (\*) will appear in the Split/Count column. If the split position is also counted in the component, two asterisks (\*\*) will appear in this column. [No valid job title] appearing in the Job Class Title indicates that the PCN has an invalid class code or invalid range for the class code effective date of this scenario.

**Personal Services Expenditure Detail**  
**Department of Family and Community Services**

**Scenario:** FY2024 Governor (19867)  
**Component:** Pioneer Homes (3323)  
**RDU:** Alaska Pioneer Homes (503)

PCN	Job Class Title	Time Status	Retire Code	Barg Unit	Location	Salary Sched	Range / Step	Comp Months	Split / Count	Annual Salaries	COLA	Premium Pay	Annual Benefits	Total Costs	UGF Amount
06-6189	Certified Nurse Aide 1	FT	A	GP	Juneau	105	11O / P	12.0		61,790	2,414	6,250	47,521	117,975	8,081
06-6190	Assisted Living Aide	FT	A	GP	Juneau	105	9B / C	12.0		38,538	1,589	6,250	37,774	84,151	5,764
06-6192	Certified Nurse Aide 2	FT	A	GP	Fairbanks	103	12C / D	12.0		47,112	1,893	6,250	41,368	96,623	6,619
06-6194	Nurse 2	PT	A	GP	Anchorage	100	22A	9.0		61,410	2,179	0	32,868	96,457	6,607
06-6195	Certified Nurse Aide 1	FT	A	GP	Fairbanks	103	11A / B	12.0		40,714	1,666	6,250	38,686	87,316	5,981
06-6196	Certified Nurse Aide 2	FT	A	GP	Fairbanks	103	12K / L	12.0		56,350	2,221	6,250	45,241	110,062	7,539
06-6199	Certified Nurse Aide 1	FT	A	GP	Fairbanks	103	11A / B	12.0		40,853	1,671	6,250	38,744	87,518	5,995
06-6200	Certified Nurse Aide 1	FT	A	GP	Anchorage	100	11F	12.0		45,747	1,845	6,250	40,796	94,638	6,483
06-6201	Certified Nurse Aide 1	FT	A	GP	Anchorage	100	11G / J	12.0		49,132	1,965	6,250	42,215	99,562	6,820
06-6203	A/L Care Coord	FT	A	SS	Anchorage	100	17E	12.0		71,074	1,097	6,250	54,087	132,508	9,077
06-6204	Nurse 2	FT	A	GP	Anchorage	100	22E / F	12.0		94,348	3,569	6,250	61,169	165,336	11,326
06-6205	Nurse 2	FT	A	GP	Anchorage	100	22M	12.0		115,128	4,306	6,250	69,880	195,564	13,396
06-6206	Certified Nurse Aide 1	FT	A	GP	Ketchikan	100	11J	12.0		49,296	1,971	6,250	42,284	99,801	6,836
06-6207	Certified Nurse Aide 1	FT	A	GP	Anchorage	100	11N / O	12.0		56,401	2,223	6,250	45,262	110,136	7,544
06-6208	Pharmacy Technician	FT	A	GP	Anchorage	100	12J	12.0		52,767	1,872	0	41,119	95,758	6,559
06-6209	Pro Svcs Sp 3	FT	A	GP	Anchorage	100	19D / E	12.0		75,862	2,692	0	50,800	129,354	8,861
06-6210	Certified Nurse Aide 1	FT	A	GP	Sitka	105	11N	12.0		58,832	2,309	6,250	46,281	113,672	7,787
06-6211	Nurse 2	FT	A	GP	Palmer	100	22C / D	12.0		90,305	3,426	6,250	59,475	159,456	3,508
06-6212	Nurse 2	FT	A	GP	Palmer	100	22K	12.0		107,991	4,053	6,250	66,888	185,182	4,074
06-6213	Assisted Living Aide	FT	A	GP	Palmer	100	9A / B	12.0		35,900	1,495	6,250	36,668	80,313	1,767
06-6214	Certified Nurse Aide 1	FT	A	GP	Palmer	100	11M / N	12.0		54,488	2,155	6,250	44,460	107,353	2,362
06-6217	Assisted Living Aide	PT	A	GP	Sitka	105	9A / B	9.0		28,270	1,003	0	18,975	48,248	3,305
06-6220	Maint Gen Jrny	FT	A	LL	Palmer	1BB	54J / K	12.0		61,459	2,927	2,000	45,875	112,261	2,470
06-6222	Licensed Practical Nurse	FT	A	GP	Anchorage	100	17C / D	12.0		62,823	2,451	6,250	47,954	119,478	8,184
06-6223	Certified Nurse Aide 1	FT	A	GP	Juneau	105	11M / N	12.0		57,982	2,279	6,250	45,925	112,436	7,702
06-6224	Assisted Living Aide	FT	A	GP	Anchorage	100	9A / B	12.0		35,900	1,495	6,250	36,668	80,313	5,501
06-6225	Certified Nurse Aide 1	FT	A	GP	Juneau	105	11N / O	12.0		59,068	2,317	6,250	46,380	114,015	7,810
06-6226	Nurse 2	FT	A	GP	Sitka	105	22F	12.0		102,063	3,843	6,250	64,403	176,559	12,094
06-6228	Certified Nurse Aide 1	FT	A	GP	Sitka	105	11M	12.0		56,979	2,243	6,250	45,504	110,976	7,602
06-6230	Pio Hm Asst Adm	FT	A	SS	Sitka	105	21B / C	12.0		88,402	1,255	0	58,731	148,388	10,165
06-6231	Maint Gen Jrny	FT	A	LL	Anchorage	1AA	54F	12.0		56,524	2,699	2,000	43,806	105,029	7,195
06-6232	Licensed Practical Nurse	FT	A	GP	Juneau	105	17J	12.0		78,351	3,002	6,250	54,463	142,066	9,732
06-6235	Certified Nurse Aide 1	FT	A	GP	Palmer	100	11O	12.0		57,837	2,274	6,250	45,864	112,225	2,469
06-6236	Certified Nurse Aide 1	FT	A	GP	Palmer	100	11N / O	12.0		57,459	2,260	6,250	45,705	111,674	2,457
06-6237	Certified Nurse Aide 1	FT	A	GP	Palmer	100	11C / D	12.0		42,548	1,731	6,250	39,455	89,984	1,980
06-6238	Certified Nurse Aide 1	FT	A	GP	Ketchikan	100	11M / N	12.0		54,620	2,160	6,250	44,515	107,545	7,367
06-6239	A/L Care Coord	FT	A	SS	Ketchikan	100	17D / E	12.0		69,765	1,079	6,250	53,538	130,632	8,948
06-6240	Nurse 2	FT	A	GP	Ketchikan	100	22A / B	12.0		82,212	3,139	6,250	56,082	147,683	10,116

Note: If a position is split, an asterisk (\*) will appear in the Split/Count column. If the split position is also counted in the component, two asterisks (\*\*) will appear in this column.  
[No valid job title] appearing in the Job Class Title indicates that the PCN has an invalid class code or invalid range for the class code effective date of this scenario.



**Personal Services Expenditure Detail**  
**Department of Family and Community Services**

**Scenario:** FY2024 Governor (19867)  
**Component:** Pioneer Homes (3323)  
**RDU:** Alaska Pioneer Homes (503)

PCN	Job Class Title	Time Status	Retire Code	Barg Unit	Location	Salary Sched	Range / Step	Comp Months	Split / Count	Annual Salaries	COLA	Premium Pay	Annual Benefits	Total Costs	UGF Amount
06-6241	Certified Nurse Aide 1	FT	A	GP	Fairbanks	103	11M / N	12.0		57,247	2,253	6,250	45,617	111,367	7,629
06-6242	Certified Nurse Aide 1	FT	A	GP	Fairbanks	103	11K	12.0		52,416	2,081	6,250	43,591	104,338	7,147
06-6243	Nurse 2	FT	A	GP	Anchorage	100	22F	12.0		97,208	3,671	6,250	62,368	169,497	11,611
06-7019	Nurse 3	FT	A	SS	Palmer	100	24M	12.0		133,598	1,985	6,250	80,297	222,130	4,887
06-9504	Certified Nurse Aide 1	FT	A	GP	Ketchikan	100	11G	12.0		47,327	1,901	6,250	41,458	96,936	6,640
06-N09002	Certified Nurse Aide 1	NP	N	GP	Ketchikan	100	11C / D	12.0		42,939	1,825	20,808	9,250	74,822	5,125
06-N09003	Licensed Practical Nurse	NP	N	GP	Ketchikan	100	17C / D	12.0		64,896	1,858	0	9,416	76,170	5,218
06-N09004	Nurse 1	NP	N	GP	Ketchikan	100	21C / D	12.0		84,942	2,432	0	12,325	99,699	6,829
06-N09005	Nurse 2	NP	N	GP	Ketchikan	100	22C / D	12.0		90,812	2,600	0	13,177	106,589	7,301
06-N09018	Certified Nurse Aide 1	NP	A	GP	Juneau	105	11C / D	12.0		45,084	1,898	21,224	9,621	77,827	5,331
06-N09020	Certified Nurse Aide 1	NP	A	GP	Anchorage	100	11C / D	12.0		42,939	1,229	0	6,230	50,398	3,452
06-N09021	Licensed Practical Nurse	NP	N	GP	Anchorage	100	17C / D	12.0		64,896	1,858	0	9,416	76,170	5,218
06-N09031	Certified Nurse Aide 1	NP	A	GP	Sitka	105	11A	12.0		41,282	1,182	0	5,990	48,454	3,319
06-N09033	Nurse 2	NP	N	GP	Sitka	105	22A	12.0		85,976	2,461	0	12,475	100,912	6,913
06-N09043	Certified Nurse Aide 1	NP	N	GP	Fairbanks	103	11C / D	12.0		44,226	1,266	0	6,417	51,909	3,556
06-N09044	Licensed Practical Nurse	NP	N	GP	Fairbanks	103	17C / D	12.0		66,846	1,914	0	9,699	78,459	5,374
06-N09045	Nurse 2	NP	N	GP	Fairbanks	103	22A / B	12.0		87,497	2,505	0	12,696	102,698	7,035
06-N09086	Nurse 2	NP	N	GP	Palmer	100	22C / D	12.0		90,812	2,600	0	13,177	106,589	2,345
06-N09087	Certified Nurse Aide 1	NP	N	GP	Palmer	100	11C / D	12.0		42,939	2,045	28,508	10,367	83,859	1,845
06-N15001	Licensed Practical Nurse	NP	N	GP	Palmer	100	17A / B	12.0		60,450	1,731	0	8,771	70,952	1,561
06-N15002	Assisted Living Aide	NP	N	GP	Palmer	100	9C / D	12.0		38,064	1,090	0	5,523	44,677	983
06-N18007	Assisted Living Aide	NP	N	GP	Juneau	205	9C / D	12.0		39,585	1,302	5,880	6,597	53,364	3,655
06-N18029	Assisted Living Aide	NP	N	GP	Ketchikan	100	9C / D	12.0		38,064	1,252	5,653	6,343	51,312	3,515
06-N20005	Licensed Practical Nurse	NP	A	GP	Juneau	105	17A	12.0		61,113	1,750	0	8,868	71,731	4,914
06-N20006	Nurse 1	NP	A	GP	Juneau	105	21A	12.0		80,535	2,306	0	11,686	94,527	6,475
06-N20007	Nurse 3	NP	N	GP	Juneau	105	24A	12.0		98,456	2,819	0	14,286	115,561	7,916
06-N21293	Assisted Living Aide	NP	N	GP	Anchorage	100	9A / B	12.0		35,900	1,028	0	5,209	42,137	2,886
06-N21294	Assisted Living Aide	NP	N	GP	Sitka	205	9C / D	12.0		39,585	1,302	5,880	6,597	53,364	3,655
06-N21295	Assisted Living Aide	NP	N	GP	Fairbanks	203	9C / D	12.0		38,825	1,174	2,182	5,950	48,131	3,297
06-N21383	Licensed Practical Nurse	NP	N	GP	Sitka	105	17K / L	12.0		83,519	2,439	0	33,047	119,005	8,152
06-N22018	Nurse 1	NP	N	GP	Palmer	100	21B / C	12.0		81,881	2,344	0	11,881	96,106	2,114
06-N22123	Nurse 2	NP	N	GP	Anchorage	100	22A / B	12.0		84,942	2,432	0	12,325	99,699	6,829
06-X113	Pharmacist (Adv Cert)	FT	A	XE	Anchorage	N00	27	12.0		150,910	0	0	84,790	235,700	16,146
06-X114	Pharmacist(Lead W/No Adv Cert)	FT	A	XE	Anchorage	N00	27	12.0		145,100	0	0	82,355	227,455	15,581

Note: If a position is split, an asterisk (\*) will appear in the Split/Count column. If the split position is also counted in the component, two asterisks (\*\*) will appear in this column. [No valid job title] appearing in the Job Class Title indicates that the PCN has an invalid class code or invalid range for the class code effective date of this scenario.

**Personal Services Expenditure Detail**  
**Department of Family and Community Services**

**Scenario:** FY2024 Governor (19867)  
**Component:** Pioneer Homes (3323)  
**RDU:** Alaska Pioneer Homes (503)

PCN	Job Class Title	Time Status	Retire Code	Barg Unit	Location	Salary Sched	Range / Step	Comp Months	Split / Count	Annual Salaries	COLA	Premium Pay	Annual Benefits	Total Costs	UGF Amount
		<b>Total Positions</b>	<b>New</b>	<b>Deleted</b>										<b>Total Salary Costs:</b>	26,764,507
														<b>Total COLA:</b>	930,813
	<b>Full Time Positions:</b>	411	0	1										<b>Total Premium Pay:</b>	1,954,635
	<b>Part Time Positions:</b>	12	0	0										<b>Total Benefits:</b>	19,525,754
	<b>Non Permanent Positions:</b>	27	0	0											
	<b>Positions in Component:</b>	450	0	1											
	<b>Total Component Months:</b>	5,348.0													
														<b>Total Pre-Vacancy:</b>	49,175,709
														<b>Minus Vacancy Adjustment of 6.23%:</b>	(3,061,809)
														<b>Total Post-Vacancy:</b>	46,113,900
														<b>Plus Lump Sum Premium Pay:</b>	0
														<b>Personal Services Line 100:</b>	46,113,900

<b>PCN Funding Sources:</b>	<b>Pre-Vacancy</b>	<b>Post-Vacancy</b>	<b>Percent</b>
1002 Federal Receipts	2,696,760	2,528,853	5.48%
1004 General Fund Receipts	2,533,095	2,375,378	5.15%
1005 General Fund/Program Receipts	21,970,069	20,602,155	44.68%
1007 Interagency Receipts	21,654,014	20,305,778	44.03%
1108 Statutory Designated Program Receipts	321,771	301,737	0.65%
<b>Total PCN Funding:</b>	<b>49,175,709</b>	<b>46,113,900</b>	<b>100.00%</b>

Note: If a position is split, an asterisk (\*) will appear in the Split/Count column. If the split position is also counted in the component, two asterisks (\*\*) will appear in this column. [No valid job title] appearing in the Job Class Title indicates that the PCN has an invalid class code or invalid range for the class code effective date of this scenario.

**Department of Family and Community Services**

**Division of Alaska Pioneer Homes**

**Anchorage Pioneer Home**

**Pioneer Homes Component**

PAGE

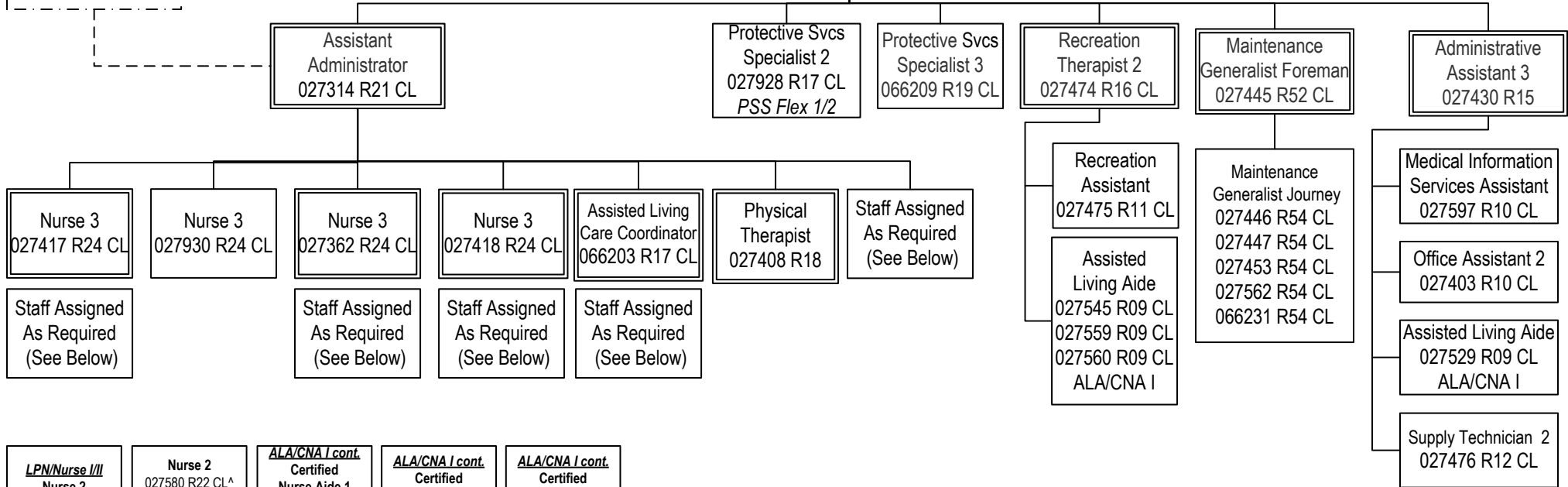
3 OF 9

REVISED

10/28/2022

PA/Advanced  
Practice RN 2  
02-7807 R24CL  
Palmer

PIONEERS HOME  
ADMINISTRATOR  
027540 R23 PX



<p><b>LPN/Nurse III</b> Nurse 2 027357 R22 CL # 027413 R22 CL # 027489 R22 CL<sup>^^</sup> 027923 R22 CL # 066204 R22 CL<sup>^^</sup> 066243 R22 CL<sup>^^</sup> Nurse 1 027541 R21 CL<sup>^^</sup> LPN 027415 R17 CL<sup>^</sup> 027416 R17 CL<sup>^^</sup> 027420 R17 CL<sup>^^</sup> 027543 R17 CL # 027546 R17 CL<sup>^^</sup> 027547 R17 CL<sup>^^</sup> 027576 R17 CL<sup>^</sup> 027577 R17 CL<sup>^</sup> 027581 R17 CL<sup>^^</sup> 027921 R17 CL<sup>^^</sup> 027922 R17 CL # 027955 R17 CL<sup>^^</sup> 066194 R17 CL<sup>^^</sup> 066222 R17 CL<sup>^^</sup></p>	<p><b>Nurse 2</b> 027580 R22 CL<sup>^</sup> 066205 R22 CL<sup>^</sup>  <b>Certified Nurse Aide 2</b> 027435 R12 CL<sup>^</sup> 027421 R12 CL<sup>^^</sup> 027425 R12 CL<sup>^^</sup> 027554 R12 CL<sup>^^</sup> 027586 R12 CL<sup>^^</sup>  <b>ALA/CNA I Certified Nurse Aide 1</b> 027139 R11 CL<sup>^^</sup> 027165 R11 CL<sup>^^</sup> 027214 R11 CL<sup>^^</sup> 027302 R11 CL<sup>^^</sup> 027405 R11 CL<sup>^^</sup> 027411 R11 CL<sup>^^</sup> 027419 R11 CL<sup>^^</sup> 027422 R11 CL<sup>^^</sup> 027423 R11 CL<sup>^^</sup> 027424 R11 CL<sup>^^</sup></p>	<p><b>ALA/CNA I cont. Certified Nurse Aide 1</b> 027427 R11 CL<sup>^^</sup> 027428 R11 CL<sup>^^</sup> 027429 R11 CL<sup>^</sup> 027431 R11 CL<sup>^^</sup> 027432 R11 CL<sup>^^</sup> 027433 R11 CL<sup>^</sup> 027434 R11 CL<sup>^^</sup> 027436 R11 CL<sup>^</sup> 027437 R11 CL<sup>^^</sup> 027438 R11 CL<sup>^^</sup> 027439 R11 CL<sup>^^</sup> 027443 R11 CL<sup>^^</sup> 027452 R11 CL<sup>^</sup> 027455 R11 CL<sup>^^</sup> 027456 R11 CL<sup>^^</sup> 027462 R11 CL<sup>^</sup> 027463 R11 CL<sup>^^</sup> 027464 R11 CL<sup>^^</sup> 027467 R11 CL<sup>^</sup> 027470 R11 CL<sup>^^</sup> 027477 R11 CL<sup>^^</sup> 027478 R11 CL<sup>^</sup> 027484 R11 CL<sup>^^</sup> 027486 R11 CL<sup>^</sup></p>	<p><b>ALA/CNA I cont. Certified Nurse Aide 1</b> 027487 R11 CL<sup>^^</sup> 027488 R11 CL<sup>^^</sup> 027496 R11 CL<sup>^^</sup> 027499 R11 CL<sup>^</sup> 027542 R11 CL<sup>^^</sup> 027548 R11 CL<sup>^</sup> 027549 R11 CL<sup>^^</sup> 027550 R11 CL<sup>^^</sup> 027551 R11 CL<sup>^^</sup> 027552 R11 CL<sup>^</sup> 027553 R11 CL<sup>^^</sup> 027555 R11 CL<sup>^^</sup> 027556 R11 CL<sup>^^</sup> 027557 R11 CL<sup>^^</sup> 027573 R11 CL<sup>^^</sup> 027579 R11 CL<sup>^</sup> 027582 R11 CL<sup>^^</sup> 027583 R11 CL<sup>^^</sup> 027584 R11 CL<sup>^^</sup> 027585 R11 CL<sup>^^</sup> 027587 R11 CL<sup>^^</sup> 027588 R11 CL<sup>^^</sup> 027589 R11 CL<sup>^^</sup></p>	<p><b>ALA/CNA I cont. Certified Nurse Aide 1</b> 027590 R11 CL<sup>^^</sup> 027591 R11 CL<sup>^^</sup> 027592 R11 CL<sup>^</sup> 027593 R11 CL<sup>^^</sup> 027594 R11 CL<sup>^^</sup> 027614 R11 CL<sup>^^</sup> 027632 R11 CL<sup>^</sup> 027835 R11 CL<sup>^</sup> 027840 R11 CL<sup>^^</sup> 027919 R11 CL<sup>^^</sup> 027924 R11 CL<sup>^</sup> 027925 R11 CL<sup>^</sup> 027953 R11 CL<sup>^</sup> 027956 R11 CL<sup>^^</sup> 066079 R11 CL<sup>^^</sup> 066120 R11 CL<sup>^^</sup> 066129 R11 CL<sup>^^</sup> 066161 R11 CL<sup>^^</sup> 066200 R11 CL<sup>^^</sup> 066201 R11 CL<sup>^^</sup> 066207 R11 CL<sup>^</sup> 066224 R11 CL<sup>^^</sup></p>	<p><b>On-Call Nurse 2 #</b> 06N21223 R22 CL</p> <p><b>On-Call LPN #</b> 06N09021 R17 CL</p> <p><b>On-Call Certified Nurse Aide 1 #</b> 06N09020 R11 CL</p> <p><b>On-Call Assisted Living Aide #</b> 06N21293 R09 CL</p>
------------------------------------------------------------------------------------------------------------------------------------------------------------------------------------------------------------------------------------------------------------------------------------------------------------------------------------------------------------------------------------------------------------------------------------------------------------------------------------------------------------------------------------------------------------------------------------------------------------------------------------------------------------------------------	-----------------------------------------------------------------------------------------------------------------------------------------------------------------------------------------------------------------------------------------------------------------------------------------------------------------------------------------------------------------------------------------------------------------------------------------------------------------------------------------------------------------------------------------------------------------------------------------------------------------------------------------------------------	----------------------------------------------------------------------------------------------------------------------------------------------------------------------------------------------------------------------------------------------------------------------------------------------------------------------------------------------------------------------------------------------------------------------------------------------------------------------------------------------------------------------------------------------------------------------------------------------------------------------------------------------------------------------------------------------------------------------------------------------------------------------------------------------------------------------	-------------------------------------------------------------------------------------------------------------------------------------------------------------------------------------------------------------------------------------------------------------------------------------------------------------------------------------------------------------------------------------------------------------------------------------------------------------------------------------------------------------------------------------------------------------------------------------------------------------------------------------------------------------------------------------------------------------------------------------------------------------------------------------------	---------------------------------------------------------------------------------------------------------------------------------------------------------------------------------------------------------------------------------------------------------------------------------------------------------------------------------------------------------------------------------------------------------------------------------------------------------------------------------------------------------------------------------------------------------------------------------------------------------------------------------------------------------------------------------------------------------------------------------------------------------	-----------------------------------------------------------------------------------------------------------------------------------------------------------------------------------------------------------------------------------------

PCN Count  
Total: 137  
FT: 130  
NP: 4  
PT: 3

Bed Count: 168  
All positions located in Anchorage unless otherwise noted

\*\*\* Reports to ALCC 066203  
^ Reports to Nurse 3 027418  
^^ Reports to Nurse 3 027362  
^^^ Reports to Nurse 3 027417  
# Reports to Assistant Administrator 027314

**Department of Family and Community Services**

**Division of Alaska Pioneer Homes  
Alaska Veterans and Pioneers Home  
Pioneer Homes Component**

PAGE

4 OF 9

REVISED

10/24/2022

PA/Advanced  
Practice RN 2  
02-7807 R24CL  
Palmer

PIONEERS HOME  
ADMINISTRATOR  
027007 R23 PX

Nurse 3  
067019 R24 CL

Staff Assigned As  
Required  
(See Below)

Nurse 3  
027310 R24 CL

Staff Assigned As  
Required  
(See Below)

Nurse 3  
027394 R24 CL

Staff Assigned As  
Required  
(See Below)

Recreation Therapist 2  
027338 R16 CL

Assisted Living Aide  
06N15002 R09 CL

Assisted Living Aide  
027340 R09 CL  
027312 R09 CL  
027336 R09 CL  
027383 R09 CL  
ALA/CNA I

Maintenance  
Generalist Foreman  
027343 R52 CL

Maintenance  
Generalist Journey  
027346 R54 CL  
066220 R54 CL

Protective Services  
Specialist 3  
027341 R19 CL

Administrative  
Assistant 3  
027303 R15 CL

Supply Technician 2  
027396 R12 CL

Medical Information  
Services Assistant  
027909 R10 CL

Assisted Living Aide  
027321 R09 CL  
ALA/CNA I

Certified Nurse Aide 2  
027121 R12 CL

**ALA/CNA 1**  
**Certified**

**Nurse Aide 1**  
027322 R11 CL  
027304 R11 CL\*  
027305 R11 CL\*  
027307 R11 CL\*  
027309 R11 CL\*  
027313 R11 CL\*  
027317 R11 CL\*  
027319 R11 CL\*  
027320 R11 CL\*  
027323 R11 CL\*  
027325 R11 CL\*  
027326 R11 CL\*  
027327 R11 CL\*  
027328 R11 CL\*  
027329 R11 CL\*\*  
027330 R11 CL\*\*  
027332 R11 CL\*\*  
027333 R11 CL\*\*  
027334 R11 CL\*\*  
027335 R11 CL\*\*

**ALA/CNA 1 cont.**  
**Certified**

**Nurse Aide 1**  
027350 R11 CL  
027339 R11 CL\*\*  
027351 R11 CL\*\*  
027352 R11 CL\*\*  
027356 R11 CL\*\*  
027359 R11 CL\*\*  
027375 R11 CL\*\*  
027391 R11 CL\*\*  
027392 R11 CL\*\*  
027393 R11 CL\*\*  
027398 R11 CL\*\*  
027399 R11 CL\*\*  
027907 R11 CL\*\*  
027908 R11 CL\*\*  
027918 R11 CL\*\*  
066213 R11 CL\*\*  
066214 R11 CL\*\*  
066235 R11 CL\*\*  
066236 R11 CL\*\*  
066237 R11 CL\*\*

**On-Call Nurse 2\*\*\***  
06N09086 R22 CL

**On-Call Nurse 1\*\*\***  
06N22018 R21 CL

**On-Call LPN\*\*\***  
06N15001 R17 CL

**On-Call Certified  
Nurse Aide 1\*\*\***  
06N09087 R11 CL

**LPN/NURSE 1/2 \***

**Nurse 2**  
027308 R22 CL  
027342 R22 CL  
027369 R22 CL  
027390 R22 CL  
027824 R22 CL  
027958 R22 CL  
066211 R22 CL  
066212 R22 CL  
**LPN**  
027306 R17 CL  
027318 R17 CL  
027397 R17 CL

PCN Count  
Total: 74  
FT: 64  
NP: 5  
PT: 5

Bed Count: 79

All positions located in Palmer unless otherwise noted

\* Reports to Nurse 3 02-7394  
\*\* Reports to Nurse 3 02-7310  
\*\*\* Reports to Nurse 3 06-7019

**Department of Family and Community Services**

**Division of Alaska Pioneer Homes**

**Fairbanks Pioneer Home**

**Pioneer Homes Component**

PAGE

5 OF 9

REVISED

10/28/2022

**PIONEERS HOME  
ADMINISTRATOR  
027200 R23 PX**

**Assistant Administrator  
027946 R21 CL**

**Maintenance  
Generalist Foreman  
027251 R52 CL**

**Protective Services  
Specialist 3  
027226 R19 CL**

**Administrative  
Assistant 3  
027202 R15 CL**

**Nurse 3  
027213 R24 CL**

**Certified Nurse Aide 2  
027137 R12 CL  
066192 R12 CL  
066196 R12 CL**

**Staff Assigned As Required  
(See Below)**

**Maintenance  
Generalist Journey  
027256 R54 CL  
027265 R54 CL  
027290 R54 CL**

**Protective Services  
Specialist 1  
027207 R15 CL**

**Supply Technician 2  
027204 R12 CL**

**Certified Nurse Aide 1  
027230 R11 CL**

**Assisted Living Aide  
027247 R09 CL  
027941 R09 CL  
ALA/CNA 1**

**Administrative  
Assistant 1  
027284 R10 CL**

**LPN/Nurse 1/2 \***

**Nurse 2**  
027211 R22 CL  
027212 R22 CL  
027216 R22 CL  
027218 R22 CL  
027223 R22 CL  
027227 R22 CL  
027245 R22 CL  
**LPN**  
027217 R17 CL  
027221 R17 CL  
027228 R17 CL

**ALA/CNA 1 cont \***

**Certified  
Nurse Aide 1**  
027109 R11 CL  
027126 R11 CL  
027201 R11 CL  
027203 R11 CL  
027205 R11 CL  
027209 R11 CL  
027210 R11 CL  
027215 R11 CL  
027219 R11 CL  
027222 R11 CL  
027224 R11 CL  
027225 R11 CL  
027229 R11 CL  
027231 R11 CL  
027234 R11 CL  
027235 R11 CL  
027237 R11 CL  
027238 R11 CL  
027240 R11 CL

**ALA/CNA 1 cont \***

**Certified  
Nurse Aide 1**  
027241 R11 CL  
027246 R11 CL  
027249 R11 CL  
027252 R11 CL  
027270 R11 CL  
027276 R11 CL  
027298 R11 CL  
027932 R11 CL  
027933 R11 CL  
027935 R11 CL  
027936 R11 CL  
027937 R11 CL  
066040 R11 CL  
066195 R11 CL  
066199 R11 CL  
066241 R11 CL  
066242 R11 CL

**On-Call Nurse 2  
06N09045 R22 CL\***

**On-call LPN  
06N09044 R17 CL\***

**On-Call Certified  
Nurse Aide 1  
06N09043 R11 CL\***

**On-Call Assisted  
Living Aide  
06N21295 R09 CL\***

**ALA/CNA 1 \***

**Assisted  
Living Aide**  
027208 R09 CL  
027220 R09 CL  
027233 R09 CL  
027236 R09 CL  
027931 R09 CL  
066147 R09 CL

**PCN Count**  
Total: 74  
FT: 69  
NP: 4  
PT: 1

**Bed Count: 91**

All positions located in Fairbanks unless otherwise noted

\* Reports to Assistant Administrator 02-7946

**Department of Family and Community Services**

**Division of Alaska Pioneer Homes**

**Juneau Pioneer Home**

**Pioneer Homes Component**

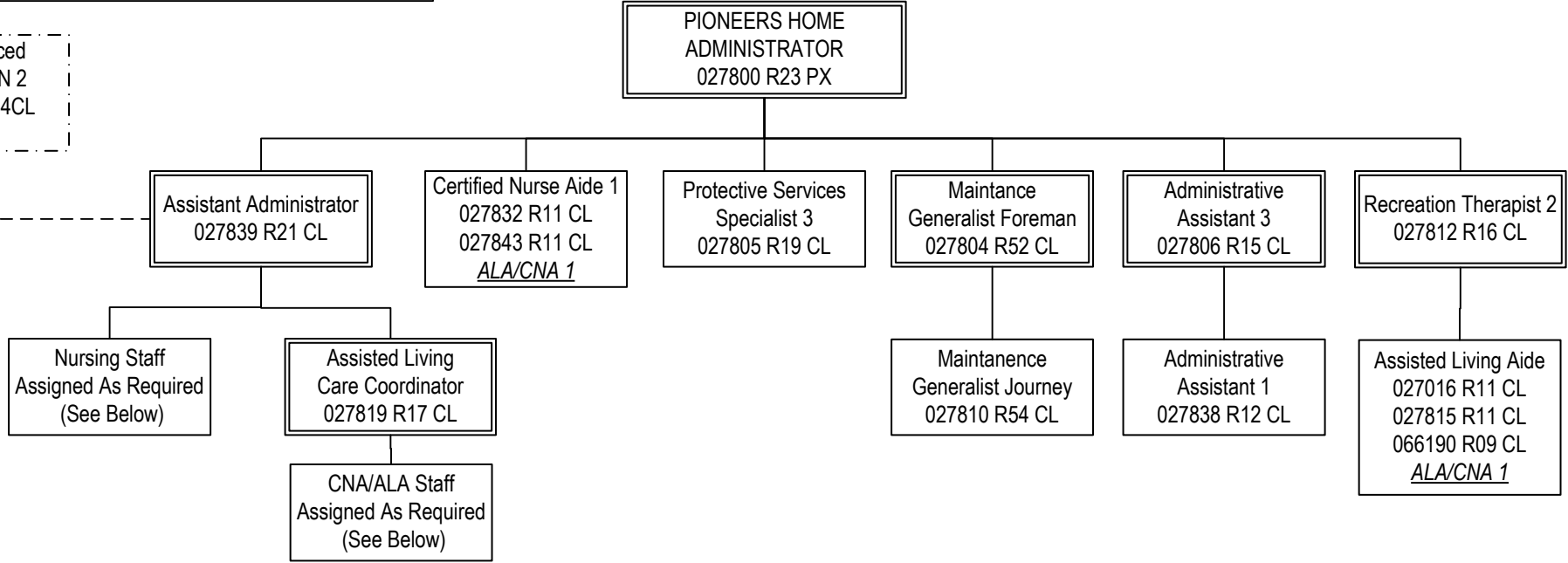
PAGE

6 OF 9

REVISED

10/28/2022

PA/Advanced  
Practice RN 2  
02-7807 R24CL  
Palmer



**Nurse 3 \***  
027816 R24 CL  
027818 R24 CL

**LPN/Nurse 1/2 \*\***  
LPN  
027817 R17 CL  
027820 R17 CL  
027823 R17 CL  
066188 R17 CL  
066232 R17 CL

**ALA/CNA 1 \*\*\***  
**Certified Nurse Aide 1**  
027244 R11 CL  
027801 R11 CL  
027802 R09 CL  
027803 R11 CL  
027814 R11 CL  
027821 R11 CL  
027826 R11 CL  
027827 R11 CL  
027828 R11 CL  
027829 R11 CL  
027830 R11 CL  
027831 R11 CL  
027833 R11 CL

**ALA/CNA 1 cont. \*\*\***  
**Certified Nurse Aide 1**  
027834 R11 CL  
027841 R11 CL  
027842 R11 CL  
027904 R11 CL  
066189 R11 CL  
066223 R11 CL  
066225 R11 CL  
**Assisted Living Aide**  
027813 R09 CL  
027822 R09 CL  
027825 R09 CL  
027836 R09 CL

**On-Call Nurse 3 \*\***  
06N20007 R24 CL

**On-Call Nurse 1 \*\***  
06N20006 R21 CL

**On-Call LPN \***  
06N20005 R17 CL

**On-Call Certified Nurse Aide 1 \*\*\***  
06N09018 R11 CL

**On-Call Assisted Living Aide \*\*\***  
06N18007 R09 CL

PCN Count  
Total: 50  
FT: 44  
NP: 5  
PT: 1

Bed Count: 49  
All positions located in Juneau unless otherwise noted

\* Reports to Assistant Administrator 027839  
\*\* Reports to Nurse 3 027816  
\*\*\* Reports to ALCC 027819

**Department of Family and Community Services**

**Division of Alaska Pioneer Homes**

**Ketchikan Pioneer Home**

**Pioneer Homes Component**

PAGE

7 OF 9

REVISED

10/31/2022

PIONEERS HOME  
ADMINISTRATOR  
027600 R23 PX

PA/Advanced  
Practice RN 2  
02-7807 R24CL  
Palmer

Assistant Administrator  
027611 R21 CL

Maintenance Generalist  
Foreman  
027635 R52 CL

Protective Services  
Specialist 3  
027623 R19 CL

Administrative Assistant 3  
027670 R15 CL

Nurse 3  
027610 R24 CL

Assisted Living Care  
Coordinator  
066239 R17 CL

Staff Assigned As Required  
(See Below)

Maintenance Generalist  
Journey  
027638 R54 CL

Protective Services  
Specialist 1  
027631 R15 CL

Administrative Assistant 1  
027602 R12 CL

Staff Assigned As Required  
(See Below)

Certified Nurse Aide 2  
027621 R12 CL  
027630 R12 CL  
027669 R12 CL

Staff Assigned As Required  
(See Below)

Certified Nurse Aide 1  
027612 R11 CL  
027624 R11 CL  
ALA/CNA

Nurse 1/2 \*  
Nurse 2  
066240 R22 CL

LPN/Nurse 1/2 \*  
Nurse 2  
027605 R22 CL  
027607 R22 CL

LPN  
027926 R17 CL

ALA/CNA 1 \*  
Certified  
Nurse Aide 1  
027119 R11 CL  
027170 R11 CL  
027601 R11CL  
027603 R11 CL  
027606 R11 CL  
027608 R09 CL  
027609 R11 CL  
027613 R11 CL  
027615 R11 CL  
027616 R11 CL  
027617 R11 CL  
027618 R11 CL  
027619 R11 CL

ALA/CNA 1 cont \*  
Certified  
Nurse Aide 1  
027620 R11 CL  
027633 R11 CL  
027634 R11 CL  
027648 R11 CL  
027671 R11 CL  
027943 R11 CL  
027945 R11 CL  
066206 R11 CL  
066238 R11 CL  
069504 R11 CL

Assisted  
Living Aide  
027944 R09 CL

On-Call Nurse 2 \*  
06N09005 R22 CL

On-Call Nurse 1 \*  
06N09004 R21 CL

On-Call LPN \*  
06N09003 R17 CL

On-Call Certified  
Nurse Aide 1 \*  
06N09002 R11 CL

On-Call Assisted  
Living Aide \*  
06N18029 R09 CL

PCN Count  
Total: 48  
FT: 42  
NP: 5  
PT: 1

Bed Count: 45

All positions located in Ketchikan unless otherwise noted

\* Reports to Assistant Administrator 02-7611  
(staff are assigned to the different  
neighborhoods with the Nurse 3, ALCC and  
CNA2's as the leads in those neighborhoods)

**Department of Family and Community Services**

**Division of Alaska Pioneer Homes**

**Sitka Pioneer Home**

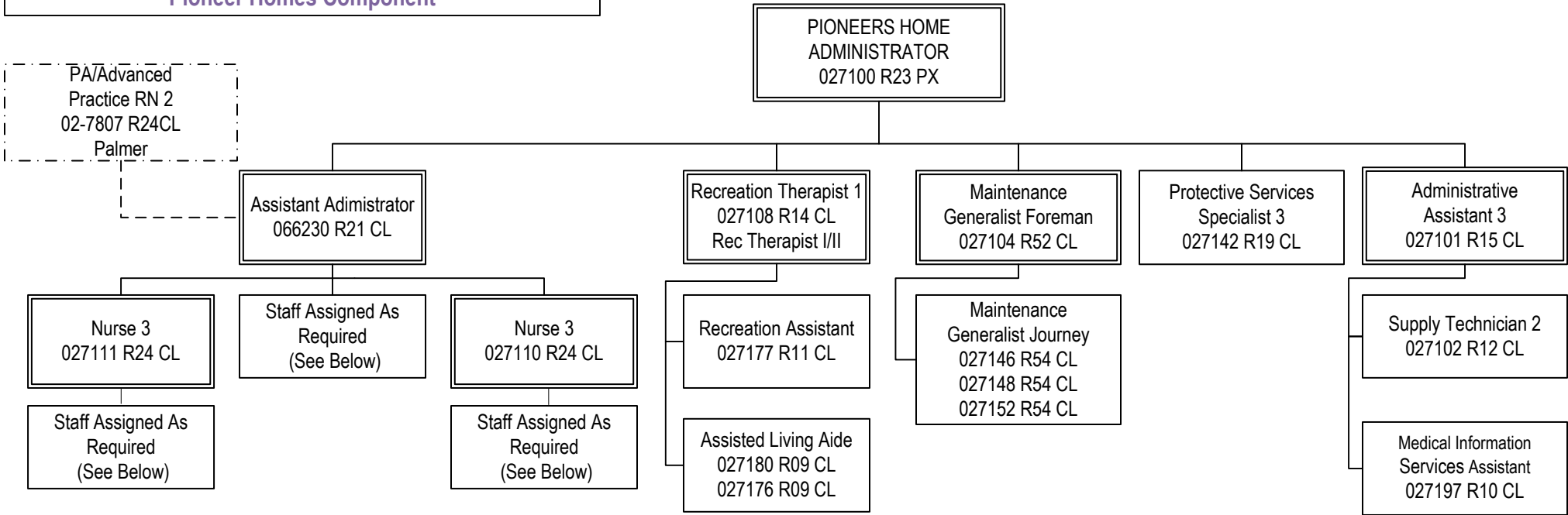
**Pioneer Homes Component**

PAGE

8 OF 9

REVISED

10/31/2022



**LPN/Nurse 1/2 \***  
**Nurse 2**  
027106 R22 CL  
027112 R22 CL  
027114 R22 CL  
027118 R22 CL  
066226 R22 CL  
**LPN**  
027117 R17 CL  
027158 R17 CL

**Certified Nurse Aide 2 \***  
02-7105 R12 CL

**Assisted Living Aide (non-M.C.)\*\*\***  
027951 R09 CL

**ALA / CNA 1 Certified**  
**Nurse Aide 1**  
027120 R11 CL\*\*  
027122 R11 CL\*\*  
027124 R11 CL\*\*  
027125 R11 CL\*\*  
027127 R11 CL\*\*  
027128 R11 CL\*\*  
027129 R11 CL\*\*  
027130 R11 CL\*\*  
027131 R11 CL\*\*  
027132 R11 CL\*\*  
027133 R11 CL\*\*  
027134 R11 CL\*\*  
027135 R11 CL\*\*  
027136 R11 CL\*\*  
027138 R11 CL\*\*  
027140 R11 CL\*\*  
027141 R11 CL\*\*  
027143 R11 CL\*\*

**ALA/CNA 1 cont. Certified**  
**Nurse Aide 1**  
027144 R11 CL\*\*\*  
027159 R11 CL\*\*\*  
027164 R11 CL\*\*\*  
027178 R11 CL\*\*\*  
027901 R11 CL\*\*\*  
027903 R11 CL\*\*\*  
027905 R11 CL\*\*\*  
027912 R11 CL\*\*\*  
027913 R11 CL\*\*\*  
027950 R11 CL\*\*\*  
066210 R11 CL\*\*\*  
066228 R11 CL\*\*\*  
**Assisted Living Aide**  
027934 R09 CL\*\*\*  
027949 R09 CL\*\*\*  
066217 R09 CL\*\*\*

**On-Call Nurse 2 \***  
06N09033 R22CL

**On-Call LPN \***  
06N21383 R17 CL

**On-Call CNA 1 \*\*\***  
06N09031 R11 CL

**On-call ALA \*\*\***  
06N21294 R09 CL

**PCN Count**  
**Total: 62**  
**FT: 57**  
**NP:4**  
**PT: 1**

**Bed Count: 65**  
All positions located in Sitka unless otherwise noted

\* Reports to Assistant Administrator 06-6230  
\*\* Reports to Nurse 3 02-7111  
\*\*\* Reports to Nurse 02-7110



**Department of Family and Community Services**

**Division of Alaska Pioneer Homes**

**Pharmacy**

PAGE

9 OF 9

REVISED

10/24/2022

Pharmacist  
Lead  
06X114 R27 CL

Pharmacist  
06X113 R27 CL

Accounting Tech. III  
027574 R16 CL

Nationally Certified  
Pharmacy Tech  
066208 R12 CL

Pharmacy Tech.  
027480 R12 CL  
027917 R12 CL

PCN Count

Total: 6

FT: 6

NP: 0

PT: 0

All positions located in Anchorage unless otherwise noted