

Department of Family and Community Services

Division of Alaska Pioneer Homes

Anchorage Pioneer Home

Pioneer Homes Component

PAGE

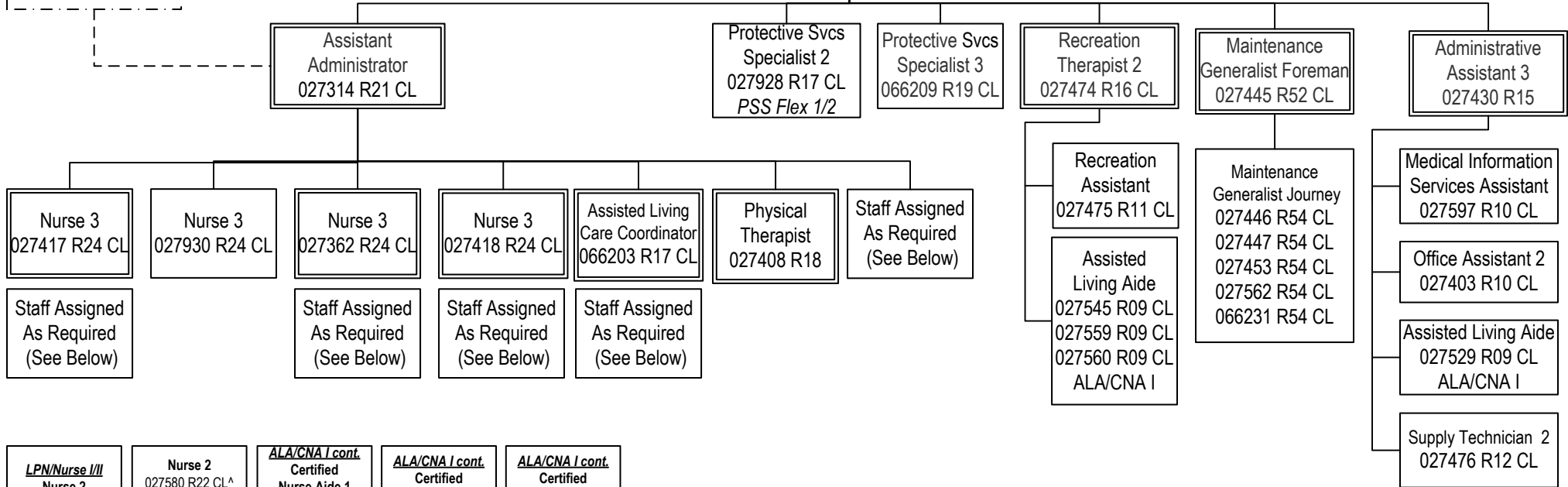
3 OF 9

REVISED

10/28/2022

PA/Advanced
Practice RN 2
02-7807 R24CL
Palmer

PIONEERS HOME
ADMINISTRATOR
027540 R23 PX



<p>LPN/Nurse III Nurse 2 027357 R22 CL # 027413 R22 CL # 027489 R22 CL^{^^} 027923 R22 CL # 066204 R22 CL^{^^} 066243 R22 CL^{^^} Nurse 1 027541 R21 CL^{^^} LPN 027415 R17 CL[^] 027416 R17 CL^{^^} 027420 R17 CL^{^^} 027543 R17 CL # 027546 R17 CL^{^^} 027547 R17 CL^{^^} 027576 R17 CL[^] 027577 R17 CL[^] 027581 R17 CL^{^^} 027921 R17 CL^{^^} 027922 R17 CL # 027955 R17 CL^{^^} 066194 R17 CL^{^^} 066222 R17 CL^{^^}</p>	<p>Nurse 2 027580 R22 CL[^] 066205 R22 CL[^] Certified Nurse Aide 2 027435 R12 CL[^] 027421 R12 CL^{^^} 027425 R12 CL^{^^} 027554 R12 CL^{^^} 027586 R12 CL^{^^} ALA/CNA I Certified Nurse Aide 1 027139 R11 CL^{^^} 027165 R11 CL^{^^} 027214 R11 CL^{^^} 027302 R11 CL^{^^} 027405 R11 CL^{^^} 027411 R11 CL^{^^} 027419 R11 CL^{^^} 027422 R11 CL^{^^} 027423 R11 CL^{^^} 027424 R11 CL^{^^}</p>	<p>ALA/CNA I cont. Certified Nurse Aide 1 027427 R11 CL^{^^} 027428 R11 CL^{^^} 027429 R11 CL[^] 027431 R11 CL^{^^} 027432 R11 CL^{^^} 027433 R11 CL[^] 027434 R11 CL^{^^} 027436 R11 CL[^] 027437 R11 CL^{^^} 027438 R11 CL^{^^} 027439 R11 CL^{^^} 027443 R11 CL^{^^} 027452 R11 CL[^] 027455 R11 CL^{^^} 027456 R11 CL^{^^} 027462 R11 CL[^] 027463 R11 CL^{^^} 027464 R11 CL^{^^} 027467 R11 CL[^] 027470 R11 CL^{^^} 027477 R11 CL^{^^} 027478 R11 CL[^] 027484 R11 CL^{^^} 027486 R11 CL[^]</p>	<p>ALA/CNA I cont. Certified Nurse Aide 1 027487 R11 CL^{^^} 027488 R11 CL^{^^} 027496 R11 CL^{^^} 027499 R11 CL[^] 027542 R11 CL^{^^} 027548 R11 CL[^] 027549 R11 CL^{^^} 027550 R11 CL^{^^} 027551 R11 CL^{^^} 027552 R11 CL[^] 027553 R11 CL^{^^} 027555 R11 CL^{^^} 027556 R11 CL^{^^} 027557 R11 CL^{^^} 027573 R11 CL^{^^} 027579 R11 CL[^] 027582 R11 CL^{^^} 027583 R11 CL^{^^} 027584 R11 CL^{^^} 027585 R11 CL^{^^} 027587 R11 CL^{^^} 027588 R11 CL^{^^} 027589 R11 CL^{^^}</p>	<p>ALA/CNA I cont. Certified Nurse Aide 1 027590 R11 CL^{^^} 027591 R11 CL^{^^} 027592 R11 CL[^] 027593 R11 CL^{^^} 027594 R11 CL^{^^} 027614 R11 CL^{^^} 027632 R11 CL 027835 R11 CL 027840 R11 CL^{^^} 027919 R11 CL^{^^} 027924 R11 CL[^] 027925 R11 CL[^] 027953 R11 CL 027956 R11 CL^{^^} 066079 R11 CL^{^^} 066120 R11 CL^{^^} 066129 R11 CL^{^^} 066161 R11 CL^{^^} 066200 R11 CL^{^^} 066201 R11 CL^{^^} 066207 R11 CL[^] 066224 R11 CL^{^^}</p>	<p>On-Call Nurse 2 # 06N2123 R22 CL On-Call LPN # 06N09021 R17 CL On-Call Certified Nurse Aide 1 # 06N09020 R11 CL On-Call Assisted Living Aide # 06N21293 R09 CL</p>
--	---	--	---	---	--

PCN Count
Total: 137
FT: 130
NP: 4
PT: 3

Bed Count: 168
All positions located in Anchorage unless otherwise noted

*** Reports to ALCC 066203
^ Reports to Nurse 3 027418
^^ Reports to Nurse 3 027362
^^^ Reports to Nurse 3 027417
Reports to Assistant Administrator 027314

Department of Family and Community Services

**Division of Alaska Pioneer Homes
Alaska Veterans and Pioneers Home
Pioneer Homes Component**

PAGE

4 OF 9

REVISED

10/24/2022

PA/Advanced
Practice RN 2
02-7807 R24CL
Palmer

PIONEERS HOME
ADMINISTRATOR
027007 R23 PX

Nurse 3
067019 R24 CL

Staff Assigned As
Required
(See Below)

Nurse 3
027310 R24 CL

Staff Assigned As
Required
(See Below)

Nurse 3
027394 R24 CL

Staff Assigned As
Required
(See Below)

Recreation Therapist 2
027338 R16 CL

Assisted Living Aide
06N15002 R09 CL

Assisted Living Aide
027340 R09 CL
027312 R09 CL
027336 R09 CL
027383 R09 CL
ALA/CNA I

Maintenance
Generalist Foreman
027343 R52 CL

Maintenance
Generalist Journey
027346 R54 CL
066220 R54 CL

Protective Services
Specialist 3
027341 R19 CL

Administrative
Assistant 3
027303 R15 CL

Supply Technician 2
027396 R12 CL

Medical Information
Services Assistant
027909 R10 CL

Assisted Living Aide
027321 R09 CL
ALA/CNA I

Certified Nurse Aide 2
027121 R12 CL

ALA/CNA 1
Certified

Nurse Aide 1
027322 R11 CL
027304 R11 CL*
027305 R11 CL*
027307 R11 CL*
027309 R11 CL*
027313 R11 CL*
027317 R11 CL*
027319 R11 CL*
027320 R11 CL*
027323 R11 CL*
027325 R11 CL*
027326 R11 CL*
027327 R11 CL*
027328 R11 CL*
027329 R11 CL**
027330 R11 CL**
027332 R11 CL**
027333 R11 CL**
027334 R11 CL**
027335 R11 CL**

ALA/CNA 1 cont.
Certified

Nurse Aide 1
027350 R11 CL
027339 R11 CL**
027351 R11 CL**
027352 R11 CL**
027356 R11 CL**
027359 R11 CL**
027375 R11 CL**
027391 R11 CL**
027392 R11 CL**
027393 R11 CL**
027398 R11 CL**
027399 R11 CL**
027907 R11 CL**
027908 R11 CL**
027918 R11 CL**
066213 R11 CL**
066214 R11 CL**
066235 R11 CL**
066236 R11 CL**
066237 R11 CL**

On-Call Nurse 2***
06N09086 R22 CL

On-Call Nurse 1***
06N22018 R21 CL

On-Call LPN***
06N15001 R17 CL

**On-Call Certified
Nurse Aide 1*****
06N09087 R11 CL

LPN/NURSE 1/2 *

Nurse 2
027308 R22 CL
027342 R22 CL
027369 R22 CL
027390 R22 CL
027824 R22 CL
027958 R22 CL
066211 R22 CL
066212 R22 CL
LPN
027306 R17 CL
027318 R17 CL
027397 R17 CL

PCN Count
Total: 74
FT: 64
NP: 5
PT: 5

Bed Count: 79

All positions located in Palmer unless otherwise noted

* Reports to Nurse 3 02-7394
** Reports to Nurse 3 02-7310
*** Reports to Nurse 3 06-7019

Department of Family and Community Services

Division of Alaska Pioneer Homes

Fairbanks Pioneer Home

Pioneer Homes Component

**PIONEERS HOME
ADMINISTRATOR
027200 R23 PX**

PA/Advanced
Practice RN 2
02-7807 R24CL
Palmer

**Assistant Administrator
027946 R21 CL**

**Maintenance
Generalist Foreman
027251 R52 CL**

**Protective Services
Specialist 3
027226 R19 CL**

**Administrative
Assistant 3
027202 R15 CL**

**Nurse 3
027213 R24 CL**

**Certified Nurse Aide 2
027137 R12 CL
066192 R12 CL
066196 R12 CL**

**Staff Assigned As Required
(See Below)**

**Maintenance
Generalist Journey
027256 R54 CL
027265 R54 CL
027290 R54 CL**

**Protective Services
Specialist 1
027207 R15 CL**

**Supply Technician 2
027204 R12 CL**

**Certified Nurse Aide 1
027230 R11 CL**

**Assisted Living Aide
027247 R09 CL
027941 R09 CL
ALA/CNA 1**

**Administrative
Assistant 1
027284 R10 CL**

LPN/Nurse 1/2 *

Nurse 2

027211 R22 CL
027212 R22 CL
027216 R22 CL
027218 R22 CL
027223 R22 CL
027227 R22 CL
027245 R22 CL
LPN
027217 R17 CL
027221 R17 CL
027228 R17 CL

ALA/CNA 1 *

**Assisted
Living Aide**

027208 R09 CL
027220 R09 CL
027233 R09 CL
027236 R09 CL
027931 R09 CL
066147 R09 CL

ALA/CNA 1 cont *

Certified

Nurse Aide 1

027109 R11 CL
027126 R11 CL
027201 R11 CL
027203 R11 CL
027205 R11 CL
027209 R11 CL
027210 R11 CL
027215 R11 CL
027219 R11 CL
027222 R11 CL
027224 R11 CL
027225 R11 CL
027229 R11 CL
027231 R11 CL
027234 R11 CL
027235 R11 CL
027237 R11 CL
027238 R11 CL
027240 R11 CL

ALA/CNA 1 cont *

Certified

Nurse Aide 1

027241 R11 CL
027246 R11 CL
027249 R11 CL
027252 R11 CL
027270 R11 CL
027276 R11 CL
027298 R11 CL
027932 R11 CL
027933 R11 CL
027935 R11 CL
027936 R11 CL
027937 R11 CL
066040 R11 CL
066195 R11 CL
066199 R11 CL
066241 R11 CL
066242 R11 CL

**On-Call Nurse 2
06N09045 R22 CL***

**On-call LPN
06N09044 R17 CL***

**On-Call Certified
Nurse Aide 1
06N09043 R11 CL***

**On-Call Assisted
Living Aide
06N21295 R09 CL***

PCN Count

Total: 74

FT: 69

NP: 4

PT: 1

Bed Count: 91

All positions located in Fairbanks unless otherwise noted

* Reports to Assistant Administrator 02-7946

Department of Family and Community Services

Division of Alaska Pioneer Homes

Juneau Pioneer Home

Pioneer Homes Component

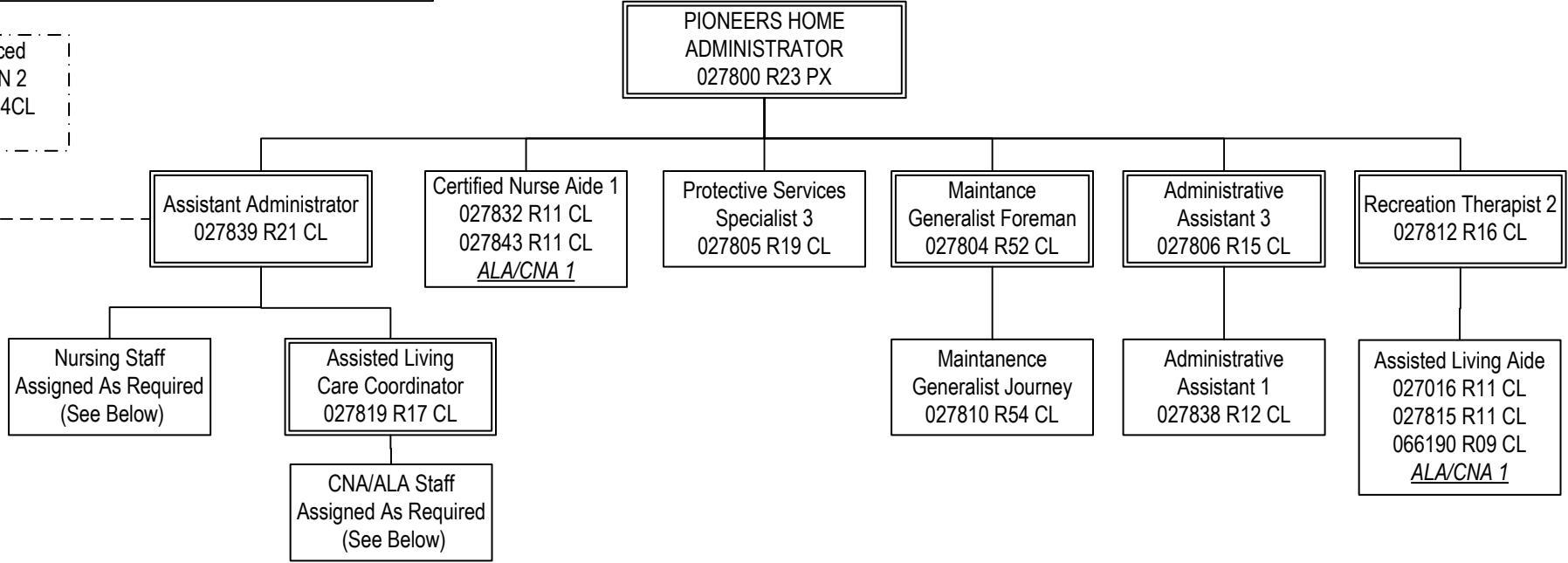
PAGE

6 OF 9

REVISED

10/28/2022

PA/Advanced
Practice RN 2
02-7807 R24CL
Palmer



Nurse 3 *
027816 R24 CL
027818 R24 CL

LPN/Nurse 1/2 **
LPN
027817 R17 CL
027820 R17 CL
027823 R17 CL
066188 R17 CL
066232 R17 CL

ALA/CNA 1 ***
Certified Nurse Aide 1
027244 R11 CL
027801 R11 CL
027802 R09 CL
027803 R11 CL
027814 R11 CL
027821 R11 CL
027826 R11 CL
027827 R11 CL
027828 R11 CL
027829 R11 CL
027830 R11 CL
027831 R11 CL
027833 R11 CL

ALA/CNA 1 cont. ***
Certified Nurse Aide 1
027834 R11 CL
027841 R11 CL
027842 R11 CL
027904 R11 CL
066189 R11 CL
066223 R11 CL
066225 R11 CL
Assisted Living Aide
027813 R09 CL
027822 R09 CL
027825 R09 CL
027836 R09 CL

On-Call Nurse 3 **
06N20007 R24 CL

On-Call Nurse 1 **
06N20006 R21 CL

On-Call LPN *
06N20005 R17 CL

On-Call Certified Nurse Aide 1 ***
06N09018 R11 CL

On-Call Assisted Living Aide ***
06N18007 R09 CL

PCN Count
Total: 50
FT: 44
NP: 5
PT: 1

Bed Count: 49
All positions located in Juneau unless otherwise noted

* Reports to Assistant Administrator 027839
** Reports to Nurse 3 027816
*** Reports to ALCC 027819

Department of Family and Community Services

Division of Alaska Pioneer Homes

Ketchikan Pioneer Home

Pioneer Homes Component

PAGE

7 OF 9

REVISED

10/31/2022

**PIONEERS HOME
ADMINISTRATOR
027600 R23 PX**

PA/Advanced
Practice RN 2
02-7807 R24CL
Palmer

**Assistant Administrator
027611 R21 CL**

**Maintenance Generalist
Foreman
027635 R52 CL**

**Protective Services
Specialist 3
027623 R19 CL**

**Administrative Assistant 3
027670 R15 CL**

**Nurse 3
027610 R24 CL**

**Assisted Living Care
Coordinator
066239 R17 CL**

**Staff Assigned As Required
(See Below)**

**Maintenance Generalist
Journey
027638 R54 CL**

**Protective Services
Specialist 1
027631 R15 CL**

**Administrative Assistant 1
027602 R12 CL**

**Staff Assigned As Required
(See Below)**

**Certified Nurse Aide 2
027621 R12 CL
027630 R12 CL
027669 R12 CL**

**Staff Assigned As Required
(See Below)**

**Certified Nurse Aide 1
027612 R11 CL
027624 R11 CL
ALA/CNA**

**Nurse 1/2 *
Nurse 2
066240 R22 CL**

**LPN/Nurse 1/2 *
Nurse 2
027605 R22 CL
027607 R22 CL**

**LPN
027926 R17 CL**

**ALA/CNA 1 *
Certified
Nurse Aide 1
027119 R11 CL
027170 R11 CL
027601 R11CL
027603 R11 CL
027606 R11 CL
027608 R09 CL
027609 R11 CL
027613 R11 CL
027615 R11 CL
027616 R11 CL
027617 R11 CL
027618 R11 CL
027619 R11 CL**

**ALA/CNA 1 cont *
Certified
Nurse Aide 1
027620 R11 CL
027633 R11 CL
027634 R11 CL
027648 R11 CL
027671 R11 CL
027943 R11 CL
027945 R11 CL
066206 R11 CL
066238 R11 CL
069504 R11 CL**

**Assisted
Living Aide
027944 R09 CL**

**On-Call Nurse 2 *
06N09005 R22 CL**

**On-Call Nurse 1 *
06N09004 R21 CL**

**On-Call LPN *
06N09003 R17 CL**

**On-Call Certified
Nurse Aide 1 *
06N09002 R11 CL**

**On-Call Assisted
Living Aide *
06N18029 R09 CL**

**PCN Count
Total: 48
FT: 42
NP: 5
PT: 1**

Bed Count: 45

All positions located in Ketchikan unless otherwise noted

*** Reports to Assistant Administrator 02-7611
(staff are assigned to the different
neighborhoods with the Nurse 3, ALCC and
CNA2's as the leads in those neighborhoods)**

Department of Family and Community Services

Division of Alaska Pioneer Homes

Sitka Pioneer Home

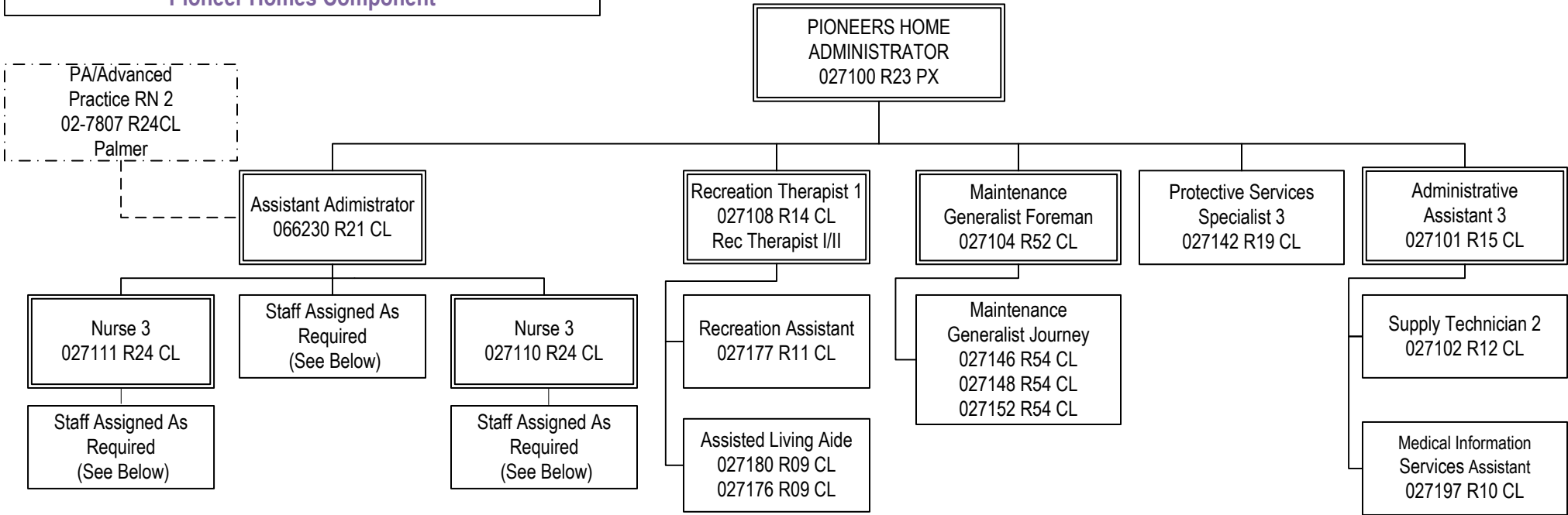
Pioneer Homes Component

PAGE

8 OF 9

REVISED

10/31/2022



LPN/Nurse 1/2 *
Nurse 2
027106 R22 CL
027112 R22 CL
027114 R22 CL
027118 R22 CL
066226 R22 CL
LPN
027117 R17 CL
027158 R17 CL

Certified Nurse Aide 2 *
02-7105 R12 CL

Assisted Living Aide (non-M.C.)***
027951 R09 CL

ALA / CNA 1 Certified
Nurse Aide 1
027120 R11 CL**
027122 R11 CL**
027124 R11 CL**
027125 R11 CL**
027127 R11 CL**
027128 R11 CL**
027129 R11 CL**
027130 R11 CL**
027131 R11 CL**
027132 R11 CL**
027133 R11 CL**
027134 R11 CL**
027135 R11 CL**
027136 R11 CL**
027138 R11 CL**
027140 R11 CL**
027141 R11 CL**
027143 R11 CL**

ALA/CNA 1 cont. Certified
Nurse Aide 1
027144 R11 CL***
027159 R11 CL***
027164 R11 CL***
027178 R11 CL***
027901 R11 CL***
027903 R11 CL***
027905 R11 CL***
027912 R11 CL***
027913 R11 CL***
027950 R11 CL***
066210 R11 CL***
066228 R11 CL***
Assisted Living Aide
027934 R09 CL***
027949 R09 CL***
066217 R09 CL***

On-Call Nurse 2 *
06N09033 R22CL

On-Call LPN *
06N21383 R17 CL

On-Call CNA 1 ***
06N09031 R11 CL

On-call ALA ***
06N21294 R09 CL

PCN Count
Total: 62
FT: 57
NP:4
PT: 1

Bed Count: 65
All positions located in Sitka unless otherwise noted

* Reports to Assistant Administrator 06-6230
** Reports to Nurse 3 02-7111
*** Reports to Nurse 02-7110

Department of Family and Community Services

Division of Alaska Pioneer Homes

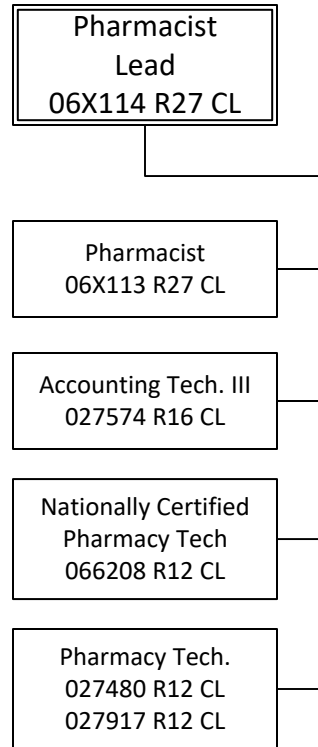
Pharmacy

PAGE

9 OF 9

REVISED

10/24/2022



PCN Count

Total: 6

FT: 6

NP: 0

PT: 0

All positions located in Anchorage unless otherwise noted