

# **State of Alaska FY2024 Governor's Operating Budget**

## **Department of Fish and Game Southeast Region Fisheries Management Component Budget Summary**

**Component: Southeast Region Fisheries Management**

**Contribution to Department's Mission**

The Southeast Region contributes to the department's mission by 1) ensuring the conservation of natural stocks of fish, shellfish, and aquatic plants based on scientifically sound management; 2) sustaining fisheries based on the control and regulation of harvests through responsive management systems; 3) maximizing fishery harvests and opportunities of fish, shellfish, and aquatic plants using the sustained yield principle; 4) expanding fishery potential through identification of underutilized species/stocks of fish, shellfish, and aquatic plants; 5) maintaining and enhancing opportunities for public participation in the development of fishery management plans and harvest regulations; 6) developing and maintaining comprehensive databases on commercial, subsistence, and personal use harvests, and associated processing of fish, shellfish, and aquatic plants; 7) promoting public education on the conservation, production, and economic and social benefits of sustained yields from fish, shellfish, and aquatic plants; and 8) providing data, expertise, and written and oral comment in the public regulatory process through the Alaska Board of Fisheries (BOF).

**Core Services**

- See RDU core services.

**Major Component Accomplishments in 2022**

See RDU narrative.

**Key Component Challenges**

See RDU narrative.

**Significant Changes in Results to be Delivered in FY2024**

See RDU narrative.

**Statutory and Regulatory Authority**

AS 16.05  
5 AAC

**Contact Information**

**Contact:** Sam Rabung, Director  
**Phone:** (907) 465-6100  
**E-mail:** samuel.rabung@alaska.gov

Southeast Region Fisheries Management Personal Services Information				
Authorized Positions			Personal Services Costs	
	FY2023 Management Plan	FY2024 Governor		
Full-time	65	65	Annual Salaries	7,715,356
Part-time	100	100	COLA	200,252
Nonpermanent	0	0	Premium Pay	700,469
			Annual Benefits	5,265,015
			<i>Less 6.76% Vacancy Factor</i>	<i>(938,692)</i>
			Lump Sum Premium Pay	0
<b>Totals</b>	<b>165</b>	<b>165</b>	<b>Total Personal Services</b>	<b>12,942,400</b>

Position Classification Summary					
Job Class Title	Anchorage	Fairbanks	Juneau	Others	Total
Accounting Clerk	0	0	1	0	1
Accounting Technician 1	0	0	1	0	1
Accounting Technician 3	0	0	1	0	1
Administrative Assistant 1	0	0	0	1	1
Administrative Assistant 2	0	0	1	0	1
Administrative Officer 1	0	0	1	0	1
Analyst/Programmer 4	0	0	2	0	2
Boat Officer 1	0	0	1	1	2
Boat Officer 2	0	0	1	0	1
Boat Officer 3	0	0	1	1	2
Boat Officer 4	0	0	1	1	2
Fish & Game Coordinator	0	0	3	2	5
Fish & Game Program Technician	0	0	0	6	6
Fish & Wildlife Technician 2	0	0	10	36	46
Fish & Wildlife Technician 3	0	0	10	21	31
Fish & Wildlife Technician 4	0	0	2	6	8
Fishery Biologist 1	0	0	4	4	8
Fishery Biologist 2	0	0	9	14	23
Fishery Biologist 3	0	0	5	9	14
Fishery Biologist 4	0	0	1	2	3
Office Assistant 2	0	0	1	3	4
Publications Specialist 2	0	0	1	0	1
Research Analyst 2	0	0	1	0	1
<b>Totals</b>	<b>0</b>	<b>0</b>	<b>58</b>	<b>107</b>	<b>165</b>

**Component Detail All Funds**  
**Department of Fish and Game**

**Component:** Southeast Region Fisheries Management (2167)  
**RDU:** Commercial Fisheries (143)

Non-Formula Component

	FY2022 Actuals	FY2023 Conference Committee	FY2023 Authorized	FY2023 Management Plan	FY2024 Governor	FY2023 Management Plan vs FY2024 Governor	
71000 Personal Services	12,417.7	12,618.6	12,618.6	12,618.6	12,942.4	323.8	2.6%
72000 Travel	212.9	196.5	196.5	425.5	425.5	0.0	0.0%
73000 Services	1,712.1	4,317.0	4,317.0	4,088.0	3,238.0	-850.0	-20.8%
74000 Commodities	1,397.2	699.1	699.1	699.1	1,499.1	800.0	114.4%
75000 Capital Outlay	103.8	133.3	133.3	133.3	133.3	0.0	0.0%
77000 Grants, Benefits	0.0	0.0	0.0	0.0	0.0	0.0	0.0%
78000 Miscellaneous	0.0	0.0	0.0	0.0	0.0	0.0	0.0%
<b>Totals</b>	<b>15,843.7</b>	<b>17,964.5</b>	<b>17,964.5</b>	<b>17,964.5</b>	<b>18,238.3</b>	<b>273.8</b>	<b>1.5%</b>
<b>Fund Sources:</b>							
1002 Fed Rcpts (Fed)	3,659.7	6,301.1	6,301.1	6,301.1	6,399.1	98.0	1.6%
1003 G/F Match (UGF)	217.2	775.5	775.5	775.5	788.2	12.7	1.6%
1004 Gen Fund (UGF)	8,071.1	7,601.9	7,601.9	7,601.9	7,726.7	124.8	1.6%
1005 GF/Prgm (DGF)	81.2	84.0	84.0	84.0	84.9	0.9	1.1%
1007 I/A Rcpts (Other)	1,850.1	56.3	56.3	56.3	56.3	0.0	0.0%
1024 Fish/Game (Other)	47.9	52.1	52.1	52.1	52.6	0.5	1.0%
1061 CIP Rcpts (Other)	71.3	102.4	102.4	102.4	104.5	2.1	2.1%
1108 Stat Desig (Other)	858.8	1,590.5	1,590.5	1,590.5	1,611.4	20.9	1.3%
1109 Test Fish (DGF)	408.1	810.7	810.7	810.7	813.3	2.6	0.3%
1201 CFEC Rcpts (DGF)	578.3	590.0	590.0	590.0	601.3	11.3	1.9%
<b>Unrestricted General (UGF)</b>	<b>8,288.3</b>	<b>8,377.4</b>	<b>8,377.4</b>	<b>8,377.4</b>	<b>8,514.9</b>	<b>137.5</b>	<b>1.6%</b>
<b>Designated General (DGF)</b>	<b>1,067.6</b>	<b>1,484.7</b>	<b>1,484.7</b>	<b>1,484.7</b>	<b>1,499.5</b>	<b>14.8</b>	<b>1.0%</b>
<b>Other Funds</b>	<b>2,828.1</b>	<b>1,801.3</b>	<b>1,801.3</b>	<b>1,801.3</b>	<b>1,824.8</b>	<b>23.5</b>	<b>1.3%</b>
<b>Federal Funds</b>	<b>3,659.7</b>	<b>6,301.1</b>	<b>6,301.1</b>	<b>6,301.1</b>	<b>6,399.1</b>	<b>98.0</b>	<b>1.6%</b>
<b>Positions:</b>							
Permanent Full Time	67	67	67	65	65	0	0.0%
Permanent Part Time	100	100	100	100	100	0	0.0%
Non Permanent	0	0	0	0	0	0	0.0%

**Change Record Detail - Multiple Scenarios with Descriptions**  
**Department of Fish and Game**

**Component:** Southeast Region Fisheries Management (2167)  
**RDU:** Commercial Fisheries (143)

Scenario/Change Record Title	Trans Type	Totals	Personal Services	Travel	Services	Commodities	Capital Outlay	Grants, Benefits	Miscellaneous	Positions		NP
										PFT	PPT	
***** Changes From FY2023 Conference Committee To FY2023 Authorized *****												
<b>FY2023 Conference Committee</b>												
	ConfCom	17,964.5	12,618.6	196.5	4,317.0	699.1	133.3	0.0	0.0	67	100	0
1002 Fed Rcpts		6,301.1										
1003 G/F Match		775.5										
1004 Gen Fund		7,601.9										
1005 GF/Prgm		84.0										
1007 I/A Rcpts		56.3										
1024 Fish/Game		52.1										
1061 CIP Rcpts		102.4										
1108 Stat Desig		1,590.5										
1109 Test Fish		810.7										
1201 CFEC Rcpts		590.0										
<b>Subtotal</b>		<b>17,964.5</b>	<b>12,618.6</b>	<b>196.5</b>	<b>4,317.0</b>	<b>699.1</b>	<b>133.3</b>	<b>0.0</b>	<b>0.0</b>	<b>67</b>	<b>100</b>	<b>0</b>
***** Changes From FY2023 Authorized To FY2023 Management Plan *****												
<b>Transfer Fish &amp; Wildlife Technician 4 (11-1939) to Arctic-Yukon-Kuskokwim Region Fisheries Management</b>												
	PosAdj	0.0	0.0	0.0	0.0	0.0	0.0	0.0	0.0	-1	0	0
Transfer full-time Fish & Wildlife Technician 4 (11-1939), range 13, located in Sitka, from the Southeast Region Fisheries Management component to the Arctic-Yukon-Kuskokwim (AYK) Region Fisheries Management component to meet project needs for the AYK administrative section. The remaining Southeast staff are sufficient to accommodate the anticipated workload.												
Department of Fish & Game positions are transferred statewide as needed to accommodate priority surveys and assessments required to accomplish the department's mission.												
<b>Transfer Fish &amp; Wildlife Technician 5 (11-1730) to Statewide Fisheries Management</b>												
	PosAdj	0.0	0.0	0.0	0.0	0.0	0.0	0.0	0.0	-1	0	0
Transfer a full-time Fish & Wildlife Technician 5 (11-1730), range 14, located in Douglas, from the Southeast Region Fisheries Management component to the Statewide Fisheries Management component to meet project needs for the AYK administrative section. The remaining Southeast staff are sufficient to accommodate the anticipated workload.												
Department of Fish & Game positions are transferred statewide as needed to accommodate priority surveys and assessments required to accomplish the department's mission.												
<b>Align Authority with Anticipated Expenditures</b>												
	LIT	0.0	0.0	229.0	-229.0	0.0	0.0	0.0	0.0	0	0	0
Transfer authority from services to travel to align with anticipated expenditures.												

**Change Record Detail - Multiple Scenarios with Descriptions**  
**Department of Fish and Game**

**Component:** Southeast Region Fisheries Management (2167)  
**RDU:** Commercial Fisheries (143)

Scenario/Change Record Title	Trans Type	Totals	Personal Services	Travel	Services	Commodities	Capital Outlay	Grants, Benefits	Miscellaneous	Positions		NP
										PFT	PPT	
<b>Subtotal</b>		<b>17,964.5</b>	<b>12,618.6</b>	<b>425.5</b>	<b>4,088.0</b>	<b>699.1</b>	<b>133.3</b>	<b>0.0</b>	<b>0.0</b>	<b>65</b>	<b>100</b>	<b>0</b>
***** <b>Changes From FY2023 Management Plan To FY2024 Governor</b> *****												
<b>Align Authority to Meet Anticipated Personal Services and Commodities Expenditures</b>												
LIT		0.0	50.0	0.0	-850.0	800.0	0.0	0.0	0.0	0	0	0

Transfer authority from services to personal services and commodities to align with anticipated expenditures. Personal service authorization is needed to meet increased costs associated with existing positions. Authorization is made available through reduced [services/commodities/travel] obligations within this component.

**FY2024 PERS Rate Adjustment**

	SalAdj	Totals	Personal Services	Travel	Services	Commodities	Capital Outlay	Grants, Benefits	Miscellaneous	PFT	PPT	NP
1002 Fed Rcpts	8.7	24.5	24.5	0.0	0.0	0.0	0.0	0.0	0.0	0	0	0
1003 G/F Match	1.1											
1004 Gen Fund	11.4											
1005 GF/Prgm	0.1											
1061 CIP Rcpts	0.2											
1108 Stat Desig	1.7											
1109 Test Fish	0.2											
1201 CFEC Rcpts	1.1											

FY2024 PERS rate adjustment to 25.10%: \$24.5

**FY2024 Salary and Health Insurance Increases**

	SalAdj	Totals	Personal Services	Travel	Services	Commodities	Capital Outlay	Grants, Benefits	Miscellaneous	PFT	PPT	NP
1002 Fed Rcpts	89.3	249.3	249.3	0.0	0.0	0.0	0.0	0.0	0.0	0	0	0
1003 G/F Match	11.6											
1004 Gen Fund	113.4											
1005 GF/Prgm	0.8											
1024 Fish/Game	0.5											
1061 CIP Rcpts	1.9											
1108 Stat Desig	19.2											
1109 Test Fish	2.4											
1201 CFEC Rcpts	10.2											

FY2024 Salary and Health Insurance Increases: \$249.3FY2024 GGU cost of living increase 2.5%: \$133.0

FY2024 SU cost of living increase 1%: \$55.9

FY2024 AlaskaCare insurance from \$1,685 to \$1,793 per member per month.: \$56.5

**Change Record Detail - Multiple Scenarios with Descriptions**  
**Department of Fish and Game**

**Component:** Southeast Region Fisheries Management (2167)  
**RDU:** Commercial Fisheries (143)

Scenario/Change Record Title	Trans Type	Totals	Personal Services	Travel	Services	Commodities	Capital Outlay	Grants, Benefits	Miscellaneous	Positions		NP
										PFT	PPT	
FY2024 GGU health insurance increase from \$1,567.50 to \$1,573.50 per member per month.: \$3.9												
	<b>Totals</b>	<b>18,238.3</b>	<b>12,942.4</b>	<b>425.5</b>	<b>3,238.0</b>	<b>1,499.1</b>	<b>133.3</b>	<b>0.0</b>	<b>0.0</b>	<b>65</b>	<b>100</b>	<b>0</b>

**Line Item Detail (1676)**  
**Department of Fish and Game**  
**Travel**

**Component:** Southeast Region Fisheries Management (2167)

Line Number	Line Name		FY2022 Actuals	FY2023 Management Plan	FY2024 Governor
2000	Travel		212.9	425.5	425.5
Object Class	Servicing Agency	Explanation	FY2022 Actuals	FY2023 Management Plan	FY2024 Governor
<b>2000 Travel Detail Totals</b>			<b>212.9</b>	<b>425.5</b>	<b>425.5</b>
2000	In-State Employee Travel	In-state employee travel including transportation and lodging	173.0	330.8	330.8
2002	Out of State Employee Travel	Out-of-state employee travel including transportation and lodging	39.5	78.9	78.9
2003	Out of State Non-Employee Travel	Out-of-state non-employee travel including transportation and lodging	0.3	0.6	0.6
2005	Moving Costs	Move costs including transferring household goods, transportation and lodging	0.0	15.0	15.0
2006	Other Travel Costs	Other travel fees including cash advances	0.1	0.2	0.2



**Line Item Detail (1676)**  
**Department of Fish and Game**  
**Services**

**Component:** Southeast Region Fisheries Management (2167)

Line Number	Line Name		FY2022 Actuals	FY2023 Management Plan	FY2024 Governor
3000	Services		1,712.1	4,088.0	3,238.0
Object Class	Servicing Agency	Explanation	FY2022 Actuals	FY2023 Management Plan	FY2024 Governor
<b>3000 Services Detail Totals</b>			<b>1,712.1</b>	<b>4,088.0</b>	<b>3,238.0</b>
3000	Education Services	Training/conference fees and memberships	22.1	44.5	44.5
3003	Information Technology	Information technology training and consulting services and software licensing and maintenance	14.0	20.0	22.0
3004	Telecommunications	Television, long distance, data/network and cell phone services	72.6	95.8	105.5
3005	Health Services	Medical tests and exams	2.8	6.6	6.6
3006	Delivery Services	Freight and postage	100.3	237.4	200.2
3007	Advertising and Promotions	Classified newspaper, radio, and television advertisements	8.1	19.4	19.4
3008	Utilities	Electric, water, sewage, disposal and heating services	52.3	62.8	70.0
3009	Structure/Infrastructure/Land	Appraisal, architect, engineer services and structure/land maintenance and rentals	82.0	90.2	100.0
3010	Equipment/Machinery	Equipment rental, maintenance services and equipment operator charges	403.8	445.0	489.0
3011	Other Services	Printing, copy services, transportation and consulting services. Environmental and economic development fees	827.1	2,861.7	1,963.9
3015	Inter-Agency Conservation/Environmental	FishGm - Wildlife Conservation (473) Wrangell Office	21.8	66.2	66.2
3024	Inter-Agency Legal	Law - Department-wide RSA - Pacific Salmon Outside	2.4	15.0	15.0

**Line Item Detail (1676)**  
**Department of Fish and Game**  
**Services**

**Component:** Southeast Region Fisheries Management (2167)

<b>Object Class</b>	<b>Servicing Agency</b>	<b>Explanation</b>	<b>FY2022 Actuals</b>	<b>FY2023 Management Plan</b>	<b>FY2024 Governor</b>
<b>3000 Services Detail Totals</b>			<b>1,712.1</b>	<b>4,088.0</b>	<b>3,238.0</b>
3037	State Equipment Fleet	Counsel State Equipment Fleet	102.8	123.4	135.7

**Line Item Detail (1676)**  
**Department of Fish and Game**  
**Commodities**

**Component:** Southeast Region Fisheries Management (2167)

Line Number	Line Name		FY2022 Actuals	FY2023 Management Plan	FY2024 Governor
4000	Commodities		1,397.2	699.1	1,499.1
Object Class	Servicing Agency	Explanation	FY2022 Actuals	FY2023 Management Plan	FY2024 Governor
<b>4000 Commodities Detail Totals</b>			<b>1,397.2</b>	<b>699.1</b>	<b>1,499.1</b>
4000	Business	Books, furniture, tools, business supplies and information technology equipment <\$5,000	269.7	99.8	287.2
4002	Household/Institutional	Landscaping, food, and cleaning supplies	264.9	100.0	285.2
4003	Scientific and Medical	Instruments, lab and non-lab supplies (Scientific and Medical)	401.8	173.3	432.6
4004	Safety	Firearms, ammunition, and other safety supplies	21.8	10.9	23.4
4005	Building Materials	Screws, lumber, nuts, bolts, and other building materials	47.2	20.0	48.9
4006	Signs and Markers	Signs and marker supplies	0.1	0.1	0.1
4011	Electrical	Key-card readers, bulbs, batteries, and other electrical supplies	0.1	0.1	0.1
4013	Lube Oils/Grease/Solvents	Marine and motor oil, fuel stabilizer, and other lube oils, grease and solvents	8.8	4.4	9.5
4014	Bottled Gas	Propane, oxygen, and other bottled gases	0.9	0.5	0.9
4015	Parts and Supplies	Parts and supplies	113.4	45.0	122.1
4016	Paint/Preservatives	Paint and preservatives	2.1	1.0	2.3
4019	Small Tools/Minor Equipment	Flat sockets, drill bits, hooks, hammers, and other small tools	31.9	9.0	34.3
4020	Equipment Fuel	Equipment fuel	234.5	235.0	252.5

**Line Item Detail (1676)**  
**Department of Fish and Game**  
**Capital Outlay**

**Component:** Southeast Region Fisheries Management (2167)

<b>Line Number</b>	<b>Line Name</b>		<b>FY2022 Actuals</b>	<b>FY2023 Management Plan</b>	<b>FY2024 Governor</b>
5000	Capital Outlay		103.8	133.3	133.3
<b>Object Class</b>	<b>Servicing Agency</b>	<b>Explanation</b>	<b>FY2022 Actuals</b>	<b>FY2023 Management Plan</b>	<b>FY2024 Governor</b>
<b>5000 Capital Outlay Detail Totals</b>			<b>103.8</b>	<b>133.3</b>	<b>133.3</b>
5004	Equipment	Automobile and marine equipment	103.8	133.3	133.3

**Revenue Detail (1681)**  
**Department of Fish and Game**

**Component:** Southeast Region Fisheries Management (2167)

Revenue Type (OMB Fund Code) Revenue Source	Component	Comment	FY2022 Actuals	FY2023 Management Plan	FY2024 Governor
<b>5002 Fed Rcpts (1002 Fed Rcpts)</b>			<b>3,659.7</b>	<b>6,301.1</b>	<b>6,399.1</b>
5003 Federal - Indirect Recovery		Federal indirect revenue carryforward	21.9	21.9	21.9
5010 Federal Natural Resources - Miscellaneous Grants		Federal receipts are primarily from the National Marine Fisheries Service (NOAA)	3,637.8	6,279.2	6,377.2
<b>5005 GF/Prgm (1005 GF/Prgm)</b>			<b>81.2</b>	<b>84.0</b>	<b>84.9</b>
5101 Program Receipts Public Protection - Licenses and Permits		Revenue from the sale of commercial crew licenses	81.2	84.0	84.9
<b>5007 I/A Rcpts (1007 I/A Rcpts)</b>			<b>1,850.1</b>	<b>56.3</b>	<b>56.3</b>
5301 Inter-Agency Receipts		RSA - Projects to be determined	0.0	56.3	56.3
5301 Inter-Agency Receipts	FishGm - Sport Fisheries (464)	RSA - Whiting Harbor D.Vexillum Survey, Salmon Stock Assessment Research Program Transfer	1,850.1	0.0	0.0
<b>5061 CIP Rcpts (1061 CIP Rcpts)</b>			<b>71.3</b>	<b>102.4</b>	<b>104.5</b>
5351 Capital Improvement Project Inter-Agency		Receipts for personal services associated with capital funded projects	71.3	102.4	104.5
<b>5108 Stat Desig (1108 Stat Desig)</b>			<b>858.8</b>	<b>1,590.5</b>	<b>1,611.4</b>
5201 Statutory Dsgntd Prgrm Rcpts Pblc Prtctn - Permits and Fees		Buoy tag fees	53.1	16.2	52.7
5206 Statutory Designated Program Receipts - Contracts		Receipts from a variety of outside agencies including but not limited to: Pacific Salmon Commission, Pacific States Marine Fisheries Commission, and Southeast Alaska Dive Fisheries Association	805.7	1,574.3	1,558.7
<b>5109 Test Fish (1109 Test Fish)</b>			<b>1,108.7</b>	<b>810.7</b>	<b>813.3</b>
5401 Test Fisheries Receipts		Revenue received from the sale of fish	1,108.7	810.7	813.3

**Revenue Detail (1681)**  
**Department of Fish and Game**

**Component:** Southeast Region Fisheries Management (2167)

Revenue Type (OMB Fund Code) Revenue Source	Component	Comment	FY2022 Actuals	FY2023 Management Plan	FY2024 Governor
<b>5201 CFEC Rcpts (1201 CFEC Rcpts)</b>			<b>578.3</b>	<b>590.0</b>	<b>601.3</b>
5406 Commercial Fisheries Entry Commission Receipts		Revenue transferred from the Commercial Fisheries Entry Commission	578.3	590.0	601.3
<b>6003 G/F Match (1003 G/F Match)</b>			<b>0.2</b>	<b>0.0</b>	<b>0.0</b>
6102 Match - Prior Year Reimbursement Recovery		Prior-year recovery	0.2	0.0	0.0
<b>6004 Gen Fund (1004 Gen Fund)</b>			<b>0.2</b>	<b>0.0</b>	<b>0.0</b>
6046 General Fund - Prior Year Reimbursement Recovery		Prior-year recovery	0.2	0.0	0.0
<b>6024 Fish/Game (1024 Fish/Game)</b>			<b>47.9</b>	<b>52.1</b>	<b>52.6</b>
6136 Fish & Game Fund - Misc Penalties Late Fees		Fish and Game fund receipts from fines and forfeitures	47.9	52.1	52.6

**Inter-Agency Services (1682)**  
**Department of Fish and Game**

**Component:** Southeast Region Fisheries Management (2167)

				FY2022 Actuals	FY2023 Management Plan	FY2024 Governor
<b>Component Totals</b>				<b>24.2</b>	<b>81.2</b>	<b>81.2</b>
				With Department of Fish and Game	21.8	66.2
				With Department of Law	2.4	15.0
Object Class	Servicing Agency	Explanation		FY2022 Actuals	FY2023 Management Plan	FY2024 Governor
3015	Inter-Agency Conservation/Environmental	FishGm - Wildlife Conservation (473)	Wrangell Office	21.8	66.2	66.2
3024	Inter-Agency Legal	Law - Department-wide	RSA - Pacific Salmon Outside Counsel	2.4	15.0	15.0

**Personal Services Expenditure Detail**  
**Department of Fish and Game**

**Scenario:** FY2024 Governor (19867)  
**Component:** Southeast Region Fisheries Management (2167)  
**RDU:** Commercial Fisheries (143)

PCN	Job Class Title	Time Status	Retire Code	Barg Unit	Location	Salary Sched	Range / Step	Comp Months	Split / Count	Annual Salaries	COLA	Premium Pay	Annual Benefits	Total Costs	UGF Amount
11-?002	Fish & Game Program Technician	FT	A	GP	Wrangell	100	12A	12.0		41,672	1,438	0	34,830	77,940	77,940
11-0107	Biometrician 2	FT	A	GP	Kodiak	211	19D	0.2	*	1,372	207	4,759	2,434	8,772	8,772
11-0226	Fish & Wildlife Technician 3	PT	A	GP	Juneau	205	11B	2.3	*	8,146	281	0	6,736	15,163	0
11-1002	Fish & Game Coordinator	FT	A	SS	Douglas	99	22P	12.0		145,963	2,014	0	77,124	225,101	0
11-1003	Fish & Game Coordinator	FT	A	SS	Douglas	205	22E / F	12.0		104,998	1,516	4,847	63,403	174,764	167,773
11-1004	Fishery Biologist 3	FT	A	SS	Douglas	205	18L / M	12.0		91,328	1,356	6,922	58,998	158,604	133,227
11-1008	Fishery Biologist 3	FT	A	SS	Sitka	205	18J / K	12.0		86,018	1,364	12,839	59,228	159,449	157,855
11-1010	Fishery Biologist 3	FT	A	SS	Petersburg	99	18Q / R	12.0		102,805	1,437	1,334	61,235	166,811	98,419
11-1011	Fishery Biologist 2	FT	A	GP	Douglas	205	16B / C	12.0		59,838	2,172	3,122	42,917	108,049	105,888
11-1012	Administrative Assistant 1	FT	A	GP	Petersburg	200	12L / M	12.0		57,072	1,969	0	40,680	99,721	49,861
11-1013	Fishery Biologist 2	FT	A	GP	Petersburg	200	16L / M	12.0		74,368	2,658	2,691	48,273	127,990	52,476
11-1014	Fishery Biologist 3	FT	A	SS	Ketchikan	200	18M	12.0		89,440	1,424	13,759	60,878	165,501	160,536
11-1015	Fisheries Scientist 1	FT	A	SS	Juneau	205	22E / F	11.9	*	103,659	1,430	0	60,872	165,961	0
11-1016	Fishery Biologist 2	FT	A	GP	Ketchikan	99	16O	12.0		83,228	3,226	10,293	54,527	151,274	143,710
11-1018	Fishery Biologist 2	FT	A	GP	Ketchikan	200	16C / D	12.0		59,263	2,184	4,040	43,047	108,534	72,718
11-1048	Fish & Game Program Technician	FT	A	SS	Sitka	605	12C / D	12.0		49,590	692	547	40,720	91,549	91,549
11-1049	Fishery Biologist 2	FT	A	SS	Petersburg	99	16O / P	12.0		86,758	1,197	0	54,632	142,587	118,347
11-1062	Fishery Biologist 3	FT	A	SS	Sitka	205	18F / J	12.0		85,098	1,214	2,894	55,101	144,307	0
11-1067	Fishery Biologist 2	FT	A	SS	Douglas	205	16M / N	12.0		83,942	1,250	6,610	56,073	147,875	146,396
11-1101	Boat Officer 3	FT	A	GP	Petersburg	200	17G / J	12.0		71,385	3,523	30,747	57,799	163,454	158,550
11-1105	Boat Officer 3	FT	A	GP	Douglas	205	17C / D	12.0		65,517	2,830	16,507	50,160	135,014	133,664
11-1106	Boat Officer 4	FT	A	SS	Petersburg	200	19K	12.0		89,710	1,795	40,390	71,098	202,993	194,873
11-1108	Boat Officer 4	FT	A	SS	Douglas	205	19K	12.0		94,203	1,674	27,146	67,773	190,796	181,256
11-1114	Boat Officer 2	FT	A	GP	Douglas	205	15K / L	12.0		70,861	3,049	17,524	52,576	144,010	139,690
11-1124	Fish & Wildlife Technician 2	PT	A	GP	Haines	200	9B	1.5		4,446	153	0	4,064	8,663	8,663
11-1128	Fish & Wildlife Technician 2	PT	A	GP	Douglas	205	9B	2.0		6,224	313	2,843	5,028	14,408	14,408
11-1129	Analyst/Programmer 5	FT	A	SS	Juneau	99	22O	2.0	*	22,201	306	0	12,046	34,553	0
11-1132	Fishery Biologist 1	PT	A	GP	Douglas	205	14B / C	10.0		43,427	1,595	2,798	33,393	81,213	19,491
11-1133	Program Coordinator 1	FT	A	GP	Juneau	205	18G	6.0	*	39,887	1,376	0	24,652	65,915	0
11-1154	Fish & Wildlife Technician 2	PT	A	GP	Douglas	205	9C / D	6.5		21,046	1,046	9,274	21,810	53,176	0
11-1163	Fish & Wildlife Technician 2	PT	A	GP	Douglas	205	9C	5.0		16,023	910	10,353	17,936	45,222	0
11-1165	Fish & Wildlife Technician 2	PT	A	GP	Haines	200	9B	1.5		4,446	153	0	4,064	8,663	8,663
11-1167	E/J Prog Mgr	FT	A	SS	Juneau	205	24M	7.0	*	81,827	1,129	0	43,728	126,684	0
11-1203	Fisheries Scientist 2	FT	A	SS	Juneau	205	24M	0.1	*	1,169	80	4,767	2,154	8,170	8,170
11-1218	Administrative Officer 1	FT	A	SS	Douglas	205	17E / F	12.0		77,230	1,066	0	51,012	129,308	0
11-1229	Fishery Biologist 3	FT	A	SS	Sitka	205	18D / E	12.0		79,305	1,126	2,303	52,675	135,409	135,409

Note: If a position is split, an asterisk (\*) will appear in the Split/Count column. If the split position is also counted in the component, two asterisks (\*\*) will appear in this column. [No valid job title] appearing in the Job Class Title indicates that the PCN has an invalid class code or invalid range for the class code effective date of this scenario.



**Personal Services Expenditure Detail**  
**Department of Fish and Game**

**Scenario:** FY2024 Governor (19867)  
**Component:** Southeast Region Fisheries Management (2167)  
**RDU:** Commercial Fisheries (143)

PCN	Job Class Title	Time Status	Retire Code	Barg Unit	Location	Salary Sched	Range / Step	Comp Months	Split / Count	Annual Salaries	COLA	Premium Pay	Annual Benefits	Total Costs	UGF Amount
11-1232	Fishery Biologist 1	PT	A	GP	Douglas	205	14D / E	12.0		55,981	2,460	15,330	46,090	119,861	106,676
11-1233	Office Assistant 2	FT	A	GP	Ketchikan	200	10C / D	12.0		39,838	1,374	0	34,133	75,345	62,536
11-1253	Fisheries Scientist 2	FT	A	SS	Anchorage	200	24P	1.0	*	12,306	170	0	6,481	18,957	0
11-1254	Fishery Biologist 2	FT	A	GP	Juneau	205	16A / B	9.4	*	45,714	1,577	0	32,249	79,540	0
11-1259	Fishery Biologist 4	FT	A	SS	Douglas	99	20R / S	12.0		130,240	2,179	27,693	81,671	241,783	241,783
11-1274	Publications Specialist 2	FT	A	GP	Douglas	205	16P / Q	12.0		88,859	3,065	0	52,756	144,680	0
11-1282	Fish & Game Coordinator	FT	A	SS	Petersburg	200	22K	12.0		109,450	1,692	13,152	68,249	192,543	192,543
11-1297	Fishery Biologist 2	FT	A	SS	Petersburg	200	16C / D	12.0		63,479	959	6,027	48,078	118,543	118,543
11-1298	Fishery Biologist 3	FT	A	SS	Douglas	205	18E / F	12.0		80,614	1,112	0	52,298	134,024	67,012
11-1302	Fishery Biologist 1	PT	A	SS	Haines	600	14C	10.0		44,391	613	0	34,925	79,929	79,929
11-1303	Fish & Wildlife Technician 4	PT	A	GP	Petersburg	200	13D	7.0		28,290	1,079	2,999	22,969	55,337	55,337
11-1304	Fishery Biologist 1	FT	A	GP	Petersburg	200	14J / K	12.0		60,343	2,291	6,059	44,225	112,918	112,918
11-1310	Fishery Biologist 3	FT	A	SS	Haines	200	18J / K	12.0		82,366	1,153	1,169	53,408	138,096	138,096
11-1311	Boat Officer 1	PT	A	GP	Douglas	205	13B / C	6.0		24,214	1,220	11,137	22,929	59,500	56,525
11-1324	Accounting Technician 1	FT	A	GP	Douglas	205	12D / E	12.0		48,497	1,673	0	37,423	87,593	87,593
11-1325	Fishery Biologist 2	PT	A	SS	Sitka	205	16B / C	11.0		59,298	849	2,202	43,230	105,579	0
11-1338	Analyst/Programmer 4	FT	A	GP	Douglas	205	20J / K	12.0		96,358	3,324	0	55,605	155,287	26,399
11-1345	Fish & Wildlife Technician 3	PT	A	GP	Ketchikan	200	11C	4.5		15,473	534	0	9,440	25,447	21,884
11-1348	Fishery Biologist 2	PT	A	SS	Ketchikan	200	16C / D	12.0		63,518	911	2,476	46,744	113,649	21,593
11-1349	Fishery Biologist 3	FT	A	SS	Douglas	205	18L / M	12.0		92,435	1,727	32,739	69,226	196,127	188,282
11-1357	Biometrician 2	FT	A	GP	Juneau	205	19L / M	0.1	*	814	70	1,228	891	3,003	3,003
11-1358	Fish & Wildlife Technician 4	PT	N	GP	Douglas	205	13C / D	7.0		29,323	1,036	7,385	4,732	42,476	26,335
11-1359	Fish & Wildlife Technician 2	PT	A	GP	Douglas	205	9A	2.0		6,042	307	2,844	4,959	14,152	14,152
11-1367	Fishery Biologist 2	FT	A	SS	Sitka	205	16F / J	12.0		73,274	1,101	6,489	51,975	132,839	131,511
11-1421	Fish & Wildlife Technician 3	PT	A	GP	Douglas	205	11A	0.5		1,705	59	0	1,044	2,808	0
11-1443	Fish & Game Program Technician	PT	A	GP	Haines	200	12J	3.4	**	15,063	520	0	11,105	26,688	26,688
11-1452	Fish & Wildlife Technician 2	PT	A	GP	Sitka	205	9A	3.0		9,063	313	0	5,818	15,194	10,180
11-1460	Analyst/Programmer 3	FT	A	GP	Juneau	205	18K	6.9	*	49,313	1,701	0	29,658	80,672	0
11-1463	Office Assistant 2	FT	A	GP	Petersburg	200	10C / D	12.0		39,658	1,379	314	34,184	75,535	30,969
11-1504	Fish & Wildlife Technician 2	PT	A	GP	Douglas	205	9B	3.5		10,892	376	0	6,909	18,177	0
11-1508	Fish & Wildlife Technician 2	PT	A	GP	Yakutat	200	9B	4.0		11,856	409	0	7,671	19,936	19,936
11-1520	Fish & Wildlife Technician 2	PT	A	GP	Petersburg	200	9B	2.0		5,928	205	0	3,835	9,968	0
11-1526	Fish & Wildlife Technician 2	PT	A	GP	Sitka	205	9B	1.0		3,112	107	0	1,974	5,193	0
11-1530	Fish & Wildlife Technician 2	PT	A	GP	Yakutat	200	9A	2.5		7,191	295	1,354	5,225	14,065	14,065
11-1581	Fish & Wildlife Technician 3	PT	A	GP	Douglas	205	11C	6.0		21,665	919	4,966	14,867	42,417	11,877
11-1582	Fish & Wildlife Technician 3	PT	A	GP	Haines	200	11B / C	5.0		16,851	631	1,443	10,908	29,833	29,833
11-1584	Fishery Biologist 2	FT	A	GP	Douglas	205	16K	12.0		75,017	2,708	3,467	48,815	130,007	2,600

Note: If a position is split, an asterisk (\*) will appear in the Split/Count column. If the split position is also counted in the component, two asterisks (\*\*) will appear in this column. [No valid job title] appearing in the Job Class Title indicates that the PCN has an invalid class code or invalid range for the class code effective date of this scenario.

**Personal Services Expenditure Detail**  
**Department of Fish and Game**

**Scenario:** FY2024 Governor (19867)  
**Component:** Southeast Region Fisheries Management (2167)  
**RDU:** Commercial Fisheries (143)

PCN	Job Class Title	Time Status	Retire Code	Barg Unit	Location	Salary Sched	Range / Step	Comp Months	Split / Count	Annual Salaries	COLA	Premium Pay	Annual Benefits	Total Costs	UGF Amount
11-1586	Fish & Wildlife Technician 4	PT	A	GP	Sitka	205	13D / E	4.8		20,771	857	4,070	17,037	42,735	41,026
11-1587	Fish & Wildlife Technician 2	PT	A	GP	Ketchikan	200	9A	1.0		2,876	99	0	1,884	4,859	0
11-1589	Fish & Wildlife Technician 3	PT	A	GP	Haines	200	11C	5.0		17,193	604	317	10,610	28,724	28,724
11-1614	Fishery Biologist 2	FT	A	GP	Douglas	205	16A / B	12.0		58,516	2,465	12,937	46,144	120,062	120,062
11-1617	Fish & Wildlife Technician 3	PT	A	GP	Douglas	205	11C / D	8.5		30,702	1,815	21,897	33,440	87,854	0
11-1622	Fish & Wildlife Technician 3	PT	A	GP	Petersburg	200	11A / B	3.0		10,023	346	0	6,183	16,552	0
11-1623	Fish & Wildlife Technician 2	PT	A	GP	Ketchikan	200	9B	2.5		7,410	256	0	4,794	12,460	9,470
11-1624	Fish & Wildlife Technician 2	PT	A	GP	Sitka	205	9B	1.0		3,112	107	0	1,974	5,193	0
11-1632	Fish & Wildlife Technician 3	PT	A	GP	Douglas	205	11B	2.3		8,069	395	3,384	7,992	19,840	19,840
11-1633	Fishery Biologist 2	FT	A	GP	Douglas	205	16M	12.0		79,970	3,030	7,862	52,366	143,228	143,228
11-1647	Fish & Wildlife Technician 2	PT	A	GP	Juneau	205	9A	2.1	*	6,344	219	0	5,735	12,298	0
11-1657	Fish & Wildlife Technician 2	PT	A	GP	Wrangell	200	9B	2.0		5,928	205	0	3,835	9,968	0
11-1662	Fish & Wildlife Technician 3	PT	A	GP	Haines	200	11A	4.0		12,987	512	1,843	8,800	24,142	24,142
11-1670	Fish & Wildlife Technician 2	PT	A	GP	Haines	200	9B	4.5		13,338	504	1,284	12,679	27,805	27,805
11-1672	Fish & Wildlife Technician 3	PT	A	GP	Haines	200	11K	8.0		33,618	1,319	4,616	20,858	60,411	0
11-1689	Fish & Wildlife Technician 3	PT	A	GP	Ketchikan	200	11B	4.0		13,364	461	0	8,243	22,068	5,517
11-1693	Fishery Biologist 2	FT	A	GP	Sitka	205	16P / Q	12.0		90,053	3,107	0	53,210	146,370	134,660
11-1694	Fishery Biologist 3	FT	A	SS	Petersburg	99	18P / Q	12.0		99,565	1,462	6,405	61,931	169,363	169,363
11-1696	Fish & Wildlife Technician 3	PT	A	GP	Douglas	205	11B / C	5.0		17,982	620	0	10,789	29,391	11,756
11-1697	Fishery Biologist 2	FT	A	SS	Ketchikan	200	16C / D	12.0		62,539	870	523	45,630	109,562	54,781
11-1698	Fishery Biologist 3	FT	A	SS	Juneau	205	18D	1.1	*	7,107	98	0	4,687	11,892	0
11-1701	Fish & Wildlife Technician 2	PT	A	GP	Douglas	205	9B	4.0		12,448	429	0	7,895	20,772	0
11-1703	Fish & Wildlife Technician 2	PT	A	GP	Haines	200	9B	1.0		2,964	102	0	1,918	4,984	4,984
11-1705	Fish & Wildlife Technician 2	PT	A	GP	Ketchikan	200	9C / D	8.0		24,512	1,455	17,676	28,693	72,336	0
11-1707	Fish & Wildlife Technician 2	PT	A	GP	Haines	200	9B	4.5		13,338	504	1,284	12,679	27,805	27,805
11-1708	Office Assistant 2	FT	A	GP	Sitka	205	10B / C	12.0		40,336	1,414	639	34,565	76,954	51,559
11-1713	Fish & Wildlife Technician 4	PT	A	GP	Petersburg	200	13C	8.0		31,265	1,079	0	24,543	56,887	39,252
11-1714	Fish & Wildlife Technician 2	PT	A	GP	Petersburg	200	9B	2.5		7,410	256	0	4,794	12,460	0
11-1715	Fish & Wildlife Technician 4	FT	A	GP	Ketchikan	200	13D / E	12.0		49,930	1,749	783	38,265	90,727	30,847
11-1726	Fish & Wildlife Technician 2	PT	A	GP	Douglas	205	9B / C	2.0		6,409	261	1,168	4,462	12,300	0
11-1727	Fish & Wildlife Technician 2	PT	A	GP	Haines	200	9C	7.0		21,362	834	2,817	14,727	39,740	39,740
11-1731	Fish & Wildlife Technician 2	PT	A	GP	Ketchikan	200	9B	2.5		7,410	256	0	4,794	12,460	9,470
11-1733	Fish & Wildlife Technician 3	PT	A	GP	Ketchikan	200	11B	4.0		13,364	461	0	8,243	22,068	16,551
11-1734	Fish & Wildlife Technician 2	PT	A	GP	Sitka	205	9B	4.0		12,448	429	0	7,895	20,772	0
11-1735	Fish & Wildlife Technician 3	PT	A	GP	Petersburg	200	11B	4.0		13,364	461	0	8,243	22,068	16,551
11-1740	Fish & Wildlife Technician 2	PT	A	GP	Douglas	205	9C	6.5		20,829	1,085	10,634	22,244	54,792	0
11-1741	Fish & Wildlife Technician 3	PT	A	GP	Yakutat	200	11B	2.5		8,353	341	1,542	5,738	15,974	15,974
11-1743	Fish & Wildlife Technician 4	PT	A	GP	Douglas	205	13K	8.0		40,560	1,399	0	28,075	70,034	0

Note: If a position is split, an asterisk (\*) will appear in the Split/Count column. If the split position is also counted in the component, two asterisks (\*\*) will appear in this column.  
 [No valid job title] appearing in the Job Class Title indicates that the PCN has an invalid class code or invalid range for the class code effective date of this scenario.

**Personal Services Expenditure Detail**  
**Department of Fish and Game**

**Scenario:** FY2024 Governor (19867)  
**Component:** Southeast Region Fisheries Management (2167)  
**RDU:** Commercial Fisheries (143)

PCN	Job Class Title	Time Status	Retire Code	Barg Unit	Location	Salary Sched	Range / Step	Comp Months	Split / Count	Annual Salaries	COLA	Premium Pay	Annual Benefits	Total Costs	UGF Amount
11-1744	Fish & Wildlife Technician 4	FT	A	GP	Juneau	205	13M	1.4	*	7,618	263	0	5,111	12,992	0
11-1746	Fish & Wildlife Technician 2	PT	A	GP	Ketchikan	200	9B	2.5		7,410	256	0	4,794	12,460	9,470
11-1748	Fish & Game Coordinator	FT	A	SS	Ketchikan	200	22N / O	12.0		124,221	1,714	0	68,864	194,799	0
11-1765	Fish & Wildlife Technician 3	PT	A	GP	Ketchikan	200	11B / C	3.0		10,121	369	568	6,436	17,494	12,421
11-1777	Fishery Biologist 3	FT	A	SS	Douglas	605	18M / N	12.0		95,028	1,311	0	57,774	154,113	0
11-1780	Fishery Biologist 2	FT	A	SS	Petersburg	200	16A	12.0		57,658	837	2,976	44,707	106,178	0
11-1821	Analyst/Programmer 4	FT	A	GP	Douglas	205	20K / L	12.0		100,958	3,483	0	57,353	161,794	108,402
11-1822	Fish & Wildlife Technician 3	PT	A	GP	Douglas	205	11B / C	6.5		23,142	1,149	10,168	22,945	57,404	0
11-1824	Fishery Biologist 3	FT	A	SS	Sitka	205	18N	12.0		96,970	1,338	0	58,512	156,820	51,751
11-1829	Fish & Wildlife Technician 3	PT	A	GP	Douglas	205	11B / C	2.0		7,222	366	3,399	7,201	18,188	18,188
11-1835	Accounting Technician 3	FT	A	SS	Douglas	605	16M	12.0		81,203	1,121	0	52,522	134,846	0
11-1837	Fish & Wildlife Technician 3	PT	A	GP	Wrangell	200	11B	1.0		3,341	115	0	2,061	5,517	0
11-1841	Office Assistant 2	FT	A	GP	Douglas	205	10F / G	12.0		45,719	1,577	0	36,367	83,663	48,525
11-1847	Fish & Wildlife Technician 3	PT	A	GP	Petersburg	200	11B	3.0		10,023	346	0	6,183	16,552	5,462
11-1848	Fish & Wildlife Technician 3	PT	A	GP	Sitka	205	11C / D	11.5		42,386	1,462	0	25,206	69,054	0
11-1870	Fish & Wildlife Technician 2	PT	A	GP	Craig	200	9B	2.5		7,410	256	0	4,794	12,460	0
11-1871	Fish & Wildlife Technician 2	PT	A	GP	Sitka	205	9D	3.8		12,535	508	2,196	11,613	26,852	25,778
11-1872	Fish & Wildlife Technician 2	PT	A	GP	Sitka	205	9B	1.0		3,112	107	0	1,974	5,193	0
11-1875	Research Analyst 2	FT	A	GP	Douglas	205	16N	12.0		82,583	2,849	0	50,372	135,804	67,902
11-1876	Fish & Wildlife Technician 3	PT	A	GP	Haines	200	11B / C	5.0		16,754	603	740	10,604	28,701	28,701
11-1878	Fish & Wildlife Technician 2	PT	A	GP	Haines	200	9B	3.5		10,374	404	1,340	9,991	22,109	22,109
11-1896	Fish & Wildlife Technician 3	PT	A	GP	Sitka	205	11B / C	9.0		31,985	1,232	3,734	27,819	64,770	1,943
11-1897	Fish & Wildlife Technician 2	PT	A	GP	Petersburg	200	9B	2.5		7,410	256	0	4,794	12,460	0
11-1898	Fishery Biologist 2	FT	A	GP	Anchorage	200	16G	1.8	*	9,968	344	0	6,637	16,949	16,949
11-1928	Fishery Biologist 4	FT	A	SS	Ketchikan	99	20P / Q	12.0		123,907	1,710	0	68,745	194,362	194,362
11-1934	Fish & Wildlife Technician 4	PT	A	GP	Craig	200	13J / K	12.0		57,935	1,999	0	31,509	91,443	0
11-1935	Fish & Wildlife Technician 2	PT	A	GP	Ketchikan	200	9A	2.0		5,753	198	0	3,769	9,720	0
11-1940	Fishery Biologist 1	PT	A	GP	Sitka	205	14D / E	10.0		46,881	1,726	3,159	34,842	86,608	2,598
11-1943	Fish & Wildlife Technician 3	PT	A	GP	Wrangell	200	11B	3.0		10,023	557	6,137	8,514	25,231	0
11-1944	Fishery Biologist 2	FT	A	SS	Douglas	205	16A	12.0		60,549	836	0	44,675	106,060	0
11-1945	Fish & Wildlife Technician 2	PT	A	GP	Ketchikan	200	9B	2.5		7,410	256	0	4,794	12,460	9,470
11-1950	Fishery Biologist 1	FT	A	GP	Douglas	205	14A	12.0		49,238	2,004	8,858	41,069	101,169	95,099
11-1951	Accounting Clerk	PT	A	GP	Douglas	205	10B / C	12.0		40,513	1,401	93	24,926	66,933	28,112
11-4032	Fishery Biologist 3	FT	A	SS	Douglas	205	18M	12.0		93,912	1,296	0	57,350	152,558	0
11-4067	Fish & Wildlife Technician 2	PT	A	GP	Wrangell	200	9B	2.0		5,928	345	4,076	5,384	15,733	0
11-4099	Fish & Wildlife Technician 3	PT	A	GP	Juneau	205	11B	1.4	*	4,912	169	0	4,083	9,164	0
11-4107	Fishery Biologist 3	FT	A	SS	Haines	200	18M	12.0		89,440	1,234	0	55,651	146,325	0
11-4113	Fishery Biologist 2	FT	A	SS	Douglas	205	16L / M	12.0		80,659	1,113	0	52,315	134,087	134,087

Note: If a position is split, an asterisk (\*) will appear in the Split/Count column. If the split position is also counted in the component, two asterisks (\*\*) will appear in this column.  
 [No valid job title] appearing in the Job Class Title indicates that the PCN has an invalid class code or invalid range for the class code effective date of this scenario.

**Personal Services Expenditure Detail**  
**Department of Fish and Game**

**Scenario:** FY2024 Governor (19867)  
**Component:** Southeast Region Fisheries Management (2167)  
**RDU:** Commercial Fisheries (143)

PCN	Job Class Title	Time Status	Retire Code	Barg Unit	Location	Salary Sched	Range / Step	Comp Months	Split / Count	Annual Salaries	COLA	Premium Pay	Annual Benefits	Total Costs	UGF Amount
11-4215	Fish & Wildlife Technician 3	PT	A	GP	Douglas	205	11F	2.0		8,878	619	9,073	8,403	26,973	0
11-4229	Fish & Wildlife Technician 3	PT	A	GP	Wrangell	200	11B / C	6.0		20,231	1,230	15,420	18,293	55,174	0
11-4266	Fish & Wildlife Technician 2	PT	A	GP	Douglas	205	9B / C	2.0		6,270	470	7,353	6,759	20,852	0
11-4296	Fish & Wildlife Technician 3	PT	A	GP	Haines	200	11J	4.0		16,283	638	2,216	10,194	29,331	0
11-4313	Fish & Wildlife Technician 2	PT	A	GP	Haines	200	9G	3.0		10,316	390	983	6,667	18,356	0
11-4322	Fishery Biologist 2	FT	A	SS	Ketchikan	200	16F / J	12.0		70,805	977	0	48,571	120,353	120,353
11-4324	Fish & Wildlife Technician 2	PT	A	GP	Douglas	205	9E / F	8.0		27,869	1,473	14,822	22,551	66,715	0
11-4326	Fish & Wildlife Technician 3	PT	A	GP	Douglas	205	11G	2.0		8,206	606	9,374	8,262	26,448	0
11-4328	Fish & Wildlife Technician 3	PT	A	GP	Haines	200	11F	7.0		26,424	1,031	3,467	16,897	47,819	0
11-4332	Fish & Wildlife Technician 2	PT	A	GP	Wrangell	200	9C	2.0		6,104	381	4,929	5,775	17,189	0
11-4340	Fish & Wildlife Technician 2	PT	A	GP	Wrangell	200	9B / C	5.0		14,864	985	13,680	14,802	44,331	0
11-4341	Fishery Biologist 1	PT	A	SS	Wrangell	600	14J	8.0		40,796	763	14,474	35,445	91,478	77,756
11-5005	Analyst/Programmer 5	FT	A	SS	Juneau	99	22O	5.5	*	61,046	842	0	33,125	95,013	0
11-5007	Fish & Wildlife Technician 2	PT	A	GP	Wrangell	200	9A	2.5		7,191	248	0	4,711	12,150	0
11-5018	Fish & Game Program Technician	FT	A	SS	Ketchikan	99	12S / T	12.0		72,534	1,015	1,031	49,620	124,200	63,342
11-5027	Administrative Assistant 2	FT	A	GP	Douglas	205	14J	12.0		63,102	2,177	0	42,971	108,250	0
11-5029	Fish & Game Program Technician	PT	A	GP	Yakutat	200	12A	3.0	**	10,316	356	0	8,669	19,341	19,341
11-5038	Fishery Biologist 3	FT	A	SS	Anchorage	200	18L	0.9	*	6,497	90	0	4,094	10,681	10,681
11-5069	Data Processing Technician 1	PT	A	GP	Juneau	205	13C	8.3	*	34,752	1,199	0	26,343	62,294	0
11-5076	Fishery Biologist 1	PT	A	GP	Douglas	205	14F / G	11.0		55,502	2,473	16,184	35,941	110,100	0
11-5139	Fish & Game Coordinator	FT	A	SS	Juneau	99	22Q	12.0		140,628	1,941	0	75,097	217,666	0
11-5157	Fishery Biologist 2	FT	A	SS	Douglas	205	16E / F	12.0		71,588	988	0	48,869	121,445	121,445
11-5198	Fishery Biologist 4	FT	A	SS	Ketchikan	99	20N / O	12.0		109,150	1,506	0	63,139	173,795	100,801
11-5202	Fishery Biologist 2	PT	A	SS	Sitka	205	16B / C	12.0		64,700	893	0	46,252	111,845	0
11-5236	Fish & Wildlife Technician 3	PT	A	GP	Ketchikan	200	11G / J	8.0		32,565	1,698	16,645	25,028	75,936	0
11-5238	Fish & Wildlife Technician 2	PT	A	GP	Sitka	205	9A	3.0		9,063	313	0	5,818	15,194	0
11-5242	Fish & Wildlife Technician 4	PT	A	GP	Petersburg	200	13C	9.5		37,127	1,429	4,283	30,772	73,611	16,931
11-5254	Fishery Biologist 2	PT	A	SS	Yakutat	200	16A / B	8.0		39,603	576	2,141	30,307	72,627	20,336
11-5279	Fish & Wildlife Technician 3	PT	A	GP	Douglas	205	11C	2.0		7,222	295	1,333	4,833	13,683	0
11-5281	Laboratory Technician	FT	A	GP	Anchorage	200	13F	1.4	*	6,076	210	0	4,525	10,811	0
11-5291	Fish & Wildlife Technician 2	PT	A	GP	Haines	200	9B / C	7.0		20,967	817	2,708	14,535	39,027	0
11-5306	Fish & Wildlife Technician 3	PT	A	GP	Juneau	205	11B	2.7	*	9,559	330	0	7,906	17,795	0
11-5332	Boat Officer 1	PT	A	GP	Petersburg	200	13C / D	8.0		31,611	1,747	19,043	31,909	84,310	81,781
11-5348	Fishery Biologist 2	PT	A	SS	Douglas	205	16B / C	12.0		59,690	824	0	44,349	104,863	0
11-5352	Fish & Wildlife Technician 3	PT	A	GP	Juneau	205	11J	2.3	*	9,830	339	0	5,555	15,724	0

Note: If a position is split, an asterisk (\*) will appear in the Split/Count column. If the split position is also counted in the component, two asterisks (\*\*) will appear in this column. [No valid job title] appearing in the Job Class Title indicates that the PCN has an invalid class code or invalid range for the class code effective date of this scenario.

**Personal Services Expenditure Detail**  
**Department of Fish and Game**

**Scenario:** FY2024 Governor (19867)  
**Component:** Southeast Region Fisheries Management (2167)  
**RDU:** Commercial Fisheries (143)

PCN	Job Class Title	Time Status	Retire Code	Barg Unit	Location	Salary Sched	Range / Step	Comp Months	Split / Count	Annual Salaries	COLA	Premium Pay	Annual Benefits	Total Costs	UGF Amount
11-5365	Fish & Wildlife Technician 2	PT	A	GP	Sitka	205	9B	1.0		3,112	107	0	1,974	5,193	0
11-5366	Fishery Biologist 2	FT	A	GP	Juneau	205	16J	8.5	*	51,465	1,775	0	33,009	86,249	0
11-5370	Fish & Wildlife Technician 2	PT	A	GP	Ketchikan	200	9B / C	3.0		9,085	326	364	5,965	15,740	11,018
11-6055	Fish & Game Program Technician	FT	A	GP	Craig	99	12O	4.0	**	21,047	796	2,039	15,103	38,985	38,985
11-7041	Fish & Wildlife Technician 3	PT	A	GP	Juneau	205	11A	3.2	*	10,910	376	0	9,211	20,497	0
11-7042	Fish & Wildlife Technician 2	PT	A	GP	Juneau	205	9A	0.2	*	604	21	0	546	1,171	0
11-7054	Biometrician 2	FT	A	GP	Juneau	205	19C / D	9.0	*	56,653	1,954	0	35,771	94,378	0
11-7055	Fish & Wildlife Technician 3	PT	A	GP	Juneau	205	11D	3.5	*	13,084	451	0	10,512	24,047	0
11-7080	Fisheries Geneticist 1	FT	A	GP	Anchorage	200	17E	1.8	*	10,155	350	0	6,708	17,213	17,213
													<b>Total Salary Costs:</b>	7,715,356	
													<b>Total COLA:</b>	200,252	
													<b>Total Premium Pay:</b>	700,469	
													<b>Total Benefits:</b>	5,265,015	
													<b>Total Pre-Vacancy:</b>	13,881,092	
													<b>Minus Vacancy Adjustment of 6.76%:</b>	(938,692)	
													<b>Total Post-Vacancy:</b>	12,942,400	
													<b>Plus Lump Sum Premium Pay:</b>	0	
													<b>Personal Services Line 100:</b>	12,942,400	

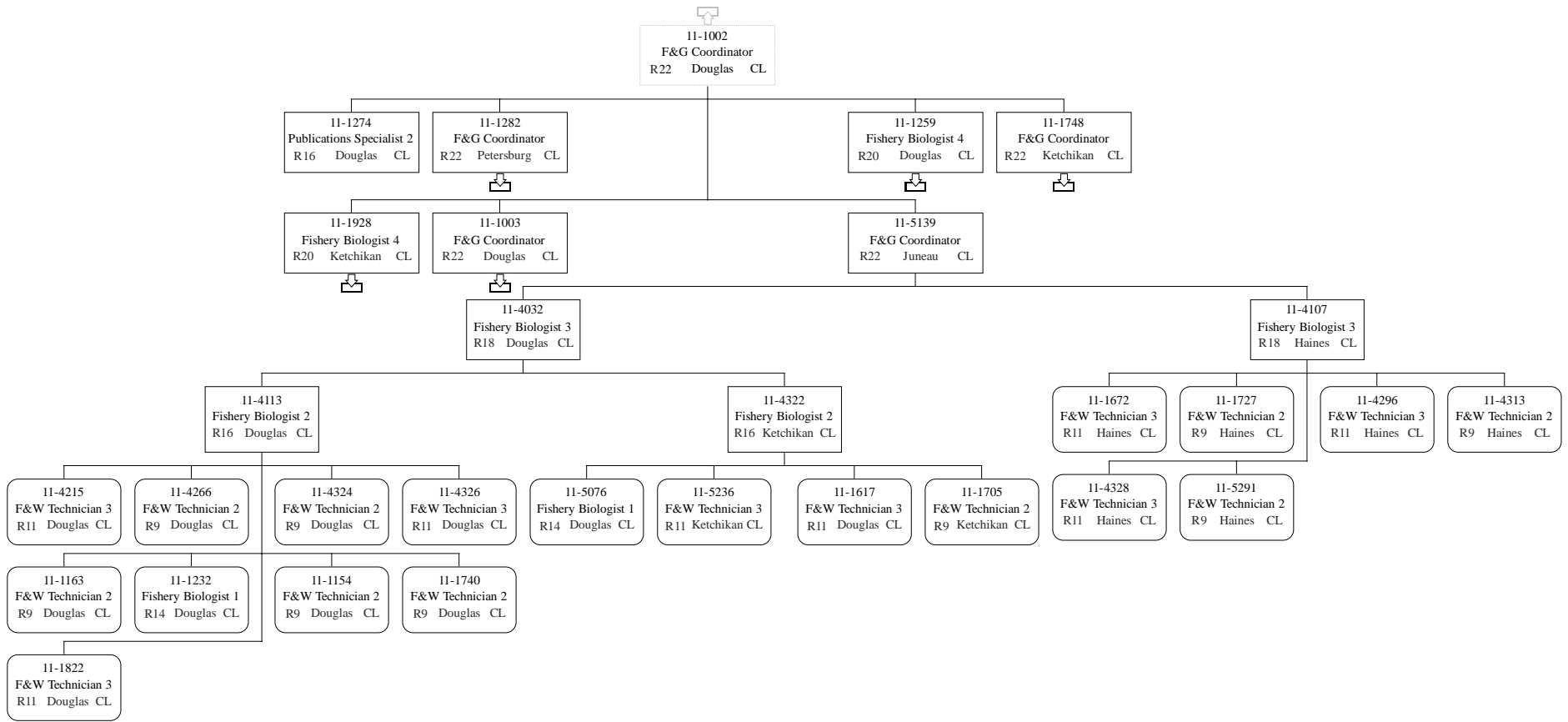
	Total Positions	New	Deleted
<b>Full Time Positions:</b>	65	0	0
<b>Part Time Positions:</b>	100	0	0
<b>Non Permanent Positions:</b>	0	0	0
<b>Positions in Component:</b>	165	0	0

**Total Component Months:** 1,366.3

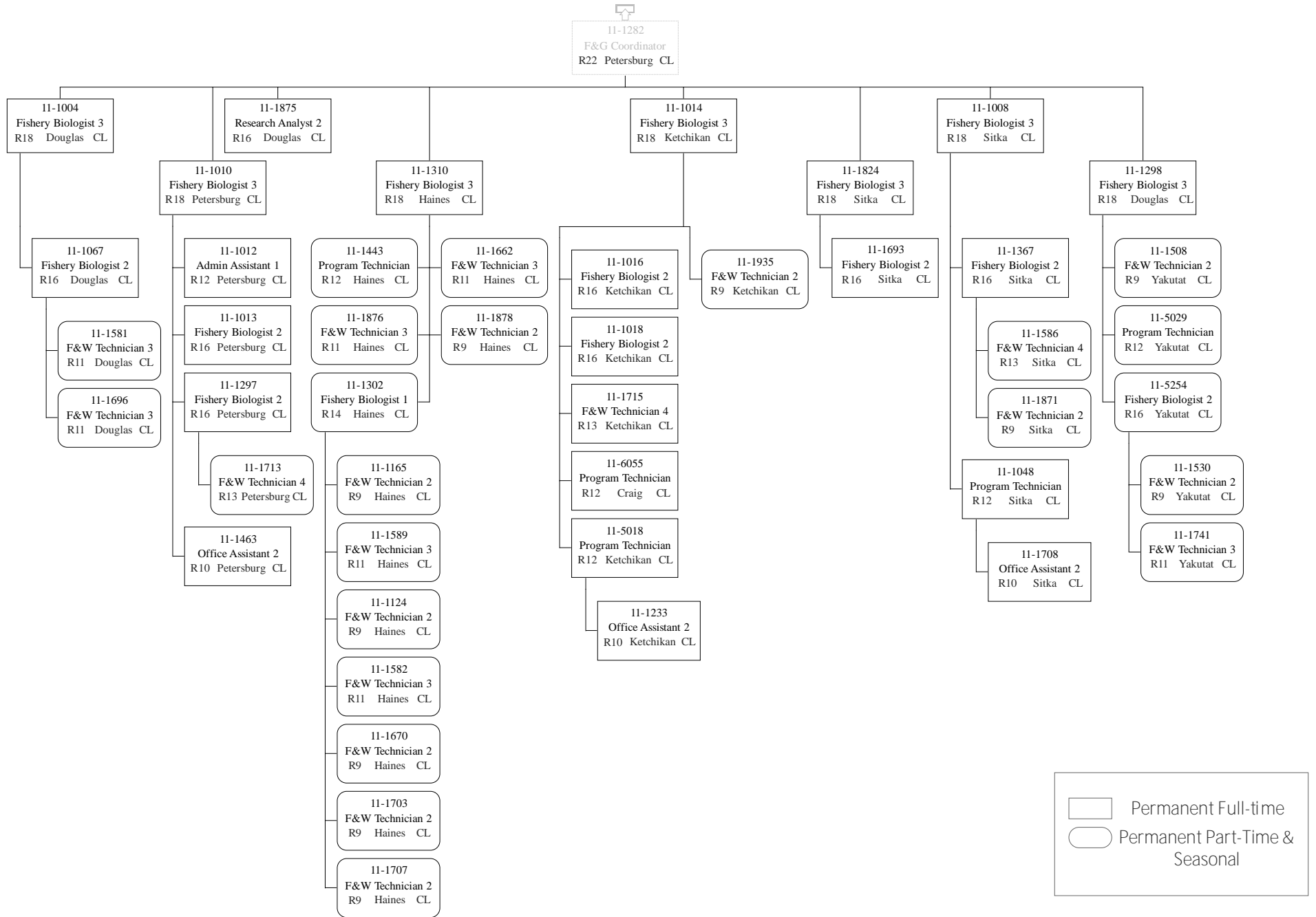
PCN Funding Sources:	Pre-Vacancy	Post-Vacancy	Percent
1002 Federal Receipts	4,854,473	4,526,195	34.97%
1003 General Fund Match	659,820	615,200	4.75%
1004 General Fund Receipts	6,451,700	6,015,412	46.48%
1005 General Fund/Program Receipts	45,893	42,790	0.33%
1024 Fish and Game Fund	25,389	23,672	0.18%
1061 Capital Improvement Project Receipts	26,403	24,618	0.19%
1108 Statutory Designated Program Receipts	1,077,621	1,004,748	7.76%
1109 Test Fisheries Receipts	126,391	117,844	0.91%
1201 Commercial Fisheries Entry Commission Receipts	613,402	571,922	4.42%
<b>Total PCN Funding:</b>	<b>13,881,092</b>	<b>12,942,400</b>	<b>100.00%</b>

Note: If a position is split, an asterisk (\*) will appear in the Split/Count column. If the split position is also counted in the component, two asterisks (\*\*) will appear in this column. [No valid job title] appearing in the Job Class Title indicates that the PCN has an invalid class code or invalid range for the class code effective date of this scenario.

Department of Fish & Game  
 2167 - Southeast Region Fisheries Management  
 FY2024 Governor Budget

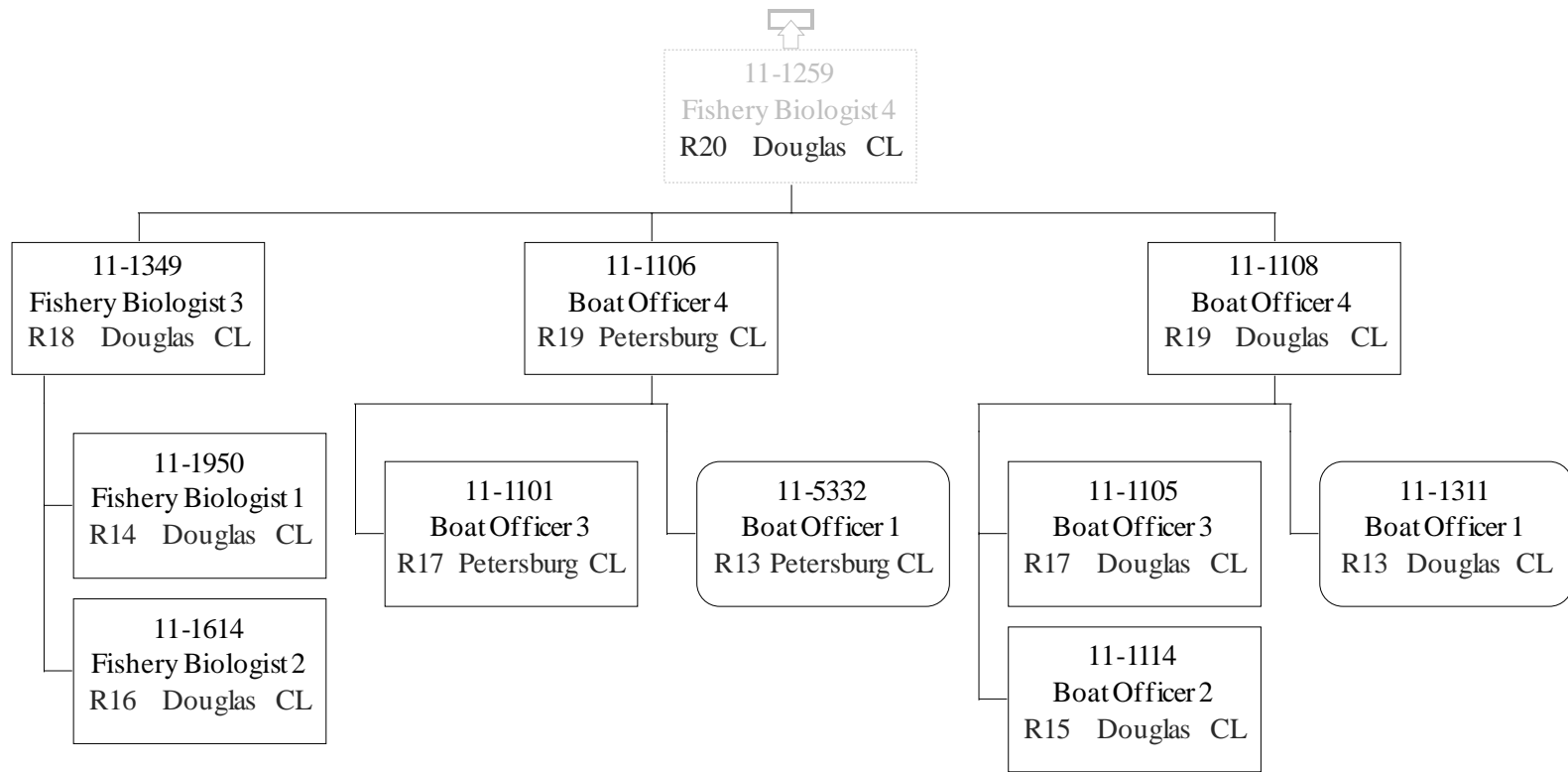


Department of Fish & Game  
 2167 - Southeast Region Fisheries Management  
 FY2024 Governor Budget



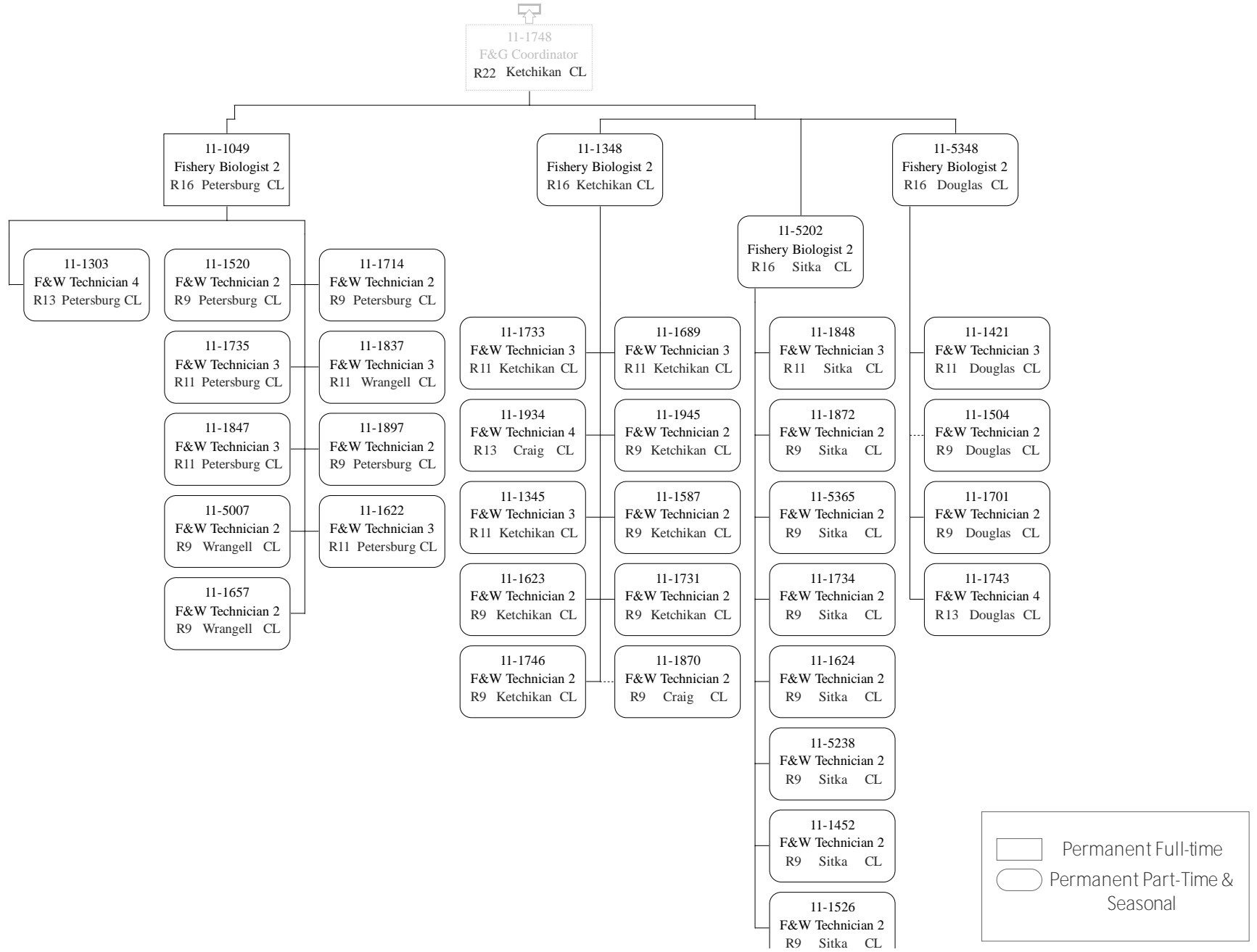
Permanent Full-time  
 Permanent Part-Time & Seasonal

Department of Fish & Game  
2167 - Southeast Region Fisheries Management  
FY2024 Governor Budget



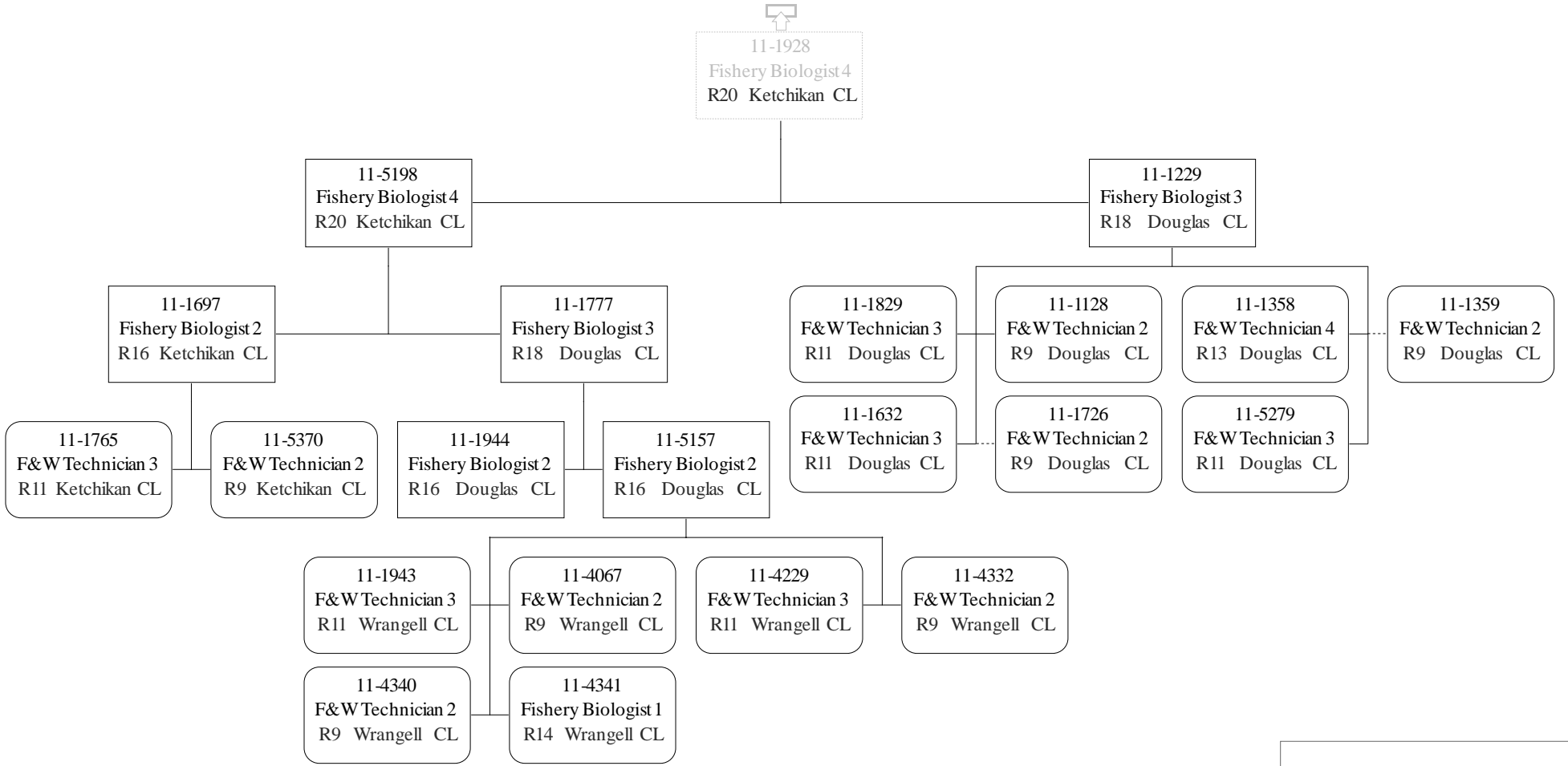


Department of Fish & Game  
 2167 - Southeast Region Fisheries Management  
 FY2024 Governor Budget



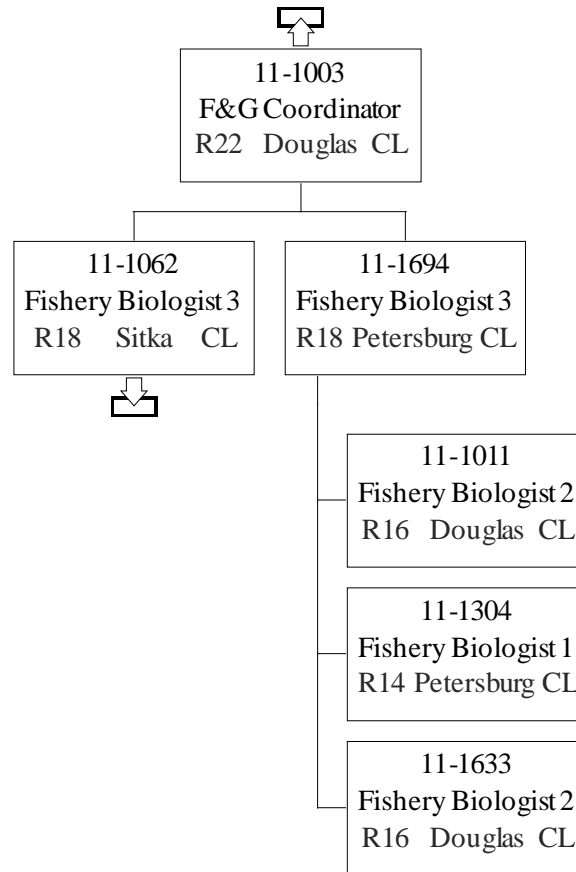
Permanent Full-time  
 Permanent Part-Time & Seasonal

Department of Fish & Game  
 2167 - Southeast Region Fisheries Management  
 FY2024 Governor Budget

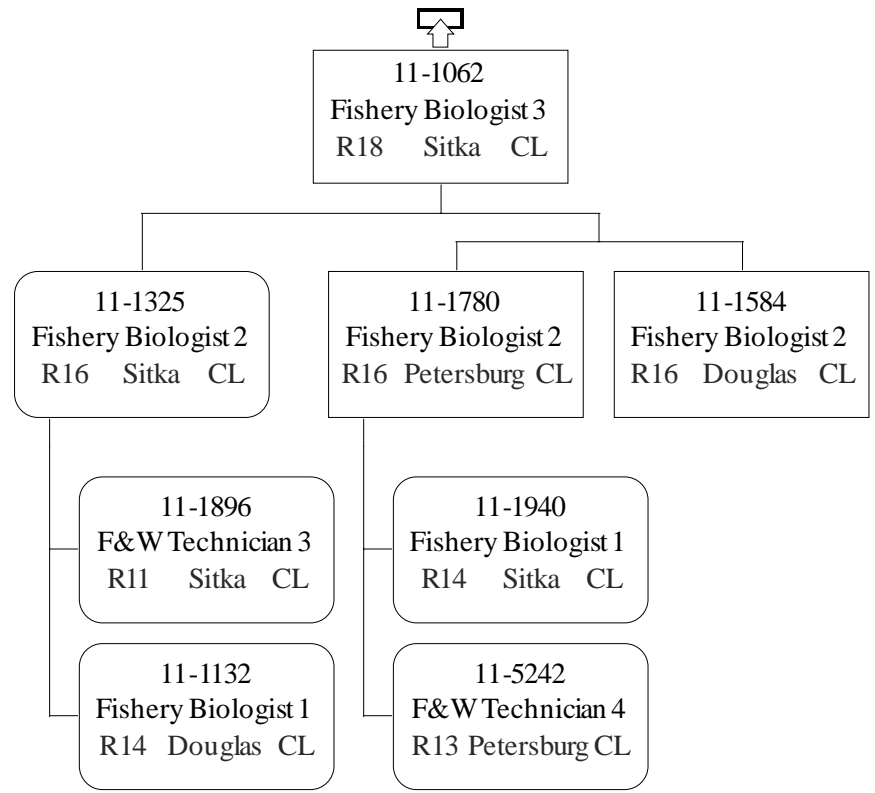


<span style="border: 1px solid black; display: inline-block; width: 20px; height: 10px;"></span>	Permanent Full-time
<span style="border: 1px solid black; border-radius: 10px; display: inline-block; width: 20px; height: 10px;"></span>	Permanent Part-Time & Seasonal

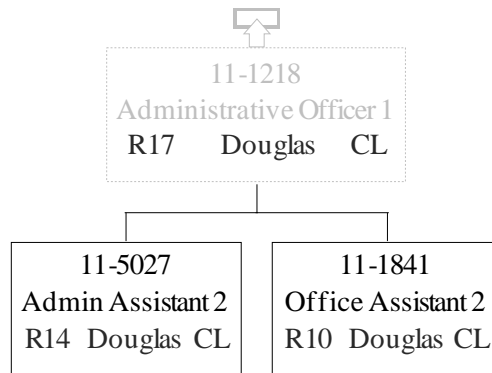
Department of Fish & Game  
2167 - Southeast Region Fisheries  
Management FY2024 Governor Budget



Department of Fish & Game  
2167 - Southeast Region Fisheries Management  
FY2024 Governor Budget



Department of Fish & Game  
2167 - Southeast Region Fisheries Management  
FY2024 Governor Budget



Department of Fish and Game  
2167 – Southeast Region Fisheries Management  
FY2024 Governor Budget

11-5157  
Fishery Biologist 2  
R16 Douglas CL

11-7002  
F&G Program Technician  
R12 Wrangell CL

11-1835  
Accounting Technician 3  
16 Douglas CL

11-1324  
Accounting Tech 1  
R12 Douglas CL

11-1951  
Accounting Clerk  
R10 Douglas CL

11-1129  
Analyst/Programmer 5  
R22 Juneau CL

11-1821  
Analyst/Programmer 4  
R20 Douglas CL