

# **State of Alaska FY2024 Governor's Operating Budget**

## **Department of Fish and Game Central Region Fisheries Management Component Budget Summary**

**Component: Central Region Fisheries Management**

**Contribution to Department's Mission**

The Central Region contributes to the department's mission by 1) ensuring the conservation of natural stocks of fish, shellfish, and aquatic plants based on scientifically sound assessments; 2) sustaining fisheries based on the control and regulation of harvests through responsive management systems; 3) increasing fishery harvests and harvest opportunities of fish, shellfish, and aquatic plants through the investigation of maximum sustained yield for individual and aggregate populations; 4) expanding fishery potential through identification of underutilized species/stocks of fish, shellfish, and aquatic plants; 5) maintaining and enhancing opportunities for public participation in the development of fishery management plans and harvest regulations; 6) developing and maintaining comprehensive databases on commercial, subsistence, and personal use harvests, and associated processing of fish, shellfish, and aquatic plants; 7) promoting public education on the conservation, production, and economic and social benefits of yields from fish, shellfish, and aquatic plants; and 8) providing data, expertise, and written and oral comment in the public regulatory process through the Alaska Board of Fisheries (BOF).

**Core Services**

- See RDU core services.

**Major Component Accomplishments in 2022**

See RDU level narrative.

**Key Component Challenges**

See RDU level narrative.

**Significant Changes in Results to be Delivered in FY2024**

See RDU level narrative.

**Statutory and Regulatory Authority**

AS 16.05  
5 AAC

**Contact Information**

**Contact:** Sam Rabung, Director  
**Phone:** (907) 465-6100  
**E-mail:** samuel.rabung@alaska.gov

Central Region Fisheries Management Personal Services Information				
Authorized Positions			Personal Services Costs	
	FY2023 Management Plan	FY2024 Governor		
Full-time	44	44	Annual Salaries	5,019,465
Part-time	126	126	COLA	136,104
Nonpermanent	0	0	Premium Pay	510,261
			Annual Benefits	3,594,444
			<i>Less 4.21% Vacancy Factor</i>	<i>(389,974)</i>
			Lump Sum Premium Pay	0
<b>Totals</b>	<b>170</b>	<b>170</b>	<b>Total Personal Services</b>	<b>8,870,300</b>

Position Classification Summary					
Job Class Title	Anchorage	Fairbanks	Juneau	Others	Total
Accounting Technician 1	1	0	0	0	1
Administrative Assistant 2	1	0	0	0	1
Administrative Officer 1	1	0	0	0	1
Analyst/Programmer 3	1	0	0	0	1
Analyst/Programmer 4	1	0	0	0	1
Boat Officer 1	0	0	0	2	2
Boat Officer 3	0	0	0	2	2
Fish & Game Coordinator	3	0	0	0	3
Fish & Game Program Technician	1	0	0	4	5
Fish & Wildlife Technician 2	0	0	0	88	88
Fish & Wildlife Technician 3	0	0	0	17	17
Fish & Wildlife Technician 4	0	0	0	1	1
Fishery Biologist 1	1	0	0	11	12
Fishery Biologist 2	2	0	0	7	9
Fishery Biologist 3	3	1	0	9	13
Fishery Biologist 4	1	0	0	1	2
Information Officer 2	1	0	0	0	1
Maint Gen Jrny	0	0	0	1	1
Office Assistant 1	0	0	0	2	2
Office Assistant 2	1	0	0	1	2
Publications Specialist 2	1	0	0	0	1
Research Analyst 1	0	0	0	1	1
Research Analyst 2	0	0	0	1	1
Vessel Technician	0	0	0	2	2
<b>Totals</b>	<b>19</b>	<b>1</b>	<b>0</b>	<b>150</b>	<b>170</b>

**Component Detail All Funds**  
**Department of Fish and Game**

**Component:** Central Region Fisheries Management (2168)  
**RDU:** Commercial Fisheries (143)

Non-Formula Component

	<b>FY2022 Actuals</b>	<b>FY2023 Conference Committee</b>	<b>FY2023 Authorized</b>	<b>FY2023 Management Plan</b>	<b>FY2024 Governor</b>	<b>FY2023 Management Plan vs FY2024 Governor</b>	
71000 Personal Services	8,802.5	8,682.5	8,682.5	8,682.5	8,870.3	187.8	2.2%
72000 Travel	79.4	59.9	59.9	106.7	106.7	0.0	0.0%
73000 Services	1,159.0	2,080.0	2,080.0	2,033.2	2,033.2	0.0	0.0%
74000 Commodities	546.2	633.5	633.5	633.5	633.5	0.0	0.0%
75000 Capital Outlay	88.1	78.2	78.2	78.2	78.2	0.0	0.0%
77000 Grants, Benefits	0.0	0.0	0.0	0.0	0.0	0.0	0.0%
78000 Miscellaneous	0.0	0.0	0.0	0.0	0.0	0.0	0.0%
<b>Totals</b>	<b>10,675.2</b>	<b>11,534.1</b>	<b>11,534.1</b>	<b>11,534.1</b>	<b>11,721.9</b>	<b>187.8</b>	<b>1.6%</b>
<b>Fund Sources:</b>							
1002 Fed Rcpts (Fed)	168.0	245.5	245.5	245.5	248.3	2.8	1.1%
1003 G/F Match (UGF)	278.2	276.8	276.8	276.8	281.5	4.7	1.7%
1004 Gen Fund (UGF)	8,713.9	8,872.2	8,872.2	8,872.2	9,028.0	155.8	1.8%
1005 GF/Prgm (DGF)	227.8	280.2	280.2	280.2	283.5	3.3	1.2%
1007 I/A Rcpts (Other)	70.3	95.4	95.4	95.4	95.7	0.3	0.3%
1061 CIP Rcpts (Other)	63.2	188.3	188.3	188.3	191.0	2.7	1.4%
1108 Stat Desig (Other)	445.4	853.0	853.0	853.0	862.3	9.3	1.1%
1109 Test Fish (DGF)	235.0	370.3	370.3	370.3	372.7	2.4	0.6%
1201 CFEC Rcpts (DGF)	473.4	352.4	352.4	352.4	358.9	6.5	1.8%
<b>Unrestricted General (UGF)</b>	<b>8,992.1</b>	<b>9,149.0</b>	<b>9,149.0</b>	<b>9,149.0</b>	<b>9,309.5</b>	<b>160.5</b>	<b>1.8%</b>
<b>Designated General (DGF)</b>	<b>936.2</b>	<b>1,002.9</b>	<b>1,002.9</b>	<b>1,002.9</b>	<b>1,015.1</b>	<b>12.2</b>	<b>1.2%</b>
<b>Other Funds</b>	<b>578.9</b>	<b>1,136.7</b>	<b>1,136.7</b>	<b>1,136.7</b>	<b>1,149.0</b>	<b>12.3</b>	<b>1.1%</b>
<b>Federal Funds</b>	<b>168.0</b>	<b>245.5</b>	<b>245.5</b>	<b>245.5</b>	<b>248.3</b>	<b>2.8</b>	<b>1.1%</b>
<b>Positions:</b>							
Permanent Full Time	43	43	43	44	44	0	0.0%
Permanent Part Time	125	124	124	126	126	0	0.0%
Non Permanent	0	0	0	0	0	0	0.0%

**Change Record Detail - Multiple Scenarios with Descriptions**  
**Department of Fish and Game**

**Component:** Central Region Fisheries Management (2168)  
**RDU:** Commercial Fisheries (143)

Scenario/Change Record Title	Trans Type	Totals	Personal Services	Travel	Services	Commodities	Capital Outlay	Grants, Benefits	Miscellaneous	Positions		NP
										PFT	PPT	
***** Changes From FY2023 Conference Committee To FY2023 Authorized *****												
<b>FY2023 Conference Committee</b>												
ConfCom		11,534.1	8,682.5	59.9	2,080.0	633.5	78.2	0.0	0.0	43	124	0
1002 Fed Rcpts		245.5										
1003 G/F Match		276.8										
1004 Gen Fund		8,872.2										
1005 GF/Prgm		280.2										
1007 I/A Rcpts		95.4										
1061 CIP Rcpts		188.3										
1108 Stat Desig		853.0										
1109 Test Fish		370.3										
1201 CFEC Rcpts		352.4										
<b>Subtotal</b>		<b>11,534.1</b>	<b>8,682.5</b>	<b>59.9</b>	<b>2,080.0</b>	<b>633.5</b>	<b>78.2</b>	<b>0.0</b>	<b>0.0</b>	<b>43</b>	<b>124</b>	<b>0</b>
***** Changes From FY2023 Authorized To FY2023 Management Plan *****												
<b>Transfer Fish &amp; Wildlife Technician 3 (11-1669) from Arctic-Yukon-Kuskokwim Region Fisheries Management</b>												
PosAdj		0.0	0.0	0.0	0.0	0.0	0.0	0.0	0.0	0	1	0
Transfer a part-time Fish & Wildlife Technician 3 (11-1669), range 11, located in Soldotna, from the Arctic-Yukon-Kuskokwim (AYK) Region Fisheries Management component to the Central Region Fisheries Management component to meet project needs for the Bristol Bay salmon fishery. The remaining AYK staff are sufficient to accommodate the anticipated workload.												
Department of Fish & Game positions are transferred statewide as needed to accommodate priority surveys and assessments required to accomplish the department's mission.												
<b>Transfer Fish &amp; Wildlife Technician 4 (11-1480) from Arctic-Yukon-Kuskokwim Region Fisheries Management</b>												
PosAdj		0.0	0.0	0.0	0.0	0.0	0.0	0.0	0.0	0	1	0
Transfer a part-time Fish & Wildlife Technician 4 (11-1480), located in Anchorage, from the Arctic-Yukon-Kuskowkim (AYK) Fisheries Management component to the Central Region Fisheries Management component and change to a Fishery Biologist 1, range 14, due to conduct research on groundfish in Central Region. The remaining AYK staff are sufficient to accommodate the anticipated workload.												
Department of Fish & Game positions are transferred statewide as needed to accommodate priority surveys and assessments required to accomplish the department's mission.												
<b>Align Authority with Anticipated Expenditures</b>												
LIT		0.0	0.0	46.8	-46.8	0.0	0.0	0.0	0.0	0	0	0
Transfer authority from services to travel to align with anticipated expenditures.												
<b>Transfer Administrative Officer 2 (11-1839) from Arctic-Yukon-Kuskokwim Region Fisheries Management for Reorganization</b>												

**Change Record Detail - Multiple Scenarios with Descriptions**  
**Department of Fish and Game**

**Component:** Central Region Fisheries Management (2168)  
**RDU:** Commercial Fisheries (143)

Scenario/Change Record Title	Trans Type	Totals	Personal Services	Travel	Services	Commodities	Capital Outlay	Grants, Benefits	Miscellaneous	Positions		NP
										PFT	PPT	
	PosAdj	0.0	0.0	0.0	0.0	0.0	0.0	0.0	0.0	1	0	0
Transfer full time Administrative Officer 2 (11-1839), range 19, located in Anchorage, from the Arctic-Yukon-Kuskokwim Region Fisheries Management component to the Central Region Fisheries Management component and change to Administrative Officer 1, range 17, for Administrative Reorganization.												
Department of Fish & Game positions are transferred statewide as needed to accommodate priority surveys and assessments required to accomplish the department's mission.												
<b>Subtotal</b>		<b>11,534.1</b>	<b>8,682.5</b>	<b>106.7</b>	<b>2,033.2</b>	<b>633.5</b>	<b>78.2</b>	<b>0.0</b>	<b>0.0</b>	<b>44</b>	<b>126</b>	<b>0</b>
***** <b>Changes From FY2023 Management Plan To FY2024 Governor</b> *****												
<b>Reverse Maintain Bristol Bay Watershed Projects with UGF Funding (FY22-FY23)</b>												
	OTI	-800.0	-450.0	-14.8	-275.2	-60.0	0.0	0.0	0.0	0	0	0
1004 Gen Fund		-800.0										
Reverse temporary increment for FY2022-2023 which replaced \$800.0 statutory designated program receipts with general fund.												
<b>FY2024 PERS Rate Adjustment</b>												
	SalAdj	16.6	16.6	0.0	0.0	0.0	0.0	0.0	0.0	0	0	0
1002 Fed Rcpts		0.2										
1003 G/F Match		0.4										
1004 Gen Fund		13.8										
1005 GF/Prgm		0.3										
1061 CIP Rcpts		0.2										
1108 Stat Desig		0.8										
1109 Test Fish		0.2										
1201 CFEC Rcpts		0.7										
FY2024 PERS rate adjustment to 25.10%: \$16.6												
<b>FY2024 Salary and Health Insurance Increases</b>												
	SalAdj	171.2	171.2	0.0	0.0	0.0	0.0	0.0	0.0	0	0	0
1002 Fed Rcpts		2.6										
1003 G/F Match		4.3										
1004 Gen Fund		142.0										
1005 GF/Prgm		3.0										
1007 I/A Rcpts		0.3										
1061 CIP Rcpts		2.5										
1108 Stat Desig		8.5										
1109 Test Fish		2.2										
1201 CFEC Rcpts		5.8										

**Change Record Detail - Multiple Scenarios with Descriptions**  
**Department of Fish and Game**

**Component:** Central Region Fisheries Management (2168)  
**RDU:** Commercial Fisheries (143)

Scenario/Change Record Title	Trans Type	Totals	Personal Services	Travel	Services	Commodities	Capital Outlay	Grants, Benefits	Miscellaneous	Positions		NP
										PFT	PPT	
FY2024 Salary and Health Insurance Increases: \$171.2												
FY2024 GGU cost of living increase 2.5%: \$92.0												
FY2024 LTC cost of living increase 3.25%: \$2.8												
FY2024 SU cost of living increase 1%: \$36.1												
FY2024 AlaskaCare insurance from \$1,685 to \$1,793 per member per month.: \$36.9												
FY2024 GGU health insurance increase from \$1,567.50 to \$1,573.50 per member per month.: \$3.1												
FY2024 LTC health insurance increase from \$1,580 to \$1,605 per member per month.: \$0.3												
<b>Restore and Maintain Bristol Bay Science and Research Institute Watershed Projects</b>												
1004 Gen Fund	Inc	800.0	450.0	14.8	275.2	60.0	0.0	0.0	0.0	0	0	0
<p>During the FY2022 budget cycle, the fund source for many of the Bristol Bay projects was changed from statutory designated program receipts to general fund. The temporary increment was designated for FY2022 – FY2023. These projects are continuing, and general fund authority is needed in FY2024 to support these mission critical projects. Discontinuing these projects would negatively impact the management and assessment projects of the Bristol Bay fisheries resulting in more conservative management.</p> <p>Alaska Department of Fish &amp; Game/Bristol Bay Science and Research Institute projects include:            Nushagak Sonar, June 1-July 30            Port Moller            Kvichak In-river Test Fish            Test Fish Coordinator (Fish Biologist 2)            Egegik In-river Test Fish            Ugashik In-river Test Fish            Alagnak Tower            Tower Extensions</p>												
<b>Totals</b>		<b>11,721.9</b>	<b>8,870.3</b>	<b>106.7</b>	<b>2,033.2</b>	<b>633.5</b>	<b>78.2</b>	<b>0.0</b>	<b>0.0</b>	<b>44</b>	<b>126</b>	<b>0</b>

**Line Item Detail (1676)**  
**Department of Fish and Game**  
**Travel**

**Component:** Central Region Fisheries Management (2168)

Line Number	Line Name		FY2022 Actuals	FY2023 Management Plan	FY2024 Governor
2000	Travel		79.4	106.7	106.7
Object Class	Servicing Agency	Explanation	FY2022 Actuals	FY2023 Management Plan	FY2024 Governor
<b>2000 Travel Detail Totals</b>			<b>79.4</b>	<b>106.7</b>	<b>106.7</b>
2000	In-State Employee Travel	In-state employee travel including transportation and lodging	70.9	95.2	95.2
2002	Out of State Employee Travel	Out-of-state employee travel including transportation and lodging	0.4	0.5	0.5
2005	Moving Costs	Move costs including transferring household goods, transportation and lodging	8.1	11.0	11.0



**Line Item Detail (1676)**  
**Department of Fish and Game**  
**Services**

**Component:** Central Region Fisheries Management (2168)

Line Number	Line Name		FY2022 Actuals	FY2023 Management Plan	FY2024 Governor
3000	Services		1,159.0	2,033.2	2,033.2
Object Class	Servicing Agency	Explanation	FY2022 Actuals	FY2023 Management Plan	FY2024 Governor
<b>3000 Services Detail Totals</b>			<b>1,159.0</b>	<b>2,033.2</b>	<b>2,033.2</b>
3000	Education Services	Training/conference fees and memberships	10.0	22.9	22.9
3001	Financial Services	Management/consulting services and interest expenses HB39 - Bankcard Service Fees Reimbursed	0.1	0.2	0.2
3003	Information Technology	Information technology training and consulting services and software licensing and maintenance	6.7	15.5	15.5
3004	Telecommunications	Television, long distance, data/network and cell phone services	103.4	124.0	148.9
3006	Delivery Services	Freight and postage	49.7	112.7	112.7
3008	Utilities	Electric, water, sewage, disposal and heating services	117.0	140.4	168.5
3009	Structure/Infrastructure/Land	Appraisal, architect, engineer services and structure/land maintenance and rentals	90.8	100.8	110.8
3010	Equipment/Machinery	Equipment rental, maintenance services and equipment operator charges	32.7	75.4	75.4
3011	Other Services	Printing, copy services, transportation and consulting services. Environmental and economic development fees	656.7	1,229.8	1,166.8
3037	State Equipment Fleet	State Equipment Fleet	91.9	211.5	211.5

**Line Item Detail (1676)**  
**Department of Fish and Game**  
**Commodities**

**Component:** Central Region Fisheries Management (2168)

Line Number	Line Name		FY2022 Actuals	FY2023 Management Plan	FY2024 Governor
4000	Commodities		546.2	633.5	633.5
Object Class	Servicing Agency	Explanation	FY2022 Actuals	FY2023 Management Plan	FY2024 Governor
<b>4000 Commodities Detail Totals</b>			<b>546.2</b>	<b>633.5</b>	<b>633.5</b>
4000	Business	Books, furniture, tools, business supplies and information technology equipment <\$5,000	160.1	185.7	185.7
4002	Household/Institutional	Landscaping, food, and cleaning supplies	116.5	135.1	135.1
4003	Scientific and Medical	Instruments, lab and non-lab supplies (Scientific and Medical)	64.0	74.2	74.2
4004	Safety	Firearms, ammunition, and other safety supplies	15.3	17.8	17.8
4005	Building Materials	Screws, lumber, nuts, bolts, and other building materials	26.5	30.7	30.7
4011	Electrical	Key-card readers, bulbs, batteries, and other electrical supplies	3.1	3.5	3.5
4012	Plumbing	Heaters, faucets, tubing, and other plumbing supplies	0.4	0.4	0.4
4013	Lube Oils/Grease/Solvents	Marine and motor oil, fuel stabilizer, and other lube oils, grease and solvents	4.3	5.0	5.0
4014	Bottled Gas	Propane, oxygen, and other bottled gases	0.3	0.3	0.3
4015	Parts and Supplies	Parts and supplies	57.5	66.6	66.6
4016	Paint/Preservatives	Paint and preservatives	1.6	1.9	1.9
4017	Sand	Sand Supplies	0.5	0.6	0.6
4018	Surface Chemicals	Surface Chemicals	0.2	0.2	0.2
4019	Small Tools/Minor Equipment	Flat sockets, drill bits, hooks,	10.9	12.7	12.7

**Line Item Detail (1676)**  
**Department of Fish and Game**  
**Commodities**

**Component:** Central Region Fisheries Management (2168)

Object Class	Servicing Agency	Explanation	FY2022 Actuals	FY2023 Management Plan	FY2024 Governor
<b>4000 Commodities Detail Totals</b>			<b>546.2</b>	<b>633.5</b>	<b>633.5</b>
		hammers, and other small tools			
4020	Equipment Fuel	Equipment fuel	85.0	98.8	98.8

**Line Item Detail (1676)**  
**Department of Fish and Game**  
**Capital Outlay**

**Component:** Central Region Fisheries Management (2168)

Line Number	Line Name		FY2022 Actuals	FY2023 Management Plan	FY2024 Governor
5000	Capital Outlay		88.1	78.2	78.2
Object Class	Servicing Agency	Explanation	FY2022 Actuals	FY2023 Management Plan	FY2024 Governor
<b>5000 Capital Outlay Detail Totals</b>			<b>88.1</b>	<b>78.2</b>	<b>78.2</b>
5002	Structures and Infrastructure	Structures and infrastructure supplies	11.0	12.6	12.6
5004	Equipment	Automobile and marine equipment	77.1	65.6	65.6

**Revenue Detail (1681)**  
**Department of Fish and Game**

**Component:** Central Region Fisheries Management (2168)

Revenue Type (OMB Fund Code) Revenue Source	Component	Comment	FY2022 Actuals	FY2023 Management Plan	FY2024 Governor
<b>5002 Fed Rcpts (1002 Fed Rcpts)</b>			<b>168.0</b>	<b>245.5</b>	<b>248.3</b>
5003 Federal - Indirect Recovery		Federal indirect revenue carryforward	1.1	1.1	1.1
5010 Federal Natural Resources - Miscellaneous Grants		Federal receipts are primarily from the National Marine Fisheries Service (NOAA)	166.9	244.4	247.2
<b>5005 GF/Prgm (1005 GF/Prgm)</b>			<b>227.8</b>	<b>280.2</b>	<b>283.5</b>
5101 Program Receipts Public Protection - Licenses and Permits		Revenue from the sale of commercial crew licenses	227.4	280.2	283.5
5125 Program Receipts - Prior Year Reimbursement Recovery		Prior-year recovery	0.4	0.0	0.0
<b>5007 I/A Rcpts (1007 I/A Rcpts)</b>			<b>70.3</b>	<b>95.4</b>	<b>95.7</b>
5301 Inter-Agency Receipts		RSA - Alaska Energy Authority (AEA) Red Lake Video Weir, additional projects to be determined	13.0	62.2	62.5
5301 Inter-Agency Receipts	FishGm - AYK Region Fisheries Mgmt. (2169)	RSA - Juvenile Chinook Salmon Surface Trawl Survey	36.9	0.0	0.0
5301 Inter-Agency Receipts	FishGm - Sport Fisheries (464)	RSA - Cordova Chinook Sampling	8.4	15.0	15.0
5301 Inter-Agency Receipts	PubSaf - Department-wide	RSA - King Salmon Shared Office Space, Odiak Park Warehouse Shared Lease Costs	12.0	18.2	18.2
<b>5061 CIP Rcpts (1061 CIP Rcpts)</b>			<b>63.2</b>	<b>188.3</b>	<b>191.0</b>
5351 Capital Improvement Project Inter-Agency		Receipts for personal services associated with capital funded projects	63.2	188.3	191.0
<b>5108 Stat Desig (1108 Stat Desig)</b>			<b>445.4</b>	<b>853.0</b>	<b>862.3</b>
5201 Statutory Dsgntd Prgrm Rcpts Pblc Prtctn - Permits and Fees		Buoy tag fees	10.0	10.8	10.8
5206 Statutory Designated Program Receipts - Contracts		Receipts from a variety of outside agencies including but not limited to: Bristol Bay Science and	435.4	842.2	851.5

**Revenue Detail (1681)**  
**Department of Fish and Game**

**Component:** Central Region Fisheries Management (2168)

Revenue Type (OMB Fund Code) Revenue Source	Component	Comment	FY2022 Actuals	FY2023 Management Plan	FY2024 Governor
		Research Institute, Cook Inlet Aquaculture Association, Prince William Sounds Science Center			
<b>5109 Test Fish (1109 Test Fish)</b>			<b>384.0</b>	<b>370.3</b>	<b>372.7</b>
5401 Test Fisheries Receipts		Revenue received from the sale of fish	384.0	370.3	372.7
<b>5201 CFEC Rcpts (1201 CFEC Rcpts)</b>			<b>473.4</b>	<b>352.4</b>	<b>358.9</b>
5406 Commercial Fisheries Entry Commission Receipts		Revenue transferred from the Commercial Fisheries Entry Commission	473.4	352.4	358.9
<b>6003 G/F Match (1003 G/F Match)</b>			<b>0.2</b>	<b>0.0</b>	<b>0.0</b>
6102 Match - Prior Year Reimbursement Recovery		Prior-year recovery	0.2	0.0	0.0
<b>6004 Gen Fund (1004 Gen Fund)</b>			<b>1.6</b>	<b>0.0</b>	<b>0.0</b>
6046 General Fund - Prior Year Reimbursement Recovery		Prior-year recovery	1.6	0.0	0.0

**Personal Services Expenditure Detail**  
**Department of Fish and Game**

**Scenario:** FY2024 Governor (19867)  
**Component:** Central Region Fisheries Management (2168)  
**RDU:** Commercial Fisheries (143)

PCN	Job Class Title	Time Status	Retire Code	Barg Unit	Location	Salary Sched	Range / Step	Comp Months	Split / Count	Annual Salaries	COLA	Premium Pay	Annual Benefits	Total Costs	UGF Amount
11-1019	Fishery Biologist 3	FT	A	SS	Soldotna	200	18F / J	12.0		79,198	1,093	0	51,760	132,051	132,051
11-1020	Fish & Game Coordinator	FT	A	SS	Anchorage	200	22N	12.0		130,397	1,799	0	71,210	203,406	203,406
11-1022	Fishery Biologist 4	FT	A	SS	Soldotna	200	20C	12.0		81,162	1,120	0	52,506	134,788	134,788
11-1024	Fishery Biologist 3	FT	A	SS	Cordova	99	18N / O	12.0		104,509	1,442	0	61,376	167,327	167,327
11-1026	Fish & Game Program Technician	FT	A	GP	Cordova	99	12P	12.0		72,035	2,485	0	46,365	120,885	120,885
11-1027	Fishery Biologist 3	FT	A	SS	Homer	99	18O	12.0		96,301	1,394	4,747	60,061	162,503	162,503
11-1028	Fishery Biologist 3	FT	A	SS	Homer	99	18R	12.0		106,006	1,480	1,265	62,425	171,176	171,176
11-1039	Fishery Biologist 3	FT	A	SS	Dillingham	99	18P / Q	12.0		139,352	1,923	0	74,612	215,887	215,887
11-1041	Boat Officer 1	PT	A	GP	Homer	200	13A	6.0		21,977	839	2,353	18,742	43,911	43,911
11-1042	Fishery Biologist 3	FT	A	SS	Anchorage	200	18M	12.0		89,440	1,324	6,500	58,120	155,384	155,384
11-1043	Fishery Biologist 2	FT	A	SS	Soldotna	200	16F / J	12.0		69,507	979	1,435	48,623	120,544	118,133
11-1054	Administrative Assistant 2	FT	A	SS	Anchorage	600	14M / N	12.0		69,009	952	0	47,889	117,850	117,850
11-1055	Information Officer 2	FT	A	GP	Anchorage	200	17A / B	6.0	**	29,659	1,023	0	20,767	51,449	51,449
11-1063	Fishery Biologist 2	FT	A	SS	Anchorage	200	16B / C	12.0		60,113	829	0	44,510	105,452	105,452
11-1072	Fish & Game Program Technician	FT	A	GP	Dillingham	99	12P	12.0		88,904	3,096	855	53,098	145,953	145,953
11-1073	Fish & Game Program Technician	FT	A	GP	Homer	200	12D / E	12.0		45,872	1,610	801	36,730	85,013	85,013
11-1075	Fishery Biologist 3	FT	A	SS	Anchorage	200	18F	12.0		78,707	1,190	7,547	54,441	141,885	141,885
11-1100	Fishery Biologist 4	FT	A	SS	Anchorage	200	20C / D	12.0		83,258	1,149	0	53,302	137,709	0
11-1102	Vessel Technician	PT	A	GP	Homer	200	16K	11.0		65,494	2,440	5,224	44,281	117,439	117,439
11-1103	Boat Officer 3	FT	A	SS	Homer	200	17C / D	12.0		66,901	1,017	6,787	49,667	124,372	124,372
11-1109	Boat Officer 3	FT	A	SS	Cordova	99	17N / O	12.0		105,292	1,976	37,937	76,085	221,290	203,587
11-1113	Vessel Technician	PT	A	GP	Cordova	211	16D / E	11.0		61,103	2,931	23,865	49,695	137,594	127,962
11-1119	Fish & Wildlife Technician 2	PT	A	GP	King Salmon	250	9C	1.7		7,782	438	4,901	7,510	20,631	20,631
11-1177	Fish & Wildlife Technician 3	PT	A	GP	Soldotna	200	11A	4.0		12,987	469	599	11,494	25,549	25,549
11-1178	Fish & Wildlife Technician 3	PT	A	GP	Soldotna	200	11E	4.6		16,849	687	3,076	14,852	35,464	0
11-1179	Fish & Wildlife Technician 2	PT	A	GP	Soldotna	200	9A	1.7		4,890	230	1,778	5,225	12,123	12,123
11-1180	Fish & Wildlife Technician 2	PT	A	GP	Soldotna	200	9C / D	2.5		7,755	313	1,323	7,407	16,798	16,798
11-1181	Fish & Wildlife Technician 2	PT	A	GP	Soldotna	200	9A	2.0		5,753	248	1,433	5,896	13,330	0
11-1182	Fish & Wildlife Technician 2	PT	A	GP	Soldotna	200	9A	1.7		4,890	239	2,045	5,326	12,500	12,500
11-1183	Fish & Wildlife Technician 2	PT	A	GP	Soldotna	200	9C	2.0		6,104	249	1,126	5,913	13,392	13,392
11-1184	Fish & Wildlife Technician 2	PT	A	GP	Soldotna	200	9B	2.0		5,928	241	1,067	5,824	13,060	13,060
11-1210	Fishery Biologist 3	FT	A	SS	Cordova	211	18C	11.9	**	78,759	1,087	0	51,413	131,259	131,259
11-1211	Fish & Game Coordinator	FT	A	SS	Anchorage	99	22N	12.0		121,678	1,679	0	67,898	191,255	191,255
11-1231	Fishery Biologist 3	FT	A	SS	Homer	99	18Q / R	12.0		105,308	1,711	18,707	68,786	194,512	177,006
11-1255	Fishery Biologist 3	FT	A	SS	Soldotna	200	18P / Q	12.0		101,650	1,403	0	60,289	163,342	163,342
11-1258	Fishery Biologist 3	FT	A	SS	Homer	200	18F	12.0		78,707	1,240	11,159	55,813	146,919	136,635

Note: If a position is split, an asterisk (\*) will appear in the Split/Count column. If the split position is also counted in the component, two asterisks (\*\*) will appear in this column. [No valid job title] appearing in the Job Class Title indicates that the PCN has an invalid class code or invalid range for the class code effective date of this scenario.

**Personal Services Expenditure Detail**  
**Department of Fish and Game**

**Scenario:** FY2024 Governor (19867)  
**Component:** Central Region Fisheries Management (2168)  
**RDU:** Commercial Fisheries (143)

PCN	Job Class Title	Time Status	Retire Code	Barg Unit	Location	Salary Sched	Range / Step	Comp Months	Split / Count	Annual Salaries	COLA	Premium Pay	Annual Benefits	Total Costs	UGF Amount
11-1261	Fishery Biologist 3	FT	A	SS	Anchorage	200	18K	12.0		83,907	1,253	6,900	56,170	148,230	148,230
11-1270	Fishery Biologist 2	FT	A	SS	Soldotna	200	16B / C	12.0		61,404	847	0	45,000	107,251	107,251
11-1278	Fishery Biologist 1	PT	P	GP	Soldotna	200	14M	4.5	**	24,804	877	611	16,780	43,072	43,072
11-1279	Publications Specialist 2	FT	A	GP	Anchorage	200	16N / O	6.0	**	40,173	1,386	0	24,761	66,320	66,320
11-1281	Fish & Game Coordinator	FT	A	SS	Anchorage	200	22L	12.0		113,006	1,559	0	64,604	179,169	0
11-1286	Fish & Wildlife Technician 2	PT	A	GP	Cordova	211	9B	2.0		6,581	304	2,217	6,509	15,611	0
11-1295	Fish & Wildlife Technician 2	PT	A	GP	Cordova	211	9B	4.0		13,163	487	941	11,691	26,282	26,282
11-1305	Office Assistant 1	PT	A	GP	Cordova	211	8C / D	6.0		19,354	721	1,532	17,434	39,041	34,747
11-1318	Fish & Wildlife Technician 2	PT	A	GP	Soldotna	200	9B	1.5		4,446	169	465	4,241	9,321	9,321
11-1323	Fish & Game Program Technician	FT	A	GP	Soldotna	200	12N / O	12.0		59,799	2,063	0	41,716	103,578	103,578
11-1330	Fish & Wildlife Technician 2	PT	A	GP	Soldotna	200	9A / B	1.5		4,446	173	574	4,282	9,475	9,475
11-1331	Boat Officer 1	PT	A	GP	Cordova	211	13D	6.0		26,920	1,594	19,286	27,053	74,853	66,619
11-1333	Fishery Biologist 2	FT	A	SS	Soldotna	200	16C	12.0		61,755	852	0	45,133	107,740	107,740
11-1335	Fish & Wildlife Technician 2	PT	A	GP	Soldotna	200	9B	1.5		4,446	173	574	4,282	9,475	9,475
11-1336	Fish & Wildlife Technician 2	PT	A	GP	Soldotna	200	9B	1.5		4,446	173	574	4,282	9,475	9,475
11-1337	Fishery Biologist 2	FT	A	SS	Cordova	211	16D	11.9	**	71,267	983	0	48,566	120,816	120,816
11-1341	Fish & Wildlife Technician 2	PT	A	GP	Dillingham	237	9B	0.7		2,843	132	974	2,558	6,507	6,507
11-1346	Fishery Biologist 1	PT	A	GP	Cordova	211	14E	3.5	**	17,762	669	1,640	12,912	32,983	32,983
11-1363	Fish & Wildlife Technician 2	PT	A	GP	Soldotna	200	9B	2.0		5,928	254	1,422	5,959	13,563	13,563
11-1368	Fish & Wildlife Technician 2	PT	A	GP	Soldotna	200	9B / C	1.5		4,578	183	732	4,392	9,885	9,885
11-1369	Fish & Wildlife Technician 2	PT	A	GP	King Salmon	250	9B	1.5		6,669	372	4,102	6,467	17,610	17,610
11-1371	Fish & Wildlife Technician 2	PT	A	GP	Dillingham	237	9B	1.6		6,497	370	4,233	6,609	17,709	17,709
11-1372	Fish & Wildlife Technician 2	PT	A	GP	Soldotna	200	9B	1.5		4,446	173	574	4,282	9,475	9,475
11-1374	Fish & Wildlife Technician 2	PT	A	GP	Soldotna	200	9B	3.0		8,892	333	766	8,419	18,410	18,410
11-1378	Fishery Biologist 1	PT	A	GP	Dillingham	237	14G	3.0		19,749	755	2,126	13,060	35,690	35,690
11-1381	Fishery Biologist 1	PT	A	GP	Soldotna	99	14M / N	6.1		35,125	1,250	1,122	23,428	60,925	54,833
11-1384	Fish & Wildlife Technician 2	PT	A	GP	Cordova	211	9D	2.5		8,718	374	2,124	8,077	19,293	14,856
11-1385	Fish & Wildlife Technician 3	PT	A	GP	King Salmon	250	11F	0.8		4,531	248	2,666	4,001	11,446	11,446
11-1388	Fish & Wildlife Technician 4	PT	A	GP	King Salmon	250	13G	4.0		26,930	1,143	6,214	18,924	53,211	53,211
11-1389	Fish & Wildlife Technician 2	PT	A	GP	King Salmon	250	9B	1.8		8,003	460	5,335	7,917	21,715	21,715
11-1392	Fish & Wildlife Technician 2	PT	A	GP	Dillingham	237	9B / C	4.0		16,640	813	6,934	15,289	39,676	39,676
11-1395	Analyst/Programmer 3	FT	A	GP	Anchorage	200	18B / C	12.0		65,464	2,258	0	43,868	111,590	111,590
11-1396	Fish & Wildlife Technician 2	PT	A	GP	King Salmon	250	9B	1.7		7,558	421	4,637	7,324	19,940	19,940
11-1413	Fishery Biologist 1	PT	A	GP	Cordova	211	14G / J	5.5		30,575	1,156	2,946	21,442	56,119	45,456
11-1418	Fishery Biologist 1	PT	A	GP	Soldotna	200	14A	4.0		15,633	615	2,200	13,108	31,556	31,556
11-1420	Fish & Wildlife Technician 2	PT	A	GP	Cordova	211	9B	1.5		4,936	312	4,100	5,808	15,156	5,002
11-1422	Office Assistant 1	PT	A	GP	Cordova	211	8D / E	3.5		11,761	433	789	10,309	23,292	19,099
11-1455	Maint Gen Jrny	FT	A	LL	King Salmon	211	54D / E	12.0		62,317	2,991	4,372	44,608	114,288	114,288

Note: If a position is split, an asterisk (\*) will appear in the Split/Count column. If the split position is also counted in the component, two asterisks (\*\*) will appear in this column. [No valid job title] appearing in the Job Class Title indicates that the PCN has an invalid class code or invalid range for the class code effective date of this scenario.



**Personal Services Expenditure Detail**  
**Department of Fish and Game**

**Scenario:** FY2024 Governor (19867)  
**Component:** Central Region Fisheries Management (2168)  
**RDU:** Commercial Fisheries (143)

PCN	Job Class Title	Time Status	Retire Code	Barg Unit	Location	Salary Sched	Range / Step	Comp Months	Split / Count	Annual Salaries	COLA	Premium Pay	Annual Benefits	Total Costs	UGF Amount
11-1465	Office Assistant 2	PT	A	GP	Homer	200	10A	1.0	**	3,052	109	112	2,785	6,058	6,058
11-1480	Fishery Biologist 1	PT	A	GP	Homer	200	14A / B	10.0		40,014	1,455	2,166	31,856	75,491	0
11-1482	Fish & Wildlife Technician 2	PT	A	GP	Dillingham	237	9B	2.0		8,122	327	1,368	6,772	16,589	16,589
11-1484	Fish & Wildlife Technician 2	PT	A	GP	King Salmon	250	9B	1.3		5,780	303	2,995	5,392	14,470	14,470
11-1485	Fish & Wildlife Technician 2	PT	A	GP	Dillingham	237	9B	2.0		8,122	333	1,536	6,836	16,827	16,827
11-1495	Fish & Wildlife Technician 2	PT	A	GP	Soldotna	200	9A	3.0		8,629	322	716	8,300	17,967	17,967
11-1496	Fish & Wildlife Technician 2	PT	A	GP	Cordova	211	9B	4.0		13,163	492	1,093	11,749	26,497	26,497
11-1497	Fish & Wildlife Technician 2	PT	A	GP	Dillingham	237	9A	1.0		3,941	161	727	3,357	8,186	8,186
11-1498	Fish & Wildlife Technician 2	PT	A	GP	King Salmon	250	9B	1.7		7,558	394	3,873	7,034	18,859	18,859
11-1500	Fish & Wildlife Technician 2	PT	A	GP	King Salmon	250	9B	1.0		4,446	255	2,954	4,394	12,049	12,049
11-1503	Fish & Wildlife Technician 2	PT	A	GP	Cordova	211	9B	3.0		9,872	401	1,761	9,169	21,203	7,421
11-1505	Fish & Wildlife Technician 2	PT	A	GP	Homer	200	9B	3.0		8,892	316	273	8,231	17,712	0
11-1507	Fish & Wildlife Technician 2	PT	A	GP	King Salmon	250	9B	1.3		5,780	324	3,609	5,625	15,338	15,338
11-1514	Fish & Wildlife Technician 2	PT	A	GP	Soldotna	200	9B	2.0		5,928	254	1,422	5,959	13,563	13,563
11-1515	Fish & Wildlife Technician 3	PT	A	GP	Cordova	211	11A	3.0		10,813	403	865	9,186	21,267	21,267
11-1516	Fish & Wildlife Technician 2	PT	A	GP	Homer	200	9K	3.5		12,945	494	1,375	10,981	25,795	7,739
11-1517	Fish & Wildlife Technician 3	PT	A	GP	Soldotna	200	11B / C	6.0		20,192	697	0	17,170	38,059	0
11-1519	Fish & Wildlife Technician 2	PT	A	GP	Dillingham	237	9B	1.5		6,091	405	5,654	6,837	18,987	18,987
11-1522	Fish & Wildlife Technician 2	PT	A	GP	Dillingham	237	9F / G	4.5		21,199	899	4,870	17,028	43,996	23,318
11-1527	Fish & Wildlife Technician 2	PT	A	GP	Cordova	211	9B	4.0		13,163	493	1,123	11,760	26,539	26,539
11-1532	Fish & Wildlife Technician 2	PT	A	GP	Cordova	211	9B	2.0		6,581	358	3,796	7,109	17,844	17,844
11-1534	Fish & Wildlife Technician 2	PT	A	GP	King Salmon	250	9B	1.0		4,446	268	3,324	4,535	12,573	12,573
11-1535	Fish & Wildlife Technician 2	PT	A	GP	Valdez	211	9B	2.5		8,227	307	668	7,337	16,539	16,539
11-1536	Fish & Wildlife Technician 2	PT	A	GP	Dillingham	237	9B	1.5		6,091	410	5,785	6,887	19,173	19,173
11-1537	Fish & Wildlife Technician 2	PT	A	GP	Soldotna	200	9B	1.5		4,446	177	684	4,324	9,631	9,631
11-1540	Fishery Biologist 2	FT	A	SS	Anchorage	200	16F / J	12.0		68,950	951	0	47,867	117,768	117,768
11-1543	Fish & Wildlife Technician 2	PT	A	GP	King Salmon	250	9B / C	1.2		5,401	278	2,667	4,965	13,311	13,311
11-1545	Fish & Wildlife Technician 3	PT	A	GP	King Salmon	250	11K / L	4.0		25,725	1,008	3,491	17,432	47,656	47,656
11-1548	Fish & Wildlife Technician 2	PT	A	GP	King Salmon	250	9B	1.0		4,446	261	3,119	4,457	12,283	12,283
11-1549	Fish & Wildlife Technician 2	PT	A	GP	Dillingham	237	9B	2.0		8,122	327	1,349	6,764	16,562	16,562
11-1550	Fish & Wildlife Technician 2	PT	A	GP	King Salmon	250	9B	1.5		6,669	372	4,104	6,467	17,612	17,612
11-1552	Fish & Wildlife Technician 2	PT	A	GP	Soldotna	200	9B	2.0		5,928	229	711	5,689	12,557	12,557
11-1553	Fish & Wildlife Technician 2	PT	A	GP	King Salmon	250	9D	1.7		8,011	332	1,609	6,346	16,298	16,298
11-1554	Fish & Wildlife Technician 2	PT	A	GP	King Salmon	250	9C	3.0		13,733	618	4,183	11,556	30,090	30,090
11-1555	Fish & Wildlife Technician 2	PT	A	GP	Cordova	211	9A	2.0	**	6,386	246	737	5,872	13,241	13,241
11-1557	Fish & Wildlife Technician 2	PT	A	GP	Dillingham	237	9B	1.3		5,279	279	2,811	5,132	13,501	13,501
11-1559	Fish & Wildlife Technician 2	PT	A	GP	Dillingham	237	9B	1.4		5,685	343	4,248	5,990	16,266	16,266
11-1561	Fish & Wildlife Technician 2	PT	A	GP	King Salmon	250	9E	1.7		8,279	465	5,214	7,817	21,775	21,775

Note: If a position is split, an asterisk (\*) will appear in the Split/Count column. If the split position is also counted in the component, two asterisks (\*\*) will appear in this column. [No valid job title] appearing in the Job Class Title indicates that the PCN has an invalid class code or invalid range for the class code effective date of this scenario.

**Personal Services Expenditure Detail**  
**Department of Fish and Game**

**Scenario:** FY2024 Governor (19867)  
**Component:** Central Region Fisheries Management (2168)  
**RDU:** Commercial Fisheries (143)

PCN	Job Class Title	Time Status	Retire Code	Barg Unit	Location	Salary Sched	Range / Step	Comp Months	Split / Count	Annual Salaries	COLA	Premium Pay	Annual Benefits	Total Costs	UGF Amount
11-1562	Fish & Wildlife Technician 2	PT	A	GP	Dillingham	237	9B	1.3		5,279	271	2,586	5,046	13,182	13,182
11-1563	Fish & Wildlife Technician 2	PT	A	GP	King Salmon	250	9C	1.8		8,240	459	5,070	7,906	21,675	21,675
11-1567	Fish & Wildlife Technician 2	PT	A	GP	Dillingham	237	9B	2.0		8,122	332	1,499	6,821	16,774	16,774
11-1568	Fish & Wildlife Technician 2	PT	A	GP	Dillingham	237	9C	4.0		16,725	811	6,792	15,267	39,595	39,595
11-1570	Fish & Wildlife Technician 2	PT	A	GP	Dillingham	237	9B	1.5		6,091	405	5,647	6,834	18,977	18,977
11-1573	Fish & Wildlife Technician 2	PT	A	GP	Soldotna	200	9A	1.5		4,314	167	531	4,215	9,227	9,227
11-1574	Fish & Wildlife Technician 2	PT	A	GP	King Salmon	250	9B	1.3		5,780	287	2,544	5,220	13,831	13,831
11-1575	Fish & Wildlife Technician 2	PT	A	GP	King Salmon	250	9B	1.5		6,669	369	4,021	6,436	17,495	17,495
11-1576	Fish & Wildlife Technician 2	PT	A	GP	King Salmon	250	9B	1.7		7,558	407	4,227	7,169	19,361	19,361
11-1577	Fish & Wildlife Technician 2	PT	A	GP	King Salmon	250	9B	3.0		13,338	586	3,652	11,204	28,780	28,780
11-1588	Research Analyst 1	FT	A	GP	Homer	200	13J / K	12.0		56,331	1,973	863	40,727	99,894	0
11-1590	Fish & Wildlife Technician 3	PT	A	GP	Homer	99	11P / Q	4.0		20,378	878	5,059	15,996	42,311	14,809
11-1606	Fish & Wildlife Technician 2	PT	A	GP	Cordova	211	9E	4.5	**	16,219	631	2,064	14,070	32,984	25,398
11-1609	Fish & Wildlife Technician 2	PT	A	GP	Homer	200	9L	0.5		1,909	84	528	1,717	4,238	0
11-1612	Fish & Wildlife Technician 2	PT	A	GP	Cordova	211	9B	2.0		6,581	250	668	5,920	13,419	13,419
11-1615	Fish & Wildlife Technician 3	PT	A	GP	Homer	200	11A	9.5		30,844	1,202	4,000	28,278	64,324	45,027
11-1640	Fish & Wildlife Technician 2	PT	A	GP	King Salmon	250	9B	1.5		6,669	294	1,846	5,610	14,419	14,419
11-1641	Fishery Biologist 1	PT	A	GP	Cordova	211	14B	4.0		17,947	648	828	13,466	32,889	0
11-1642	Fish & Wildlife Technician 3	PT	A	GP	Soldotna	200	11B	2.5		8,353	343	1,603	7,740	18,039	18,039
11-1643	Fish & Wildlife Technician 2	PT	A	GP	King Salmon	250	9B	1.3		5,780	327	3,708	5,663	15,478	15,478
11-1645	Fish & Wildlife Technician 2	PT	A	GP	Dillingham	237	9B	1.3		5,279	279	2,811	5,132	13,501	13,501
11-1648	Fish & Wildlife Technician 2	PT	A	GP	Cordova	211	9B	3.2		10,530	452	2,581	10,047	23,610	0
11-1649	Fish & Wildlife Technician 3	PT	A	GP	Seward	200	11J	4.0		16,283	603	1,188	12,970	31,044	31,044
11-1650	Fish & Wildlife Technician 2	PT	A	GP	Cordova	211	9B	2.0		6,581	300	2,126	6,474	15,481	0
11-1653	Fish & Wildlife Technician 2	PT	A	GP	King Salmon	250	9C	1.7		7,782	426	4,580	7,388	20,176	20,176
11-1658	Fish & Wildlife Technician 2	PT	A	GP	Cordova	211	9B	2.0		6,581	358	3,796	7,109	17,844	17,844
11-1660	Fish & Wildlife Technician 3	PT	A	GP	King Salmon	250	11B / C	1.3		6,647	317	2,544	5,550	15,058	15,058
11-1669	Fish & Wildlife Technician 3	PT	A	GP	Dillingham	237	11A	2.0		8,895	348	1,190	6,998	17,431	17,431
11-1674	Fish & Wildlife Technician 2	PT	A	GP	Dillingham	237	9B	1.6		6,497	369	4,196	6,595	17,657	17,657
11-1675	Fish & Wildlife Technician 2	PT	A	GP	Dillingham	237	9B	1.5		6,091	372	4,685	6,469	17,617	17,617
11-1676	Fish & Game Program Technician	FT	A	GP	Anchorage	200	12A	6.0	**	20,631	728	476	17,518	39,353	38,960
11-1771	Fish & Wildlife Technician 2	PT	A	GP	King Salmon	250	9B	1.5		6,669	375	4,188	6,499	17,731	17,731
11-1782	Fishery Biologist 2	FT	A	SS	Homer	99	16N	12.0		81,490	1,354	16,665	58,962	158,471	44,372
11-1839	Administrative Officer 1	FT	A	SS	Anchorage	200	17A	12.0		61,755	852	0	45,133	107,740	107,740
11-1879	Fish & Wildlife Technician 2	PT	A	GP	King Salmon	250	9C	1.5		6,866	375	4,014	6,508	17,763	17,763
11-1909	Fishery Biologist 1	PT	A	GP	Cordova	211	14A	9.0		39,049	1,347	0	29,084	69,480	69,480
11-1970	Fishery Biologist 1	FT	A	GP	Homer	200	14G / J	10.0	**	49,913	1,896	5,052	36,713	93,574	0
11-1977	Fish & Wildlife Technician 2	PT	A	GP	Cordova	211	9C	3.2		10,842	466	2,658	10,195	24,161	0

Note: If a position is split, an asterisk (\*) will appear in the Split/Count column. If the split position is also counted in the component, two asterisks (\*\*) will appear in this column. [No valid job title] appearing in the Job Class Title indicates that the PCN has an invalid class code or invalid range for the class code effective date of this scenario.

**Personal Services Expenditure Detail**  
**Department of Fish and Game**

**Scenario:** FY2024 Governor (19867)  
**Component:** Central Region Fisheries Management (2168)  
**RDU:** Commercial Fisheries (143)

PCN	Job Class Title	Time Status	Retire Code	Barg Unit	Location	Salary Sched	Range / Step	Comp Months	Split / Count	Annual Salaries	COLA	Premium Pay	Annual Benefits	Total Costs	UGF Amount
11-2118	Fish & Game Program Technician	FT	A	GP	King Salmon	250	12B	4.8	*	25,876	893	0	17,430	44,199	44,199
11-5045	Office Assistant 2	FT	A	GP	Anchorage	200	10F / G	12.0		43,004	1,484	0	35,336	79,824	79,824
11-5062	Fishery Biologist 3	FT	A	SS	Fairbanks	203	18J	12.0		83,699	1,155	0	53,470	138,324	138,324
11-5187	Fishery Biologist 2	PT	A	GP	Homer	99	16P	11.0		78,766	3,495	22,534	55,899	160,694	75,526
11-5189	Accounting Technician 1	FT	A	GP	Anchorage	200	12J	12.0		52,260	1,803	0	38,852	92,915	92,915
11-5243	Fishery Biologist 2	FT	A	GP	Homer	200	16M / N	12.0		77,302	2,667	0	48,366	128,335	128,335
11-5251	Fishery Biologist 1	PT	A	GP	King Salmon	250	14A	3.0		17,589	607	0	11,432	29,628	29,628
11-5274	Fish & Wildlife Technician 2	PT	A	GP	Soldotna	200	9B	2.0		5,928	224	574	5,637	12,363	12,363
11-5296	Fish & Wildlife Technician 3	PT	A	GP	Soldotna	200	11B / C	6.0		20,124	750	1,603	17,753	40,230	10,460
11-5300	Fish & Wildlife Technician 3	PT	A	GP	Soldotna	200	11D	2.5		8,860	329	687	7,585	17,461	17,461
11-5319	Fish & Wildlife Technician 2	PT	A	GP	Cordova	211	9B / C	4.7		15,797	682	3,979	14,954	35,412	11,332
11-5333	Fish & Wildlife Technician 3	PT	A	GP	Cordova	99	11M / N	5.5		28,529	1,059	2,165	20,368	52,121	37,006
11-5340	Fish & Wildlife Technician 2	PT	A	GP	Soldotna	200	9A	3.0		8,629	321	663	8,280	17,893	17,893
11-5356	Fish & Wildlife Technician 3	PT	A	GP	Valdez	211	11K	1.5		6,996	319	2,238	5,883	15,436	15,436
11-5357	Fishery Biologist 1	PT	A	GP	Anchorage	200	14A	7.5		29,311	1,197	5,375	25,051	60,934	46,310
11-5362	Fish & Wildlife Technician 2	PT	A	GP	Homer	200	9B	1.0		2,964	176	2,134	3,520	8,794	0
11-7019	Accounting Technician 2	FT	A	SS	Anchorage	600	14E	4.5	*	21,749	300	0	16,390	38,439	38,439
11-7020	Research Analyst 2	PT	A	GP	Homer	200	16J / K	11.0		63,812	2,699	14,440	47,143	128,094	93,509
11-7045	Analyst/Programmer 4	FT	A	GP	Anchorage	200	20C / D	12.0		76,948	2,655	0	48,231	127,834	127,834
11-7066	Fish & Wildlife Technician 2	PT	A	GP	Cordova	211	9B	2.5		8,227	307	668	7,337	16,539	16,539
11-7601	Fish & Wildlife Technician 3	PT	A	GP	Homer	200	11K	6.0		25,214	910	1,163	19,520	46,807	38,850
11-7613	Fish & Wildlife Technician 2	PT	A	GP	King Salmon	250	9B	1.7		7,558	411	4,348	7,215	19,532	19,532
<b>Total</b>													<b>Total Salary Costs:</b>	5,019,465	
<b>Positions</b>													<b>Total COLA:</b>	136,104	
<b>Full Time Positions:</b>													<b>Total Premium Pay:</b>	510,261	
<b>Part Time Positions:</b>													<b>Total Benefits:</b>	3,594,444	
<b>Non Permanent Positions:</b>															
<b>Positions in Component:</b>															
													<b>Total Pre-Vacancy:</b>	9,260,274	
													<b>Minus Vacancy Adjustment of 4.21%:</b>	(389,974)	
													<b>Total Post-Vacancy:</b>	8,870,300	
													<b>Plus Lump Sum Premium Pay:</b>	0	
													<b>Personal Services Line 100:</b>	8,870,300	
<b>Total Component Months:</b>		893.7													

Note: If a position is split, an asterisk (\*) will appear in the Split/Count column. If the split position is also counted in the component, two asterisks (\*\*) will appear in this column. [No valid job title] appearing in the Job Class Title indicates that the PCN has an invalid class code or invalid range for the class code effective date of this scenario.

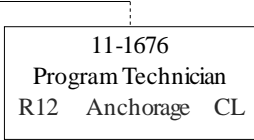
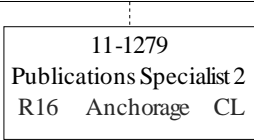
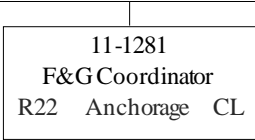
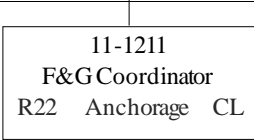
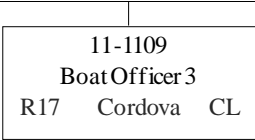
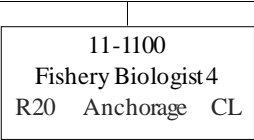
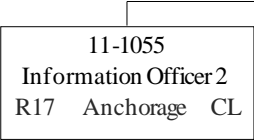
**Personal Services Expenditure Detail**  
**Department of Fish and Game**

**Scenario:** FY2024 Governor (19867)  
**Component:** Central Region Fisheries Management (2168)  
**RDU:** Commercial Fisheries (143)

<b>PCN Funding Sources:</b>	<b>Pre-Vacancy</b>	<b>Post-Vacancy</b>	<b>Percent</b>
1002 Federal Receipts	134,473	128,810	1.45%
1003 General Fund Match	234,814	224,926	2.54%
1004 General Fund Receipts	7,671,975	7,348,888	82.85%
1005 General Fund/Program Receipts	156,963	150,353	1.70%
1007 Interagency Receipts	27,704	26,537	0.30%
1061 Capital Improvement Project Receipts	106,274	101,799	1.15%
1108 Statutory Designated Program Receipts	452,718	433,653	4.89%
1109 Test Fisheries Receipts	121,739	116,612	1.31%
1201 Commercial Fisheries Entry Commission Receipts	353,614	338,723	3.82%
<b>Total PCN Funding:</b>	<b>9,260,274</b>	<b>8,870,300</b>	<b>100.00%</b>

Note: If a position is split, an asterisk (\*) will appear in the Split/Count column. If the split position is also counted in the component, two asterisks (\*\*) will appear in this column.  
 [No valid job title] appearing in the Job Class Title indicates that the PCN has an invalid class code or invalid range for the class code effective date of this scenario.

Department of Fish & Game  
2168 - Central Region Fisheries Management  
FY2024 Governor Budget



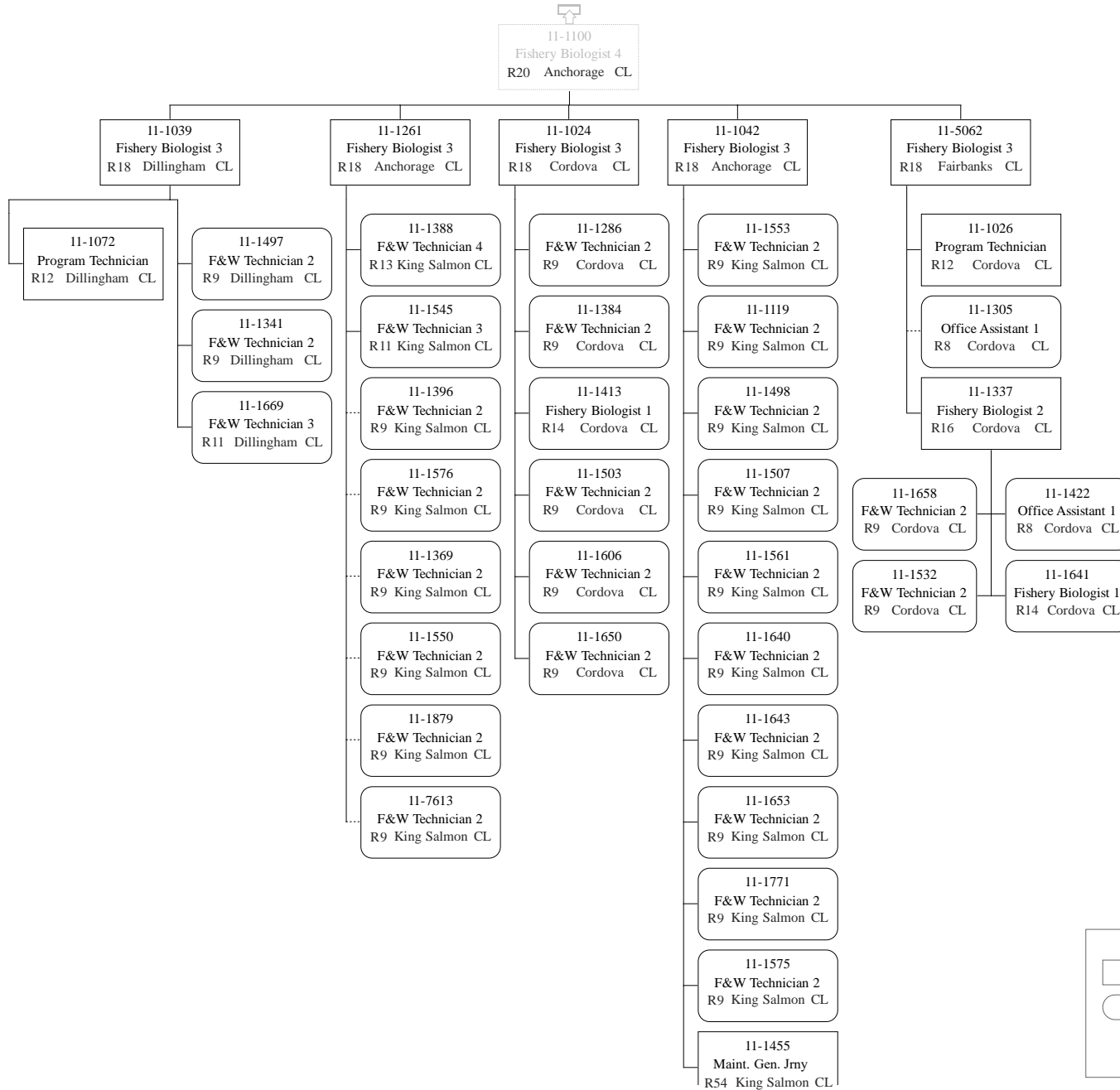
Department of Fish & Game  
2168 - Central Region Fisheries Management  
FY2024 Governor Budget



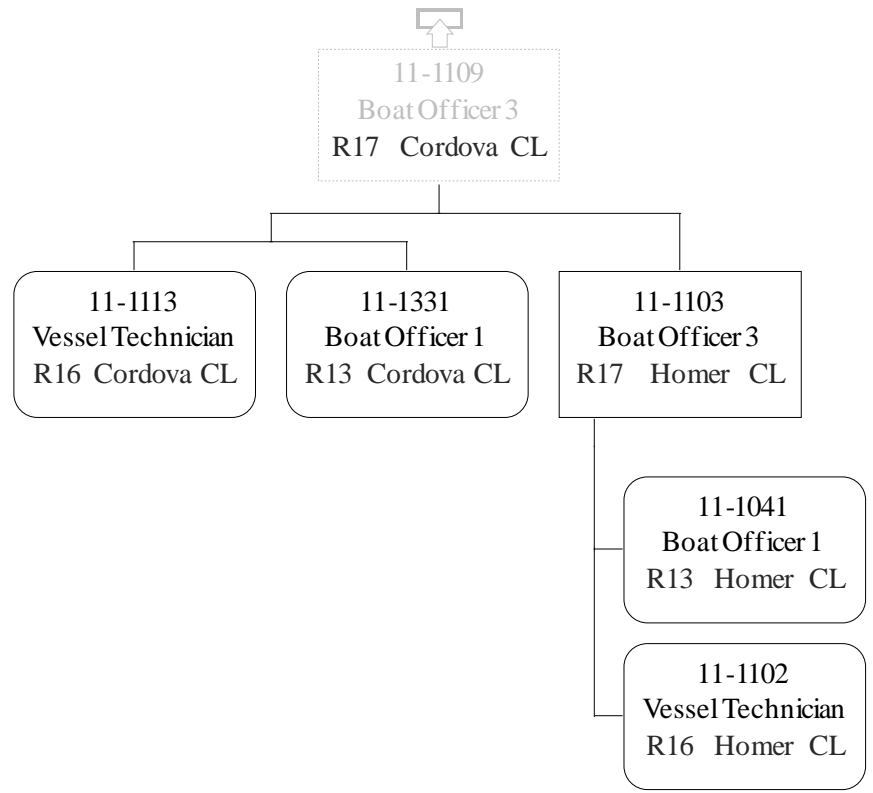
11-1055  
Information Officer 2  
R17 Anchorage CL

	Permanent Full-time
	Permanent Part-Time & Seasonal

Department of Fish & Game  
 2168 - Central Region Fisheries Management  
 FY2024 Governor Budget

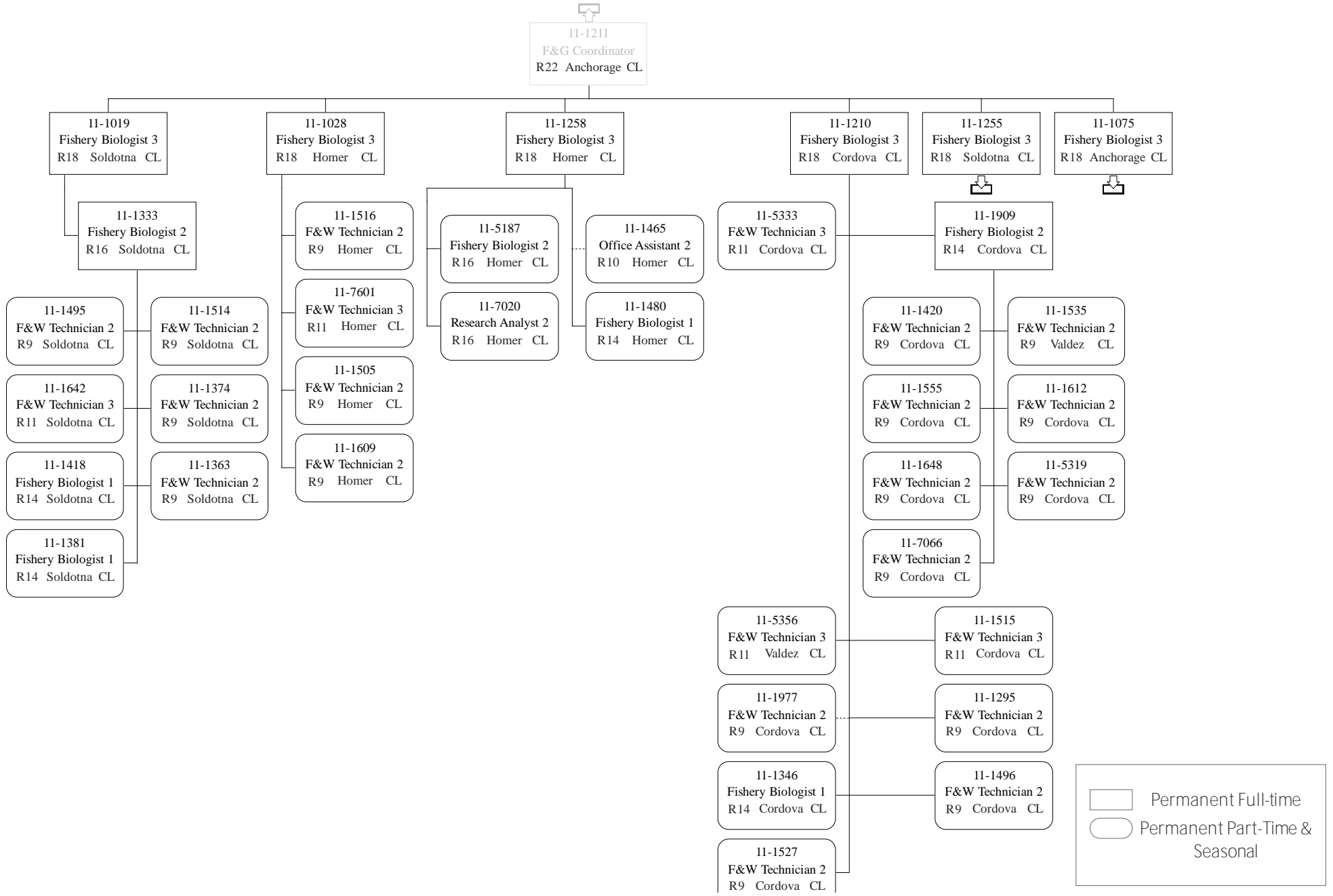


Department of Fish & Game  
2168 - Central Region Fisheries Management  
FY2024 Governor Budget

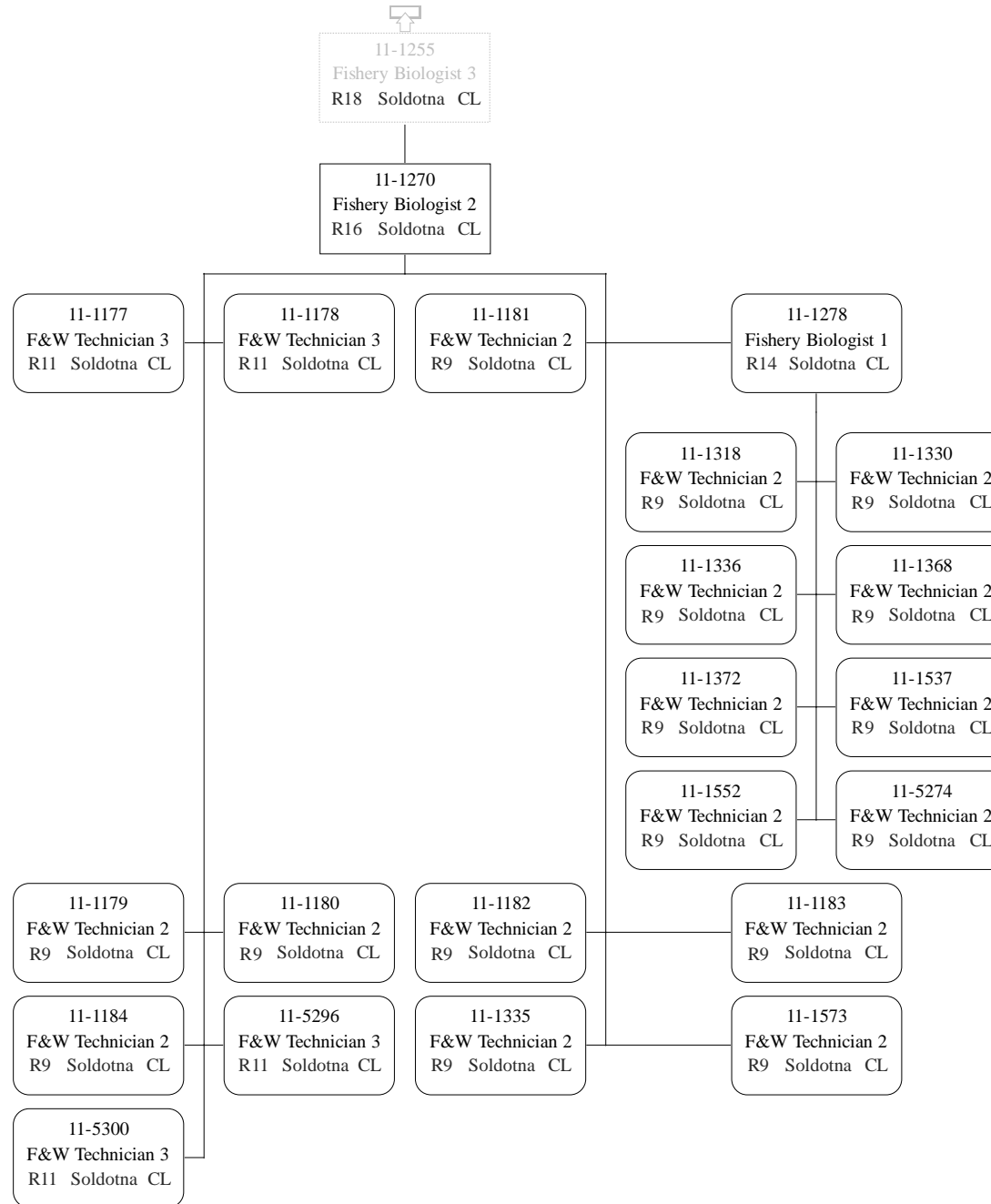




Department of Fish & Game  
 2168 - Central Region Fisheries Management  
 FY2024 Governor Budget

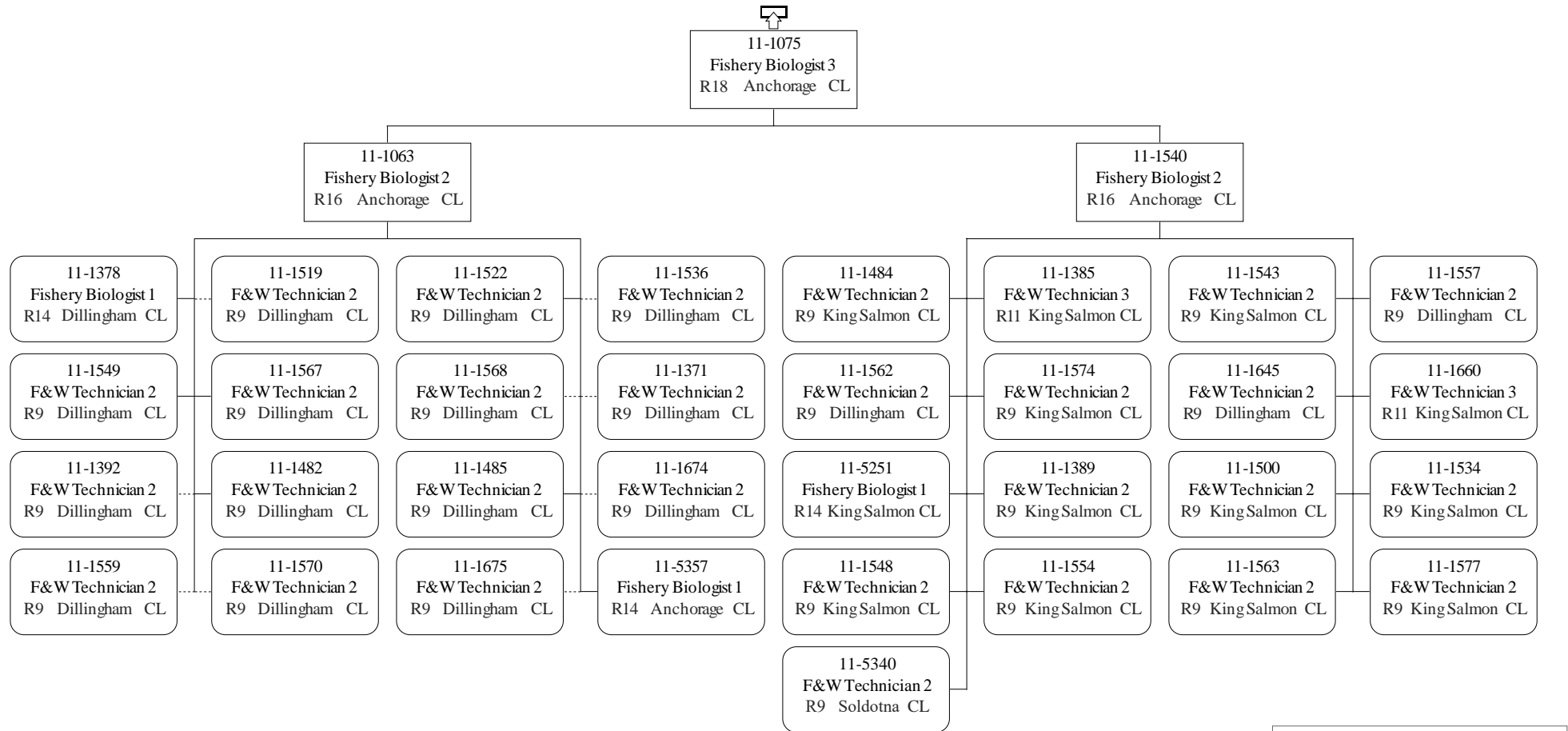


Department of Fish & Game  
 2168 - Central Region Fisheries Management  
 FY2024 Governor Budget



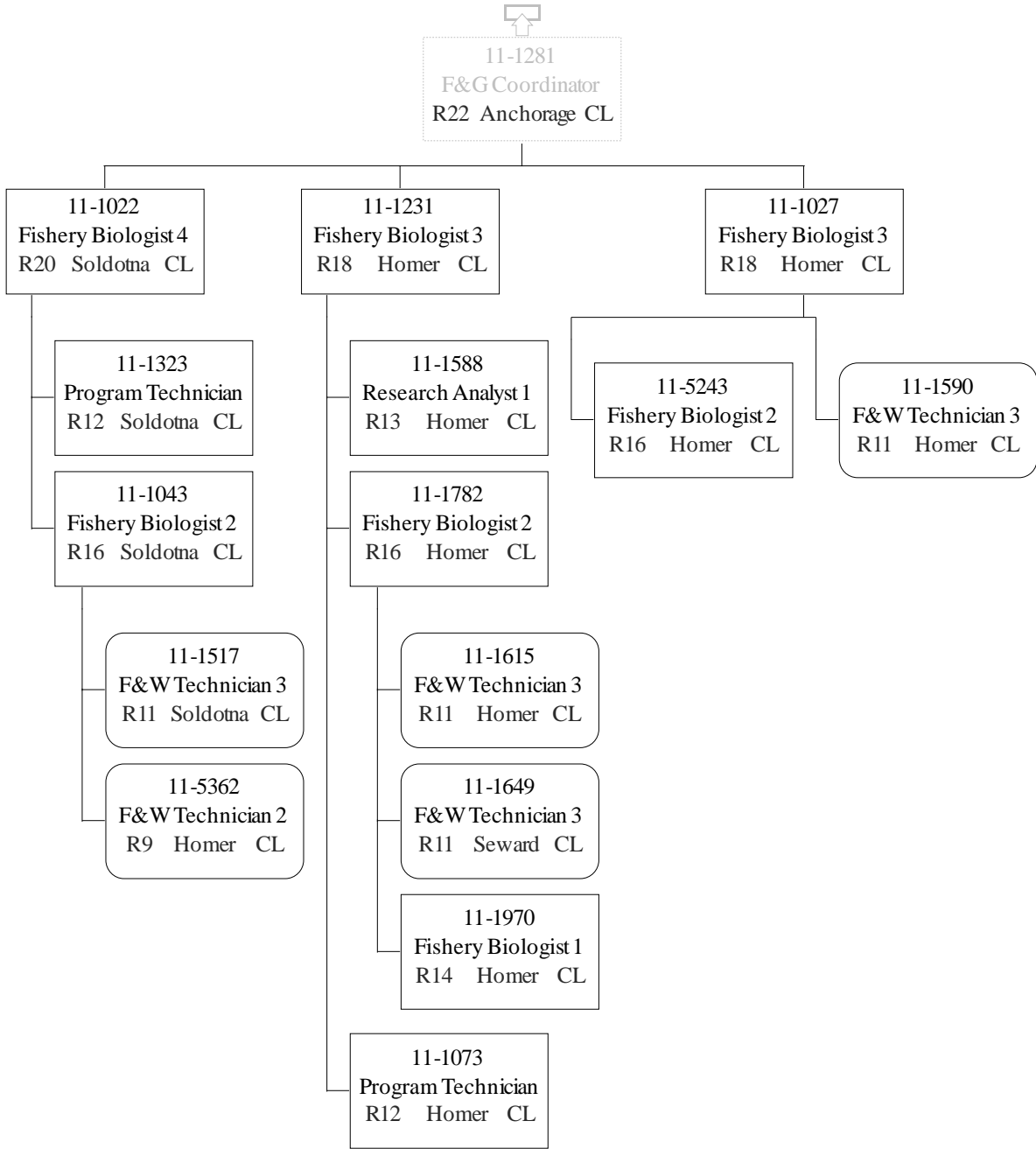
	Permanent Full-time
	Permanent Part-Time & Seasonal

Department of Fish & Game  
 2168 - Central Region Fisheries Management  
 FY2024 Governor Budget

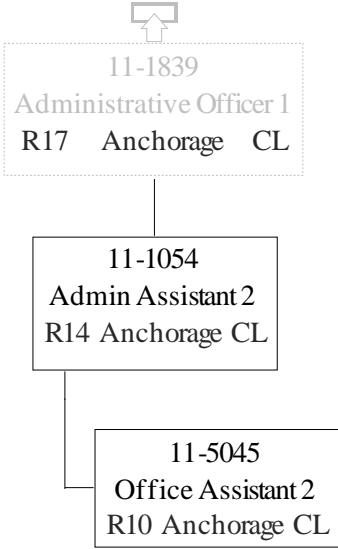


Permanent Full-time  
 Permanent Part-Time & Seasonal

Department of Fish & Game  
 2168 - Central Region Fisheries Management  
 FY2024 Governor Budget



Department of Fish & Game 2168 -  
Central Region Fisheries Management  
FY2024 Governor Budget



Department of Fish and Game  
2168 – Central Region Fisheries Management  
FY2024 Governor Budget

