

# **State of Alaska FY2024 Governor's Operating Budget**

## **Department of Fish and Game Westward Region Fisheries Management Component Budget Summary**

**Component: Westward Region Fisheries Management**

**Contribution to Department's Mission**

Westward Region contributes to the department's mission by 1) ensuring the conservation of natural stocks of fish, shellfish, and aquatic plants based on scientifically sound assessments; 2) sustaining fisheries based on the control and regulation of harvests through responsive management; 3) increasing fishery harvests and harvest opportunities of fish, shellfish, and aquatic plants through the investigation of maximum sustained yield for individual and aggregate populations; 4) expanding fishery potential through identification of underutilized species/stocks of fish, shellfish, and aquatic plants; 5) maintaining and enhancing opportunities for public participation in the development of fishery management plans and harvest regulations; 6) developing and maintaining comprehensive databases on commercial, subsistence, and personal use harvests, and associated processing of fish, shellfish, and aquatic plants; 7) promoting public education on the conservation, production, and economic and social benefits of yields from fish, shellfish, and aquatic plants; and 8) providing data, expertise, and written and oral comment in the public regulatory process through the Alaska Board of Fisheries (BOF).

**Core Services**

- See RDU core services.

**Major Component Accomplishments in 2022**

See RDU level narrative.

**Key Component Challenges**

See RDU level narrative.

**Significant Changes in Results to be Delivered in FY2024**

See RDU level narrative.

**Statutory and Regulatory Authority**

AS 16.05  
5 AAC

**Contact Information**

**Contact:** Sam Rabung, Director  
**Phone:** (907) 465-6100  
**E-mail:** samuel.rabung@alaska.gov

Westward Region Fisheries Management Personal Services Information				
Authorized Positions			Personal Services Costs	
	FY2023 Management Plan	FY2024 Governor		
Full-time	51	51	Annual Salaries	6,622,888
Part-time	75	75	COLA	181,638
Nonpermanent	0	0	Premium Pay	591,063
			Annual Benefits	4,385,166
			<i>Less 1.80% Vacancy Factor</i>	<i>(212,455)</i>
			Lump Sum Premium Pay	0
<b>Totals</b>	<b>126</b>	<b>126</b>	<b>Total Personal Services</b>	<b>11,568,300</b>

Position Classification Summary					
Job Class Title	Anchorage	Fairbanks	Juneau	Others	Total
Accounting Technician 1	0	0	0	1	1
Accounting Technician 2	0	0	0	1	1
Administrative Assistant 2	0	0	0	1	1
Administrative Officer 1	0	0	0	1	1
Aircraft Pilot 1	0	0	0	1	1
Aircraft Pilot 2	0	0	0	1	1
Analyst/Programmer 3	0	0	0	1	1
Analyst/Programmer 4	0	0	0	1	1
Boat Officer 2	0	0	0	1	1
Boat Officer 3	0	0	0	2	2
Boat Officer 4	0	0	0	1	1
Fish & Game Coordinator	0	0	0	3	3
Fish & Wildlife Technician 1	0	0	0	1	1
Fish & Wildlife Technician 2	0	0	0	23	23
Fish & Wildlife Technician 3	0	0	0	31	31
Fish & Wildlife Technician 4	0	0	0	1	1
Fishery Biologist 1	0	0	0	19	19
Fishery Biologist 2	0	0	0	19	19
Fishery Biologist 3	0	0	0	12	12
Fishery Biologist 4	0	0	0	2	2
Mts/Bfc Jrny 1	0	0	0	1	1
Mts/Bfc Jrny 2	0	0	0	1	1
Office Assistant 1	0	0	0	1	1
<b>Totals</b>	<b>0</b>	<b>0</b>	<b>0</b>	<b>126</b>	<b>126</b>

**Component Detail All Funds**  
**Department of Fish and Game**

**Component:** Westward Region Fisheries Management (2170)  
**RDU:** Commercial Fisheries (143)

Non-Formula Component

	<b>FY2022 Actuals</b>	<b>FY2023 Conference Committee</b>	<b>FY2023 Authorized</b>	<b>FY2023 Management Plan</b>	<b>FY2024 Governor</b>	<b>FY2023 Management Plan vs FY2024 Governor</b>	
71000 Personal Services	10,605.7	11,319.8	11,319.8	11,319.8	11,568.3	248.5	2.2%
72000 Travel	83.9	215.0	215.0	215.0	215.0	0.0	0.0%
73000 Services	1,373.4	3,074.3	3,074.3	3,074.3	2,874.3	-200.0	-6.5%
74000 Commodities	1,014.9	882.4	882.4	882.4	1,082.4	200.0	22.7%
75000 Capital Outlay	27.4	89.4	89.4	89.4	89.4	0.0	0.0%
77000 Grants, Benefits	0.0	0.0	0.0	0.0	0.0	0.0	0.0%
78000 Miscellaneous	0.0	0.0	0.0	0.0	0.0	0.0	0.0%
<b>Totals</b>	<b>13,105.3</b>	<b>15,580.9</b>	<b>15,580.9</b>	<b>15,580.9</b>	<b>15,829.4</b>	<b>248.5</b>	<b>1.6%</b>
<b>Fund Sources:</b>							
1002 Fed Rcpts (Fed)	1,930.2	2,743.1	2,743.1	2,743.1	2,773.7	30.6	1.1%
1004 Gen Fund (UGF)	7,831.9	8,036.4	8,036.4	8,036.4	9,192.0	1,155.6	14.4%
1005 GF/Prgm (DGF)	317.5	388.8	388.8	388.8	397.7	8.9	2.3%
1007 I/A Rcpts (Other)	30.0	70.0	70.0	70.0	70.0	0.0	0.0%
1061 CIP Rcpts (Other)	85.7	724.2	724.2	724.2	729.8	5.6	0.8%
1108 Stat Desig (Other)	855.6	1,355.3	1,355.3	1,355.3	1,375.3	20.0	1.5%
1109 Test Fish (DGF)	1,532.2	2,261.9	2,261.9	2,261.9	1,289.7	-972.2	-43.0%
1201 CFEC Rcpts (DGF)	522.2	1.2	1.2	1.2	1.2	0.0	0.0%
<b>Unrestricted General (UGF)</b>	<b>7,831.9</b>	<b>8,036.4</b>	<b>8,036.4</b>	<b>8,036.4</b>	<b>9,192.0</b>	<b>1,155.6</b>	<b>14.4%</b>
<b>Designated General (DGF)</b>	<b>2,371.9</b>	<b>2,651.9</b>	<b>2,651.9</b>	<b>2,651.9</b>	<b>1,688.6</b>	<b>-963.3</b>	<b>-36.3%</b>
<b>Other Funds</b>	<b>971.3</b>	<b>2,149.5</b>	<b>2,149.5</b>	<b>2,149.5</b>	<b>2,175.1</b>	<b>25.6</b>	<b>1.2%</b>
<b>Federal Funds</b>	<b>1,930.2</b>	<b>2,743.1</b>	<b>2,743.1</b>	<b>2,743.1</b>	<b>2,773.7</b>	<b>30.6</b>	<b>1.1%</b>
<b>Positions:</b>							
Permanent Full Time	50	50	50	51	51	0	0.0%
Permanent Part Time	78	78	78	75	75	0	0.0%
Non Permanent	0	0	0	0	0	0	0.0%

**Change Record Detail - Multiple Scenarios with Descriptions**  
**Department of Fish and Game**

**Component:** Westward Region Fisheries Management (2170)  
**RDU:** Commercial Fisheries (143)

Scenario/Change Record Title	Trans Type	Totals	Personal Services	Travel	Services	Commodities	Capital Outlay	Grants, Benefits	Miscellaneous	Positions		NP
										PFT	PPT	
***** Changes From FY2023 Conference Committee To FY2023 Authorized *****												
<b>FY2023 Conference Committee</b>												
	ConfCom	15,580.9	11,319.8	215.0	3,074.3	882.4	89.4	0.0	0.0	50	78	0
1002 Fed Rcpts		2,743.1										
1004 Gen Fund		8,036.4										
1005 GF/Prgm		388.8										
1007 I/A Rcpts		70.0										
1061 CIP Rcpts		724.2										
1108 Stat Desig		1,355.3										
1109 Test Fish		2,261.9										
1201 CFEC Rcpts		1.2										
<b>Subtotal</b>		<b>15,580.9</b>	<b>11,319.8</b>	<b>215.0</b>	<b>3,074.3</b>	<b>882.4</b>	<b>89.4</b>	<b>0.0</b>	<b>0.0</b>	<b>50</b>	<b>78</b>	<b>0</b>
***** Changes From FY2023 Authorized To FY2023 Management Plan *****												
<b>Transfer Fish &amp; Wildlife Technician 3 (11-1825) to Arctic-Yukon-Kuskokwim Region Fisheries Management</b>												
	PosAdj	0.0	0.0	0.0	0.0	0.0	0.0	0.0	0.0	0	-1	0
Transfer (11-1825) a part-time Fish & Wildlife Technician 3, range 11, located in Kodiak, from the Westward Region Fisheries Management component to the Arctic-Yukon-Kuskokwim (AYK) Region Fisheries Management component to meet project needs for the Lower Yukon Test Fishery. The remaining Westward staff are sufficient to accommodate the anticipated workload.												
Department of Fish & Game positions are transferred statewide as needed to accommodate priority surveys and assessments required to accomplish the department's mission.												
<b>Transfer Fishery Biologist 1 (11-1133) to Statewide Region Fisheries Management</b>												
	PosAdj	0.0	0.0	0.0	0.0	0.0	0.0	0.0	0.0	0	-1	0
Transfer a part-time Fishery Biologist 1, (11-1133), range 14, located in Anchorage, from the Westward Region Fisheries Management component to the Statewide Region Fisheries Management component to oversee federal fishery disaster programs and administering the Southeast Alaska (SEAK) Chinook Salmon Fishery Mitigation Program. The remaining Westward staff are sufficient to accommodate the anticipated workload.												
Department of Fish & Game positions are transferred statewide as needed to accommodate priority surveys and assessments required to accomplish the department's mission.												
<b>Change Fish &amp; Wildlife Technician 3 (11-1603) from Part-Time to Full-Time</b>												
	PosAdj	0.0	0.0	0.0	0.0	0.0	0.0	0.0	0.0	1	-1	0
Change part-time Fish & Wildlife Technician 3 (11-1603), range 11, located in Dutch Harbor, to full-time for an adjustment in workload.												
<b>Subtotal</b>		<b>15,580.9</b>	<b>11,319.8</b>	<b>215.0</b>	<b>3,074.3</b>	<b>882.4</b>	<b>89.4</b>	<b>0.0</b>	<b>0.0</b>	<b>51</b>	<b>75</b>	<b>0</b>

**Change Record Detail - Multiple Scenarios with Descriptions**  
**Department of Fish and Game**

**Component:** Westward Region Fisheries Management (2170)  
**RDU:** Commercial Fisheries (143)

Scenario/Change Record Title	Trans Type	Totals	Personal Services	Travel	Services	Commodities	Capital Outlay	Grants, Benefits	Miscellaneous	Positions		NP
										PFT	PPT	
***** Changes From FY2023 Management Plan To FY2024 Governor *****												
<b>Alleviate Shortfall in Bering Sea/Aleutian Islands Crab Test Fishery Receipts</b>												
	FndChg	0.0	0.0	0.0	0.0	0.0	0.0	0.0	0.0	0	0	0
1004 Gen Fund		1,000.0										
1109 Test Fish		-1,000.0										
<p>Bering Sea crab fisheries typically generate over \$200 million in annual ex-vessel value but are in rapid decline. Non-general fund sources currently provide about 85 percent of all personnel funding for programs supporting these fisheries. These funds are expected to decline by upwards of 50 percent in the next one to three years.</p> <p>Bristol Bay red king crab (BBRKC) abundance has been in decline and the fishery closed in 2021 due to conservation concerns. The fishery will remain closed for 2022. Closure of the BBRKC fishery does not preclude the annual test fish (TF) cost recovery, however it is foreseeable that test fishery removals will no longer be practical at current levels as the stock continues to decline. Shifting TF cost recovery to Bering Sea snow crab is also not viable. The snow crab stock unexpectedly collapsed in 2020 and is now considered overfished and may close to commercial fishing under a developing federal rebuilding plan. Beginning in FY2024, Bering Sea/Aleutian Island test fish options will be limited, and the target revenue goal will need to be substantially lowered to accommodate conservation and stock rebuilding plan recommendations. Limited carryforward is currently available but will be mostly depleted after one fiscal year should TF cost recovery not occur.</p> <p>For comparison, state general funds were the largest contributor to FY2014 personnel costs. Returning to the historical funding distribution where the TF and crab rationalization projects represented 23 percent and 11 percent respectively relative to FY2023 personnel costs would require \$1,000.0 in replacement funds. These funds would serve as a bridge and stabilize staffing until fishery specific funding opportunities rebound.</p> <p>Below are historical revenues of test fishery receipts:  FY2019 \$1,300.0 in revenue with \$1,300.0 authority  FY2020 \$1,300.0 in revenue with \$1,300.0 authority  FY2021 \$1,200.0 in revenue with \$1,300.0 authority  FY2022 \$1,000.0 in revenue with \$1,300.0 authority</p>												
<b>Align Authority to Meet Anticipated Commodities Costs</b>												
	LIT	0.0	0.0	0.0	-200.0	200.0	0.0	0.0	0.0	0	0	0
Transfer authority from services to commodities to align with anticipated expenditures.												
<b>FY2024 PERS Rate Adjustment</b>												
	SalAdj	22.3	22.3	0.0	0.0	0.0	0.0	0.0	0.0	0	0	0
1002 Fed Rcpts		2.7										
1004 Gen Fund		14.4										
1005 GF/Prgm		0.7										
1061 CIP Rcpts		0.4										
1108 Stat Desig		1.6										
1109 Test Fish		2.5										

**Change Record Detail - Multiple Scenarios with Descriptions**  
**Department of Fish and Game**

**Component:** Westward Region Fisheries Management (2170)  
**RDU:** Commercial Fisheries (143)

Scenario/Change Record Title	Trans Type	Totals	Personal Services	Travel	Services	Commodities	Capital Outlay	Grants, Benefits	Miscellaneous	Positions		NP
										PFT	PPT	
FY2024 PERS rate adjustment to 25.10%: \$22.3												
<b>FY2024 Salary and Health Insurance Increases</b>												
	SalAdj	226.2	226.2	0.0	0.0	0.0	0.0	0.0	0.0	0	0	0
1002 Fed Rcpts		27.9										
1004 Gen Fund		141.2										
1005 GF/Prgm		8.2										
1061 CIP Rcpts		5.2										
1108 Stat Desig		18.4										
1109 Test Fish		25.3										
FY2024 Salary and Health Insurance Increases: \$226.2FY2024 GGU cost of living increase 2.5%: \$129.8												
FY2024 LTC cost of living increase 3.25%: \$5.4												
FY2024 SU cost of living increase 1%: \$45.1												
FY2024 AlaskaCare insurance from \$1,685 to \$1,793 per member per month.: \$42.0												
FY2024 GGU health insurance increase from \$1,567.50 to \$1,573.50 per member per month.: \$3.4												
FY2024 LTC health insurance increase from \$1,580 to \$1,605 per member per month.: \$0.5												
<b>Totals</b>		<b>15,829.4</b>	<b>11,568.3</b>	<b>215.0</b>	<b>2,874.3</b>	<b>1,082.4</b>	<b>89.4</b>	<b>0.0</b>	<b>0.0</b>	<b>51</b>	<b>75</b>	<b>0</b>

**Line Item Detail (1676)**  
**Department of Fish and Game**  
**Travel**

**Component:** Westward Region Fisheries Management (2170)

Line Number	Line Name		FY2022 Actuals	FY2023 Management Plan	FY2024 Governor
2000	Travel		83.9	215.0	215.0
Object Class	Servicing Agency	Explanation	FY2022 Actuals	FY2023 Management Plan	FY2024 Governor
<b>2000 Travel Detail Totals</b>			<b>83.9</b>	<b>215.0</b>	<b>215.0</b>
2000	In-State Employee Travel	In-state employee travel including transportation and lodging	75.3	193.1	193.1
2002	Out of State Employee Travel	Out-of-state employee travel including transportation and lodging	5.1	13.0	13.0
2005	Moving Costs	Move costs including transferring household goods, transportation and lodging	3.5	8.9	8.9



**Line Item Detail (1676)**  
**Department of Fish and Game**  
**Services**

**Component:** Westward Region Fisheries Management (2170)

Line Number	Line Name		FY2022 Actuals	FY2023 Management Plan	FY2024 Governor
3000	Services		1,373.4	3,074.3	2,874.3
Object Class	Servicing Agency	Explanation	FY2022 Actuals	FY2023 Management Plan	FY2024 Governor
<b>3000 Services Detail Totals</b>			<b>1,373.4</b>	<b>3,074.3</b>	<b>2,874.3</b>
3000	Education Services	Training/conference fees and memberships	44.7	101.3	101.3
3003	Information Technology	Information technology training and consulting services and software licensing and maintenance	9.0	20.3	20.3
3004	Telecommunications	Television, long distance, data/network and cell phone services	114.5	137.4	164.8
3005	Health Services	Medical exams and tests	0.9	2.0	2.0
3006	Delivery Services	Freight and postage	69.0	118.0	118.0
3007	Advertising and Promotions	Classified newspaper, radio, and television advertisements	0.1	0.1	0.1
3008	Utilities	Electric, water, sewage, disposal and heating services	292.2	350.6	420.8
3009	Structure/Infrastructure/Land	Appraisal, architect, engineer services and structure/land maintenance and rentals	128.7	138.7	148.7
3010	Equipment/Machinery	Equipment rental, maintenance services and equipment operator charges	61.1	73.4	88.3
3011	Other Services	Printing, copy services, transportation and consulting services. Environmental and economic development fees	522.1	1,910.1	1,587.6
3015	Inter-Agency Conservation/Environmental	Univ - Department-wide RSA - UAF Acoustic Tracking of Tanner Crab	11.1	25.1	25.1
3023	Inter-Agency Building Leases	Trans - Department-wide Building Leases Core Service	61.6	65.0	65.0

**Line Item Detail (1676)**  
**Department of Fish and Game**  
**Services**

**Component:** Westward Region Fisheries Management (2170)

<b>Object Class</b>	<b>Servicing Agency</b>	<b>Explanation</b>	<b>FY2022 Actuals</b>	<b>FY2023 Management Plan</b>	<b>FY2024 Governor</b>
<b>3000 Services Detail Totals</b>			<b>1,373.4</b>	<b>3,074.3</b>	<b>2,874.3</b>
3037	State Equipment Fleet	State Equipment Fleet	58.4	132.3	132.3

**Line Item Detail (1676)**  
**Department of Fish and Game**  
**Commodities**

**Component:** Westward Region Fisheries Management (2170)

Line Number	Line Name		FY2022 Actuals	FY2023 Management Plan	FY2024 Governor
4000	Commodities		1,014.9	882.4	1,082.4
Object Class	Servicing Agency	Explanation	FY2022 Actuals	FY2023 Management Plan	FY2024 Governor
<b>4000 Commodities Detail Totals</b>			<b>1,014.9</b>	<b>882.4</b>	<b>1,082.4</b>
4000	Business	Books, furniture, tools, business supplies and IT equipment <\$5,000	264.8	195.0	262.4
4002	Household/Institutional	Landscaping, food, and cleaning supplies	127.7	110.0	137.7
4003	Scientific and Medical	Instruments, lab and non-lab supplies (Scientific and Medical)	195.9	160.3	195.9
4004	Safety	Firearms, ammunition, and other safety supplies	6.1	5.3	6.5
4005	Building Materials	Screws, lumber, nuts, bolts, and other building materials	20.1	17.5	32.5
4008	Aggregate	Aggregate Materials	0.7	0.5	0.7
4011	Electrical	Key-card readers, bulbs, batteries, and other electrical supplies	0.1	0.1	0.1
4013	Lube Oils/Grease/Solvents	Marine and motor oil, fuel stabilizer, and other lube oils, grease and solvents	6.2	5.4	6.6
4014	Bottled Gas	Propane, oxygen, and other bottled gases	1.4	1.3	1.5
4015	Parts and Supplies	Parts and supplies	140.5	119.2	145.0
4016	Paint/Preservatives	Paint and preservatives	3.6	2.6	3.8
4018	Surface Chemicals	Surface Chemicals	0.1	0.1	0.1
4019	Small Tools/Minor Equipment	Flat sockets, drill bits, hooks, hammers, and other small tools	13.2	10.0	14.1
4020	Equipment Fuel	Equipment fuel	234.5	255.1	275.5

**Line Item Detail (1676)**  
**Department of Fish and Game**  
**Capital Outlay**

**Component:** Westward Region Fisheries Management (2170)

<b>Line Number</b>	<b>Line Name</b>		<b>FY2022 Actuals</b>	<b>FY2023 Management Plan</b>	<b>FY2024 Governor</b>
5000	Capital Outlay		27.4	89.4	89.4
<b>Object Class</b>	<b>Servicing Agency</b>	<b>Explanation</b>	<b>FY2022 Actuals</b>	<b>FY2023 Management Plan</b>	<b>FY2024 Governor</b>
<b>5000 Capital Outlay Detail Totals</b>			<b>27.4</b>	<b>89.4</b>	<b>89.4</b>
5004	Equipment	Automobile and marine equipment	27.4	89.4	89.4

**Revenue Detail (1681)**  
**Department of Fish and Game**

**Component:** Westward Region Fisheries Management (2170)

Revenue Type (OMB Fund Code) Revenue Source	Component	Comment	FY2022 Actuals	FY2023 Management Plan	FY2024 Governor
<b>5002 Fed Rcpts (1002 Fed Rcpts)</b>			<b>1,930.2</b>	<b>2,743.1</b>	<b>2,773.7</b>
5010 Federal Natural Resources - Miscellaneous Grants		Federal receipts are primarily from the National Marine Fisheries Service (NOAA) and the US Fish and Wildlife Service (USFWS)	1,930.2	2,743.1	2,773.7
<b>5005 GF/Prgm (1005 GF/Prgm)</b>			<b>317.5</b>	<b>388.8</b>	<b>397.7</b>
5101 Program Receipts Public Protection - Licenses and Permits		Revenue from the sale of commercial crew licenses	317.5	388.8	397.7
<b>5007 I/A Rcpts (1007 I/A Rcpts)</b>			<b>30.0</b>	<b>70.0</b>	<b>70.0</b>
5301 Inter-Agency Receipts		RSA - Projects to be determined	0.0	40.0	40.0
5301 Inter-Agency Receipts	FishGm - Sport Fisheries (464)	RSA - Kodiak Maintenance	15.0	15.0	15.0
5301 Inter-Agency Receipts	FishGm - Wildlife Conservation (473)	RSA - Kodiak Maintenance	15.0	15.0	15.0
<b>5061 CIP Rcpts (1061 CIP Rcpts)</b>			<b>85.7</b>	<b>724.2</b>	<b>729.8</b>
5351 Capital Improvement Project Inter-Agency		Receipts for personal services associated with capital funded projects	85.7	724.2	729.8
<b>5108 Stat Desig (1108 Stat Desig)</b>			<b>855.6</b>	<b>1,355.3</b>	<b>1,375.3</b>
5201 Statutory Dsgntd Prgm Rcpts Pblc Prtctn - Permits and Fees		Buoy tag fees	12.2	24.4	24.4
5206 Statutory Designated Program Receipts - Contracts		Receipts from a variety of outside agencies including but not limited to: Pacific States Marine Fisheries Commission, North Pacific Research Board, and Kodiak Regional Aquaculture Association	807.6	1,295.1	1,315.1
5207 Statutory Dsgntd Prgm Rcpts Chrgrs for Srvcs - Rent/Royalties		Dutch Harbor Housing Payroll Deductions	35.8	35.8	35.8
<b>5109 Test Fish (1109 Test Fish)</b>			<b>4,644.4</b>	<b>2,261.9</b>	<b>1,289.7</b>
5401 Test Fisheries Receipts		Revenue received from the sale of	4,644.4	2,261.9	1,289.7

**Revenue Detail (1681)**  
**Department of Fish and Game**

**Component:** Westward Region Fisheries Management (2170)

Revenue Type (OMB Fund Code) Revenue Source	Component	Comment	FY2022 Actuals	FY2023 Management Plan	FY2024 Governor
		fish			
<b>5201 CFEC Rcpts (1201 CFEC Rcpts)</b>			<b>522.2</b>	<b>1.2</b>	<b>1.2</b>
5406 Commercial Fisheries Entry Commission Receipts		Revenue transferred from the Commercial Fisheries Entry Commission	522.2	1.2	1.2
<b>6004 Gen Fund (1004 Gen Fund)</b>			<b>0.3</b>	<b>0.0</b>	<b>0.0</b>
6046 General Fund - Prior Year Reimbursement Recovery		Prior-year recovery	0.3	0.0	0.0

**Inter-Agency Services (1682)**  
**Department of Fish and Game**

**Component:** Westward Region Fisheries Management (2170)

	FY2022 Actuals	FY2023 Management Plan	FY2024 Governor
<b>Component Totals</b>	<b>72.7</b>	<b>90.1</b>	<b>90.1</b>
With University of Alaska	11.1	25.1	25.1
With Department of Transportation/Public Facilities	61.6	65.0	65.0

Object Class	Servicing Agency	Explanation	FY2022 Actuals	FY2023 Management Plan	FY2024 Governor
3015	Inter-Agency Conservation/Environmental	Univ - Department-wide RSA - UAF Acoustic Tracking of Tanner Crab	11.1	25.1	25.1
3023	Inter-Agency Building Leases	Trans - Department-wide Building Leases Core Service	61.6	65.0	65.0

**Personal Services Expenditure Detail**  
**Department of Fish and Game**

**Scenario:** FY2024 Governor (19867)  
**Component:** Westward Region Fisheries Management (2170)  
**RDU:** Commercial Fisheries (143)

PCN	Job Class Title	Time Status	Retire Code	Barg Unit	Location	Salary Sched	Range / Step	Comp Months	Split / Count	Annual Salaries	COLA	Premium Pay	Annual Benefits	Total Costs	UGF Amount
11-0107	Biometrician 2	FT	A	GP	Kodiak	211	19D	8.0	*	54,899	2,048	4,500	35,231	96,678	0
11-0226	Fish & Wildlife Technician 3	PT	A	GP	Juneau	205	11B	0.4	*	1,417	49	0	1,172	2,638	0
11-1006	Fishery Biologist 3	FT	A	SS	Kodiak	211	18B / C	12.0		78,660	1,266	13,111	56,536	149,573	40,385
11-1030	Fish & Game Coordinator	FT	A	SS	Kodiak	99	22O	12.0		149,451	2,062	0	78,449	229,962	229,962
11-1031	Fishery Biologist 4	FT	A	SS	Kodiak	99	20O / P	12.0		125,582	1,733	0	69,381	196,696	196,696
11-1032	Fishery Biologist 3	FT	A	SS	Kodiak	211	18A	12.0		73,736	1,147	9,420	53,264	137,567	137,567
11-1033	Analyst/Programmer 3	FT	A	GP	Kodiak	211	18M	12.0		96,662	3,335	0	55,721	155,718	143,261
11-1035	Fishery Biologist 3	FT	A	SS	Kodiak	99	18N / O	12.0		105,210	1,603	10,982	65,814	183,609	183,609
11-1036	Fishery Biologist 3	FT	A	SS	Kodiak	211	18J / K	12.0		92,776	1,418	9,984	60,711	164,889	154,996
11-1037	Fishery Biologist 3	FT	A	SS	Dutch Harbor	260	18J	12.0		130,021	1,794	0	71,068	202,883	83,182
11-1057	Administrative Officer 1	FT	A	SS	Kodiak	211	17F / J	12.0		83,970	1,159	0	53,573	138,702	138,702
11-1058	Accounting Technician 2	FT	A	SS	Kodiak	611	14D / E	12.0		62,494	862	0	45,414	108,770	108,770
11-1110	Boat Officer 4	FT	A	SS	Kodiak	99	19O	12.0		115,395	1,915	23,408	74,404	215,122	215,122
11-1111	Boat Officer 3	FT	A	GP	Kodiak	211	17N / O	12.0		93,898	3,696	13,233	59,698	170,525	170,525
11-1112	Boat Officer 2	FT	A	GP	Kodiak	211	15M / N	12.0		79,342	3,133	11,467	53,497	147,439	147,439
11-1117	Fishery Biologist 1	FT	A	GP	Kodiak	211	14F	11.0	**	57,830	2,558	16,308	45,580	122,276	99,044
11-1118	Fishery Biologist 2	FT	A	SS	Kodiak	211	16L	12.0		84,011	1,169	672	53,844	139,696	139,696
11-1131	Fishery Biologist 1	PT	A	GP	Kodiak	211	14B / C	8.0		36,845	1,328	1,656	27,292	67,121	0
11-1135	Fishery Biologist 1	PT	A	GP	Dutch Harbor	260	14F / G	11.0		84,089	2,901	0	49,361	136,351	0
11-1144	Fishery Biologist 1	FT	A	GP	Kodiak	211	14A / B	12.0		53,322	1,839	0	39,256	94,417	0
11-1150	Fishery Biologist 1	PT	A	GP	Dutch Harbor	260	14A	7.0		43,771	1,510	0	27,711	72,992	0
11-1156	Fishery Biologist 1	PT	A	GP	Kodiak	211	14B	9.0		40,380	1,393	0	29,589	71,362	71,362
11-1157	Fishery Biologist 2	PT	A	SS	Kodiak	211	16M	9.0		65,052	898	0	40,968	106,918	106,918
11-1159	Fishery Biologist 2	FT	A	GP	Kodiak	99	16O	11.5	**	88,993	3,455	11,152	56,252	159,852	147,064
11-1160	Fish & Wildlife Technician 2	PT	A	GP	Kodiak	211	9D / E	4.0		14,242	862	10,753	15,828	41,685	41,685
11-1202	Fish & Game Coordinator	FT	A	SS	Kodiak	211	22F / J	12.0		116,894	1,730	8,450	69,291	196,365	139,419
11-1213	Fishery Biologist 3	FT	A	SS	Kodiak	99	18O / P	12.0		107,612	1,485	0	62,554	171,651	171,651
11-1214	Fish & Game Coordinator	FT	A	SS	Kodiak	211	22K	12.0		121,493	1,676	0	67,828	190,997	95,499
11-1215	Fishery Biologist 2	FT	A	SS	Kodiak	211	16F	12.0		76,336	1,053	0	50,673	128,062	128,062
11-1217	Boat Officer 3	FT	A	GP	Kodiak	99	17Q	11.4	**	104,790	4,911	37,660	72,165	219,526	195,378
11-1225	Analyst/Programmer 4	FT	A	GP	Kodiak	99	20Q	12.0		129,661	4,473	0	68,257	202,391	186,200
11-1226	Fishery Biologist 2	FT	A	SS	Dutch Harbor	260	16J	12.0		113,589	1,681	8,211	67,944	191,425	45,942
11-1252	Fish & Wildlife Technician 3	PT	A	GP	Kodiak	211	11A	5.0		18,021	749	3,692	16,165	38,627	0
11-1264	Fishery Biologist 2	FT	A	SS	Kodiak	211	16M	12.0		86,736	1,301	7,522	57,481	153,040	153,040
11-1265	Fishery Biologist 3	FT	A	SS	Kodiak	211	18K	12.0		93,142	1,409	8,985	60,471	164,007	164,007
11-1266	Accounting Technician 1	FT	A	GP	Kodiak	211	12J	12.0		58,013	2,001	0	41,038	101,052	101,052
11-1267	Office Assistant 1	PT	A	GP	Kodiak	211	8K	7.0		27,152	937	0	21,398	49,487	49,487
11-1275	Fishery Biologist 2	FT	A	SS	Kodiak	211	16B / C	12.0		66,593	928	653	47,219	115,393	115,393

Note: If a position is split, an asterisk (\*) will appear in the Split/Count column. If the split position is also counted in the component, two asterisks (\*\*) will appear in this column. [No valid job title] appearing in the Job Class Title indicates that the PCN has an invalid class code or invalid range for the class code effective date of this scenario.



**Personal Services Expenditure Detail**  
**Department of Fish and Game**

**Scenario:** FY2024 Governor (19867)  
**Component:** Westward Region Fisheries Management (2170)  
**RDU:** Commercial Fisheries (143)

PCN	Job Class Title	Time Status	Retire Code	Barg Unit	Location	Salary Sched	Range / Step	Comp Months	Split / Count	Annual Salaries	COLA	Premium Pay	Annual Benefits	Total Costs	UGF Amount
11-1312	Fish & Wildlife Technician 3	PT	A	GP	Kodiak	211	11A	4.0		14,417	508	299	11,923	27,147	0
11-1332	Fishery Biologist 3	FT	A	SS	Kodiak	99	18N	12.0		103,527	1,429	0	61,003	165,959	165,959
11-1342	Fish & Wildlife Technician 2	PT	A	GP	Sand Point	250	9A	3.0		12,943	447	0	9,667	23,057	23,057
11-1347	Fish & Wildlife Technician 3	PT	A	GP	Kodiak	211	11G	5.0		21,694	1,302	16,054	22,257	61,307	0
11-1351	Fishery Biologist 2	FT	A	SS	Dutch Harbor	260	16F	12.0		110,032	1,518	0	63,474	175,024	0
11-1352	Fishery Biologist 1	PT	A	GP	Port Moller	250	14B	1.0		6,063	282	2,098	4,684	13,127	13,127
11-1354	Fishery Biologist 2	FT	A	GP	Kodiak	99	16O / P	12.0		93,483	3,398	5,018	56,419	158,318	0
11-1355	Fishery Biologist 1	PT	A	GP	Kodiak	211	14K / L	11.0		63,505	2,306	3,337	42,809	111,957	94,044
11-1361	Fish & Wildlife Technician 3	PT	A	GP	Kodiak	211	11J	4.0		18,077	1,187	16,334	19,406	55,004	0
11-1399	Fishery Biologist 2	FT	A	SS	Kodiak	99	16N / O	12.0		93,278	1,401	8,242	60,240	163,161	163,161
11-1403	Fishery Biologist 1	PT	A	GP	Kodiak	211	14G / J	12.0		66,484	2,416	3,563	45,610	118,073	0
11-1407	Fishery Biologist 3	FT	A	SS	Kodiak	211	18C	12.0		78,894	1,089	0	51,644	131,627	131,627
11-1409	Fishery Biologist 1	PT	A	GP	Dutch Harbor	260	14A	7.0		43,771	1,510	0	27,711	72,992	0
11-1410	Fish & Wildlife Technician 3	PT	A	GP	Kodiak	211	11B	3.0		11,125	384	0	8,976	20,485	10,243
11-1414	Fish & Wildlife Technician 2	PT	A	GP	Kodiak	211	9A	1.0		3,193	110	0	2,796	6,099	6,099
11-1415	Aircraft Pilot 1	PT	A	GP	Kodiak	211	22J	12.0		115,089	4,601	18,287	69,668	207,645	120,434
11-1416	Fish & Wildlife Technician 3	PT	A	GP	Sand Point	250	11B	3.0		15,035	582	1,850	11,164	28,631	28,631
11-1417	Fishery Biologist 3	FT	A	SS	Kodiak	99	18P	12.0		110,376	1,537	988	63,980	176,881	176,881
11-1419	Fishery Biologist 1	FT	A	SS	Kodiak	211	14B / C	12.0		58,285	804	0	43,815	102,904	102,904
11-1428	Fishery Biologist 2	FT	A	SS	Kodiak	211	16B	12.0		66,414	988	5,200	48,879	121,481	0
11-1430	Aircraft Pilot 2	FT	A	GP	Kodiak	99	23O	12.0		149,554	6,052	34,020	87,306	276,932	276,932
11-1431	Fishery Biologist 1	PT	A	GP	Kodiak	211	14E	5.9		29,395	1,031	500	20,698	51,624	0
11-1432	Fishery Biologist 3	FT	A	SS	Kodiak	211	18F / J	12.0		89,022	1,228	0	55,492	145,742	0
11-1433	Fishery Biologist 1	PT	A	GP	Port Moller	250	14B	3.0		18,189	797	4,924	13,530	37,440	37,440
11-1447	Fishery Biologist 2	PT	A	GP	Kodiak	211	16C / D	10.0		55,323	1,909	0	36,849	94,081	37,632
11-1469	Fish & Wildlife Technician 3	PT	A	GP	Dutch Harbor	260	11D / E	4.0		22,779	786	0	14,987	38,552	0
11-1471	Fish & Wildlife Technician 2	PT	A	GP	Chignik	250	9B	4.0		17,784	1,082	13,571	18,245	50,682	0
11-1472	Fish & Wildlife Technician 2	PT	A	GP	Kodiak	211	9B	4.0		13,163	541	2,521	12,291	28,516	28,516
11-1479	Fish & Wildlife Technician 2	PT	A	GP	Kodiak	211	9B	4.0		13,163	464	273	11,437	25,337	0
11-1521	Fish & Wildlife Technician 2	PT	A	GP	Port Moller	250	9B	2.2		9,781	429	2,667	8,212	21,089	21,089
11-1572	Fish & Wildlife Technician 2	PT	A	GP	Chignik	250	9B	3.0		13,338	617	4,536	11,540	30,031	10,211
11-1591	Fish & Wildlife Technician 3	PT	A	GP	Kodiak	211	11B	4.0		14,833	1,240	21,098	19,983	57,154	41,722
11-1592	Fish & Wildlife Technician 4	FT	A	GP	Kodiak	211	13K / L	12.0		66,050	2,318	1,137	44,523	114,028	75,259
11-1594	Fish & Wildlife Technician 3	PT	A	GP	Kodiak	211	11C	5.0		19,086	707	1,409	15,702	36,904	0
11-1595	Fish & Wildlife Technician 3	PT	A	GP	Kodiak	211	11A	0.5		1,802	62	0	1,476	3,340	3,340
11-1596	Fish & Wildlife Technician 2	PT	A	GP	Kodiak	211	9B	2.0		6,581	290	1,822	6,359	15,052	15,052
11-1597	Fish & Wildlife Technician 3	PT	A	GP	Kodiak	211	11B / C	2.5		9,499	408	2,327	8,451	20,685	0
11-1598	Fish & Wildlife Technician 3	PT	A	GP	Kodiak	211	11B / C	1.0		3,741	247	3,423	4,305	11,716	0

Note: If a position is split, an asterisk (\*) will appear in the Split/Count column. If the split position is also counted in the component, two asterisks (\*\*) will appear in this column. [No valid job title] appearing in the Job Class Title indicates that the PCN has an invalid class code or invalid range for the class code effective date of this scenario.

**Personal Services Expenditure Detail**  
**Department of Fish and Game**

**Scenario:** FY2024 Governor (19867)  
**Component:** Westward Region Fisheries Management (2170)  
**RDU:** Commercial Fisheries (143)

PCN	Job Class Title	Time Status	Retire Code	Barg Unit	Location	Salary Sched	Range / Step	Comp Months	Split / Count	Annual Salaries	COLA	Premium Pay	Annual Benefits	Total Costs	UGF Amount
11-1601	Fish & Wildlife Technician 2	PT	A	GP	Kodiak	211	9A	2.0		6,386	262	1,208	6,051	13,907	13,907
11-1603	Fish & Wildlife Technician 3	FT	A	GP	Dutch Harbor	260	11N / O	12.0		90,154	3,110	0	53,248	146,512	0
11-1604	Fish & Wildlife Technician 3	PT	A	GP	Kodiak	211	11K	10.0		46,638	1,778	4,907	35,414	88,737	42,594
11-1611	Fish & Wildlife Technician 2	PT	A	GP	Kodiak	211	9B	3.0		9,872	352	318	8,621	19,163	9,390
11-1637	Fish & Wildlife Technician 3	PT	A	GP	Kodiak	211	11A	0.5		1,802	62	0	1,476	3,340	0
11-1652	Fish & Wildlife Technician 3	PT	A	GP	Kodiak	211	11B	3.0		11,125	482	2,841	10,055	24,503	24,503
11-1721	Fishery Biologist 4	FT	A	SS	Kodiak	211	20M	12.0		113,402	1,565	0	64,754	179,721	179,721
11-1776	Fish & Wildlife Technician 2	PT	A	GP	Kodiak	211	9B	4.0		13,163	547	2,680	12,352	28,742	28,742
11-1818	Fish & Wildlife Technician 3	PT	A	GP	Dutch Harbor	260	11A	4.0		20,781	717	0	14,228	35,726	0
11-1820	Fish & Wildlife Technician 3	PT	A	GP	Kodiak	211	11B	4.0		14,833	606	2,738	13,008	31,185	31,185
11-1826	Fish & Wildlife Technician 3	PT	A	GP	Port Moller	250	11J	2.0		12,214	526	3,043	8,963	24,746	24,746
11-1827	Fishery Biologist 1	PT	A	GP	Kodiak	211	14A	10.0		43,388	1,600	3,006	33,457	81,451	0
11-1833	Fishery Biologist 2	FT	A	GP	Kodiak	211	16D / E	12.0		67,330	2,536	6,175	46,923	122,964	122,964
11-1836	Fish & Wildlife Technician 2	PT	A	GP	Kodiak	211	9B	2.5		8,227	355	2,076	7,872	18,530	0
11-1843	Fish & Wildlife Technician 3	PT	A	GP	Kodiak	211	11B	2.0		7,417	274	530	6,186	14,407	0
11-1849	Fish & Wildlife Technician 2	PT	A	GP	Sand Point	250	9C	3.0		13,733	513	1,140	10,400	25,786	17,535
11-1857	Fishery Biologist 3	FT	A	SS	Kodiak	99	18N / O	12.0		106,752	1,763	21,006	70,208	199,729	0
11-1893	Fishery Biologist 2	FT	A	GP	Kodiak	211	16F / G	12.0		72,028	2,867	11,083	50,572	136,550	0
11-1899	Fish & Wildlife Technician 1	PT	A	GP	Chignik	250	7E	2.5		10,786	372	0	6,077	17,235	0
11-1906	Fish & Wildlife Technician 3	PT	A	GP	Sand Point	250	11A	1.0		4,870	354	5,394	5,483	16,101	0
11-1921	Fishery Biologist 1	PT	A	GP	Kodiak	211	14F / G	10.0		52,255	2,011	6,049	37,982	98,297	0
11-1932	Fishery Biologist 1	PT	A	GP	Dutch Harbor	260	14E / F	7.0		50,668	1,899	4,388	31,998	88,953	0
11-1942	Fishery Biologist 1	PT	A	GP	Kodiak	211	14A	11.0		47,726	2,083	12,650	40,352	102,811	43,181
11-1953	Fish & Wildlife Technician 3	PT	A	GP	Port Moller	250	11B	3.0		15,035	662	4,163	12,043	31,903	31,903
11-1957	Fish & Wildlife Technician 2	PT	A	GP	Port Moller	250	9B	3.0		13,338	524	1,846	10,518	26,226	18,358
11-1959	Fish & Wildlife Technician 2	PT	A	GP	Port Moller	250	9B	3.0		13,338	556	2,770	10,869	27,533	27,533
11-1961	Fishery Biologist 2	FT	A	SS	Kodiak	99	16O	12.0		93,402	1,387	7,141	59,869	161,799	161,799
11-1962	Fish & Wildlife Technician 3	PT	A	GP	Port Moller	250	11A	1.8		8,766	386	2,419	7,099	18,670	18,670
11-1963	Fish & Wildlife Technician 3	PT	A	GP	Kodiak	211	11E	7.0		28,460	1,040	1,676	22,531	53,707	0
11-1965	Fish & Wildlife Technician 2	PT	A	GP	Kodiak	211	9B / C	4.0		13,523	555	2,551	12,439	29,068	29,068
11-1966	Mts/Bfc Jrny 1	PT	A	LL	Kodiak	2DD	53F	9.0		44,402	2,528	11,961	35,867	94,758	94,758
11-1967	Fishery Biologist 1	PT	A	GP	Dutch Harbor	260	14E / F	11.0		79,660	2,942	5,625	49,815	138,042	0
11-1969	Fish & Wildlife Technician 2	PT	A	GP	Chignik	250	9B	2.5		11,115	898	14,909	13,845	40,767	0
11-1978	Fish & Wildlife Technician 3	PT	A	GP	Juneau	205	11C	0.4	*	1,444	50	0	1,182	2,676	0
11-2219	Mts/Bfc Jrny 2	FT	A	LL	Kodiak	2DD	51C / D	12.0		64,982	2,914	0	43,959	111,855	111,855
11-4018	Fish & Wildlife Technician 3	PT	A	GP	Kodiak	211	11B / C	5.0		18,563	962	9,337	18,515	47,377	0
11-5044	Administrative Assistant 2	FT	A	GP	Kodiak	211	14K / L	12.0		69,986	2,414	0	45,586	117,986	117,986
11-5052	Fishery Biologist 2	FT	A	SS	Kodiak	211	16J / K	12.0		78,898	1,216	9,200	55,141	144,455	144,455
11-5069	Data Processing Technician	PT	A	GP	Juneau	205	13C	0.9	*	3,768	130	0	2,856	6,754	0

Note: If a position is split, an asterisk (\*) will appear in the Split/Count column. If the split position is also counted in the component, two asterisks (\*\*) will appear in this column. [No valid job title] appearing in the Job Class Title indicates that the PCN has an invalid class code or invalid range for the class code effective date of this scenario.

**Personal Services Expenditure Detail**  
**Department of Fish and Game**

**Scenario:** FY2024 Governor (19867)  
**Component:** Westward Region Fisheries Management (2170)  
**RDU:** Commercial Fisheries (143)

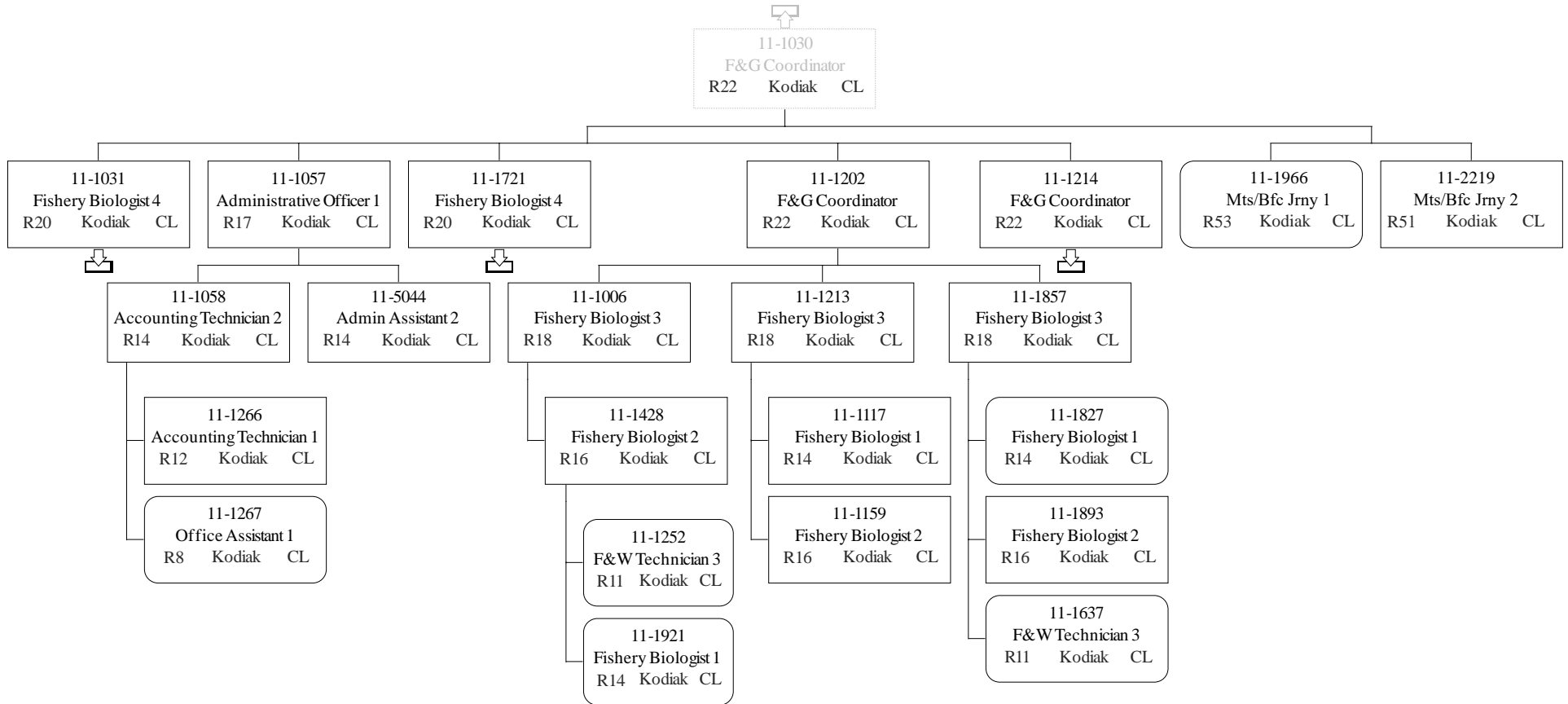
PCN	Job Class Title	Time Status	Retire Code	Barg Unit	Location	Salary Sched	Range / Step	Comp Months	Split / Count	Annual Salaries	COLA	Premium Pay	Annual Benefits	Total Costs	UGF Amount
	1														
11-5088	Fishery Biologist 2	FT	A	GP	Dutch Harbor	260	16G	12.0		106,334	3,668	0	59,395	169,397	84,699
11-5191	Fish & Wildlife Technician 2	PT	A	GP	Kodiak	211	9B	2.0		6,581	243	470	5,845	13,139	0
11-5192	Fish & Wildlife Technician 3	PT	A	GP	Kodiak	211	11C	4.0		15,269	648	3,523	13,472	32,912	32,912
11-5256	Fish & Wildlife Technician 2	PT	A	GP	Port Moller	250	9B	2.0		8,892	399	2,682	7,563	19,536	19,536
11-5270	Fishery Biologist 2	FT	A	SS	Kodiak	99	16N	12.0		90,461	1,248	0	56,039	147,748	147,748
11-5284	Fish & Wildlife Technician 2	PT	A	GP	Kodiak	211	9F / G	4.5		16,850	699	3,423	14,826	35,798	35,798
11-5287	Fish & Wildlife Technician 2	PT	A	GP	Kodiak	211	9A	5.0		15,966	556	147	14,037	30,706	0
11-5297	Fish & Wildlife Technician 3	PT	A	GP	Kodiak	211	11A	5.5		19,823	684	0	16,238	36,745	36,745
11-5305	Fish & Wildlife Technician 3	PT	A	GP	Port Moller	250	11B	2.3		11,526	544	4,244	9,632	25,946	25,946
11-5308	Fishery Biologist 1	PT	A	GP	Kodiak	211	14B / C	11.0		49,942	1,924	5,839	38,607	96,312	35,635
11-5309	Fish & Wildlife Technician 3	PT	A	GP	Sand Point	250	11B	3.0		15,035	710	5,551	12,570	33,866	0
11-5323	Fish & Wildlife Technician 3	PT	A	GP	Dutch Harbor	260	11A	4.0		20,781	717	0	14,228	35,726	35,726
11-5335	Fish & Wildlife Technician 3	PT	A	GP	Kodiak	211	11B / C	5.0		18,803	660	342	15,189	34,994	0
11-7092	Fishery Biologist 2	FT	A	GP	Dutch Harbor	260	16O / P	12.0		133,419	4,735	3,850	71,147	213,151	0
11-7095	Fish & Wildlife Technician 2	PT	A	GP	Kodiak	211	9B / C	5.5		18,128	931	8,845	18,955	46,859	0

<b>Total</b>				<b>Total Salary Costs:</b>	6,622,888
	<b>Positions</b>	<b>New</b>	<b>Deleted</b>	<b>Total COLA:</b>	181,638
<b>Full Time Positions:</b>	51	0	0	<b>Total Premium Pay:</b>	591,063
<b>Part Time Positions:</b>	75	0	0	<b>Total Benefits:</b>	4,385,166
<b>Non Permanent Positions:</b>	0	0	0		
<b>Positions in Component:</b>	126	0	0	<b>Total Pre-Vacancy:</b>	11,780,755
				<b>Minus Vacancy Adjustment of 1.80%:</b>	(212,455)
				<b>Total Post-Vacancy:</b>	11,568,300
<b>Total Component Months:</b>	985.3			<b>Plus Lump Sum Premium Pay:</b>	0
				<b>Personal Services Line 100:</b>	11,568,300

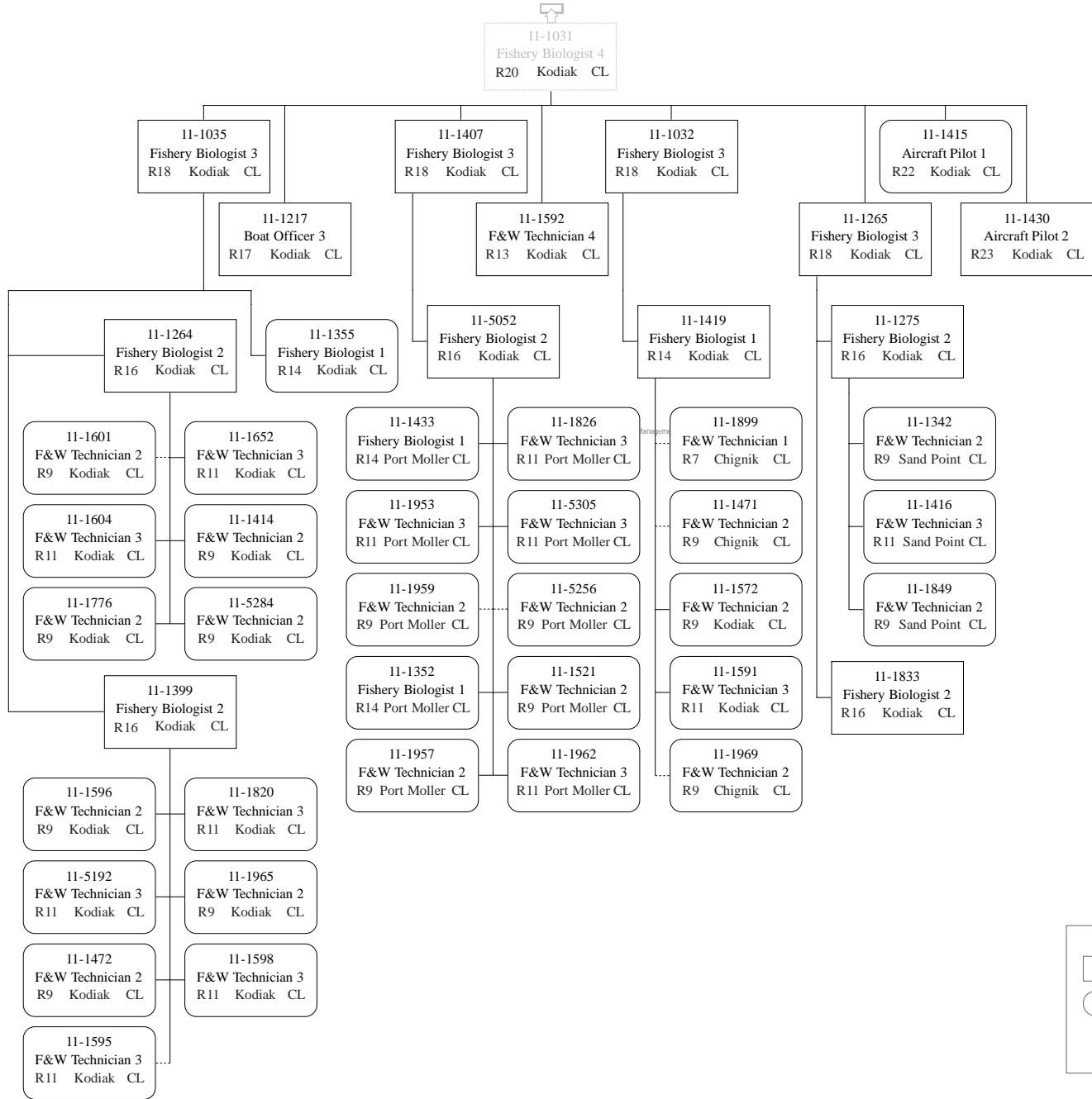
<b>PCN Funding Sources:</b>	<b>Pre-Vacancy</b>	<b>Post-Vacancy</b>	<b>Percent</b>
1002 Federal Receipts	1,472,960	1,446,397	12.50%
1004 General Fund Receipts	7,434,069	7,300,003	63.10%
1005 General Fund/Program Receipts	401,127	393,893	3.40%
1061 Capital Improvement Project Receipts	288,139	282,943	2.45%
1108 Statutory Designated Program Receipts	871,764	856,042	7.40%
1109 Test Fisheries Receipts	1,312,696	1,289,022	11.14%
<b>Total PCN Funding:</b>	<b>11,780,755</b>	<b>11,568,300</b>	<b>100.00%</b>

Note: If a position is split, an asterisk (\*) will appear in the Split/Count column. If the split position is also counted in the component, two asterisks (\*\*) will appear in this column. [No valid job title] appearing in the Job Class Title indicates that the PCN has an invalid class code or invalid range for the class code effective date of this scenario.

Department of Fish & Game  
 2170 - Westward Region Fisheries Management  
 FY2024 Governor Budget

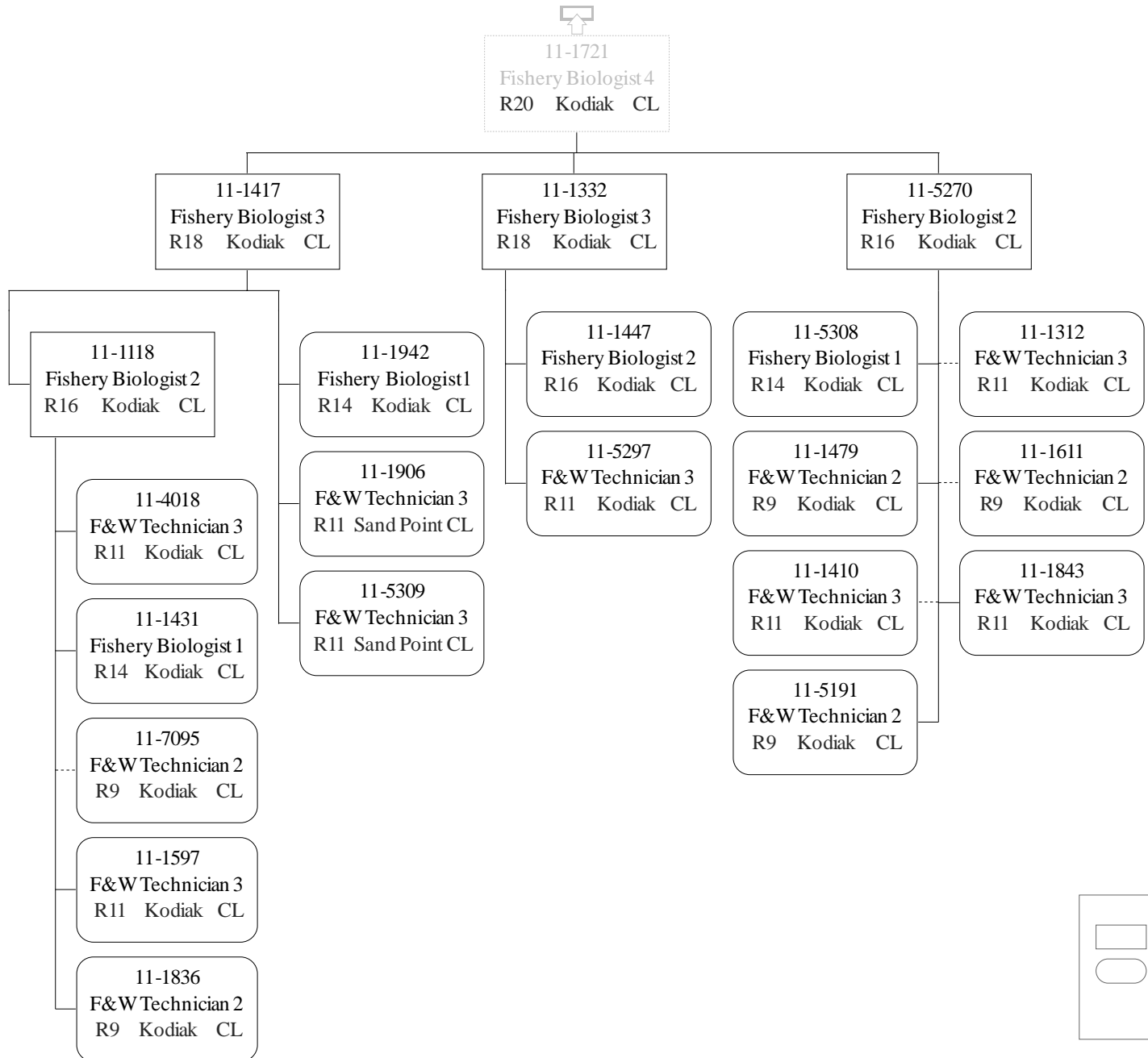


Department of Fish & Game  
 2170 - Westward Region Fisheries Management  
 FY2024 Governor Budget



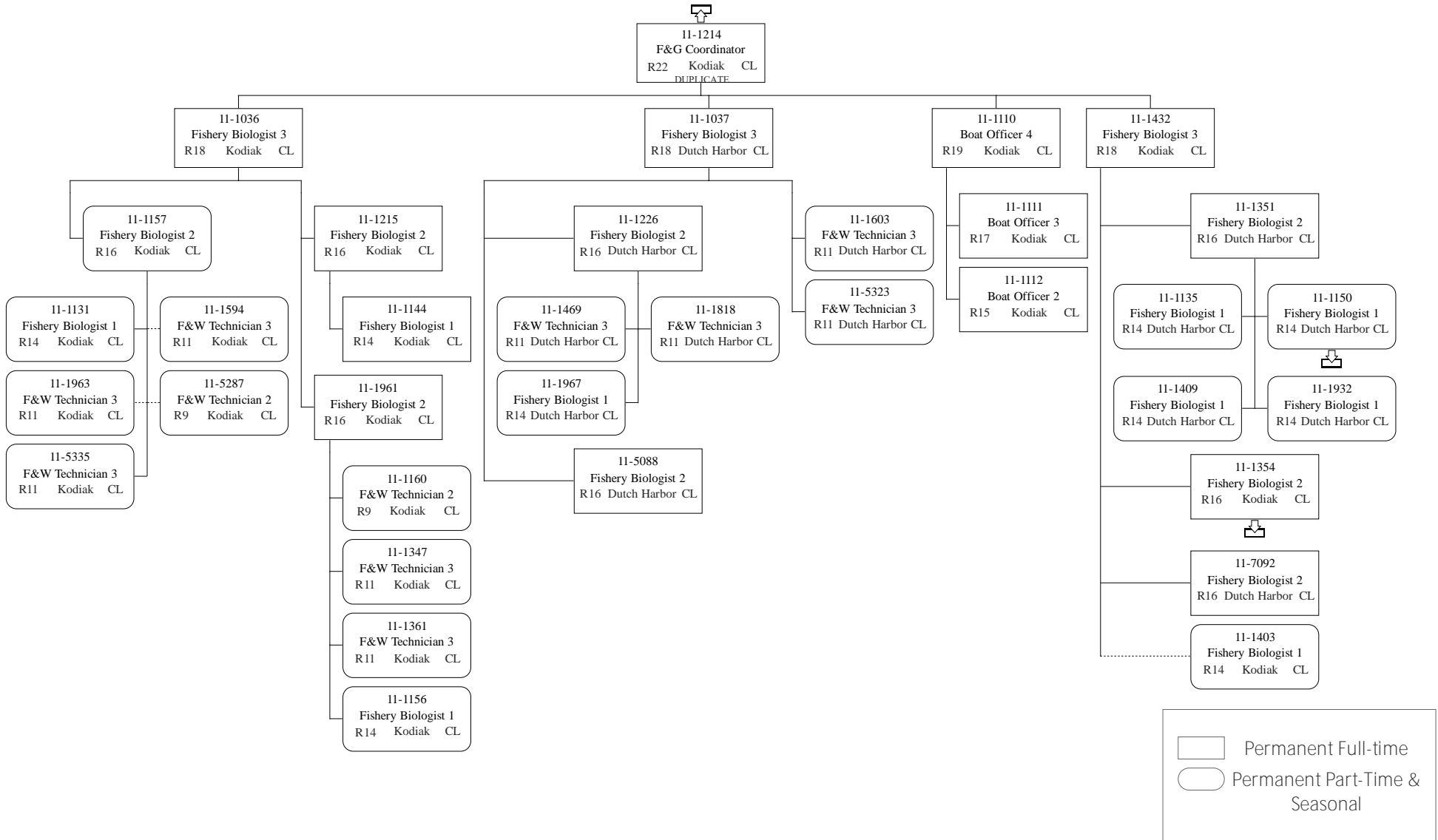
<span style="border: 1px solid black; display: inline-block; width: 20px; height: 10px;"></span>	Permanent Full-time
<span style="border: 1px solid black; border-radius: 10px; display: inline-block; width: 20px; height: 10px;"></span>	Permanent Part-Time & Seasonal

Department of Fish & Game  
 2170 - Westward Region Fisheries  
 Management FY2024 Governor Budget




Permanent Full-time  
 Permanent Part-Time & Seasonal

Department of Fish & Game  
 2170 - Westward Region Fisheries Management  
 FY2024 Governor Budget



Department of Fish & Game  
2170 - Westward Region Fisheries Management  
FY2024 Governor Budget

  
11-1354  
Fishery Biologist 2  
R16 Kodiak CL

 Permanent Full-time  
 Permanent Part-Time &  
Seasonal



Department of Fish & Game  
2170 - Westward Region Fisheries Management  
FY2024 Governor Budget

