

State of Alaska FY2024 Governor's Operating Budget

Department of Health Nursing Component Budget Summary

Component: Nursing

Contribution to Department's Mission

Deliver public health nursing services to individuals and families, groups, communities, and systems.

Core Services

- Link people to needed personal health services, identify health service gaps, and provide selected preventive health care services when otherwise unavailable.
- Identify and investigate health problems and public health hazards in the community.
- Inform, educate, and empower people about issues of public health importance such as prevention and control of infectious diseases, obesity, chronic disease, interpersonal/domestic violence, unintentional injury, and the positive life-long health impact of immunizations.
- Mobilize community partnerships to identify and solve health problems through collective impact.
- Develop and implement plans that support individual and community health efforts to create healthy communities and environments.
- Evaluate effectiveness, accessibility, and quality of public health nursing services.

Major Component Accomplishments in 2022

- Public Health Nurses contribute to the health of Alaskans working at an individual/family, community, and system level. Public Health Nurses are the local public health presence in Alaska, working across the state on local public health initiatives, including outbreak response, emergency preparedness, community education, advocacy, and targeted outreach to vulnerable populations.
- Improved access for vulnerable populations by expanding eligibility for clinical services to all ages.
- Provided direct care to 10,420 clients for a total of 18,335 visits across Alaska in FY2022, targeting individuals and families unable to access preventative or infectious disease related health care, preventing further disease spread, improving quality of life, and lowering overall health care costs.
- Provided public health expertise, leadership, and education through 153 community events, directly reaching 1,575 community and system partners during FY2022.
- Restructured Public Health Nursing service delivery and data reporting regions to mirror regions used by the Division of Behavioral Health to better align funding opportunities with local needs as well as improve efficiencies and collaboration.
- Expanded the COVID-19 Helpline to include monkeypox and influenza, assisting more than 23,000 individuals and providers, answering questions, and providing linkages to vaccines, treatment, and testing.
- Provided subject matter expertise to support more than 100 communities in improving their emergency readiness.
- Opioid Misuse
 - Implemented a new initiative in partnership with Alaska's industrial workforce to distribute approximately 200 opioid emergency boxes across Alaska.
 - Supported local community opioid response efforts with over 800 staff hours supporting activities such as outreach and education since August of 2021.
- Respiratory Infectious Diseases
 - Utilized targeted services, such as vaccines for COVID-19 and influenza, to support the health care system during the COVID-19 pandemic response.
 - Coordinated with state, Tribal, and local partners to provide technical assistance on reducing the spread of COVID-19 at the community level to reduce the negative impact on tourism, fishing, and mining.
 - Traveled to 41 sites, including into remote Alaska by boat and small plane, to educate Alaskans about vaccines that reduce the severity of illness and / or prevent and control the spread of infectious diseases. Alaskans that are homebound and those residing in senior living and long-term care facilities were served.
 - Supported local COVID-19 responses, logging more than 2,500 hours to support communities by providing education and consultation to groups such as Emergency Operations Centers, schools,

industries (such as fishing and tourism), local businesses, and childcare providers.

- Monkeypox
 - Responded to the monkeypox outbreak, in collaboration with partners, to provide state-wide access to vaccine, testing, treatment, contact tracing, and monitoring for monkeypox while address geographic and other equity challenges in our state.
- Tuberculosis
 - Responded to a surge of new infections of tuberculosis, in collaboration with the Section of Epidemiology and local partners.
 - Provided education, screening, surveillance, and contact and source-case investigations.
 - Ensured effective treatment for clients with tuberculosis through intensive case management in collaboration with local providers.
 - Tested 587 individuals in the first quarter of FY2023, just eight tests shy of total tests completed the entire previous fiscal year.
 - Partnered with the Section of Epidemiology for eight village trips in the Norton Sound and Yukon Kuskokwim to complete mass testing with four trips completed and four more trips planned for fall 2022.

Key Component Challenges

- Staff are restarting some of the pre-pandemic local initiatives and partnerships to identify and address local health priorities and their root causes. Returning to this work and building engagement with local partners around these factors takes local interest and engagement. Many of these partners are also recovering from the pandemic.
- Recruitment of staff, particularly nurses, continues to be a challenge due to national shortages of eligible applicants adding to the challenge of recruiting into geographically remote locations of Alaska.
- Modernized data and informatics is a continued priority to reduce inefficiencies and provide timely and meaningful ways to assess trends and impacts.

Significant Changes in Results to be Delivered in FY2024

- No significant changes in results to be delivered.

Statutory and Regulatory Authority

AS 09.55.556	Informed Consent
AS 09.65.161	Immunity for Disclosure of Required Health Care Data
AS 11.41.360	Human Trafficking - criminal definitions
AS 11.41.432	Defenses - exclusion of marriage as defense for sexual abuse
AS 11.41.434-440	Sexual Abuse of a Minor
AS 11.66.110-150	Sex Trafficking/Promoting Prostitution
AS 14.07.020	Duties of the Department of Education and Early Development
AS 14.30.065-125,127,191,231	Physical Examinations and Screening Examinations
AS 18.05	Administration of Public Health and Related Laws
AS 18.05.042	Access to Healthcare Records
AS 18.09.200	Statewide immunization program
AS 18.15	Disease Control and Threats to Public Health / Public Health Authority and Powers
AS 18.23.400	Health Care Services and Price Information
AS 18.23.005	Patient Records - patient right of access
AS 18.23.010-070	Health Care Services Information and Review Organizations
AS 18.23.100, 300-325	Form of Medical records and electronic information exchange security
AS 18.29	Healthcare Provider Loan Repayment and Incentive Program
AS 18.50.350	Duty to Furnish Information to Vital Stats
AS 18.60.010-075	Prevention of Accident and Health Hazards - general employer responsibilities
AS 18.60.880-890	Needle stick and sharps injury protections for health care workers
AS 25.20.010	Age of majority
AS 25.20.025	Examination and Treatment of Minors
AS 25.20.20	Arrival at majority upon marriage
AS 25.23.130, 160	Effect of adoption decree, foreign adoption same effect

AS 25.24.150	Child Custody during/after divorce
AS 26.23	Alaska Disaster Act
AS 36.30.310	Emergency Procurements
AS 40.25.110, 115	Public Records - copying, fees, applicable to electronic records
AS 40.25.120	Public Records: exceptions; certified copies
AS 40.25.125	Public Record Disclosures
AS 44.29.020	Duties of the Department of Health
AS 44.29.022, 024	Fees for services of department and grantees
AS 47.05.010-050	Federal classifications for disease and federal rates, ability to set policy for records, cooperate with feds
AS 47.05.060-065	Purpose and policy Relating to Children
AS 47.07.010-030	Medical Assistance for Needy Person
AS 47.17.010-290	Child Protection
AS 47.18.010-200	Comprehensive reproductive planning
AS 47.20.300-390	Newborn and Infant Hearing Screening, Tracking and Intervention Program
AS 47.24.900	Protection for Vulnerable Adults
04 AAC 06.055	Immunizations required for school entry
07 AAC 05.931	Birth certificate disclosure to immunization registries
07 AAC 12.650	Employee Health Program - TB testing; Rubella & Hepatitis B immunity
07 AAC 12.830	Mailing of laboratory specimens
07 AAC 23.010-.900	Programs for Children with Disabilities
07 AAC 24	Health Care Professional Loan Repayment and Incentives
07 AAC 26.280, .390, .735	Emergency Medical Services - Actions not prohibited
07 AAC 27	Preventative Medical Services
07 AAC 43	Medical Assistance
07 AAC 50.455	Health in Child Care Facilities & Full Time Care Facilities
07 AAC 57.545	Reducing the spread of disease
07 AAC 57.550	Child Care Regulations - Health (includes immunizations)
07 AAC 78	Grant Programs
07 AAC 80	Fees for Department Services
12 AAC 02.280-282	Board of Nursing - licensing fees
12 AAC 44	Board of Nursing, including Advanced Nurse Practitioner
42 CFR 72 & 73	Possession, Use, & Transfer of Select Agents & Toxins (Select Agents Rule)
PL 106-386	Trafficking Victims Protection Act 2000
PL 104-191	Health Insurance Portability and Accountability Act (HIPAA) of 1996
PL 107-188	Public Health Security and Bioterrorism Act of 2002
Title X	Family Planning Program

Contact Information

Contact: Sylvan Robb, Division Director
Phone: (907) 465-1630
E-mail: sylvan.robbs@alaska.gov

Nursing Personal Services Information				
Authorized Positions			Personal Services Costs	
	<u>FY2023</u> <u>Management</u> <u>Plan</u>	<u>FY2024</u> <u>Governor</u>		
Full-time	157	157	Annual Salaries	13,598,663
Part-time	2	2	COLA	421,024
Nonpermanent	0	0	Premium Pay	428
			Annual Benefits	8,056,827
			<i>Less 4.78% Vacancy Factor</i>	(1,056,042)
			Lump Sum Premium Pay	0
Totals	159	159	Total Personal Services	21,020,900

Position Classification Summary					
Job Class Title	Anchorage	Fairbanks	Juneau	Others	Total
Accounting Technician 1	1	0	0	0	1
Administrative Assistant 1	0	1	0	0	1
Administrative Assistant 2	0	0	1	0	1
Administrative Assistant 3	1	1	1	2	5
Administrative Officer 2	1	0	0	0	1
Health Program Associate	1	1	1	1	4
Nurse 2	0	0	0	2	2
Nurse Consultant 2	3	0	1	0	4
Office Assistant 1	0	0	2	5	7
Office Assistant 2	1	6	3	17	27
Office Assistant 4	0	1	1	4	6
Phy Asst/Aprn 1	0	1	0	3	4
Program Coordinator 1	1	0	0	0	1
Public Health Informaticist 2	1	0	0	0	1
Public Health Nurse 1	0	1	0	3	4
Public Health Nurse 2	0	11	4	20	35
Public Health Nurse 3	5	5	4	23	37
Public Health Nurse 4	1	2	1	4	8
Public Health Nurse 5	1	1	1	2	5
Public Health Nurse 6	1	0	0	0	1
Public Health Nurse Aide	0	1	0	2	3
Research Analyst 3	0	0	0	1	1
Totals	18	32	20	89	159

Component Detail All Funds
Department of Health

Component: Nursing (288)
RDU: Public Health (502)

Non-Formula Component

	FY2022 Actuals	FY2023 Conference Committee	FY2023 Authorized	FY2023 Management Plan	FY2024 Governor	FY2023 Management Plan vs FY2024 Governor	
71000 Personal Services	15,330.4	21,736.3	21,736.3	20,058.2	21,020.9	962.7	4.8%
72000 Travel	233.6	508.5	508.5	528.8	578.8	50.0	9.5%
73000 Services	5,535.0	4,347.0	4,347.0	5,374.2	5,374.2	0.0	0.0%
74000 Commodities	283.6	474.4	474.4	805.0	855.0	50.0	6.2%
75000 Capital Outlay	0.0	0.0	0.0	0.0	0.0	0.0	0.0%
77000 Grants, Benefits	4,489.5	4,489.5	4,489.5	4,789.5	4,789.5	0.0	0.0%
78000 Miscellaneous	0.0	0.0	0.0	0.0	0.0	0.0	0.0%
Totals	25,872.1	31,555.7	31,555.7	31,555.7	32,618.4	1,062.7	3.4%
Fund Sources:							
1002 Fed Rcpts (Fed)	4,415.8	0.0	0.0	0.0	0.0	0.0	0.0%
1003 G/F Match (UGF)	21,428.4	0.0	0.0	0.0	0.0	0.0	0.0%
1005 GF/Prgm (DGF)	27.9	0.0	0.0	0.0	0.0	0.0	0.0%
1002 Fed Rcpts (Fed)	0.0	6,186.4	6,186.4	6,296.4	6,427.0	130.6	2.1%
1003 G/F Match (UGF)	0.0	24,080.1	24,080.1	24,080.1	24,427.2	347.1	1.4%
1004 Gen Fund (UGF)	0.0	520.0	520.0	520.0	1,105.0	585.0	112.5%
1005 GF/Prgm (DGF)	0.0	654.2	654.2	654.2	654.2	0.0	0.0%
1007 I/A Rcpts (Other)	0.0	115.0	115.0	5.0	5.0	0.0	0.0%
Unrestricted General (UGF)	21,428.4	24,600.1	24,600.1	24,600.1	25,532.2	932.1	3.8%
Designated General (DGF)	27.9	654.2	654.2	654.2	654.2	0.0	0.0%
Other Funds	0.0	115.0	115.0	5.0	5.0	0.0	0.0%
Federal Funds	4,415.8	6,186.4	6,186.4	6,296.4	6,427.0	130.6	2.1%
Positions:							
Permanent Full Time	157	157	157	157	157	0	0.0%
Permanent Part Time	2	2	2	2	2	0	0.0%
Non Permanent	0	0	0	0	0	0	0.0%

Change Record Detail - Multiple Scenarios with Descriptions
Department of Health

Component: Nursing (288)
RDU: Public Health (502)

Scenario/Change Record Title	Trans Type	Totals	Personal Services	Travel	Services	Commodities	Capital Outlay	Grants, Benefits	Miscellaneous	Positions		NP
										PFT	PPT	
***** Changes From FY2023 Conference Committee To FY2023 Authorized *****												
FY2023 Conference Committee												
	ConfCom	31,555.7	21,736.3	508.5	4,347.0	474.4	0.0	4,489.5	0.0	157	2	0
1002 Fed Rcpts		6,186.4										
1003 G/F Match		24,080.1										
1004 Gen Fund		520.0										
1005 GF/Prgm		654.2										
1007 I/A Rcpts		115.0										
Subtotal		31,555.7	21,736.3	508.5	4,347.0	474.4	0.0	4,489.5	0.0	157	2	0
***** Changes From FY2023 Authorized To FY2023 Management Plan *****												
Transfer to Emergency Programs for the Homelessness Project												
	Trout	-110.0	0.0	0.0	-110.0	0.0	0.0	0.0	0.0	0	0	0
1007 I/A Rcpts		-110.0										
Transfer interagency receipt authority from Nursing to Emergency Programs for a reimbursable services agreement related to the Homelessness Project. Funding for the Homelessness Project was appropriated to the Commissioner's Office, but Public Health staff will be responsible for the project. As a result, a new Epidemiology Specialist 2 (06-2423) will be supported in FY2023 through a reimbursable services agreement with the Commissioner's Office. Nursing can support their interagency needs with the remaining authority.												
Transfer from Emergency Programs to Serve Medicaid Recipients												
	Trin	110.0	0.0	0.0	110.0	0.0	0.0	0.0	0.0	0	0	0
1002 Fed Rcpts		110.0										
Transfer federal authority from Emergency Programs to Nursing due to an estimated increase in the number of Medicaid recipients served.												
Align Authority with Anticipated Expenditures												
	LIT	0.0	-1,678.1	20.3	1,027.2	330.6	0.0	300.0	0.0	0	0	0
Transfer authority from personal services to cover anticipated travel, services, commodities, and grants costs. The remaining personal services authority is sufficient to cover anticipated expenditures.												
Subtotal		31,555.7	20,058.2	528.8	5,374.2	805.0	0.0	4,789.5	0.0	157	2	0
***** Changes From FY2023 Management Plan To FY2024 Governor *****												
FY2024 Salary and Health Insurance Increases												
	SalAdj	437.4	437.4	0.0	0.0	0.0	0.0	0.0	0.0	0	0	0
1002 Fed Rcpts		119.1										
1003 G/F Match		318.3										

Change Record Detail - Multiple Scenarios with Descriptions
Department of Health

Component: Nursing (288)
RDU: Public Health (502)

Scenario/Change Record Title	Trans Type	Totals	Personal Services	Travel	Services	Commodities	Capital Outlay	Grants, Benefits	Miscellaneous	Positions		
										PFT	PPT	NP
FY2024 Salary and Health Insurance Increases: \$437.4												
FY2024 GGU cost of living increase 2.5%: \$371.7												
FY2024 SU cost of living increase 1%: \$28.9												
FY2024 AlaskaCare insurance from \$1,685 to \$1,793 per member per month.: \$28.1												
FY2024 GGU health insurance increase from \$1,567.50 to \$1,573.50 per member per month.: \$8.7												
FY2024 PERS Rate Adjustment												
	SalAdj	40.3	40.3	0.0	0.0	0.0	0.0	0.0	0.0	0	0	0
1002 Fed Rcpts		11.5										
1003 G/F Match		28.8										
FY2024 PERS rate adjustment to 25.10%: \$40.3												
Adopt Recommendations in the Alaska Tuberculosis Elimination Plan												
	Inc	585.0	485.0	50.0	0.0	50.0	0.0	0.0	0.0	0	0	0
1004 Gen Fund		585.0										
Alaska continues to have the highest rate of tuberculosis (TB) in the U.S. During the first half of the 20th century, an epidemic of TB devastated Alaska's indigenous peoples, who continue to bear a disproportionate burden of disease today. The Alaska TB Elimination Plan outlines strategies to decrease TB incidence in Alaska Native people by 25% by 2031.												
As part of the Healthy Families Initiative, this work will be implemented by expanding the targeted TB screening/treatment capacity statewide in order to detect and treat latent TB before it becomes active and infectious. The department will also support efforts to recruit qualified public health nurses to rural high-incidence parts of the state, incentive programs to increase staff retention, expand electronic Directly Observed Therapy (eDOT) pilot program, and comprehensively evaluate epidemiology of endemic TB in rural Alaska (including factors such as housing shortages and economic challenges).												
	Totals	32,618.4	21,020.9	578.8	5,374.2	855.0	0.0	4,789.5	0.0	157	2	0

Line Item Detail (1676)
Department of Health & Social Services
Travel

Component: Nursing (288)

Line Number	Line Name		FY2022 Actuals	FY2023 Management Plan	FY2024 Governor
2000	Travel		233.6	0.0	0.0
Object Class	Servicing Agency	Explanation	FY2022 Actuals	FY2023 Management Plan	FY2024 Governor
2000 Travel Detail Totals			233.6	0.0	0.0
2000	In-State Employee Travel	In state employee travel to deliver public health nursing services to Alaskans in more than 250 communities on a year round basis. Expenses include airfare, lodging, meal and incidentals, and other transportation costs.	219.5	0.0	0.0
2002	Out of State Employee Travel	Public Health Nursing Chief travel to out-of-state conference	6.7	0.0	0.0
2005	Moving Costs	Moving costs for hard-to-fill positions	3.9	0.0	0.0
2006	Other Travel Costs		3.5	0.0	0.0

Line Item Detail (1676)
Department of Health & Social Services
Services

Component: Nursing (288)

Line Number	Line Name		FY2022 Actuals	FY2023 Management Plan	FY2024 Governor
3000	Services		5,535.0	0.0	0.0
Object Class	Servicing Agency	Explanation	FY2022 Actuals	FY2023 Management Plan	FY2024 Governor
3000 Services Detail Totals			5,535.0	0.0	0.0
3000	Education Services	Training and conference registration for staff, memberships, and employee tuition.	30.4	0.0	0.0
3001	Financial Services	Financial services	1.0	0.0	0.0
3003	Information Technology	Department of Administration Enterprise Technology Services, Enterprise Productivity Rate computer and phone, Microsoft licensing, MICS (software program), PBX (phones system), Virtual Private Network (VPN) accounts, etc.	71.8	0.0	0.0
3004	Telecommunications	Telephone services i.e., long distance, local/equipment, data/network, cellular phones, and other wireless charges.	176.1	0.0	0.0
3005	Health Services	Laboratory test kits	0.3	0.0	0.0
3006	Delivery Services	Postage and Courier	35.9	0.0	0.0
3008	Utilities	Electric, sewer, water, garbage disposal and heating fuel for health centers.	177.4	0.0	0.0
3009	Structure/Infrastructure/Land	Maintenance and leases for health centers.	491.1	0.0	0.0
3010	Equipment/Machinery	Miscellaneous repairs, maintenance and calibration of equipment used at the public health centers.	49.2	0.0	0.0
3017	Inter-Agency Information Technology Non-Telecommunications	Admin - Department-wide technology non-telecommunications	1,118.4	0.0	0.0

Line Item Detail (1676)
Department of Health & Social Services
Services

Component: Nursing (288)

Object Class		Servicing Agency	Explanation	FY2022 Actuals	FY2023 Management Plan	FY2024 Governor
3000 Services Detail Totals				5,535.0	0.0	0.0
			chargeback.			
3017	Inter-Agency Information Technology Non-Telecommunications	H&SS - Information Technology Services (2754)	Resource and Patient Management System client records information technology maintenance and support. Community Health Record database creation.	135.0	0.0	0.0
3018	Inter-Agency Information Technology Telecommunications	Admin - Department-wide	Department-wide information technology telecommunications	38.5	0.0	0.0
3020	Inter-Agency Building Maintenance	FishGm - Department-wide	Lease, maintenance, and utilities for Glennallen Public Health Center.	8.4	0.0	0.0
3021	Inter-Agency Mail	Admin - Department-wide	Inter-agency mail charge back and courier and postage charges.	10.3	0.0	0.0
3022	Inter-Agency Human Resources	Admin - Department-wide	Human resources chargeback	95.2	0.0	0.0
3023	Inter-Agency Building Leases	Trans - Department-wide	Shared lease with Department of Transportation	1,462.4	0.0	0.0
3024	Inter-Agency Legal	Law - Department-wide	Legal Services Department Chargeback.	5.0	0.0	0.0
3026	Inter-Agency Insurance	Admin - Department-wide	Department Chargeback for Insurance	61.2	0.0	0.0
3027	Inter-Agency Financial	Admin - Department-wide	Department-wide Financial Services Chargeback	2.1	0.0	0.0
3028	Inter-Agency Americans with Disabilities Act Compliance	Admin - Department-wide	Department-wide Risk Management chargeback.	1.5	0.0	0.0
3029	Inter-Agency Education/Training	Admin - Department-wide		17.1	0.0	0.0
3029	Inter-Agency Education/Training	H&SS - Public Health Laboratories (2252)		1.1	0.0	0.0
3037	State Equipment Fleet	Trans - Department-wide	Department of Transportation and Public Facilities state-owned vehicles charges.	93.6	0.0	0.0
3038	Inter-Agency Management/Consulting	Gov - Department-wide	Inter-agency management/consulting services	9.2	0.0	0.0

Line Item Detail (1676)
Department of Health & Social Services
Services

Component: Nursing (288)

Object Class		Servicing Agency	Explanation	FY2022 Actuals	FY2023 Management Plan	FY2024 Governor
3000 Services Detail Totals				5,535.0	0.0	0.0
3038	Inter-Agency Management/Consulting	H&SS - Administrative Support Svcs (320)	Inter-agency management/consulting services	74.1	0.0	0.0
3038	Inter-Agency Management/Consulting	H&SS - Commissioner's Office (317)	Inter-agency management/consulting services	13.1	0.0	0.0
3038	Inter-Agency Management/Consulting	H&SS - Information Technology Services (2754)	Inter-agency management/consulting services	1,055.1	0.0	0.0
3038	Inter-Agency Management/Consulting	H&SS - Public Affairs (2874)	Inter-agency management/consulting services	298.1	0.0	0.0
3038	Inter-Agency Management/Consulting	Labor - Department-wide	Population estimates - demographic support	1.2	0.0	0.0
3038	Inter-Agency Management/Consulting	Trans - Department-wide	Inter-agency management/consulting services	1.2	0.0	0.0

Line Item Detail (1676)
Department of Health & Social Services
Commodities

Component: Nursing (288)

Line Number	Line Name		FY2022 Actuals	FY2023 Management Plan	FY2024 Governor
4000	Commodities		283.6	0.0	0.0
Object Class	Servicing Agency	Explanation	FY2022 Actuals	FY2023 Management Plan	FY2024 Governor
4000 Commodities Detail Totals			283.6	0.0	0.0
4000	Business	Medical forms and office supplies.	202.1	0.0	0.0
4002	Household/Institutional	Cleaning supplies for common areas of public health centers.	6.5	0.0	0.0
4003	Scientific and Medical	Medical Supplies for public health centers.	74.9	0.0	0.0
4018	Surface Chemicals	Ice and snow removal for Public Health Centers.	0.1	0.0	0.0

Line Item Detail (1676)
Department of Health & Social Services
Grants, Benefits

Component: Nursing (288)

Line Number	Line Name		FY2022 Actuals	FY2023 Management Plan	FY2024 Governor
7000	Grants, Benefits		4,489.5	0.0	0.0
Object Class	Servicing Agency	Explanation	FY2022 Actuals	FY2023 Management Plan	FY2024 Governor
		7000 Grants, Benefits Detail Totals	4,489.5	0.0	0.0
7001	Grants	Public Health Nursing Grants to North Slope Borough, Maniilaq, and Anchorage.	4,489.5	0.0	0.0

Line Item Detail (1676)
Department of Health
Travel

Component: Nursing (288)

Line Number	Line Name		FY2022 Actuals	FY2023 Management Plan	FY2024 Governor
2000	Travel		0.0	528.8	578.8
Object Class	Servicing Agency	Explanation	FY2022 Actuals	FY2023 Management Plan	FY2024 Governor
2000 Travel Detail Totals			0.0	528.8	578.8
2000	In-State Employee Travel	In state employee travel to deliver public health nursing services to Alaskans in more than 250 communities on a year round basis. Expenses include airfare, lodging, meal and incidentals, and other transportation costs.	0.0	477.3	500.3
2001	In-State Non-Employee Travel	Non-employee travel for conference in state	0.0	0.5	0.5
2002	Out of State Employee Travel	Public Health Nursing Chief travel to out-of-state conference	0.0	7.0	5.0
2005	Moving Costs	Moving costs for hard-to-fill positions	0.0	40.0	70.0
2006	Other Travel Costs	Other travel costs	0.0	4.0	3.0

Line Item Detail (1676)
Department of Health
Services

Component: Nursing (288)

Line Number	Line Name		FY2022 Actuals	FY2023 Management Plan	FY2024 Governor
3000	Services		0.0	5,374.2	5,374.2
Object Class	Servicing Agency	Explanation	FY2022 Actuals	FY2023 Management Plan	FY2024 Governor
3000 Services Detail Totals			0.0	5,374.2	5,374.2
3000	Education Services	Training and conference registration for staff, memberships, and employee tuition.	0.0	525.0	45.0
3001	Financial Services	Financial services	0.0	0.0	1.0
3003	Information Technology	Department of Administration Enterprise Technology Services, Enterprise Productivity Rate computer and phone, Microsoft licensing, MICS (software program), PBX (phones system), Virtual Private Network (VPN) accounts, etc.	0.0	73.0	75.0
3004	Telecommunications	Telephone services i.e., long distance, local/equipment, data/network, cellular phones, and other wireless charges.	0.0	190.0	245.0
3005	Health Services	Laboratory test kits	0.0	9.7	9.7
3006	Delivery Services	Postage and Courier	0.0	42.5	42.5
3007	Advertising and Promotions	Safety and educational materials for clients and advertising for difficult to fill vacant Public Health Nursing positions.	0.0	1.8	1.8
3008	Utilities	Electric, sewer, water, garbage disposal and heating fuel for health centers.	0.0	279.7	180.0
3009	Structure/Infrastructure/Land	Maintenance and leases for health centers.	0.0	500.0	500.0
3010	Equipment/Machinery	Miscellaneous repairs, maintenance	0.0	42.0	50.0

Line Item Detail (1676)
Department of Health
Services

Component: Nursing (288)

Object Class		Servicing Agency	Explanation	FY2022 Actuals	FY2023 Management Plan	FY2024 Governor
			3000 Services Detail Totals	0.0	5,374.2	5,374.2
3011	Other Services		and calibration of equipment used at the public health centers.	0.0	89.5	60.0
3017	Inter-Agency Information Technology Non-Telecommunications	Admin - Department-wide	Program management and consultant services.	0.0	1,110.0	760.0
3017	Inter-Agency Information Technology Non-Telecommunications	H&SS - Administrative Support Svcs (320)	Department-wide information technology non-telecommunications chargeback.	0.0	90.0	55.0
3017	Inter-Agency Information Technology Non-Telecommunications	H&SS - Commissioner's Office (317)	Inter-agency Information Technology Non-Telecommunications expenditures	0.0	12.0	12.0
3017	Inter-Agency Information Technology Non-Telecommunications	H&SS - Information Technology Services (2754)	Inter-agency Information Technology Non-Telecommunications expenditures	0.0	592.7	600.0
3017	Inter-Agency Information Technology Non-Telecommunications	H&SS - Information Technology Services (2754)	Resource and Patient Management System client records information technology maintenance and support. Community Health Record database creation.	0.0	135.0	131.8
3018	Inter-Agency Information Technology Telecommunications	Admin - Department-wide	Inter-agency Information Technology Non-Telecommunications expenditures	0.0	95.2	135.2
3020	Inter-Agency Building Maintenance	FishGm - Department-wide	Department-wide information technology telecommunications	0.0	15.0	20.0
3020	Inter-Agency Building Maintenance	H&SS - Administrative Support Svcs (320)	Lease, maintenance, and utilities for Glennallen Public Health Center.	0.0	0.0	0.0
3020	Inter-Agency Building Maintenance	Trans - Department-wide	Reimbursable services agreement with Department of Administration for building maintenance	0.0	0.0	0.0
			Service-level agreement with Department of Transportation for maintenance for the Juneau, Ketchikan, and Fairbanks public health centers.	0.0	0.0	0.0

Line Item Detail (1676)
Department of Health
Services

Component: Nursing (288)

Object Class		Servicing Agency	Explanation	FY2022 Actuals	FY2023 Management Plan	FY2024 Governor
3000 Services Detail Totals				0.0	5,374.2	5,374.2
3021	Inter-Agency Mail	Admin - Department-wide	Inter-agency mail charge back and courier and postage charges.	0.0	3.5	20.0
3022	Inter-Agency Human Resources	Admin - Department-wide	Human resources chargeback	0.0	115.0	166.0
3022	Inter-Agency Human Resources	Admin - Department-wide	Human resources chargeback	0.0	0.0	0.0
3023	Inter-Agency Building Leases	Admin - Department-wide	Leases for Public Health Centers and Offices.	0.0	1,297.0	1,500.0
3023	Inter-Agency Building Leases	Trans - Department-wide	Shared lease with Department of Transportation	0.0	26.2	26.2
3024	Inter-Agency Legal	Law - Department-wide	Legal Services Department Chargeback.	0.0	1.0	1.0
3025	Inter-Agency Auditing	H&SS - Administrative Support Svcs (320)	Internal audit	0.0	1.0	1.0
3026	Inter-Agency Insurance	Admin - Department-wide	Department Chargeback for Insurance	0.0	40.0	40.0
3027	Inter-Agency Financial	Admin - Department-wide	Department-wide Financial Services Chargeback	0.0	10.0	10.0
3028	Inter-Agency Americans with Disabilities Act Compliance	Admin - Department-wide	Department-wide Risk Management chargeback.	0.0	1.3	1.3
3029	Inter-Agency Education/Training	Admin - Department-wide	Reimbursable services agreement for education and training services.	0.0	3.6	17.0
3029	Inter-Agency Education/Training	H&SS - Administrative Support Svcs (320)	Reimbursable services agreement with Department of Administration for staff training	0.0	0.0	0.0
3032	Inter-Agency Health	H&SS - Public Health Laboratories (2252)	Funds for providing herpes simplex virus polymerase chain reaction (HSV PCR) and Trichomonas Testing Services for clients of Public Health Nursing.	0.0	10.0	10.0
3037	State Equipment Fleet	Trans - Department-wide	Department of Transportation and Public Facilities state-owned vehicles charges.	0.0	50.0	108.5

Line Item Detail (1676)
Department of Health
Services

Component: Nursing (288)

Object Class		Servicing Agency	Explanation	FY2022 Actuals	FY2023 Management Plan	FY2024 Governor
3000 Services Detail Totals				0.0	5,374.2	5,374.2
3038	Inter-Agency Management/Consulting	Admin - Department-wide	Inter-agency management/consulting services	0.0	1.0	27.7
3038	Inter-Agency Management/Consulting	Gov - Department-wide	Inter-agency management/consulting services	0.0	10.5	10.5
3038	Inter-Agency Management/Consulting	H&SS - Information Technology Services (2754)	Inter-agency management/consulting services	0.0	0.0	10.0
3038	Inter-Agency Management/Consulting	Labor - Department-wide	Population estimates - demographic support	0.0	1.0	1.0
3038	Inter-Agency Management/Consulting	H&SS - Information Technology Services (2754)	Inter-agency management/consulting services	0.0	0.0	500.0

Line Item Detail (1676)
Department of Health
Commodities

Component: Nursing (288)

Line Number	Line Name		FY2022 Actuals	FY2023 Management Plan	FY2024 Governor
4000	Commodities		0.0	805.0	855.0
Object Class	Servicing Agency	Explanation	FY2022 Actuals	FY2023 Management Plan	FY2024 Governor
4000 Commodities Detail Totals			0.0	805.0	855.0
4000	Business	Medical forms and office supplies.	0.0	200.0	250.0
4002	Household/Institutional	Cleaning supplies for common areas of public health centers.	0.0	3.0	10.0
4003	Scientific and Medical	Medical Supplies for public health centers.	0.0	475.0	514.4
4004	Safety	Safety supplies for Public Health Centers	0.0	25.0	5.0
4005	Building Materials	Office space remodel	0.0	0.1	1.1
4006	Signs and Markers	Safety signs and markers for Public Health Centers.	0.0	50.0	10.0
4011	Electrical	Electrical supplies for Health Center Maintenance	0.0	5.0	10.0
4012	Plumbing	Plumbing repairs for Public Health Centers	0.0	5.0	10.0
4015	Parts and Supplies	Supplies for Health Center Maintenance	0.0	36.7	20.0
4018	Surface Chemicals	Ice and snow removal for Public Health Centers.	0.0	5.0	15.0
4019	Small Tools/Minor Equipment	Small tools needed in Public Health Centers for small in-house repairs.	0.0	0.2	9.5

Line Item Detail (1676)
Department of Health
Grants, Benefits

Component: Nursing (288)

Line Number	Line Name		FY2022 Actuals	FY2023 Management Plan	FY2024 Governor
7000	Grants, Benefits		0.0	4,789.5	4,789.5
Object Class	Servicing Agency	Explanation	FY2022 Actuals	FY2023 Management Plan	FY2024 Governor
		7000 Grants, Benefits Detail Totals	0.0	4,789.5	4,789.5
7001	Grants	Public Health Nursing Grants to North Slope Borough, Maniilaq, and Anchorage.	0.0	4,789.5	4,789.5

Revenue Detail (1681)
Department of Health & Social Services

Component: Nursing (288)

Revenue Type (OMB Fund Code) Revenue Source	Component	Comment	FY2022 Actuals	FY2023 Management Plan	FY2024 Governor
5002 Fed Rcpts (1002 Fed Rcpts)			4,415.8	0.0	0.0
5019 Federal - Miscellaneous Grants		<p>Skilled Professional Medical Personnel (SPMP) activities. Eligible costs are allocated by Nursing Medicaid Eligibility Ratio (MER) and collect 75 percent federal reimbursement, and Skilled Professional Medical Personnel doing Non-SPMP activities allocated by Medicaid Eligibility Ratio and collect 50 percent federal reimbursement. Reimbursement is based on actual expenditures, not a fixed grant award.</p> <p>Random Moment Time Study (RMTS) of field nurses doing Medicaid eligible activities. Nursing supports administration of the Medicaid State Plan by providing outreach, referral, and education to Medicaid eligible children and adults. Eligible costs are allocated by Nursing Medicaid Eligibility Ratio and collect 50 percent federal rate. Public Health Nursing Administrative Claim is based on actual expenditures, not a fixed rate. Public Health Emergency Preparedness funding for travel and preparedness nurse position funding.</p>	4,415.8	0.0	0.0
5005 GF/Prgm (1005 GF/Prgm)			27.9	0.0	0.0
5103 Program Receipts - Charges for Services		Receipt supports services are fees collected from public health nurses	27.9	0.0	0.0

Revenue Detail (1681)
Department of Health & Social Services

Component: Nursing (288)

Revenue Type (OMB Fund Code)	Component	Comment	FY2022 Actuals	FY2023 Management Plan	FY2024 Governor
Revenue Source		providing services to clients statewide.			

Revenue Detail (1681)
Department of Health

Component: Nursing (288)

Revenue Type (OMB Fund Code) Revenue Source	Component	Comment	FY2022 Actuals	FY2023 Management Plan	FY2024 Governor
5002 Fed Rcpts (1002 Fed Rcpts)			0.0	6,296.4	6,427.0
5019 Federal - Miscellaneous Grants		<p>Skilled Professional Medical Personnel (SPMP) activities. Eligible costs are allocated by Nursing Medicaid Eligibility Ratio (MER) and collect 75 percent federal reimbursement, and Skilled Professional Medical Personnel doing Non-SPMP activities allocated by Medicaid Eligibility Ratio and collect 50 percent federal reimbursement. Reimbursement is based on actual expenditures, not a fixed grant award.</p> <p>Random Moment Time Study (RMTS) of field nurses doing Medicaid eligible activities. Nursing supports administration of the Medicaid State Plan by providing outreach, referral, and education to Medicaid eligible children and adults. Eligible costs are allocated by Nursing Medicaid Eligibility Ratio and collect 50 percent federal rate. Public Health Nursing Administrative Claim is based on actual expenditures, not a fixed rate. Public Health Emergency Preparedness funding for travel and preparedness nurse position funding.</p>	0.0	6,296.4	6,427.0
5005 GF/Prgm (1005 GF/Prgm)			0.0	654.2	654.2
5103 Program Receipts - Charges for Services		Receipt supports services are fees collected from public health nurses	0.0	654.2	654.2

Revenue Detail (1681)
Department of Health

Component: Nursing (288)

Revenue Type (OMB Fund Code) Revenue Source	Component	Comment	FY2022 Actuals	FY2023 Management Plan	FY2024 Governor
		providing services to clients statewide.			
5007 I/A Rcpts (1007 I/A Rcpts)			0.0	5.0	5.0
5301 Inter-Agency Receipts	H&SS - Epidemiology (296)	Provides funds to purchase incentives and enablers for persons being treated for active tuberculosis (TB) and latent TB as funding permits. Provide funds for Epidemiologic disease outbreak, investigation, and treatment training to licenses Public Health Nurses as funding permits. Provides funds for eligible OD2A personal services, travel, and services.	0.0	0.0	0.0
5301 Inter-Agency Receipts	H&SS - Women, Children and Family Healt (2788)	Breast and Cervical Health Check Screening and Referral based on numbers of women referred for breast and cervical cancer at any Public Health Center	0.0	5.0	0.0
5301 Inter-Agency Receipts	PubSaf - Department-wide	Reimbursable services agreement with Department of Public Safety	0.0	0.0	5.0
6003 G/F Match (1003 G/F Match)			0.0	24,080.1	24,427.2
6103 Match - Miscellaneous		General fund match	0.0	24,080.1	24,427.2
6004 Gen Fund (1004 Gen Fund)			0.0	520.0	520.0
6047 General Fund - Miscellaneous		General fund for recruitment and retention bonuses	0.0	520.0	520.0

Inter-Agency Services (1682)
Department of Health & Social Services

Component: Nursing (288)

	FY2022 Actuals	FY2023 Management Plan	FY2024 Governor
Component Totals	4,501.8	0.0	0.0
With Department of Administration	1,344.3	2,676.6	2,677.2
With Department of Health	1,576.5	840.7	1,319.8
With Department of Fish and Game	8.4	15.0	20.0
With Department of Transportation/Public Facilities	1,557.2	76.2	134.7
With Department of Law	5.0	1.0	1.0
With Office of the Governor	9.2	10.5	10.5
With Department of Labor and Workforce Development	1.2	1.0	1.0

Object Class	Servicing Agency	Explanation	FY2022 Actuals	FY2023 Management Plan	FY2024 Governor
3017	Inter-Agency Information Technology Non-Telecommunications	Admin - Department-wide Department-wide information technology non-telecommunications chargeback.	1,118.4	0.0	0.0
3017	Inter-Agency Information Technology Non-Telecommunications	H&SS - Information Technology Services (2754) Resource and Patient Management System client records information technology maintenance and support. Community Health Record database creation.	135.0	0.0	0.0
3018	Inter-Agency Information Technology Telecommunications	Admin - Department-wide Department-wide information technology telecommunications	38.5	0.0	0.0
3020	Inter-Agency Building Maintenance	FishGm - Department-wide Lease, maintenance, and utilities for Glennallen Public Health Center.	8.4	0.0	0.0
3021	Inter-Agency Mail	Admin - Department-wide Inter-agency mail charge back and courier and postage charges.	10.3	0.0	0.0
3022	Inter-Agency Human Resources	Admin - Department-wide Human resources chargeback	95.2	0.0	0.0
3023	Inter-Agency Building Leases	Trans - Department-wide Shared lease with Department of Transportation	1,462.4	0.0	0.0
3024	Inter-Agency Legal	Law - Department-wide Legal Services Department Chargeback.	5.0	0.0	0.0
3026	Inter-Agency Insurance	Admin - Department-wide Department Chargeback for Insurance	61.2	0.0	0.0

Inter-Agency Services (1682)
Department of Health & Social Services

Component: Nursing (288)

Object Class		Servicing Agency	Explanation	FY2022 Actuals	FY2023 Management Plan	FY2024 Governor
3027	Inter-Agency Financial	Admin - Department-wide	Department-wide Financial Services Chargeback	2.1	0.0	0.0
3028	Inter-Agency Americans with Disabilities Act Compliance	Admin - Department-wide	Department-wide Risk Management chargeback.	1.5	0.0	0.0
3029	Inter-Agency Education/Training	Admin - Department-wide		17.1	0.0	0.0
3029	Inter-Agency Education/Training	H&SS - Public Health Laboratories (2252)		1.1	0.0	0.0
3037	State Equipment Fleet	Trans - Department-wide	Department of Transportation and Public Facilities state-owned vehicles charges.	93.6	0.0	0.0
3038	Inter-Agency Management/Consulting	Gov - Department-wide	Inter-agency management/consulting services	9.2	0.0	0.0
3038	Inter-Agency Management/Consulting	H&SS - Administrative Support Svcs (320)	Inter-agency management/consulting services	74.1	0.0	0.0
3038	Inter-Agency Management/Consulting	H&SS - Commissioner's Office (317)	Inter-agency management/consulting services	13.1	0.0	0.0
3038	Inter-Agency Management/Consulting	H&SS - Information Technology Services (2754)	Inter-agency management/consulting services	1,055.1	0.0	0.0
3038	Inter-Agency Management/Consulting	H&SS - Public Affairs (2874)	Inter-agency management/consulting services	298.1	0.0	0.0
3038	Inter-Agency Management/Consulting	Labor - Department-wide	Population estimates - demographic support	1.2	0.0	0.0
3038	Inter-Agency Management/Consulting	Trans - Department-wide	Inter-agency management/consulting services	1.2	0.0	0.0
3017	Inter-Agency Information Technology Non-Telecommunications	Admin - Department-wide	Department-wide information technology non-telecommunications chargeback.	0.0	1,110.0	760.0
3017	Inter-Agency Information Technology Non-Telecommunications	H&SS - Administrative Support Svcs (320)	Inter-agency Information Technology Non-Telecommunications expenditures	0.0	90.0	55.0
3017	Inter-Agency Information Technology Non-Telecommunications	H&SS - Commissioner's Office (317)	Inter-agency Information Technology Non-Telecommunications expenditures	0.0	12.0	12.0

Inter-Agency Services (1682)
Department of Health & Social Services

Component: Nursing (288)

Object Class		Servicing Agency	Explanation	FY2022 Actuals	FY2023 Management Plan	FY2024 Governor
3017	Inter-Agency Information Technology Non-Telecommunications	H&SS - Information Technology Services (2754)	Resource and Patient Management System client records information technology maintenance and support. Community Health Record database creation.	0.0	592.7	600.0
3017	Inter-Agency Information Technology Non-Telecommunications	H&SS - Information Technology Services (2754)	Inter-agency Information Technology Non-Telecommunications expenditures	0.0	135.0	131.8
3018	Inter-Agency Information Technology Telecommunications	Admin - Department-wide	Department-wide information technology telecommunications	0.0	95.2	135.2
3020	Inter-Agency Building Maintenance	FishGm - Department-wide	Lease, maintenance, and utilities for Glennallen Public Health Center.	0.0	15.0	20.0
3021	Inter-Agency Mail	Admin - Department-wide	Inter-agency mail charge back and courier and postage charges.	0.0	3.5	20.0
3022	Inter-Agency Human Resources	Admin - Department-wide	Human resources chargeback	0.0	115.0	166.0
3023	Inter-Agency Building Leases	Admin - Department-wide	Leases for Public Health Centers and Offices.	0.0	1,297.0	1,500.0
3023	Inter-Agency Building Leases	Trans - Department-wide	Shared lease with Department of Transportation	0.0	26.2	26.2
3024	Inter-Agency Legal	Law - Department-wide	Legal Services Department Chargeback.	0.0	1.0	1.0
3025	Inter-Agency Auditing	H&SS - Administrative Support Svcs (320)	Internal audit	0.0	1.0	1.0
3026	Inter-Agency Insurance	Admin - Department-wide	Department Chargeback for Insurance	0.0	40.0	40.0
3027	Inter-Agency Financial	Admin - Department-wide	Department-wide Financial Services Chargeback	0.0	10.0	10.0
3028	Inter-Agency Americans with Disabilities Act Compliance	Admin - Department-wide	Department-wide Risk Management chargeback.	0.0	1.3	1.3
3029	Inter-Agency Education/Training	Admin - Department-wide	Reimbursable services agreement for education and training services.	0.0	3.6	17.0
3032	Inter-Agency Health	H&SS - Public Health Laboratories (2252)	Funds for providing herpes simplex virus polymerase chain reaction	0.0	10.0	10.0

Inter-Agency Services (1682)
Department of Health & Social Services

Component: Nursing (288)

Object Class		Servicing Agency	Explanation	FY2022 Actuals	FY2023 Management Plan	FY2024 Governor
			(HSV PCR) and Trichomonas Testing Services for clients of Public Health Nursing.			
3037	State Equipment Fleet	Trans - Department-wide	Department of Transportation and Public Facilities state-owned vehicles charges.	0.0	50.0	108.5
3038	Inter-Agency Management/Consulting	Admin - Department-wide	Inter-agency management/consulting services	0.0	1.0	27.7
3038	Inter-Agency Management/Consulting	Gov - Department-wide	Inter-agency management/consulting services	0.0	10.5	10.5
3038	Inter-Agency Management/Consulting	H&SS - Information Technology Services (2754)	Inter-agency management/consulting services	0.0	0.0	10.0
3038	Inter-Agency Management/Consulting	Labor - Department-wide	Population estimates - demographic support	0.0	1.0	1.0
3038	Inter-Agency Management/Consulting	H&SS - Information Technology Services (2754)	Inter-agency management/consulting services	0.0	0.0	500.0

Personal Services Expenditure Detail
Department of Health

Scenario: FY2024 Governor (19867)
Component: Nursing (288)
RDU: Public Health (502)

PCN	Job Class Title	Time Status	Retire Code	Barg Unit	Location	Salary Sched	Range / Step	Comp Months	Split / Count	Annual Salaries	COLA	Premium Pay	Annual Benefits	Total Costs	UGF Amount
06-1008	Office Assistant 2	FT	A	GP	Craig	200	10F	12.0		42,530	1,463	0	34,969	78,962	63,170
06-1012	Office Assistant 2	FT	A	GP	Sitka	205	10A / B	12.0		39,585	1,361	0	33,863	74,809	59,847
06-1013	Office Assistant 2	FT	A	GP	Fairbanks	203	10A / B	12.0		38,825	1,335	0	33,577	73,737	58,990
06-1019	Public Health Nurse 6	FT	A	SS	Anchorage	200	27D / E	12.0		129,740	1,785	0	70,390	201,915	141,341
06-1020	Public Health Nurse 5	FT	A	SS	Anchorage	200	26C / D	12.0		120,739	1,661	0	67,010	189,410	151,528
06-1093	Administrative Assistant 3	FT	A	SS	Juneau	605	15D / E	12.0		64,126	882	0	45,752	110,760	94,146
06-1094	Public Health Nurse 3	FT	A	GP	Tok	200	24A / B	12.0		96,389	3,315	0	55,193	154,897	108,428
06-1096	Public Health Nurse 3	FT	A	GP	Bethel	250	24A / B	10.0		119,182	4,098	0	60,585	183,865	147,092
06-1100	Public Health Nurse 3	FT	A	GP	Anchorage	200	24E / F	12.0		110,331	3,794	0	60,428	174,553	139,642
06-1101	Office Assistant 2	FT	A	GG	Kodiak	211	10R / R	12.0		61,394	2,111	0	42,052	105,557	89,724
06-1102	Public Health Nurse 3	FT	A	GP	Kenai	200	24L	12.0		127,082	4,370	0	66,718	198,170	158,536
06-1103	Public Health Nurse 3	FT	A	GP	Bethel	250	24C / D	12.0		150,958	5,191	0	75,683	231,832	185,466
06-1104	Administrative Assistant 1	FT	A	GP	Fairbanks	203	12R / S	12.0		70,366	2,420	0	45,421	118,207	100,476
06-1109	Public Health Nurse 3	FT	A	GP	Wasilla	200	24A / B	12.0		95,516	3,285	0	54,865	153,666	122,933
06-1111	Office Assistant 4	FT	A	SS	Kenai	600	12F / J	12.0		51,487	708	0	41,006	93,201	79,221
06-1112	Public Health Nurse 4	FT	A	SS	Kenai	200	25M	12.0		143,562	1,975	0	75,580	221,117	66,335
06-1113	Office Assistant 2	FT	A	GP	Homer	200	10G / J	12.0		44,255	1,522	0	35,616	81,393	69,184
06-1114	Office Assistant 4	FT	A	SS	Bethel	650	12A / B	10.0		55,526	764	0	38,911	95,201	80,921
06-1115	Public Health Nurse 4	FT	A	SS	Bethel	250	25A / B	10.0		136,053	1,871	0	69,148	207,072	144,950
06-1116	Office Assistant 2	FT	A	GP	Wasilla	200	10A / B	12.0		37,425	1,287	0	33,052	71,764	60,999
06-1117	Public Health Nurse 5	FT	A	SS	Wasilla	200	26A / B	10.0		93,841	1,291	0	53,298	148,430	44,529
06-1119	Public Health Nurse 3	FT	A	GP	Bethel	250	24C / D	10.0		127,696	4,391	0	63,782	195,869	156,695
06-1122	Public Health Nurse 3	FT	A	GP	Bethel	250	24E / F	12.0		162,825	5,350	0	79,979	248,154	198,523
06-1124	Public Health Nurse 3	FT	A	GP	Homer	200	24J	12.0		119,204	4,099	0	63,760	187,063	149,650
06-1126	Administrative Assistant 3	FT	A	SS	Wasilla	600	15B / C	12.0		55,709	766	0	42,591	99,066	84,206
06-1127	Public Health Nurse Aide	FT	A	GP	Wasilla	200	12C / D	12.0		44,144	1,518	0	35,575	81,237	69,052
06-1131	Office Assistant 2	FT	A	GP	Dillingham	237	10L / M	12.0		68,830	2,367	0	44,844	116,041	98,635
06-1133	Administrative Assistant 3	FT	A	SS	Anchorage	200	15A / B	12.0		54,777	753	0	42,241	97,771	97,771
06-1134	Nurse Consultant 2	FT	A	GP	Anchorage	200	26G / J	12.0		129,990	4,470	0	67,810	202,270	60,681
06-1136	Public Health Nurse 1	FT	A	GP	Dillingham	237	22A / B	10.0		96,038	3,303	0	51,894	151,235	120,988
06-1138	Public Health Nurse 3	FT	A	GP	Anchorage	200	24B / C	12.0		97,310	3,346	0	55,539	156,195	124,956
06-1139	Public Health Nurse 3	FT	A	GP	Wasilla	200	24G	12.0		114,446	3,936	0	61,973	180,355	144,284
06-1142	Public Health Nurse 2	FT	A	GP	Fairbanks	203	23A / B	11.0		84,084	2,891	0	48,989	135,964	108,771
06-1143	Public Health Nurse 5	FT	A	SS	Fairbanks	203	26E / F	12.0		134,298	1,853	428	72,262	208,841	62,652
06-1146	Public Health Nurse 2	FT	A	GP	Fairbanks	203	23A / B	11.0		84,888	2,919	0	49,291	137,098	109,678
06-1149	Public Health Nurse 2	FT	A	GP	Fairbanks	203	23J	12.0		114,543	3,939	0	62,010	180,492	144,394
06-1154	Office Assistant 2	FT	A	GP	Fairbanks	203	10A / B	9.6		31,060	1,068	0	26,862	58,990	50,142
06-1155	Administrative Assistant 3	FT	A	SS	Fairbanks	603	15B / C	12.0		57,873	796	0	43,404	102,073	86,762

Note: If a position is split, an asterisk (*) will appear in the Split/Count column. If the split position is also counted in the component, two asterisks (**) will appear in this column. [No valid job title] appearing in the Job Class Title indicates that the PCN has an invalid class code or invalid range for the class code effective date of this scenario.

Personal Services Expenditure Detail
Department of Health

Scenario: FY2024 Governor (19867)
Component: Nursing (288)
RDU: Public Health (502)

PCN	Job Class Title	Time Status	Retire Code	Barg Unit	Location	Salary Sched	Range / Step	Comp Months	Split / Count	Annual Salaries	COLA	Premium Pay	Annual Benefits	Total Costs	UGF Amount
06-1157	Office Assistant 4	FT	A	SS	Fairbanks	603	12E	12.0		51,272	705	0	40,925	92,902	78,967
06-1158	Office Assistant 2	FT	A	GP	Kenai	200	10C / D	12.0		39,084	1,344	0	33,675	74,103	62,988
06-1162	Office Assistant 2	FT	A	GP	Fairbanks	203	10J	12.0		47,132	1,621	0	36,697	85,450	72,633
06-1212	Health Program Associate	FT	A	GP	Juneau	205	16C / D	12.0		61,023	2,098	0	41,913	105,034	89,279
06-1214	Public Health Nurse 3	FT	A	GP	Craig	200	24J / K	12.0		123,084	4,233	0	65,217	192,534	134,774
06-1216	Public Health Nurse 3	FT	A	GP	Juneau	205	24E / F	12.0		115,850	3,984	0	62,500	182,334	145,867
06-1218	Public Health Nurse 3	FT	A	GP	Petersburg	200	24J	12.0		119,204	4,099	0	63,760	187,063	130,944
06-1220	Phy Asst/Aprn 1	FT	A	GP	Ketchikan	200	26B / C	12.0		108,725	3,739	0	59,825	172,289	137,831
06-1221	Office Assistant 2	FT	A	GP	Petersburg	200	10C / D	12.0		39,225	1,349	0	33,728	74,302	63,157
06-1224	Public Health Nurse 3	FT	A	GP	Sitka	205	24D / E	12.0		111,036	3,818	0	60,693	175,547	122,883
06-1225	Public Health Nurse 3	FT	A	GP	Juneau	205	24A / B	10.0		84,124	2,893	0	47,421	134,438	26,888
06-1226	Public Health Nurse 5	FT	A	SS	Juneau	205	26K	12.0		146,474	2,015	0	76,674	225,163	67,549
06-1227	Office Assistant 1	FT	A	GP	Juneau	205	8A / B	10.0		28,763	989	0	26,633	56,385	47,927
06-1230	Office Assistant 4	FT	A	SS	Ketchikan	600	12B / C	12.0		46,125	634	0	38,993	85,752	72,889
06-1231	Office Assistant 1	FT	A	GP	Ketchikan	200	8E / F	12.0		37,694	1,296	0	33,153	72,143	61,322
06-1236	Public Health Nurse 2	FT	A	GP	Kenai	200	23G	12.0		106,763	3,671	0	59,088	169,522	135,618
06-1252	Public Health Nurse 2	FT	A	GP	Ketchikan	200	23B / C	12.0		90,337	3,106	0	52,920	146,363	102,454
06-1259	Public Health Nurse 4	FT	A	SS	Wasilla	200	25F	12.0		126,339	1,738	0	69,113	197,190	59,157
06-1266	Office Assistant 1	FT	A	GP	Juneau	205	8K / L	12.0		44,387	1,526	0	35,666	81,579	69,342
06-1275	Public Health Nurse 3	FT	A	GP	Fairbanks	203	24A / B	10.0		82,729	2,845	0	46,897	132,471	105,977
06-1279	Public Health Nurse 3	FT	A	GP	Anchorage	200	24A / B	10.0		80,324	2,762	0	45,994	129,080	103,264
06-1281	Public Health Nurse 3	FT	A	GP	Kodiak	211	24E / F	12.0		121,437	4,176	0	64,598	190,211	133,148
06-1302	Public Health Nurse 3	FT	A	GP	Dillingham	237	24A / B	10.0		110,045	3,784	0	57,154	170,983	119,688
06-1303	Public Health Nurse 4	FT	A	SS	Ketchikan	200	25E / F	12.0		125,206	1,722	0	68,687	195,615	58,685
06-1307	Office Assistant 2	FT	A	GP	Anchorage	200	10M	12.0		50,369	1,732	0	37,912	90,013	76,511
06-1309	Office Assistant 2	FT	A	GP	Wasilla	200	10A / B	12.0		37,157	1,278	0	32,951	71,386	71,386
06-1323	Public Health Nurse 3	FT	A	GP	Anchorage	200	24A / B	10.0		79,451	2,732	0	45,666	127,849	102,279
06-1329	Public Health Nurse Aide	FT	A	GP	Fairbanks	203	12J / K	12.0		54,098	1,860	0	39,312	95,270	95,270
06-1333	Public Health Nurse 2	FT	A	GP	Wasilla	200	23A / B	10.0		74,144	2,550	0	43,673	120,367	96,294
06-1372	Public Health Nurse 3	FT	A	GP	Bethel	250	24A / B	10.0		119,182	4,098	0	60,585	183,865	147,092
06-1373	Health Program Associate	FT	A	GP	Anchorage	200	16A / B	12.0		55,365	1,904	0	39,788	97,057	97,057
06-1375	Office Assistant 2	FT	A	GP	Tok	99	10P / Q	12.0		55,458	1,907	0	39,823	97,188	97,188
06-1382	Public Health Nurse 3	FT	A	GP	Juneau	205	24E / F	12.0		114,446	3,936	0	61,973	180,355	126,249
06-1384	Public Health Nurse 2	FT	A	GP	Fairbanks	203	23K	12.0		118,268	4,067	0	63,408	185,743	130,020
06-1385	Public Health Nurse 3	FT	A	GP	Delta Junction	200	24C / D	12.0		101,565	3,493	0	57,136	162,194	113,536
06-1389	Office Assistant 2	FT	A	GP	Juneau	205	10F / G	12.0		46,157	1,587	0	36,331	84,075	71,464
06-1405	Office Assistant 2	FT	A	GP	Juneau	205	10A / B	12.0		38,869	1,337	0	33,594	73,800	62,730
06-1406	Office Assistant 2	PT	A	GP	Fairbanks	203	10A	6.0		18,857	648	0	11,830	31,335	26,635

Note: If a position is split, an asterisk (*) will appear in the Split/Count column. If the split position is also counted in the component, two asterisks (**) will appear in this column. [No valid job title] appearing in the Job Class Title indicates that the PCN has an invalid class code or invalid range for the class code effective date of this scenario.

Personal Services Expenditure Detail
Department of Health

Scenario: FY2024 Governor (19867)
Component: Nursing (288)
RDU: Public Health (502)

PCN	Job Class Title	Time Status	Retire Code	Barg Unit	Location	Salary Sched	Range / Step	Comp Months	Split / Count	Annual Salaries	COLA	Premium Pay	Annual Benefits	Total Costs	UGF Amount
06-1408	Public Health Nurse 2	FT	A	GG	Fairbanks	203	23N	12.0		130,163	4,476	0	67,875	202,514	162,011
06-1409	Public Health Nurse 2	FT	A	GP	Fairbanks	203	23B / C	12.0		95,687	3,290	0	54,929	153,906	123,125
06-1410	Public Health Nurse 2	FT	A	GP	Fairbanks	203	23A / B	11.0		84,084	2,891	0	48,989	135,964	108,771
06-1411	Phy Asst/Aprn 1	FT	A	GP	Fairbanks	203	26E / F	12.0		122,843	4,224	0	65,126	192,193	153,754
06-1414	Office Assistant 1	FT	A	GP	Kenai	200	8A / B	12.0		32,965	1,134	0	31,377	65,476	55,655
06-1416	Public Health Nurse 2	FT	A	GP	Ketchikan	200	23A / B	10.0		74,144	2,550	0	43,673	120,367	96,294
06-1418	Public Health Nurse 4	FT	A	SS	Juneau	205	25K	12.0		141,419	1,945	0	74,775	218,139	65,442
06-1423	Public Health Nurse 4	FT	A	SS	Fairbanks	203	25P / Q	12.0		167,075	2,196	0	83,988	253,259	75,978
06-1424	Public Health Nurse 3	FT	A	GP	Valdez	211	24J	12.0		132,308	4,550	0	68,680	205,538	143,877
06-1425	Public Health Nurse 2	FT	A	GP	Fairbanks	203	23C / D	12.0		96,464	3,317	0	55,221	155,002	124,002
06-1426	Office Assistant 2	FT	A	GP	Valdez	211	10D / E	12.0		44,880	1,543	0	35,851	82,274	69,933
06-1432	Office Assistant 2	FT	A	GP	Nome	237	10F / G	12.0		58,672	2,018	0	41,030	101,720	86,462
06-1452	Administrative Officer 2	FT	A	SS	Anchorage	200	19C / D	12.0		77,430	1,065	0	50,748	129,243	109,857
06-1459	Public Health Nurse 2	FT	A	GP	Craig	200	23A / B	10.0		74,144	2,550	0	43,673	120,367	96,294
06-1489	Public Health Nurse 3	FT	A	GP	Fairbanks	203	24G	12.0		117,878	4,054	0	63,262	185,194	148,155
06-1490	Public Health Nurse 2	FT	A	GP	Homer	200	23A / B	12.0		89,130	3,065	0	52,467	144,662	101,263
06-1500	Public Health Nurse 2	FT	A	GP	Ketchikan	200	23A / B	11.0		81,637	2,807	0	48,070	132,514	106,011
06-1501	Public Health Nurse 2	FT	A	GP	Wasilla	200	23K	12.0		114,816	3,948	0	62,112	180,876	144,701
06-1502	Public Health Nurse 2	FT	A	GP	Bethel	250	23A / B	10.0		111,222	3,825	0	57,596	172,643	138,114
06-1519	Office Assistant 2	FT	A	GP	Bethel	250	10F / G	12.0		63,893	2,197	0	42,990	109,080	92,718
06-1520	Public Health Nurse 1	FT	A	GP	Bethel	250	22A / B	10.0		104,042	3,578	0	54,900	162,520	130,016
06-1522	Public Health Nurse 2	FT	A	GP	Juneau	205	23A / B	12.0		93,595	3,218	0	54,144	150,957	120,766
06-1530	Public Health Nurse 2	FT	A	GP	Kenai	200	23A / B	12.0		89,915	3,092	0	52,762	145,769	116,615
06-1533	Public Health Nurse 2	FT	A	GP	Nome	237	23B / C	12.0		125,263	4,307	0	66,035	195,605	156,484
06-1536	Public Health Nurse Aide	FT	A	GP	Ketchikan	200	12E / F	12.0		48,297	1,661	0	37,134	87,092	74,028
06-1542	Office Assistant 1	FT	A	GP	Ketchikan	99	8Q / Q	12.0		50,778	1,746	0	38,066	90,590	77,002
06-1543	Public Health Nurse 2	FT	A	GP	Ketchikan	200	23A / B	11.0		81,637	2,807	0	48,070	132,514	106,011
06-1544	Public Health Nurse 3	FT	A	GP	Juneau	205	24A / B	12.0		100,289	3,449	0	56,657	160,395	128,316
06-1545	Public Health Nurse 1	FT	A	GP	Fairbanks	203	22A / B	10.0		71,438	2,457	0	42,657	116,552	93,242
06-1546	Public Health Nurse 2	FT	A	GP	Juneau	205	23A / B	12.0		94,089	3,235	0	54,329	151,653	121,322
06-1547	Public Health Nurse 2	FT	A	GP	Fairbanks	203	23A / B	10.0		76,367	2,626	0	44,508	123,501	98,801
06-1549	Office Assistant 2	FT	A	GP	Fairbanks	203	10E / F	12.0		43,743	1,504	0	35,424	80,671	68,570
06-1550	Office Assistant 4	FT	A	SS	Juneau	605	12A / B	12.0		47,112	648	0	39,363	87,123	74,055
06-1565	Phy Asst/Aprn 1	FT	A	GP	Wasilla	200	26P	12.0		125,184	4,305	0	66,005	195,494	156,395
06-1573	Public Health Nurse 2	FT	A	GP	Fairbanks	203	23A / B	12.0		91,265	3,138	0	53,269	147,672	118,138
06-1574	Nurse 2	FT	A	GP	Bethel	250	22A / B	10.0		104,042	3,578	0	54,900	162,520	130,016
06-1575	Nurse 2	FT	A	GP	Homer	200	22A / B	12.0		83,382	2,867	0	50,309	136,558	109,246
06-1576	Public Health Nurse 3	FT	A	GP	Bethel	250	24A / B	11.0		131,232	4,513	0	66,693	202,438	161,950

Note: If a position is split, an asterisk (*) will appear in the Split/Count column. If the split position is also counted in the component, two asterisks (**) will appear in this column. [No valid job title] appearing in the Job Class Title indicates that the PCN has an invalid class code or invalid range for the class code effective date of this scenario.

Personal Services Expenditure Detail
Department of Health

Scenario: FY2024 Governor (19867)
Component: Nursing (288)
RDU: Public Health (502)

PCN	Job Class Title	Time Status	Retire Code	Barg Unit	Location	Salary Sched	Range / Step	Comp Months	Split / Count	Annual Salaries	COLA	Premium Pay	Annual Benefits	Total Costs	UGF Amount
06-1577	Public Health Nurse 3	FT	A	GP	Ketchikan	200	24A / B	11.0		87,484	3,008	0	50,266	140,758	112,606
06-1578	Public Health Nurse 2	FT	A	GP	Bethel	250	23A / B	10.0		111,222	3,825	0	57,596	172,643	138,114
06-1582	Public Health Nurse 3	FT	A	GP	Fairbanks	203	24A / B	12.0		96,823	3,330	0	55,356	155,509	0
06-1591	Office Assistant 2	FT	A	GP	Wasilla	200	10A / B	12.0		37,694	1,296	0	33,153	72,143	61,322
06-1592	Office Assistant 2	FT	A	GP	Juneau	205	10B / C	12.0		40,557	1,395	0	34,228	76,180	64,753
06-1593	Office Assistant 2	FT	A	GP	Fairbanks	203	10A / B	11.0		35,033	1,205	0	30,570	66,808	56,787
06-1598	Office Assistant 4	FT	A	SS	Wasilla	600	12C / D	12.0		48,077	661	0	39,726	88,464	75,194
06-1629	Public Health Nurse 4	FT	A	SS	Fairbanks	203	25A / B	10.0		93,425	1,285	0	53,142	147,852	44,356
06-1631	Public Health Nurse 2	FT	A	GP	Juneau	205	23D / E	12.0		102,724	3,532	0	57,572	163,828	131,062
06-1646	Phy Asst/Aprn 1	FT	A	GP	Kenai	200	26J / K	12.0		134,472	4,624	0	69,493	208,589	166,871
06-1648	Nurse Consultant 2	FT	A	GP	Juneau	205	26G	12.0		134,043	4,609	0	69,332	207,984	62,395
06-1663	Office Assistant 1	FT	A	GP	Bethel	250	8A / B	12.0		50,135	1,724	0	37,824	89,683	76,231
06-1666	Public Health Nurse 2	FT	A	GP	Juneau	205	23C / D	12.0		98,181	3,376	0	55,866	157,423	125,938
06-1667	Research Analyst 3	FT	A	GP	Kodiak	211	18A / B	10.0		58,817	2,023	0	37,918	98,758	79,006
06-1668	Office Assistant 2	FT	A	GP	Ketchikan	200	10J / K	12.0		47,249	1,625	0	36,741	85,615	72,773
06-1676	Nurse Consultant 2	FT	A	GP	Anchorage	200	26A / B	11.0		96,993	3,335	0	53,836	154,164	46,249
06-1680	Nurse Consultant 2	FT	A	GP	Anchorage	200	26E / F	12.0		123,065	4,232	0	65,210	192,507	57,752
06-1683	Health Program Associate	FT	A	GP	Fairbanks	203	16A / B	12.0		57,028	1,961	0	40,413	99,402	84,492
06-1685	Public Health Nurse 3	FT	A	GP	Nome	237	24J	12.0		163,313	5,366	0	80,132	248,811	174,168
06-1686	Public Health Nurse 3	FT	A	GP	Fairbanks	203	24A / B	10.0		81,832	2,814	0	46,560	131,206	104,965
06-1722	Public Health Nurse 2	FT	A	GP	Kenai	200	23A / B	12.0		89,130	3,065	0	52,467	144,662	115,730
06-1726	Health Program Associate	FT	A	GP	Wasilla	200	16C / D	12.0		58,262	2,003	0	40,876	101,141	85,970
06-1727	Public Health Nurse 2	PT	A	GP	Fairbanks	203	23D / E	6.0		49,909	1,716	0	23,491	75,116	60,093
06-1756	Public Health Informaticist 2	FT	A	GP	Anchorage	200	20A / B	12.0		73,476	2,527	0	46,589	122,592	36,778
06-1766	Administrative Assistant 2	FT	A	SS	Juneau	605	14M	12.0		62,004	853	0	44,955	107,812	91,640
06-1768	Office Assistant 1	FT	A	GP	Wasilla	200	8B / C	12.0		34,515	1,187	0	31,959	67,661	57,512
06-1769	Public Health Nurse 2	FT	A	GP	Wasilla	200	23F / G	12.0		105,134	3,615	0	58,476	167,225	133,780
06-1770	Public Health Nurse 3	FT	A	GP	Wasilla	200	24A / B	12.0		95,516	3,285	0	54,865	153,666	107,566
06-1798	Accounting Technician 1	FT	A	GP	Anchorage	200	12A / B	12.0		41,896	1,441	0	34,731	78,068	66,358
06-1802	Office Assistant 2	FT	A	GP	Wasilla	200	10N	12.0		52,007	1,788	0	38,527	92,322	78,474
06-1806	Office Assistant 2	FT	A	GP	Delta Junction	200	10E / F	12.0		42,318	1,455	0	34,889	78,662	66,863
06-1850	Public Health Nurse 1	FT	A	GP	Kodiak	211	22A / B	12.0		92,562	3,183	0	53,756	149,501	119,601
06-1851	Public Health Nurse 2	FT	A	GP	Kenai	200	23A / B	12.0		89,130	3,065	0	52,467	144,662	101,263
06-1854	Public Health Nurse 2	FT	A	GP	Wasilla	200	23A / B	12.0		89,915	3,092	0	52,762	145,769	116,615
06-1855	Public Health Nurse 2	FT	A	GP	Wasilla	200	23B / C	12.0		92,898	3,195	0	53,882	149,975	119,980
06-1906	Public Health Nurse 5	FT	A	GP	Kenai	200	26A / B	11.0		96,993	3,335	0	53,836	154,164	131,039
06-1907	Public Health Nurse 4	FT	A	GP	Anchorage	200	25A / B	11.0		93,735	3,223	0	52,613	149,571	127,135
06-1916	Public Health Nurse 3	FT	A	GP	Anchorage	200	24B / C	12.0		98,547	3,389	0	56,003	157,939	15,794

Note: If a position is split, an asterisk (*) will appear in the Split/Count column. If the split position is also counted in the component, two asterisks (**) will appear in this column. [No valid job title] appearing in the Job Class Title indicates that the PCN has an invalid class code or invalid range for the class code effective date of this scenario.

Personal Services Expenditure Detail
Department of Health

Scenario: FY2024 Governor (19867)
Component: Nursing (288)
RDU: Public Health (502)

PCN	Job Class Title	Time Status	Retire Code	Barg Unit	Location	Salary Sched	Range / Step	Comp Months	Split / Count	Annual Salaries	COLA	Premium Pay	Annual Benefits	Total Costs	UGF Amount
06-1917	Public Health Nurse 3	FT	A	GP	Nome	237	24A / B	10.0		108,851	3,743	0	56,706	169,300	135,440
06-1918	Public Health Nurse 3	FT	A	GP	Fairbanks	203	24K	12.0		126,770	4,359	0	66,601	197,730	19,773
06-2018	Public Health Nurse 2	FT	A	GP	Wasilla	200	23D / E	12.0		97,968	3,369	0	55,786	157,123	125,698
06-2023	Program Coordinator 1	FT	A	GP	Anchorage	200	18B / C	12.0		64,785	2,228	0	43,325	110,338	82,754
06-2049	Administrative Assistant 3	FT	A	GP	Nome	237	15A / B	12.0		70,610	2,428	0	45,513	118,551	94,841
06-2052	Public Health Nurse 3	FT	A	GP	Haines	200	24A / B	12.0		95,516	3,285	0	54,865	153,666	122,933
06-2054	Public Health Nurse 2	FT	A	GP	Kenai	200	23A / B	12.0		89,130	3,065	0	52,467	144,662	115,730

	Total Positions	New	Deleted
Full Time Positions:	157	0	0
Part Time Positions:	2	0	0
Non Permanent Positions:	0	0	0
Positions in Component:	159	0	0

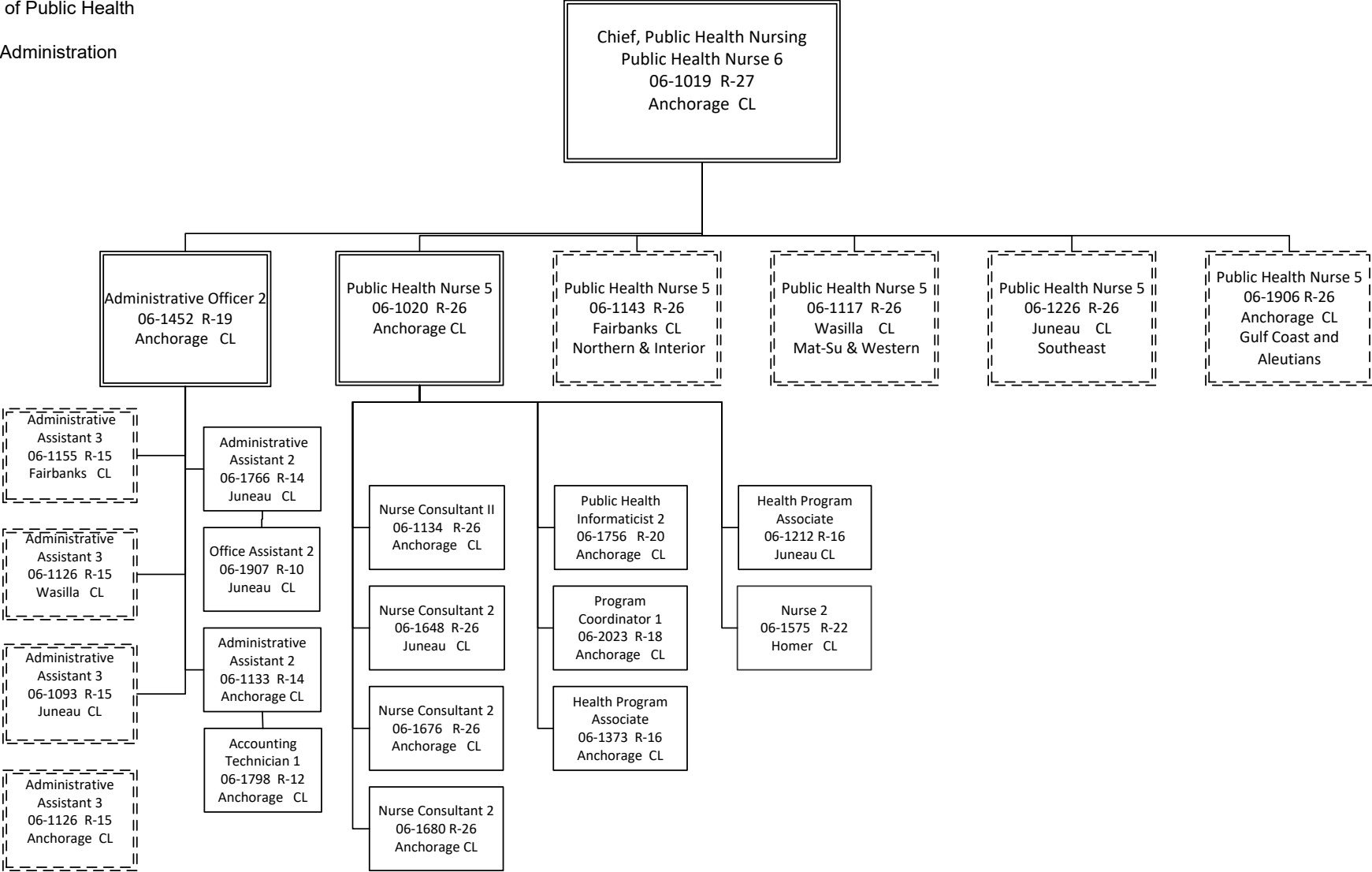
Total Salary Costs:	13,598,663
Total COLA:	421,024
Total Premium Pay:	428
Total Benefits:	8,056,827
Total Pre-Vacancy:	22,076,942
Minus Vacancy Adjustment of 4.78%:	(1,056,042)
Total Post-Vacancy:	21,020,900
Plus Lump Sum Premium Pay:	0
Personal Services Line 100:	21,020,900

Total Component Months: 1,830.6

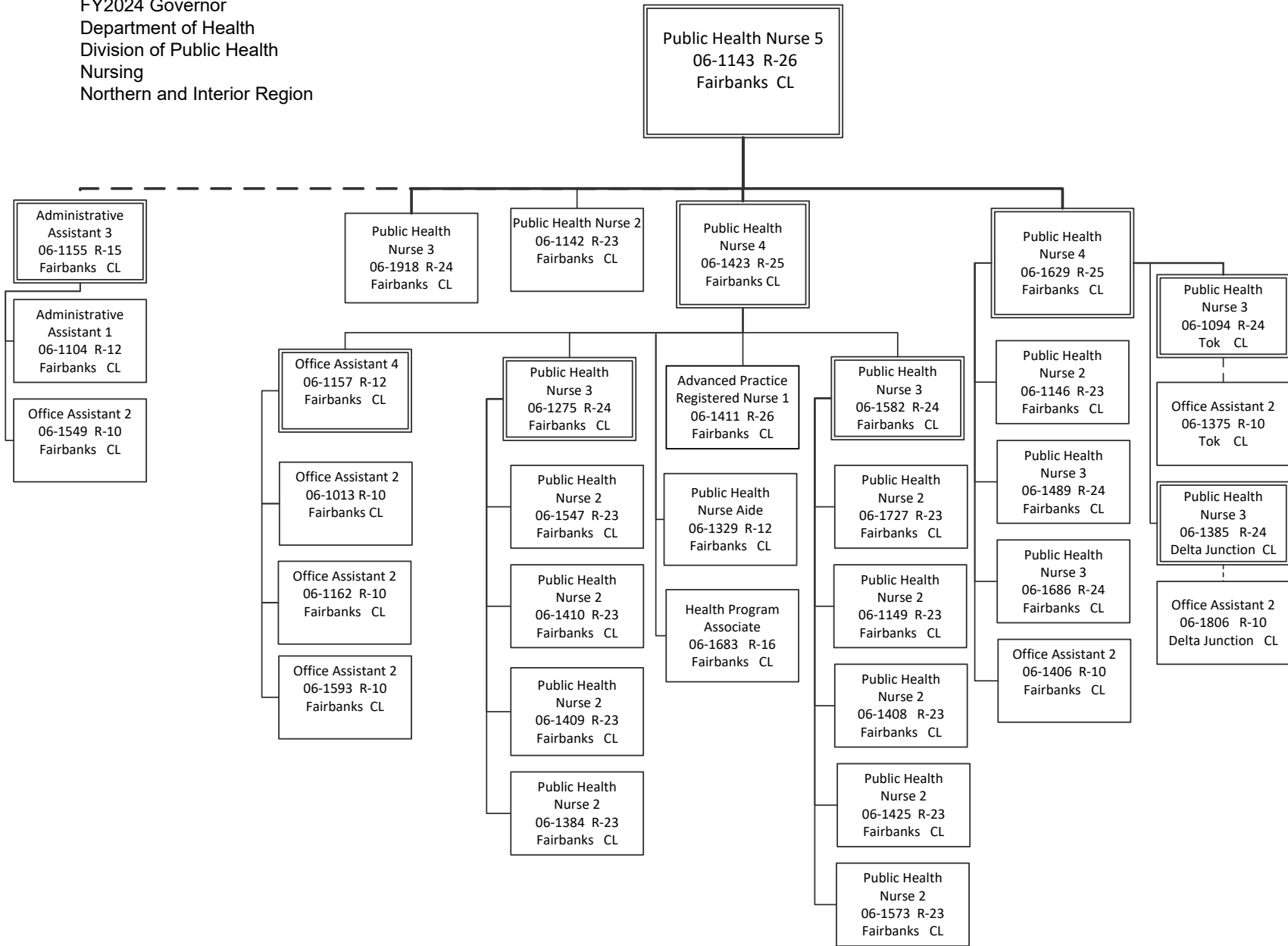
PCN Funding Sources:	Pre-Vacancy	Post-Vacancy	Percent
1002 Federal Receipts	6,216,926	5,919,542	28.16%
1003 General Fund Match	15,860,016	15,101,358	71.84%
Total PCN Funding:	22,076,942	21,020,900	100.00%

Note: If a position is split, an asterisk (*) will appear in the Split/Count column. If the split position is also counted in the component, two asterisks (**) will appear in this column. [No valid job title] appearing in the Job Class Title indicates that the PCN has an invalid class code or invalid range for the class code effective date of this scenario.

FY2024 Governor
 Department of Health
 Division of Public Health
 Nursing
 Central Administration

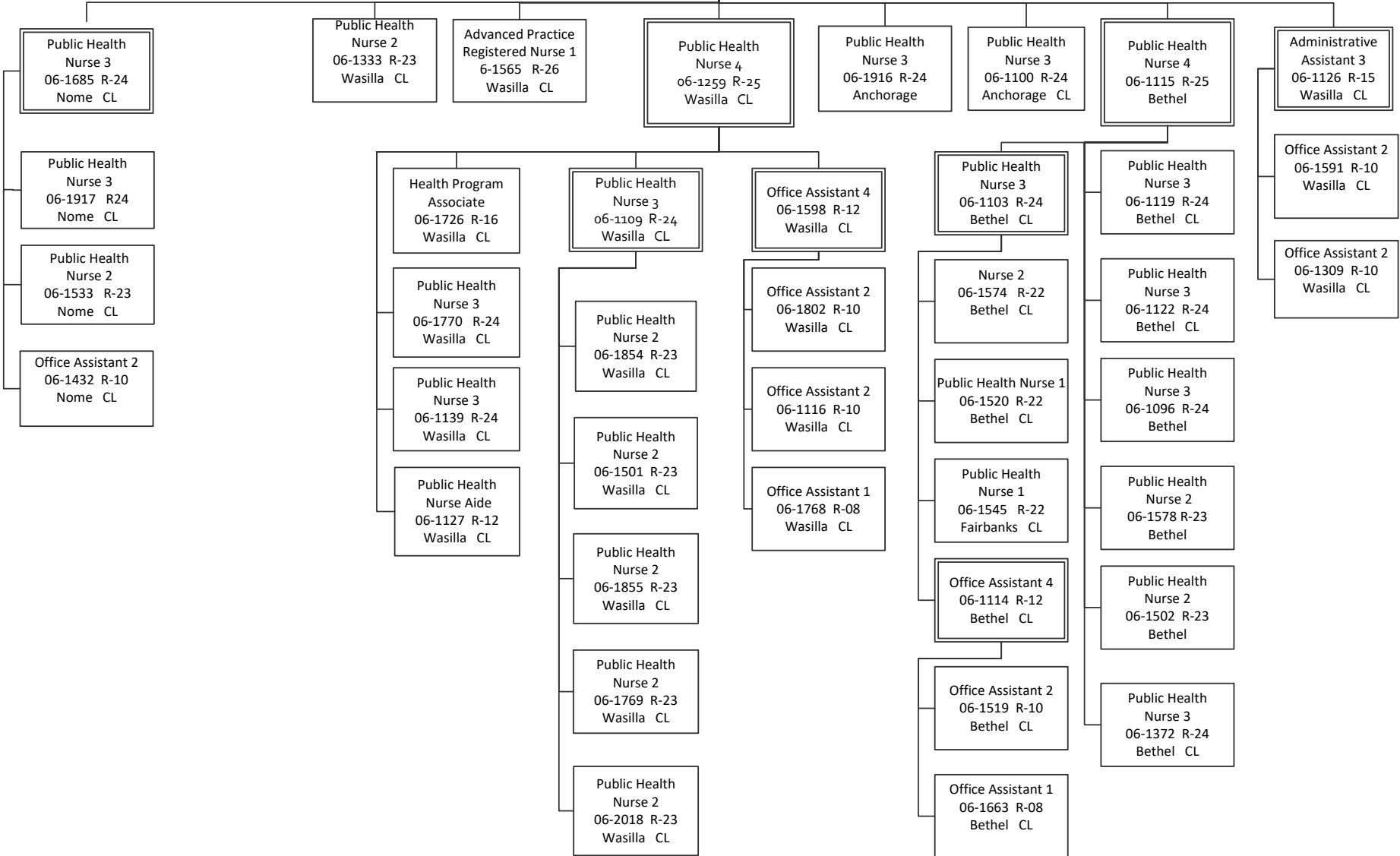


FY2024 Governor
 Department of Health
 Division of Public Health
 Nursing
 Northern and Interior Region

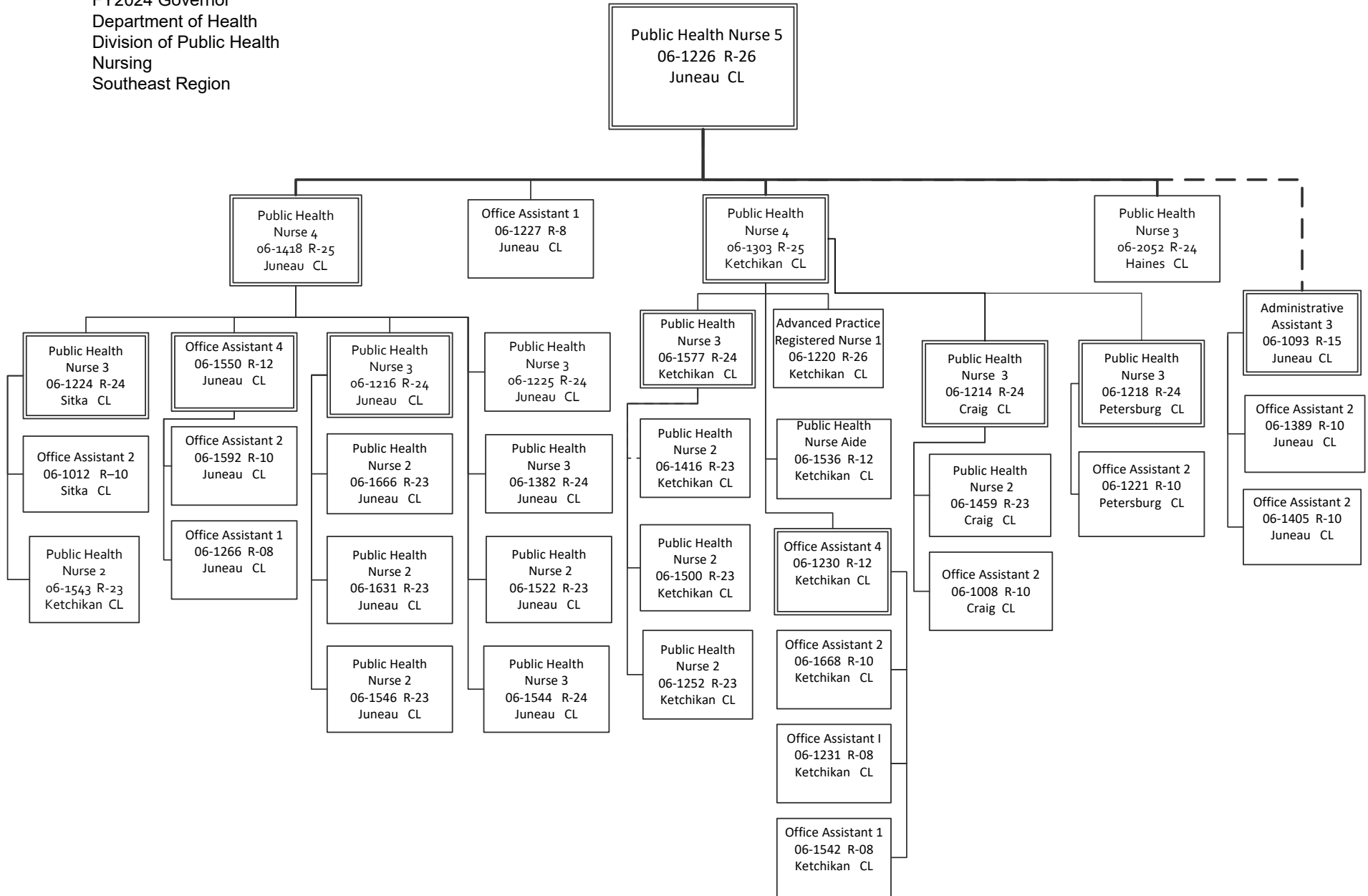


FY2024 Governor
 Department of Health
 Division of Public Health
 Nursing
 Western and Mat-Su Region

Public Health Nurse V
 06-1117 R-26
 Wasilla CL



FY2024 Governor
Department of Health
Division of Public Health
Nursing
Southeast Region



FY2024 Governor
 Department of Health
 Division of Public Health
 Nursing
 Gulf Coast and Aleutians Region

