

State of Alaska
FY2024 Governor's Operating Budget

Department of Labor and Workforce Development
Mechanical Inspection
Component Budget Summary

Component: Mechanical Inspection

Contribution to Department's Mission

Reduce hazards to life and property posed by unsafe boilers, pressure vessels, elevators, escalators, wheelchair lifts, recreational devices, and electrical and plumbing work.

Core Services

- Ensure boilers, pressure vessels, elevators, escalators, wheelchair lifts, recreational devices, and electrical and plumbing installations meet codes adopted by Alaska Statute.
- Ensure individuals engaged in electrical, plumbing, power line, boiler, asbestos, hazardous paint, and explosive work have an appropriate certificate of fitness.
- Provide assistance to the Department of Revenue, Child Support Enforcement Division, by identifying certificate of fitness applicants who are in arrears on child support payments.
- Provide investigative and enforcement services to ensure that electricians, plumbers, construction contractors and electrical/mechanical administrators have proper certificates and licenses.

Major Component Accomplishments in 2022

- Assigned staff conducted a total of 6,571 boiler, elevator, electrical, and plumbing inspections.
- Identified 638 code violations.
- Conducted 2,118 on-site construction project visits statewide to ensure contractor-licensing and Certificate of Fitness compliance, which resulted in 90 enforcement actions.

Key Component Challenges

The Mechanical Inspection component is challenged to continue providing onsite inspection and education to Alaska's communities given travel restrictions and the high cost of rural travel.

Significant Changes in Results to be Delivered in FY2024

No significant changes in results to be delivered are anticipated.

Statutory and Regulatory Authority

Statutory Authority:

AS 05.20.010 - .120	Recreational Devices
AS 08.18.011 - .171	Construction Contractors
AS 18.31.010 - .500	Asbestos Health Hazard Abatement
AS 08.52.010 - .100	Explosives Handlers
AS 18.60.180 - .395	Boilers
AS 18.60.580 - .660	Electrical Safety
AS 18.60.670 - .695	High Voltage Lines
AS 18.60.705 - .740	Plumbing Code
AS 18.60.800 - .820	Elevators
AS 18.62.010 - .080	Certificate of Fitness
AS 18.63.010 - .100	Hazardous Painting Certification
AS 23.05.060	Certificate of Fitness - Powers of the Department
AS 25.27.244	Certificate of Fitness - Child Support Enforcement
AS 44.31.025	Building Safety Account
AS 44.62.450	Hearings - Amusement park/tramway rides
AS 45.45.910	Electrical Safety - Sale or transfer of consumer electrical products

Administrative Regulations:

8 AAC 61.600 - .790	Asbestos Abatement Certification
8 AAC 61.800 - .890	Painting Certification
8 AAC 62.010 - .070	Explosives Handlers
8 AAC 63.010 - .030	Plumbing Code
8 AAC 70.010 - .090	Electrical Safety
8 AAC 77.005 - .905	Elevator Safety
8 AAC 78.010 - .900	Amusement Rides and Tramways
8 AAC 80.010 - .900	Boilers & Pressure Vessels
8 AAC 90.105 - .900	Certificates of Fitness
12 AAC 21.010 - .990	Construction Contractors

Contact Information
<p>Contact: William, Director Phone: (907) 269-4961 E-mail: william.harlan@alaska.gov</p>

Mechanical Inspection Personal Services Information				
Authorized Positions			Personal Services Costs	
	FY2023 Management Plan	FY2024 Governor		
Full-time	20	20	Annual Salaries	1,524,515
Part-time	0	0	COLA	54,164
Nonpermanent	0	0	Premium Pay	3,840
			Annual Benefits	979,966
			<i>Less 3.65% Vacancy Factor</i>	(93,585)
			Lump Sum Premium Pay	0
Totals	20	20	Total Personal Services	2,468,900

Position Classification Summary					
Job Class Title	Anchorage	Fairbanks	Juneau	Others	Total
Accounting Technician 1	1	0	0	0	1
Administrative Assistant 1	1	0	0	0	1
B&P Vsl Insp 1	2	1	0	1	4
B&P Vsl Insp 2	1	0	0	0	1
Investigator 3	1	0	0	0	1
Mechanical Inspection Manager	1	0	0	0	1
Occupational License Examiner	2	0	0	0	2
SIC Elect Insp	0	0	1	2	3
SIC Elevat Insp	0	1	0	2	3
SIC Plumb Insp	0	1	0	2	3
Totals	9	3	1	7	20

Component Detail All Funds
Department of Labor and Workforce Development

Component: Mechanical Inspection (346)
RDU: Labor Standards and Safety (113)

Non-Formula Component

	FY2022 Actuals	FY2023 Conference Committee	FY2023 Authorized	FY2023 Management Plan	FY2024 Governor	FY2023 Management Plan vs FY2024 Governor	
71000 Personal Services	1,930.4	2,556.1	2,469.8	2,374.8	2,468.9	94.1	4.0%
72000 Travel	82.9	115.0	115.0	115.0	115.0	0.0	0.0%
73000 Services	341.7	466.9	474.4	569.4	538.4	-31.0	-5.4%
74000 Commodities	10.2	20.0	20.0	20.0	20.0	0.0	0.0%
75000 Capital Outlay	0.0	0.0	0.0	0.0	0.0	0.0	0.0%
77000 Grants, Benefits	0.0	0.0	0.0	0.0	0.0	0.0	0.0%
78000 Miscellaneous	0.0	0.0	0.0	0.0	0.0	0.0	0.0%
Totals	2,365.2	3,158.0	3,079.2	3,079.2	3,142.3	63.1	2.0%
Fund Sources:							
1004 Gen Fund (UGF)	0.0	293.9	293.9	293.9	293.9	0.0	0.0%
1005 GF/Prgm (DGF)	70.9	138.1	138.1	138.1	141.1	3.0	2.2%
1007 I/A Rcpts (Other)	518.4	761.6	761.6	761.6	777.5	15.9	2.1%
1172 Bldg Safe (DGF)	1,775.9	1,964.4	1,885.6	1,885.6	1,929.8	44.2	2.3%
Unrestricted General (UGF)	0.0	293.9	293.9	293.9	293.9	0.0	0.0%
Designated General (DGF)	1,846.8	2,102.5	2,023.7	2,023.7	2,070.9	47.2	2.3%
Other Funds	518.4	761.6	761.6	761.6	777.5	15.9	2.1%
Federal Funds	0.0	0.0	0.0	0.0	0.0	0.0	0.0%
Positions:							
Permanent Full Time	21	21	20	20	20	0	0.0%
Permanent Part Time	0	0	0	0	0	0	0.0%
Non Permanent	0	0	0	0	0	0	0.0%

Change Record Detail - Multiple Scenarios with Descriptions
Department of Labor and Workforce Development

Component: Mechanical Inspection (346)
RDU: Labor Standards and Safety (113)

Scenario/Change Record Title	Trans Type	Totals	Personal Services	Travel	Services	Commodities	Capital Outlay	Grants, Benefits	Miscellaneous	Positions		NP
										PFT	PPT	
***** Changes From FY2023 Conference Committee To FY2023 Authorized *****												
FY2023 Conference Committee												
ConfCom		3,158.0	2,556.1	115.0	466.9	20.0	0.0	0.0	0.0	21	0	0
1004 Gen Fund		293.9										
1005 GF/Prgm		138.1										
1007 I/A Rcpts		761.6										
1172 Bldg Safe		1,964.4										
Unallocated Rates Adjustment												
Unalloc		7.5	0.0	0.0	7.5	0.0	0.0	0.0	0.0	0	0	0
1172 Bldg Safe		7.5										
This change will be allocated across the department's programs in accordance with the department's approved cost allocation processes.												
Boiler & Pressure Vessel Inspector 1 (07-4527) Vacant for Two Years												
Veto		-88.3	-88.3	0.0	0.0	0.0	0.0	0.0	0.0	-1	0	0
1172 Bldg Safe		-88.3										
FY2023 Exempt 5% COLA												
SalAdj		2.0	2.0	0.0	0.0	0.0	0.0	0.0	0.0	0	0	0
1172 Bldg Safe		2.0										
FY2023 Exempt 5% COLA: \$2.0												
Subtotal		3,079.2	2,469.8	115.0	474.4	20.0	0.0	0.0	0.0	20	0	0
***** Changes From FY2023 Authorized To FY2023 Management Plan *****												
Align Authority with Anticipated Expenditures												
LIT		0.0	-95.0	0.0	95.0	0.0	0.0	0.0	0.0	0	0	0
Transfer authority from personal services to services to cover anticipated costs. The remaining personal services authority is sufficient to meet anticipated expenditures.												
Subtotal		3,079.2	2,374.8	115.0	569.4	20.0	0.0	0.0	0.0	20	0	0
***** Changes From FY2023 Management Plan To FY2024 Governor *****												
Transfer Authority for Anticipated Personal Services Costs												
LIT		0.0	31.0	0.0	-31.0	0.0	0.0	0.0	0.0	0	0	0
Transfer authority to personal services from services to cover anticipated costs and align personal services authority with projected FY2024 expenditures. The remaining services authority is sufficient to meet anticipated expenditures.												

Change Record Detail - Multiple Scenarios with Descriptions
Department of Labor and Workforce Development

Component: Mechanical Inspection (346)
RDU: Labor Standards and Safety (113)

Scenario/Change Record Title	Trans Type	Totals	Personal Services	Travel	Services	Commodities	Capital Outlay	Grants, Benefits	Miscellaneous	Positions		NP
										PFT	PPT	
FY2024 PERS Rate Adjustment												
	SalAdj	4.6	4.6	0.0	0.0	0.0	0.0	0.0	0.0	0	0	0
1005 GF/Prgm		0.2										
1007 I/A Rcpts		1.1										
1172 Bldg Safe		3.3										
FY2024 PERS rate adjustment to 25.10%: \$4.6												
FY2024 Salary and Health Insurance Increases												
	SalAdj	58.2	58.2	0.0	0.0	0.0	0.0	0.0	0.0	0	0	0
1005 GF/Prgm		2.8										
1007 I/A Rcpts		14.8										
1172 Bldg Safe		40.6										
FY2024 Salary and Health Insurance Increases: \$58.2												
FY2024 GGU cost of living increase 2.5%: \$20.0												
FY2024 LTC cost of living increase 3.25%: \$28.8												
FY2024 SU cost of living increase 1%: \$3.1												
FY2024 AlaskaCare insurance from \$1,685 to \$1,793 per member per month.: \$3.1												
FY2024 GGU health insurance increase from \$1,567.50 to \$1,573.50 per member per month.: \$0.6												
FY2024 LTC health insurance increase from \$1,580 to \$1,605 per member per month.: \$2.6												
FY2024 AlaskaCare Health Insurance Increase - Exempt and Partially Exempt												
	SalAdj	0.3	0.3	0.0	0.0	0.0	0.0	0.0	0.0	0	0	0
1172 Bldg Safe		0.3										
FY2024 AlaskaCare health insurance increase for exempt and partially exempt employees from \$1,685 to \$1,793 per member per month.: \$0.3												
Totals		3,142.3	2,468.9	115.0	538.4	20.0	0.0	0.0	0.0	20	0	0

Line Item Detail (1676)
Department of Labor and Workforce Development
Travel

Component: Mechanical Inspection (346)

Line Number	Line Name		FY2022 Actuals	FY2023 Management Plan	FY2024 Governor
2000	Travel		82.9	115.0	115.0
Object Class	Servicing Agency	Explanation	FY2022 Actuals	FY2023 Management Plan	FY2024 Governor
2000 Travel Detail Totals			82.9	115.0	115.0
2000	In-State Employee Travel	In-state employee travel to support the department's mission.	82.0	101.0	100.0
2002	Out of State Employee Travel	Out of state employee travel.	0.8	13.9	14.9
2006	Other Travel Costs	Cash advance fees.	0.1	0.1	0.1

Line Item Detail (1676)
Department of Labor and Workforce Development
Services

Component: Mechanical Inspection (346)

Line Number	Line Name		FY2022 Actuals	FY2023 Management Plan	FY2024 Governor
3000	Services		341.7	569.4	538.4
Object Class	Servicing Agency	Explanation	FY2022 Actuals	FY2023 Management Plan	FY2024 Governor
3000 Services Detail Totals			341.7	569.4	538.4
3000	Education Services	Training, education, and memberships.	1.2	20.0	20.0
3001	Financial Services	Financial services, including auditing and accounting, consulting, insurance, or interest expense.	0.0	5.0	5.0
3003	Information Technology	Information technology, including training, consulting, leases, and software licensing and maintenance.	3.0	15.0	15.0
3004	Telecommunications	Local, long distance, and cellular telephone charges, television, data/network, telecommunication equipment, and other wireless charges from outside vendors.	6.7	10.0	15.0
3006	Delivery Services	Freight, courier services, and postage.	3.2	15.0	20.0
3008	Utilities	Electricity, heating fuel, water, sewage, recycling, heating fuel, trash, and confidential document and other disposal services.	0.6	20.0	20.0
3009	Structure/Infrastructure/Land	Room rental for training and seminar space, board or council meetings, or storage and archiving needs.	0.0	20.0	20.0
3010	Equipment/Machinery	Machinery, furniture, and equipment purchase, repairs, maintenance, rentals, and leases.	2.8	23.8	23.8
3011	Other Services	Other services, including interpreters; consulting; print, copy,	15.1	15.0	15.0

Line Item Detail (1676)
Department of Labor and Workforce Development
Services

Component: Mechanical Inspection (346)

Object Class	Servicing Agency	Explanation	FY2022 Actuals	FY2023 Management Plan	FY2024 Governor
3000 Services Detail Totals			341.7	569.4	538.4
3012	Inter-Agency Federal Indirect Rate Allocation	Labor - Management Services (335) Indirect cost allocation for departmental purchasing, accounting, reports, personnel consultation and other services provided by Management Services.	121.6	123.0	123.0
3013	Inter-Agency Data Processing Operations Allocation	Admin - Department-wide Allocation for Data Processing network and support services.	10.5	14.8	14.8
3017	Inter-Agency Information Technology Non-Telecommunications	Admin - Department-wide Reimbursable services agreement with the Office of Information Technology rate for non-telecommunications support, including software and computer services.	57.5	66.5	66.5
3018	Inter-Agency Information Technology Telecommunications	Admin - Department-wide Reimbursable services agreement with the Office of Information Technology for telecommunication support.	6.2	6.5	6.5
3021	Inter-Agency Mail	Admin - Department-wide Reimbursable services agreement with Shared Services of Alaska for central mailroom support and services.	0.6	0.7	0.7
3022	Inter-Agency Human Resources	Admin - Department-wide Reimbursable services agreement with the Division of Personnel and Labor Relations for human resources and personnel services.	13.0	14.2	14.2
3023	Inter-Agency Building Leases	Admin - Department-wide State-owned facility space rent or other property leases.	45.5	75.0	75.0
3024	Inter-Agency Legal	Law - Department-wide Reimbursable services agreement with the Department of Law for legal services.	0.0	67.1	25.3
3025	Inter-Agency Auditing	Admin - Department-wide Reimbursable services agreement	0.0	0.0	0.8

Line Item Detail (1676)
Department of Labor and Workforce Development
Services

Component: Mechanical Inspection (346)

Object Class	Servicing Agency	Explanation	FY2022 Actuals	FY2023 Management Plan	FY2024 Governor
3000 Services Detail Totals			341.7	569.4	538.4
		with the Department of Administration for auditing services, including federal compliance audits.			
3026	Inter-Agency Insurance	Admin - Department-wide			
		Reimbursable services agreement with the Division of Risk Management for risk management insurance charges for leased buildings, repossessed properties, public official bonds, and overhead.	2.0	2.0	2.0
3027	Inter-Agency Financial	Admin - Department-wide			
		Reimbursable services agreement with the Division of Finance for system services for State accounting and payroll (IRIS), and reporting (ALDER) systems.	3.7	4.8	4.8
3030	Inter-Agency Hearing/Mediation	Admin - Department-wide			
		Reimbursable services agreement with Department of Administration for hearing and mediation services.	0.4	1.0	1.0
3037	State Equipment Fleet	Trans - Department-wide			
		State equipment fleet fixed cost services for equipment replacement, maintenance and fuel, both allowable and non-allowable.	48.1	50.0	50.0

Line Item Detail (1676)
Department of Labor and Workforce Development
Commodities

Component: Mechanical Inspection (346)

Line Number	Line Name		FY2022 Actuals	FY2023 Management Plan	FY2024 Governor
4000	Commodities		10.2	20.0	20.0
Object Class	Servicing Agency	Explanation	FY2022 Actuals	FY2023 Management Plan	FY2024 Governor
4000 Commodities Detail Totals			10.2	20.0	20.0
4000	Business	General business supplies such as office consumables and computer equipment.	9.8	14.8	15.0
4002	Household/Institutional	Office supplies, supplies and consumables for public meetings, and cleaning products.	0.2	5.2	5.0
4004	Safety	Safety gear and protective clothing.	0.2	0.0	0.0

Revenue Detail (1681)
Department of Labor and Workforce Development

Component: Mechanical Inspection (346)

Revenue Type (OMB Fund Code) Revenue Source	Component	Comment	FY2022 Actuals	FY2023 Management Plan	FY2024 Governor
5005 GF/Prgm (1005 GF/Prgm)			70.9	138.1	141.1
5101 Program Receipts Public Protection - Licenses and Permits		Program receipts from Certificates of Fitness fees.	70.9	138.1	141.1
5007 I/A Rcpts (1007 I/A Rcpts)			518.4	761.6	777.5
5301 Inter-Agency Receipts	Labor - Occupational Safety and Health (970)	Reimbursable services agreement for occupational safety inspections.	310.0	310.0	310.0
5301 Inter-Agency Receipts	Commerce - Department-wide	Inter-Agency Receipts.	25.5	350.0	350.0
5301 Inter-Agency Receipts	Rev - Department-wide	Reimbursable services agreement for child support assistance in regards to occupational licensing.	60.0	60.0	60.0
5301 Inter-Agency Receipts		Uncollected revenue reserved for future flexibility.	122.9	41.6	57.5
6172 Bldg Safe (1172 Bldg Safe)			1,775.9	1,885.6	1,929.8
6820 Building Safety Account - Chrgs for Srvcs Misc		Building Safety Account (AS 44.31.025) revenue is generated from fees for inspections of boilers, pressure vessels, and lifting devices such as elevators, and fees for certificates of fitness for plumbers and electricians.	1,775.9	1,885.6	1,929.8

Inter-Agency Services (1682)
Department of Labor and Workforce Development

Component: Mechanical Inspection (346)

				FY2022 Actuals	FY2023 Management Plan	FY2024 Governor
Component Totals				309.1	425.6	384.6
With Department of Labor and Workforce Development				121.6	123.0	123.0
With Department of Administration				139.4	185.5	186.3
With Department of Law				0.0	67.1	25.3
With Department of Transportation/Public Facilities				48.1	50.0	50.0
Object Class	Servicing Agency	Explanation		FY2022 Actuals	FY2023 Management Plan	FY2024 Governor
3012	Inter-Agency Federal Indirect Rate Allocation	Labor - Management Services (335)	Indirect cost allocation for departmental purchasing, accounting, reports, personnel consultation and other services provided by Management Services.	121.6	123.0	123.0
3013	Inter-Agency Data Processing Operations Allocation	Admin - Department-wide	Allocation for Data Processing network and support services.	10.5	14.8	14.8
3017	Inter-Agency Information Technology Non-Telecommunications	Admin - Department-wide	Reimbursable services agreement with the Office of Information Technology rate for non-telecommunications support, including software and computer services.	57.5	66.5	66.5
3018	Inter-Agency Information Technology Telecommunications	Admin - Department-wide	Reimbursable services agreement with the Office of Information Technology for telecommunication support.	6.2	6.5	6.5
3021	Inter-Agency Mail	Admin - Department-wide	Reimbursable services agreement with Shared Services of Alaska for central mailroom support and services.	0.6	0.7	0.7
3022	Inter-Agency Human Resources	Admin - Department-wide	Reimbursable services agreement with the Division of Personnel and Labor Relations for human resources and personnel services.	13.0	14.2	14.2

Inter-Agency Services (1682)
Department of Labor and Workforce Development

Component: Mechanical Inspection (346)

Object Class	Servicing Agency	Explanation	FY2022 Actuals	FY2023 Management Plan	FY2024 Governor
3023 Inter-Agency Building Leases	Admin - Department-wide	State-owned facility space rent or other property leases.	45.5	75.0	75.0
3024 Inter-Agency Legal	Law - Department-wide	Reimbursable services agreement with the Department of Law for legal services.	0.0	67.1	25.3
3025 Inter-Agency Auditing	Admin - Department-wide	Reimbursable services agreement with the Department of Administration for auditing services, including federal compliance audits.	0.0	0.0	0.8
3026 Inter-Agency Insurance	Admin - Department-wide	Reimbursable services agreement with the Division of Risk Management for risk management insurance charges for leased buildings, repossessed properties, public official bonds, and overhead.	2.0	2.0	2.0
3027 Inter-Agency Financial	Admin - Department-wide	Reimbursable services agreement with the Division of Finance for system services for State accounting and payroll (IRIS), and reporting (ALDER) systems.	3.7	4.8	4.8
3030 Inter-Agency Hearing/Mediation	Admin - Department-wide	Reimbursable services agreement with Department of Administration for hearing and mediation services.	0.4	1.0	1.0
3037 State Equipment Fleet	Trans - Department-wide	State equipment fleet fixed cost services for equipment replacement, maintenance and fuel, both allowable and non-allowable.	48.1	50.0	50.0

Personal Services Expenditure Detail
Department of Labor and Workforce Development

Scenario: FY2024 Governor (19867)
Component: Mechanical Inspection (346)
RDU: Labor Standards and Safety (113)

PCN	Job Class Title	Time Status	Retire Code	Barg Unit	Location	Salary Sched	Range / Step	Comp Months	Split / Count	Annual Salaries	COLA	Premium Pay	Annual Benefits	Total Costs	UGF Amount
07-1212	Occupational License Examiner	FT	A	GP	Anchorage	200	14D / E	12.0		53,473	1,842	0	39,206	94,521	0
07-2014	Administrative Assistant 1	FT	A	GP	Juneau	205	12C / D	5.0	*	19,817	683	0	15,405	35,905	0
07-2016	Regulations Specialist 2	FT	A	GP	Anchorage	100	16A	1.0	*	4,664	161	0	3,346	8,171	0
07-2040	Administrative Officer 2	FT	A	SS	Juneau	205	19D	2.0	*	14,074	194	0	8,931	23,199	0
07-2055	Administrative Assistant 2	FT	A	SS	Anchorage	200	14C / D	2.0	*	9,240	127	0	7,104	16,471	0
07-2069	SIC Elect Insp	FT	A	LL	Palmer	2BB	49F	12.0		76,134	3,409	0	48,044	127,587	0
07-2078	Investigator 3	FT	A	GP	Anchorage	200	18D / E	12.0		68,776	2,369	0	44,989	116,134	0
07-2079	SIC Elevat Insp	FT	A	LL	Palmer	2BB	49M	12.0		88,071	3,944	0	52,555	144,570	0
07-4004	Administrative Assistant 1	FT	A	GP	Anchorage	200	12B	3.0	*	10,870	374	0	8,857	20,101	0
07-4014	Division Director - Px	FT	A	XE	Anchorage	N00	27D	2.0	*	20,502	0	0	11,336	31,838	0
07-4016	Mechanical Inspection Manager	FT	A	SS	Anchorage	200	22E / F	12.0		102,283	1,409	0	60,325	164,017	0
07-4028	Administrative Assistant 1	FT	A	GP	Anchorage	200	12A / B	5.4	**	19,138	659	0	15,782	35,579	0
07-4507	Accounting Technician 1	FT	A	GP	Anchorage	200	12E / F	12.0		46,964	1,618	0	36,746	85,328	0
07-4508	B&P Vsl Insp 1	FT	A	GP	Anchorage	200	19E / F	12.0		78,412	2,741	1,168	49,072	131,393	0
07-4509	B&P Vsl Insp 2	FT	A	SS	Anchorage	200	20L / M	12.0		101,229	1,395	0	59,927	162,551	0
07-4511	SIC Elevat Insp	FT	A	LL	Fairbanks	2EE	49F / J	12.0		79,559	3,563	0	49,338	132,460	0
07-4519	SIC Elect Insp	FT	A	LL	Juneau	2AA	49A / B	12.0		63,931	2,863	0	43,432	110,226	0
07-4520	SIC Plumb Insp	FT	A	LL	Fairbanks	2EE	49A / B	12.0		64,067	2,869	0	43,484	110,420	0
07-4523	SIC Plumb Insp	FT	A	LL	Palmer	2BB	49E / F	12.0		75,817	3,395	0	47,924	127,136	0
07-4526	SIC Elect Insp	FT	A	LL	Palmer	2BB	49J / K	12.0		80,184	3,591	0	49,574	133,349	0
07-4541	B&P Vsl Insp 1	FT	A	GP	Anchorage	200	19L / M	12.0		92,913	3,248	1,386	54,634	152,181	0
07-4544	SIC Plumb Insp	FT	A	LL	Palmer	2BB	49F	12.0		76,134	3,409	0	48,044	127,587	0
07-4545	B&P Vsl Insp 1	FT	A	GP	Fairbanks	203	19G	12.0		83,597	2,924	1,286	51,076	138,883	0
07-4546	B&P Vsl Insp 1	FT	A	GP	Palmer	200	19B / C	12.0		69,040	2,378	0	45,089	116,507	0
07-4547	SIC Elevat Insp	FT	A	LL	Palmer	2BB	49A / B	12.0		64,909	2,907	0	43,802	111,618	0
07-4548	Occupational License Examiner	FT	A	GP	Anchorage	200	14J / K	12.0		60,717	2,092	0	41,944	104,753	0

Note: If a position is split, an asterisk (*) will appear in the Split/Count column. If the split position is also counted in the component, two asterisks (**) will appear in this column. [No valid job title] appearing in the Job Class Title indicates that the PCN has an invalid class code or invalid range for the class code effective date of this scenario.

Personal Services Expenditure Detail
Department of Labor and Workforce Development

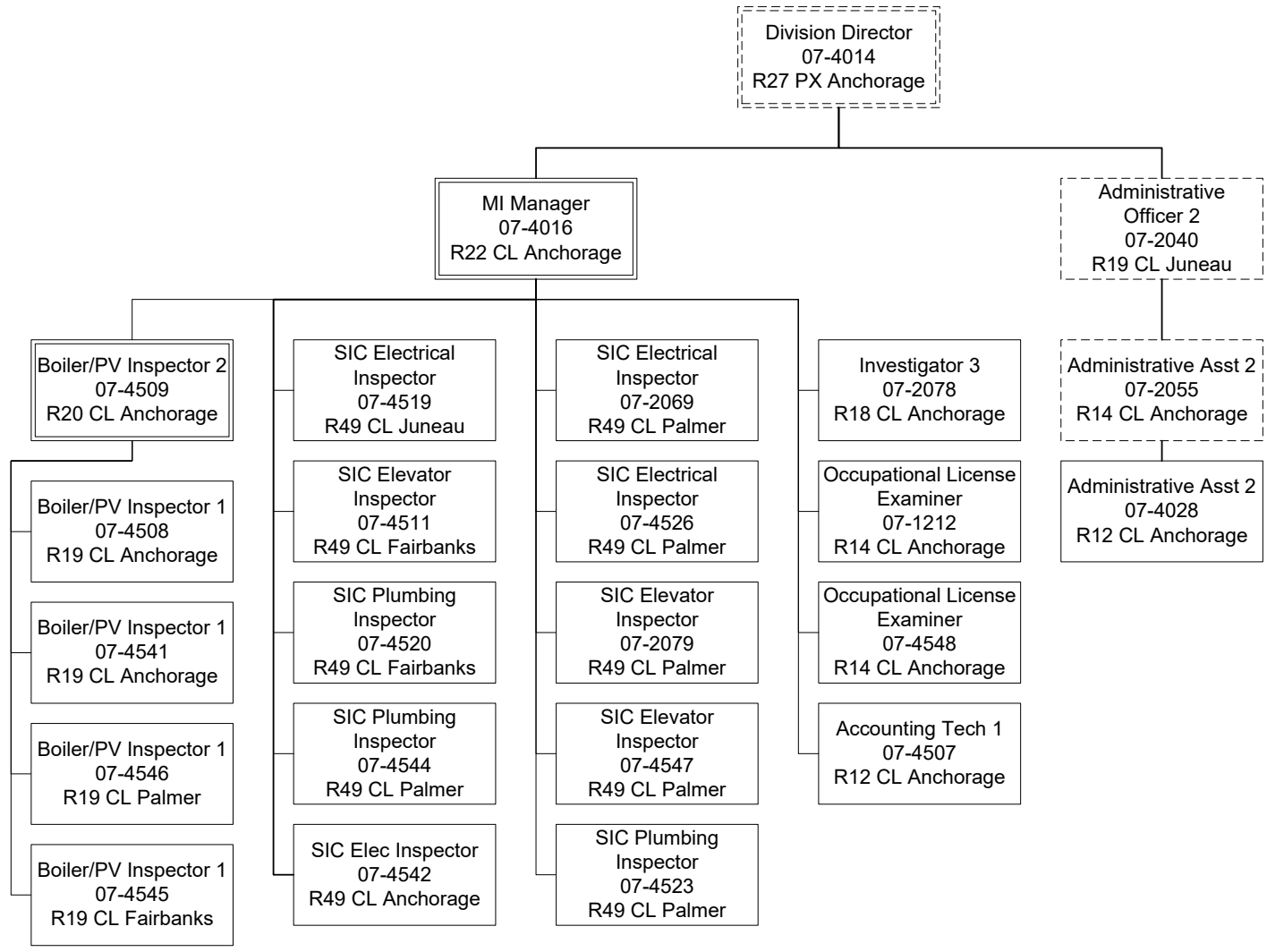
Scenario: FY2024 Governor (19867)
Component: Mechanical Inspection (346)
RDU: Labor Standards and Safety (113)

PCN	Job Class Title	Time Status	Retire Code	Barg Unit	Location	Salary Sched	Range / Step	Comp Months	Split / Count	Annual Salaries	COLA	Premium Pay	Annual Benefits	Total Costs	UGF Amount
		Total Positions	New	Deleted										Total Salary Costs:	1,524,515
														Total COLA:	54,164
	Full Time Positions:	20	0	0										Total Premium Pay:	3,840
	Part Time Positions:	0	0	0										Total Benefits:	979,966
	Non Permanent Positions:	0	0	0											
	Positions in Component:	20	0	0											
	Total Component Months:	248.4													
														Total Pre-Vacancy:	2,562,485
														Minus Vacancy Adjustment of 3.65%:	(93,585)
														Total Post-Vacancy:	2,468,900
														Plus Lump Sum Premium Pay:	0
														Personal Services Line 100:	2,468,900

PCN Funding Sources:	Pre-Vacancy	Post-Vacancy	Percent
1005 General Fund/Program Receipts	142,301	137,104	5.55%
1007 Interagency Receipts	633,061	609,940	24.70%
1172 Building Safety Account	1,787,123	1,721,856	69.74%
Total PCN Funding:	2,562,485	2,468,900	100.00%

Note: If a position is split, an asterisk (*) will appear in the Split/Count column. If the split position is also counted in the component, two asterisks (**) will appear in this column. [No valid job title] appearing in the Job Class Title indicates that the PCN has an invalid class code or invalid range for the class code effective date of this scenario.

Department of Labor and Workforce Development
 Labor Standards and Safety - Mechanical Inspection
 FY2024 Governor Organization Chart



PV = Pressure Vessel
 SIC = Safety Inspection and Compliance