

State of Alaska FY2024 Governor's Operating Budget

Department of Labor and Workforce Development Unemployment Insurance Component Budget Summary

Component: Unemployment Insurance**Contribution to Department's Mission**

Provide economic stability for communities in Alaska through payment of unemployment insurance benefits that keep skilled workers in Alaska.

Core Services

- Pay Unemployment Insurance (UI) benefits to eligible unemployed workers.
- Assess and collect UI tax contributions.
- Provide web-based services and products to workers and employers for accessing the Tax Online System and Benefit Internet Filing system.
- Work with and educate employers on how to fulfill contribution and reporting requirements.
- Protect integrity of the UI Trust Fund by preventing, detecting, and recovering benefit overpayments.

Major Component Accomplishments in 2022

- Paid UI benefits in a timely manner to 92,665 claimants, totaling over \$865 million in benefits to assist workers who were temporarily out of work due to no fault of their own.
- UI claim centers responded to 589,780 phone calls from claimants and employers. 99 percent of clients used automated systems to file their weekly claims.
- Deposited over \$119 million of UI contributions into the UI Tax Trust Account. Over \$19.4 million was collected and deposited into the accounts of the State Training and Employment Program and Alaska Technical and Vocational Education Program.
- The UI program collected \$1.6 million in overpaid benefits from fraudulent claims.
- Recovered \$1,029,480 dollars through garnishment of IRS tax returns of claimants and employers who owe the UI Trust Fund due to fraudulent claims or past due contributions.
- In coordination with Workforce Services, participated in rapid response activities that affected hundreds of workers due to COVID-19 related closures of businesses. Rapid response meetings were critical in educating laid off workers about the UI program, filing requirements, and available reemployment services.

Key Component Challenges

The UI program faced a critical challenge with its antiquated Legacy mainframe system. The pandemic brought the 30-year-old system shortcomings to the forefront as Congress passed many new UI programs to help unemployed workers affected by the pandemic. Although Congress provided \$2 billion to the U.S. Department of Labor (USDOL) to modernize state UI systems, USDOL decided to not provide states with direct funding to replace antiquated UI systems.

With the end of the UI programs enacted due to the COVID-19 pandemic, Alaska has started to close out the multiple programs and is gearing up for the associated audits. These audits include the state's Division of Legislative Audit, Federal Emergency Management Agency (FEMA) for the Lost Wage Assistance (LWA) program, and USDOL audits for multiple CARES Act programs. The audits consume a great deal of staff time and agency resources.

Due to the COVID-19 pandemic, prior initiatives were paused to enact the multiple UI programs passed by Congress and the state legislature. With the end of the pandemic, work is resuming to expand the use of claimant oriented automated services to more efficiently process new and additional claims and provide UI notifications and questionnaires via the claimants chosen email address. Additionally, the program is continuing work to upgrade the Tax Online System to better serve the needs of Alaskan employers and allow for more efficient automated filing of quarterly contribution reports and online payment of employment security taxes.

Significant Changes in Results to be Delivered in FY2024

The Benefit Payment Control Unit is implementing new software and strategies to detect fraudulent UI claims as they are initiated. The goal is to focus on identity theft and automatically flag suspicious claims for further investigation prior to payments being issued, thereby reducing fraud and overpayments.

The UI program continues to collaborate with Workforce Services and Workforce Development partners to implement strategies to speed unemployment insurance claimants' return to work. Alaska's Reemployment Services and Eligibility Assessment (RESEA) program began its evidence-based evaluation to ensure program effectiveness in getting unemployed individuals back to work. As program interventions are being reviewed, the UI program and Workforce Services and Workforce Development will continue to assist workers to enable their quick and safe return to work. Efforts are underway in program design and future data systems updates to implement ongoing case management for RESEA through the introduction of a required second interview to assist UI claimants in their return-to-work efforts, increase the active labor pool, and address workforce shortages experienced by Alaska's employers.

Statutory and Regulatory Authority

Federal Authority:

5 USC Sec. 8501 – 8525	Unemployment Compensation for Federal and Military Employees
20 CFR Part 615	Extended Benefits in the Federal-State Unemployment Compensation Program
20 CFR Part 616	Interstate Arrangement for Combining Employment and Wages
26 USC Chapter 23	Federal Unemployment Tax Act
26 USC Chapter 25	General Provisions Relating to Employment Taxes
26 USC Chapter 65	Abatements, Credits, and Refunds
Social Security Act Title III	Grants to States for Unemployment Compensation Administration
Social Security Act Title IX	Miscellaneous Provisions Relating to Employment Security
Social Security Act Title XI	General Provisions, Peer Review, and Administrative Simplification
Social Security Act Title XII	Advances to State Unemployment Funds
Public Law 93 – 618	Trade Act of 1974
Public Law 103 – 152	Mandatory Profiling of UI Claimants
Public Law 107 – 147	Temporary Extended Unemployment Compensation Act of 2002
Public Law 107 – 210	Trade Adjustment Assistance Reform Act of 2002
Public Law 110 - 252	Supplemental Appropriations Act, 2008, Title IV, Emergency Unemployment Compensation
Public Law 110 – 328	SSI Extension for Elderly and Disabled Refugees Act of 2008
Public Law 110 - 449	Unemployment Compensation Extension Act of 2008
Public Law 111 - 5	Assistance for Unemployed Workers and Struggling Families Act
Public Law 111 - 205	Unemployment Compensation Extension Act of 2010
Public Law 111 - 157	Continuing Extension Act of 2010
Public Law 111 - 312	Tax Relief, Unemployment Insurance Reauthorization and Job Creation Act of 2010
Public Law 112-40	An act to extend the Generalized System of Preferences, and for other purposes
Title 20 CFR, Chapter V	Employment and Training Administration
Public Law 113 - 128	Workforce Innovation and Opportunity Act

Statutory Authority:

AS 23.20	Alaska Employment Security Act
AS 23.15.830	Alaska Technical and Vocational Education Program Account

Administrative Regulations:
8 AAC 85

Employment Security

Admin Order #275

The Division of Business Partnerships is dissolved. The Alaska Workforce Investment Board (AS 23.15.550), is organized as an entity under the Office of the Commissioner. The Employment Security Division and remaining functions of the Division of Business Partnerships are merged into a single division called the Division of Employment and Training Services.

Contact Information
<p>Contact: Patsy Westcott, Director Phone: (907) 465-4453 E-mail: patsy.westcott@alaska.gov</p>

Unemployment Insurance Personal Services Information				
Authorized Positions			Personal Services Costs	
	FY2023 Management Plan	FY2024 Governor		
Full-time	148	148	Annual Salaries	11,074,465
Part-time	26	26	COLA	320,257
Nonpermanent	3	3	Premium Pay	0
			Annual Benefits	7,509,056
			<i>Less 6.97% Vacancy Factor</i>	(1,317,500)
			Lump Sum Premium Pay	0
Totals	177	177	Total Personal Services	17,586,278

Position Classification Summary					
Job Class Title	Anchorage	Fairbanks	Juneau	Others	Total
Accounting Technician 1	0	0	2	0	2
Accounting Technician 2	2	0	7	0	9
Accounting Technician 3	0	0	2	0	2
Accounting Technician 4	1	0	1	0	2
Administrative Assistant 1	0	1	1	0	2
Administrative Assistant 2	1	0	1	0	2
Administrative Assistant 3	0	0	1	0	1
Appeals Officer 1	0	0	1	0	1
Appeals Officer 2	0	0	2	0	2
Appeals Officer 3	1	0	0	0	1
Asst Dir Emp Se	1	0	0	0	1
College Intern 2	1	0	1	0	2
Emp/Ui Tech Mgr	0	0	3	0	3
Employment Security Analyst 1	0	0	1	0	1
Employment Security Analyst 2	2	0	7	0	9
Employment Security Analyst 3	2	0	9	0	11
Field Auditor 1	4	2	3	2	11
Field Auditor 2	1	0	0	1	2
Investigator 2	4	1	3	0	8
Investigator 3	1	0	0	0	1
Office Assistant 1	0	0	1	0	1
Office Assistant 2	0	0	1	0	1
Publications Specialist 3	0	0	1	0	1
Spvr Ui Tax	0	0	1	0	1
Student Intern 2	0	0	1	0	1
Supervisor, Audit Operations	0	0	1	0	1
Ui Claim Mgr 1	0	1	0	0	1
Ui Claim Mgr 2	1	0	1	0	2
Ui Q/C Auditor	3	2	2	0	7
Ui Q/C Spvr	0	0	1	0	1
Ui Tech 1	27	2	37	0	66
Ui Tech 2	4	1	5	0	10
Ui Tech 3	4	1	6	0	11
Totals	60	11	103	3	177

Component Detail All Funds
Department of Labor and Workforce Development

Component: Unemployment Insurance (2276)
RDU: Employment and Training Services (646)

Non-Formula Component

	FY2022 Actuals	FY2023 Conference Committee	FY2023 Authorized	FY2023 Management Plan	FY2024 Governor	FY2023 Management Plan vs FY2024 Governor		
71000 Personal Services	19,378.4	17,872.2	17,872.2	17,063.9	17,586.3	522.4	3.1%	
72000 Travel	62.6	36.1	36.1	68.7	75.6	6.9	10.0%	
73000 Services	6,416.9	15,350.4	15,350.4	14,326.1	9,914.9	-4,411.2	-30.8%	
74000 Commodities	288.2	252.3	252.3	252.3	354.2	101.9	40.4%	
75000 Capital Outlay	0.0	7.5	7.5	7.5	0.0	-7.5	-100.0%	
77000 Grants, Benefits	250.0	0.0	0.0	0.0	548.0	548.0	100.0%	
78000 Miscellaneous	0.0	0.0	0.0	0.0	0.0	0.0	0.0%	
Totals	26,396.1	33,518.5	33,518.5	31,718.5	28,479.0	-3,239.5	-10.2%	
Fund Sources:								
1002 Fed Rcpts (Fed)	25,554.2	32,252.1	32,252.1	30,452.1	27,195.6	-3,256.5	-10.7%	
1005 GF/Prgm (DGF)	0.0	8.3	8.3	8.3	8.4	0.1	1.2%	
1007 I/A Rcpts (Other)	133.2	346.1	346.1	346.1	348.6	2.5	0.7%	
1054 Empl Trng (DGF)	347.7	446.0	446.0	446.0	453.2	7.2	1.6%	
1108 Stat Desig (Other)	13.3	20.0	20.0	20.0	20.0	0.0	0.0%	
1151 VoTech Ed (DGF)	347.7	446.0	446.0	446.0	453.2	7.2	1.6%	
Unrestricted General (UGF)	0.0	0.0	0.0	0.0	0.0	0.0	0.0%	
Designated General (DGF)	695.4	900.3	900.3	900.3	914.8	14.5	1.6%	
Other Funds	146.5	366.1	366.1	366.1	368.6	2.5	0.7%	
Federal Funds	25,554.2	32,252.1	32,252.1	30,452.1	27,195.6	-3,256.5	-10.7%	
Positions:								
Permanent Full Time	147	149	149	148	148	0	0.0%	
Permanent Part Time	28	26	26	26	26	0	0.0%	
Non Permanent	4	3	3	3	3	0	0.0%	

Change Record Detail - Multiple Scenarios with Descriptions
Department of Labor and Workforce Development

Component: Unemployment Insurance (2276)
RDU: Employment and Training Services (646)

Scenario/Change Record Title	Trans Type	Totals	Personal Services	Travel	Services	Commodities	Capital Outlay	Grants, Benefits	Miscellaneous	Positions		NP
										PFT	PPT	
***** Changes From FY2023 Conference Committee To FY2023 Authorized *****												
FY2023 Conference Committee												
	ConfCom	33,518.5	17,872.2	36.1	15,350.4	252.3	7.5	0.0	0.0	149	26	3
1002 Fed Rcpts		32,252.1										
1005 GF/Prgm		8.3										
1007 I/A Rcpts		346.1										
1054 Empl Trng		446.0										
1108 Stat Desig		20.0										
1151 VoTech Ed		446.0										
Subtotal		33,518.5	17,872.2	36.1	15,350.4	252.3	7.5	0.0	0.0	149	26	3
***** Changes From FY2023 Authorized To FY2023 Management Plan *****												
Align Authority with Anticipated Expenditures												
	LIT	0.0	-808.3	32.6	775.7	0.0	0.0	0.0	0.0	0	0	0
Transfer authority from personal services to travel and services to cover anticipated costs and to align travel authority with the FY2023 Travel Plan The remaining personal services authority is sufficient to meet anticipated expenditures.												
Transfer and Reclassify Unemployment Insurance Tech 1 (07-5011) from Unemployment Insurance to Workforce Development												
	Trout	0.0	0.0	0.0	0.0	0.0	0.0	0.0	0.0	-1	0	0
Transfer Unemployment Insurance Tech 1 (07-5011) from Unemployment Insurance to Workforce Development and reclassify as an Employment Services Technician 1 to assist with the workload associated with the Workforce Innovation and Opportunity Act (WIOA) Title I & Title III and the Workforce Opportunity Tax Credit (WOTC) programs. This transfer ensures accurate federal reporting and enables the division to provide increased service to WOTC applicants and customers, which provides an incentive to Alaskan employers to hire at-risk individuals.												
Transfer Federal Authority from Unemployment Insurance to Employment and Training Services Administration												
	Trout	-1,800.0	0.0	0.0	-1,800.0	0.0	0.0	0.0	0.0	0	0	0
1002 Fed Rcpts		-1,800.0										
Transfer available federal authority from Unemployment Insurance (UI) to Employment and Training Services Administration for information technology contracts that are managed by the Data Processing unit in support of the Unemployment Insurance program.												
The remaining federal authority in UI is sufficient to meet planned expenditures.												
Subtotal		31,718.5	17,063.9	68.7	14,326.1	252.3	7.5	0.0	0.0	148	26	3
***** Changes From FY2023 Management Plan To FY2024 Governor *****												
Transfer Authority for Anticipated Personal Services, Travel, and Commodities Costs												
	LIT	0.0	70.3	6.9	-165.6	95.9	-7.5	0.0	0.0	0	0	0

Change Record Detail - Multiple Scenarios with Descriptions
Department of Labor and Workforce Development

Component: Unemployment Insurance (2276)
RDU: Employment and Training Services (646)

Scenario/Change Record Title	Trans Type	Totals	Personal Services	Travel	Services	Commodities	Capital Outlay	Grants, Benefits	Miscellaneous	Positions		NP
										PFT	PPT	
Transfer authority to personal services, travel, and commodities from services and capital outlay to cover anticipated costs and align authority with projected FY2024 expenditures. The remaining authority is sufficient to meet anticipated expenditures.												
Reverse FY2023 Open Ended Federal Receipt Authority Associated with COVID-19												
	OTI	-10,000.0	0.0	0.0	-10,000.0	0.0	0.0	0.0	0.0	0	0	0
1002 Fed Rcpts		-10,000.0										
This transaction reverses one-time federal authority for COVID-related Unemployment Insurance benefit payments, associated administrative costs, and system maintenance.												
FY2024 PERS Rate Adjustment												
	SalAdj	32.1	32.1	0.0	0.0	0.0	0.0	0.0	0.0	0	0	0
1002 Fed Rcpts		30.7										
1007 I/A Rcpts		0.2										
1054 Empl Trng		0.6										
1151 VoTech Ed		0.6										
FY2024 PERS rate adjustment to 25.10%: \$32.1												
FY2024 Salary and Health Insurance Increases												
	SalAdj	350.3	350.3	0.0	0.0	0.0	0.0	0.0	0.0	0	0	0
1002 Fed Rcpts		334.7										
1005 GF/Prgm		0.1										
1007 I/A Rcpts		2.3										
1054 Empl Trng		6.6										
1151 VoTech Ed		6.6										
FY2024 Salary and Health Insurance Increases: \$350.3												
FY2024 GGU cost of living increase 2.5%: \$265.2												
FY2024 SU cost of living increase 1%: \$35.9												
FY2024 AlaskaCare insurance from \$1,685 to \$1,793 per member per month.: \$39.9												
FY2024 GGU health insurance increase from \$1,567.50 to \$1,573.50 per member per month.: \$9.3												
Programs and Operation of Disaster Unemployment Assistance Program												
	Inc	6,378.1	69.7	0.0	5,754.4	6.0	0.0	548.0	0.0	0	0	0
1002 Fed Rcpts		6,378.1										

Change Record Detail - Multiple Scenarios with Descriptions
Department of Labor and Workforce Development

Component: Unemployment Insurance (2276)
RDU: Employment and Training Services (646)

Scenario/Change Record Title	Trans Type	Totals	Personal Services	Travel	Services	Commodities	Capital Outlay	Grants, Benefits	Miscellaneous	Positions		
										PFT	PPT	NP
Increased federal receipt and expenditure authority is required to fully utilize ongoing available federal grant opportunities including: integrity and security updates related to the Coronavirus Aid, Relief, and Economic Security Act Pandemic Unemployment Insurance programs; American Rescue Plan - Fraud Detection and Prevention; the Federal Emergency Management Agency Disaster Unemployment Insurance Act program; and anticipated supplemental budget request opportunities for the upgrade of the Unemployment Insurance program's legacy mainframe system.												
	Totals	28,479.0	17,586.3	75.6	9,914.9	354.2	0.0	548.0	0.0	148	26	3

Line Item Detail (1676)
Department of Labor and Workforce Development
Travel

Component: Unemployment Insurance (2276)

Line Number	Line Name		FY2022 Actuals	FY2023 Management Plan	FY2024 Governor
2000	Travel		62.6	68.7	75.6
Object Class	Servicing Agency	Explanation	FY2022 Actuals	FY2023 Management Plan	FY2024 Governor
2000 Travel Detail Totals			62.6	68.7	75.6
2000	In-State Employee Travel	In-state employee travel to support the department's mission.	41.8	44.7	49.2
2002	Out of State Employee Travel	Out of state employee travel.	20.8	24.0	26.4

Line Item Detail (1676)
Department of Labor and Workforce Development
Services

Component: Unemployment Insurance (2276)

Line Number	Line Name		FY2022 Actuals	FY2023 Management Plan	FY2024 Governor
3000	Services		6,416.9	14,326.1	9,914.9
Object Class	Servicing Agency	Explanation	FY2022 Actuals	FY2023 Management Plan	FY2024 Governor
3000 Services Detail Totals			6,416.9	14,326.1	9,914.9
3000	Education Services	Training, education, and memberships.	31.0	33.0	35.0
3001	Financial Services	Financial services, including auditing and accounting, consulting, insurance, or interest expense.	8.9	120.0	120.0
3002	Legal and Judicial Services	Custody care, attorney fees, expert and non-expert witnesses, mediation services, transcription and recording services, case costs, and settlement fees.	21.3	32.0	36.0
3003	Information Technology	Information technology, including training, consulting, leases, and software licensing and maintenance.	1,376.7	9,477.6	5,184.5
3004	Telecommunications	Local, long distance, and cellular telephone charges, television, data/network, telecommunication equipment, and other wireless charges from outside vendors.	119.5	131.4	144.5
3006	Delivery Services	Freight, courier services, and postage.	11.5	12.2	13.4
3007	Advertising and Promotions	Advertising for regulation changes, board meetings, recruitments, or other public notices.	0.6	2.0	2.0
3008	Utilities	Electricity, heating fuel, water, sewage, recycling, heating fuel, trash, and confidential document and other disposal services.	14.6	16.0	17.7

Line Item Detail (1676)
Department of Labor and Workforce Development
Services

Component: Unemployment Insurance (2276)

Object Class	Servicing Agency	Explanation	FY2022 Actuals	FY2023 Management Plan	FY2024 Governor
3000 Services Detail Totals			6,416.9	14,326.1	9,914.9
3009	Structure/Infrastructure/Land	Room rental for training and seminar space, board or council meetings, or storage and archiving needs.	175.3	120.0	120.0
3010	Equipment/Machinery	Machinery, furniture, and equipment purchase, repairs, maintenance, rentals, and leases.	31.6	79.6	79.6
3011	Other Services	Other services, including interpreters; consulting; print, copy, and graphic services; and safety services.	79.6	218.8	218.8
3012	Inter-Agency Federal Indirect Rate Allocation	Labor - DETS Administration (3116) Indirect cost allocation for division purchasing, federal accounting reports, contracts, fiscal, and mail services provided by the Employment and Training Services Administration component.	21.3	23.4	23.4
3012	Inter-Agency Federal Indirect Rate Allocation	Labor - Management Services (335) Indirect cost allocation for departmental purchasing, accounting, reports, personnel consultation and other services provided by Management Services.	40.8	45.0	49.5
3013	Inter-Agency Data Processing Operations Allocation	Labor - Management Services (335) Allocation for Data Processing network and support services.	110.4	131.3	144.4
3016	Inter-Agency Economic Development	H&SS - Department-wide Reimbursable services agreement with Department of Health and Social Services for death certificates.	3.9	5.0	5.0
3016	Inter-Agency Economic Development	Labor - DETS Administration (3116) Data Processing costs associated with Secure Access Management.	21.5	32.0	36.0
3016	Inter-Agency Economic Development	Labor - Labor Market Information (336) Reimbursable services agreement with Labor Market Information for unemployment insurance actuarial research and related reports.	247.8	250.0	250.0
3016	Inter-Agency Economic	Labor - Workforce Services (2761) Reimbursable services agreement	300.5	320.0	340.0

Line Item Detail (1676)
Department of Labor and Workforce Development
Services

Component: Unemployment Insurance (2276)

Object Class	Servicing Agency	Explanation	FY2022 Actuals	FY2023 Management Plan	FY2024 Governor
3000 Services Detail Totals			6,416.9	14,326.1	9,914.9
Development		with Workforce Services for re-employment services provided to UI claimants.			
3016 Inter-Agency Economic Development	Labor - Labor Market Information (336)	Reimbursable services agreement with Labor Market Information for profiling services.	62.7	80.0	80.0
3017 Inter-Agency Information Technology Non-Telecommunications	Admin - Department-wide	Reimbursable services agreement with the Office of Information Technology rate for non-telecommunications support, including software and computer services.	489.9	560.8	616.9
3018 Inter-Agency Information Technology Telecommunications	Admin - Department-wide	Reimbursable services agreement with the Office of Information Technology for telecommunication support.	61.5	64.6	71.0
3019 Inter-Agency Storage	Labor - Management Services (335)	Moving, surplus, and storage expenses.	0.6	1.0	1.0
3021 Inter-Agency Mail	Admin - Department-wide	Reimbursable services agreement with Shared Services of Alaska for central mailroom support and services.	929.9	810.7	891.8
3022 Inter-Agency Human Resources	Admin - Department-wide	Reimbursable services agreement with the Division of Personnel and Labor Relations for human resources and personnel services.	111.1	125.8	138.4
3023 Inter-Agency Building Leases	Admin - Department-wide	State-owned facility space rent or other property leases.	767.5	844.2	886.4
3023 Inter-Agency Building Leases	Trans - Department-wide	State-owned facility space rent or other property leases.	68.3	75.1	82.7
3024 Inter-Agency Legal	Law - Department-wide	Reimbursable services agreement with the Department of Law for legal services.	54.0	80.0	80.0

Line Item Detail (1676)
Department of Labor and Workforce Development
Services

Component: Unemployment Insurance (2276)

Object Class		Servicing Agency	Explanation	FY2022 Actuals	FY2023 Management Plan	FY2024 Governor
3000 Services Detail Totals				6,416.9	14,326.1	9,914.9
3025	Inter-Agency Auditing	Admin - Department-wide	Reimbursable services agreement with the Department of Administration for auditing services, including federal compliance audits.	0.0	7.0	7.7
3026	Inter-Agency Insurance	Admin - Department-wide	Reimbursable services agreement with the Division of Risk Management for risk management insurance charges for leased buildings, repossessed properties, public official bonds, and overhead.	17.1	18.0	19.7
3027	Inter-Agency Financial	Admin - Department-wide	Reimbursable services agreement with the Division of Finance for system services for State accounting and payroll (IRIS), and reporting (ALDER) systems.	24.6	70.1	77.1
3027	Inter-Agency Financial	Admin - Department-wide	Reimbursable services agreement with Shared Services of Alaska for travel and accounts payable services.	7.1	9.8	10.7
3029	Inter-Agency Education/Training	Labor - DETS Administration (3116)	Data Processing costs associated with TVEP & STEP tax collection efforts.	63.2	70.0	70.0
3030	Inter-Agency Hearing/Mediation	Admin - Department-wide	Reimbursable services agreement with Department of Administration for hearing and mediation services.	414.3	220.0	40.0
3030	Inter-Agency Hearing/Mediation	Admin - Department-wide	Reimbursable services agreement with the Department of Administration for hearing and mediation services related to CARES Act Pandemic Unemployment Assistance.	710.4	220.0	0.0
3037	State Equipment Fleet	Trans - Department-wide	State equipment fleet fixed cost services for equipment replacement, maintenance and fuel, both allowable	17.9	19.7	21.7

Line Item Detail (1676)
Department of Labor and Workforce Development
Services

Component: Unemployment Insurance (2276)

Object Class	Servicing Agency	Explanation	FY2022 Actuals	FY2023 Management Plan	FY2024 Governor
3000 Services Detail Totals			6,416.9	14,326.1	9,914.9
and non-allowable.					

Line Item Detail (1676)
Department of Labor and Workforce Development
Commodities

Component: Unemployment Insurance (2276)

Line Number	Line Name		FY2022 Actuals	FY2023 Management Plan	FY2024 Governor
4000	Commodities		288.2	252.3	354.2
Object Class	Servicing Agency	Explanation	FY2022 Actuals	FY2023 Management Plan	FY2024 Governor
4000 Commodities Detail Totals			288.2	252.3	354.2
4000	Business	General business supplies such as office consumables and computer equipment.	279.5	242.3	344.2
4002	Household/Institutional	Office supplies, supplies and consumables for public meetings, and cleaning products.	8.7	10.0	10.0

Line Item Detail (1676)
Department of Labor and Workforce Development
Capital Outlay

Component: Unemployment Insurance (2276)

Line Number	Line Name		FY2022 Actuals	FY2023 Management Plan	FY2024 Governor
5000	Capital Outlay		0.0	7.5	0.0
Object Class	Servicing Agency	Explanation	FY2022 Actuals	FY2023 Management Plan	FY2024 Governor
5000 Capital Outlay Detail Totals			0.0	7.5	0.0
5004	Equipment	Office equipment.	0.0	7.5	0.0

Line Item Detail (1676)
Department of Labor and Workforce Development
Grants, Benefits

Component: Unemployment Insurance (2276)

Line Number	Line Name		FY2022 Actuals	FY2023 Management Plan	FY2024 Governor
7000	Grants, Benefits		250.0	0.0	548.0
Object Class	Servicing Agency	Explanation	FY2022 Actuals	FY2023 Management Plan	FY2024 Governor
7000 Grants, Benefits Detail Totals			250.0	0.0	548.0
7002	Benefits	Benefit payments for claims appealed under the Federal Emergency Management Agency's (FEMA) State of Alaska for Other Needs Assistance (ONA) supplemental payments for lost wages. FEMA-DR-4533-AK	250.0	0.0	0.0
7002	Benefits	Benefit payments for benefit claims under the Federal Emergency Management Agency's (FEMA) Disaster Unemployment Assistance (DUA) program.	0.0	0.0	548.0

Revenue Detail (1681)
Department of Labor and Workforce Development

Component: Unemployment Insurance (2276)

Revenue Type (OMB Fund Code) Revenue Source	Component	Comment	FY2022 Actuals	FY2023 Management Plan	FY2024 Governor
5002 Fed Rcpts (1002 Fed Rcpts)			25,554.2	30,452.1	27,195.6
5007 Federal Health and Human Services - Miscellaneous Grants		U.S. Department of Labor grant to support Unemployment Insurance program administration.	22,433.7	23,053.4	22,928.6
5007 Federal Health and Human Services - Miscellaneous Grants		U.S. Department of Labor grants related to the CARES Act to support Unemployment Insurance program administration.	2,809.2	4,968.1	1,807.8
5007 Federal Health and Human Services - Miscellaneous Grants		Reemployment Services & Eligibility Assessment (RESEA) program administration.	311.3	572.4	601.0
5007 Federal Health and Human Services - Miscellaneous Grants		American Rescue Plan (ARPA) - Fraud Detection and Prevention program administration.	0.0	1,228.0	1,228.0
5007 Federal Health and Human Services - Miscellaneous Grants		Federal Emergency Management Agency's (FEMA) State of Alaska for Disaster Unemployment Assistance (DUA) supplemental payments and administration.	0.0	630.2	630.2
5005 GF/Prgm (1005 GF/Prgm)			0.2	8.3	8.4
5108 Program Receipts General Government - Charges for Services		Collections from non-state entities for the release of information.	0.2	8.3	8.4
5007 I/A Rcpts (1007 I/A Rcpts)			133.2	346.1	348.6
5301 Inter-Agency Receipts		Inter-agency receipts for service agreements not yet finalized	3.5	76.9	79.4
5301 Inter-Agency Receipts	Admin - Department-wide	Reimbursable services agreement with Department of Administration for Secure Access Management.	1.2	2.8	2.8
5301 Inter-Agency Receipts	Commerce - Department-wide	Reimbursable services agreement with Department of Commerce & Community Development for Secure Access Management.	1.0	1.0	1.0
5301 Inter-Agency Receipts	E&ED - Department-wide	Reimbursable services agreement with Department of Education for	1.2	3.8	3.8

Revenue Detail (1681)
Department of Labor and Workforce Development

Component: Unemployment Insurance (2276)

Revenue Type (OMB Fund Code) Revenue Source	Component	Comment	FY2022 Actuals	FY2023 Management Plan	FY2024 Governor
5301 Inter-Agency Receipts	H&SS - Department-wide	Secure Access Management. Reimbursable services agreements with Department of Health and Social Services for Secure Access Management.	25.5	46.2	46.2
5301 Inter-Agency Receipts	Labor - Labor Market Information (336)	Reimbursable services agreement with Labor Market Information for Secure Access Management.	2.0	3.5	3.5
5301 Inter-Agency Receipts	Labor - Workers' Compensation (344)	Reimbursable services agreement with Workers' Compensation for Secure Access Management.	3.2	5.9	5.9
5301 Inter-Agency Receipts	Labor - Workforce Development (3117)	Reimbursable services agreement with Workforce Development for Secure Access Management.	3.4	5.2	5.2
5301 Inter-Agency Receipts	Labor - Workforce Services (2761)	Reimbursable service agreement with Workforce Services for release of confidential information.	56.0	77.8	77.8
5301 Inter-Agency Receipts	Law - Department-wide	Reimbursable services agreement with Department of Law for Secure Access Management.	3.2	5.2	5.2
5301 Inter-Agency Receipts	Rev - Department-wide	Reimbursable services agreement with Department of Revenue for Secure Access Management.	13.8	24.7	24.7
5301 Inter-Agency Receipts	Labor - Workforce Development (3117)	Reimbursable service agreement with Workforce Development for Workforce Innovation and Opportunity Act Rapid Response.	0.6	5.0	5.0
5301 Inter-Agency Receipts	Labor - Workforce Services (2761)	Reimbursable services agreement with Workforce Services for Secure Access Management.	6.0	11.1	11.1
5301 Inter-Agency Receipts	Rev - Department-wide	Reimbursable services agreement with Department of Revenue Child Support program for cross match with program records.	12.6	77.0	77.0
5108 Stat Desig (1108 Stat Desig)			13.3	20.0	20.0
5206 Statutory Designated Program		Collections from non-state entities	13.3	20.0	20.0

Revenue Detail (1681)
Department of Labor and Workforce Development

Component: Unemployment Insurance (2276)

Revenue Type (OMB Fund Code) Revenue Source	Component	Comment	FY2022 Actuals	FY2023 Management Plan	FY2024 Governor
Receipts - Contracts		for Secure Access Management.			
6054 Empl Trng (1054 Empl Trng)			347.7	446.0	453.2
6560 State Training and Employment Program - Contributions		State Training and Employment Program (AS 23.15.620) provides funds for grants to employment and training entities for services to Alaskans.	347.7	446.0	453.2
6151 VoTech Ed (1151 VoTech Ed)			347.7	446.0	453.2
6775 Technical Vocational Education Program - Contributions		Technical and Vocational Education Program Account (AS 23.15.830) provides funds to support technical and vocational training programs across Alaska.	347.7	446.0	453.2

Inter-Agency Services (1682)
Department of Labor and Workforce Development

Component: Unemployment Insurance (2276)

				FY2022 Actuals	FY2023 Management Plan	FY2024 Governor
Component Totals				4,546.3	4,083.5	3,943.4
With Department of Labor and Workforce Development				868.8	952.7	994.3
With Department of Health & Social Services				3.9	5.0	5.0
With Department of Administration				3,533.4	2,951.0	2,759.7
With Department of Transportation/Public Facilities				86.2	94.8	104.4
With Department of Law				54.0	80.0	80.0
Object Class	Servicing Agency	Explanation		FY2022 Actuals	FY2023 Management Plan	FY2024 Governor
3012	Inter-Agency Federal Indirect Rate Allocation	Labor - DETS Administration (3116)	Indirect cost allocation for division purchasing, federal accounting reports, contracts, fiscal, and mail services provided by the Employment and Training Services Administration component.	21.3	23.4	23.4
3012	Inter-Agency Federal Indirect Rate Allocation	Labor - Management Services (335)	Indirect cost allocation for departmental purchasing, accounting, reports, personnel consultation and other services provided by Management Services.	40.8	45.0	49.5
3013	Inter-Agency Data Processing Operations Allocation	Labor - Management Services (335)	Allocation for Data Processing network and support services.	110.4	131.3	144.4
3016	Inter-Agency Economic Development	H&SS - Department-wide	Reimbursable services agreement with Department of Health and Social Services for death certificates.	3.9	5.0	5.0
3016	Inter-Agency Economic Development	Labor - DETS Administration (3116)	Data Processing costs associated with Secure Access Management.	21.5	32.0	36.0
3016	Inter-Agency Economic Development	Labor - Labor Market Information (336)	Reimbursable services agreement with Labor Market Information for unemployment insurance actuarial research and related reports.	247.8	250.0	250.0
3016	Inter-Agency Economic	Labor - Workforce Services (2761)	Reimbursable services agreement	300.5	320.0	340.0
FY2024 Governor				Released December 15, 2022		
Department of Labor and Workforce Development				Page 22		

Inter-Agency Services (1682)
Department of Labor and Workforce Development

Component: Unemployment Insurance (2276)

Object Class	Servicing Agency	Explanation	FY2022 Actuals	FY2023 Management Plan	FY2024 Governor
Development		with Workforce Services for re-employment services provided to UI claimants.			
3016 Inter-Agency Economic Development	Labor - Labor Market Information (336)	Reimbursable services agreement with Labor Market Information for profiling services.	62.7	80.0	80.0
3017 Inter-Agency Information Technology Non-Telecommunications	Admin - Department-wide	Reimbursable services agreement with the Office of Information Technology rate for non-telecommunications support, including software and computer services.	489.9	560.8	616.9
3018 Inter-Agency Information Technology Telecommunications	Admin - Department-wide	Reimbursable services agreement with the Office of Information Technology for telecommunication support.	61.5	64.6	71.0
3019 Inter-Agency Storage	Labor - Management Services (335)	Moving, surplus, and storage expenses.	0.6	1.0	1.0
3021 Inter-Agency Mail	Admin - Department-wide	Reimbursable services agreement with Shared Services of Alaska for central mailroom support and services.	929.9	810.7	891.8
3022 Inter-Agency Human Resources	Admin - Department-wide	Reimbursable services agreement with the Division of Personnel and Labor Relations for human resources and personnel services.	111.1	125.8	138.4
3023 Inter-Agency Building Leases	Admin - Department-wide	State-owned facility space rent or other property leases.	767.5	844.2	886.4
3023 Inter-Agency Building Leases	Trans - Department-wide	State-owned facility space rent or other property leases.	68.3	75.1	82.7
3024 Inter-Agency Legal	Law - Department-wide	Reimbursable services agreement with the Department of Law for legal services.	54.0	80.0	80.0
3025 Inter-Agency Auditing	Admin - Department-wide	Reimbursable services agreement with the Department of Administration for auditing services,	0.0	7.0	7.7

Inter-Agency Services (1682)
Department of Labor and Workforce Development

Component: Unemployment Insurance (2276)

Object Class		Servicing Agency	Explanation	FY2022 Actuals	FY2023 Management Plan	FY2024 Governor
3026	Inter-Agency Insurance	Admin - Department-wide	including federal compliance audits. Reimbursable services agreement with the Division of Risk Management for risk management insurance charges for leased buildings, repossessed properties, public official bonds, and overhead.	17.1	18.0	19.7
3027	Inter-Agency Financial	Admin - Department-wide	Reimbursable services agreement with the Division of Finance for system services for State accounting and payroll (IRIS), and reporting (ALDER) systems.	24.6	70.1	77.1
3027	Inter-Agency Financial	Admin - Department-wide	Reimbursable services agreement with Shared Services of Alaska for travel and accounts payable services.	7.1	9.8	10.7
3029	Inter-Agency Education/Training	Labor - DETS Administration (3116)	Data Processing costs associated with TVEP & STEP tax collection efforts.	63.2	70.0	70.0
3030	Inter-Agency Hearing/Mediation	Admin - Department-wide	Reimbursable services agreement with Department of Administration for hearing and mediation services.	414.3	220.0	40.0
3030	Inter-Agency Hearing/Mediation	Admin - Department-wide	Reimbursable services agreement with the Department of Administration for hearing and mediation services related to CARES Act Pandemic Unemployment Assistance.	710.4	220.0	0.0
3037	State Equipment Fleet	Trans - Department-wide	State equipment fleet fixed cost services for equipment replacement, maintenance and fuel, both allowable and non-allowable.	17.9	19.7	21.7

Personal Services Expenditure Detail
Department of Labor and Workforce Development

Scenario: FY2024 Governor (19867)
Component: Unemployment Insurance (2276)
RDU: Employment and Training Services (646)

PCN	Job Class Title	Time Status	Retire Code	Barg Unit	Location	Salary Sched	Range / Step	Comp Months	Split / Count	Annual Salaries	COLA	Premium Pay	Annual Benefits	Total Costs	UGF Amount
07-4100	Investigator 2	FT	A	GP	Anchorage	200	16P	12.0		83,831	2,888	0	50,678	137,397	0
07-4101	Investigator 2	FT	A	GP	Anchorage	200	16N / O	12.0		80,666	2,779	0	49,482	132,927	0
07-4103	Office Assistant 1	FT	A	GP	Juneau	205	8B / C	12.0		35,656	1,228	0	32,473	69,357	0
07-4515	Investigator 2	FT	A	GP	Juneau	205	16A / B	12.0		57,603	1,984	0	40,767	100,354	0
07-4516	Investigator 2	FT	A	GP	Fairbanks	203	16D / E	12.0		63,487	2,187	0	42,990	108,664	0
07-5005	Spvr Ui Tax	FT	A	SS	Juneau	205	23B / C	12.0		101,314	1,396	0	59,959	162,669	0
07-5006	Administrative Assistant 3	FT	A	GP	Juneau	99	15O / P	12.0		81,771	2,817	0	49,900	134,488	0
07-5007	Investigator 2	FT	A	GP	Juneau	205	16B / C	12.0		60,043	2,068	0	41,689	103,800	0
07-5008	Ui Tech 3	FT	A	SS	Juneau	205	16J / K	12.0		76,558	1,055	0	50,604	128,217	0
07-5012	Accounting Technician 3	FT	A	SS	Juneau	605	16B / C	12.0		62,912	867	0	45,447	109,226	0
07-5014	Ui Tech 1	PT	A	GP	Juneau	205	14C / D	11.0		49,189	1,694	0	36,004	86,887	0
07-5017	Accounting Technician 3	FT	A	GG	Juneau	205	16A / B	12.0		57,603	1,984	0	40,767	100,354	0
07-5018	Supervisor, Audit Operations	FT	A	SS	Juneau	205	19A / B	12.0		75,930	1,046	0	50,367	127,343	0
07-5022	Accounting Technician 4	FT	A	SS	Anchorage	99	18P / Q	12.0		96,762	1,333	0	58,239	156,334	0
07-5026	Field Auditor 1	FT	A	GP	Fairbanks	203	16B / C	12.0		58,039	1,999	0	40,932	100,970	0
07-5027	Field Auditor 1	FT	A	GP	Anchorage	200	16B / C	12.0		56,869	1,959	0	40,489	99,317	0
07-5028	Field Auditor 1	FT	A	GP	Anchorage	200	16A / B	12.0		54,863	1,890	0	39,731	96,484	0
07-5035	Office Assistant 2	FT	A	GP	Juneau	205	10A / B	12.0		39,585	1,364	0	33,958	74,907	0
07-5037	Ui Tech 1	FT	A	GP	Juneau	205	14A / B	12.0		50,076	1,725	0	37,922	89,723	0
07-5039	Employment Security Analyst 2	FT	A	GP	Juneau	205	17D / E	12.0		67,643	2,330	0	44,561	114,534	0
07-5042	Investigator 3	FT	A	SS	Anchorage	99	18P / Q	12.0		95,805	1,320	0	57,877	155,002	0
07-5045	Accounting Technician 2	FT	A	GP	Juneau	205	14J	12.0		63,102	2,174	0	42,845	108,121	0
07-5046	Accounting Technician 1	FT	A	GP	Juneau	205	12A / B	12.0		43,992	1,515	0	35,623	81,130	0
07-5051	Ui Tech 1	PT	A	GP	Anchorage	200	14B / C	11.0		45,083	1,553	0	34,452	81,088	0
07-5055	Accounting Technician 4	FT	A	SS	Juneau	205	18M	12.0		93,912	1,294	0	57,162	152,368	0
07-5060	Ui Tech 3	FT	A	SS	Juneau	205	16A / B	12.0		61,693	850	0	44,986	107,529	0
07-5114	Ui Claim Mgr 2	FT	A	SS	Anchorage	99	20O / P	12.0		121,069	1,668	0	67,425	190,162	0
07-5117	Ui Tech 2	FT	A	GP	Anchorage	200	15A / B	12.0		51,071	1,759	0	38,298	91,128	0
07-5121	Ui Tech 2	FT	A	GP	Anchorage	200	15J / K	12.0		65,655	2,262	0	43,810	111,727	0
07-5124	Ui Tech 1	PT	A	GP	Fairbanks	203	14C / D	11.0		47,623	1,640	0	35,412	84,675	0
07-5128	Administrative Assistant 2	FT	A	GP	Anchorage	200	14B / C	12.0		49,261	1,697	0	37,614	88,572	0
07-5138	Ui Tech 1	FT	A	GP	Juneau	205	14A / B	12.0		50,076	1,725	0	37,922	89,723	0
07-5141	Ui Tech 1	FT	A	GP	Anchorage	200	14D / E	12.0		52,331	1,803	0	38,775	92,909	0
07-5145	Ui Tech 2	FT	A	GP	Anchorage	200	15K	12.0		66,690	2,297	0	44,201	113,188	0
07-5150	Investigator 2	FT	A	GP	Anchorage	200	16A / B	12.0		54,863	1,890	0	39,731	96,484	0
07-5159	Employment Security Analyst 3	FT	A	GP	Juneau	205	18K	12.0		85,761	2,954	0	51,408	140,123	0

Note: If a position is split, an asterisk (*) will appear in the Split/Count column. If the split position is also counted in the component, two asterisks (**) will appear in this column. [No valid job title] appearing in the Job Class Title indicates that the PCN has an invalid class code or invalid range for the class code effective date of this scenario.

Personal Services Expenditure Detail
Department of Labor and Workforce Development

Scenario: FY2024 Governor (19867)
Component: Unemployment Insurance (2276)
RDU: Employment and Training Services (646)

PCN	Job Class Title	Time Status	Retire Code	Barg Unit	Location	Salary Sched	Range / Step	Comp Months	Split / Count	Annual Salaries	COLA	Premium Pay	Annual Benefits	Total Costs	UGF Amount
07-5163	Ui Claim Mgr 1	FT	A	SS	Fairbanks	203	16C / D	12.0		65,939	909	0	46,591	113,439	0
07-5173	Ui Q/C Auditor	FT	A	GP	Juneau	205	15D / E	12.0		59,287	2,042	0	41,403	102,732	0
07-5189	Appeals Officer 3	FT	A	SS	Anchorage	200	21D / E	12.0		91,283	1,258	0	56,168	148,709	0
07-5201	Accounting Technician 2	FT	A	GP	Juneau	205	14B / C	12.0		51,985	1,791	0	38,644	92,420	0
07-5210	Ui Tech 3	FT	A	SS	Juneau	205	16D / E	12.0		69,354	956	0	47,881	118,191	0
07-5215	Ui Tech 3	FT	A	SS	Anchorage	200	16N / O	12.0		81,753	1,126	0	52,567	135,446	0
07-5223	Ui Tech 1	FT	A	GP	Juneau	205	14A / B	12.0		50,076	1,725	0	37,922	89,723	0
07-5233	Field Auditor 2	FT	A	GP	Kenai	200	17K / L	12.0		77,519	2,670	0	48,293	128,482	0
07-5248	Field Auditor 1	FT	A	GP	Juneau	205	16A / B	12.0		57,603	1,984	0	40,767	100,354	0
07-5249	Accounting Technician 2	FT	A	GP	Juneau	205	14A / B	12.0		50,076	1,725	0	37,922	89,723	0
07-5253	Employment Security Analyst 1	FT	A	GP	Juneau	205	15A / B	12.0		53,950	1,858	0	39,386	95,194	0
07-5274	Accounting Technician 2	FT	A	GP	Anchorage	200	14A / B	12.0		48,057	1,655	0	37,159	86,871	0
07-5284	Ui Tech 1	FT	A	GP	Juneau	205	14F / G	12.0		59,917	2,064	0	41,641	103,622	0
07-5297	Ui Tech 1	PT	A	GP	Anchorage	200	14D	11.0		47,673	1,642	0	35,431	84,746	0
07-5302	Ui Tech 1	FT	A	GP	Anchorage	200	14A / B	12.0		47,697	1,643	0	37,023	86,363	0
07-5313	Ui Tech 3	FT	A	SS	Anchorage	200	16L	12.0		75,691	1,043	0	50,276	127,010	0
07-5314	Employment Security Analyst 2	FT	A	GP	Juneau	205	17G	12.0		74,568	2,569	0	47,178	124,315	0
07-5317	Ui Tech 1	FT	A	GP	Juneau	205	14D / E	12.0		54,974	1,894	0	39,773	96,641	0
07-5337	Ui Tech 1	FT	A	GP	Anchorage	200	14G	12.0		57,662	1,986	0	40,789	100,437	0
07-5351	Asst Dir Emp Se	FT	A	SS	Anchorage	200	22M / N	12.0		125,050	1,723	0	68,929	195,702	0
07-5375	Ui Tech 3	FT	A	SS	Anchorage	200	16A / B	12.0		58,750	810	0	43,874	103,434	0
07-5418	Field Auditor 1	FT	A	GP	Juneau	205	16A / B	12.0		57,954	1,996	0	40,899	100,849	0
07-5420	Ui Tech 1	FT	A	GP	Juneau	205	14K / L	12.0		67,080	2,311	0	44,348	113,739	0
07-5449	Employment Security Analyst 3	FT	A	SS	Anchorage	200	18E / F	12.0		77,888	1,073	0	51,106	130,067	0
07-5457	Accounting Technician 2	FT	A	GP	Juneau	205	14L	12.0		67,256	2,317	0	44,415	113,988	0
07-5464	Field Auditor 1	FT	A	GP	Wasilla	200	16F / G	12.0		65,813	2,267	0	43,869	111,949	0
07-5469	Ui Tech 3	FT	A	SS	Juneau	205	16A / B	12.0		62,265	858	0	45,203	108,326	0
07-5477	Ui Tech 2	FT	A	GP	Juneau	205	15A / B	12.0		53,625	1,847	0	39,264	94,736	0
07-5478	Ui Tech 1	FT	A	GP	Anchorage	200	14A / B	12.0		47,830	1,648	0	37,074	86,552	0
07-5480	Employment Security Analyst 2	FT	A	GP	Anchorage	200	17L	12.0		78,819	2,715	0	48,784	130,318	0
07-5482	Emp/Ui Tech Mgr	FT	A	SS	Juneau	205	20A / B	12.0		81,373	1,121	0	52,423	134,917	0
07-5502	Emp/Ui Tech Mgr	FT	A	SS	Juneau	99	20N / O	12.0		113,239	1,560	0	64,466	179,265	0
07-5515	Ui Tech 1	FT	A	GP	Anchorage	200	14B / C	12.0		49,507	1,705	0	37,707	88,919	0
07-5519	Ui Tech 1	FT	A	GP	Anchorage	200	14C / D	12.0		50,369	1,735	0	38,033	90,137	0
07-5539	Field Auditor 1	FT	A	GP	Fairbanks	203	16B / C	12.0		58,841	2,027	0	41,235	102,103	0

Note: If a position is split, an asterisk (*) will appear in the Split/Count column. If the split position is also counted in the component, two asterisks (**) will appear in this column. [No valid job title] appearing in the Job Class Title indicates that the PCN has an invalid class code or invalid range for the class code effective date of this scenario.

Personal Services Expenditure Detail
Department of Labor and Workforce Development

Scenario: FY2024 Governor (19867)
Component: Unemployment Insurance (2276)
RDU: Employment and Training Services (646)

PCN	Job Class Title	Time Status	Retire Code	Barg Unit	Location	Salary Sched	Range / Step	Comp Months	Split / Count	Annual Salaries	COLA	Premium Pay	Annual Benefits	Total Costs	UGF Amount
07-5540	Field Auditor 1	FT	A	GP	Anchorage	200	16L / M	12.0		75,567	2,603	0	47,555	125,725	0
07-5543	Ui Tech 1	FT	A	GP	Juneau	205	14C / D	12.0		53,495	1,843	0	39,214	94,552	0
07-5555	Accounting Technician 2	FT	A	GP	Anchorage	200	14A / B	12.0		47,777	1,646	0	37,054	86,477	0
07-5557	Employment Security Analyst 3	FT	A	SS	Anchorage	200	18F / J	12.0		81,162	1,118	0	52,344	134,624	0
07-5560	Publications Specialist 3	FT	A	GP	Juneau	205	19L / M	12.0		94,871	3,268	0	54,850	152,989	0
07-5561	Ui Tech 2	FT	A	GP	Juneau	205	15D / E	12.0		60,106	2,071	0	41,713	103,890	0
07-5562	Ui Tech 3	FT	A	SS	Juneau	205	16L	12.0		79,477	1,095	0	51,707	132,279	0
07-5570	Ui Q/C Auditor	FT	A	GP	Anchorage	200	15N / O	12.0		74,092	2,552	0	46,998	123,642	0
07-5586	Ui Tech 1	FT	A	GP	Juneau	205	14A / B	12.0		50,076	1,725	0	37,922	89,723	0
07-5589	Ui Tech 1	PT	A	GP	Anchorage	200	14A / B	11.0		43,869	1,511	0	33,994	79,374	0
07-5590	Accounting Technician 2	FT	A	GP	Juneau	205	14L / M	12.0		67,806	2,336	0	44,623	114,765	0
07-5599	Ui Tech 1	FT	A	GP	Anchorage	200	14K	12.0		62,049	2,137	0	42,447	106,633	0
07-5601	Ui Tech 1	FT	A	GP	Anchorage	200	14A / B	12.0		47,697	1,643	0	37,023	86,363	0
07-5606	Ui Tech 1	PT	A	GP	Anchorage	100	14B / C	11.0		45,488	1,567	0	34,605	81,660	0
07-5607	Ui Tech 1	FT	A	GP	Anchorage	200	14K / L	12.0		63,890	2,201	0	43,143	109,234	0
07-5614	Ui Q/C Auditor	FT	A	GP	Anchorage	200	15G / J	12.0		64,500	2,222	0	43,373	110,095	0
07-5622	Accounting Technician 2	FT	A	GP	Juneau	205	14B / C	12.0		51,392	1,770	0	38,420	91,582	0
07-5624	Administrative Assistant 2	FT	A	GP	Juneau	205	14K / L	12.0		66,624	2,295	0	44,176	113,095	0
07-5626	Ui Q/C Auditor	FT	A	GP	Fairbanks	203	15A / B	12.0		52,762	1,818	0	38,937	93,517	0
07-5643	Ui Tech 1	PT	A	GP	Anchorage	200	14B / C	11.0		45,083	1,553	0	34,452	81,088	0
07-5654	Employment Security Analyst 3	FT	A	GP	Juneau	205	18C / D	12.0		70,214	2,419	0	45,533	118,166	0
07-5659	Employment Security Analyst 3	FT	A	GP	Juneau	205	18F / G	12.0		78,759	2,713	0	48,762	130,234	0
07-5660	Ui Tech 1	FT	A	GP	Anchorage	200	14D / E	12.0		53,319	1,837	0	39,148	94,304	0
07-5665	Ui Tech 1	FT	A	GP	Juneau	205	14A / B	12.0		50,356	1,735	0	38,028	90,119	0
07-5666	Ui Tech 1	FT	A	GP	Juneau	205	14L	12.0		67,256	2,317	0	44,415	113,988	0
07-5672	Ui Q/C Spvr	FT	A	SS	Juneau	205	19B / C	12.0		77,606	1,069	0	51,000	129,675	0
07-5678	Ui Tech 1	FT	A	GP	Anchorage	200	14D / E	12.0		52,331	1,803	0	38,775	92,909	0
07-5680	Field Auditor 1	FT	A	GP	Wasilla	200	16B / C	12.0		56,750	1,955	0	40,444	99,149	0
07-5681	Field Auditor 2	FT	A	SS	Anchorage	200	17A / B	12.0		63,224	871	0	45,565	109,660	0
07-5682	Ui Tech 1	PT	A	GP	Juneau	205	14A / B	11.0		45,931	1,582	0	34,773	82,286	0
07-5689	Ui Q/C Auditor	FT	A	GP	Juneau	205	15C / D	12.0		56,655	1,952	0	40,409	99,016	0
07-5694	Employment Security Analyst 2	FT	A	GP	Juneau	99	17O / P	12.0		88,745	3,057	0	52,535	144,337	0
07-5711	Ui Tech 1	FT	A	GP	Juneau	205	14A / B	12.0		50,146	1,727	0	37,949	89,822	0
07-5712	Ui Tech 1	FT	A	GP	Juneau	205	14B / C	12.0		52,129	1,796	0	38,698	92,623	0
07-5713	Ui Tech 1	FT	A	GP	Juneau	205	14C / D	12.0		53,105	1,829	0	39,067	94,001	0

Note: If a position is split, an asterisk (*) will appear in the Split/Count column. If the split position is also counted in the component, two asterisks (**) will appear in this column. [No valid job title] appearing in the Job Class Title indicates that the PCN has an invalid class code or invalid range for the class code effective date of this scenario.

Personal Services Expenditure Detail
Department of Labor and Workforce Development

Scenario: FY2024 Governor (19867)
Component: Unemployment Insurance (2276)
RDU: Employment and Training Services (646)

PCN	Job Class Title	Time Status	Retire Code	Barg Unit	Location	Salary Sched	Range / Step	Comp Months	Split / Count	Annual Salaries	COLA	Premium Pay	Annual Benefits	Total Costs	UGF Amount
07-5714	Ui Q/C Auditor	FT	A	GP	Fairbanks	203	15N	12.0		75,602	2,604	0	47,569	125,775	0
07-5715	Ui Tech 1	PT	A	GP	Juneau	205	14A / B	11.0		46,490	1,601	0	34,984	83,075	0
07-5717	Employment Security Analyst 3	FT	A	GP	Juneau	205	18D / E	12.0		73,775	2,541	0	46,878	123,194	0
07-5720	Ui Tech 1	PT	A	GP	Juneau	205	14B / C	11.0		46,874	1,615	0	35,129	83,618	0
07-5721	Employment Security Analyst 2	FT	A	GP	Juneau	205	17J / K	12.0		78,802	2,715	0	48,778	130,295	0
07-5724	Employment Security Analyst 3	FT	A	SS	Juneau	99	18O / P	12.0		110,258	1,519	0	63,339	175,116	0
07-5725	Ui Tech 1	PT	A	GP	Anchorage	200	14L / M	11.0		60,197	2,074	0	40,164	102,435	0
07-5727	Field Auditor 1	FT	A	GP	Juneau	205	16D / E	12.0		63,796	2,198	0	43,107	109,101	0
07-5738	Ui Tech 1	FT	A	GP	Anchorage	200	14A / B	12.0		47,697	1,643	0	37,023	86,363	0
07-5739	Field Auditor 1	FT	A	GP	Anchorage	200	16G	12.0		66,456	2,289	0	44,112	112,857	0
07-5747	Employment Security Analyst 2	FT	A	GP	Juneau	205	17A / B	12.0		61,688	2,125	0	42,311	106,124	0
07-5751	Ui Tech 3	FT	A	SS	Juneau	205	16E / F	12.0		70,372	970	0	48,266	119,608	0
07-5757	Ui Tech 2	FT	A	GP	Fairbanks	203	15F / G	12.0		63,393	2,184	0	42,955	108,532	0
07-5763	Ui Tech 2	FT	A	GP	Juneau	205	15A / B	12.0		53,625	1,847	0	39,264	94,736	0
07-5764	Ui Tech 1	FT	A	GP	Fairbanks	203	14C / D	12.0		52,086	1,794	0	38,682	92,562	0
07-5766	Employment Security Analyst 3	FT	A	SS	Juneau	99	18F / J	12.0		89,076	1,227	0	55,334	145,637	0
07-5767	Employment Security Analyst 3	FT	A	GP	Juneau	205	18J / K	12.0		84,528	2,912	0	50,942	138,382	0
07-5768	Appeals Officer 2	FT	A	GP	Juneau	205	19N / O	12.0		101,537	3,498	0	57,369	162,404	0
07-5769	Appeals Officer 2	FT	A	GP	Juneau	205	19L	12.0		94,614	3,259	0	54,753	152,626	0
07-5776	Ui Tech 3	FT	A	SS	Fairbanks	203	16A / B	12.0		60,694	836	0	44,609	106,139	0
07-5780	Investigator 2	FT	A	GP	Anchorage	200	16E / F	12.0		64,216	2,212	0	43,266	109,694	0
07-5783	Ui Claim Mgr 2	FT	A	SS	Juneau	205	20K	12.0		100,610	1,386	0	59,693	161,689	0
07-5785	Ui Tech 1	FT	A	GP	Anchorage	200	14L	12.0		64,058	2,207	0	43,206	109,471	0
07-5787	Ui Tech 1	PT	A	GP	Juneau	205	14C	11.0		48,263	1,663	0	35,654	85,580	0
07-5813	Appeals Officer 1	PT	A	GP	Juneau	205	17A / B	11.0		56,738	1,954	0	38,857	97,549	0
07-5816	Employment Security Analyst 2	FT	A	GP	Juneau	205	17L / M	12.0		83,319	2,870	0	50,485	136,674	0
07-5817	Ui Tech 1	FT	A	GP	Juneau	205	14A / B	12.0		50,216	1,730	0	37,975	89,921	0
07-5820	Ui Tech 1	PT	A	GP	Juneau	205	14A / B	11.0		46,113	1,588	0	34,842	82,543	0
07-5821	Administrative Assistant 1	FT	A	GP	Juneau	205	12A / B	12.0		44,158	1,521	0	35,686	81,365	0
07-5832	Accounting Technician 1	FT	A	GP	Juneau	205	12A / B	12.0		43,992	1,515	0	35,623	81,130	0
07-5833	Ui Tech 1	FT	A	GP	Anchorage	200	14B / C	12.0		50,094	1,726	0	37,929	89,749	0
07-5838	Accounting Technician 2	FT	A	GP	Juneau	205	14B / C	12.0		51,522	1,775	0	38,469	91,766	0

Note: If a position is split, an asterisk (*) will appear in the Split/Count column. If the split position is also counted in the component, two asterisks (**) will appear in this column. [No valid job title] appearing in the Job Class Title indicates that the PCN has an invalid class code or invalid range for the class code effective date of this scenario.

Personal Services Expenditure Detail
Department of Labor and Workforce Development

Scenario: FY2024 Governor (19867)
Component: Unemployment Insurance (2276)
RDU: Employment and Training Services (646)

PCN	Job Class Title	Time Status	Retire Code	Barg Unit	Location	Salary Sched	Range / Step	Comp Months	Split / Count	Annual Salaries	COLA	Premium Pay	Annual Benefits	Total Costs	UGF Amount
07-5840	Ui Tech 1	FT	A	GP	Juneau	205	14A / B	12.0		50,216	1,730	0	37,975	89,921	0
07-5846	Ui Q/C Auditor	FT	A	GP	Anchorage	200	15O / P	12.0		78,152	2,692	0	48,532	129,376	0
07-5854	Ui Tech 2	FT	A	GP	Juneau	205	15A / B	12.0		53,788	1,853	0	39,325	94,966	0
07-5857	Ui Tech 1	FT	A	GP	Anchorage	99	14R / S	12.0		79,452	2,737	0	49,024	131,213	0
07-5863	Ui Tech 1	FT	A	GG	Anchorage	200	14M	12.0		66,144	2,278	0	43,994	112,416	0
07-5869	Ui Tech 1	PT	A	GP	Anchorage	200	14B / C	11.0		45,083	1,553	0	34,452	81,088	0
07-5872	Ui Tech 1	FT	A	GP	Juneau	205	14A / B	12.0		50,076	1,725	0	37,922	89,723	0
07-5875	Ui Tech 1	PT	A	GP	Juneau	205	14A / B	11.0		45,973	1,584	0	34,789	82,346	0
07-5878	Administrative Assistant 1	FT	A	GP	Fairbanks	203	12C / D	12.0		45,879	1,580	0	36,336	83,795	0
07-5883	Ui Tech 1	FT	A	GP	Juneau	205	14A / B	12.0		50,216	1,730	0	37,975	89,921	0
07-5884	Ui Tech 1	FT	A	GP	Juneau	205	14B / C	12.0		52,129	1,796	0	38,698	92,623	0
07-5898	Ui Tech 1	FT	A	GP	Juneau	205	14A / B	12.0		50,356	1,735	0	38,028	90,119	0
07-5901	Employment Security Analyst 3	FT	A	SS	Juneau	99	18N / O	12.0		107,285	1,478	0	62,216	170,979	0
07-5917	Ui Tech 1	FT	A	GP	Anchorage	200	14E / F	12.0		54,529	1,878	0	39,605	96,012	0
07-5921	Ui Tech 2	FT	A	GP	Juneau	205	15B / C	12.0		55,851	1,924	0	40,105	97,880	0
07-5922	Emp/Ui Tech Mgr	FT	A	SS	Juneau	205	20F / J	12.0		96,938	1,336	0	58,305	156,579	0
07-5923	Ui Tech 1	FT	A	GP	Juneau	205	14A / B	12.0		50,076	1,725	0	37,922	89,723	0
07-5924	Employment Security Analyst 3	FT	A	SS	Juneau	205	18E / F	12.0		80,310	1,107	0	52,022	133,439	0
07-5944	Ui Tech 3	FT	A	SS	Anchorage	200	16N / O	12.0		81,644	1,125	0	52,526	135,295	0
07-5952	Ui Tech 1	FT	A	GP	Juneau	205	14A / B	12.0		50,356	1,735	0	38,028	90,119	0
07-5966	Ui Tech 2	FT	A	GP	Anchorage	200	15B / C	12.0		53,627	1,847	0	39,264	94,738	0
07-5967	Ui Tech 1	PT	A	GP	Juneau	205	14A / B	11.0		45,973	1,584	0	34,789	82,346	0
07-5986	Employment Security Analyst 2	FT	A	GP	Anchorage	200	17C / D	12.0		63,977	2,204	0	43,176	109,357	0
07-6014	Ui Tech 1	PT	A	GP	Anchorage	200	14B / C	11.0		45,083	1,553	0	34,452	81,088	0
07-6015	Ui Tech 1	PT	A	GP	Anchorage	200	14D / E	11.0		47,842	1,648	0	35,495	84,985	0
07-6017	Ui Tech 1	PT	A	GP	Anchorage	200	14D / E	11.0		47,842	1,648	0	35,495	84,985	0
07-6021	Ui Tech 1	PT	A	GP	Juneau	205	14B / C	11.0		46,874	1,615	0	35,129	83,618	0
07-6023	Ui Tech 1	PT	A	GP	Juneau	205	14B / C	11.0		47,930	1,651	0	35,528	85,109	0
07-6024	Ui Tech 1	PT	A	GP	Juneau	205	14A / B	11.0		45,973	1,584	0	34,789	82,346	0
07-6025	Ui Tech 1	PT	A	GP	Juneau	205	14B / C	11.0		46,874	1,615	0	35,129	83,618	0
07-6026	Ui Tech 1	PT	A	GP	Juneau	205	14A / B	11.0		45,931	1,582	0	34,773	82,286	0
07-6027	Ui Tech 1	PT	A	GP	Juneau	205	14A / B	11.0		45,973	1,584	0	34,789	82,346	0
07-6036	Ui Tech 1	FT	A	GP	Juneau	205	14A / B	12.0		50,915	1,754	0	38,239	90,908	0
07-6037	Ui Tech 1	FT	A	GP	Juneau	205	14A / B	12.0		50,216	1,730	0	37,975	89,921	0
07-6038	Investigator 2	FT	A	GP	Juneau	205	16L	12.0		77,454	2,668	0	48,269	128,391	0
07-IN1904	College Intern 2	NP	N	EE	Juneau	N05	9A / A	12.0		36,953	0	0	3,836	40,789	0

Note: If a position is split, an asterisk (*) will appear in the Split/Count column. If the split position is also counted in the component, two asterisks (**) will appear in this column. [No valid job title] appearing in the Job Class Title indicates that the PCN has an invalid class code or invalid range for the class code effective date of this scenario.

Personal Services Expenditure Detail
Department of Labor and Workforce Development

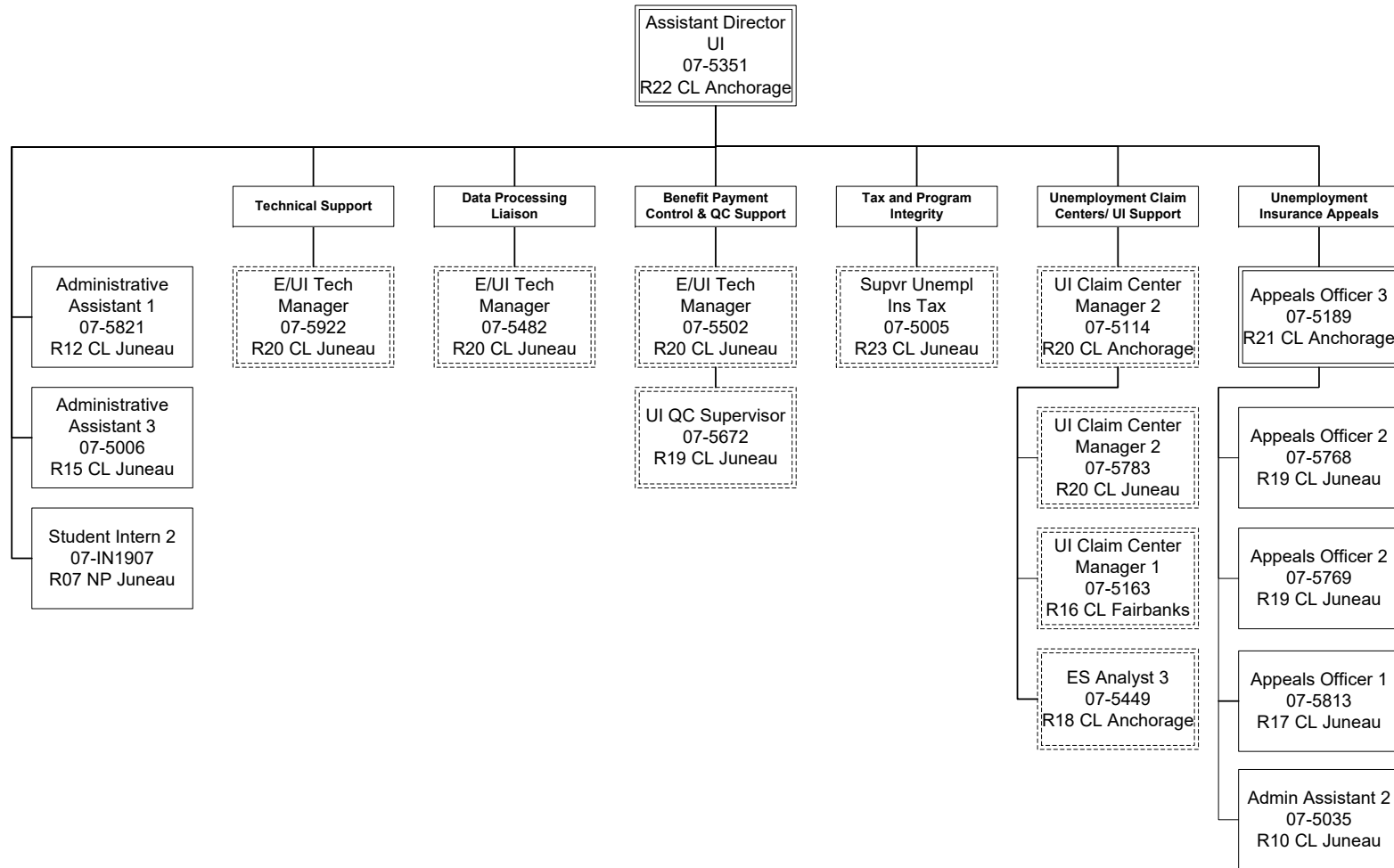
Scenario: FY2024 Governor (19867)
Component: Unemployment Insurance (2276)
RDU: Employment and Training Services (646)

PCN	Job Class Title	Time Status	Retire Code	Barg Unit	Location	Salary Sched	Range / Step	Comp Months	Split / Count	Annual Salaries	COLA	Premium Pay	Annual Benefits	Total Costs	UGF Amount
07-IN1905	College Intern 2	NP	A	EE	Anchorage	N00	9A / A	12.0		35,198	0	0	3,654	38,852	0
07-IN1907	Student Intern 2	NP	N	EE	Juneau	N05	7A / A	12.0		32,994	0	0	3,425	36,419	0
21-3054	Employment Security Analyst 2	FT	A	GP	Juneau	205	17B / C	12.0		64,105	2,208	0	43,224	109,537	0
													Total Salary Costs:	11,074,465	
													Total COLA:	320,257	
													Total Premium Pay:	0	
													Total Benefits:	7,509,056	
													Total Pre-Vacancy:	18,903,778	
													Minus Vacancy Adjustment of 6.97%:	(1,317,500)	
													Total Post-Vacancy:	17,586,278	
													Plus Lump Sum Premium Pay:	0	
													Personal Services Line 100:	17,586,278	
Total Component Months:		2,098.0													

PCN Funding Sources:	Pre-Vacancy	Post-Vacancy	Percent
1002 Federal Receipts	18,056,953	16,798,472	95.52%
1005 General Fund/Program Receipts	5,917	5,505	0.03%
1007 Interagency Receipts	125,905	117,130	0.67%
1054 State Employment & Training Program	357,501	332,585	1.89%
1151 Technical Vocational Education Program Account	357,501	332,585	1.89%
Total PCN Funding:	18,903,778	17,586,278	100.00%

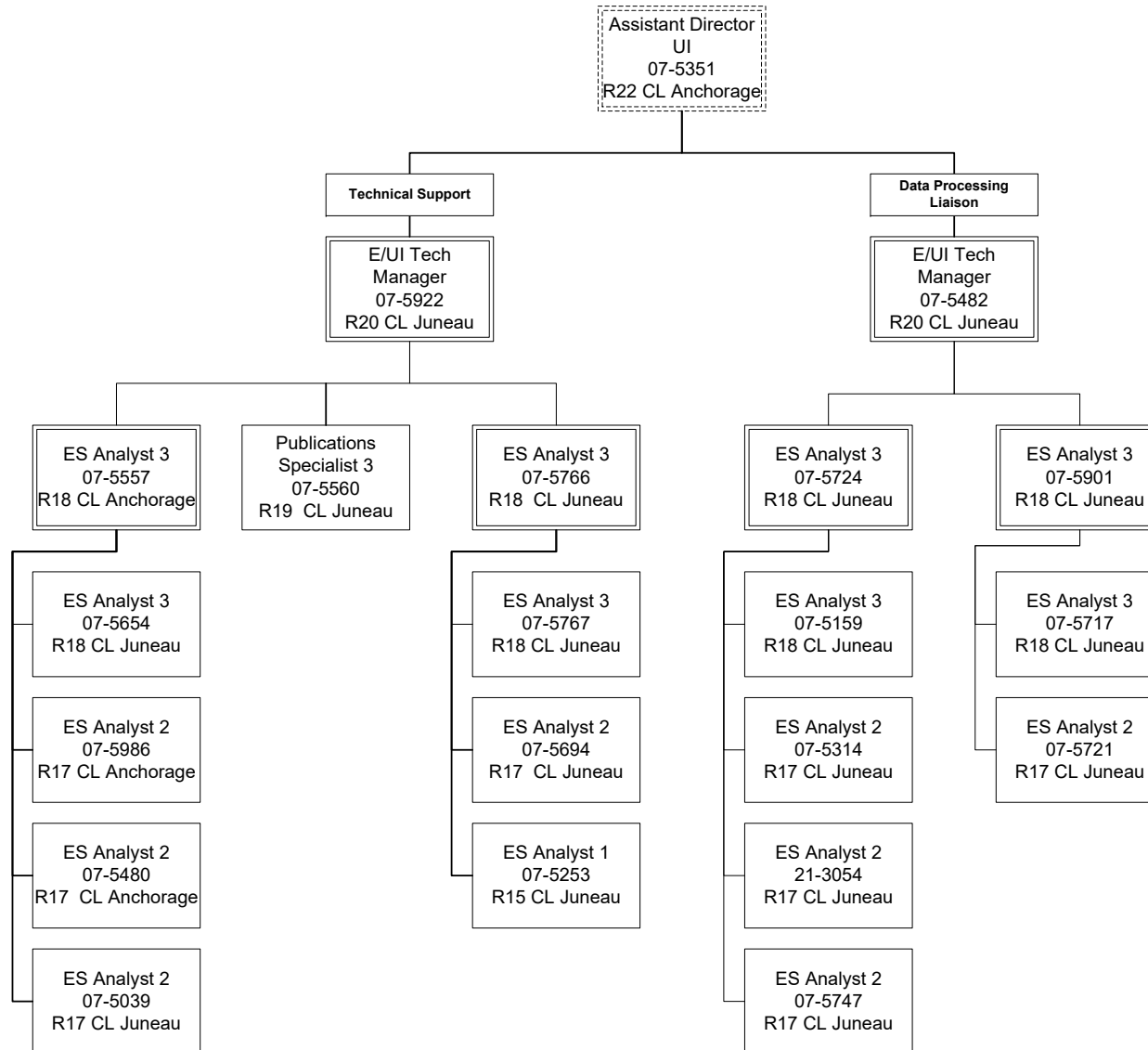
Note: If a position is split, an asterisk (*) will appear in the Split/Count column. If the split position is also counted in the component, two asterisks (**) will appear in this column. [No valid job title] appearing in the Job Class Title indicates that the PCN has an invalid class code or invalid range for the class code effective date of this scenario.

Department of Labor and Workforce Development
 Division of Employment and Training Services / Unemployment Insurance
 FY2024 Governor Organization Chart



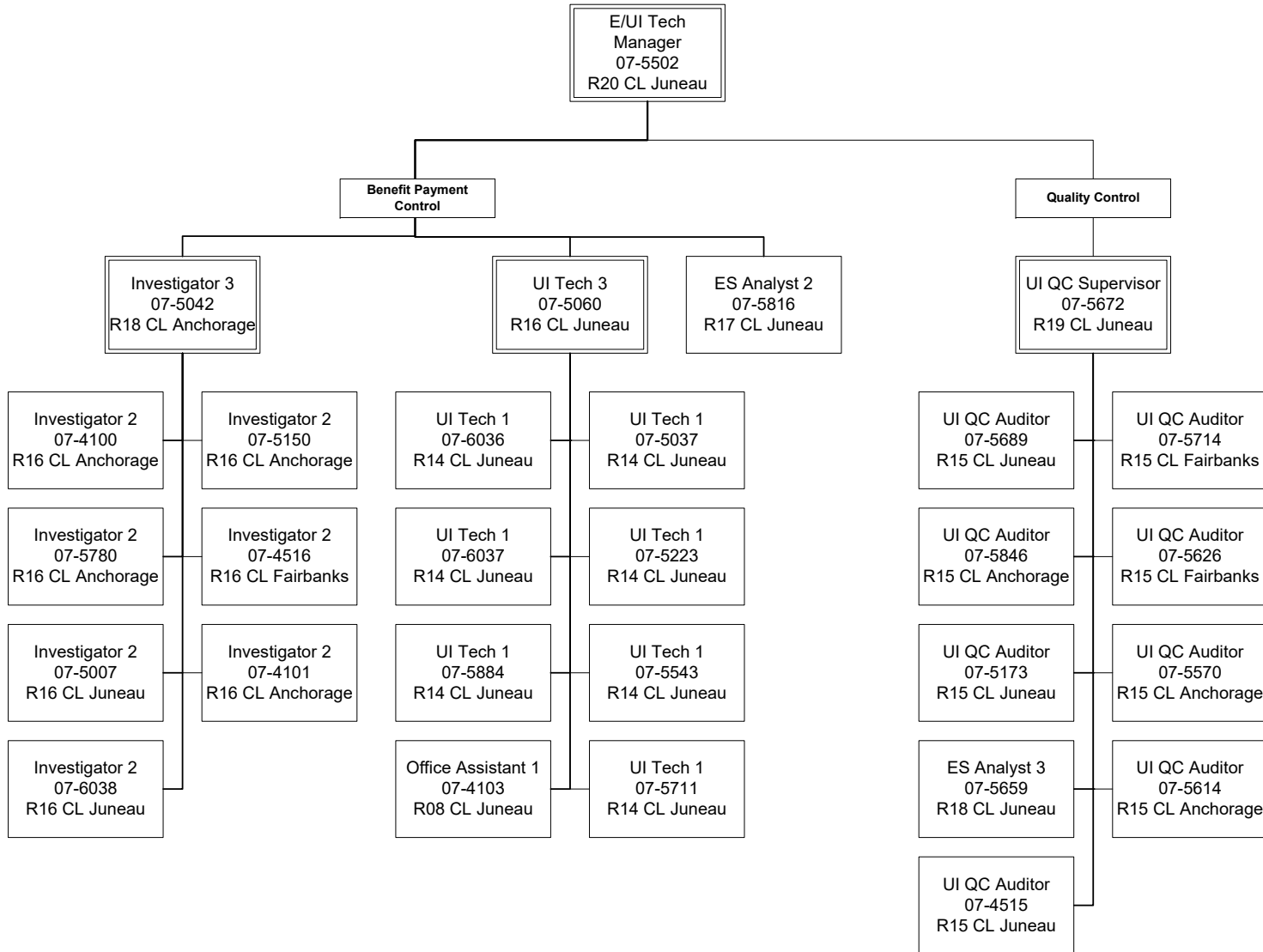
ES = Employment Security
 E/UI = Employment / Unemployment Insurance
 UI = Unemployment Insurance
 QC = Quality Control

Department of Labor and Workforce Development
 Division of Employment and Training Services / Unemployment Insurance
 FY2024 Governor Organization Chart



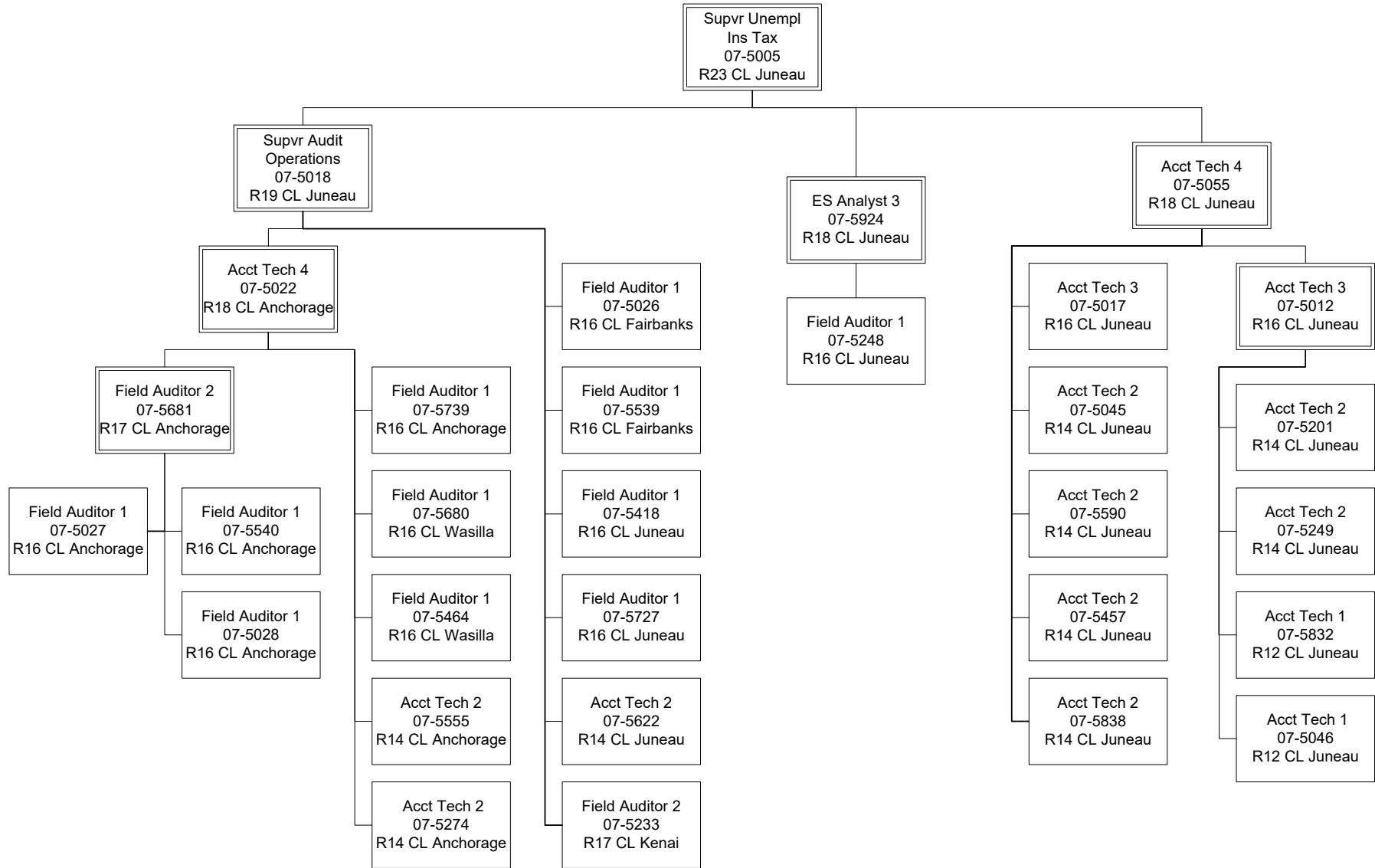
ES = Employment Security
 E/UI = Employment / Unemployment Insurance
 UI = Unemployment Insurance

Department of Labor and Workforce Development
 Division of Employment and Training Services / Unemployment Insurance
 FY2024 Governor Organization Chart



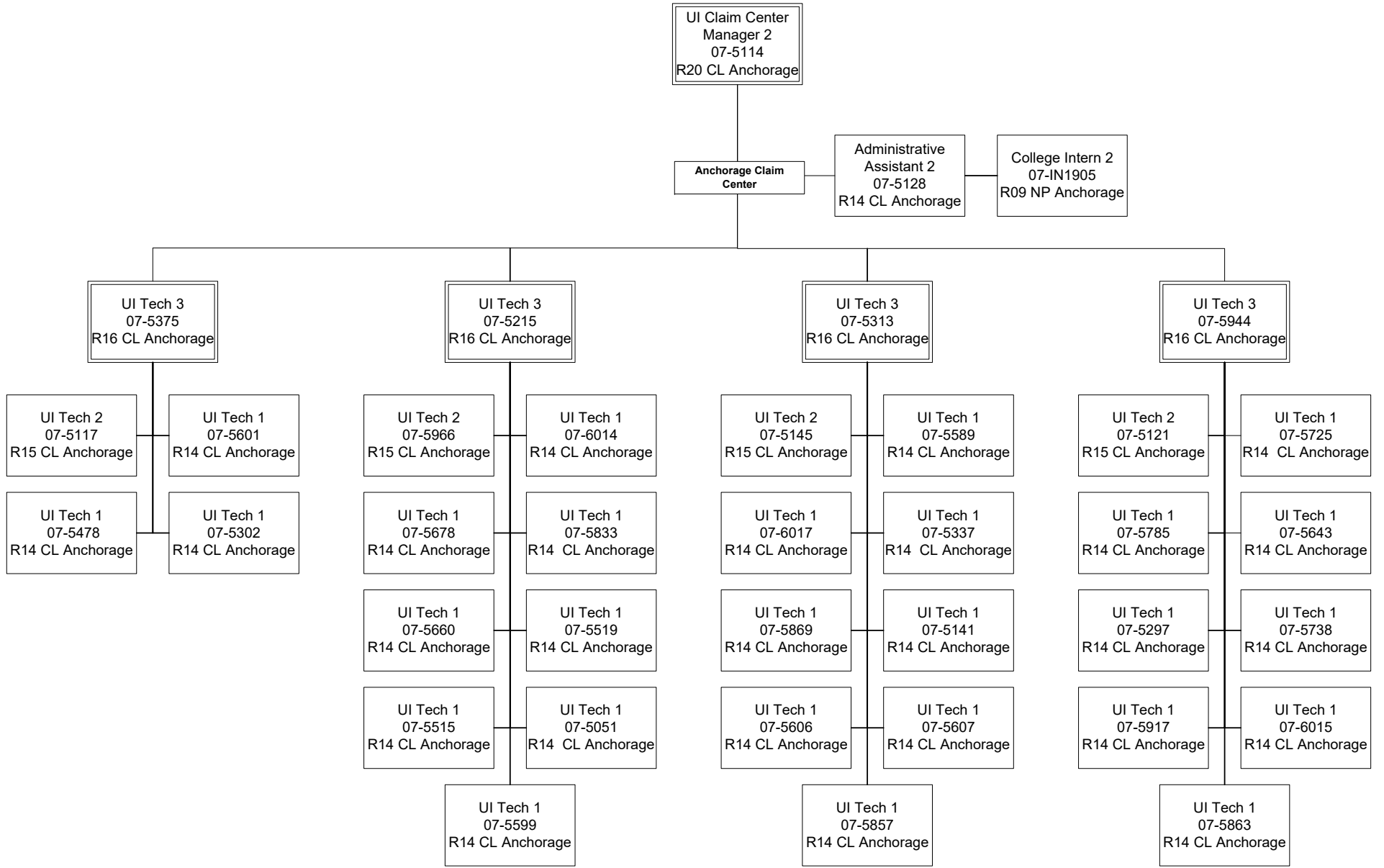
ES = Employment Security
 E/UI = Employment / Unemployment Insurance
 UI = Unemployment Insurance
 QC = Quality Control

Department of Labor and Workforce Development
 Division of Employment and Training Services / Unemployment Insurance
 FY2024 Governor Organization Chart



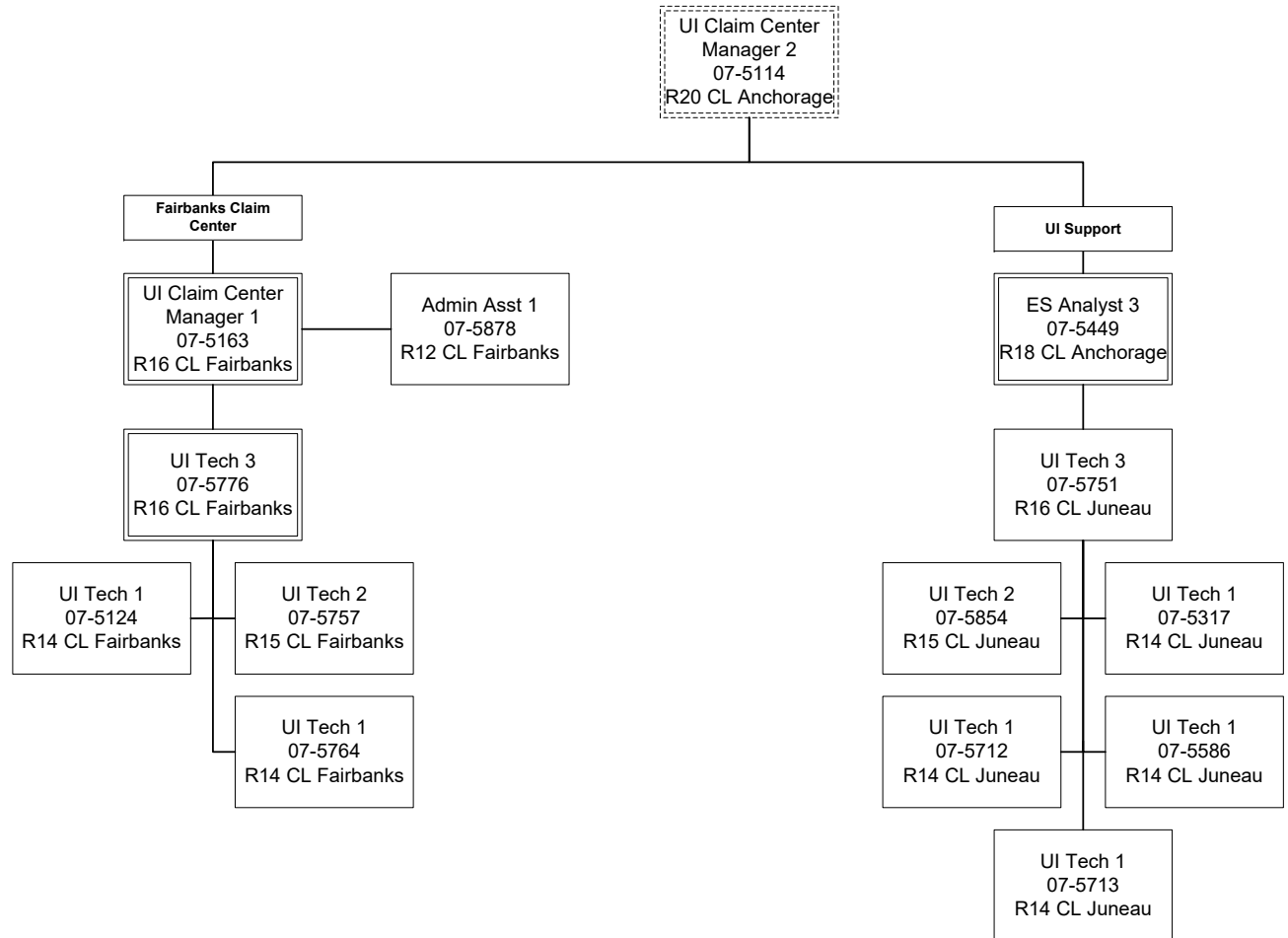
ES = Employment Security
 E/UI = Employment / Unemployment Insurance
 UI = Unemployment Insurance
 QC = Quality Control

Department of Labor and Workforce Development
 Division of Employment and Training Services / Unemployment Insurance
 FY2024 Governor Organization Chart



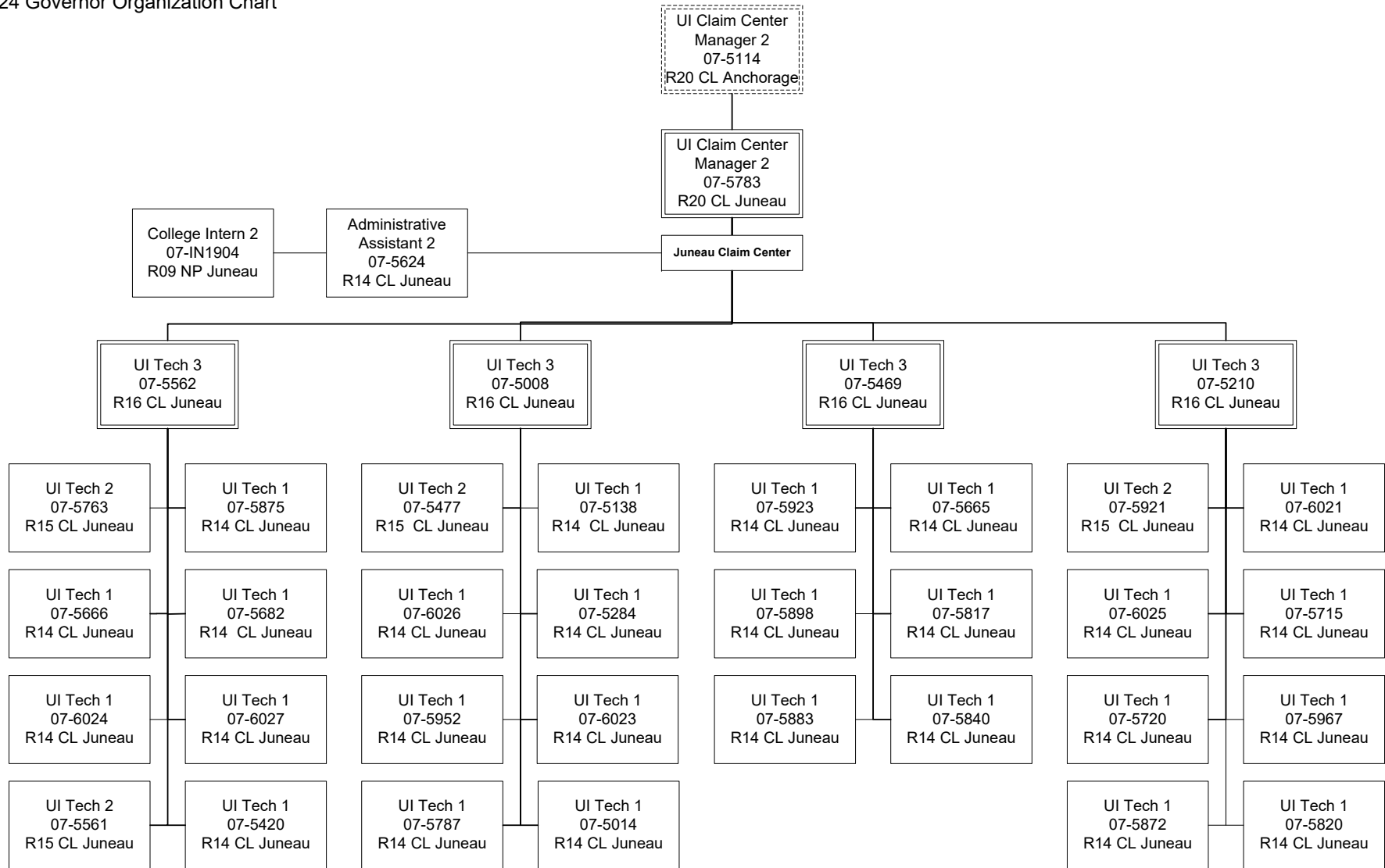
ES = Employment Security
 E/UI = Employment / Unemployment Insurance
 UI = Unemployment Insurance
 QC = Quality Control

Department of Labor and Workforce Development
 Division of Employment and Training Services / Unemployment Insurance
 FY2024 Governor Organization Chart



ES = Employment Security
 E/UI = Employment / Unemployment Insurance
 UI = Unemployment Insurance
 QC = Quality Control

Department of Labor and Workforce Development
 Division of Employment and Training Services / Unemployment Insurance
 FY2024 Governor Organization Chart



ES = Employment Security
 E/UI = Employment / Unemployment Insurance
 UI = Unemployment Insurance
 QC = Quality Control