

State of Alaska
FY2024 Governor's Operating Budget

Department of Public Safety
Alaska State Trooper Detachments
Component Budget Summary

Component: Alaska State Trooper Detachments

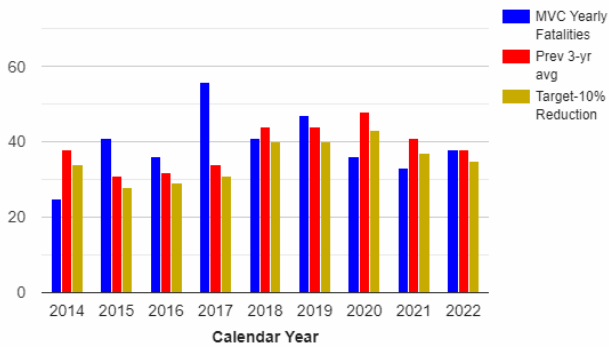
Contribution to Department's Mission

Preserve public peace; protect life, property, and resources.

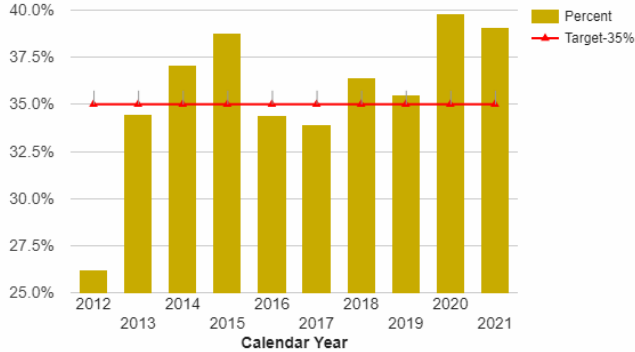
Results

(Additional performance information is available on the web at <https://omb.alaska.gov/results>.)

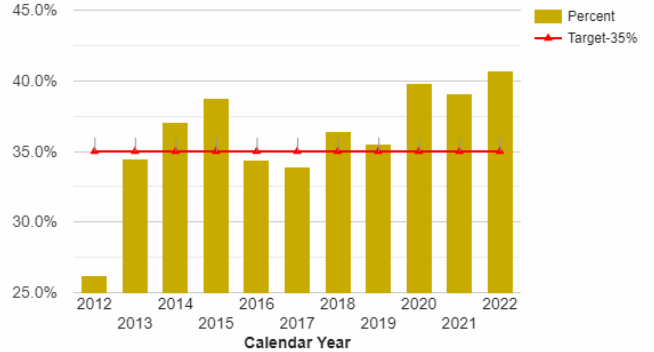
Number of Fatalities from Motor Vehicle Crashes



Percentage of Property Crimes Investigated and Closed with the Identification of a Suspect or Offender



Percentage of Property Crimes Investigated and Closed with the Identification of a Suspect or Offender



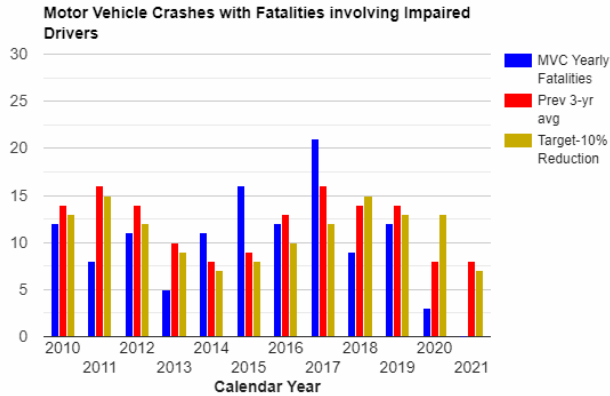
Core Services

- Highway safety.
- Preserve public peace.
- Provide additional rural law enforcement training.

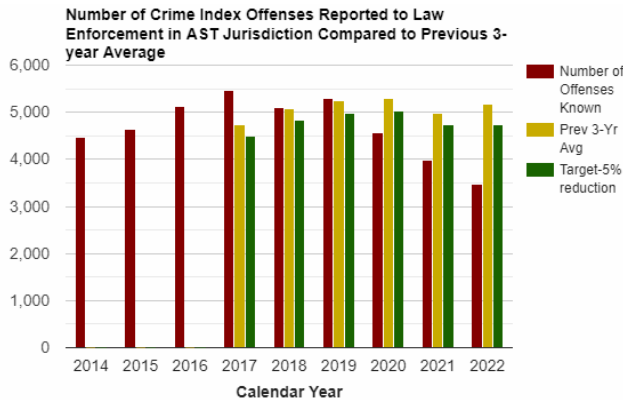
Measures by Core Service

(Additional performance information is available on the web at <https://omb.alaska.gov/results>.)

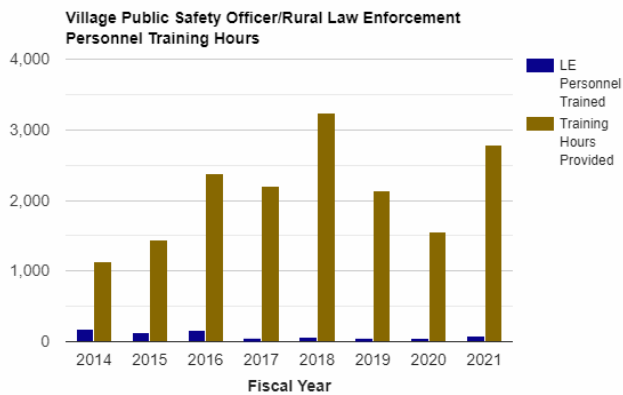
1. Highway safety.



2. Preserve public peace.



3. Provide additional rural law enforcement training.



Major Component Accomplishments in 2022

In FY2022, the Alaska State Troopers (AST) accomplished the following:

- Handled more than 139,406 calls for service within AST jurisdiction.
- Responded to more than 2,884 motor vehicle collisions.
- Responded to 511 search and rescue related incidents in FY2022, including overdue hunters, snowmobilers, hikers, boaters, and medical evacuations off the road system, assisting, locating, or recovering 805 persons.

- Issued 4 Silver Alerts.
- Responded to 102 emergency beacon alerts and 30 reported aircraft crashes which included 3 aircraft fatality crashes, 7 aircraft injury crashes, and 13 aircraft crashes involving property damage only.
- Solved 84 percent of the homicides that occurred within AST jurisdiction or for which AST was asked to adopt the investigation from a borough, city, or municipality.
- Served or closed over 7019 warrants.
- Served or closed over 993 writs.
- Served or closed over 941 Domestic Violence Orders.
- Continued partnership with Department of Health and Social Services on Project Hope to help combat the opioid epidemic.
- Continued to provide the life-saving drug Naloxone into field for use by Alaskan law enforcement officers.
- Implemented continued integration of other agencies into the Alaska Records Management System (ARMS).
- Conducted crime scene investigations for rural law enforcement.
- Held Alaska Association of Chiefs of Police Executive Development seminar.
- Held K-9 training for both AST and multiple municipal police agencies.
- Ongoing recertification / training in firearms, use of force and mental health awareness training.

Recruitment: The Recruitment Unit continued to implement techniques such as recruitment presentations at job fairs, schools, and universities and well-attended hiring events both in and out of state. Excellent outcomes occurred from the leave incentive program for commissioned members who mentor candidates. The Recruitment Unit processed 1,535 applicants during FY2022, up from 1,480 applications in FY2021. In FY2022, 54 state trooper recruits/lateral hires reported to the Academy in Sitka for basic police training. The unit also processed 301 court services officer (CSO) applications. Additionally, ten court services officer hires reported to the Academy in FY2022.

The Recruitment Unit and the Public Information Office increased collaboration this year to present videos and photographs that capture DPS's work. Social media platforms and web technology effectively helped recruit applicants for the department. DPS has also enhanced exposure to a larger audience by using promotional links to the recruitment website within various social media platforms.

Hiring and training law enforcement officers from other agencies across the nation gives DPS the advantage of gaining professionally trained officers with one year or more of patrol experience. In addition, the incentive of allowing the officers to include up to six years of law enforcement experience to increase their salary and benefits with the state of Alaska is helpful. The Recruitment Unit modified applicant briefings for the Alaska State/Wildlife Trooper and Court Services Officer positions. Updates to the questionnaire form make it easier for candidates to offer precise details. Additionally, these updates also make the background investigation run more smoothly.

Key Component Challenges

Core Police Services: Requests for services in many areas of Alaska continue to increase. Alcohol and drug involvement in crime remains a significant challenge. Ongoing technological changes and sophistication allow new criminal exploitations, including identity theft, child pornography, online child sexual exploitation, and computer fraud schemes. Terroristic threats to infrastructure require greater patrols, more response planning, and more efforts aimed toward public reassurance. The complexity of calls for service and the commensurate time involved in current requirements for documentation and reporting of events has resulted in Alaska State Troopers (AST) becoming an increasingly reactive organization.

For most of the commissioned personnel assigned to AST, proactive enforcement such as highway traffic patrols, burglary suppression, and community policing continue to be assigned a lower priority as personnel respond from one call for service to the next, day in and day out. This trend is expected to continue into FY2024 with areas such as proactive traffic enforcement being negatively impacted.

AST's technology base continues to lag far behind other police and public service organizations. DPS is expanding the footprint of in car video technology to AST and Alaska Wildlife Troopers (AWT) vehicles in the Interior Region, while piloting new methods to collect, maintain, and retrieve the data. Currently vehicles with cameras on the Kenai Peninsula, Mat-Su Valley, Glennallen, Fairbanks off load video via wireless network at a trooper post. Servers handling this data are still outdated and do not have redundancy. DPS is piloting offloading the video data through an encrypted wireless connection from each vehicle to a vendor's secure cloud storage solution. Upon completion

of this phase in the Interior, AST will look at deploying this method of offloading video data in other regions of the state. This method of offloading the video data will allow AST to expand its patrol vehicle in car camera system to locations that have not ever had in car video capabilities due to cost and technological limitations. DPS received funding and is procuring body worn cameras. The evidence capturing technologies are an expectation of today's public. There are significant bandwidth lags in many of Alaska's rural areas. This results in tremendous challenges for personnel who are entering necessary information into police reports Alaska Records Management system (ARMS) and related databases and will significantly impact line of business activities including the uploading of body worn camera video footage.

AST continues to refine the merger of data between the Alaska Public Safety Information Network (APSIN) and ARMS. As a case activity is incorporated into ARMS, there have been some identified hurdles in clearly capturing the enforcement activity and subsequently reporting it in the same format as in prior years. AST also experiences gaps in data for reporting due to lack of access to data being captured by dispatch centers contracted to provide dispatch services to AST. The recent addition of a computer aided dispatch (CAD) application in DPS' dispatch center in Fairbanks with an interface to push data from CAD to ARMS has increased AST's ability to capture, research, report on enforcement activity. AST expects to continue to see some deviation in reportable activity with some downward trends not accurately reflecting the current levels of true calls for service and responses. There are still challenges in mining the data to create accurate reports depicting a true picture of AST activity. AST anticipates that this will continue into FY2024.

Court Security: The prisoner transport volume decreased approximately 15 percent from FY2021 to FY2022. The division moved 40,197 prisoners in FY2021 and 34,257 prisoners in FY2022. This number is dramatically increasing as Covid-19 restrictions are lifted and the Alaska Court System resumes normal activities. FY2022 saw a division-wide Court Services Officer (CSO) vacancy rate of 12.5% at the end of FY2022. Anchorage Judicial Services Unit's vacancy rate was 20% (5 positions) at the end of FY2022. Three additional CSO positions were created in Bethel, Kodiak and Dillingham. These positions will assist local troopers by relieving them of some JS and court services duties.

Recruitment: The number of applicants for trooper positions over the past year has continued to increase from prior years. A significant percentage of the applicants were attributable to the recruiting efforts done by working AST and AWT personnel, fresh new advertising videos, as well as the recruitment website and paid LinkedIn, Facebook and Instagram advertising. However, recruitment and retention of quality candidates continues to be the largest challenge for troopers and a significant increase in retirement-related separations is expected in FY2023 and FY2024. Although the recruitment unit has been successful in increasing applications, attracting quality applicants remains a challenge. The requirement that troopers be willing to attend a residential academy in Sitka, then eventually transfer to rural locations where housing and amenities are limited or inadequate creates recruitment challenges for AST that are not faced by other police agencies with which AST competes for personnel.

Rape and Domestic Violence: Alaska's rate of forcible rape is three times the national average. Rates of domestic violence are among the highest in the nation. The rates of victimization of Alaska Native women and children, particularly in rural Alaska, are even greater.

During FY2022, AST continued its use of data from the Alaska Records Management System (ARMS) to streamline the review of Domestic Violence, Sexual Assault and Sexual Abuse of a Minor investigations. This data is now reviewed quarterly, trends are analyzed, and the commensurate results are communicated to Detachment Commanders to help improve the quality of investigations and timeliness of finished reports.

DETACHMENT CHALLENGES

On a statewide level, each Detachment has seen an increase in criminal activities associated with the influx of drug trafficking and abuse, particularly associated with illicit drug and narcotics, including fentanyl and other synthetic opioids. The downstream effects of drug crimes result in victimization of citizens who experience property crimes, thefts, robbery, and other person-on-person crimes at the hands of the drug criminals; further impacting AST's ability to efficiently provide proactive enforcement.

“A” Detachment South (Southeast Alaska) – In a continuing trend, socioeconomic opportunities within “A” Detachment's area of responsibility have grown as have the requirements on the limited trooper resources. Southeast Alaska is one of the primary tourism meccas of the state. Tourism continues to increase with over one

million cruise ship passengers expected to visit Southeast Alaska ports and communities throughout the upcoming year. It should be noted that starting spring of 2023, for the first-time, cruise ships will be using Klawock as a regular port of call. The influx of these visitors to Southeast Alaska will further tax the available AST resources in this region due to the anticipated increased calls for service.

“A” Detachment South is comprised of three trooper posts located on Prince of Wales Island, Ketchikan, and Juneau. Additionally, there are two Judicial Services (JS) Offices located in Ketchikan and Juneau. The Juneau JS Office has maintained a Court Services Officer (CSO) vacancy throughout the year. Extensive recruitment efforts have been unsuccessful in filling this position. Two new clerical positions were added to the Juneau Post at the end of this fiscal year which will help with the added workload due to the Ketchikan dispatch closure.

Southeast Alaska has several Alaska Wildlife Trooper (AWT) vessels positioned throughout the region and two small DPS aircraft (Cessna 185 on floats and a Supercub on floats) based in Juneau assigned to a sole AWT pilot. These are utilized in cooperation with AWT personnel for response and patrol related purposes. When DPS planes or watercraft are unavailable, chartering commercial aircraft, flying seat fare if available, taking the ferry, or not responding are the only viable options. Additionally, the AWT aircraft are not Instrument flight rule rated, which greatly limits their response capabilities in inclement weather. Inclement weather is a regular occurrence and concern in Southeast Alaska. AWT vessels are not a regular option due to the significant response time associated with the extended travel distances to most of the remote communities. Troopers are restricted to the timing, routes, and availability as dictated by the few charter operators. DPS Court Services Officers routinely face similar issues when transferring prisoners from the small community jails and villages to the large state correctional centers in Ketchikan, Juneau, and Anchorage. Each community contractually limits the number of days a prisoner can be held before transport to a state correctional center. Much like Western Alaska, this can be problematic when there is a need for an immediate response to investigate significant crimes, incidents, or transferring prisoners with medical or mental health issues. Air travel, whether scheduled or chartered, is expensive, limiting the number of routine visits made to each village.

Transportation costs, lodging, and man hours consume travel budgets. There are over a dozen villages and small communities in “A” Detachment South. Reaching most of the communities within the region requires costly modes of transportation. This type of travel consumes time that cannot be allocated towards tangible and meaningful one-on-one service to the public. The detachment incurs lodging costs for overnight visits and unexpected weather conditions routinely delay or hamper return to the respective post.

Radio and cell towers are few and communication is extremely limited in “A” Detachment South’s remote communities and locations. At times, the only viable method of communication is by satellite phone, which are inherently unreliable in Southeast Alaska due to the mountainous terrain and weather conditions. This creates impediments to law enforcement and AST’s ability to provide efficient and effective public safety services. This is a significant officer safety hazard to the trooper in the event of an emergency such as a combative suspect or medical issue. Issuing every trooper a Garmin inReach would greatly enhance reliable communications throughout the area.

The number of search and rescue (SAR) missions increased over the previous year. SARs for the last several years have continued an upward trend due in part to increased numbers of visiting tourists. SAR incidents can be tragic, producing high profile headlines and often involving horrific aircraft crashes related to the commercial travel and tourism industry. Incidents such as this have the potential to draw a great deal of scrutiny to training, capabilities, and overall response. These incidents regularly become high profile and incur significant unanticipated costs.

“A” Detachment North (Kenai Peninsula) – This region consists of the entire Kenai Peninsula and the west side of Cook Inlet (Tyonek and Beluga) with headquarters in Soldotna. The detachment’s northern area of responsibility reaches as far north as Eagle River for search and rescue incidents. The Kenai Peninsula continues to be a preferred recreational destination for many of Alaska’s residents during both the summer and winter. Trooper posts are located in Seward, Soldotna, and Anchor Point. Court Service Officers are assigned to Kenai and Anchor Point.

The detachment maintains a traffic enforcement presence along the Seward Highway south of milepost 75 due to a high number of serious injury and fatality crashes along with heavy seasonal use traffic during summer months.

The City of Anchorage provides traffic enforcement and general law enforcement services on the Seward Highway north of milepost 75.

Seward troopers cover all calls for service from Lowell Point in Seward to mile 75 on the Seward Highway, including the Hope and Portage Highways, as well as the village of Chenega Bay. The Seward Post remained fully staffed during this reporting period.

Soldotna post is one of the three training posts for new troopers. On average, approximately 50 percent of the assigned troopers have less than five years of experience. The leadership roles fall to more tenured troopers who also serve as field training officers, which can put a heavy strain on staff. Turnover is relatively high. As new troopers gain the experience level and knowledge to become fully contributing assets, they transfer to other locations/units. Soldotna is generally staffed with a sergeant and four troopers per shift. Due to military and injury leave along with normal absences due to personal leave and training, most shifts in Soldotna have at most three people on duty. Those troopers spend much of their patrol time going from call to call, which leaves very little time for adequate investigations or proactive work such as traffic enforcement, community outreach, and drug interdiction. Soldotna Post has been short staffed much of this fiscal year, generally running at a 25% shortage. As a result, the detachment required a significant amount of overtime compared to previous years to cover the calls for service.

There continues to be an ongoing issue with abandoned vehicles on the Kenai Peninsula. Working groups including the State of Alaska Department of Transportation, Department of Public Safety, and the Kenai Peninsula Borough were established to review the issue and collaboratively work together to mediate the number of abandoned vehicles.

The configuration and relationship with the Soldotna Public Safety Communications Center (SPSCC) changed in FY2022. Administrative work processes that were previously handled by dispatch personnel have been shifted to Soldotna Post clerical staff. The additional new workflow is challenging for the current clerical support staff at Soldotna Post. An evaluation of current workload and cross training has allowed the Detachment to better accomplish the additional workload.

"B" Detachment (Mat-Su Region) – "B" Detachment provides primary public safety services to nearly 115,000 permanent residents in the Mat-Su Borough, Valdez, Glennallen, and surrounding villages and assists municipal police agencies frequently with providing services to an additional estimated 15,000 residents. In addition to full-time residents, many tourists and residents from other areas of Alaska regularly travel in and out of "B" Detachment's edges/borders for recreation. Although the "B" Detachment area is not the largest in square miles, it services the highest population density of all other detachments. "B" Detachment also borders the City of Anchorage, with a population of nearly 300,000. Due to the closeness, many Alaska residents and non-residents commute to, from, and through "B" Detachment communities. "B" Detachment has three primary trooper offices or "posts" located in Palmer, Wasilla, and Glennallen.

The Mat-Su Borough is now the second most populated area in the state, second to the neighboring City of Anchorage. The borough accounts for about forty-seven percent of the area encompassed by "B" Detachment's borders.

During FY2022 "B" Detachment responded to 39,617 calls for service (CFS). "B" Detachment troopers responded to 2,236 Disturbances/Crimes Against Person calls. Troopers additionally responded to 3,488 traffic incidents, which includes 1,508 Motor Vehicle Crashes (MVC's), 287 Driving Under the Influence (DUI) arrests, and 792 REDDI (Report Every Dangerous Driver Immediately) reports. The core Mat-Su Valley area takes in over 90% of the call volume for the whole detachment, averaging 98 calls per day, spread between an average of 9 to 10 Troopers on duty. The average "B" Detachment Trooper in the Mat-Su handles 156 calls for service per month or 1,877 per year, ranging from civil disputes and neighborhood disagreements to active shootings, home invasion robberies, and homicides. Due to low staffing in "B" Detachment, troopers continue to face increased risks of personal injury. The volume of police pursuits and officer-involved shootings has stayed the same from 2021 and into 2022, after seeing dramatic rises from previous years.

"B" Detachment troopers are constantly faced with prioritizing calls for service, leaving little time for proactive law enforcement patrols, follow-up investigations, or traffic enforcement during regular duty hours. Overall overtime costs are high due to mandatory staffing requirements for safety. Troopers work many of their regular days off,

including extended duty days and holidays, to meet the job demands. Despite a 2018 study that recommended a 57% increase in trooper staffing in "B" Detachment, the number of positions has remained stagnant. Since 2015, the Wasilla Police Department has grown by over 33%, while AST's staffing has changed little. Troopers often must rely upon officers from Palmer and Wasilla Police Departments to respond to priority calls for service either as the primary responder or to provide backup to a lone trooper. These calls are often well outside the city limits of either city.

"B" Detachment continues to respond to high numbers of property-related crimes primarily driven by an epidemic of illicit drugs. The Criminal Suppression Unit (CSU) continues to be highly successful. The CSU recovered \$529,884 in stolen property, seized/recovered over 53 firearms that were either reported stolen or found in possession of felons, and recovered 50 stolen vehicles/ATVs. Historically, they have been a driving force in the Mat-Su Valley in solving complex criminal cases such as robberies and home invasions and identifying and arresting serial burglary suspects. The CSU augments their colleagues in patrol when staffing shortages dictate and works jointly with other investigative and neighboring law enforcement entities while focusing on high crime density areas. Due to promotions, separations, and transfers, it was difficult to keep CSU fully staffed in 2022.

Services Officer (CSO) positions are needed to ensure officer safety and adequate coverage to meet increasing demand at the Palmer courts and carry out judicial services' core functions. Work includes transporting prisoners from correctional facilities to court appearances and other appointments, providing security to the court, protecting the judiciary, and serving documents to include subpoenas, summons, writs, protective orders, complaints, and other notices. If there aren't inadequate numbers of CSOs to handle the workload, these functions fall to State Troopers to complete. Criminal activity at the correctional centers require AST response and investigation.

Glennallen Post is normally staffed with a sergeant and four troopers. During FY2022 Glennallen AST handled 914 ARMS incidents with a Sergeant and two to three Troopers. To address statewide staffing concerns that are impacting the ability to keep Glennallen staffed, AST has been utilizing troopers from other areas to pick up overtime shifts for coverage in Glennallen. Troopers work closely with Copper River Native Association Village Public Safety Officers (VPSO) to police the numerous road-accessible villages in the Copper River area.

"B" Detachment continues to invest in Crisis Intervention Training (CIT) for many troopers. Due to Covid-19, no CIT academy was held in 2020 and 2021. The first CIT academy since 2019 was held in May of 2022, with another planned for early 2023. "B" Detachment command works closely with the State Mental Health Trust and the Mat-Su Health Foundation on the "Crisis Now" model of mental health intervention and diversion from law enforcement response that has become the model across much of the nation. These partnerships provide an option local Troopers have not previously had to serve citizens in a mental health crisis. The goal is to help people experiencing mental health crises but who have not committed a crime receive necessary help while reducing trooper's time on the non-criminal contact.

"B" Detachment Command continues to communicate with local leaders to establish a better relationship, formulate plans, and build strong partnerships to address increasing community needs and concerns. "B" Detachment has set regular meetings with the Mat-Su Borough Community Councils for Public Safety, comprised of leaders from local community councils, and has established internal procedures that allow Sergeants and patrol troopers to appear at council meetings to promote more proactive community relations culture within "B" Detachment.

The foundation of better community relations encompasses six pillars: Building Trust and Legitimacy, Policy and Oversight, Technology and Social Media, Community Policing and Crime Reduction, Training and Education, and Officer Wellness & Safety.

"C" Detachment (Western Alaska) – The largest geographical detachment within AST, "C" Detachment's population is scattered throughout an area larger than the state of California. "C" Detachment consists of the area west of the 152nd vertical longitudinal line. This encompasses the Aleutian Islands, the Kodiak Island archipelago, Bristol Bay, Yukon Kuskowkim, Norton Sound, and Northwest Arctic Borough areas. These areas are considered "Bush" Alaska and apart from Kodiak, are all considered off the road system. Travel to these areas from an urban center such as Anchorage is only possible by aircraft. Travel from the larger regional "hub" communities such as Kodiak, Dillingham, Bethel, Nome, and Kotzebue are by aircraft all year and dependent upon the season by other

modes of travel such as watercraft, off road vehicles including four wheelers or snow machines, depending on weather conditions. Troopers are required to travel using all these methods during routine patrol and for emergency response. Emergency response times for a trooper to reach a community in Western Alaska can range from several minutes or hours to several days depending on the location and the weather. These geographical challenges are often combined with minimal staffing and a lack of modern infrastructure, creating significant operational issues. Additional factors include the lack of housing and adequate office space, creating hardships for troopers and negatively affecting their ability to accomplish the mission of the department.

“C” Detachment has the highest proportion per capita of sexual assault and sexual abuse of a minor cases in the entire state which are a primary focus of Troopers. Efforts to provide advanced training to “C” Detachment Troopers to effectively investigate these serious crimes continued, utilizing the best-practices model of Sexual Assault Response Teams (SART) and a growing number of Child Advocacy Centers (CACs) in the region. In FY2022 the unit known as the Violent Offenders Unit (VOU) was changed and became a part of the Alaska Bureau of Investigation (ABI) as ABI Rural Investigations. The ABI Rural Investigations Unit consists of a supervising Sergeant and three (3) investigators located in Bethel, one investigator in Dillingham, one investigator in Nome, and one investigator in Kotzebue. These positions will be staffed in the future. ABI Rural Investigations Unit will focus on homicides, sexual assaults, and other felony assaults throughout western Alaska.

Cell phone technology continues to expand into rural Alaska allowing most citizens to call to report crime and request assistance. This technology links rural Alaska in a much more comprehensive manner than in the past. Although this is positive in that it provides the public with greater access to law enforcement, it increases the number of calls that must be screened and prioritized. To address this, “C” Detachment continues to utilize the dispatch center in Fairbanks to provide dispatch services to answer after-hours calls and initiate incident information for all detachment posts. This has improved documentation of calls for service and response to citizen requests for assistance. Additionally, 9-1-1 calls in Western Alaska are now directed to the Fairbanks dispatch center, enhancing the level of service provided. “C” Detachment lacks important technological infrastructure, such as reliable high-speed internet, that is present in other areas of the State. As law enforcement and AST move to more technologically based systems such as ARMS and online systems, the Troopers experience significant time delays and inefficiencies due to connectivity and similar resources.

Significant effort has been made to increase investigative training for troopers assigned to C Detachment. This training uses multiple delivery methods to provide uniformity across the detachment and ensure current practices and investigative skills are consistent with national best practices. First line supervisors and administrative support staff are actively involved with identifying topics and resources to enhance content and quality of courses offered.

Coordination continues with other agencies to improve relationships throughout the region. “C” Detachment is relied upon by many agencies, both State and Federal, in accomplishing their missions; these partnerships are vital in working to meet the overall public safety needs of communities. C Detachment works closely with the court system to move prisoners from Department of Corrections facilities in large communities to smaller regional contract jails for court proceedings. This creates significant logistical and financial impacts to “C” Detachment resources.

“C” Detachment continues to utilize the alternate work schedule for small communities throughout the Detachment. This model consists of Troopers who work two weeks in the community on extended shifts and then have a two week off duty period outside of the community. This model provides trooper coverage and reduced response times in the furthest reaches of rural Alaska. Expanded implementation of this schedule would spread the significant workload in Western Alaska and allow troopers to be placed in communities that have not had a law enforcement presence in the past. This schedule has been implemented for communities across “C” Detachment to include Togiak, Hooper Bay, Emmonak, St. Mary’s, Aniak, Bethel, Unalakleet, and Selawik. Communities located near these areas also benefit from having a Trooper located in these locations.

Staffing is a significant challenge due to issues such as Trooper retirements and housing shortages. It is also a challenge to hire and retain non-commissioned support staff. It takes several posting periods to find qualified applicants to fill these non-commissioned positions and retention remains a struggle.

“C” Detachment has a substantial number of search and rescue incidents every year. These numbers highlight the

need for additional resources to support the efforts in “C” Detachment. There is an ongoing need for fixed wing aircraft, helicopters, and civilian pilots due to the decreased availability of vendors to provide charter services to the department in rural areas. These department resources are used to respond to significant incidents throughout “C” Detachment where time is of the essence for preservation of life and limb. Civilian pilot positions in Nome, Kotzebue, and Bethel include full time pilots living in those communities as well as support pilots based in Anchorage to operate state aircraft. The uncertain future of commercial aircraft operations in the region, such as the airline closures and reduced flights, highlights the need for continued focus on independent DPS response capability. The limited number of available DPS aircraft and limitations of the type of aircraft owned by the department will continue to provide challenges.

“D” Detachment (Fairbanks Region) – The Alaska State Troopers’ “D” Detachment covers an area of 370,000 square miles. The headquarters of “D” Detachment is in Fairbanks and serves as one of AST’s three training posts. Naturally, this training post sees significant turnover as relatively new Troopers move on to rural assignments. “D” Detachment also has Trooper outposts in Delta Junction, Tok, Galena, Nenana, Healy, and Cantwell.

Troopers in “D” Detachment are responsible for managing search and rescue operations throughout Interior Alaska. These missions involve the use of an assigned A Star Helicopter and a Cessna 206. “D” Detachment Troopers often manage incidents with the assistance from AWT, the Army Guard, the Air Guard, and the Civil Air Patrol.

During FY2022, the “D” Detachment Criminal Suppression Unit (CSU), greatly assisted the Alaska Bureau of Investigation with multiple major crimes and homicides, respond to burglaries, thefts, arsons, and assisted with community-oriented training. This unit consists of one sergeant and two troopers. Uniformed patrol troopers are primarily tasked with responding to crimes in progress and as a result do not have the necessary time to devote to burglary and property crime investigations without incurring significant amounts of overtime or falling further behind with the other investigations they are assigned. The Fairbanks CSU reviews property crime investigations and focuses on significant thefts or cases where crimes appear to be related. Although this unit focus is on property crimes, it also supports other detachment emergencies as needed.

The Fairbanks Rural Unit is comprised of a sergeant and five troopers who service an area the size of Texas, which contains 27 villages. Of those five Troopers, two of them are posted in Galena. The unit has a dedicated single engine visual flight rule aircraft which flew over 30,000 miles in the FY2022. There is a Cessna 172 which is assigned to the Galena Post and works as their primary mode of transportation. A key challenge resulting from the COVID-19 epidemic is a major decrease in charter availability which still affects rural community availability in emergencies. The Rural Unit has been increasing its collaboration with tribal governments and participates in civil diversion in an effort to empower Tribal government to regulate lower-level crime. These Tribal governments oversee two Village Public Safety Officers in the region. The Rural Unit intends to work with Tanana Chief’s Conference to increase the number of Tribal courts in the region which in turn increases the safety of citizens by providing for easier access to Tribal Protective Orders and low-level crime mitigation.

Fairbanks Troopers deployed an information sharing tool known as the Interior Alaska Briefing Board, which connects all dispatchers and members of law enforcement in the Alaska Interior and the Alaska Criminal Intelligence Center to share investigative information.

Housing renovations in Galena were completed which resulted in an increase in morale.

AST Fairbanks has continued developing a strategic partnership with the Tanana Chiefs Conference (TCC) leadership. The “D” Detachment Commander participated in the annual three-day TCC Partnership Boat Ride, which traveled from Ruby to Galena, then to Koyakuk, Nulato and Kaltag, to meet with community members and address concerns.

“D” Detachment aggressively investigates all cases of Missing and Murdered Indigenous People (MMIP) in the Alaska Interior. Due to the distances traveled and the remote locations where these incidents often occur creates significant challenges for investigators and Troopers. Weather, terrain, and the lack of available all-weather air transportation resources add degrees of difficulty to this challenge.

The increased ability for people to reach more remote locations with the advances in recreational transportation and eco-tourism naturally increases the number of Search and Rescues in the Alaska Interior. The A Star helicopter has been a valuable resource in meeting this challenge.

Alaska State Troopers (AST) Director's Office – The director has a major role in implementing statewide law enforcement policy. The director's staff is responsible for administering the division's budget and carrying out policy. Balancing law enforcement service needs of various areas of the state with the very limited number of commissioned officers and resources requires constant review and evaluation.

Under collective bargaining agreements, the director's staff must devote a good deal of time to considering the transfer of individual officers, their educational and career development needs, and their training and discipline. The director must also develop a practice and environment that promotes planning for greater efficiency of processes and more prudent use of public funding.

The director of the AST is also responsible for organizational succession planning through the preparation and mentoring of suitable candidates for higher command positions. The director's office implements new technologies and modern business practices to achieve greater efficiencies, while remaining attentive to the needs of the workforce to maintain productivity and facilitate recruitment and retention.

Key issues facing the AST director's office are human and physical resources and facilities. Performing basic public safety functions across a very large area is extremely challenging. Maintain public trust and security, as well as employee safety, are also an extreme priority. It is a continual balancing act to allocate resources that are directly responsible for responding to calls for service while also ensuring that proactive enforcement activities are implemented. Facilities in many locations are inadequate to support the needs of personnel resources. Several facilities are very old and in need of significant renovation to bring them up to a level of reasonable suitability and put them in a condition to provide a safe and secure office environment.

The most pressing issue is the complex emergency dispatch services. Two of the three primary dispatch centers do not belong to AST. AST contracts with the City of Wasilla to provide dispatch services for the Mat-Su Borough and Copper River Basin and with the Kenai Peninsula Borough for the Kenai Peninsula. These arrangements are not conducive to AST (and the department) providing comprehensive, consistent, standardized dispatch services to citizens and troopers across the state whose safety is the department's responsibility. The department is working towards developing ways that it can standardize workflows around the state while providing the best service possible to Alaskans.

Significant Changes in Results to be Delivered in FY2024

AST continues to aggressively pursue technologies to better capture and collect information and evidence by DPS as members of the public report criminal and suspicious activity. AST will continue to refine business processes and procedures to aide in data collection including the implementation of an online reporting system that the public can utilize to report non-emergency activity to AST. These new programs will enable the division to conduct its duties more efficiently.

AST anticipates providing access to the Alaska Records Management System (ARMS) to other agencies; both state and municipal. This will continue to create significant efficiencies for both DPS and other agencies and will exponentially increase the information-sharing capabilities that Alaska law enforcement will be able to experience. Long term, this will undoubtedly result in more timely identification of offenders as well as the ability to address some of the current trends which affect the public on a statewide basis. This effort was started in FY2014 and will continue into FY2024.

AST will continue its active support of the previously implemented Strategic Highway Safety Plan to reduce the number of serious injury and fatality collisions on Alaska's roadways. This includes proactive enforcement efforts, educational presentations and specialized fatal and serious injury crash investigations.

AST Director: The AST's director's office continues to implement a vision of delivering essential public safety services to the citizens of Alaska with priorities assigned to regions that do not have other public safety agencies in place. Efficiency and effectiveness in delivery of these services are achieved through continual evaluation of business processes that optimize results using existing resources.

AST will continue to implement forward-thinking technology initiatives in its efforts to improve effectiveness.

AST intends to continue efforts to improve responses to major crimes investigations as well as applying resources to further lower the rate of sexual assaults and sexual abuse of minors in Alaska.

Highway safety continues to be a high priority for AST and additional efforts will be expended to secure grant funding to allow for proactive patrols which are conducted solely on overtime by regular patrol personnel.

AST will continue robust State Trooper recruitment and retentions efforts, improving the diversity of commissioned officers and minimizing the inefficiencies and costs associated with non-retirement separations.

AST will be working to convert additional post locations to two-on, two-off posts where appropriate to provide cost savings while enhancing the level of service to those areas.

AST will continue to support the training of Village Public Safety Officers (VPSO) and to highlight the importance of the VPSO program in rural Alaska.

AST will continue efforts to document the state of DPS/AST facilities and the need to repair, replace, or upgrade current facilities.

Statutory and Regulatory Authority

DPS-Powers and duties of department (AS 44.41.020)
State Troopers (AS 18.65.010 - AS 18.65.110)
Police Protection (AS 18.65.010 - AS 18.65.790)
Law enforcement duties (AS 18.65.010 - AS 18.65.086)
Controlled Substances (AS 11.71.010 - AS 11.71.900)
Judicial Services (AS 22.20.100 - AS 22.20.140)
Prisoner Transportation (AS 33.30.071 and AS 33.30.081)
Search & Rescue (AS 18.60.120 - AS 18.60.175)
Village Public Safety Officer Definition (AS 01.10.060(c)(7)(C))
VPSO Program (AS 18.65.670)
VPSO Regulations (13 AAC 96.010-900)
Concealed Handgun Permits (AS 18.65.700)
Security Guard Licensing (AS 18.65.400 - AS 18.65.410)
Sex Offender Registration (AS 12.63.010 - AS 12.63.100)
Central Registry of Sex Offenders (AS 18.65.087)
Department to assist other agencies (AS 18.65.090)
Document and disseminate information regarding homicides (AS 44.41.040)
Document and investigate missing persons (AS 18.65.610)
Investigate fires resulting from crimes (AS 18.70.030)
Investigate sexual assault and child exploitation (AS 18.65.086)
DUI Forfeiture Requirements (AS 28.35.036-.037)
DPS DNA collection and registration requirements (AS 44.41.035)
Duty of Law Enforcement to Provide VCCB information (AS 18.67.175)
Rights of Crime Victims to be notified orally and in writing by Law Enforcement (AS 12.61.010)

Contact Information

Contact: Pam Halloran, Administrative Services Director
Phone: (907) 465-5501
E-mail: pam.halloran@alaska.gov

Alaska State Trooper Detachments Personal Services Information					
Authorized Positions			Personal Services Costs		
	FY2023 Management Plan	FY2024 Governor			
Full-time	360	355	Annual Salaries		39,171,619
Part-time	0	0	COLA		190,138
Nonpermanent	6	6	Premium Pay		5,403,287
			Annual Benefits		24,686,775
			Less 7.44% Vacancy Factor		(5,166,319)
			Lump Sum Premium Pay		970,000
Totals	366	361	Total Personal Services		65,255,500

Position Classification Summary					
Job Class Title	Anchorage	Fairbanks	Juneau	Others	Total
Accounting Technician 1	1	0	0	0	1
Administrative Assistant 1	1	1	0	2	4
Administrative Assistant 2	3	1	0	3	7
Administrative Assistant 3	2	0	0	0	2
Captain DPS	3	1	0	2	6
Court Services Officer	1	10	4	23	38
Criminal Justice Technician 1	2	2	1	9	14
Criminal Justice Technician 2	2	0	0	1	3
Division Director - Px	1	0	0	0	1
Lieutenant DPS	5	2	0	5	12
Mail Services Courier	1	0	0	0	1
Major DPS	2	0	0	0	2
Mental Health Clinician 2	1	0	0	0	1
Office Assistant 2	3	4	1	9	17
Office Assistant 3	0	0	1	12	13
Office Assistant 4	0	1	0	2	3
Procurement Specialist 1	1	0	0	0	1
Program Coordinator 1	1	0	0	0	1
Public Safety Technician 2	1	1	0	3	5
Secretary	1	0	0	0	1
Sergeant DPS	4	7	1	27	39
State Trooper	6	32	4	140	182
State Trooper Recruit	0	0	0	2	2
Training Specialist 2	1	0	0	0	1
Victim/Witness Paralegal 1	0	0	0	1	1
Victim/Witness Paralegal 2	0	1	0	2	3
Totals	43	63	12	243	361

Component Detail All Funds
Department of Public Safety

Component: Alaska State Trooper Detachments (2325)
RDU: Alaska State Troopers (160)

Non-Formula Component

	FY2022 Actuals	FY2023 Conference Committee	FY2023 Authorized	FY2023 Management Plan	FY2024 Governor	FY2023 Management Plan vs FY2024 Governor	
71000 Personal Services	67,199.6	66,226.1	66,237.8	64,013.5	65,255.5	1,242.0	1.9%
72000 Travel	3,607.3	2,440.6	2,440.6	3,750.0	3,899.6	149.6	4.0%
73000 Services	14,028.0	7,383.2	7,752.3	7,813.5	8,419.5	606.0	7.8%
74000 Commodities	948.4	1,160.2	1,160.2	1,130.2	1,523.9	393.7	34.8%
75000 Capital Outlay	158.3	680.2	680.2	680.2	767.2	87.0	12.8%
77000 Grants, Benefits	0.0	0.0	0.0	0.0	0.0	0.0	0.0%
78000 Miscellaneous	0.0	0.0	0.0	0.0	0.0	0.0	0.0%
Totals	85,941.6	77,890.3	78,271.1	77,387.4	79,865.7	2,478.3	3.2%
Fund Sources:							
1004 Gen Fund (UGF)	10,173.1	77,144.6	77,525.4	76,641.7	78,962.8	2,321.1	3.0%
1005 GF/Prgm (DGF)	7.7	100.0	100.0	100.0	253.8	153.8	153.8%
1007 I/A Rcpts (Other)	602.7	565.7	565.7	565.7	569.1	3.4	0.6%
1092 MHTAAR (Other)	73.6	80.0	80.0	80.0	80.0	0.0	0.0%
1271 ARPA Rev R (UGF)	75,084.5	0.0	0.0	0.0	0.0	0.0	0.0%
Unrestricted General (UGF)	85,257.6	77,144.6	77,525.4	76,641.7	78,962.8	2,321.1	3.0%
Designated General (DGF)	7.7	100.0	100.0	100.0	253.8	153.8	153.8%
Other Funds	676.3	645.7	645.7	645.7	649.1	3.4	0.5%
Federal Funds	0.0	0.0	0.0	0.0	0.0	0.0	0.0%
Positions:							
Permanent Full Time	400	366	366	360	355	-5	-1.4%
Permanent Part Time	0	0	0	0	0	0	0.0%
Non Permanent	11	11	11	6	6	0	0.0%

Change Record Detail - Multiple Scenarios with Descriptions
Department of Public Safety

Component: Alaska State Trooper Detachments (2325)
RDU: Alaska State Troopers (160)

Scenario/Change Record Title	Trans Type	Totals	Personal Services	Travel	Services	Commodities	Capital Outlay	Grants, Benefits	Miscellaneous	Positions		NP
										PFT	PPT	
***** Changes From FY2023 Conference Committee To FY2023 Authorized *****												
FY2023 Conference Committee												
	ConfCom	77,890.3	66,226.1	2,440.6	7,383.2	1,160.2	680.2	0.0	0.0	366	0	11
1004 Gen Fund		77,144.6										
1005 GF/Prgm		100.0										
1007 I/A Rcpts		565.7										
1092 MHTAAR		80.0										
Align Authority for Agency-Wide Addition												
	Unalloc	369.1	0.0	0.0	369.1	0.0	0.0	0.0	0.0	0	0	0
1004 Gen Fund		369.1										
Transfer authority from Unallocated Rates Adjustment to distribute additions to the department for agency-wide chargeback rate changes.												
FY2023 Exempt 5% COLA												
	SalAdj	11.7	11.7	0.0	0.0	0.0	0.0	0.0	0.0	0	0	0
1004 Gen Fund		11.7										
FY2023 Exempt 5% COLA: \$11.7												
Subtotal		78,271.1	66,237.8	2,440.6	7,752.3	1,160.2	680.2	0.0	0.0	366	0	11
***** Changes From FY2023 Authorized To FY2023 Management Plan *****												
Transfer Office Assistant 2 (12-1423) to the Alaska Bureau of Investigation for Program Alignment												
	Trout	-87.7	-72.7	0.0	-12.0	-3.0	0.0	0.0	0.0	-1	0	0
1004 Gen Fund		-87.7										
Transfer full-time Office Assistant 2 (12-1423), range 10, located in Anchorage, to the Alaska Bureau of Investigation for program alignment.												
Delete State Troopers (12-N12006, 12-N19003) Due to Expiration and State Trooper (12-N21002) No Longer Needed												
	PosAdj	0.0	0.0	0.0	0.0	0.0	0.0	0.0	0.0	0	0	-3
Delete non-permanent State Troopers (12-N12006, 12-N19003), range 77, located in Anchorage, due to expiration and one non-permanent State Trooper (12-N21002), range 77, located in Anchorage, due to it no longer being needed.												
Transfer Crim Just Tech 1 (12-?174) and Forensic Tech 2 (12-?178) to AK Bureau of Investigation for Program Alignment												
	Trout	-251.7	-213.7	0.0	-28.0	-10.0	0.0	0.0	0.0	-2	0	0
1004 Gen Fund		-251.7										
Transfer full-time Criminal Justice Technician 1 (12-?174), range 12, located in Anchorage, and full-time Forensic Technician 2, range 15, located in Bethel, to the Alaska Bureau of Investigation for program alignment.												

Change Record Detail - Multiple Scenarios with Descriptions
Department of Public Safety

Component: Alaska State Trooper Detachments (2325)
RDU: Alaska State Troopers (160)

Scenario/Change Record Title	Trans Type	Totals	Personal Services	Travel	Services	Commodities	Capital Outlay	Grants, Benefits	Miscellaneous	Positions		NP
										PFT	PPT	
Transfer Victim/Witness Paralegal 2 (12-2120) to Alaska Bureau of Investigation for Program Alignment												
1004 Gen Fund	Trout	-136.9	-121.9	0.0	-12.0	-3.0	0.0	0.0	0.0	-1	0	0
Transfer full-time Victim/Witness Paralegal (12-2120), range 14, located in Bethel, to the Alaska Bureau of Investigation for program alignment.												
Align Authority with Anticipated Expenditures												
	LIT	0.0	-1,448.6	1,309.4	139.2	0.0	0.0	0.0	0.0	0	0	0
Transfer authority from personal services to travel and services for anticipated travel and services costs. The remaining authority is sufficient to cover anticipated expenditures.												
Transfer Program Coordinator 1 (12-3202) to Aircraft Section for Program Alignment												
1004 Gen Fund	Trout	-119.8	-104.8	0.0	-12.0	-3.0	0.0	0.0	0.0	-1	0	0
Transfer full-time Program Coordinator 1 (12-3202), range 18, located in Anchorage, to Aircraft Section for program alignment.												
Transfer Training Specialist 1 (12-#179) to Special Projects for Program Alignment												
1004 Gen Fund	Trout	-48.1	-29.1	0.0	-14.0	-5.0	0.0	0.0	0.0	-1	0	0
Transfer full-time Training Specialist 1 (12-#179), range 16, located in Anchorage, to Special Projects for program alignment.												
Transfer State Troopers (12-N9004, 12-N9007) to the Alaska Bureau of Investigation for Program Alignment												
1004 Gen Fund	Trout	-239.5	-233.5	0.0	0.0	-6.0	0.0	0.0	0.0	0	0	-2
Transfer non-permanent State Troopers (12-N19004, 12-N19007) located in Anchorage, to the Alaska Bureau of Investigation for program alignment.												
Subtotal		77,387.4	64,013.5	3,750.0	7,813.5	1,130.2	680.2	0.0	0.0	360	0	6
***** Changes From FY2023 Management Plan To FY2024 Governor *****												
Transfer Office Assistant 3 (12-#199) from Alaska Bureau of Investigation in Support of AST Post												
1004 Gen Fund	Trin	15.0	0.0	0.0	12.0	3.0	0.0	0.0	0.0	1	0	0
Transfer full-time Office Assistant 3 (12-#199), range 11, located in Anchorage, from Alaska Bureau of Investigation in support of the Juneau Alaska State Troopers Post.												
Transfer 10 Positions to Criminal Justice Information Systems Program for Records Management Support												
	Trout	-1,286.2	-1,136.2	0.0	-120.0	-30.0	0.0	0.0	0.0	-10	0	0

Change Record Detail - Multiple Scenarios with Descriptions
Department of Public Safety

Component: Alaska State Trooper Detachments (2325)
RDU: Alaska State Troopers (160)

Scenario/Change Record Title	Trans Type	Totals	Personal Services	Travel	Services	Commodities	Capital Outlay	Grants, Benefits	Miscellaneous	Positions		
										PFT	PPT	NP

1004 Gen Fund		-1,286.2										
---------------	--	----------	--	--	--	--	--	--	--	--	--	--

The Division of Statewide Services will create a new Records Management Support (RMS) team who will be responsible for National Incident Based Reporting (NIBRS), ARMS/TraCs, and online reporting duties, and will assist detachments with record validation duties. Because each of these units work with components of the ARMS application providing administrative and technical support, all units should be combined under a single program manager to ensure consistency, develop cross-training for improved efficiencies, and to streamline workflows. Currently, the units are managed under two different divisions. By cross-training staff, shared workloads such as record validations or data processing in ARMS can be streamlined which will increase workload capacities; it will also reduce workloads for administrative staff in the detachments to enable them to increase capacity for other Trooper support duties. This will also provide an opportunity for the existing NIBRS staff to diversify duties to lessen the chance for vicarious trauma as the staff are required to thoroughly review case reports to classify crimes.

The following positions are transferred to Criminal Justice Information Systems Program:

ARMS/TraCs:

- Full-time Information System Coordinator (12-1016), range 18, located in Anchorage
- Full-time Criminal Justice Technician 1/2 (12-1299), range 12/14, located in Anchorage
- Full-time Criminal Justice Technician 1/2 (12-1461), range 12/14, located in Anchorage
- Full-time Criminal Justice Technician 1/2 (12-1331), range 12/14, located in Anchorage

Online Reporting Team:

- Full-time Criminal Justice Specialist (12-2118), range 16, located in Ketchikan
- Full-time Criminal Justice Technician 1/2 (12-1488), range 12/14, located in Ketchikan
- Full-time Criminal Justice Technician 1/2 (12-1005), range 12/14, located in Ketchikan
- Full-time Criminal Justice Technician 1/2 (12-2115), range 12/14, located in Ketchikan
- Full-time Criminal Justice Technician 1/2 (12-2116), range 12/14, located in Ketchikan
- Full-time Criminal Justice Technician 1/2 (12-2117), range 12/14, located in Ketchikan

Reverse MH Trust: Crisis Intervention Team and Behavioral Health Training and Program for First Responders

1092 MHTAAR	OTI	-80.0	-80.0	-40.0	-30.0	-5.0	-5.0	0.0	0.0	0.0	0.0	0	0	0
-------------	-----	-------	-------	-------	-------	------	------	-----	-----	-----	-----	---	---	---

This project maintains a critical component of the Trust's disability justice focus area by providing foundational knowledge for law enforcement and first responders on mental health disorders and cognitive impairments, best practices for responding to mental and behavioral health issues, laws centered around Title 47, the state's community behavioral health system to municipal law enforcement, the Alaska State Troopers (AST), and other first responders.

Through this training, the Department of Public Safety (DPS) and the Alaska Police Standards Council (APSC) support first responder behavioral health training and programs for APSC certified municipal and State law enforcement, APSC certified municipal and State correctional officers, APSC certified probation officers, and village police safety officers. This training includes but is not limited to 40 hours of crisis intervention team training that adheres to the nationally recognized Memphis Model that will provide Alaska's first responders with the tools to best respond to calls for service involving persons with mental and behavioral health issues and who may be experiencing a mental health crisis.

FY2024 AlaskaCare Health Insurance Increase - Exempt and Partially Exempt

	SalAdj	1.2	1.2	0.0	0.0	0.0	0.0	0.0	0.0	0.0	0.0	0	0	0
--	--------	-----	-----	-----	-----	-----	-----	-----	-----	-----	-----	---	---	---

Change Record Detail - Multiple Scenarios with Descriptions
Department of Public Safety

Component: Alaska State Trooper Detachments (2325)
RDU: Alaska State Troopers (160)

Scenario/Change Record Title	Trans Type	Totals	Personal Services	Travel	Services	Commodities	Capital Outlay	Grants, Benefits	Miscellaneous	Positions		NP
										PFT	PPT	
1004 Gen Fund		1.2										
FY2024 AlaskaCare health insurance increase for exempt and partially exempt employees from \$1,685 to \$1,793 per member per month.: \$1.2												
FY2024 PERS Rate Adjustment												
	SalAdj	128.3	128.3	0.0	0.0	0.0	0.0	0.0	0.0	0	0	0
1004 Gen Fund		128.0										
1007 I/A Rcpts		0.3										
FY2024 PERS rate adjustment to 25.10%: \$128.3												
FY2024 Salary and Health Insurance Increases												
	SalAdj	226.9	226.9	0.0	0.0	0.0	0.0	0.0	0.0	0	0	0
1004 Gen Fund		223.8										
1007 I/A Rcpts		3.1										
FY2024 Salary and Health Insurance Increases: \$226.9FY2024 GGU cost of living increase 2.5%: \$132.4												
FY2024 SU cost of living increase 1%: \$54.5												
FY2024 AlaskaCare insurance from \$1,685 to \$1,793 per member per month.: \$35.0												
FY2024 GGU health insurance increase from \$1,567.50 to \$1,573.50 per member per month.: \$5.0												
Add Full Funding for New FY2021 Filled Positions												
	Inc	755.9	755.9	0.0	0.0	0.0	0.0	0.0	0.0	0	0	0
1004 Gen Fund		755.9										
Thirty-six new positions were added to Alaska State Troopers in FY2021. These positions were initially funded at approximately 75 percent to account for anticipated delays in recruitment. Some positions filled during the prior legislative session were then fully funded and others funded an additional 12.5 percent.												
This increment is for filled positions only which were not previously fully funded. The cost of the positions can no longer be offset with vacancy savings.												
Fully Fund Sergeant and Four Troopers Added in FY2023												
	Inc	1,280.9	844.9	108.0	205.0	36.0	87.0	0.0	0.0	0	0	0
1004 Gen Fund		1,280.9										
One Sergeant and three Troopers were added in FY2023 without associated funding. The purpose of the increased staffing was to meet the operational capacity of statewide law enforcement services. The cost of the positions can no longer be offset with vacancy savings. This request will provide for personal services, travel, services, commodities, and capital outlay for the position.												

Increase Authority to Address Rising Costs in Equipment and Supplies

Change Record Detail - Multiple Scenarios with Descriptions
Department of Public Safety

Component: Alaska State Trooper Detachments (2325)
RDU: Alaska State Troopers (160)

Scenario/Change Record Title	Trans Type	Totals	Personal Services	Travel	Services	Commodities	Capital Outlay	Grants, Benefits	Miscellaneous	Positions		
										PFT	PPT	NP
1004 Gen Fund	Inc	452.1	0.0	0.0	145.0	307.1	0.0	0.0	0.0	0	0	0

Parts and materials costs have been steadily increasing. There are several contributing factors including limited warehouse space requiring smaller orders, inflation, rising costs for new technology, shortage of materials and labor, and increases to shipping costs related to rising fuel costs.

Tasers: The Department has seen a significant increase in the cost of tasers, primarily due to improved technology. Tasers are procured via a contract that provides for equipment and certification. The current X2 model of tasers costs \$186.2 per year. That contract has ended and the new contract for T7 model tasers is \$331.2 per year. This increase represents \$145.0 per year. Technological advances include 1) optimized close range and an increase in dart distance spreading at close distance. 2) improved device management through a docking station which includes upload of deployment data to be managed by supervisors and download of firmware and device software that ensures the device is up to date with the most recent information, and 3) Improved darts and dart deployment.

Safety Gear and Uniforms: The Department has seen a steady increase in costs for safety equipment, uniforms, among other important gear and equipment items. Between FY2021 and FY2022, safety equipment increased by \$99.2, ballistic vests increased by \$98.3, uniforms increased by \$45.6, outdoor gear increased by \$64.0, for an overall increase of \$307.1.

Transition to Digital Evidence Management Software for Online Evidence Management

1004 Gen Fund	Inc	300.0	0.0	0.0	300.0	0.0	0.0	0.0	0.0	0	0	0
---------------	-----	-------	-----	-----	-------	-----	-----	-----	-----	---	---	---

The Department has a digital evidence problem with limited standardization for digital evidence collection, storage, redaction, sharing and disposal. Evidence is currently stored in a physical format and locked away in evidence facilities spread throughout the state. Digital evidence is part of every criminal investigation, and current practices are antiquated and extremely slow.

Moving to an online Software-as-a-Service solution for digital evidence management can help standardize many digital evidence processes, eliminate manual methods of collecting and sharing evidence, and bring evidence to a central repository.

The software will save significant State Trooper time and eliminate the need to burn media files to CD's/DVD's/USB's/hard drives and then package the evidence and physically take it to an evidence location.

Add Training Specialist to Expand Training Options and Meet Professional Police Training Demands

1005 GF/Prgm	Inc	153.8	116.8	20.0	16.0	1.0	0.0	0.0	0.0	1	0	0
--------------	-----	-------	-------	------	------	-----	-----	-----	-----	---	---	---

Add a full-time Training Specialist 2 (12-#053), range 18, located in Anchorage, to expand training options and meet professional police training demands. The department's Advanced Training Unit (ATU) provides professional, effective, and standardized quality field training to 480 staff within Alaska State Troopers, Alaska Wildlife Troopers, and Fire & Life Safety. The ATU provides recurring in-service training and other training courses for the department statewide.

Given the current number of ATU instructors, the unit can provide 14 (one-week) in-service sessions (20 students per session) each year, resulting in 520 training hours. It would take 24 in-service sessions to complete one full cycle of 480 commissioned personnel. In addition to the in-service sessions, other three-to-five-day courses are also offered in the field several times per year. Additionally, ATU also assists the Training Academy with guest instructors during the firearms and control tactics training classes. The number of hours required to complete those additional training courses is 992 training hours. Core training hours

Change Record Detail - Multiple Scenarios with Descriptions
Department of Public Safety

Component: Alaska State Trooper Detachments (2325)

RDU: Alaska State Troopers (160)

Scenario/Change Record Title	Trans Type	Totals	Personal Services	Travel	Services	Commodities	Capital Outlay	Grants, Benefits	Miscellaneous	Positions		
										PFT	PPT	NP
<p>add up to 1,512 hours or 189 days where the unit provides in-service training. Additional training provided equates to more than 215 out of the 250 workdays per year. Based on the number of hours/days the unit is teaching, instructing, assisting, and traveling, the current unit size is not adequate to support the demands of the department. Additional discretionary time is needed to support instructor certification courses and continuing education for the unit, mandatory personal leave, and time off to decompress and take care of their wellbeing while spending quality family time.</p> <p>This increase allows for:</p> <ul style="list-style-type: none"> • The scheduling of more training sessions to meet the demands of the public with professional police training. • The dedication of more time to identify training needs, hazards encountered in performing their duties, retention rates, and analysis of officer safety issues. • The collection of injury and use of force data to reduce department liability. • The development and delivery of virtual training. • The compilation and maintenance of a statewide certification database. • The avoidance of burnout of instructor staff and employees while increasing overall wellbeing. • A succession plan for the unit to continue with its mission while preparing the new instructors for the next phase. • Coordination with the Alaska Police Standards Council and other training/instructor-level resources. 												
Add Public Safety Technician 2 (12-#049) for Asset Management												
1004 Gen Fund	Inc	102.2	85.2	0.0	16.0	1.0	0.0	0.0	0.0	1	0	0

Add full-time Public Safety Technician 2 (12-#049), range 11, located in Fairbanks, for asset management. The work that will be assigned to this position is either not currently being performed or is being performed by state troopers located in Fairbanks. With the Public Safety Technician 2, troopers stationed in Fairbanks will be able to focus on their law enforcement duties and this position will assist them in the in prevention of violation and the enforcement of laws and regulations. This will increase the effectiveness of troopers and enhance their safety in the field.

This position is essential to the safety and effectiveness of state troopers in the field. It will support and assist State Troopers with non-enforcement tasks, including the following:

- Maintenance on AST ATV's, snowmachines, boats, and trailers.
- Transport, care, and handling of AST ATV's, snowmachines, boats, and trailers.
- Operational assistance with ATV's, snowmachines, boats, and trailers.
- Construction projects and maintenance in support of SERT, Evidence, and Training (Breaching façade, incinerator, training aids, etc.)
- Equipment inventory, storage management, and upkeep of both.
- Packaging, shipping, retrieving, and delivering supplies, evidence, equipment, etc. (Goldstreak, mail, span Alaska, surface transport to Anchorage)
- Vehicle fleet assistance (ferrying vehicles to DOT, specialty shops, and assistance with vehicle fleet upkeep).
- Providing regular shuffling of vehicles in the parking lot for wintertime snow clearing and battery maintenance.
- Assisting patrol and rural outposts with the transport of evidence and other large items to and from the field.
- Ensuring adequate stocks of fire extinguishers, road flares, and sandbags are available in the garage.
- Provide assistant to evidence room staff.
- Providing assistance to the Fairbanks Criminal Suppression Unit in bait operations.
- Assisting rural outposts with cultural camps and other community related events.
- Assisting administrative staff with the collection of mileage from pool vehicles, and the counting and documenting of supplies maintained.

Change Record Detail - Multiple Scenarios with Descriptions
Department of Public Safety

Component: Alaska State Trooper Detachments (2325)
RDU: Alaska State Troopers (160)

Scenario/Change Record Title	Trans Type	Totals	Personal Services	Travel	Services	Commodities	Capital Outlay	Grants, Benefits	Miscellaneous	Positions		NP
										PFT	PPT	
Add Criminal Justice Technician 1/2 (12-#059) for Statewide Evidence Entry												
1004 Gen Fund	Inc	112.6	95.6	0.0	16.0	1.0	0.0	0.0	0.0	1	0	0
<p>Add a full-time Criminal Justice Technician 1/2 (12-#059), range 12/14, located in Anchorage for statewide evidence entry. The Department currently maintains evidence facilities of varying sizes and complexity across the state. Some posts have temporary holding areas only and evidence is hand carried or shipped to full time evidence rooms in larger, regional hubs. Courts routinely distribute large volumes of documents requiring entry, auditing, and upkeep to include writs, protective orders, subpoenas, warrants and prisoner transport orders.</p> <p>Maintaining consistent evidence entry is impossible with current staffing levels. A new Criminal Justice Technician position is needed to meet evidence handling procedures and policies. Tasks of the new position include facilitating consistent training and oversight, coordination and assistance with required audits to prevent loss items or theft, ensuring evidence compliance, oversight of evidence storage, and assistance with coverage, and occasional temporary duty assignment (TDY) during staff shortages. The position would also serve as a trainer in court document entry and audits and assist detachment wide with these tasks.</p> <p>Without a new Criminal Justice Technician, the following activities would be significantly hindered, or would need to be handled by troopers or sergeants: evidence room inspections; annual audits of firearms, controlled substances and money; coverage for vacant positions and annual leave; timely and consistent training for new administrative and commissioned employees; and witness to evidence room cleanup and destruction. The position is necessary for the Department to work within its own policy and best practices. There could potentially be far reaching consequences in the case of legal proceedings such as trials and evidence hearings.</p>												
Add Mental Health Clinician 2 (12-#058) to Expand Wellness Program												
1004 Gen Fund	Inc	162.0	123.4	21.6	16.0	1.0	0.0	0.0	0.0	1	0	0
<p>Add a full-time Mental Health Clinician 2 (12#058), range 19, located in Anchorage, to expand the wellness program. The stressors that law enforcement officers face can have serious implications for overall health, wellness, and staff retention. Direct and indirect exposure to trauma can negatively impact services delivered to Alaskans, which takes its toll on the department's workforce and is a contributor to absences and turnover. The department established a wellness program in 2019 within the Advanced Training Unit and this new position will provide a professional level of experience and education that the unit lacks. A new Mental Health Clinician will provide professional support by providing general mental health and consultative services and therapeutic treatment services department staff; making referrals and arrangements for members needing hospitalization or psychiatric care; providing post-in-patient treatment follow-up care; provide supportive crisis intervention following traumatic events; assisting with the department wellness program in providing training, and monthly wellness articles; visiting outlying posts to provide counseling and consultation to members; hosting conferences and training sessions with community mental health personnel to assist in expanding the understanding of mental and emotional problems; collecting data to determine department needs, attitudes, and resources, and acting as liaison with other social service agencies, courts, and psychiatric facilities.</p> <p>Without this new position the department will lack a staff member that can be proactive and provide timely counseling, traumatic event debriefing, and post traumatic event intervention. The result will be extensive staff turnover, office outages, and referrals to costly outside contractors.</p>												
Startup Costs for New Positions												
1004 Gen Fund	IncOTI	73.6	0.0	0.0	0.0	73.6	0.0	0.0	0.0	0	0	0

Change Record Detail - Multiple Scenarios with Descriptions
Department of Public Safety

Component: Alaska State Trooper Detachments (2325)
RDU: Alaska State Troopers (160)

Scenario/Change Record Title	Trans Type	Totals	Personal Services	Travel	Services	Commodities	Capital Outlay	Grants, Benefits	Miscellaneous	Positions		
										PFT	PPT	NP
Startup costs for four new civilian positions (\$18.4/ea) include commodities to set up a workstation (\$6.0), and workstation build or reconfiguration of existing space (\$12.4) including office chair, desk, cubicle, etc.												
MH Trust: Crisis Intervention Team and Behavioral Health Training and Program for First Responders (FY21-FY25)												
1092 MHTAAR	IncT	80.0	40.0	30.0	5.0	5.0	0.0	0.0	0.0	0	0	0
This project maintains a critical component of the Trust's Disability Justice focus area by providing foundational knowledge for law enforcement and first responders on mental health disorders and cognitive impairments, best practices for responding to mental and behavioral health issues, laws centered around title 47, and the state's community behavioral health system to municipal law enforcement, the Alaska State Troopers (AST), and other first responders. The funding enables the Department of Public Safety (DPS) and the Alaska Police Standards Council (APSC) to support first responder behavioral health training and programs for APSC certified municipal and state law enforcement, APSC certified municipal and state correctional officers, APSC certified probation officers, and village police officers to include but not limited to 40 hours of Crisis Intervention Team training that adheres to the nationally recognized Memphis Model that will provide Alaska's first responders with the tools to best respond to calls for service involving persons with mental and behavioral health issues and who may be experiencing a mental health crisis thus, providing greater public protection and keeping Alaskans safe.												
Totals		79,865.7	65,255.5	3,899.6	8,419.5	1,523.9	767.2	0.0	0.0	355	0	6

Line Item Detail (1676)
Department of Public Safety
Travel

Component: Alaska State Trooper Detachments (2325)

Line Number	Line Name		FY2022 Actuals	FY2023 Management Plan	FY2024 Governor
2000	Travel		3,607.3	3,750.0	3,899.6
Object Class	Servicing Agency	Explanation	FY2022 Actuals	FY2023 Management Plan	FY2024 Governor
2000 Travel Detail Totals			3,607.3	3,750.0	3,899.6
2000	In-State Employee Travel	In-state travel for routine patrol, post visits, training courses for officers, remote area patrol, investigations, special field assignments, transportation for witness appearances, and expert testimony in court.	1,426.2	1,150.0	1,299.6
2001	In-State Non-Employee Travel	In-state non-employee travel for routine patrol, post visits, training courses for officers, remote area patrol, investigations, special field assignments, transportation for witness appearances, and expert testimony in court.	136.2	200.0	200.0
2002	Out of State Employee Travel	Out-of-state travel primarily for training courses, conferences, and seminars for law enforcement officers. Specific events include polygraph use training, FBI National Academy, Southern Police Institute, homicide school, intoximeter instruction, radar instruction, International Chiefs of Police conference, and other similar law enforcement seminars. Non-employee travel includes transportation costs for witness appearances, expert testimony, and trainers' travel.	145.6	300.0	300.0
2003	Out of State Non-Employee Travel	Non-employee travel outside of the	5.9	200.0	200.0

Line Item Detail (1676)
Department of Public Safety
Travel

Component: Alaska State Trooper Detachments (2325)

Object Class	Servicing Agency	Explanation	FY2022 Actuals	FY2023 Management Plan	FY2024 Governor
2000 Travel Detail Totals			3,607.3	3,750.0	3,899.6
2005	Moving Costs	state Moving costs for the entire division of Alaska State Troopers are budgeted in this component. This includes shipment of household goods, per diem, airfare, and temporary lodging costs for transfers of commissioned officers, new recruits and their families.	1,890.0	1,900.0	1,900.0
2006	Other Travel Costs	Travel expenses	3.4	0.0	0.0

Line Item Detail (1676)
Department of Public Safety
Services

Component: Alaska State Trooper Detachments (2325)

Line Number	Line Name		FY2022 Actuals	FY2023 Management Plan	FY2024 Governor
3000	Services		14,028.0	7,813.5	8,419.5
Object Class	Servicing Agency	Explanation	FY2022 Actuals	FY2023 Management Plan	FY2024 Governor
3000 Services Detail Totals			14,028.0	7,813.5	8,419.5
3000	Education Services	Registration/tuition for employee development seminars, required law enforcement training, rifle range fees to meet yearly qualifications, and membership in law enforcement organizations.	132.7	250.0	250.0
3001	Financial Services	Interest income, penalties and fines.	1.2	1.3	1.3
3002	Legal and Judicial Services	Transcription services and case costs.	2.5	3.0	3.0
3003	Information Technology	Contracts with information technology firms to assist in data collection/reporting and software maintenance. Consulting services and software licenses for technology projects. Microsoft Exchange & ARMS Maintenance Agreement.	144.3	195.0	195.0
3004	Telecommunications	Long distance, local, cellular, basic equipment purchases, and satellite phones.	591.0	600.0	600.0
3005	Health Services	Medical services for employees (physicals/fit for duty exams) and non-employees (while in custody). Medical costs including sexual assault exams; emergency room care; psychological evaluations and drug screening for trooper and court service officer recruits; and biannual fitness-for-duty physicals for law	674.4	700.0	700.0

Line Item Detail (1676)
Department of Public Safety
Services

Component: Alaska State Trooper Detachments (2325)

Object Class	Servicing Agency	Explanation	FY2022 Actuals	FY2023 Management Plan	FY2024 Governor
3000 Services Detail Totals			14,028.0	7,813.5	8,419.5
		enforcement per unit contracts.			
3006	Delivery Services	Postage, freight, and courier service.	111.6	112.0	112.0
3007	Advertising and Promotions	Advertising for recruitment job fair newspaper ads. Promotional items for recruitment efforts and employee recognition.	139.7	140.0	140.0
3008	Utilities	Utility costs for trooper posts, storage, and offices including natural gas, heating oil, electricity, water and sewer, and waste disposal. Including other disposal and shredding services.	362.7	400.0	400.0
3009	Structure/Infrastructure/Land	Janitorial services, snow removal, lawn care, rentals and leases for copiers, office equipment, driving under the influence-related (DUI) towing services, DUI storage lots, evidence storage, and room rentals for training officers.	210.1	250.0	250.0
3010	Equipment/Machinery	Repair and maintenance of law enforcement equipment, marine equipment, snow machines and four-wheelers, computers and copiers, office and phone, radio and law enforcement equipment. Rental and leases for office equipment, law enforcement equipment, aircraft, and vehicles.	118.7	120.0	120.0
3011	Other Services	Contracts for special services, prisoner transport, guard hires, clerical support with local police departments. Also includes printing, copier services, honorariums for presenters/trainers, interpreter services, K9 units, and	4,089.6	210.0	816.0

Line Item Detail (1676)
Department of Public Safety
Services

Component: Alaska State Trooper Detachments (2325)

Object Class	Servicing Agency	Explanation	FY2022 Actuals	FY2023 Management Plan	FY2024 Governor
3000 Services Detail Totals			14,028.0	7,813.5	8,419.5
		commissioned sales for the State Travel Office.			
3017	Inter-Agency Information Technology Non-Telecommunications	Non-telecommunication (mainframe, computer support, sponsored agencies, and VPN).	97.4	0.0	0.0
3017	Inter-Agency Information Technology Non-Telecommunications	Admin - Department-wide (Dept) OIT Core Services, Server Hosting, MICS, SQL Licensing, Microsoft Licensing, Adobe.	899.2	1,500.0	1,500.0
3017	Inter-Agency Information Technology Non-Telecommunications	PubSaf - Information Systems (3199) Non-telecommunications (LAN/WAN & APSIN).	0.0	137.0	137.0
3018	Inter-Agency Information Technology Telecommunications	Telecommunications enterprise productivity rate.	171.1	0.0	0.0
3018	Inter-Agency Information Technology Telecommunications	Admin - Department-wide Telecommunications (EPR & Basic Phone).	-5.6	68.2	68.2
3018	Inter-Agency Information Technology Telecommunications	Courts - Department-wide RSA with Alaska Court Systems (ACS) for recurring connection costs for the Video Arraignment system	0.0	25.0	25.0
3018	Inter-Agency Information Technology Telecommunications	Trans - Department-wide RSA with DOTPF for two-way radio system repairs and maintenance.	0.0	74.0	74.0
3020	Inter-Agency Building Maintenance	Trans - Department-wide DPS Tudor Complex building and yard maintenance. RSAs with ADOTPF for maintenance of state-owned facilities/buildings (ADOTPF's Central, Northern, and Southeast Regions).	339.0	452.0	452.0
3021	Inter-Agency Mail	Admin - Department-wide (Dept) Central mail service	23.8	10.0	10.0
3021	Inter-Agency Mail	PubSaf - AST Detachments (2325) DPS headquarters mail room services.	0.0	2.0	2.0
3022	Inter-Agency Human Resources	Admin - Department-wide HR Personnel support.	0.0	400.0	400.0
3023	Inter-Agency Building Leases	State-owned building leases	1,449.9	0.0	0.0
3023	Inter-Agency Building Leases	Admin - Department-wide Lease costs for AST facilities and lease administration costs charged	0.0	650.3	650.3

Line Item Detail (1676)
Department of Public Safety
Services

Component: Alaska State Trooper Detachments (2325)

Object Class		Servicing Agency	Explanation	FY2022 Actuals	FY2023 Management Plan	FY2024 Governor
			3000 Services Detail Totals	14,028.0	7,813.5	8,419.5
			by DOA.			
3023	Inter-Agency Building Leases	Courts - Department-wide	Leases with other state agencies (Nenana Courts, Dimond Court Lease, Lease Administration).	0.0	58.2	58.2
3023	Inter-Agency Building Leases	M&VA - Department-wide	RSAs with DMVA, Army Guard Facilities Maintenance, for lease costs, utilities, and maintenance services for the Nome and Kotzebue Armories, Emmonak and Selawik Posts, and for Nenana sub lease.	0.0	610.0	610.0
3023	Inter-Agency Building Leases	Trans - Department-wide	Reimbursement to DOTPF for the costs of airport leases and tie-downs.	115.0	0.0	0.0
3026	Inter-Agency Insurance		Risk management for property and overhead insurance.	122.0	0.0	0.0
3026	Inter-Agency Insurance	Admin - Department-wide	Risk management for property and overhead insurance.	0.0	107.0	107.0
3027	Inter-Agency Financial	Admin - Department-wide	State accounting and payroll system costs (I/A transfer to DOA, Finance). IRIS HRM/ ALDER/ IRIS financial support.	106.7	139.2	139.2
3028	Inter-Agency Americans with Disabilities Act Compliance	Admin - Department-wide	Americans with Disabilities Act funding (I/A transfer to DOA, Personnel).	3.6	3.0	3.0
3029	Inter-Agency Education/Training	Admin - Department-wide	State provided training.	0.3	0.0	0.0
3029	Inter-Agency Education/Training	PubSaf - Training Academy (524)	RSA with DPS Academy for Alaska Law Enforcement Training.	301.0	300.0	300.0
3029	Inter-Agency Education/Training	Univ - Department-wide	RSA with the University of Alaska Southeast for the Alaska Law Enforcement Training (ALET) academy.	0.0	284.3	284.3
3036	Inter-Agency Safety		Interagency safety services	21.2	0.0	0.0

Line Item Detail (1676)
Department of Public Safety
Services

Component: Alaska State Trooper Detachments (2325)

Object Class		Servicing Agency	Explanation	FY2022 Actuals	FY2023 Management Plan	FY2024 Governor
3000 Services Detail Totals				14,028.0	7,813.5	8,419.5
3036	Inter-Agency Safety	Trans - Department-wide	Radar Recertification	0.7	12.0	12.0
3037	State Equipment Fleet	Trans - Department-wide	State Equipment Fleet costs, such as, fuel, fixed costs for asset maintenance, maintenance and repair services not included as a fixed asset cost, fixed cost services for equipment replacement, unallowable grant expenses, and repairs and maintenance services due to accident damage.	3,166.0	0.0	0.0
3037	State Equipment Fleet	Trans - Department-wide	State Equipment Fleet vehicle leasing and maintenance.	-14.2	0.0	0.0
3038	Inter-Agency Management/Consulting		Interdepartmental service contracts.	652.4	0.0	0.0

Line Item Detail (1676)
Department of Public Safety
Commodities

Component: Alaska State Trooper Detachments (2325)

Line Number	Line Name		FY2022 Actuals	FY2023 Management Plan	FY2024 Governor
4000	Commodities		948.4	1,130.2	1,523.9
Object Class	Servicing Agency	Explanation	FY2022 Actuals	FY2023 Management Plan	FY2024 Governor
4000 Commodities Detail Totals			948.4	1,130.2	1,523.9
4000	Business	Business, office, photographic, computer supplies and educational subscriptions for law enforcement manuals.	241.2	250.0	643.7
4001	Agricultural	Soil and fertilizer.	0.0	0.0	0.0
4002	Household/Institutional	Clothing, uniforms, cleaning, food and non-food supplies. Such as uniforms for commissioned officers, accident victim blankets, evidence bags, body bags, latex examination gloves, law enforcement forms, and drug testing kits.	217.5	246.5	246.5
4003	Scientific and Medical	Laboratory, scientific, and medical supplies.	22.8	30.0	30.0
4004	Safety	Law enforcement supplies, communications, ammunition, gun cleaning supplies, protective vests, first aid supplies, road flares, and other safety supplies.	214.8	350.0	350.0
4005	Building Materials	Building materials.	5.3	5.0	5.0
4006	Signs and Markers	One-time sign purchase.	1.7	2.0	2.0
4011	Electrical	Minor electrical purchases.	0.2	0.5	0.5
4013	Lube Oils/Grease/Solvents	Lube oils, grease, solvents for law enforcement equipment such as snowmachines.	0.3	0.5	0.5
4014	Bottled Gas	Bottled gas.	0.5	0.5	0.5

Line Item Detail (1676)
Department of Public Safety
Commodities

Component: Alaska State Trooper Detachments (2325)

Object Class	Servicing Agency	Explanation	FY2022 Actuals	FY2023 Management Plan	FY2024 Governor
4000 Commodities Detail Totals			948.4	1,130.2	1,523.9
4015	Parts and Supplies	Parts and supplies used to repair and maintain equipment. Minor maintenance and repair supplies for state facilities including signs, plumbing and electrical supplies, janitorial supplies, and paint. Fuel for airplanes, helicopters, boats, snow machines, and all-terrain vehicles.	231.3	232.0	232.0
4016	Paint/Preservatives	Paint and preservatives.	0.3	0.5	0.5
4017	Sand	Sanding of walkways and/or parking areas for safety.	0.7	0.7	0.7
4019	Small Tools/Minor Equipment	Small Tools and minor equipment supplies used to repair and maintain equipment. Minor maintenance and repair supplies for state facilities including signs, plumbing and electrical supplies, janitorial supplies, and paint.	3.9	4.0	4.0
4020	Equipment Fuel	Fuel for equipment, airplanes, helicopters, boats, snow machines, and all-terrain vehicles.	7.9	8.0	8.0

Line Item Detail (1676)
Department of Public Safety
Capital Outlay

Component: Alaska State Trooper Detachments (2325)

Line Number	Line Name		FY2022 Actuals	FY2023 Management Plan	FY2024 Governor
5000	Capital Outlay		158.3	680.2	767.2
Object Class	Servicing Agency	Explanation	FY2022 Actuals	FY2023 Management Plan	FY2024 Governor
5000 Capital Outlay Detail Totals			158.3	680.2	767.2
5004	Equipment	Law enforcement safety equipment such as diving equipment, ammunition, tasers, K9 equipment, transportation equipment, communication and IT equipment, and undercover surveillance equipment used in support of law enforcement activities. Actuals expenses are greater due to one-time year-end purchases.	158.3	680.2	767.2

Revenue Detail (1681)
Department of Public Safety

Component: Alaska State Trooper Detachments (2325)

Revenue Type (OMB Fund Code) Revenue Source	Component	Comment	FY2022 Actuals	FY2023 Management Plan	FY2024 Governor
5005 GF/Prgm (1005 GF/Prgm)			7.7	100.0	253.8
5108 Program Receipts General Government - Charges for Services		Collection of fees for Alaska Records Management System and Fines, Forfeitures, Judgments and settlements, and collection of public records fees.	7.7	100.0	253.8
5007 I/A Rcpts (1007 I/A Rcpts)			602.7	565.7	569.1
5301 Inter-Agency Receipts		Unallocated IA Receipt authority. Historically DPS AST Detachments receives request for services from other agencies for dispatch services, patrols, overtime enforcement activities, and misc. training, and other services.	598.4	510.8	514.2
5301 Inter-Agency Receipts	Admin - Department-wide	Reimbursable service agreement with Department of Administration	0.0	0.0	0.0
5301 Inter-Agency Receipts	NatRes - Department-wide	Interagency agreement for overtime enforcement of the Knik River Public Use Area.	0.0	0.0	0.0
5301 Inter-Agency Receipts	PubSaf - Administrative Services (525)	Interagency Authority for AST Detachment Services (DPS Mailroom).	0.0	0.5	0.5
5301 Inter-Agency Receipts	PubSaf - AK Fire Standards Council (2428)	Interagency Authority for AST Detachment Services (DPS Mailroom).	0.0	1.4	1.4
5301 Inter-Agency Receipts	PubSaf - AK W-life Troopers Aircraft Sect (492)	Interagency Authority for AST Detachment Services (DPS Mailroom).	0.0	3.5	3.5
5301 Inter-Agency Receipts	PubSaf - AK W-life Troopers Marine Enforc (493)	Interagency Authority for AST Detachment Services (DPS Mailroom).	0.0	1.0	1.0
5301 Inter-Agency Receipts	PubSaf - Alaska Bureau of Highway Patrol (3073)	Interagency Authority for AST Detachment Services (DPS Mailroom).	0.0	0.3	0.3
5301 Inter-Agency Receipts	PubSaf - Alaska Bureau of	Interagency Authority for AST	0.0	3.0	3.0

Revenue Detail (1681)
Department of Public Safety

Component: Alaska State Trooper Detachments (2325)

Revenue Type (OMB Fund Code) Revenue Source	Component	Comment	FY2022 Actuals	FY2023 Management Plan	FY2024 Governor
	Investigation (2744)	Detachment Services (DPS Mailroom).			
5301 Inter-Agency Receipts	PubSaf - Alaska Wildlife Troopers (2746)	Interagency Authority for AST Detachment Services (DPS Mailroom).	0.0	2.3	2.3
5301 Inter-Agency Receipts	PubSaf - AST Detachments (2325)	Interagency Authority for AST Detachment Services (DPS Mailroom).	0.0	16.1	16.1
5301 Inter-Agency Receipts	PubSaf - Commissioner's Office (523)	Interagency Authority for AST Detachment Services (DPS Mailroom).	0.0	0.6	0.6
5301 Inter-Agency Receipts	PubSaf - Crim Just Information Systems (3200)	Interagency Authority for AST Detachment Services (DPS Mailroom).	0.0	10.0	10.0
5301 Inter-Agency Receipts	PubSaf - Fire and Life Safety (3051)	Interagency Authority for AST Detachment Services (DPS Mailroom).	0.0	1.4	1.4
5301 Inter-Agency Receipts	PubSaf - Information Systems (3199)	Interagency Authority for AST Detachment Services (DPS Mailroom).	0.0	0.3	0.3
5301 Inter-Agency Receipts	PubSaf - Special Projects (1001)	Interagency Authority for AST Detachment Services (DPS Mailroom).	0.0	2.5	2.5
5301 Inter-Agency Receipts	PubSaf - SW Drug and Alcohol Enforcement (3052)	Interagency Authority for AST Detachment Services (DPS Mailroom).	0.0	0.3	0.3
5301 Inter-Agency Receipts	PubSaf - Village Public Safety Officer Pg (3047)	Interagency Authority for AST Detachment Services (DPS Mailroom).	-2.9	4.5	4.5
5301 Inter-Agency Receipts	Rev - Department-wide	DPS Inter-agency RSA for ARMS Case Management system.	7.2	7.2	7.2
5061 CIP Rcpts (1061 CIP Rcpts)			0.0	0.0	0.0
5351 Capital Improvement Project Inter-Agency		Unallocated CIP Receipt Authority.	0.0	0.0	0.0
5351 Capital Improvement Project Inter-Agency	Trans - Department-wide	CIP RSA for 511 Management Center (511 MC) Reporting System	0.0	0.0	0.0

Revenue Detail (1681)
Department of Public Safety

Component: Alaska State Trooper Detachments (2325)

Revenue Type (OMB Fund Code) Revenue Source	Component	Comment	FY2022 Actuals	FY2023 Management Plan	FY2024 Governor
		with DOTPF. RSA was discontinued in October 2019.			
6004 Gen Fund (1004 Gen Fund)			95.0	0.0	0.0
6003 General Fund Pblc Prtctn - Miscellaneous Fines/Forfeitures		DUI forfeiture	73.8	0.0	0.0
6004 General Fund Public Protection - Judgement Settlemnt		Judgement Settlement.	20.9	0.0	0.0
6044 General Fund - Jury & Worker's Compensation Recovery		Jury and Worker's Compensation Recovery.	0.3	0.0	0.0
6046 General Fund - Prior Year Reimbursement Recovery		Prior Year Reimbursement Recovery.	0.0	0.0	0.0
6092 MHTAAR (1092 MHTAAR)			0.0	80.0	80.0
6691 Mental Health Trust Auth Auth Rec - Miscellaneous		Mental health trust revenue for Crisis Intervention Training.	0.0	80.0	80.0

Inter-Agency Services (1682)
Department of Public Safety

Component: Alaska State Trooper Detachments (2325)

				FY2022 Actuals	FY2023 Management Plan	FY2024 Governor
Component Totals				4,935.5	4,832.2	4,832.2
With Department of Administration				1,028.0	2,877.7	2,877.7
With Department of Public Safety				301.0	439.0	439.0
With Judiciary				0.0	83.2	83.2
With Department of Transportation/Public Facilities				3,606.5	538.0	538.0
With Department of Military and Veterans' Affairs				0.0	610.0	610.0
With University of Alaska				0.0	284.3	284.3
Object Class	Servicing Agency	Explanation		FY2022 Actuals	FY2023 Management Plan	FY2024 Governor
3017	Inter-Agency Information Technology Non-Telecommunications	Admin - Department-wide (Dept) OIT Core Services, Server Hosting, MICS, SQL Licensing, Microsoft Licensing, Adobe.		899.2	1,500.0	1,500.0
3017	Inter-Agency Information Technology Non-Telecommunications	PubSaf - Information Systems (3199) Non-telecommunications (LAN/WAN & APSIN).		0.0	137.0	137.0
3018	Inter-Agency Information Technology Telecommunications	Admin - Department-wide Telecommunications (EPR & Basic Phone).		-5.6	68.2	68.2
3018	Inter-Agency Information Technology Telecommunications	Courts - Department-wide RSA with Alaska Court Systems (ACS) for recurring connection costs for the Video Arraignment system		0.0	25.0	25.0
3018	Inter-Agency Information Technology Telecommunications	Trans - Department-wide RSA with DOTPF for two-way radio system repairs and maintenance.		0.0	74.0	74.0
3020	Inter-Agency Building Maintenance	Trans - Department-wide DPS Tudor Complex building and yard maintenance. RSAs with ADOTPF for maintenance of state-owned facilities/buildings (ADOTPF's Central, Northern, and Southeast Regions).		339.0	452.0	452.0
3021	Inter-Agency Mail	Admin - Department-wide (Dept) Central mail service		23.8	10.0	10.0
3021	Inter-Agency Mail	PubSaf - AST Detachments (2325) DPS headquarters mail room services.		0.0	2.0	2.0
3022	Inter-Agency Human Resources	Admin - Department-wide HR Personnel support.		0.0	400.0	400.0

Inter-Agency Services (1682)
Department of Public Safety

Component: Alaska State Trooper Detachments (2325)

Object Class		Servicing Agency	Explanation	FY2022 Actuals	FY2023 Management Plan	FY2024 Governor
3023	Inter-Agency Building Leases	Admin - Department-wide	Lease costs for AST facilities and lease administration costs charged by DOA.	0.0	650.3	650.3
3023	Inter-Agency Building Leases	Courts - Department-wide	Leases with other state agencies (Nenana Courts, Dimond Court Lease, Lease Administration).	0.0	58.2	58.2
3023	Inter-Agency Building Leases	M&VA - Department-wide	RSAs with DMVA, Army Guard Facilities Maintenance, for lease costs, utilities, and maintenance services for the Nome and Kotzebue Armories, Emmonak and Selawik Posts, and for Nenana sub lease.	0.0	610.0	610.0
3023	Inter-Agency Building Leases	Trans - Department-wide	Reimbursement to DOTPF for the costs of airport leases and tie-downs.	115.0	0.0	0.0
3026	Inter-Agency Insurance	Admin - Department-wide	Risk management for property and overhead insurance.	0.0	107.0	107.0
3027	Inter-Agency Financial	Admin - Department-wide	State accounting and payroll system costs (I/A transfer to DOA, Finance). IRIS HRM/ ALDER/ IRIS financial support.	106.7	139.2	139.2
3028	Inter-Agency Americans with Disabilities Act Compliance	Admin - Department-wide	Americans with Disabilities Act funding (I/A transfer to DOA, Personnel).	3.6	3.0	3.0
3029	Inter-Agency Education/Training	Admin - Department-wide	State provided training.	0.3	0.0	0.0
3029	Inter-Agency Education/Training	PubSaf - Training Academy (524)	RSA with DPS Academy for Alaska Law Enforcement Training.	301.0	300.0	300.0
3029	Inter-Agency Education/Training	Univ - Department-wide	RSA with the University of Alaska Southeast for the Alaska Law Enforcement Training (ALET) academy.	0.0	284.3	284.3
3036	Inter-Agency Safety	Trans - Department-wide	Radar Recertification	0.7	12.0	12.0
3037	State Equipment Fleet	Trans - Department-wide	State Equipment Fleet costs, such as, fuel, fixed costs for asset maintenance, maintenance and	3,166.0	0.0	0.0

Inter-Agency Services (1682)
Department of Public Safety

Component: Alaska State Trooper Detachments (2325)

Object Class	Servicing Agency	Explanation	FY2022 Actuals	FY2023 Management Plan	FY2024 Governor
3037 State Equipment Fleet	Trans - Department-wide	repair services not included as a fixed asset cost, fixed cost services for equipment replacement, unallowable grant expenses, and repairs and maintenance services due to accident damage. State Equipment Fleet vehicle leasing and maintenance.	-14.2	0.0	0.0

Personal Services Expenditure Detail
Department of Public Safety

Scenario: FY2024 Governor (19867)
Component: Alaska State Trooper Detachments (2325)
RDU: Alaska State Troopers (160)

PCN	Job Class Title	Time Status	Retire Code	Barg Unit	Location	Salary Sched	Range / Step	Comp Months	Split / Count	Annual Salaries	COLA	Premium Pay	Annual Benefits	Total Costs	UGF Amount
02-9524	Criminal Justice Technician 1	FT	A	GP	Kotzebue	160	12D / E	12.0		73,727	2,596	0	49,116	125,439	62,739
12-#049	Public Safety Technician 2	FT	A	GG	Fairbanks	103	11C / C	12.0		43,368	1,615	2,502	37,737	85,222	85,222
12-#053	Training Specialist 2	FT	A	GG	Anchorage	100	18C	12.0		67,743	2,385	0	46,672	116,800	116,800
12-#058	Mental Health Clinician 2	FT	A	GG	Anchorage	100	19C / C	12.0		72,345	2,547	0	48,552	123,444	123,444
12-#059	Criminal Justice Technician 2	FT	A	GG	Anchorage	100	14C / C	12.0		51,110	1,869	1,965	40,680	95,624	95,624
12-?170	Criminal Justice Technician 1	FT	A	GP	Juneau	105	12A / B	12.0		45,084	1,710	3,468	38,832	89,094	89,094
12-?172	Public Safety Technician 2	FT	A	GP	Ketchikan	100	11A / B	12.0		40,385	1,531	3,106	36,765	81,787	81,787
12-?173	Public Safety Technician 2	FT	A	GP	Soldotna	100	11A / B	12.0		40,385	1,531	3,106	36,765	81,787	81,787
12-?192	Victim/Witness Paralegal 1	FT	A	GP	Palmer	100	14A / B	12.0		48,906	1,855	3,762	40,514	95,037	95,037
12-?199	Office Assistant 2	FT	A	GP	Juneau	105	10C / C	12.0		41,282	1,565	3,175	37,159	83,181	83,181
12-0099	Sergeant DPS	FT	P	AA	Anchorage	100	79L	12.0		129,293	0	16,140	78,082	223,515	223,515
12-1001	Lieutenant DPS	FT	P	SS	Anchorage	99	24R	12.0		178,651	2,417	756	93,783	275,607	275,607
12-1013	Captain DPS	FT	P	SS	Anchorage	99	25N / O	12.0		174,376	2,414	4,800	93,703	275,293	275,293
12-1014	Captain DPS	FT	P	SS	Fairbanks	99	25T	12.0		210,945	2,907	4,800	106,400	325,052	325,052
12-1019	State Trooper	FT	P	AA	Nome	99	77E / F	12.0		137,571	0	25,748	85,197	248,516	248,516
12-1024	Captain DPS	FT	P	SS	Soldotna	99	25R	12.0		192,105	2,653	4,800	99,858	299,416	299,416
12-1027	Major DPS	FT	P	SS	Anchorage	99	26R	12.0		199,011	2,691	756	100,852	303,310	303,310
12-1029	State Trooper	FT	P	AA	Palmer	100	77F / J	12.0		103,334	0	22,384	70,028	195,746	195,746
12-1031	State Trooper	FT	P	AA	Kotzebue	99	77N / O	12.0		201,507	0	40,024	112,352	353,883	353,883
12-1034	State Trooper	FT	P	AA	Ketchikan	1EE	77N	12.0		129,106	0	25,986	82,028	237,120	237,120
12-1037	Sergeant DPS	FT	P	AA	Saint Marys	99	79O / P	12.0		197,546	0	36,135	109,627	343,308	343,308
12-1039	Sergeant DPS	FT	P	AA	Anchorage	99	79O	12.0		149,802	0	21,487	87,964	259,253	259,253
12-1040	State Trooper	FT	P	AA	Juneau	105	77R / R	12.0		146,141	0	25,170	87,972	259,283	259,283
12-1041	State Trooper	FT	P	AA	Tok	115	77F / J	12.0		116,314	0	24,276	76,104	216,694	216,694
12-1045	Sergeant DPS	FT	P	AA	Tok	115	79D / E	12.0		128,122	0	22,402	80,162	230,686	230,686
12-1048	Sergeant DPS	FT	P	AA	Wasilla	99	79J / K	12.0		133,955	0	23,737	83,090	240,782	240,782
12-1049	State Trooper	FT	P	AA	Wasilla	100	77C / D	12.0		92,447	0	25,619	66,903	184,969	184,969
12-1055	Office Assistant 2	FT	A	GP	Soldotna	100	10C / D	12.0		40,116	1,413	0	35,386	76,915	76,915
12-1057	Lieutenant DPS	FT	P	SS	Palmer	99	24O	12.0		161,179	2,236	4,800	89,121	257,336	257,336
12-1061	Sergeant DPS	FT	F	AA	Ketchikan	99	79F	12.0		129,092	0	22,176	80,466	231,734	231,734
12-1062	Captain DPS	FT	P	SS	Anchorage	99	25P	12.0		185,588	2,548	3,532	97,155	288,823	288,823
12-1064	Sergeant DPS	FT	P	AA	Palmer	100	79J	12.0		120,099	0	25,839	78,288	224,226	224,226
12-1066	Sergeant DPS	FT	P	AA	Anchorage	100	79J / K	12.0		123,861	0	18,024	76,633	218,518	218,518
12-1067	State Trooper	FT	P	AA	Soldotna	100	77D / E	12.0		96,283	0	18,586	65,597	180,466	180,466
12-1069	State Trooper	FT	P	AA	Wasilla	100	77E / F	12.0		96,796	0	17,411	65,326	179,533	179,533
12-1070	State Trooper	FT	P	AA	Palmer	100	77D / E	12.0		93,967	0	23,835	66,795	184,597	184,597

Note: If a position is split, an asterisk (*) will appear in the Split/Count column. If the split position is also counted in the component, two asterisks (**) will appear in this column. [No valid job title] appearing in the Job Class Title indicates that the PCN has an invalid class code or invalid range for the class code effective date of this scenario.

Personal Services Expenditure Detail
Department of Public Safety

Scenario: FY2024 Governor (19867)
Component: Alaska State Trooper Detachments (2325)
RDU: Alaska State Troopers (160)

PCN	Job Class Title	Time Status	Retire Code	Barg Unit	Location	Salary Sched	Range / Step	Comp Months	Split / Count	Annual Salaries	COLA	Premium Pay	Annual Benefits	Total Costs	UGF Amount
12-1074	Captain DPS	FT	P	SS	Palmer	99	25Q	12.0		196,260	2,727	6,186	101,782	306,955	306,955
12-1079	Administrative Assistant 2	FT	A	GP	Fairbanks	103	14J	12.0		62,459	2,199	0	44,513	109,171	109,171
12-1086	Sergeant DPS	FT	P	AA	Dillingham	99	79L / M	12.0		186,645	0	28,688	103,256	318,589	318,589
12-1088	State Trooper	FT	P	AA	Soldotna	99	77J	12.0		112,083	0	17,783	71,723	201,589	201,589
12-1091	State Trooper	FT	P	AA	Ketchikan	1EE	77F / J	12.0		111,089	0	13,534	69,581	194,204	194,204
12-1093	State Trooper	FT	P	AA	Wasilla	99	77M	12.0		120,099	0	20,260	76,009	216,368	216,368
12-1094	State Trooper	FT	P	AA	Palmer	100	77F	12.0		99,902	0	25,334	69,832	195,068	195,068
12-1098	State Trooper	FT	P	AA	Nome	137	77E / F	12.0		133,605	0	24,651	83,320	241,576	241,576
12-1100	Sergeant DPS	FT	P	AA	Nome	99	79O / P	12.0		211,326	0	29,245	112,019	352,590	352,590
12-1101	State Trooper	FT	P	AA	Bethel	150	77C / D	12.0		138,671	0	24,114	85,012	247,797	247,797
12-1106	Office Assistant 2	FT	A	GP	Fairbanks	103	10C / D	12.0		40,815	1,437	0	35,672	77,924	77,924
12-1109	Administrative Assistant 2	FT	A	GP	Anchorage	100	14B / C	12.0		49,778	1,753	0	39,333	90,864	90,864
12-1111	Administrative Assistant 2	FT	A	GP	Ketchikan	100	14K	12.0		62,615	2,205	0	44,577	109,397	109,397
12-1113	Lieutenant DPS	FT	P	SS	Soldotna	99	24M / N	12.0		159,836	2,218	4,800	88,654	255,508	255,508
12-1115	Lieutenant DPS	FT	P	SS	Bethel	99	24Q	12.0		273,999	3,756	4,800	128,292	410,847	410,847
12-1120	Criminal Justice Technician 1	FT	A	GP	Bethel	150	12A / B	12.0		64,409	2,268	0	45,310	111,987	111,987
12-1122	State Trooper	FT	P	AA	Ketchikan	99	77O	12.0		138,986	0	17,310	82,520	238,816	238,816
12-1123	State Trooper	FT	P	AA	Seward	100	77E / F	12.0		97,520	0	16,256	65,150	178,926	178,926
12-1125	State Trooper	FT	P	AA	Soldotna	100	77D / E	12.0		95,907	0	19,323	65,744	180,974	180,974
12-1128	Sergeant DPS	FT	P	AA	Fairbanks	103	79O	12.0		148,720	0	27,246	89,588	265,554	265,554
12-1130	State Trooper	FT	P	AA	King Salmon	150	77L	12.0		167,357	0	24,713	95,180	287,250	287,250
12-1133	State Trooper	FT	P	AA	Glennallen	1FF	77F / J	12.0		114,793	0	25,709	76,068	216,570	216,570
12-1138	State Trooper	FT	P	AA	Wasilla	100	77F	12.0		99,902	0	16,975	66,417	183,294	183,294
12-1140	Sergeant DPS	FT	P	AA	Kenai	100	79P	12.0		149,802	0	22,624	88,359	260,785	260,785
12-1150	Lieutenant DPS	FT	P	SS	Anchorage	99	24P	12.0		167,223	2,317	4,800	91,219	265,559	265,559
12-1155	Office Assistant 3	FT	A	GP	Aniak	150	11B / C	12.0		62,083	2,186	0	44,360	108,629	108,629
12-1158	Division Director - Px	FT	P	XE	Anchorage	N00	27T / U	12.0		186,308	0	0	96,035	282,343	282,343
12-1161	Lieutenant DPS	FT	P	SS	Wasilla	99	24M	12.0		162,325	2,270	6,186	90,000	260,781	260,781
12-1164	Administrative Assistant 2	FT	A	SS	Soldotna	500	14B / C	12.0		51,433	724	0	42,683	94,840	94,840
12-1173	Sergeant DPS	FT	P	AA	Fairbanks	103	79M / N	12.0		142,270	0	19,970	84,823	247,063	247,063
12-1177	State Trooper	FT	P	AA	Nome	137	77D / E	12.0		131,914	0	20,714	81,021	233,649	233,649
12-1183	State Trooper	FT	P	AA	Seward	100	77J / K	12.0		104,943	0	23,469	71,129	199,541	199,541
12-1185	State Trooper	FT	P	AA	Delta Junction	99	77O	12.0		147,618	0	31,839	90,800	270,257	270,257
12-1188	State Trooper	FT	P	AA	Anchor Point	100	77D / E	12.0		96,283	0	17,459	65,136	178,878	178,878
12-1191	State Trooper	FT	P	AA	Palmer	99	77C / D	12.0		94,872	0	15,988	63,959	174,819	174,819
12-1192	Court Services Officer	FT	P	AA	Nome	537	74N	12.0		125,091	0	12,032	74,687	211,810	211,810
12-1193	Sergeant DPS	FT	P	AA	Healy	115	79M	12.0		154,253	0	28,492	91,942	274,687	274,687

Note: If a position is split, an asterisk (*) will appear in the Split/Count column. If the split position is also counted in the component, two asterisks (**) will appear in this column. [No valid job title] appearing in the Job Class Title indicates that the PCN has an invalid class code or invalid range for the class code effective date of this scenario.

Personal Services Expenditure Detail
Department of Public Safety

Scenario: FY2024 Governor (19867)
Component: Alaska State Trooper Detachments (2325)
RDU: Alaska State Troopers (160)

PCN	Job Class Title	Time Status	Retire Code	Barg Unit	Location	Salary Sched	Range / Step	Comp Months	Split / Count	Annual Salaries	COLA	Premium Pay	Annual Benefits	Total Costs	UGF Amount
12-1196	Office Assistant 3	FT	A	GP	Juneau	105	11K / L	12.0		53,594	1,887	0	40,892	96,373	96,373
12-1209	State Trooper	FT	P	AA	Aniak	99	77E / F	12.0		107,738	0	20,128	70,906	198,772	198,772
12-1211	State Trooper	FT	P	AA	Fairbanks	103	77F	12.0		102,898	0	22,247	69,794	194,939	194,939
12-1212	Sergeant DPS	FT	P	AA	Fairbanks	103	79J	12.0		123,698	0	19,518	77,176	220,392	220,392
12-1213	State Trooper	FT	P	AA	Fairbanks	103	77D / E	12.0		99,174	0	26,495	70,008	195,677	195,677
12-1215	State Trooper	FT	P	AA	Wasilla	99	77O	12.0		135,757	0	29,910	86,012	251,679	251,679
12-1218	Lieutenant DPS	FT	P	SS	Anchorage	99	24O	12.0		168,881	2,359	6,186	92,276	269,702	269,702
12-1219	Lieutenant DPS	FT	P	SS	Fairbanks	99	24P / Q	12.0		181,453	2,551	7,918	97,242	289,164	289,164
12-1221	Office Assistant 3	FT	A	GP	Anchor Point	100	11D / E	12.0		43,161	1,520	0	36,630	81,311	81,311
12-1222	Administrative Assistant 1	FT	A	GP	Fairbanks	103	12B / C	12.0		45,429	1,600	0	37,556	84,585	84,585
12-1231	State Trooper	FT	P	AA	Fairbanks	103	77D / E	12.0		96,849	0	22,149	67,283	186,281	186,281
12-1235	State Trooper	FT	P	AA	Soldotna	99	77M	12.0		126,104	0	24,548	80,214	230,866	230,866
12-1236	State Trooper	FT	P	AA	Soldotna	100	77D / E	12.0		93,967	0	16,998	64,002	174,967	174,967
12-1237	State Trooper	FT	P	AA	Kodiak	99	77J / K	12.0		120,724	0	19,491	75,950	216,165	216,165
12-1238	State Trooper	FT	P	AA	Kodiak	111	77C / D	12.0		103,022	0	21,662	69,606	194,290	194,290
12-1243	Secretary	FT	A	GP	Anchorage	100	11K	12.0		50,895	1,792	0	39,789	92,476	92,476
12-1249	Office Assistant 3	FT	A	GP	Seward	100	11F / G	12.0		46,603	1,641	0	38,036	86,280	86,280
12-1251	State Trooper	FT	P	AA	Anchor Point	100	77J / K	12.0		105,429	0	24,931	71,925	202,285	202,285
12-1252	State Trooper	FT	P	AA	Kodiak	99	77J / K	12.0		119,611	0	23,300	77,052	219,963	219,963
12-1256	State Trooper	FT	P	AA	Bethel	150	77D / E	12.0		143,870	0	26,585	87,675	258,130	258,130
12-1257	State Trooper	FT	P	AA	Bethel	150	77C / D	12.0		139,214	0	21,596	84,326	245,136	245,136
12-1258	Lieutenant DPS	FT	P	SS	Fairbanks	99	24N	12.0		165,608	2,314	6,186	91,140	265,248	265,248
12-1259	State Trooper	FT	P	AA	Delta Junction	99	77N	12.0		142,251	0	27,077	87,284	256,612	256,612
12-1261	State Trooper	FT	P	AA	Kotzebue	160	77C / D	12.0		148,491	0	25,624	88,946	263,061	263,061
12-1262	State Trooper	FT	P	AA	Wasilla	100	77C / D	12.0		92,810	0	26,500	67,411	186,721	186,721
12-1263	State Trooper	FT	P	AA	Wasilla	99	77C / D	12.0		97,186	0	20,082	66,577	183,845	183,845
12-1265	State Trooper	FT	P	AA	Palmer	100	77D / E	12.0		93,967	0	22,218	66,134	182,319	182,319
12-1268	State Trooper	FT	P	AA	Palmer	100	77D / E	12.0		93,967	0	16,197	63,675	173,839	173,839
12-1272	State Trooper	FT	P	AA	Galena	137	77F / J	12.0		141,574	0	28,962	87,703	258,239	258,239
12-1275	State Trooper	FT	P	AA	Fairbanks	103	77D / E	12.0		98,250	0	22,380	67,950	188,580	188,580
12-1278	State Trooper	FT	P	AA	Fairbanks	103	77D / E	12.0		98,936	0	18,486	66,639	184,061	184,061
12-1279	State Trooper	FT	P	AA	Palmer	99	77N / O	12.0		127,684	0	20,686	79,282	227,652	227,652
12-1281	State Trooper	FT	P	AA	Aniak	99	77N / O	12.0		168,926	0	25,436	95,975	290,337	290,337
12-1282	State Trooper	FT	P	AA	Cantwell	115	77F / J	12.0		118,825	0	28,795	78,975	226,595	226,595
12-1283	State Trooper	FT	P	AA	Palmer	100	77K	12.0		107,536	0	24,546	72,628	204,710	204,710
12-1285	State Trooper	FT	P	AA	Craig	1EE	77E / F	12.0		107,066	0	23,862	72,157	203,085	203,085
12-1289	State Trooper	FT	P	AA	Healy	115	77O / P	12.0		145,101	0	24,852	87,501	257,454	257,454
12-1303	Sergeant DPS	FT	P	AA	Palmer	99	79F	12.0		121,540	0	24,179	78,199	223,918	223,918

Note: If a position is split, an asterisk (*) will appear in the Split/Count column. If the split position is also counted in the component, two asterisks (**) will appear in this column. [No valid job title] appearing in the Job Class Title indicates that the PCN has an invalid class code or invalid range for the class code effective date of this scenario.

Personal Services Expenditure Detail
Department of Public Safety

Scenario: FY2024 Governor (19867)
Component: Alaska State Trooper Detachments (2325)
RDU: Alaska State Troopers (160)

PCN	Job Class Title	Time Status	Retire Code	Barg Unit	Location	Salary Sched	Range / Step	Comp Months	Split / Count	Annual Salaries	COLA	Premium Pay	Annual Benefits	Total Costs	UGF Amount
12-1332	State Trooper	FT	P	AA	Ketchikan	1EE	77F	12.0		107,390	0	16,534	69,296	193,220	193,220
12-1334	State Trooper	FT	P	AA	Saint Marys	99	77D / E	12.0		125,988	0	20,465	78,499	224,952	224,952
12-1335	State Trooper	FT	P	AA	Fairbanks	103	77E / F	12.0		102,649	0	20,521	68,988	192,158	192,158
12-1337	State Trooper	FT	P	AA	Aniak	99	77C / D	12.0		121,713	0	19,362	76,302	217,377	217,377
12-1338	State Trooper	FT	P	AA	Glennallen	1FF	77D / E	12.0		106,830	0	19,451	70,258	196,539	196,539
12-1340	State Trooper	FT	P	AA	Soldotna	100	77J / K	12.0		104,197	0	21,249	69,917	195,363	195,363
12-1341	State Trooper	FT	P	AA	Kodiak	111	77C / D	12.0		103,022	0	17,289	67,820	188,131	188,131
12-1351	Office Assistant 4	FT	A	SS	Palmer	500	12F / J	12.0		51,556	726	0	42,733	95,015	95,015
12-1353	Lieutenant DPS	FT	P	SS	Anchorage	99	24N / O	12.0		164,152	2,377	12,312	92,761	271,602	271,602
12-1354	Sergeant DPS	FT	P	AA	Soldotna	99	79L / M	12.0		141,066	0	32,370	88,710	262,146	262,146
12-1356	Sergeant DPS	FT	P	AA	Wasilla	99	79E / F	12.0		124,432	0	20,817	78,007	223,256	223,256
12-1362	Criminal Justice Technician 1	FT	A	GP	Fairbanks	103	12N	12.0		61,776	2,175	0	44,234	108,185	108,185
12-1363	Office Assistant 3	FT	A	GP	Delta Junction	100	11K / L	12.0		51,033	1,797	0	39,846	92,676	92,676
12-1367	Office Assistant 2	FT	A	GP	Soldotna	100	10B / C	12.0		38,698	1,363	0	34,807	74,868	74,868
12-1373	State Trooper	FT	P	AA	Glennallen	1FF	77C / D	12.0		103,251	0	27,483	72,077	202,811	202,811
12-1374	State Trooper	FT	P	AA	Seward	100	77E / F	12.0		99,631	0	21,293	68,070	188,994	188,994
12-1378	State Trooper	FT	P	AA	Wasilla	100	77D / E	12.0		94,025	0	23,149	66,538	183,712	183,712
12-1380	Criminal Justice Technician 1	FT	A	GP	Fairbanks	103	12N	12.0		61,776	2,175	0	44,234	108,185	108,185
12-1383	Sergeant DPS	FT	P	AA	Soldotna	99	79O	12.0		157,292	0	28,304	92,932	278,528	278,528
12-1384	Sergeant DPS	FT	P	AA	Saint Marys	99	79N / O	12.0		188,099	0	26,558	103,022	317,679	317,679
12-1386	Sergeant DPS	FT	P	AA	Fairbanks	103	79M	12.0		138,154	0	21,238	83,784	243,176	243,176
12-1388	Sergeant DPS	FT	P	AA	Delta Junction	99	79O	12.0		172,266	0	36,163	100,859	309,288	309,288
12-1389	Sergeant DPS	FT	P	AA	Soldotna	100	79K / L	12.0		128,786	0	26,866	82,256	237,908	237,908
12-1391	State Trooper	FT	P	AA	Tok	99	77F / J	12.0		119,877	0	23,266	77,147	220,290	220,290
12-1392	State Trooper	FT	P	AA	Unalakleet	150	77E / F	12.0		146,290	0	26,718	88,561	261,569	261,569
12-1394	State Trooper	FT	P	AA	Fairbanks	103	77C / D	12.0		95,597	0	18,544	65,299	179,440	179,440
12-1395	State Trooper	FT	P	AA	Palmer	100	77F / J	12.0		103,178	0	21,010	69,403	193,591	193,591
12-1408	Sergeant DPS	FT	P	AA	Wasilla	99	79E / F	12.0		115,299	0	25,581	76,222	217,102	217,102
12-1411	State Trooper	FT	P	AA	Cantwell	99	77M / N	12.0		138,759	0	27,291	86,145	252,195	252,195
12-1412	State Trooper	FT	P	AA	Fairbanks	103	77C / D	12.0		93,353	0	22,100	65,835	181,288	181,288
12-1416	Sergeant DPS	FT	P	AA	Bethel	99	79M	12.0		208,770	0	45,554	116,794	371,118	371,118
12-1417	State Trooper	FT	P	AA	Fairbanks	103	77O / P	12.0		132,561	0	20,641	81,256	234,458	234,458
12-1418	State Trooper	FT	P	AA	Fairbanks	103	77E / F	12.0		100,477	0	19,079	67,511	187,067	187,067
12-1421	Office Assistant 2	FT	A	GP	Wasilla	100	10D / E	12.0		40,470	1,425	0	35,531	77,426	77,426
12-1431	State Trooper	FT	P	AA	Bethel	150	77C / D	12.0		139,214	0	21,711	84,366	245,291	245,291

Note: If a position is split, an asterisk (*) will appear in the Split/Count column. If the split position is also counted in the component, two asterisks (**) will appear in this column. [No valid job title] appearing in the Job Class Title indicates that the PCN has an invalid class code or invalid range for the class code effective date of this scenario.

Personal Services Expenditure Detail
Department of Public Safety

Scenario: FY2024 Governor (19867)
Component: Alaska State Trooper Detachments (2325)
RDU: Alaska State Troopers (160)

PCN	Job Class Title	Time Status	Retire Code	Barg Unit	Location	Salary Sched	Range / Step	Comp Months	Split / Count	Annual Salaries	COLA	Premium Pay	Annual Benefits	Total Costs	UGF Amount
12-1432	State Trooper	FT	P	AA	Nenana	1DD	77J	12.0		107,536	0	26,512	73,431	207,479	207,479
12-1437	State Trooper	FT	P	AA	Bethel	150	77F / J	12.0		155,012	0	22,632	90,171	267,815	267,815
12-1443	Criminal Justice Technician 1	FT	A	GP	Palmer	99	12P	12.0		64,526	2,272	0	45,358	112,156	112,156
12-1444	Criminal Justice Technician 1	FT	A	GP	Soldotna	100	12G / J	12.0		52,535	1,850	0	40,459	94,844	94,844
12-1455	State Trooper	FT	P	AA	Fairbanks	103	77J / K	12.0		108,084	0	23,793	72,544	204,421	204,421
12-1456	Sergeant DPS	FT	P	AA	Fairbanks	103	79K	12.0		128,357	0	26,272	81,839	236,468	236,468
12-1457	Sergeant DPS	FT	P	AA	Fairbanks	103	79J	12.0		123,698	0	22,627	78,446	224,771	224,771
12-1462	Criminal Justice Technician 1	FT	A	GP	Palmer	99	12O	12.0		62,166	2,189	0	44,393	108,748	108,748
12-1469	Accounting Technician 1	FT	A	GP	Anchorage	100	12K	12.0		54,483	1,918	0	41,255	97,656	97,656
12-1471	Office Assistant 2	FT	A	GP	Palmer	100	10E / F	12.0		41,988	1,479	0	36,151	79,618	79,618
12-1473	Administrative Assistant 1	FT	A	GP	Soldotna	100	12P	12.0		63,941	2,252	0	45,119	111,312	111,312
12-1476	State Trooper	FT	P	AA	Anchor Point	100	77K / L	12.0		108,881	0	23,301	72,669	204,851	204,851
12-1477	State Trooper	FT	P	AA	Fairbanks	103	77E / F	12.0		100,415	0	22,524	68,893	191,832	191,832
12-1478	State Trooper	FT	P	AA	Fairbanks	103	77O / P	12.0		132,161	0	22,710	81,937	236,808	236,808
12-1479	State Trooper	FT	P	AA	Fairbanks	103	77D / E	12.0		96,789	0	25,430	68,599	190,818	190,818
12-1480	State Trooper	FT	P	AA	Dillingham	137	77F	12.0		136,864	0	23,258	84,082	244,204	244,204
12-1482	State Trooper	FT	P	AA	Fairbanks	103	77C / D	12.0		95,597	0	21,531	66,519	183,647	183,647
12-1483	State Trooper	FT	P	AA	Fairbanks	103	77K	12.0		110,760	0	20,864	72,441	204,065	204,065
12-1484	State Trooper	FT	P	AA	Nome	137	77E / F	12.0		133,564	0	21,362	81,960	236,886	236,886
12-1486	State Trooper	FT	P	AA	Wasilla	100	77D / E	12.0		94,025	0	18,731	64,733	177,489	177,489
12-1487	Office Assistant 2	FT	A	GP	Fairbanks	103	10C / D	12.0		40,815	1,437	0	35,672	77,924	77,924
12-1489	Office Assistant 3	FT	A	GP	Ketchikan	100	11B / C	12.0		41,071	1,446	0	35,776	78,293	78,293
12-1495	Sergeant DPS	FT	P	AA	Seward	100	79K	12.0		124,613	0	24,688	79,662	228,963	228,963
12-1499	State Trooper	FT	P	AA	Anchorage	100	77L	12.0		111,571	0	18,075	71,633	201,279	201,279
12-1509	Office Assistant 2	FT	A	GP	Fairbanks	103	10C / D	12.0		40,815	1,437	0	35,672	77,924	77,924
12-1511	Office Assistant 2	FT	A	GP	Fairbanks	103	10J	12.0		47,600	1,676	0	38,443	87,719	87,719
12-1512	Criminal Justice Technician 1	FT	A	GP	Nome	137	12G	12.0		69,362	2,442	0	47,333	119,137	119,137
12-1514	Administrative Assistant 2	FT	A	SS	Palmer	500	14D / E	12.0		55,980	788	0	44,540	101,308	101,308
12-1520	State Trooper	FT	P	AA	Fairbanks	103	77C / D	12.0		95,597	0	19,990	65,890	181,477	181,477
12-1527	Criminal Justice Technician 1	FT	A	GP	Palmer	100	12K / L	12.0		54,527	1,920	0	41,273	97,720	97,720
12-1531	Sergeant DPS	FT	P	AA	Juneau	99	79O	12.0		151,611	0	24,279	89,562	265,452	265,452
12-1548	Sergeant DPS	FT	P	AA	Kodiak	99	79L / M	12.0		153,320	0	22,536	89,550	265,406	265,406
12-1550	State Trooper	FT	P	AA	Wasilla	100	77C / D	12.0		90,633	0	19,868	63,812	174,313	174,313
12-1552	State Trooper	FT	P	AA	Fairbanks	103	77F / J	12.0		105,463	0	20,167	69,992	195,622	195,622

Note: If a position is split, an asterisk (*) will appear in the Split/Count column. If the split position is also counted in the component, two asterisks (**) will appear in this column. [No valid job title] appearing in the Job Class Title indicates that the PCN has an invalid class code or invalid range for the class code effective date of this scenario.

Personal Services Expenditure Detail
Department of Public Safety

Scenario: FY2024 Governor (19867)
Component: Alaska State Trooper Detachments (2325)
RDU: Alaska State Troopers (160)

PCN	Job Class Title	Time Status	Retire Code	Barg Unit	Location	Salary Sched	Range / Step	Comp Months	Split / Count	Annual Salaries	COLA	Premium Pay	Annual Benefits	Total Costs	UGF Amount
12-1554	State Trooper	FT	P	AA	Saint Marys	99	77L	12.0		150,827	0	25,076	89,566	265,469	265,469
12-1556	Administrative Assistant 1	FT	A	GP	Bethel	150	12C / D	12.0		68,217	2,402	0	46,865	117,484	117,484
12-1557	Office Assistant 2	FT	A	GP	Anchorage	100	10C / D	12.0		39,544	1,392	0	35,152	76,088	76,088
12-1558	State Trooper	FT	P	AA	Soldotna	100	77J / K	12.0		106,531	0	19,723	70,247	196,501	196,501
12-1559	State Trooper	FT	P	AA	Bethel	150	77D / E	12.0		144,435	0	26,925	87,989	259,349	259,349
12-1561	State Trooper	FT	P	AA	Craig	1EE	77E / F	12.0		104,830	0	16,071	68,061	188,962	188,962
12-1563	Administrative Assistant 3	FT	A	SS	Anchorage	100	15J / K	12.0		66,525	937	0	48,848	116,310	116,310
12-1566	State Trooper	FT	P	AA	King Salmon	99	77D / E	12.0		148,365	0	23,379	88,122	259,866	259,866
12-1583	Sergeant DPS	FT	P	AA	Glennallen	99	79N	12.0		160,638	0	29,964	94,670	285,272	285,272
12-1588	State Trooper	FT	P	AA	Craig	1EE	77J	12.0		114,774	0	16,426	72,268	203,468	203,468
12-1590	State Trooper	FT	P	AA	Galena	99	77N / O	12.0		176,326	0	30,911	100,446	307,683	307,683
12-1593	State Trooper	FT	P	AA	Palmer	100	77F	12.0		99,902	0	17,854	66,776	184,532	184,532
12-1596	State Trooper	FT	P	AA	Fairbanks	103	77C / D	12.0		95,597	0	16,406	64,426	176,429	176,429
12-1601	State Trooper	FT	P	AA	Kodiak	111	77J / K	12.0		116,487	0	25,803	76,798	219,088	219,088
12-1604	Office Assistant 3	FT	A	GP	Dillingham	137	11E / F	12.0		62,190	2,190	0	44,403	108,783	108,783
12-1605	Administrative Assistant 1	FT	A	GP	Anchorage	100	12D / E	12.0		47,063	1,657	0	38,224	86,944	86,944
12-1606	Office Assistant 3	FT	A	GP	Kotzebue	160	11D / E	12.0		70,941	2,498	0	47,978	121,417	121,417
12-1608	Lieutenant DPS	FT	P	SS	Anchorage	99	24P / Q	12.0		176,402	2,441	4,800	94,406	278,049	278,049
12-1610	State Trooper	FT	P	AA	Fairbanks	99	77J	12.0		109,949	0	17,896	70,897	198,742	198,742
12-1611	State Trooper	FT	P	AA	Soldotna	100	77C / D	12.0		92,810	0	21,919	65,539	180,268	180,268
12-1619	Office Assistant 2	FT	A	GP	Palmer	100	10J / K	12.0		47,153	1,660	0	38,261	87,074	87,074
12-1622	Criminal Justice Technician 1	FT	A	GP	Soldotna	100	12C / D	12.0		44,542	1,568	0	37,194	83,304	83,304
12-1623	Office Assistant 3	FT	A	GP	Kenai	100	11L / M	12.0		53,840	1,896	0	40,992	96,728	96,728
12-1631	Office Assistant 3	FT	A	GP	Tok	100	11C / D	12.0		42,390	1,498	160	36,380	80,428	80,428
12-1637	Administrative Assistant 3	FT	A	SS	Anchorage	500	15J / K	12.0		66,425	936	0	48,807	116,168	116,168
12-1647	Lieutenant DPS	FT	P	SS	Ketchikan	C00	24M	12.0		163,689	2,270	4,800	89,992	260,751	260,751
12-1649	State Trooper	FT	P	AA	Wasilla	100	77C / D	12.0		92,810	0	19,837	64,689	177,336	177,336
12-1651	State Trooper	FT	P	AA	Palmer	100	77C / D	12.0		90,577	0	17,755	62,926	171,258	171,258
12-1652	State Trooper	FT	P	AA	Fairbanks	103	77J	12.0		106,746	0	24,793	72,406	203,945	203,945
12-1653	State Trooper	FT	P	AA	Fairbanks	103	77C / D	12.0		95,223	0	16,804	64,436	176,463	176,463
12-1654	State Trooper	FT	P	AA	Fairbanks	103	77E / F	12.0		102,649	0	18,332	68,093	189,074	189,074
12-1655	State Trooper	FT	P	AA	Palmer	100	77M / N	12.0		123,061	0	20,662	77,383	221,106	221,106
12-1656	State Trooper	FT	P	AA	Fairbanks	103	77N	12.0		123,698	0	27,637	80,493	231,828	231,828
12-1657	State Trooper	FT	P	AA	Seward	100	77C / D	12.0		91,944	0	18,798	63,911	174,653	174,653
12-1658	Sergeant DPS	FT	P	AA	Anchor Point	100	79M / N	12.0		142,433	0	21,491	85,407	249,331	249,331
12-1659	State Trooper	FT	P	AA	Palmer	100	77L	12.0		114,920	0	19,643	73,642	208,205	208,205
12-1660	Sergeant DPS	FT	P	AA	Soldotna	100	79M	12.0		140,846	0	22,731	85,287	248,864	248,864
12-1661	State Trooper	FT	P	AA	Tok	115	77C / D	12.0		106,308	0	22,053	71,108	199,469	199,469

Note: If a position is split, an asterisk (*) will appear in the Split/Count column. If the split position is also counted in the component, two asterisks (**) will appear in this column. [No valid job title] appearing in the Job Class Title indicates that the PCN has an invalid class code or invalid range for the class code effective date of this scenario.

Personal Services Expenditure Detail
Department of Public Safety

Scenario: FY2024 Governor (19867)
Component: Alaska State Trooper Detachments (2325)
RDU: Alaska State Troopers (160)

PCN	Job Class Title	Time Status	Retire Code	Barg Unit	Location	Salary Sched	Range / Step	Comp Months	Split / Count	Annual Salaries	COLA	Premium Pay	Annual Benefits	Total Costs	UGF Amount
12-1663	Sergeant DPS	FT	P	AA	Kotzebue	160	79O / P	12.0		246,796	0	43,492	129,281	419,569	419,569
12-1667	Procurement Specialist 1	FT	A	GP	Anchorage	100	14M	12.0		66,749	2,423	2,053	47,104	118,329	118,329
12-1677	Court Services Officer	FT	P	AA	Palmer	500	74N / O	12.0		92,027	0	8,987	59,937	160,951	160,951
12-1678	Court Services Officer	FT	P	AA	Kenai	500	74L	12.0		84,822	0	8,402	56,755	149,979	149,979
12-1679	Court Services Officer	FT	P	AA	Kenai	500	74M / N	12.0		88,969	0	12,189	59,996	161,154	161,154
12-1680	State Trooper	FT	P	AA	Wasilla	100	77D / E	12.0		95,791	0	19,898	65,932	181,621	181,621
12-1681	State Trooper	FT	P	AA	Wasilla	100	77M	12.0		121,540	0	20,431	76,668	218,639	218,639
12-1682	State Trooper	FT	P	AA	Wasilla	100	77C / D	12.0		92,810	0	21,638	65,425	179,873	179,873
12-1685	Court Services Officer	FT	P	AA	Palmer	500	74P	12.0		98,301	0	18,934	66,563	183,798	183,798
12-1693	Court Services Officer	FT	P	AA	Palmer	500	74K	12.0		81,765	0	8,126	55,393	145,284	145,284
12-1696	State Trooper Recruit	FT	P	AA	Wasilla	100	75L	12.0		96,283	0	17,988	65,352	179,623	179,623
12-1698	Court Services Officer	FT	P	AA	Fairbanks	503	74J	12.0		81,182	0	16,379	58,526	156,087	156,087
12-1699	Court Services Officer	FT	P	AA	Fairbanks	503	74M / N	12.0		91,073	0	10,427	60,135	161,635	161,635
12-1700	Court Services Officer	FT	P	AA	Fairbanks	503	74N / O	12.0		95,531	0	10,234	61,878	167,643	167,643
12-1701	Court Services Officer	FT	P	AA	Fairbanks	503	74C / D	12.0		72,696	0	7,809	51,559	132,064	132,064
12-1702	Court Services Officer	FT	P	AA	Fairbanks	503	74E / F	12.0		78,014	0	7,554	53,627	139,195	139,195
12-1703	Court Services Officer	FT	P	AA	Fairbanks	503	74N / O	12.0		95,678	0	9,734	61,733	167,145	167,145
12-1704	Court Services Officer	FT	P	AA	Juneau	505	74O / P	12.0		103,054	0	9,724	64,742	177,520	177,520
12-1705	State Trooper	FT	P	AA	Juneau	105	77F	12.0		108,035	0	13,624	68,370	190,029	190,029
12-1706	Court Services Officer	FT	P	AA	Ketchikan	5EE	74N	12.0		98,155	0	9,604	62,692	170,451	170,451
12-1708	State Trooper	FT	P	AA	Emmonak	150	77O / P	12.0		199,343	0	28,755	107,688	335,786	335,786
12-1709	State Trooper	FT	P	AA	Kotzebue	160	77M	12.0		190,757	0	30,098	105,174	326,029	326,029
12-1714	Court Services Officer	FT	P	AA	Anchorage	500	74M / N	12.0		88,969	0	13,189	60,404	162,562	162,562
12-1715	State Trooper Recruit	FT	P	AA	Palmer	100	75D / E	12.0		82,917	0	22,074	61,561	166,552	166,552
12-1716	Office Assistant 2	FT	A	GP	Palmer	99	10N / O	12.0		54,149	1,907	0	41,119	97,175	97,175
12-1763	Office Assistant 2	FT	A	GP	Anchorage	100	10B / C	12.0		38,990	1,476	2,928	36,122	79,516	79,516
12-1771	Office Assistant 3	FT	A	GP	Glennallen	100	11M	12.0		54,269	1,911	0	41,168	97,348	97,348
12-1773	Administrative Assistant 2	FT	A	GP	Anchorage	100	14B / C	12.0		49,321	1,737	0	39,146	90,204	90,204
12-1779	Court Services Officer	FT	P	AA	Nome	537	74M / N	12.0		120,746	0	11,623	72,745	205,114	205,114
12-1780	Major DPS	FT	P	SS	Anchorage	C00	26Q / R	12.0		198,536	2,685	756	100,687	302,664	302,664
12-1823	State Trooper	FT	P	AA	Soldotna	100	77K	12.0		112,913	0	28,103	76,278	217,294	217,294
12-1824	State Trooper	FT	P	AA	Soldotna	100	77F / J	12.0		108,337	0	25,271	73,251	206,859	206,859
12-1829	Office Assistant 2	FT	A	GP	Anchorage	100	10C / D	12.0		39,562	1,393	0	35,160	76,115	76,115
12-1841	State Trooper	FT	P	AA	Wasilla	100	77C / D	12.0		92,810	0	26,269	67,316	186,395	186,395
12-1842	State Trooper	FT	P	AA	Juneau	99	77O	12.0		134,763	0	16,807	80,589	232,159	232,159
12-1843	State Trooper	FT	P	AA	Soldotna	99	77K	12.0		112,913	0	23,163	74,260	210,336	210,336
12-1844	State Trooper	FT	P	AA	Dillingham	137	77C / D	12.0		127,150	0	21,315	79,321	227,786	227,786
12-1845	State Trooper	FT	P	AA	Delta Junction	115	77J	12.0		119,184	0	23,136	76,810	219,130	219,130

Note: If a position is split, an asterisk (*) will appear in the Split/Count column. If the split position is also counted in the component, two asterisks (**) will appear in this column. [No valid job title] appearing in the Job Class Title indicates that the PCN has an invalid class code or invalid range for the class code effective date of this scenario.

Personal Services Expenditure Detail
Department of Public Safety

Scenario: FY2024 Governor (19867)
Component: Alaska State Trooper Detachments (2325)
RDU: Alaska State Troopers (160)

PCN	Job Class Title	Time Status	Retire Code	Barg Unit	Location	Salary Sched	Range / Step	Comp Months	Split / Count	Annual Salaries	COLA	Premium Pay	Annual Benefits	Total Costs	UGF Amount
12-1877	State Trooper	FT	P	AA	Seward	100	77J / K	12.0		104,943	0	21,595	70,363	196,901	196,901
12-1879	State Trooper	FT	P	AA	Emmonak	150	77C / D	12.0		139,214	0	32,198	88,007	259,419	259,419
12-1883	State Trooper	FT	P	AA	Unalakleet	99	77F / J	12.0		167,747	0	27,336	96,226	291,309	291,309
12-1884	State Trooper	FT	P	AA	Emmonak	99	77N / O	12.0		191,515	0	30,328	105,517	327,360	327,360
12-1886	State Trooper	FT	P	AA	Aniak	99	77M / N	12.0		156,926	0	23,183	91,027	271,136	271,136
12-1888	State Trooper	FT	P	AA	Soldotna	99	77N / O	12.0		130,251	0	23,864	81,629	235,744	235,744
12-1889	Criminal Justice Technician 1	FT	A	GP	Anchorage	99	12R / S	12.0		71,079	2,503	0	48,034	121,616	121,616
12-1895	Office Assistant 4	FT	A	SS	Fairbanks	503	12J / K	12.0		55,567	783	0	44,372	100,722	100,722
12-1900	Sergeant DPS	FT	P	AA	Palmer	100	79J / K	12.0		123,672	0	19,090	76,991	219,753	219,753
12-1903	Sergeant DPS	FT	P	AA	Craig	99	79J / K	12.0		137,347	0	23,639	84,387	245,373	245,373
12-1904	State Trooper	FT	P	AA	Dillingham	137	77D / E	12.0		128,738	0	20,795	79,757	229,290	229,290
12-1905	State Trooper	FT	P	AA	Nome	137	77K	12.0		147,326	0	22,561	87,478	257,365	257,365
12-1906	State Trooper	FT	P	AA	Kotzebue	160	77O	12.0		199,389	0	32,102	108,867	340,358	340,358
12-1907	State Trooper	FT	P	AA	Bethel	99	77O	12.0		169,693	0	25,243	96,175	291,111	291,111
12-1908	State Trooper	FT	P	AA	Bethel	99	77D / E	12.0		125,988	0	20,810	78,640	225,438	225,438
12-1909	State Trooper	FT	P	AA	Saint Marys	99	77J	12.0		141,152	0	21,612	85,005	247,769	247,769
12-1910	Court Services Officer	FT	P	AA	Bethel	550	74B / C	12.0		101,625	0	9,621	64,117	175,363	175,363
12-1911	State Trooper	FT	P	AA	Togiak	99	77C / D	12.0		121,493	0	18,785	75,976	216,254	216,254
12-1915	Court Services Officer	FT	P	AA	Anchor Point	500	74J / K	12.0		80,165	0	7,860	54,631	142,656	142,656
12-1916	Court Services Officer	FT	P	AA	Kenai	500	74M / N	12.0		88,143	0	8,689	58,228	155,060	155,060
12-1919	Captain DPS	FT	P	SS	Anchorage	99	25R	12.0		197,867	2,730	4,800	101,859	307,256	307,256
12-1923	State Trooper	FT	P	AA	Togiak	99	77P	12.0		176,060	0	22,881	97,565	296,506	296,506
12-1925	State Trooper	FT	P	AA	Wasilla	100	77F / J	12.0		100,433	0	23,413	69,264	193,110	193,110
12-1926	Sergeant DPS	FT	P	AA	Fairbanks	99	79M / N	12.0		148,280	0	30,800	90,669	269,749	269,749
12-1927	State Trooper	FT	P	AA	Anchor Point	99	77J / K	12.0		108,091	0	21,518	71,618	201,227	201,227
12-1928	State Trooper	FT	P	AA	Delta Junction	115	77F	12.0		114,878	0	18,642	73,216	206,736	206,736
12-1929	State Trooper	FT	P	AA	Soldotna	100	77C / D	12.0		92,810	0	17,575	63,765	174,150	174,150
12-1932	Court Services Officer	FT	P	AA	Fairbanks	503	74J / K	12.0		82,271	0	9,074	55,987	147,332	147,332
12-1933	Court Services Officer	FT	P	AA	Palmer	500	74O	12.0		94,744	0	9,296	61,173	165,213	165,213
12-1944	Court Services Officer	FT	P	AA	Palmer	500	74O	12.0		94,744	0	10,296	61,581	166,621	166,621
12-1945	Court Services Officer	FT	P	AA	Kenai	500	74O / P	12.0		98,153	0	10,296	62,974	171,423	171,423
12-1946	Court Services Officer	FT	P	AA	Fairbanks	503	74F	12.0		78,250	0	9,031	54,327	141,608	141,608
12-1947	Court Services Officer	FT	P	AA	Juneau	505	74O	12.0		99,486	0	9,724	63,285	172,495	172,495
12-1948	Court Services Officer	FT	P	AA	Fairbanks	503	74D / E	12.0		74,399	0	8,309	52,459	135,167	135,167
12-1949	Court Services Officer	FT	P	AA	Palmer	500	74N	12.0		91,312	0	8,987	59,645	159,944	159,944
12-1951	Office Assistant 2	FT	A	GP	Palmer	100	10D / E	12.0		40,760	1,435	0	35,649	77,844	77,844
12-1965	Court Services Officer	FT	P	AA	Bethel	550	74C / D	12.0		105,680	0	756	62,152	168,588	168,588

Note: If a position is split, an asterisk (*) will appear in the Split/Count column. If the split position is also counted in the component, two asterisks (**) will appear in this column.
[No valid job title] appearing in the Job Class Title indicates that the PCN has an invalid class code or invalid range for the class code effective date of this scenario.

Personal Services Expenditure Detail
Department of Public Safety

Scenario: FY2024 Governor (19867)
Component: Alaska State Trooper Detachments (2325)
RDU: Alaska State Troopers (160)

PCN	Job Class Title	Time Status	Retire Code	Barg Unit	Location	Salary Sched	Range / Step	Comp Months	Split / Count	Annual Salaries	COLA	Premium Pay	Annual Benefits	Total Costs	UGF Amount
12-1971	Court Services Officer	FT	P	AA	Bethel	550	74N	12.0		136,968	0	13,602	80,180	230,750	230,750
12-1977	Office Assistant 4	FT	A	SS	Soldotna	500	12A / B	12.0		45,178	636	0	40,128	85,942	85,942
12-1997	Sergeant DPS	FT	P	AA	Bethel	99	79O / P	12.0		224,773	0	31,564	117,493	373,830	373,830
12-2002	State Trooper	FT	P	AA	Selawik	160	77C / D	12.0		148,491	0	30,821	90,750	270,062	270,062
12-2008	State Trooper	FT	P	AA	Selawik	99	77Q	12.0		233,797	0	42,875	124,553	401,225	401,225
12-2037	State Trooper	FT	P	AA	Bethel	99	77N / O	12.0		188,663	0	24,404	102,470	315,537	315,537
12-2044	State Trooper	FT	P	AA	Fairbanks	103	77E / F	12.0		100,446	0	16,600	66,486	183,532	183,532
12-2045	State Trooper	FT	P	AA	Fairbanks	103	77E / F	12.0		102,618	0	20,938	69,145	192,701	192,701
12-2046	State Trooper	FT	P	AA	Fairbanks	103	77D / E	12.0		98,936	0	18,313	66,569	183,818	183,818
12-2047	State Trooper	FT	P	AA	Fairbanks	103	77C / D	12.0		93,353	0	23,020	66,211	182,584	182,584
12-2048	State Trooper	FT	P	AA	Fairbanks	103	77M	12.0		119,226	0	26,437	78,176	223,839	223,839
12-2049	State Trooper	FT	P	AA	Soldotna	100	77K / L	12.0		109,554	0	18,603	71,025	199,182	199,182
12-2050	State Trooper	FT	P	AA	Soldotna	100	77D / E	12.0		95,907	0	18,160	65,269	179,336	179,336
12-2051	State Trooper	FT	P	AA	Soldotna	99	77J / K	12.0		116,617	0	20,942	74,865	212,424	212,424
12-2052	State Trooper	FT	P	AA	Palmer	100	77E / F	12.0		96,796	0	21,671	67,066	185,533	185,533
12-2053	State Trooper	FT	P	AA	Wasilla	100	77K	12.0		107,536	0	17,595	69,789	194,920	194,920
12-2054	State Trooper	FT	P	AA	Wasilla	100	77E / F	12.0		99,601	0	19,981	67,522	187,104	187,104
12-2055	State Trooper	FT	P	AA	Juneau	105	77D / E	12.0		100,815	0	23,703	69,538	194,056	194,056
12-2056	State Trooper	FT	P	AA	Palmer	99	77C / D	12.0		97,069	0	20,857	66,845	184,771	184,771
12-2057	State Trooper	FT	P	AA	Hooper Bay	99	77D / E	12.0		123,376	0	19,310	76,960	219,646	219,646
12-2058	State Trooper	FT	P	AA	Hooper Bay	99	77Q	12.0		219,208	0	30,910	115,334	365,452	365,452
12-2061	State Trooper	FT	P	AA	Anchorage	100	77J	12.0		103,646	0	13,101	66,364	183,111	183,111
12-2063	State Trooper	FT	P	AA	Anchorage	100	77L	12.0		111,571	0	14,031	69,981	195,583	195,583
12-2064	State Trooper	FT	P	AA	Anchorage	100	77C / D	12.0		92,810	0	11,799	61,405	166,014	166,014
12-2088	Court Services Officer	FT	P	AA	Juneau	505	74M / N	12.0		93,572	0	6,087	59,383	159,042	159,042
12-2089	Court Services Officer	FT	A	AA	Dillingham	537	74D / E	12.0		100,298	0	6,542	62,317	169,157	169,157
12-2090	Court Services Officer	FT	P	AA	Kodiak	511	74B / C	12.0		75,459	0	4,954	51,521	131,934	131,934
12-2091	State Trooper	FT	A	AA	Dillingham	99	77C / D	12.0		133,146	0	18,083	80,450	231,679	231,679
12-2095	Court Services Officer	FT	A	AA	Juneau	505	74C / D	12.0		74,110	0	5,031	51,002	130,143	130,143
12-2096	Court Services Officer	FT	A	AA	Kotzebue	560	74D / E	12.0		114,401	0	7,270	68,375	190,046	190,046
12-2097	State Trooper	FT	P	AA	Anchor Point	99	77F / J	12.0		105,041	0	13,101	66,934	185,076	185,076
12-2098	State Trooper	FT	P	AA	Anchor Point	100	77E / F	12.0		99,601	0	12,212	64,348	176,161	176,161
12-2099	State Trooper	FT	P	AA	Bethel	99	77F / J	12.0		135,222	0	16,374	80,600	232,196	232,196
12-2100	State Trooper	FT	A	AA	Emmonak	99	77J / K	12.0		137,873	0	16,960	81,922	236,755	236,755
12-2101	State Trooper	FT	P	AA	Glennallen	99	77E / F	12.0		111,712	0	13,898	69,984	195,594	195,594
12-2102	State Trooper	FT	A	AA	Unalakleet	99	77D / E	12.0		119,778	0	14,842	73,665	208,285	208,285
12-2104	State Trooper	FT	A	AA	Saint Marys	150	77C / D	12.0		139,214	0	17,321	82,617	239,152	239,152
12-2106	State Trooper	FT	P	AA	Kotzebue	160	77D / E	12.0		153,628	0	18,425	88,230	260,283	260,283
12-2109	Criminal Justice Technician	FT	A	GP	Ketchikan	100	14B / C	12.0		50,379	1,774	0	39,578	91,731	91,731

Note: If a position is split, an asterisk (*) will appear in the Split/Count column. If the split position is also counted in the component, two asterisks (**) will appear in this column.
[No valid job title] appearing in the Job Class Title indicates that the PCN has an invalid class code or invalid range for the class code effective date of this scenario.

Personal Services Expenditure Detail
Department of Public Safety

Scenario: FY2024 Governor (19867)
Component: Alaska State Trooper Detachments (2325)
RDU: Alaska State Troopers (160)

PCN	Job Class Title	Time Status	Retire Code	Barg Unit	Location	Salary Sched	Range / Step	Comp Months	Split / Count	Annual Salaries	COLA	Premium Pay	Annual Benefits	Total Costs	UGF Amount
	2														
12-2112	Office Assistant 2	FT	A	GP	Bethel	150	10B / C	12.0		58,484	2,059	0	42,889	103,432	103,432
12-2113	Criminal Justice Technician	FT	A	GP	Anchorage	100	14N	12.0		68,913	2,427	0	47,150	118,490	118,490
	2														
12-2114	Office Assistant 2	FT	A	GP	Ketchikan	100	10B / C	12.0		38,750	1,364	0	34,828	74,942	74,942
12-2119	Public Safety Technician 2	FT	A	GP	Bethel	150	11B / C	12.0		62,517	2,201	0	44,537	109,255	109,255
12-2122	State Trooper	FT	P	AA	Tok	115	77C / D	12.0		106,725	0	13,455	67,766	187,946	187,946
12-2123	State Trooper	FT	P	AA	Palmer	100	77C / D	12.0		92,810	0	11,799	61,405	166,014	166,014
12-2124	State Trooper	FT	P	AA	Palmer	100	77C / D	12.0		92,810	0	11,799	61,405	166,014	166,014
12-2125	State Trooper	FT	P	AA	Wasilla	100	77C / D	12.0		92,810	0	11,799	61,405	166,014	166,014
12-2126	Victim/Witness Paralegal 2	FT	A	GP	Soldotna	100	16A / B	12.0		56,394	2,139	4,338	43,808	106,679	106,679
12-2127	Victim/Witness Paralegal 2	FT	A	GP	Nome	137	16A / B	12.0		77,259	2,930	5,943	52,987	139,119	139,119
12-2128	Victim/Witness Paralegal 2	FT	A	GP	Fairbanks	103	16A / B	12.0		58,091	2,203	4,468	44,554	109,316	109,316
12-2129	Sergeant DPS	FT	P	AA	Anchorage	100	79D / E	12.0		109,554	0	13,551	68,961	192,066	192,066
12-2134	Program Coordinator 1	FT	A	SS	Anchorage	100	18A / B	12.0		68,765	969	0	49,763	119,497	119,497
12-2136	Criminal Justice Technician	FT	A	GP	Anchorage	100	12B / C	12.0		44,343	1,682	3,411	38,506	87,942	87,942
	1														
12-2145	Criminal Justice Technician	FT	A	GP	Soldotna	100	12A / B	12.0		42,939	1,628	3,303	37,889	85,759	85,759
	1														
12-3049	Mail Services Courier	FT	A	GG	Anchorage	99	9R	12.0		55,361	1,987	1,065	42,049	100,462	0
12-3053	Office Assistant 3	FT	A	GP	Kodiak	111	11A / B	12.0		44,831	1,579	0	37,312	83,722	83,722
12-3107	Court Services Officer	FT	P	AA	Ketchikan	5EE	74O / P	12.0		105,505	0	9,937	65,831	181,273	181,273
12-3162	Administrative Assistant 2	FT	A	GP	Anchorage	100	14C / D	12.0		51,755	1,822	0	40,141	93,718	93,718
12-3829	Court Services Officer	FT	P	AA	Palmer	500	74M / N	12.0		89,934	0	9,689	59,369	158,992	158,992
12-3854	Office Assistant 3	FT	A	GP	Craig	100	11M / N	12.0		54,561	1,921	0	41,287	97,769	97,769
12-4204	Court Services Officer	FT	P	AA	Kenai	500	74K / L	12.0		82,274	0	8,126	55,601	146,001	146,001
12-4408	Court Services Officer	FT	P	AA	Fairbanks	503	74F	12.0		78,250	0	7,809	53,828	139,887	139,887
12-N09007	State Trooper	NP	N	AA	Fairbanks	103	77A	12.0		85,613	0	756	11,608	97,977	97,977
12-N17007	State Trooper	NP	N	AA	Anchorage	100	77A	12.0		83,117	0	756	11,273	95,146	95,146
12-N17008	State Trooper	NP	N	AA	Anchorage	100	77A	12.0		83,117	0	756	11,273	95,146	95,146
12-N18003	State Trooper	NP	N	AA	Fairbanks	103	77A	12.0		85,613	0	756	11,608	97,977	97,977
12-N18004	State Trooper	NP	N	AA	Fairbanks	103	77A	12.0		85,613	0	756	11,608	97,977	97,977
12-N20001	Public Safety Technician 2	NP	N	GP	Anchorage	100	11A	12.0		39,312	1,138	0	25,190	65,640	65,640

Note: If a position is split, an asterisk (*) will appear in the Split/Count column. If the split position is also counted in the component, two asterisks (**) will appear in this column. [No valid job title] appearing in the Job Class Title indicates that the PCN has an invalid class code or invalid range for the class code effective date of this scenario.

Personal Services Expenditure Detail
Department of Public Safety

Scenario: FY2024 Governor (19867)
Component: Alaska State Trooper Detachments (2325)
RDU: Alaska State Troopers (160)

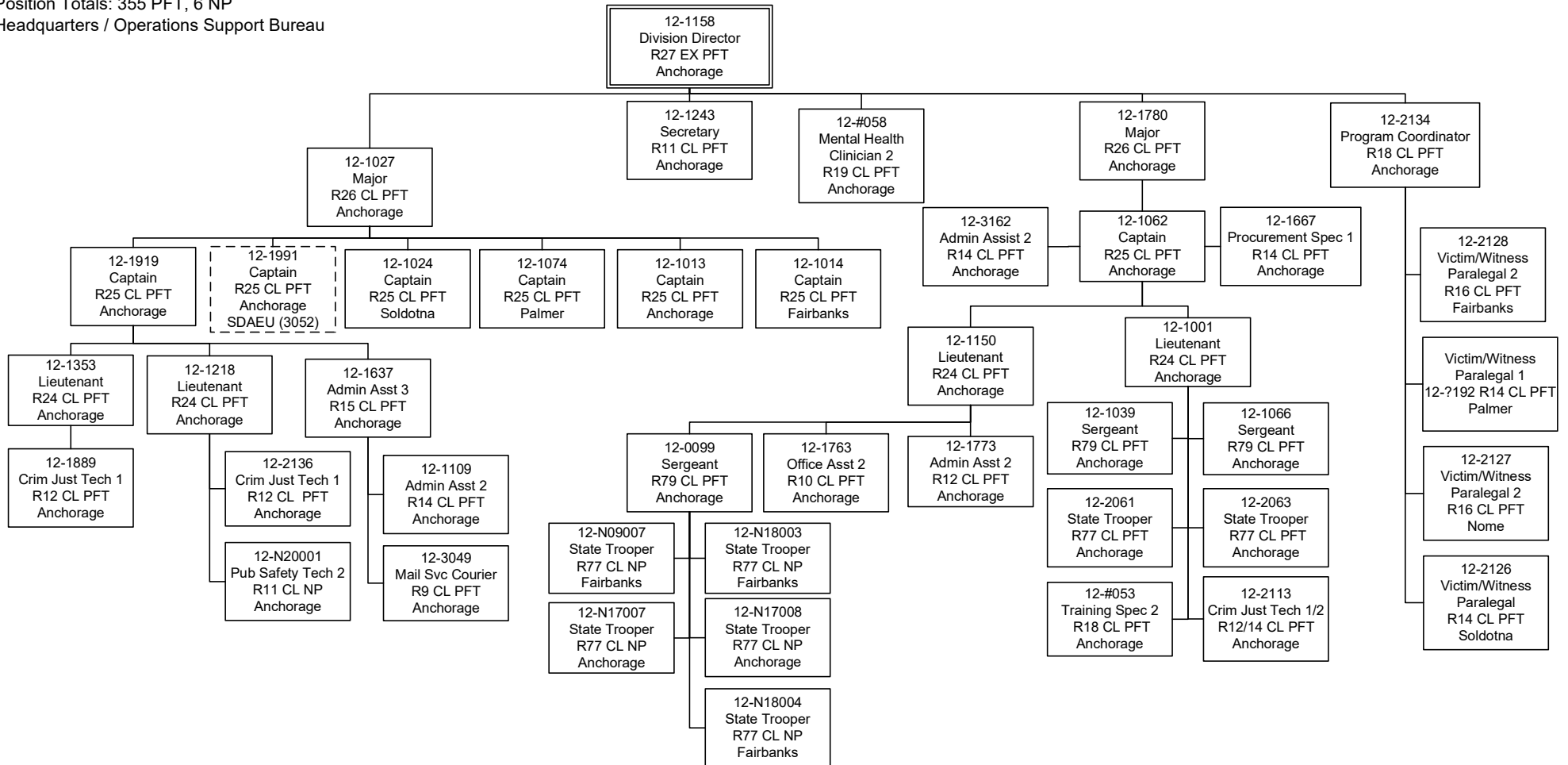
PCN	Job Class Title	Time Status	Retire Code	Barg Unit	Location	Salary Sched	Range / Step	Comp Months	Split / Count	Annual Salaries	COLA	Premium Pay	Annual Benefits	Total Costs	UGF Amount
	Total Positions		New	Deleted										Total Salary Costs:	39,171,619
														Total COLA:	190,138
	Full Time Positions:	355	4	0										Total Premium Pay:	5,403,287
	Part Time Positions:	0	0	0										Total Benefits:	24,686,775
	Non Permanent Positions:	6	0	0											
	Positions in Component:	361	4	0											
	Total Component Months:	4,332.0													
														Total Pre-Vacancy:	69,451,819
														Minus Vacancy Adjustment of 7.44%:	(5,166,319)
														Total Post-Vacancy:	64,285,500
														Plus Lump Sum Premium Pay:	970,000
														Personal Services Line 100:	65,255,500

PCN Funding Sources:	Pre-Vacancy	Post-Vacancy	Percent
1004 General Fund Receipts	69,288,657	64,134,475	99.77%
1007 Interagency Receipts	163,162	151,025	0.23%
Total PCN Funding:	69,451,819	64,285,500	100.00%

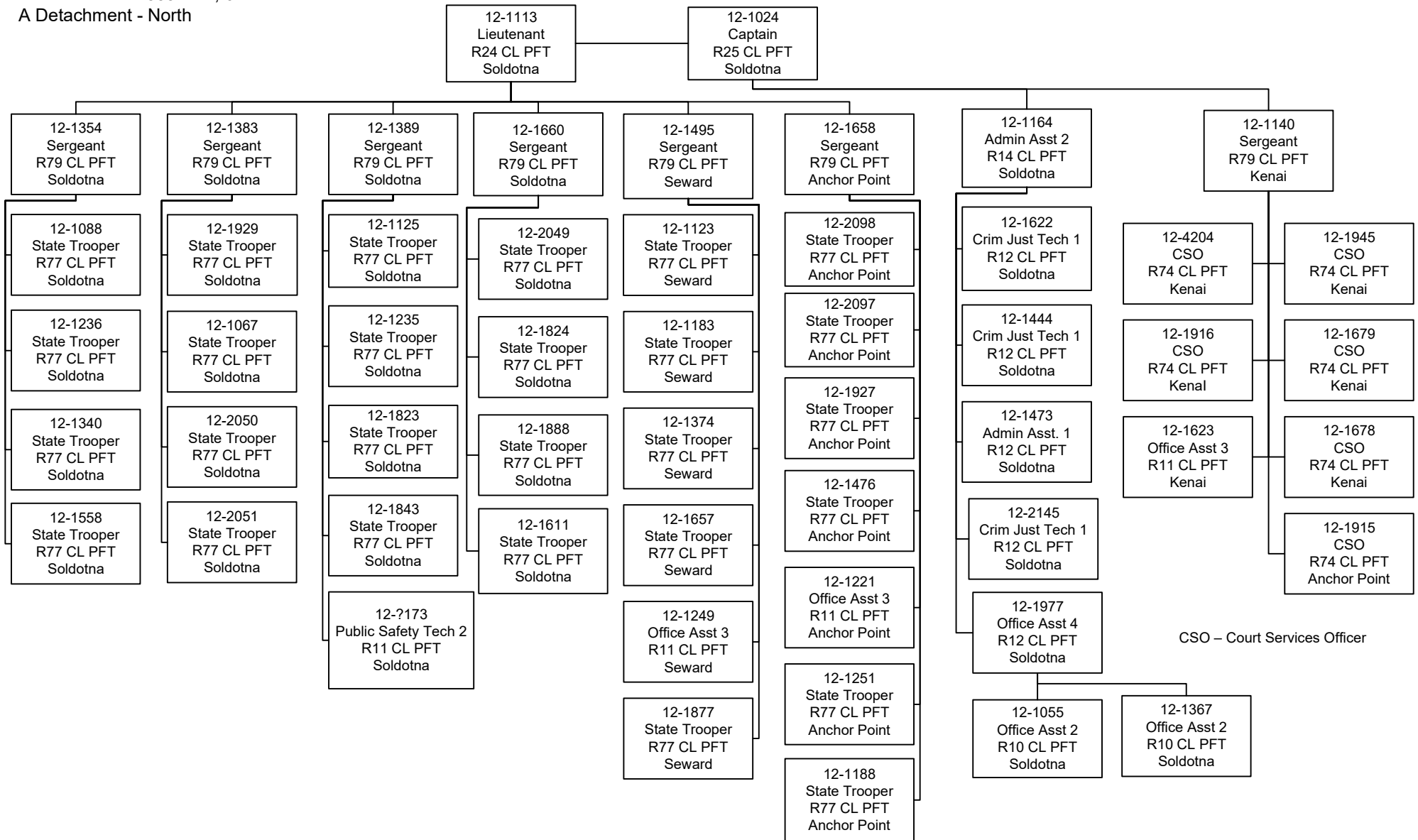
Lump Sum Funding Sources:	Amount	Percent
1007 General Fund Receipts	970,000	100.00%
Total Lump Sum Funding:	970,000	100.00%

Note: If a position is split, an asterisk (*) will appear in the Split/Count column. If the split position is also counted in the component, two asterisks (**) will appear in this column. [No valid job title] appearing in the Job Class Title indicates that the PCN has an invalid class code or invalid range for the class code effective date of this scenario.

Department of Public Safety
 RDU: Alaska State Troopers (160)
 Component: Alaska State Trooper Detachments (2325)
 FY2024 Governor's Budget
 Position Totals: 355 PFT, 6 NP
 Headquarters / Operations Support Bureau



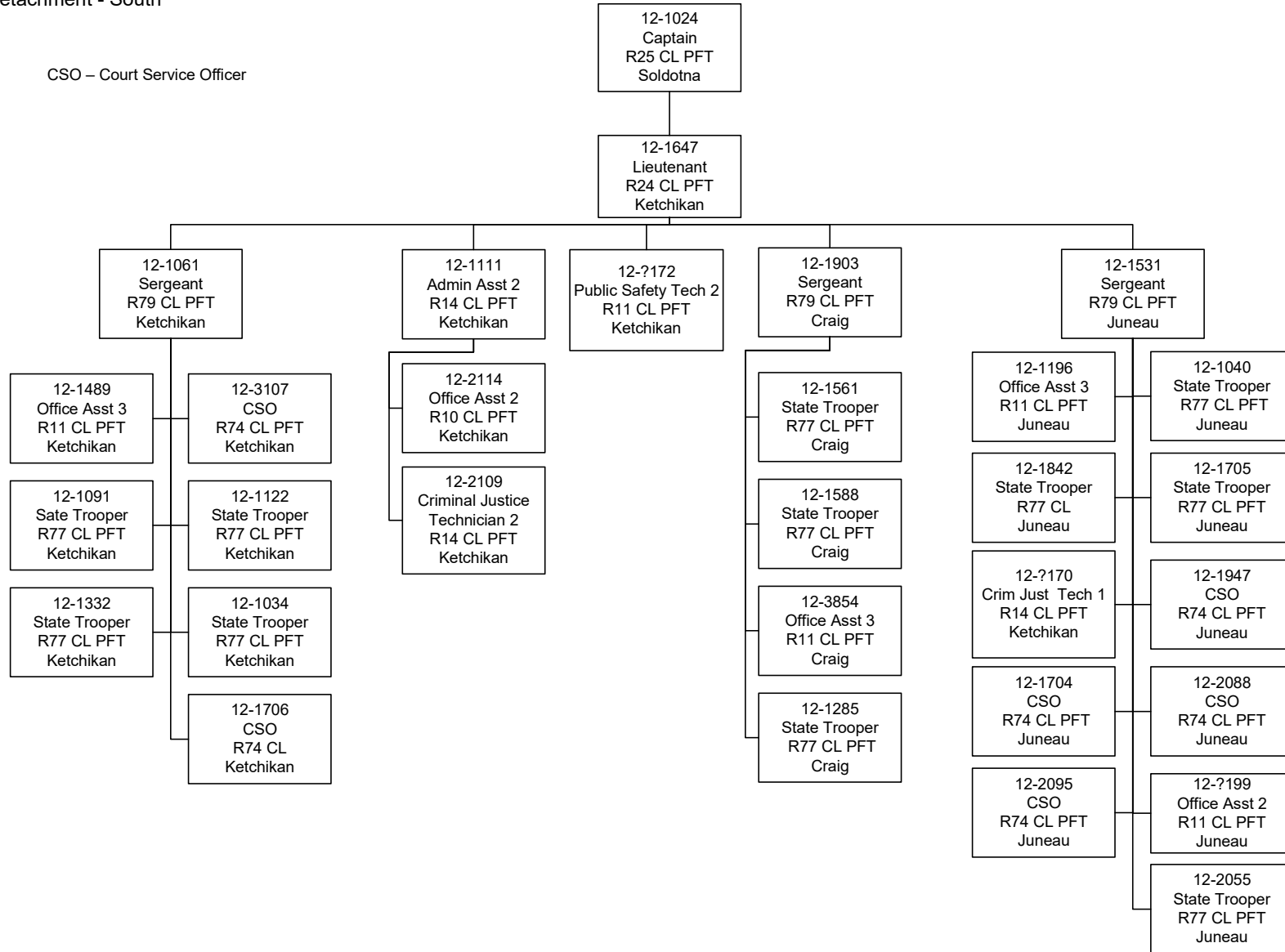
Department of Public Safety
 RDU: Alaska State Troopers (160)
 Component: Alaska State Trooper Detachments (2325)
 FY2024 Governor's Budget
 Position Totals: 355 PFT, 6 NP
 A Detachment - North



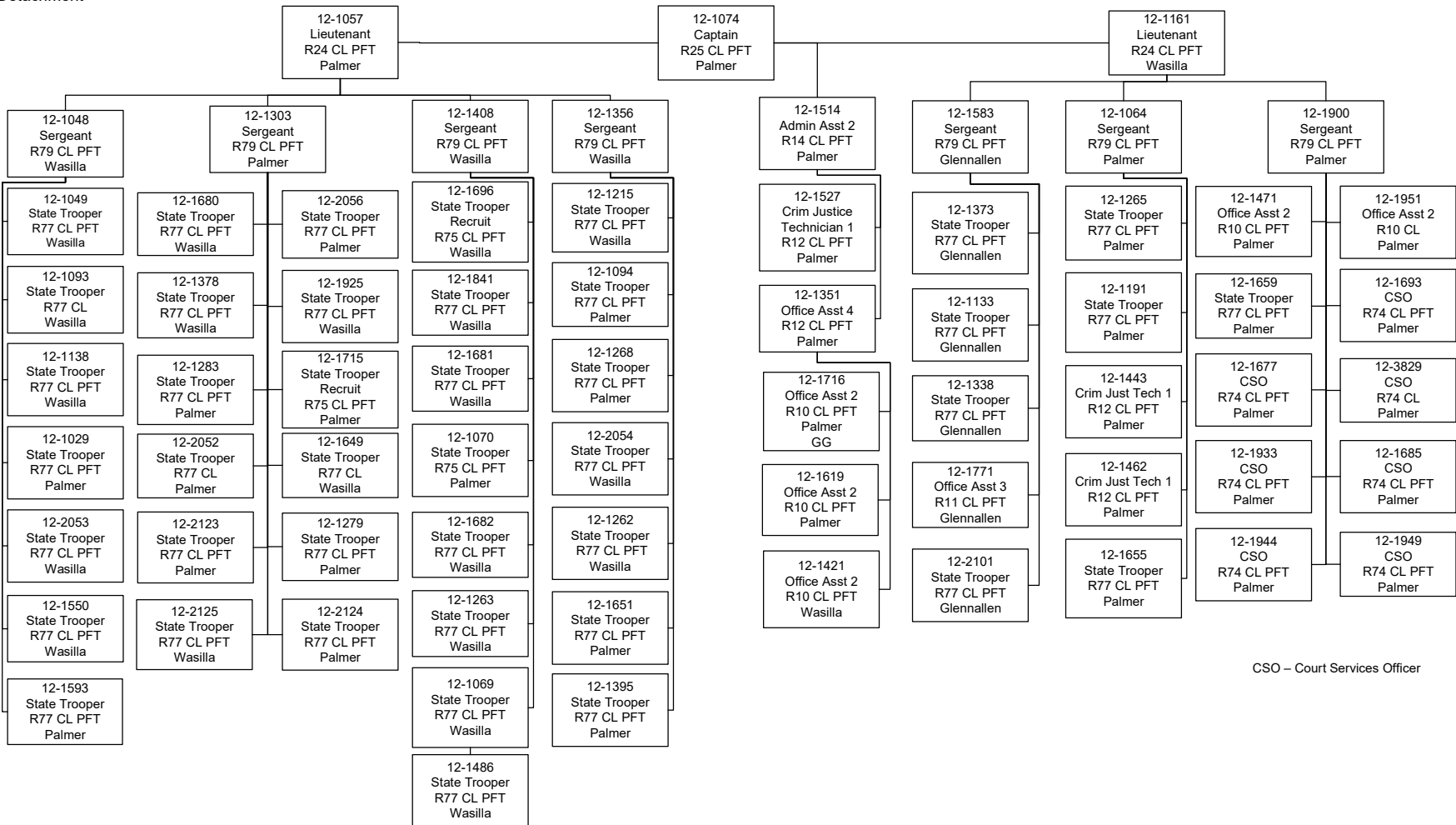
CSO – Court Services Officer

Department of Public Safety
 RDU: Alaska State Troopers (160)
 Component: Alaska State Trooper Detachments (2325)
 FY2024 Governor's Budget
 Position Totals: 355 PFT, 6 NP
 A Detachment - South

CSO – Court Service Officer



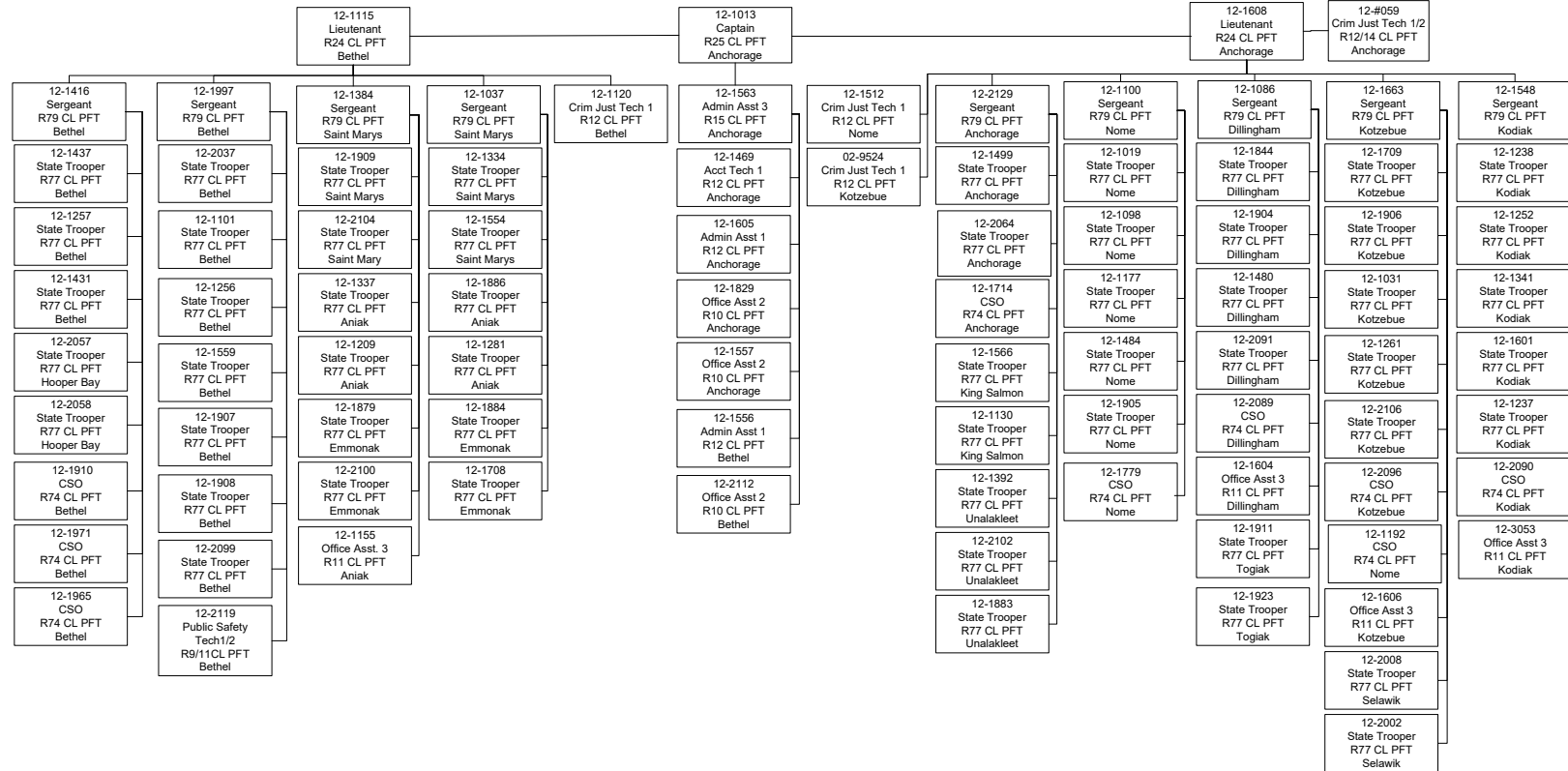
Department of Public Safety
 RDU: Alaska State Troopers (160)
 Component: Alaska State Trooper Detachments (2325)
 FY2024 Governor's Budget
 Position Totals: 355 PFT, 6 NP
 B Detachment



CSO – Court Services Officer

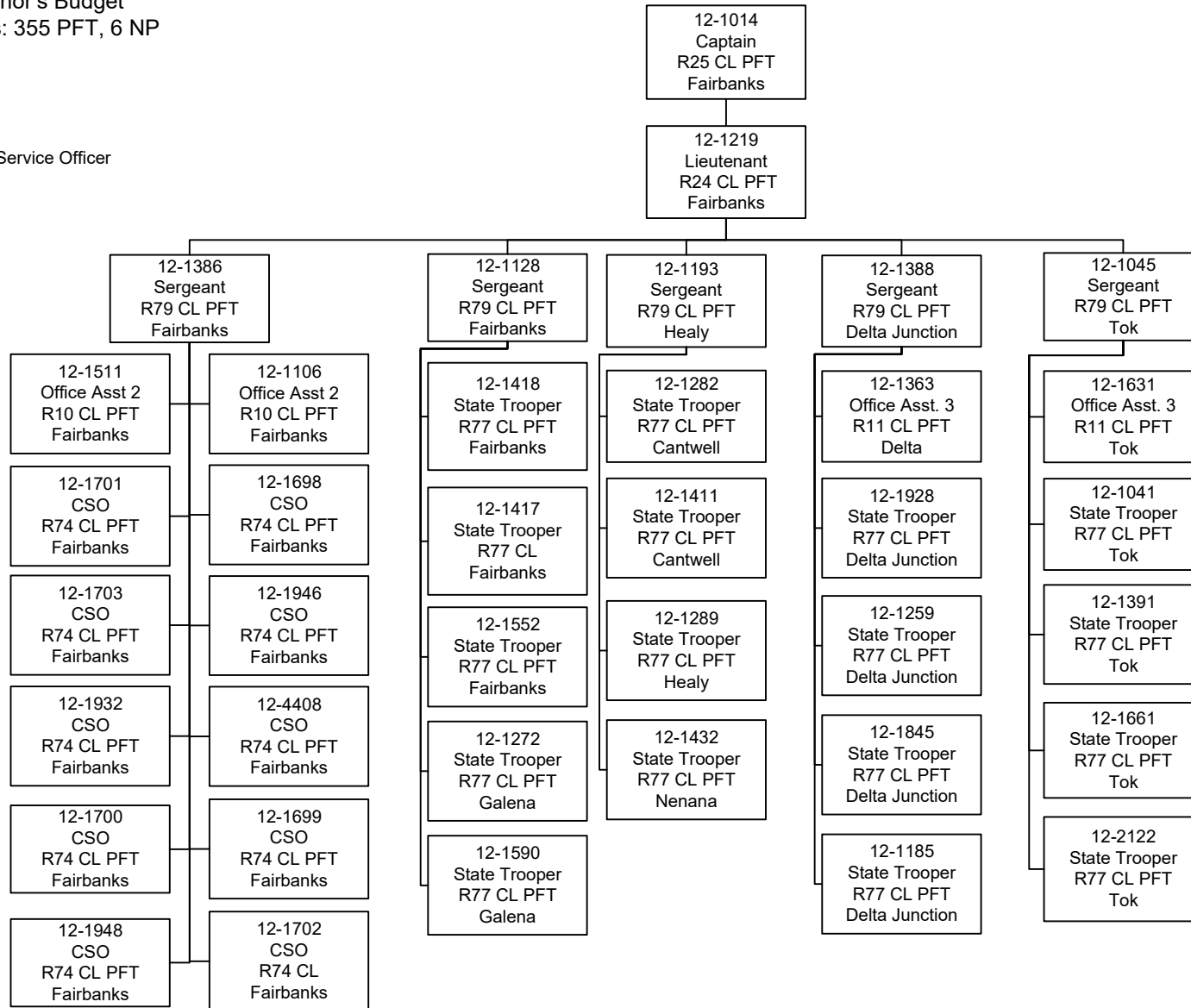
Department of Public Safety
 RDU: Alaska State Troopers (160)
 Component: Alaska State Trooper Detachments (2325)
 FY2024 Governor's Budget
 Position Totals: 355 PFT, 6 NP
 C Detachment

CSO – Court Service Officer



Department of Public Safety
 RDU: Alaska State Troopers (160)
 Component: Alaska State Trooper Detachments (2325)
 FY2024 Governor's Budget
 Position Totals: 355 PFT, 6 NP
 D Detachment

CSO-Court Service Officer



Department of Public Safety
 RDU: Alaska State Troopers (160)
 Component: Alaska State Trooper Detachments (2325)
 FY2024 Governor's Budget
 Position Totals: 355 PFT, 6 NP
 D Detachment

