

# **State of Alaska FY2024 Governor's Operating Budget**

## **Department of Transportation/Public Facilities Measurement Standards & Commercial Vehicle Compliance Component Budget Summary**

**Component: Measurement Standards & Commercial Vehicle Compliance**

**Contribution to Department's Mission**

Measurement Standards & Commercial Vehicle Compliance's contribution to "Keep Alaska Moving through Service and Infrastructure" is to enhance the safety of the motoring public, preserve public infrastructure, and ensure marketplace confidence and equitable trade.

**Core Services**

- Issue oversize/overweight permits for vehicles and loads.
- Operate nine fixed, inspection/weigh stations at key locations (Hans Roelle Memorial Weigh Station, Glenn Highway Southbound, Potter, Sterling, Fox, Ester, Richardson North and Southbound, and Tok).
- Conduct size and weight enforcement along with safety inspections.
- Provide safety and hazardous material transport training and coordination of secondary size, weight, and safety enforcement activities with other state and local enforcement agencies.
- Inspect and test commercial weighing and measuring devices to ensure compliance with law and regulation.
- Test prepackaged commodities by weight, volume, or count and evaluate retail-scanning systems to ensure consumer confidence.
- Provide calibration and certification for the standards used by Weights and Measures Inspectors and other government agencies and industries.

**Major Component Accomplishments in 2022**

- Conducted 7,910 commercial motor driver/vehicle safety inspections with 865 vehicles placed out-of-service for safety violations and 118 drivers placed out-of-service for safety violations.
- The Intelligent Roadside Operations Computer at the Glenn Highway Inspection/Weigh Station processed 33,101 credential checks on vehicles and of those 31,700 were bypassed.
- 98.05% of vehicles weighed were in compliance with size and weight limits.
- Issued 12,539 oversize/overweight permits helping to preserve infrastructure and increase safety of the traveling public.
- Inspected 7,438 scales, 4,787 meters, and 296 accessories (total of 12,521 in support of industries including construction, fishing, mining, and petroleum).
- Tested and registered 1,166 scales used in the regulation of the commercial marijuana industry.

**Key Component Challenges**

- Oversize/overweight permitting systems are reaching end of life.
- Lack of journeyman Weights and Measures Inspectors for testing and inspection of petroleum meters and scales throughout Alaska.

**Significant Changes in Results to be Delivered in FY2024**

- Kenai Peninsula region Weights and Measures inspections to be conducted out of the Sterling weigh station facilities.
- License plate reader at the Hans Roelle Memorial Weigh Station to increase the efficiency screening of commercial motor vehicles.

**Statutory and Regulatory Authority**

- AS 45.75 Weights & Measures Act
- AS 19.10.060 Size, Weight, & Load Provisions; Restriction on Use of Highways; Commercial Vehicle Inspection Program
- AS 19.10.300 Financial Responsibility (Commercial Motor Vehicle)

---

**Component — Measurement Standards & Commercial Vehicle Compliance**

---

AS 19.10.310 Commercial Motor Vehicle Safety Inspections  
17 AAC 25 Truck Size, Weight and Safety Regulations  
17 AAC 28 Busses  
17 AAC 90 Specifications, Tolerances, and Regulations for Weighing and  
Measuring Devices

<b>Contact Information</b>
<p><b>Contact:</b> Daniel V. Smith, Director <b>Phone:</b> (907) 365-1210 <b>E-mail:</b> Dan.Smith1@alaska.gov</p>

<b>Measurement Standards &amp; Commercial Vehicle Compliance Personal Services Information</b>				
<b>Authorized Positions</b>			<b>Personal Services Costs</b>	
	<b>FY2023 Management Plan</b>	<b>FY2024 Governor</b>		
Full-time	60	60	Annual Salaries	3,742,054
Part-time	0	0	COLA	118,136
Nonpermanent	0	0	Premium Pay	194,365
			Annual Benefits	2,794,615
			<i>Less 7.90% Vacancy Factor</i>	<i>(540,870)</i>
			Lump Sum Premium Pay	0
<b>Totals</b>	<b>60</b>	<b>60</b>	<b>Total Personal Services</b>	<b>6,308,300</b>

<b>Position Classification Summary</b>					
<b>Job Class Title</b>	<b>Anchorage</b>	<b>Fairbanks</b>	<b>Juneau</b>	<b>Others</b>	<b>Total</b>
Accountant 3	1	0	0	0	1
Accounting Technician 1	1	0	0	0	1
Administrative Assistant 2	1	0	0	0	1
Administrative Officer 2	1	0	0	0	1
Chf Wm/Prmts	1	1	0	0	2
Comm Veh Ci 1	7	1	0	0	8
Comm Veh Ci 2	7	5	0	4	16
Comm Veh Ci 3	2	2	0	1	5
Comm Veh Ci 4	2	1	0	1	4
Comm Veh Ci 5	1	0	0	0	1
Division Director - Px	1	0	0	0	1
Grants Administrator 2	1	0	0	0	1
Grants Administrator 3	1	0	0	0	1
Ms Stand Spvr	1	0	0	0	1
Program Coordinator 2	1	0	0	0	1
Project Assistant	1	0	0	0	1
Research Analyst 2	1	0	0	0	1
Secretary	1	0	0	0	1
State Metrologist 1	1	0	0	0	1
State Metrologist 2	1	0	0	0	1
Weights & Measures Inspector 1	1	0	0	0	1
Weights & Measures Inspector 2	1	1	1	0	3
Wm Inspect Trn	5	0	0	1	6
<b>Totals</b>	<b>41</b>	<b>11</b>	<b>1</b>	<b>7</b>	<b>60</b>

**Component Detail All Funds**  
**Department of Transportation/Public Facilities**

**Component:** Measurement Standards & Commercial Vehicle Compliance (2332)  
**RDU:** Administration and Support (333)

Non-Formula Component

	FY2022 Actuals	FY2023 Conference Committee	FY2023 Authorized	FY2023 Management Plan	FY2024 Governor	FY2023 Management Plan vs FY2024 Governor	
71000 Personal Services	5,710.1	6,162.2	6,171.1	6,171.1	6,308.3	137.2	2.2%
72000 Travel	159.3	158.6	158.6	158.6	238.6	80.0	50.4%
73000 Services	748.3	987.4	1,034.0	1,034.0	1,034.0	0.0	0.0%
74000 Commodities	93.9	105.0	105.0	105.0	105.0	0.0	0.0%
75000 Capital Outlay	36.1	39.4	39.4	39.4	39.4	0.0	0.0%
77000 Grants, Benefits	0.0	0.0	0.0	0.0	0.0	0.0	0.0%
78000 Miscellaneous	0.0	0.0	0.0	0.0	0.0	0.0	0.0%
<b>Totals</b>	<b>6,747.7</b>	<b>7,452.6</b>	<b>7,508.1</b>	<b>7,508.1</b>	<b>7,725.3</b>	<b>217.2</b>	<b>2.9%</b>
<b>Fund Sources:</b>							
1002 Fed Rcpts (Fed)	0.0	0.0	8.2	8.2	0.0	-8.2	-100.0%
1004 Gen Fund (UGF)	1,430.6	1,247.4	1,249.4	1,249.4	1,268.0	18.6	1.5%
1005 GF/Prgm (DGF)	2,521.1	3,166.0	3,191.0	3,191.0	3,339.2	148.2	4.6%
1007 I/A Rcpts (Other)	5.1	15.0	15.0	15.0	15.0	0.0	0.0%
1061 CIP Rcpts (Other)	2,175.4	2,294.0	2,311.3	2,311.3	2,364.8	53.5	2.3%
1215 UCR Rcpts (Other)	615.5	730.2	733.2	733.2	738.3	5.1	0.7%
<b>Unrestricted General (UGF)</b>	<b>1,430.6</b>	<b>1,247.4</b>	<b>1,249.4</b>	<b>1,249.4</b>	<b>1,268.0</b>	<b>18.6</b>	<b>1.5%</b>
<b>Designated General (DGF)</b>	<b>2,521.1</b>	<b>3,166.0</b>	<b>3,191.0</b>	<b>3,191.0</b>	<b>3,339.2</b>	<b>148.2</b>	<b>4.6%</b>
<b>Other Funds</b>	<b>2,796.0</b>	<b>3,039.2</b>	<b>3,059.5</b>	<b>3,059.5</b>	<b>3,118.1</b>	<b>58.6</b>	<b>1.9%</b>
<b>Federal Funds</b>	<b>0.0</b>	<b>0.0</b>	<b>8.2</b>	<b>8.2</b>	<b>0.0</b>	<b>-8.2</b>	<b>-100.0%</b>
<b>Positions:</b>							
Permanent Full Time	60	60	60	60	60	0	0.0%
Permanent Part Time	0	0	0	0	0	0	0.0%
Non Permanent	0	0	0	0	0	0	0.0%

**Change Record Detail - Multiple Scenarios with Descriptions**  
**Department of Transportation/Public Facilities**

**Component:** Measurement Standards & Commercial Vehicle Compliance (2332)

**RDU:** Administration and Support (333)

Scenario/Change Record Title	Trans Type	Totals	Personal Services	Travel	Services	Commodities	Capital Outlay	Grants, Benefits	Miscellaneous	Positions		NP
										PFT	PPT	
***** Changes From FY2023 Conference Committee To FY2023 Authorized *****												
<b>FY2023 Conference Committee</b>												
	ConfCom	7,452.6	6,162.2	158.6	987.4	105.0	39.4	0.0	0.0	60	0	0
1004 Gen Fund		1,247.4										
1005 GF/Prgm		3,166.0										
1007 I/A Rcpts		15.0										
1061 CIP Rcpts		2,294.0										
1215 UCR Rcpts		730.2										
<b>Align Authority for Unallocated Rates Adjustments</b>												
	Unalloc	46.6	0.0	0.0	46.6	0.0	0.0	0.0	0.0	0	0	0
1002 Fed Rcpts		8.2										
1004 Gen Fund		1.1										
1005 GF/Prgm		18.6										
1061 CIP Rcpts		15.7										
1215 UCR Rcpts		3.0										

Reallocate unallocated rate adjustments across department's components.

Unallocated Rate Adjustments:

- FY2023 Administrative Systems Rate Adjusted Base Change \$101.4
- FY2023 Administrative Systems Upgrade Ongoing Cost Increases \$594.1
- FY2023 Human Resources Rate Adjusted Base Change \$619.2
- FY2023 Human Resources Rate AspireAlaska \$112.0
- FY2023 Office of Information Technology Core Services Rate Adjusted Base Change \$80.8
- FY2023 Office of Information Technology Core Services Rate Infrastructure Upkeep Increase \$229.9
- FY2023 Office of Information Technology Core Services Rate Software Increases \$509.9
- FY2023 Office of Information Technology Mainframe Increases -\$4.3
- FY2023 Office of Information Technology Other Non-Core Adjusted Base \$2.4
- FY2023 Travel and Accounts Payable Rate Adjusted Base Change -\$34.7

Department Components:

- Facilities Services \$99.9
- Leases \$4.0
- Commissioner's Office \$10.3
- Contracting and Appeals \$1.7
- Equal Employment and Civil Rights \$7.8
- Internal Review \$3.0
- Statewide Administrative Services \$47.6
- Information Systems and Services \$22.4
- Statewide Procurement \$18.3
- Central Region Support Services \$7.1

**Change Record Detail - Multiple Scenarios with Descriptions**  
**Department of Transportation/Public Facilities**

**Component:** Measurement Standards & Commercial Vehicle Compliance (2332)

**RDU:** Administration and Support (333)

Scenario/Change Record Title	Trans Type	Totals	Personal Services	Travel	Services	Commodities	Capital Outlay	Grants, Benefits	Miscellaneous	Positions		NP
										PFT	PPT	
Northern Region Support Services		\$4.7										
Southcoast Region Support Services		\$22.1										
Statewide Aviation		\$26.3										
Program Development and Statewide Planning		\$53.7										
Measurement Standards & Commercial Vehicle Compliance		\$46.6										
Statewide Design and Engineering Services		\$62.7										
Northern Region Design, Engineering, and Construction		\$203.6										
Central Design and Engineering Services		\$145.4										
Southcoast Design and Engineering Services		\$59.1										
Central Region Construction and CIP Support		\$125.5										
Southcoast Region Construction		\$37.6										
State Equipment Fleet		\$96.8										
Central Region Highways and Aviation		\$115.4										
Northern Region Highways and Aviation		\$201.0										
Southcoast Region Highways and Aviation		\$55.1										
Whittier Access and Tunnel		\$0.8										
International Airport Systems Office		\$7.1										
Anchorage Airport Administration		\$24.3										
Anchorage Airport Facilities		\$84.9										
Anchorage Airport Field and Equipment Maintenance		\$65.3										
Anchorage Airport Operations		\$19.7										
Anchorage Airport Safety		\$64.2										
Fairbanks Airport Administration		\$11.1										
Fairbanks Airport Facilities		\$13.3										
Fairbanks Airport Field and Equipment Maintenance		\$16.3										
Fairbanks Airport Operations		\$6.4										
Fairbanks Airport Safety		\$26.2										
Marine Vessel Operations		\$294.8										
Marine Vessel Fuel		-\$0.1										
Marine Engineering		\$13.2										
Overhaul		-\$0.4										
Reservations and Marketing		\$10.3										
Marine Shore Operations		\$48.7										
Vessel Operations Management		\$26.9										
<b>FY2023 Exempt 5% COLA</b>												
SalAdj		8.9	8.9	0.0	0.0	0.0	0.0	0.0	0.0	0	0	0
1004 Gen Fund		0.9										
1005 GF/Prgm		6.4										
1061 CIP Rcpts		1.6										
FY2023 Exempt 5% COLA:		\$8.9										

**Change Record Detail - Multiple Scenarios with Descriptions**  
**Department of Transportation/Public Facilities**

**Component:** Measurement Standards & Commercial Vehicle Compliance (2332)

**RDU:** Administration and Support (333)

Scenario/Change Record Title	Trans Type	Totals	Personal Services	Travel	Services	Commodities	Capital Outlay	Grants, Benefits	Miscellaneous	Positions		NP
										PFT	PPT	
<b>Subtotal</b>		<b>7,508.1</b>	<b>6,171.1</b>	<b>158.6</b>	<b>1,034.0</b>	<b>105.0</b>	<b>39.4</b>	<b>0.0</b>	<b>0.0</b>	<b>60</b>	<b>0</b>	<b>0</b>
***** Changes From FY2023 Management Plan To FY2024 Governor *****												
<b>Replace Unallocated Rates Adjustments Unrealizable Fund Source for FY2024</b>												
	FndChg	0.0	0.0	0.0	0.0	0.0	0.0	0.0	0.0	0	0	0
1002 Fed Rcpts		-8.2										
1061 CIP Rcpts		8.2										
Replace unrealizable fund source resulting from unallocated rate adjustments.												
<b>Fund Source Swap Unified Carrier Registration Receipts to General Fund Program Receipts</b>												
	FndChg	0.0	0.0	0.0	0.0	0.0	0.0	0.0	0.0	0	0	0
1005 GF/Prgm		10.0										
1215 UCR Rcpts		-10.0										
Fund source swap from unified carrier registration receipts to general fund program receipt authority to align actual expenditures to fund source.												
<b>FY2024 AlaskaCare Health Insurance Increase - Exempt and Partially Exempt</b>												
	SalAdj	1.3	1.3	0.0	0.0	0.0	0.0	0.0	0.0	0	0	0
1005 GF/Prgm		1.1										
1061 CIP Rcpts		0.2										
FY2024 AlaskaCare health insurance increase for exempt and partially exempt employees from \$1,685 to \$1,793 per member per month.: \$1.3												
<b>FY2024 PERS Rate Adjustment</b>												
	SalAdj	11.4	11.4	0.0	0.0	0.0	0.0	0.0	0.0	0	0	0
1004 Gen Fund		1.5										
1005 GF/Prgm		4.9										
1061 CIP Rcpts		3.8										
1215 UCR Rcpts		1.2										
FY2024 PERS rate adjustment to 25.10%: \$11.4												
<b>FY2024 Salary and Health Insurance Increases</b>												
	SalAdj	124.5	124.5	0.0	0.0	0.0	0.0	0.0	0.0	0	0	0
1004 Gen Fund		17.1										
1005 GF/Prgm		52.2										
1061 CIP Rcpts		41.3										
1215 UCR Rcpts		13.9										
FY2024 Salary and Health Insurance Increases: \$124.5FY2024 GGU cost of living increase 2.5%: \$99.3												



**Change Record Detail - Multiple Scenarios with Descriptions**  
**Department of Transportation/Public Facilities**

**Component:** Measurement Standards & Commercial Vehicle Compliance (2332)

**RDU:** Administration and Support (333)

Scenario/Change Record Title	Trans Type	Totals	Personal Services	Travel	Services	Commodities	Capital Outlay	Grants, Benefits	Miscellaneous	Positions		NP
										PFT	PPT	
FY2024 SU cost of living increase 1%: \$10.4												
FY2024 AlaskaCare insurance from \$1,685 to \$1,793 per member per month.: \$11.3												
FY2024 GGU health insurance increase from \$1,567.50 to \$1,573.50 per member per month.: \$3.5												
<b>Restore Service Delivery for Inspections</b>												
	Inc	80.0	0.0	80.0	0.0	0.0	0.0	0.0	0.0	0	0	0
1005 GF/Prgm		80.0										
Restore service delivery to weighing and measuring devices—such as meters and scales—for business owners that require division inspectors to travel to test and inspect these devices scales. Increased authority is needed for third-party reimbursed trips off the road system, i.e., construction projects. Additionally, costs for travel, including lodging, airfare, and fuel have increased.												
Without an increase in authority, the component will have continued inability to meet the statutory requirements for annual verification requirement of all commercial weighing and measuring devices. Additionally, total third-party reimbursed trip costs would put the division over the current budget.												
<b>Totals</b>		<b>7,725.3</b>	<b>6,308.3</b>	<b>238.6</b>	<b>1,034.0</b>	<b>105.0</b>	<b>39.4</b>	<b>0.0</b>	<b>0.0</b>	<b>60</b>	<b>0</b>	<b>0</b>

**Line Item Detail (1676)**  
**Department of Transportation/Public Facilities**  
**Travel**

**Component:** Measurement Standards & Commercial Vehicle Compliance (2332)

Line Number	Line Name		FY2022 Actuals	FY2023 Management Plan	FY2024 Governor
2000	Travel		159.3	158.6	238.6
Object Class	Servicing Agency	Explanation	FY2022 Actuals	FY2023 Management Plan	FY2024 Governor
<b>2000 Travel Detail Totals</b>			<b>159.3</b>	<b>158.6</b>	<b>238.6</b>
2000	In-State Employee Travel	Airfare, Lodging, and Meals for employees while in travel status perform weights and measures inspections, commercial vehicle enforcement activities, training, or management meetings.	143.2	153.6	233.6
2002	Out of State Employee Travel	Out of state employee travel.	15.9	4.9	4.9
2006	Other Travel Costs	Cash advance fee.	0.2	0.1	0.1

**Line Item Detail (1676)**  
**Department of Transportation/Public Facilities**  
**Services**

**Component:** Measurement Standards & Commercial Vehicle Compliance (2332)

Line Number	Line Name		FY2022 Actuals	FY2023 Management Plan	FY2024 Governor
3000	Services		748.3	1,034.0	1,034.0
Object Class	Servicing Agency	Explanation	FY2022 Actuals	FY2023 Management Plan	FY2024 Governor
<b>3000 Services Detail Totals</b>			<b>748.3</b>	<b>1,034.0</b>	<b>1,034.0</b>
3000	Education Services	Training or conference fees for employees to attend national conferences, conventions, or meetings.	12.1	3.0	23.0
3001	Financial Services	Credit card processing fees.	31.5	78.6	65.0
3003	Information Technology	Information technology contractual cost such as software, licensing, maintenance, training, consulting and equipment lease. Includes Microsoft Enterprises Agreement, LAN desk software, and applied microsystem support.	20.0	60.0	35.0
3004	Telecommunications	Data/network charges for communications services to weigh stations and remote offices for centralized use of databases and networks. Cellular phone costs used while conducting program specific functions while employees are in the field and/or traveling. Long distance phone charges made during daily operations. The division has satellite offices within three major areas of the State of Alaska, as well as an 800 line for permit applications.	35.0	40.0	37.0
3005	Health Services	Health services for ergonomic issues as they arise.	1.0	0.5	1.0

**Line Item Detail (1676)**  
**Department of Transportation/Public Facilities**  
**Services**

**Component:** Measurement Standards & Commercial Vehicle Compliance (2332)

Object Class	Servicing Agency	Explanation	FY2022 Actuals	FY2023 Management Plan	FY2024 Governor
<b>3000 Services Detail Totals</b>			<b>748.3</b>	<b>1,034.0</b>	<b>1,034.0</b>
3006	Delivery Services	Freight for shipping equipment. Courier services, post office box rentals and postage.	7.7	30.5	18.7
3007	Advertising and Promotions	Advertising costs for public hearings concerning proposed regulation changes.	2.1	6.0	6.0
3008	Utilities	Electricity, water and sewer, and disposal.	0.4	3.0	3.0
3009	Structure/Infrastructure/Land	Repairs or maintenance on facilities not covered under a lease or Reimbursable Services Agreement. Combined account codes for Janitorial and other repairs/maintenance. Annual inspection and recharge of fire extinguishers.	87.6	75.6	68.6
3010	Equipment/Machinery	Repairs for equipment or small machinery used in the course of conducting program specific activities. Includes maintenance of weigh station scales. Combines equipment/machinery repairs/maintenance and rentals/leases.	28.3	45.0	40.0
3011	Other Services	Safety services combined other non-IA services such as fees for printing annual billings, armored car service, laundry.	8.8	6.0	21.9
3017	Inter-Agency Information Technology Non-Telecommunications	Computer services provided by Department of Administration such as central server, data storage, printing, network services, open connect, and task order system.	156.5	0.0	0.0
3017	Inter-Agency Information Technology Admin - Department-wide	Computer services provided by the	0.0	162.1	121.6

**Line Item Detail (1676)**  
**Department of Transportation/Public Facilities**  
**Services**

**Component:** Measurement Standards & Commercial Vehicle Compliance (2332)

Object Class	Servicing Agency	Explanation	FY2022 Actuals	FY2023 Management Plan	FY2024 Governor
<b>3000 Services Detail Totals</b>			<b>748.3</b>	<b>1,034.0</b>	<b>1,034.0</b>
Non-Telecommunications		Department of Administration such as central server, data storage, printing, network services, open connect, and task order system.			
3018	Inter-Agency Information Technology Telecommunications	Telecommunications services provided by the Department of Administration such as basic telephone services, equipment and features, dedicated voice/data line service, statewide paging, two-way radio, and video conferencing.	1.1	0.0	0.0
3018	Inter-Agency Information Technology Telecommunications	Admin - Department-wide Telecommunications services provided by the Department of Administration such as basic telephone services, equipment and features, dedicated voice/data line service, statewide paging, two-way radio, and video conferencing.	12.3	14.0	18.6
3018	Inter-Agency Information Technology Telecommunications	M&VA - Department-wide Telecommunications services such as basic telephone services, equipment and features, dedicated voice/data line service, statewide paging, two-way radio, and video conferencing.	0.0	1.0	0.0
3021	Inter-Agency Mail	Admin - Department-wide Chargeback fees for central mail services such as mailing vendor payments and payroll warrants.	0.3	1.0	1.0
3022	Inter-Agency Human Resources	Admin - Department-wide Chargeback fees for human resource services such as labor relations, position classification and payroll processing.	34.8	39.5	39.5
3022	Inter-Agency Human Resources	Gov - Department-wide Office of Management and Budget - Budget Analyst support.	0.0	0.5	0.0
3024	Inter-Agency Legal	E&ED - Department-wide Legal services provided by the	0.0	0.1	0.0

**Line Item Detail (1676)**  
**Department of Transportation/Public Facilities**  
**Services**

**Component:** Measurement Standards & Commercial Vehicle Compliance (2332)

Object Class	Servicing Agency	Explanation	FY2022 Actuals	FY2023 Management Plan	FY2024 Governor
<b>3000 Services Detail Totals</b>			<b>748.3</b>	<b>1,034.0</b>	<b>1,034.0</b>
		Department of Law.			
3024	Inter-Agency Legal	Law - Department-wide Legal services provided by the Department of Law. Legal fees for citation disputes and for regulation/statute changes.	1.1	30.0	30.0
3026	Inter-Agency Insurance	Admin - Department-wide Reimbursable services agreement with Department of Administration for self- insurance programs.	1.8	4.0	0.3
3027	Inter-Agency Financial	Admin - Department-wide Chargeback fees for AKPAY/IRIS/ALDER.	20.6	32.0	35.0
3028	Inter-Agency Americans with Disabilities Act Compliance	Admin - Department-wide Chargeback fees for the statewide coordinator for the Americans with Disabilities Act (ADA).	0.5	0.6	0.3
3029	Inter-Agency Education/Training	E&ED - Department-wide Inter-agency education/training services.	0.0	0.5	0.5
3036	Inter-Agency Safety	Trans - AIA Administration (613) Costs associated with finger printing/identification cards.	0.0	0.5	0.5
3037	State Equipment Fleet	Trans - State Equipment Fleet (2791) State equipment fleet services.	284.8	350.0	370.0
3038	Inter-Agency Management/Consulting	Admin - Department-wide Shared Services of Alaska accounts payable and travel and expense activities.	0.0	50.0	97.5

**Line Item Detail (1676)**  
**Department of Transportation/Public Facilities**  
**Commodities**

**Component:** Measurement Standards & Commercial Vehicle Compliance (2332)

Line Number	Line Name		FY2022 Actuals	FY2023 Management Plan	FY2024 Governor
4000	Commodities		93.9	105.0	105.0
Object Class	Servicing Agency	Explanation	FY2022 Actuals	FY2023 Management Plan	FY2024 Governor
<b>4000 Commodities Detail Totals</b>			<b>93.9</b>	<b>105.0</b>	<b>105.0</b>
4000	Business	Office supplies used to conduct official business; equipment/Furniture/Tools/Vehicles; and Books and educational supplies.	84.3	86.0	60.5
4000	Business	Computer replacement program to replace 16% of the systems hardware each year.	0.0	0.0	17.0
4002	Household/Institutional	Clothing, uniforms, and cleaning supplies.	6.4	8.3	7.0
4003	Scientific and Medical	Instruments and laboratory supplies.	0.0	0.0	2.8
4004	Safety	Fire suppression and other safety equipment necessary to conduct official business. Combines Fire Suppression and Other Safety account codes.	3.2	9.1	10.7
4006	Signs and Markers	Signs and Markers for roadside safety such as hazard marker and warning signs.	0.0	0.5	0.0
4015	Parts and Supplies	Parts and supplies.	0.0	1.0	4.0
4019	Small Tools/Minor Equipment	Small Tools/Minor Equipment.	0.0	0.0	3.0
4020	Equipment Fuel	Fuel for Equipment	0.0	0.1	0.0

**Line Item Detail (1676)**  
**Department of Transportation/Public Facilities**  
**Capital Outlay**

**Component:** Measurement Standards & Commercial Vehicle Compliance (2332)

Line Number	Line Name		FY2022 Actuals	FY2023 Management Plan	FY2024 Governor
5000	Capital Outlay		36.1	39.4	39.4
Object Class	Servicing Agency	Explanation	FY2022 Actuals	FY2023 Management Plan	FY2024 Governor
<b>5000 Capital Outlay Detail Totals</b>			<b>36.1</b>	<b>39.4</b>	<b>39.4</b>
5002	Structures and Infrastructure	Structures and infrastructure.	0.0	15.0	15.0
5004	Equipment	Equipment needed in the course of conducting program activities.	36.1	24.4	24.4



**Revenue Detail (1681)**  
**Department of Transportation/Public Facilities**

**Component:** Measurement Standards & Commercial Vehicle Compliance (2332)

Revenue Type (OMB Fund Code) Revenue Source	Component	Comment	FY2022 Actuals	FY2023 Management Plan	FY2024 Governor
<b>5002 Fed Rcpts (1002 Fed Rcpts)</b>			<b>0.0</b>	<b>8.2</b>	<b>0.0</b>
5003 Federal - Indirect Recovery		Unrealizable federal authority. Unrealizable federal authority.	0.0	8.2	0.0
<b>5005 GF/Prgm (1005 GF/Prgm)</b>			<b>2,717.9</b>	<b>3,191.0</b>	<b>3,339.2</b>
5104 Program Receipts Charges for Services - 3rd Party Collectns		These receipts are derived from the collections for third party trips/fees.	16.5	21.4	21.4
5111 Program Receipts Transportation - Charges for Services		These receipts are derived from the collections for the following fees and permits:  Oversize/overweight permit fees; commercial vehicle temporary trip permit fees; measuring device registration fees; metrology laboratory fees; and third party trips/fees.  AS 45.75 Weights & Measures Act AS 19.10.060 Size, Weight & Load Provisions; Restriction of Use of Highways; Commercial Vehicle Inspection Program AS 19.10.300 Financial Responsibility (Commercial Motor Vehicle) AS 19.10.310 Commercial Motor Vehicle Inspections 17 AAC 25 Truck Size, Weight and Safety Regulations for Weighing and Measuring Devices	2,701.4	3,169.6	3,317.8
<b>5007 I/A Rcpts (1007 I/A Rcpts)</b>			<b>12.4</b>	<b>15.0</b>	<b>15.0</b>
5301 Inter-Agency Receipts		Reimbursement from any state agency's operating budget for services provided. Typical requests	12.4	0.0	0.0

**Revenue Detail (1681)**  
**Department of Transportation/Public Facilities**

**Component:** Measurement Standards & Commercial Vehicle Compliance (2332)

Revenue Type (OMB Fund Code) Revenue Source	Component	Comment	FY2022 Actuals	FY2023 Management Plan	FY2024 Governor
5301 Inter-Agency Receipts	PubSaf - Department-wide	are for professional construction management. Specific agreements and departments served vary from year to year. Reimbursable services agreement with the Department of Public Safety for the certification of radar scanners for the Alaska State Troopers.	0.0	15.0	15.0
<b>5061 CIP Rcpts (1061 CIP Rcpts)</b>			<b>2,175.4</b>	<b>2,311.3</b>	<b>2,364.8</b>
5351 Capital Improvement Project Inter-Agency		Capital improvement project receipts for work in direct support of capital projects.	2,175.4	1,932.1	1,932.2
5351 Capital Improvement Project Inter-Agency		Recovery of indirect costs from the capital budget via the department's Indirect Cost Allocation Plan (ICAP).	0.0	379.2	432.6
<b>5215 UCR Rcpts (1215 UCR Rcpts)</b>			<b>1,553.9</b>	<b>733.2</b>	<b>738.3</b>
5412 Uniform Commercial Registration Fees		These receipts are derived from the collection of the following fees:  Unified Carrier Registration (UCR) fees  Department of Transportation; Federal Motor Carrier Safety Administration; 49 CFR Part 367; Unified Carrier Act of 2005	1,553.9	733.2	738.3

**Inter-Agency Services (1682)**  
**Department of Transportation/Public Facilities**

**Component:** Measurement Standards & Commercial Vehicle Compliance (2332)

	FY2022 Actuals	FY2023 Management Plan	FY2024 Governor
<b>Component Totals</b>	<b>356.2</b>	<b>685.8</b>	<b>714.8</b>
With Department of Administration	70.3	303.2	313.8
With Department of Military and Veterans' Affairs	0.0	1.0	0.0
With Office of the Governor	0.0	0.5	0.0
With Department of Education and Early Development	0.0	0.6	0.5
With Department of Law	1.1	30.0	30.0
With Department of Transportation/Public Facilities	284.8	350.5	370.5

Object Class	Servicing Agency	Explanation	FY2022 Actuals	FY2023 Management Plan	FY2024 Governor
3017	Inter-Agency Information Technology Non-Telecommunications	Admin - Department-wide  Computer services provided by the Department of Administration such as central server, data storage, printing, network services, open connect, and task order system.	0.0	162.1	121.6
3018	Inter-Agency Information Technology Telecommunications	Admin - Department-wide  Telecommunications services provided by the Department of Administration such as basic telephone services, equipment and features, dedicated voice/data line service, statewide paging, two-way radio, and video conferencing.	12.3	14.0	18.6
3018	Inter-Agency Information Technology Telecommunications	M&VA - Department-wide  Telecommunications services such as basic telephone services, equipment and features, dedicated voice/data line service, statewide paging, two-way radio, and video conferencing.	0.0	1.0	0.0
3021	Inter-Agency Mail	Admin - Department-wide  Chargeback fees for central mail services such as mailing vendor payments and payroll warrants.	0.3	1.0	1.0
3022	Inter-Agency Human Resources	Admin - Department-wide  Chargeback fees for human resource services such as labor	34.8	39.5	39.5

**Inter-Agency Services (1682)**  
**Department of Transportation/Public Facilities**

**Component:** Measurement Standards & Commercial Vehicle Compliance (2332)

Object Class		Servicing Agency	Explanation	FY2022 Actuals	FY2023 Management Plan	FY2024 Governor
			relations, position classification and payroll processing.			
3022	Inter-Agency Human Resources	Gov - Department-wide	Office of Management and Budget - Budget Analyst support.	0.0	0.5	0.0
3024	Inter-Agency Legal	E&ED - Department-wide	Legal services provided by the Department of Law.	0.0	0.1	0.0
3024	Inter-Agency Legal	Law - Department-wide	Legal services provided by the Department of Law. Legal fees for citation disputes and for regulation/statute changes.	1.1	30.0	30.0
3026	Inter-Agency Insurance	Admin - Department-wide	Reimbursable services agreement with Department of Administration for self- insurance programs.	1.8	4.0	0.3
3027	Inter-Agency Financial	Admin - Department-wide	Chargeback fees for AKPAY/IRIS/ALDER.	20.6	32.0	35.0
3028	Inter-Agency Americans with Disabilities Act Compliance	Admin - Department-wide	Chargeback fees for the statewide coordinator for the Americans with Disabilities Act (ADA).	0.5	0.6	0.3
3029	Inter-Agency Education/Training	E&ED - Department-wide	Inter-agency education/training services.	0.0	0.5	0.5
3036	Inter-Agency Safety	Trans - AIA Administration (613)	Costs associated with finger printing/identification cards.	0.0	0.5	0.5
3037	State Equipment Fleet	Trans - State Equipment Fleet (2791)	State equipment fleet services.	284.8	350.0	370.0
3038	Inter-Agency Management/Consulting	Admin - Department-wide	Shared Services of Alaska accounts payable and travel and expense activities.	0.0	50.0	97.5

**Personal Services Expenditure Detail**  
**Department of Transportation/Public Facilities**

**Scenario:** FY2024 Governor (19867)  
**Component:** Measurement Standards & Commercial Vehicle Compliance (2332)  
**RDU:** Administration and Support (333)

PCN	Job Class Title	Time Status	Retire Code	Barg Unit	Location	Salary Sched	Range / Step	Comp Months	Split / Count	Annual Salaries	COLA	Premium Pay	Annual Benefits	Total Costs	UGF Amount
08-5001	Wm Inspect Trn	FT	A	GP	Sterling	200	12B / C	12.0		43,241	1,976	12,685	42,130	100,032	0
08-5005	Wm Inspect Trn	FT	A	GP	Anchorage	200	12B / C	12.0		43,241	2,092	15,957	43,483	104,773	0
08-5006	Wm Inspect Trn	FT	A	GP	Anchorage	200	12B / C	12.0		43,241	2,115	16,611	43,753	105,720	0
08-5031	Accountant 3	FT	A	GP	Anchorage	200	18K	12.0		81,686	2,887	0	52,784	137,357	44,752
08-5032	Wm Inspect Trn	FT	A	GP	Anchorage	200	12C / D	12.0		44,200	2,132	16,121	43,947	106,400	0
08-5038	Weights & Measures Inspector 2	FT	A	GP	Fairbanks	203	16G	12.0		68,445	3,033	17,368	54,491	143,337	0
08-5039	Weights & Measures Inspector 2	FT	A	GP	Juneau	205	16A / B	12.0		58,656	2,543	13,306	48,762	123,267	0
08-5043	Wm Inspect Trn	FT	A	GP	Anchorage	200	12B / C	12.0		43,028	2,085	15,957	43,395	104,465	0
08-5044	State Metrologist 2	FT	A	GP	Anchorage	200	18M / N	12.0		89,090	3,148	0	55,846	148,084	0
08-5048	Chf Wm/Prmts	FT	A	SS	Anchorage	200	22B / C	12.0		91,487	1,293	0	59,512	152,292	0
08-5054	Comm Veh Ci 4	FT	A	SS	Anchorage	200	17E / F	12.0		73,033	1,032	0	51,879	125,944	35,158
08-5055	Division Director - Px	FT	A	XE	Anchorage	N00	27J / K	12.0		136,568	0	0	78,013	214,581	105,706
08-5056	Chf Wm/Prmts	FT	A	SS	Fairbanks	203	22F	12.0		105,747	1,495	0	65,410	172,652	26,064
08-5058	Administrative Assistant 2	FT	A	GP	Anchorage	200	14F / G	12.0		56,525	2,074	2,148	43,266	104,013	6,907
08-5059	Comm Veh Ci 1	FT	A	GP	Anchorage	200	13G	12.0		53,859	1,947	1,242	41,788	98,836	32,240
08-5060	Secretary	FT	A	GP	Anchorage	200	11E / F	12.0		44,009	1,555	0	37,201	82,765	12,415
08-5061	Project Assistant	FT	A	GP	Anchorage	200	16J	12.0		69,206	2,446	0	47,622	119,274	32,511
08-5062	Administrative Officer 2	FT	A	SS	Anchorage	200	19D / E	12.0		79,832	1,129	0	54,691	135,652	102,025
08-5064	Comm Veh Ci 1	FT	A	GP	Anchorage	200	13C / D	12.0		48,190	1,741	1,082	39,378	90,391	18,510
08-5066	Comm Veh Ci 1	FT	A	GP	Anchorage	200	13B / C	12.0		46,844	1,715	1,698	39,076	89,333	11,779
08-5067	Comm Veh Ci 3	FT	A	GP	Anchorage	200	16C / D	12.0		59,300	2,096	0	43,525	104,921	13,640
08-5068	Comm Veh Ci 2	FT	A	GP	Anchorage	200	15B / C	12.0		53,519	2,029	3,900	42,747	102,195	13,285
08-5069	Comm Veh Ci 2	FT	A	GP	Tok	200	15Q / R	12.0		80,879	3,072	6,057	54,955	144,963	18,845
08-5070	Accounting Technician 1	FT	A	GP	Anchorage	200	12F / G	12.0		48,906	1,728	0	39,226	89,860	1,122
08-5071	Comm Veh Ci 1	FT	A	GP	Anchorage	200	13B / C	12.0		46,498	1,643	0	38,230	86,371	11,228
08-5072	Comm Veh Ci 2	FT	A	GP	Fairbanks	203	15D / E	12.0		57,622	2,036	0	42,831	102,489	13,324
08-5075	Comm Veh Ci 2	FT	A	GP	Fairbanks	203	15B / C	12.0		53,726	1,899	0	41,220	96,845	12,590
08-5076	Comm Veh Ci 2	FT	A	GP	Fairbanks	203	15G	12.0		63,902	2,258	0	45,429	111,589	14,507
08-5077	Comm Veh Ci 1	FT	A	GP	Fairbanks	203	13B / C	12.0		48,151	1,794	2,624	39,999	92,568	12,034
08-5080	Comm Veh Ci 1	FT	A	GP	Anchorage	200	13B / C	12.0		46,538	1,682	1,045	38,679	87,944	72,358
08-5082	Comm Veh Ci 3	FT	A	GP	Tok	200	16F / G	12.0		65,354	2,395	2,409	47,025	117,183	15,234
08-5083	Comm Veh Ci 3	FT	A	GP	Fairbanks	203	16G / J	12.0		69,741	2,555	2,566	48,905	123,767	16,090
08-5084	Comm Veh Ci 2	FT	A	GP	Anchorage	200	15C / D	12.0		54,847	1,938	0	41,683	98,468	12,801
08-5086	Comm Veh Ci 1	FT	A	GP	Anchorage	200	13B / C	12.0		46,165	1,631	0	38,092	85,888	11,165
08-5087	Comm Veh Ci 2	FT	A	GP	Anchorage	200	15B / C	12.0		52,624	1,860	0	40,764	95,248	12,382
08-5091	Comm Veh Ci 2	FT	A	GP	Fairbanks	203	15E / F	12.0		60,799	2,208	1,670	44,836	109,513	14,237
08-5092	Comm Veh Ci 1	FT	A	GP	Anchorage	200	13D / E	12.0		49,862	1,802	1,119	40,084	92,867	78,937

Note: If a position is split, an asterisk (\*) will appear in the Split/Count column. If the split position is also counted in the component, two asterisks (\*\*) will appear in this column. [No valid job title] appearing in the Job Class Title indicates that the PCN has an invalid class code or invalid range for the class code effective date of this scenario.

**Personal Services Expenditure Detail**  
**Department of Transportation/Public Facilities**

**Scenario:** FY2024 Governor (19867)  
**Component:** Measurement Standards & Commercial Vehicle Compliance (2332)  
**RDU:** Administration and Support (333)

PCN	Job Class Title	Time Status	Retire Code	Barg Unit	Location	Salary Sched	Range / Step	Comp Months	Split / Count	Annual Salaries	COLA	Premium Pay	Annual Benefits	Total Costs	UGF Amount
08-5095	Wm Inspect Trn	FT	A	GP	Anchorage	200	12A / B	12.0		42,530	2,032	14,975	42,783	102,320	0
08-5096	Weights & Measures Inspector 2	FT	A	GP	Anchorage	200	16B / C	12.0		56,780	2,549	15,347	48,830	123,506	0
08-5097	Comm Veh Ci 2	FT	A	GP	Fairbanks	203	15A / B	12.0		53,567	1,893	0	41,154	96,614	7,627
12-1758	Comm Veh Ci 4	FT	A	SS	Fairbanks	203	17M	12.0		86,133	1,218	0	57,297	144,648	13,627
12-1760	Comm Veh Ci 2	FT	A	GP	Sterling	200	15A / B	12.0		51,663	1,826	0	40,366	93,855	12,201
12-1761	Comm Veh Ci 2	FT	A	GP	Anchorage	200	15A / B	12.0		51,663	1,826	0	40,366	93,855	12,201
25-0050	Comm Veh Ci 4	FT	A	GP	Anchorage	200	17D / E	12.0		64,859	2,292	0	45,824	112,975	10,394
25-3366	Comm Veh Ci 5	FT	A	SS	Anchorage	200	19F	12.0		84,157	1,190	0	56,480	141,827	18,438
25-3369	Comm Veh Ci 2	FT	A	GP	Anchorage	200	15B / C	12.0		52,886	1,869	0	40,872	95,627	12,432
25-3370	Comm Veh Ci 3	FT	A	GP	Fairbanks	203	16D / E	12.0		62,318	2,202	0	44,773	109,293	14,208
25-3371	Grants Administrator 3	FT	A	GP	Anchorage	200	19C / D	12.0		73,542	2,599	0	49,416	125,557	24,765
25-3372	Comm Veh Ci 2	FT	A	GP	Anchorage	200	15A / B	12.0		51,663	1,826	0	40,366	93,855	12,201
25-3373	Comm Veh Ci 4	FT	A	SS	Tok	200	17K / L	12.0		78,523	1,110	0	54,150	133,783	53,884
25-3374	Comm Veh Ci 3	FT	A	GP	Anchorage	200	16M	12.0		76,167	2,793	2,856	51,683	133,499	17,355
25-3375	Comm Veh Ci 2	FT	A	GP	Tok	200	15E / F	12.0		58,208	2,210	4,324	44,862	109,604	14,249
25-3380	State Metrologist 1	FT	A	GP	Anchorage	200	16C / D	12.0		59,445	2,101	0	43,585	105,131	0
25-3383	Program Coordinator 2	FT	A	SS	Anchorage	200	20F / J	12.0		91,742	1,297	0	59,617	152,656	0
25-3413	Comm Veh Ci 2	FT	A	GP	Anchorage	200	15A / B	12.0		51,663	1,826	0	40,366	93,855	12,201
25-3483	Research Analyst 2	FT	A	GP	Anchorage	200	16D / E	12.0		59,937	2,118	0	43,789	105,844	0
25-3597	Comm Veh Ci 2	FT	A	GP	Tok	200	15G	12.0		62,049	2,357	4,653	46,587	115,646	15,034
25-3740	Ms Stand Spvr	FT	A	SS	Anchorage	200	18B / C	12.0		71,074	1,005	0	51,069	123,148	0
25-3793	Weights & Measures Inspector 1	FT	A	GP	Anchorage	200	14B / C	12.0		49,589	2,341	16,645	46,393	114,968	0
25-3805	Grants Administrator 2	FT	A	GP	Anchorage	200	17G / J	12.0		73,335	2,592	0	49,330	125,257	0
													<b>Total Salary Costs:</b>	3,742,054	
													<b>Total COLA:</b>	118,136	
													<b>Total Premium Pay:</b>	194,365	
													<b>Total Benefits:</b>	2,794,615	
													<b>Total Pre-Vacancy:</b>	6,849,170	
													<b>Minus Vacancy Adjustment of 7.90%:</b>	(540,870)	
													<b>Total Post-Vacancy:</b>	6,308,300	
													<b>Plus Lump Sum Premium Pay:</b>	0	
													<b>Personal Services Line 100:</b>	6,308,300	
		<b>Total Positions</b>	<b>New</b>	<b>Deleted</b>											
<b>Full Time Positions:</b>		60	0	0											
<b>Part Time Positions:</b>		0	0	0											
<b>Non Permanent Positions:</b>		0	0	0											
<b>Positions in Component:</b>		60	0	0											
<b>Total Component Months:</b>		720.0													

Note: If a position is split, an asterisk (\*) will appear in the Split/Count column. If the split position is also counted in the component, two asterisks (\*\*) will appear in this column. [No valid job title] appearing in the Job Class Title indicates that the PCN has an invalid class code or invalid range for the class code effective date of this scenario.

**Personal Services Expenditure Detail**  
**Department of Transportation/Public Facilities**

**Scenario:** FY2024 Governor (19867)  
**Component:** Measurement Standards & Commercial Vehicle Compliance (2332)  
**RDU:** Administration and Support (333)

<b>PCN Funding Sources:</b>	<b>Pre-Vacancy</b>	<b>Post-Vacancy</b>	<b>Percent</b>
1004 General Fund Receipts	1,022,659	941,901	14.93%
1005 General Fund/Program Receipts	2,889,780	2,661,578	42.19%
1039 U/A Indirect Cost Recovery	122,924	113,217	1.79%
1061 Capital Improvement Project Receipts	2,089,707	1,924,686	30.51%
1215 Uniform Commercial Registration fees	724,099	666,918	10.57%
<b>Total PCN Funding:</b>	<b>6,849,170</b>	<b>6,308,300</b>	<b>100.00%</b>

Note: If a position is split, an asterisk (\*) will appear in the Split/Count column. If the split position is also counted in the component, two asterisks (\*\*) will appear in this column.  
 [No valid job title] appearing in the Job Class Title indicates that the PCN has an invalid class code or invalid range for the class code effective date of this scenario.

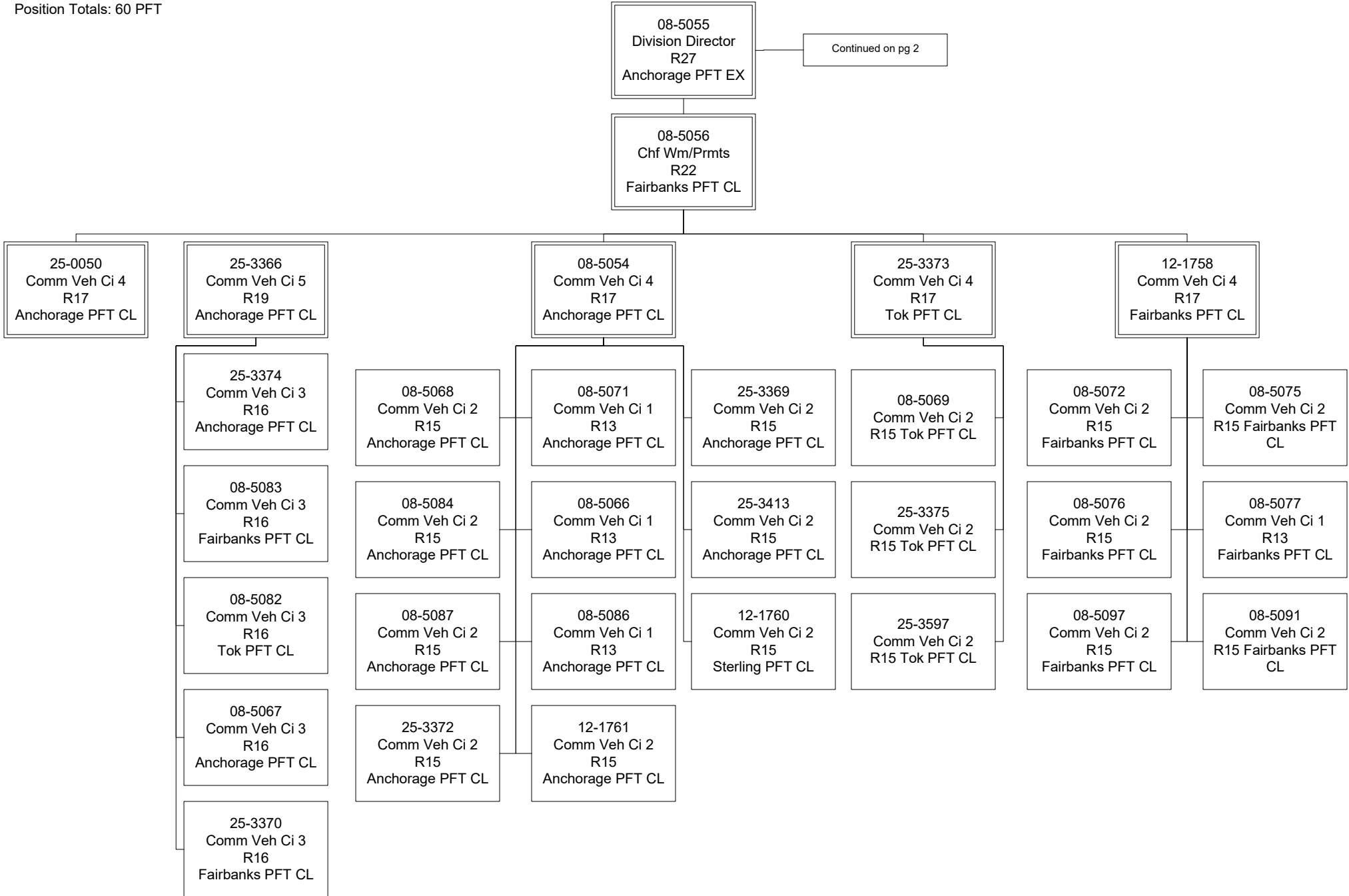
**Department of Transportation & Public Facilities**

Measurement Standards & Commercial Vehicle Compliance (2332)

RDU: Administration and Support (333)

FY2024 Governor's Budget

Position Totals: 60 PFT





**Department of Transportation & Public Facilities**

Measurement Standards & Commercial Vehicle Compliance (2332)

RDU: Administration and Support (333)

FY2024 Governor's Budget

Position Totals: 60 PFT

