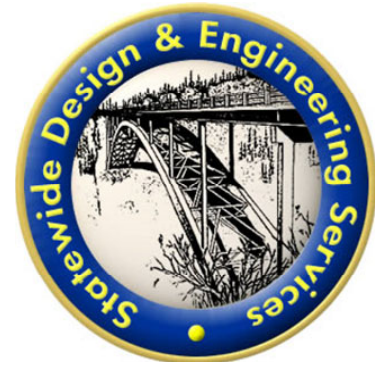
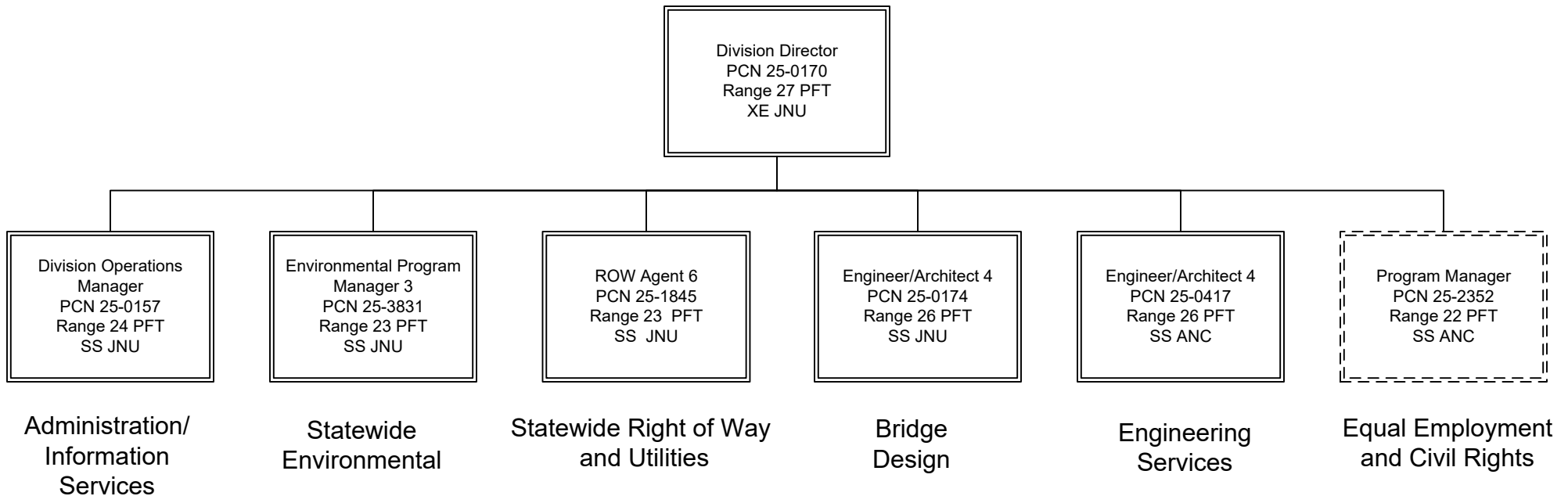


Department of Transportation & Public Facilities  
RDU: Design, Engineering and Construction  
Component: Statewide Design and Engineering Services (2357)  
FY2024 Governor's Budget  
PFT – 75, PT – 0, NP – 6



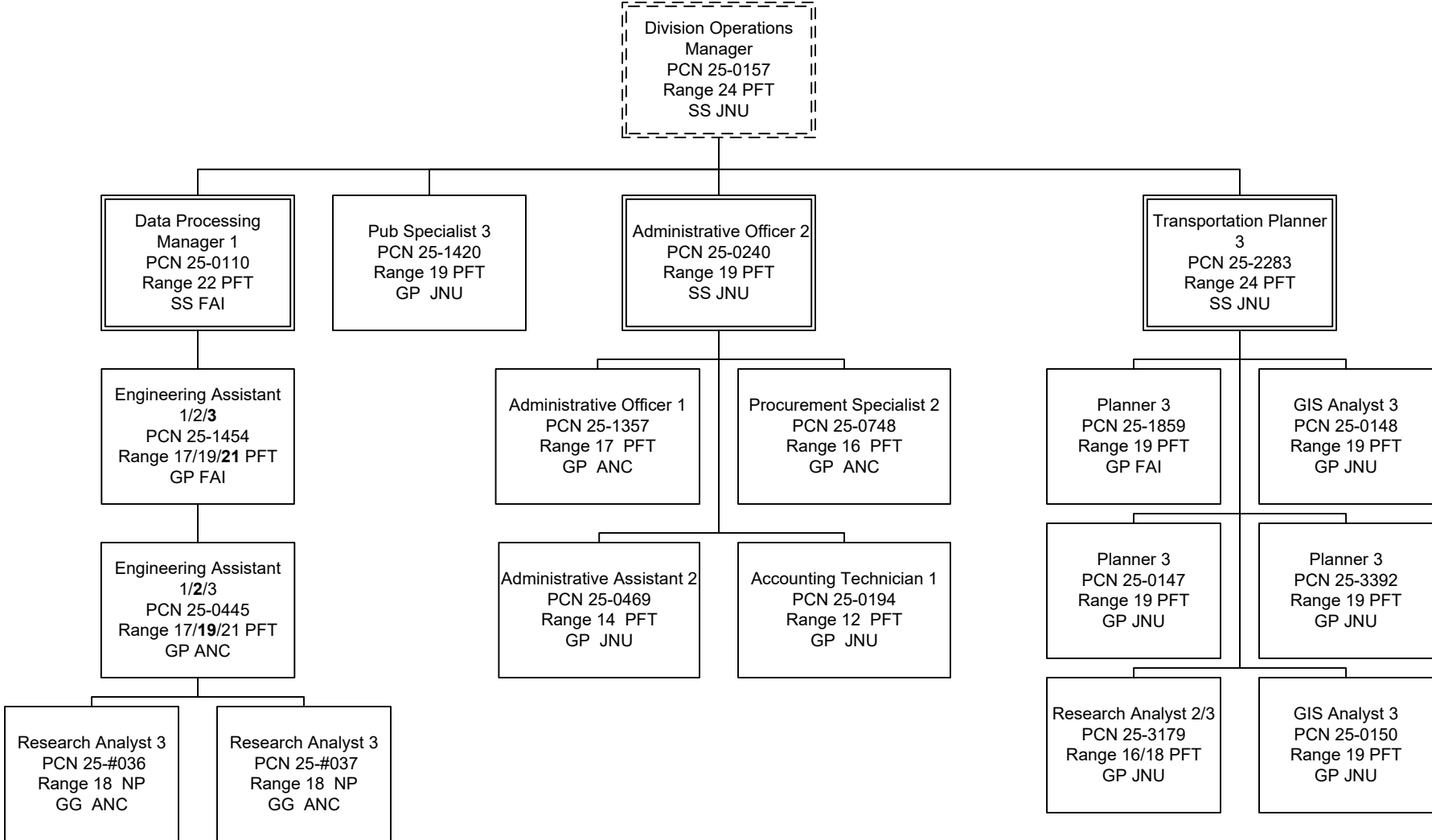
## CHIEF ENGINEER'S OFFICE



\*PCN 25-2352 is budgeted in the Equal Employment and Civil Rights component.

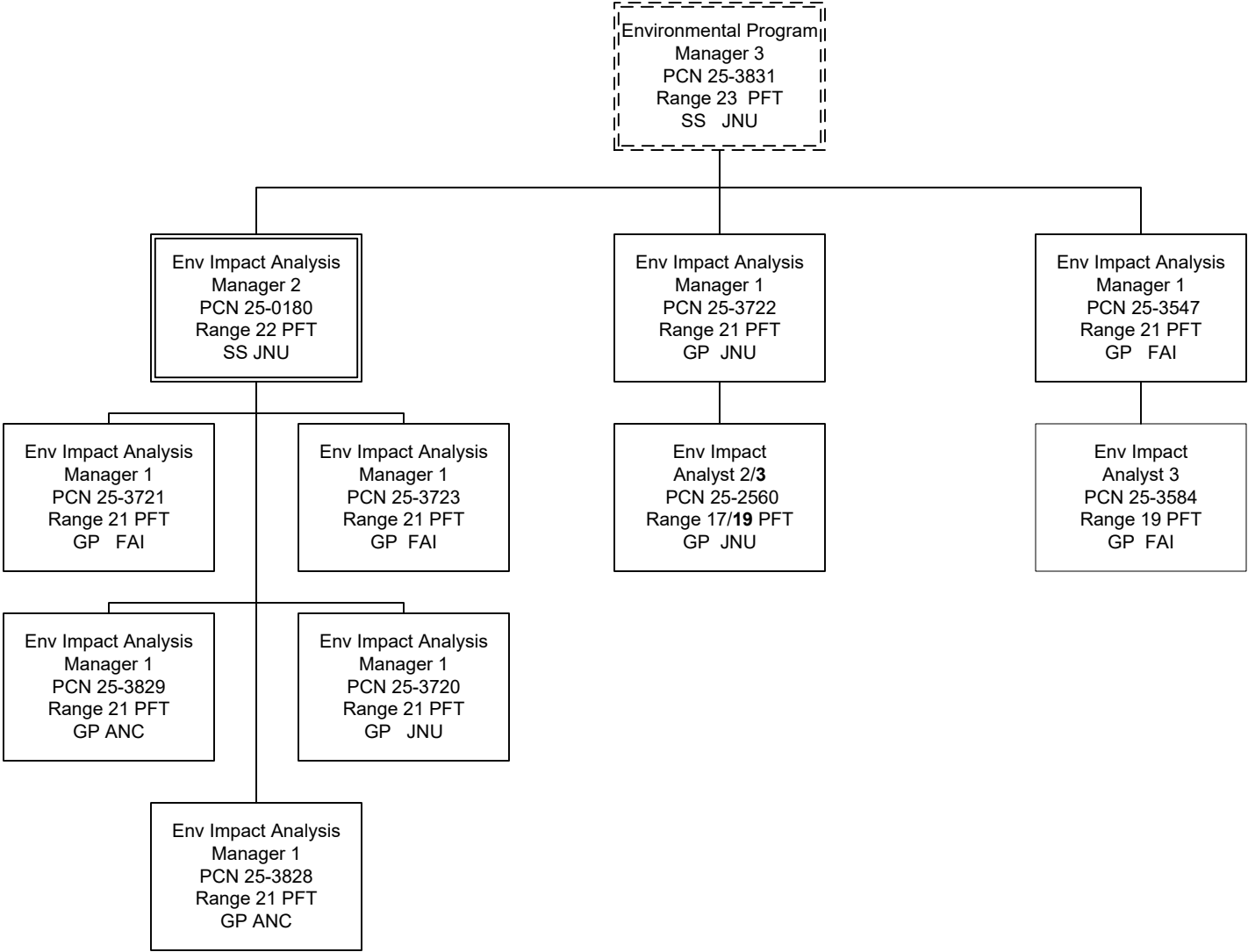


# ADMINISTRATION/ INFORMATION SERVICES





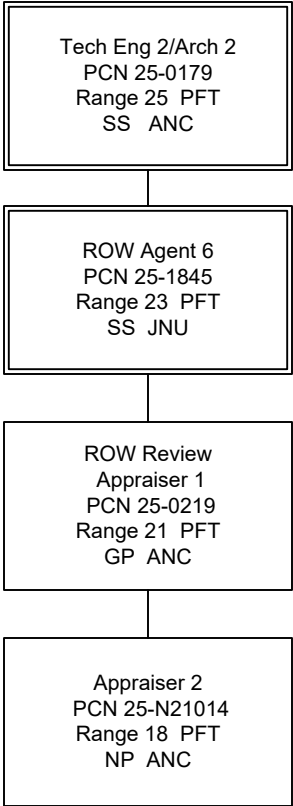
# STATEWIDE ENVIRONMENTAL



Department of Transportation & Public Facilities  
RDU: Design, Engineering and Construction  
Component: Statewide Design and Engineering Services (2357)  
FY2024 Governor's Budget  
PFT – 75, PT – 0, NP – 6



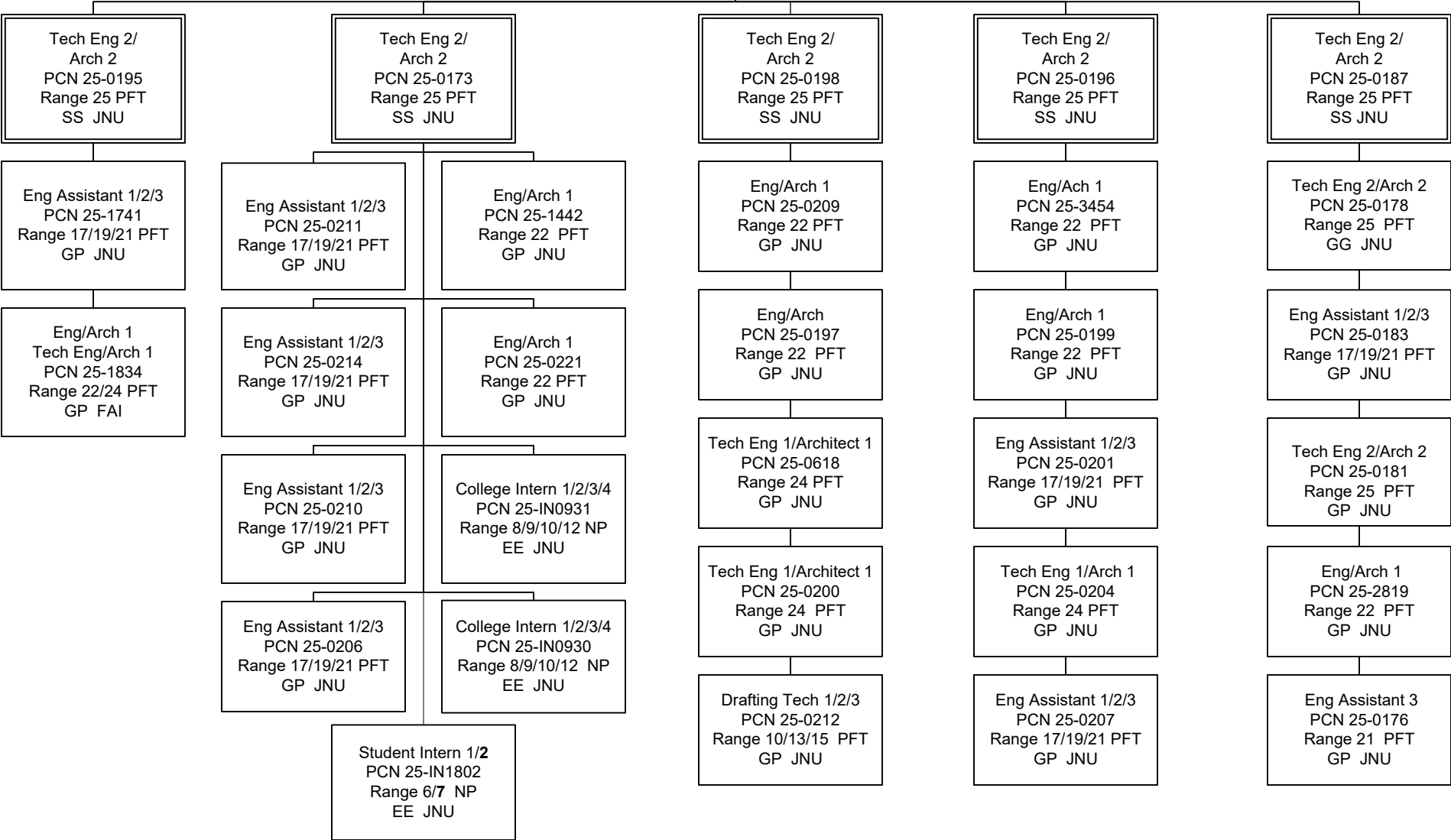
# Statewide Right of Way and Utilities





# BRIDGE DESIGN

Engineer/Architect 4  
 PCN 25-0174  
 Range 26 PFT  
 SS JNU





# ENGINEERING SERVICES

