

# **State of Alaska FY2024 Governor's Operating Budget**

## **Department of Transportation/Public Facilities Northern Region Design, Engineering, and Construction Component Budget Summary**

Component: Northern Region Design, Engineering, and Construction

## Contribution to Department's Mission

Preserve and improve the transportation system in Alaska and protect the health and safety of Alaska's traveling public by administering the construction of safe, environmentally sound, reliable, and cost-effective highways, airports, and buildings. Develop, design, and administer projects that improve Alaska's transportation and public facilities infrastructure. The division also provides a wide range of technical services to the department, other state & federal agencies, local governments, and the public.

## Core Services

- Develop capital improvement projects (CIP) from the planning stage to final plans, specifications, and estimates for construction advertising.
- Ensure environmental compliance services during design development and construction and maintenance and operations of facilities.
- Develop a program of community and corridor plans in accordance with project delivery timelines and available funding within various programs.
- Review projects for design standards, cost practicality, and constructability.
- Complete and maintain airport master plans, airport layout plans, and airport certification documents.
- Complete traffic studies, review crash data, and respond to public requests on safety related concerns.
- Conduct hydrological studies, geotechnical investigations and surveying for capital projects and other agencies upon request.
- Manage highway rights of way including encroachment management, vacations and issuing right of way and utility permits per regulations and statutes.
- Acquire real property in support of CIP projects.
- Conduct public involvement throughout project's design and construction process.
- Develop CIP project bid packages through formal advertisement and contract award.
- Coordinate with the Civil Rights Office in the administration of the Disadvantaged Business Enterprises program.
- Solicit and administer professional services agreements for design and construction related professional services.
- Administer construction contracts including field inspection, issue progress payments, materials testing, contract compliance, and contract change administration as necessary.
- Provide support for emergency/disaster response when damages to transportation infrastructure require contractor repairs.
- Close projects per funding agency requirements.

## Major Component Accomplishments in 2022

- Delivered a comprehensive program of bid-ready designs and contract documents for highway and airport projects, which are 90% federally funded.
- **Major Highway projects delivered:**
  - **Statewide:** Richardson Highway Mile Post 40-51 Resurfacing, Richardson Highway Mile Post 329-341 Resurfacing, Alaska Highway Mile Post 1280-1300 Passing Lanes, Alaska Highway Mile Post 1235-1251 Rehabilitation, Alaska Highway Mile Post 1222-1227 Resurfacing, Little Tonsina Burma Pit Bridge Replacement, Northern Region Guardrail Upgrades, and drainage improvements at Richardson Highway Mile Post 298, Taylor Highway Mile Post 54 and McCarthy Road Mile Post 41.
  - **Fairbanks:** University Avenue Rehabilitation and Widening (Geraghty Avenue and 19<sup>th</sup> Avenue to Parks Highway), Airport Way/Steese Expressway Intersection Reconstruction, Fairbanks Area Surface Transportation (FAST) Surface Upgrades, Cushman Street Bridge Rehabilitation, Steese Expressway Chena Bridge Redeck, Airport Way West Improvements, North Pole Street Light Standardization, Fairbanks Motor Vehicle Plug-Ins, and Targeted Airshed Grant Dynamic Message Signs.
  - **Rural:** Selawik Barge Landing and Boardwalk Improvements
- **New Airport projects delivered:** Point Hope Airport Realignment, St. Mary's Airport Improvements, Kotzebue Runway Settlement Repair, and Shishmaref Airport Erosion Control, and electrical building enclosures at airports in Tok and Eagle.

- **Pedestrian Improvement projects delivered:** Northern Region Americans with Disabilities Act (ADA) Improvements (Fairbanks Chena Pump Road and Sixth Avenue) and Airport Way West Pedestrian Facilities.
- **Community enhancement projects delivered:** Copper River Boat Launch (Chitina) and Parks Highway Milepost 231 Enhancements (McKinley Village).
- Provided construction administration for 53 active construction projects (32 awarded, 21 continued from previous season) across 16 communities in the Northern Region, overseeing \$220,000.0 in contractor payments. \$81,000.0 of these payments were made for improvements in remote Alaska communities including Kotzebue, Kaltag, Nome, Bettles, Norvik, and Utqiagvik.
- Administered \$51,310.0 in construction project work in the Fairbanks area including continued work on the University Avenue Chena Hot Springs Road, and the Gaffney/Airport/Richardson/Steese Intersection projects.
- Quickly replaced girders on the Mitchell Expressway/Cushman Street Overcrossing that were damaged by a bridge strike using Construction Manager/General Contractor (CMGC). Designed and constructed a near-emergency revetment along the Richardson Highway prior to breakup. Also repaired approximately 26 miles of flood damage on the Richardson Highway and two roads in Nome damaged by storm.
- Closed out 18 construction projects.
- Conducted formal Department-Contractor partnering on multiple projects in the region.
- Completed the repaving of 87 lane miles of roadways and 62 lane miles of airports. Completed reconstructing 25 lane miles of roadway.

### **Key Component Challenges**

- Communicating and coordinating with contractors, project stakeholders, and the public regarding construction season traffic impacts.
- Developing financially feasible capital projects in communities off the road system and in areas with limited gravel material availability.
- Maintaining compliance with the United States Environmental Protection Agency and Department of Environmental Conservation stormwater monitoring responsibilities and requirements.
- Compliance with Federal Highway Administration Work Zone Management requirements across rural and urban settings, including expanding federal oversight regarding pedestrian traffic control and American with Disabilities Act compliance.

### **Significant Changes in Results to be Delivered in FY2024**

- Improved traffic operations communication and coordination with State Troopers on full implementation of Traffic Operations Center, which allows traffic signals throughout the Fairbanks area to be monitored and issues troubleshot from DOT&PF offices.

### **Statutory and Regulatory Authority**

AS 02 Aeronautics  
AS 08 Business and Professions  
AS 19 Highways and Ferries  
AS 29.60, Municipal Government State Programs  
AS 30.30, Navigation, Harbors, Shipping, and Transportation Facilities, Abandoned and Derelict Vessels  
AS 34 Property  
AS 35 Public Buildings, Works  
AS 36 Public Contracts  
AS 44 State Government  
17 AAC 15 Transportation and Public Facilities  
USC CFR 14 Aeronautics  
USC CFR 15 Environment  
USC CFR 16 Environment  
USC CFR 23 Highways  
USC CFR 33 Environment  
USC CFR 41 Contracts  
USC CFR 42 Environment/ADA  
USC CFR 43 Lands

USC CFR 49 Transportation

**Contact Information**

**Contact:** Joseph Kemp, P.E., Acting Regional Director

**Phone:** (907) 451-2210

**E-mail:** joseph.kemp@alaska.gov

Northern Region Design, Engineering, and Construction Personal Services Information				
Authorized Positions			Personal Services Costs	
	<u>FY2023</u> <u>Management</u> <u>Plan</u>	<u>FY2024</u> <u>Governor</u>		
Full-time	198	198	Annual Salaries	22,160,619
Part-time	71	71	COLA	786,983
Nonpermanent	7	7	Premium Pay	2,339,473
			Annual Benefits	14,817,178
			<i>Less 4.95% Vacancy Factor</i>	<i>(1,984,953)</i>
			Lump Sum Premium Pay	0
<b>Totals</b>	<b>276</b>	<b>276</b>	<b>Total Personal Services</b>	<b>38,119,300</b>

Position Classification Summary					
Job Class Title	Anchorage	Fairbanks	Juneau	Others	Total
Accountant 3	0	1	0	0	1
Accountant 4	0	1	0	0	1
Accounting Technician 1	0	2	0	0	2
Accounting Technician 2	0	1	0	0	1
Accounting Technician 3	0	1	0	0	1
Administrative Assistant 1	0	3	0	0	3
Administrative Assistant 2	0	3	0	0	3
Administrative Officer 1	0	2	0	0	2
Chief Engineering Geologist	0	1	0	0	1
College Intern 1	0	1	0	0	1
College Intern 4	0	1	0	0	1
Drafting Technician 3	0	2	0	0	2
Driller, Journey	1	3	0	0	4
Driller, Sub-Journey	1	2	0	0	3
E/T Subjrny 1	0	5	0	0	5
E/T Subjrny 2	0	20	0	5	25
E/T Subjrny 3	0	13	0	4	17
Eng Tech Jrny	0	15	0	4	19
Engineer/Architect 1	0	10	0	0	10
Engineer/Architect 2	0	2	0	1	3
Engineer/Architect 3	0	18	0	0	18
Engineer/Architect 4	0	6	0	0	6
Engineer/Architect 5	0	2	0	0	2
Engineering Assistant 1	0	7	1	0	8
Engineering Assistant 2	0	26	0	3	29
Engineering Assistant 3	0	38	0	5	43
Engineering Associate	0	10	1	4	15
Engineering Geologist 2	0	4	0	0	4
Env Imp A Mgr 1	0	1	0	0	1
Environmental Impact Analyst 2	0	2	0	0	2
Environmental Impact Analyst 3	0	8	0	0	8
Land Survey Manager 1	0	2	0	0	2
Land Surveyor 1	0	2	0	0	2
Land Surveyor 2	0	1	0	0	1
Maint Gen Jrny	0	1	0	0	1
Office Assistant 2	0	3	0	0	3

<b>Position Classification Summary</b>					
<b>Job Class Title</b>	<b>Anchorage</b>	<b>Fairbanks</b>	<b>Juneau</b>	<b>Others</b>	<b>Total</b>
Procurement Specialist 2	0	1	0	0	1
Procurement Specialist 3	0	1	0	0	1
Right-Of-Way Agent 2	0	3	0	0	3
Right-Of-Way Agent 3	0	8	0	0	8
Right-Of-Way Agent 4	0	2	0	0	2
Right-Of-Way Assistant	0	1	0	0	1
Survey Lead	0	3	0	0	3
Survey, Journey	0	1	0	0	1
Survey, Sub-Journey 2	0	2	0	0	2
Tech Eng/Arch 1	0	4	0	0	4
<b>Totals</b>	<b>2</b>	<b>246</b>	<b>2</b>	<b>26</b>	<b>276</b>

**Component Detail All Funds**  
**Department of Transportation/Public Facilities**

**Component:** Northern Region Design, Engineering, and Construction (3375)  
**RDU:** Design, Engineering and Construction (526)

Non-Formula Component

	FY2022 Actuals	FY2023 Conference Committee	FY2023 Authorized	FY2023 Management Plan	FY2024 Governor	FY2023 Management Plan vs FY2024 Governor	
71000 Personal Services	0.0	37,338.7	37,342.7	37,342.7	38,119.3	776.6	2.1%
72000 Travel	0.0	45.4	45.4	45.4	45.4	0.0	0.0%
73000 Services	0.0	1,262.1	1,465.7	1,465.7	1,465.7	0.0	0.0%
74000 Commodities	0.0	237.4	237.4	237.4	237.4	0.0	0.0%
75000 Capital Outlay	0.0	0.0	0.0	0.0	0.0	0.0	0.0%
77000 Grants, Benefits	0.0	0.0	0.0	0.0	0.0	0.0	0.0%
78000 Miscellaneous	0.0	0.0	0.0	0.0	0.0	0.0	0.0%
<b>Totals</b>	<b>0.0</b>	<b>38,883.6</b>	<b>39,091.2</b>	<b>39,091.2</b>	<b>39,867.8</b>	<b>776.6</b>	<b>2.0%</b>
<b>Fund Sources:</b>							
1002 Fed Rcpts (Fed)	0.0	0.0	19.4	19.4	0.0	-19.4	-100.0%
1004 Gen Fund (UGF)	0.0	247.1	250.3	250.3	252.6	2.3	0.9%
1005 GF/Prgm (DGF)	0.0	344.1	344.1	344.1	351.5	7.4	2.2%
1007 I/A Rcpts (Other)	0.0	174.2	174.2	174.2	177.9	3.7	2.1%
1061 CIP Rcpts (Other)	0.0	38,087.1	38,272.1	38,272.1	39,054.1	782.0	2.0%
1232 ISPF-I/A (Other)	0.0	31.1	31.1	31.1	31.7	0.6	1.9%
<b>Unrestricted General (UGF)</b>	<b>0.0</b>	<b>247.1</b>	<b>250.3</b>	<b>250.3</b>	<b>252.6</b>	<b>2.3</b>	<b>0.9%</b>
<b>Designated General (DGF)</b>	<b>0.0</b>	<b>344.1</b>	<b>344.1</b>	<b>344.1</b>	<b>351.5</b>	<b>7.4</b>	<b>2.2%</b>
<b>Other Funds</b>	<b>0.0</b>	<b>38,292.4</b>	<b>38,477.4</b>	<b>38,477.4</b>	<b>39,263.7</b>	<b>786.3</b>	<b>2.0%</b>
<b>Federal Funds</b>	<b>0.0</b>	<b>0.0</b>	<b>19.4</b>	<b>19.4</b>	<b>0.0</b>	<b>-19.4</b>	<b>-100.0%</b>
<b>Positions:</b>							
Permanent Full Time	0	199	199	198	198	0	0.0%
Permanent Part Time	0	71	71	71	71	0	0.0%
Non Permanent	0	7	7	7	7	0	0.0%

**Change Record Detail - Multiple Scenarios with Descriptions**  
**Department of Transportation/Public Facilities**

**Component:** Northern Region Design, Engineering, and Construction (3375)

**RDU:** Design, Engineering and Construction (526)

Scenario/Change Record Title	Trans Type	Totals	Personal Services	Travel	Services	Commodities	Capital Outlay	Grants, Benefits	Miscellaneous	Positions		NP
										PFT	PPT	
***** Changes From FY2023 Conference Committee To FY2023 Authorized *****												
<b>FY2023 Conference Committee</b>												
ConfCom		38,883.6	37,338.7	45.4	1,262.1	237.4	0.0	0.0	0.0	199	71	7
1004 Gen Fund		247.1										
1005 GF/Prgm		344.1										
1007 I/A Rcpts		174.2										
1061 CIP Rcpts		38,087.1										
1232 ISPF-I/A		31.1										
<b>Align Authority for Unallocated Rates Adjustments</b>												
Unalloc		203.6	0.0	0.0	203.6	0.0	0.0	0.0	0.0	0	0	0
1002 Fed Rcpts		19.4										
1061 CIP Rcpts		184.2										

Reallocate unallocated rate adjustments across department's components.

Unallocated Rate Adjustments:

- FY2023 Administrative Systems Rate Adjusted Base Change \$101.4
- FY2023 Administrative Systems Upgrade Ongoing Cost Increases \$594.1
- FY2023 Human Resources Rate Adjusted Base Change \$619.2
- FY2023 Human Resources Rate AspireAlaska \$112.0
- FY2023 Office of Information Technology Core Services Rate Adjusted Base Change \$80.8
- FY2023 Office of Information Technology Core Services Rate Infrastructure Upkeep Increase \$229.9
- FY2023 Office of Information Technology Core Services Rate Software Increases \$509.9
- FY2023 Office of Information Technology Mainframe Increases -\$4.3
- FY2023 Office of Information Technology Other Non-Core Adjusted Base \$2.4
- FY2023 Travel and Accounts Payable Rate Adjusted Base Change -\$34.7

Department Components:

- Facilities Services \$99.9
- Leases \$4.0
- Commissioner's Office \$10.3
- Contracting and Appeals \$1.7
- Equal Employment and Civil Rights \$7.8
- Internal Review \$3.0
- Statewide Administrative Services \$47.6
- Information Systems and Services \$22.4
- Statewide Procurement \$18.3
- Central Region Support Services \$7.1
- Northern Region Support Services \$4.7
- Southcoast Region Support Services \$22.1
- Statewide Aviation \$26.3



**Change Record Detail - Multiple Scenarios with Descriptions**  
**Department of Transportation/Public Facilities**

**Component:** Northern Region Design, Engineering, and Construction (3375)

**RDU:** Design, Engineering and Construction (526)

Scenario/Change Record Title	Trans Type	Totals	Personal Services	Travel	Services	Commodities	Capital Outlay	Grants, Benefits	Miscellaneous	Positions		NP
										PFT	PPT	
Program Development and Statewide Planning		\$53.7										
Measurement Standards & Commercial Vehicle Compliance		\$46.6										
Statewide Design and Engineering Services		\$62.7										
Northern Region Design, Engineering, and Construction		\$203.6										
Central Design and Engineering Services		\$145.4										
Southcoast Design and Engineering Services		\$59.1										
Central Region Construction and CIP Support		\$125.5										
Southcoast Region Construction		\$37.6										
State Equipment Fleet		\$96.8										
Central Region Highways and Aviation		\$115.4										
Northern Region Highways and Aviation		\$201.0										
Southcoast Region Highways and Aviation		\$55.1										
Whittier Access and Tunnel		\$0.8										
International Airport Systems Office		\$7.1										
Anchorage Airport Administration		\$24.3										
Anchorage Airport Facilities		\$84.9										
Anchorage Airport Field and Equipment Maintenance		\$65.3										
Anchorage Airport Operations		\$19.7										
Anchorage Airport Safety		\$64.2										
Fairbanks Airport Administration		\$11.1										
Fairbanks Airport Facilities		\$13.3										
Fairbanks Airport Field and Equipment Maintenance		\$16.3										
Fairbanks Airport Operations		\$6.4										
Fairbanks Airport Safety		\$26.2										
Marine Vessel Operations		\$294.8										
Marine Vessel Fuel		-\$0.1										
Marine Engineering		\$13.2										
Overhaul		-\$0.4										
Reservations and Marketing		\$10.3										
Marine Shore Operations		\$48.7										
Vessel Operations Management		\$26.9										
<b>FY2023 Exempt 5% COLA</b>												
SalAdj		4.0	4.0	0.0	0.0	0.0	0.0	0.0	0.0	0	0	0
1004 Gen Fund		3.2										
1061 CIP Rcpts		0.8										
FY2023 Exempt 5% COLA:		\$4.0										
<b>Subtotal</b>		<b>39,091.2</b>	<b>37,342.7</b>	<b>45.4</b>	<b>1,465.7</b>	<b>237.4</b>	<b>0.0</b>	<b>0.0</b>	<b>0.0</b>	<b>199</b>	<b>71</b>	<b>7</b>

\*\*\*\*\* Changes From FY2023 Authorized To FY2023 Management Plan \*\*\*\*\*

**Change Record Detail - Multiple Scenarios with Descriptions**  
**Department of Transportation/Public Facilities**

**Component:** Northern Region Design, Engineering, and Construction (3375)

**RDU:** Design, Engineering and Construction (526)

Scenario/Change Record Title	Trans Type	Totals	Personal Services	Travel	Services	Commodities	Capital Outlay	Grants, Benefits	Miscellaneous	Positions		
										PFT	PPT	NP
<b>Transfer Information Officer 3 (25-1820) from Northern Region Design, Engineering and Construction for Program Alignment</b>												
	Trout	0.0	0.0	0.0	0.0	0.0	0.0	0.0	0.0	-1	0	0
Transfer full-time Information Officer 3 (25-1820), range 20, located in Fairbanks, to Commissioner's Office for program alignment.												
<b>Subtotal</b>		<b>39,091.2</b>	<b>37,342.7</b>	<b>45.4</b>	<b>1,465.7</b>	<b>237.4</b>	<b>0.0</b>	<b>0.0</b>	<b>0.0</b>	<b>198</b>	<b>71</b>	<b>7</b>
***** <b>Changes From FY2023 Management Plan To FY2024 Governor</b> *****												
<b>Transfer Funding to Northern Region Support Services to Fund Information Officer 3 (25-2231) Position</b>												
	Trout	-130.0	-130.0	0.0	0.0	0.0	0.0	0.0	0.0	0	0	0
1061 CIP Rcpts		-130.0										
A full-time, Information Officer 3 (25-1820) was transferred from Northern Design, Engineering, and Construction to the Commissioner's Office, which left the region without an Information Officer.												
Due to the breadth of regional outreach of the Information Officer, it is more accurately organized in the Support Services component. Thus, a vacant position from the Division of Facilities Services component was transferred to Northern Region Support Services and reclassified to a full-time Information Officer 3 (25-2231), range 20, located in Fairbanks, to fulfill the duties that were left when PCN 25-1820 was transferred. Since the funding that was used for the Information Officer 3 did not transfer with the position, Northern Region Design, Engineering, and Construction will transfer the authority to Northern Support Services to align the budget with the organizational structure.												
<b>Replace Unallocated Rates Adjustments Unrealizable Fund Source for FY2024</b>												
	FndChg	0.0	0.0	0.0	0.0	0.0	0.0	0.0	0.0	0	0	0
1002 Fed Rcpts		-19.4										
1061 CIP Rcpts		19.4										
Replace unrealizable fund source resulting from unallocated rate adjustments.												
<b>FY2024 AlaskaCare Health Insurance Increase - Exempt and Partially Exempt</b>												
	SalAdj	0.6	0.6	0.0	0.0	0.0	0.0	0.0	0.0	0	0	0
1004 Gen Fund		0.5										
1061 CIP Rcpts		0.1										
FY2024 AlaskaCare health insurance increase for exempt and partially exempt employees from \$1,685 to \$1,793 per member per month.: \$0.6												
<b>FY2024 PERS Rate Adjustment</b>												
	SalAdj	73.2	73.2	0.0	0.0	0.0	0.0	0.0	0.0	0	0	0
1004 Gen Fund		0.3										
1005 GF/Prgm		0.7										
1007 I/A Rcpts		0.3										
1061 CIP Rcpts		71.8										
1232 ISPF-I/A		0.1										

**Change Record Detail - Multiple Scenarios with Descriptions**  
**Department of Transportation/Public Facilities**

**Component:** Northern Region Design, Engineering, and Construction (3375)

**RDU:** Design, Engineering and Construction (526)

Scenario/Change Record Title	Trans Type	Totals	Personal Services	Travel	Services	Commodities	Capital Outlay	Grants, Benefits	Miscellaneous	Positions		
										PFT	PPT	NP
FY2024 PERS rate adjustment to 25.10%: \$73.2												
<b>FY2024 Salary and Health Insurance Increases</b>												
	SalAdj	832.8	832.8	0.0	0.0	0.0	0.0	0.0	0.0	0	0	0
1004 Gen Fund		1.5										
1005 GF/Prgm		6.7										
1007 I/A Rcpts		3.4										
1061 CIP Rcpts		820.7										
1232 ISPF-I/A		0.5										
FY2024 Salary and Health Insurance Increases: \$832.8FY2024 GGU cost of living increase 2.5%: \$524.4												
FY2024 LTC cost of living increase 3.25%: \$164.2												
FY2024 SU cost of living increase 1%: \$70.8												
FY2024 AlaskaCare insurance from \$1,685 to \$1,793 per member per month.: \$47.9												
FY2024 GGU health insurance increase from \$1,567.50 to \$1,573.50 per member per month.: \$10.9												
FY2024 LTC health insurance increase from \$1,580 to \$1,605 per member per month.: \$14.6												
<b>Totals</b>		<b>39,867.8</b>	<b>38,119.3</b>	<b>45.4</b>	<b>1,465.7</b>	<b>237.4</b>	<b>0.0</b>	<b>0.0</b>	<b>0.0</b>	<b>198</b>	<b>71</b>	<b>7</b>

**Line Item Detail (1676)**  
**Department of Transportation/Public Facilities**  
**Travel**

**Component:** Northern Region Design, Engineering, and Construction (3375)

Line Number	Line Name		FY2022 Actuals	FY2023 Management Plan	FY2024 Governor
2000	Travel		0.0	45.4	45.4
Object Class	Servicing Agency	Explanation	FY2022 Actuals	FY2023 Management Plan	FY2024 Governor
<b>2000 Travel Detail Totals</b>			<b>0.0</b>	<b>45.4</b>	<b>45.4</b>
2000	In-State Employee Travel	Travel and per diem for field travel including project review, survey, project analysis, administrative and procedural review of projects within the state, and attending training and conferences. In state administrative travel for the regional director, section and group chiefs, and administrative staff.	0.0	41.4	41.4
2002	Out of State Employee Travel	Out of state travel and per diem for regional director or other employees. Travel is usually for administrative, conventions, meeting, and training not available in-state.	0.0	4.0	4.0

**Line Item Detail (1676)**  
**Department of Transportation/Public Facilities**  
**Services**

**Component:** Northern Region Design, Engineering, and Construction (3375)

Line Number	Line Name		FY2022 Actuals	FY2023 Management Plan	FY2024 Governor
3000	Services		0.0	1,465.7	1,465.7
Object Class	Servicing Agency	Explanation	FY2022 Actuals	FY2023 Management Plan	FY2024 Governor
<b>3000 Services Detail Totals</b>			<b>0.0</b>	<b>1,465.7</b>	<b>1,465.7</b>
3000	Education Services	Training and conference fees for staff, excluding IT-related. Includes Western Alliance for Quality in Transportation Construction (WAQTC) training, Nuclear Regulatory Commission (NRC) training, American Association of State and Highway Transportation Officials (AASHTO) training, and Highway Users Federation conferences.	0.0	20.0	20.0
3003	Information Technology	All information technology (IT) contractual costs such as software licensing, software maintenance, IT training, IT consulting, and IT equipment leases.	0.0	167.2	167.2
3004	Telecommunications	Long distance, local phone service, data communications, cellular service provided by vendors.	0.0	33.0	33.0
3006	Delivery Services	Courier contract.	0.0	18.2	18.2
3007	Advertising and Promotions	Advertising and legal and public notices for non-project specific and public relations activities.	0.0	14.5	14.5
3008	Utilities	Utilities include waste disposal, propane and heating oil for field labs \$2.0 and McKinley building \$33.9.	0.0	52.0	52.0
3010	Equipment/Machinery	Maintenance agreements for copiers, and office equipment repairs	0.0	33.1	33.1

**Line Item Detail (1676)**  
**Department of Transportation/Public Facilities**  
**Services**

**Component:** Northern Region Design, Engineering, and Construction (3375)

Object Class	Servicing Agency	Explanation	FY2022 Actuals	FY2023 Management Plan	FY2024 Governor
<b>3000 Services Detail Totals</b>			<b>0.0</b>	<b>1,465.7</b>	<b>1,465.7</b>
		as needed.			
3010	Equipment/Machinery	Rental or lease of postage meter (\$2.0), Xerox copier (\$1.0), and occasional rental of other equipment as needed.	0.0	74.4	74.4
3011	Other Services	Print/Copy/Graphics services.	0.0	38.0	38.0
3017	Inter-Agency Information Technology Non-Telecommunications	Admin - Department-wide Computer services provided by Department of Administration such as central server, data storage, printing, network services, open connect, and task order system.	0.0	507.2	507.2
3018	Inter-Agency Information Technology Telecommunications	Admin - Department-wide Telecommunications services provided by the Department of Administration such as basic telephone services, equipment and features, dedicated voice/data line service, statewide paging, two-way radio, and video conferencing.	0.0	112.5	112.5
3021	Inter-Agency Mail	Admin - Department-wide Chargeback fees for central mail services such as mailing vendor payments and payroll warrants.	0.0	4.2	4.2
3022	Inter-Agency Human Resources	Admin - Department-wide Interagency Human Resource chargeback.	0.0	212.5	212.5
3024	Inter-Agency Legal	Law - Department-wide Legal services provided by the Department of Law.	0.0	6.3	6.3
3026	Inter-Agency Insurance	Admin - Department-wide Risk Management Services for the McKinley Building (leased).	0.0	1.8	1.8
3027	Inter-Agency Financial	Admin - Department-wide Chargeback fees for HRM/IRIS/ALDER.	0.0	131.9	131.9
3028	Inter-Agency Americans with Disabilities Act Compliance	Admin - Department-wide Chargeback fees for the statewide coordinator for the Americans with Disabilities Act (ADA).	0.0	3.9	3.9
3037	State Equipment Fleet	Trans - State Equipment Fleet (2791) State Equipment and Fleet operating	0.0	35.0	35.0

**Line Item Detail (1676)**  
**Department of Transportation/Public Facilities**  
**Services**

**Component:** Northern Region Design, Engineering, and Construction (3375)

Object Class	Servicing Agency	Explanation	FY2022 Actuals	FY2023 Management Plan	FY2024 Governor
<b>3000 Services Detail Totals</b>			<b>0.0</b>	<b>1,465.7</b>	<b>1,465.7</b>
<p>and replacement fees for approximately 76 vehicles, to include credit card fuel, and vehicle maintenance and repairs. Budgeted amounts, if any, are for operating budget vehicles only; prior year actuals amount includes the cost of capital improvement project vehicles, which are funded through an unbudgeted reimbursable services agreement.</p>					

**Line Item Detail (1676)**  
**Department of Transportation/Public Facilities**  
**Commodities**

**Component:** Northern Region Design, Engineering, and Construction (3375)

Line Number	Line Name		FY2022 Actuals	FY2023 Management Plan	FY2024 Governor
4000	Commodities		0.0	237.4	237.4
Object Class	Servicing Agency	Explanation	FY2022 Actuals	FY2023 Management Plan	FY2024 Governor
<b>4000 Commodities Detail Totals</b>			<b>0.0</b>	<b>237.4</b>	<b>237.4</b>
4000	Business	Office and instructional supplies. Includes consumable supplies such as paper, pens, copy machine supplies, photographic supplies, computer and word processing supplies, and subscriptions. Also includes non-consumable supplies such as furniture and office equipment.	0.0	69.7	69.7
4000	Business	Computers, monitors, printers.	0.0	105.7	105.7
4000	Business	Equipment/Furniture/Tools/Vehicles	0.0	15.0	15.0
4002	Household/Institutional	Minor cleaning supplies for office equipment and conference rooms.	0.0	2.0	2.0
4003	Scientific and Medical	Laboratory supplies for construction engineering and quality control.	0.0	25.0	25.0
4004	Safety	Safety, first aid, personal safety protection, and fire suppression.	0.0	10.0	10.0
4019	Small Tools/Minor Equipment	Signs/markers, minor tools/equipment, maintenance and repair supplies. Includes paint, lumber and other structural supplies for minor business or field office repair and maintenance. Also includes lube and parts for minor equipment repairs.	0.0	10.0	10.0
4020	Equipment Fuel	Equipment Fuel	0.0	0.0	0.0



**Line Item Detail (1676)**

**Department of Transportation/Public Facilities  
Commodities**

**Component:** Northern Region Design, Engineering, and Construction (3375)

**Revenue Detail (1681)**  
**Department of Transportation/Public Facilities**

**Component:** Northern Region Design, Engineering, and Construction (3375)

Revenue Type (OMB Fund Code) Revenue Source	Component	Comment	FY2022 Actuals	FY2023 Management Plan	FY2024 Governor
<b>5002 Fed Rcpts (1002 Fed Rcpts)</b>			<b>0.0</b>	<b>19.4</b>	<b>0.0</b>
5002 Federal General Government - Miscellaneous Grants		Unallocated rates adjustment, core services	0.0	19.4	0.0
<b>5005 GF/Prgm (1005 GF/Prgm)</b>			<b>0.0</b>	<b>344.1</b>	<b>351.5</b>
5101 Program Receipts Public Protection - Licenses and Permits		Receipts from issuing utility permits in the state's right-of-way and for inspections for utility installations.	0.0	121.0	126.6
5113 Program Receipts Natural Resources - Rent and Royalties		Fees collected for plans and specifications in connection with bids and contracts for construction and maintenance projects, per the Department of Transportation and Public Facilities policy and procedure 10.02.030. Receipts also include charges assessed to the owners of illegally placed signs within the State's right-of-way. These signs are removed and stored. When they are identified, they are returned to the owner after the owner has paid the established fee. Receipts are also collected from the Tourist Oriented Destination Signs (TODS) program, per AS 19.05.070-.100.	0.0	18.0	19.9
5120 Program Receipts - Other Revenue		Receipts from the sale and or lease of excess right-of-way.	0.0	205.1	205.0
<b>5007 I/A Rcpts (1007 I/A Rcpts)</b>			<b>0.0</b>	<b>174.2</b>	<b>177.9</b>
5301 Inter-Agency Receipts	Trans - Northern Design & Eng Svc (2299)	Reimbursement from any state agency's operating budget for services provided. Typical requests are for design studies, environmental consultation, drilling, drafting, and right-of-way surveys.	0.0	174.2	177.9

**Revenue Detail (1681)**  
**Department of Transportation/Public Facilities**

**Component:** Northern Region Design, Engineering, and Construction (3375)

Revenue Type (OMB Fund Code) Revenue Source	Component	Comment	FY2022 Actuals	FY2023 Management Plan	FY2024 Governor
		Specific agreements and departments served vary from year to year.			
<b>5061 CIP Rcpts (1061 CIP Rcpts)</b>			<b>0.0</b>	<b>38,272.1</b>	<b>39,054.1</b>
5351 Capital Improvement Project Inter-Agency		Capital improvement project receipts for work in direct support of capital projects.	0.0	31,173.3	31,945.7
5351 Capital Improvement Project Inter-Agency		Recovery of indirect costs from the capital budget via the department's Indirect Cost Allocation Plan (ICAP). Increase \$184.2 for unallocated rates adjustments.	0.0	7,098.8	7,108.4
<b>5232 ISPF-I/A (1232 ISPF-I/A)</b>			<b>0.0</b>	<b>31.1</b>	<b>31.7</b>
5426 In-State Pipeline Fund IA	Commerce - Department-wide	Provide pipeline regulatory and engineering expertise for In-State Natural Gas Pipeline.	0.0	31.1	31.7

**Inter-Agency Services (1682)**  
**Department of Transportation/Public Facilities**

**Component:** Northern Region Design, Engineering, and Construction (3375)

				FY2022 Actuals	FY2023 Management Plan	FY2024 Governor
<b>Component Totals</b>				<b>0.0</b>	<b>1,015.3</b>	<b>1,015.3</b>
With Department of Administration				0.0	974.0	974.0
With Department of Law				0.0	6.3	6.3
With Department of Transportation/Public Facilities				0.0	35.0	35.0
<b>Object Class</b>	<b>Servicing Agency</b>	<b>Explanation</b>	<b>FY2022 Actuals</b>	<b>FY2023 Management Plan</b>	<b>FY2024 Governor</b>	
3017	Inter-Agency Information Technology Non-Telecommunications	Admin - Department-wide Computer services provided by Department of Administration such as central server, data storage, printing, network services, open connect, and task order system.	0.0	507.2	507.2	
3018	Inter-Agency Information Technology Telecommunications	Admin - Department-wide Telecommunications services provided by the Department of Administration such as basic telephone services, equipment and features, dedicated voice/data line service, statewide paging, two-way radio, and video conferencing.	0.0	112.5	112.5	
3021	Inter-Agency Mail	Admin - Department-wide Chargeback fees for central mail services such as mailing vendor payments and payroll warrants.	0.0	4.2	4.2	
3022	Inter-Agency Human Resources	Admin - Department-wide Interagency Human Resource chargeback.	0.0	212.5	212.5	
3024	Inter-Agency Legal	Law - Department-wide Legal services provided by the Department of Law.	0.0	6.3	6.3	
3026	Inter-Agency Insurance	Admin - Department-wide Risk Management Services for the McKinley Building (leased).	0.0	1.8	1.8	
3027	Inter-Agency Financial	Admin - Department-wide Chargeback fees for HRM/IRIS/ALDER.	0.0	131.9	131.9	
3028	Inter-Agency Americans with Disabilities Act Compliance	Admin - Department-wide Chargeback fees for the statewide coordinator for the Americans with Disabilities Act (ADA).	0.0	3.9	3.9	

**Inter-Agency Services (1682)**  
**Department of Transportation/Public Facilities**

**Component:** Northern Region Design, Engineering, and Construction (3375)

Object Class	Servicing Agency	Explanation	FY2022 Actuals	FY2023 Management Plan	FY2024 Governor
3037 State Equipment Fleet	Trans - State Equipment Fleet (2791)	State Equipment and Fleet operating and replacement fees for approximately 76 vehicles, to include credit card fuel, and vehicle maintenance and repairs. Budgeted amounts, if any, are for operating budget vehicles only; prior year actuals amount includes the cost of capital improvement project vehicles, which are funded through an unbudgeted reimbursable services agreement.	0.0	35.0	35.0

**Personal Services Expenditure Detail**  
**Department of Transportation/Public Facilities**

**Scenario:** FY2024 Governor (19867)  
**Component:** Northern Region Design, Engineering, and Construction (3375)  
**RDU:** Design, Engineering and Construction (526)

PCN	Job Class Title	Time Status	Retire Code	Barg Unit	Location	Salary Sched	Range / Step	Comp Months	Split / Count	Annual Salaries	COLA	Premium Pay	Annual Benefits	Total Costs	UGF Amount
25-0165	Engineering Assistant 3	FT	A	GP	Fairbanks	203	21O	12.0		117,521	4,473	9,047	71,347	202,388	0
25-0202	Engineering Assistant 1	FT	A	GP	Juneau	205	17C / D	12.0		65,246	2,571	7,517	49,093	124,427	0
25-0247	Driller, Sub-Journey	FT	A	LL	Anchorage	2AA	54E / F	12.0		56,205	3,125	11,817	47,407	118,554	0
25-0250	Chief Engineering Geologist	FT	A	SS	Fairbanks	203	24E / F	12.0		120,484	1,703	0	71,505	193,692	0
25-0723	Driller, Journey	PT	A	LL	Fairbanks	2EE	53B / C	9.5		45,929	2,857	16,266	40,981	106,033	0
25-0732	Engineering Geologist 2	FT	A	GP	Fairbanks	203	18C / D	12.0		70,546	3,051	15,795	54,709	144,101	0
25-1239	Assistant Commissioner	FT	A	XE	Fairbanks	N03	27A / B	6.0	*	56,780	0	0	34,249	91,029	72,823
25-1366	Engineer/Architect 4	FT	A	SS	Fairbanks	203	26Q / R	12.0		180,915	2,447	0	95,229	278,591	0
25-1367	Administrative Officer 1	FT	A	SS	Fairbanks	203	17D / E	12.0		72,518	1,025	0	51,666	125,209	86,425
25-1368	Engineer/Architect 4	FT	A	SS	Fairbanks	203	26P / Q	12.0		184,200	2,491	0	96,387	283,078	0
25-1369	Engineer/Architect 5	FT	A	SS	Fairbanks	203	27O	12.0		169,499	2,292	0	91,207	262,998	0
25-1371	Engineer/Architect 3	FT	A	SS	Fairbanks	203	25L	12.0		143,229	2,025	0	80,912	226,166	0
25-1372	Engineer/Architect 4	FT	A	SS	Fairbanks	203	26Q / R	12.0		182,117	2,463	0	95,653	280,233	0
25-1377	Administrative Assistant 2	FT	A	GP	Fairbanks	203	14B / C	12.0		50,252	1,912	3,843	41,372	97,379	0
25-1380	Administrative Assistant 1	FT	A	GP	Fairbanks	203	12A / B	12.0		43,253	1,644	3,268	38,240	86,405	0
25-1381	Procurement Specialist 2	FT	A	GP	Fairbanks	203	16M / N	12.0		79,300	3,016	6,034	54,293	142,643	0
25-1382	Engineer/Architect 1	FT	A	GP	Fairbanks	203	22D / E	12.0		93,889	3,318	0	57,831	155,038	0
25-1384	Engineer/Architect 3	FT	A	SS	Fairbanks	203	25N	12.0		153,424	2,169	0	85,129	240,722	0
25-1385	Accounting Technician 3	FT	A	GP	Fairbanks	203	16J	12.0		71,273	2,713	5,482	50,745	130,213	0
25-1387	Engineering Associate	FT	A	GP	Fairbanks	203	21P / Q	12.0		123,036	5,015	18,866	77,689	224,606	0
25-1388	Right-Of-Way Agent 3	FT	A	GP	Fairbanks	203	18J / K	12.0		82,817	3,148	6,268	55,844	148,077	0
25-1389	Engineer/Architect 3	FT	A	SS	Fairbanks	203	25A / B	12.0		111,632	1,578	0	67,844	181,054	0
25-1390	Land Survey Manager 1	FT	A	SS	Fairbanks	203	23M	12.0		128,794	1,821	0	74,942	205,557	0
25-1391	Right-Of-Way Agent 3	FT	A	GP	Fairbanks	203	18G	12.0		78,254	2,972	5,838	53,779	140,843	0
25-1392	Land Survey Manager 1	FT	A	SS	Fairbanks	2S4	23J	12.0		120,994	1,710	0	71,716	194,420	0
25-1393	Engineer/Architect 3	FT	A	SS	Fairbanks	203	25E / F	12.0		127,795	1,807	0	74,529	204,131	0
25-1394	Engineering Associate	FT	A	GP	Fairbanks	203	21F / G	12.0		94,916	3,354	0	58,256	156,526	0
25-1395	Engineering Associate	FT	A	GP	Fairbanks	203	21N / O	12.0		114,389	4,351	8,716	69,915	197,371	0
25-1396	Engineer/Architect 1	FT	A	GP	Fairbanks	203	22B / C	12.0		89,159	3,151	0	55,875	148,185	0
25-1398	Engineer/Architect 4	FT	A	SS	Fairbanks	203	26Q	12.0		177,542	2,401	0	94,041	273,984	0
25-1399	Right-Of-Way Agent 3	FT	A	GP	Fairbanks	203	18B	12.0		66,183	2,519	5,091	48,478	122,271	0
25-1400	Right-Of-Way Agent 2	FT	A	GP	Fairbanks	203	16K	12.0		73,593	2,801	5,661	51,778	133,833	0
25-1403	Accounting Technician 1	FT	A	GP	Fairbanks	203	12B / C	12.0		44,526	1,693	3,369	38,808	88,396	0
25-1405	Engineering Associate	FT	A	GP	Valdez	211	21J	12.0		107,445	4,381	16,530	70,275	198,631	0
25-1406	Engineering Assistant 3	FT	A	GP	Fairbanks	203	21L / M	12.0		107,157	4,076	8,176	66,700	186,109	0
25-1407	Engineer/Architect 3	FT	A	SS	Fairbanks	203	25J	12.0		134,347	1,899	0	77,239	213,485	0
25-1409	Engineering Assistant 3	FT	A	GP	Fairbanks	203	21M	12.0		109,746	4,177	8,442	67,881	190,246	0
25-1410	Accountant 3	FT	A	GG	Fairbanks	203	18O / P	12.0		97,437	3,703	7,356	62,341	170,837	0

Note: If a position is split, an asterisk (\*) will appear in the Split/Count column. If the split position is also counted in the component, two asterisks (\*\*) will appear in this column. [No valid job title] appearing in the Job Class Title indicates that the PCN has an invalid class code or invalid range for the class code effective date of this scenario.

**Personal Services Expenditure Detail**  
**Department of Transportation/Public Facilities**

**Scenario:** FY2024 Governor (19867)  
**Component:** Northern Region Design, Engineering, and Construction (3375)  
**RDU:** Design, Engineering and Construction (526)

PCN	Job Class Title	Time Status	Retire Code	Barg Unit	Location	Salary Sched	Range / Step	Comp Months	Split / Count	Annual Salaries	COLA	Premium Pay	Annual Benefits	Total Costs	UGF Amount
25-1411	Engineer/Architect 3	FT	A	SS	Fairbanks	203	25M	12.0		147,867	2,090	0	82,830	232,787	0
25-1412	Engineering Assistant 3	FT	A	GP	Fairbanks	203	21N / O	12.0		114,666	4,668	17,433	73,635	210,402	0
25-1414	Right-Of-Way Agent 4	FT	A	SS	Fairbanks	203	20M / N	12.0		105,513	1,492	0	65,313	172,318	0
25-1415	Right-Of-Way Agent 4	FT	A	SS	Fairbanks	203	20L / M	12.0		102,196	1,445	0	63,941	167,582	0
25-1416	Right-Of-Way Agent 3	FT	A	GP	Fairbanks	203	18J / K	12.0		81,712	3,109	6,268	55,387	146,476	0
25-1419	Engineer/Architect 4	FT	A	SS	Fairbanks	203	26M	12.0		153,192	2,166	0	85,033	240,391	0
25-1421	Engineering Assistant 3	FT	A	GP	Fairbanks	203	21G / J	12.0		98,365	3,736	7,360	62,727	172,188	0
25-1423	Right-Of-Way Agent 2	FT	A	GP	Fairbanks	203	16N	12.0		81,003	3,083	6,231	55,079	145,396	0
25-1425	Right-Of-Way Assistant	FT	A	GP	Fairbanks	203	12A / B	12.0		43,688	1,659	3,268	38,420	87,035	0
25-1426	Environmental Impact Analyst 3	FT	A	GP	Fairbanks	203	19G / J	12.0		84,030	3,197	6,430	56,413	150,070	0
25-1432	Engineer/Architect 1	FT	A	GP	Fairbanks	203	22G / J	12.0		106,802	3,774	0	63,172	173,748	0
25-1433	Engineer/Architect 3	FT	A	SS	Fairbanks	203	25E / F	12.0		129,154	1,826	0	75,091	206,071	0
25-1434	Engineer/Architect 1	FT	A	GP	Fairbanks	203	22K / L	12.0		112,205	3,965	0	65,407	181,577	0
25-1435	Engineer/Architect 3	FT	A	SS	Fairbanks	203	25J	12.0		134,347	1,899	0	77,239	213,485	0
25-1436	Engineering Assistant 3	FT	A	GP	Fairbanks	203	21K / L	12.0		103,639	4,222	15,837	68,414	192,112	0
25-1437	Engineer/Architect 1	FT	A	GP	Fairbanks	203	22E / F	12.0		97,780	3,456	0	59,440	160,676	0
25-1439	Engineering Assistant 3	FT	A	GP	Fairbanks	203	21M / N	12.0		109,895	4,107	6,331	67,070	187,403	0
25-1441	Engineering Assistant 3	FT	A	GP	Fairbanks	203	21B / C	12.0		83,390	3,168	6,240	56,070	148,868	0
25-1443	Engineering Assistant 2	FT	A	GP	Fairbanks	203	19K	12.0		89,895	3,666	13,830	61,899	169,290	0
25-1444	Engineer/Architect 1	FT	A	GP	Fairbanks	203	22F / G	12.0		100,496	3,552	0	60,564	164,612	0
25-1446	Engineering Assistant 3	FT	A	GP	Fairbanks	203	21B / C	12.0		82,833	3,258	9,360	57,130	152,581	0
25-1447	Engineering Assistant 3	FT	A	GP	Fairbanks	203	21M	12.0		109,746	4,475	16,884	71,373	202,478	0
25-1449	Engineering Assistant 2	FT	A	GP	Fairbanks	203	19D / E	12.0		77,634	3,156	11,670	55,935	148,395	0
25-1451	Administrative Assistant 2	FT	A	GP	Fairbanks	203	14M	12.0		68,314	2,600	5,258	49,428	125,600	0
25-1455	Engineering Assistant 3	FT	A	GP	Fairbanks	203	21J / K	12.0		100,648	4,099	15,339	66,971	187,057	0
25-1457	Engineering Assistant 1	FT	A	GP	Fairbanks	203	17A / B	12.0		61,640	2,513	9,483	48,415	122,051	0
25-1459	Engineering Assistant 2	FT	A	GP	Fairbanks	203	19J	12.0		87,068	3,550	13,395	60,550	164,563	0
25-1460	Right-Of-Way Agent 3	FT	A	GP	Fairbanks	203	18F / G	12.0		77,054	2,929	5,835	53,282	139,100	0
25-1461	Administrative Assistant 1	FT	A	GP	Fairbanks	203	12B / C	12.0		45,279	1,723	3,483	39,167	89,652	0
25-1464	Eng Tech Jrny	PT	A	LL	Fairbanks	2EE	54J	8.0		41,717	2,331	9,027	33,836	86,911	0
25-1465	Eng Tech Jrny	PT	A	LL	Fairbanks	2EE	54D / E	8.0		38,564	2,147	8,178	32,181	81,070	0
25-1467	Eng Tech Jrny	PT	A	LL	Nome	2II	54B / C	8.0		38,214	2,323	12,357	33,765	86,659	0
25-1468	Eng Tech Jrny	PT	A	LL	Fairbanks	2EE	54F / J	8.0		40,373	2,255	8,721	33,154	84,503	0
25-1469	Eng Tech Jrny	PT	A	LL	Fairbanks	2EE	54D / E	8.0		39,027	2,181	8,445	32,483	82,136	0
25-1473	Engineering Assistant 3	FT	A	GP	Fairbanks	203	21F / G	12.0		95,687	3,837	12,880	63,902	176,306	0
25-1474	Eng Tech Jrny	PT	A	LL	Fairbanks	2EE	54Q	8.0		53,224	2,974	11,517	39,625	107,340	0
25-1479	Eng Tech Jrny	PT	A	LL	Fairbanks	2EE	54C	8.0		36,601	2,045	7,920	31,262	77,828	0
25-1480	E/T Subjry 3	PT	A	LL	Fairbanks	2EE	55A / B	8.0		33,045	1,843	7,065	29,438	71,391	0

Note: If a position is split, an asterisk (\*) will appear in the Split/Count column. If the split position is also counted in the component, two asterisks (\*\*) will appear in this column. [No valid job title] appearing in the Job Class Title indicates that the PCN has an invalid class code or invalid range for the class code effective date of this scenario.

**Personal Services Expenditure Detail**  
**Department of Transportation/Public Facilities**

**Scenario:** FY2024 Governor (19867)  
**Component:** Northern Region Design, Engineering, and Construction (3375)  
**RDU:** Design, Engineering and Construction (526)

PCN	Job Class Title	Time Status	Retire Code	Barg Unit	Location	Salary Sched	Range / Step	Comp Months	Split / Count	Annual Salaries	COLA	Premium Pay	Annual Benefits	Total Costs	UGF Amount
25-1482	E/T Subjrny 3	PT	A	LL	Nome	2II	55B / C	6.0		27,919	1,824	11,790	26,060	67,593	0
25-1484	E/T Subjrny 3	PT	A	LL	Fairbanks	2EE	55B / C	8.0		34,650	1,927	7,293	30,196	74,066	0
25-1485	E/T Subjrny 3	PT	A	LL	Fairbanks	2EE	55F	8.0		38,279	2,139	8,283	32,106	80,807	0
25-1486	E/T Subjrny 3	PT	A	LL	Fairbanks	2EE	55A / B	8.0		33,045	1,843	7,065	29,438	71,391	0
25-1487	E/T Subjrny 2	PT	A	LL	Nome	2II	57B	6.0		24,581	1,455	7,092	22,736	55,864	0
25-1490	Eng Tech Jrny	PT	A	LL	Fairbanks	2EE	54F	9.5		47,859	2,599	8,721	38,659	97,838	0
25-1491	Driller, Sub-Journey	PT	A	LL	Fairbanks	2EE	54E / F	9.5		47,700	2,773	12,667	40,225	103,365	0
25-1492	E/T Subjrny 3	PT	A	LL	Fairbanks	2EE	55B / C	8.0		34,352	1,913	7,293	30,073	73,631	0
25-1494	Maint Gen Jrny	FT	A	LL	Fairbanks	2EE	54J	12.0		62,575	3,497	13,540	50,754	130,366	0
25-1500	Survey, Journey	PT	A	LL	Fairbanks	2EE	54J	9.5		49,539	2,898	13,540	41,347	107,324	0
25-1502	E/T Subjrny 2	PT	A	LL	Fairbanks	2EE	57B	6.0		22,740	1,346	6,561	21,755	52,402	0
25-1506	E/T Subjrny 2	PT	A	LL	Nome	2II	57B / C	6.0		25,236	1,485	7,092	23,007	56,820	0
25-1507	E/T Subjrny 2	PT	A	LL	Fairbanks	2EE	57B	6.0		22,740	1,346	6,561	21,755	52,402	0
25-1508	E/T Subjrny 2	PT	A	LL	Fairbanks	2EE	57E / F	6.0		25,683	1,511	7,215	23,243	57,652	0
25-1511	E/T Subjrny 2	PT	A	LL	Fairbanks	2EE	57B	6.0		22,740	1,346	6,561	21,755	52,402	0
25-1518	E/T Subjrny 2	PT	A	LL	Fairbanks	2EE	57C	6.0		23,468	1,389	6,771	22,143	53,771	0
25-1519	E/T Subjrny 2	PT	A	LL	Fairbanks	2EE	57C	6.0		23,468	1,389	6,771	22,143	53,771	0
25-1524	Eng Tech Jrny	PT	A	LL	Fairbanks	2EE	54L / M	8.0		45,699	2,544	9,675	35,751	93,669	0
25-1525	E/T Subjrny 2	PT	A	LL	Fairbanks	2EE	57B	6.0		22,740	1,346	6,561	21,755	52,402	0
25-1527	Engineer/Architect 4	FT	A	SS	Fairbanks	203	26M	12.0		153,192	2,166	0	85,033	240,391	0
25-1529	Env Imp A Mgr 1	FT	A	SS	Fairbanks	203	21M	12.0		112,362	1,588	0	68,146	182,096	0
25-1530	Engineering Assistant 3	FT	A	GP	Fairbanks	203	21N / O	12.0		115,618	4,394	8,716	70,423	199,151	0
25-1531	Engineer/Architect 1	FT	A	GG	Fairbanks	203	22P	12.0		130,648	4,617	0	73,035	208,300	0
25-1532	Environmental Impact Analyst 3	FT	A	GP	Fairbanks	203	19E / F	12.0		78,612	3,310	15,048	57,736	154,706	0
25-1533	Tech Eng/Arch 1	FT	A	GP	Fairbanks	203	24O	12.0		144,782	5,117	0	78,880	228,779	0
25-1534	Engineering Assistant 3	FT	A	GP	Fairbanks	203	21K / L	12.0		104,170	4,101	11,877	66,996	187,144	0
25-1536	Environmental Impact Analyst 3	FT	A	GP	Fairbanks	203	19L / M	12.0		94,822	3,982	17,850	65,600	182,254	0
25-1537	Engineering Assistant 3	FT	A	GP	Fairbanks	203	21C / D	12.0		86,385	3,280	6,430	57,387	153,482	0
25-1538	Engineering Assistant 2	FT	A	GP	Fairbanks	203	19C / D	12.0		74,025	2,914	8,439	53,106	138,484	0
25-1540	Engineering Associate	FT	A	GP	Juneau	205	21G / J	12.0		99,041	4,030	15,006	66,168	184,245	0
25-1541	Engineering Assistant 2	FT	A	GP	Fairbanks	203	19E / F	12.0		80,523	3,271	12,039	57,282	153,115	0
25-1542	Engineering Assistant 2	FT	A	GP	Fairbanks	203	19G / J	12.0		87,068	3,463	10,916	59,525	160,972	0
25-1544	Right-Of-Way Agent 3	FT	A	GP	Fairbanks	203	18F / G	12.0		77,294	2,938	5,835	53,381	139,448	0
25-1545	Environmental Impact Analyst 3	FT	A	GP	Fairbanks	203	19G / J	12.0		84,869	3,567	16,076	60,750	165,262	0
25-1546	Engineering Assistant 2	FT	A	GP	Fairbanks	203	19C / D	12.0		73,777	2,906	8,439	53,003	138,125	0
25-1548	Engineering Assistant 2	FT	A	GP	Delta	200	19E / F	12.0		77,482	3,151	11,688	55,879	148,200	0

Note: If a position is split, an asterisk (\*) will appear in the Split/Count column. If the split position is also counted in the component, two asterisks (\*\*) will appear in this column. [No valid job title] appearing in the Job Class Title indicates that the PCN has an invalid class code or invalid range for the class code effective date of this scenario.



**Personal Services Expenditure Detail**  
**Department of Transportation/Public Facilities**

**Scenario:** FY2024 Governor (19867)  
**Component:** Northern Region Design, Engineering, and Construction (3375)  
**RDU:** Design, Engineering and Construction (526)

PCN	Job Class Title	Time Status	Retire Code	Barg Unit	Location	Salary Sched	Range / Step	Comp Months	Split / Count	Annual Salaries	COLA	Premium Pay	Annual Benefits	Total Costs	UGF Amount
25-1551	Engineering Associate	FT	A	GP	Fairbanks	203	21M	12.0		109,746	3,878	0	64,390	178,014	0
25-1555	Engineering Assistant 1	FT	A	GP	Fairbanks	203	17B / C	12.0		62,752	2,553	9,483	48,875	123,663	0
25-1556	Environmental Impact Analyst 3	FT	A	GP	Fairbanks	203	19B / C	12.0		72,448	3,042	13,620	54,596	143,706	0
25-1557	Engineering Assistant 2	FT	A	GP	Fairbanks	203	19C / D	12.0		73,461	2,994	11,253	54,036	141,744	0
25-1558	Drafting Technician 3	FT	A	GP	Fairbanks	203	15G	12.0		63,902	2,606	9,831	49,495	125,834	0
25-1559	Administrative Officer 1	FT	A	GP	Fairbanks	203	17B / C	12.0		61,828	2,520	9,483	48,493	122,324	0
25-1565	Survey Lead	PT	A	LL	Fairbanks	2EE	53L	9.5		56,338	3,296	15,399	44,928	119,961	0
25-1566	E/T Subjrnly 2	PT	A	LL	Fairbanks	2EE	57B	6.0		22,740	1,346	6,561	21,755	52,402	0
25-1569	E/T Subjrnly 2	PT	A	LL	Fairbanks	2EE	57B	6.0		22,740	1,346	6,561	21,755	52,402	0
25-1570	Engineering Assistant 3	FT	A	GP	Fairbanks	203	21B / C	12.0		83,225	2,941	0	53,421	139,587	0
25-1571	Land Surveyor 2	FT	A	GP	Fairbanks	203	22C	12.0		89,388	3,159	0	55,970	148,517	0
25-1572	Right-Of-Way Agent 3	FT	A	GP	Fairbanks	203	18J	12.0		81,491	3,101	6,268	55,296	146,156	0
25-1573	Engineering Associate	FT	A	GP	Fairbanks	203	21G	12.0		95,687	3,902	14,721	64,663	178,973	0
25-1576	Engineering Assistant 3	FT	A	GP	Nome	237	21L	12.0		141,375	5,515	21,750	86,288	254,928	0
25-1578	Engineering Assistant 3	FT	A	GP	Fairbanks	203	21K	12.0		102,941	3,638	0	61,575	168,154	0
25-1579	Engineering Assistant 2	FT	A	GP	Fairbanks	203	19C	12.0		73,145	2,883	8,439	52,742	137,209	0
25-1580	Engineering Assistant 2	FT	A	GP	Fairbanks	203	19K / L	12.0		92,333	3,752	13,830	62,908	172,823	0
25-1581	Engineer/Architect 3	FT	A	SS	Fairbanks	203	25O / P	12.0		159,614	2,194	0	87,689	249,497	0
25-1582	Engineering Assistant 2	FT	A	GP	Fairbanks	203	19F / G	12.0		81,430	3,319	12,480	57,840	155,069	0
25-1596	E/T Subjrnly 2	PT	A	LL	Fairbanks	2EE	57B	6.0		22,740	1,346	6,561	21,755	52,402	0
25-1599	Engineering Assistant 3	FT	A	GP	Fairbanks	203	21A / B	12.0		79,926	2,825	0	52,056	134,807	0
25-1602	Engineer/Architect 3	FT	A	SS	Fairbanks	203	25L / M	12.0		147,481	2,085	0	82,671	232,237	0
25-1603	Engineer/Architect 3	FT	A	SS	Fairbanks	203	25M	12.0		147,867	2,090	0	82,830	232,787	0
25-1604	Environmental Impact Analyst 2	FT	A	GP	Fairbanks	203	17B / C	12.0		62,903	2,642	11,853	49,918	127,316	0
25-1607	Engineering Assistant 3	FT	A	GP	Fairbanks	203	21F / G	12.0		94,146	3,327	0	57,937	155,410	0
25-1609	Engineering Associate	FT	A	GP	Fairbanks	203	21E / F	12.0		91,131	3,707	13,752	62,378	170,968	0
25-1611	Engineering Assistant 3	FT	A	GP	Fairbanks	203	21L	12.0		106,295	3,756	0	62,962	173,013	0
25-1612	Survey Lead	PT	A	LL	Fairbanks	2EE	53M / N	9.5		59,204	3,452	15,943	46,338	124,937	0
25-1615	E/T Subjrnly 3	PT	A	LL	Fairbanks	2EE	55B	8.0		33,703	1,883	7,293	29,804	72,683	0
25-1622	Engineering Assistant 1	FT	A	GP	Fairbanks	203	17A / B	12.0		61,453	2,414	6,853	47,250	117,970	0
25-1624	Engineering Geologist 2	FT	A	GP	Fairbanks	203	18B / C	12.0		68,257	2,952	15,273	53,547	140,029	0
25-1625	Engineering Assistant 1	FT	A	GP	Fairbanks	203	17C / D	12.0		64,168	2,615	9,831	49,605	126,219	0
25-1627	Engineering Assistant 2	FT	A	GP	Nome	237	19B / C	12.0		96,840	4,191	21,739	68,043	190,813	0
25-1630	Procurement Specialist 3	FT	A	SS	Fairbanks	203	18Q / R	12.0		105,414	1,597	7,551	68,395	182,957	0
25-1632	Engineering Assistant 3	FT	A	GP	Fairbanks	203	21G	12.0		95,687	3,902	14,721	64,663	178,973	0
25-1634	Engineer/Architect 5	FT	A	SS	Fairbanks	203	27N	12.0		164,174	2,220	0	89,331	255,725	0

Note: If a position is split, an asterisk (\*) will appear in the Split/Count column. If the split position is also counted in the component, two asterisks (\*\*) will appear in this column. [No valid job title] appearing in the Job Class Title indicates that the PCN has an invalid class code or invalid range for the class code effective date of this scenario.

**Personal Services Expenditure Detail**  
**Department of Transportation/Public Facilities**

**Scenario:** FY2024 Governor (19867)  
**Component:** Northern Region Design, Engineering, and Construction (3375)  
**RDU:** Design, Engineering and Construction (526)

PCN	Job Class Title	Time Status	Retire Code	Barg Unit	Location	Salary Sched	Range / Step	Comp Months	Split / Count	Annual Salaries	COLA	Premium Pay	Annual Benefits	Total Costs	UGF Amount
25-1635	Engineering Geologist 2	FT	A	GP	Fairbanks	203	18B / C	12.0		66,937	2,905	15,273	53,001	138,116	0
25-1636	Engineering Geologist 2	FT	A	GP	Fairbanks	203	18G / J	12.0		79,440	3,339	15,048	58,079	155,906	0
25-1637	Engineering Assistant 2	FT	A	GP	Fairbanks	203	19B / C	12.0		72,951	2,963	10,896	53,678	140,488	0
25-1639	Engineering Assistant 3	FT	A	GP	Fairbanks	203	21E / F	12.0		89,442	3,525	10,314	60,258	163,539	0
25-1642	Driller, Journey	FT	A	LL	Anchorage	2AA	53K	12.0		64,800	3,836	18,696	53,807	141,139	0
25-1643	Eng Tech Jrny	PT	A	LL	Fairbanks	2EE	54D	9.5		44,880	2,438	8,178	37,202	92,698	0
25-1644	Driller, Sub-Journey	PT	A	LL	Fairbanks	2EE	54B	9.5		42,097	2,463	11,506	37,428	93,494	0
25-1645	Driller, Journey	FT	A	LL	Fairbanks	2EE	53K / L	12.0		71,063	4,176	19,830	56,866	151,935	0
25-1647	Tech Eng/Arch 1	FT	A	GP	Fairbanks	203	24E / F	12.0		112,325	3,970	0	65,456	181,751	0
25-1648	Eng Tech Jrny	PT	A	LL	Fairbanks	2EE	54J	9.5		49,539	2,691	9,027	39,480	100,737	0
25-1656	Engineering Assistant 3	FT	A	GP	Fairbanks	203	21F / G	12.0		93,889	3,822	14,247	63,724	175,682	0
25-1657	Engineering Assistant 3	FT	A	GP	Fairbanks	203	21J / K	12.0		100,648	4,099	15,339	66,971	187,057	0
25-1658	Engineering Assistant 3	FT	A	GP	Fairbanks	203	21G / J	12.0		99,704	3,930	11,504	64,994	180,132	0
25-1659	Engineering Assistant 2	FT	A	GP	Fairbanks	203	19A / B	12.0		69,833	2,840	10,530	52,237	135,440	0
25-1660	Engineering Assistant 2	FT	A	GP	Fairbanks	203	19C / D	12.0		73,461	2,994	11,253	54,036	141,744	0
25-1661	Engineering Assistant 2	FT	A	GP	Fairbanks	203	19B / C	12.0		72,951	2,963	10,896	53,678	140,488	0
25-1667	Eng Tech Jrny	PT	A	LL	Fairbanks	2EE	54F	9.5		47,859	2,599	8,721	38,659	97,838	0
25-1668	Eng Tech Jrny	PT	A	LL	Nome	2II	54B / C	9.5		45,252	2,647	12,357	39,085	99,341	0
25-1673	Engineering Associate	FT	A	GP	Fairbanks	203	21J / K	12.0		100,243	3,543	0	60,459	164,245	0
25-1674	Accounting Technician 1	FT	A	GP	Fairbanks	203	12L / M	12.0		58,637	2,228	4,414	45,077	110,356	0
25-1677	Engineer/Architect 3	FT	A	SS	Fairbanks	203	25M	12.0		147,867	2,090	0	82,830	232,787	0
25-1678	E/T Subjrny 3	PT	A	LL	Fairbanks	2EE	55M	8.0		43,935	2,455	9,507	34,952	90,849	0
25-1682	Survey, Sub-Journey 2	PT	A	LL	Fairbanks	2EE	56J	9.5		44,402	2,597	12,136	38,642	97,777	0
25-1683	Engineering Assistant 2	FT	A	GP	Fairbanks	203	19C / D	12.0		75,019	2,949	8,439	53,517	139,924	0
25-1684	E/T Subjrny 2	PT	A	LL	Fairbanks	2EE	57B	6.0		22,740	1,346	6,561	21,755	52,402	0
25-1688	E/T Subjrny 2	PT	A	LL	Fairbanks	2EE	57B	6.0		22,740	1,346	6,561	21,755	52,402	0
25-1689	E/T Subjrny 2	PT	A	LL	Fairbanks	2EE	57B	7.0		26,530	1,520	6,561	24,929	59,540	0
25-1693	E/T Subjrny 2	PT	A	LL	Fairbanks	2EE	57B	7.0		26,530	1,520	6,561	24,929	59,540	0
25-1694	Survey, Sub-Journey 2	PT	A	LL	Fairbanks	2EE	56M	9.5		49,242	2,881	13,459	41,191	106,773	0
25-1700	E/T Subjrny 2	PT	A	LL	Fairbanks	2EE	57B	7.0		26,530	1,520	6,561	24,929	59,540	0
25-1701	E/T Subjrny 2	PT	A	LL	Fairbanks	2EE	57A / B	7.0		25,941	1,484	6,357	24,601	58,383	0
25-1704	Engineering Assistant 1	FT	A	GP	Fairbanks	203	17C / D	12.0		64,092	2,526	7,373	48,557	122,548	0
25-1705	Engineering Associate	FT	A	GP	Fairbanks	203	21E / F	12.0		89,871	3,662	13,752	61,857	169,142	0
25-1707	Engineer/Architect 3	FT	A	SS	Fairbanks	203	25F	12.0		130,125	1,839	0	75,492	207,456	0
25-1708	Engineer/Architect 3	FT	A	SS	Fairbanks	203	25M / N	12.0		151,271	2,138	0	84,238	237,647	0
25-1710	E/T Subjrny 2	PT	A	LL	Fairbanks	2EE	57B / C	7.0		27,258	1,554	6,561	25,230	60,603	0
25-1712	Engineering Assistant 3	FT	A	GP	Fairbanks	203	21C / D	12.0		83,901	3,192	6,430	56,360	149,883	0
25-1715	Eng Tech Jrny	PT	A	LL	Nome	2II	54F	8.0		42,923	2,612	13,932	36,364	95,831	0

Note: If a position is split, an asterisk (\*) will appear in the Split/Count column. If the split position is also counted in the component, two asterisks (\*\*) will appear in this column. [No valid job title] appearing in the Job Class Title indicates that the PCN has an invalid class code or invalid range for the class code effective date of this scenario.

**Personal Services Expenditure Detail**  
**Department of Transportation/Public Facilities**

**Scenario:** FY2024 Governor (19867)  
**Component:** Northern Region Design, Engineering, and Construction (3375)  
**RDU:** Design, Engineering and Construction (526)

PCN	Job Class Title	Time Status	Retire Code	Barg Unit	Location	Salary Sched	Range / Step	Comp Months	Split / Count	Annual Salaries	COLA	Premium Pay	Annual Benefits	Total Costs	UGF Amount
25-1729	Right-Of-Way Agent 3	FT	A	GP	Fairbanks	203	18G	12.0		78,254	2,978	6,019	53,854	141,105	0
25-1731	Engineering Assistant 3	FT	A	GP	Fairbanks	203	21C / D	12.0		85,549	3,364	9,645	58,371	156,929	0
25-1732	Administrative Assistant 2	FT	A	GP	Fairbanks	203	14R	12.0		81,501	3,102	6,274	55,302	146,179	0
25-1737	Office Assistant 2	FT	A	GP	Fairbanks	203	10Q / R	12.0		60,474	2,137	0	44,011	106,622	0
25-1740	Land Surveyor 1	FT	A	GP	Fairbanks	203	21O / P	12.0		118,947	5,163	27,146	79,423	230,679	0
25-1742	Engineering Assistant 3	FT	A	GP	Fairbanks	203	21K	12.0		102,941	4,058	11,877	66,487	185,363	0
25-1745	E/T Subjrny 2	PT	A	LL	Fairbanks	2EE	57B	7.0		26,530	1,520	6,561	24,929	59,540	0
25-1748	Eng Tech Jrny	PT	A	LL	Fairbanks	2EE	54K	8.0		43,186	2,413	9,345	34,575	89,519	0
25-1752	Accountant 4	FT	A	SS	Fairbanks	203	20S / T	12.0		135,801	1,920	0	77,840	215,561	0
25-1756	Administrative Assistant 1	FT	A	GP	Fairbanks	203	12A / B	12.0		44,658	1,698	3,377	38,866	88,599	0
25-1757	Office Assistant 2	FT	A	GP	Fairbanks	203	10J / K	12.0		48,287	1,706	0	38,970	88,963	0
25-1758	Eng Tech Jrny	PT	A	LL	Fairbanks	2EE	54J	8.0		41,717	2,331	9,027	33,836	86,911	0
25-1761	Engineering Assistant 2	FT	A	GP	Fairbanks	203	19E / F	12.0		78,731	3,208	12,039	56,541	150,519	0
25-1762	E/T Subjrny 3	PT	A	LL	Fairbanks	2EE	55B	8.0		33,703	1,883	7,293	29,804	72,683	0
25-1765	Engineering Assistant 3	FT	A	GP	Fairbanks	203	21P / Q	12.0		123,086	5,013	18,772	77,671	224,542	0
25-1766	Engineer/Architect 3	FT	A	SS	Fairbanks	203	25L / M	12.0		147,674	2,088	0	82,751	232,513	0
25-1767	Office Assistant 2	FT	A	GP	Fairbanks	203	10C / D	12.0		40,492	1,431	0	35,746	77,669	0
25-1768	Land Surveyor 1	FT	A	GP	Fairbanks	203	21B	12.0		81,120	3,528	18,720	60,292	163,660	0
25-1770	Drafting Technician 3	FT	A	GP	Fairbanks	203	15L / M	12.0		72,551	2,950	10,911	53,519	139,931	0
25-1771	Environmental Impact Analyst 2	FT	A	GP	Fairbanks	203	17B / C	12.0		61,922	2,607	11,853	49,512	125,894	0
25-1775	Driller, Journey	PT	A	LL	Fairbanks	2EE	53L	9.5		56,338	3,532	20,532	47,051	127,453	0
25-1776	E/T Subjrny 3	PT	A	LL	Fairbanks	2EE	55B	9.5		40,023	2,341	10,939	36,335	89,638	0
25-1777	Engineering Assistant 2	FT	A	GP	Fairbanks	203	19B / C	12.0		71,017	2,799	8,172	51,751	133,739	0
25-1780	Engineering Assistant 3	FT	A	GP	Nome	237	21L	12.0		141,375	5,515	21,750	86,288	254,928	0
25-1781	Engineering Assistant 3	FT	A	GP	Fairbanks	203	21L	12.0		106,295	4,479	20,441	71,417	202,632	0
25-1782	Engineering Assistant 3	FT	A	GP	Fairbanks	203	21C / D	12.0		86,385	3,507	12,861	60,047	162,800	0
25-1784	Engineering Assistant 3	FT	A	GP	Fairbanks	203	21F / G	12.0		93,633	3,750	12,466	62,881	172,730	0
25-1785	Engineering Associate	FT	A	GP	Nome	237	21J / K	12.0		134,050	5,458	20,403	82,880	242,791	0
25-1786	E/T Subjrny 3	PT	A	LL	Nome	2II	55B / C	7.5		34,094	2,108	11,790	31,023	79,015	0
25-1787	E/T Subjrny 2	PT	A	LL	Fairbanks	2EE	57C	7.5		29,335	1,659	6,771	26,979	64,744	0
25-1789	E/T Subjrny 3	PT	A	LL	Nome	2II	55P / Q	7.5		48,385	2,989	16,677	38,955	107,006	0
25-1790	E/T Subjrny 2	PT	A	LL	Nome	2II	57B	6.0		24,581	1,455	7,092	22,736	55,864	0
25-1794	E/T Subjrny 2	PT	A	LL	Nome	2II	57B	6.0		24,581	1,455	7,092	22,736	55,864	0
25-1795	Engineer/Architect 2	FT	A	SS	Nome	237	23A / B	12.0		129,594	2,026	13,727	80,950	226,297	0
25-1796	Engineering Assistant 3	FT	A	GP	Fairbanks	203	21N / O	12.0		113,775	4,637	17,433	73,266	209,111	0
25-1797	Engineering Associate	FT	A	GP	Fairbanks	203	21C	12.0		83,597	3,409	12,861	58,894	158,761	0
25-1802	Engineering Assistant 1	FT	A	GP	Fairbanks	203	17B / C	12.0		63,619	2,583	9,483	49,234	124,919	0
25-1803	E/T Subjrny 3	PT	A	LL	Nome	2II	55B	7.5		34,053	2,106	11,790	31,006	78,955	0

Note: If a position is split, an asterisk (\*) will appear in the Split/Count column. If the split position is also counted in the component, two asterisks (\*\*) will appear in this column. [No valid job title] appearing in the Job Class Title indicates that the PCN has an invalid class code or invalid range for the class code effective date of this scenario.

**Personal Services Expenditure Detail**  
**Department of Transportation/Public Facilities**

**Scenario:** FY2024 Governor (19867)  
**Component:** Northern Region Design, Engineering, and Construction (3375)  
**RDU:** Design, Engineering and Construction (526)

PCN	Job Class Title	Time Status	Retire Code	Barg Unit	Location	Salary Sched	Range / Step	Comp Months	Split / Count	Annual Salaries	COLA	Premium Pay	Annual Benefits	Total Costs	UGF Amount
25-1807	Engineering Associate	FT	A	GP	Nome	237	21P / Q	12.0		163,739	6,169	18,729	93,102	281,739	0
25-1812	Engineering Assistant 2	FT	A	GP	Fairbanks	203	19J	12.0		87,068	3,550	13,395	60,550	164,563	0
25-1816	Engineering Associate	FT	A	GP	Nome	237	21O / P	12.0		167,385	6,527	25,667	96,831	296,410	0
25-1819	E/T Subjrnly 2	PT	A	LL	Nome	211	57B	7.0		28,678	1,643	7,092	26,037	63,450	0
25-1822	Engineering Assistant 2	FT	A	GP	Nome	237	19E / F	12.0		106,309	4,323	16,014	69,591	196,237	0
25-1823	Eng Tech Jrny	PT	A	LL	Nome	211	54F	8.0		42,923	2,612	13,932	36,364	95,831	0
25-1825	Engineering Assistant 3	FT	A	GP	Nome	237	21E / F	12.0		121,215	4,769	13,718	74,807	214,509	0
25-1827	Engineer/Architect 2	FT	A	SS	Fairbanks	203	23K / L	12.0		122,039	1,725	0	72,148	195,912	0
25-1832	Tech Eng/Arch 1	FT	A	GP	Fairbanks	203	24A / B	12.0		97,780	3,976	14,721	65,529	182,006	0
25-1838	Engineer/Architect 3	FT	A	SS	Fairbanks	203	25J	12.0		134,347	1,899	0	77,239	213,485	0
25-1843	Engineering Assistant 2	FT	A	GP	Fairbanks	203	19C / D	12.0		75,855	3,093	11,670	55,199	145,817	0
25-1850	Environmental Impact Analyst 3	FT	A	GP	Fairbanks	203	19J / K	12.0		89,542	3,756	16,743	62,958	172,999	0
25-1852	Eng Tech Jrny	PT	A	LL	Fairbanks	2EE	54K	9.5		51,284	2,785	9,345	40,334	103,748	0
25-1854	E/T Subjrnly 3	PT	A	LL	Fairbanks	2EE	55C	8.0		34,785	1,944	7,527	30,349	74,605	0
25-1857	E/T Subjrnly 3	PT	A	LL	Fairbanks	2EE	55C / D	8.0		34,953	1,952	7,527	30,418	74,850	0
25-1862	Eng Tech Jrny	PT	A	LL	Fairbanks	2EE	54J	9.5		49,539	2,691	9,027	39,480	100,737	0
25-1869	Accounting Technician 2	FT	A	GP	Fairbanks	203	14E / F	12.0		56,769	2,157	4,267	44,243	107,436	0
25-1871	Survey Lead	PT	A	LL	Fairbanks	2EE	53N	9.5		60,405	3,534	16,510	47,070	127,519	0
25-1875	E/T Subjrnly 3	PT	A	LL	Fairbanks	2EE	55F	8.0		38,279	2,139	8,283	32,106	80,807	0
25-1876	E/T Subjrnly 3	PT	A	LL	Fairbanks	2EE	55B	8.0		33,703	1,883	7,293	29,804	72,683	0
25-1880	E/T Subjrnly 2	PT	A	LL	Fairbanks	2EE	57B	7.0		26,530	1,520	6,561	24,929	59,540	0
25-2410	Environmental Impact Analyst 3	FT	A	GP	Fairbanks	203	19E / F	12.0		78,970	3,323	15,048	57,884	155,225	0
25-2418	Tech Eng/Arch 1	FT	A	GP	Fairbanks	203	24M	12.0		135,155	4,776	0	74,899	214,830	0
25-3401	Engineering Associate	FT	A	GP	Fairbanks	203	21M / N	12.0		110,638	4,507	16,884	71,742	203,771	0
25-3402	Engineering Assistant 3	FT	A	GP	Nome	237	21B / C	12.0		108,058	4,405	16,599	70,557	199,619	0
25-3405	Engineering Assistant 1	FT	A	GP	Fairbanks	203	17B / C	12.0		62,733	2,552	9,483	48,867	123,635	0
25-3449	Engineering Assistant 2	FT	A	GP	Fairbanks	203	19B / C	12.0		71,868	2,829	8,172	52,103	134,972	0
25-3450	Engineering Assistant 3	FT	A	GP	Fairbanks	203	21M	12.0		109,746	4,326	12,663	69,627	196,362	0
25-3452	Engineer/Architect 1	FT	A	GP	Fairbanks	203	22C	12.0		89,388	3,159	0	55,970	148,517	0
25-3453	Engineering Assistant 3	FT	A	GP	Fairbanks	203	21D / E	12.0		86,982	3,427	9,996	59,109	159,514	0
25-3516	Engineer/Architect 3	FT	A	SS	Fairbanks	203	25Q / R	12.0		175,970	2,380	0	93,487	271,837	0
25-3521	Engineering Assistant 2	FT	A	GP	Fairbanks	203	19G / J	12.0		84,464	3,439	12,861	59,252	160,016	0
25-3525	Engineering Assistant 2	FT	A	GG	Fairbanks	203	19M / N	12.0		96,213	3,921	14,742	64,890	179,766	0
25-3526	Engineering Assistant 2	FT	A	GP	Fairbanks	203	19B / C	12.0		72,951	2,963	10,896	53,678	140,488	0
25-3527	Engineering Assistant 2	FT	A	GP	Fairbanks	203	19J	12.0		87,068	3,550	13,395	60,550	164,563	0
25-3528	Engineering Assistant 2	FT	A	GP	Fairbanks	203	19G / J	12.0		84,030	3,424	12,861	59,073	159,388	0
25-3574	Engineer/Architect 1	FT	A	GP	Fairbanks	203	22J	12.0		106,802	3,774	0	63,172	173,748	0

Note: If a position is split, an asterisk (\*) will appear in the Split/Count column. If the split position is also counted in the component, two asterisks (\*\*) will appear in this column. [No valid job title] appearing in the Job Class Title indicates that the PCN has an invalid class code or invalid range for the class code effective date of this scenario.

**Personal Services Expenditure Detail**  
**Department of Transportation/Public Facilities**

**Scenario:** FY2024 Governor (19867)  
**Component:** Northern Region Design, Engineering, and Construction (3375)  
**RDU:** Design, Engineering and Construction (526)

PCN	Job Class Title	Time Status	Retire Code	Barg Unit	Location	Salary Sched	Range / Step	Comp Months	Split / Count	Annual Salaries	COLA	Premium Pay	Annual Benefits	Total Costs	UGF Amount
25-3593	Environmental Impact Analyst 3	FT	A	GP	Fairbanks	203	19L / M	12.0		95,072	3,991	17,850	65,703	182,616	0
25-3606	Engineer/Architect 3	FT	A	SS	Fairbanks	203	25K	12.0		138,715	1,961	0	79,045	219,721	0
25-3607	Engineer/Architect 2	FT	A	GP	Fairbanks	203	23J	12.0		114,543	4,048	0	66,374	184,965	0
25-3608	Engineer/Architect 1	FT	A	GP	Fairbanks	203	22F / G	12.0		102,260	3,614	0	61,293	167,167	0
25-3694	Right-Of-Way Agent 2	FT	A	GP	Fairbanks	203	16F / G	12.0		67,503	2,565	5,091	49,024	124,183	0
25-3730	Engineering Assistant 3	FT	A	GP	Fairbanks	203	21L / M	12.0		108,596	4,416	16,353	70,678	200,043	0
25-3731	Engineering Assistant 3	FT	A	GP	Fairbanks	203	21F / G	12.0		95,687	3,902	14,721	64,663	178,973	0
25-3732	Engineering Assistant 3	FT	A	GP	Fairbanks	203	21J	12.0		99,704	4,066	15,339	66,580	185,689	0
25-3733	Engineering Assistant 3	FT	A	GP	Nome	237	21A / B	12.0		107,894	4,400	16,599	70,489	199,382	0
25-IN1005	E/T Subjrnly 1	NP	N	LL	Fairbanks	2EE	59A	6.0		19,819	1,157	11,436	4,360	36,772	0
25-IN1006	E/T Subjrnly 1	NP	N	LL	Fairbanks	2EE	59A	6.0		19,819	1,157	11,436	4,360	36,772	0
25-IN1007	E/T Subjrnly 1	NP	N	LL	Fairbanks	2EE	59A	6.0		19,819	1,157	11,436	4,360	36,772	0
25-IN1008	E/T Subjrnly 1	NP	N	LL	Fairbanks	2EE	59A	6.0		19,819	1,157	11,436	4,360	36,772	0
25-IN1014	E/T Subjrnly 1	NP	N	LL	Fairbanks	2EE	59A	6.0		19,819	1,157	11,436	4,360	36,772	0
25-IN1202	College Intern 1	NP	N	EE	Fairbanks	N03	8A	9.0		25,623	0	6,570	4,491	36,684	0
25-IN1204	College Intern 4	NP	N	EE	Fairbanks	N03	12A	9.0		32,541	0	8,343	5,703	46,587	0
												<b>Total Salary Costs:</b>	22,160,619		
												<b>Total COLA:</b>	786,983		
												<b>Total Premium Pay:</b>	2,339,473		
												<b>Total Benefits:</b>	14,817,178		
												<b>Total Pre-Vacancy:</b>	40,104,253		
												<b>Minus Vacancy Adjustment of 4.95%:</b>	(1,984,953)		
												<b>Total Post-Vacancy:</b>	38,119,300		
												<b>Plus Lump Sum Premium Pay:</b>	0		
												<b>Personal Services Line 100:</b>	38,119,300		
<b>Total Component Months:</b>		2,981.0													

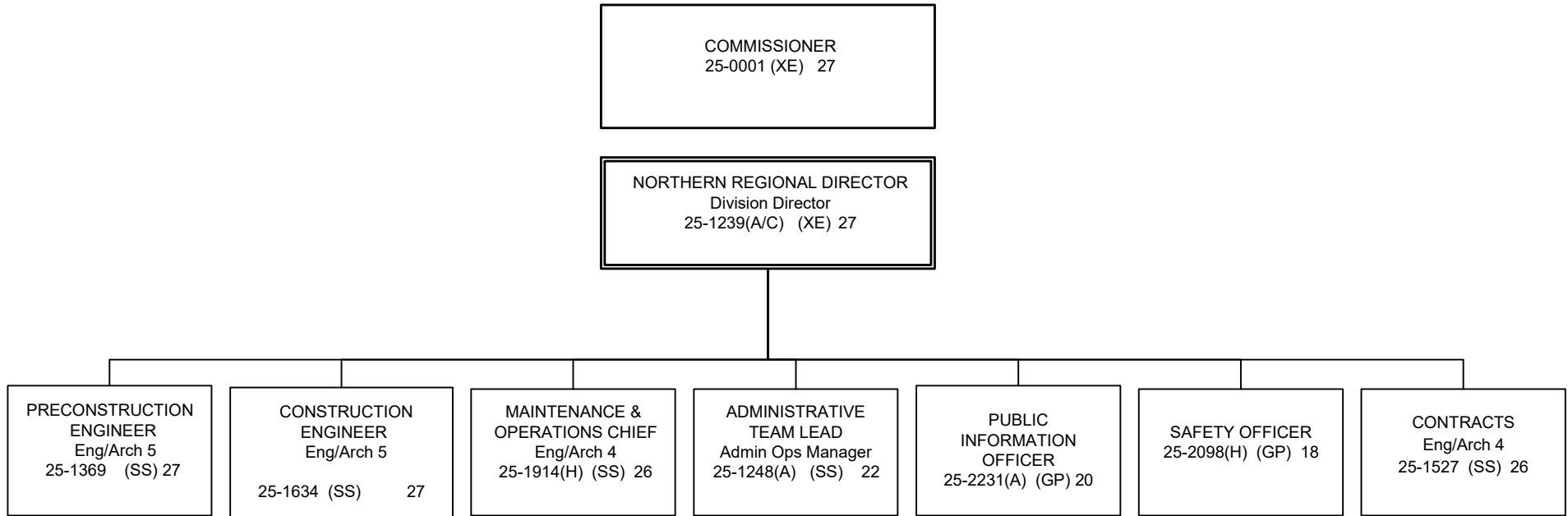
PCN Funding Sources:	Pre-Vacancy	Post-Vacancy	Percent
1004 General Fund Receipts	159,248	151,366	0.40%
1005 General Fund/Program Receipts	369,829	351,524	0.92%
1007 Interagency Receipts	167,924	159,613	0.42%
1039 U/A Indirect Cost Recovery	5,767,308	5,481,856	14.38%
1061 Capital Improvement Project Receipts	33,608,700	31,945,244	83.80%
1232 In-state Pipeline Fund Interagency	31,243	29,697	0.08%
<b>Total PCN Funding:</b>	<b>40,104,253</b>	<b>38,119,300</b>	<b>100.00%</b>

Note: If a position is split, an asterisk (\*) will appear in the Split/Count column. If the split position is also counted in the component, two asterisks (\*\*) will appear in this column. [No valid job title] appearing in the Job Class Title indicates that the PCN has an invalid class code or invalid range for the class code effective date of this scenario.

**Personal Services Expenditure Detail**  
**Department of Transportation/Public Facilities**

**Scenario:** FY2024 Governor (19867)  
**Component:** Northern Region Design, Engineering, and Construction (3375)  
**RDU:** Design, Engineering and Construction (526)

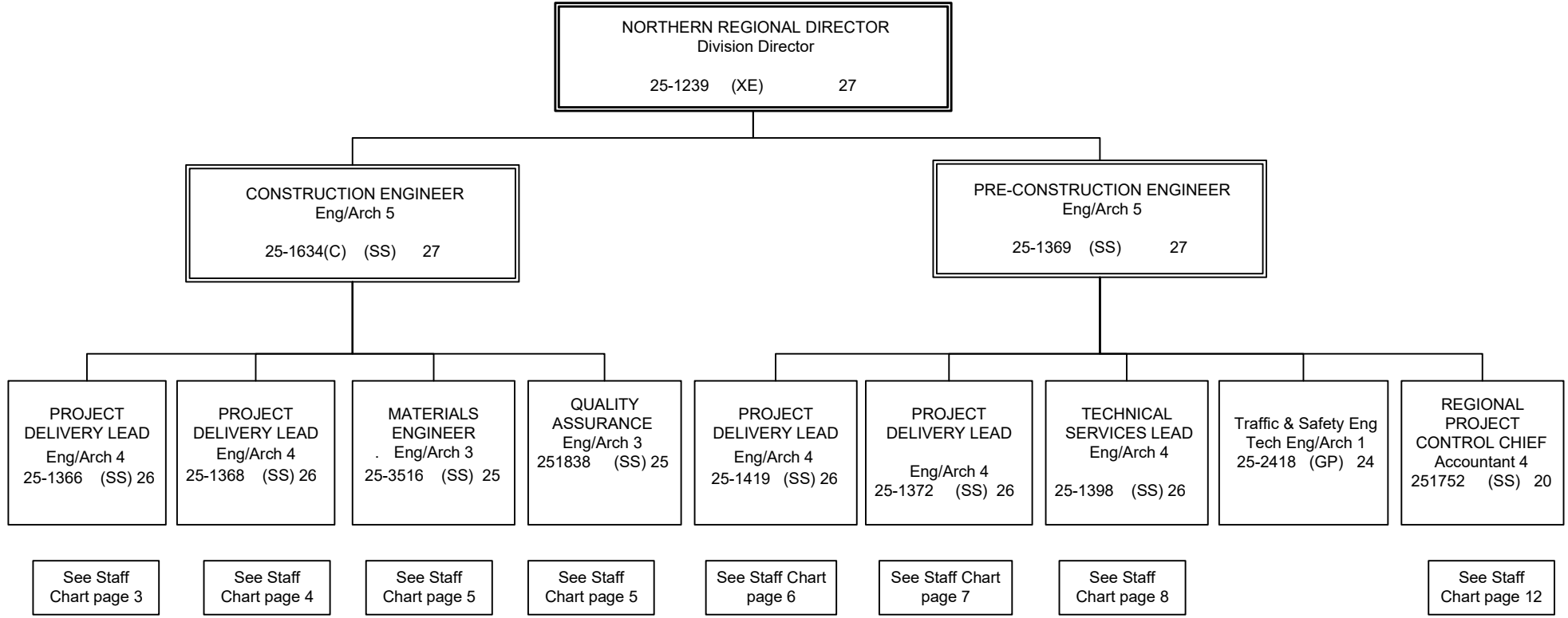
Note: If a position is split, an asterisk (\*) will appear in the Split/Count column. If the split position is also counted in the component, two asterisks (\*\*) will appear in this column.  
[No valid job title] appearing in the Job Class Title indicates that the PCN has an invalid class code or invalid range for the class code effective date of this scenario.



**Key:**

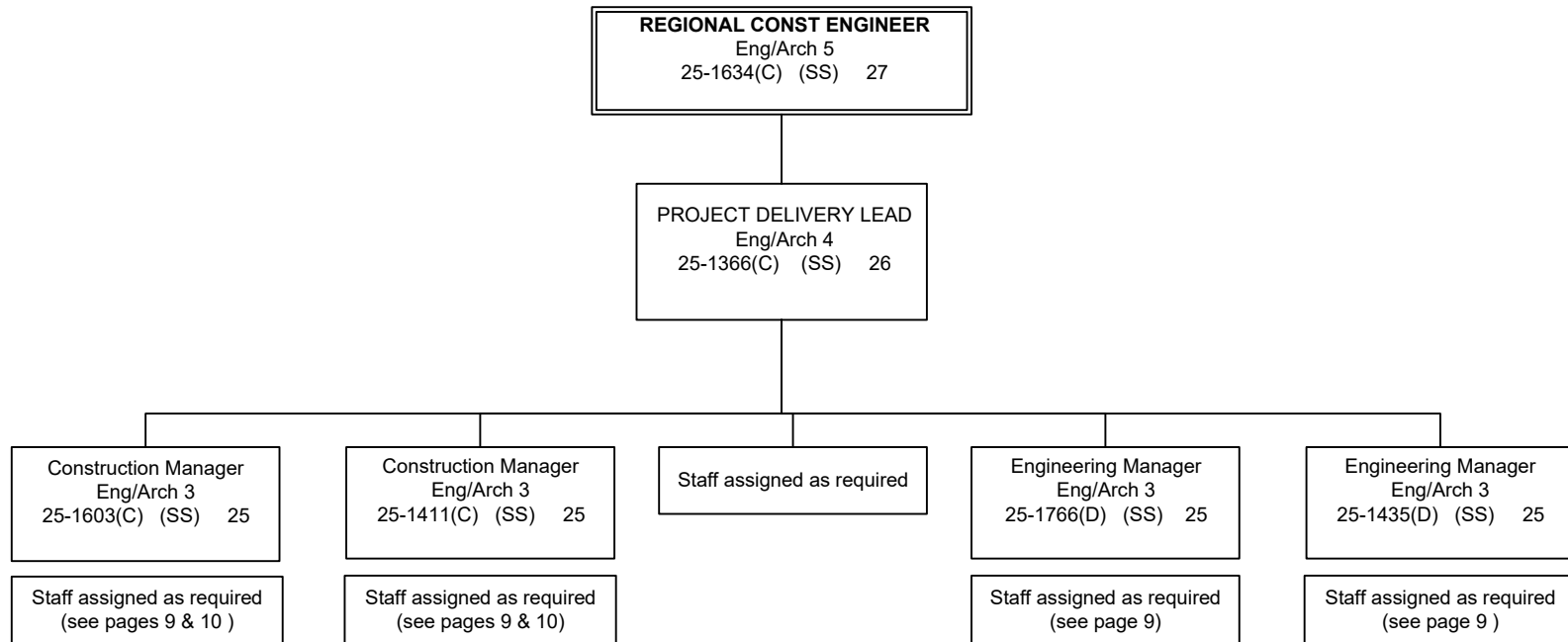
- (A) Admin Support Services Budget Component
- (H) Highway & Aviation Budget Component
- (S) Seasonal Position Type (SACL Budget Type)
- (GP) General Government Bargaining Unit
- (LL) Labor, Trades Bargaining Unit
- (SS) Supervisory Bargaining Unit
- (XE) Exempt Position
  
- J1 Journey 1
- J2 Journey 2
- J3 Journey 3
- SJ1 Sub-Journey 1
- SJ2 Sub-Journey 2

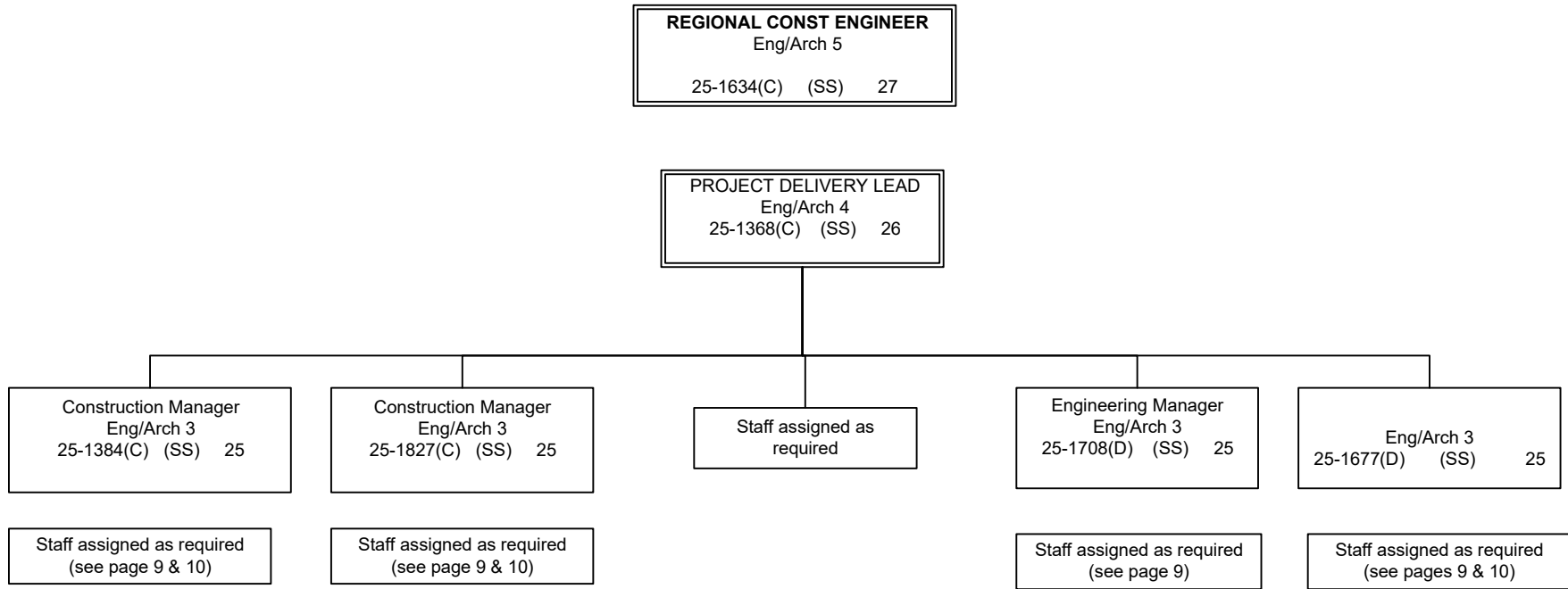
Fairbanks (JBA)

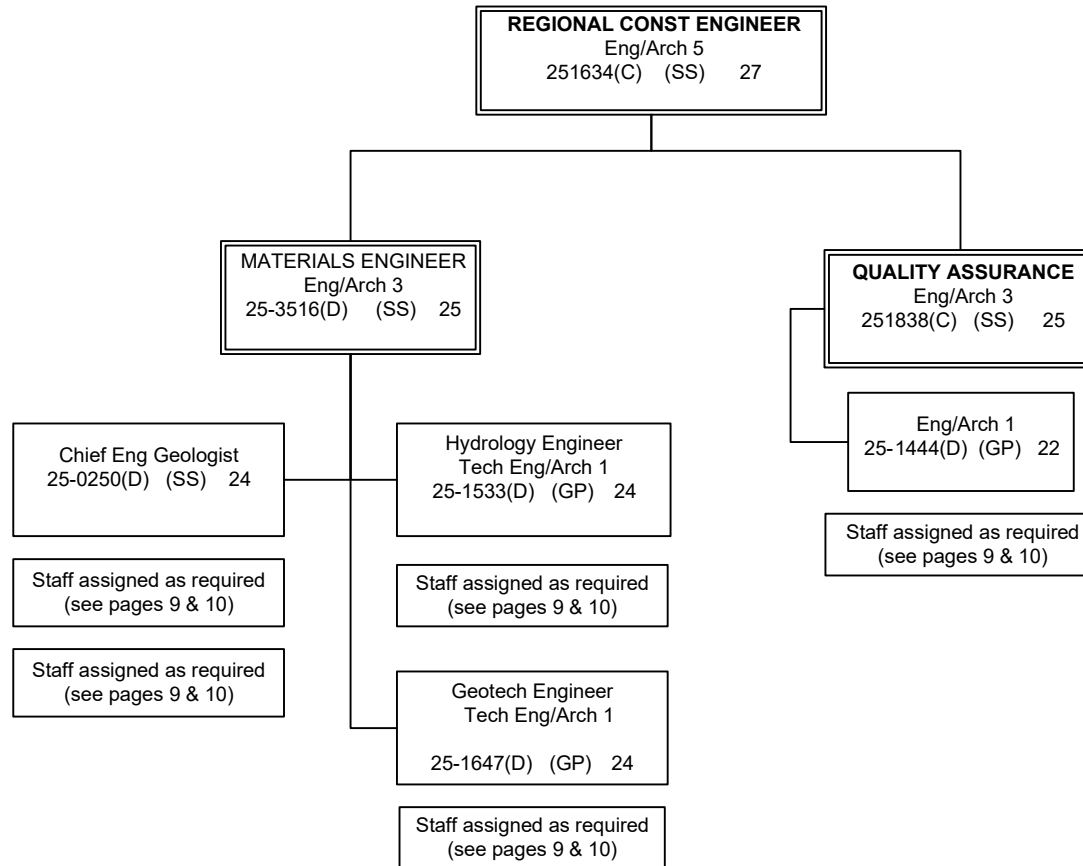


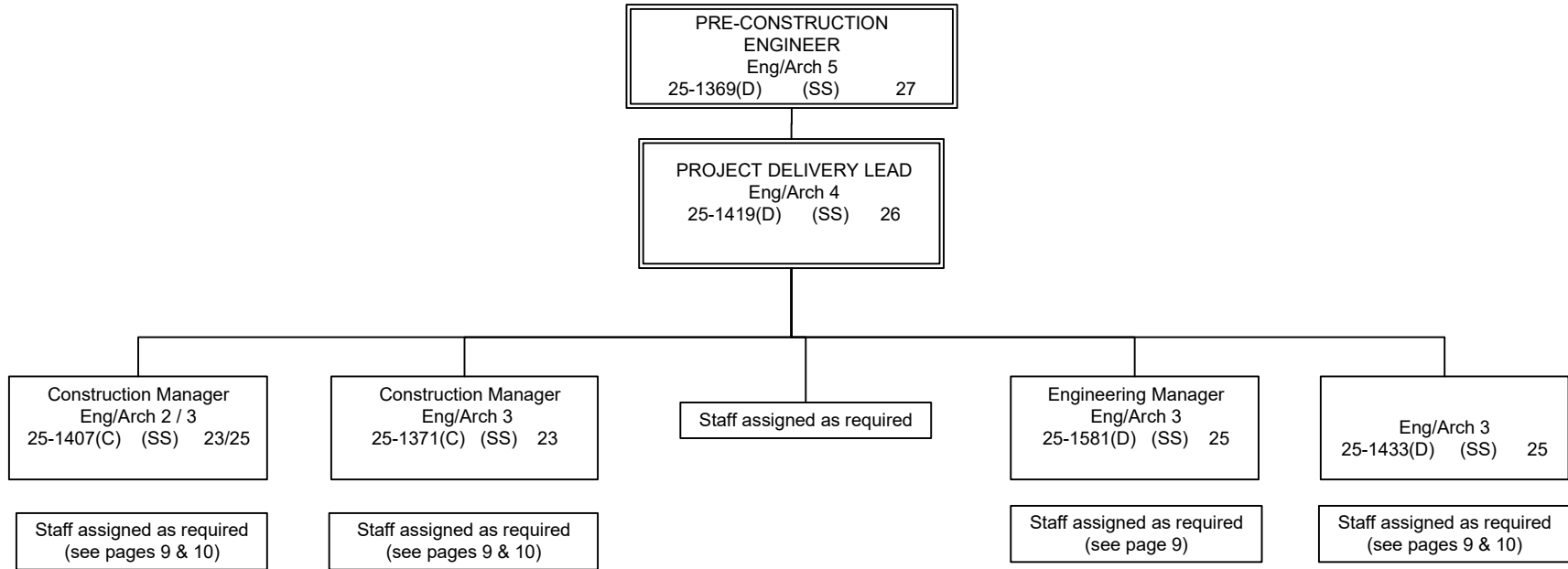
NORTHERN REGION DESIGN & CONSTRUCTION	
DESIGN FULL-TIME	112
DESIGN SEASONAL	13
DESIGN NON PERM	2
<b>DESIGN TOTAL</b>	<b>127</b>
CONSTRUCTION FULL-TIME	87
CONSTRUCTION SEASONAL	58
CONSTRUCTION NON PERM	5
<b>CONSTRUCTION TOTAL</b>	<b>150</b>
<b>TOTAL</b>	<b>277</b>

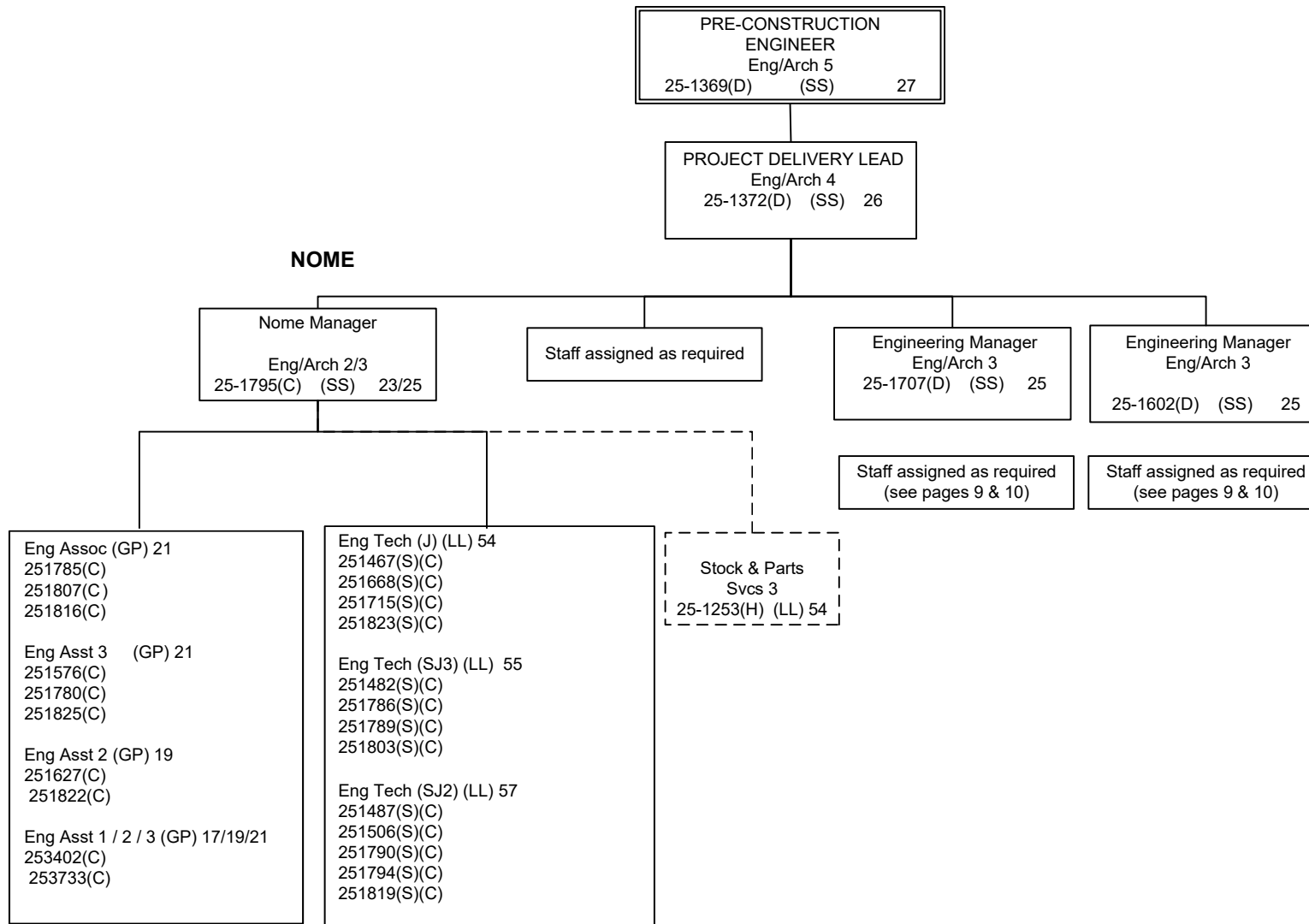


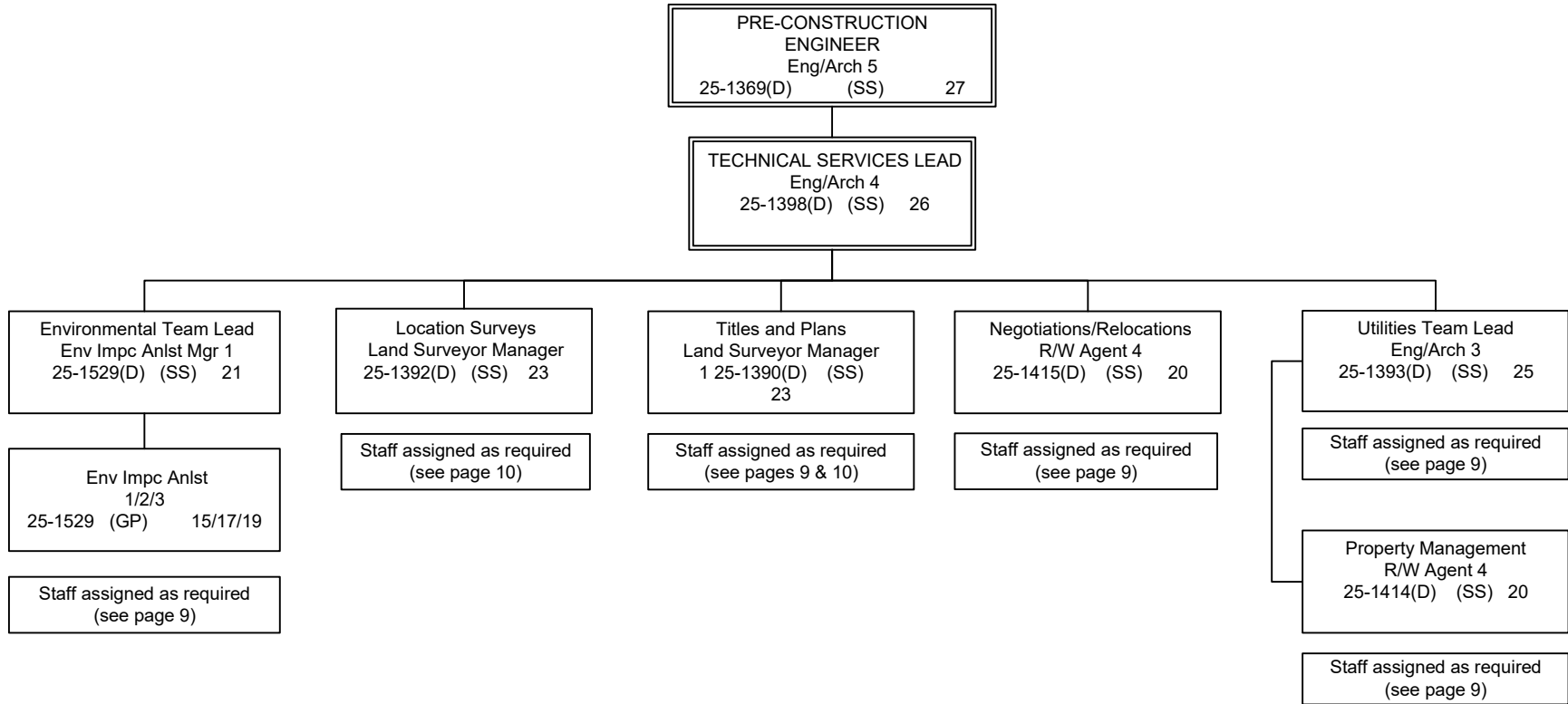












DESIGN & CONSTRUCTION ENGINEERING STAFF ASSIGNED AS REQUIRED (GG/GP)

Eng Asst 1 / 2 (GP) 17/19  
 251538(D)  
 251546(D)  
 251555(C)  
 251622(D)  
 251659(C)  
 251661(C)  
 251777(D)  
 251802(D)  
 25N22005

Eng Asst 1 / 2 / 3 (GP) 17/19/21  
 250202(D)  
 251683(D)

Eng Asst 2 (GP) 19  
 251443(C)  
 251449(C)  
 251457(C)  
 251459(C)  
 251473(C)  
 251541(C)  
 251542(D)  
 251548(C)  
 251557(C)  
 251579(C)  
 251580(C)  
 251582(C)  
 251625(C)  
 251637(C)  
 251660(C)  
 251704(D)  
 251761(C)  
 251812(C)  
 251843(C)  
 253405(C)  
 253521(C)  
 253525(C)  
 253526(C)  
 253527(C)  
 253528(C)

Eng Asst 2 / 3 (GP) 19/21  
 251441(D)  
 251712(D)

Eng Asst 3 (GP) 21  
 250165(D)  
 251394(D)  
 251406(D)  
 251409(D)  
 251412(C)  
 251421(D)  
 251436(C)  
 251439(D)  
 251447(C)  
 251455(C)  
 251530(D)  
 251534(C)  
 251578(C)  
 251599(D)  
 251607(D)  
 251611(D)  
 251632(C)  
 251639(C)  
 251658(C)  
 251656(C)  
 251657(C)  
 251742(C)  
 251765(C)  
 251781(C)  
 251782(C)  
 251784(C)  
 251796(C)  
 253730(C)  
 253731(C)  
 253732(C)  
 253449(D)  
 253450(D)  
 253453(D)  
 25N22002

Eng Associate (GP) 21  
 251387(C)  
 251405(C)  
 251573(C)  
 251609(C)  
 251705(C)  
 251797(C)  
 253401(C)

Eng Asst 3 / Eng Assoc / Eng/Arch 1 (GP) 21/21/22  
 251446(D)  
 251537(D)  
 251540(D)  
 251551(D)  
 251570(D)  
 251731(D)  
 253574(D)  
 253608(D)

Eng Arch 1 (GP) 22  
 251382(D)  
 251396(D)  
 251432(D)  
 251434(C)  
 251437(D)  
 251531(D)  
 253452(D)  
 253607(D)

Eng Arch 2/3 (GP) 23/25  
 251389(D)

Drafting Tech 3 (GP) 15  
 251770(D)  
 251832(D)  
 251558(D)

Env Impact Analysts 1 / 2 / 3 (GP) 15/17/19  
 251532(D)  
 251545(D)  
 251556(D)  
 251604(D)  
 251771(D)  
 251850(D)

Env Imp Analysts 2 / 3 (GP) 17/19  
 252410(D)

Env Impact Analysts 3 (GP) 19  
 251536(D)  
 253593(D)

Land Surveyor 1 (GP) 21  
 251740(D)

Land Surveyor 1/2 (GP) 21/22  
 251571(D)  
 251768 (D)

College Intern 1/2/3/4 (EE)8/9/10/12  
 25IN1202(D)  
 25IN1204(D)  
 25IN1114

ROW Asst / ROW Agent 1/2 (GP) 12/14/16  
 251425(D)

ROW Agent 1 (GP) 14  
 253694(D)

ROW Agent 2 (GP) 16  
 251400(D)  
 251423(D)

ROW Agent 3 (GP) 18  
 251388(D)  
 251391(D)  
 251399(D)  
 251416(D)  
 251460(D)  
 251544(D)  
 251572(D)  
 251729(D)

Eng Geologist 1 / 2 (GP) 16/18  
 251624(D)  
 251635(D)

Eng Geologist 2 (GP) 18  
 250732(D)  
 251636(D)

DESIGN & CONSTRUCTION ENGINEERING STAFF ASSIGNED AS REQUIRED (LTC)

Eng Technician (J) (LL) 54  
251643(S)(D)  
251648(S)(D)  
251464(S)(C)  
251465(S)(C)  
251468(S)(C)  
251469(S)(C)  
251474(S)(C)  
251479(S)(C)  
251490(S)(C)  
251524(S)(C)  
251667(S)(C)  
251748(S)(C)  
251758(S)(C)  
251852(S)(C)  
251862(S)(C)

Maint Gen (J) (LL) 54  
251494(C)

Eng Technician (SJ3) (LL) 55  
251480(S)(C)  
251484(S)(C)  
251485(S)(C)  
251486(S)(C)  
251492(S)(C)  
251615(S)(C)  
251678(S)(C)  
251762(S)(C)  
251776(S)(D)  
251854(S)(C)  
251857(S)(C)  
251875(S)(C)  
251876(S)(C)

Eng Technician (SJ2) (LL) 57  
251502(S)(C)  
251507(S)(C)  
251508(S)(C)  
251511(S)(C)  
251518(S)(C)  
251519(S)(C)  
251525(S)(C)  
251566(S)(C)  
251569(S)(C)  
251596(S)(C)  
251684(S)(C)  
251688(S)(C)  
251689(S)(C)  
251693(S)(C)  
251700(S)(C)  
251701(S)(C)  
251710(S)(C)  
251745(S)(C)  
251787(S)(C)  
251880(S)(C)

Eng Tech (LL) 59/57  
Interns  
25IN1005(C)  
25IN1006(C)  
25IN1007(C)  
25IN1008(C)  
25IN1014(C)

Survey – Lead (LL) 53  
25161(S)(D)  
251871(S)(D)  
251565(S)(D)

Survey – J (LL) 54  
251500(S)(D)

Survey – SJ (LL) 56  
251682(S)(D)  
251694(S)(D)

Driller – Journey (LL) 53  
250723(D)  
251642(D)  
251645(D)  
251775(S)(D)

Driller – SJ (LL) 54  
250247(D)  
251491(S)(D)  
251644(S)(D)



