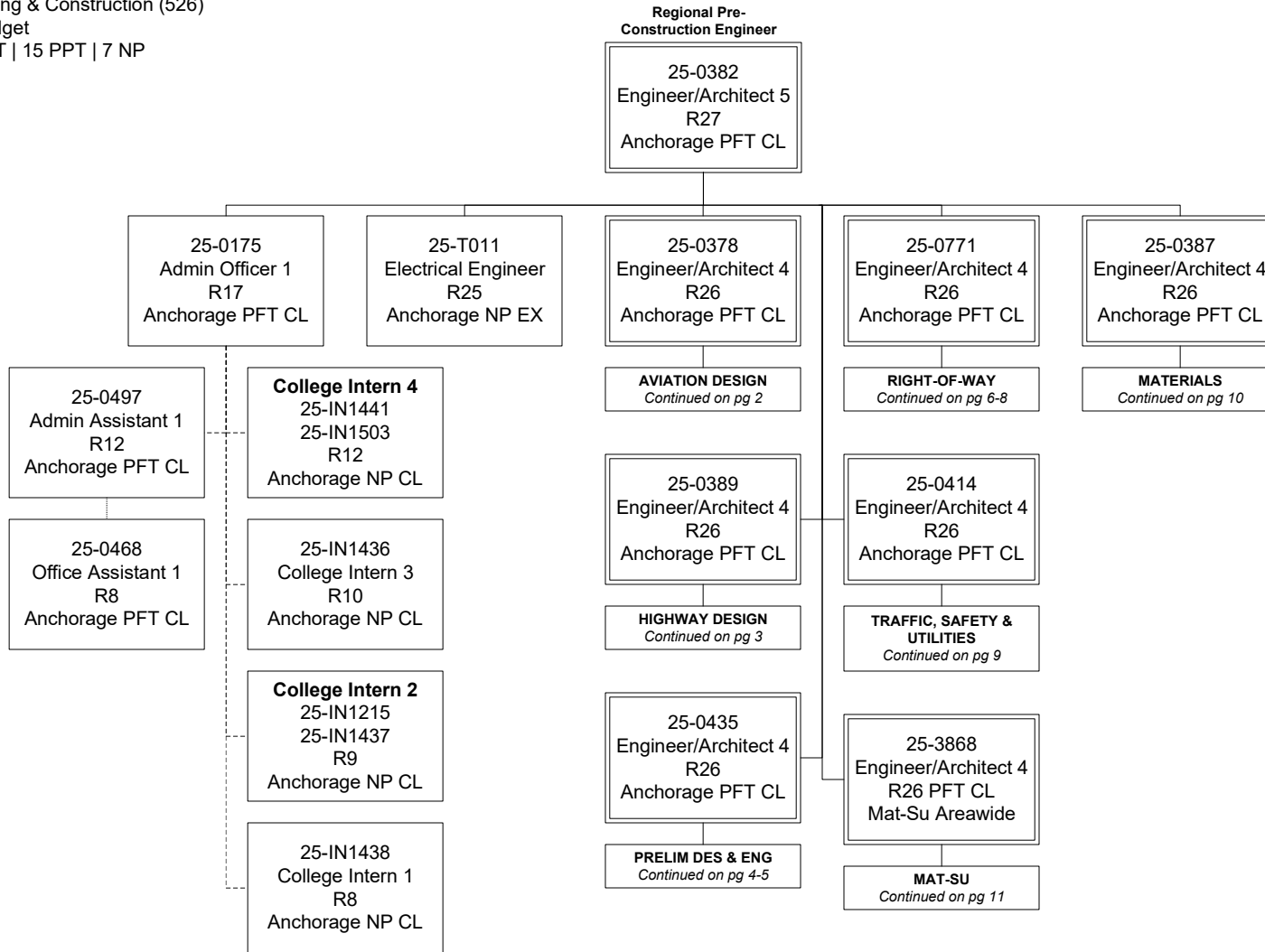


Department of Transportation & Public Facilities

Central Design & Engineering Services (2298)
RDU: Design, Engineering & Construction (526)
FY2024 Governor's Budget
Position Totals: 165 PFT | 15 PPT | 7 NP

Regional Office



Department of Transportation & Public Facilities

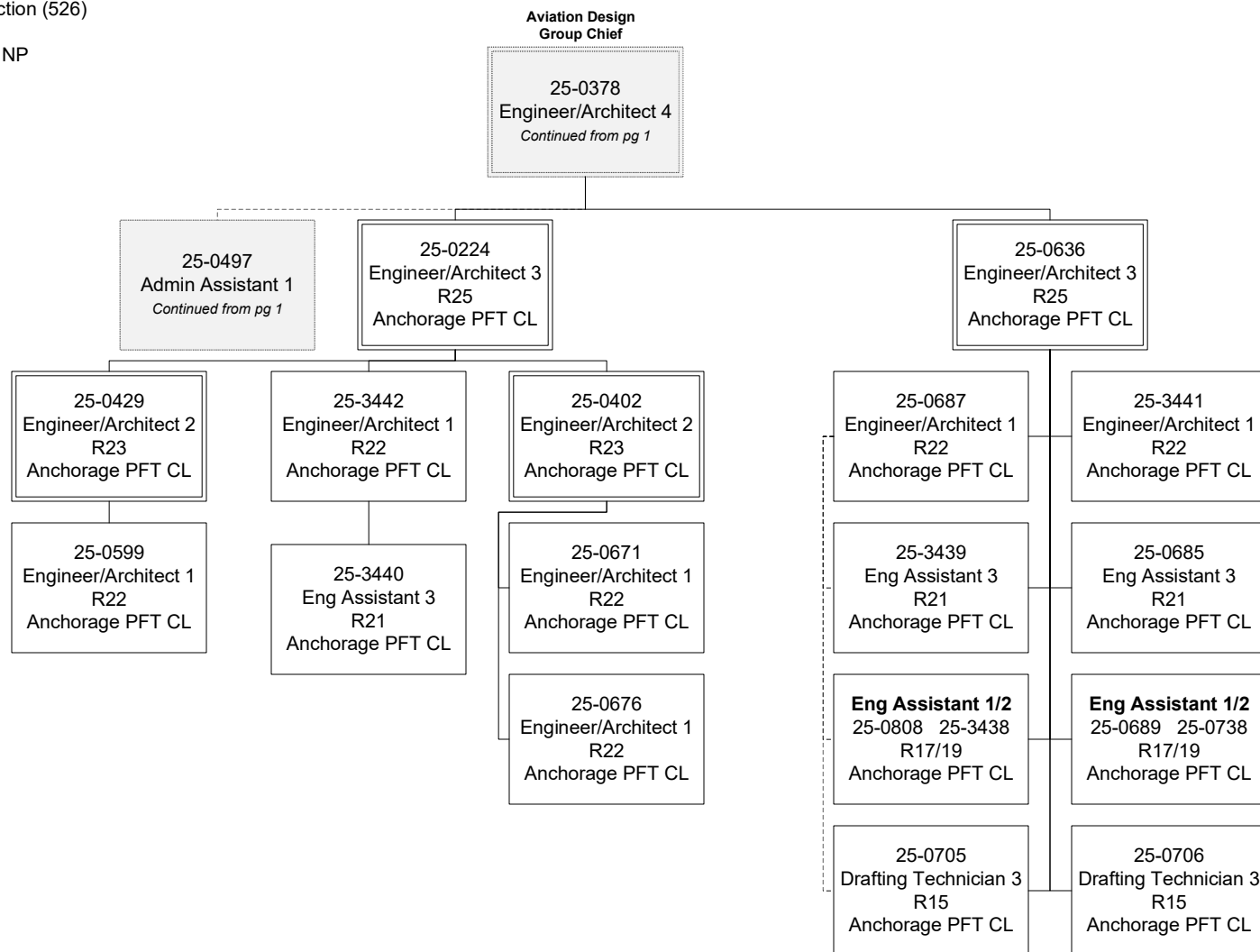
Central Design & Engineering Services (2298)

RDU: Design, Engineering & Construction (526)

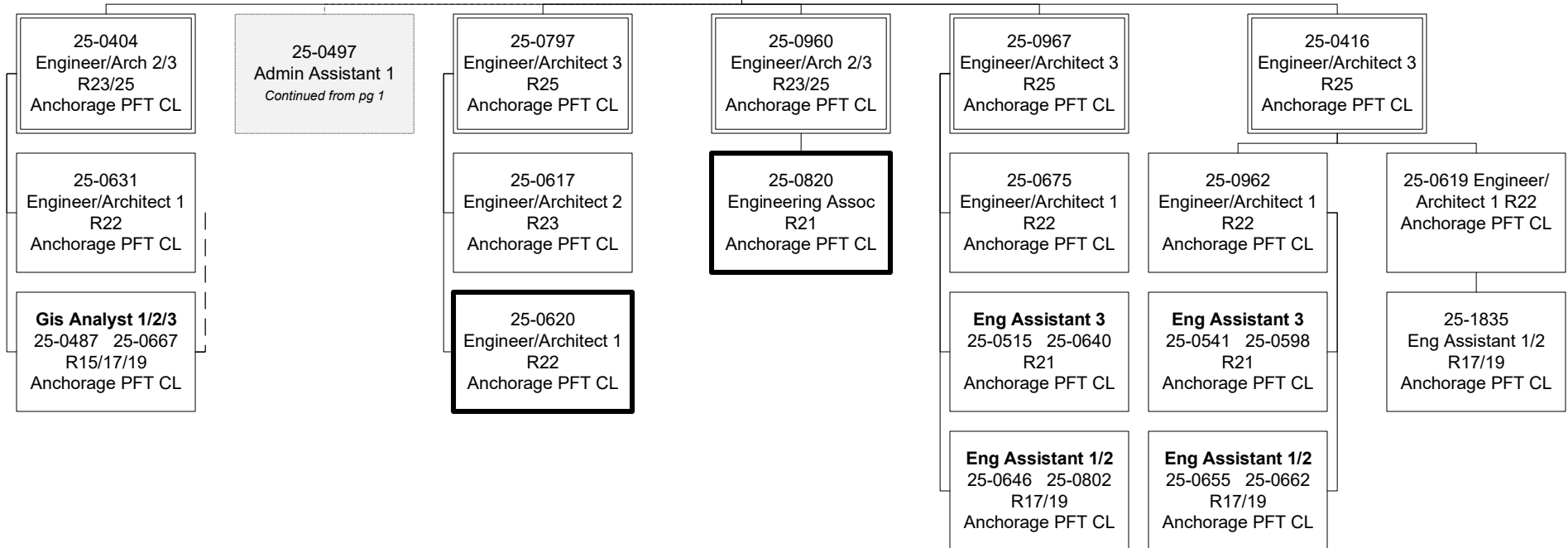
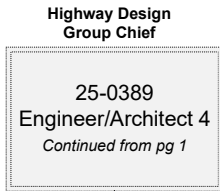
FY2024 Governor's Budget

Position Totals: 165 PFT | 15 PPT | 7 NP

Aviation Design



Highway Design



Eng Assistant 3/Eng Associate/Eng Arch 1 (R21/22)
flexibly staffed position

Department of Transportation & Public Facilities

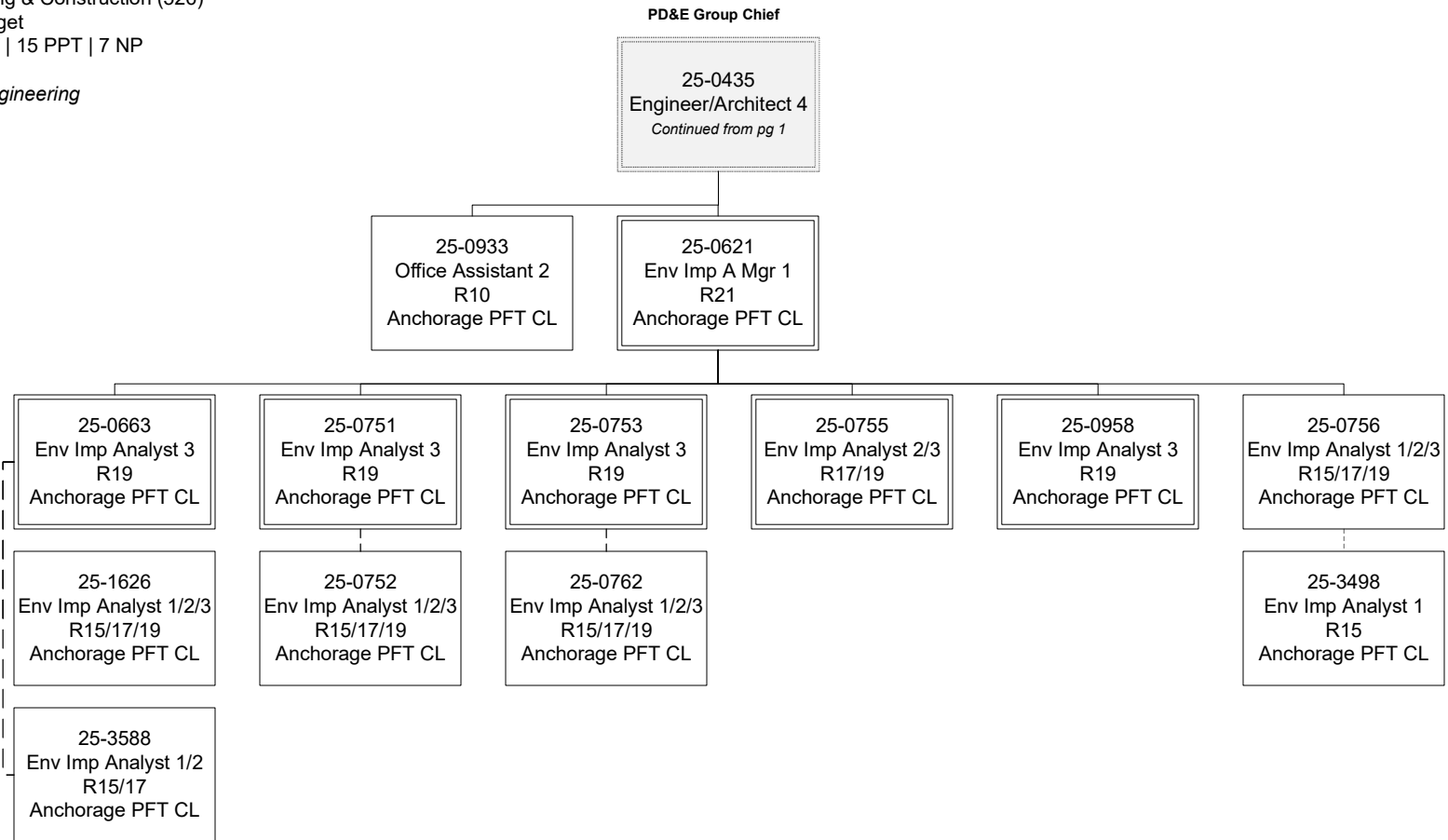
Central Design & Engineering Services (2298)

RDU: Design, Engineering & Construction (526)

FY2024 Governor's Budget

Position Totals: 165 PFT | 15 PPT | 7 NP

Preliminary Design & Engineering



Department of Transportation & Public Facilities

Central Design & Engineering Services (2298)

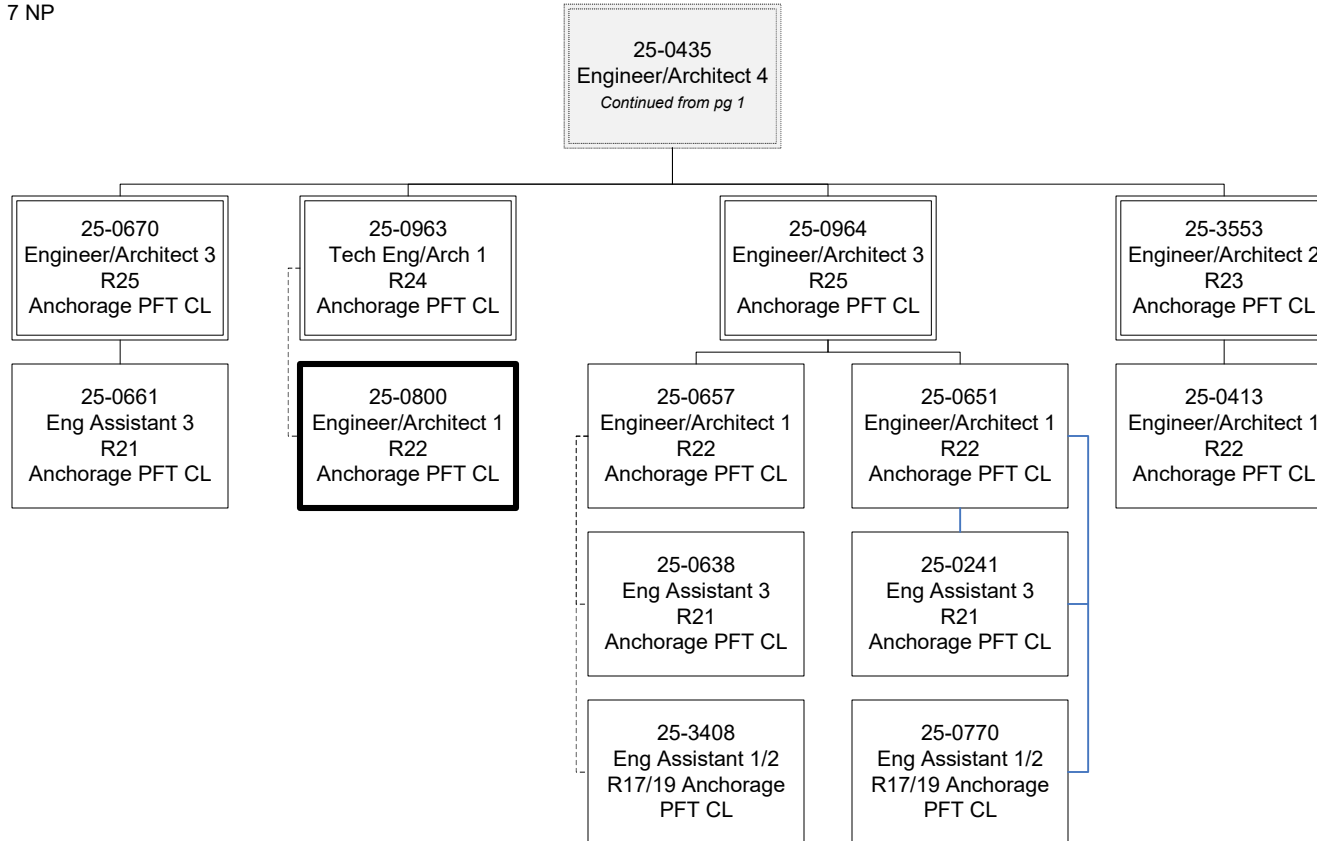
RDU: Design, Engineering & Construction (526)

FY2024 Governor's Budget

Position Totals: 165 PFT | 15 PPT | 7 NP

Preliminary Design & Engineering

PD&E Group Chief



Eng Assistant 3/Eng Associate/Eng Arch 1 (R21/22)
flexibly staffed position

Department of Transportation & Public Facilities

Central Design & Engineering Services (2298)

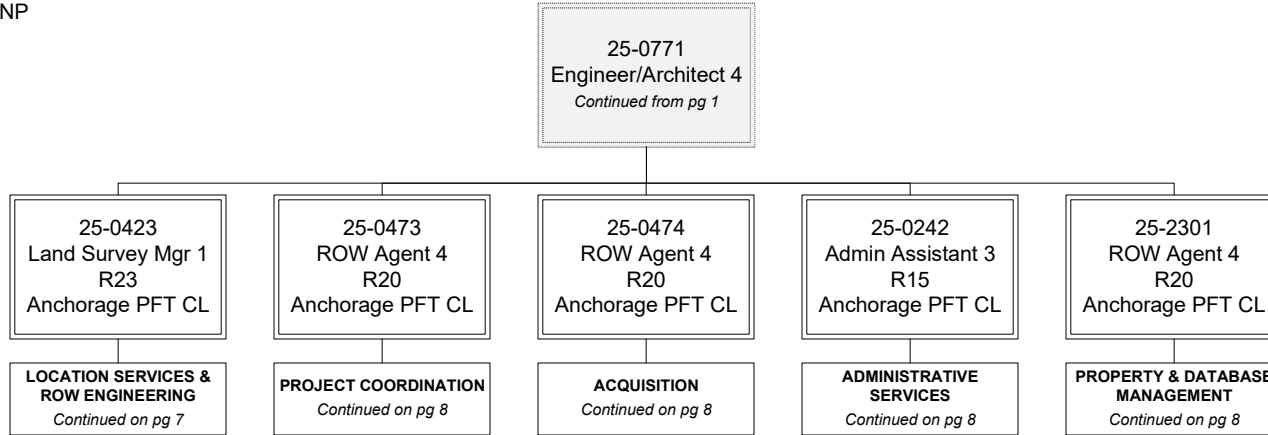
RDU: Design, Engineering & Construction (526)

FY2024 Governor's Budget

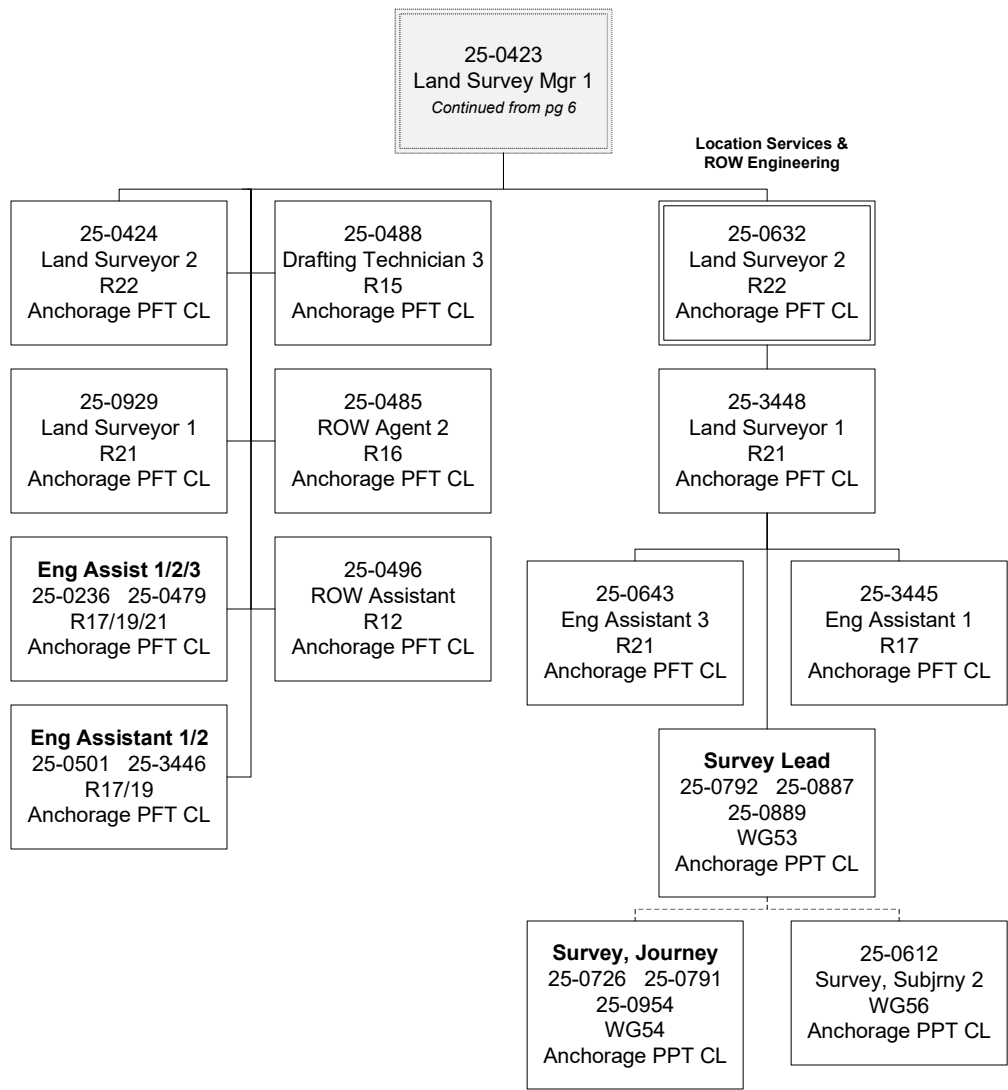
Position Totals: 165 PFT | 15 PPT | 7 NP

Right-of-Way

Right-of-Way Group Chief



Right-of-Way



Department of Transportation & Public Facilities

Central Design & Engineering Services (2298)

RDU: Design, Engineering & Construction (526)

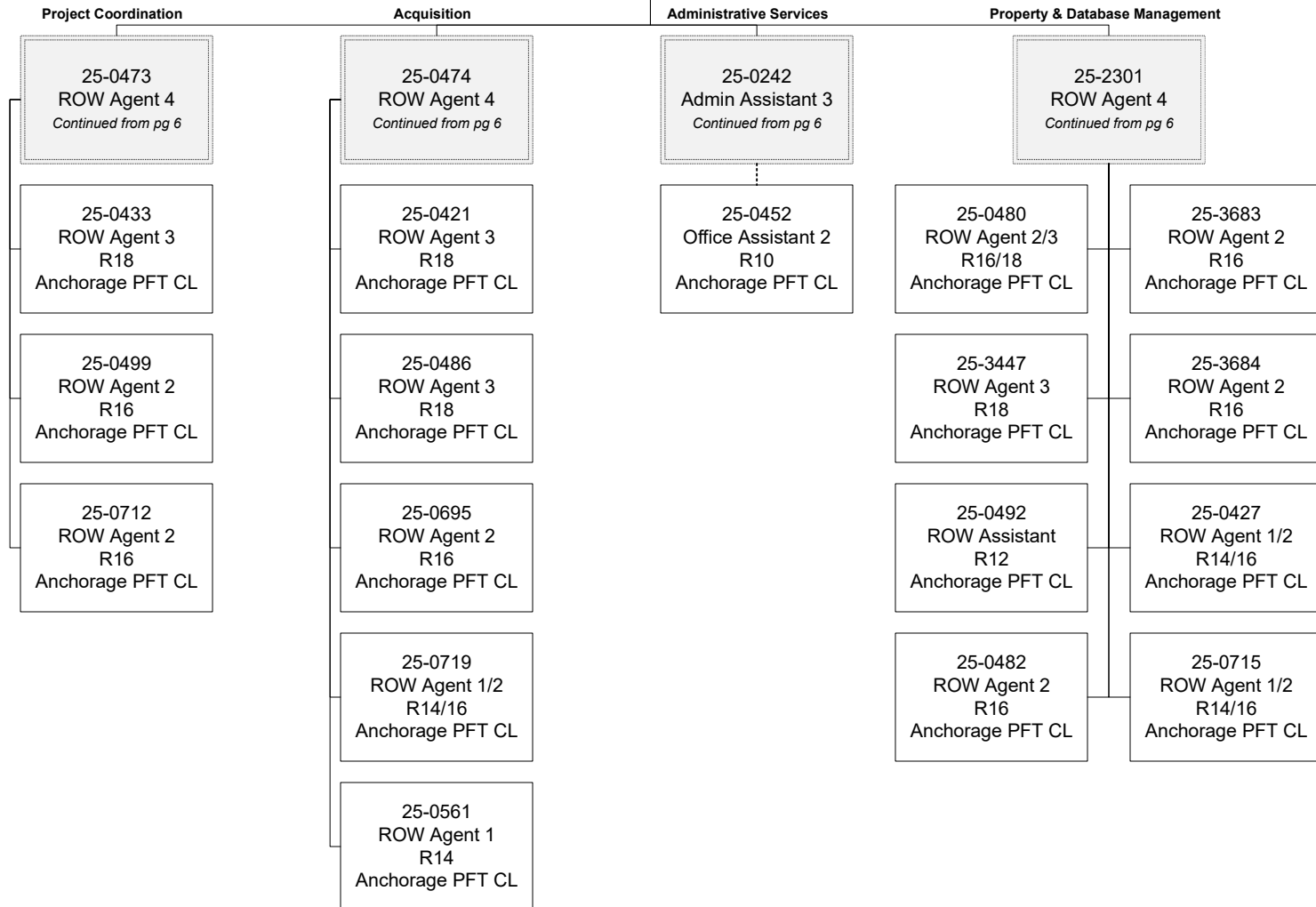
FY2024 Governor's Budget

Position Totals: 165 PFT | 15 PPT | 7 NP

Right-of-Way

Right-of-Way Group Chief

25-0771
Engineer/Architect 4
Continued from pg 1



Department of Transportation & Public Facilities

Central Design & Engineering Services (2298)

RDU: Design, Engineering & Construction (526)

FY2024 Governor's Budget

Position Totals: 165 PFT | 15 PPT | 7 NP

Traffic, Safety, and Utilities

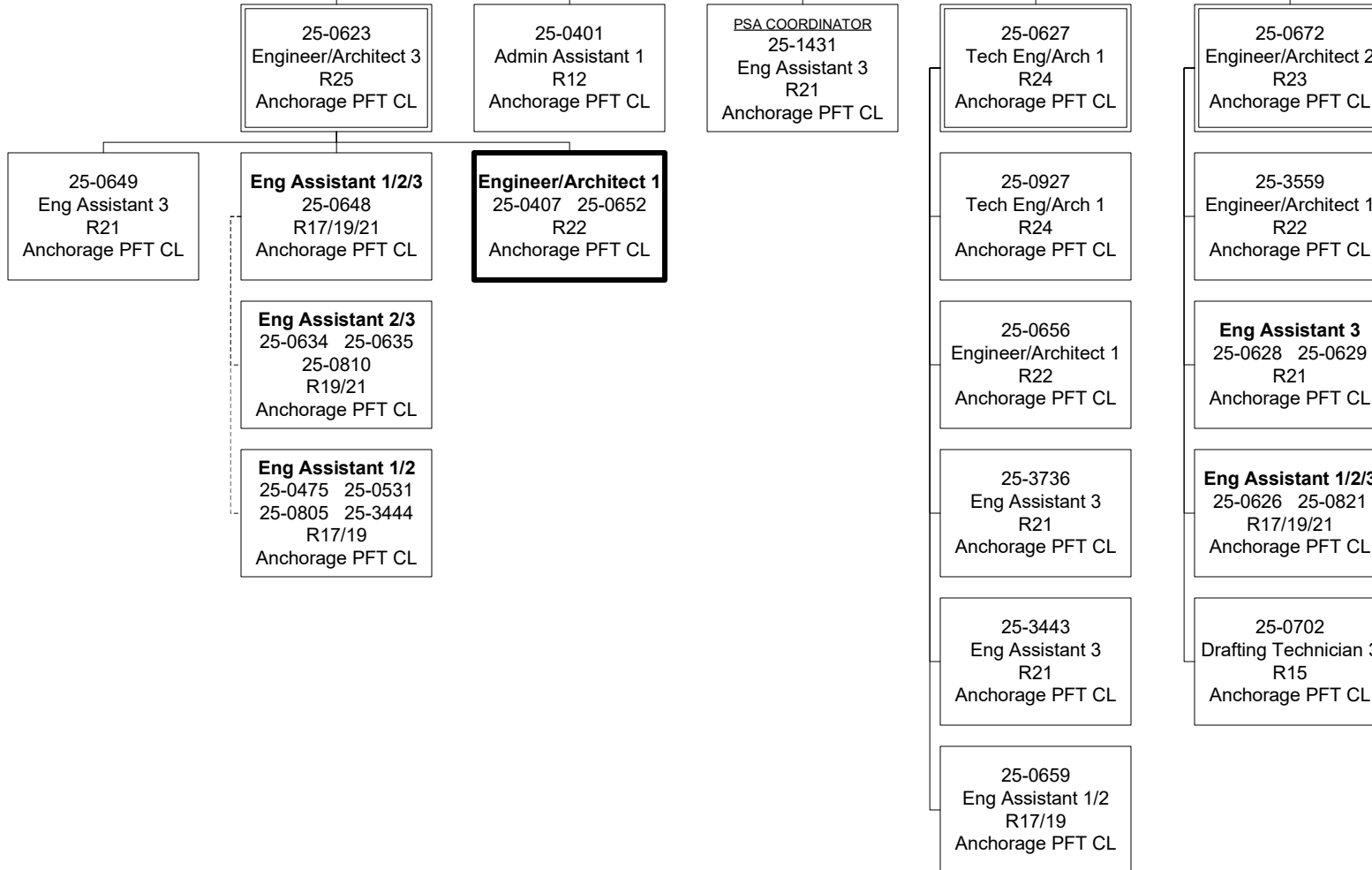
TSU Group Chief

25-0414
Engineer/Architect 4
Continued from pg 1

Utility Permitting/Utility
Accommodation & Relocation

Traffic Safety

Traffic Design



Eng Assistant 3/Eng Associate/Eng Arch 1 (R21/22)
flexibly staffed position

Department of Transportation & Public Facilities

Central Design & Engineering Services (2298)

RDU: Design, Engineering & Construction (526)

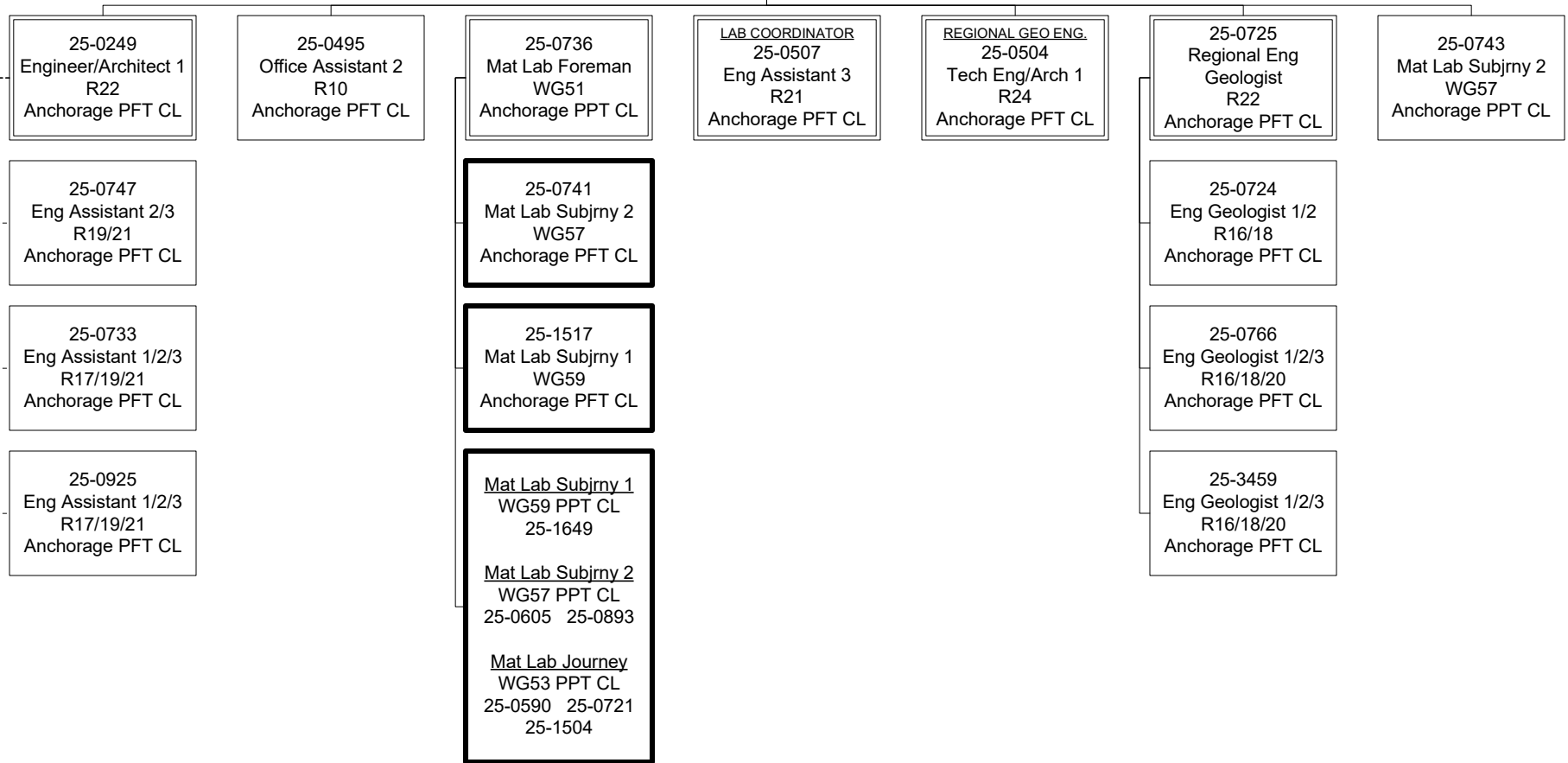
FY2024 Governor's Budget

Position Totals: 165 PFT | 15 PPT | 7 NP

Materials

Materials Group Chief

25-0387
Engineer/Architect 4
Continued from pg 1



Mat Lab Technician – Sub Journey 1/2/3/4/Journey
(WG53/54/56/57/59) flexibly staffed position

Department of Transportation & Public Facilities

Central Design & Engineering Services (2298)

RDU: Design, Engineering & Construction (526)

FY2024 Governor's Budget

Position Totals: 165 PFT | 15 PPT | 7 NP

Mat-Su

Mat-Su Group Chief

