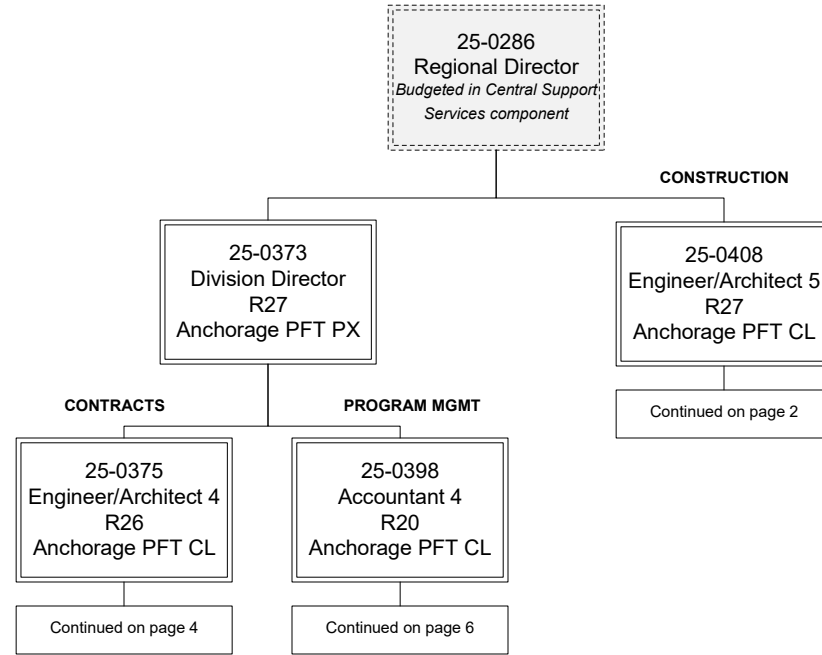
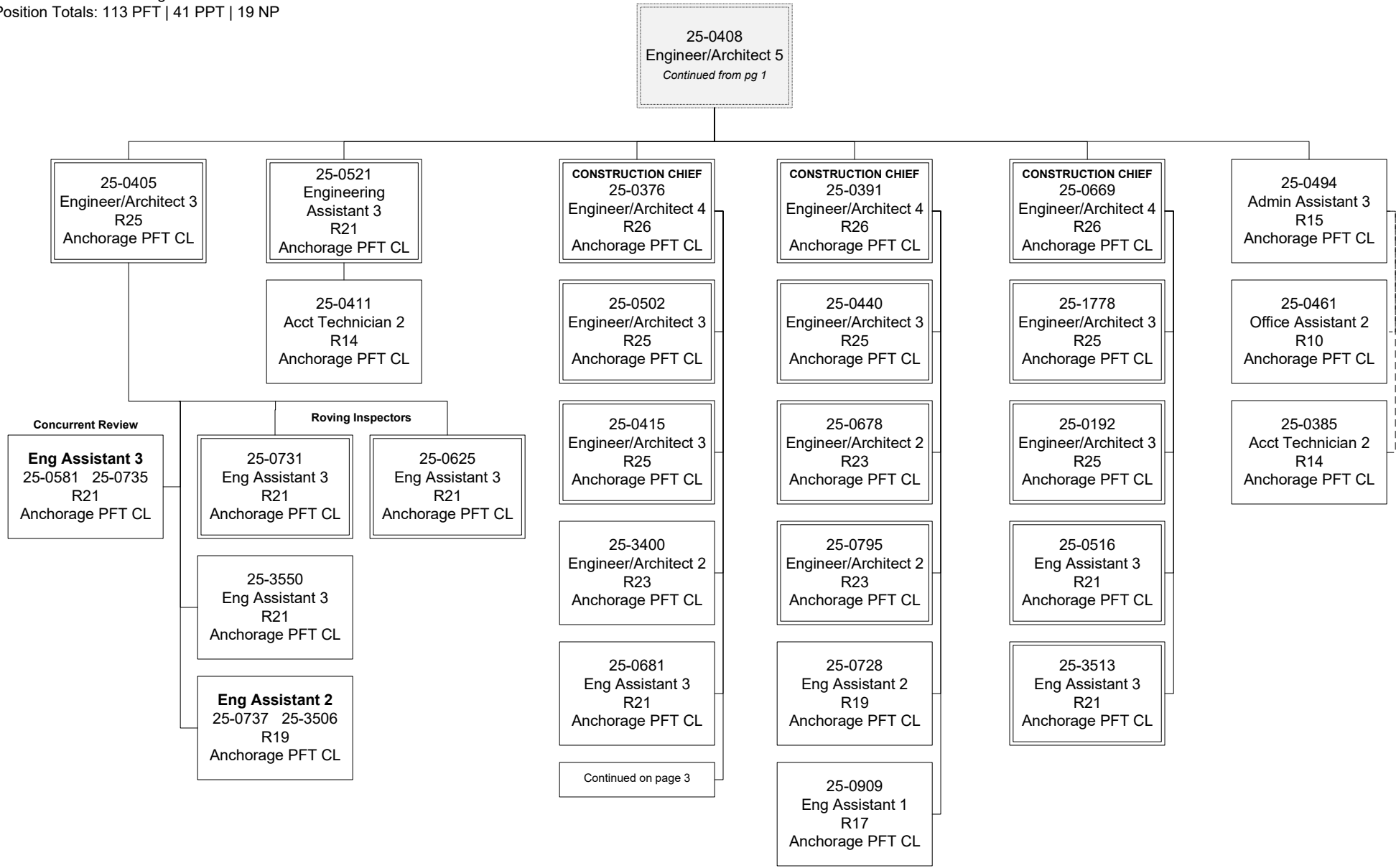


Department of Transportation & Public Facilities
Central Region Construction and CIP Support (2293)
RDU: Design, Engineering and Construction (526)
FY2024 Governor's Budget
Position Totals: 113 PFT | 41 PPT | 19 NP





25-0376
 Engineer/Architect 4
Continued from pg 2

Eng Associate
 25-0506 25-0509
 25-0514 25-0518
 25-0758
 R21
 Anchorage PFT CL

25-0654
 Eng Assistant 2
 R19
 Anchorage PFT CL

Eng Assistant 3
 25-0446 25-0688
 25-0465 25-0694
 25-0508 25-0759
 25-0510 25-0799
 25-0512 25-3399
 25-0579 25-3514
 25-0633 25-3515
 25-0674
 R21
 Anchorage PFT CL

Eng Assistant 1/2
 25-0403 25-0684
 25-0513 25-0693
 25-0516 25-0696
 25-0517 25-0701
 25-0519 25-0760
 25-0520 25-0767
 25-0522 25-0804
 25-0523 25-0807
 25-0524 25-0809
 25-0525 25-0811
 25-0526 25-0814
 25-0527 25-0815
 25-0528 25-0822
 25-0532 25-3403
 25-0533 25-3404
 25-0534 25-3503
 25-0535 25-3504
 25-0536 25-3505
 25-0641 25-3507
 25-0642 25-3508
 25-0650 25-3509
 25-0653
 R17/19 Anchorage
 PFT CL

Eng Tech Jrny
 WG54 PPT CL

Anchorage
 25-0539 25-0540
 25-0542 25-0552
 25-0554 25-0555
 25-0559 25-0560
 25-0563 25-0564
 25-0828 25-0832
 25-0833

Soldotna
 25-0553

Wasilla
 25-0829

E/T Subjrny 3
 WG55 PPT CL

Anchorage
 25-0562 25-0570
 25-0571 25-0574
 25-0577 25-0604
 25-0606 25-0896

Wasilla
 25-0572
 25-0836

E/T Subjrny 2
 WG57 PPT CL

Anchorage
 25-0547 25-0548
 25-0586 25-0587
 25-0587 25-0591
 25-0592 25-0593
 25-0595 25-0601
 25-0870 25-0875
 25-0877 25-0907
 25-0956 25-0957

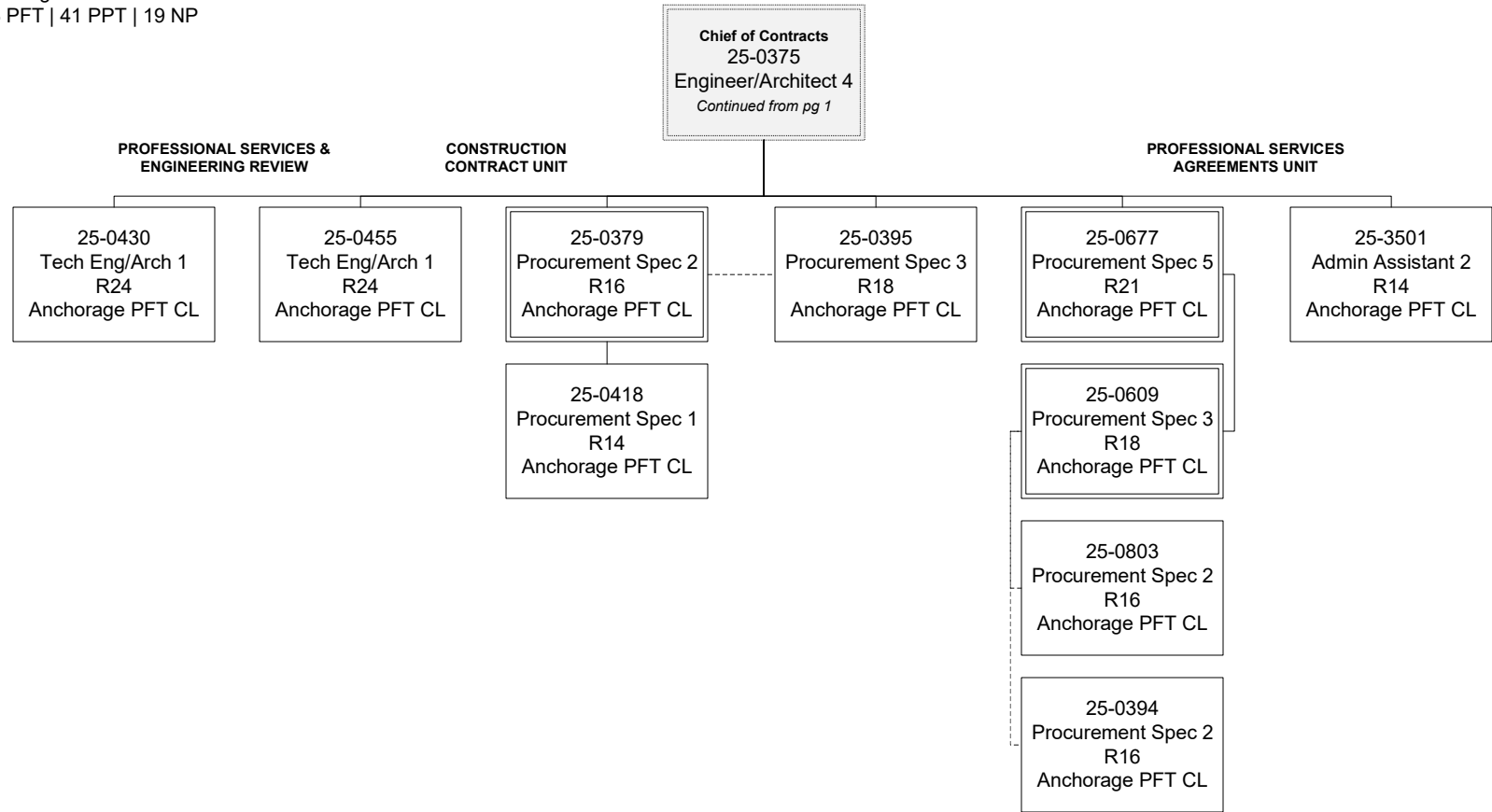
Wasilla
 25-0594 25-0595

E/T Subjrny 1/2
 25-IN0916
 25-IN0917
 25-IN0918
 25-IN0919
 25-IN0920
 25-IN0921
 25-IN0922
 25-IN0923
 25-IN0924
 25-IN0925
 WG57/59
 Anchorage NP CL

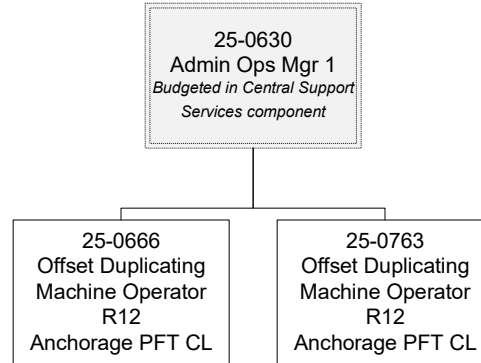
E/T Subjrny 1
 WG59 NP CL

Wasilla
 25-N09022
 25-N09024
 25-N09091

Anchorage
 25-N09023
 25-N09085
 25-N09087
 25-N09088
 25-N09089
 25-N09090



Department of Transportation & Public Facilities
Central Region Construction and CIP Support (2293)
RDU: Design, Engineering and Construction (526)
FY2024 Governor's Budget
Position Totals: 113 PFT | 41 PPT | 19 NP



Department of Transportation & Public Facilities
Central Region Construction and CIP Support (2293)
RDU: Design, Engineering and Construction (526)
FY2024 Governor's Budget
Position Totals: 113 PFT | 41 PPT | 19 NP

