

State of Alaska
FY2024 Governor's Operating Budget

Department of Transportation/Public Facilities
Facilities Services
Component Budget Summary

Component: Facilities Services**Contribution to Department's Mission**

Division of Facilities Services efficiently delivers, improves, and maintains safe and reliable facilities across Alaska.

Core Services

- Provide routine and preventative maintenance of state-owned buildings that are included in the Division of Facilities Services (DFS) portfolio.
- Through use of in-house and contracted resources, maintain all building components and systems, including electrical, plumbing, heating, ventilating and air conditioning systems, fire protection and suppression systems, doors, windows, roofs, elevators, and interior and exterior finishes.
- Conduct non-routine maintenance of buildings when required.
- Conduct deferred maintenance planning and repairs.
- Furnish basic services and utilities, such as electrical power, heating fuel, water and sewer, trash disposal, janitorial, grounds maintenance, snow removal and operation of building systems in support of tenant agency programs.
- Provide or procure contracts for facilities services including, but not limited to, janitorial, snow removal, lawn maintenance, window washing, building security, waste removal, and elevator maintenance.
- Provide project management and engineering oversight for all vertical construction capital projects through Statewide Public Facilities, including deferred maintenance, federal, state airport, and energy efficiency programs.
- Using both state-forces and contracted services design, bid, and administer the construction of facility system renewals, tenant improvements, and new facilities operated and maintained by both the Department of Transportation and Public Facilities (DOT&PF) and other state or local agencies.
- Perform or procure contracts for construction, major maintenance, remodeling, or repairs requested by building occupants or required to meet building codes and regulations.
- Collaboration with executive branch departments to educate, guide, and operationalize best practices of facilities maintenance, including DOT&PF executed and delegated facilities construction projects.
- Support to executive branch departments on facilities, CMMS implementation, tenant improvement, leasing, and space management topics.
- Management of the Public Building Fund in collaboration with Statewide Administrative Services accounting staff.
- Procurement, negotiation, execution, and management of leases for tenant agencies across the entire Executive Branch.

Major Component Accomplishments in 2022

- Executed Service Level Agreements internally with DOT&PF, and externally with the following departments: Education and Early Development, Health, Public Safety, Labor and Workforce Development, Natural Resources, and Alaska Courts.
- Continued onboarding of further departments, buildings, and functions for Service Level Agreement participation based on willing participation.
- Major portions of the statewide enterprise CMMS have been implemented, with maintenance work orders live as of July 2020.
- Continued development of division-level policies and procedures.
- Successfully transitioned five components to include the Public Building Fund and Leasing group from the Department of Administration to Division of Facilities Services.
- Completed construction of the Barrow Combined Airport Readiness Fire Facility (ARFF) and Snow Removal Equipment Building (SREB) in Utqiagvik.
- Completed construction for the re-opening of the Palmer Correctional Center.
- Performed energy savings projects at the Department of Environmental Conservation Health Lab, Father Andrew P. Kashevaroff (APK) Museum, and Anchorage area street lighting.
- Completed construction of the McGrath SREB.

Key Component Challenges

- Refine statewide processes and practices, with a focus on normalizing facility maintenance across all buildings in the DFS portfolio as each department has historically maintained its facilities very differently.
- Revised our entire financial structure in FY2022, to include changing key accounting elements for expenditures tracked at the building level.
- Improving employee awareness of DOT&PF safety and health standards.
- Recruitment and retention of qualified and skilled trade persons such as electricians and plumbers.
- Recruitment and retention of qualified engineering, architectural, and professional staff.
- Finding qualified local contractors for work at remote maintenance stations.

Significant Changes in Results to be Delivered in FY2024

- As DFS matures, analysis and organizational design will be ongoing to refine the structure of the division in order to accomplish the mission.
- Identify one consistent occupancy rate methodology across all types of state-owned and occupied buildings.

Statutory and Regulatory Authority

OMB memo dated February 23, 2017: Division of Facilities Services Organizational Decision

OMB memo dated June 27, 2017: Implementation Plan and as subsequently revised

Contact Information
<p>Contact: Jason Sakalaskas, Acting Director Phone: (907) 451-2214 E-mail: jason.sakalaskas@alaska.gov</p>

Facilities Services Personal Services Information					
Authorized Positions			Personal Services Costs		
	FY2023 Management Plan	FY2024 Governor			
Full-time	140	139	Annual Salaries		10,763,028
Part-time	5	5	COLA		437,058
Nonpermanent	1	1	Premium Pay		665,020
			Annual Benefits		7,492,803
			Less 1.37% Vacancy Factor		(264,397)
			Lump Sum Premium Pay		0
Totals	146	145	Total Personal Services		19,093,512

Position Classification Summary					
Job Class Title	Anchorage	Fairbanks	Juneau	Others	Total
Accounting Technician 2	1	0	0	0	1
Administrative Assistant 1	3	1	1	0	5
Administrative Assistant 2	1	0	1	0	2
Administrative Assistant 3	1	1	0	0	2
Administrative Officer 1	3	0	1	0	4
Admn OPS Mgr 1	1	0	0	0	1
Building Maintenance Manager	1	1	1	0	3
College Intern 4	1	0	0	0	1
Division Director - Px	1	0	0	0	1
Division Operations Manager	1	0	0	0	1
Engineer/Architect 1	1	0	0	0	1
Engineer/Architect 2	5	1	0	0	6
Engineer/Architect 3	4	1	1	0	6
Engineering Assistant 1	1	1	1	0	3
Engineering Assistant 2	1	0	0	0	1
Engineering Assistant 3	2	1	0	0	3
Engineering Associate	3	0	0	0	3
Env Svc Jrny 2	0	1	0	1	2
Facilities Manager 2	1	0	1	0	2
Information System Coordinator	1	0	0	0	1
Maint Gen Jrny	3	2	7	4	16
Mt/Gen Sub 1	1	0	3	0	4
Mt/Gen Sub 2	1	0	0	0	1
Mts/Bfc Frmn	1	2	1	1	5
Mts/Bfc Jrny 1	8	6	1	13	28
Mts/Bfc Jrny 2	4	6	3	10	23
Mts/EI Jrny 2	3	3	1	0	7
Mts/Eu Jrny 2	0	0	0	1	1
Mts/Pb Jrny 2	2	5	0	1	8
Office Assistant 2	1	0	0	0	1
Project Assistant	1	0	0	0	1
St LSe&Fac Mgr	1	0	0	0	1
Totals	59	32	23	31	145

Component Detail All Funds
Department of Transportation/Public Facilities

Component: Facilities Services (3195)
RDU: Division of Facilities Services (714)

Non-Formula Component

	FY2022 Actuals	FY2023 Conference Committee	FY2023 Authorized	FY2023 Management Plan	FY2024 Governor	FY2023 Management Plan vs FY2024 Governor	
71000 Personal Services	15,193.0	16,942.1	16,951.5	18,569.2	19,093.5	524.3	2.8%
72000 Travel	229.5	383.8	383.8	386.8	386.8	0.0	0.0%
73000 Services	18,485.9	15,684.4	15,784.3	32,916.1	32,916.1	0.0	0.0%
74000 Commodities	1,416.8	1,928.8	1,928.8	2,254.3	2,254.3	0.0	0.0%
75000 Capital Outlay	548.4	305.0	305.0	305.0	305.0	0.0	0.0%
77000 Grants, Benefits	0.0	0.0	0.0	0.0	0.0	0.0	0.0%
78000 Miscellaneous	0.0	0.0	0.0	0.0	0.0	0.0	0.0%
Totals	35,873.6	35,244.1	35,353.4	54,431.4	54,955.7	524.3	1.0%
Fund Sources:							
1004 Gen Fund (UGF)	826.3	440.6	448.6	938.9	948.8	9.9	1.1%
1005 GF/Prgm (DGF)	0.0	0.0	0.0	322.5	322.5	0.0	0.0%
1007 I/A Rcpts (Other)	26,534.0	30,211.8	30,298.1	32,352.8	30,316.6	-2,036.2	-6.3%
1061 CIP Rcpts (Other)	8,513.3	4,591.7	4,600.5	5,365.6	7,866.2	2,500.6	46.6%
1147 PublicBldg (Other)	0.0	0.0	6.2	15,451.6	15,501.6	50.0	0.3%
Unrestricted General (UGF)	826.3	440.6	448.6	938.9	948.8	9.9	1.1%
Designated General (DGF)	0.0	0.0	0.0	322.5	322.5	0.0	0.0%
Other Funds	35,047.3	34,803.5	34,904.8	53,170.0	53,684.4	514.4	1.0%
Federal Funds	0.0	0.0	0.0	0.0	0.0	0.0	0.0%
Positions:							
Permanent Full Time	139	130	130	140	139	-1	-0.7%
Permanent Part Time	3	2	2	5	5	0	0.0%
Non Permanent	3	2	2	1	1	0	0.0%

Change Record Detail - Multiple Scenarios with Descriptions
Department of Transportation/Public Facilities

Component: Facilities Services (3195)
RDU: Division of Facilities Services (714)

Scenario/Change Record Title	Trans Type	Totals	Personal Services	Travel	Services	Commodities	Capital Outlay	Grants, Benefits	Miscellaneous	Positions		NP
										PFT	PPT	
***** Changes From FY2023 Conference Committee To FY2023 Authorized *****												
FY2023 Conference Committee												
ConfCom		35,244.1	16,942.1	383.8	15,684.4	1,928.8	305.0	0.0	0.0	130	2	2
1004 Gen Fund		440.6										
1007 I/A Rcpts		30,211.8										
1061 CIP Rcpts		4,591.7										
Align Authority for Unallocated Rates Adjustments												
Unalloc		99.9	0.0	0.0	99.9	0.0	0.0	0.0	0.0	0	0	0
1004 Gen Fund		8.0										
1007 I/A Rcpts		83.9										
1061 CIP Rcpts		1.8										
1147 PublicBldg		6.2										

Reallocate unallocated rate adjustments across department's components.

Unallocated Rate Adjustments:

- FY2023 Administrative Systems Rate Adjusted Base Change \$101.4
- FY2023 Administrative Systems Upgrade Ongoing Cost Increases \$594.1
- FY2023 Human Resources Rate Adjusted Base Change \$619.2
- FY2023 Human Resources Rate AspireAlaska \$112.0
- FY2023 Office of Information Technology Core Services Rate Adjusted Base Change \$80.8
- FY2023 Office of Information Technology Core Services Rate Infrastructure Upkeep Increase \$229.9
- FY2023 Office of Information Technology Core Services Rate Software Increases \$509.9
- FY2023 Office of Information Technology Mainframe Increases -\$4.3
- FY2023 Office of Information Technology Other Non-Core Adjusted Base \$2.4
- FY2023 Travel and Accounts Payable Rate Adjusted Base Change -\$34.7

Department Components:

- Facilities Services \$99.9
- Leases \$4.0
- Commissioner's Office \$10.3
- Contracting and Appeals \$1.7
- Equal Employment and Civil Rights \$7.8
- Internal Review \$3.0
- Statewide Administrative Services \$47.6
- Information Systems and Services \$22.4
- Statewide Procurement \$18.3
- Central Region Support Services \$7.1
- Northern Region Support Services \$4.7
- Southcoast Region Support Services \$22.1
- Statewide Aviation \$26.3

Change Record Detail - Multiple Scenarios with Descriptions
Department of Transportation/Public Facilities

Component: Facilities Services (3195)
RDU: Division of Facilities Services (714)

Scenario/Change Record Title	Trans Type	Totals	Personal Services	Travel	Services	Commodities	Capital Outlay	Grants, Benefits	Miscellaneous	Positions		NP
										PFT	PPT	
Program Development and Statewide Planning		\$53.7										
Measurement Standards & Commercial Vehicle Compliance		\$46.6										
Statewide Design and Engineering Services		\$62.7										
Northern Region Design, Engineering, and Construction		\$203.6										
Central Design and Engineering Services		\$145.4										
Southcoast Design and Engineering Services		\$59.1										
Central Region Construction and CIP Support		\$125.5										
Southcoast Region Construction		\$37.6										
State Equipment Fleet		\$96.8										
Central Region Highways and Aviation		\$115.4										
Northern Region Highways and Aviation		\$201.0										
Southcoast Region Highways and Aviation		\$55.1										
Whittier Access and Tunnel		\$0.8										
International Airport Systems Office		\$7.1										
Anchorage Airport Administration		\$24.3										
Anchorage Airport Facilities		\$84.9										
Anchorage Airport Field and Equipment Maintenance		\$65.3										
Anchorage Airport Operations		\$19.7										
Anchorage Airport Safety		\$64.2										
Fairbanks Airport Administration		\$11.1										
Fairbanks Airport Facilities		\$13.3										
Fairbanks Airport Field and Equipment Maintenance		\$16.3										
Fairbanks Airport Operations		\$6.4										
Fairbanks Airport Safety		\$26.2										
Marine Vessel Operations		\$294.8										
Marine Vessel Fuel		-\$0.1										
Marine Engineering		\$13.2										
Overhaul		-\$0.4										
Reservations and Marketing		\$10.3										
Marine Shore Operations		\$48.7										
Vessel Operations Management		\$26.9										
FY2023 Exempt 5% COLA												
SalAdj		9.4	9.4	0.0	0.0	0.0	0.0	0.0	0.0	0	0	0
1007 I/A Rcpts		2.4										
1061 CIP Rcpts		7.0										
FY2023 Exempt 5% COLA:		\$9.4										
Subtotal		35,353.4	16,951.5	383.8	15,784.3	1,928.8	305.0	0.0	0.0	130	2	2

***** Changes From FY2023 Authorized To FY2023 Management Plan *****

Change Record Detail - Multiple Scenarios with Descriptions
Department of Transportation/Public Facilities

Component: Facilities Services (3195)
RDU: Division of Facilities Services (714)

Scenario/Change Record Title	Trans Type	Totals	Personal Services	Travel	Services	Commodities	Capital Outlay	Grants, Benefits	Miscellaneous	Positions		NP
										PFT	PPT	
Transfer Funding and Positions from Multiple Components for Facilities Services Consolidation												
	Trin	19,078.0	2,210.9	3.0	16,538.6	325.5	0.0	0.0	0.0	16	3	0
1004 Gen Fund		490.3										
1005 GF/Prgm		322.5										
1007 I/A Rcpts		2,054.7										
1061 CIP Rcpts		765.1										
1147 PublicBldg		15,445.4										

Division of Facilities Services (DFS) is consolidating its budgeted components into two main components: Facilities Services, which will contain all publicly-owned facilities within the DFS portfolio and all facility activities of all kinds and types; and Leases, which will contain all direct leasing authority and activities.

This will reduce the number of components under DFS from six to two and reduce the number of split positions. The overall benefit will be felt across the board in handling fewer budgeted components and enable better visibility into leasing costs vs. facility costs.

The following positions are transferred from Lease Administration:

- Full-time, Administrative Officer 1 (02-5142), range 17, located in Anchorage
- Full-time, State Leasing & Facilities Manager (02-5160), range 25, located in Anchorage
- Full-time, Administrative Assistant 1 (02-5164), range 12, located in Anchorage

The following positions are transferred from Facilities:

- Full-time, Maintenance Specialist – Building/Facility/Construction – Journey 2 Lead (25-1191), wage grade 51, located in Anchorage
- Full-time, Maintenance Specialist – Building/Facility/Construction – Journey 2 Lead (25-2103), wage grade 51, located in Fairbanks
- Full-time, Maintenance Specialist – Building/Facility/Construction – Journey 2 Lead (25-2155), wage grade 51, located in Nome
- Full-time, Maintenance Specialist – Building/Facility/Construction – Journey 1 (25-2158), wage grade 53, located in Juneau
- Part-time, Maintenance Generalist – Sub-Journey 1 (25-2434), wage grade 58, located in Juneau
- Part-time, Maintenance Generalist – Sub-Journey 1 (25-2451), wage grade 58, located in Juneau
- Full-time, Maintenance Specialist – Building/Facility/Construction – Journey 2 Lead (25-2532), wage grade 51, located in Juneau
- Full-time, Maintenance Generalist – Journey (25-2535), wage grade 54, located in Juneau
- Full-time, Maintenance Generalist – Journey (25-2536), wage grade 54, located in Juneau
- Part-time, Maintenance Generalist – Sub-Journey 1 (25-2538), wage grade 58, located in Juneau
- Full-time, Maintenance Generalist – Journey (25-2541), wage grade 54, located in Juneau
- Full-time, Maintenance Specialist – Building/Facility/Construction – Foreman (25-2543), wage grade 50, located in Juneau
- Full-time, Maintenance Generalist – Journey (25-2544), wage grade 54, located in Juneau
- Full-time, Maintenance Generalist – Journey (25-2545), wage grade 54, located in Juneau

The following positions are transferred from Facilities Administration:

- Full-time, Facilities Manager 2 (02-5178), range 21, located in Juneau

The following positions are transferred from Non-Public Building Fund Facilities:

- Full-time, Maintenance Generalist – Journey (01-079X), wage grade 54, located in Juneau

Transfer Mechanic - Automotive - Journey (05-6031) to Southcoast Region Highways & Aviation

Change Record Detail - Multiple Scenarios with Descriptions
Department of Transportation/Public Facilities

Component: Facilities Services (3195)
RDU: Division of Facilities Services (714)

Scenario/Change Record Title	Trans Type	Totals	Personal Services	Travel	Services	Commodities	Capital Outlay	Grants, Benefits	Miscellaneous	Positions		NP
										PFT	PPT	
	Trout	0.0	0.0	0.0	0.0	0.0	0.0	0.0	0.0	-1	0	0

Transfer full-time Mechanic - Automotive - Journey (05-6031), wage grade 54, located in Mount Edgecumbe, to provide direct oversight of both district superintendents and the maintenance specialist within Southcoast Region Highways & Aviation, bringing the operations and capital program together for consistency across the region.

The remaining staff in Facilities Services are sufficient to accommodate anticipated workload.

Delete Expired Non-Permanent Engineering Assistant I (25-N12061)

PosAdj	0.0	0.0	0.0	0.0	0.0	0.0	0.0	0.0	0.0	0	0	-1
--------	-----	-----	-----	-----	-----	-----	-----	-----	-----	---	---	----

Delete expired non-permanent Engineering Assistant I, range 17, located in Anchorage.

Transfer Maintenance Positions to Department of Education for Operation Efficiency

Atroat	0.0	0.0	0.0	0.0	0.0	0.0	0.0	0.0	0.0	-5	0	0
--------	-----	-----	-----	-----	-----	-----	-----	-----	-----	----	---	---

Transfer five full-time maintenance positions to the Department of Education and Early Development for maintenance services. The Mt. Edgecumbe High School (MEHS) is a residential school operated by the Department of Education and Early Development (DEED). These positions provide maintenance services essential to the operations of MEHS and the health and safety of the students.

Five full-time positions:

- 05-6002 Building Maintenance Superintendent
- 05-6004 Maintenance Generalist, Journey
- 05-6015 Maintenance Specialist, B/F/C, Journey 1
- 05-6016 Maintenance Generalist, Lead
- 05-6020 Maintenance Generalist, Journey

Align Authority with Anticipated Expenditures

LIT	0.0	-593.2	0.0	593.2	0.0	0.0	0.0	0.0	0.0	0	0	0
-----	-----	--------	-----	-------	-----	-----	-----	-----	-----	---	---	---

Transfer authority from personal services to services to meet anticipated expenditures.

Subtotal	54,431.4	18,569.2	386.8	32,916.1	2,254.3	305.0	0.0	0.0	0.0	140	5	1
-----------------	-----------------	-----------------	--------------	-----------------	----------------	--------------	------------	------------	------------	------------	----------	----------

***** **Changes From FY2023 Management Plan To FY2024 Governor** *****

Transfer Maintenance Generalist - Sub-Journey 2 (25-2231) to Northern Region Support Services for Program Alignment

Trout	0.0	0.0	0.0	0.0	0.0	0.0	0.0	0.0	0.0	-1	0	0
-------	-----	-----	-----	-----	-----	-----	-----	-----	-----	----	---	---

Transfer full-time Maintenance Generalist - Sub-Journey 2 (25-2231), wage grade 56, located in Tazlina, to Northern Region Support Services for program alignment.

Replace Funding Source to Align with Anticipated Revenue

Change Record Detail - Multiple Scenarios with Descriptions
Department of Transportation/Public Facilities

Component: Facilities Services (3195)
RDU: Division of Facilities Services (714)

Scenario/Change Record Title	Trans Type	Totals	Personal Services	Travel	Services	Commodities	Capital Outlay	Grants, Benefits	Miscellaneous	Positions		
										PFT	PPT	NP
	FndChg	0.0	0.0	0.0	0.0	0.0	0.0	0.0	0.0	0	0	0
1007 I/A Rcpts		-2,356.3										
1061 CIP Rcpts		2,356.3										
Replace interagency receipt authority with capital improvement project authority to reflect proper use of funds and align with anticipated revenue.												
FY2024 AlaskaCare Health Insurance Increase - Exempt and Partially Exempt												
	SalAdj	2.6	2.6	0.0	0.0	0.0	0.0	0.0	0.0	0	0	0
1061 CIP Rcpts		2.6										
FY2024 AlaskaCare health insurance increase for exempt and partially exempt employees from \$1,685 to \$1,793 per member per month.: \$2.6												
FY2024 PERS Rate Adjustment												
	SalAdj	35.6	35.6	0.0	0.0	0.0	0.0	0.0	0.0	0	0	0
1004 Gen Fund		0.6										
1007 I/A Rcpts		19.0										
1061 CIP Rcpts		13.1										
1147 PublicBldg		2.9										
FY2024 PERS rate adjustment to 25.10%: \$35.6												
FY2024 Salary and Health Insurance Increases												
	SalAdj	486.1	486.1	0.0	0.0	0.0	0.0	0.0	0.0	0	0	0
1004 Gen Fund		9.3										
1007 I/A Rcpts		301.1										
1061 CIP Rcpts		128.6										
1147 PublicBldg		47.1										
FY2024 Salary and Health Insurance Increases: \$486.1FY2024 GGU cost of living increase 2.5%: \$92.7												
FY2024 LTC cost of living increase 3.25%: \$323.7												
FY2024 SU cost of living increase 1%: \$20.9												
FY2024 AlaskaCare insurance from \$1,685 to \$1,793 per member per month.: \$18.4												
FY2024 GGU health insurance increase from \$1,567.50 to \$1,573.50 per member per month.: \$2.4												
FY2024 LTC health insurance increase from \$1,580 to \$1,605 per member per month.: \$28.0												
Totals		54,955.7	19,093.5	386.8	32,916.1	2,254.3	305.0	0.0	0.0	139	5	1

Line Item Detail (1676)
Department of Transportation/Public Facilities
Travel

Component: Facilities Services (3195)

Line Number	Line Name		FY2022 Actuals	FY2023 Management Plan	FY2024 Governor
2000	Travel		229.5	386.8	386.8
Object Class	Servicing Agency	Explanation	FY2022 Actuals	FY2023 Management Plan	FY2024 Governor
2000 Travel Detail Totals			229.5	386.8	386.8
2000	In-State Employee Travel	In-state travel in support of division functions.	229.5	386.8	386.8

Line Item Detail (1676)
Department of Transportation/Public Facilities
Services

Component: Facilities Services (3195)

Line Number	Line Name		FY2022 Actuals	FY2023 Management Plan	FY2024 Governor
3000	Services		18,485.9	32,916.1	32,916.1
Object Class	Servicing Agency	Explanation	FY2022 Actuals	FY2023 Management Plan	FY2024 Governor
3000 Services Detail Totals			18,485.9	32,916.1	32,916.1
3000	Education Services	Training and conference fees for staff, excluding Information Technology.	9.4	30.0	16.0
3001	Financial Services	Financial services.	111.8	470.0	637.7
3003	Information Technology	Information Technology (IT) training, IT consulting, IT equipment leases, software licensing and software maintenance.	35.7	50.0	50.0
3004	Telecommunications	Long distance, local phone service, and cellular service provided by vendors.	154.4	450.0	160.0
3005	Health Services	Drug and alcohol testing for Commercial Driver License (CDL) employees.	1.6	4.0	4.0
3006	Delivery Services	Delivery services.	47.8	60.0	50.0
3007	Advertising and Promotions	Advertising and local media	0.4	1.0	1.0
3008	Utilities	Utility services.	10,223.6	16,090.0	18,000.0
3009	Structure/Infrastructure/Land	Structure/infrastructure/land services.	1,741.8	6,598.3	7,500.0
3010	Equipment/Machinery	Rental of machinery and equipment, such as backhoe, compressor, jackhammer, man-lift and compactors as needed when traveling out in the field.	187.9	350.0	190.0
3011	Other Services	Services for the maintenance and operations of facilities and to run the	56.4	1,285.7	60.0

Line Item Detail (1676)
Department of Transportation/Public Facilities
Services

Component: Facilities Services (3195)

Object Class	Servicing Agency	Explanation	FY2022 Actuals	FY2023 Management Plan	FY2024 Governor
3000 Services Detail Totals			18,485.9	32,916.1	32,916.1
		division.			
3012	Inter-Agency Federal Indirect Rate Allocation	ICAP recovery	2,247.7	3,000.0	2,250.0
3015	Inter-Agency Conservation/Environmental	Procurement and travel card services for governmental.	0.0	5.0	1.0
3017	Inter-Agency Information Technology Non-Telecommunications	Computer services provided by Department of Administration such as central server, data storage, printing, network services, open connect, and task order system.	212.1	230.0	230.0
3017	Inter-Agency Information Technology Non-Telecommunications	Admin - Department-wide Computer services provided by Department of Administration such as central server, data storage, printing, network services, open connect, and task order system.	43.1	350.0	50.0
3018	Inter-Agency Information Technology Telecommunications	Admin - Department-wide Telecommunications services provided by the Department of Administration such as basic telephone services, equipment and features, dedicated voice/data line service, statewide paging, two-way radio, and video conferencing.	20.7	28.0	24.0
3020	Inter-Agency Building Maintenance	Other building maintenance utility services.	0.0	160.0	157.3
3020	Inter-Agency Building Maintenance	Labor - Department-wide Boiler and mechanical inspections.	0.0	10.0	10.0
3021	Inter-Agency Mail	Admin - Department-wide Chargeback fees for central mail services such as mailing vendor payments and payroll warrants.	1.2	2.0	2.0
3022	Inter-Agency Human Resources	Admin - Department-wide Interagency Human Resource chargeback fees.	80.9	82.0	82.0
3023	Inter-Agency Building Leases	Trans - Facilities (3296) Building Leases – maintenance and operations.	91.3	93.0	93.0
3023	Inter-Agency Building Leases	Trans - Facilities Administration (3297) Building Leases – maintenance and	5.3	6.0	6.0

Line Item Detail (1676)
Department of Transportation/Public Facilities
Services

Component: Facilities Services (3195)

Object Class		Servicing Agency	Explanation	FY2022 Actuals	FY2023 Management Plan	FY2024 Governor
3000 Services Detail Totals				18,485.9	32,916.1	32,916.1
			operations.			
3024	Inter-Agency Legal	Law - Department-wide	Legal services provided by the Department of Law.	4.8	8.0	5.0
3026	Inter-Agency Insurance		Risk management.	3.3	4.0	4.0
3026	Inter-Agency Insurance	Admin - Department-wide	Risk management reimbursable services agreement by Department of Administration.	2,518.2	2,800.0	2,600.0
3027	Inter-Agency Financial		Chargeback fees for IRIS FIN/IRIS HRM/ALDER.	10.2	20.0	20.0
3027	Inter-Agency Financial	Admin - Department-wide	Chargeback fees for AKPAY/ALDER.	73.5	90.0	90.0
3028	Inter-Agency Americans with Disabilities Act Compliance	Admin - Department-wide	Chargeback fees for the statewide coordinator for the Americans with Disabilities Act (ADA).	1.3	1.5	1.5
3029	Inter-Agency Education/Training		Division of General Services procurement training.	1.2	2.0	2.0
3029	Inter-Agency Education/Training	Labor - Department-wide	Staff training	0.0	1.5	1.0
3035	Inter-Agency Other Equipment/Machinery	Admin - Department-wide	Other equipment/machinery services.	0.0	0.1	0.1
3037	State Equipment Fleet	Trans - State Equipment Fleet (2791)	State equipment fleet operating, fuel and replacement fees.	598.5	620.0	610.0
3038	Inter-Agency Management/Consulting	Gov - Department-wide	Office of Management and Budget - Budget Analyst support.	1.5	8.0	8.0
3039	DOT/PF Time & Equipment System		Vehicle usage billed to the operating budget based on established rates and actual usage of vehicles.	0.3	6.0	0.5

Line Item Detail (1676)
Department of Transportation/Public Facilities
Commodities

Component: Facilities Services (3195)

Line Number	Line Name		FY2022 Actuals	FY2023 Management Plan	FY2024 Governor
4000	Commodities		1,416.8	2,254.3	2,254.3
Object Class	Servicing Agency	Explanation	FY2022 Actuals	FY2023 Management Plan	FY2024 Governor
4000 Commodities Detail Totals			1,416.8	2,254.3	2,254.3
4000	Business	Commodities purchases for the maintenance and operations of facilities and to run the division.	61.4	85.0	70.0
4001	Agricultural	Agricultural supplies.	0.2	5.4	0.2
4002	Household/Institutional	Household/institutional supplies.	67.8	150.0	68.0
4004	Safety	Safety supplies.	68.5	80.0	68.5
4005	Building Materials	Building materials.	138.6	225.0	200.0
4006	Signs and Markers	Signs and markers supplies.	2.1	10.0	10.0
4007	Asphalt	Asphalt.	0.9	4.5	5.0
4008	Aggregate	Aggregate rock for landscaping projects.	5.4	5.0	8.0
4011	Electrical	Electrical supplies.	152.0	215.0	250.0
4012	Plumbing	Plumbing supplies.	98.3	205.0	280.0
4013	Lube Oils/Grease/Solvents	Lube oils/grease/solvents supplies.	36.4	40.0	50.0
4014	Bottled Gas	Bottled Gas.	0.7	1.4	2.0
4015	Parts and Supplies	Parts and supplies.	583.3	981.0	1,005.6
4016	Paint/Preservatives	Paint and preservatives.	29.0	40.0	40.0
4017	Sand	Sand.	0.4	2.0	1.0
4018	Surface Chemicals	Surface chemical supplies.	15.3	45.0	25.0
4019	Small Tools/Minor Equipment	Small Tools/Minor Equipment.	149.9	150.0	160.0
4020	Equipment Fuel	Equipment fuel.	6.1	10.0	10.0
4022	Commodity Transfer	Incorrectly coded to 4022 should have been for allocation purposes	0.5	0.0	1.0

Line Item Detail (1676)
Department of Transportation/Public Facilities
Commodities

Component: Facilities Services (3195)

Object Class	Servicing Agency	Explanation	FY2022 Actuals	FY2023 Management Plan	FY2024 Governor
4000 Commodities Detail Totals			1,416.8	2,254.3	2,254.3
only.					

Line Item Detail (1676)
Department of Transportation/Public Facilities
Capital Outlay

Component: Facilities Services (3195)

Line Number	Line Name		FY2022 Actuals	FY2023 Management Plan	FY2024 Governor
5000	Capital Outlay		548.4	305.0	305.0
Object Class	Servicing Agency	Explanation	FY2022 Actuals	FY2023 Management Plan	FY2024 Governor
5000 Capital Outlay Detail Totals			548.4	305.0	305.0
5003	Capital Lease Payments	Capital Lease Payments	291.2	295.0	304.9
5004	Equipment	Equipment purchases for the maintenance and operations of facilities and to run the division.	257.1	10.0	0.0
5999	DOT/PF Personal Services	T&E's incorrectly coded to 5999 should be personal services object 1000.	0.1	0.0	0.1

Revenue Detail (1681)
Department of Transportation/Public Facilities

Component: Facilities Services (3195)

Revenue Type (OMB Fund Code) Revenue Source	Component	Comment	FY2022 Actuals	FY2023 Management Plan	FY2024 Governor
5005 GF/Prgm (1005 GF/Prgm)			0.0	322.5	322.5
5103 Program Receipts - Charges for Services		Linny Pacillo Parkiing Garage parking revenue.	0.0	322.5	322.5
5007 I/A Rcpts (1007 I/A Rcpts)			26,534.0	32,352.8	32,672.9
5301 Inter-Agency Receipts		Reimbursable Service Agreement with miscellaneous departments for facilities maintenance and operations.	2,560.6	4,945.5	4,881.4
5301 Inter-Agency Receipts	Admin - Department-wide	Occupancy building Receipt authority to collect revenue from Department of Administration for occupancy agreements	105.4	108.3	116.7
5301 Inter-Agency Receipts	Correct - Department-wide	Receipt authority to collect revenue from Department of Corrections for Facilities Maintenance and Operations via Service Level Agreement.	34.5	56.3	56.3
5301 Inter-Agency Receipts	Courts - Department-wide	Receipt authority to collect revenue from Alaska Courts for occupancy agreements.	1,500.7	1,000.0	1,216.8
5301 Inter-Agency Receipts	E&ED - Department-wide	Receipt authority to collect revenue from Department of Education & Early Development for Facilities Maintenance and Operations via Service Level Agreement.	19.2	1,035.7	1,035.7
5301 Inter-Agency Receipts	EnvCon - Department-wide	Receipt authority to collect revenue from Department of Environmental Conservation for occupancy agreements.	19.1	25.0	25.0
5301 Inter-Agency Receipts	FishGm - Department-wide	Receipt authority to collect revenue from Department of Fish and Game for occupancy agreements.	186.6	92.0	91.6
5301 Inter-Agency Receipts	Gov - Department-wide	Receipt authority to collect revenue from Office of the Governor for Facilities Maintenance and	0.0	0.0	0.0

Revenue Detail (1681)
Department of Transportation/Public Facilities

Component: Facilities Services (3195)

Revenue Type (OMB Fund Code) Revenue Source	Component	Comment	FY2022 Actuals	FY2023 Management Plan	FY2024 Governor
5301 Inter-Agency Receipts	H&SS - Department-wide	Operations via Service Level Agreement. Receipt authority to collect revenue from Department of Health and Social Services for Facilities Maintenance and Operations via Service Level Agreement.	405.3	450.0	454.9
5301 Inter-Agency Receipts	Labor - Department-wide	Receipt authority to collect revenue from Department of Labor and Workforce Development for Facilities Maintenance and Operations via Service Level Agreement.	3.3	580.0	783.6
5301 Inter-Agency Receipts	Law - Department-wide	Receipt authority to collect revenue from Department of Law for Facilities Maintenance and Operations via Service Level Agreement.	37.8	38.2	38.2
5301 Inter-Agency Receipts	Legis - Department-wide	Receipt authority to collect revenue from Legislature for Facilities Maintenance and Operations via Service Level Agreement.	111.6	105.0	101.4
5301 Inter-Agency Receipts	M&VA - Department-wide	Receipt authority to collect revenue from Department of Military and Veterans Affairs for Facilities Maintenance and Operations via Service Level Agreement.	101.0	105.0	104.2
5301 Inter-Agency Receipts	NatRes - Department-wide	Receipt authority to collect revenue from Department of Natural Resources for Facilities Maintenance and Operations via Service Level Agreement.	85.3	95.9	95.9
5301 Inter-Agency Receipts	PubSaf - Department-wide	Receipt authority to collect revenue from Department of Public Safety for Facilities Maintenance and Operations via Service Level Agreement.	1,130.4	1,269.8	1,269.8

Revenue Detail (1681)
Department of Transportation/Public Facilities

Component: Facilities Services (3195)

Revenue Type (OMB Fund Code) Revenue Source	Component	Comment	FY2022 Actuals	FY2023 Management Plan	FY2024 Governor
5301 Inter-Agency Receipts	Rev - Department-wide	Reimbursement from any state agency's operating budget for services provided. Typical requests are for professional construction management. Specific agreements and departments served vary from year to year.	1.6	1.6	0.0
5301 Inter-Agency Receipts	Trans - Central Highways and Aviation (564)	Receipt authority to collect revenue from Department of Transportation and Public Facilities (DOT&PF) Central Region highways and aviation component for Facilities Maintenance and Operations via Service Level Agreement.	0.0	0.0	0.0
5301 Inter-Agency Receipts	Trans - Central Region Facilities (566)	Receipt authority to collect revenue from Department of Transportation and Public Facilities (DOT&PF) Central Region facilities component for Facilities Maintenance and Operations via Service Level Agreement.	5,291.3	6,200.0	6,168.3
5301 Inter-Agency Receipts	Trans - Northern Region Facilities (2069)	Receipt authority to collect revenue from Department of Transportation and Public Facilities (DOT&PF) Northern Region facilities components for Facilities Maintenance and Operations via Service Level Agreement.	11,679.3	10,899.0	10,851.7
5301 Inter-Agency Receipts	Trans - Southcoast Region Facilities (604)	Receipt authority to collect revenue from Department of Transportation and Public Facilities (DOT&PF) Southcoast Region facilities component for Facilities Maintenance and Operations via Service Level Agreement.	3,243.2	3,160.0	3,195.9
5301 Inter-Agency Receipts	Univ - Department-wide	Receipt authority to collect revenue from University of Alaska for	0.0	0.0	0.0

Revenue Detail (1681)
Department of Transportation/Public Facilities

Component: Facilities Services (3195)

Revenue Type (OMB Fund Code) Revenue Source	Component	Comment	FY2022 Actuals	FY2023 Management Plan	FY2024 Governor
5301 Inter-Agency Receipts	Courts - Department-wide	Facilities Maintenance and Operations via Service Level Agreement. Reimbursable services agreement receipts authority from Alaska Court System Facilities for Maintenance and Operations.	0.0	2,185.5	2,185.5
5302 Inter-Agency Receipts - Prior Year Reimbursement Recovery		Receipt authority to collect revenue for prior year recovery	17.8	0.0	0.0
5061 CIP Rcpts (1061 CIP Rcpts)			8,513.3	7,801.7	7,866.2
5351 Capital Improvement Project Inter-Agency		Recovery of indirect costs from the capital budget via the department's Indirect Cost Allocation Plan (ICAP).	4,142.5	4,162.9	4,162.9
5351 Capital Improvement Project Inter-Agency		Capital improvement project receipts for work in direct support of capital projects.	4,370.8	3,638.8	3,703.3
6147 PublicBldg (1147 PublicBldg)			0.0	15,451.6	15,501.6
6764 Public Building Fund - Charge for Services		Occupancy costs for occupying Public Building Fund buildings.	0.0	15,451.6	15,501.6

Inter-Agency Services (1682)
Department of Transportation/Public Facilities

Component: Facilities Services (3195)

				FY2022 Actuals	FY2023 Management Plan	FY2024 Governor
Component Totals				3,440.3	4,100.1	3,582.6
With Department of Administration				2,738.9	3,353.6	2,849.6
With Department of Labor and Workforce Development				0.0	11.5	11.0
With Department of Transportation/Public Facilities				695.1	719.0	709.0
With Department of Law				4.8	8.0	5.0
With Office of the Governor				1.5	8.0	8.0
Object Class	Servicing Agency	Explanation	FY2022 Actuals	FY2023 Management Plan	FY2024 Governor	
3017	Inter-Agency Information Technology Non-Telecommunications	Admin - Department-wide	43.1	350.0	50.0	
3018	Inter-Agency Information Technology Telecommunications	Admin - Department-wide	20.7	28.0	24.0	
3020	Inter-Agency Building Maintenance	Labor - Department-wide	0.0	10.0	10.0	
3021	Inter-Agency Mail	Admin - Department-wide	1.2	2.0	2.0	
3022	Inter-Agency Human Resources	Admin - Department-wide	80.9	82.0	82.0	
3023	Inter-Agency Building Leases	Trans - Facilities (3296)	91.3	93.0	93.0	
3023	Inter-Agency Building Leases	Trans - Facilities Administration (3297)	5.3	6.0	6.0	
3024	Inter-Agency Legal	Law - Department-wide	4.8	8.0	5.0	

Inter-Agency Services (1682)
Department of Transportation/Public Facilities

Component: Facilities Services (3195)

Object Class		Servicing Agency	Explanation	FY2022 Actuals	FY2023 Management Plan	FY2024 Governor
3026	Inter-Agency Insurance	Admin - Department-wide	Risk management reimbursable services agreement by Department of Administration.	2,518.2	2,800.0	2,600.0
3027	Inter-Agency Financial	Admin - Department-wide	Chargeback fees for AKPAY/ALDER.	73.5	90.0	90.0
3028	Inter-Agency Americans with Disabilities Act Compliance	Admin - Department-wide	Chargeback fees for the statewide coordinator for the Americans with Disabilities Act (ADA).	1.3	1.5	1.5
3029	Inter-Agency Education/Training	Labor - Department-wide	Staff training	0.0	1.5	1.0
3035	Inter-Agency Other Equipment/Machinery	Admin - Department-wide	Other equipment/machinery services.	0.0	0.1	0.1
3037	State Equipment Fleet	Trans - State Equipment Fleet (2791)	State equipment fleet operating, fuel and replacement fees.	598.5	620.0	610.0
3038	Inter-Agency Management/Consulting	Gov - Department-wide	Office of Management and Budget - Budget Analyst support.	1.5	8.0	8.0

Personal Services Expenditure Detail
Department of Transportation/Public Facilities

Scenario: FY2024 Governor (19867)
Component: Facilities Services (3195)
RDU: Division of Facilities Services (714)

PCN	Job Class Title	Time Status	Retire Code	Barg Unit	Location	Salary Sched	Range / Step	Comp Months	Split / Count	Annual Salaries	COLA	Premium Pay	Annual Benefits	Total Costs	UGF Amount
01-079X	Maint Gen Jrny	FT	A	LL	Juneau	2AA	54J	12.0		58,645	2,858	3,553	44,998	110,054	110,054
02-5010	Contracting Officer 3	FT	A	GP	Anchorage	200	19C / D	0.5	*	3,069	108	0	2,061	5,238	0
02-5061	Facilities Manager 2	FT	A	SS	Anchorage	200	21A / B	12.0		83,158	1,176	0	56,067	140,401	0
02-5127	Contracting Officer 3	FT	A	GP	Anchorage	200	19J / K	0.5	*	3,637	129	0	2,296	6,062	0
02-5142	Administrative Officer 1	FT	A	SS	Anchorage	200	17D / E	12.0		70,593	998	0	50,870	122,461	0
02-5154	Contracting Officer 3	FT	A	GP	Anchorage	200	19D / E	0.5	*	3,166	112	0	2,101	5,379	0
02-5156	Contracting Officer 3	FT	A	GP	Anchorage	200	19D / E	0.5	*	3,166	112	0	2,101	5,379	0
02-5157	Administrative Assistant 2	FT	A	GP	Juneau	205	14F / G	12.0		60,548	2,140	0	44,041	106,729	0
02-5160	St LSe&Fac Mgr	FT	A	XE	Anchorage	N00	25J / K	12.0		128,076	0	0	74,501	202,577	0
02-5161	Administrative Officer 1	FT	A	SS	Juneau	205	17P	12.0		102,190	1,445	0	63,938	167,573	0
02-5164	Administrative Assistant 1	FT	A	GP	Anchorage	200	12B / C	12.0		43,953	1,553	0	37,178	82,684	0
02-5165	Contracting Officer 4	FT	A	SS	Anchorage	99	22M	4.0	*	39,718	561	0	23,652	63,931	0
02-5175	Administrative Assistant 1	FT	A	GP	Juneau	205	12B / C	12.0		46,157	1,631	0	38,089	85,877	0
02-5178	Facilities Manager 2	FT	A	GP	Juneau	205	21K	12.0		104,930	3,708	0	62,398	171,036	0
05-3021	Mts/Bfc Jrny 2	FT	A	LL	Juneau	2AA	51J / K	12.0		71,947	3,591	6,223	51,604	133,365	0
05-8389	Mts/Pb Jrny 2	FT	A	LL	Seward	2CC	51L	12.0		78,224	3,979	8,392	55,097	145,692	0
05-8435	Mts/Bfc Frmn	FT	A	LL	Seward	2CC	50O / P	12.0		94,843	5,143	17,092	65,569	182,647	0
05-8519	Mts/Eu Jrny 2	FT	A	LL	Seward	2CC	51K / L	12.0		78,841	4,246	13,586	57,500	154,173	0
05-8653	Mts/Bfc Jrny 2	FT	A	LL	Seward	2CC	51F	12.0		70,124	3,803	12,645	53,506	140,078	0
06-3621	Mts/Bfc Jrny 1	FT	A	LL	Fairbanks	2EE	53B / C	12.0		58,056	3,134	10,166	47,489	118,845	0
06-6005	Mts/Bfc Jrny 2	FT	A	LL	Valdez	2FF	51M / N	12.0		85,491	4,623	15,127	60,888	166,129	0
07-4554	Maint Gen Jrny	FT	A	LL	Seward	2CC	54B / C	12.0		52,822	2,851	9,232	44,938	109,843	0
09-0012	Engineer/Architect 2	FT	A	GP	Anchorage	200	23L / M	12.0		122,402	4,326	0	69,624	196,352	0
12-1510	Env Svc Jrny 2	FT	A	LL	Fairbanks	1EE	60N / O	12.0		53,633	2,908	9,671	45,455	111,667	0
12-1540	Maint Gen Jrny	FT	A	LL	Fairbanks	1EE	54K / L	12.0		66,876	3,609	11,681	51,764	133,930	0
20-1070	Administrative Assistant 1	FT	A	GP	Anchorage	200	12A / B	12.0		42,530	1,503	0	36,589	80,622	0
25-0011	Project Assistant	FT	A	GP	Anchorage	100	16A / B	12.0		55,877	1,975	0	42,109	99,961	0
25-0018	Administrative Officer 1	FT	A	SS	Anchorage	200	17A / B	12.0		63,322	895	0	47,863	112,080	0
25-0354	Mts/Bfc Jrny 1	FT	A	LL	Anchorage	2AA	53N / O	12.0		75,094	3,674	4,874	52,347	135,989	0
25-0380	Engineer/Architect 3	FT	A	SS	Anchorage	200	25M	12.0		144,290	2,040	0	81,351	227,681	0
25-0388	Office Assistant 2	FT	A	GP	Anchorage	200	10B / C	12.0		38,433	1,358	0	34,895	74,686	0
25-0420	Engineering Assistant 3	FT	A	GP	Fairbanks	203	21C / D	12.0		86,639	3,415	9,996	58,967	159,017	0
25-0436	Administrative Assistant 3	FT	A	GP	Anchorage	200	15A / B	12.0		51,913	1,835	0	40,470	94,218	0
25-0443	Engineer/Architect 3	FT	A	GP	Anchorage	200	25B / C	12.0		106,763	3,773	0	63,156	173,692	0
25-0453	Engineering Associate	FT	A	GP	Anchorage	200	21B / C	12.0		81,159	3,089	6,243	55,148	145,639	0
25-0462	Engineering Associate	FT	A	GP	Anchorage	200	21B / C	12.0		81,159	3,115	6,992	55,458	146,724	0
25-0463	Engineering Assistant 3	FT	A	GP	Anchorage	200	21D / E	12.0		86,333	3,325	7,765	57,918	155,341	0
25-0464	Engineering Assistant 3	FT	A	GP	Anchorage	200	21L / M	12.0		104,033	3,957	7,938	65,310	181,238	0

Note: If a position is split, an asterisk (*) will appear in the Split/Count column. If the split position is also counted in the component, two asterisks (**) will appear in this column. [No valid job title] appearing in the Job Class Title indicates that the PCN has an invalid class code or invalid range for the class code effective date of this scenario.

Personal Services Expenditure Detail
Department of Transportation/Public Facilities

Scenario: FY2024 Governor (19867)
Component: Facilities Services (3195)
RDU: Division of Facilities Services (714)

PCN	Job Class Title	Time Status	Retire Code	Barg Unit	Location	Salary Sched	Range / Step	Comp Months	Split / Count	Annual Salaries	COLA	Premium Pay	Annual Benefits	Total Costs	UGF Amount
25-0466	Engineer/Architect 1	FT	A	GP	Anchorage	200	22C / D	12.0		88,476	3,363	6,675	58,353	156,867	0
25-0467	Accounting Technician 2	FT	A	GP	Anchorage	200	14J / K	12.0		61,968	2,215	716	44,925	109,824	0
25-0529	Engineering Assistant 1	FT	A	GP	Anchorage	200	17B / C	12.0		61,021	2,238	2,301	45,189	110,749	0
25-0588	Mts/Bfc Jrny 1	FT	A	LL	Anchorage	2AA	53J / K	12.0		64,409	3,063	2,252	46,844	116,568	116,568
25-0673	Engineer/Architect 2	FT	A	GP	Anchorage	200	23G / J	12.0		111,209	3,930	0	64,995	180,134	0
25-0703	Engineering Assistant 1	FT	A	GP	Juneau	205	17B / C	12.0		64,627	2,369	2,416	46,728	116,140	0
25-0764	Mts/Bfc Jrny 2	FT	A	LL	Bethel	2II	51D / E	12.0		72,795	3,937	12,892	54,713	144,337	0
25-0837	Engineering Assistant 1	FT	A	GP	Fairbanks	203	17B / C	12.0		63,525	2,413	4,741	47,233	117,912	0
25-0845	Engineer/Architect 2	FT	A	GP	Anchorage	200	23K / L	12.0		115,126	4,069	0	66,615	185,810	0
25-0961	Engineer/Architect 2	FT	A	GP	Anchorage	200	23E / F	12.0		103,272	3,650	0	61,712	168,634	0
25-0969	Engineer/Architect 3	FT	A	SS	Anchorage	200	25F / J	12.0		130,437	1,844	0	75,621	207,902	0
25-1040	Mts/Bfc Jrny 1	FT	A	LL	Anchorage	2AA	53A / B	12.0		52,448	2,844	9,457	44,877	109,626	0
25-1186	Building Maintenance Manager	FT	A	SS	Anchorage	200	22E / F	12.0		102,550	1,450	0	64,087	168,087	0
25-1189	Administrative Assistant 2	FT	A	GP	Anchorage	200	14D / E	12.0		53,010	1,873	0	40,924	95,807	0
25-1190	Mt/Gen Sub 2	FT	A	LL	Anchorage	2AA	56B / C	12.0		45,543	2,470	8,212	41,506	97,731	0
25-1191	Mts/Bfc Jrny 2	FT	A	LL	Anchorage	2AA	51F / J	12.0		64,621	3,172	4,425	47,830	120,048	0
25-1192	Mts/Bfc Jrny 1	FT	A	LL	Anchorage	2AA	53N	12.0		72,370	3,565	5,220	51,364	132,519	0
25-1193	Mts/EI Jrny 2	FT	A	LL	Anchorage	2AA	51K	12.0		73,389	3,656	6,193	52,188	135,426	0
25-1194	Mts/EI Jrny 2	FT	A	LL	Anchorage	2AA	51B / C	12.0		61,494	3,335	11,088	49,293	125,210	0
25-1195	Mts/Bfc Jrny 2	FT	A	LL	Palmer	2BB	51K / L	12.0		77,112	4,182	13,905	56,917	152,116	0
25-1196	Mts/Bfc Jrny 2	FT	A	LL	Kenai	2CC	51P	12.0		90,151	4,889	16,256	63,283	174,579	0
25-1198	Mts/Bfc Jrny 2	FT	A	LL	Anchorage	2AA	51N / O	12.0		82,962	4,490	14,775	59,697	161,924	0
25-1199	Mts/Bfc Jrny 1	FT	A	LL	Kenai	2CC	53F	12.0		62,138	3,370	11,205	49,607	126,320	0
25-1200	Mts/Bfc Frmn	FT	A	LL	Anchorage	2AA	50N / O	12.0		87,322	4,726	15,551	61,821	169,420	0
25-1201	Mts/Bfc Jrny 2	FT	A	LL	Anchorage	2AA	51M / N	12.0		76,830	4,209	14,775	57,160	152,974	0
25-1202	Mts/Pb Jrny 2	FT	A	LL	Anchorage	2AA	51L / M	12.0		78,864	4,254	13,728	57,569	154,415	0
25-1203	Mts/Bfc Jrny 1	FT	A	LL	Anchorage	2AA	53D / E	12.0		58,146	2,768	2,097	44,189	107,200	0
25-1204	Mts/Bfc Jrny 1	FT	A	LL	Anchorage	2AA	53F	12.0		60,184	3,264	10,852	48,653	122,953	0
25-1205	Maint Gen Jrny	FT	A	LL	Anchorage	2AA	54A / B	12.0		48,829	2,637	8,580	43,017	103,063	0
25-1210	Mts/Bfc Jrny 2	FT	A	LL	Kodiak	2DD	51O / P	12.0		89,293	4,831	15,862	62,765	172,751	0
25-1211	Administrative Officer 1	FT	A	SS	Anchorage	200	17B / C	12.0		65,659	928	0	48,829	115,416	0
25-1408	Administrative Assistant 3	FT	A	GP	Fairbanks	203	15A / B	12.0		53,245	1,882	0	41,021	96,148	0
25-1477	Mts/Bfc Jrny 2	FT	A	LL	Fairbanks	2EE	51B / C	12.0		61,347	3,360	11,797	49,525	126,029	0
25-1597	Mts/Pb Jrny 2	FT	A	LL	Fairbanks	2EE	51B / C	12.0		65,424	3,548	11,797	51,211	131,980	0
25-1662	Admn OPS Mgr 1	FT	A	SS	Anchorage	200	22J / K	12.0		106,285	1,502	0	65,632	173,419	50,292
25-1837	Engineering Associate	FT	A	GP	Anchorage	200	21K / L	12.0		101,566	3,589	0	61,006	166,161	0
25-2063	Mts/Bfc Jrny 1	FT	A	LL	Jim River	2JJ	53K / L	12.0		74,652	4,040	13,278	55,640	147,610	0
25-2067	Mts/Bfc Frmn	FT	A	LL	Fairbanks	2EE	50K / L	12.0		82,130	4,446	14,636	59,295	160,507	0

Note: If a position is split, an asterisk (*) will appear in the Split/Count column. If the split position is also counted in the component, two asterisks (**) will appear in this column. [No valid job title] appearing in the Job Class Title indicates that the PCN has an invalid class code or invalid range for the class code effective date of this scenario.

Personal Services Expenditure Detail
Department of Transportation/Public Facilities

Scenario: FY2024 Governor (19867)
Component: Facilities Services (3195)
RDU: Division of Facilities Services (714)

PCN	Job Class Title	Time Status	Retire Code	Barg Unit	Location	Salary Sched	Range / Step	Comp Months	Split / Count	Annual Salaries	COLA	Premium Pay	Annual Benefits	Total Costs	UGF Amount
25-2092	Mts/EI Jrny 2	FT	A	LL	Fairbanks	2EE	51N	12.0		85,867	4,656	15,483	61,191	167,197	0
25-2093	Mts/Pb Jrny 2	FT	A	LL	Fairbanks	2EE	51N / O	12.0		88,944	4,823	16,038	62,693	172,498	0
25-2094	Mts/Bfc Jrny 1	FT	A	LL	Fairbanks	2EE	53B / C	12.0		58,208	3,156	10,496	47,689	119,549	0
25-2095	Mts/Bfc Frmn	FT	A	LL	Fairbanks	2EE	50K / L	12.0		83,576	4,553	15,536	60,265	163,930	0
25-2096	Mts/Bfc Jrny 2	FT	A	LL	Fairbanks	2EE	51J	12.0		74,658	3,677	5,385	52,378	136,098	0
25-2097	Mts/Bfc Jrny 2	FT	A	LL	Fairbanks	2EE	51M	12.0		82,914	4,084	5,980	56,039	149,017	0
25-2099	Mts/Bfc Jrny 1	FT	A	LL	Tazlina	2FF	53L / M	12.0		73,924	3,635	5,203	52,000	134,762	0
25-2100	Mts/Bfc Jrny 1	FT	A	LL	Fairbanks	2EE	53L	12.0		71,164	3,505	5,133	50,829	130,631	0
25-2101	Mts/EI Jrny 2	FT	A	LL	Fairbanks	2EE	51D / E	12.0		69,791	3,438	5,034	50,220	128,483	0
25-2102	Mts/Pb Jrny 2	FT	A	LL	Fairbanks	2EE	51D / E	12.0		69,791	3,438	5,034	50,220	128,483	1,727
25-2103	Mts/Bfc Jrny 2	FT	A	LL	Fairbanks	2EE	51N	12.0		85,867	4,229	6,193	57,349	153,638	0
25-2104	Mts/Bfc Jrny 1	FT	A	LL	Tok	2FF	53L / M	12.0		74,658	3,628	4,308	51,933	134,527	0
25-2106	Env Svc Jrny 2	PT	A	LL	Fort Yukon	2JJ	60N	6.0		28,220	1,390	2,035	17,332	48,977	0
25-2107	Mts/Pb Jrny 2	FT	A	LL	Dalton	2JJ	51B / C	12.0		70,332	3,348	2,536	49,411	125,627	0
25-2108	Mts/Bfc Jrny 1	FT	A	LL	Seven Mile Camp	2JJ	53D / E	12.0		66,243	3,151	2,344	47,640	119,378	0
25-2109	Mts/Bfc Jrny 1	FT	A	LL	Chandalar (Chandler) Camp	2JJ	53F / J	12.0		69,211	3,294	2,489	48,928	123,922	0
25-2110	Building Maintenance Manager	FT	A	SS	Fairbanks	2S4	22C / D	12.0		101,576	1,436	0	63,684	166,696	0
25-2112	Mts/Bfc Jrny 1	FT	A	LL	Sag River	2JJ	53J / K	12.0		71,876	3,420	2,571	50,064	127,931	0
25-2113	Mts/EI Jrny 2	FT	A	LL	Dalton Highway	2JJ	51B / C	12.0		69,639	3,312	2,461	49,093	124,505	0
25-2114	Mts/Bfc Jrny 1	FT	A	LL	Deadhorse	2JJ	53K	12.0		73,639	3,505	2,655	50,828	130,627	0
25-2115	Mts/Bfc Jrny 1	FT	A	LL	Fairbanks	2EE	53M / N	12.0		76,301	3,632	2,751	51,969	134,653	0
25-2116	Division Director - Px	FT	A	XE	Anchorage	N00	27C / D	12.0		118,703	0	0	70,624	189,327	0
25-2121	Administrative Assistant 1	FT	A	GP	Fairbanks	203	12G / J	12.0		53,820	1,902	0	41,259	96,981	0
25-2155	Mts/Bfc Jrny 2	FT	A	LL	Nome	2II	51O	12.0		92,875	4,544	6,029	60,179	163,627	0
25-2156	Maint Gen Jrny	FT	A	LL	Nome	2II	54D / E	12.0		62,471	2,974	2,253	46,042	113,740	0
25-2158	Mts/Bfc Jrny 1	FT	A	LL	Juneau	2AA	53J / K	12.0		64,213	3,074	2,702	46,949	116,938	0
25-2225	Mts/Bfc Jrny 1	FT	A	LL	Valdez	2FF	53E / F	12.0		65,091	3,098	2,347	47,165	117,701	0
25-2228	Maint Gen Jrny	FT	A	LL	Anchorage	2AA	54F / J	12.0		58,645	2,791	2,115	44,403	107,954	0
25-2230	Mts/Bfc Jrny 1	FT	A	LL	Valdez	2FF	53K / L	12.0		71,229	3,388	2,514	49,773	126,904	0
25-2233	Mts/Bfc Jrny 1	FT	A	LL	Nome	2II	53Q / R	12.0		91,710	4,365	3,307	58,572	157,954	0
25-2234	Mts/Bfc Jrny 2	FT	A	LL	Tok	2FF	51B / C	12.0		66,402	3,161	2,394	47,727	119,684	0
25-2235	Maint Gen Jrny	FT	A	LL	Tok	2FF	54E / F	12.0		60,714	2,888	2,146	45,272	111,020	0
25-2236	Maint Gen Jrny	FT	A	LL	Tazlina	2FF	54K / L	12.0		66,138	3,147	2,371	47,608	119,264	0

Note: If a position is split, an asterisk (*) will appear in the Split/Count column. If the split position is also counted in the component, two asterisks (**) will appear in this column. [No valid job title] appearing in the Job Class Title indicates that the PCN has an invalid class code or invalid range for the class code effective date of this scenario.

Personal Services Expenditure Detail
Department of Transportation/Public Facilities

Scenario: FY2024 Governor (19867)
Component: Facilities Services (3195)
RDU: Division of Facilities Services (714)

PCN	Job Class Title	Time Status	Retire Code	Barg Unit	Location	Salary Sched	Range / Step	Comp Months	Split / Count	Annual Salaries	COLA	Premium Pay	Annual Benefits	Total Costs	UGF Amount
25-2426	Mts/Bfc Jrny 2	FT	A	LL	Fairbanks	2EE	51B / C	12.0		65,424	3,114	2,359	47,308	118,205	0
25-2434	Mt/Gen Sub 1	PT	A	LL	Juneau	2AA	58B / C	9.6		32,641	1,621	2,648	30,014	66,924	0
25-2438	Mts/Bfc Jrny 1	FT	A	LL	Fairbanks	2EE	53B / C	12.0		58,208	2,771	2,099	44,216	107,294	0
25-2447	Mts/Bfc Jrny 2	FT	A	LL	Fairbanks	2EE	51N / O	12.0		86,995	4,139	3,096	56,534	150,764	0
25-2448	Maint Gen Jrny	FT	A	LL	Fairbanks	2EE	54B / C	12.0		54,901	2,613	1,980	42,799	102,293	0
25-2450	Information System Coordinator	FT	A	GP	Anchorage	200	18A / B	12.0		68,523	2,422	0	47,340	118,285	0
25-2451	Mt/Gen Sub 1	PT	A	LL	Juneau	2AA	58B / C	9.6		32,641	1,621	2,648	30,014	66,924	0
25-2454	Mts/Bfc Jrny 1	FT	A	LL	Fairbanks	2EE	53K	12.0		68,731	3,271	2,478	48,725	123,205	0
25-2456	Mts/Bfc Jrny 1	FT	A	LL	Livengood	2HH	53A / B	12.0		58,963	2,804	2,076	44,518	108,361	0
25-2527	Building Maintenance Manager	FT	A	SS	Juneau	205	22B / C	12.0		96,759	1,368	0	61,692	159,819	0
25-2529	Mts/Bfc Jrny 2	FT	A	LL	Tazlina	2FF	51P / Q	12.0		96,410	4,589	3,477	60,586	165,062	165,062
25-2532	Mts/Bfc Jrny 2	FT	A	LL	Juneau	2AA	51C / D	12.0		63,636	3,219	6,426	48,250	121,531	0
25-2534	Maint Gen Jrny	FT	A	LL	Juneau	2AA	54B / C	12.0		50,971	2,426	1,838	41,114	96,349	0
25-2535	Maint Gen Jrny	FT	A	LL	Juneau	2AA	54K / L	12.0		61,040	2,986	3,950	46,152	114,128	0
25-2536	Maint Gen Jrny	FT	A	LL	Juneau	2AA	54A / B	12.0		49,245	2,458	4,262	41,403	97,368	0
25-2538	Mt/Gen Sub 1	PT	A	LL	Juneau	2AA	58A / B	9.6		31,543	1,580	2,844	29,641	65,608	38,053
25-2539	Mts/EI Jrny 2	FT	A	LL	Juneau	2AA	51B / C	12.0		61,494	2,927	2,217	45,623	112,261	0
25-2540	Mts/Bfc Jrny 2	FT	A	LL	Juneau	2AA	51F / J	12.0		70,407	3,348	2,458	49,410	125,623	0
25-2541	Maint Gen Jrny	FT	A	LL	Juneau	2AA	54C / D	12.0		52,759	2,597	3,767	42,652	101,775	0
25-2543	Mts/Bfc Frmn	FT	A	LL	Juneau	2AA	50K / L	12.0		74,998	3,676	5,013	52,365	136,052	0
25-2544	Maint Gen Jrny	FT	A	LL	Juneau	2AA	54O	12.0		70,519	3,450	4,577	50,332	128,878	0
25-2545	Maint Gen Jrny	FT	A	LL	Juneau	2AA	54N	12.0		67,961	3,438	6,862	50,219	128,480	0
25-2547	Mts/Bfc Jrny 2	FT	A	LL	Ketchikan	2AA	51E / F	12.0		68,169	3,245	2,458	48,484	122,356	0
25-3348	Mts/Pb Jrny 2	FT	A	LL	Anchorage	2AA	51L / M	12.0		78,983	3,759	2,848	53,118	138,708	0
25-3477	Mts/Bfc Jrny 1	FT	A	LL	Anchorage	2AA	53B / C	12.0		53,942	2,565	1,891	42,365	100,763	0
25-3539	Engineer/Architect 2	FT	A	GP	Anchorage	200	23B / C	12.0		92,898	3,283	0	57,421	153,602	0
25-3540	Engineer/Architect 3	FT	A	SS	Juneau	205	25L / M	12.0		148,762	2,103	0	83,201	234,066	0
25-3582	Mts/Bfc Jrny 1	FT	A	LL	Anchorage	2AA	53N	12.0		72,370	3,445	2,610	50,284	128,709	0
25-3653	Division Operations Manager	FT	A	SS	Anchorage	200	24B / C	12.0		106,059	1,499	0	65,539	173,097	0
25-3678	Administrative Assistant 1	FT	A	GP	Anchorage	200	12D / E	12.0		50,014	1,767	0	39,684	91,465	0
25-3685	Mt/Gen Sub 1	PT	A	LL	Anchorage	2AA	58E / F	6.0		22,370	1,100	1,576	14,722	39,768	39,768
25-3735	Engineering Assistant 2	FT	A	GP	Anchorage	200	19D / E	12.0		75,102	2,654	0	50,061	127,817	0
25-3777	Maint Gen Jrny	FT	A	LL	Anchorage	2AA	54C / D	12.0		52,759	2,511	1,902	41,880	99,052	0
25-3778	Mts/EI Jrny 2	FT	A	LL	Anchorage	2AA	51B / C	12.0		61,494	2,927	2,217	45,623	112,261	0
25-3779	Engineer/Architect 3	FT	A	GP	Fairbanks	203	25G	12.0		126,750	4,479	0	71,422	202,651	0
25-3780	Mts/Pb Jrny 2	FT	A	LL	Fairbanks	2EE	51B / C	12.0		65,424	3,114	2,359	47,308	118,205	0

Note: If a position is split, an asterisk (*) will appear in the Split/Count column. If the split position is also counted in the component, two asterisks (**) will appear in this column. [No valid job title] appearing in the Job Class Title indicates that the PCN has an invalid class code or invalid range for the class code effective date of this scenario.

Personal Services Expenditure Detail
Department of Transportation/Public Facilities

Scenario: FY2024 Governor (19867)
Component: Facilities Services (3195)
RDU: Division of Facilities Services (714)

PCN	Job Class Title	Time Status	Retire Code	Barg Unit	Location	Salary Sched	Range / Step	Comp Months	Split / Count	Annual Salaries	COLA	Premium Pay	Annual Benefits	Total Costs	UGF Amount
25-3795	Engineer/Architect 3	FT	A	SS	Anchorage	200	25F / J	12.0		130,437	1,844	0	75,621	207,902	0
25-3796	Engineer/Architect 2	FT	A	GP	Fairbanks	203	23C / D	12.0		99,275	3,508	0	60,059	162,842	0
25-3798	Mts/Bfc Jrny 1	FT	A	LL	Nome	2II	53J	12.0		70,311	3,347	2,535	49,402	125,595	0
25-3827	Mts/Bfc Jrny 2	FT	A	LL	Anchorage	2AA	51L / M	12.0		78,983	3,759	2,848	53,118	138,708	0
25-IN0947	College Intern 4	NP	N	EE	Anchorage	N00	12B / C	8.0		29,508	0	0	4,116	33,624	0
Total													Total Salary Costs:	10,763,028	
Positions													Total COLA:	437,058	
Full Time Positions:													Total Premium Pay:	665,020	
Part Time Positions:													Total Benefits:	7,492,803	
Non Permanent Positions:															
Positions in Component:													Total Pre-Vacancy:	19,357,909	
													Minus Vacancy Adjustment of 1.37%:	(264,397)	
													Total Post-Vacancy:	19,093,512	
													Plus Lump Sum Premium Pay:	0	
													Personal Services Line 100:	19,093,512	

PCN Funding Sources:	Pre-Vacancy	Post-Vacancy	Percent
1004 General Fund Receipts	521,523	514,400	2.69%
1007 Interagency Receipts	10,096,716	9,958,812	52.16%
1039 U/A Indirect Cost Recovery	3,248,848	3,204,474	16.78%
1061 Capital Improvement Project Receipts	3,689,185	3,638,797	19.06%
1147 Public Building Fund	1,801,636	1,777,029	9.31%
Total PCN Funding:	19,357,909	19,093,512	100.00%

Note: If a position is split, an asterisk (*) will appear in the Split/Count column. If the split position is also counted in the component, two asterisks (**) will appear in this column. [No valid job title] appearing in the Job Class Title indicates that the PCN has an invalid class code or invalid range for the class code effective date of this scenario.

Department of Transportation & Public Facilities

Facilities Services (3195)

RDU: Division of Facilities Services (714)

FY2024 Governor's Budget

Position Totals: 139 PFT | 5 PPT | 1 NP

Statewide Public Facilities

25-2116
Division Director
R27
Anchorage PFT PX

Energy Program

25-3795
Engineer/Architect 3
R25
Anchorage PFT CL

25-0380
Engineer/Architect 3
R25
Anchorage PFT CL

25-0969
Engineer/Architect 3
R25
Anchorage PFT CL

25-3653
Division Ops Mgr
R24
Anchorage PFT CL

25-3539
Engineer/Architect 2
R23
Anchorage PFT CL

25-3796
Engineer/Architect 2
R23
Fairbanks PFT CL

25-0845
Engineer/Architect 2
R23
Anchorage PFT CL

25-3540
Engineer/Architect 3
R25
Juneau PFT CL

09-0012
Engineer/Architect 2
R23
Anchorage PFT CL

25-0453
Eng Associate
R21
Anchorage PFT CL

Continued on pg 3-5

25-0463
Eng Assistant 3
R21
Anchorage PFT CL

25-0837
Eng Assistant 1
R17
Fairbanks PFT CL

25-0462
Eng Associate
R21
Anchorage PFT CL

25-0703
Eng Assistant 1/2
R17/19
Juneau PFT CL

25-0961
Engineer/Architect 2
R23
Anchorage PFT CL

25-1837
Eng Associate
R21
Anchorage PFT CL

25-1662
Admin Ops Mgr 1
R22
Anchorage PFT CL

Continued on page 2

25-3735
Eng Assistant 2
R19
Anchorage PFT CL

25-0420
Eng Assistant 3
R21
Fairbanks PFT CL

25-0673
Engineer/Architect 2
R23
Anchorage PFT CL

02-5178
Facilities Mgr 2
R21
Juneau PFT CL

25-0464
Eng Assistant 3
R21
Anchorage PFT CL

25-0443
Engineer/Architect 3
R25
Anchorage PFT CL

02-5160
St LSe&Fac Mgr
R25
Anchorage PFT PX

Continued on page 7

25-3779
Engineer/Architect 3
R25
Fairbanks PFT CL

25-IN0947
College Intern 4
R12
Anchorage NP CL

25-0529
Eng Assistant 1/2
R17/19
Anchorage PFT CL

25-0466
Engineer/Architect 1
R22
Anchorage PFT CL

Department of Transportation & Public Facilities

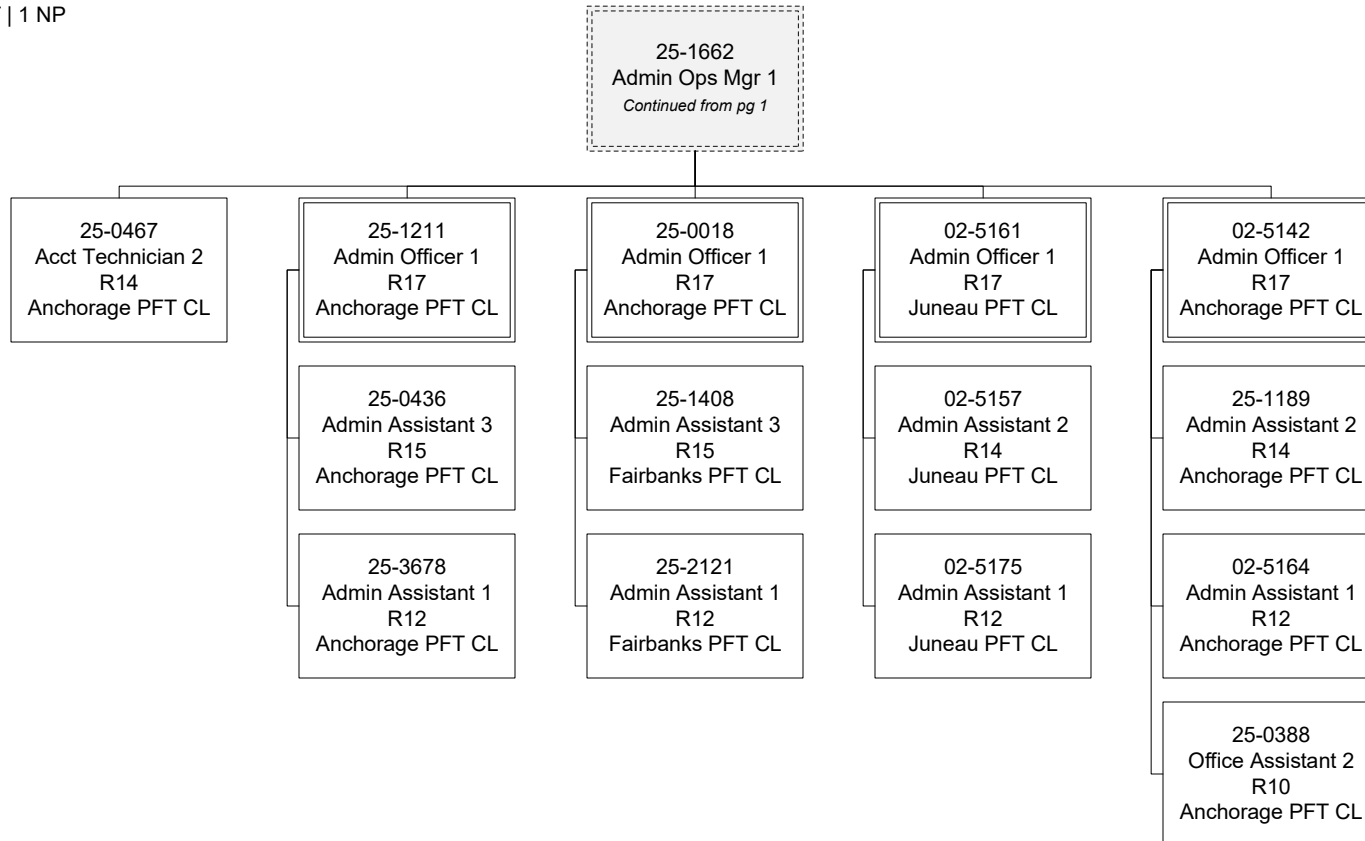
Facilities Services (3195)

RDU: Division of Facilities Services (714)

FY2024 Governor's Budget

Position Totals: 139 PFT | 5 PPT | 1 NP

Administrative Services



Department of Transportation & Public Facilities

Facilities Services (3195)

RDU: Division of Facilities Services (714)

FY2024 Governor's Budget

Position Totals: 139 PFT | 5 PPT | 1 NP

Anchorage Maintenance & Operations Section

25-3653
Division Ops Mgr
Continued from pg 1

25-2450
Info System
Coordinator
R18
Anchorage PFT CL

25-1186
Building
Maintenance Mgr
R22
Anchorage PFT CL

02-5061
Facilities Mgr 2
R21
Anchorage PFT CL

25-1200
Mts/Bfc Frmn
WG50
Anchorage PFT CL

25-0011
Project Assistant
R16
Anchorage PFT CL

05-8435
Mts/Bfc Frmn
WG50
Seward PFT CL

20-1070
Admin Assistant 1
R12
Anchorage PFT CL

25-3827
Mts/Bfc Jrny 2
WG51
Anchorage PFT CL

25-1191
Mts/Bfc Jrny 2
WG51
Anchorage PFT CL

25-1196
Mts/Bfc Jrny 2
WG51
Kenai PFT CL

Mts/Bfc Jrny 2
WG51 PFT CL
25-1198 Anchorage
25-1201 Anchorage
25-0764 Bethel
25-1195 Palmer

05-8389
Mts/Pb Jrny 2
WG51
Seward PFT CL

25-1040
Mts/Bfc Jrny 1
WG53
Anchorage PFT CL

Maint Gen Jrny
WG54
25-2228 25-1205
Anchorage PFT CL

Mts/Bfc Jrny 1
WG53
25-0354 25-0588
25-1192 25-1203
25-1204 25-3477
25-3582
Anchorage PFT CL

25-1199
Mts/Bfc Jrny 1
WG53
Kenai PFT CL

05-8519
Mts/Eu Jrny 2
WG51
Seward PFT CL

25-3777
Maint Gen Jrny
WG54
Anchorage PFT CL

25-1190
Mt/Gen Sub 2
WG56
Anchorage PFT CL

Mts/EI Jrny 2
WG51
25-1193 25-1194
25-3778
Anchorage PFT CL

05-8653
Mts/Bfc Jrny 2
WG51
Seward PFT CL

25-3685
Mt/Gen Sub 1
WG58
Anchorage PPT CL

Mts/Pb Jrny 2
WG51
25-1202 25-3348
Anchorage PFT CL

07-4554
Maint Gen Jrny
WG54
Seward PFT CL

Department of Transportation & Public Facilities

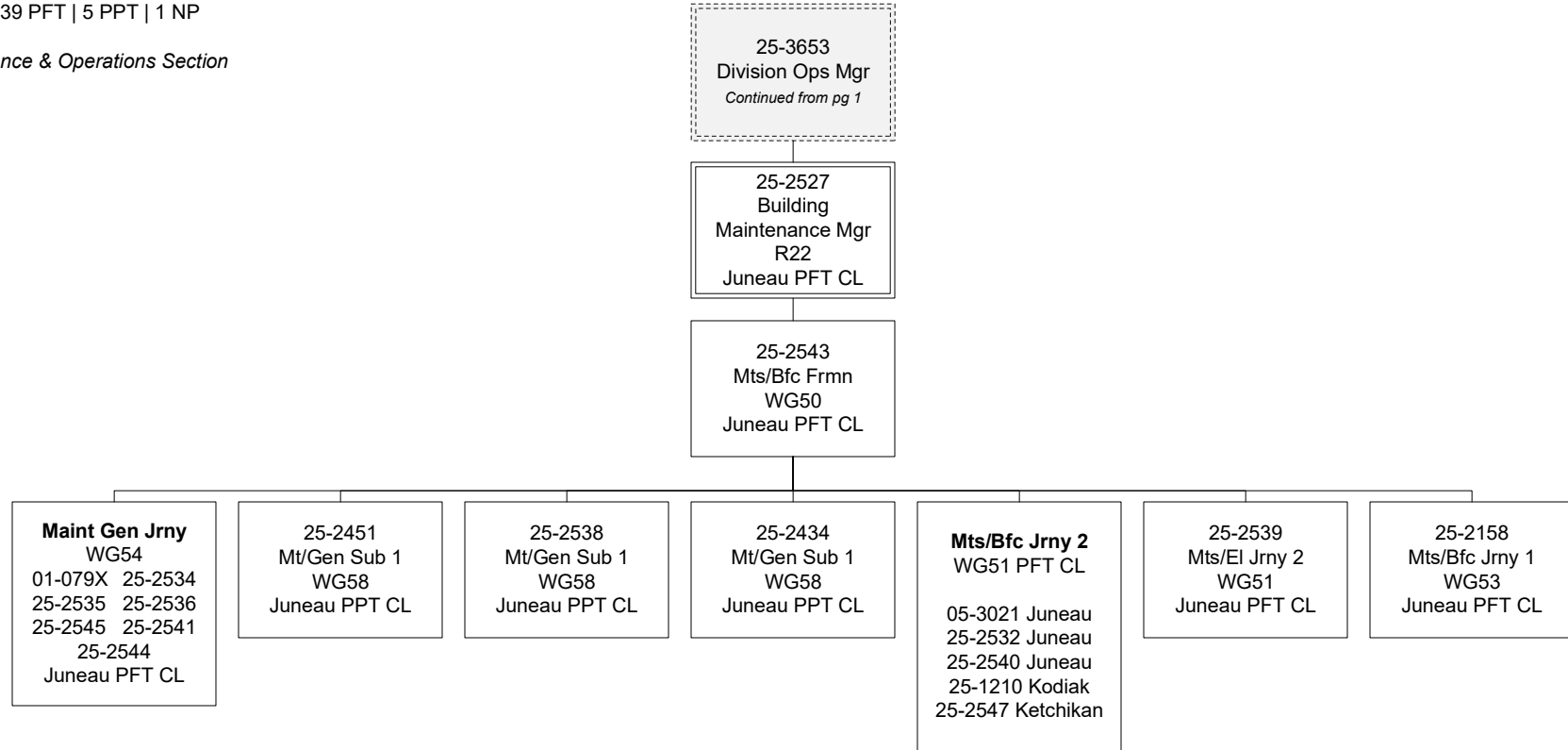
Facilities Services (3195)

RDU: Division of Facilities Services (714)

FY2024 Governor's Budget

Position Totals: 139 PFT | 5 PPT | 1 NP

Juneau Maintenance & Operations Section



Department of Transportation & Public Facilities

Facilities Services (3195)

RDU: Division of Facilities Services (714)

FY2024 Governor's Budget

Position Totals: 139 PFT | 5 PPT | 1 NP

Fairbanks Maintenance & Operations Section

25-3653
Division Ops Mgr
Continued from pg 1

25-2110
Building
Maintenance Mgr
R22
Fairbanks PFT CL

25-2095
Mts/Bfc Frmn
WG50
Fairbanks PFT CL

Continued on pg 6

25-2529
Mts/Bfc Jrny 2
WG51
Tazlina PFT CL

25-2099
Mts/Bfc Jrny 1
WG53
Tazlina PFT CL

25-2236
Maint Gen Jrny
WG54
Tazlina PFT CL

25-2231
Mt/Gen Sub 2
WG56
Tazlina PFT CL

06-6005
Mts/Bfc Jrny 2
WG51
Valdez PFT CL

Mts/Bfc Jrny 1
WG53
25-2230 25-2225
Valdez PFT CL

25-2234
Mts/Bfc Jrny 2
WG51
Tok PFT CL

25-2235
Maint Gen Jrny
WG54
Tok PFT CL

25-2104
Mts/Bfc Jrny 1
WG53
Tok PFT CL

25-3780
Mts/Pb Jrny 2
WG51
Fairbanks PFT CL

25-2426
Mts/Bfc Jrny 2
WG51
Fairbanks PFT CL

25-2067
Mts/Bfc Frmn
WG50
Fairbanks PFT CL

Continued on pg 6

25-2155
Mts/Bfc Jrny 2
WG51
Nome PFT CL

Department of Transportation & Public Facilities

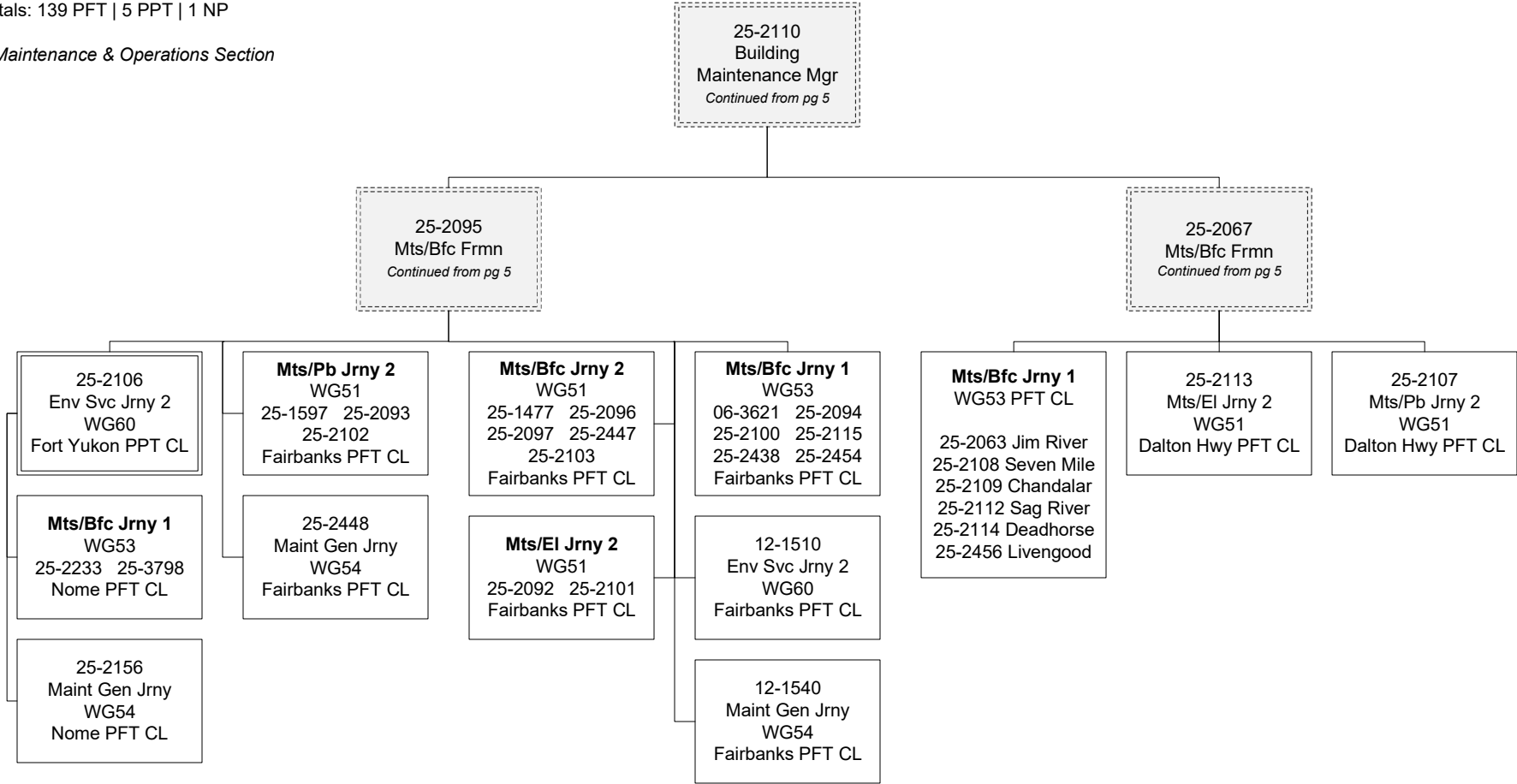
Facilities Services (3195)

RDU: Division of Facilities Services (714)

FY2024 Governor's Budget

Position Totals: 139 PFT | 5 PPT | 1 NP

Fairbanks Maintenance & Operations Section



Department of Transportation & Public Facilities

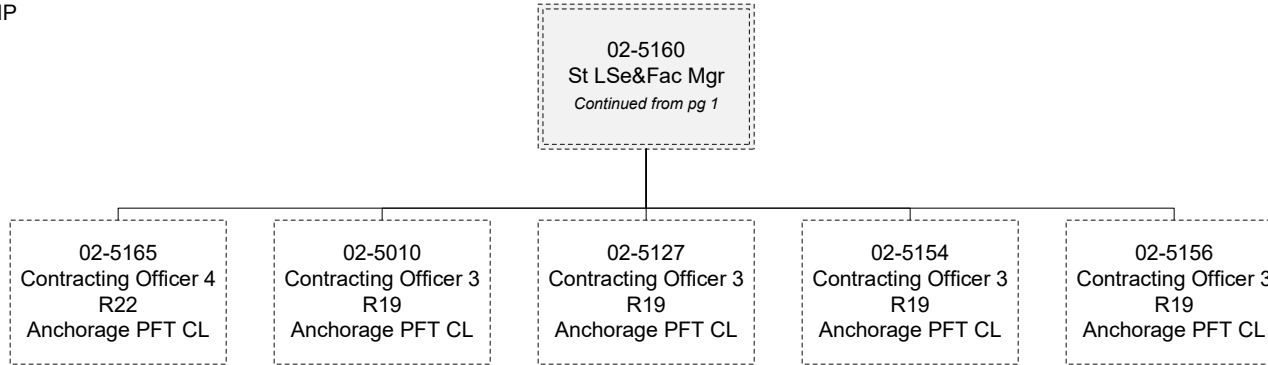
Facilities Services (3195)

RDU: Division of Facilities Services (714)

FY2024 Governor's Budget

Position Totals: 139 PFT | 5 PPT | 1 NP

Leasing



Positions counted in and split
with Leases component