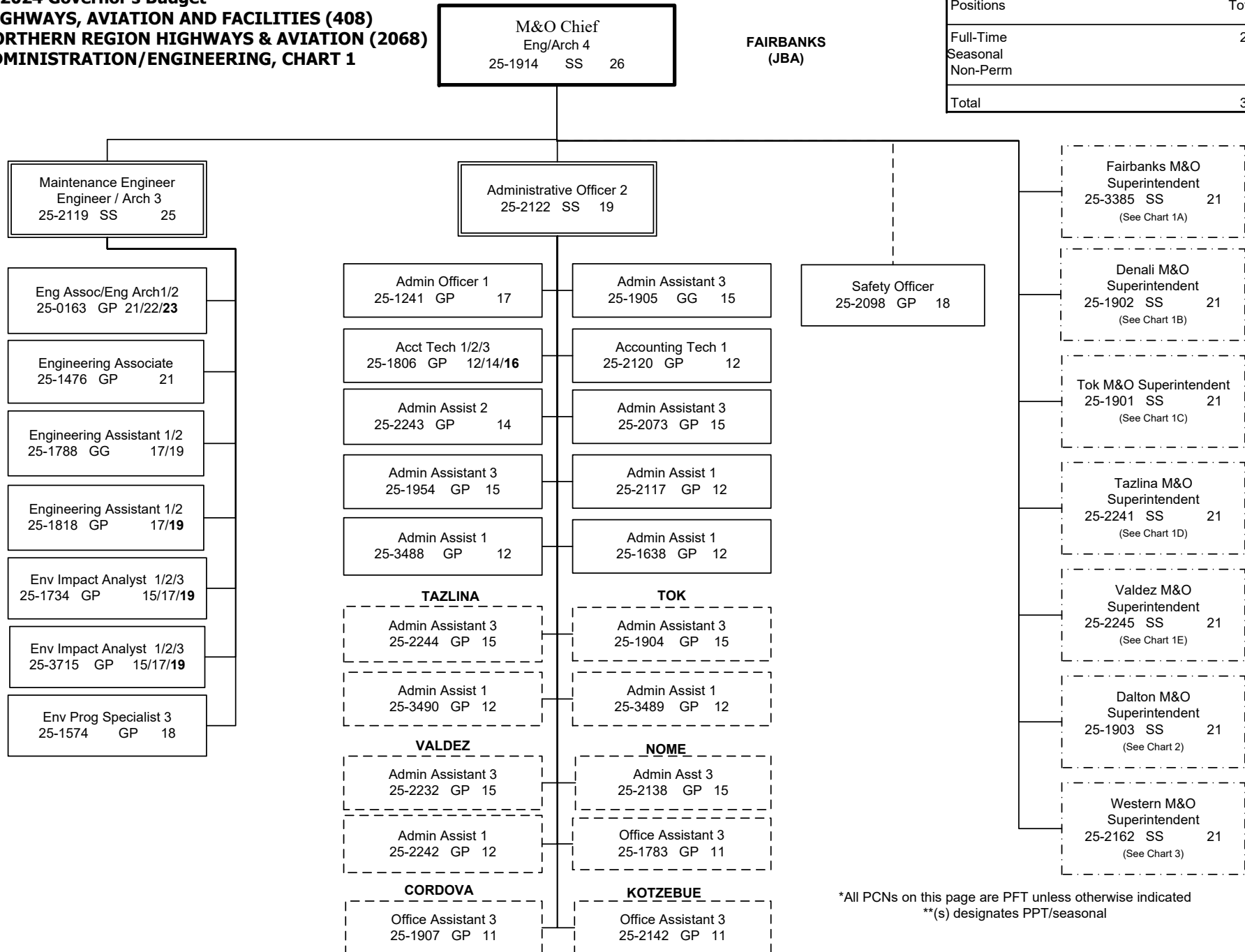


**FY2024 Governor's Budget  
HIGHWAYS, AVIATION AND FACILITIES (408)  
NORTHERN REGION HIGHWAYS & AVIATION (2068)  
ADMINISTRATION/ENGINEERING, CHART 1**

NORTHERN REGION HIGHWAYS & AVIATION	
Positions	Total
Full-Time	258
Seasonal	51
Non-Perm	20
<b>Total</b>	<b>329</b>

**FAIRBANKS  
(JBA)**



\*All PCNs on this page are PFT unless otherwise indicated  
\*\*(s) designates PPT/seasonal

**FY2024 Governor's Budget  
HIGHWAYS, AVIATION AND FACILITIES (408)  
NORTHERN REGION HIGHWAYS & AVIATION (2068)  
FAIRBANKS DISTRICT, CHART 1A**

**FAIRBANKS  
(JBA)**

Eng/Arch 4  
25-1914 SS 26

Fairbanks M&O Superintendent  
25-3385 SS 21

Equipment Operator (F2)  
25-1919 LL 50

Admin Assistant 3  
25-1905 GG 15

Accounting Tech 1  
25-2120 GP 12

Admin Assist 1  
25-1679 GP 12

Stock & Part Svcs 3  
25-1225 LL 54

**KEY:**  
  
F1 – Foremen I  
F2 – Foremen II  
J1 – Journey I  
J2 – Journey II  
J3/L – Journey III/Lead  
SJ1 – Sub-Journey I  
SJII – Sub-Journey II  
L – Lead  
S – PPT/SACL

**MONTANA CREEK  
(JME)**

Equipment Operator (F1)  
25-1927 LL 51

Equipment Operator (F1)  
25-1920 LL 51

Equipment Operator (F1)  
25-1929 LL 51

Equipment Operator (F1)  
25-1915 LL 51

Equipment Operator (SJ1)  
25-1940(s) LL 58

Equipment Operator (J1/J2)  
25-1934 LL 54/53

Equipment Operator (J2)  
25-1458 LL 53

Equipment Operator (J2)  
25-1931 LL 53

Equipment Operator (J2)  
25-1924 LL 53

Equipment Operator (J2)  
25-1926 LL 53

Equipment Operator (SJ1)  
25-2074(s) LL 58

Equipment Operator (J1/J2)  
25-1964 LL 54/53

Equipment Operator (J2)  
25-1917 LL 53

Equipment Operator (J2)  
25-1936 LL 53

Equipment Operator (J2)  
25-1935 LL 53

Equipment Operator (J2)  
25-1937 LL 53

Equipment Operator (SJ1)  
25-N09042 LL 58

Equipment Operator (J1/J2)  
25-2049 LL 54/53

Equipment Operator (J2)  
25-1930 LL 53

Equipment Operator (J2)  
25-1941 LL 53

Equipment Operator (J2)  
25-1989 LL 53

Equipment Operator (J2)  
25-1979 LL 53

Equipment Operator (SJ1)  
25-N09043 LL 58

Equipment Operator (J1/J2)  
25-3673 LL 54/53

Equipment Operator (J2)  
25-2071 LL 53

Equipment Operator (J2)  
25-1943 LL 53

Equipment Operator (J1)  
25-1918 LL 54

Equipment Operator (J2)  
25-3663 LL 53

Equipment Operator (SJ1)  
25-N09044 LL 58

Equipment Operator (J1/J2)  
25-3675 LL 54/53

Equipment Operator (J1)  
25-1933 LL 54

Equipment Operator (J2)  
25-1986 LL 53

Equipment Operator (J1)  
25-1928 LL 54

Equipment Operator (J1)  
25-1944 LL 54

**TRAFFIC**  
Maint Spec TCES(F1)  
25-2075 LL 50

Equipment Operator (J3)  
25-#112 LL 52

Equipment Operator (J1)  
25-1562 LL 54

Equipment Operator (J2)  
25-3437 LL 53

Equipment Operator (J1)  
25-1946 LL 54

Equipment Operator (J1)  
25-2072 LL 54

Maint Spec TCES (J2)  
25-1916 LL 51

Equipment Operator (J3)  
25-#110 LL 52

Equipment Operator (J1)  
25-2077 LL 54

Equipment Operator (J1)  
25-2022 LL 54

Equipment Operator (J1)  
25-1996 LL 54

Equipment Operator (J1)  
25-2079 LL 54

Maint Spec TCES (J2)  
25-1968 LL 51

Equipment Operator (J3)  
25-#111 LL 52

Equipment Operator (J1)  
25-2081 LL 54

Equip Operator (SJ2/J1)  
25-2017 LL 56/54

Equip Operator (SJ2/J1)  
25-1681 LL 56/54

Equipment Operator (J1)  
25-1973(s) LL 54

**CENTAL  
(JMB)**  
Equipment Operator (J3/L)  
25-3676 LL 52

**BIRCH LAKE  
(JJD)**  
Equipment Operator (J3/L)  
25-3864 LL 52

**SIGNS**

Equipment Operator (J2)  
25-2088 LL 53

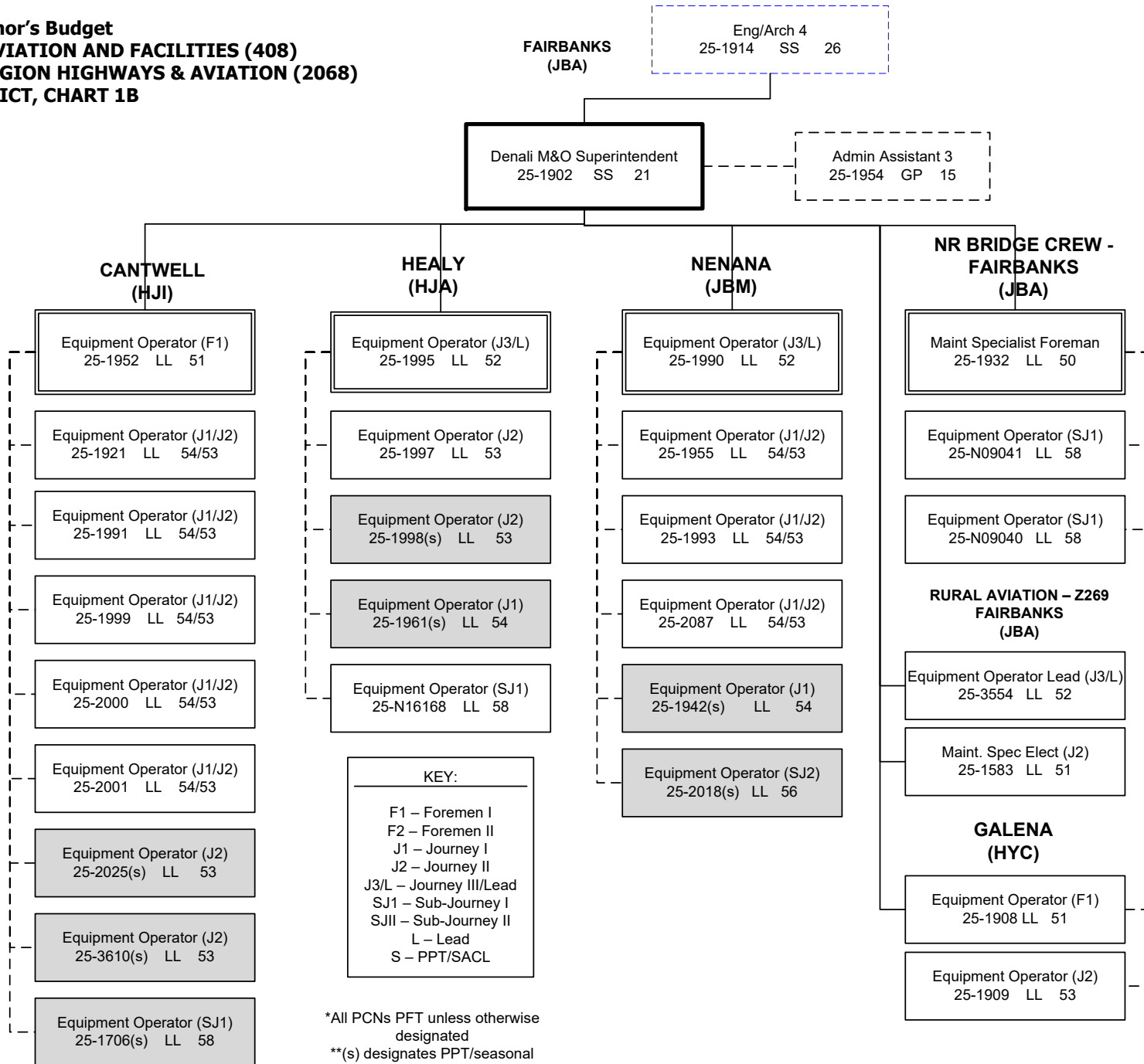
Equipment Operator (J2)  
25-1670 LL 53

Equipment Operator (J1/J2)  
25-3865 LL 54/53

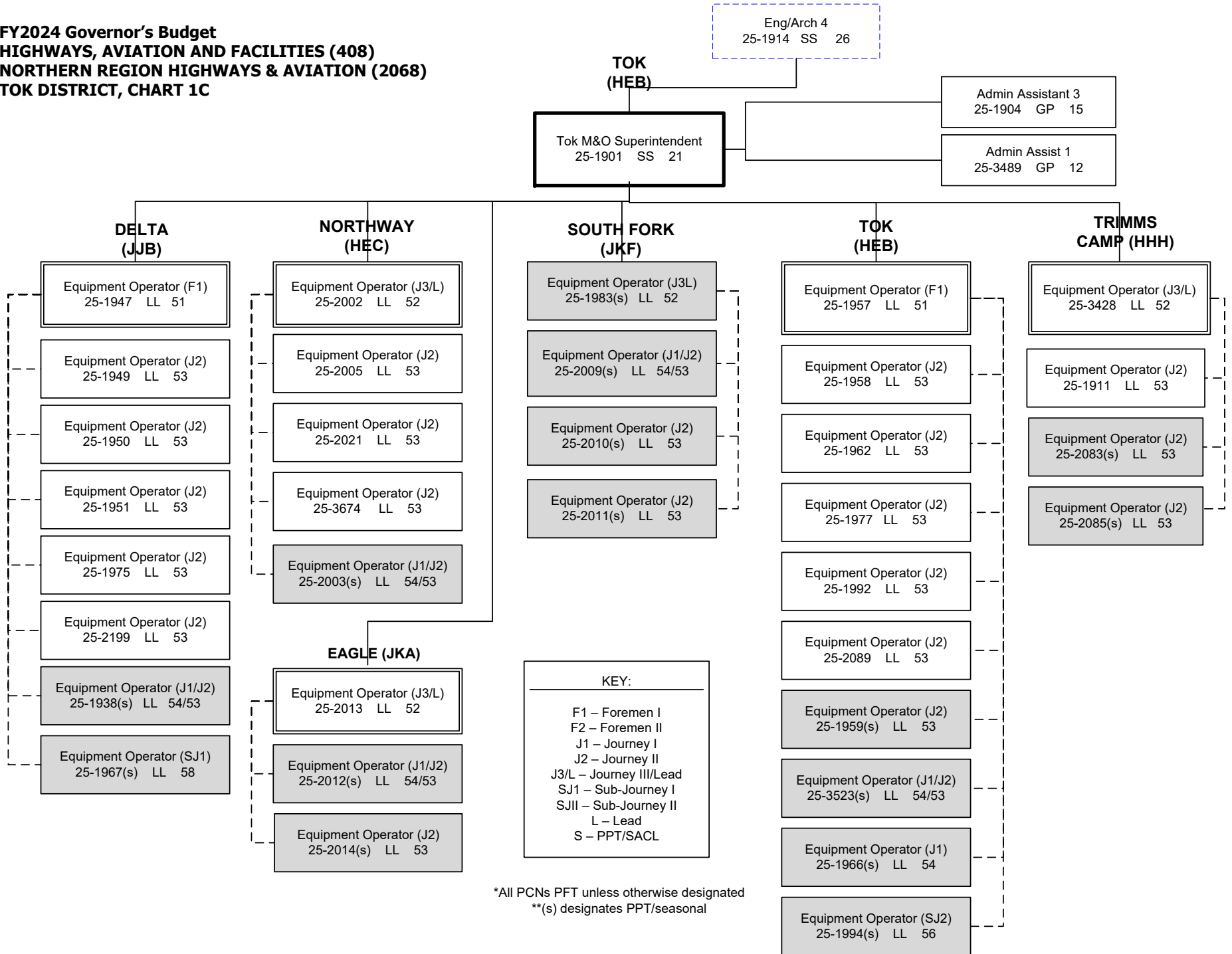
Equipment Operator (J2)  
25-1948 LL 53

\*All PCNs are PFT unless otherwise designated  
\*\*(s) Designates PPT/seasonal position  
All positions are located in Fairbanks unless otherwise indicated

**FY2024 Governor's Budget  
HIGHWAYS, AVIATION AND FACILITIES (408)  
NORTHERN REGION HIGHWAYS & AVIATION (2068)  
DENALI DISTRICT, CHART 1B**

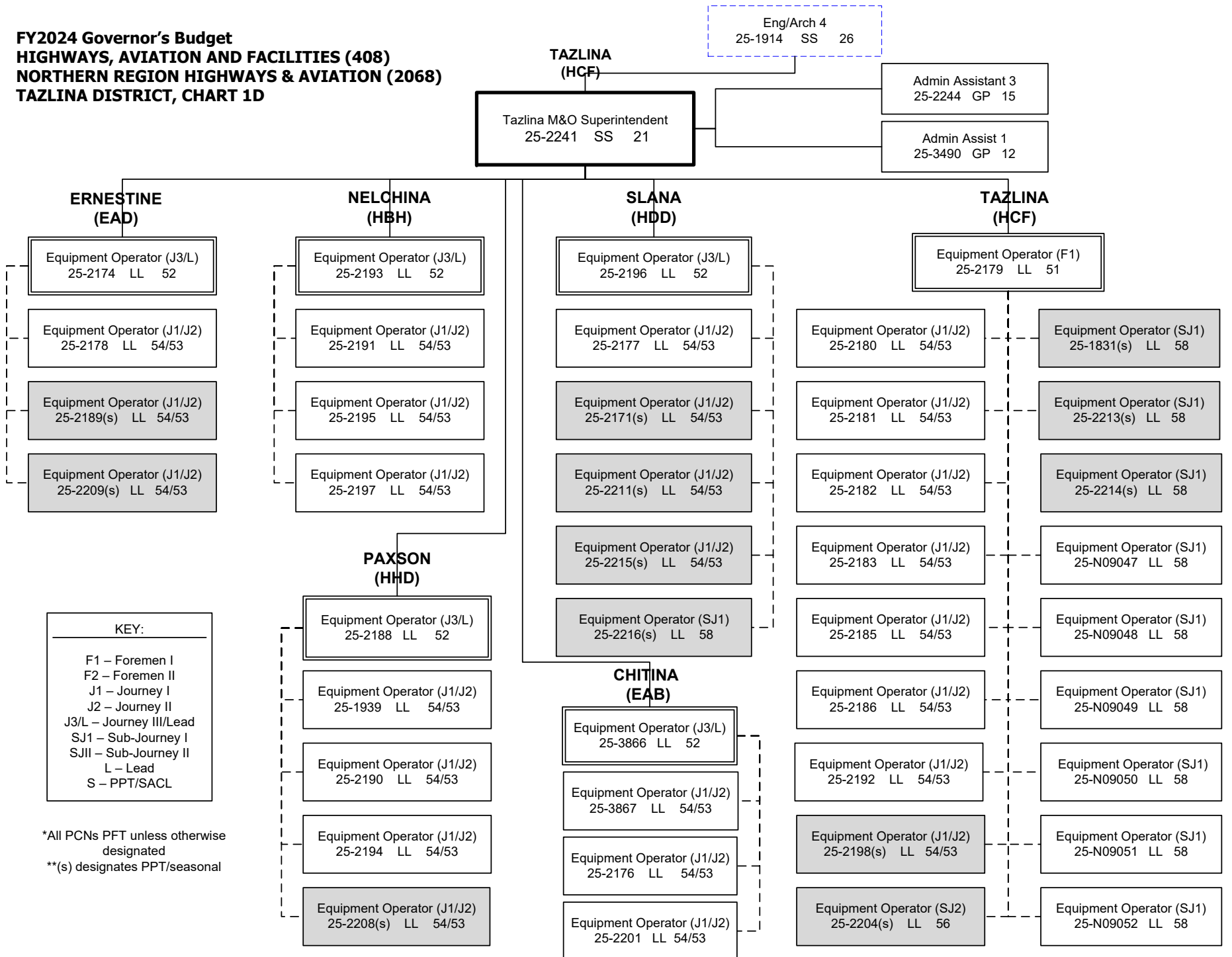


**FY2024 Governor's Budget  
HIGHWAYS, AVIATION AND FACILITIES (408)  
NORTHERN REGION HIGHWAYS & AVIATION (2068)  
TOK DISTRICT, CHART 1C**

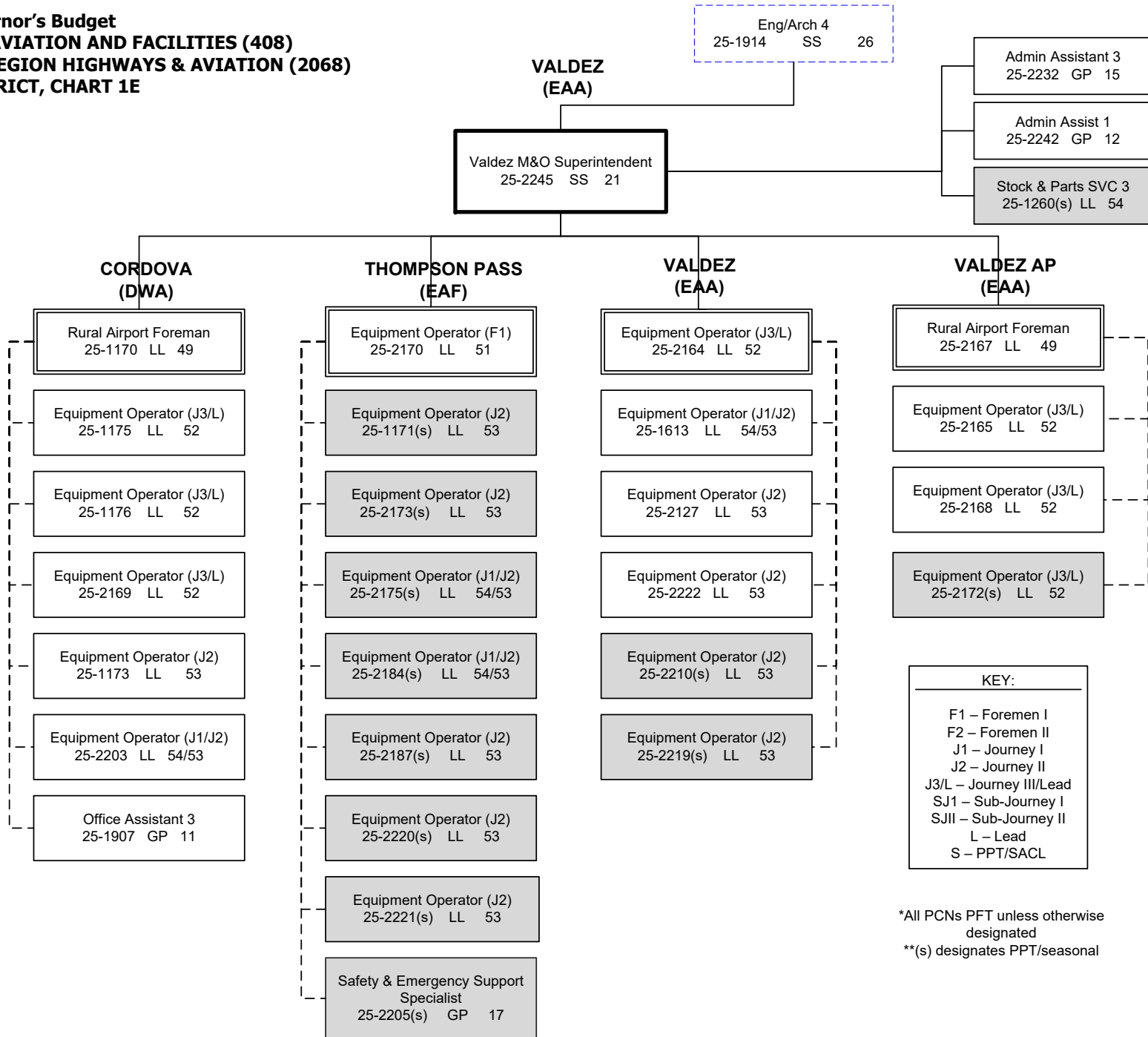


\*All PCNs PFT unless otherwise designated  
\*\*(s) designates PPT/seasonal

**FY2024 Governor's Budget  
HIGHWAYS, AVIATION AND FACILITIES (408)  
NORTHERN REGION HIGHWAYS & AVIATION (2068)  
TAZLINA DISTRICT, CHART 1D**



**FY2024 Governor's Budget  
HIGHWAYS, AVIATION AND FACILITIES (408)  
NORTHERN REGION HIGHWAYS & AVIATION (2068)  
VALDEZ DISTRICT, CHART 1E**



\*All PCNs PFT unless otherwise designated  
\*\*(s) designates PPT/seasonal

**FY2024 Governor's Budget  
HIGHWAYS, AVIATION AND FACILITIES (408)  
NORTHERN REGION HIGHWAYS & AVIATION (2068)  
DALTON DISTRICT, CHART 2**

Eng/Arch 4  
25-1914 SS 26

FAIRBANKS  
(JBA)

Dalton M&O Superintendent  
25-1903 SS 21

Admin Assistant 3  
25-2073 GP 15  
Admin Assist 1  
25-2117 GP 12  
Admin Assist 1  
25-1638 GP 12

Equip Operator (F1)  
25-2041 LL 51

Equip Operator (F1)  
25-3661 LL 51

**FBKS/DALTON  
ROVING (JCN)**

- Equip Operator (J1/J2)  
25-2026 LL 54/53
- Equip Operator (J1/J2)  
25-2038 LL 54/53
- Equip Operator (J1/J2)  
25-2045 LL 54/53
- Equip Operator (J1/J2)  
25-3662 LL 54/53
- Equip Operator (J1/J2)  
25-3672 LL 54/53
- Equip Operator (SJ2)  
25-N11047 LL 56
- Equip Operator (SJ2)  
25-N11048 LL 56
- Equip Operator (SJ2)  
25-N11049 LL 56
- Equip Operator (SJ2)  
25-N11050 LL 56
- Equip Operator (SJ2)  
25-N11064 LL 56
- Equip Operator (SJ2)  
25-N11065 LL 56
- Equip Operator (SJ2)  
25-N11066 LL 56
- Equip Operator (SJ2)  
25-N11067 LL 56

**LIVENGOOD  
(JQA)**

- Equip Operator(J3/L)  
25-1980 LL 52
- Equip Operator (J1/J2)  
25-1981 LL 54/53
- Equip Operator (J1/J2)  
25-1985 LL 54/53
- Equip Operator (J1/J2)  
25-2008 LL 54/53
- Equip Operator (J1/J2)  
25-2060 LL 54/53
- Equip Operator (J1/J2)  
25-3669 LL 54/53
- Equip Operator (SJ2/J1)  
25-2059 LL 56/54

**JIM RIVER  
(KEE)**

- Equip Operator (J3/L)  
25-2032 LL 52
- Equip Operator (J1/J2)  
25-2053 LL 54/53
- Equip Operator (J1/J2)  
25-2058 LL 54/53
- Equip Operator (J1/J2)  
25-2066 LL 54/53
- Equip Operator (SJ2/J1)  
25-2055 LL 56/54

**MANLEY (JRC)**

- Equip Operator (J3/L)  
25-1982 LL 52
- Equip Operator (J1/J2)  
25-1960 LL 54/53
- Equip Operator (J1/J2)  
25-1969 LL 54/53
- Equip Operator (J1/J2)  
25-1971 LL 54/53
- Equip Operator (SJ2/J1)  
25-2050 LL 56/54

**COLDFOOT  
(KRB)**

- Equip Operator (J3/L)  
25-2034 LL 52
- Equip Operator (J1/J2)  
25-2042 LL 54/53
- Equip Operator (J1/J2)  
25-3668 LL 54/53
- Equip Operator (SJ2/J1)  
25-2069 LL 56/54
- Equip Operator (J1/J2)  
25-2086(s) LL 54/53

**SEVEN MILE  
(JQG)**

- Equip Operator (J3/L)  
25-2030 LL 52
- Equip Operator (J1/J2)  
25-2031 LL 54/53
- Equip Operator (J1/J2)  
25-2065 LL 54/53
- Equip Operator (J1/J2)  
25-2091 LL 54/53

**CHANDALAR  
(LEA)**

- Equip Operator (J3/L)  
25-2028 LL 52
- Equip Operator (J1/J2)  
25-2051 LL 54/53
- Equip Operator (J1/J2)  
25-2062 LL 54/53
- Equip Operator (J1/J2)  
25-2070 LL 54/53
- Equip Operator (J1/J2)  
25-2090 LL 54/53
- Equip Operator (J1/J2)  
25-3664 LL 54/53
- Equip Operator (J1/J2)  
25-2036(s) LL 54/53
- Equip Operator (SJ2/J1)  
25-2019 LL 56/54

**SAG RIVER  
(LED)**

- Equip Operator (J3/L)  
25-2029 LL 52
- Equip Operator (J1/J2)  
25-2035 LL 54/53
- Equip Operator (J1/J2)  
25-2040 LL 54/53
- Equip Operator (J1/J2)  
25-2057 LL 54/53
- Equip Operator (SJ2/J1)  
25-2080 LL 56/54
- Equip Operator (SJ2/J1)  
25-2206 LL 56/54

**KEY:**

- F1 – Foremen I
- F2 – Foremen II
- J1 – Journey I
- J2 – Journey II
- J3/L – Journey III/Lead
- SJ1 – Sub-Journey I
- SJII – Sub-Journey II
- L – Lead
- S – PPT/SACL

\*All PCNs PFT unless otherwise designated

\*\* (s) designates PPT/seasonal

**FY2024 Governor's Budget  
 HIGHWAYS, AVIATION AND FACILITIES (408)  
 NORTHERN REGION HIGHWAYS & AVIATION (2068)  
 DALTON DISTRICT, CHART 2B**

FAIRBANKS  
(JBA)

Dalton M&O Superintendent  
25-1903 SS 21

**UTQIAGVIK  
(MEA)**

**DEADHORSE  
(MBC)**

Rural Airport Foreman  
25-3665 LL 49

Rural Airport Foreman  
25-2023 LL 49

(Work alternate  
workweeks)

Equip Op Foreman II  
25-3660 LL 50

Equip Op (J3/L)  
25-3356 LL 52

Maint Spec Electrician (J2)  
25-2006 LL 51

Equipment Operator (J3/L)  
25-2044 LL 52

(Work alternate  
workweeks)

Equip Op Foreman II  
25-2061 LL 50

Equip Op Foreman II  
25-3671 LL 50

Maint Spec Electrician (J2)  
25-2056 LL 51

Equipment Operator(J3/L)  
25-2046 LL 52

Equipment Operator (J3/L)  
25-1965 LL 52

Equipment Operator (J3/L)  
25-2047 LL 52

Equipment Operator (J3/L)  
25-2043 LL 52

Equipment Operator (J3/L)  
25-2064 LL 52

Equipment Operator (J3/L)  
25-2048 LL 52

Equipment Operator (J1/J2/J3)  
25-3670 LL 54/53/52

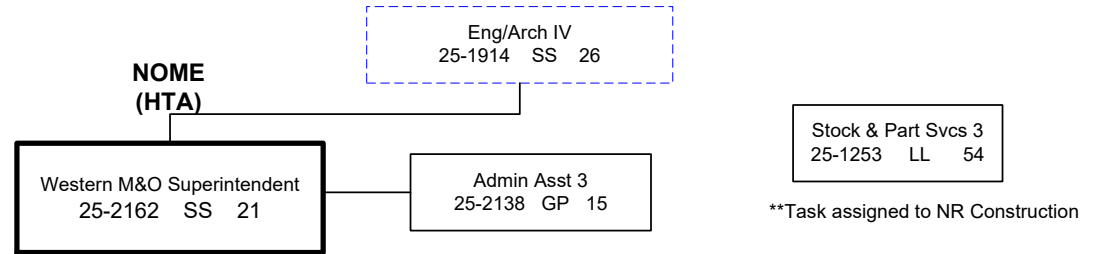
Equipment Operator (J3/L)  
25-2068 LL 52

**KEY:**  
 F1 – Foremen I  
 F2 – Foremen II  
 J1 – Journey I  
 J2 – Journey II  
 J3/L – Journey III/Lead  
 SJ1 – Sub-Journey I  
 SJII – Sub-Journey II  
 L – Lead  
 S – PPT/SACL

\*All PCNs PFT unless otherwise  
designated



**FY2024 Governor's Budget  
HIGHWAYS, AVIATION AND FACILITIES (408)  
NORTHERN REGION HIGHWAYS & AVIATION (2068)  
WESTERN DISTRICT, CHART 3**



\*\*Task assigned to NR Construction

