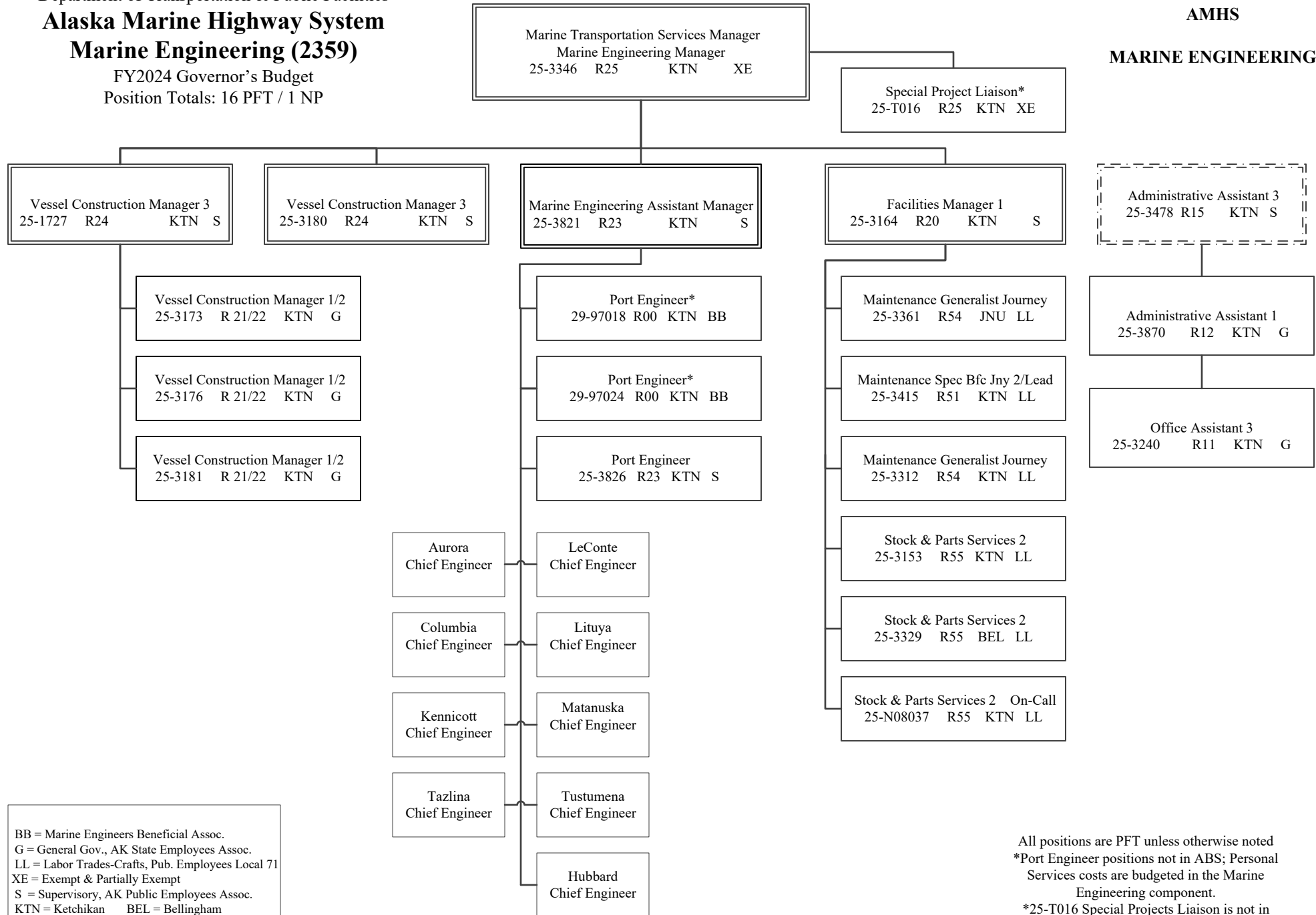


Department of Transportation & Public Facilities
Alaska Marine Highway System
Marine Engineering (2359)
 FY2024 Governor's Budget
 Position Totals: 16 PFT / 1 NP

AMHS

MARINE ENGINEERING



BB = Marine Engineers Beneficial Assoc.
 G = General Gov., AK State Employees Assoc.
 LL = Labor Trades-Crafts, Pub. Employees Local 71
 XE = Exempt & Partially Exempt
 S = Supervisory, AK Public Employees Assoc.
 KTN = Ketchikan BEL = Bellingham

All positions are PFT unless otherwise noted
 *Port Engineer positions not in ABS; Personal Services costs are budgeted in the Marine Engineering component.
 *25-T016 Special Projects Liaison is not in ABS; Personal Services costs are funded through the Tustumena Replacement Vessel capital project.