

# **State of Alaska FY2024 Governor's Operating Budget**

## **University of Alaska Juneau Campus Component Budget Summary**

**Component: Juneau Campus****Contribution to Department's Mission**

The Juneau campus offers the widest array of programs and services within UAS, supported by student housing, a well-developed campus infrastructure, and academic programs at all levels—undergraduate and graduate.

**Core Services**

- The Juneau Campus provides student residential facilities, including a residence hall for first year students and apartment living for more advanced students and those with families. In addition to campus-based housing, students enjoy meal service, and a rich array of student life activities.
- Egan Library on the Juneau Campus provides academic collections, technology, research support, and comfortable spaces for study and collaboration. Within the library are the Learning, Testing, and Writing Centers, which offer in person and remote tutoring in multiple subjects, test proctoring, and writing support for students.
- Juneau offers graduate degrees in public administration and education; baccalaureate degrees in business administration, science and liberal arts; two-year associate degrees; and certificate programs, occupational endorsements (OE), and workforce credentials in specialized fields.
- Juneau is the sole provider of certain bachelor's degrees and certificates including: all teacher education programs; diesel automotive, construction technology, and outdoor study programs.
- Juneau offers e-Learning/distance education programs and student support to both urban and rural communities throughout southeast Alaska and statewide.

**Major Component Accomplishments in 2022**

See University of Alaska Southeast Results Delivery Unit.

**Key Component Challenges**

See University of Alaska Southeast Results Delivery Unit.

**Significant Changes in Results to be Delivered in FY2024**

See University of Alaska Southeast Results Delivery Unit.

**Statutory and Regulatory Authority**

No statutes and regulations.

**Contact Information**

**Contact:** Michelle Rizk, Vice President, University Relations  
**Phone:** (907) 450-8187  
**E-mail:** marizk@alaska.edu

Juneau Campus Personal Services Information				
Authorized Positions			Personal Services Costs	
	<u>FY2023</u> <u>Management</u> <u>Plan</u>	<u>FY2024</u> <u>Governor</u>		
Full-time	231	231	Annual Salaries	0
Part-time	9	9	Premium Pay	0
Nonpermanent	0	0	Annual Benefits	0
			<i>Less % Vacancy Factor</i>	( )
			Lump Sum Premium Pay	0
<b>Totals</b>	<b>240</b>	<b>240</b>	<b>Total Personal Services</b>	

Position Classification Summary					
Job Class Title	Anchorage	Fairbanks	Juneau	Others	Total
No personal services.					
<b>Totals</b>	<b>0</b>	<b>0</b>	<b>0</b>	<b>0</b>	<b>0</b>

**Component Detail All Funds**  
University of Alaska

**Component:** Juneau Campus (762)  
**RDU:** University of Alaska Southeast (237)

Non-Formula Component

	FY2022 Actuals	FY2023 Conference Committee	FY2023 Authorized	FY2023 Management Plan	FY2024 Governor	FY2023 Management Plan vs FY2024 Governor	
71000 Personal Services	21,914.7	23,758.1	23,758.1	23,700.1	24,541.4	841.3	3.5%
72000 Travel	198.4	471.6	471.6	569.4	569.4	0.0	0.0%
73000 Services	9,300.7	13,971.8	12,471.8	8,176.2	8,176.2	0.0	0.0%
74000 Commodities	1,418.3	5,097.7	5,097.7	4,800.5	4,800.5	0.0	0.0%
75000 Capital Outlay	5,401.5	156.6	156.6	224.5	224.5	0.0	0.0%
77000 Grants, Benefits	1,834.5	2,367.2	2,367.2	3,043.0	3,043.0	0.0	0.0%
78000 Miscellaneous	120.0	555.3	555.3	555.1	555.1	0.0	0.0%
<b>Totals</b>	<b>40,188.1</b>	<b>46,378.3</b>	<b>44,878.3</b>	<b>41,068.8</b>	<b>41,910.1</b>	<b>841.3</b>	<b>2.0%</b>
<b>Fund Sources:</b>							
1002 Fed Rcpts (Fed)	2,471.1	4,047.1	4,047.1	4,047.1	4,047.1	0.0	0.0%
1003 G/F Match (UGF)	18.2	18.2	18.2	18.2	18.2	0.0	0.0%
1004 Gen Fund (UGF)	21,878.2	23,193.9	21,693.9	17,827.6	18,607.9	780.3	4.4%
1007 I/A Rcpts (Other)	60.8	749.1	749.1	749.1	749.1	0.0	0.0%
1048 Univ Rcpt (DGF)	11,235.2	16,786.5	16,786.5	16,786.5	16,847.5	61.0	0.4%
1061 CIP Rcpts (Other)	56.5	431.6	431.6	431.6	431.6	0.0	0.0%
1151 VoTech Ed (DGF)	261.2	228.2	228.2	285.0	285.0	0.0	0.0%
1174 UA I/A (Other)	1,552.8	923.7	923.7	923.7	923.7	0.0	0.0%
1265 COVID Fed (Fed)	2,654.1	0.0	0.0	0.0	0.0	0.0	0.0%
<b>Unrestricted General (UGF)</b>	<b>21,896.4</b>	<b>23,212.1</b>	<b>21,712.1</b>	<b>17,845.8</b>	<b>18,626.1</b>	<b>780.3</b>	<b>4.4%</b>
<b>Designated General (DGF)</b>	<b>11,496.4</b>	<b>17,014.7</b>	<b>17,014.7</b>	<b>17,071.5</b>	<b>17,132.5</b>	<b>61.0</b>	<b>0.4%</b>
<b>Other Funds</b>	<b>1,670.1</b>	<b>2,104.4</b>	<b>2,104.4</b>	<b>2,104.4</b>	<b>2,104.4</b>	<b>0.0</b>	<b>0.0%</b>
<b>Federal Funds</b>	<b>5,125.2</b>	<b>4,047.1</b>	<b>4,047.1</b>	<b>4,047.1</b>	<b>4,047.1</b>	<b>0.0</b>	<b>0.0%</b>
<b>Positions:</b>							
Permanent Full Time	231	231	231	231	231	0	0.0%
Permanent Part Time	9	9	9	9	9	0	0.0%
Non Permanent	0	0	0	0	0	0	0.0%

**Change Record Detail - Multiple Scenarios with Descriptions**  
**University of Alaska**

**Component:** Juneau Campus (762)  
**RDU:** University of Alaska Southeast (237)

Scenario/Change Record Title	Trans Type	Totals	Personal Services	Travel	Services	Commodities	Capital Outlay	Grants, Benefits	Miscellaneous	Positions		NP
										PFT	PPT	
***** Changes From FY2023 Conference Committee To FY2023 Authorized *****												
<b>FY2023 Conference Committee</b>												
	ConfCom	46,378.3	23,758.1	471.6	13,971.8	5,097.7	156.6	2,367.2	555.3	231	9	0
1002 Fed Rcpts		4,047.1										
1003 G/F Match		18.2										
1004 Gen Fund		23,193.9										
1007 I/A Rcpts		749.1										
1048 Univ Rcpt		16,786.5										
1061 CIP Rcpts		431.6										
1151 VoTech Ed		228.2										
1174 UA I/A		923.7										
<b>University of Alaska Fixed Costs in Excess of Board of Regents Request</b>												
	Veto	-1,500.0	0.0	0.0	-1,500.0	0.0	0.0	0.0	0.0	0	0	0
1004 Gen Fund		-1,500.0										
<b>Subtotal</b>		<b>44,878.3</b>	<b>23,758.1</b>	<b>471.6</b>	<b>12,471.8</b>	<b>5,097.7</b>	<b>156.6</b>	<b>2,367.2</b>	<b>555.3</b>	<b>231</b>	<b>9</b>	<b>0</b>
***** Changes From FY2023 Authorized To FY2023 Management Plan *****												
<b>Align Authority with Anticipated Expenditures</b>												
	LIT	0.0	-315.6	97.8	-228.5	-297.2	67.9	675.8	-0.2	0	0	0
Transfers between expenditure categories that University of Alaska management and the Board of Regents have deemed necessary to accurately reflect expenditure levels for FY2023.												
<b>Transfer Technical Vocational Education Program Funds to Align with Distributions</b>												
	Trin	56.8	0.0	0.0	56.8	0.0	0.0	0.0	0.0	0	0	0
1151 VoTech Ed		56.8										
Transfers between allocations to reallocate Vocational Technical funding to FY2023 programs approved by the University of Alaska Workforce Development Committee.												
(\$954.2) - Budget Reductions/Additions - Systemwide												
\$158.5 - Systemwide Services												
\$185.9 - Anchorage Campus												
\$71.8 - Kenai Peninsula College												
(\$41.5) - Kodiak College												
\$53.2 - Matanuska-Susitna College												
(\$6.3) - Prince William Sound College												
\$88.6 - Bristol Bay Campus												
\$83.2 - Fairbanks Campus												
\$47.3 - Interior Alaska Campus												

**Change Record Detail - Multiple Scenarios with Descriptions**  
**University of Alaska**

**Component:** Juneau Campus (762)  
**RDU:** University of Alaska Southeast (237)

Scenario/Change Record Title	Trans Type	Totals	Personal Services	Travel	Services	Commodities	Capital Outlay	Grants, Benefits	Miscellaneous	Positions		NP
										PFT	PPT	
<b>University of Alaska FY2023 Transfer to Budget Reductions/Additions</b>												
1004 Gen Fund	Trout	-21,712.1	0.0	0.0	-21,712.1	0.0	0.0	0.0	0.0	0	0	0
Transfer FY2023 conference committee unrestricted general funds from all components to budget reductions/additions. Funds will be redistributed to adjust for the impact of the multiple years of budget reductions.												
<b>University of Alaska FY2023 Distribution of Base State Funds</b>												
1004 Gen Fund	Trin	17,076.2	0.0	0.0	17,076.2	0.0	0.0	0.0	0.0	0	0	0

Redistribute unrestricted general funds from budget reductions/additions to all components. Represents the resetting impact of the multi-year budget reductions and the limitations imposed given the dual appropriation. FY2023 increases for compensation, fixed costs, and programs are recorded in separate change records.

**Change Record Detail - Multiple Scenarios with Descriptions**  
**University of Alaska**

**Component:** Juneau Campus (762)  
**RDU:** University of Alaska Southeast (237)

Scenario/Change Record Title	Trans Type	Totals	Personal Services	Travel	Services	Commodities	Capital Outlay	Grants, Benefits	Miscellaneous	Positions		
										PFT	PPT	NP
(\$272,733.5) - Budget Reductions/Additions - Systemwide												
\$8,994.9 - Systemwide Services												
\$5,570.3 - Office of Information Technology												
\$83,768.7 - Anchorage Campus												
\$959.6 - Small Business Development Center												
\$6,289.1 - Kenai Peninsula College												
\$2,303.3 - Kodiak College												
\$4,568.7 - Matanuska-Susitna College												
\$2,666.7 - Prince William Sound College												
\$120,838.3 - Fairbanks Campus												
\$1,100.3 - Bristol Bay College												
\$607.8 - Chukchi Campus												
\$4,786.3 - College of Rural and Community Development												
\$1,294.5 - Interior Alaska Campus												
\$2,324.6 - Kuskokwim Campus												
\$1,161.7 - Northwest Campus												
\$4,884.3 - University of Alaska Fairbanks Community and Technical college												
\$17,076.2 - Juneau Campus												
\$1,602.9 - Ketchikan Campus												
\$1,935.3 - Sitka Campus												

**University of Alaska Compensation Increases**

Trin	257.6	257.6	257.6	0.0	0.0	0.0	0.0	0.0	0.0	0	0	0
1004 Gen Fund	257.6											

Distribute funding for compensation increases to the following employee groups: University of Alaska non-union staff, Fairbanks Firefighters Association union, and Alaska Higher Education Crafts and Trades Employees (local 6070) union.

(\$4,357.6) - Budget Reductions/Additions - Systemwide												
\$346.6 - Systemwide Services												
\$127.7 - Office of Information Technology												
\$1,364.5 - Anchorage Campus												
\$78.1 - Kenai Peninsula College												
\$24.2 - Kodiak College												
\$63.5 - Matanuska-Susitna College												
\$47.3 - Prince William Sound College												
\$1,800.9 - Fairbanks Campus												
\$14.4 - Bristol Bay College												
\$10.3 - Chukchi Campus												
\$43.8 - College of Rural and Community Development												
\$16.8 - Interior Alaska Campus												

**Change Record Detail - Multiple Scenarios with Descriptions**  
**University of Alaska**

**Component:** Juneau Campus (762)  
**RDU:** University of Alaska Southeast (237)

Scenario/Change Record Title	Trans Type	Totals	Personal Services	Travel	Services	Commodities	Capital Outlay	Grants, Benefits	Miscellaneous	Positions		NP	
										PFT	PPT		
\$37.3 - Kuskokwim Campus													
\$17.5 - Northwest Campus													
\$48.0 - University of Alaska Fairbanks Community and Technical college													
\$257.6 - Juneau Campus													
\$32.2 - Ketchikan Campus													
\$26.9 - Sitka Campus													
<b>University of Alaska Fixed Cost Increases</b>													
1004 Gen Fund	Trin	181.0	0.0	0.0	181.0	0.0	0.0	0.0	0.0	0.0	0	0	0
Distribute funding for fixed cost increases: \$1 million for cyber-security and cloud migration, \$2 million for insurance premium increases, and \$1 million for facility maintenance.													
(\$4,000.0) - Budget Reductions/Additions - Systemwide													
\$44.0 - Systemwide Services													
\$1,000.0 - Office of Information Technology													
\$1,030.0 - Anchorage Campus													
\$1,745.0 - Fairbanks Campus													
\$181.0 - Juneau Campus													
<b>University of Alaska Community Campuses Fixed Cost Increases</b>													
1004 Gen Fund	Trout	-169.0	0.0	0.0	-169.0	0.0	0.0	0.0	0.0	0.0	0	0	0
Reallocate unrestricted general funds from main campuses to community campuses to off-set fixed cost increases. This distribution is necessary to preserve community campus funding as intended by the legislature.													
(\$135.0) - Systemwide Services													
(\$101.1) - Anchorage Campus													
\$47.7 - Kenai Peninsula College													
\$21.9 - Kodiak College													
\$26.5 - Matanuska-Susitna College													
\$5.0 - Prince William Sound College													
(\$32.1) - Fairbanks Campus													
\$7.3 - Bristol Bay College													
\$2.0 - Chukchi Campus													
\$9.1 - Interior Alaska Campus													
\$8.0 - Kuskokwim Campus													
\$5.7 - Northwest Campus													
(\$169.0) - Juneau Campus													
\$139.3 - Ketchikan Campus													



**Change Record Detail - Multiple Scenarios with Descriptions**  
**University of Alaska**

**Component:** Juneau Campus (762)  
**RDU:** University of Alaska Southeast (237)

Scenario/Change Record Title	Trans Type	Totals	Personal Services	Travel	Services	Commodities	Capital Outlay	Grants, Benefits	Miscellaneous	Positions		
										PFT	PPT	NP
\$164.7 - Sitka Campus												
<b>Record Program Funding</b>												
1004 Gen Fund	Trin	500.0	0.0	0.0	500.0	0.0	0.0	0.0	0.0	0	0	0
Distribution funding for the following University of Alaska programs:												
(\$7,850.0) - Budget Reductions/Additions - Systemwide												
\$3,500.0 College of Health Program Faculty - Anchorage Campus												
\$250.0 (Office of Information Technology) College of Health Program Medical Simulation Equipment and Technology - Anchorage Campus												
\$100.0 Mental Health Trust: The Alaska Training Cooperative (FY2023-FY2025) - Anchorage Campus												
\$1,000.0 Support Health Care Clinicals - Small Pilot - Anchorage Campus												
\$500.0 Support Teacher Practicums/ Student Teaching - Small Pilot - Fairbanks Campus												
\$ 500.0 Support Teacher Practicums/ Student Teaching - Small Pilot - Juneau Campus												
\$2,000.0 Alternate Energy Research - Fairbanks Campus												
<b>Subtotal</b>		<b>41,068.8</b>	<b>23,700.1</b>	<b>569.4</b>	<b>8,176.2</b>	<b>4,800.5</b>	<b>224.5</b>	<b>3,043.0</b>	<b>555.1</b>	<b>231</b>	<b>9</b>	<b>0</b>
***** <b>Changes From FY2023 Management Plan To FY2024 Governor</b> *****												
<b>University of Alaska Compensation Increases – Staff, Faculty, and Firefighters</b>												
	SalAdj	841.3	841.3	0.0	0.0	0.0	0.0	0.0	0.0	0	0	0
1004 Gen Fund		780.3										
1048 Univ Rcpt		61.0										

In accordance with the University of Alaska’s mission, the University of Alaska is committed to providing a competitive total compensation package, including salary and benefits, that will attract, retain, and reward high-performing employees who share a passion for higher education. The University of Alaska strives to make employee compensation performance-based, competitive to institutions with similar missions, and commensurate with the individual’s level of responsibility.

In FY2023, the University of Alaska was able to pay a two percent salary adjustment for all non-union staff, union-represented firefighters, and Local 6070 employees. The FY2024 request includes a 2.75 percent wage increase for staff and firefighters. Except for a market adjustment in FY2020, there has only been one across-the-board increase of one percent, for staff and firefighters, in the five prior years.

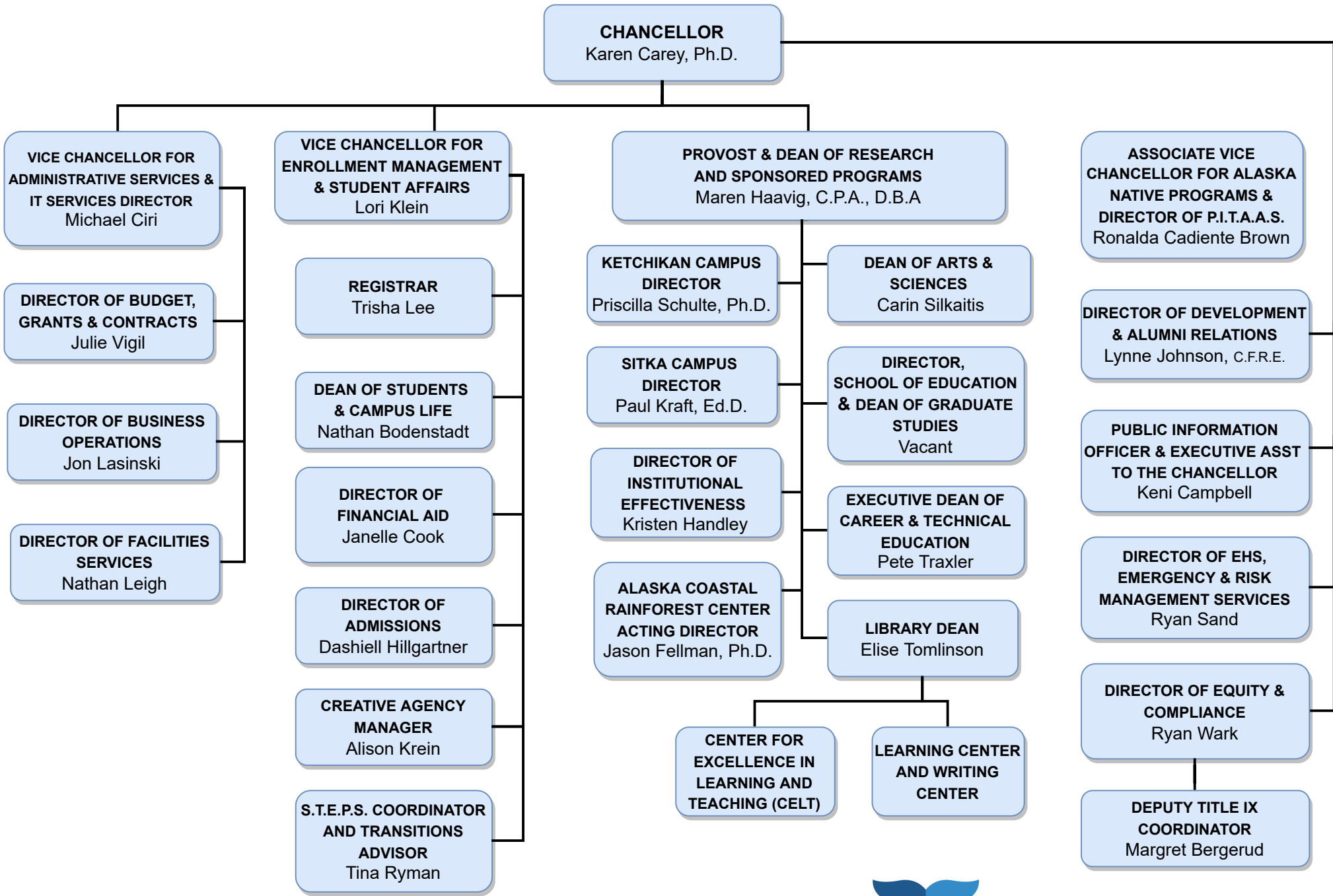
The University of Alaska and the United Academics faculty union (UNAC) reached a tentative agreement (TA) on a three-year contract that increases faculty pay by three percent in FY2023, 2.75 percent in FY2024, and 2.5 percent in FY2025. The TA is pending approval by the University of Alaska Board of Regents and the State Department of Administration, and ratification by the United Academics bargaining unit members. The FY2024 request includes a 2.75 percent wage increase for UNAC.

The University of Alaska and the United Academic Adjuncts faculty union (UNAD) reached a tentative agreement (TA) on a two-year contract that increases adjunct faculty pay for semester credit hour minimums by three percent in FY2023 and 2.75 percent in FY2024. The TA is pending approval by the University of Alaska Board of Regents and the State Department of Administration, and ratification by the adjunct bargaining unit members. The FY2024 request includes a 2.75 percent pay increase for UNAD.

**Change Record Detail - Multiple Scenarios with Descriptions**  
**University of Alaska**

**Component:** Juneau Campus (762)  
**RDU:** University of Alaska Southeast (237)

Scenario/Change Record Title	Trans Type	Totals	Personal Services	Travel	Services	Commodities	Capital Outlay	Grants, Benefits	Miscellaneous	Positions		
										PFT	PPT	NP
<p>The University of Alaska Pension Plan wage base shall increase from \$42 thousand to \$52 thousand effective the first full pay period after July 1, 2023. This change is estimated to cost \$2,500.0.</p> <p>In FY2024, the University of Alaska will renew its medical (including dental and vision) plan at a higher rate. Parental leave (five days) will be added to the benefits package and life insurance employer-paid benefit plan coverage will increase from \$50.0 to \$100.0. This request includes \$2,300.0 for health benefits increase expected in FY2024.</p>												
	<b>Totals</b>	<b>41,910.1</b>	<b>24,541.4</b>	<b>569.4</b>	<b>8,176.2</b>	<b>4,800.5</b>	<b>224.5</b>	<b>3,043.0</b>	<b>555.1</b>	<b>231</b>	<b>9</b>	<b>0</b>



Personal Services Expenditure Detail  
University of Alaska

**Component:** Juneau Campus (762)  
**RDU:** University of Alaska Southeast (237)

Notes:

1. If a position is split, an asterisk (\*) will appear in the Split/Count column. If the split position is also counted in the component, two asterisks (\*\*) will appear in the column.
2. "Pool" PCN refers to UA temporary positions, such as adjunct faculty; student employees; and other non-permanent staff. Multiple incumbents may share the same labor pool position number

PCN	Job Class Title	Location	Time Status	Split/Count	Employee Class	Benefit Rate	Annual	Annual	Total	UGF
							Budgeted Salary	Benefits	Costs	Estimate
880000	Associate Professor	Juneau	FT		United Academics BU	28.3%	105,193	29,770	134,963	83,274
880001	Assistant Professor	Juneau	FT		United Academics BU	28.3%	70,699	20,008	90,707	55,967
880002	Admin Generalist 3	Juneau	FT		PERS - Classified	48.6%	50,241	24,417	74,658	46,065
880003	Director (Academic-Faculty)	Juneau	FT		Non-Represented Faculty	24.6%	138,434	34,055	172,489	106,428
880004	Assistant Professor	Juneau	FT		United Academics BU	28.3%	95,693	27,081	122,774	75,753
880005	Assistant Professor	Juneau	PT		United Academics BU	28.3%	85,254	24,127	109,381	67,489
880007	Administrative Management 1	Juneau	FT		APT - Exempt Employees	38.5%	69,771	26,862	96,633	59,624
880008	Student Svcs Professional 2	Juneau	FT		PERS - Classified	48.6%	52,286	25,411	77,697	47,940
880009	Professor	Juneau	FT		United Academics BU	28.3%	118,076	33,416	151,492	93,472
880010	Assistant Professor	Juneau	PT		United Academics BU	28.3%	86,193	24,393	110,586	68,233
880012	Associate Dean/Faculty	Juneau	FT		Non-Represented Faculty	24.6%	100	-	100	-
880014	Stu Svcs Profess 2 (Exempt)	Juneau	FT		APT - Exempt Employees	38.5%	57,205	22,024	79,229	48,885
880016	Student Svcs Professional 1	Juneau	FT		PERS - Classified	48.6%	47,345	23,010	70,355	43,410
880017	Assistant Professor	Juneau	FT		United Academics BU	28.3%	62,478	17,681	80,159	49,459
880022	Associate Professor	Juneau	FT		United Academics BU	28.3%	83,866	23,734	107,600	66,391
880023	Assistant Professor	Juneau	FT		United Academics BU	28.3%	114,999	32,545	147,544	91,036
880026	Associate Professor	Juneau	FT		United Academics BU	28.3%	100	-	100	-
880027	Stu Svcs Profess 2 (Exempt)	Juneau	FT		APT - Exempt Employees	38.5%	61,955	23,853	85,808	52,944
880028	Associate Dean/Faculty	Juneau	FT		Non-Represented Faculty	24.6%	100	-	100	-
880031	Research Asst Professor	Juneau	FT		United Academics BU	28.3%	83,520	23,636	107,156	13,223
880032	Professor	Juneau	FT		United Academics BU	28.3%	100	-	100	-
880033	Assistant Professor	Juneau	FT		United Academics BU	28.3%	81,130	22,960	104,090	64,225
880034	Assistant Professor	Juneau	FT		United Academics BU	28.3%	111,103	31,442	142,545	87,952
880035	Professor	Juneau	FT		United Academics BU	28.3%	112,070	31,716	143,786	88,718
880038	Stu Svcs Profess 3 (NonExempt)	Juneau	FT		PERS - Classified	48.6%	60,719	29,509	90,228	55,672
880040	Training & Development 3	Juneau	FT		PERS - Classified	48.6%	39,462	19,179	58,641	36,182
880041	IS Professional 2A	Juneau	FT		PERS - Classified	48.6%	100	-	100	-
880043	Associate Professor	Juneau	FT		United Academics BU	28.3%	107,468	30,413	137,881	85,075
880044	Associate Professor	Juneau	FT		United Academics BU	28.3%	117,936	33,376	151,312	93,361
880046	Professor	Juneau	FT		United Academics BU	28.3%	100	-	100	-
880048	IS Consultant 2A	Juneau	FT		PERS - Classified	48.6%	46,450	22,575	69,025	42,589
880050	Student Svcs Manager 2	Juneau	FT		APT - Exempt Employees	38.5%	73,328	28,231	101,559	62,663
880055	Admin Generalist 3	Juneau	FT		PERS - Classified	48.6%	45,960	22,337	68,297	42,140
880060	Associate Professor	Juneau	FT		United Academics BU	28.3%	86,237	24,405	110,642	68,268
880061	Professor	Juneau	FT		United Academics BU	28.3%	104,095	29,459	133,554	82,404

Personal Services Expenditure Detail  
University of Alaska

**Component:** Juneau Campus (762)  
**RDU:** University of Alaska Southeast (237)

Notes:

1. If a position is split, an asterisk (\*) will appear in the Split/Count column. If the split position is also counted in the component, two asterisks (\*\*) will appear in the column.
2. "Pool" PCN refers to UA temporary positions, such as adjunct faculty; student employees; and other non-permanent staff. Multiple incumbents may share the same labor pool position number

PCN	Job Class Title	Location	Time Status	Split/Count	Employee Class	Benefit Rate	Annual	Annual	Total	UGF
							Budgeted Salary	Benefits	Costs	Estimate
880062	Assistant Professor	Juneau	FT		United Academics BU	28.3%	70,699	20,008	90,707	55,967
880063	Assistant Professor	Juneau	FT		United Academics BU	28.3%	100,328	28,393	128,721	79,422
880064	Associate Professor	Juneau	FT		United Academics BU	28.3%	95,004	26,886	121,890	75,208
880065	Professor	Juneau	FT		United Academics BU	28.3%	85,862	24,299	110,161	67,971
880066	Associate Professor	Juneau	FT		United Academics BU	28.3%	82,087	23,231	105,318	64,982
880067	Assistant Professor	Juneau	FT	**	United Academics BU	28.3%	60,280	17,059	77,339	47,719
880068	Associate Professor	Juneau	FT		United Academics BU	28.3%	82,789	23,429	106,218	65,538
880069	Professor	Juneau	FT		United Academics BU	28.3%	90,371	25,575	115,946	71,540
880070	Associate Professor	Juneau	FT		United Academics BU	28.3%	80,028	22,648	102,676	63,352
880071	Associate Professor	Juneau	FT		United Academics BU	28.3%	80,590	22,807	103,397	63,797
880072	Research Technician 3	Juneau	FT		PERS - Classified	48.6%	38,574	18,747	57,321	35,368
880073	Admin Specialist 2	Juneau	FT		PERS - Classified	48.6%	60,719	29,509	90,228	55,672
880076	Associate Professor	Juneau	FT		United Academics BU	28.3%	105,047	29,728	134,775	83,158
880079	Professor	Juneau	FT		United Academics BU	28.3%	101,369	28,687	130,056	80,246
880082	Assistant Professor	Juneau	FT		United Academics BU	28.3%	100	-	100	-
880084	Professor	Juneau	FT		United Academics BU	28.3%	83,895	23,742	107,637	66,414
880085	Associate Professor	Juneau	FT		United Academics BU	28.3%	74,396	21,054	95,450	58,894
880086	Assistant Professor	Juneau	FT		United Academics BU	28.3%	65,005	18,396	83,401	51,460
880087	Assistant Professor	Juneau	FT		United Academics BU	28.3%	64,007	18,114	82,121	50,670
880088	Associate Professor	Juneau	FT		United Academics BU	28.3%	100	-	100	-
880089	Assistant Professor	Juneau	FT		United Academics BU	28.3%	78,608	22,246	100,854	62,228
880090	Associate Professor	Juneau	FT		United Academics BU	28.3%	79,622	22,533	102,155	63,031
880091	Associate Professor	Juneau	FT		United Academics BU	28.3%	79,888	22,608	102,496	63,242
880092	Professor	Juneau	FT		United Academics BU	28.3%	86,642	24,520	111,162	68,588
880096	Admin Generalist 3	Juneau	FT		PERS - Classified	48.6%	46,450	22,575	69,025	42,589
880098	Associate Professor	Juneau	FT		United Academics BU	28.3%	60,278	17,059	77,337	47,718
880100	Professor	Juneau	FT		United Academics BU	28.3%	80,605	22,811	103,416	63,809
880102	Assistant Professor	Juneau	FT		United Academics BU	28.3%	65,629	18,573	84,202	51,954
880103	Assistant Professor	Juneau	FT		United Academics BU	28.3%	66,799	18,904	85,703	52,880
880104	Assistant Professor	Juneau	FT		United Academics BU	28.3%	68,999	19,527	88,526	54,622
880105	Associate Professor	Juneau	FT		United Academics BU	28.3%	72,883	20,626	93,509	57,696
880107	Professor	Juneau	FT		United Academics BU	28.3%	82,290	23,288	105,578	65,143
880109	Training & Development 3	Juneau	FT		PERS - Classified	48.6%	32,055	15,579	47,634	29,391
880110	Training & Development 3	Juneau	FT		PERS - Classified	48.6%	29,298	14,239	43,537	26,863
880111	Administrative Professional 2	Juneau	FT		APT - Exempt Employees	38.5%	88,619	34,118	122,737	75,731

Personal Services Expenditure Detail  
University of Alaska

**Component:** Juneau Campus (762)  
**RDU:** University of Alaska Southeast (237)

Notes:

1. If a position is split, an asterisk (\*) will appear in the Split/Count column. If the split position is also counted in the component, two asterisks (\*\*) will appear in the column.
2. "Pool" PCN refers to UA temporary positions, such as adjunct faculty; student employees; and other non-permanent staff. Multiple incumbents may share the same labor pool position number

PCN	Job Class Title	Location	Time Status	Split/Count	Employee Class	Benefit Rate	Annual	Annual	Total	UGF
							Budgeted Salary	Benefits	Costs	Estimate
880112	Professor	Juneau	FT		United Academics BU	28.3%	98,006	27,736	125,742	77,584
880113	Admin Generalist 4	Juneau	FT		PERS - Classified	48.6%	46,450	22,575	69,025	42,589
880117	Professor	Juneau	FT		United Academics BU	28.3%	77,298	21,875	99,173	61,191
880118	Professor	Juneau	FT		United Academics BU	28.3%	64,997	18,394	83,391	-
880119	Assistant Professor	Juneau	FT		United Academics BU	28.3%	64,007	18,114	82,121	50,670
880120	Development 3	Juneau	FT		APT - Exempt Employees	38.5%	61,955	23,853	85,808	52,944
880126	Admin Generalist 3	Juneau	FT		PERS - Classified	48.6%	42,446	20,629	63,075	38,918
880129	Communications Manager 2	Juneau	FT		APT - Exempt Employees	38.5%	91,825	31,503	113,328	69,925
880131	Administrative Management 3	Juneau	FT		APT - Exempt Employees	38.5%	99,886	38,456	138,342	85,359
880132	Professor	Juneau	FT		United Academics BU	28.3%	87,670	24,811	112,481	69,402
880136	Assistant Professor	Juneau	FT		United Academics BU	28.3%	63,086	17,853	80,939	49,941
880137	Assistant Professor	Juneau	FT		United Academics BU	28.3%	60,871	17,226	78,097	48,187
880138	Mental Health Provider 2	Juneau	FT		APT - Exempt Employees	38.5%	40,277	15,507	55,784	34,419
880148	Mental Health Provider 2	Juneau	FT		APT - Exempt Employees	38.5%	65,746	25,312	91,058	56,184
880198	Assistant Professor	Juneau	FT		United Academics BU	28.3%	60,622	17,156	77,778	47,990
880200	Associate Professor	Juneau	FT		United Academics BU	28.3%	84,224	23,835	108,059	66,674
880201	Maintenance Serv Worker (MSW1)	Juneau	FT		AHECTE- Labor Trades & Crafts	47.2%	37,591	17,743	55,334	34,142
880202	Maint Service Workr III (MSW3)	Juneau	FT		AHECTE- Labor Trades & Crafts	47.2%	41,892	19,773	61,665	38,048
880203	Assistant Professor	Juneau	FT		United Academics BU	28.3%	61,215	17,324	78,539	48,459
880205	Communications Specialist 4	Juneau	FT		APT - Exempt Employees	38.5%	55,544	21,384	76,928	23,733
880206	Professor	Juneau	FT		United Academics BU	28.3%	76,431	21,630	98,061	60,505
880207	Student Svcs Professional 3	Juneau	PT		APT - Exempt Employees	38.5%	39,439	15,184	54,623	33,703
880208	Crafts & Trades II (CT2)	Juneau	FT		AHECTE- Labor Trades & Crafts	47.2%	66,385	31,334	97,719	60,294
880210	Dean (Admin)	Juneau	FT		Officer	24.6%	105,466	25,945	131,411	81,082
880211	Assistant Professor	Juneau	FT		United Academics BU	28.3%	77,674	21,982	99,656	61,489
880212	Assistant Professor	Juneau	FT		United Academics BU	28.3%	58,032	16,423	74,455	45,940
880213	Associate Professor	Juneau	FT		United Academics BU	28.3%	84,543	23,926	108,469	66,927
880215	Admin Generalist 4	Juneau	FT		PERS - Classified	48.6%	52,286	25,411	77,697	47,940
880216	Admin Generalist 4	Juneau	FT		PERS - Classified	48.6%	63,829	31,021	94,850	58,524
880217	Library Technician 3	Juneau	FT		PERS - Classified	48.6%	43,319	21,053	64,372	39,718
880219	Library Technician 2	Juneau	FT		PERS - Classified	48.6%	100	-	100	-
880220	Administrative Management 3	Juneau	FT		APT - Exempt Employees	38.5%	100	-	100	-
880221	Admin Generalist 4	Juneau	FT		PERS - Classified	48.6%	50,773	24,676	75,449	46,553
880222	Library Technician 2	Juneau	PT		PERS - Classified	48.6%	25,387	12,338	37,725	23,277
880224	Associate Professor	Juneau	FT		United Academics BU	28.3%	84,142	23,812	107,954	66,609

Personal Services Expenditure Detail  
University of Alaska

**Component:** Juneau Campus (762)  
**RDU:** University of Alaska Southeast (237)

Notes:

1. If a position is split, an asterisk (\*) will appear in the Split/Count column. If the split position is also counted in the component, two asterisks (\*\*) will appear in the column.
2. "Pool" PCN refers to UA temporary positions, such as adjunct faculty; student employees; and other non-permanent staff. Multiple incumbents may share the same labor pool position number

PCN	Job Class Title	Location	Time Status	Split/Count	Employee Class	Benefit Rate	Annual	Annual	Total	UGF
							Budgeted Salary	Benefits	Costs	Estimate
880225	Student Svcs Professional 2	Juneau	FT		PERS - Classified	48.6%	45,800	22,259	68,059	41,993
880227	Broadcast/Media Professional 3	Juneau	FT		APT - Exempt Employees	38.5%	62,551	24,082	86,633	53,454
880229	Library Technician 3	Juneau	FT		PERS - Classified	48.6%	45,044	21,891	66,935	41,300
880230	Campus Services Generalist 3	Juneau	FT		PERS - Classified	48.6%	38,101	18,517	56,618	-
880231	Campus Services Generalist 3	Juneau	FT		PERS - Classified	48.6%	38,442	18,683	57,125	-
880232	Campus Services Generalist 4	Juneau	FT		PERS - Classified	48.6%	41,190	20,018	61,208	-
880233	Instructional Designer 2	Juneau	FT		PERS - Classified	48.6%	55,544	26,994	82,538	50,927
880235	Assistant Professor	Juneau	FT		United Academics BU	28.3%	69,077	19,549	88,626	54,683
880245	IS Professional 5A	Juneau	FT		APT - Exempt Employees	38.5%	80,207	30,880	111,087	68,542
880246	IS Consultant 2A	Juneau	FT		PERS - Classified	48.6%	41,437	20,138	61,575	37,993
880250	Provost	Juneau	FT		Officer	24.6%	172,021	42,317	214,338	132,249
880251	Senior Administrator Officer	Juneau	FT		Officer	24.6%	100	-	100	-
880253	Physical Health Provider 4	Juneau	PT		APT - Exempt Employees	38.5%	64,312	24,760	89,072	54,959
880256	Assistant Professor	Juneau	FT		United Academics BU	28.3%	98,011	27,737	125,748	77,588
880257	Student Svcs Professional 2	Juneau	FT		PERS - Classified	48.6%	57,802	28,092	85,894	52,998
880270	Dean (Academic)	Juneau	FT		Officer	24.6%	155,643	38,288	193,931	119,658
880273	Administrative Management 1	Juneau	FT		APT - Exempt Employees	38.5%	74,840	28,813	103,653	63,955
880274	Admin Specialist 2	Juneau	FT		PERS - Classified	48.6%	72,625	35,296	107,921	66,588
880275	Assistant Professor	Juneau	FT		United Academics BU	28.3%	75,005	21,226	96,231	59,376
880276	Stu Svcs Profess 2 (Exempt)	Juneau	FT		APT - Exempt Employees	38.5%	39,891	15,358	55,249	34,089
880277	Research Professional 2	Juneau	FT		APT - Exempt Employees	38.5%	100	-	100	-
880405	Student Svcs Manager 2	Juneau	FT		APT - Exempt Employees	38.5%	76,267	29,363	105,630	65,175
880406	Student Svcs Professional 1	Juneau	FT		PERS - Classified	48.6%	46,450	22,575	69,025	42,589
880407	Student Svcs Manager 1	Juneau	FT		APT - Exempt Employees	38.5%	57,205	22,024	79,229	48,885
880408	Student Svcs Professional 2	Juneau	FT		PERS - Classified	48.6%	52,286	25,411	77,697	47,940
880409	Stu Svcs Profess 2 (Exempt)	Juneau	FT		APT - Exempt Employees	38.5%	54,985	21,169	76,154	46,988
880410	Vice Chancellor (Admin)	Juneau	FT		Officer	24.6%	135,304	33,285	168,589	104,021
880411	Student Svcs Professional 1	Juneau	FT		PERS - Classified	48.6%	46,883	22,785	69,668	42,986
880412	Student Svcs Manager 1	Juneau	FT		APT - Exempt Employees	38.5%	55,544	21,384	76,928	-
880413	Stu Svcs Profess 2 (Exempt)	Juneau	FT		APT - Exempt Employees	38.5%	48,566	18,698	67,264	41,503
880414	Student Svcs Professional 3	Juneau	FT		APT - Exempt Employees	38.5%	71,176	27,403	98,579	60,824
880416	Campus Services Generalist 3	Juneau	FT		PERS - Classified	48.6%	38,442	18,683	57,125	-
880417	Stu Svcs Profess 2 (Exempt)	Juneau	FT		APT - Exempt Employees	38.5%	49,302	18,981	68,283	42,132
880419	Communications Specialist 4	Juneau	FT		APT - Exempt Employees	38.5%	61,927	23,842	85,769	52,921
880420	Stu Svcs Profess 2 (Exempt)	Juneau	FT		APT - Exempt Employees	38.5%	65,746	25,312	91,058	56,184

Personal Services Expenditure Detail  
University of Alaska

**Component:** Juneau Campus (762)  
**RDU:** University of Alaska Southeast (237)

Notes:

1. If a position is split, an asterisk (\*) will appear in the Split/Count column. If the split position is also counted in the component, two asterisks (\*\*) will appear in the column.
2. "Pool" PCN refers to UA temporary positions, such as adjunct faculty; student employees; and other non-permanent staff. Multiple incumbents may share the same labor pool position number

PCN	Job Class Title	Location	Time Status	Split/Count	Employee Class	Benefit Rate	Annual	Annual	Total	UGF
							Budgeted Salary	Benefits	Costs	Estimate
880430	Communications Specialist 4	Juneau	FT		APT - Exempt Employees	38.5%	67,066	25,820	92,886	57,312
880433	Administrative Management 1	Juneau	FT		APT - Exempt Employees	38.5%	68,387	26,329	94,716	-
880500	Chancellor	Juneau	FT		Officer	24.6%	232,378	57,165	289,543	178,652
880503	Administrative Management 2	Juneau	FT		APT - Exempt Employees	38.5%	81,826	31,503	113,329	69,925
880505	Fiscal Manager 2	Juneau	FT		APT - Exempt Employees	38.5%	77,097	29,682	106,779	65,884
880506	Stu Svcs Profess 2 (Exempt)	Juneau	FT		APT - Exempt Employees	38.5%	49,302	18,981	68,283	-
880511	Fiscal Technician 3	Juneau	FT		PERS - Classified	48.6%	52,286	25,411	77,697	47,940
880519	Fiscal Professional 1	Juneau	FT		PERS - Classified	48.6%	53,393	25,949	79,342	48,955
880521	Research Professional 4	Juneau	FT		APT - Exempt Employees	38.5%	65,746	25,312	91,058	56,184
880522	Fiscal Manager 4	Juneau	FT		APT - Exempt Employees	38.5%	104,976	40,416	145,392	89,709
880524	Fiscal Technician 3	Juneau	FT		PERS - Classified	48.6%	57,205	27,802	85,007	52,450
880525	Fiscal Technician 3	Juneau	FT		PERS - Classified	48.6%	100	-	100	-
880527	Fiscal Technician 2	Juneau	FT		PERS - Classified	48.6%	43,319	21,053	64,372	39,718
880529	Fiscal Professional 2	Juneau	FT		APT - Exempt Employees	38.5%	70,495	27,141	97,636	60,242
880530	Fiscal Professional 2	Juneau	FT		APT - Exempt Employees	38.5%	61,955	23,853	85,808	52,944
880531	Administrative Management 1	Juneau	FT		APT - Exempt Employees	38.5%	60,098	23,138	83,236	51,358
880532	Fiscal Professional 1	Juneau	FT		PERS - Classified	48.6%	51,796	25,173	76,969	47,491
880533	Proc/ Cont Svcs Professional 2	Juneau	FT		APT - Exempt Employees	38.5%	64,425	24,804	89,229	55,055
880535	Vice Chancellor (Admin)	Juneau	FT		Officer	24.6%	144,313	35,501	179,814	110,948
880537	Fiscal Manager 4	Juneau	FT		APT - Exempt Employees	38.5%	104,976	40,416	145,392	89,709
880539	Admin Specialist 2	Juneau	FT		PERS - Classified	48.6%	50,773	24,676	75,449	46,553
880553	Development 5	Juneau	FT		APT - Exempt Employees	38.5%	107,106	41,236	148,342	91,529
880554	Development 2	Juneau	FT		PERS - Classified	48.6%	54,437	26,456	80,893	-
880561	Student Svcs Technician 2	Juneau	FT		PERS - Classified	48.6%	41,190	20,018	61,208	37,766
880562	Student Svcs Technician 3	Juneau	FT		PERS - Classified	48.6%	56,077	27,253	83,330	51,416
880563	Student Svcs Technician 2	Juneau	FT		PERS - Classified	48.6%	100	-	100	-
880565	Student Svcs Technician 3	Juneau	FT		PERS - Classified	48.6%	47,345	23,010	70,355	43,410
880566	Student Svcs Technician 3	Juneau	FT		PERS - Classified	48.6%	46,450	22,575	69,025	42,589
880567	Student Svcs Professional 4	Juneau	FT		APT - Exempt Employees	38.5%	68,387	26,329	94,716	58,441
880568	Student Svcs Manager 2	Juneau	FT		APT - Exempt Employees	38.5%	78,631	30,273	108,904	67,195
880571	Admin Specialist 2	Juneau	FT		PERS - Classified	48.6%	50,773	24,676	75,449	-
880587	IS Professional 5A	Juneau	FT		APT - Exempt Employees	38.5%	86,894	33,454	120,348	74,256
880588	IS Ops Technician 4	Juneau	FT		PERS - Classified	48.6%	68,387	33,236	101,623	62,703
880589	IS Professional 5A	Juneau	FT		APT - Exempt Employees	38.5%	86,894	33,454	120,348	74,256
880600	Director (Admin)	Juneau	FT		Officer	24.6%	113,708	27,972	141,680	87,418



Personal Services Expenditure Detail  
University of Alaska

**Component:** Juneau Campus (762)  
**RDU:** University of Alaska Southeast (237)

Notes:

1. If a position is split, an asterisk (\*) will appear in the Split/Count column. If the split position is also counted in the component, two asterisks (\*\*) will appear in the column.
2. "Pool" PCN refers to UA temporary positions, such as adjunct faculty; student employees; and other non-permanent staff. Multiple incumbents may share the same labor pool position number

PCN	Job Class Title	Location	Time Status	Split/Count	Employee Class	Benefit Rate	Annual	Annual	Total	UGF
							Budgeted Salary	Benefits	Costs	Estimate
880601	Maint Service Worker IV (MSW4)	Juneau	FT		AHECTE- Labor Trades & Crafts	47.2%	59,068	27,880	86,948	53,648
880602	Admin Generalist 4	Juneau	FT		PERS - Classified	48.6%	47,345	23,010	70,355	43,410
880605	Fac Svcs-MO&U Supervisor 5	Juneau	FT		APT - Exempt Employees	38.5%	83,465	32,134	115,599	57,061
880606	Maintenance Serv Worker (MSW1)	Juneau	FT		AHECTE- Labor Trades & Crafts	47.2%	32,090	15,146	47,236	29,146
880607	Crafts & Trades III (CT3)	Juneau	FT		AHECTE- Labor Trades & Crafts	47.2%	69,941	33,012	102,953	50,819
880608	Crafts & Trades III (CT3)	Juneau	FT		AHECTE- Labor Trades & Crafts	47.2%	69,941	33,012	102,953	50,819
880609	Crafts & Trades III (CT3)	Juneau	FT		AHECTE- Labor Trades & Crafts	47.2%	78,269	36,943	115,212	56,870
880610	Maintenance Serv Worker (MSW1)	Juneau	FT		AHECTE- Labor Trades & Crafts	47.2%	36,853	17,395	54,248	33,471
880611	Fac Svcs-MO&U Supervisor 3	Juneau	PT		PERS - Classified	48.6%	38,133	18,533	56,666	34,963
880612	Environmental Health/Safety 4	Juneau	FT		APT - Exempt Employees	38.5%	91,303	35,152	126,455	78,024
880613	Admin Generalist 3	Juneau	FT		PERS - Classified	48.6%	41,592	20,214	61,806	-
880615	Communications Specialist 3	Juneau	FT		PERS - Classified	48.6%	60,719	29,509	90,228	55,672
880618	Student Svcs Manager 2	Juneau	FT		APT - Exempt Employees	38.5%	65,746	25,312	91,058	-
880619	Crafts & Trades I (CT1)	Juneau	FT		AHECTE- Labor Trades & Crafts	47.2%	54,160	25,564	79,724	49,190
880621	Maintenance Serv Worker (MSW1)	Juneau	FT		AHECTE- Labor Trades & Crafts	47.2%	40,118	18,936	59,054	36,437
880622	Maintenance Serv Worker (MSW1)	Juneau	FT		AHECTE- Labor Trades & Crafts	47.2%	33,387	15,759	49,146	30,324
880623	Maintenance Serv Worker (MSW1)	Juneau	FT		AHECTE- Labor Trades & Crafts	47.2%	36,160	17,068	53,228	32,842
880625	Fac Svcs-MO&U Supervisor 3	Juneau	FT		APT - Exempt Employees	38.5%	58,334	22,459	80,793	49,850
880629	Fac Engineering 5	Juneau	FT		APT - Exempt Employees	38.5%	100	-	100	-
880630	Admin Generalist 4	Juneau	FT		PERS - Classified	48.6%	46,450	22,575	69,025	42,589
880632	Maint Service Worker II (MSW2)	Juneau	FT		AHECTE- Labor Trades & Crafts	47.2%	43,085	20,336	63,421	-
880633	Crafts & Trades I (CT1)	Juneau	FT		AHECTE- Labor Trades & Crafts	47.2%	56,311	26,579	82,890	40,915
880637	Maint Service Worker IV (MSW4)	Juneau	FT		AHECTE- Labor Trades & Crafts	47.2%	100	-	100	-
880640	Crafts & Trades III (CT3)	Juneau	FT		AHECTE- Labor Trades & Crafts	47.2%	69,941	33,012	102,953	50,819
880642	Maintenance Serv Worker (MSW1)	Juneau	FT		AHECTE- Labor Trades & Crafts	47.2%	36,160	17,068	53,228	32,842
880643	Maintenance Serv Worker (MSW1)	Juneau	FT		AHECTE- Labor Trades & Crafts	47.2%	36,853	17,395	54,248	33,471
880650	Fac Engineering 4	Juneau	FT		APT - Exempt Employees	38.5%	67,687	26,059	93,746	57,843
880651	Fac Engineering 5	Juneau	FT		APT - Exempt Employees	38.5%	95,967	36,947	132,914	82,010
880701	Associate Dean/Faculty	Juneau	FT		Non-Represented Faculty	24.6%	138,391	34,044	172,435	85,116
880702	Research Assoc Professor	Juneau	FT		United Academics BU	28.3%	108,501	30,706	139,207	17,178
880704	Development 3	Juneau	FT		APT - Exempt Employees	38.5%	61,955	23,853	85,808	52,944
880705	Assistant Professor	Juneau	FT		United Academics BU	28.3%	71,225	20,157	91,382	56,384
880706	Associate Vice Chancellor	Juneau	FT		Sr. Administrator	24.6%	95,435	23,477	118,912	73,370
880707	IS Professional 1A	Juneau	FT		PERS - Classified	48.6%	52,286	25,411	77,697	47,940
880708	Assistant Professor	Juneau	PT		United Academics BU	28.3%	76,329	21,601	97,930	6,647

Personal Services Expenditure Detail  
University of Alaska

**Component:** Juneau Campus (762)  
**RDU:** University of Alaska Southeast (237)

Notes:

1. If a position is split, an asterisk (\*) will appear in the Split/Count column. If the split position is also counted in the component, two asterisks (\*\*) will appear in the column.
2. "Pool" PCN refers to UA temporary positions, such as adjunct faculty; student employees; and other non-permanent staff. Multiple incumbents may share the same labor pool position number

PCN	Job Class Title	Location	Time Status	Split/Count	Employee Class	Benefit Rate	Annual	Annual	Total	UGF
							Budgeted Salary	Benefits	Costs	Estimate
880709	Administrative Management 1	Juneau	FT		APT - Exempt Employees	38.5%	69,771	26,862	96,633	53,661
880710	Professor	Juneau	FT		United Academics BU	28.3%	83,569	23,650	107,219	66,156
880711	Assistant Professor	Juneau	FT		United Academics BU	28.3%	87,377	24,728	112,105	69,170
880712	Admin Specialist 3	Juneau	FT		APT - Exempt Employees	38.5%	64,425	24,804	89,229	55,055
880716	Research Professional 2	Juneau	FT		APT - Exempt Employees	38.5%	55,544	21,384	76,928	14,240
880800	Administrative Professional 4	Juneau	FT		APT - Exempt Employees	38.5%	96,925	37,316	134,241	82,829
880805	Administrative Management 4	Juneau	FT		APT - Exempt Employees	38.5%	91,303	35,152	126,455	15,605
880808	Maintenance Serv Worker (MSW1)	Juneau	FT		AHECTE- Labor Trades & Crafts	47.2%	33,387	15,759	49,146	30,324
880810	Assistant Professor	Juneau	FT		United Academics BU	28.3%	117,827	33,345	151,172	93,275
880815	Admin Specialist 2	Juneau	FT		PERS - Classified	48.6%	55,544	26,994	82,538	50,927
880816	Development 1	Juneau	FT		PERS - Classified	48.6%	100	-	100	-
880817	Admin Specialist 2	Juneau	PT		PERS - Classified	48.6%	44,743	21,745	66,488	41,024
880850	Campus Services Retail 5	Juneau	FT		APT - Exempt Employees	38.5%	61,358	23,623	84,981	-
880865	Admin Generalist 3	Juneau	FT		PERS - Classified	48.6%	19,666	9,558	29,224	-
880870	Student Svcs Professional 3	Juneau	FT		APT - Exempt Employees	38.5%	76,267	29,363	105,630	-
880872	Student Svcs Technician 2	Juneau	FT		PERS - Classified	48.6%	41,190	20,018	61,208	37,766
889001	Assistant Professor	Juneau	FT		United Academics BU	28.3%	75,000	21,225	96,225	59,372
890030	Professor	Juneau	FT		United Academics BU	28.3%	94,676	26,793	121,469	74,948
890035	Research Technician 3	Juneau	FT		PERS - Classified	48.6%	43,438	21,111	64,549	39,827
890050	Assistant Professor	Juneau	FT		United Academics BU	28.3%	74,006	20,944	94,950	58,585
890085	IS Net Technician 7	Juneau	FT		PERS - Classified	48.6%	62,551	30,400	92,951	57,352
890140	IS Net Technician 5	Juneau	FT		PERS - Classified	48.6%	46,897	22,792	69,689	42,999
890141	IS Professional 3A	Juneau	FT		APT - Exempt Employees	38.5%	70,496	27,141	97,637	60,243
890143	IS Consultant 2A	Juneau	FT		PERS - Classified	48.6%	56,555	27,486	84,041	51,854
890155	Administrative Management 5	Juneau	FT		APT - Exempt Employees	38.5%	91,303	35,152	126,455	78,024
890160	Student Svcs Manager 1	Juneau	FT		APT - Exempt Employees	38.5%	56,067	21,586	77,653	-
890165	Administrative Management 1	Juneau	FT		APT - Exempt Employees	38.5%	69,089	26,599	95,688	59,041
890170	Associate Professor	Juneau	FT		United Academics BU	28.3%	73,757	20,873	94,630	58,388
890175	Stu Svcs Profess 2 (Exempt)	Juneau	FT		APT - Exempt Employees	38.5%	51,796	19,941	71,737	44,263
890182	Assistant Professor	Juneau	PT		United Academics BU	28.3%	50,509	14,294	64,803	39,984
Pool	Adjunct Faculty	Juneau	PT		Non-Represented Adjunct Faculty	0.0%	45,492	4,057	49,549	30,572
Pool	Adjunct Faculty	Juneau	PT		UNAD Adjunct Faculty	0.0%	581,871	51,995	633,867	391,104
Pool	UA Labor Pool	Juneau	PT		Labor Pool	0.0%	1,917,129		1,917,129	1,045,090
<b>Total Position Costs</b>							<b>18,102,341</b>	<b>5,597,759</b>	<b>23,700,100</b>	<b>13,329,430</b>

Personal Services Expenditure Detail  
University of Alaska

**Component:** Juneau Campus (762)  
**RDU:** University of Alaska Southeast (237)

Notes:

1. If a position is split, an asterisk (\*) will appear in the Split/Count column. If the split position is also counted in the component, two asterisks (\*\*) will appear in the column.
2. "Pool" PCN refers to UA temporary positions, such as adjunct faculty; student employees; and other non-permanent staff. Multiple incumbents may share the same labor pool position number

PCN	Job Class Title	Location	Time Status	Split/Count	Employee Class	Benefit Rate	Annual Budgeted Salary	Annual Benefits	Total Costs	UGF Estimate
	Full Time Positions:	231								
	Part Time Positions:	9								
	<b>Positions in Component:</b>	<b>240</b>								
							Federal Receipts (1002)		617,571	
							General Fund Receipts (1004)		13,329,430	
							Interagency Receipts (1007)		16,809	
							University Receipts (1048)		9,113,768	
							UA Intra-agency Transfers (1174)		622,523	
							<b>UA Funding</b>		<b>23,700,100</b>	