

State of Alaska
FY2025 Governor's Operating Budget

Department of Administration
Motor Vehicles
RDU/Component Budget Summary

RDU/Component: Motor Vehicles

Contribution to Department's Mission

To create, record and renew registration of vehicle ownership and provide testing, issuance, and reporting of driver licensing.

Results

(Additional performance information is available on the web at <https://omb.alaska.gov/results>.)

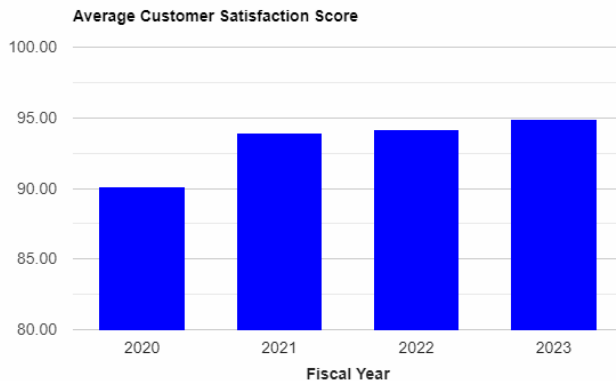
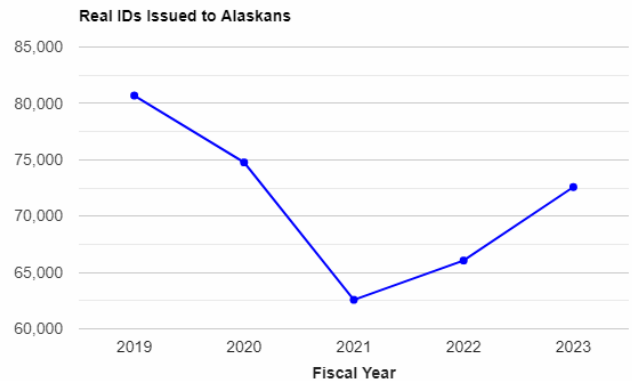
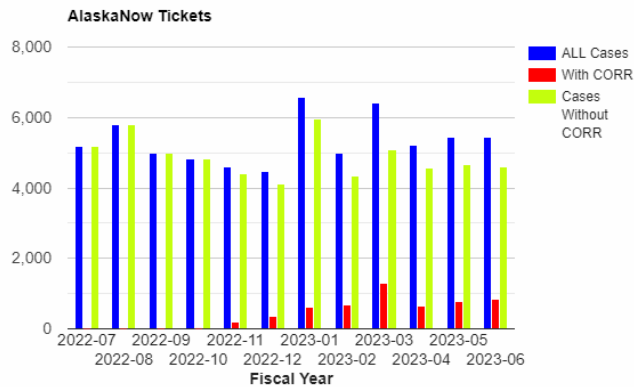
Core Services

- Provide licensing, registration, and title services via the internet, state-run offices, commissioned agents, and business partners.
- Remove driving privileges from unsafe and uninsured drivers.
- Accurately collect revenue and distribute fees collected on behalf of other agencies, municipalities, and boroughs.

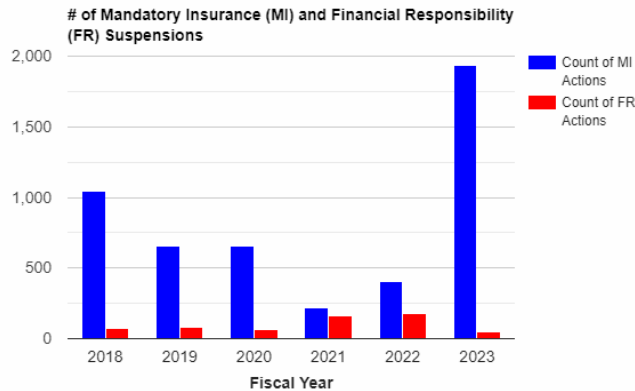
Measures by Core Service

(Additional performance information is available on the web at <https://omb.alaska.gov/results>.)

1. Provide licensing, registration, and title services via the internet, state-run offices, commissioned agents, and business partners.



2. Remove driving privileges from unsafe and uninsured drivers.



3. Accurately collect revenue and distribute fees collected on behalf of other agencies, municipalities, and boroughs.

Major Component Accomplishments in 2023

Real ID Progression – As of June 2023, the Division of Motor Vehicles (DMV) has issued 295,018 Real ID credentials. DMV issues on average about 5,075 Real IDs per month.

Crash Data Repository Online (CDR) was implemented in FY23. Customers have a single location to submit their crash data information and their proof of insurance which is submitted to DMV electronically. By eliminating the printing/mailing process it creates efficiencies for both the customer and the agency.

DMV Card Issuance Contract - DMV issued a Request for Proposal (RFP) for a new card issuance vendor. Working in coordination with the Commissioner’s Office, DMV sent an introductory notice to all known interested parties requesting feedback on E-Titling.

Key Component Challenges

Service and Commodity Price Increases - DMV has seen a substantial increase in both commodities and vendor services over the past year. DMV expects this trend to continue into FY2025. Most of these increases are due to the cost of materials, paper, postage, and shipping; as well as the lack of staffing and product availability for items such as the reflective sheeting required to produce vehicle tabs.

DMV Staff - MVCSR1 (range 10) positions are not competitive with today’s job market and when coupled with the detailed and complicated subject matter they must learn and be proficient in, employees often leave DMV to take higher paying positions within or outside State employment.

Fraud Activity – DMV is looking at creating a fraud unit which would be housed in the Vehicle Services Program area. We are continuing to experience driver license and vehicle title fraud and expect this trend to continue over time. Currently, senior managers are spending a lot of time dealing with fraud issues that would be better suited for a dedicated fraud unit.

Significant Changes in Results to be Delivered in FY2025

Commercial Driver License Program Improvement - DMV currently has a Commercial Driver License Program Improvement Grant from the Federal Motor Carrier Safety Administration. In FY2025, we look to work on the approved projects within that grant application, including reviewing and improving our commercial license knowledge testing capabilities.

DMV Card Issuance Contract - DMV posted an RFP for a new card issuance vendor. The new contract will likely include a new card design, new technology, new cameras, and a mobile driver's license option.

Request for Information (RFI) - DMV sent an introductory notice to all known interested parties requesting feedback on E-Titling.

Statutory and Regulatory Authority

AS 04.16	Alcoholic Beverages
AS 08.66	Motor Vehicle Dealers and Buyers' Agents
AS 12.55	Code of Criminal Procedure
AS 18.65.310	Identification Cards
AS 21.96	Motor Vehicle Insurance
AS 28	Motor Vehicles
AS 28.05	Powers and Duties
AS 28.10	Vehicle Registration, Liens, Title
AS 28.15	Driver's Licenses
AS 28.17	Commercial Driver Training Schools
AS 28.20	Motor Vehicle Safety Responsibility Act
AS 28.22	Uninsured and Underinsured Motorists Coverage
AS 28.33	Commercial Motor Vehicles
AS 28.35	Offenses Relating to Alcohol, Inhalants, and Controlled Substances; Implied Consent
2 AAC 90	Driver Licensing and Safety Responsibility
2 AAC 91	Driver Training Schools and Instructors
2 AAC 92	Vehicle Registration, Title, and Transfer
2 AAC 93	Hearings for Motor Vehicles and Driver Licensing
49 CFR	Federal Motor Carrier Safety Regulations
P.L. 109-13	The Real ID Act

Contact Information
<p>Contact: Jeffrey Schmitz, Director Phone: (907) 269-5574 E-mail: jeffrey.schmitz@alaska.gov</p>

Motor Vehicles Personal Services Information				
Authorized Positions			Personal Services Costs	
	FY2024 Management Plan	FY2025 Governor		
Full-time	143	143	Annual Salaries	7,919,155
Part-time	3	3	COLA	413,130
Nonpermanent	2	2	Premium Pay	432
			Annual Benefits	5,964,763
			<i>Less 7.00% Vacancy Factor</i>	(1,000,680)
			Lump Sum Premium Pay	0
Totals	148	148	Total Personal Services	13,296,800

Position Classification Summary					
Job Class Title	Anchorage	Fairbanks	Juneau	Others	Total
Accounting Clerk	3	0	0	0	3
Accounting Technician 1	2	0	0	0	2
Accounting Technician 2	1	0	0	0	1
Accounting Technician 3	1	0	0	0	1
Administrative Assistant 2	1	0	0	0	1
Administrative Assistant 3	1	0	0	0	1
Administrative Officer 1	1	0	0	0	1
Administrative Officer 2	1	0	0	0	1
Analyst/Programmer 3	1	0	0	0	1
Analyst/Programmer 4	0	1	0	0	1
Analyst/Programmer 5	2	0	0	0	2
Data Processing Manager 1	1	0	0	0	1
Deputy Director	1	0	0	0	1
Division Director - Px	1	0	0	0	1
Division Operations Manager	1	0	0	0	1
Dmv Program Manager	2	0	0	0	2
M/V Csr 1	45	8	3	12	68
M/V Csr 2	5	3	2	13	23
M/V Csr 3	9	0	1	1	11
Motor Vehicle Hearing Officer	2	0	0	0	2
Motor Vehicle Office Manager 1	7	1	1	2	11
Motor Vehicle Office Manager 2	4	1	0	0	5
Motor Vehicle Office Manager 3	1	0	0	0	1
Supply Technician 1	1	0	0	0	1
Supply Technician 2	1	0	0	0	1
Training Specialist 1	3	0	0	0	3
Training Specialist 2	1	0	0	0	1
Totals	99	14	7	28	148

Component Detail All Funds
Department of Administration

Component: Motor Vehicles (2348)
RDU: Division of Motor Vehicles (265)

Non-Formula Component

	FY2023 Actuals	FY2024 Enrolled	FY2024 Authorized	FY2024 Management Plan	FY2025 Governor Adjusted Base	FY2025 Governor	FY2024 Management Plan vs FY2025 Governor		
1000 Personal Services	10,772.4	12,671.5	12,671.5	12,534.3	13,296.8	13,296.8	762.5	6.1%	
2000 Travel	38.7	124.5	124.5	134.0	134.0	134.0	0.0	0.0%	
3000 Services	6,246.4	5,329.1	5,329.1	5,456.8	5,243.7	5,243.7	-213.1	-3.9%	
4000 Commodities	1,466.8	1,353.5	1,353.5	1,353.5	1,353.5	1,353.5	0.0	0.0%	
5000 Capital Outlay	0.0	0.0	0.0	0.0	0.0	0.0	0.0	0.0%	
7000 Grants, Benefits	0.0	0.0	0.0	0.0	0.0	0.0	0.0	0.0%	
8000 Miscellaneous	0.0	0.0	0.0	0.0	0.0	0.0	0.0	0.0%	
Totals	18,524.3	19,478.6	19,478.6	19,478.6	20,028.0	20,028.0	549.4	2.8%	
Fund Sources:									
1002 Fed Rcpts (Fed)	95.1	525.8	525.8	525.8	534.2	534.2	8.4	1.6%	
1005 GF/Prgm (DGF)	18,404.7	18,900.9	18,900.9	18,900.9	19,441.9	19,441.9	541.0	2.9%	
1007 I/A Rcpts (Other)	24.5	51.9	51.9	51.9	51.9	51.9	0.0	0.0%	
Unrestricted General (UGF)	0.0	0.0	0.0	0.0	0.0	0.0	0.0	0.0%	
Designated General (DGF)	18,404.7	18,900.9	18,900.9	18,900.9	19,441.9	19,441.9	541.0	2.9%	
Other Funds	24.5	51.9	51.9	51.9	51.9	51.9	0.0	0.0%	
Federal Funds	95.1	525.8	525.8	525.8	534.2	534.2	8.4	1.6%	
Positions:									
Permanent Full Time	144	143	143	143	143	143	0	0.0%	
Permanent Part Time	2	3	3	3	3	3	0	0.0%	
Non Permanent	2	2	2	2	2	2	0	0.0%	

Change Record Detail - Multiple Scenarios with Descriptions
Department of Administration

Component: Motor Vehicles (2348)
RDU: Division of Motor Vehicles (265)

Scenario/Change Record Title	Trans Type	Totals	Personal Services	Travel	Services	Commodities	Capital Outlay	Grants, Benefits	Miscellaneous	Positions		NP
										PFT	PPT	
***** Changes From FY2024 Enrolled To FY2024 Authorized *****												
FY2024 Enrolled	Enrolled	19,478.6	12,671.5	124.5	5,329.1	1,353.5	0.0	0.0	0.0	143	3	2
1002 Fed Rcpts		525.8										
1005 GF/Prgm		18,900.9										
1007 I/A Rcpts		51.9										
Subtotal		19,478.6	12,671.5	124.5	5,329.1	1,353.5	0.0	0.0	0.0	143	3	2
***** Changes From FY2024 Authorized To FY2024 Management Plan *****												
Align Authority with Anticipated Services Costs	LIT	0.0	-137.2	9.5	127.7	0.0	0.0	0.0	0.0	0	0	0
Transfer authority from personal services to cover anticipated travel and services costs. The remaining personal services authority is sufficient to cover anticipated expenditures.												
Subtotal		19,478.6	12,534.3	134.0	5,456.8	1,353.5	0.0	0.0	0.0	143	3	2
***** Changes From FY2024 Management Plan To FY2025 Governor Adjusted Base *****												
FY2025 Salary, Health Insurance, and PERS Rate Adjustments	SalAdj	549.4	549.4	0.0	0.0	0.0	0.0	0.0	0.0	0	0	0
1002 Fed Rcpts		8.4										
1005 GF/Prgm		541.0										
FY2025 Salary, Health Insurance, and PERS Rate Adjustments: \$549.4												
FY2025 AlaskaCare insurance from \$1,793 to \$1,908 per member per month: \$32.1												
FY2025 GGU health insurance from \$1,573.50 to \$1,579.50 per member per month: \$8.1												
FY2025 GGU 5% Cost of Living Adjustment: \$383.8												
FY2025 PERS Rate Adjustment from 25.10% to 26.76%: \$125.4												
Align Authority with Anticipated Services Costs	LIT	0.0	213.1	0.0	-213.1	0.0	0.0	0.0	0.0	0	0	0
Transfer authority from services to cover anticipated personal services costs. The remaining services authority is sufficient to cover anticipated expenditures.												
Subtotal		20,028.0	13,296.8	134.0	5,243.7	1,353.5	0.0	0.0	0.0	143	3	2
***** Changes From FY2025 Governor Adjusted Base To FY2025 Governor *****												
Totals		20,028.0	13,296.8	134.0	5,243.7	1,353.5	0.0	0.0	0.0	143	3	2

Line Item Detail (1676)
Department of Administration
Travel

Component: Motor Vehicles (2348)

Line Number	Line Name		FY2023 Actuals	FY2024 Management Plan	FY2025 Governor
2000	Travel		38.7	134.0	134.0
Object Class	Servicing Agency	Explanation	FY2023 Actuals	FY2024 Management Plan	FY2025 Governor
2000 Travel Detail Totals			38.7	134.0	134.0
2000	In-State Employee Travel	Transportation costs for travel relating to administration, training, conventions and meetings, boards and commissions.	28.1	72.7	72.7
2002	Out of State Employee Travel	Transportation costs for staff travel out of state to national organization meetings, conferences, and training.	10.6	61.3	61.3

Line Item Detail (1676)
Department of Administration
Services

Component: Motor Vehicles (2348)

Line Number	Line Name		FY2023 Actuals	FY2024 Management Plan	FY2025 Governor
3000	Services		6,246.4	5,456.8	5,243.7
Object Class	Servicing Agency	Explanation	FY2023 Actuals	FY2024 Management Plan	FY2025 Governor
3000 Services Detail Totals			6,246.4	5,456.8	5,243.7
3000	Education Services	Training, educational conferences, agency memberships, and employee tuition.	12.5	22.0	20.0
3001	Financial Services	Credit card and bank service fees. DMV does not budget these as a true cost. Legislative appropriation is included to account for these costs when they occur.	541.9	0.0	0.0
3003	Information Technology	Software licensing and maintenance, training, and consulting.	405.4	620.0	519.9
3004	Telecommunications	Local, long distance, and cellular telephone charges, television, data/network, telecommunication equipment, and other wireless charges from outside vendors.	176.1	211.6	211.6
3006	Delivery Services	Freight, courier services, and postage.	479.1	600.0	600.0
3007	Advertising and Promotions	Advertising, promotions and legal notices.	48.0	60.0	60.0
3008	Utilities	Electricity, heating fuel, water, sewage, and disposal services.	15.5	22.0	22.0
3009	Structure/Infrastructure/Land	Structure, infrastructure and land repairs, maintenance, rental, and leases.	21.0	32.9	32.9
3010	Equipment/Machinery	Machinery, furniture and office equipment purchase, repairs, maintenance, rentals, and leases.	35.2	59.0	59.0

Line Item Detail (1676)
Department of Administration
Services

Component: Motor Vehicles (2348)

Object Class		Servicing Agency	Explanation	FY2023 Actuals	FY2024 Management Plan	FY2025 Governor
3000 Services Detail Totals				6,246.4	5,456.8	5,243.7
3011	Other Services		DMV Business Partner fees and State Issued IDs. DMV does not budget these as a true cost. Legislative appropriation is included to account for these costs when they occur.	655.1	0.0	0.0
3011	Other Services		Safety Services and Printing/Copy/Graphics expenses.	692.9	782.0	723.0
3011	Other Services		E-Titling Operating Expenses for Capital Project.	0.0	0.0	0.0
3011	Other Services		Mobile Licensing and IDs (Develop & Implement).	0.0	0.0	0.0
3017	Inter-Agency Information Technology Non-Telecommunications	Admin - Alaska Division of IT (3141)	OIT Core Services (includes Adobe Pro and Microsoft 365 as well as services previously provided under the Telecommunications and Computer Services EPR).	411.1	478.0	455.0
3017	Inter-Agency Information Technology Non-Telecommunications	Admin - Alaska Division of IT (3141)	OIT Server Hosting and Storage.	174.8	198.6	191.0
3017	Inter-Agency Information Technology Non-Telecommunications	Admin - Alaska Division of IT (3141)	OIT Microsoft Software License.	25.1	34.8	34.8
3017	Inter-Agency Information Technology Non-Telecommunications	Admin - Alaska Division of IT (3141)	OIT Licenses (SQL Billing).	11.3	15.0	15.0
3017	Inter-Agency Information Technology Non-Telecommunications	Admin - Alaska Division of IT (3141)	OIT MICS Chargeback.	73.7	78.6	75.6
3017	Inter-Agency Information Technology Non-Telecommunications	Admin - Alaska Division of IT (3141)	RSA with OIT for Line of Business items.	599.9	0.0	0.0
3018	Inter-Agency Information Technology Telecommunications	Admin - Alaska Division of IT (3141)	OIT Telecommunications (CISCO device config, deployment, maintenance, replacements, and other telephone line services).	25.6	35.0	30.0
3019	Inter-Agency Storage	E&ED - Department-wide	Archive Digital Storage	0.3	0.3	0.3

Line Item Detail (1676)
Department of Administration
Services

Component: Motor Vehicles (2348)

Object Class		Servicing Agency	Explanation	FY2023 Actuals	FY2024 Management Plan	FY2025 Governor
3000 Services Detail Totals				6,246.4	5,456.8	5,243.7
3021	Inter-Agency Mail	Admin - Print Services (2333)	Centralized mail services chargeback.	5.7	8.5	8.5
3022	Inter-Agency Human Resources		Centralized Human Resource chargeback.	4.2	5.0	5.0
3022	Inter-Agency Human Resources	Admin - Personnel (56)	Human resource and payroll services provided by the Division of Personnel.	95.8	132.0	132.0
3022	Inter-Agency Human Resources	PubSaf - Department-wide	Fingerprinting for Employees.	34.8	42.2	38.8
3023	Inter-Agency Building Leases	Trans - Department-wide	Rent for state-owned facilities and lease payments.	1,201.6	1,236.0	1,236.0
3024	Inter-Agency Legal	Law - Department-wide	Legal services provided by the Department of Law.	13.3	35.0	30.0
3026	Inter-Agency Insurance	Admin - Risk Management (71)	Division of Risk Management - Risk management insurance charges.	16.7	17.6	17.6
3027	Inter-Agency Financial	Admin - Accounting (3134)	SSoA Accounts Payables and Travel chargeback.	44.9	55.0	50.0
3027	Inter-Agency Financial	Admin - Finance (59)	Division of Finance chargeback for IRIS FIN, HRM, and ALDER.	19.2	28.1	28.1
3028	Inter-Agency Americans with Disabilities Act Compliance	Admin - Personnel (56)	Americans with Disabilities Act (ADA) chargeback.	2.8	3.0	3.0
3029	Inter-Agency Education/Training	Admin - OFC of Procure. Property. Mngmt. (3291)	Internal department cost allocation chargeback, desktop support, procurement services	0.3	1.0	1.0
3036	Inter-Agency Safety	PubSaf - Department-wide	Reimbursable services agreement with the Department of Public Safety for Kotzebue office cost share.	62.6	63.5	63.5
3037	State Equipment Fleet	Trans - Department-wide	State equipment fleet chargeback for vehicle lease, maintenance, and fuel.	8.7	9.2	9.2
3038	Inter-Agency Management/Consulting	Admin - Administrative Services (46)	Administrative Services chargeback.	101.8	190.3	190.3
3038	Inter-Agency	Admin - OFC of Procure. Property.	SSoA Procurement Chargeback.	119.7	190.3	190.3

Line Item Detail (1676)
Department of Administration
Services

Component: Motor Vehicles (2348)

Object Class	Servicing Agency	Explanation	FY2023 Actuals	FY2024 Management Plan	FY2025 Governor
3000 Services Detail Totals			6,246.4	5,456.8	5,243.7
	Management/Consulting	Mngmt. (3291)			
3038	Inter-Agency Management/Consulting	Admin - Office of the Commissioner (45)	109.8	190.3	190.3

Line Item Detail (1676)
Department of Administration
Commodities

Component: Motor Vehicles (2348)

Line Number	Line Name		FY2023 Actuals	FY2024 Management Plan	FY2025 Governor
4000	Commodities		1,466.8	1,353.5	1,353.5
Object Class	Servicing Agency	Explanation	FY2023 Actuals	FY2024 Management Plan	FY2025 Governor
4000 Commodities Detail Totals			1,466.8	1,353.5	1,353.5
4000	Business	General business supplies such as office consumables, furniture, and computer equipment.	1,464.5	1,350.0	1,350.0
4002	Household/Institutional	Cleaning, food and other household supplies.	0.0	2.0	2.0
4003	Scientific and Medical		0.1	0.0	0.0
4004	Safety	Safety supplies, including fire suppression, personal protection gear.	1.7	0.0	0.0
4006	Signs and Markers	Signs and markers.	0.4	0.5	0.5
4011	Electrical	Electrical supplies.	0.0	1.0	1.0
4019	Small Tools/Minor Equipment	Maintenance and repair tools, small equipment.	0.1	0.0	0.0

Revenue Detail (1681)
Department of Administration

Component: Motor Vehicles (2348)

Revenue Type (OMB Fund Code) Revenue Source	Component	Comment	FY2023 Actuals	FY2024 Management Plan	FY2025 Governor
5002 Fed Rcpts (1002 Fed Rcpts)			95.1	525.8	534.2
5002 Federal General Government - Miscellaneous Grants		Commercial Driver's License compliance and training.	95.1	525.8	534.2
5005 GF/Prgm (1005 GF/Prgm)			51,357.1	52,900.6	19,441.9
5101 Program Receipts Public Protection - Licenses and Permits		Receipts generated from vehicle registration and titling, boat registration, driver licensing, and motor vehicle records.	51,356.2	52,900.6	19,441.9
5125 Program Receipts - Prior Year Reimbursement Recovery		Prior year recovery.	0.9	0.0	0.0
5007 I/A Rcpts (1007 I/A Rcpts)			24.5	51.9	51.9
5301 Inter-Agency Receipts	Admin - Motor Vehicles (2348)	Reimbursable services agreements with departments.	0.0	51.9	51.9
5301 Inter-Agency Receipts	Health - Department-wide	RSA with Vital Records for postage and lease reimbursement.	24.5	0.0	0.0

Inter-Agency Services (1682)
Department of Administration

Component: Motor Vehicles (2348)

				FY2023 Actuals	FY2024 Management Plan	FY2025 Governor
Component Totals				3,159.5	3,042.3	2,990.3
With Department of Administration				1,838.2	1,656.1	1,612.5
With Department of Education and Early Development				0.3	0.3	0.3
With Department of Public Safety				97.4	105.7	102.3
With Department of Transportation and Public Facilities				1,210.3	1,245.2	1,245.2
With Department of Law				13.3	35.0	30.0
Object Class	Servicing Agency	Explanation		FY2023 Actuals	FY2024 Management Plan	FY2025 Governor
3017	Inter-Agency Information Technology Non-Telecommunications	Admin - Alaska Division of IT (3141)	OIT Core Services (includes Adobe Pro and Microsoft 365 as well as services previously provided under the Telecommunications and Computer Services EPR).	411.1	478.0	455.0
3017	Inter-Agency Information Technology Non-Telecommunications	Admin - Alaska Division of IT (3141)	OIT Server Hosting and Storage.	174.8	198.6	191.0
3017	Inter-Agency Information Technology Non-Telecommunications	Admin - Alaska Division of IT (3141)	OIT Microsoft Software License.	25.1	34.8	34.8
3017	Inter-Agency Information Technology Non-Telecommunications	Admin - Alaska Division of IT (3141)	OIT Licenses (SQL Billing).	11.3	15.0	15.0
3017	Inter-Agency Information Technology Non-Telecommunications	Admin - Alaska Division of IT (3141)	OIT MICS Chargeback.	73.7	78.6	75.6
3017	Inter-Agency Information Technology Non-Telecommunications	Admin - Alaska Division of IT (3141)	RSA with OIT for Line of Business items.	599.9	0.0	0.0
3018	Inter-Agency Information Technology Telecommunications	Admin - Alaska Division of IT (3141)	OIT Telecommunications (CISCO device config, deployment, maintenance, replacements, and other telephone line services).	25.6	35.0	30.0
3019	Inter-Agency Storage	E&ED - Department-wide	Archive Digital Storage	0.3	0.3	0.3
3021	Inter-Agency Mail	Admin - Print Services (2333)	Centralized mail services chargeback.	5.7	8.5	8.5
3022	Inter-Agency Human Resources	Admin - Personnel (56)	Human resource and payroll	95.8	132.0	132.0

Inter-Agency Services (1682)
Department of Administration

Component: Motor Vehicles (2348)

Object Class	Servicing Agency	Explanation	FY2023 Actuals	FY2024 Management Plan	FY2025 Governor	
		services provided by the Division of Personnel.				
3022	Inter-Agency Human Resources	PubSaf - Department-wide	Fingerprinting for Employees.	34.8	42.2	38.8
3023	Inter-Agency Building Leases	Trans - Department-wide	Rent for state-owned facilities and lease payments.	1,201.6	1,236.0	1,236.0
3024	Inter-Agency Legal	Law - Department-wide	Legal services provided by the Department of Law.	13.3	35.0	30.0
3026	Inter-Agency Insurance	Admin - Risk Management (71)	Division of Risk Management - Risk management insurance charges.	16.7	17.6	17.6
3027	Inter-Agency Financial	Admin - Accounting (3134)	SSoA Accounts Payables and Travel chargeback.	44.9	55.0	50.0
3027	Inter-Agency Financial	Admin - Finance (59)	Division of Finance chargeback for IRIS FIN, HRM, and ALDER.	19.2	28.1	28.1
3028	Inter-Agency Americans with Disabilities Act Compliance	Admin - Personnel (56)	Americans with Disabilities Act (ADA) chargeback.	2.8	3.0	3.0
3029	Inter-Agency Education/Training	Admin - OFC of Procure. Property. Mngmt. (3291)	Internal department cost allocation chargeback, desktop support, procurement services	0.3	1.0	1.0
3036	Inter-Agency Safety	PubSaf - Department-wide	Reimbursable services agreement with the Department of Public Safety for Kotzebue office cost share.	62.6	63.5	63.5
3037	State Equipment Fleet	Trans - Department-wide	State equipment fleet chargeback for vehicle lease, maintenance, and fuel.	8.7	9.2	9.2
3038	Inter-Agency Management/Consulting	Admin - Administrative Services (46)	Administrative Services chargeback.	101.8	190.3	190.3
3038	Inter-Agency Management/Consulting	Admin - OFC of Procure. Property. Mngmt. (3291)	SSoA Procurement Chargeback.	119.7	190.3	190.3
3038	Inter-Agency Management/Consulting	Admin - Office of the Commissioner (45)		109.8	190.3	190.3

Personal Services Expenditure Detail
Department of Administration

Scenario: FY2025 Governor (20959)
Component: Motor Vehicles (2348)
RDU: Division of Motor Vehicles (265)

PCN	Job Class Title	Time Status	Retire Code	Barg Unit	Location	Salary Sched	Range / Step	Comp Months	Split / Count	Annual Salaries	COLA	Premium Pay	Annual Benefits	Total Costs	UGF Amount
02-9500	Administrative Officer 1	FT	A	SS	Anchorage	200	17B / C	12.0		65,181	0	0	48,558	113,739	0
02-9501	M/V Csr 1	FT	A	GP	Anchorage	200	10E / F	12.0		42,709	2,971	0	35,783	81,463	0
02-9502	M/V Csr 1	FT	A	GP	Anchorage	200	10C / D	12.0		40,214	2,797	0	34,806	77,817	0
02-9503	M/V Csr 1	FT	A	GP	Juneau	205	10L / M	12.0		53,432	3,717	0	39,979	97,128	0
02-9504	M/V Csr 1	FT	A	GP	Sitka	205	10J	12.0		49,257	3,427	0	38,345	91,029	0
02-9507	M/V Csr 1	FT	A	GP	Anchorage	200	10A / B	12.0		38,220	2,659	0	34,026	74,905	0
02-9508	M/V Csr 1	FT	A	GP	Soldotna	200	10A	12.0		37,538	2,611	0	33,759	73,908	0
02-9509	M/V Csr 1	FT	A	GP	Palmer	200	10B / C	12.0		39,751	2,765	0	34,625	77,141	0
02-9510	M/V Csr 1	FT	A	GP	Anchorage	200	10B / C	12.0		39,620	2,756	0	34,574	76,950	0
02-9511	M/V Csr 1	FT	A	GP	Anchorage	200	10A	12.0		37,538	2,611	0	33,759	73,908	0
02-9513	M/V Csr 3	FT	A	GP	Anchorage	200	14E / F	12.0		57,203	3,979	0	41,454	102,636	0
02-9514	Analyst/Programmer 3	FT	A	GP	Anchorage	200	18N	12.0		92,157	6,411	0	55,132	153,700	0
02-9515	M/V Csr 1	FT	A	GG	Fairbanks	99	10S / T	12.0		67,080	4,666	0	45,319	117,065	0
02-9516	M/V Csr 1	FT	A	GP	Fairbanks	203	10K / L	12.0		50,575	3,518	0	38,861	92,954	0
02-9517	M/V Csr 1	FT	A	GP	Anchorage	200	10E / F	12.0		42,383	2,948	0	35,655	80,986	0
02-9519	M/V Csr 1	FT	A	GP	Anchorage	200	10B / C	12.0		39,577	2,753	0	34,557	76,887	0
02-9520	M/V Csr 1	FT	A	GP	Anchorage	200	10F / G	12.0		44,985	3,129	0	36,673	84,787	0
02-9521	M/V Csr 1	FT	A	GP	Palmer	200	10B / C	12.0		39,501	2,748	0	34,527	76,776	0
02-9522	M/V Csr 1	FT	A	GP	Anchorage	200	10B / C	12.0		39,413	2,742	0	34,493	76,648	0
02-9523	M/V Csr 2	FT	A	GP	Bethel	250	12E / F	12.0		73,483	5,112	0	47,825	126,420	0
02-9525	Deputy Director	FT	A	XE	Anchorage	N00	25A / B	12.0		104,118	0	0	63,650	167,768	0
02-N17006	Administrative Assistant 2	NP	N	GP	Anchorage	200	14C	10.0		42,819	2,406	0	21,189	66,414	0
02-N17010	Training Specialist 1	NP	N	GP	Anchorage	200	16C	9.0		44,328	2,491	0	19,786	66,605	0
08-2226	M/V Csr 1	FT	A	GP	Tok	200	10A / B	12.0		38,630	2,687	0	34,187	75,504	0
12-4701	Analyst/Programmer 5	FT	A	GP	Anchorage	200	22B / C	12.0		86,929	6,047	0	53,086	146,062	0
12-5101	Division Director - Px	FT	A	XE	Anchorage	N00	27J / K	12.0		136,677	0	0	76,390	213,067	0
12-5103	Administrative Assistant 3	FT	A	GP	Anchorage	200	15C	12.0		55,205	3,840	0	40,672	99,717	0
12-5104	Accounting Technician 2	FT	A	GP	Anchorage	200	14B / C	12.0		49,943	3,474	0	38,613	92,030	0
12-5107	Accounting Technician 1	FT	A	GP	Anchorage	200	12A	12.0		42,296	2,942	0	35,621	80,859	0
12-5109	Administrative Officer 2	FT	A	SS	Anchorage	200	19A / B	12.0		74,214	0	0	52,093	126,307	0
12-5114	M/V Csr 2	FT	A	GP	Anchorage	200	12C / D	12.0		45,714	3,180	0	36,959	85,853	0
12-5115	Accounting Technician 3	FT	A	GP	Anchorage	200	16L	12.0		75,621	5,261	0	48,661	129,543	0
12-5116	Accounting Clerk	FT	A	GP	Anchorage	200	10B / C	12.0		39,642	2,758	0	34,583	76,983	0
12-5117	Accounting Clerk	FT	A	GP	Anchorage	200	10G	12.0		45,045	3,134	0	36,697	84,876	0
12-5118	Accounting Clerk	FT	A	GP	Anchorage	200	10J	12.0		46,917	3,264	0	37,429	87,610	0
12-5119	M/V Csr 1	FT	A	GP	Anchorage	200	10B / C	12.0		39,882	2,774	0	34,676	77,332	0
12-5120	M/V Csr 2	FT	A	GP	Soldotna	200	12C / D	12.0		45,380	3,157	0	36,828	85,365	0
12-5202	M/V Csr 1	FT	A	GP	Anchorage	200	10K	12.0		48,438	3,370	0	38,024	89,832	0

Note: If a position is split, an asterisk (*) will appear in the Split/Count column. If the split position is also counted in the component, two asterisks (**) will appear in this column. [No valid job title] appearing in the Job Class Title indicates that the PCN has an invalid class code or invalid range for the class code effective date of this scenario.

Personal Services Expenditure Detail
Department of Administration

Scenario: FY2025 Governor (20959)
Component: Motor Vehicles (2348)
RDU: Division of Motor Vehicles (265)

PCN	Job Class Title	Time Status	Retire Code	Barg Unit	Location	Salary Sched	Range / Step	Comp Months	Split / Count	Annual Salaries	COLA	Premium Pay	Annual Benefits	Total Costs	UGF Amount
12-5203	Dmv Program Manager	FT	A	SS	Anchorage	200	21E / F	12.0		94,349	0	0	59,971	154,320	0
12-5206	Division Operations Manager	FT	A	SS	Anchorage	200	24C	12.0		107,120	0	0	64,969	172,089	0
12-5208	Training Specialist 2	FT	A	SS	Anchorage	200	18E / F	12.0		78,031	0	0	53,586	131,617	0
12-5209	M/V Csr 1	FT	A	GP	Anchorage	200	10E / F	12.0		42,383	2,948	0	35,655	80,986	0
12-5210	M/V Csr 1	FT	A	GP	Anchorage	200	10N / O	12.0		54,398	3,784	0	40,357	98,539	0
12-5211	M/V Csr 1	FT	A	GP	Juneau	205	10B / C	12.0		40,844	2,841	0	35,053	78,738	0
12-5212	M/V Csr 3	FT	A	GP	Anchorage	200	14A / B	12.0		49,665	3,455	0	38,505	91,625	0
12-5213	M/V Csr 1	FT	A	GP	Anchorage	200	10A / B	12.0		38,630	2,687	0	34,187	75,504	0
12-5214	M/V Csr 2	FT	A	GP	Juneau	205	12G	12.0		53,957	3,754	0	40,184	97,895	0
12-5216	M/V Csr 1	FT	A	GP	Anchorage	200	10C / D	12.0		41,087	2,858	0	35,148	79,093	0
12-5217	M/V Csr 1	FT	A	GP	Juneau	205	10B / C	12.0		41,914	2,916	0	35,472	80,302	0
12-5220	Motor Vehicle Office Manager 1	FT	A	SS	Juneau	205	15E / F	12.0		67,392	0	0	49,423	116,815	0
12-5221	Motor Vehicle Office Manager 1	FT	A	SS	Anchorage	200	15C / D	12.0		59,710	0	0	46,417	106,127	0
12-5222	Motor Vehicle Hearing Officer	FT	A	GP	Anchorage	99	18P	12.0		99,178	6,899	0	57,879	163,956	0
12-5223	Motor Vehicle Hearing Officer	FT	A	GP	Anchorage	200	18L	12.0		86,444	6,013	0	52,896	145,353	0
12-5231	M/V Csr 1	FT	A	GP	Anchorage	200	10C / D	12.0		40,741	2,834	0	35,013	78,588	0
12-5232	Analyst/Programmer 4	FT	A	GP	Fairbanks	203	20B / C	12.0		77,869	5,417	0	49,541	132,827	0
12-5234	M/V Csr 3	FT	A	GP	Juneau	205	14C	12.0		53,957	3,754	0	40,184	97,895	0
12-5236	M/V Csr 2	FT	A	GP	Juneau	205	12C / D	12.0		47,523	3,306	0	37,666	88,495	0
12-5238	M/V Csr 1	FT	A	GP	Anchorage	200	10A / B	12.0		38,630	2,687	0	34,187	75,504	0
12-5239	M/V Csr 1	FT	A	GP	Eagle River	200	10C / D	12.0		40,722	2,833	0	35,005	78,560	0
12-5303	M/V Csr 1	FT	A	GP	Anchorage	200	10C / D	12.0		40,041	2,785	0	34,739	77,565	0
12-5304	M/V Csr 1	FT	A	GP	Fairbanks	203	10A	12.0		38,669	2,690	0	34,202	75,561	0
12-5305	Accounting Technician 1	FT	A	GP	Anchorage	200	12G / J	12.0		52,293	3,638	0	39,533	95,464	0
12-5306	Motor Vehicle Office Manager 1	FT	A	SS	Soldotna	200	15B / C	12.0		58,093	0	0	45,784	103,877	0
12-5307	M/V Csr 3	FT	A	GP	Ketchikan	200	14B / C	12.0		49,775	3,463	0	38,548	91,786	0
12-5309	M/V Csr 1	FT	A	GP	Anchorage	200	10C / D	12.0		40,511	2,818	0	34,923	78,252	0
12-5311	M/V Csr 2	FT	A	GP	Soldotna	200	12A / B	12.0		43,602	3,033	0	36,132	82,767	0
12-5313	M/V Csr 2	FT	A	GP	Homer	200	12G / J	12.0		53,567	3,726	0	40,031	97,324	0
12-5317	M/V Csr 3	FT	A	GP	Anchorage	200	14C / D	12.0		53,200	3,701	0	39,888	96,789	0
12-5319	Motor Vehicle Office Manager 2	FT	A	SS	Fairbanks	203	17J / K	12.0		79,809	0	0	54,282	134,091	0
12-5320	Motor Vehicle Office	FT	A	SS	Anchorage	200	15B / C	12.0		57,507	0	0	45,555	103,062	0

Note: If a position is split, an asterisk (*) will appear in the Split/Count column. If the split position is also counted in the component, two asterisks (**) will appear in this column. [No valid job title] appearing in the Job Class Title indicates that the PCN has an invalid class code or invalid range for the class code effective date of this scenario.

Personal Services Expenditure Detail
Department of Administration

Scenario: FY2025 Governor (20959)
Component: Motor Vehicles (2348)
RDU: Division of Motor Vehicles (265)

PCN	Job Class Title	Time Status	Retire Code	Barg Unit	Location	Salary Sched	Range / Step	Comp Months	Split / Count	Annual Salaries	COLA	Premium Pay	Annual Benefits	Total Costs	UGF Amount
	Manager 1														
12-5321	M/V Csr 2	FT	A	GP	Fairbanks	99	12R	12.0		72,599	5,050	0	47,479	125,128	0
12-5322	M/V Csr 2	FT	A	GP	Fairbanks	203	12M / N	12.0		61,215	4,258	0	43,024	108,497	0
12-5323	M/V Csr 2	FT	A	GP	Fairbanks	203	12A	12.0		43,563	3,030	0	36,117	82,710	0
12-5324	Motor Vehicle Office	FT	A	SS	Fairbanks	203	15E / F	12.0		64,738	0	0	48,385	113,123	0
	Manager 1														
12-5325	M/V Csr 1	FT	A	GP	Anchorage	200	10A / B	12.0		38,630	2,687	0	34,187	75,504	0
12-5326	M/V Csr 1	FT	A	GP	Fairbanks	203	10C / D	12.0		41,185	2,865	0	35,186	79,236	0
12-5328	M/V Csr 1	FT	A	GP	Fairbanks	203	10G / J	12.0		48,321	3,361	0	37,979	89,661	0
12-5329	Dmv Program Manager	FT	A	SS	Anchorage	200	21A / B	12.0		84,210	0	0	56,004	140,214	0
12-5332	M/V Csr 1	FT	A	GP	Fairbanks	203	10A	12.0		38,669	2,690	0	34,202	75,561	0
12-5333	M/V Csr 1	FT	A	GP	Fairbanks	203	10D / E	12.0		42,825	2,979	0	35,828	81,632	0
12-5335	M/V Csr 2	PT	A	GP	Delta Junction	99	12R	12.0		75,426	5,247	0	39,050	119,723	0
12-5336	M/V Csr 2	PT	A	GP	Haines	200	12J	12.0		53,567	3,726	0	30,496	87,789	0
12-5338	Motor Vehicle Office	FT	A	SS	Anchorage	200	17E / F	12.0		72,218	0	0	51,312	123,530	0
	Manager 2														
12-5339	Supply Technician 2	FT	A	GP	Anchorage	200	12G / J	12.0		51,565	3,587	0	39,248	94,400	0
12-5341	M/V Csr 2	FT	A	GP	Valdez	211	12A / B	12.0		48,399	3,367	0	38,009	89,775	0
12-5344	M/V Csr 3	FT	A	GP	Anchorage	200	14B / C	12.0		50,852	3,538	0	38,969	93,359	0
12-5345	M/V Csr 1	FT	A	GP	Anchorage	200	10A / B	12.0		38,393	2,671	0	34,094	75,158	0
12-5346	M/V Csr 1	FT	A	GP	Anchorage	200	10B / C	12.0		39,620	2,756	0	34,574	76,950	0
12-5347	M/V Csr 1	FT	A	GP	Anchorage	200	10C / D	12.0		40,300	2,803	0	34,840	77,943	0
12-5349	M/V Csr 1	FT	A	GP	Anchorage	200	10B / C	12.0		39,544	2,751	0	34,544	76,839	0
12-5350	M/V Csr 1	FT	A	GP	Anchorage	200	10B / C	12.0		39,882	2,774	0	34,676	77,332	0
12-5351	M/V Csr 1	FT	A	GP	Palmer	99	10O	12.0		55,302	3,847	0	40,710	99,859	0
12-5352	Motor Vehicle Office	FT	A	SS	Anchorage	200	15E / F	12.0		64,750	0	0	48,389	113,139	0
	Manager 1														
12-5355	M/V Csr 2	FT	A	GP	Anchorage	200	12A / B	12.0		43,602	3,033	0	36,132	82,767	0
12-5356	Motor Vehicle Office	FT	A	SS	Anchorage	200	15D / E	12.0		61,202	0	0	47,001	108,203	0
	Manager 1														
12-5357	M/V Csr 1	FT	A	GP	Anchorage	200	10D / E	12.0		42,215	2,937	0	35,589	80,741	0
12-5358	Motor Vehicle Office	FT	A	SS	Anchorage	600	17B / C	12.0		66,338	0	0	49,011	115,349	0
	Manager 2														
12-5359	M/V Csr 3	FT	A	GP	Anchorage	200	14L / M	12.0		67,288	4,681	0	45,400	117,369	0
12-5360	M/V Csr 2	FT	A	GP	Anchorage	200	12C / D	12.0		45,218	3,146	0	36,764	85,128	0
12-5362	M/V Csr 1	FT	A	GP	Palmer	200	10A / B	12.0		38,630	2,687	0	34,187	75,504	0
12-5363	M/V Csr 2	FT	A	GP	Palmer	200	12P	12.0		64,877	4,513	0	44,457	113,847	0
12-5364	M/V Csr 1	FT	A	GP	Anchorage	200	10G	12.0		45,045	3,134	0	36,697	84,876	0

Note: If a position is split, an asterisk (*) will appear in the Split/Count column. If the split position is also counted in the component, two asterisks (**) will appear in this column. [No valid job title] appearing in the Job Class Title indicates that the PCN has an invalid class code or invalid range for the class code effective date of this scenario.

Personal Services Expenditure Detail
Department of Administration

Scenario: FY2025 Governor (20959)
Component: Motor Vehicles (2348)
RDU: Division of Motor Vehicles (265)

PCN	Job Class Title	Time Status	Retire Code	Barg Unit	Location	Salary Sched	Range / Step	Comp Months	Split / Count	Annual Salaries	COLA	Premium Pay	Annual Benefits	Total Costs	UGF Amount
12-5365	M/V Csr 1	FT	A	GP	Anchorage	200	10C / D	12.0		40,041	2,785	0	34,739	77,565	0
12-5366	M/V Csr 3	FT	A	GP	Anchorage	200	14C / D	12.0		52,332	3,640	0	39,548	95,520	0
12-5367	M/V Csr 1	FT	A	GP	Anchorage	200	10A	12.0		37,538	2,611	0	33,759	73,908	0
12-5368	M/V Csr 1	FT	A	GP	Anchorage	200	10C / D	12.0		40,415	2,811	0	34,885	78,111	0
12-5369	M/V Csr 1	FT	A	GP	Anchorage	200	10C / D	12.0		40,281	2,802	0	34,833	77,916	0
12-5370	M/V Csr 1	FT	A	GP	Anchorage	200	10N	12.0		53,313	3,709	0	39,932	96,954	0
12-5371	M/V Csr 1	FT	A	GP	Eagle River	200	10A / B	12.0		38,630	2,687	0	34,187	75,504	0
12-5372	M/V Csr 1	FT	A	GP	Anchorage	200	10C / D	12.0		40,080	2,788	0	34,754	77,622	0
12-5373	M/V Csr 1	FT	A	GP	Palmer	200	10A / B	12.0		38,630	2,687	0	34,187	75,504	0
12-5376	M/V Csr 1	FT	A	GP	Anchorage	200	10B / C	12.0		38,717	2,693	0	34,221	75,631	0
12-5377	M/V Csr 3	FT	A	GP	Anchorage	200	14A / B	12.0		49,665	3,455	0	38,505	91,625	0
12-5378	M/V Csr 2	FT	A	GG	Palmer	99	12P / Q	12.0		66,937	4,656	0	45,263	116,856	0
12-5379	Training Specialist 1	FT	A	GP	Anchorage	200	16D / E	12.0		63,062	4,387	0	43,747	111,196	0
12-5382	Motor Vehicle Office Manager 1	FT	A	SS	Anchorage	200	15F / J	12.0		65,363	0	0	48,629	113,992	0
12-5383	Motor Vehicle Office Manager 1	FT	A	SS	Palmer	200	15M / N	12.0		74,865	0	0	52,347	127,212	0
12-5384	M/V Csr 1	FT	A	GP	Anchorage	200	10M / N	12.0		53,313	3,709	0	39,932	96,954	0
12-5385	Motor Vehicle Office Manager 2	FT	A	SS	Anchorage	200	17C / D	12.0		68,883	0	0	50,007	118,890	0
12-5386	M/V Csr 1	FT	A	GP	Eagle River	200	10D / E	12.0		41,469	2,885	0	35,297	79,651	0
12-5387	M/V Csr 1	FT	A	GP	Kodiak	211	10C / D	12.0		45,171	3,142	0	36,746	85,059	0
12-5393	M/V Csr 3	FT	A	GP	Anchorage	200	14C / D	12.0		52,589	3,658	0	39,649	95,896	0
12-5403	M/V Csr 1	FT	A	GP	Ketchikan	200	10A / B	12.0		38,347	2,668	0	34,076	75,091	0
12-5405	M/V Csr 1	FT	A	GP	Anchorage	200	10G / J	12.0		46,215	3,215	0	37,155	86,585	0
12-5406	M/V Csr 1	FT	A	GP	Anchorage	200	10B / C	12.0		39,392	2,740	0	34,485	76,617	0
12-5407	Motor Vehicle Office Manager 3	FT	A	SS	Anchorage	200	20A / B	12.0		78,642	0	0	53,825	132,467	0
12-5409	M/V Csr 2	FT	A	GP	Anchorage	200	12B / C	12.0		44,949	3,127	0	36,659	84,735	0
12-5410	M/V Csr 2	FT	A	GP	Sitka	205	12B / C	12.0		47,294	3,290	0	37,577	88,161	0
12-5412	M/V Csr 2	FT	A	GP	Kodiak	211	12B / C	12.0		49,252	3,426	0	38,343	91,021	0
12-5417	Analyst/Programmer 5	FT	A	GP	Anchorage	200	22A / B	12.0		86,229	5,999	0	52,812	145,040	0
12-5428	Motor Vehicle Office Manager 1	FT	A	SS	Anchorage	200	15A	12.0		54,371	0	0	44,328	98,699	0
12-5430	M/V Csr 1	FT	A	GP	Anchorage	200	10C / D	12.0		40,530	2,819	0	34,930	78,279	0
12-5431	M/V Csr 1	FT	A	GP	Soldotna	200	10C / D	12.0		40,991	2,852	0	35,110	78,953	0
12-5433	M/V Csr 2	FT	A	GP	Palmer	200	12O	12.0		62,829	4,371	0	43,656	110,856	0
12-5434	M/V Csr 2	FT	A	GP	Ketchikan	200	12C / D	12.0		45,195	3,144	0	36,755	85,094	0
12-5442	Supply Technician 1	FT	A	GP	Anchorage	200	10C / D	12.0		40,722	2,833	0	35,005	78,560	0

Note: If a position is split, an asterisk (*) will appear in the Split/Count column. If the split position is also counted in the component, two asterisks (**) will appear in this column. [No valid job title] appearing in the Job Class Title indicates that the PCN has an invalid class code or invalid range for the class code effective date of this scenario.

Personal Services Expenditure Detail
Department of Administration

Scenario: FY2025 Governor (20959)
Component: Motor Vehicles (2348)
RDU: Division of Motor Vehicles (265)

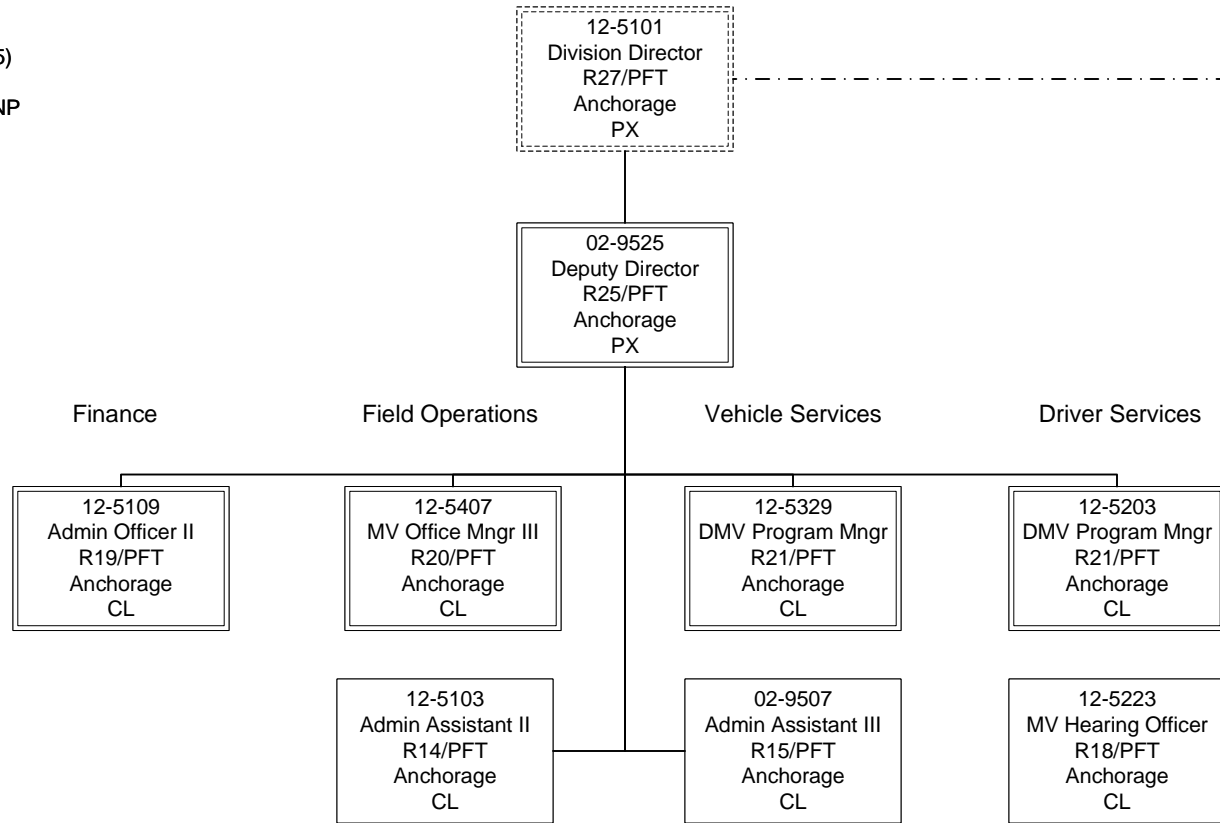
PCN	Job Class Title	Time Status	Retire Code	Barg Unit	Location	Salary Sched	Range / Step	Comp Months	Split / Count	Annual Salaries	COLA	Premium Pay	Annual Benefits	Total Costs	UGF Amount
12-5443	M/V Csr 1	PT	A	GP	Anchorage	200	10F / G	12.0		44,372	3,087	0	26,898	74,357	0
12-5444	Motor Vehicle Office Manager 1	FT	A	SS	Anchorage	200	15B / C	12.0		56,513	0	0	45,166	101,679	0
12-5445	M/V Csr 1	FT	A	GP	Anchorage	200	10B / C	12.0		38,815	2,700	0	34,259	75,774	0
12-5447	M/V Csr 2	FT	A	GP	Anchorage	200	12B / C	12.0		44,961	3,128	0	36,664	84,753	0
12-5448	M/V Csr 3	FT	A	GP	Anchorage	99	14O	12.0		72,599	5,050	0	47,479	125,128	0
12-5449	Training Specialist 1	FT	A	GP	Anchorage	200	16B / C	12.0		59,013	4,105	0	42,162	105,280	0
12-5452	Data Processing Manager 1	FT	A	SS	Anchorage	200	22C / D	12.0		102,136	0	432	63,187	165,755	0
12-5453	M/V Csr 1	FT	A	GP	Fairbanks	203	10C / D	12.0		41,235	2,869	0	35,206	79,310	0
12-5454	M/V Csr 1	FT	A	GP	Anchorage	200	10B / C	12.0		39,403	2,741	0	34,489	76,633	0
12-5472	M/V Csr 1	FT	A	GP	Anchorage	200	10C / D	12.0		40,761	2,836	0	35,020	78,617	0
12-5477	M/V Csr 1	FT	A	GP	Homer	200	10E / F	12.0		42,580	2,962	0	35,732	81,274	0
12-6012	Motor Vehicle Office Manager 2	FT	A	SS	Anchorage	200	17B / C	12.0		67,101	0	0	49,309	116,410	0

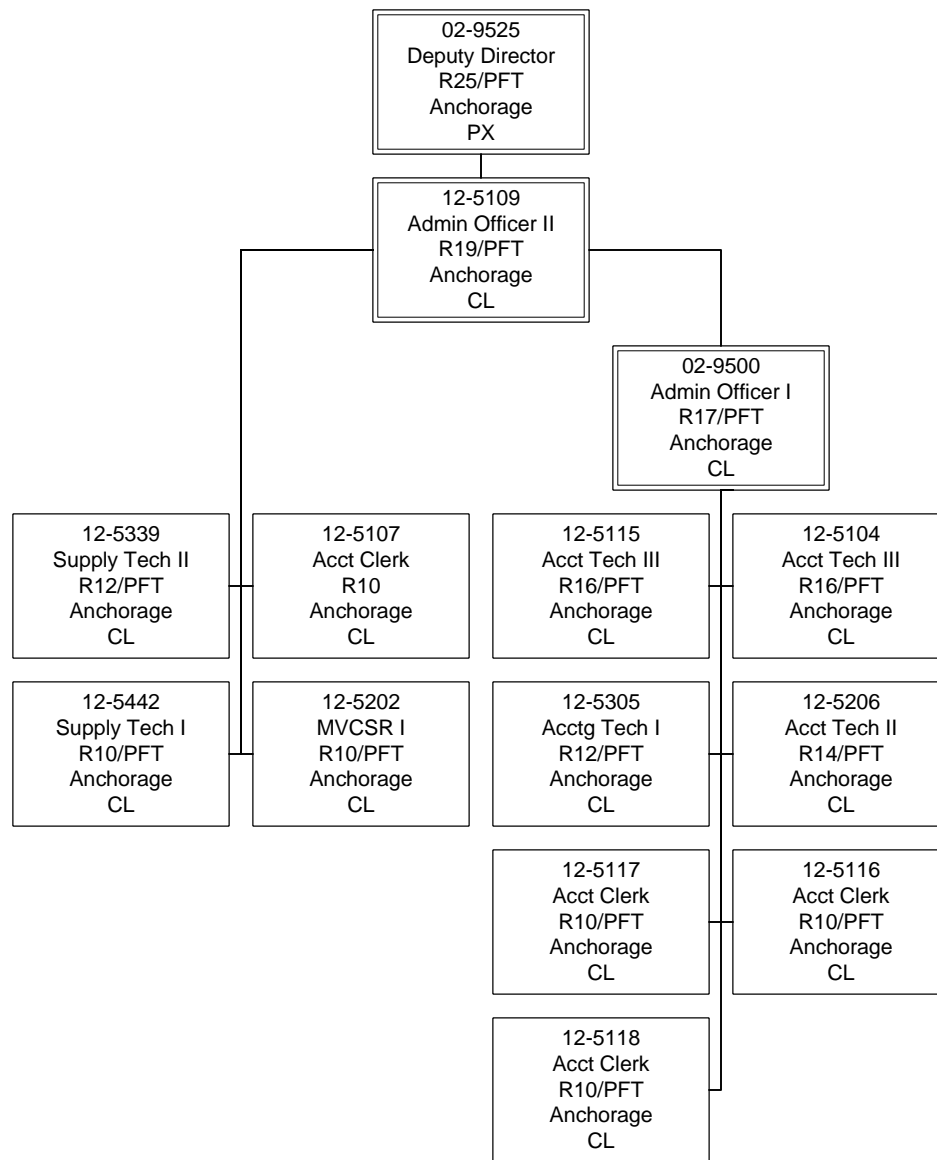
	Total Positions	New	Deleted	Total Salary Costs:	7,919,155
Full Time Positions:	143	0	0	Total COLA:	413,130
Part Time Positions:	3	0	0	Total Premium Pay:	432
Non Permanent Positions:	2	0	0	Total Benefits:	5,964,763
Positions in Component:	148	0	0	Total Pre-Vacancy:	14,297,480
				Minus Vacancy Adjustment of 7.00%:	(1,000,680)
				Total Post-Vacancy:	13,296,800
				Plus Lump Sum Premium Pay:	0
				Personal Services Line 100:	13,296,800

PCN Funding Sources:	Pre-Vacancy	Post-Vacancy	Percent
1002 Federal Receipts	229,968	213,873	1.61%
1005 General Fund/Program Receipts	14,067,512	13,082,927	98.39%
Total PCN Funding:	14,297,480	13,296,800	100.00%

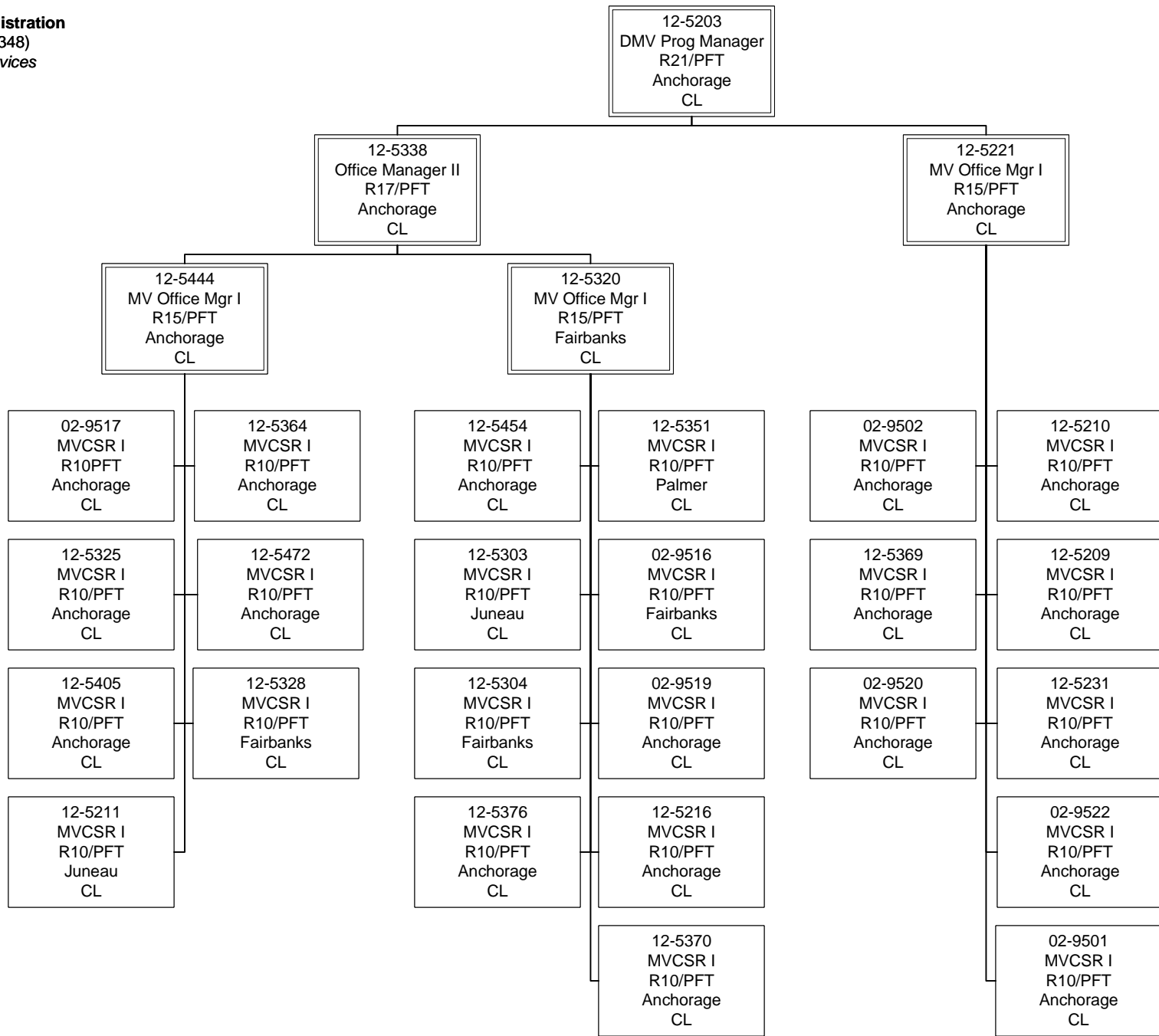
Note: If a position is split, an asterisk (*) will appear in the Split/Count column. If the split position is also counted in the component, two asterisks (**) will appear in this column. [No valid job title] appearing in the Job Class Title indicates that the PCN has an invalid class code or invalid range for the class code effective date of this scenario.

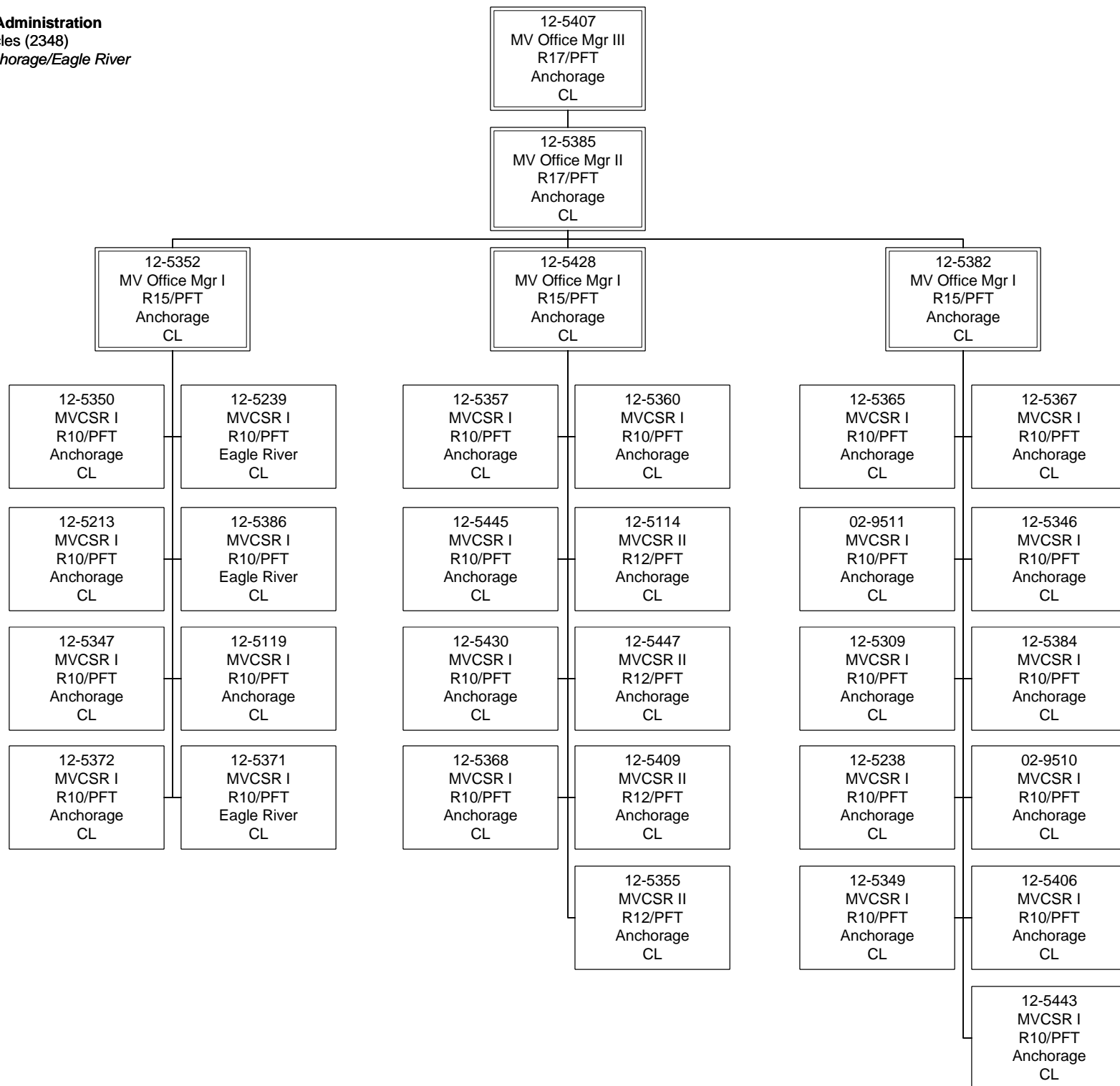
Department of Administration
Motor Vehicles (2348)
RDU: Division of Motor Vehicles (265)
FY2023 Governor's Budget
Position Totals: 143 PFT | 3 PPT | 2 NP
Policy and Management



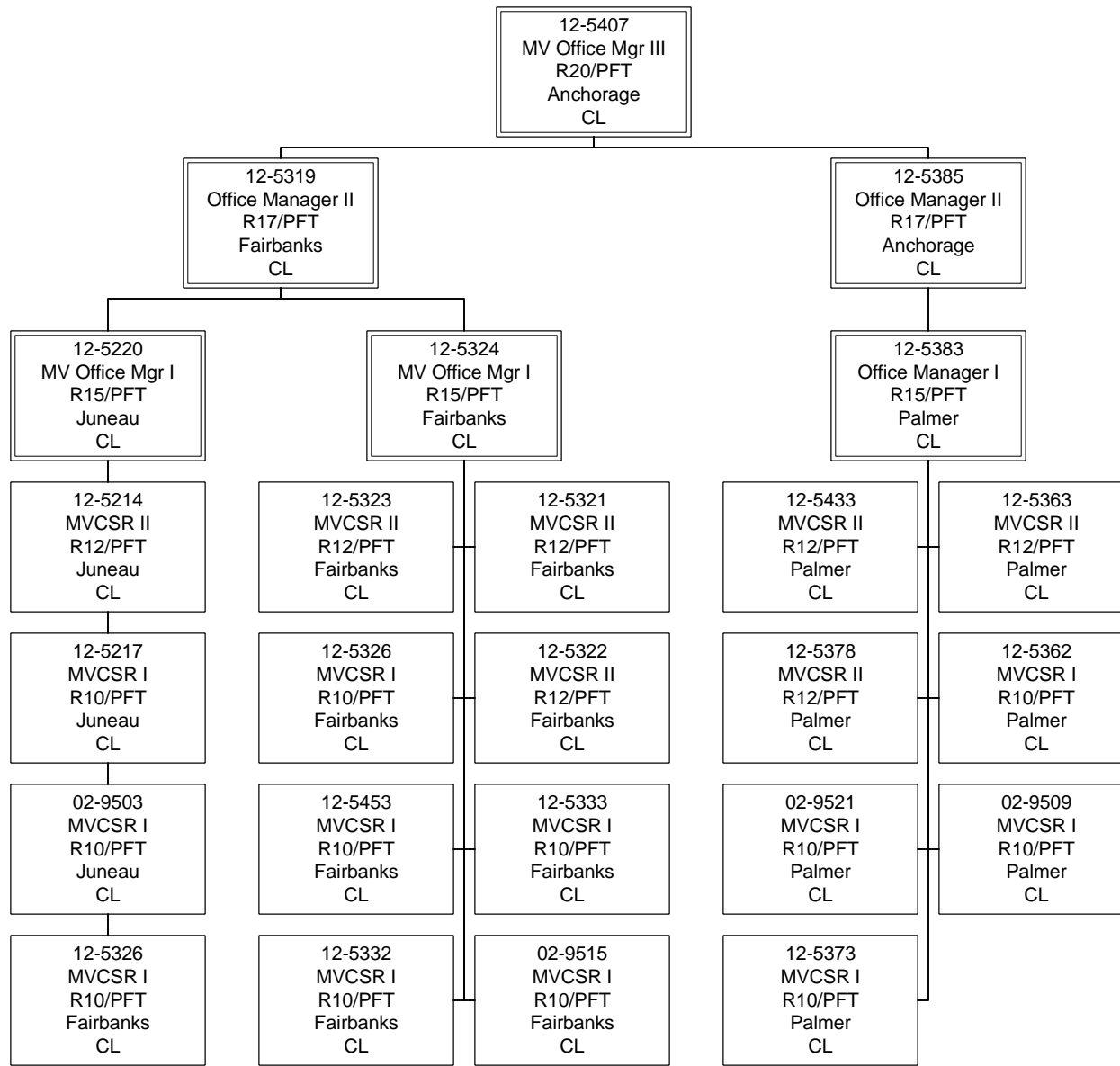


Department of Administration
Motor Vehicles (2348)
Driver License Services

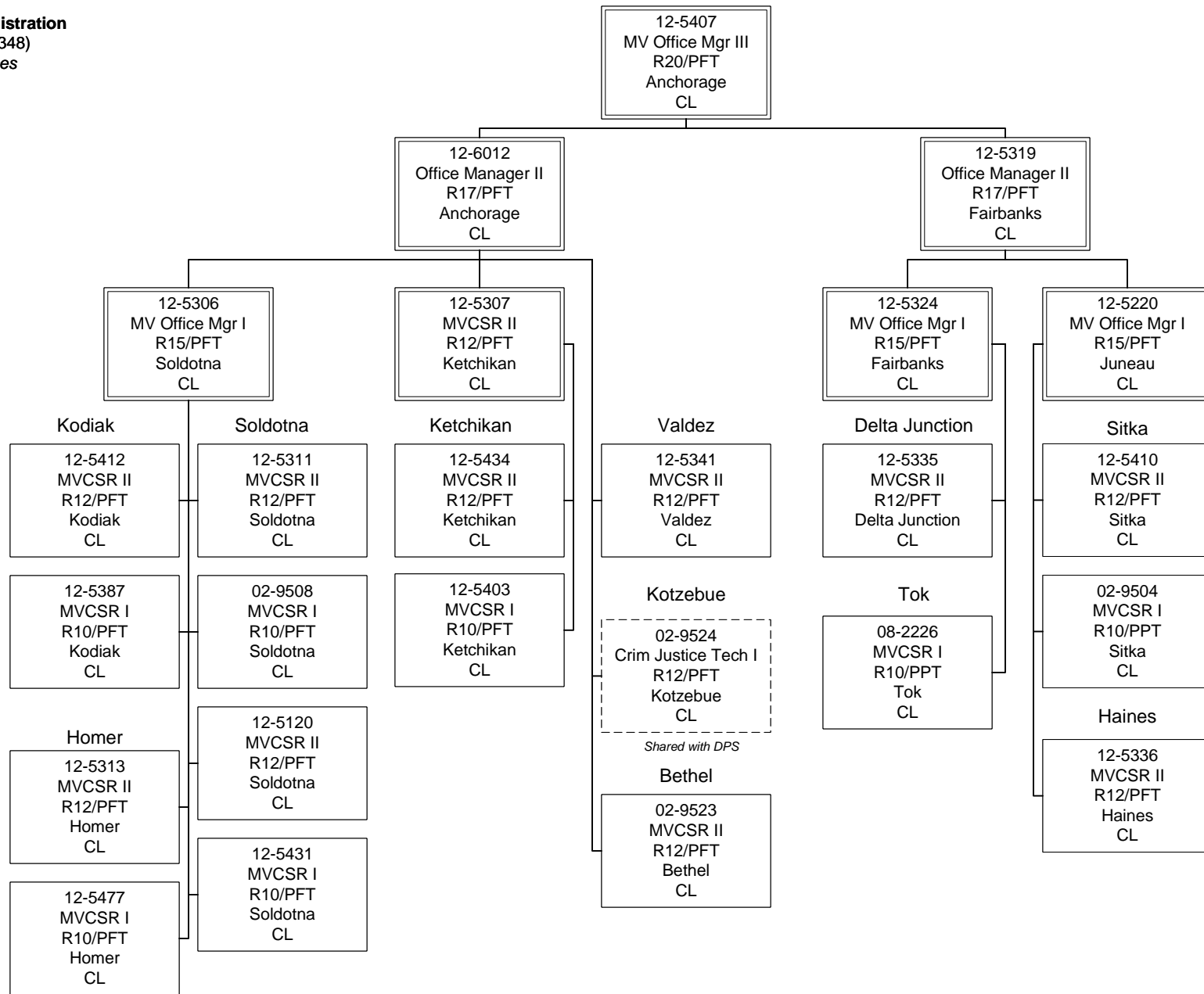




Department of Administration
Motor Vehicles (2348)
Mid Size Offices



Department of Administration
Motor Vehicles (2348)
Small Size Offices



Department of Administration
Motor Vehicles (2348)
Vehicle Services

12-5101
Division Director
R27/PFT
Anchorage
PX

12-5329
DMV Program Mngr
R21/PFT
Anchorage
CL

12-5208
Training Spec II
R18/PFT
Anchorage
CL

12-5222
MV Hearing Officer
R18/PFT
Anchorage
CL

12-5223
MV Hearing Officer
R18/PFT
Anchorage
CL

12-5358
MV Office Mngr II
R17/PFT
Anchorage
CL

12-5356
MV Office Mgr I
R15/PFT
Anchorage
CL

12-5448
MVCSR III
R14/PFT
Anchorage
CL

12-5345
MVCSR I
R10/PFT
Anchorage
CL

12-5212
MVCSR III
R14/PFT
Anchorage
CL

12-5344
MVCSR III
R14/PFT
Anchorage
CL

12-5379
Training Spec I
R16/PFT
Anchorage
CL

12-5359
MVCSR III
R14/PFT
Anchorage
CL

02-9513
MVCSR III
R16/PFT
Anchorage
CL

12-5393
MVCSR III
R14/PFT
Anchorage
CL

12-5377
MVCSR III
R14/PFT
Anchorage
CL

02-N17010
Training Spec I
R16/NP
Anchorage
CL

12-5366
MVCSR III
R14/PFT
Anchorage
CL

02-N17006
Admin Assist II
R14/NP
Anchorage
CL

12-5449
Training Spec I
R16/PFT
Anchorage
CL

12-5317
MVCSR III
R14/PFT
Anchorage
CL

