

State of Alaska FY2025 Governor's Operating Budget

Department of Commerce, Community, and Economic Development Corporations, Business and Professional Licensing RDU/Component Budget Summary

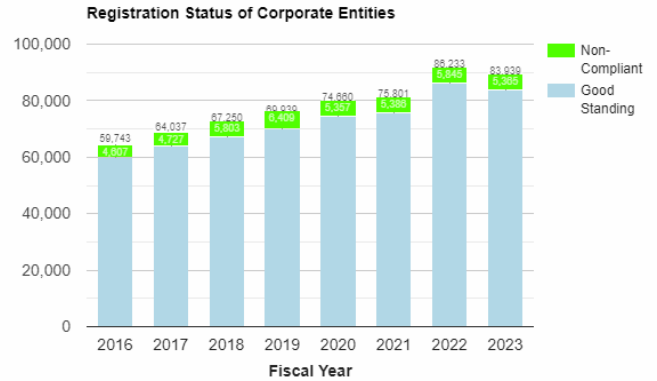
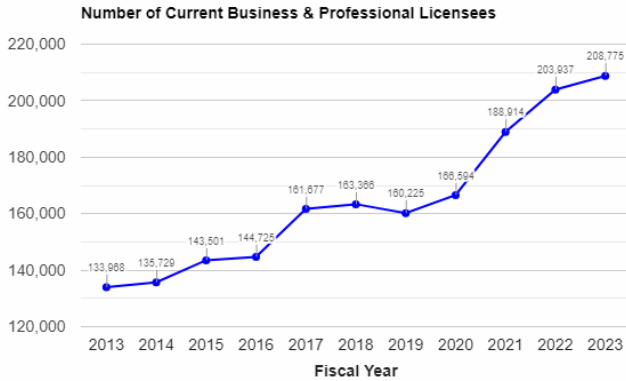
RDU/Component: Corporations, Business and Professional Licensing

Contribution to Department's Mission

Inspiring public confidence through balanced regulation of competent professional and business services.

Results

(Additional performance information is available on the web at <https://omb.alaska.gov/results>.)



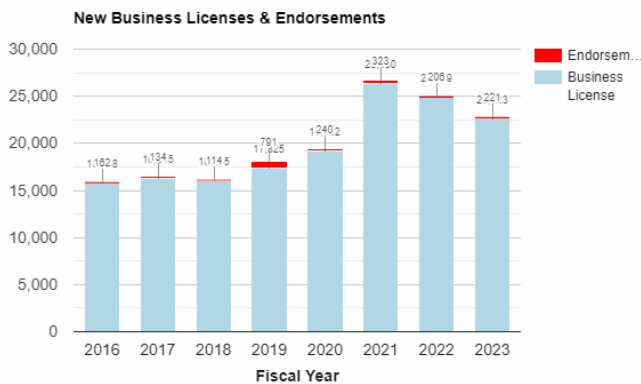
Core Services

- License businesses to engage in commerce in Alaska, and grant endorsements for sale of tobacco products, electronic smoking products, or products containing nicotine.
- Administer 45 professional licensing programs; 24 of these are managed solely by the division, and 21 are governed by boards and commissions with divisional administrative and investigative support.
- Register Corporations and Trademarks for entities engaged in commerce in Alaska.
- Provide the means to file a complaint or bring a matter pertaining to actions of a licensed or unlicensed professional or business to investigative staff.

Measures by Core Service

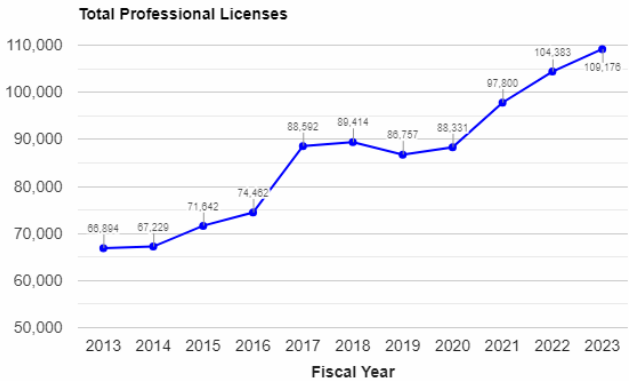
(Additional performance information is available on the web at <https://omb.alaska.gov/results>.)

1. License businesses to engage in commerce in Alaska, and grant endorsements for sale of tobacco products, electronic smoking products, or products containing nicotine.

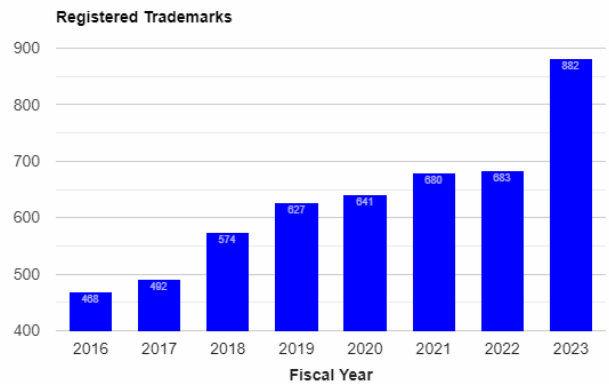
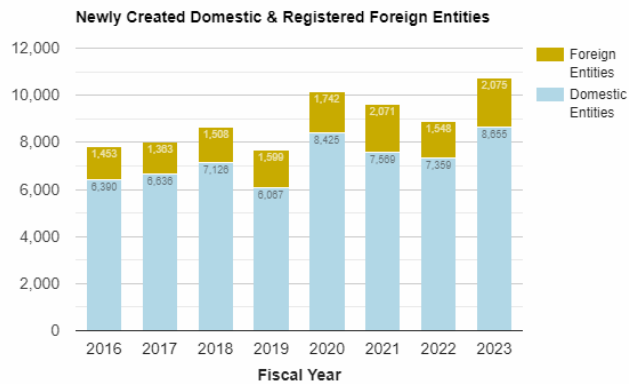


2. Administer 45 professional licensing programs; 24 of these are managed solely by the division, and 21 are governed by boards and commissions with divisional administrative and investigative

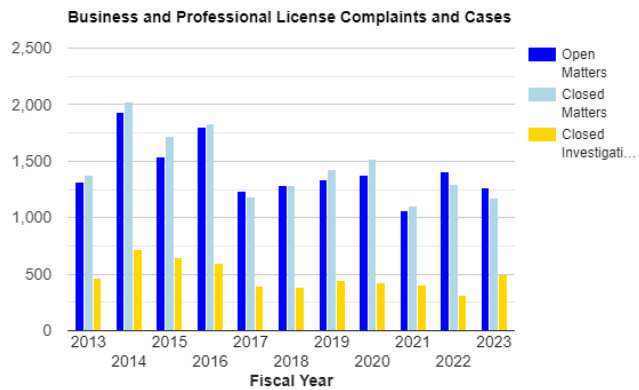
support.



3. Register Corporations and Trademarks for entities engaged in commerce in Alaska.



4. Provide the means to file a complaint or bring a matter pertaining to actions of a licensed or unlicensed professional or business to investigative staff.



Major Component Accomplishments in 2023

Professional licensing processing times are decreasing (more dramatically for some programs than for all). To offer a few examples: In general, nursing wait times are decreasing slowly from 10-12 weeks to 7-8 weeks from the date an item is received to the date it's processed, and initial nursing applications that were complete at first submission are being processed in less than six weeks. When a hospital or health care entity in the state submits a complete Request for Expedited Review form, nursing and medical applications are processed within 1-2 business days (or immediately if the date patients will be impacted has passed). Pharmacy has had periods when applications were being processed within days; dental is processing at 1-2 weeks; and construction contractor processing times have

decreased to 2-3 weeks.

The division has reset the focus on customer service. At the worst points during the COVID-19 pandemic, the division's professional licensing team had 35 percent vacancy which necessitated staff to operate in survival mode. As the focus has shifted, the response times are less than a week for calls and email. License@Alaska.Gov emails are being responded to no later than the next business day. The division continues to train staff on providing helpful, detailed information in response to questions, and on how to better utilize the MY LICENSE system (though MyAlaska) to communicate with applicants and licensees.

The division continues to add online, self-serve options for applicants and licensees. All renewal applications are available online. The division is continually increasing the number of programs that have their initial applications online; nearly 70 of the division's more than 300 applications for licenses, certificates, and endorsements are online. Additionally, the division is adding options to allow licensees and applicants to upload their own documents such as proof of insurance and required reports without staff having to initiate the process.

The division has significantly decreased vacancies and continues to work hard to get positions filled when they become vacant due to normal turnover. While it is too soon to report results, significant steps have been taken to restructure the division to create clearer paths for promotion within the division including creating Program Coordinator 1 and 2 positions to oversee Records and Licensing Supervisors and/or Occupational Licensing Examiners, and an in-process classification study to ideally allow for different levels of licensing examiner to recognize the programs worked on by some examiners are significantly more complex than others. There is a steep learning curve, so anything that can be done to retain knowledgeable employees within the division is extremely beneficial. Additionally, restructuring efforts have placed work, especially work with a regulatory board, at a more appropriate (higher) level. This makes the workload and responsibility of the lower-level positions more comparable to positions in other divisions and departments at the same range which reduces turnover.

The division had an active presence in the legislature, tracking and attending hearings for 34 bills that touch division statutes. Five of the 30 total bills passed by the legislature had a direct impact on the division. House Bill 112, Profession of Pharmacy, passed and the division has worked closely with the Board of Pharmacy to update regulations, forms, websites, and processes to conform with the new statutes.

Key Component Challenges

The division has statutory authority for, and statutory requirements to operate, the Prescription Drug Monitoring Program (PDMP). The program is funded through grants which makes for an unstable funding stream. Nearly sufficient funding is currently secured for FY2024. Funding for FY2025 is more uncertain at this point. Lack of funding could result in the loss of PDMP staff.

The division, like nearly all employers, struggles to fill positions. While the division is incredibly fortunate to have 17 new positions in FY2024 it is likely to take six months or more to find suitable candidates for those positions. The high portion of entry level positions assures high turnover which means cyclical periods of short staffing, added pressure on remaining staff, and customers are frequently dealing with trainees.

Significant Changes in Results to be Delivered in FY2025

The growth in number of licensees and expansion of licensing statutes to include new license types and pathways to licensure continues to impact division operations. While these factors lead to increased revenue as well as increased workload, the division has struggled to hire new staff to keep up with this growth.

Several pieces of legislation could have significant impact on licensure in Alaska, including the Governor's bill for temporary licensure and several bills that would trigger Alaska joining a licensing compact. The passage of any of these bills is anticipated to positively impact pace at which licensure can be obtained in Alaska.

Statutory and Regulatory Authority

AS 08.01 Centralized Licensing
AS 08.02 Miscellaneous Provisions

Component — Corporations, Business and Professional Licensing

AS 08.03	Termination, Continuation and Reestablishment of Regulatory Boards
AS 08.04	Board of Public Accountancy
AS 08.07	Regulation of Athletic Trainers
AS 08.13	Board of Barbers and Hairdressers
AS 08.15	Regulation of Behavior Analysts
AS 08.54	Big Game Commercial Services Board
AS 08.20	Board of Chiropractic Examiners
AS 08.29	Board of Professional Counselors
AS 08.36	Board of Dental Examiners
AS 08.48	State Board of Registration for Architects, Engineers, and Land Surveyors
AS 08.61	Board of Massage Therapists
AS 08.62	Board of Marine Pilots
AS 08.63	Board of Marital and Family Therapy
AS 08.64	State Medical Board
AS 08.65	Board of Certified Direct Entry Midwives
AS 08.68	Board of Nursing
AS 08.72	Board of Examiners in Optometry
AS 08.80	Board of Pharmacy
AS 08.84	State Physical Therapy and Occupational Therapy Board
AS 08.86	Board of Psychologists and Psychological Associate Examiners
AS 08.87	Board of Certified Real Estate Appraisers
AS 08.88	Real Estate Commission
AS 08.95	Board of Social Worker Examiners
AS 08.98	Board of Veterinary Examiners
AS 08.06	Regulation of Acupuncturists
AS 08.11	Regulation of Audiologists and Speech-Language Pathologists
AS 08.24	Regulation of Collection Agencies
AS 08.92	Regulation of Concert Promoters
AS 08.18	Regulation of Construction Contractors and Home Inspectors
As 08.38	Regulation of Dietitians and Nutritionists
AS 08.40	Regulation of Electrical and Mechanical Administrators
AS 08.42	Regulation of Morticians
AS 08.45	Regulation of the Practice of Naturopathy
AS 08.70	Regulation of Nursing Home Administrators
AS 08.71	Regulation of Dispensing Opticians
AS 08.02.011	Regulation of Professional Geologists
AS 08.02.050	Regulation of Euthanasia for Domestic Animals
AS 08.55	Regulation of Hearing Aid Dealers
AS 08.26	Regulation of Professional Guardians and Professional Conservators
AS 10	Corporations and Associations
AS 17.30.200	Controlled Substances Prescription Database
AS 25.27.244	Child Support Enforcement Program
AS 43.70	Regulation of Business Licenses
AS 44.33.381	Telemedicine Business Registry
AS 46.03.375	Certification of Storage Tank Workers
AS 44.62	Administrative Procedure Act
AS 44.33.020	Department of Community and Economic Development
03 AAC 16	Corporations, Partnerships, and Other Business Organizations
12 AAC 02 - 75	Professional and Vocational Regulations
12 AAC 12	Business Licensing Regulations
18 AAC 78	Underground Storage Tank Workers

Federal Laws:

42 CFR 431, 433, and 483	Nurse Aide Registry
42 CFR 442 and 445	Nursing Home Administrators
12 U.S.C. 3338	Real Estate Appraisers

Component — Corporations, Business and Professional Licensing

38 U.S.C. 1730	Prescription Drug Monitoring Program
42 U.S.C. 1396	Prescription Drug Monitoring Program
Various	Medical, nursing, and pharmacy practice

Contact Information

Contact: Sylvan Robb, Division Director
Phone: (907) 465-2144
E-mail: sylvan.robbs@alaska.gov

Corporations, Business and Professional Licensing Personal Services Information				
Authorized Positions			Personal Services Costs	
	FY2024 Management Plan	FY2025 Governor		
Full-time	121	121	Annual Salaries	8,110,925
Part-time	0	0	COLA	372,981
Nonpermanent	0	0	Premium Pay	0
			Annual Benefits	5,592,881
			<i>Less 4.78% Vacancy Factor</i>	<i>(673,187)</i>
			Lump Sum Premium Pay	0
Totals	121	121	Total Personal Services	13,403,600

Position Classification Summary					
Job Class Title	Anchorage	Fairbanks	Juneau	Others	Total
Accounting Technician 1	0	0	2	0	2
Accounting Technician 3	0	0	1	0	1
Administrative Assistant 1	2	0	7	0	9
Administrative Assistant 2	1	0	1	0	2
Administrative Assistant 3	0	0	1	0	1
Administrative Officer 1	0	0	1	0	1
Admn OPS Mgr 1	0	0	1	0	1
Big Game Board Executive Admin	0	0	1	0	1
Deputy Director	0	0	1	0	1
Division Director - Px	0	0	1	0	1
Ex Ad St Md Brd	0	0	1	0	1
Ex Admn Bon	1	0	0	0	1
Exec Admin AELS	0	0	1	0	1
Exec Administrator Rec	1	0	0	0	1
Exec Admn Bop	0	0	1	0	1
Exec Admn Bpa	1	0	0	0	1
Information System Coordinator	0	0	1	0	1
Investigator 2	2	0	0	0	2
Investigator 3	15	0	0	0	15
Investigator 4	3	0	0	0	3
Investigator 5	1	0	0	0	1
Marine Pilot Coordinator	0	0	1	0	1
Nurse Consultant 1	0	0	1	0	1
Occupational License Examiner	16	1	24	0	41
Office Assistant 2	4	0	6	0	10
Office Assistant 3	1	0	0	0	1
Paralegal 2	1	0	1	0	2
Program Coordinator 1	2	1	0	0	3
Program Coordinator 2	0	0	3	0	3
Project Assistant	1	0	0	0	1
Publications Specialist 2	0	0	2	0	2
Publications Specialist 3	0	0	1	0	1
Rcd & Lic Spvr	1	0	4	0	5
Regulations Specialist 2	0	0	2	0	2
Totals	53	2	66	0	121

Component Detail All Funds
Department of Commerce, Community, and Economic Development

Component: Corporations, Business and Professional Licensing (2360)
RDU: Corporations, Business and Professional Licensing (117)

Non-Formula Component

	FY2023 Actuals	FY2024 Enrolled	FY2024 Authorized	FY2024 Management Plan	FY2025 Governor Adjusted Base	FY2025 Governor	FY2024 Management Plan vs FY2025 Governor	
1000 Personal Services	10,105.6	12,354.4	12,850.6	12,850.6	13,403.6	13,403.6	553.0	4.3%
2000 Travel	231.8	352.6	382.6	382.6	382.6	382.6	0.0	0.0%
3000 Services	5,228.2	5,559.4	5,688.8	5,688.8	5,684.4	5,684.4	-4.4	-0.1%
4000 Commodities	164.3	253.9	303.9	303.9	263.9	283.9	-20.0	-6.6%
5000 Capital Outlay	0.0	7.4	7.4	7.4	7.4	7.4	0.0	0.0%
7000 Grants, Benefits	0.0	0.0	0.0	0.0	0.0	0.0	0.0	0.0%
8000 Miscellaneous	0.0	0.0	0.0	0.0	0.0	0.0	0.0	0.0%
Totals	15,729.9	18,527.7	19,233.3	19,233.3	19,741.9	19,761.9	528.6	2.7%
Fund Sources:								
1004 Gen Fund (UGF)	1,205.1	110.1	289.5	289.5	289.5	289.5	0.0	0.0%
1005 GF/Prgm (DGF)	1,684.5	1,799.8	1,799.8	1,799.8	1,697.6	1,707.6	-92.2	-5.1%
1007 I/A Rcpts (Other)	1,068.6	1,047.8	1,047.8	1,047.8	1,069.1	1,069.1	21.3	2.0%
1040 RE Rec Fnd (DGF)	0.0	304.3	304.3	304.3	309.9	309.9	5.6	1.8%
1108 Stat Desig (Other)	24.7	32.6	32.6	32.6	32.6	32.6	0.0	0.0%
1156 Rcpt Svcs (DGF)	11,747.0	15,233.1	15,759.3	15,759.3	16,343.2	16,353.2	593.9	3.8%
Unrestricted General (UGF)	1,205.1	110.1	289.5	289.5	289.5	289.5	0.0	0.0%
Designated General (DGF)	13,431.5	17,337.2	17,863.4	17,863.4	18,350.7	18,370.7	507.3	2.8%
Other Funds	1,093.3	1,080.4	1,080.4	1,080.4	1,101.7	1,101.7	21.3	2.0%
Federal Funds	0.0	0.0	0.0	0.0	0.0	0.0	0.0	0.0%
Positions:								
Permanent Full Time	103	116	121	121	121	121	0	0.0%
Permanent Part Time	0	0	0	0	0	0	0	0.0%
Non Permanent	0	0	0	0	0	0	0	0.0%

Change Record Detail - Multiple Scenarios with Descriptions
Department of Commerce, Community, and Economic Development

Component: Corporations, Business and Professional Licensing (2360)

RDU: Corporations, Business and Professional Licensing (117)

Scenario/Change Record Title	Trans Type	Totals	Personal Services	Travel	Services	Commodities	Capital Outlay	Grants, Benefits	Miscellaneous	Positions		NP
										PFT	PPT	
***** Changes From FY2024 Enrolled To FY2024 Authorized *****												
FY2024 Enrolled	Enrolled	18,527.7	12,354.4	352.6	5,559.4	253.9	7.4	0.0	0.0	116	0	0
1004 Gen Fund		110.1										
1005 GF/Prgm		1,799.8										
1007 I/A Rcpts		1,047.8										
1040 RE Rec Fnd		304.3										
1108 Stat Desig		32.6										
1156 Rcpt Svcs		15,233.1										
Profession of Pharmacy Ch15 SLA2023 (HB112) (Sec2 Ch1 FSSLA2023 P44 L10) (HB39)												
	FisNot	705.6	496.2	30.0	129.4	50.0	0.0	0.0	0.0	5	0	0
1004 Gen Fund		179.4										
1156 Rcpt Svcs		526.2										
Subtotal		19,233.3	12,850.6	382.6	5,688.8	303.9	7.4	0.0	0.0	121	0	0
***** Changes From FY2024 Management Plan To FY2025 Governor Adjusted Base *****												
Reverse One-Time Increment for a Big Game Board Executive Director												
	OTI	-160.0	-160.0	0.0	0.0	0.0	0.0	0.0	0.0	-1	0	0
1005 GF/Prgm		-160.0										
Currently the Department of Commerce, Community, and Economic Development shares a position with Marine Pilots within Corporations, Business and Professional Licensing component.												
This one-time item added one executive administrative position specifically for the Big Game Commission and provided funding for one year. This transaction reverses this one-time item for FY2024.												
Restore a Full-Time Big Game Commercial Services Board Executive Administrator (08-?094)												
	IncM	160.0	160.0	0.0	0.0	0.0	0.0	0.0	0.0	1	0	0
1156 Rcpt Svcs		160.0										
Funding for the executive support for the Big Game Commercial Services Board was included in the FY2024 budget as a temporary item. The position has been established and continuing support is needed.												
The original addition of funding was 1005 general fund program receipts, which are generated from business licensing and corporations filing receipts. This restoration changes the funding to 1156 receipt supported services so that the position is funded from professional licensing receipts from the program it supports.												
Full-time Exempt Big Game Board Executive Administrator, 08-?094, range 23, located in Juneau												
Reverse Second Year of Profession of Pharmacy Ch15 SLA2023 (HB112) (Sec2 Ch1 FSSLA2023 P44 L10) (HB39)												
	OTI	-44.4	0.0	0.0	-4.4	-40.0	0.0	0.0	0.0	0	0	0

Change Record Detail - Multiple Scenarios with Descriptions
Department of Commerce, Community, and Economic Development

Component: Corporations, Business and Professional Licensing (2360)

RDU: Corporations, Business and Professional Licensing (117)

Scenario/Change Record Title	Trans Type	Totals	Personal Services	Travel	Services	Commodities	Capital Outlay	Grants, Benefits	Miscellaneous	Positions		NP
										PFT	PPT	

1156 Rcpt Svcs		-44.4										
----------------	--	-------	--	--	--	--	--	--	--	--	--	--

HB 112 changes the membership of the Board of Pharmacy to include a pharmacy technician; creates license types for manufacturers and internet-based pharmacies and gives the board the authority to regulate and inspect those facilities; allows for fingerprint-based criminal background checks for pharmacists and pharmacy technicians; allows pharmacists to administer epinephrine; allows the board to create the standards for an epinephrine auto-injector training program and removes such authority from the Department of Health; creates a "retired" status for pharmacist licenses; provides for the salary of the board's executive administrator to be different if the incumbent is a licensed pharmacist; and updates other sections of Alaska's pharmacy laws (AS 08.80) to better align with national standards.

FY2025 Salary, Health Insurance, and PERS Rate Adjustments

	SalAdj	Totals	Personal Services	Travel	Services	Commodities	Capital Outlay	Grants, Benefits	Miscellaneous	PFT	PPT	NP
1005 GF/Prgm	57.8			0.0	0.0	0.0	0.0	0.0	0.0	0	0	0
1007 I/A Rcpts	21.3											
1040 RE Rec Fnd	5.6											
1156 Rcpt Svcs	468.3											

FY2025 Salary, Health Insurance, and PERS Rate Adjustments: \$553.0

FY2025 AlaskaCare insurance from \$1,793 to \$1,908 per member per month: \$37.5
 FY2025 GGU health insurance from \$1,573.50 to \$1,579.50 per member per month: \$6.5
 FY2025 GGU 5% Cost of Living Adjustment: \$373.5
 FY2025 PERS Rate Adjustment from 25.10% to 26.76%: \$135.5

Subtotal	19,741.9	13,403.6	382.6	5,684.4	263.9	7.4	0.0	0.0	121	0	0
-----------------	-----------------	-----------------	--------------	----------------	--------------	------------	------------	------------	------------	----------	----------

***** **Changes From FY2025 Governor Adjusted Base To FY2025 Governor** *****

Replace Aging Fold and Stuff Machine to Improve Efficiencies

	IncOTI	Totals	Personal Services	Travel	Services	Commodities	Capital Outlay	Grants, Benefits	Miscellaneous	PFT	PPT	NP
1005 GF/Prgm	10.0			0.0	0.0	20.0	0.0	0.0	0.0	0	0	0
1156 Rcpt Svcs	10.0											

The Division of Corporations, Business, and Professional Licenses is responsible for managing 45 regulatory professional licensing programs, as well as business and corporation filings. The division has taken steps to reduce the amount of paper and mail processed and has made large reductions in the number of mailouts each year. Since FY2018, mailed volumes have dropped notably, and postage costs have decreased nearly 40 percent even as postage prices have risen. However, the division continues to process legally required mailouts for some renewals and regulations, which required over \$60.0 in postage costs in FY2023. The division does not count individual documents processed but has reported that nearly 85 percent of licensees have opted into electronic communications.

Each mailout project involves thousands of documents, which must be assembled and mailed. The division's existing machine has aged and now has diminished function. Replacing the machine with a modern version will improve the efficiency of mailouts and reduce staff time and effort to process these required mailouts.

Totals	19,761.9	13,403.6	382.6	5,684.4	283.9	7.4	0.0	0.0	121	0	0
---------------	-----------------	-----------------	--------------	----------------	--------------	------------	------------	------------	------------	----------	----------

Line Item Detail (1676)
Department of Commerce, Community, and Economic Development
Travel

Component: Corporations, Business and Professional Licensing (2360)

Line Number	Line Name		FY2023 Actuals	FY2024 Management Plan	FY2025 Governor
2000	Travel		231.8	382.6	382.6
Object Class	Servicing Agency	Explanation	FY2023 Actuals	FY2024 Management Plan	FY2025 Governor
2000 Travel Detail Totals			231.8	382.6	382.6
2000	In-State Employee Travel	In-State Transportation - Transportation costs for travel relating to administration, meetings, boards and commissions.	74.5	230.0	230.0
2001	In-State Non-Employee Travel	In-State Transportation - Transportation costs for travel relating to meetings and boards for non-employees.	47.9	0.0	0.0
2002	Out of State Employee Travel	Out-of-State Transportation - Transportation costs for travel relating to administration, meetings, boards and commissions.	67.1	152.6	152.6
2003	Out of State Non-Employee Travel	Out-of-State Transportation - Transportation costs for travel relating to meetings, boards and commissions for non-employees.	42.3	0.0	0.0

Line Item Detail (1676)
Department of Commerce, Community, and Economic Development
Services

Component: Corporations, Business and Professional Licensing (2360)

Line Number	Line Name		FY2023 Actuals	FY2024 Management Plan	FY2025 Governor
3000	Services		5,228.2	5,688.8	5,684.4
Object Class	Servicing Agency	Explanation	FY2023 Actuals	FY2024 Management Plan	FY2025 Governor
3000 Services Detail Totals			5,228.2	5,688.8	5,684.4
3000	Education Services	Training, educational conferences, agency memberships, tuition, books and fees for work-related courses.	122.9	175.0	175.0
3001	Financial Services	Accounting, auditing, management consulting, grantee monitoring, loan servicing and insurance related services.	539.6	550.0	550.0
3002	Legal and Judicial Services	Legal and judicial services, including costs to conduct hearings and transcription fees.	22.6	46.0	46.0
3003	Information Technology	Information Technology - Training, consulting, equipment and software leases, licensing and maintenance.	391.7	400.0	400.0
3004	Telecommunications	Local, long distance, and cellular telephone charges, television, data/network, telecommunication equipment, and other wireless charges from outside vendors.	7.0	15.0	15.0
3006	Delivery Services	Freight, courier services, and postage.	23.0	25.0	25.0
3007	Advertising and Promotions	Advertising, promotions and legal notices.	25.3	25.0	25.0
3008	Utilities	Electricity, heating fuel, water, sewage and disposal services.	2.1	5.0	5.0
3009	Structure/Infrastructure/Land	Structure, infrastructure and land repairs, maintenance, rentals and leases.	24.4	25.0	25.0

Line Item Detail (1676)
Department of Commerce, Community, and Economic Development
Services

Component: Corporations, Business and Professional Licensing (2360)

Object Class	Servicing Agency	Explanation	FY2023 Actuals	FY2024 Management Plan	FY2025 Governor
3000 Services Detail Totals			5,228.2	5,688.8	5,684.4
3010	Equipment/Machinery	Machinery, furniture and equipment purchase, repairs, maintenance, rentals, and leases.	8.8	10.0	10.0
3011	Other Services	Other professional services.	238.3	240.0	240.0
3017	Inter-Agency Information Technology Non-Telecommunications	Admin - Department-wide Office of Information Technology - core services chargeback and pass-through billings for specialty licensing and other items.	335.3	340.0	340.0
3018	Inter-Agency Information Technology Telecommunications	Admin - Department-wide Office of Information Technology - Telecommunications.	32.2	35.0	35.0
3021	Inter-Agency Mail	Admin - Department-wide Shared Services of Alaska - Pro-rated share of expenses relating to central mailroom support and services.	70.3	75.0	75.0
3022	Inter-Agency Human Resources	Admin - Department-wide Division of Personnel and Labor Relations - Human resource and personnel services.	101.1	110.0	110.0
3023	Inter-Agency Building Leases	Admin - Department-wide State-owned facility space rent: Juneau State Office Building.	68.8	175.0	175.0
3023	Inter-Agency Building Leases	Admin - Department-wide State-owned facility space rent: Atwood Building.	101.1	150.0	150.0
3023	Inter-Agency Building Leases	Admin - Department-wide State-owned facility space rent: Linn Pacillo Parking Garage.	36.6	45.0	45.0
3024	Inter-Agency Legal	Law - Department-wide Legal services.	854.2	860.0	855.6
3024	Inter-Agency Legal	Law - Department-wide Regulations review.	32.4	35.0	35.0
3026	Inter-Agency Insurance	Admin - Department-wide Division of Risk Management - Risk management insurance charges for leased buildings, repossessed properties, public official bonds, and overhead.	2.3	3.0	3.0
3027	Inter-Agency Financial	Admin - Department-wide Division of Finance - Computer services for State accounting (IRIS),	96.1	100.0	100.0

Line Item Detail (1676)
Department of Commerce, Community, and Economic Development
Services

Component: Corporations, Business and Professional Licensing (2360)

Object Class	Servicing Agency	Explanation	FY2023 Actuals	FY2024 Management Plan	FY2025 Governor
3000 Services Detail Totals			5,228.2	5,688.8	5,684.4
		payroll (IRIS HRM), and reporting (ALDER) systems.			
3028	Inter-Agency Americans with Disabilities Act Compliance	Admin - Department-wide Americans with Disabilities Act (ADA) enforcement.	2.1	2.5	2.5
3029	Inter-Agency Education/Training	Admin - Department-wide Educational and training services, including procurement certification and Division of Finance courses.	0.0	4.0	4.0
3030	Inter-Agency Hearing/Mediation	Admin - Department-wide Hearing and mediation services.	178.9	190.0	190.0
3036	Inter-Agency Safety	PubSaf - Department-wide Fingerprinting services.	289.4	310.0	310.0
3037	State Equipment Fleet	Trans - Department-wide State equipment fleet services.	4.0	10.0	10.0
3038	Inter-Agency Management/Consulting	Commerce - Administrative Services (1028) Administrative Services support.	1,032.6	1,138.3	1,138.3
3038	Inter-Agency Management/Consulting	Commerce - Commissioner's Office (1027) Commissioner's Office support.	219.0	220.0	220.0
3038	Inter-Agency Management/Consulting	Labor - Department-wide Reimbursable services agreement with the Department of Labor and Workforce Development for Construction Contractors and Mechanical Administrators enforcement and inspections.	349.9	350.0	350.0
3038	Inter-Agency Management/Consulting	EnvCon - Department-wide Reimbursable services agreement with the Department of Environmental Conservation for Body Art and Piercing inspection and enforcement.	16.2	20.0	20.0

Line Item Detail (1676)
Department of Commerce, Community, and Economic Development
Commodities

Component: Corporations, Business and Professional Licensing (2360)

Line Number	Line Name		FY2023 Actuals	FY2024 Management Plan	FY2025 Governor
4000	Commodities		164.3	303.9	283.9
Object Class	Servicing Agency	Explanation	FY2023 Actuals	FY2024 Management Plan	FY2025 Governor
4000 Commodities Detail Totals			164.3	303.9	283.9
4000	Business	Supplies for office, library, training, and instructional needs, including small equipment, tools and subscriptions.	164.0	241.9	221.9
4000	Business	Annual computer refresh.	0.0	60.0	60.0
4002	Household/Institutional	Cleaning, food, and other household supplies.	0.2	1.0	1.0
4020	Equipment Fuel	Fuel and gasoline.	0.1	1.0	1.0

Line Item Detail (1676)

**Department of Commerce, Community, and Economic Development
Capital Outlay**

Component: Corporations, Business and Professional Licensing (2360)

Line Number	Line Name		FY2023 Actuals	FY2024 Management Plan	FY2025 Governor
5000	Capital Outlay		0.0	7.4	7.4
Object Class	Servicing Agency	Explanation	FY2023 Actuals	FY2024 Management Plan	FY2025 Governor
5000 Capital Outlay Detail Totals			0.0	7.4	7.4
5002	Structures and Infrastructure	Structure or infrastructure purchases, including office furniture.	0.0	7.4	7.4

Revenue Detail (1681)
Department of Commerce, Community, and Economic Development

Component: Corporations, Business and Professional Licensing (2360)

Revenue Type (OMB Fund Code) Revenue Source	Component	Comment	FY2023 Actuals	FY2024 Management Plan	FY2025 Governor
5005 GF/Prgm (1005 GF/Prgm)			8,413.0	1,799.8	9,299.8
5101 Program Receipts Public Protection - Licenses and Permits		Program Receipts for Business Licensing and Corporations - Licensing and permitting fees.	1,684.5	2,580.8	2,580.8
5101 Program Receipts Public Protection - Licenses and Permits		Program Receipts for Business Licensing and Corporations - Licensing and permitting fees. Collections in excess of expenditures lapse to the General Fund.	6,719.0	6,719.0	6,719.0
5101 Program Receipts Public Protection - Licenses and Permits		Program Receipts for Business Licensing and Corporations - Transfer to Capital Appropriations.	0.0	-7,500.0	0.0
5102 Program Receipts Public Protection - Fines and Forfeitures		Program Receipts - Fines/forfeitures.	9.5	0.0	0.0
5007 I/A Rcpts (1007 I/A Rcpts)			1,068.6	1,047.8	1,069.1
5301 Inter-Agency Receipts	Rev - Department-wide	Reimbursable services agreement with the Department of Revenue for Child Support Assistance.	1.4	5.0	5.0
5301 Inter-Agency Receipts	Health - Department-wide	Reimbursable services agreement with the Department of Health Health Care Services for Nurse Aide Training.	143.8	145.0	145.0
5301 Inter-Agency Receipts	Health - Department-wide	Reimbursable services agreements with the Department of Health for the Prescription Drug Monitoring Program.	923.4	475.0	475.0
5301 Inter-Agency Receipts		Inter-agency receipts.	0.0	422.8	444.1
5108 Stat Desig (1108 Stat Desig)			24.7	32.6	32.6
5200 Statutory Dsgntd Prgrm Rcpts Pblc Prtctn - 3rd Party Clctns		Third-party receipts for travel reimbursements.	24.7	32.6	32.6
5156 Rcpt Svcs (1156 Rcpt Svcs)			11,858.7	30,893.1	16,397.6

Revenue Detail (1681)

Department of Commerce, Community, and Economic Development

Component: Corporations, Business and Professional Licensing (2360)

Revenue Type (OMB Fund Code)	Component	Comment	FY2023 Actuals	FY2024 Management Plan	FY2025 Governor
5161 Receipt Supported Svcs Pblic Protection - Licenses & Permits		Receipt Supported Services for Professional Licensing revenue carryforward from FY2022 to FY2023.	11,775.4	0.0	0.0
5161 Receipt Supported Svcs Pblic Protection - Licenses & Permits		Receipt Supported Services for Professional Licensing.	15,105.3	15,759.3	16,397.6
5161 Receipt Supported Svcs Pblic Protection - Licenses & Permits		Receipt Supported Services for Professional Licensing revenue carryforward from FY2023 to FY2024.	-15,133.8	15,133.8	0.0
5163 Receipt Support Services - Fines and Forfeitures		Receipt Supported Services - Fines/forfeitures	111.8	0.0	0.0
6004 Gen Fund (1004 Gen Fund)			1,205.1	289.5	289.5
6047 General Fund - Miscellaneous		General funds to offset impacts of SB55 PERS Actuarial rate changes.	105.1	110.1	110.1
6047 General Fund - Miscellaneous		General funds in support of investigations for HB112, Profession of Pharmacy.	0.0	179.4	179.4
6047 General Fund - Miscellaneous		General funds to offset planned license fee increases.	1,100.0	0.0	0.0
6040 Surety Fnd (1040 RE Rec Fnd)			46.7	304.3	309.9
6480 Real Estate Surety Fund Pblic Protection - Licenses & Permits		Actuals are collections in the Real Estate Surety Fund.	46.7	304.3	309.9

Inter-Agency Services (1682)

Department of Commerce, Community, and Economic Development

Component: Corporations, Business and Professional Licensing (2360)

	FY2023 Actuals	FY2024 Management Plan	FY2025 Governor
Component Totals	3,822.5	4,172.8	4,168.4
With Department of Administration	1,024.8	1,229.5	1,229.5
With Department of Law	886.6	895.0	890.6
With Department of Public Safety	289.4	310.0	310.0
With Department of Transportation and Public Facilities	4.0	10.0	10.0
With Department of Commerce, Community, and Economic Development	1,251.6	1,358.3	1,358.3
With Department of Labor and Workforce Development	349.9	350.0	350.0
With Department of Environmental Conservation	16.2	20.0	20.0

Object Class	Servicing Agency	Explanation	FY2023 Actuals	FY2024 Management Plan	FY2025 Governor
3017 Inter-Agency Information Technology Non-Telecommunications	Admin - Department-wide	Office of Information Technology - core services chargeback and pass-through billings for specialty licensing and other items.	335.3	340.0	340.0
3018 Inter-Agency Information Technology Telecommunications	Admin - Department-wide	Office of Information Technology - Telecommunications.	32.2	35.0	35.0
3021 Inter-Agency Mail	Admin - Department-wide	Shared Services of Alaska - Pro-rated share of expenses relating to central mailroom support and services.	70.3	75.0	75.0
3022 Inter-Agency Human Resources	Admin - Department-wide	Division of Personnel and Labor Relations - Human resource and personnel services.	101.1	110.0	110.0
3023 Inter-Agency Building Leases	Admin - Department-wide	State-owned facility space rent: Juneau State Office Building.	68.8	175.0	175.0
3023 Inter-Agency Building Leases	Admin - Department-wide	State-owned facility space rent: Atwood Building.	101.1	150.0	150.0
3023 Inter-Agency Building Leases	Admin - Department-wide	State-owned facility space rent: Lenny Pacillo Parking Garage.	36.6	45.0	45.0

Inter-Agency Services (1682)

Department of Commerce, Community, and Economic Development

Component: Corporations, Business and Professional Licensing (2360)

Object Class	Servicing Agency	Explanation	FY2023 Actuals	FY2024 Management Plan	FY2025 Governor
3024	Inter-Agency Legal	Law - Department-wide	854.2	860.0	855.6
3024	Inter-Agency Legal	Law - Department-wide	32.4	35.0	35.0
3026	Inter-Agency Insurance	Admin - Department-wide	2.3	3.0	3.0
3027	Inter-Agency Financial	Admin - Department-wide	96.1	100.0	100.0
3028	Inter-Agency Americans with Disabilities Act Compliance	Admin - Department-wide	2.1	2.5	2.5
3029	Inter-Agency Education/Training	Admin - Department-wide	0.0	4.0	4.0
3030	Inter-Agency Hearing/Mediation	Admin - Department-wide	178.9	190.0	190.0
3036	Inter-Agency Safety	PubSaf - Department-wide	289.4	310.0	310.0
3037	State Equipment Fleet	Trans - Department-wide	4.0	10.0	10.0
3038	Inter-Agency Management/Consulting	Commerce - Administrative Services (1028)	1,032.6	1,138.3	1,138.3
3038	Inter-Agency Management/Consulting	Commerce - Commissioner's Office (1027)	219.0	220.0	220.0
3038	Inter-Agency Management/Consulting	Labor - Department-wide	349.9	350.0	350.0
3038	Inter-Agency Management/Consulting	EnvCon - Department-wide	16.2	20.0	20.0

Personal Services Expenditure Detail
Department of Commerce, Community, and Economic Development

Scenario: FY2025 Governor (20959)
Component: Corporations, Business and Professional Licensing (2360)
RDU: Corporations, Business and Professional Licensing (117)

PCN	Job Class Title	Time Status	Retire Code	Barg Unit	Location	Salary Sched	Range / Step	Comp Months	Split / Count	Annual Salaries	COLA	Premium Pay	Annual Benefits	Total Costs	UGF Amount
08-?086	Rcd & Lic Spvr	FT	A	GP	Juneau	205	16C	12.0		62,069	4,315	0	43,309	109,693	0
08-?094	Big Game Board Executive Admin	FT	A	XE	Juneau	99	23A	12.0		94,283	0	0	59,726	154,009	0
08-1282	Investigator 3	FT	A	GP	Anchorage	200	18E	12.0		72,794	5,061	0	47,497	125,352	0
08-1283	Investigator 3	FT	A	GP	Anchorage	200	18E / F	12.0		74,632	5,189	0	48,214	128,035	0
08-1284	Occupational License Examiner	FT	A	GP	Anchorage	200	14C / D	12.0		51,849	3,605	0	39,318	94,772	0
08-2001	Division Director - Px	FT	A	XE	Juneau	N05	27M / N	12.0		156,543	0	0	84,039	240,582	0
08-2002	Ex Admn Bon	FT	A	XE	Anchorage	N00	25E / F	12.0		116,548	0	0	68,421	184,969	0
08-2003	Deputy Director	FT	A	XE	Juneau	N05	25C / D	12.0		114,970	0	0	67,804	182,774	0
08-2004	Occupational License Examiner	FT	A	GP	Anchorage	200	14B / C	12.0		50,209	3,491	0	38,677	92,377	0
08-2005	Occupational License Examiner	FT	A	GP	Juneau	205	14B / C	12.0		52,256	3,633	0	39,477	95,366	0
08-2006	Occupational License Examiner	FT	A	GP	Juneau	205	14N / O	12.0		75,815	5,271	0	48,676	129,762	0
08-2007	Rcd & Lic Spvr	FT	A	SS	Juneau	205	16J	12.0		75,296	0	0	52,456	127,752	0
08-2008	Program Coordinator 1	FT	A	SS	Fairbanks	203	18F / J	12.0		83,056	0	0	55,486	138,542	0
08-2009	Occupational License Examiner	FT	A	GP	Juneau	205	14B / C	12.0		53,291	3,705	0	39,881	96,877	0
08-2010	Administrative Assistant 3	FT	A	GP	Juneau	205	15C / D	12.0		59,867	4,162	0	42,449	106,478	0
08-2011	Investigator 5	FT	A	SS	Anchorage	200	21F / J	12.0		97,341	0	0	61,064	158,405	0
08-2012	Investigator 3	FT	A	GP	Anchorage	200	18D / E	12.0		72,020	5,007	0	47,194	124,221	0
08-2014	Occupational License Examiner	FT	A	GP	Anchorage	200	14B / C	12.0		50,293	3,497	0	38,710	92,500	0
08-2015	Rcd & Lic Spvr	FT	A	SS	Juneau	205	16A / B	12.0		62,826	0	0	47,586	110,412	0
08-2018	Regulations Specialist 2	FT	A	GP	Juneau	205	16D / E	12.0		64,884	4,511	0	44,408	113,803	0
08-2021	Admn OPS Mgr 1	FT	A	SS	Juneau	205	22J	12.0		112,403	0	0	66,946	179,349	0
08-2022	Investigator 3	FT	A	GG	Anchorage	99	18P	12.0		99,179	6,895	0	57,800	163,874	0
08-2025	Office Assistant 2	FT	A	GP	Anchorage	200	10B / C	12.0		39,468	2,744	0	34,483	76,695	0
08-2026	Investigator 4	FT	A	SS	Anchorage	200	20J / K	12.0		94,378	0	0	59,907	154,285	0
08-2028	Occupational License Examiner	FT	A	GP	Juneau	205	14B	12.0		52,182	3,628	0	39,448	95,258	0
08-2030	Office Assistant 2	FT	A	GP	Juneau	205	10B / C	12.0		41,243	2,867	0	35,176	79,286	0
08-2035	Publications Specialist 2	FT	A	GP	Juneau	205	16D / E	12.0		64,567	4,489	0	44,284	113,340	0
08-2038	Occupational License Examiner	FT	A	GP	Juneau	205	14N	12.0		73,515	5,111	0	47,778	126,404	0
08-2039	Information System	FT	A	SS	Juneau	205	18F	12.0		83,470	0	0	55,648	139,118	0

Note: If a position is split, an asterisk (*) will appear in the Split/Count column. If the split position is also counted in the component, two asterisks (**) will appear in this column. [No valid job title] appearing in the Job Class Title indicates that the PCN has an invalid class code or invalid range for the class code effective date of this scenario.

Personal Services Expenditure Detail
Department of Commerce, Community, and Economic Development

Scenario: FY2025 Governor (20959)
Component: Corporations, Business and Professional Licensing (2360)
RDU: Corporations, Business and Professional Licensing (117)

PCN	Job Class Title	Time Status	Retire Code	Barg Unit	Location	Salary Sched	Range / Step	Comp Months	Split / Count	Annual Salaries	COLA	Premium Pay	Annual Benefits	Total Costs	UGF Amount
08-2040	Coordinator Occupational License Examiner	FT	A	GP	Juneau	205	14C / D	12.0		54,041	3,757	0	40,174	97,972	0
08-2042	Ex Ad St Md Brd	FT	A	XE	Juneau	N05	23D / E	12.0		103,817	0	0	63,449	167,266	0
08-2043	Administrative Assistant 2	FT	A	SS	Anchorage	600	14B / C	12.0		52,562	0	0	43,578	96,140	0
08-2045	Office Assistant 2	FT	A	GP	Anchorage	200	10L	12.0		50,018	3,478	0	38,603	92,099	0
08-2049	Occupational License Examiner	FT	A	GP	Anchorage	200	14M	12.0		67,802	4,714	0	45,547	118,063	0
08-2050	Exec Administrator Rec	FT	A	XE	Anchorage	N00	23M	12.0		118,931	0	0	69,351	188,282	0
08-2051	Office Assistant 2	FT	A	GP	Anchorage	200	10B / C	12.0		39,392	2,739	0	34,453	76,584	0
08-2052	Accounting Technician 3	FT	A	SS	Juneau	605	16K	12.0		76,939	0	0	53,097	130,036	0
08-2053	Program Coordinator 2	FT	A	SS	Juneau	205	20B / C	12.0		84,294	0	0	55,969	140,263	0
08-2054	Occupational License Examiner	FT	A	GP	Juneau	99	14P	12.0		78,743	5,475	0	49,820	134,038	0
08-2055	Accounting Technician 1	FT	A	GP	Juneau	205	12A / B	12.0		45,094	3,135	0	36,680	84,909	0
08-2056	Paralegal 2	FT	A	GP	Anchorage	200	16E / F	12.0		64,674	4,496	0	44,326	113,496	0
08-2058	Investigator 2	FT	A	GP	Anchorage	200	16E / F	12.0		65,852	4,578	0	44,786	115,216	0
08-2063	Investigator 3	FT	A	GP	Anchorage	200	18C / D	12.0		69,804	4,853	0	46,329	120,986	0
08-2066	Office Assistant 2	FT	A	GP	Juneau	205	10C / D	12.0		42,247	2,937	0	35,568	80,752	0
08-2068	Publications Specialist 3	FT	A	GP	Juneau	205	19C	12.0		76,440	5,314	0	48,920	130,674	0
08-2069	Occupational License Examiner	FT	A	GP	Anchorage	200	14B / C	12.0		49,915	3,470	0	38,562	91,947	0
08-2070	Occupational License Examiner	FT	A	GP	Juneau	205	14C / D	12.0		53,990	3,754	0	40,154	97,898	0
08-2071	Program Coordinator 1	FT	A	SS	Anchorage	200	18B / C	12.0		69,839	0	0	50,325	120,164	0
08-2073	Investigator 3	FT	A	GP	Anchorage	200	18O	12.0		95,160	6,616	0	56,231	158,007	0
08-2076	Occupational License Examiner	FT	A	GP	Anchorage	200	14C	12.0		51,383	3,572	0	39,136	94,091	0
08-2079	Marine Pilot Coordinator	FT	A	XE	Juneau	N05	20B / C	12.0		80,759	0	0	54,445	135,204	0
08-2080	Occupational License Examiner	FT	A	GP	Juneau	205	14C / D	12.0		55,123	3,832	0	40,596	99,551	0
08-2081	Administrative Officer 1	FT	A	SS	Juneau	205	17J / K	12.0		83,138	0	0	55,518	138,656	0
08-2082	Investigator 3	FT	A	GP	Anchorage	200	18C / D	12.0		70,237	4,883	0	46,498	121,618	0
08-2083	Office Assistant 2	FT	A	GP	Juneau	205	10E / F	12.0		45,613	3,171	0	36,883	85,667	0
08-2084	Occupational License Examiner	FT	A	GP	Juneau	205	14D / E	12.0		56,532	3,930	0	41,146	101,608	0
08-2085	Investigator 4	FT	A	SS	Anchorage	200	20E / F	12.0		90,520	0	0	58,401	148,921	0
08-2086	Paralegal 2	FT	A	SS	Juneau	205	16J / K	12.0		77,035	0	0	53,135	130,170	0

Note: If a position is split, an asterisk (*) will appear in the Split/Count column. If the split position is also counted in the component, two asterisks (**) will appear in this column.
 [No valid job title] appearing in the Job Class Title indicates that the PCN has an invalid class code or invalid range for the class code effective date of this scenario.

Personal Services Expenditure Detail
Department of Commerce, Community, and Economic Development

Scenario: FY2025 Governor (20959)
Component: Corporations, Business and Professional Licensing (2360)
RDU: Corporations, Business and Professional Licensing (117)

PCN	Job Class Title	Time Status	Retire Code	Barg Unit	Location	Salary Sched	Range / Step	Comp Months	Split / Count	Annual Salaries	COLA	Premium Pay	Annual Benefits	Total Costs	UGF Amount
08-2087	Occupational License Examiner	FT	A	GP	Anchorage	200	14B / C	12.0		50,824	3,534	0	38,917	93,275	0
08-2088	Investigator 4	FT	A	SS	Anchorage	200	20J	12.0		93,746	0	0	59,660	153,406	0
08-2089	Exec Admin AELS	FT	A	XE	Juneau	N05	23E / F	12.0		109,286	0	0	65,585	174,871	0
08-2090	Administrative Assistant 1	FT	A	GP	Anchorage	200	12B / C	12.0		44,444	3,090	0	36,426	83,960	0
08-2091	Investigator 3	FT	A	GP	Anchorage	200	18G / J	12.0		78,990	5,492	0	49,916	134,398	0
08-2092	Investigator 2	FT	A	GP	Anchorage	200	16C	12.0		59,105	4,109	0	42,151	105,365	0
08-2093	Occupational License Examiner	FT	A	GP	Anchorage	200	14D / E	12.0		53,392	3,712	0	39,920	97,024	0
08-2095	Investigator 3	FT	A	GP	Anchorage	200	18L	12.0		86,444	6,010	0	52,827	145,281	0
08-2096	Occupational License Examiner	FT	A	GP	Fairbanks	203	14B / C	12.0		52,142	3,625	0	39,432	95,199	0
08-2097	Occupational License Examiner	FT	A	GP	Anchorage	200	14B / C	12.0		51,271	3,565	0	39,092	93,928	0
08-2098	Occupational License Examiner	FT	A	GP	Anchorage	200	14B / C	12.0		50,181	3,489	0	38,666	92,336	0
08-2099	Accounting Technician 1	FT	A	GP	Juneau	205	12A / B	12.0		45,094	3,135	0	36,680	84,909	0
08-2101	Rcd & Lic Spvr	FT	A	SS	Anchorage	200	16N	12.0		81,494	0	0	54,876	136,370	0
08-2102	Investigator 3	FT	A	GP	Anchorage	200	18L	12.0		86,444	6,010	0	52,827	145,281	0
08-2103	Office Assistant 3	FT	A	GP	Anchorage	200	11G / J	12.0		48,653	3,383	0	38,070	90,106	0
08-2104	Investigator 3	FT	A	GP	Anchorage	200	18J	12.0		81,081	5,637	0	50,733	137,451	0
08-2105	Project Assistant	FT	A	GP	Anchorage	200	16D / E	12.0		62,817	4,367	0	43,601	110,785	0
08-2106	Occupational License Examiner	FT	A	GP	Anchorage	200	14G / J	12.0		60,665	4,218	0	42,760	107,643	0
08-2107	Occupational License Examiner	FT	A	GP	Juneau	205	14B / C	12.0		53,868	3,745	0	40,106	97,719	0
08-2109	Office Assistant 2	FT	A	GP	Anchorage	200	10B / C	12.0		39,784	2,766	0	34,606	77,156	0
08-2111	Exec Admn Bpa	FT	A	XE	Anchorage	N00	23L / M	12.0		116,435	0	0	68,376	184,811	0
08-2113	Occupational License Examiner	FT	A	GP	Anchorage	200	14B / C	12.0		49,720	3,457	0	38,486	91,663	0
08-2114	Office Assistant 2	FT	A	GG	Juneau	205	10Q / R	12.0		61,971	4,309	0	43,270	109,550	0
08-2115	Nurse Consultant 1	FT	A	GP	Juneau	205	24C / D	12.0		107,650	7,484	0	61,108	176,242	0
08-2116	Occupational License Examiner	FT	A	GP	Juneau	205	14B	12.0		52,182	3,628	0	39,448	95,258	0
08-2117	Program Coordinator 2	FT	A	GP	Juneau	205	20E / F	12.0		88,806	6,174	0	53,749	148,729	0
08-2118	Occupational License Examiner	FT	A	GP	Juneau	205	14F / G	12.0		61,312	4,263	0	43,013	108,588	0
08-2119	Occupational License	FT	A	GP	Juneau	205	14G / J	12.0		63,658	4,426	0	43,929	112,013	0

Note: If a position is split, an asterisk (*) will appear in the Split/Count column. If the split position is also counted in the component, two asterisks (**) will appear in this column. [No valid job title] appearing in the Job Class Title indicates that the PCN has an invalid class code or invalid range for the class code effective date of this scenario.

Personal Services Expenditure Detail
Department of Commerce, Community, and Economic Development

Scenario: FY2025 Governor (20959)
Component: Corporations, Business and Professional Licensing (2360)
RDU: Corporations, Business and Professional Licensing (117)

PCN	Job Class Title	Time Status	Retire Code	Barg Unit	Location	Salary Sched	Range / Step	Comp Months	Split / Count	Annual Salaries	COLA	Premium Pay	Annual Benefits	Total Costs	UGF Amount
08-2120	Examiner														
08-2120	Investigator 3	FT	A	GP	Anchorage	200	18C / D	12.0		69,097	4,804	0	46,053	119,954	0
08-2121	Investigator 3	FT	A	GP	Anchorage	200	18F / G	12.0		77,467	5,386	0	49,322	132,175	0
08-2123	Program Coordinator 2	FT	A	SS	Juneau	205	20K / L	12.0		103,135	0	0	63,327	166,462	0
08-2124	Occupational License Examiner	FT	A	GP	Juneau	205	14C / D	12.0		54,751	3,807	0	40,451	99,009	0
08-2125	Exec Admn Bop	FT	A	XE	Juneau	N05	23B / C	12.0		97,599	0	0	61,021	158,620	0
08-2126	Occupational License Examiner	FT	A	GP	Juneau	205	14E / F	12.0		58,966	4,100	0	42,097	105,163	0
08-2127	Investigator 3	FT	A	GP	Anchorage	200	18B	12.0		65,852	4,578	0	44,786	115,216	0
08-2128	Program Coordinator 1	FT	A	SS	Anchorage	200	18L	12.0		87,485	0	0	57,215	144,700	0
08-2129	Publications Specialist 2	FT	A	GP	Juneau	205	16A / B	12.0		59,579	4,142	0	42,336	106,057	0
08-2130	Occupational License Examiner	FT	A	GP	Anchorage	200	14C / D	12.0		52,509	3,651	0	39,575	95,735	0
08-2131	Occupational License Examiner	FT	A	GP	Anchorage	200	14C / D	12.0		52,557	3,654	0	39,594	95,805	0
08-2132	Occupational License Examiner	FT	A	GP	Juneau	205	14B / C	12.0		52,330	3,638	0	39,506	95,474	0
08-2133	Occupational License Examiner	FT	A	GP	Anchorage	200	14C / D	12.0		53,313	3,707	0	39,889	96,909	0
08-2134	Occupational License Examiner	FT	A	GP	Anchorage	200	14C / D	12.0		53,313	3,707	0	39,889	96,909	0
08-2135	Occupational License Examiner	FT	A	GP	Juneau	205	14C / D	12.0		55,985	3,892	0	40,933	100,810	0
08-2136	Occupational License Examiner	FT	A	GP	Juneau	205	14C / D	12.0		55,985	3,892	0	40,933	100,810	0
08-2137	Rcd & Lic Spvr	FT	A	SS	Juneau	205	16F	12.0		72,925	0	0	51,530	124,455	0
08-2138	Administrative Assistant 1	FT	A	GP	Juneau	205	12B / C	12.0		47,307	3,289	0	37,544	88,140	0
08-2139	Administrative Assistant 1	FT	A	GP	Juneau	205	12B / C	12.0		47,307	3,289	0	37,544	88,140	0
08-2140	Administrative Assistant 1	FT	A	GP	Juneau	205	12B	12.0		45,786	3,183	0	36,950	85,919	0
08-2141	Administrative Assistant 1	FT	A	GP	Juneau	205	12B	12.0		45,786	3,183	0	36,950	85,919	0
08-2142	Administrative Assistant 1	FT	A	GP	Anchorage	200	12B	12.0		43,602	3,031	0	36,097	82,730	0
08-2143	Administrative Assistant 1	FT	A	GP	Juneau	205	12B	12.0		45,786	3,183	0	36,950	85,919	0
08-2144	Administrative Assistant 1	FT	A	GP	Juneau	205	12B	12.0		45,786	3,183	0	36,950	85,919	0
08-2145	Investigator 3	FT	A	GP	Anchorage	200	18C	12.0		68,114	4,736	0	45,669	118,519	0
08-2147	Occupational License Examiner	FT	A	GP	Juneau	205	14C	12.0		53,957	3,751	0	40,141	97,849	0
08-2148	Occupational License Examiner	FT	A	GP	Juneau	205	14C	12.0		53,957	3,751	0	40,141	97,849	0

Note: If a position is split, an asterisk (*) will appear in the Split/Count column. If the split position is also counted in the component, two asterisks (**) will appear in this column. [No valid job title] appearing in the Job Class Title indicates that the PCN has an invalid class code or invalid range for the class code effective date of this scenario.

Personal Services Expenditure Detail
Department of Commerce, Community, and Economic Development

Scenario: FY2025 Governor (20959)
Component: Corporations, Business and Professional Licensing (2360)
RDU: Corporations, Business and Professional Licensing (117)

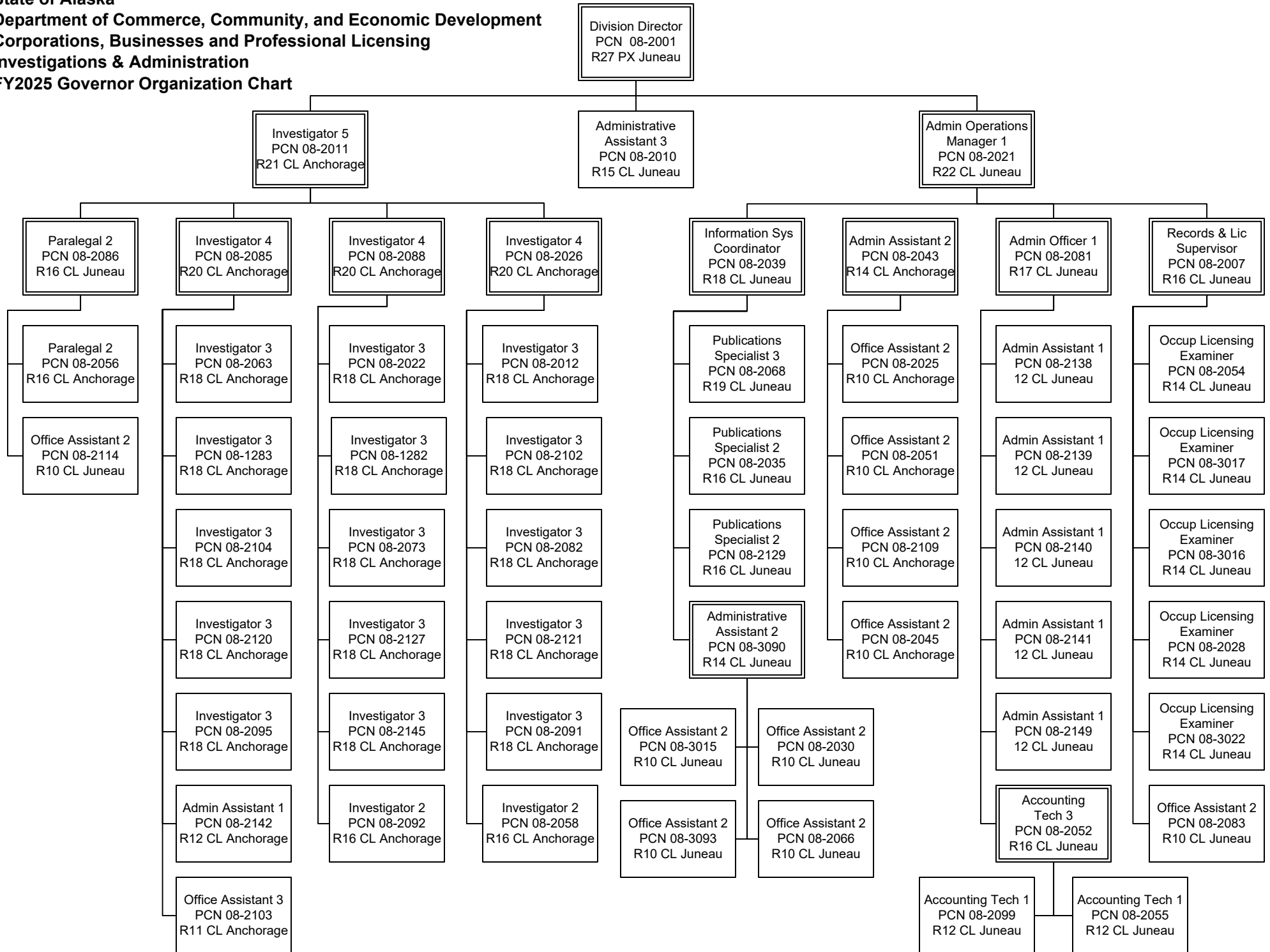
PCN	Job Class Title	Time Status	Retire Code	Barg Unit	Location	Salary Sched	Range / Step	Comp Months	Split / Count	Annual Salaries	COLA	Premium Pay	Annual Benefits	Total Costs	UGF Amount
08-2149	Examiner Administrative Assistant 1	FT	A	GP	Juneau	205	12B	12.0		45,786	3,183	0	36,950	85,919	0
08-3009	Regulations Specialist 2	FT	A	GP	Juneau	205	16D / E	12.0		66,451	4,620	0	45,020	116,091	0
08-3015	Office Assistant 2	FT	A	GP	Juneau	205	10C / D	12.0		42,449	2,951	0	35,647	81,047	0
08-3016	Occupational License Examiner	FT	A	GP	Juneau	205	14B	12.0		52,182	3,628	0	39,448	95,258	0
08-3017	Occupational License Examiner	FT	A	GP	Juneau	205	14M	12.0		71,195	4,950	0	46,872	123,017	0
08-3022	Occupational License Examiner	FT	A	GP	Juneau	205	14C	12.0		53,957	3,751	0	40,141	97,849	0
08-3090	Administrative Assistant 2	FT	A	SS	Juneau	205	14B	12.0		55,099	0	0	44,569	99,668	0
08-3093	Office Assistant 2	FT	A	GP	Juneau	205	10B / C	12.0		40,970	2,848	0	35,069	78,887	0

	Total Positions	New	Deleted	Total Salary Costs:	Total COLA:	Total Premium Pay:	Total Benefits:
Full Time Positions:	121	0	0	8,110,925	372,981	0	5,592,881
Part Time Positions:	0	0	0				
Non Permanent Positions:	0	0	0				
Positions in Component:	121	0	0				
				Total Pre-Vacancy:	14,076,787		
				Minus Vacancy Adjustment of 4.78%:	(673,187)		
				Total Post-Vacancy:	13,403,600		
				Plus Lump Sum Premium Pay:	0		
				Personal Services Line 100:	13,403,600		

PCN Funding Sources:	Pre-Vacancy	Post-Vacancy	Percent
1005 General Fund/Program Receipts	1,426,363	1,358,150	10.13%
1007 Interagency Receipts	446,774	425,408	3.17%
1040 Real Estate Recovery Fund	129,613	123,415	0.92%
1156 Receipt Supported Services	12,074,037	11,496,627	85.77%
Total PCN Funding:	14,076,787	13,403,600	100.00%

Note: If a position is split, an asterisk (*) will appear in the Split/Count column. If the split position is also counted in the component, two asterisks (**) will appear in this column. [No valid job title] appearing in the Job Class Title indicates that the PCN has an invalid class code or invalid range for the class code effective date of this scenario.

State of Alaska
Department of Commerce, Community, and Economic Development
Corporations, Businesses and Professional Licensing
Investigations & Administration
FY2025 Governor Organization Chart



State of Alaska
Department of Commerce, Community and Economic Development
Corporations, Businesses and Professional Licensing
Professional & Business Licensing
FY2025 Governor Organization Chart

