

# **State of Alaska FY2025 Governor's Operating Budget**

## **Department of Corrections Statewide Probation and Parole Component Budget Summary**

**Component: Statewide Probation and Parole****Contribution to Department's Mission**

Supervise offenders residing in communities in Alaska.

**Core Services**

- Offender Supervision
- Offender Habilitation

**Major Component Accomplishments in 2023**

Initiated partnership with Transitional Goal Achievers LLC and the Alaska Police Standards Council to deliver Leadership Development Phase 1 (first line supervisor), 2 (mid-level manager), and 3 (senior executives) to develop supervisors and managers as agents of the State emphasizing ethical and moral decision making while leading.

Continued work and partnerships with other state departments, coalitions, and community agencies for successful reentry across the state. These efforts focus on critical issues such as employment, education, substance abuse and mental health treatment, health care services, housing, community, and family support. Specific partnerships between the Department and reentry coalitions in Anchorage, Fairbanks, Mat-Su, Juneau, Kenai, Ketchikan, Dillingham, and Kodiak.

Continued partnerships with the local homeless/housing coalitions and community programs in Anchorage, Dillingham, Fairbanks, Juneau, Palmer, and Kenai Probation Offices to address reentry for those parolees/probationers returning to their communities.

Continued partnership with Alaska Housing Finance Corporation (AHFC) for the Returning Home Program, formerly known as the Tenant Based Rental Assistance Program (TBRA). This program provides eligible low-income probationer/parolees with financial assistance to obtain affordable housing for up to two years. This program is now in 12 Alaska communities. Of the 85 statewide allocated homes for the Division of Pretrial, Probation and Parole (DP3) from the Alaska Housing Finance Corporation (AHFC), there was a coupon utilization rate of 51.9%. Meanwhile in Utqiagvik the partnership with Barrow Probation and the Native Village of Utqiagvik and the Tagiugmiullu Nunamiullu Housing Authority (THNA) continues. The tribes are providing support and assistance to the offenders following the release from custody by providing temporary/transitional housing, including paying for their hotels for weeks/months.

Continued to cultivate a blended working relationship of Pretrial Service Officers and Statewide Probation and Parole Officers in many communities to provide support for each other and share resources where possible to provide more effective supervision and to create safer communities.

**Key Component Challenges**

Recruit, hire and retain a workforce of trained supervisors, probation officers and critical support staff.

Allocation of resources between probation offices and areas of the state, based on need and the fluctuating offender population.

Establishing and identifying offenders currently incarcerated that need additional assistance from the probation officers upon release.

Continuing to refine and implement policy and procedures relating to supervision standards for both urban and rural offenders that focuses on successful case planning and addresses the criminogenic needs of offenders.

Monitoring best practices in social responses to the changes in patterns of criminal activity due to the pandemic. (i.e.

increases in domestic violence and heightened existing vulnerabilities among individuals who have or are susceptible to substance abuse).

Continue to monitor the Probation Accountability with Certain Enforcement (PACE) program statewide.

Re-establishing community supervision and programming to include virtual meetings, tele-health, re-entry services, and substance abuse treatment statewide in a post pandemic environment.

### Significant Changes in Results to be Delivered in FY2025

No changes in results delivered.

### Statutory and Regulatory Authority

- 1) Probation, Prisons, Pardons, and Prisoners (AS 33)
- 2) Welfare, Social Services and Institutions (AS 47)
- 3) Health, Safety, Housing, Human Rights, and Public Defender (AS 18)
- 4) Criminal Law (AS 11)
- 5) Public Finance (AS 37)
- 6) State Government (AS 44)
- 7) Corrections (22 AAC)
- 8) Code of Criminal Procedure (AS 12)

Contact Information
<p><b>Contact:</b> Jennifer Winkelman, Commissioner <b>Phone:</b> (907) 465-3480 <b>E-mail:</b> jennifer.winkelman@alaska.gov</p>

Statewide Probation and Parole Personal Services Information				
Authorized Positions			Personal Services Costs	
	<u>FY2024</u> <u>Management</u> <u>Plan</u>	<u>FY2025</u> <u>Governor</u>		
Full-time	144	144	Annual Salaries	10,956,180
Part-time	0	0	COLA	546,249
Nonpermanent	0	0	Premium Pay	0
			Annual Benefits	7,290,407
			<i>Less 6.99% Vacancy Factor</i>	<i>(1,313,241)</i>
			Lump Sum Premium Pay	0
<b>Totals</b>	<b>144</b>	<b>144</b>	<b>Total Personal Services</b>	<b>17,479,595</b>

Position Classification Summary					
Job Class Title	Anchorage	Fairbanks	Juneau	Others	Total
Administrative Assistant 1	0	0	1	0	1
Administrative Assistant 2	1	0	0	0	1
Administrative Officer 1	0	1	0	1	2
Adult Probation Officer 1	10	3	2	8	23
Adult Probation Officer 2a	2	0	0	0	2
Adult Probation Officer 2b	24	9	3	14	50
Adult Probation Officer 3	8	2	1	12	23
Criminal Justice Technician 1	3	1	1	1	6
Criminal Justice Technician 2	9	2	0	14	25
Office Assistant 3	2	1	0	1	4
Ppp Admin 1	1	1	0	1	3
Ppp Admin 2	1	1	0	1	3
Ppp Admin 3	0	0	0	1	1
<b>Totals</b>	<b>61</b>	<b>21</b>	<b>8</b>	<b>54</b>	<b>144</b>

**Component Detail All Funds**  
**Department of Corrections**

**Component:** Statewide Probation and Parole (2826)  
**RDU:** Population Management (550)

Non-Formula Component

	FY2023 Actuals	FY2024 Enrolled	FY2024 Authorized	FY2024 Management Plan	FY2025 Governor Adjusted Base	FY2025 Governor	FY2024 Management Plan vs FY2025 Governor	
1000 Personal Services	14,588.7	15,965.1	15,965.1	15,965.1	17,479.6	17,479.6	1,514.5	9.5%
2000 Travel	215.6	226.1	226.1	226.1	226.1	226.1	0.0	0.0%
3000 Services	2,417.6	1,619.0	1,619.0	1,619.0	807.9	807.9	-811.1	-50.1%
4000 Commodities	391.9	345.2	345.2	345.2	345.2	345.2	0.0	0.0%
5000 Capital Outlay	0.0	0.0	0.0	0.0	0.0	0.0	0.0	0.0%
7000 Grants, Benefits	0.0	0.0	0.0	0.0	0.0	0.0	0.0	0.0%
8000 Miscellaneous	0.0	0.0	0.0	0.0	0.0	0.0	0.0	0.0%
<b>Totals</b>	<b>17,613.8</b>	<b>18,155.4</b>	<b>18,155.4</b>	<b>18,155.4</b>	<b>18,858.8</b>	<b>18,858.8</b>	<b>703.4</b>	<b>3.9%</b>
<b>Fund Sources:</b>								
1004 Gen Fund (UGF)	17,613.8	18,155.4	18,155.4	18,155.4	18,858.8	18,858.8	703.4	3.9%
<b>Unrestricted General (UGF)</b>	<b>17,613.8</b>	<b>18,155.4</b>	<b>18,155.4</b>	<b>18,155.4</b>	<b>18,858.8</b>	<b>18,858.8</b>	<b>703.4</b>	<b>3.9%</b>
<b>Designated General (DGF)</b>	<b>0.0</b>	<b>0.0</b>	<b>0.0</b>	<b>0.0</b>	<b>0.0</b>	<b>0.0</b>	<b>0.0</b>	<b>0.0%</b>
<b>Other Funds</b>	<b>0.0</b>	<b>0.0</b>	<b>0.0</b>	<b>0.0</b>	<b>0.0</b>	<b>0.0</b>	<b>0.0</b>	<b>0.0%</b>
<b>Federal Funds</b>	<b>0.0</b>	<b>0.0</b>	<b>0.0</b>	<b>0.0</b>	<b>0.0</b>	<b>0.0</b>	<b>0.0</b>	<b>0.0%</b>
<b>Positions:</b>								
Permanent Full Time	144	144	144	144	144	144	0	0.0%
Permanent Part Time	0	0	0	0	0	0	0	0.0%
Non Permanent	0	0	0	0	0	0	0	0.0%

**Change Record Detail - Multiple Scenarios with Descriptions**  
**Department of Corrections**

**Component:** Statewide Probation and Parole (2826)

**RDU:** Population Management (550)

Scenario/Change Record Title	Trans Type	Totals	Personal Services	Travel	Services	Commodities	Capital Outlay	Grants, Benefits	Miscellaneous	Positions		NP
										PFT	PPT	
***** Changes From FY2024 Enrolled To FY2024 Authorized *****												
<b>FY2024 Enrolled</b>												
1004 Gen Fund	Enrolled	18,155.4	15,965.1	226.1	1,619.0	345.2	0.0	0.0	0.0	144	0	0
		18,155.4										
	<b>Subtotal</b>	<b>18,155.4</b>	<b>15,965.1</b>	<b>226.1</b>	<b>1,619.0</b>	<b>345.2</b>	<b>0.0</b>	<b>0.0</b>	<b>0.0</b>	<b>144</b>	<b>0</b>	<b>0</b>

***** Changes From FY2024 Management Plan To FY2025 Governor Adjusted Base *****												
<b>FY2025 Salary, Health Insurance, and PERS Rate Adjustments</b>												
1004 Gen Fund	SalAdj	792.7	792.7	0.0	0.0	0.0	0.0	0.0	0.0	0	0	0
		792.7										

FY2025 Salary, Health Insurance, and PERS Rate Adjustments: \$792.7

FY2025 AlaskaCare Increase from \$1793 to \$1908.: \$40.0

FY2025 GGU health insurance increase from \$1573.50 to \$1579.50: \$8.2

FY2025 GGU 5% Cost of Living Adjustment: \$552.1

FY2025 PERS Rate Adjustment from 25.10% to 26.76%: \$192.4

<b>Transfer Authority Departmentwide to Meet Information Technology Charges</b>												
1004 Gen Fund	Trout	-89.3	0.0	0.0	-89.3	0.0	0.0	0.0	0.0	0	0	0

AAlign authority within the department to meet the FY2025 Information Technology helpdesk costs statewide. The helpdesk positions were transferred back to the department in FY2024 requiring the funding to be transferred to support the costs of these positions. This adjustment will transfer the budgeted authority from various other components' contractual services to the Information Technology component for statewide helpdesk support.

\$850.0 of general fund contractual services authorization is reallocated as follows:

- \$850.0 Information Technology MIS
- (\$2.9) Recruitment and Retention
- (\$4.6) Office of the Commissioner
- (\$18.6) Administrative Services
- (\$3.4) Research and Records
- (\$51.0) Pretrial Services
- (\$3.4) Correctional Academy
- (\$5.2) Classification and Furlough
- (\$5.2) Institution Director Office
- (\$4.1) Inmate Transportation Unit
- (\$89.0) Anchorage Correctional Complex
- (\$14.2) Anvil Mountain Correctional Center
- (\$35.3) Hiland Mountain Correctional Center

**Change Record Detail - Multiple Scenarios with Descriptions**  
**Department of Corrections**

**Component:** Statewide Probation and Parole (2826)

**RDU:** Population Management (550)

Scenario/Change Record Title	Trans Type	Totals	Personal Services	Travel	Services	Commodities	Capital Outlay	Grants, Benefits	Miscellaneous	Positions		NP
										PFT	PPT	
(\$30.5) Fairbanks Correctional Center												
(\$114.5) Goose Creek Correctional Center												
(\$12.4) Ketchikan Correctional Center												
(\$27.0) Lemon Creek Correctional Center												
(\$15.9) Mat-Su Correctional Center												
(\$36.5) Palmer Correctional Center												
(\$57.1) Spring Creek Correctional Center												
(\$41.2) Wildwood Correctional Center												
(\$15.7) Yukon-Kuskokwim Correctional Center												
(\$10.4) Point Mackenzie Correctional Center												
(\$2.3) Probation and Parole Director Office												
(\$89.3) Statewide Probation and Parole												
(\$6.9) Parole Board												
(\$2.3) Facilities Capital Improvement Unit												
(\$10.4) Electronic Monitoring												
(\$30.7) Behavioral Health Care												
(\$96.2) Physical Health Care												
(\$3.5) Reentry Unit												
(\$4.6) Health and Rehabilitation Director's Office												
(\$1.7) Substance Abuse Treatment Program												
(\$2.3) Sex Offender Management Program												
(\$1.7) Education Programs												
<b>Align Authority with Anticipated Personal Services Expenditures within Statewide Probation and Parole</b>												
LIT		0.0	721.8	0.0	-721.8	0.0	0.0	0.0	0.0	0	0	0
Transfer authority from services to personal services to cover anticipated personal services obligations. The remaining authority is sufficient to cover anticipated expenditures.												
<b>Subtotal</b>		<b>18,858.8</b>	<b>17,479.6</b>	<b>226.1</b>	<b>807.9</b>	<b>345.2</b>	<b>0.0</b>	<b>0.0</b>	<b>0.0</b>	<b>144</b>	<b>0</b>	<b>0</b>
***** Changes From FY2025 Governor Adjusted Base To FY2025 Governor *****												
<b>Totals</b>		<b>18,858.8</b>	<b>17,479.6</b>	<b>226.1</b>	<b>807.9</b>	<b>345.2</b>	<b>0.0</b>	<b>0.0</b>	<b>0.0</b>	<b>144</b>	<b>0</b>	<b>0</b>

**Line Item Detail (1676)**  
**Department of Corrections**  
**Travel**

**Component:** Statewide Probation and Parole (2826)

Line Number	Line Name		FY2023 Actuals	FY2024 Management Plan	FY2025 Governor
2000	Travel		215.6	226.1	226.1
Object Class	Servicing Agency	Explanation	FY2023 Actuals	FY2024 Management Plan	FY2025 Governor
<b>2000 Travel Detail Totals</b>			<b>215.6</b>	<b>226.1</b>	<b>226.1</b>
2000	In-State Employee Travel	Travel for probation officers to supervise probationers in the region. Probation officers and staff to attend continuing education and training classes, regional/statewide manager's meetings, and oversight of regional offices.	199.9	226.1	226.1
2002	Out of State Employee Travel	Out of State travel to attend meetings, convention, or conference.	9.6	0.0	0.0
2005	Moving Costs	New employee relocation/moving expenses.	6.1	0.0	0.0



**Line Item Detail (1676)**  
**Department of Corrections**  
**Services**

**Component:** Statewide Probation and Parole (2826)

Line Number	Line Name		FY2023 Actuals	FY2024 Management Plan	FY2025 Governor
3000	Services		2,417.6	1,619.0	807.9
Object Class	Servicing Agency	Explanation	FY2023 Actuals	FY2024 Management Plan	FY2025 Governor
<b>3000 Services Detail Totals</b>			<b>2,417.6</b>	<b>1,619.0</b>	<b>807.9</b>
3000	Education Services	Professional service costs related to conference registration fees, training, membership dues and other miscellaneous services.	14.1	5.0	5.0
3001	Financial Services	Financial account fees, penalties, fines, late fees, etc.	0.0	0.0	0.0
3003	Information Technology	Professional service costs related to computer consultant fees, outsource contracts, software licensing, software maintenance, conference registration fees, training, membership dues to professional organizations	5.3	0.0	0.0
3004	Telecommunications	Local and long distance telephone services and other related miscellaneous communication charges.	96.5	5.0	5.0
3005	Health Services	Professional Services related to drug testing.	5.2	3.6	3.6
3006	Delivery Services	Freight costs, delivery and express services, postage, messenger services, etc.	48.7	10.0	10.0
3008	Utilities	Public utility services for heat, water, sewage, electricity, and waste disposal.	26.5	0.0	0.0
3009	Structure/Infrastructure/Land	Room and office leases, inspections, janitorial services, snow removal, other repairs and maintenance.	43.3	25.0	25.0

**Line Item Detail (1676)**  
**Department of Corrections**  
**Services**

**Component:** Statewide Probation and Parole (2826)

Object Class	Servicing Agency	Explanation	FY2023 Actuals	FY2024 Management Plan	FY2025 Governor
<b>3000 Services Detail Totals</b>			<b>2,417.6</b>	<b>1,619.0</b>	<b>807.9</b>
3010	Equipment/Machinery	Minor repairs and rentals of office equipment not covered by maintenance or lease agreements; e.g., copiers, mailing machines, and other office equipment.	28.8	4.3	4.3
3011	Other Services	Professional service costs related to minor repairs and rentals of office equipment, vehicles, etc., not covered by maintenance or lease agreements.	117.1	0.0	33.2
3017	Inter-Agency Information Technology Non-Telecommunications	Admin - Department-wide Office of Information Technology (OIT) Core Services, OIT Server Hosting & Storage, OIT Licenses for Adobe, Microsoft and SQL rates charges.	432.8	294.8	144.8
3018	Inter-Agency Information Technology Telecommunications	Admin - Department-wide Office of Information Technology (OIT) Telephone charges.	50.4	50.0	50.0
3021	Inter-Agency Mail	Admin - Department-wide Central Mailroom service charges.	3.6	2.0	2.0
3022	Inter-Agency Human Resources	Admin - Department-wide Human Resource service charges.	134.3	80.0	72.8
3023	Inter-Agency Building Leases	Trans - Department-wide Office lease space charges.	1,203.5	1,022.1	400.0
3027	Inter-Agency Financial	Admin - Department-wide Integrated Resource Information System (IRIS) Financial, IRIS Human Resource Management (HRM)/Payroll, Alaska Data Enterprise Reporting (ALDER) charges.	21.0	11.5	11.5
3028	Inter-Agency Americans with Disabilities Act Compliance	Admin - Department-wide Americans with Disabilities Act (ADA) compliance charges.	5.3	0.3	0.3
3029	Inter-Agency Education/Training	PubSaf - Department-wide Certification and Training charges.	1.2	0.4	0.4
3035	Inter-Agency Other Equipment/Machinery	PubSaf - Department-wide Other equipment and machinery services.	9.2	0.0	0.0
3037	State Equipment Fleet	Trans - Department-wide State Equipment Fleet (SEF)	170.8	105.0	40.0

**Line Item Detail (1676)**  
**Department of Corrections**  
**Services**

**Component:** Statewide Probation and Parole (2826)

<b>Object Class</b>	<b>Servicing Agency</b>	<b>Explanation</b>	<b>FY2023 Actuals</b>	<b>FY2024 Management Plan</b>	<b>FY2025 Governor</b>
		<b>3000 Services Detail Totals</b>	<b>2,417.6</b>	<b>1,619.0</b>	<b>807.9</b>
		charges.			

**Line Item Detail (1676)**  
**Department of Corrections**  
**Commodities**

**Component:** Statewide Probation and Parole (2826)

<b>Line Number</b>	<b>Line Name</b>		<b>FY2023 Actuals</b>	<b>FY2024 Management Plan</b>	<b>FY2025 Governor</b>
4000	Commodities		391.9	345.2	345.2
<b>Object Class</b>	<b>Servicing Agency</b>	<b>Explanation</b>	<b>FY2023 Actuals</b>	<b>FY2024 Management Plan</b>	<b>FY2025 Governor</b>
<b>4000 Commodities Detail Totals</b>			<b>391.9</b>	<b>345.2</b>	<b>345.2</b>
4000	Business	Consumable office supplies, duplicating, data processing supplies; i.e., paper forms, printer and toner cartridges, clothing, uniforms, cleaning supplies and other related supplies.	197.3	215.2	215.2
4002	Household/Institutional	Food, non-food supplies and clothing and uniform costs.	4.5	0.0	0.0
4003	Scientific and Medical	Drug testing reagents for immediate field testing results.	38.8	40.0	40.0
4004	Safety	Other operating supplies including law enforcement, safety and electronics, and other related supplies.	151.3	90.0	90.0

**Inter-Agency Services (1682)**  
**Department of Corrections**

**Component:** Statewide Probation and Parole (2826)

				FY2023 Actuals	FY2024 Management Plan	FY2025 Governor
<b>Component Totals</b>				<b>2,032.1</b>	<b>1,566.1</b>	<b>721.8</b>
With Department of Administration				647.4	438.6	281.4
With Department of Transportation and Public Facilities				1,374.3	1,127.1	440.0
With Department of Public Safety				10.4	0.4	0.4
Object Class	Servicing Agency	Explanation	FY2023 Actuals	FY2024 Management Plan	FY2025 Governor	
3017	Inter-Agency Information Technology Non-Telecommunications	Admin - Department-wide Office of Information Technology (OIT) Core Services, OIT Server Hosting & Storage, OIT Licenses for Adobe, Microsoft and SQL rates charges.	432.8	294.8	144.8	
3018	Inter-Agency Information Technology Telecommunications	Admin - Department-wide Office of Information Technology (OIT) Telephone charges.	50.4	50.0	50.0	
3021	Inter-Agency Mail	Admin - Department-wide Central Mailroom service charges.	3.6	2.0	2.0	
3022	Inter-Agency Human Resources	Admin - Department-wide Human Resource service charges.	134.3	80.0	72.8	
3023	Inter-Agency Building Leases	Trans - Department-wide Office lease space charges.	1,203.5	1,022.1	400.0	
3027	Inter-Agency Financial	Admin - Department-wide Integrated Resource Information System (IRIS) Financial, IRIS Human Resource Management (HRM)/Payroll, Alaska Data Enterprise Reporting (ALDER) charges.	21.0	11.5	11.5	
3028	Inter-Agency Americans with Disabilities Act Compliance	Admin - Department-wide Americans with Disabilities Act (ADA) compliance charges.	5.3	0.3	0.3	
3029	Inter-Agency Education/Training	PubSaf - Department-wide Certification and Training charges.	1.2	0.4	0.4	
3035	Inter-Agency Other Equipment/Machinery	PubSaf - Department-wide Other equipment and machinery services.	9.2	0.0	0.0	
3037	State Equipment Fleet	Trans - Department-wide State Equipment Fleet (SEF) charges.	170.8	105.0	40.0	

**Personal Services Expenditure Detail**  
**Department of Corrections**

**Scenario:** FY2025 Governor (20959)  
**Component:** Statewide Probation and Parole (2826)  
**RDU:** Population Management (550)

PCN	Job Class Title	Time Status	Retire Code	Barg Unit	Location	Salary Sched	Range / Step	Comp Months	Split / Count	Annual Salaries	COLA	Premium Pay	Annual Benefits	Total Costs	UGF Amount
20-0004	Ppp Admin 3	FT	P	SS	Kenai	100	25K	12.0		136,032	0	0	79,139	215,171	215,171
20-0010	Criminal Justice Technician 1	FT	A	GP	Fairbanks	203	12A / B	10.0		36,751	2,595	0	31,045	70,391	70,391
20-0042	Ppp Admin 1	FT	P	SS	Anchorage	100	21N	12.0		113,734	0	0	69,945	183,679	183,679
20-4401	Administrative Officer 1	FT	A	GP	Fairbanks	203	17C / D	12.0		66,862	4,721	0	46,638	118,221	118,221
20-4403	Criminal Justice Technician 2	FT	A	GP	Anchorage	200	14N / O	12.0		70,842	5,003	0	48,279	124,124	124,124
20-4404	Adult Probation Officer 3	FT	P	SS	Fairbanks	503	20M	12.0		105,186	0	0	66,421	171,607	171,607
20-4405	Adult Probation Officer 2b	FT	P	GP	Fairbanks	103	18K	12.0		87,009	6,144	0	54,944	148,097	148,097
20-4406	Adult Probation Officer 2b	FT	P	GP	Fairbanks	103	18B / C	12.0		70,321	4,966	0	48,064	123,351	123,351
20-4407	Adult Probation Officer 2b	FT	P	GP	Anchorage	100	18B / C	12.0		68,010	4,803	0	47,111	119,924	119,924
20-4408	Adult Probation Officer 2b	FT	P	GP	Juneau	105	18E / F	12.0		77,452	5,469	0	51,004	133,925	133,925
20-4409	Adult Probation Officer 2b	FT	P	GP	Fairbanks	103	18K	12.0		87,009	6,144	0	54,944	148,097	148,097
20-4411	Criminal Justice Technician 2	FT	A	GP	Fairbanks	203	14E / F	12.0		58,899	4,159	0	43,355	106,413	106,413
20-4412	Adult Probation Officer 3	FT	P	SS	Utqiagvik	550	20L	12.0		148,366	0	0	84,224	232,590	232,590
20-4413	Criminal Justice Technician 2	FT	A	GP	Utqiagvik	250	14J	12.0		92,411	6,526	0	57,172	156,109	156,109
20-4415	Adult Probation Officer 1	FT	P	GP	Fairbanks	103	15A	10.0		44,541	3,145	0	34,256	81,942	81,942
20-4416	Criminal Justice Technician 2	FT	A	GP	Bethel	250	14E / F	12.0		85,245	6,020	0	54,217	145,482	145,482
20-4417	Adult Probation Officer 3	FT	P	SS	Anchorage	500	20A	10.0		63,249	0	0	45,288	108,537	108,537
20-4418	Ppp Admin 2	FT	P	SS	Palmer	100	23L	12.0		122,325	0	0	73,487	195,812	195,812
20-4419	Criminal Justice Technician 2	FT	A	GP	Nome	237	14C / D	12.0		71,544	5,052	0	48,568	125,164	125,164
20-4420	Adult Probation Officer 3	FT	P	SS	Bethel	550	20J	12.0		139,152	0	0	80,425	219,577	219,577
20-4421	Adult Probation Officer 2b	FT	P	GP	Palmer	100	18C / D	12.0		70,145	4,953	0	47,991	123,089	123,089
20-4422	Adult Probation Officer 2b	FT	P	GP	Fairbanks	103	18A	10.0		55,104	3,891	0	38,612	97,607	97,607
20-4426	Adult Probation Officer 3	FT	P	SS	Fairbanks	503	20M	12.0		105,186	0	0	66,421	171,607	171,607
20-4427	Adult Probation Officer 3	FT	P	SS	Anchorage	500	20S	12.0		123,739	0	0	74,070	197,809	197,809
20-4428	Adult Probation Officer 2b	FT	P	GP	Fairbanks	103	18G	12.0		80,964	5,717	0	52,452	139,133	139,133
20-4429	Adult Probation Officer 1	FT	P	GP	Fairbanks	103	15A	10.0		44,541	3,145	0	34,256	81,942	81,942
20-4430	Office Assistant 3	FT	A	GP	Fairbanks	203	11A / B	12.0		42,315	2,988	0	36,517	81,820	81,820
20-4431	Criminal Justice Technician 2	FT	A	GP	Kotzebue	260	14G	12.0		94,575	6,678	0	58,064	159,317	159,317
20-4433	Adult Probation Officer 2b	FT	P	GP	Anchorage	100	18E / F	12.0		73,722	5,206	0	49,466	128,394	128,394
20-4436	Criminal Justice Technician 2	FT	A	GP	Bethel	250	14L / M	12.0		99,447	7,022	0	60,073	166,542	166,542
20-4437	Criminal Justice Technician	FT	A	GP	Fairbanks	203	14B / C	12.0		52,576	3,713	0	40,748	97,037	97,037

Note: If a position is split, an asterisk (\*) will appear in the Split/Count column. If the split position is also counted in the component, two asterisks (\*\*) will appear in this column. [No valid job title] appearing in the Job Class Title indicates that the PCN has an invalid class code or invalid range for the class code effective date of this scenario.

**Personal Services Expenditure Detail**  
**Department of Corrections**

**Scenario:** FY2025 Governor (20959)  
**Component:** Statewide Probation and Parole (2826)  
**RDU:** Population Management (550)

PCN	Job Class Title	Time Status	Retire Code	Barg Unit	Location	Salary Sched	Range / Step	Comp Months	Split / Count	Annual Salaries	COLA	Premium Pay	Annual Benefits	Total Costs	UGF Amount
	2														
20-4438	Adult Probation Officer 3	FT	P	SS	Nome	537	20M	12.0		139,922	0	0	80,742	220,664	220,664
20-4439	Adult Probation Officer 2b	FT	P	GP	Fairbanks	103	18L	12.0		89,837	6,344	0	56,110	152,291	152,291
20-4443	Ppp Admin 1	FT	P	SS	Kenai	100	21N	12.0		113,734	0	0	69,945	183,679	183,679
20-4449	Adult Probation Officer 1	FT	P	GP	Palmer	100	15A	10.0		43,241	3,053	0	33,720	80,014	80,014
20-4450	Adult Probation Officer 2b	FT	P	GP	Palmer	100	18G	12.0		78,605	5,551	0	51,479	135,635	135,635
20-4451	Adult Probation Officer 2b	FT	P	GP	Palmer	100	18A / B	12.0		65,973	4,659	0	46,271	116,903	116,903
20-4454	Adult Probation Officer 2b	FT	P	GP	Anchorage	100	18B / C	12.0		68,570	4,842	0	47,342	120,754	120,754
20-4455	Adult Probation Officer 2b	FT	P	GP	Anchorage	100	18C / D	12.0		69,887	4,935	0	47,885	122,707	122,707
20-4456	Adult Probation Officer 2b	FT	P	GP	Ketchikan	100	18O	12.0		95,999	6,779	0	58,651	161,429	161,429
20-4457	Adult Probation Officer 2a	FT	P	GP	Anchorage	100	17N	12.0		86,931	6,139	0	54,912	147,982	147,982
20-4458	Adult Probation Officer 2b	FT	P	GP	Kenai	100	18J	12.0		81,822	5,778	0	52,806	140,406	140,406
20-4459	Adult Probation Officer 2b	FT	P	GP	Anchorage	100	18B / C	12.0		67,542	4,769	0	46,918	119,229	119,229
20-4460	Adult Probation Officer 1	FT	P	GP	Anchorage	100	15A	10.0		43,241	3,053	0	33,720	80,014	80,014
20-4461	Adult Probation Officer 1	FT	P	GP	Palmer	100	15A	10.0		43,241	3,053	0	33,720	80,014	80,014
20-4462	Adult Probation Officer 2b	FT	P	GP	Fairbanks	103	18F / G	12.0		79,019	5,580	0	51,650	136,249	136,249
20-4463	Adult Probation Officer 2a	FT	P	GP	Anchorage	100	17A / B	12.0		61,722	4,358	0	44,519	110,599	110,599
20-4464	Adult Probation Officer 2b	FT	P	GP	Anchorage	100	18E / F	12.0		73,886	5,217	0	49,534	128,637	128,637
20-4465	Adult Probation Officer 1	FT	P	GP	Anchorage	100	15A	10.0		43,241	3,053	0	33,720	80,014	80,014
20-4470	Adult Probation Officer 1	FT	P	GP	Bethel	150	15A	10.0		64,870	4,581	0	42,638	112,089	112,089
20-4471	Adult Probation Officer 2b	FT	P	GP	Anchorage	100	18B / C	12.0		67,580	4,772	0	46,934	119,286	119,286
20-4472	Ppp Admin 2	FT	P	SS	Fairbanks	103	23Q	12.0		147,826	0	0	84,001	231,827	231,827
20-4473	Adult Probation Officer 2b	FT	P	GP	Palmer	100	18C / D	12.0		70,878	5,005	0	48,294	124,177	124,177
20-4474	Adult Probation Officer 1	FT	P	GP	Anchorage	100	15G	12.0		64,194	4,533	0	45,538	114,265	114,265
20-4475	Adult Probation Officer 2b	FT	P	GP	Anchorage	100	18D / E	12.0		71,935	5,080	0	48,729	125,744	125,744
20-4476	Adult Probation Officer 1	FT	P	GP	Bethel	150	15A	10.0		64,870	4,581	0	42,638	112,089	112,089
20-4477	Adult Probation Officer 2b	FT	P	GP	Fairbanks	103	18G	12.0		80,964	5,717	0	52,452	139,133	139,133
20-4478	Administrative Assistant 1	FT	A	GP	Juneau	205	12A	10.0		37,001	2,613	0	31,148	70,762	70,762
20-4479	Criminal Justice Technician	FT	A	GP	Anchorage	100	14J	12.0		62,166	4,390	0	44,702	111,258	111,258
	2														
20-4481	Criminal Justice Technician	FT	A	GP	Ketchikan	100	14B / C	12.0		50,339	3,555	0	39,825	93,719	93,719
	2														
20-4483	Criminal Justice Technician	FT	A	GP	Anchorage	100	14G	12.0		59,670	4,214	0	43,673	107,557	107,557
	2														
20-4485	Adult Probation Officer 2b	FT	P	GP	Kenai	100	18F / G	12.0		77,712	5,488	0	51,111	134,311	134,311
20-4486	Adult Probation Officer 2b	FT	P	GP	Juneau	105	18D / E	12.0		74,925	5,291	0	49,962	130,178	130,178
20-5019	Office Assistant 3	FT	A	GP	Palmer	200	11L	12.0		53,372	3,769	0	41,076	98,217	98,217
20-5400	Adult Probation Officer 2b	FT	P	GP	Juneau	105	18G	12.0		82,544	5,829	0	53,104	141,477	141,477
20-5402	Adult Probation Officer 3	FT	P	SS	Juneau	505	20K	12.0		100,568	0	0	64,517	165,085	165,085

Note: If a position is split, an asterisk (\*) will appear in the Split/Count column. If the split position is also counted in the component, two asterisks (\*\*) will appear in this column.  
[No valid job title] appearing in the Job Class Title indicates that the PCN has an invalid class code or invalid range for the class code effective date of this scenario.

**Personal Services Expenditure Detail**  
**Department of Corrections**

**Scenario:** FY2025 Governor (20959)  
**Component:** Statewide Probation and Parole (2826)  
**RDU:** Population Management (550)

PCN	Job Class Title	Time Status	Retire Code	Barg Unit	Location	Salary Sched	Range / Step	Comp Months	Split / Count	Annual Salaries	COLA	Premium Pay	Annual Benefits	Total Costs	UGF Amount
20-5403	Ppp Admin 1	FT	P	SS	Fairbanks	103	21O	12.0		120,952	0	0	72,921	193,873	193,873
20-5406	Criminal Justice Technician 1	FT	A	GP	Juneau	205	12A / B	10.0		37,463	2,645	0	31,338	71,446	71,446
20-5407	Adult Probation Officer 3	FT	P	SS	Ketchikan	500	20L	12.0		98,904	0	0	63,831	162,735	162,735
20-5408	Adult Probation Officer 1	FT	P	GP	Ketchikan	100	15L	12.0		71,214	5,029	0	48,432	124,675	124,675
20-5409	Criminal Justice Technician 2	FT	A	GP	Ketchikan	200	14R	12.0		79,541	5,617	0	51,865	137,023	137,023
20-5410	Criminal Justice Technician 2	FT	A	GP	Sitka	99	14Q	12.0		82,115	5,799	0	52,927	140,841	140,841
20-5413	Adult Probation Officer 3	FT	P	SS	Sitka	505	20O	12.0		114,338	0	0	70,194	184,532	184,532
20-5419	Adult Probation Officer 2b	FT	P	GP	Kenai	100	18K	12.0		84,474	5,965	0	53,899	144,338	144,338
20-5420	Criminal Justice Technician 1	FT	A	GP	Anchorage	200	12B / C	12.0		44,949	3,174	0	37,603	85,726	85,726
20-5423	Adult Probation Officer 2b	FT	P	GP	Kenai	100	18D / E	12.0		72,467	5,117	0	48,949	126,533	126,533
20-5424	Criminal Justice Technician 1	FT	A	GP	Anchorage	200	12A	10.0		35,246	2,489	0	30,424	68,159	68,159
20-6412	Adult Probation Officer 2b	FT	P	GP	Anchorage	100	18C / D	12.0		70,462	4,976	0	48,122	123,560	123,560
20-6431	Adult Probation Officer 3	FT	P	SS	Anchorage	500	20N	12.0		105,456	0	0	66,532	171,988	171,988
20-6707	Adult Probation Officer 2b	FT	P	GP	Anchorage	100	18G	12.0		78,605	5,551	0	51,479	135,635	135,635
20-6779	Adult Probation Officer 3	FT	P	SS	Dillingham	537	20F	12.0		123,094	0	0	73,804	196,898	196,898
20-6803	Adult Probation Officer 3	FT	P	SS	Anchorage	500	20J	12.0		92,768	0	0	61,301	154,069	154,069
20-6804	Adult Probation Officer 2b	FT	P	GP	Anchorage	100	18B / C	12.0		68,103	4,809	0	47,150	120,062	120,062
20-6806	Criminal Justice Technician 2	FT	A	GP	Anchorage	200	14F / G	12.0		57,470	4,058	0	42,766	104,294	104,294
20-6807	Adult Probation Officer 1	FT	P	GP	Anchorage	100	15A	10.0		43,241	3,053	0	33,720	80,014	80,014
20-6808	Adult Probation Officer 2b	FT	P	GP	Anchorage	100	18E / F	12.0		74,166	5,237	0	49,649	129,052	129,052
20-6809	Adult Probation Officer 2b	FT	P	GP	Anchorage	100	18M / N	12.0		90,295	6,376	0	56,299	152,970	152,970
20-6810	Adult Probation Officer 2b	FT	P	GP	Anchorage	100	18C / D	12.0		69,134	4,882	0	47,575	121,591	121,591
20-6811	Office Assistant 3	FT	A	GP	Anchorage	200	11B / C	12.0		41,721	2,946	0	36,272	80,939	80,939
20-6812	Criminal Justice Technician 2	FT	A	GP	Anchorage	200	14G	12.0		59,105	4,174	0	43,440	106,719	106,719
20-6813	Office Assistant 3	FT	A	GP	Anchorage	200	11A	10.0		33,280	2,350	0	29,614	65,244	65,244
20-6815	Adult Probation Officer 3	FT	P	SS	Anchorage	500	20M	12.0		102,128	0	0	65,160	167,288	167,288
20-6816	Adult Probation Officer 3	FT	P	SS	Anchorage	500	20A / B	10.0		65,589	0	0	46,253	111,842	111,842
20-6820	Adult Probation Officer 1	FT	P	GP	Anchorage	100	15C / D	12.0		56,605	3,997	0	42,409	103,011	103,011
20-6821	Adult Probation Officer 1	FT	P	GP	Juneau	105	15A	10.0		45,403	3,206	0	34,612	83,221	83,221
20-6822	Adult Probation Officer 1	FT	P	GP	Anchorage	100	15A	10.0		43,241	3,053	0	33,720	80,014	80,014
20-6823	Adult Probation Officer 2b	FT	P	GP	Anchorage	100	18B / C	12.0		67,056	4,735	0	46,718	118,509	118,509
20-6824	Adult Probation Officer 2b	FT	P	GP	Anchorage	100	18O / P	12.0		96,155	6,790	0	58,715	161,660	161,660

Note: If a position is split, an asterisk (\*) will appear in the Split/Count column. If the split position is also counted in the component, two asterisks (\*\*) will appear in this column. [No valid job title] appearing in the Job Class Title indicates that the PCN has an invalid class code or invalid range for the class code effective date of this scenario.



**Personal Services Expenditure Detail**  
**Department of Corrections**

**Scenario:** FY2025 Governor (20959)  
**Component:** Statewide Probation and Parole (2826)  
**RDU:** Population Management (550)

PCN	Job Class Title	Time Status	Retire Code	Barg Unit	Location	Salary Sched	Range / Step	Comp Months	Split / Count	Annual Salaries	COLA	Premium Pay	Annual Benefits	Total Costs	UGF Amount
20-6825	Adult Probation Officer 3	FT	P	SS	Anchorage	500	20A	10.0		63,249	0	0	45,288	108,537	108,537
20-6826	Adult Probation Officer 2b	FT	P	GP	Anchorage	100	18E / F	12.0		74,939	5,292	0	49,968	130,199	130,199
20-6827	Adult Probation Officer 1	FT	P	GP	Anchorage	100	15B / C	12.0		54,961	3,881	0	41,731	100,573	100,573
20-6828	Adult Probation Officer 2b	FT	P	GP	Anchorage	100	18Q	12.0		102,336	7,226	0	61,264	170,826	170,826
20-6830	Adult Probation Officer 1	FT	P	GP	Anchorage	100	15E / F	12.0		61,204	4,322	0	44,305	109,831	109,831
20-6833	Administrative Assistant 2	FT	A	GP	Anchorage	200	14J	12.0		61,601	4,350	0	44,469	110,420	110,420
20-6835	Administrative Officer 1	FT	A	GP	Palmer	200	17N	12.0		86,132	6,082	0	54,583	146,797	146,797
20-6836	Criminal Justice Technician 2	FT	A	GP	Anchorage	200	14C / D	12.0		51,688	3,650	0	40,382	95,720	95,720
20-6837	Adult Probation Officer 2b	FT	P	GP	Anchorage	100	18G	12.0		78,605	5,551	0	51,479	135,635	135,635
20-6838	Criminal Justice Technician 2	FT	A	GP	Anchorage	99	14O	12.0		72,599	5,127	0	49,003	126,729	126,729
20-6839	Criminal Justice Technician 2	FT	A	GP	Palmer	200	14F / G	12.0		58,341	4,120	0	43,125	105,586	105,586
20-6840	Criminal Justice Technician 1	FT	A	GP	Anchorage	200	12A / B	10.0		35,682	2,520	0	30,604	68,806	68,806
20-6841	Adult Probation Officer 3	FT	P	SS	Kodiak	511	20A	10.0		70,200	0	0	48,154	118,354	118,354
20-6842	Adult Probation Officer 3	FT	P	SS	Kenai	500	20O	12.0		108,888	0	0	67,947	176,835	176,835
20-6843	Adult Probation Officer 1	FT	P	GP	Kenai	100	15A / B	12.0		53,541	3,781	0	41,146	98,468	98,468
20-6844	Criminal Justice Technician 2	FT	A	GP	Kenai	200	14C / D	12.0		52,991	3,742	0	40,919	97,652	97,652
20-6845	Adult Probation Officer 3	FT	P	SS	Anchorage	500	20L / M	12.0		99,576	0	0	64,108	163,684	163,684
20-6846	Criminal Justice Technician 1	FT	A	GP	Kodiak	211	12F / G	12.0		55,618	3,927	0	42,002	101,547	101,547
20-6847	Adult Probation Officer 3	FT	P	SS	Palmer	500	20M	12.0		102,128	0	0	65,160	167,288	167,288
20-6848	Criminal Justice Technician 2	FT	A	GP	Palmer	100	14C / D	12.0		52,908	3,736	0	40,885	97,529	97,529
20-6849	Adult Probation Officer 2b	FT	P	GP	Anchorage	100	18G	12.0		78,605	5,551	0	51,479	135,635	135,635
20-6850	Adult Probation Officer 2b	FT	P	GP	Kenai	100	18G	12.0		78,605	5,551	0	51,479	135,635	135,635
20-6852	Adult Probation Officer 2b	FT	P	GP	Anchorage	100	18B / C	12.0		68,103	4,809	0	47,150	120,062	120,062
20-6853	Adult Probation Officer 1	FT	P	GP	Fairbanks	103	15E / F	12.0		61,582	4,349	0	44,461	110,392	110,392
20-6854	Adult Probation Officer 2b	FT	P	GP	Anchorage	100	18B / C	12.0		68,757	4,855	0	47,419	121,031	121,031
20-6855	Adult Probation Officer 1	FT	P	GP	Bethel	150	15A	10.0		64,870	4,581	0	42,638	112,089	112,089
20-6856	Adult Probation Officer 1	FT	P	GP	Anchorage	100	15A	10.0		43,241	3,053	0	33,720	80,014	80,014
20-6857	Adult Probation Officer 2b	FT	P	GP	Anchorage	99	18O	12.0		84,416	5,961	0	53,875	144,252	144,252
20-6859	Criminal Justice Technician 2	FT	A	GP	Kenai	200	14K	12.0		63,609	4,492	0	45,297	113,398	113,398
20-6860	Adult Probation Officer 2b	FT	P	GP	Palmer	100	18D / E	12.0		71,326	5,037	0	48,478	124,841	124,841
20-6861	Adult Probation Officer 2b	FT	P	GP	Kenai	100	18R	12.0		105,671	7,462	0	62,639	175,772	175,772

Note: If a position is split, an asterisk (\*) will appear in the Split/Count column. If the split position is also counted in the component, two asterisks (\*\*) will appear in this column. [No valid job title] appearing in the Job Class Title indicates that the PCN has an invalid class code or invalid range for the class code effective date of this scenario.

**Personal Services Expenditure Detail**  
**Department of Corrections**

**Scenario:** FY2025 Governor (20959)  
**Component:** Statewide Probation and Parole (2826)  
**RDU:** Population Management (550)

PCN	Job Class Title	Time Status	Retire Code	Barg Unit	Location	Salary Sched	Range / Step	Comp Months	Split / Count	Annual Salaries	COLA	Premium Pay	Annual Benefits	Total Costs	UGF Amount
20-6863	Adult Probation Officer 2b	FT	P	GP	Bethel	150	18G	12.0		117,917	8,327	0	67,688	193,932	193,932
20-6864	Criminal Justice Technician 2	FT	A	GP	Dillingham	237	14M	12.0		92,879	6,559	0	57,365	156,803	156,803
20-6866	Adult Probation Officer 3	FT	P	GP	Palmer	100	20A	12.0		73,418	5,184	0	49,341	127,943	127,943
20-6867	Adult Probation Officer 1	FT	P	GP	Juneau	105	15A	10.0		45,403	3,206	0	34,612	83,221	83,221
20-6868	Criminal Justice Technician 2	FT	A	GP	Anchorage	200	14C / D	12.0		53,313	3,765	0	41,052	98,130	98,130
20-6869	Criminal Justice Technician 2	FT	A	GP	Palmer	200	14C / D	12.0		53,313	3,765	0	41,052	98,130	98,130
20-6870	Adult Probation Officer 3	FT	P	SS	Palmer	500	20P	12.0		112,424	0	0	69,405	181,829	181,829
20-6871	Criminal Justice Technician 2	FT	A	GP	Anchorage	200	14F / G	12.0		58,142	4,106	0	43,043	105,291	105,291
20-6872	Adult Probation Officer 2b	FT	P	GP	Nome	137	18Q	12.0		140,205	9,901	0	76,877	226,983	226,983
20-6873	Adult Probation Officer 2b	FT	P	GP	Anchorage	100	18O / P	12.0		96,389	6,807	0	58,812	162,008	162,008
20-6875	Adult Probation Officer 1	FT	P	GP	Palmer	100	15A	10.0		43,241	3,053	0	33,720	80,014	80,014
20-6876	Adult Probation Officer 2b	FT	P	GP	Fairbanks	103	18B / C	12.0		68,620	4,846	0	47,363	120,829	120,829
20-6877	Adult Probation Officer 3	FT	P	SS	Kotzebue	560	20M	12.0		163,405	0	0	90,424	253,829	253,829
20-6880	Adult Probation Officer 1	FT	P	GP	Anchorage	100	15A	10.0		43,241	3,053	0	33,720	80,014	80,014
20-7202	Ppp Admin 2	FT	P	SS	Anchorage	100	23K	12.0		118,477	0	0	71,901	190,378	190,378

<b>Total Positions</b>				<b>Total Salary Costs:</b>	10,956,180
<b>Full Time Positions:</b>				<b>Total COLA:</b>	546,249
<b>Part Time Positions:</b>				<b>Total Premium Pay:</b>	0
<b>Non Permanent Positions:</b>				<b>Total Benefits:</b>	7,290,407
<b>Positions in Component:</b>				<b>Total Pre-Vacancy:</b>	18,792,836
				<b>Minus Vacancy Adjustment of 6.99%:</b>	(1,313,241)
				<b>Total Post-Vacancy:</b>	17,479,595
				<b>Plus Lump Sum Premium Pay:</b>	0
				<b>Personal Services Line 100:</b>	17,479,595

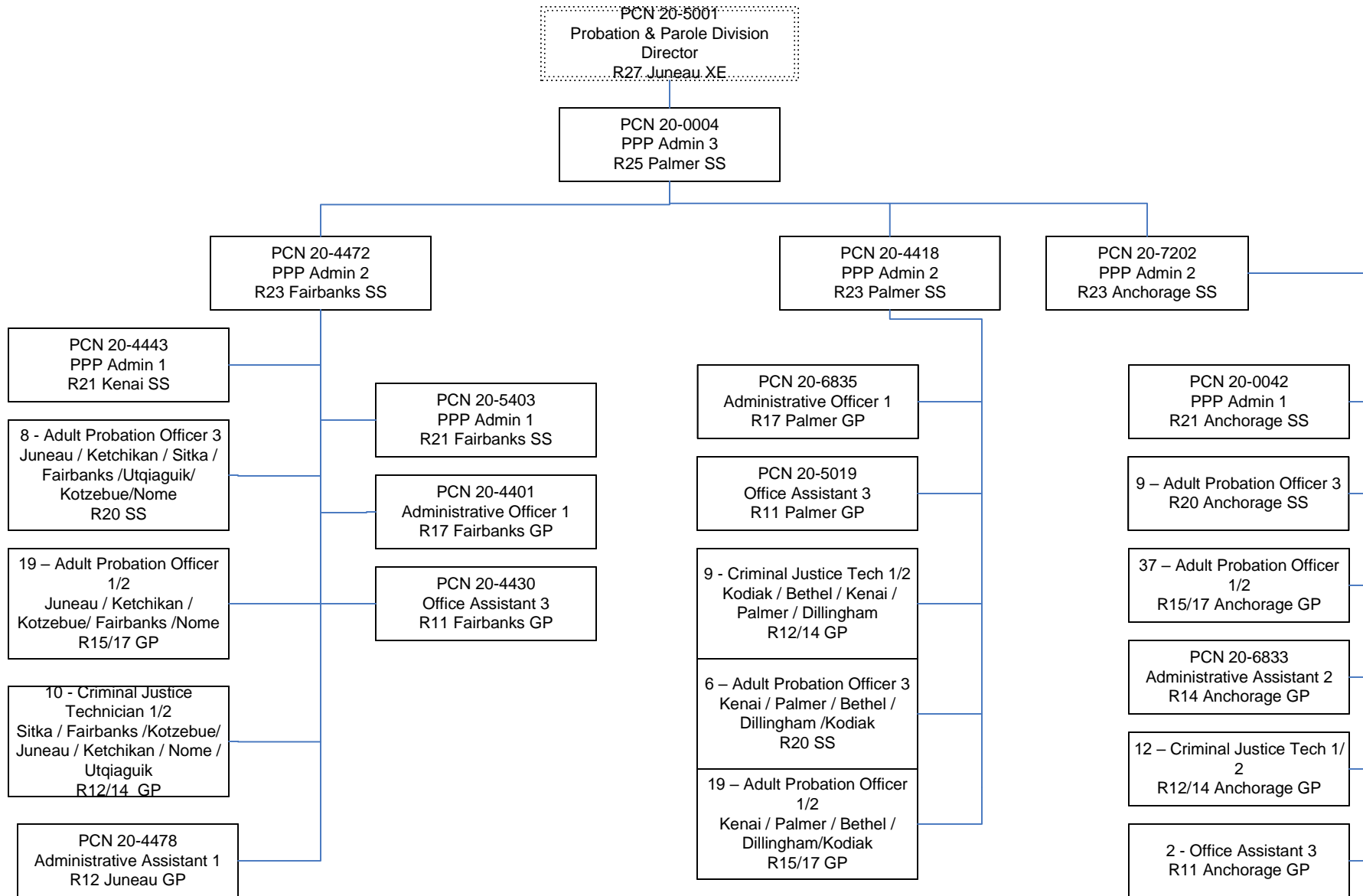
PCN Funding Sources:	Pre-Vacancy	Post-Vacancy	Percent
1004 Unrestricted General Fund Receipts	18,792,836	17,479,595	100.00%
<b>Total PCN Funding:</b>	<b>18,792,836</b>	<b>17,479,595</b>	<b>100.00%</b>

Note: If a position is split, an asterisk (\*) will appear in the Split/Count column. If the split position is also counted in the component, two asterisks (\*\*) will appear in this column. [No valid job title] appearing in the Job Class Title indicates that the PCN has an invalid class code or invalid range for the class code effective date of this scenario.

# Department of Corrections

## Statewide Probation & Parole

### FY 2025 Organizational Structure



Note: Boxes with dotted lines are budgeted within a separate component.