

# **State of Alaska FY2025 Governor's Operating Budget**

## **Department of Corrections Electronic Monitoring RDU/Component Budget Summary**

RDU/Component: Electronic Monitoring

## Contribution to Department's Mission

Manage offenders placed on Electronic Monitoring.

## Core Services

- Provide a Secure Detention Alternative

## Major Component Accomplishments in 2023

Continued permitting placements with certified private providers for first time Operating Under the Influence (OUI), Driving Under the Influence (DUI), and refusal cases. There were 1,075 first time OUI/DUI and refusal cases and 290 of those offenders completed their sentence.

Placed 1,679 sentenced offenders on the EM program and successfully discharged 1,503 during FY2023. The total number of placements on EM represents a 17 percent increase over FY2022. In FY2023, 1,392 offenders reported from the community to sentenced EM program, diverting booking into a state correctional facility to sentenced EM. In FY2023 the average length of stay for an offender on the EM program was 40.8 days, which is an increase of 16.3 days from FY2022.

Maintained a 90 percent success rate of those offenders placed on to the EM program.

Maintained sentenced EM programs in Anchorage, Fairbanks, Juneau, Kenai, Ketchikan, Kodiak, and the Matanuska Susitna Valley.

## Key Component Challenges

Recruitment and retention of well-trained staff to maintain public safety and successful offender reentry.

Maintain a viable and successful Electronic Monitoring (EM) program while assuring public safety.

Complete required weekly random urinalysis tests on participants.

Increase participant placement with limited staffing while assuring public safety.

Utilize BI Link system to provide accurate supervision on sentenced Electronic Monitoring to enhance supervision and public safety.

Increase collections of receipts associated with monitoring equipment and program staff costs.

## Significant Changes in Results to be Delivered in FY2025

No changes in results delivered.

## Statutory and Regulatory Authority

- 1) Probation, Prisons, Pardons, and Prisoners (AS 33)
- 2) Welfare, Social Services and Institutions (AS 47)
- 3) Health, Safety, Housing, Human Rights, and Public Defender (AS 18)
- 4) Criminal Law (AS 11)
- 5) Public Finance (AS 37)
- 6) State Government (AS 44)

- 7) Corrections (22 AAC)
- 8) Code of Criminal Procedure (AS 12)

Contact Information
<p><b>Contact:</b> Jennifer Winkelman, Commissioner <b>Phone:</b> (907) 465-3480 <b>E-mail:</b> Jennifer.winkelman@alaska.gov</p>

Electronic Monitoring Personal Services Information				
Authorized Positions			Personal Services Costs	
	<u>FY2024</u> <u>Management</u> <u>Plan</u>	<u>FY2025</u> <u>Governor</u>		
Full-time	15	15	Annual Salaries	1,003,665
Part-time	0	0	COLA	53,363
Nonpermanent	0	0	Premium Pay	0
			Annual Benefits	711,814
			<i>Less 3.52% Vacancy Factor</i>	(62,342)
			Lump Sum Premium Pay	0
<b>Totals</b>	<b>15</b>	<b>15</b>	<b>Total Personal Services</b>	<b>1,706,500</b>

Position Classification Summary					
Job Class Title	Anchorage	Fairbanks	Juneau	Others	Total
Adult Probation Officer 1	0	0	1	0	1
Adult Probation Officer 2b	5	0	0	1	6
Adult Probation Officer 3	1	1	0	0	2
Criminal Justice Technician 1	1	1	1	0	3
Criminal Justice Technician 2	0	0	0	1	1
Office Assistant 3	1	0	0	0	1
Ppp Admin 1	1	0	0	0	1
<b>Totals</b>	<b>9</b>	<b>2</b>	<b>2</b>	<b>2</b>	<b>15</b>

**Component Detail All Funds**  
**Department of Corrections**

**Component:** Electronic Monitoring (2431)  
**RDU:** Electronic Monitoring (696)

Non-Formula Component

	<b>FY2023 Actuals</b>	<b>FY2024 Enrolled</b>	<b>FY2024 Authorized</b>	<b>FY2024 Management Plan</b>	<b>FY2025 Governor Adjusted Base</b>	<b>FY2025 Governor</b>	<b>FY2024 Management Plan vs FY2025 Governor</b>	
1000 Personal Services	1,431.1	1,555.5	1,555.5	1,555.5	1,706.5	1,706.5	151.0	9.7%
2000 Travel	1.6	0.0	0.0	0.0	0.0	0.0	0.0	0.0%
3000 Services	924.5	616.3	616.3	616.3	529.9	904.9	288.6	46.8%
4000 Commodities	78.2	151.1	151.1	151.1	151.1	151.1	0.0	0.0%
5000 Capital Outlay	0.0	0.0	0.0	0.0	0.0	0.0	0.0	0.0%
7000 Grants, Benefits	0.0	0.0	0.0	0.0	0.0	0.0	0.0	0.0%
8000 Miscellaneous	0.0	0.0	0.0	0.0	0.0	0.0	0.0	0.0%
<b>Totals</b>	<b>2,435.4</b>	<b>2,322.9</b>	<b>2,322.9</b>	<b>2,322.9</b>	<b>2,387.5</b>	<b>2,762.5</b>	<b>439.6</b>	<b>18.9%</b>
<b>Fund Sources:</b>								
1004 Gen Fund (UGF)	1,945.3	2,054.0	2,054.0	2,054.0	2,106.8	2,106.8	52.8	2.6%
1005 GF/Prgm (DGF)	490.1	268.9	268.9	268.9	280.7	655.7	386.8	143.8%
<b>Unrestricted General (UGF)</b>	<b>1,945.3</b>	<b>2,054.0</b>	<b>2,054.0</b>	<b>2,054.0</b>	<b>2,106.8</b>	<b>2,106.8</b>	<b>52.8</b>	<b>2.6%</b>
<b>Designated General (DGF)</b>	<b>490.1</b>	<b>268.9</b>	<b>268.9</b>	<b>268.9</b>	<b>280.7</b>	<b>655.7</b>	<b>386.8</b>	<b>143.8%</b>
<b>Other Funds</b>	<b>0.0</b>	<b>0.0</b>	<b>0.0</b>	<b>0.0</b>	<b>0.0</b>	<b>0.0</b>	<b>0.0</b>	<b>0.0%</b>
<b>Federal Funds</b>	<b>0.0</b>	<b>0.0</b>	<b>0.0</b>	<b>0.0</b>	<b>0.0</b>	<b>0.0</b>	<b>0.0</b>	<b>0.0%</b>
<b>Positions:</b>								
Permanent Full Time	15	15	15	15	15	15	0	0.0%
Permanent Part Time	0	0	0	0	0	0	0	0.0%
Non Permanent	0	0	0	0	0	0	0	0.0%

**Change Record Detail - Multiple Scenarios with Descriptions**  
**Department of Corrections**

**Component:** Electronic Monitoring (2431)  
**RDU:** Electronic Monitoring (696)

Scenario/Change Record Title	Trans Type	Totals	Personal Services	Travel	Services	Commodities	Capital Outlay	Grants, Benefits	Miscellaneous	Positions		NP
										PFT	PPT	
***** Changes From FY2024 Enrolled To FY2024 Authorized *****												
<b>FY2024 Enrolled</b>	Enrolled	2,322.9	1,555.5	0.0	616.3	151.1	0.0	0.0	0.0	15	0	0
1004 Gen Fund		2,054.0										
1005 GF/Prgm		268.9										
<b>Subtotal</b>		<b>2,322.9</b>	<b>1,555.5</b>	<b>0.0</b>	<b>616.3</b>	<b>151.1</b>	<b>0.0</b>	<b>0.0</b>	<b>0.0</b>	<b>15</b>	<b>0</b>	<b>0</b>

***** Changes From FY2024 Management Plan To FY2025 Governor Adjusted Base *****												
<b>FY2025 Salary, Health Insurance, and PERS Rate Adjustments</b>	SalAdj	75.0	75.0	0.0	0.0	0.0	0.0	0.0	0.0	0	0	0
1004 Gen Fund		63.2										
1005 GF/Prgm		11.8										

FY2025 Salary, Health Insurance, and PERS Rate Adjustments: \$75.0

FY2025 AlaskaCare Increase from \$1793 to \$1908.: \$4.1  
 FY2025 GGU health insurance increase from \$1573.50 to \$1579.50: \$0.9  
 FY2025 GGU 5% Cost of Living Adjustment: \$52.7  
 FY2025 PERS Rate Adjustment from 25.10% to 26.76%: \$17.3

**Transfer Authority Departmentwide to Meet Information Technology Charges**

	Trout	-10.4	0.0	0.0	-10.4	0.0	0.0	0.0	0.0	0	0	0
1004 Gen Fund		-10.4										

Align authority within the department to meet the FY2025 Information Technology helpdesk costs statewide. The helpdesk positions were transferred back to the department in FY2024 requiring the funding to be transferred to support the costs of these positions. This adjustment will transfer the budgeted authority from various other components' contractual services to the Information Technology component for statewide helpdesk support.

\$850.0 of general fund contractual services authorization is reallocated as follows:

- \$850.0 Information Technology MIS
- (\$2.9) Recruitment and Retention
- (\$4.6) Office of the Commissioner
- (\$18.6) Administrative Services
- (\$3.4) Research and Records
- (\$51.0) Pretrial Services
- (\$3.4) Correctional Academy
- (\$5.2) Classification and Furlough
- (\$5.2) Institution Director Office
- (\$4.1) Inmate Transportation Unit
- (\$89.0) Anchorage Correctional Complex

**Change Record Detail - Multiple Scenarios with Descriptions**  
**Department of Corrections**

**Component:** Electronic Monitoring (2431)  
**RDU:** Electronic Monitoring (696)

Scenario/Change Record Title	Trans Type	Totals	Personal Services	Travel	Services	Commodities	Capital Outlay	Grants, Benefits	Miscellaneous	Positions		NP
										PFT	PPT	
(\$14.2) Anvil Mountain Correctional Center												
(\$35.3) Hiland Mountain Correctional Center												
(\$30.5) Fairbanks Correctional Center												
(\$114.5) Goose Creek Correctional Center												
(\$12.4) Ketchikan Correctional Center												
(\$27.0) Lemon Creek Correctional Center												
(\$15.9) Mat-Su Correctional Center												
(\$36.5) Palmer Correctional Center												
(\$57.1) Spring Creek Correctional Center												
(\$41.2) Wildwood Correctional Center												
(\$15.7) Yukon-Kuskokwim Correctional Center												
(\$10.4) Point Mackenzie Correctional Center												
(\$2.3) Probation and Parole Director Office												
(\$89.3) Statewide Probation and Parole												
(\$6.9) Parole Board												
(\$2.3) Facilities Capital Improvement Unit												
(\$10.4) Electronic Monitoring												
(\$30.7) Behavioral Health Care												
(\$96.2) Physical Health Care												
(\$3.5) Reentry Unit												
(\$4.6) Health and Rehabilitation Director's Office												
(\$1.7) Substance Abuse Treatment Program												
(\$2.3) Sex Offender Management Program												
(\$1.7) Education Programs												
<b>Align Authority with Anticipated Personal Services Expenditures within Electronic Monitoring</b>												
LIT		0.0	76.0	0.0	-76.0	0.0	0.0	0.0	0.0	0	0	0
Transfer authority from services to personal services to cover anticipated personal services obligations. The remaining authority is sufficient to cover anticipated expenditures.												
<b>Subtotal</b>		<b>2,387.5</b>	<b>1,706.5</b>	<b>0.0</b>	<b>529.9</b>	<b>151.1</b>	<b>0.0</b>	<b>0.0</b>	<b>0.0</b>	<b>15</b>	<b>0</b>	<b>0</b>
***** <b>Changes From FY2025 Governor Adjusted Base To FY2025 Governor</b> *****												
<b>Increase Authority to Address Rising Costs in Electronic Monitoring Program</b>												
Inc		375.0	0.0	0.0	375.0	0.0	0.0	0.0	0.0	0	0	0
1005 GF/Prgm		375.0										

Add authority to meet the costs associated with the use of electronic monitoring (EM) tracking of those offenders placed in the community. This effort is to enhance public safety by utilizing available technology allowing the department to monitor an offender's location in real time while they transition back into the community. The EM program provides an alternative to incarceration and allows offenders that qualify to serve their sentence at a lower cost freeing up institutional "hard" beds for more serious offenders. The average daily count for FY2023 was 192, for FY2024 is 212, and the daily count as of 10/31/2023 was

**Change Record Detail - Multiple Scenarios with Descriptions**  
**Department of Corrections**

**Component:** Electronic Monitoring (2431)  
**RDU:** Electronic Monitoring (696)

Scenario/Change Record Title	Trans Type	Totals	Personal Services	Travel	Services	Commodities	Capital Outlay	Grants, Benefits	Miscellaneous	Positions		
										PFT	PPT	NP
217.												
	<b>Totals</b>	<b>2,762.5</b>	<b>1,706.5</b>	<b>0.0</b>	<b>904.9</b>	<b>151.1</b>	<b>0.0</b>	<b>0.0</b>	<b>0.0</b>	<b>15</b>	<b>0</b>	<b>0</b>



**Line Item Detail (1676)**  
**Department of Corrections**  
**Travel**

**Component:** Electronic Monitoring (2431)

Line Number	Line Name		FY2023 Actuals	FY2024 Management Plan	FY2025 Governor
2000	Travel		1.6	0.0	0.0
Object Class	Servicing Agency	Explanation	FY2023 Actuals	FY2024 Management Plan	FY2025 Governor
<b>2000 Travel Detail Totals</b>			<b>1.6</b>	<b>0.0</b>	<b>0.0</b>
2000	In-State Employee Travel	Travel to provide electronic monitoring training.	1.6	0.0	0.0

**Line Item Detail (1676)**  
**Department of Corrections**  
**Services**

**Component:** Electronic Monitoring (2431)

<b>Line Number</b>	<b>Line Name</b>		<b>FY2023 Actuals</b>	<b>FY2024 Management Plan</b>	<b>FY2025 Governor</b>
3000	Services		924.5	616.3	904.9
<b>Object Class</b>	<b>Servicing Agency</b>	<b>Explanation</b>	<b>FY2023 Actuals</b>	<b>FY2024 Management Plan</b>	<b>FY2025 Governor</b>
<b>3000 Services Detail Totals</b>			<b>924.5</b>	<b>616.3</b>	<b>904.9</b>
3000	Education Services	Professional service costs related to conference registration fees, training, membership dues and other miscellaneous services.	0.3	0.0	0.3
3002	Legal and Judicial Services	Community Jails custody services for electronic monitoring and supervision by local law enforcement agencies of those offenders within their communities.	30.0	15.0	30.0
3003	Information Technology	Professional service costs related to computer consultant fees, outsource contracts, software licensing, software maintenance, conference registration fees, training, and membership dues to professional organizations.	0.0	0.0	2.5
3004	Telecommunications	Local and long distance telephone services and other related miscellaneous communication charges.	14.3	7.5	14.3
3005	Health Services	Professional service contracts, i.e., psychiatric and psychological services, physical therapy, hospitalization, etc.	0.0	0.0	0.6
3006	Delivery Services	Freight costs, delivery and express services, postage, messenger services, etc.	7.4	2.0	7.4
3008	Utilities	Public utility services for heat, water,	0.4	2.0	2.0

**Line Item Detail (1676)**  
**Department of Corrections**  
**Services**

**Component:** Electronic Monitoring (2431)

Object Class	Servicing Agency	Explanation	FY2023 Actuals	FY2024 Management Plan	FY2025 Governor
<b>3000 Services Detail Totals</b>			<b>924.5</b>	<b>616.3</b>	<b>904.9</b>
		sewage, electricity, and waste disposal.			
3009	Structure/Infrastructure/Land	Room and office leases, inspections, janitorial services, snow removal, other repairs and maintenance.	2.3	5.0	5.0
3010	Equipment/Machinery	Minor repairs and rentals of vehicles/office equipment not covered by maintenance or lease agreements; e.g., copiers, mailing machines, and other office equipment.	1.5	2.0	2.0
3011	Other Services	Professional service contracts for offender supervision services and electronic monitoring.	785.3	509.8	764.3
3017	Inter-Agency Information Technology Non-Telecommunications	Admin - Department-wide Office of Information Technology (OIT) Core Services, OIT Server Hosting & Storage, OIT Licenses for Adobe, Microsoft and SQL rates charges.	39.0	27.1	27.1
3018	Inter-Agency Information Technology Telecommunications	Admin - Department-wide Office of Information Technology (OIT) Telephone charges.	3.1	4.2	4.2
3022	Inter-Agency Human Resources	Admin - Department-wide Human Resource service charges.	14.0	14.8	14.8
3023	Inter-Agency Building Leases	Trans - Department-wide Office lease space charges.	6.6	3.1	6.6
3027	Inter-Agency Financial	Admin - Department-wide Integrated Resource Information System (IRIS) Financial, IRIS Human Resource Management (HRM)/Payroll, Alaska Data Enterprise Reporting (ALDER) charges.	2.5	1.9	1.9
3028	Inter-Agency Americans with Disabilities Act Compliance	Admin - Department-wide Americans with Disabilities Act (ADA) compliance charges.	0.2	0.2	0.2
3035	Inter-Agency Other Equipment/Machinery	PubSaf - Department-wide Other equipment and machinery services.	0.3	0.0	0.0

**Line Item Detail (1676)**  
**Department of Corrections**  
**Services**

**Component:** Electronic Monitoring (2431)

Object Class	Servicing Agency	Explanation	FY2023 Actuals	FY2024 Management Plan	FY2025 Governor
<b>3000 Services Detail Totals</b>			<b>924.5</b>	<b>616.3</b>	<b>904.9</b>
3037 State Equipment Fleet	Trans - Department-wide	State Equipment Fleet (SEF) charges.	17.3	21.7	21.7

**Line Item Detail (1676)**  
**Department of Corrections**  
**Commodities**

**Component:** Electronic Monitoring (2431)

<b>Line Number</b>	<b>Line Name</b>		<b>FY2023 Actuals</b>	<b>FY2024 Management Plan</b>	<b>FY2025 Governor</b>
4000	Commodities		78.2	151.1	151.1
<b>Object Class</b>	<b>Servicing Agency</b>	<b>Explanation</b>	<b>FY2023 Actuals</b>	<b>FY2024 Management Plan</b>	<b>FY2025 Governor</b>
<b>4000 Commodities Detail Totals</b>			<b>78.2</b>	<b>151.1</b>	<b>151.1</b>
4000	Business	Consumable office supplies, duplicating, data processing supplies; i.e., paper forms, printer and toner cartridges, training supplies and reference supplies.	9.6	85.1	85.1
4002	Household/Institutional	Household and Institution - food, clothing and uniforms and cleaning supplies.	2.7	0.0	0.0
4003	Scientific and Medical	Operating supplies including safety, electronic, and other related program supplies.	40.4	51.0	51.0
4004	Safety	Other operating supplies including ammunition and law enforcement supplies.	25.5	15.0	15.0

**Revenue Detail (1681)**  
**Department of Corrections**

**Component:** Electronic Monitoring (2431)

Revenue Type (OMB Fund Code) Revenue Source	Component	Comment	FY2023 Actuals	FY2024 Management Plan	FY2025 Governor
<b>5005 GF/Prgm (1005 GF/Prgm)</b>			<b>712.9</b>	<b>268.9</b>	<b>655.7</b>
5117 Program Receipts Public Protection - Charges for Services		Prisoner fees for electronic monitoring services for adult offenders classified as community custody per statutes: 22 AAC 05.620(a) and AS 33.30.065(d).	712.9	268.9	655.7

**Inter-Agency Services (1682)**  
**Department of Corrections**

**Component:** Electronic Monitoring (2431)

	FY2023 Actuals	FY2024 Management Plan	FY2025 Governor
<b>Component Totals</b>	<b>83.0</b>	<b>73.0</b>	<b>76.5</b>
With Department of Administration	58.8	48.2	48.2
With Department of Transportation and Public Facilities	23.9	24.8	28.3
With Department of Public Safety	0.3	0.0	0.0

Object Class	Servicing Agency	Explanation	FY2023 Actuals	FY2024 Management Plan	FY2025 Governor
3017	Inter-Agency Information Technology Non-Telecommunications	Admin - Department-wide Office of Information Technology (OIT) Core Services, OIT Server Hosting & Storage, OIT Licenses for Adobe, Microsoft and SQL rates charges.	39.0	27.1	27.1
3018	Inter-Agency Information Technology Telecommunications	Admin - Department-wide Office of Information Technology (OIT) Telephone charges.	3.1	4.2	4.2
3022	Inter-Agency Human Resources	Admin - Department-wide Human Resource service charges.	14.0	14.8	14.8
3023	Inter-Agency Building Leases	Trans - Department-wide Office lease space charges.	6.6	3.1	6.6
3027	Inter-Agency Financial	Admin - Department-wide Integrated Resource Information System (IRIS) Financial, IRIS Human Resource Management (HRM)/Payroll, Alaska Data Enterprise Reporting (ALDER) charges.	2.5	1.9	1.9
3028	Inter-Agency Americans with Disabilities Act Compliance	Admin - Department-wide Americans with Disabilities Act (ADA) compliance charges.	0.2	0.2	0.2
3035	Inter-Agency Other Equipment/Machinery	PubSaf - Department-wide Other equipment and machinery services.	0.3	0.0	0.0
3037	State Equipment Fleet	Trans - Department-wide State Equipment Fleet (SEF) charges.	17.3	21.7	21.7

**Personal Services Expenditure Detail**  
**Department of Corrections**

**Scenario:** FY2025 Governor (20959)  
**Component:** Electronic Monitoring (2431)  
**RDU:** Electronic Monitoring (696)

PCN	Job Class Title	Time Status	Retire Code	Barg Unit	Location	Salary Sched	Range / Step	Comp Months	Split / Count	Annual Salaries	COLA	Premium Pay	Annual Benefits	Total Costs	UGF Amount
20-4158	Adult Probation Officer 3	FT	P	SS	Fairbanks	503	20A / B	12.0		81,078	0	0	56,481	137,559	137,559
20-4410	Adult Probation Officer 3	FT	P	SS	Anchorage	500	20A / B	12.0		78,707	0	0	55,503	134,210	134,210
20-4432	Adult Probation Officer 1	FT	P	GP	Juneau	105	15A / B	12.0		56,433	3,985	0	42,338	102,756	102,756
20-4453	Adult Probation Officer 2b	FT	P	GP	Anchorage	100	18D / E	12.0		71,231	5,030	0	48,439	124,700	124,700
20-4466	Adult Probation Officer 2b	FT	P	GP	Anchorage	100	18P	12.0		99,119	6,999	0	59,937	166,055	166,055
20-4467	Adult Probation Officer 2b	FT	P	GP	Palmer	100	18C / D	12.0		69,332	4,896	0	47,656	121,884	121,884
20-4468	Criminal Justice Technician 1	FT	A	GP	Juneau	205	12B / C	12.0		47,307	3,341	0	38,575	89,223	89,223
20-4469	Criminal Justice Technician 2	FT	A	GP	Palmer	100	14A / B	12.0		50,135	3,540	0	39,741	93,416	93,416
20-5251	Criminal Justice Technician 1	FT	A	GP	Fairbanks	203	12C / D	12.0		46,675	3,296	0	38,315	88,286	88,286
20-6774	Criminal Justice Technician 1	FT	A	GP	Anchorage	100	12C / D	12.0		46,441	3,279	0	38,218	87,938	87,938
20-6865	Ppp Admin 1	FT	P	SS	Anchorage	100	21C / D	12.0		88,180	0	0	59,409	147,589	147,589
20-7205	Adult Probation Officer 2b	FT	P	GP	Anchorage	100	18D / E	12.0		71,478	5,047	0	48,541	125,066	62,533
20-7209	Adult Probation Officer 2b	FT	P	GP	Anchorage	100	18G	12.0		78,605	5,551	0	51,479	135,635	67,818
20-7210	Adult Probation Officer 2b	FT	P	GP	Anchorage	100	18D / E	12.0		71,345	5,038	0	48,486	124,869	62,435
20-7215	Office Assistant 3	FT	A	GP	Anchorage	100	11F / G	12.0		47,599	3,361	0	38,696	89,656	44,828

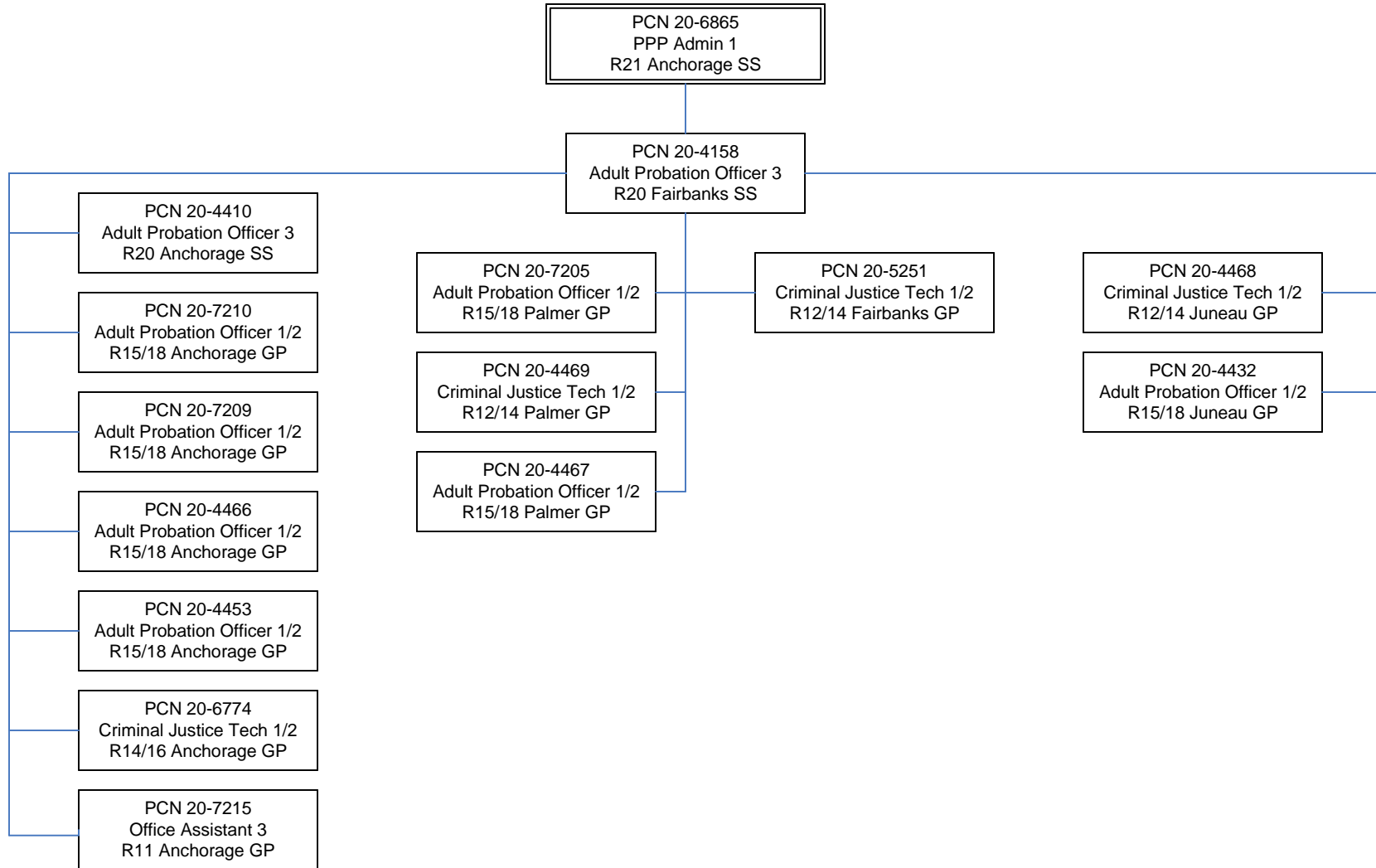
													<b>Total Salary Costs:</b>	1,003,665
													<b>Total COLA:</b>	53,363
													<b>Total Premium Pay:</b>	0
													<b>Total Benefits:</b>	711,814
													<b>Total Pre-Vacancy:</b>	1,768,842
													<b>Minus Vacancy Adjustment of 3.52%:</b>	(62,342)
													<b>Total Post-Vacancy:</b>	1,706,500
													<b>Plus Lump Sum Premium Pay:</b>	0
													<b>Personal Services Line 100:</b>	1,706,500

PCN Funding Sources:	Pre-Vacancy	Post-Vacancy	Percent
1004 Unrestricted General Fund Receipts	1,531,229	1,477,262	86.57%
1005 General Fund/Program Receipts	237,613	229,238	13.43%
<b>Total PCN Funding:</b>	<b>1,768,842</b>	<b>1,706,500</b>	<b>100.00%</b>

Note: If a position is split, an asterisk (\*) will appear in the Split/Count column. If the split position is also counted in the component, two asterisks (\*\*) will appear in this column. [No valid job title] appearing in the Job Class Title indicates that the PCN has an invalid class code or invalid range for the class code effective date of this scenario.



*Department of Corrections*  
**Electronic Monitoring**  
*FY 2025 Organizational Structure*



*Department of Corrections*  
**Facility Capital Improvement Unit**  
*FY 2025 Organizational Structure*

