

State of Alaska
FY2025 Governor's Operating Budget

Department of Family and Community Services
Front Line Social Workers
Component Budget Summary

Component: Front Line Social Workers

Contribution to Department's Mission

Provide direct services to carry out the legal mandates of the Department in response to and for the prevention of child maltreatment.

Core Services

- Deliver child protective services: investigate protective services reports; crisis intervention; assess families for present and impending danger to children; assess the risk of future harm in families in the absence of intervention; and assess family strengths and needs.
- Develop case plans; assess progress toward achieving case plan goals; initiate legal action to protect children; monitor the implementation of treatment plans; coordinate services.
- Arrange out-of-home care, when appropriate and necessary, in the least restrictive setting; determine when children can be safely returned to their own homes; and arrange alternative permanent placement for children when a return home is not possible.

Major Component Accomplishments in 2023

The Office of Children's Services (OCS) continues to identify recruitment and retention of front-line staff as an agency priority. Strategies include the implementation of alternate work week letter of agreements to increase staffing levels in remote areas impacted by staffing challenges. The agreements provide for staff to work "one week on, one week off" with assigned duty stations in Anchorage, Wasilla, or Fairbanks where the candidate pools are higher. Staff travel to outlying offices during their "one week on" rotation. Another strategy involves multiple location recruitments that provide for a broader reach of applicants. Recruitment and retention of frontline supervisors has benefited from a more flexible duty station option resulting in larger pools of qualified applicants and more successful hires. Supervisors travel to their field offices and provide distance supervision via technology when not on-site.

The Mentor Program for front line staff was fully implemented. The primary program goal is to develop competencies in new staff as they transition from the classroom into the field. Mentoring continues to be a highlight for front line staff in their first six months of employment.

OCS launched a Strengthening Investigations and Assessment pilot project in FY2021 in Wasilla, Anchorage, and Fairbanks. The pilot provides for efficiencies including timely documentation and supervisor oversight. Evaluation of the pilot demonstrating positive outcomes and efficiencies supported scaling out the pilot to several more field offices during FY2023. The model has demonstrated a large reduction in the backlog of open investigations.

The division focused on "essential services" in all areas of front-line practice where specific activities are tracked and monitored for better outcomes to children and families.

OCS held a Leadership Summit in April 2023 to bring together over 100 statewide supervisors, managers, and leaders to reengage and focus on strategies to serve families, prepare for Round 4 of the Child and Families Services Review (CFSR) and improve employee retention.

Key Component Challenges

Workforce recruitment and retention continues to be an ongoing challenge for OCS. The agency is experiencing a turnover rate of 46.8 percent among case carrying staff and a rate of 45 percent among all staff. Many exiting staff indicate their top reasons for leaving are workload, lack of competitive salaries, personal safety, and the difficult and traumatic work.

Employee safety continues to be a top concern for OCS. The staff are threatened with bodily harm and are sometimes physically assaulted by clients. Efforts have been made to improve the physical safety of each field office to include installing secure doors, camera and security guards in hub offices. In addition, organizational procedures were developed to respond to violent threats and acts toward staff.

The OCS workforce also continues to be challenged with the lack of appropriate technology resources to do the job effectively and efficiently. Other states' child welfare programs are vastly more technologically advanced with the use of mobile devices for case management as well as increased connectivity for children, families, foster parents, legal parties, Tribal partners, and other stakeholders.

Alaska participated in a third Child and Family Services Review in spring 2017. After over two years of negotiation, Alaska's federally mandated Performance Improvement Plan (PIP) was approved in June 2019. The PIP has been in place for two years and requires extensive efforts from all levels of the agency with quarterly progress updates to the Federal Children's Bureau to demonstrate practice improvement activities. Due to the challenges of COVID-19 on practice implications and implementing strategies in the PIP, OCS negotiated a year extension of the plan that was approved in 2021. The division will need to continue active efforts in implementing strategies contained within the plan and undergo Federal case review monitoring until December of 2023.

Significant Changes in Results to be Delivered in FY2025

The Office of Children's Services (OCS) anticipates improved service delivery related to safety assessment, service planning, and permanency because of the efforts underway to comply with the PIP. Agency efforts towards recruitment and retention of case carrying staff will positively impact the effectiveness of service delivery.

Statutory and Regulatory Authority

AS 18.05.010-070 Administration of Public Health and Related Laws
AS 47.05.010 Duties of Department
AS 47.10 Children in Need of Aid
AS 47.32 Centralized Licensing and Related Administrative Procedures Personal

Responsibility and Work Opportunity Reconciliation Act of 1996
Titles IV-A, IV-B, IV-E and XIX of the Social Security Act

Contact Information
Contact: Marian Sweet, Administrative Services Director Phone: (907) 465-1630 E-mail: marian.sweet@alaska.gov

Front Line Social Workers Personal Services Information					
Authorized Positions			Personal Services Costs		
	FY2024 Management Plan	FY2025 Governor			
Full-time	545	545	Annual Salaries		36,389,228
Part-time	0	0	COLA		2,018,279
Nonpermanent	6	6	Premium Pay		1,067,576
			Annual Benefits		25,569,565
			<i>Less 7.00% Vacancy Factor</i>		(4,553,125)
			Lump Sum Premium Pay		0
Totals	551	551	Total Personal Services		60,491,523

Position Classification Summary					
Job Class Title	Anchorage	Fairbanks	Juneau	Others	Total
Accounting Technician 1	1	4	0	7	12
Administrative Assistant 2	3	1	1	5	10
Administrative Officer 1	0	0	1	1	2
Administrative Officer 2	1	1	0	1	3
C/C Lic Spec 1	10	4	1	12	27
C/C Lic Spec 2	2	2	0	3	7
C/C Lic Spec 3	1	1	0	0	2
Eligibility Technician 2	5	0	2	5	12
Eligibility Technician 4	1	0	0	1	2
Mental Health Clinician 3	1	0	0	0	1
Mental Health Clinician 4	1	0	0	0	1
Nurse Consultant 1	1	1	0	1	3
Nurse Consultant 2	1	0	0	0	1
Office Assistant 1	8	4	1	2	15
Office Assistant 2	9	1	1	3	14
Office Assistant 3	2	0	0	1	3
Office Assistant 4	0	1	0	0	1
Pro Svcs Sp 1	19	17	2	25	63
Pro Svcs Sp 2	68	15	11	43	137
Pro Svcs Sp 3	34	8	4	29	75
Pro Svcs Sp 4	23	8	4	21	56
Program Coordinator 2	1	0	0	0	1
Project Assistant	1	0	0	0	1
Protective Services Manager 1	4	2	1	3	10
Protective Services Manager 2	2	1	1	1	5
Research Analyst 3	1	0	0	0	1
Social Services Associate	26	10	4	37	77
Ss Prog Coord	8	0	0	0	8
Ss Prog Ofc	1	0	0	0	1
Totals	235	81	34	201	551

Component Detail All Funds
Department of Family and Community Services

Component: Front Line Social Workers (3318)
RDU: Children's Services (486)

Non-Formula Component

	FY2023 Actuals	FY2024 Enrolled	FY2024 Authorized	FY2024 Management Plan	FY2025 Governor Adjusted Base	FY2025 Governor	FY2024 Management Plan vs FY2025 Governor		
1000 Personal Services	54,626.2	60,443.2	60,443.2	56,553.1	60,491.5	60,491.5	3,938.4	7.0%	
2000 Travel	3,306.5	2,071.3	2,071.3	3,607.0	3,607.0	3,607.0	0.0	0.0%	
3000 Services	14,669.8	12,647.2	12,647.2	15,001.6	13,620.9	13,620.9	-1,380.7	-9.2%	
4000 Commodities	1,429.0	454.1	454.1	454.1	454.1	454.1	0.0	0.0%	
5000 Capital Outlay	0.0	0.0	0.0	0.0	0.0	0.0	0.0	0.0%	
7000 Grants, Benefits	0.0	0.0	0.0	0.0	0.0	0.0	0.0	0.0%	
8000 Miscellaneous	0.0	0.0	0.0	0.0	0.0	0.0	0.0	0.0%	
Totals	74,031.5	75,615.8	75,615.8	75,615.8	78,173.5	78,173.5	2,557.7	3.4%	
Fund Sources:									
1002 Fed Rcpts (Fed)	30,640.0	29,835.0	29,835.0	29,835.0	30,830.2	30,830.2	995.2	3.3%	
1003 G/F Match (UGF)	689.8	43,841.1	43,841.1	43,841.1	45,397.1	45,397.1	1,556.0	3.5%	
1004 Gen Fund (UGF)	42,482.6	1,686.9	1,686.9	1,686.9	1,688.4	1,688.4	1.5	0.1%	
1007 I/A Rcpts (Other)	32.3	30.8	30.8	30.8	32.2	32.2	1.4	4.5%	
1037 GF/MH (UGF)	148.5	148.5	148.5	148.5	148.5	148.5	0.0	0.0%	
1108 Stat Desig (Other)	38.3	73.5	73.5	73.5	77.1	77.1	3.6	4.9%	
Unrestricted General (UGF)	43,320.9	45,676.5	45,676.5	45,676.5	47,234.0	47,234.0	1,557.5	3.4%	
Designated General (DGF)	0.0	0.0	0.0	0.0	0.0	0.0	0.0	0.0%	
Other Funds	70.6	104.3	104.3	104.3	109.3	109.3	5.0	4.8%	
Federal Funds	30,640.0	29,835.0	29,835.0	29,835.0	30,830.2	30,830.2	995.2	3.3%	
Positions:									
Permanent Full Time	548	548	548	545	545	545	0	0.0%	
Permanent Part Time	0	0	0	0	0	0	0	0.0%	
Non Permanent	6	6	6	6	6	6	0	0.0%	

Change Record Detail - Multiple Scenarios with Descriptions
Department of Family and Community Services

Component: Front Line Social Workers (3318)
RDU: Children's Services (486)

Scenario/Change Record Title	Trans Type	Totals	Personal Services	Travel	Services	Commodities	Capital Outlay	Grants, Benefits	Miscellaneous	Positions		NP
										PFT	PPT	
***** Changes From FY2024 Enrolled To FY2024 Authorized *****												
FY2024 Enrolled	Enrolled	75,615.8	60,443.2	2,071.3	12,647.2	454.1	0.0	0.0	0.0	548	0	6
1002 Fed Rcpts		29,835.0										
1003 G/F Match		43,841.1										
1004 Gen Fund		1,686.9										
1007 I/A Rcpts		30.8										
1037 GF/MH		148.5										
1108 Stat Desig		73.5										
Subtotal		75,615.8	60,443.2	2,071.3	12,647.2	454.1	0.0	0.0	0.0	548	0	6
***** Changes From FY2024 Authorized To FY2024 Management Plan *****												
Align Authority with Anticipated Expenditures	LIT	0.0	-3,890.1	1,535.7	2,354.4	0.0	0.0	0.0	0.0	0	0	0
Transfer authority from personal services to travel and services to align with anticipated expenditures. The remaining personal services authority is sufficient to cover anticipated expenditures.												
Transfer Three Human Resource Consultants from the Office of Children's Services	PosAdj	0.0	0.0	0.0	0.0	0.0	0.0	0.0	0.0	-3	0	0
Transfer three permanent, full-time positions from Front Line Social Workers to the Talent Acquisition Team for a Human Resources Demonstration Project.												
Full-time Human Resource Consultant 1 (06-3861), range 16, located in Juneau												
Full-time Human Resource Consultant 1 (06-4542), range 16, located in Juneau												
Full-time Human Resource Consultant 1 (06-9317), range 16, located in Juneau												
Subtotal		75,615.8	56,553.1	3,607.0	15,001.6	454.1	0.0	0.0	0.0	545	0	6
***** Changes From FY2024 Management Plan To FY2025 Governor Adjusted Base *****												
FY2025 Salary, Health Insurance, and PERS Rate Adjustments	SalAdj	2,557.7	2,557.7	0.0	0.0	0.0	0.0	0.0	0.0	0	0	0
1002 Fed Rcpts		995.2										
1003 G/F Match		1,556.0										
1004 Gen Fund		1.5										
1007 I/A Rcpts		1.4										
1108 Stat Desig		3.6										
FY2025 Salary, Health Insurance, and PERS Rate Adjustments: \$2,557.7												

Change Record Detail - Multiple Scenarios with Descriptions
Department of Family and Community Services

Component: Front Line Social Workers (3318)
RDU: Children's Services (486)

Scenario/Change Record Title	Trans Type	Totals	Personal Services	Travel	Services	Commodities	Capital Outlay	Grants, Benefits	Miscellaneous	Positions		NP
										PFT	PPT	
FY2025 AlaskaCare insurance from \$1,793 to \$1,908 per member per month: \$117.5												
FY2025 GGU health insurance from \$1,573.50 to \$1,579.50 per member per month: \$28.2												
FY2025 GGU 5% Cost of Living Adjustment: \$1,823.0												
FY2025 PERS Rate Adjustment from 25.10% to 26.76%: \$589.0												
Align Authority with Anticipated Expenditures												
LIT		0.0	1,380.7	0.0	-1,380.7	0.0	0.0	0.0	0.0	0	0	0
Align authority from services to cover anticipated personal services. The remaining services authority is sufficient to cover anticipated expenditures.												
Subtotal		78,173.5	60,491.5	3,607.0	13,620.9	454.1	0.0	0.0	0.0	545	0	6
***** Changes From FY2025 Governor Adjusted Base To FY2025 Governor *****												
Totals		78,173.5	60,491.5	3,607.0	13,620.9	454.1	0.0	0.0	0.0	545	0	6

Line Item Detail (1676)
Department of Family and Community Services
Travel

Component: Front Line Social Workers (3318)

Line Number	Line Name		FY2023 Actuals	FY2024 Management Plan	FY2025 Governor
2000	Travel		3,306.5	3,607.0	3,607.0
Object Class	Servicing Agency	Explanation	FY2023 Actuals	FY2024 Management Plan	FY2025 Governor
2000 Travel Detail Totals			3,306.5	3,607.0	3,607.0
2000	In-State Employee Travel	Travel costs for administrative purposes, departmental meetings, site visits, quality assurance, training, privately owned vehicles, per diem, supervisory visits to offices within the regions, development of child protection resources and case related employee travel.	2,873.3	3,411.0	3,411.0
2001	In-State Non-Employee Travel	Nonemployee portion of instate travels costs including airfare, lodging, car rental and meals	1.1	10.0	10.0
2002	Out of State Employee Travel	Out of state travel costs to support the statewide implementation of the Family-to-Family services and case related employee travel.	51.2	85.0	85.0
2005	Moving Costs	Moving and re-location costs. Includes the costs associated with moving household goods, travel, temporary lodging, meals, and incidentals.	30.9	100.0	100.0
2006	Other Travel Costs	Cash advance fee	350.0	1.0	1.0

Line Item Detail (1676)
Department of Family and Community Services
Services

Component: Front Line Social Workers (3318)

Line Number	Line Name		FY2023 Actuals	FY2024 Management Plan	FY2025 Governor
3000	Services		14,669.8	15,001.6	13,620.9
Object Class	Servicing Agency	Explanation	FY2023 Actuals	FY2024 Management Plan	FY2025 Governor
3000 Services Detail Totals			14,669.8	15,001.6	13,620.9
3000	Education Services	Conference registration fees, membership dues, employee tuition and other employee training costs.	5.2	3.0	3.0
3001	Financial Services	Financial Services	7.0	0.0	0.0
3002	Legal and Judicial Services	Fees paid for testimony in child protective cases from witnesses such as medical personnel, psychiatrists, and other outside parties.	1.8	6.0	6.0
3003	Information Technology	Software licensing fees and software maintenance costs.	1,119.2	60.0	60.0
3003	Information Technology	Admin - Department-wide Reimbursable Services Agreement: Department of Administration, Office of Information Technology	0.0	2,233.0	1,298.0
3004	Telecommunications	Communication costs to outside vendors for long distance charges, teleconference fees, data circuits, television, cellular and other wireless phone costs.	666.4	600.0	600.0
3005	Health Services	Services related to Americans with Disabilities Act compliance for workers and family contact spaces within field offices.	0.0	8.0	8.0
3006	Delivery Services	Delivery, freight, postage, and courier costs.	97.8	75.0	75.0
3007	Advertising and Promotions	Cost of advertising for recruitment purposes and to meet legal	1.9	5.0	5.0

Line Item Detail (1676)
Department of Family and Community Services
Services

Component: Front Line Social Workers (3318)

Object Class	Servicing Agency	Explanation	FY2023 Actuals	FY2024 Management Plan	FY2025 Governor
3000 Services Detail Totals			14,669.8	15,001.6	13,620.9
3008	Utilities	requirements. Waste disposal costs, recycling, and other utility costs.	17.3	250.0	250.0
3009	Structure/Infrastructure/Land	Miscellaneous services: Janitorial and caretaker services; miscellaneous repairs and maintenance; room, space and structure rentals for meetings and document storage.	453.9	336.1	336.1
3010	Equipment/Machinery	Service contracts for copiers, postage machines.	32.0	50.0	50.0
3011	Other Services	Cost to maintain the Citizens Review Panel and enable the effective evaluation of Office of Children's Services' discharge of Child Protection Services and responsibilities in accordance with child protection standards. Contracts for armed security guards for the regional offices that include Juneau, Anchorage, Wasilla, Fairbanks, and Kenai. Transportation services to maintain school consistency in Fairbanks, Mat-Su, Anchorage and Kenai as required by the Every Student Succeeds Act. Printing and mailing services for placement of notices. Maintenance and operations for ORCA.	3,099.0	3,221.0	2,866.6

Line Item Detail (1676)
Department of Family and Community Services
Services

Component: Front Line Social Workers (3318)

Object Class		Servicing Agency	Explanation	FY2023 Actuals	FY2024 Management Plan	FY2025 Governor
3000 Services Detail Totals				14,669.8	15,001.6	13,620.9
3017	Inter-Agency Information Technology Non-Telecommunications	Admin - Department-wide	Reimbursable Services Agreement: Department of Administration, Computer Services, Telecom, and Network Services	2,036.1	500.0	1,408.7
3017	Inter-Agency Information Technology Non-Telecommunications	FCS - Commissioner's Office (3304)	Reimbursable Services Agreement: Department of Health, Commissioner's Office	0.0	42.0	42.0
3017	Inter-Agency Information Technology Non-Telecommunications	FCS - Front Line Social Workers (3318)	Reimbursable Services Agreement: OMB Admin Order 302	0.0	0.0	0.0
3017	Inter-Agency Information Technology Non-Telecommunications	FCS - Information Technology Services (3328)	Reimbursable Services Agreement: Department of Health for Business Applications	0.0	700.0	700.0
3017	Inter-Agency Information Technology Non-Telecommunications	FCS - Public Affairs (3329)	Reimbursable Services Agreement: Department of Health for Public Affairs	0.0	60.0	60.0
3017	Inter-Agency Information Technology Non-Telecommunications	FCS - Commissioner's Office (3304)	Alaska eHealth Network information exchange	0.0	25.0	25.0
3017	Inter-Agency Information Technology Non-Telecommunications	FCS - Information Technology Services (3328)	Reimbursable Services Agreement: Department of Health for Online Resource for the Children of Alaska Maintenance and Operations.	0.0	440.6	440.6
3018	Inter-Agency Information Technology Telecommunications	Admin - Department-wide	Inter-Agency Information Technology Telecommunications	139.6	0.0	0.0
3021	Inter-Agency Mail	Admin - Department-wide	Reimbursable Services Agreement: Department of Administration. Central mail and postage services.	47.9	42.0	42.0
3022	Inter-Agency Human Resources	Admin - Department-wide	Reimbursable Services Agreement: Department of Administration, Centralized Admin Services Human Resources charges	34.2	290.0	290.0
3023	Inter-Agency Building Leases	Admin - Department-wide	Reimbursable Services Agreement: Building lease Costs: Petersburg Lease 1673,	0.0	3,800.0	2,800.0

Line Item Detail (1676)
Department of Family and Community Services
Services

Component: Front Line Social Workers (3318)

Object Class	Servicing Agency	Explanation	FY2023 Actuals	FY2024 Management Plan	FY2025 Governor
3000 Services Detail Totals			14,669.8	15,001.6	13,620.9
		Dillingham Lease 2209 Bethel Lease 2688, Aniak Lease 2287, Delta Junction Lease 2350, Kotzebue Lease 2649, Homer Lease 2465, Utqiagvik Lease 2476, St. Mary's Lease 2484, Sitka Lease 2495, Wasilla Lease 2524, Fairbanks Lease 2531, Craig Lease 2557, Anchorage Lease 2587, Gakona Lease 2640 Juneau Southeast Office, Lease 2647 Lease 8003-2, Griffin Building, Kodiak, Lease 8010, Kenai Combined Facility, Kenai, Lease 8057 Nome State Office Building, Wasilla, A Children's Place			
3023	Inter-Agency Building Leases	Trans - Department-wide	Reimbursable Services Agreement: Lease 8003 3,440.1	142.0	142.0
3024	Inter-Agency Legal	Law - Department-wide	Reimbursable Services Agreement: Regulations Review and Direct Charge 543.8	400.0	400.0
3025	Inter-Agency Auditing	FCS - Administrative Services (3305)	Reimbursable Services Agreement: Audit Support Services 0.0	9.0	9.0
3026	Inter-Agency Insurance	Admin - Department-wide	Reimbursable Services Agreement: Department of Administration, Division of Risk Management, Insurance. 58.7	75.0	75.0
3027	Inter-Agency Financial	Admin - Department-wide	Reimbursable Services Agreement: 65.6	150.0	150.0

Line Item Detail (1676)
Department of Family and Community Services
Services

Component: Front Line Social Workers (3318)

Object Class	Servicing Agency	Explanation	FY2023 Actuals	FY2024 Management Plan	FY2025 Governor
3000 Services Detail Totals			14,669.8	15,001.6	13,620.9
		Department of Administration, Division of Finance for Integrated Resource Information System and Alaska Data Enterprise Reporting			
3028	Inter-Agency Americans with Disabilities Act Compliance	Admin - Department-wide Reimbursable Services Agreement: Department of Administration Centralized Admin Services Americans with Disabilities Act charges to Department of Health and Social Services	10.5	4.5	4.5
3029	Inter-Agency Education/Training	Health - Department-wide Inter-Agency Education/Training	20.0	0.0	0.0
3032	Inter-Agency Health	Inter-Agency Health	45.0	0.0	0.0
3032	Inter-Agency Health	FCS - Administrative Services (3305) Reimbursable Services Agreement: Department of Health, Finance and Management Services department-wide services	0.0	200.0	200.0
3032	Inter-Agency Health	H&SS - Department-wide Reimbursable Services Agreement: Department of Health, Health Care Services, Medical Authority services.	0.0	145.0	145.0
		Reimbursable Services Agreement: Department of Health, Division of Health Care Services for fingerprinting and background check services for resource families.			
3036	Inter-Agency Safety	Health - Department-wide Inter-Agency Safety	125.9	0.0	0.0
3036	Inter-Agency Safety	PubSaf - Department-wide Reimbursable Services Agreement: Department of Public Safety, Background Check and Criminal History record checks for newly hired Office of Children's Services Protective Services Specialists	4.7	7.0	7.0
3037	State Equipment Fleet	State Equipment Fleet	0.1	0.0	0.0

Line Item Detail (1676)
Department of Family and Community Services
Services

Component: Front Line Social Workers (3318)

Object Class		Servicing Agency	Explanation	FY2023 Actuals	FY2024 Management Plan	FY2025 Governor
3000 Services Detail Totals				14,669.8	15,001.6	13,620.9
3037	State Equipment Fleet	Trans - Department-wide	State Equipment Fleet Service and Fuel Charges	485.3	413.0	413.0
3038	Inter-Agency Management/Consulting	Admin - Department-wide	Reimbursable Services Agreement: Department of Administration, Shared Services, Computer Refresh	143.6	160.0	160.0
3038	Inter-Agency Management/Consulting	FCS - Administrative Services (3305)	Inter-agency management/consulting services.	135.8	0.0	0.0
3038	Inter-Agency Management/Consulting	FCS - Commissioner's Office (3304)	Inter-agency management/consulting services.	61.8	0.0	0.0
3038	Inter-Agency Management/Consulting	FCS - Information Technology Services (3328)	Reimbursable Services Agreement: Finance and Management Services for Microsoft and Adobe	1,594.6	42.0	42.0
3038	Inter-Agency Management/Consulting	FCS - Public Affairs (3329)	Inter-agency management/consulting services.	130.5	0.0	0.0
3038	Inter-Agency Management/Consulting	Gov - Department-wide	Inter-agency management/consulting services.	44.5	0.0	0.0
3038	Inter-Agency Management/Consulting	Labor - Department-wide	Reimbursable Services Agreement: Department of Labor. Population estimates demographic support.	0.0	7.4	7.4
3038	Inter-Agency Management/Consulting	Admin - Department-wide	Reimbursable Services Agreement: Department of Administration for Information Technology customer services	0.0	500.0	500.0

Line Item Detail (1676)
Department of Family and Community Services
Commodities

Component: Front Line Social Workers (3318)

Line Number	Line Name		FY2023 Actuals	FY2024 Management Plan	FY2025 Governor
4000	Commodities		1,429.0	454.1	454.1
Object Class	Servicing Agency	Explanation	FY2023 Actuals	FY2024 Management Plan	FY2025 Governor
4000 Commodities Detail Totals			1,429.0	454.1	454.1
4000	Business	General office supplies necessary to support programs and activities. Includes educational materials, duplicating, copying, and information technology supplies. Also includes office and computer equipment, furniture and tools with a cost or value of less than \$5000	1,313.5	454.1	454.1
4002	Household/Institutional	General office supplies necessary to support programs and activities.	32.4	0.0	0.0
4004	Safety	Safety	43.6	0.0	0.0
4015	Parts and Supplies	Parts and Supplies	0.4	0.0	0.0
4019	Small Tools/Minor Equipment	Small Tools/Minor	0.3	0.0	0.0
4020	Equipment Fuel	Fuel for equipment	38.8	0.0	0.0

Revenue Detail (1681)
Department of Family and Community Services

Component: Front Line Social Workers (3318)

Revenue Type (OMB Fund Code) Revenue Source	Component	Comment	FY2023 Actuals	FY2024 Management Plan	FY2025 Governor
5002 Fed Rcpts (1002 Fed Rcpts)			30,640.0	29,835.0	30,830.2
5019 Federal - Miscellaneous Grants		Title IV-E, Social Services Block Grant, and other federal funding sources determined by the Public Assistance Cost Allocation Plan Title IV-E, Social Services Block Grant, and other federal funding sources determined by the Public Assistance Cost Allocation Plan	30,640.0	29,835.0	30,830.2
5007 I/A Rcpts (1007 I/A Rcpts)			32.3	30.8	32.2
5301 Inter-Agency Receipts	Courts - Department-wide	Interagency receipt authority for services provided on behalf of other state agencies. Interagency receipt authority for services provided on behalf of other state agencies.	12.3	30.8	32.2
5301 Inter-Agency Receipts	Health - Department-wide	Inter-Agency Receipts	20.0	0.0	0.0
5108 Stat Desig (1108 Stat Desig)			38.3	73.5	77.1
5204 Statutory Dsgntd Prgm Rcpts Hlth & Hmn Svcs - Chrgs for Svcs		Statutory Designated Program Receipts	38.3	0.0	0.0
5206 Statutory Designated Program Receipts - Contracts		The City and Borough of Wrangell requested an Office of Children's Services position to help carry the case work. The City and Borough of Wrangell requested an Office of Children's Services position to help carry the case work.	0.0	73.5	77.1
6003 G/F Match (1003 G/F Match)			0.1	0.0	0.0
6102 Match - Prior Year Reimbursement Recovery		Match - Prior Year	0.1	0.0	0.0

Revenue Detail (1681)
Department of Family and Community Services

Component: Front Line Social Workers (3318)

Revenue Type (OMB Fund Code)	Component	Comment	FY2023 Actuals	FY2024 Management Plan	FY2025 Governor
6004 Gen Fund (1004 Gen Fund)			0.1	0.0	0.0
6046 General Fund - Prior Year Reimbursement Recovery		General Fund Prior Year	0.1	0.0	0.0

Inter-Agency Services (1682)
Department of Family and Community Services

Component: Front Line Social Workers (3318)

	FY2023 Actuals	FY2024 Management Plan	FY2025 Governor
Component Totals	9,123.2	10,387.5	9,361.2
With Department of Administration	2,536.2	7,754.5	6,728.2
With Department of Family and Community Services	1,922.7	1,518.6	1,518.6
With Department of Transportation and Public Facilities	3,925.4	555.0	555.0
With Department of Law	543.8	400.0	400.0
With Department of Health	145.9	0.0	0.0
With Department of Health & Social Services	0.0	145.0	145.0
With Department of Public Safety	4.7	7.0	7.0
With Office of the Governor	44.5	0.0	0.0
With Department of Labor and Workforce Development	0.0	7.4	7.4

Object Class	Servicing Agency	Explanation	FY2023 Actuals	FY2024 Management Plan	FY2025 Governor
3003 Information Technology	Admin - Department-wide	Reimbursable Services Agreement: Department of Administration, Office of Information Technology	0.0	2,233.0	1,298.0
3017 Inter-Agency Information Technology Non-Telecommunications	Admin - Department-wide	Reimbursable Services Agreement: Department of Administration, Computer Services, Telecom, and Network Services	2,036.1	500.0	1,408.7
3017 Inter-Agency Information Technology Non-Telecommunications	FCS - Commissioner's Office (3304)	Reimbursable Services Agreement: Department of Health, Commissioner's Office	0.0	42.0	42.0
3017 Inter-Agency Information Technology Non-Telecommunications	FCS - Information Technology Services (3328)	Reimbursable Services Agreement: Department of Health for Business Applications	0.0	700.0	700.0
3017 Inter-Agency Information Technology Non-Telecommunications	FCS - Public Affairs (3329)	Reimbursable Services Agreement: Department of Health for Public Affairs	0.0	60.0	60.0
3017 Inter-Agency Information Technology Non-Telecommunications	FCS - Commissioner's Office (3304)	Alaska eHealth Network information exchange	0.0	25.0	25.0

Inter-Agency Services (1682)
Department of Family and Community Services

Component: Front Line Social Workers (3318)

Object Class	Servicing Agency	Explanation	FY2023 Actuals	FY2024 Management Plan	FY2025 Governor	
3017	Inter-Agency Information Technology Non-Telecommunications	FCS - Information Technology Services (3328)	Reimbursable Services Agreement: Department of Health for Online Resource for the Children of Alaska Maintenance and Operations.	0.0	440.6	440.6
3018	Inter-Agency Information Technology Telecommunications	Admin - Department-wide	Inter-Agency Information Technology Telecommunications	139.6	0.0	0.0
3021	Inter-Agency Mail	Admin - Department-wide	Reimbursable Services Agreement: Department of Administration. Central mail and postage services.	47.9	42.0	42.0
3022	Inter-Agency Human Resources	Admin - Department-wide	Reimbursable Services Agreement: Department of Administration, Centralized Admin Services Human Resources charges	34.2	290.0	290.0
3023	Inter-Agency Building Leases	Admin - Department-wide	Reimbursable Services Agreement: Building lease Costs: Petersburg Lease 1673, Dillingham Lease 2209, Bethel Lease 2688, Aniak Lease 2287, Delta Junction Lease 2350, Kotzebue Lease 2649, Homer Lease 2465, Utqiagvik Lease 2476, St. Mary's Lease 2484, Sitka Lease 2495, Wasilla Lease 2524, Fairbanks Lease 2531, Craig Lease 2557, Anchorage Lease 2587, Gakona Lease 2640, Juneau Southeast Office, Lease 2647, Lease 8003-2, Griffin Building, Kodiak, Lease 8010, Kenai Combined Facility, Kenai, Lease 8057 Nome State Office Building,	0.0	3,800.0	2,800.0

Inter-Agency Services (1682)
Department of Family and Community Services

Component: Front Line Social Workers (3318)

Object Class		Servicing Agency	Explanation	FY2023 Actuals	FY2024 Management Plan	FY2025 Governor
			Wasilla, A Children's Place			
3023	Inter-Agency Building Leases	Trans - Department-wide	Reimbursable Services Agreement: Lease 8003	3,440.1	142.0	142.0
3024	Inter-Agency Legal	Law - Department-wide	Reimbursable Services Agreement: Regulations Review and Direct Charge	543.8	400.0	400.0
3025	Inter-Agency Auditing	FCS - Administrative Services (3305)	Reimbursable Services Agreement: Audit Support Services	0.0	9.0	9.0
3026	Inter-Agency Insurance	Admin - Department-wide	Reimbursable Services Agreement: Department of Administration, Division of Risk Management, Insurance.	58.7	75.0	75.0
3027	Inter-Agency Financial	Admin - Department-wide	Reimbursable Services Agreement: Department of Administration, Division of Finance for Integrated Resource Information System and Alaska Data Enterprise Reporting	65.6	150.0	150.0
3028	Inter-Agency Americans with Disabilities Act Compliance	Admin - Department-wide	Reimbursable Services Agreement: Department of Administration Centralized Admin Services Americans with Disabilities Act charges to Department of Health and Social Services	10.5	4.5	4.5
3029	Inter-Agency Education/Training	Health - Department-wide	Inter-Agency Education/Training	20.0	0.0	0.0
3032	Inter-Agency Health	FCS - Administrative Services (3305)	Reimbursable Services Agreement: Department of Health, Finance and Management Services department-wide services	0.0	200.0	200.0
3032	Inter-Agency Health	H&SS - Department-wide	Reimbursable Services Agreement: Department of Health, Health Care Services, Medical Authority services.	0.0	145.0	145.0
			Reimbursable Services Agreement: Department of Health, Division of Health Care Services for fingerprinting and background check			

Inter-Agency Services (1682)
Department of Family and Community Services

Component: Front Line Social Workers (3318)

Object Class		Servicing Agency	Explanation	FY2023 Actuals	FY2024 Management Plan	FY2025 Governor
			services for resource families.			
3036	Inter-Agency Safety	Health - Department-wide	Inter-Agency Safety	125.9	0.0	0.0
3036	Inter-Agency Safety	PubSaf - Department-wide	Reimbursable Services Agreement: Department of Public Safety, Background Check and Criminal History record checks for newly hired Office of Children's Services Protective Services Specialists	4.7	7.0	7.0
3037	State Equipment Fleet	Trans - Department-wide	State Equipment Fleet Service and Fuel Charges	485.3	413.0	413.0
3038	Inter-Agency Management/Consulting	Admin - Department-wide	Reimbursable Services Agreement: Department of Administration, Shared Services, Computer Refresh	143.6	160.0	160.0
3038	Inter-Agency Management/Consulting	FCS - Administrative Services (3305)	Inter-agency management/consulting services.	135.8	0.0	0.0
3038	Inter-Agency Management/Consulting	FCS - Commissioner's Office (3304)	Inter-agency management/consulting services.	61.8	0.0	0.0
3038	Inter-Agency Management/Consulting	FCS - Information Technology Services (3328)	Reimbursable Services Agreement: Finance and Management Services for Microsoft and Adobe	1,594.6	42.0	42.0
3038	Inter-Agency Management/Consulting	FCS - Public Affairs (3329)	Inter-agency management/consulting services.	130.5	0.0	0.0
3038	Inter-Agency Management/Consulting	Gov - Department-wide	Inter-agency management/consulting services.	44.5	0.0	0.0
3038	Inter-Agency Management/Consulting	Labor - Department-wide	Reimbursable Services Agreement: Department of Labor. Population estimates demographic support.	0.0	7.4	7.4
3038	Inter-Agency Management/Consulting	Admin - Department-wide	Reimbursable Services Agreement: Department of Administration for Information Technology customer services	0.0	500.0	500.0

Personal Services Expenditure Detail
Department of Family and Community Services

Scenario: FY2025 Governor (20959)
Component: Front Line Social Workers (3318)
RDU: Children's Services (486)

PCN	Job Class Title	Time Status	Retire Code	Barg Unit	Location	Salary Sched	Range / Step	Comp Months	Split / Count	Annual Salaries	COLA	Premium Pay	Annual Benefits	Total Costs	UGF Amount
06-1351	Research Analyst 3	FT	A	GP	Anchorage	200	18J	12.0		81,081	5,726	0	52,517	139,324	84,988
06-1805	Pro Svcs Sp 3	FT	A	GP	Wasilla	200	19G / J	12.0		83,877	6,602	9,598	57,629	157,706	96,201
06-3012	C/C Lic Spec 1	FT	A	GP	Bethel	250	16G / J	12.0		102,356	7,229	0	61,292	170,877	104,235
06-3014	Protective Services Manager 1	FT	A	SS	Fairbanks	203	21K	12.0		106,434	0	0	66,957	173,391	105,769
06-3015	Protective Services Manager 1	FT	A	SS	Wasilla	200	21K / L	12.0		106,516	0	0	66,990	173,506	105,839
06-3016	Protective Services Manager 1	FT	A	SS	Fairbanks	203	21F	9.0		74,896	0	0	48,184	123,080	75,079
06-3018	Pro Svcs Sp 4	FT	A	SS	Anchorage	200	20D / E	12.0		86,279	0	1,547	59,281	147,107	89,735
06-3019	Pro Svcs Sp 3	FT	A	GP	Anchorage	200	19F / G	12.0		81,242	5,847	1,547	53,221	141,857	86,533
06-3020	Pro Svcs Sp 2	FT	A	GP	Wasilla	200	17B / C	12.0		61,969	4,496	1,697	45,333	113,495	69,232
06-3021	Pro Svcs Sp 2	FT	A	GP	Anchorage	200	17K / L	12.0		79,458	6,249	9,029	55,572	150,308	91,688
06-3022	Pro Svcs Sp 1	FT	A	GP	Anchorage	200	15A / B	12.0		51,736	4,212	7,905	43,673	107,526	65,591
06-3023	Pro Svcs Sp 1	FT	A	GP	Anchorage	200	15B / C	9.0		41,403	3,557	8,956	35,076	88,992	54,285
06-3025	Pro Svcs Sp 2	FT	A	GP	Juneau	205	17C / D	9.0		51,860	3,897	3,318	37,064	96,139	58,645
06-3026	Eligibility Technician 2	FT	A	GP	Anchorage	200	14C / D	12.0		52,589	3,714	0	40,764	97,067	59,211
06-3027	Pro Svcs Sp 2	FT	A	GP	Anchorage	200	17F / G	12.0		71,923	5,253	2,453	49,751	129,380	78,922
06-3029	Pro Svcs Sp 3	FT	A	GP	Ketchikan	200	19B / C	12.0		71,749	5,135	956	49,061	126,901	77,410
06-3030	Social Services Associate	FT	A	GP	Ketchikan	200	12A / B	9.0		32,702	2,310	0	27,793	62,805	38,311
06-3031	Office Assistant 1	FT	A	GP	Juneau	205	8C / D	12.0		38,221	2,753	758	35,149	76,881	46,897
06-3033	Office Assistant 2	FT	A	GP	Anchorage	200	10B / C	9.0		29,146	2,058	0	26,326	57,530	35,093
06-3034	Pro Svcs Sp 2	FT	A	GP	Wasilla	200	17B / C	12.0		61,630	4,353	0	44,493	110,476	67,390
06-3035	Office Assistant 1	FT	A	GP	Anchorage	200	8A / B	12.0		33,521	2,367	0	32,898	68,786	41,960
06-3036	Accounting Technician 1	FT	A	GP	Fairbanks	203	12B / C	12.0		45,662	3,225	0	37,906	86,793	52,944
06-3037	Office Assistant 4	FT	A	SS	Fairbanks	603	12C / D	12.0		48,890	0	0	43,220	92,110	56,187
06-3039	Office Assistant 1	FT	A	GP	Nome	237	8A / B	12.0		46,937	3,315	0	38,432	88,684	54,097
06-3042	Pro Svcs Sp 1	FT	A	GP	Anchorage	200	15B / C	9.0		41,403	2,924	0	31,382	75,709	46,183
06-3043	Pro Svcs Sp 2	FT	A	GP	Anchorage	200	17A / B	12.0		59,254	4,185	0	43,513	106,952	65,241
06-3044	Pro Svcs Sp 2	FT	A	GP	Anchorage	200	17B / C	12.0		63,609	5,200	10,024	49,444	128,277	78,249
06-3045	Pro Svcs Sp 2	FT	A	GP	Anchorage	200	17K	12.0		78,254	5,577	714	51,645	136,190	83,076
06-3046	Pro Svcs Sp 2	FT	A	GP	Wasilla	200	17A / B	12.0		59,852	4,709	6,819	46,572	117,952	71,951
06-3047	Pro Svcs Sp 4	FT	A	SS	Fairbanks	203	20B / C	12.0		83,920	0	0	57,670	141,590	86,370
06-3048	Pro Svcs Sp 2	FT	A	GP	Juneau	205	17A / B	9.0		48,306	3,412	0	34,229	85,947	52,428
06-3057	Pro Svcs Sp 3	FT	A	GP	Anchorage	200	19C / D	12.0		75,485	5,402	1,000	50,621	132,508	80,830
06-3058	Social Services Associate	FT	A	GP	Dillingham	237	12A / B	12.0		59,729	4,218	0	43,709	107,656	65,670
06-3060	Pro Svcs Sp 4	FT	A	SS	Anchorage	200	20B / C	12.0		80,570	0	0	56,288	136,858	83,483
06-3061	Pro Svcs Sp 3	FT	A	GP	Anchorage	200	19F	12.0		80,730	5,702	0	52,372	138,804	84,670
06-3062	Office Assistant 2	FT	A	GP	Juneau	205	10A / B	12.0		40,560	2,893	408	35,970	79,831	48,697

Note: If a position is split, an asterisk (*) will appear in the Split/Count column. If the split position is also counted in the component, two asterisks (**) will appear in this column. [No valid job title] appearing in the Job Class Title indicates that the PCN has an invalid class code or invalid range for the class code effective date of this scenario.

Personal Services Expenditure Detail
Department of Family and Community Services

Scenario: FY2025 Governor (20959)
Component: Front Line Social Workers (3318)
RDU: Children's Services (486)

PCN	Job Class Title	Time Status	Retire Code	Barg Unit	Location	Salary Sched	Range / Step	Comp Months	Split / Count	Annual Salaries	COLA	Premium Pay	Annual Benefits	Total Costs	UGF Amount
06-3063	Accounting Technician 1	FT	A	GP	Anchorage	200	12B / C	12.0		44,624	3,152	0	37,478	85,254	52,005
06-3064	Social Services Associate	FT	A	GP	Bethel	250	12F / G	12.0		75,826	5,355	0	50,349	131,530	80,233
06-3065	Pro Svcs Sp 3	FT	A	GP	Juneau	205	19J	12.0		90,968	6,561	1,925	57,389	156,843	95,674
06-3066	Pro Svcs Sp 2	FT	A	GP	Fairbanks	203	17C / D	12.0		66,996	4,894	2,302	47,656	121,848	74,327
06-3067	Pro Svcs Sp 2	FT	A	GP	Anchorage	200	17F / G	12.0		72,697	5,205	1,000	49,471	128,373	78,308
06-3069	Pro Svcs Sp 3	FT	A	GP	Juneau	205	19B / C	12.0		75,363	5,323	0	50,158	130,844	79,815
06-3070	Pro Svcs Sp 1	FT	A	GP	Wasilla	200	15B / C	12.0		55,173	4,476	8,202	45,213	113,064	68,969
06-3072	Pro Svcs Sp 4	FT	A	SS	Anchorage	200	20D / E	12.0		85,940	0	6,642	61,243	153,825	93,833
06-3073	Pro Svcs Sp 2	FT	A	GP	Fairbanks	203	17A / B	12.0		61,972	4,872	7,018	47,529	121,391	74,049
06-3074	Protective Services Manager 2	FT	A	SS	Wasilla	200	22K	12.0		110,531	0	0	68,647	179,178	109,299
06-3076	Pro Svcs Sp 1	FT	A	GP	Anchorage	200	15B / C	9.0		41,403	3,019	1,339	31,934	77,695	47,394
06-3077	C/C Lic Spec 2	FT	A	SS	Wasilla	99	18M / N	12.0		91,188	0	0	60,668	151,856	92,632
06-3080	Administrative Assistant 2	FT	A	SS	Kenai	600	14F / J	12.0		61,683	0	3,460	49,924	115,067	70,191
06-3082	Office Assistant 2	FT	A	GP	Anchorage	200	10B / C	12.0		39,729	2,806	0	35,459	77,994	47,576
06-3085	Protective Services Manager 1	FT	A	SS	Anchorage	200	21N / O	12.0		116,912	0	633	71,540	189,085	115,342
06-3096	Pro Svcs Sp 4	FT	A	SS	Juneau	205	20F / J	12.0		96,540	0	8,428	66,352	171,320	104,505
06-3098	Pro Svcs Sp 2	FT	A	GP	Anchorage	200	17B / C	9.0		46,293	3,340	1,000	33,811	84,444	51,511
06-3100	Pro Svcs Sp 1	FT	A	GP	Anchorage	200	15B / C	12.0		53,628	3,787	0	41,192	98,607	60,150
06-3102	Pro Svcs Sp 4	FT	A	SS	Fairbanks	203	20R	12.0		124,675	0	0	74,481	199,156	121,485
06-3108	Social Services Associate	FT	A	GP	Juneau	205	12B / C	12.0		47,206	3,356	312	38,672	89,546	54,623
06-3109	Social Services Associate	FT	A	GP	Kenai	200	12A / B	9.0		32,702	2,334	348	27,936	63,320	38,625
06-3114	Administrative Officer 2	FT	A	SS	Wasilla	200	19E	12.0		81,973	0	0	56,866	138,839	84,692
06-3115	Administrative Officer 2	FT	A	SS	Fairbanks	203	19D	12.0		81,890	0	0	56,832	138,722	84,620
06-3117	Pro Svcs Sp 2	FT	A	GP	Ketchikan	200	17C / D	9.0		49,389	3,641	2,167	35,570	90,767	55,368
06-3119	C/C Lic Spec 1	FT	A	GP	Anchorage	200	16C / D	12.0		59,665	4,214	0	43,682	107,561	65,612
06-3122	Pro Svcs Sp 1	FT	A	GP	Anchorage	200	15A / B	9.0		39,743	2,822	218	30,787	73,570	44,878
06-3125	Pro Svcs Sp 4	FT	A	SS	Anchorage	200	20D	12.0		84,989	0	1,154	58,587	144,730	88,285
06-3126	Pro Svcs Sp 4	FT	A	SS	Wasilla	99	20Q	12.0		130,600	0	1,503	77,545	209,648	127,885
06-3139	Pro Svcs Sp 4	FT	A	SS	Kenai	200	20D / E	12.0		86,786	0	3,379	60,246	150,411	91,751
06-3140	Pro Svcs Sp 3	FT	A	GP	Fairbanks	203	19E / F	12.0		83,148	6,272	5,656	55,702	150,778	91,975
06-3141	Pro Svcs Sp 3	FT	A	GP	Homer	200	19C / D	12.0		74,812	5,284	0	49,931	130,027	79,317
06-3143	Social Services Associate	FT	A	GP	Kenai	200	12G	12.0		51,383	3,636	102	40,308	95,429	58,212
06-3154	Social Services Associate	FT	A	GP	Juneau	205	12B / C	12.0		47,307	3,413	1,020	39,006	90,746	55,355
06-3156	Office Assistant 2	FT	A	GP	Anchorage	200	10B / C	9.0		29,462	2,081	0	26,456	57,999	35,379
06-3159	Pro Svcs Sp 1	FT	A	GP	Fairbanks	203	15A	9.0		39,692	2,932	1,820	31,427	75,871	46,281
06-3161	Administrative Assistant 2	FT	A	SS	Anchorage	600	14C / D	12.0		54,342	0	0	45,469	99,811	60,885
06-3164	Office Assistant 1	FT	A	GP	Bethel	150	8D / E	12.0		56,687	4,004	0	42,454	103,145	58,227

Note: If a position is split, an asterisk (*) will appear in the Split/Count column. If the split position is also counted in the component, two asterisks (**) will appear in this column. [No valid job title] appearing in the Job Class Title indicates that the PCN has an invalid class code or invalid range for the class code effective date of this scenario.

Personal Services Expenditure Detail
Department of Family and Community Services

Scenario: FY2025 Governor (20959)
Component: Front Line Social Workers (3318)
RDU: Children's Services (486)

PCN	Job Class Title	Time Status	Retire Code	Barg Unit	Location	Salary Sched	Range / Step	Comp Months	Split / Count	Annual Salaries	COLA	Premium Pay	Annual Benefits	Total Costs	UGF Amount
06-3170	Pro Svcs Sp 3	FT	A	GP	Kenai	200	19J	12.0		86,639	6,119	0	54,809	147,567	90,016
06-3171	Pro Svcs Sp 2	FT	A	GP	Sitka	205	17C / D	9.0		51,860	3,768	1,489	36,309	93,426	56,990
06-3172	Pro Svcs Sp 3	FT	A	GP	Kotzebue	260	19D / E	12.0		121,258	8,564	0	69,090	198,912	121,336
06-3176	C/C Lic Spec 2	FT	A	SS	Anchorage	99	18N	12.0		95,583	0	0	62,481	158,064	96,419
06-3179	Social Services Associate	FT	A	GP	Bethel	250	12C / D	12.0		68,628	4,971	1,762	48,107	123,468	75,316
06-3180	Pro Svcs Sp 1	FT	A	GP	Utqiagvik	250	15C	9.0		62,112	5,061	9,555	43,866	120,594	73,562
06-3182	Pro Svcs Sp 1	FT	A	GP	Fairbanks	203	15B / C	9.0		42,175	3,101	1,734	32,415	79,425	48,449
06-3185	Pro Svcs Sp 2	FT	A	GP	Anchorage	200	17K / L	12.0		80,683	6,394	9,856	56,418	153,351	93,544
06-3186	Protective Services Manager 1	FT	A	SS	Juneau	205	21P / Q	12.0		131,435	0	0	77,270	208,705	127,310
06-3187	Eligibility Technician 2	FT	A	GP	Anchorage	200	14C / D	12.0		51,431	3,632	0	40,286	95,349	58,163
06-3188	Pro Svcs Sp 1	FT	A	GP	Delta Junction	200	15B / C	12.0		55,205	3,938	560	42,074	101,777	62,084
06-3189	Pro Svcs Sp 2	FT	A	GP	King Salmon	250	17J / K	12.0		116,315	8,215	0	67,051	191,581	116,864
06-3191	Social Services Associate	FT	A	GP	Saint Marys	250	12J / K	12.0		82,845	5,851	0	53,244	141,940	86,583
06-3192	Pro Svcs Sp 4	FT	A	SS	Ketchikan	200	20C / D	12.0		84,788	0	9,030	61,753	155,571	94,898
06-3193	Social Services Associate	FT	A	GP	Bethel	250	12B / C	12.0		67,225	4,791	612	47,053	119,681	73,005
06-3194	Pro Svcs Sp 3	FT	A	GP	Wasilla	200	19C / D	12.0		75,350	5,322	0	50,153	130,825	79,803
06-3195	Pro Svcs Sp 2	FT	A	GP	Petersburg	200	17C / D	9.0		49,389	3,928	6,234	37,247	96,798	59,047
06-3196	Social Services Associate	FT	A	GP	Fairbanks	203	12A / B	9.0		33,681	2,494	1,632	28,870	66,677	40,673
06-3197	Pro Svcs Sp 3	FT	A	GP	Kenai	200	19E / F	12.0		78,580	5,620	1,000	51,897	137,097	83,629
06-3198	Pro Svcs Sp 4	FT	A	SS	Bethel	250	20A / B	9.0		89,435	0	5,304	56,369	151,108	92,176
06-3200	Pro Svcs Sp 4	FT	A	SS	Fairbanks	203	20D / E	12.0		88,847	0	0	59,702	148,549	90,615
06-3201	Protective Services Manager 1	FT	A	SS	Bethel	250	21B / C	9.0		96,564	0	0	57,122	153,686	93,749
06-3202	Pro Svcs Sp 2	FT	A	GP	Wasilla	200	17A / B	12.0		59,740	4,540	4,546	45,589	114,415	69,793
06-3205	Pro Svcs Sp 1	FT	A	GP	Anchorage	200	15A / B	9.0		39,936	2,820	0	30,777	73,533	44,855
06-3206	Social Services Associate	FT	A	GP	Delta Junction	200	12B / C	12.0		44,889	3,192	306	37,714	86,101	52,522
06-3213	Pro Svcs Sp 2	FT	A	GP	Juneau	205	17A / B	12.0		63,902	5,145	8,942	49,119	127,108	77,536
06-3214	Pro Svcs Sp 2	FT	A	GP	Bethel	250	17A / B	9.0		69,015	4,874	0	42,772	116,661	71,163
06-3216	Pro Svcs Sp 1	FT	A	GP	Anchorage	200	15D / E	9.0		44,328	3,689	7,904	35,849	91,770	55,980
06-3217	Pro Svcs Sp 2	FT	A	GP	Fairbanks	203	17A / B	12.0		61,167	4,602	3,993	45,949	115,711	70,584
06-3243	Pro Svcs Sp 1	FT	A	GP	Wasilla	200	15B / C	12.0		53,518	3,780	0	41,147	98,445	60,052
06-3265	Eligibility Technician 2	FT	A	GP	Wasilla	200	14M / N	12.0		68,995	4,873	0	47,531	121,399	74,053
06-3269	Pro Svcs Sp 2	FT	A	GP	Anchorage	200	17F	12.0		70,473	5,297	4,524	50,007	130,301	79,484
06-3270	Pro Svcs Sp 2	FT	A	GP	Anchorage	200	17A / B	12.0		61,067	4,392	1,116	44,721	111,296	67,891
06-3271	Pro Svcs Sp 1	FT	A	GP	Fairbanks	203	15A / B	12.0		53,752	4,185	5,508	43,515	106,960	65,246
06-3278	Eligibility Technician 4	FT	A	SS	Wasilla	200	17F	12.0		74,277	0	0	53,692	127,969	78,061

Note: If a position is split, an asterisk (*) will appear in the Split/Count column. If the split position is also counted in the component, two asterisks (**) will appear in this column. [No valid job title] appearing in the Job Class Title indicates that the PCN has an invalid class code or invalid range for the class code effective date of this scenario.

Personal Services Expenditure Detail
Department of Family and Community Services

Scenario: FY2025 Governor (20959)
Component: Front Line Social Workers (3318)
RDU: Children's Services (486)

PCN	Job Class Title	Time Status	Retire Code	Barg Unit	Location	Salary Sched	Range / Step	Comp Months	Split / Count	Annual Salaries	COLA	Premium Pay	Annual Benefits	Total Costs	UGF Amount
06-3350	Pro Svcs Sp 2	FT	A	GP	Fairbanks	203	17B / C	12.0		65,091	4,806	2,958	47,141	119,996	73,198
06-3354	Pro Svcs Sp 4	FT	A	SS	Anchorage	200	20M	12.0		103,168	0	1,173	66,093	170,434	103,965
06-3356	Pro Svcs Sp 2	FT	A	GP	Nome	237	17A / B	9.0		62,546	5,232	11,539	44,863	124,180	75,750
06-3365	Pro Svcs Sp 2	FT	A	GP	Wasilla	200	17C / D	12.0		63,927	5,121	8,581	48,980	126,609	77,232
06-3366	C/C Lic Spec 1	FT	A	GP	Anchorage	200	16A / B	12.0		55,549	3,923	0	41,985	101,457	61,889
06-3367	C/C Lic Spec 1	FT	A	GP	Ketchikan	200	16M / N	12.0		80,613	5,693	0	52,324	138,630	84,564
06-3368	Pro Svcs Sp 4	FT	A	SS	Wasilla	200	20M / N	12.0		103,866	0	0	65,897	169,763	103,555
06-3369	C/C Lic Spec 1	FT	A	GP	Fairbanks	203	16C / D	12.0		61,953	4,419	612	44,879	111,863	68,236
06-3370	C/C Lic Spec 2	FT	A	SS	Ketchikan	200	18B / C	12.0		70,267	0	1,326	52,585	124,178	75,749
06-3374	Pro Svcs Sp 2	FT	A	GP	Anchorage	200	17C / D	9.0		49,389	3,488	0	34,676	87,553	53,407
06-3375	Pro Svcs Sp 1	FT	A	GP	Anchorage	200	15B / C	12.0		55,078	3,890	0	41,790	100,758	61,462
06-3389	Social Services Associate	FT	A	GP	Fairbanks	203	12E / F	12.0		51,188	3,615	0	40,186	94,989	57,943
06-3390	Social Services Associate	FT	A	GP	Anchorage	200	12K / L	12.0		55,795	3,941	0	42,086	101,822	62,111
06-3398	C/C Lic Spec 1	FT	A	GP	Kenai	200	16G / J	12.0		70,800	5,072	1,020	48,696	125,588	76,609
06-3402	Pro Svcs Sp 1	FT	A	GP	Juneau	205	15J	9.0		52,138	3,682	0	35,810	91,630	55,894
06-3403	Pro Svcs Sp 2	FT	A	GP	Ketchikan	200	17B / C	12.0		61,969	4,532	2,201	45,541	114,243	69,688
06-3407	Pro Svcs Sp 1	FT	A	GP	Fairbanks	203	15C	9.0		42,647	3,012	0	31,895	77,554	47,308
06-3408	Pro Svcs Sp 4	FT	A	SS	Kenai	200	20C / D	12.0		83,255	0	5,269	59,569	148,093	90,337
06-3409	Pro Svcs Sp 2	FT	A	GP	Anchorage	200	17D / E	9.0		51,085	4,278	9,491	39,291	104,145	63,529
06-3411	Pro Svcs Sp 2	FT	A	GP	Gakona	200	17C / D	12.0		64,880	5,100	7,339	48,861	126,180	76,970
06-3412	Pro Svcs Sp 4	FT	A	SS	Fairbanks	203	20A / B	12.0		80,953	0	5,406	58,676	145,035	88,471
06-3417	Pro Svcs Sp 3	FT	A	GP	Anchorage	200	19C / D	12.0		73,960	5,259	510	49,790	129,519	79,007
06-3418	Pro Svcs Sp 3	FT	A	GP	Kotzebue	260	19E / F	12.0		125,235	8,845	0	70,730	204,810	124,934
06-3421	Ss Prog Ofc	FT	A	SS	Anchorage	200	21L	12.0		106,683	0	0	67,059	173,742	105,983
06-3422	Pro Svcs Sp 2	FT	A	GP	Wasilla	200	17A / B	12.0		60,338	4,261	0	43,960	108,559	66,221
06-3423	Pro Svcs Sp 3	FT	A	GP	Anchorage	200	19M / N	12.0		96,724	6,831	0	58,969	162,524	99,140
06-3424	Pro Svcs Sp 2	FT	A	GP	Anchorage	200	17B / C	12.0		63,006	5,232	11,070	49,627	128,935	78,650
06-3425	Pro Svcs Sp 2	FT	A	GP	Anchorage	200	17B / C	9.0		47,707	3,409	561	34,214	85,891	52,394
06-3427	Pro Svcs Sp 2	FT	A	GP	Anchorage	200	17B / C	12.0		62,761	4,432	0	44,960	112,153	68,413
06-3428	Pro Svcs Sp 2	FT	A	GP	Anchorage	200	17C / D	9.0		49,389	3,488	0	34,676	87,553	53,407
06-3429	Pro Svcs Sp 3	FT	A	GP	Anchorage	200	19A / B	12.0		70,178	5,819	12,210	53,056	141,263	86,170
06-3430	Pro Svcs Sp 4	FT	A	SS	Anchorage	200	20F	12.0		90,792	0	1,020	60,925	152,737	93,170
06-3431	Pro Svcs Sp 2	FT	A	GP	Anchorage	200	17A / B	9.0		44,982	3,177	0	32,858	81,017	49,420
06-3432	Pro Svcs Sp 2	FT	A	GP	Anchorage	200	17B / C	9.0		47,707	3,369	0	33,982	85,058	51,885
06-3433	Pro Svcs Sp 2	FT	A	GP	Fairbanks	203	17A / B	12.0		61,895	4,371	0	44,602	110,868	67,630
06-3434	Pro Svcs Sp 2	FT	A	GP	Fairbanks	203	17C	12.0		65,520	4,815	2,652	47,192	120,179	73,309
06-3436	Pro Svcs Sp 2	FT	A	GP	Fairbanks	203	17A / B	12.0		62,547	4,417	0	44,871	111,835	68,219
06-3449	Social Services Associate	FT	A	GP	Wasilla	200	12A / B	12.0		43,275	3,184	1,813	37,669	85,941	52,424

Note: If a position is split, an asterisk (*) will appear in the Split/Count column. If the split position is also counted in the component, two asterisks (**) will appear in this column. [No valid job title] appearing in the Job Class Title indicates that the PCN has an invalid class code or invalid range for the class code effective date of this scenario.

Personal Services Expenditure Detail
Department of Family and Community Services

Scenario: FY2025 Governor (20959)
Component: Front Line Social Workers (3318)
RDU: Children's Services (486)

PCN	Job Class Title	Time Status	Retire Code	Barg Unit	Location	Salary Sched	Range / Step	Comp Months	Split / Count	Annual Salaries	COLA	Premium Pay	Annual Benefits	Total Costs	UGF Amount
06-3462	Pro Svcs Sp 4	FT	A	SS	Utqiagvik	250	20B / C	9.0		89,745	0	1,452	54,908	146,105	89,124
06-3465	Pro Svcs Sp 4	FT	A	SS	Juneau	205	20F	12.0		95,326	0	3,617	63,867	162,810	99,314
06-3547	Social Services Associate	FT	A	GP	Wasilla	200	12B / C	12.0		43,951	3,222	1,677	37,892	86,742	52,913
06-3586	Administrative Officer 2	FT	A	SS	Anchorage	200	19D	12.0		79,498	0	11,466	60,575	151,539	92,439
06-3609	Administrative Assistant 2	FT	A	GG	Juneau	99	14N	12.0		69,557	4,912	0	47,763	122,232	74,562
06-3623	Administrative Assistant 2	FT	A	SS	Fairbanks	603	14D / E	12.0		59,318	0	0	47,521	106,839	65,172
06-3642	Pro Svcs Sp 2	FT	A	GP	Anchorage	200	17C / D	9.0		49,389	3,488	0	34,676	87,553	53,407
06-3663	Administrative Assistant 2	FT	A	SS	Wasilla	600	14B / C	12.0		52,733	0	3,745	46,350	102,828	62,725
06-3691	Pro Svcs Sp 4	FT	A	SS	Wasilla	200	20F / J	12.0		91,186	0	7,872	63,914	162,972	99,413
06-3708	Pro Svcs Sp 2	FT	A	GP	Juneau	205	17A / B	12.0		62,810	4,734	4,215	46,718	118,477	72,271
06-3710	Pro Svcs Sp 2	FT	A	GP	Ketchikan	200	17A / B	9.0		46,010	3,448	2,816	34,444	86,718	52,898
06-3712	Pro Svcs Sp 3	FT	A	GP	Anchorage	200	19L / M	12.0		93,428	6,634	510	57,820	158,392	96,619
06-3715	Pro Svcs Sp 4	FT	A	SS	Anchorage	200	20E / F	12.0		87,880	0	0	59,303	147,183	89,782
06-3716	Pro Svcs Sp 2	FT	A	GP	Anchorage	200	17B / C	9.0		47,707	3,369	0	33,982	85,058	51,885
06-3724	Pro Svcs Sp 4	FT	A	SS	Fairbanks	203	20J	12.0		96,554	0	4,386	64,690	165,630	101,034
06-3729	Pro Svcs Sp 1	FT	A	GP	Bethel	250	15D / E	9.0		66,500	4,697	0	41,734	112,931	68,888
06-3730	Office Assistant 1	FT	A	GP	Fairbanks	203	8B / C	12.0		36,426	2,573	0	34,096	73,095	44,588
06-3741	Pro Svcs Sp 2	FT	A	GP	Juneau	205	17C / D	12.0		67,967	4,804	51	47,128	119,950	73,170
06-3743	Pro Svcs Sp 4	FT	A	SS	Ketchikan	200	20C / D	12.0		84,084	0	0	57,737	141,821	86,511
06-3744	Pro Svcs Sp 2	FT	A	GP	Wasilla	200	17B / C	12.0		63,289	4,470	0	45,177	112,936	68,891
06-3745	Pro Svcs Sp 2	FT	A	GP	Wasilla	200	17A / B	12.0		61,291	5,054	10,266	48,588	125,199	76,371
06-3746	Pro Svcs Sp 2	FT	A	GP	Anchorage	99	17O	12.0		83,637	5,907	0	53,571	143,115	87,300
06-3747	Administrative Assistant 2	FT	A	SS	Anchorage	99	14M	12.0		74,676	0	102	53,899	128,677	78,493
06-3748	Social Services Associate	FT	A	GP	Anchorage	200	12B / C	12.0		44,011	3,115	102	37,267	84,495	51,542
06-3749	Pro Svcs Sp 2	FT	A	GP	Fairbanks	203	17F / G	9.0		55,833	3,976	459	37,523	97,791	59,653
06-3750	Social Services Associate	FT	A	GP	Fairbanks	203	12D / E	12.0		48,804	3,447	0	39,202	91,453	55,786
06-3751	Pro Svcs Sp 1	FT	A	GP	Fairbanks	203	15A / B	9.0		41,184	2,950	586	31,533	76,253	46,514
06-3763	Pro Svcs Sp 2	FT	A	GP	Anchorage	200	17G / J	12.0		73,419	5,224	547	49,582	128,772	78,551
06-3764	Pro Svcs Sp 1	FT	A	GP	Anchorage	200	15A / B	12.0		51,865	3,699	510	40,675	96,749	59,017
06-3765	Pro Svcs Sp 2	FT	A	GP	Fairbanks	203	17C	12.0		65,520	5,103	6,732	48,875	126,230	77,000
06-3766	Pro Svcs Sp 1	FT	A	GP	Fairbanks	203	15C	12.0		56,862	4,270	3,602	44,012	108,746	66,335
06-3767	Pro Svcs Sp 3	FT	A	GP	Kenai	200	19C / D	12.0		74,318	5,249	0	49,727	129,294	78,869
06-3769	Social Services Associate	FT	A	GP	Wasilla	200	12E / F	12.0		49,091	3,467	0	39,321	91,879	56,046
06-3770	Pro Svcs Sp 4	FT	A	SS	Nome	237	20L	9.0		102,664	0	1,122	60,101	163,887	99,971
06-3771	Administrative Officer 1	FT	A	SS	Juneau	205	17C / D	12.0		72,100	0	0	52,794	124,894	76,185
06-3789	Pro Svcs Sp 1	FT	A	GP	Kenai	200	15A / B	9.0		39,985	2,824	0	30,797	73,606	44,900
06-3790	Pro Svcs Sp 3	FT	A	GP	Kenai	200	19J	12.0		86,639	6,220	1,428	55,398	149,685	91,308
06-3792	Protective Services Manager 1	FT	A	SS	Anchorage	200	21F / J	12.0		99,383	0	1,863	64,817	166,063	101,298

Note: If a position is split, an asterisk (*) will appear in the Split/Count column. If the split position is also counted in the component, two asterisks (**) will appear in this column.
 [No valid job title] appearing in the Job Class Title indicates that the PCN has an invalid class code or invalid range for the class code effective date of this scenario.

Personal Services Expenditure Detail
Department of Family and Community Services

Scenario: FY2025 Governor (20959)
Component: Front Line Social Workers (3318)
RDU: Children's Services (486)

PCN	Job Class Title	Time Status	Retire Code	Barg Unit	Location	Salary Sched	Range / Step	Comp Months	Split / Count	Annual Salaries	COLA	Premium Pay	Annual Benefits	Total Costs	UGF Amount
06-3855	Social Services Associate	FT	A	GP	Utqiagvik	250	12A / B	9.0		49,052	4,204	10,470	38,856	102,582	62,575
06-3856	Office Assistant 1	FT	A	GP	Fairbanks	203	8A / B	12.0		35,295	2,493	0	33,630	71,418	43,565
06-3857	Social Services Associate	FT	A	GP	Fairbanks	203	12B / C	12.0		46,230	3,686	5,967	40,602	96,485	58,856
06-3858	Administrative Assistant 2	FT	A	GP	Wasilla	200	14J / K	12.0		61,852	4,435	947	44,975	112,209	68,448
06-3859	Social Services Associate	FT	A	GP	Kenai	200	12B / C	12.0		44,107	3,275	2,267	38,200	87,849	53,588
06-3860	Social Services Associate	FT	A	GP	Wasilla	200	12A	12.0		42,296	3,005	259	36,625	82,185	50,133
06-3862	Pro Svcs Sp 1	FT	A	GP	Craig	200	15C / D	9.0		42,954	3,112	1,109	32,479	79,654	48,589
06-3863	Office Assistant 1	FT	A	GP	Anchorage	200	8B / C	9.0		26,530	1,874	0	25,247	53,651	32,727
06-3864	Social Services Associate	FT	A	GP	Juneau	205	12A / B	12.0		45,786	3,298	918	38,336	88,338	53,886
06-3866	Social Services Associate	FT	A	GP	Wasilla	200	12D / E	12.0		47,631	3,465	1,428	39,307	91,831	56,017
06-3867	Accounting Technician 1	FT	A	GP	Fairbanks	203	12C / D	12.0		47,802	3,376	0	38,789	89,967	54,880
06-3869	Pro Svcs Sp 1	FT	A	GP	Anchorage	200	15B / C	9.0		40,615	3,448	8,202	34,440	86,705	52,890
06-3870	Pro Svcs Sp 2	FT	A	GP	Anchorage	200	17B / C	12.0		62,063	5,074	9,781	48,706	125,624	76,631
06-3872	Pro Svcs Sp 2	FT	A	GP	Anchorage	200	17B / C	9.0		47,707	3,446	1,081	34,428	86,662	52,864
06-3873	Pro Svcs Sp 2	FT	A	GP	Juneau	205	17C / D	9.0		51,860	3,798	1,916	36,486	94,060	57,377
06-3875	Pro Svcs Sp 2	FT	A	GP	Anchorage	200	17G	9.0		54,595	4,285	6,083	39,333	104,296	63,621
06-3876	Pro Svcs Sp 1	FT	A	GP	Fairbanks	203	15C	12.0		56,862	4,016	0	42,526	103,404	63,076
06-3877	Pro Svcs Sp 2	FT	A	GP	Kenai	200	17D / E	12.0		65,965	4,659	0	46,281	116,905	71,312
06-3878	Protective Services Manager 1	FT	A	SS	Anchorage	200	21K / L	12.0		106,404	0	0	66,944	173,348	105,742
06-3879	Pro Svcs Sp 4	FT	A	SS	Anchorage	99	20Q	12.0		118,982	0	4,466	73,975	197,423	120,428
06-3880	Pro Svcs Sp 2	FT	A	GP	Bethel	250	17A / B	9.0		69,015	4,874	0	42,772	116,661	71,163
06-3882	Pro Svcs Sp 3	FT	A	GP	Juneau	205	19C / D	12.0		79,268	5,944	4,896	53,788	143,896	87,777
06-3883	C/C Lic Spec 1	FT	A	GP	Anchorage	200	16C / D	12.0		60,805	4,294	0	44,153	109,252	66,644
06-3888	Pro Svcs Sp 2	FT	A	GP	Anchorage	200	17J	12.0		75,797	6,193	11,895	55,244	149,129	90,969
06-3890	Pro Svcs Sp 2	FT	A	GP	Anchorage	200	17A / B	12.0		61,347	4,347	204	44,460	110,358	67,318
06-3891	Pro Svcs Sp 4	FT	A	SS	Anchorage	200	20K / L	12.0		99,923	0	1,683	64,965	166,571	101,608
06-3892	Pro Svcs Sp 1	FT	A	GP	Anchorage	200	15A / B	12.0		52,155	3,683	0	40,585	96,423	58,818
06-3893	Pro Svcs Sp 1	FT	A	GP	Anchorage	200	15B	12.0		53,313	3,765	0	41,062	98,140	59,865
06-3894	Pro Svcs Sp 3	FT	A	GP	Bethel	250	19J / K	12.0		133,267	9,412	0	74,043	216,722	132,200
06-3895	Pro Svcs Sp 2	FT	A	GP	Bethel	250	17C / D	9.0		74,090	5,233	0	44,865	124,188	75,755
06-3896	Pro Svcs Sp 2	FT	A	GP	Anchorage	200	17B / C	12.0		62,761	4,503	1,000	45,372	113,636	69,318
06-3897	Pro Svcs Sp 1	FT	A	GP	Juneau	205	15C / D	9.0		45,104	3,392	2,927	34,116	85,539	52,179
06-3898	Pro Svcs Sp 2	FT	A	GP	Juneau	205	17A / B	12.0		64,409	4,772	3,162	46,944	119,287	72,765
06-3899	Office Assistant 2	FT	A	GP	Anchorage	200	10C / D	12.0		40,943	2,892	0	35,960	79,795	48,675
06-3900	Pro Svcs Sp 2	FT	A	GP	Anchorage	200	17C / D	9.0		49,202	3,531	799	34,928	88,460	53,961
06-3902	C/C Lic Spec 2	FT	A	SS	Fairbanks	203	18L	12.0		90,106	0	0	60,221	150,327	91,700
06-3903	C/C Lic Spec 1	FT	A	GP	Anchorage	200	16N	12.0		80,613	5,693	0	52,324	138,630	84,564
06-3921	Office Assistant 1	FT	A	GP	Anchorage	200	8B / C	12.0		35,290	2,492	0	33,628	71,410	43,560

Note: If a position is split, an asterisk (*) will appear in the Split/Count column. If the split position is also counted in the component, two asterisks (**) will appear in this column. [No valid job title] appearing in the Job Class Title indicates that the PCN has an invalid class code or invalid range for the class code effective date of this scenario.

Personal Services Expenditure Detail
Department of Family and Community Services

Scenario: FY2025 Governor (20959)
Component: Front Line Social Workers (3318)
RDU: Children's Services (486)

PCN	Job Class Title	Time Status	Retire Code	Barg Unit	Location	Salary Sched	Range / Step	Comp Months	Split / Count	Annual Salaries	COLA	Premium Pay	Annual Benefits	Total Costs	UGF Amount
06-3922	Pro Svcs Sp 2	FT	A	GP	Anchorage	200	17D / E	12.0		66,474	4,765	1,000	46,904	119,143	72,677
06-3923	Office Assistant 1	FT	A	GP	Anchorage	200	8B / C	9.0		26,280	1,856	0	25,143	53,279	32,500
06-3924	Office Assistant 1	FT	A	GP	Anchorage	200	8E / F	12.0		37,856	2,674	0	34,686	75,216	45,882
06-3926	Pro Svcs Sp 2	FT	A	GP	Anchorage	200	17G	12.0		72,794	5,212	1,000	49,511	128,517	78,395
06-3927	Pro Svcs Sp 2	FT	A	GP	Anchorage	200	17A / B	12.0		59,927	4,785	7,819	47,016	119,547	72,924
06-3928	Pro Svcs Sp 4	FT	A	SS	Anchorage	200	20N / O	12.0		108,963	0	0	68,000	176,963	107,947
06-3929	Pro Svcs Sp 2	FT	A	GP	Anchorage	200	17C / D	12.0		65,104	5,199	8,512	49,437	128,252	78,234
06-3930	Pro Svcs Sp 4	FT	A	SS	Anchorage	200	20B / C	12.0		80,467	0	0	56,245	136,712	83,394
06-3931	Pro Svcs Sp 2	FT	A	GP	Anchorage	200	17A / B	12.0		60,936	5,098	11,247	48,846	126,127	76,938
06-3932	Pro Svcs Sp 2	FT	A	GP	Anchorage	200	17B / C	12.0		63,421	4,550	1,000	45,644	114,615	69,915
06-3933	Pro Svcs Sp 1	FT	A	GP	Utqiagvik	250	15C	9.0		62,112	4,612	3,185	41,238	111,147	67,800
06-3934	Pro Svcs Sp 2	FT	A	GP	Anchorage	200	17B / C	9.0		47,707	3,420	714	34,277	86,118	52,532
06-3935	Pro Svcs Sp 3	FT	A	GP	Anchorage	200	19F / G	12.0		83,085	6,526	9,315	57,186	156,112	95,228
06-3936	Pro Svcs Sp 4	FT	A	SS	Anchorage	200	20B / C	12.0		80,591	0	0	56,296	136,887	83,501
06-3937	Ss Prog Coord	FT	A	GP	Anchorage	200	20N / O	12.0		106,893	7,549	0	63,164	177,606	108,340
06-3938	Social Services Associate	FT	A	GP	Anchorage	200	12A / B	9.0		31,831	2,248	0	27,433	61,512	37,522
06-3939	Social Services Associate	FT	A	GP	Anchorage	200	12B / C	12.0		44,708	3,184	382	37,670	85,944	52,426
06-3940	Pro Svcs Sp 2	FT	A	GP	Wasilla	200	17K / L	12.0		78,887	5,996	6,019	54,094	144,996	88,448
06-3941	Social Services Associate	FT	A	GP	Anchorage	99	12N / O	12.0		59,906	4,241	150	43,844	108,141	65,966
06-3942	Social Services Associate	FT	A	GP	Anchorage	200	12C / D	12.0		45,830	3,237	0	37,976	87,043	53,096
06-3943	Social Services Associate	FT	A	GP	Anchorage	200	12G	12.0		51,383	3,629	0	40,266	95,278	58,120
06-3947	Pro Svcs Sp 2	FT	A	GP	Anchorage	200	17A / B	9.0		45,749	3,873	9,093	36,925	95,640	58,340
06-3950	Pro Svcs Sp 4	FT	A	SS	Fairbanks	203	20A / B	12.0		81,282	0	6,426	59,232	146,940	89,633
06-3951	Pro Svcs Sp 4	FT	A	SS	Juneau	205	20K / L	12.0		102,642	0	0	65,392	168,034	102,501
06-3954	Pro Svcs Sp 3	FT	A	GP	Fairbanks	203	19M / N	12.0		100,341	7,214	1,811	61,208	170,574	104,050
06-3955	Eligibility Technician 2	FT	A	GP	Wasilla	200	14B / C	12.0		50,223	3,547	0	39,788	93,558	57,070
06-3956	Pro Svcs Sp 2	FT	A	GP	Juneau	205	17C / D	12.0		69,147	4,884	0	47,594	121,625	74,191
06-3957	Pro Svcs Sp 2	FT	A	GP	Fairbanks	203	17C / D	12.0		67,227	4,819	1,000	47,214	120,260	73,359
06-3959	Pro Svcs Sp 2	FT	A	GP	Anchorage	200	17J / K	12.0		76,206	6,000	8,745	54,113	145,064	88,489
06-3960	Pro Svcs Sp 2	FT	A	GP	Anchorage	200	17N / O	12.0		88,940	6,436	2,193	56,663	154,232	94,082
06-3964	Office Assistant 1	FT	A	GP	Anchorage	200	8B / C	12.0		35,327	2,495	0	33,643	71,465	43,594
06-3966	Social Services Associate	FT	A	GP	Ketchikan	200	12C / D	12.0		46,430	3,279	0	38,223	87,932	53,639
06-3970	Administrative Assistant 2	FT	A	SS	Wasilla	600	14B / C	12.0		52,281	0	2,229	45,538	100,048	61,029
06-3971	Pro Svcs Sp 4	FT	A	SS	Sitka	205	20B / C	12.0		85,854	0	0	58,467	144,321	88,036
06-3976	C/C Lic Spec 1	FT	A	GP	Anchorage	200	16B / C	12.0		57,852	4,086	0	42,935	104,873	63,973
06-3997	Pro Svcs Sp 3	FT	A	GP	Fairbanks	203	19A / B	9.0		53,951	4,096	4,049	38,228	100,324	61,198
06-3999	Pro Svcs Sp 2	FT	A	GP	Anchorage	200	17B / C	9.0		46,557	3,788	7,078	36,427	93,850	57,249
06-4009	Accounting Technician 1	FT	A	GP	Wasilla	200	12B / C	12.0		44,107	3,266	2,136	38,146	87,655	53,470

Note: If a position is split, an asterisk (*) will appear in the Split/Count column. If the split position is also counted in the component, two asterisks (**) will appear in this column. [No valid job title] appearing in the Job Class Title indicates that the PCN has an invalid class code or invalid range for the class code effective date of this scenario.

Personal Services Expenditure Detail
Department of Family and Community Services

Scenario: FY2025 Governor (20959)
Component: Front Line Social Workers (3318)
RDU: Children's Services (486)

PCN	Job Class Title	Time Status	Retire Code	Barg Unit	Location	Salary Sched	Range / Step	Comp Months	Split / Count	Annual Salaries	COLA	Premium Pay	Annual Benefits	Total Costs	UGF Amount
06-4504	Pro Svcs Sp 3	FT	A	GP	Anchorage	200	19C / D	12.0		73,982	5,225	0	49,588	128,795	78,565
06-4505	Protective Services Manager 2	FT	A	SS	Juneau	205	22K / L	12.0		118,229	0	0	71,822	190,051	115,931
06-4506	Protective Services Manager 2	FT	A	SS	Anchorage	200	22L	12.0		114,130	0	0	70,131	184,261	112,399
06-4507	Protective Services Manager 2	FT	A	SS	Fairbanks	203	22M / N	12.0		121,794	0	0	73,293	195,087	119,003
06-4513	Pro Svcs Sp 2	FT	A	GP	Anchorage	200	17G	12.0		72,794	5,734	8,399	52,563	139,490	85,089
06-4524	C/C Lic Spec 2	FT	A	SS	Fairbanks	203	18K / L	12.0		88,597	0	0	59,599	148,196	90,400
06-4532	Pro Svcs Sp 4	FT	A	SS	Wasilla	200	20C / D	12.0		83,556	0	2,652	58,613	144,821	88,341
06-4533	Pro Svcs Sp 1	FT	A	GP	Fairbanks	203	15A / B	12.0		54,912	3,878	0	41,722	100,512	61,312
06-4534	Pro Svcs Sp 1	FT	A	GP	Wasilla	200	15A / B	12.0		52,074	4,711	14,634	46,588	118,007	71,984
06-4535	Pro Svcs Sp 3	FT	A	GP	Kenai	200	19A / B	12.0		68,861	4,863	0	47,476	121,200	73,932
06-4536	Pro Svcs Sp 1	FT	A	GP	Kenai	200	15B	9.0		39,985	2,969	2,050	31,642	76,646	46,754
06-4537	Pro Svcs Sp 4	FT	P	SS	Kenai	200	20J / K	12.0		96,276	0	2,472	63,786	162,534	99,146
06-4538	Pro Svcs Sp 4	FT	A	SS	Anchorage	200	20F	12.0		90,792	0	1,734	61,220	153,746	93,785
06-4539	Pro Svcs Sp 2	FT	A	GP	Wasilla	200	17A / B	12.0		61,291	4,426	1,377	44,921	112,015	68,329
06-4540	Pro Svcs Sp 2	FT	A	GP	Anchorage	200	17K / L	12.0		78,887	5,571	0	51,612	136,070	83,003
06-4541	Pro Svcs Sp 3	FT	A	GP	Anchorage	200	19C / D	12.0		74,363	5,277	357	49,893	129,890	79,233
06-4543	Pro Svcs Sp 3	FT	A	GP	Anchorage	200	19K / L	12.0		90,730	6,478	1,000	56,909	155,117	94,621
06-4544	Pro Svcs Sp 4	FT	A	SS	Anchorage	200	20K	9.0		72,587	0	2,884	48,421	123,892	75,574
06-4545	C/C Lic Spec 1	FT	A	GP	Anchorage	200	16B / C	12.0		58,280	4,116	0	43,111	105,507	64,359
06-4546	Social Services Associate	FT	A	GP	Anchorage	200	12B / C	12.0		45,045	3,181	0	37,652	85,878	52,386
06-4547	Pro Svcs Sp 3	FT	A	GP	Anchorage	200	19A / B	12.0		70,178	5,792	11,837	52,902	140,709	85,833
06-4548	Pro Svcs Sp 4	FT	A	SS	Bethel	250	20F / J	12.0		137,601	0	5,610	82,127	225,338	137,456
06-4549	Pro Svcs Sp 2	FT	A	GP	Anchorage	200	17J / K	12.0		76,001	5,368	0	50,421	131,790	80,392
06-4550	Pro Svcs Sp 3	FT	A	GP	Wasilla	200	19C / D	12.0		73,623	5,725	7,435	52,507	139,290	84,967
06-4551	Pro Svcs Sp 4	FT	A	SS	Fairbanks	99	20Q	12.0		125,554	0	1,581	75,496	202,631	123,605
06-4552	Pro Svcs Sp 2	FT	A	GP	Fairbanks	203	17A / B	12.0		63,180	4,926	6,566	47,841	122,513	74,733
06-4553	Pro Svcs Sp 3	FT	A	GP	Fairbanks	203	19C / D	12.0		75,901	5,361	0	50,380	131,642	80,302
06-4554	Pro Svcs Sp 3	FT	A	GP	Anchorage	200	19B / C	12.0		72,484	5,539	5,942	51,421	135,386	82,586
06-4555	Social Services Associate	FT	A	GP	Bethel	250	12D / E	12.0		71,087	5,021	0	48,394	124,502	75,946
06-4556	Pro Svcs Sp 3	FT	A	GP	Fairbanks	203	19N / O	12.0		102,059	7,268	847	61,519	171,693	104,733
06-4557	C/C Lic Spec 1	FT	A	GP	Fairbanks	203	16C / D	12.0		62,183	4,392	0	44,721	111,296	67,891
06-4558	Pro Svcs Sp 1	FT	A	GP	Fairbanks	203	15A / B	12.0		53,404	3,862	1,280	41,628	100,174	61,106
06-4567	C/C Lic Spec 3	FT	A	SS	Fairbanks	203	20N	12.0		109,720	0	0	68,312	178,032	108,600
06-4568	Social Services Associate	FT	A	GP	Fairbanks	203	12B	9.0		33,681	2,387	122	28,247	64,437	39,307
06-4596	Eligibility Technician 2	FT	A	GP	Juneau	205	14B / C	12.0		52,197	3,686	0	40,602	96,485	58,856
06-4600	Pro Svcs Sp 1	FT	A	GP	Kotzebue	260	15C	9.0		66,251	4,679	0	41,632	112,562	68,663

Note: If a position is split, an asterisk (*) will appear in the Split/Count column. If the split position is also counted in the component, two asterisks (**) will appear in this column. [No valid job title] appearing in the Job Class Title indicates that the PCN has an invalid class code or invalid range for the class code effective date of this scenario.

Personal Services Expenditure Detail
Department of Family and Community Services

Scenario: FY2025 Governor (20959)
Component: Front Line Social Workers (3318)
RDU: Children's Services (486)

PCN	Job Class Title	Time Status	Retire Code	Barg Unit	Location	Salary Sched	Range / Step	Comp Months	Split / Count	Annual Salaries	COLA	Premium Pay	Annual Benefits	Total Costs	UGF Amount
06-4601	Nurse Consultant 1	FT	A	GP	Fairbanks	203	24K / L	12.0		132,721	9,373	0	73,818	215,912	131,706
06-4602	Accounting Technician 1	FT	A	GP	Wasilla	200	12C / D	12.0		45,449	3,265	777	38,139	87,630	53,454
06-4603	Nurse Consultant 1	FT	A	GP	Anchorage	200	24C / D	12.0		103,976	7,343	0	61,961	173,280	105,701
06-4604	Nurse Consultant 1	FT	A	GP	Wasilla	200	24J / K	12.0		124,806	8,814	0	70,553	204,173	124,546
06-4605	Office Assistant 1	FT	A	GP	Fairbanks	203	8C / D	9.0		28,121	1,986	0	25,903	56,010	34,166
06-4606	Nurse Consultant 2	FT	A	SS	Anchorage	200	26D / E	12.0		126,426	0	0	75,203	201,629	122,994
06-4607	Office Assistant 2	FT	A	GP	Anchorage	200	10B / C	12.0		39,936	2,820	0	35,544	78,300	47,763
06-4608	Accounting Technician 1	FT	A	GP	Wasilla	200	12C / D	12.0		46,337	3,381	1,532	38,817	90,067	54,941
06-4621	Social Services Associate	FT	A	GP	Anchorage	99	12P	12.0		65,524	4,628	0	46,099	116,251	70,913
06-4622	Social Services Associate	FT	A	GP	Anchorage	200	12B / C	9.0		33,567	2,371	0	28,149	64,087	39,093
06-4623	Social Services Associate	FT	A	GP	Anchorage	200	12C / D	12.0		45,460	3,211	0	37,823	86,494	52,761
06-4624	Project Assistant	FT	A	SS	Anchorage	600	16N	12.0		80,642	0	0	56,317	136,959	83,545
06-4626	Pro Svcs Sp 4	FT	A	SS	Anchorage	200	20F / J	12.0		91,284	0	2,730	61,833	155,847	95,067
06-4627	Pro Svcs Sp 2	FT	A	GP	Anchorage	200	17A / B	12.0		61,347	4,361	408	44,545	110,661	67,503
06-4628	Pro Svcs Sp 2	FT	A	GP	Anchorage	200	17B / C	9.0		47,707	3,668	4,234	35,729	91,338	55,716
06-4629	Pro Svcs Sp 2	FT	A	GP	Anchorage	200	17D / E	12.0		66,455	5,434	10,489	50,810	133,188	81,245
06-4630	Pro Svcs Sp 2	FT	A	GP	Anchorage	200	17B / C	9.0		47,707	3,369	0	33,982	85,058	51,885
06-4631	Pro Svcs Sp 3	FT	A	GP	Anchorage	200	19L / M	12.0		93,678	6,616	0	57,713	158,007	96,384
06-4632	Pro Svcs Sp 2	FT	A	GP	Anchorage	200	17A / B	12.0		59,852	4,298	1,000	44,172	109,322	66,686
06-4633	Protective Services Manager 1	FT	A	SS	Anchorage	200	21F / J	12.0		98,100	0	0	63,519	161,619	98,588
06-4634	Pro Svcs Sp 3	FT	A	GP	Kenai	200	19D / E	12.0		77,764	6,378	12,545	56,323	153,010	93,336
06-4638	Accounting Technician 1	FT	A	GP	Fairbanks	203	12F	12.0		51,188	3,615	0	40,186	94,989	57,943
06-4639	Office Assistant 2	FT	A	GP	Fairbanks	203	10E / F	12.0		44,684	3,156	0	37,503	85,343	52,059
06-4640	Administrative Assistant 2	FT	A	SS	Anchorage	600	14B	9.0		38,953	0	0	33,358	72,311	44,110
06-4641	Administrative Assistant 2	FT	A	SS	Wasilla	600	14F	12.0		59,842	0	2,589	48,805	111,236	67,854
06-4642	Mental Health Clinician 3	FT	A	GP	Anchorage	200	21B / C	12.0		83,187	5,875	0	53,385	142,447	86,893
06-4644	Eligibility Technician 2	FT	A	GP	Wasilla	200	14G	12.0		59,105	4,174	0	43,451	106,730	65,105
06-4645	Eligibility Technician 2	FT	A	GP	Anchorage	200	14J / K	12.0		63,358	4,475	0	45,206	113,039	68,954
06-4646	Eligibility Technician 2	FT	A	GP	Juneau	205	14M / N	12.0		72,742	5,159	306	49,203	127,410	77,720
06-4647	Eligibility Technician 2	FT	A	GP	Wasilla	200	14B / C	12.0		50,027	3,533	0	39,707	93,267	56,893
06-4648	Pro Svcs Sp 1	FT	A	GP	Kenai	200	15B / C	12.0		53,565	4,362	8,202	44,550	110,679	67,514
06-4649	Pro Svcs Sp 2	FT	A	GP	Bethel	250	17C / D	9.0		74,090	5,233	0	44,865	124,188	75,755
06-4650	Pro Svcs Sp 2	FT	A	GP	Bethel	250	17C / D	9.0		74,090	6,004	10,924	49,371	140,389	85,637
06-4651	Pro Svcs Sp 3	FT	A	GP	Wasilla	200	19F	12.0		80,730	5,921	3,105	53,653	143,409	87,480
06-4652	Pro Svcs Sp 3	FT	A	GP	Wasilla	200	19J	12.0		86,639	6,191	1,020	55,230	149,080	90,939
06-4653	C/C Lic Spec 1	FT	A	GP	Wasilla	200	16B / C	12.0		58,769	4,192	591	43,557	107,109	65,337
06-4655	C/C Lic Spec 1	FT	A	GP	Fairbanks	203	16B / C	12.0		60,028	4,239	0	43,832	108,099	65,940
06-4657	Pro Svcs Sp 1	FT	A	GP	Fairbanks	203	15A / B	12.0		54,912	3,878	0	41,722	100,512	61,312

Note: If a position is split, an asterisk (*) will appear in the Split/Count column. If the split position is also counted in the component, two asterisks (**) will appear in this column. [No valid job title] appearing in the Job Class Title indicates that the PCN has an invalid class code or invalid range for the class code effective date of this scenario.

Personal Services Expenditure Detail
Department of Family and Community Services

Scenario: FY2025 Governor (20959)
Component: Front Line Social Workers (3318)
RDU: Children's Services (486)

PCN	Job Class Title	Time Status	Retire Code	Barg Unit	Location	Salary Sched	Range / Step	Comp Months	Split / Count	Annual Salaries	COLA	Premium Pay	Annual Benefits	Total Costs	UGF Amount
06-4658	Pro Svcs Sp 2	FT	A	GP	Juneau	205	17D / E	12.0		70,991	5,910	12,693	53,590	143,184	87,342
06-4659	Pro Svcs Sp 2	FT	A	GP	Anchorage	200	17C	12.0		63,609	4,492	0	45,309	113,410	69,180
06-4660	Office Assistant 1	FT	A	GP	Anchorage	200	8B / C	9.0		25,844	1,825	0	24,964	52,633	32,106
06-4663	Social Services Associate	FT	A	GP	Kotzebue	260	12B / C	9.0		53,134	4,143	5,531	38,502	101,310	61,799
06-4664	Social Services Associate	FT	A	GP	Aniak	250	12O	12.0		94,244	6,757	1,428	58,535	160,964	98,188
06-4665	Office Assistant 1	FT	A	GP	Fairbanks	203	8A / B	12.0		35,043	2,475	0	33,526	71,044	43,337
06-4670	Office Assistant 3	FT	A	GP	Anchorage	200	11B / C	12.0		41,933	2,962	0	36,368	81,263	49,570
06-4671	Social Services Associate	FT	A	GP	Anchorage	200	12F	12.0		49,706	3,510	0	39,574	92,790	56,602
06-4672	Office Assistant 2	FT	A	GP	Wasilla	200	10J	12.0		46,917	3,314	0	38,424	88,655	54,080
06-4819	C/C Lic Spec 1	FT	A	GP	Bethel	250	16G	12.0		102,180	7,216	0	61,220	170,616	104,076
06-4922	Pro Svcs Sp 3	FT	A	GP	Wasilla	200	19C / D	12.0		72,973	5,292	1,954	49,978	130,197	72,910
06-8075	Eligibility Technician 2	FT	A	GP	Wasilla	200	14F	12.0		57,272	4,045	0	42,695	104,012	63,447
06-8104	Eligibility Technician 4	FT	A	SS	Anchorage	200	17C / D	12.0		69,157	0	0	51,580	120,737	73,650
06-8149	Eligibility Technician 2	FT	A	GP	Anchorage	200	14C / D	12.0		52,959	3,740	0	40,916	97,615	59,545
06-8485	Pro Svcs Sp 3	FT	P	GP	Wasilla	200	19D / E	12.0		76,278	5,387	0	50,535	132,200	80,642
06-9131	Office Assistant 2	FT	A	GP	Anchorage	200	10C / D	12.0		40,425	2,855	0	35,746	79,026	48,206
06-9132	Social Services Associate	FT	A	GP	Anchorage	200	12C / D	12.0		45,380	3,205	0	37,790	86,375	52,689
06-9133	Pro Svcs Sp 3	FT	A	GG	Anchorage	99	19P	12.0		106,992	7,556	0	63,205	177,753	108,429
06-9134	Pro Svcs Sp 3	FT	A	GP	Anchorage	200	19J	12.0		86,639	6,119	0	54,809	147,567	90,016
06-9135	Pro Svcs Sp 3	FT	A	GP	Anchorage	200	19M / N	12.0		98,197	6,935	0	59,577	164,709	100,473
06-9136	Pro Svcs Sp 3	FT	A	GP	Wasilla	200	19C / D	12.0		75,193	5,311	0	50,088	130,592	79,661
06-9140	Pro Svcs Sp 4	FT	A	GP	Wasilla	200	20S / T	12.0		125,346	9,711	12,157	75,791	223,005	136,033
06-9141	Pro Svcs Sp 2	FT	A	GP	Juneau	205	17B / C	12.0		64,488	4,604	695	45,959	115,746	70,605
06-9142	Pro Svcs Sp 3	FT	A	GP	Fairbanks	203	19L / M	12.0		96,490	6,815	0	58,873	162,178	98,929
06-9143	Pro Svcs Sp 3	FT	A	GP	Anchorage	200	19O / P	12.0		103,109	7,353	1,000	62,016	173,478	105,822
06-9144	Ss Prog Coord	FT	A	GP	Anchorage	200	20F	12.0		86,229	6,090	0	54,640	146,959	89,645
06-9145	Ss Prog Coord	FT	A	GP	Anchorage	200	20E / F	12.0		85,595	6,045	0	54,379	146,019	89,072
06-9146	Pro Svcs Sp 1	FT	A	GP	Wasilla	200	15B / C	12.0		53,912	4,242	6,151	43,847	108,152	65,973
06-9147	Social Services Associate	FT	A	GP	Kenai	200	12B / C	12.0		44,131	3,117	0	37,275	84,523	51,559
06-9148	Pro Svcs Sp 2	FT	A	GP	Homer	200	17B / C	12.0		61,781	4,363	0	44,555	110,699	67,526
06-9149	Pro Svcs Sp 1	FT	A	GP	Wasilla	200	15A / B	12.0		52,300	4,112	5,928	43,090	105,430	64,312
06-9150	Pro Svcs Sp 3	FT	A	GP	Anchorage	200	19J	12.0		86,639	6,291	2,432	55,812	151,174	92,216
06-9151	Pro Svcs Sp 2	FT	P	GP	Bethel	250	17E / F	12.0		102,915	7,970	9,941	65,624	186,450	113,735
06-9152	Pro Svcs Sp 4	FT	A	SS	Homer	99	20N	12.0		109,695	0	2,552	69,354	181,601	110,777
06-9153	Pro Svcs Sp 3	FT	A	GP	Anchorage	200	19G	12.0		83,187	5,979	1,475	53,994	144,635	88,227
06-9154	Pro Svcs Sp 1	FT	A	GP	Anchorage	200	15A / B	9.0		39,985	2,895	1,000	31,209	75,089	45,804
06-9155	Pro Svcs Sp 2	FT	A	GP	Anchorage	200	17C / D	12.0		64,375	5,135	8,339	49,065	126,914	77,418
06-9156	Pro Svcs Sp 3	FT	A	GP	Anchorage	200	19G	12.0		83,187	6,271	5,610	55,699	150,767	91,968

Note: If a position is split, an asterisk (*) will appear in the Split/Count column. If the split position is also counted in the component, two asterisks (**) will appear in this column. [No valid job title] appearing in the Job Class Title indicates that the PCN has an invalid class code or invalid range for the class code effective date of this scenario.

Personal Services Expenditure Detail
Department of Family and Community Services

Scenario: FY2025 Governor (20959)
Component: Front Line Social Workers (3318)
RDU: Children's Services (486)

PCN	Job Class Title	Time Status	Retire Code	Barg Unit	Location	Salary Sched	Range / Step	Comp Months	Split / Count	Annual Salaries	COLA	Premium Pay	Annual Benefits	Total Costs	UGF Amount
06-9157	Social Services Associate	FT	A	GP	Nome	237	12A / B	9.0		44,796	3,193	408	32,950	81,347	49,622
06-9158	Pro Svcs Sp 4	FT	A	SS	Anchorage	200	20C / D	12.0		84,210	0	2,578	58,853	145,641	88,841
06-9159	Pro Svcs Sp 4	FT	A	SS	Kotzebue	260	20F / J	12.0		149,005	0	7,244	87,505	243,754	148,690
06-9160	Pro Svcs Sp 1	FT	A	GP	Fairbanks	203	15B / C	12.0		56,618	3,999	0	42,426	103,043	62,856
06-9161	Pro Svcs Sp 2	FT	A	GP	Anchorage	200	17D / E	12.0		67,510	4,768	0	46,919	119,197	72,710
06-9162	Pro Svcs Sp 4	FT	A	SS	Anchorage	200	20E / F	12.0		87,690	0	4,660	61,147	153,497	93,633
06-9163	Social Services Associate	FT	A	GP	Anchorage	200	12G / J	12.0		51,656	3,648	0	40,379	95,683	58,367
06-9164	Pro Svcs Sp 2	FT	A	GP	Anchorage	200	17B / C	9.0		47,707	3,369	0	33,982	85,058	51,885
06-9165	Pro Svcs Sp 3	FT	A	GP	Anchorage	200	19J / K	12.0		87,879	6,319	1,590	55,977	151,765	92,577
06-9167	Pro Svcs Sp 4	FT	A	SS	Anchorage	200	20D / E	12.0		86,575	0	0	58,765	145,340	88,657
06-9168	Ss Prog Coord	FT	A	GP	Anchorage	200	20K / L	12.0		98,141	6,931	0	59,554	164,626	100,422
06-9171	Ss Prog Coord	FT	A	GP	Anchorage	200	20N / O	12.0		107,322	7,580	0	63,341	178,243	108,728
06-9172	C/C Lic Spec 1	FT	A	GP	Anchorage	200	16M / N	12.0		79,557	5,635	235	51,985	137,412	83,821
06-9173	C/C Lic Spec 1	FT	A	GP	Anchorage	99	16O	12.0		82,156	5,802	0	52,960	140,918	85,960
06-9174	C/C Lic Spec 1	FT	A	GP	Anchorage	99	16M	12.0		81,392	5,748	0	52,645	139,785	85,269
06-9175	C/C Lic Spec 1	FT	A	GP	Juneau	205	16J	12.0		74,490	5,280	268	49,908	129,946	79,267
06-9176	C/C Lic Spec 2	FT	A	SS	Anchorage	200	18B / C	12.0		71,412	0	0	52,510	123,922	75,592
06-9177	C/C Lic Spec 1	FT	A	GP	Wasilla	200	16B / C	12.0		57,470	4,132	1,040	43,206	105,848	64,567
06-9178	C/C Lic Spec 1	FT	A	GP	Kenai	200	16F / G	12.0		68,019	4,847	612	47,381	120,859	73,724
06-9179	C/C Lic Spec 1	FT	A	GP	Wasilla	200	16G / J	12.0		69,362	4,944	642	47,947	122,895	74,966
06-9180	C/C Lic Spec 1	FT	A	GP	Bethel	250	16E / F	12.0		98,309	6,943	0	59,623	164,875	100,574
06-9181	C/C Lic Spec 1	FT	A	GP	Fairbanks	203	16J / K	12.0		73,760	5,209	0	49,497	128,466	78,364
06-9182	Pro Svcs Sp 3	FT	A	GP	Anchorage	200	19D / E	12.0		76,674	5,822	5,765	53,077	141,338	86,216
06-9183	Pro Svcs Sp 4	FT	A	SS	Wasilla	200	20E	12.0		87,526	0	1,353	59,715	148,594	90,642
06-9184	Pro Svcs Sp 3	FT	A	GP	Wasilla	200	19G	12.0		83,187	6,764	12,582	58,575	161,108	98,276
06-9185	Pro Svcs Sp 3	FT	A	GP	Anchorage	200	19D / E	12.0		77,269	5,457	0	50,944	133,670	81,539
06-9186	Pro Svcs Sp 2	FT	A	GP	Wasilla	200	17D / E	12.0		66,738	4,892	2,532	47,645	121,807	74,302
06-9187	Pro Svcs Sp 1	FT	A	GP	Wasilla	200	15B / C	12.0		53,944	3,810	0	41,323	99,077	60,437
06-9188	Pro Svcs Sp 2	FT	A	GP	Wasilla	200	17B / C	12.0		63,289	4,470	0	45,177	112,936	68,891
06-9189	Pro Svcs Sp 2	FT	A	GP	Kenai	200	17B / C	12.0		61,460	5,190	12,030	49,385	128,065	78,120
06-9190	Pro Svcs Sp 2	FT	A	GP	Kenai	200	17B / C	12.0		61,762	4,678	4,480	46,395	117,315	71,562
06-9191	Pro Svcs Sp 2	FT	A	GP	Fairbanks	203	17A / B	12.0		62,509	4,546	1,854	45,620	114,529	69,863
06-9192	Pro Svcs Sp 1	FT	A	GP	Fairbanks	203	15A / B	12.0		53,868	4,165	5,112	43,400	106,545	64,993
06-9193	Pro Svcs Sp 2	FT	A	GP	Anchorage	200	17E / F	12.0		69,588	5,644	10,330	52,037	137,599	83,935
06-9194	Pro Svcs Sp 1	FT	A	GP	Anchorage	200	15B / C	12.0		55,110	3,892	0	41,804	100,806	61,492
06-9195	Pro Svcs Sp 1	FT	A	GP	Fairbanks	203	15A / B	12.0		54,315	3,836	0	41,476	99,627	60,773
06-9196	Pro Svcs Sp 3	FT	A	GP	Anchorage	200	19G / J	12.0		84,338	5,956	0	53,860	144,154	87,934
06-9267	Pro Svcs Sp 2	FT	A	GP	Anchorage	200	17C / D	12.0		64,842	4,579	0	45,818	115,239	70,296

Note: If a position is split, an asterisk (*) will appear in the Split/Count column. If the split position is also counted in the component, two asterisks (**) will appear in this column. [No valid job title] appearing in the Job Class Title indicates that the PCN has an invalid class code or invalid range for the class code effective date of this scenario.

Personal Services Expenditure Detail
Department of Family and Community Services

Scenario: FY2025 Governor (20959)
Component: Front Line Social Workers (3318)
RDU: Children's Services (486)

PCN	Job Class Title	Time Status	Retire Code	Barg Unit	Location	Salary Sched	Range / Step	Comp Months	Split / Count	Annual Salaries	COLA	Premium Pay	Annual Benefits	Total Costs	UGF Amount
06-9268	Accounting Technician 1	FT	A	GP	Fairbanks	203	12G / J	12.0		53,278	3,763	0	41,048	98,089	59,834
06-9270	Pro Svcs Sp 2	FT	A	GP	Anchorage	200	17B / C	12.0		63,326	4,472	0	45,193	112,991	68,925
06-9271	Pro Svcs Sp 2	FT	A	GP	Anchorage	200	17C / D	9.0		49,389	3,725	3,353	36,059	92,526	56,441
06-9272	Pro Svcs Sp 2	FT	A	GP	Anchorage	200	17C / D	12.0		65,571	4,681	714	46,413	117,379	71,601
06-9273	C/C Lic Spec 3	FT	A	SS	Anchorage	200	20F	12.0		90,792	0	0	60,504	151,296	92,291
06-9274	C/C Lic Spec 2	FT	A	SS	Kenai	200	18J	12.0		82,077	0	0	56,909	138,986	84,782
06-9276	Social Services Associate	FT	A	GP	Wasilla	200	12B / C	12.0		44,648	3,324	2,420	38,486	88,878	54,216
06-9278	Pro Svcs Sp 2	FT	A	GP	Wasilla	200	17L / M	12.0		82,982	6,414	7,842	56,536	153,774	93,802
06-9279	Pro Svcs Sp 1	FT	A	GP	Anchorage	200	15A / B	9.0		39,985	3,261	6,188	33,349	82,783	50,498
06-9280	Pro Svcs Sp 3	FT	A	GP	Anchorage	200	19A / B	9.0		52,521	4,277	8,037	39,283	104,118	63,512
06-9281	Pro Svcs Sp 2	FT	A	GP	Anchorage	200	17B / C	9.0		47,141	3,506	2,499	34,779	87,925	53,634
06-9282	Pro Svcs Sp 1	FT	A	GP	Anchorage	200	15B / C	12.0		53,439	4,209	6,151	43,652	107,451	65,545
06-9283	Pro Svcs Sp 3	FT	A	GP	Wasilla	200	19G / J	12.0		83,877	5,924	0	53,670	143,471	87,517
06-9284	Pro Svcs Sp 3	FT	A	GP	Kenai	200	19E / F	12.0		78,102	5,516	0	51,288	134,906	82,293
06-9285	C/C Lic Spec 1	FT	A	GP	Wasilla	200	16B / C	12.0		58,799	4,383	3,262	44,671	111,115	67,780
06-9286	Office Assistant 1	FT	A	GP	Anchorage	200	8A / B	9.0		25,353	1,791	0	24,761	51,905	31,662
06-9287	Accounting Technician 1	FT	A	GP	Wasilla	200	12B / C	12.0		45,033	3,299	1,677	38,339	88,348	53,892
06-9288	Office Assistant 2	FT	A	GP	Wasilla	200	10A / B	12.0		38,630	2,851	1,740	35,723	78,944	48,156
06-9289	Protective Services Manager 1	FT	A	SS	Kenai	200	21N	12.0		113,734	0	0	69,968	183,702	112,058
06-9290	Pro Svcs Sp 4	FT	A	SS	Anchorage	200	20K	12.0		96,782	0	1,262	63,496	161,540	98,539
06-9291	Pro Svcs Sp 3	FT	A	GP	Wasilla	200	19C / D	12.0		74,789	5,800	7,333	52,946	140,868	85,930
06-9292	Pro Svcs Sp 2	FT	A	GP	Fairbanks	203	17G	9.0		56,233	3,971	0	37,499	97,703	59,599
06-9295	Administrative Officer 1	FT	A	SS	Bethel	250	17D / E	12.0		104,799	0	0	66,282	171,081	104,359
06-9296	Protective Services Manager 2	FT	A	SS	Anchorage	200	22F	12.0		103,688	0	0	65,824	169,512	103,402
06-9297	Pro Svcs Sp 2	FT	A	GP	Bethel	250	17G	12.0		109,200	7,712	0	64,116	181,028	110,427
06-9298	Pro Svcs Sp 2	FT	A	GP	Bethel	250	17D / E	12.0		99,833	7,588	7,609	63,390	178,420	108,836
06-9301	Pro Svcs Sp 3	FT	A	GP	Fairbanks	203	19E / F	12.0		80,817	5,708	0	52,408	138,933	84,749
06-9302	Pro Svcs Sp 3	FT	A	GP	Anchorage	200	19M / N	12.0		96,724	7,608	11,002	63,508	178,842	109,094
06-9303	Pro Svcs Sp 3	FT	A	GP	Bethel	250	19G	12.0		124,781	8,813	0	70,543	204,137	124,524
06-9305	Social Services Associate	FT	A	GP	Sitka	205	12J	12.0		56,238	3,972	0	42,269	102,479	62,512
06-9306	Social Services Associate	FT	A	GP	Craig	200	12E / F	12.0		48,409	3,419	0	39,039	90,867	55,429
06-9307	Social Services Associate	FT	A	GP	Anchorage	200	12B / C	12.0		44,925	3,173	0	37,602	85,700	52,277
06-9308	Social Services Associate	FT	A	GP	Anchorage	200	12G	12.0		51,383	3,629	0	40,266	95,278	58,120
06-9309	Social Services Associate	FT	A	GP	Anchorage	200	12B / C	12.0		43,843	3,096	0	37,156	84,095	51,298
06-9310	Social Services Associate	FT	A	GP	Anchorage	200	12B / C	12.0		43,782	3,092	0	37,131	84,005	51,243
06-9311	Social Services Associate	FT	A	GP	Anchorage	200	12D / E	12.0		47,139	3,329	0	38,515	88,983	54,280
06-9312	Social Services Associate	FT	A	GP	Anchorage	200	12F	12.0		49,706	3,510	0	39,574	92,790	56,602

Note: If a position is split, an asterisk (*) will appear in the Split/Count column. If the split position is also counted in the component, two asterisks (**) will appear in this column. [No valid job title] appearing in the Job Class Title indicates that the PCN has an invalid class code or invalid range for the class code effective date of this scenario.

Personal Services Expenditure Detail
Department of Family and Community Services

Scenario: FY2025 Governor (20959)
Component: Front Line Social Workers (3318)
RDU: Children's Services (486)

PCN	Job Class Title	Time Status	Retire Code	Barg Unit	Location	Salary Sched	Range / Step	Comp Months	Split / Count	Annual Salaries	COLA	Premium Pay	Annual Benefits	Total Costs	UGF Amount
06-9313	Office Assistant 2	FT	A	GP	Anchorage	200	10B / C	9.0		29,952	2,115	0	26,658	58,725	35,822
06-9315	Pro Svcs Sp 2	FT	A	GP	Anchorage	200	17B / C	9.0		47,707	3,369	0	33,982	85,058	51,885
06-9316	Office Assistant 2	FT	A	GP	Anchorage	200	10D / E	12.0		42,215	2,981	0	36,484	81,680	49,825
06-9318	Ss Prog Coord	FT	A	GP	Anchorage	200	20G / J	12.0		91,124	6,436	0	56,659	154,219	94,074
06-9319	Ss Prog Coord	FT	A	GP	Anchorage	200	20M	12.0		102,005	7,204	0	61,148	170,357	103,918
06-9320	Ss Prog Coord	FT	A	GP	Anchorage	200	20A / B	9.0		56,613	3,998	0	37,656	98,267	59,943
06-9321	Social Services Associate	FT	A	GP	Fairbanks	203	12C / D	12.0		46,889	3,312	0	38,412	88,613	54,054
06-9322	Pro Svcs Sp 3	FT	A	GP	Anchorage	200	19D / E	12.0		77,784	5,869	5,311	53,347	142,311	86,810
06-9323	Pro Svcs Sp 2	FT	A	GP	Ketchikan	200	17A / B	9.0		46,010	3,249	0	33,282	82,541	50,350
06-9324	Pro Svcs Sp 3	FT	A	GP	Anchorage	200	19D / E	12.0		75,584	5,338	0	50,249	131,171	80,014
06-9325	Pro Svcs Sp 3	FT	A	GP	Anchorage	200	19C / D	12.0		73,735	5,208	0	49,486	128,429	78,342
06-9326	Pro Svcs Sp 2	FT	A	GP	Anchorage	200	17C / D	12.0		65,702	4,640	0	46,173	116,515	71,074
06-9327	Pro Svcs Sp 2	FT	P	GP	Anchorage	200	17J / K	12.0		78,172	5,521	0	51,317	135,010	82,356
06-9328	Accounting Technician 1	FT	A	GP	Wasilla	200	12C / D	12.0		46,141	3,332	1,039	38,532	89,044	54,317
06-9329	Pro Svcs Sp 2	FT	A	GP	Wasilla	200	17A / B	12.0		59,815	5,062	11,866	48,639	125,382	76,483
06-9330	Pro Svcs Sp 2	FT	A	GP	Wasilla	200	17G	12.0		72,794	5,734	8,399	52,563	139,490	85,089
06-9331	Pro Svcs Sp 2	FT	A	GP	Wasilla	200	17B / C	12.0		61,536	4,346	0	44,454	110,336	67,305
06-9332	C/C Lic Spec 1	FT	A	GP	Wasilla	200	16J / K	12.0		71,900	5,078	0	48,729	125,707	76,681
06-9333	C/C Lic Spec 1	FT	A	GP	Wasilla	200	16C / D	12.0		61,123	4,477	2,273	45,221	113,094	68,987
06-9334	Pro Svcs Sp 3	FT	A	GP	Wasilla	200	19G	12.0		83,187	5,875	0	53,385	142,447	86,893
06-9335	Pro Svcs Sp 2	FT	A	GP	Anchorage	200	17B / C	9.0		47,669	3,867	7,078	36,886	95,500	58,255
06-9336	Pro Svcs Sp 3	FT	A	GP	Anchorage	200	19G / J	12.0		84,711	5,983	0	54,014	144,708	88,272
06-9337	C/C Lic Spec 1	FT	A	GP	Anchorage	200	16B / C	12.0		58,035	4,099	0	43,010	105,144	64,138
06-9338	Pro Svcs Sp 1	FT	A	GP	Fairbanks	203	15A / B	12.0		54,431	3,844	0	41,523	99,798	60,877
06-9339	Eligibility Technician 2	FT	A	GP	Anchorage	200	14F	12.0		57,272	4,045	0	42,695	104,012	63,447
06-9341	Pro Svcs Sp 2	FT	A	GP	Anchorage	200	17C	9.0		47,707	3,369	0	33,982	85,058	51,885
06-9342	Pro Svcs Sp 1	FT	A	GP	Kenai	200	15A / B	12.0		51,769	4,214	7,905	43,686	107,574	65,620
06-9343	Pro Svcs Sp 1	FT	A	GP	Kenai	200	15A / B	9.0		39,985	2,824	0	30,797	73,606	44,900
06-9344	Pro Svcs Sp 1	FT	A	GP	Kenai	200	15B	9.0		39,985	2,969	2,050	31,642	76,646	46,754
06-9345	Pro Svcs Sp 3	FT	A	GP	Wasilla	200	19B / C	12.0		72,194	5,673	8,131	52,205	138,203	84,304
06-9346	Pro Svcs Sp 3	FT	A	GP	Wasilla	200	19G	12.0		83,187	6,101	3,199	54,705	147,192	89,787
06-9347	Pro Svcs Sp 1	FT	A	GP	Wasilla	200	15B / C	12.0		54,606	4,436	8,202	44,979	112,223	68,456
06-9348	Pro Svcs Sp 3	FT	A	GP	Wasilla	200	19G / J	12.0		83,877	6,898	13,798	59,362	163,935	100,000
06-9349	Pro Svcs Sp 2	FT	A	GP	Wasilla	200	17B / C	12.0		62,063	4,883	7,078	47,591	121,615	74,185
06-9350	Pro Svcs Sp 2	FT	A	GP	Wasilla	200	17E / F	12.0		69,490	5,533	8,859	51,390	135,272	82,516
06-9351	Pro Svcs Sp 1	FT	A	GP	Wasilla	200	15A / B	12.0		53,313	3,765	0	41,062	98,140	59,865
06-9352	Pro Svcs Sp 2	FT	A	GP	Wasilla	200	17D / E	12.0		67,454	5,032	3,799	48,463	124,748	76,096
06-9353	Pro Svcs Sp 2	FT	A	GP	Wasilla	200	17C / D	12.0		64,058	4,524	0	45,495	114,077	69,587

Note: If a position is split, an asterisk (*) will appear in the Split/Count column. If the split position is also counted in the component, two asterisks (**) will appear in this column. [No valid job title] appearing in the Job Class Title indicates that the PCN has an invalid class code or invalid range for the class code effective date of this scenario.

Personal Services Expenditure Detail
Department of Family and Community Services

Scenario: FY2025 Governor (20959)
Component: Front Line Social Workers (3318)
RDU: Children's Services (486)

PCN	Job Class Title	Time Status	Retire Code	Barg Unit	Location	Salary Sched	Range / Step	Comp Months	Split / Count	Annual Salaries	COLA	Premium Pay	Annual Benefits	Total Costs	UGF Amount
06-9354	Pro Svcs Sp 1	FT	A	GP	Wasilla	200	15B / C	9.0		41,135	2,905	0	31,271	75,311	45,940
06-9355	Pro Svcs Sp 2	FT	A	GP	Wasilla	200	17A / B	12.0		60,506	4,755	6,819	46,842	118,922	72,542
06-9356	Pro Svcs Sp 1	FT	A	GP	Kotzebue	260	15C	9.0		66,251	4,679	0	41,632	112,562	68,663
06-9357	Pro Svcs Sp 3	FT	A	GP	Wasilla	200	19D / E	12.0		76,654	5,824	5,806	53,085	141,369	86,235
06-9358	Pro Svcs Sp 4	FT	A	SS	Wasilla	200	20D / E	12.0		87,167	0	0	59,009	146,176	89,167
06-9359	Pro Svcs Sp 4	FT	A	SS	Wasilla	200	20K / L	12.0		98,091	0	0	63,515	161,606	98,580
06-9360	Pro Svcs Sp 3	FT	A	GP	Fairbanks	203	19C	12.0		74,978	5,295	0	49,999	130,272	79,466
06-9361	Social Services Associate	FT	A	GP	Wasilla	200	12B / C	12.0		44,961	3,317	2,012	38,447	88,737	54,130
06-9362	Accounting Technician 1	FT	A	GP	Wasilla	200	12C / D	12.0		46,164	3,334	1,039	38,542	89,079	54,338
06-9363	Social Services Associate	FT	A	GP	Wasilla	200	12F / G	12.0		49,775	3,650	1,911	40,391	95,727	58,394
06-9364	Social Services Associate	FT	A	GP	Wasilla	200	12B / C	12.0		44,973	3,295	1,677	38,314	88,259	53,838
06-9365	Pro Svcs Sp 3	FT	A	GP	Anchorage	200	19B / C	12.0		72,794	5,141	0	49,098	127,033	77,490
06-9366	Pro Svcs Sp 2	FT	A	GP	Anchorage	200	17B / C	9.0		47,707	3,369	0	33,982	85,058	51,885
06-9367	Pro Svcs Sp 3	FT	A	GP	Anchorage	200	19F / G	12.0		82,266	5,810	0	53,005	141,081	86,059
06-9368	Pro Svcs Sp 1	FT	A	GP	Fairbanks	203	15A / B	12.0		53,404	3,772	0	41,100	98,276	59,948
06-9369	Pro Svcs Sp 3	FT	A	GP	Anchorage	200	19B / C	12.0		71,730	5,066	0	48,659	125,455	76,528
06-9370	Pro Svcs Sp 2	FT	A	GP	Anchorage	200	17B / C	9.0		47,707	4,060	9,786	38,019	99,572	60,739
06-9371	Pro Svcs Sp 3	FT	A	GP	Juneau	205	19B / C	9.0		56,721	4,408	5,692	40,048	106,869	65,190
06-9373	Accounting Technician 1	FT	A	GP	Wasilla	200	12A / B	12.0		43,341	3,107	650	37,217	84,315	51,432
06-9374	Pro Svcs Sp 2	FT	A	GP	Juneau	205	17C / D	12.0		68,518	4,839	0	47,334	120,691	30,173
06-9380	Pro Svcs Sp 1	FT	A	GP	Anchorage	200	15B / C	12.0		54,684	3,862	0	41,628	100,174	61,106
06-9381	Pro Svcs Sp 2	FT	A	GP	Anchorage	200	17C / D	12.0		65,179	4,603	0	45,957	115,739	70,601
06-9382	Pro Svcs Sp 2	FT	A	GP	Anchorage	200	17B / C	9.0		47,707	3,369	0	33,982	85,058	51,885
06-9383	Program Coordinator 2	FT	A	GP	Anchorage	200	20F	12.0		86,229	6,090	0	54,640	146,959	89,645
06-9384	Office Assistant 2	FT	A	GP	Wasilla	200	10B	9.0		28,972	2,151	1,485	26,866	59,474	36,279
06-9385	Office Assistant 2	FT	A	GP	Anchorage	200	10B / C	12.0		39,501	2,790	0	35,365	77,656	47,370
06-9386	Social Services Associate	FT	A	GP	Valdez	211	12E / F	12.0		55,090	3,891	0	41,795	100,776	61,473
06-9387	Social Services Associate	FT	A	GP	Kenai	200	12D / E	12.0		47,290	3,340	0	38,578	89,208	54,417
06-9388	Social Services Associate	FT	A	GP	Petersburg	200	12C / D	12.0		46,430	3,279	0	38,223	87,932	53,639
06-9389	Pro Svcs Sp 2	FT	A	GP	Kodiak	211	17B / C	12.0		70,610	5,249	3,715	49,730	129,304	78,875
06-9390	Pro Svcs Sp 1	FT	A	GP	Anchorage	200	15A / B	9.0		39,985	3,403	8,202	34,180	85,770	52,320
06-9391	Pro Svcs Sp 4	FT	A	SS	Anchorage	200	20C / D	9.0		62,988	0	0	43,272	106,260	64,819
06-9392	Pro Svcs Sp 4	FT	A	SS	Anchorage	200	20C / D	12.0		83,380	0	0	57,447	140,827	85,905
06-9393	Pro Svcs Sp 4	FT	A	SS	Anchorage	200	20B / C	9.0		61,211	0	0	42,539	103,750	63,288
06-9394	Pro Svcs Sp 2	FT	A	GP	Fairbanks	203	17A / B	12.0		62,950	4,446	0	45,038	112,434	68,585
06-9395	Pro Svcs Sp 2	FT	A	GP	Fairbanks	203	17C / D	12.0		67,744	4,784	0	47,015	119,543	72,921
06-9396	Pro Svcs Sp 1	FT	A	GP	Fairbanks	203	15C / D	9.0		44,241	3,125	0	32,552	79,918	48,750
06-9397	Pro Svcs Sp 1	FT	A	GP	Kotzebue	260	15C	9.0		66,251	4,679	0	41,632	112,562	68,663

Note: If a position is split, an asterisk (*) will appear in the Split/Count column. If the split position is also counted in the component, two asterisks (**) will appear in this column. [No valid job title] appearing in the Job Class Title indicates that the PCN has an invalid class code or invalid range for the class code effective date of this scenario.

Personal Services Expenditure Detail
Department of Family and Community Services

Scenario: FY2025 Governor (20959)
Component: Front Line Social Workers (3318)
RDU: Children's Services (486)

PCN	Job Class Title	Time Status	Retire Code	Barg Unit	Location	Salary Sched	Range / Step	Comp Months	Split / Count	Annual Salaries	COLA	Premium Pay	Annual Benefits	Total Costs	UGF Amount
06-9398	Pro Svcs Sp 1	FT	A	GP	Nome	237	15A / B	12.0		73,047	5,556	5,619	51,520	135,742	82,803
06-9399	Pro Svcs Sp 1	FT	A	GP	Craig	200	15C / D	9.0		42,954	3,049	220	32,112	78,335	47,784
06-N12024	Pro Svcs Sp 2	NP	N	GP	Anchorage	200	17A	12.0		59,105	3,383	0	8,564	71,052	43,342
06-N17018	Pro Svcs Sp 1	NP	N	GP	Fairbanks	203	15A	9.0		39,692	2,226	0	4,834	46,752	28,519
26-?002	Social Services Associate	FT	A	GP	Anchorage	200	12A / B	9.0		32,702	2,310	0	27,793	62,805	38,311
26-?003	Social Services Associate	FT	A	GP	Anchorage	200	12A / B	9.0		32,702	2,310	0	27,793	62,805	35,171
26-?004	Social Services Associate	FT	A	GP	Anchorage	200	12A / B	9.0		32,702	2,310	0	27,793	62,805	38,311
26-?005	Social Services Associate	FT	A	GP	Anchorage	200	12A / B	9.0		32,702	2,310	0	27,793	62,805	38,311
26-?006	Social Services Associate	FT	A	GP	Anchorage	200	12A / B	9.0		32,702	2,310	0	27,793	62,805	38,311
26-?007	Social Services Associate	FT	A	GP	Fairbanks	203	12A / B	9.0		33,681	2,379	0	28,196	64,256	39,196
26-?008	Social Services Associate	FT	A	GP	Fairbanks	203	12A / B	9.0		33,681	2,379	0	28,196	64,256	39,196
26-?009	Social Services Associate	FT	A	GP	Fairbanks	203	12A / B	9.0		33,681	2,379	0	28,196	64,256	39,196
26-?010	Social Services Associate	FT	A	GP	Fairbanks	203	12A / B	9.0		33,681	2,379	0	28,196	64,256	39,196
26-?011	Social Services Associate	FT	A	GP	Wasilla	200	12A / B	12.0		43,602	3,198	1,677	37,748	86,225	52,597
26-?012	Social Services Associate	FT	A	GP	Wasilla	200	12A / B	12.0		43,602	3,198	1,677	37,748	86,225	52,597
26-?013	Social Services Associate	FT	A	GP	Juneau	205	12A / B	9.0		34,340	2,425	0	28,468	65,233	39,792
26-?014	Social Services Associate	FT	A	GP	Bethel	250	12A / B	9.0		49,052	3,464	0	34,537	87,053	53,102
26-?015	Social Services Associate	FT	A	GP	Kenai	200	12A / B	12.0		43,602	3,198	1,677	37,748	86,225	52,597
26-?016	Social Services Associate	FT	A	GP	Nome	237	12A / B	9.0		44,796	3,164	0	32,781	80,741	49,252
26-?017	Social Services Associate	FT	A	GP	Kotzebue	260	12A / B	9.0		52,328	3,696	0	35,888	91,912	56,066
26-?018	Pro Svcs Sp 4	NP	A	SS	Anchorage	200	20A	6.0		38,282	0	0	4,663	42,945	26,197
26-?019	Pro Svcs Sp 4	NP	A	SS	Juneau	205	20A / A	5.0		33,497	0	0	4,080	37,577	22,922
26-?020	Pro Svcs Sp 4	NP	A	SS	Fairbanks	203	20C / D	5.0		36,478	0	0	4,443	40,921	24,962
26-?021	Pro Svcs Sp 4	NP	A	SS	Wasilla	200	20A	5.0		31,902	0	0	3,886	35,788	21,831
26-?022	Mental Health Clinician 4	FT	A	GP	Anchorage	200	23A / B	9.0		69,118	4,881	0	42,814	116,813	71,256
26-?028	Social Services Associate	FT	A	GP	Anchorage	200	12A / B	9.0		32,702	2,310	0	27,793	62,805	38,311
26-?031	Office Assistant 3	FT	A	GP	Anchorage	200	11A / B	9.0		30,815	2,176	0	27,014	60,005	36,603
26-?032	Office Assistant 3	FT	A	GP	Wasilla	200	11A / B	9.0		30,815	2,176	0	27,014	60,005	36,603

Note: If a position is split, an asterisk (*) will appear in the Split/Count column. If the split position is also counted in the component, two asterisks (**) will appear in this column. [No valid job title] appearing in the Job Class Title indicates that the PCN has an invalid class code or invalid range for the class code effective date of this scenario.

Personal Services Expenditure Detail
Department of Family and Community Services

Scenario: FY2025 Governor (20959)
Component: Front Line Social Workers (3318)
RDU: Children's Services (486)

PCN	Job Class Title	Time Status	Retire Code	Barg Unit	Location	Salary Sched	Range / Step	Comp Months	Split / Count	Annual Salaries	COLA	Premium Pay	Annual Benefits	Total Costs	UGF Amount
		Total Positions	New	Deleted										Total Salary Costs:	36,389,228
														Total COLA:	2,018,279
	Full Time Positions:	545	0	0										Total Premium Pay:	1,067,576
	Part Time Positions:	0	0	0										Total Benefits:	25,569,565
	Non Permanent Positions:	6	0	0											
	Positions in Component:	551	0	0											
	Total Component Months:	6,222.0													
														Total Pre-Vacancy:	65,044,648
														Minus Vacancy Adjustment of 7.00%:	(4,553,125)
														Total Post-Vacancy:	60,491,523
														Plus Lump Sum Premium Pay:	0
														Personal Services Line 100:	60,491,523

PCN Funding Sources:	Pre-Vacancy	Post-Vacancy	Percent
1002 Federal Receipts	25,314,463	23,542,451	38.92%
1003 General Fund Match	39,584,275	36,813,375	60.86%
1004 Unrestricted General Fund Receipts	35,171	32,709	0.05%
1007 Interagency Receipts	32,290	30,030	0.05%
1108 Statutory Designated Program Receipts	78,449	72,958	0.12%
Total PCN Funding:	65,044,648	60,491,523	100.00%

Note: If a position is split, an asterisk (*) will appear in the Split/Count column. If the split position is also counted in the component, two asterisks (**) will appear in this column. [No valid job title] appearing in the Job Class Title indicates that the PCN has an invalid class code or invalid range for the class code effective date of this scenario.

Department of Family and Community Services
 Office of Children's Services
 Front Line Social Workers
 Anchorage Regional Office

Protective Services
 Manager 2
 06-4506
 R22 CL
 Anchorage

Family Services

Administrative Support Unit

Administrative Officer 2
 06-3586
 R19 CL
 Anchorage

Protective Services Specialist 2
 06-N12024
 R17 CL
 Anchorage

Protective Services Specialist 3
 06-4504
 R19 CL
 Anchorage

Protective Services Manager 1
 06-4633
 R21 CL
 Anchorage

Social Services Associate
 26-1020
 R12 CL
 Anchorage

Office Assistant 2
 06-3082
 R10 CL
 Anchorage

Social Services Program Coordinator
 06-3944
 R20 CL
 Juneau

Administrative Assistant 2
 06-4640
 R14 CL
 Anchorage

Accounting Technician 1
 06-3063
 R12 CL
 Anchorage

Administrative Assistant 2
 06-3161
 R14 CL
 Anchorage

Office Assistant 3
 26-1021
 R11 CL
 Anchorage

Protective Services Specialist 4
 06-9393
 R20 CL
 Anchorage

Protective Services Specialist 4
 06-3928
 R20 CL
 Anchorage

Protective Services Specialist 4
 06-3125
 R20 CL
 Anchorage

Protective Services Specialist 4
 06-4626
 R20 CL
 Anchorage

Protective Services Specialist 4
 06-3018
 R20 CL
 Anchorage

Office Assistant 3
 06-4670
 R11 CL
 Anchorage

Office Assistant 2
 06-9385
 R10 CL
 Anchorage

Office Assistant 2
 06-3156
 R10 CL
 Anchorage

Protective Services Specialist 2
 06-4629
 R17 CL
 Anchorage

Protective Services Specialist 3
 06-9153
 R19 CL
 Anchorage

Protective Services Specialist 2
 06-9271
 R17 CL
 Anchorage

Protective Services Specialist 3
 06-3417
 R19 CL
 Anchorage

Protective Services Specialist 3
 06-3712
 R19 CL
 Anchorage

Office Assistant 1
 06-3863
 R8 CL
 Anchorage

Office Assistant 1
 06-3924
 R8 CL
 Anchorage

Office Assistant 2
 06-3899
 R10 CL
 Anchorage

Protective Services Specialist 2
 06-9315
 R17 CL
 Anchorage

Protective Services Specialist 2
 06-3432
 R17 CL
 Anchorage

Protective Services Specialist 2
 06-9155
 R17 CL
 Anchorage

Protective Services Specialist 3
 06-4547
 R19 CL
 Anchorage

Protective Services Specialist 2
 06-9335
 R17 CL
 Anchorage

Office Assistant 1
 06-3964
 R8 CL
 Anchorage

Office Assistant 1
 06-3921
 R8 CL
 Anchorage

Office Assistant 2
 06-4607
 R10 CL
 Anchorage

Protective Services Specialist 2
 06-3425
 R17 CL
 Anchorage

Protective Services Specialist 1
 06-9279
 R15 CL
 Anchorage

Protective Services Specialist 2
 06-3931
 R17 CL
 Anchorage

Protective Services Specialist 3
 06-4543
 R19 CL
 Anchorage

Protective Services Specialist 2
 06-3374
 R17 CL
 Anchorage

Office Assistant 1
 06-4660
 R8 CL
 Anchorage

Office Assistant 1
 06-3035
 R8 CL
 Anchorage

Office Assistant 2
 26-1027
 R10 CL
 Anchorage

Protective Services Specialist 1
 06-9154
 R15 CL
 Anchorage

Protective Services Specialist 2
 06-3428
 R17 CL
 Anchorage

Protective Services Specialist 2
 06-4628
 R17 CL
 Anchorage

Protective Services Specialist 1
 06-3100
 R15 CL
 Anchorage

Protective Services Specialist 2
 06-3870
 R17 CL
 Anchorage

Office Assistant 1
 06-3923
 R8 CL
 Anchorage

Office Assistant 1
 06-9286
 R8 CL
 Anchorage

Protective Services Specialist 1
 06-3764
 R15 CL
 Anchorage

Social Services Associate
 06-3390
 R12 CL
 Anchorage

Protective Services Specialist 2
 06-4627
 R17 CL
 Anchorage

Protective Services Specialist 2
 06-9370
 R17 CL
 Anchorage

Protective Services Specialist 2
 06-3890
 R17 CL
 Anchorage

Social Services Associate
 26-1010
 R12 CL
 Anchorage

Social Services Associate
 06-3938
 R12 CL
 Anchorage

Social Services Associate
 26-1013
 R12 CL
 Anchorage

Social Services Associate
 06-4622
 R12 CL
 Anchorage

Department of Family and Community Services
 Office of Children's Services
 Front Line Social Workers
 Anchorage Regional Office (cont.)

Protective Services
 Manager 2
 06-4506
 R22 CL
 Anchorage

Protective Services
 Manager 1
 06-3878
 R21 CL
 Anchorage

Family Services

ASPIN Unit

Protective Services Specialist
 3
 06-4636
 R19 CL
 Juneau

Administrative Assistant 2
 06-3747
 R14 CL
 Anchorage

Protective Services Specialist 4
 06-3891
 R20 CL
 Anchorage

Protective Services Specialist 4
 06-9392
 R20 CL
 Anchorage

Protective Services Specialist 4
 06-3430
 R20 CL
 Anchorage

Protective Services Specialist 4
 06-4544
 R20 CL
 Anchorage

Team Decision Making

Project Assistant
 06-4624
 R16 CL
 Anchorage

Social Services Associate
 06-3942
 R12 CL
 Anchorage

Protective Services Specialist 3
 06-9367
 R19 CL
 Anchorage

Protective Services Specialist 2
 06-3932
 R17 CL
 Anchorage

Protective Services Specialist 3
 06-4541
 R19 CL
 Anchorage

Protective Services Specialist 2
 06-9366
 R17 CL
 Anchorage

Protective Services Specialist 3
 06-9133
 R19 CL
 Anchorage

Social Services Associate
 06-4671
 R12 CL
 Anchorage

Social Services Associate
 06-3939
 R12 CL
 Anchorage

Protective Services Specialist 3
 06-9365
 R19 CL
 Anchorage

Protective Services Specialist 2
 06-9272
 R17 CL
 Anchorage

Protective Services Specialist 3
 06-9196
 R19 CL
 Anchorage

Protective Services Specialist 2
 06-3409
 R17 CL
 Anchorage

Protective Services Specialist 3
 06-9134
 R19 CL
 Anchorage

Social Services Associate
 06-4623
 R12 CL
 Anchorage

Social Services Associate
 06-4546
 R12 CL
 Anchorage

Protective Services Specialist 3
 06-3057
 R19 CL
 Anchorage

Protective Services Specialist 2
 06-9267
 R17 CL
 Anchorage

Protective Services Specialist 3
 06-9280
 R19 CL
 Anchorage

Protective Services Specialist 2
 06-3098
 R17 CL
 Anchorage

Protective Services Specialist 3
 06-9135
 R19 CL
 Anchorage

Social Services Associate
 06-4621
 R12 CL
 Anchorage

Social Services Associate
 06-3748
 R12 CL
 Anchorage

Protective Services Specialist 2
 06-3929
 R17 CL
 Anchorage

Protective Services Specialist 1
 06-3022
 R15 CL
 Anchorage

Protective Services Specialist 2
 06-9270
 R17 CL
 Anchorage

Protective Services Specialist 1
 06-9390
 R15 CL
 Anchorage

Office Assistant 2
 06-9131
 R10 CL
 Anchorage

Protective Services Specialist 1
 06-9282
 R15 CL
 Anchorage

Protective Services Specialist 1
 06-9194
 R15 CL
 Anchorage

Protective Services Specialist 2
 06-3922
 R17 CL
 Anchorage

Social Services Associate
 26-1011
 R12 CL
 Anchorage

Social Services Associate
 26-1012
 R12 CL
 Anchorage

Social Services Associate
 06-9309
 R12 CL
 Anchorage

Social Services Associate
 26-1016
 R12 CL
 Anchorage

Protective Services Specialist 2
 06-3927
 R17 CL
 Anchorage

Department of Family and Community Services
 Office of Children's Services
 Front Line Social Workers
 Anchorage Regional Office (cont.)

Protective Services
 Manager 2
 06-4506
 R22 CL
 Anchorage

Protective Services
 Manager 1
 06-3085
 R21 CL
 Anchorage

Initial Assessments



ORCA Unit

Data Processing
 Manager 1
 06-9304
 R22 CL
 Anchorage

Social Services
 Program
 Officer
 06-9320
 R21 CL
 Anchorage

Social Services
 Program
 Coordinator
 06-9171
 R20 CL
 Anchorage

Protective Services
 Specialist 2
 06-3926
 R17 CL
 Anchorage

Information System
 Coordinator
 06-3934
 R18 CL
 Anchorage

Social Services
 Program
 Coordinator
 06-9168
 R20 CL
 Anchorage

Eligibility Unit

Social Services
 Program Coordinator
 06-3075
 R20 CL
 Juneau

Eligibility
 Technician 4
 06-8104
 R17 CL
 Anchorage

Eligibility
 Technician 2
 06-4645
 R14 CL
 Anchorage

Eligibility
 Technician 2
 06-9339
 R14 CL
 Anchorage

Eligibility
 Technician 2
 06-8149
 R14 CL
 Anchorage

Eligibility
 Technician 2
 06-3026
 R14 CL
 Anchorage

Eligibility
 Technician 2
 06-3187
 R14 CL
 Anchorage

Department of Family and Community Services
 Office of Children's Services
 Front Line Social Workers
 Anchorage Regional Office (cont.)

Social Services
 Program Administrator
 06-4502
 R23 CL
 Anchorage

Quality Assurance Unit

Protective Services
 Manager 1
 06-3792
 R21 CL
 Anchorage

Centralized Intake

Mentor Team

Social Services
 Program Officer
 06-3421
 R21 CL
 Anchorage

Protective Services
 Specialist 4
 06-3879
 R20 CL
 Anchorage

Protective Services
 Specialist 4
 06-3715
 R20 CL
 Anchorage

Protective Services
 Specialist 4
 06-9290
 R20 CL
 Anchorage

Protective Services
 Specialist 4
 06-9162
 R20 CL
 Anchorage

Protective Services
 Specialist 4
 06-9167
 R20 CL
 Anchorage

Social Services
 Program Coordinator
 06-3937
 R20 CL
 Anchorage

Social Services
 Program Coordinator
 06-9318
 R20 CL
 Anchorage

Protective Services
 Specialist 2
 06-3959
 R17 CL
 Anchorage

Protective Services
 Specialist 2
 06-3960
 R17 CL
 Anchorage

Protective Services
 Specialist 2
 06-3270
 R17 CL
 Anchorage

Protective Services
 Specialist 2
 06-9161
 R17 CL
 Anchorage

Protective Services
 Specialist 3
 06-9357
 R19 CL
 Wasilla

Protective Services
 Specialist 3
 06-9156
 R19 CL
 Anchorage

Social Services
 Program Coordinator
 06-9145
 R20 CL
 Anchorage

Social Services
 Program Coordinator
 06-9319
 R20 CL
 Anchorage

Protective Services
 Specialist 2
 06-9193
 R17 CL
 Anchorage

Protective Services
 Specialist 2
 06-3269
 R17 CL
 Anchorage

Protective Services
 Specialist 2
 06-3045
 R17 CL
 Anchorage

Protective Services
 Specialist 2
 06-3427
 R17 CL
 Anchorage

Protective Services
 Specialist 3
 06-9369
 R19 CL
 Anchorage

Protective Services
 Specialist 3
 06-9371
 R19 CL
 Juneau

Research Analyst 3
 06-1351
 R18 CL
 Anchorage

Office Assistant 2
 06-9317
 R10 CL
 Anchorage

Protective Services
 Specialist 2
 06-3021
 R17 CL
 Anchorage

Protective Services
 Specialist 2
 06-4540
 R17 CL
 Anchorage

Protective Services
 Specialist 2
 06-3185
 R17 CL
 Anchorage

Protective Services
 Specialist 2
 06-3746
 R17 CL
 Anchorage

Protective Services
 Specialist 3
 06-9182
 R19 CL
 Anchorage

Protective Services
 Specialist 3
 06-4550
 R19 CL
 Wasilla

Protective Services
 Specialist 2
 06-4513
 R17 CL
 Anchorage

Protective Services
 Specialist 2
 06-3875
 R17 CL
 Anchorage

Protective Services
 Specialist 2
 06-9292
 R17 CL
 Fairbanks

Protective Services
 Specialist 2
 06-3067
 R17 CL
 Anchorage

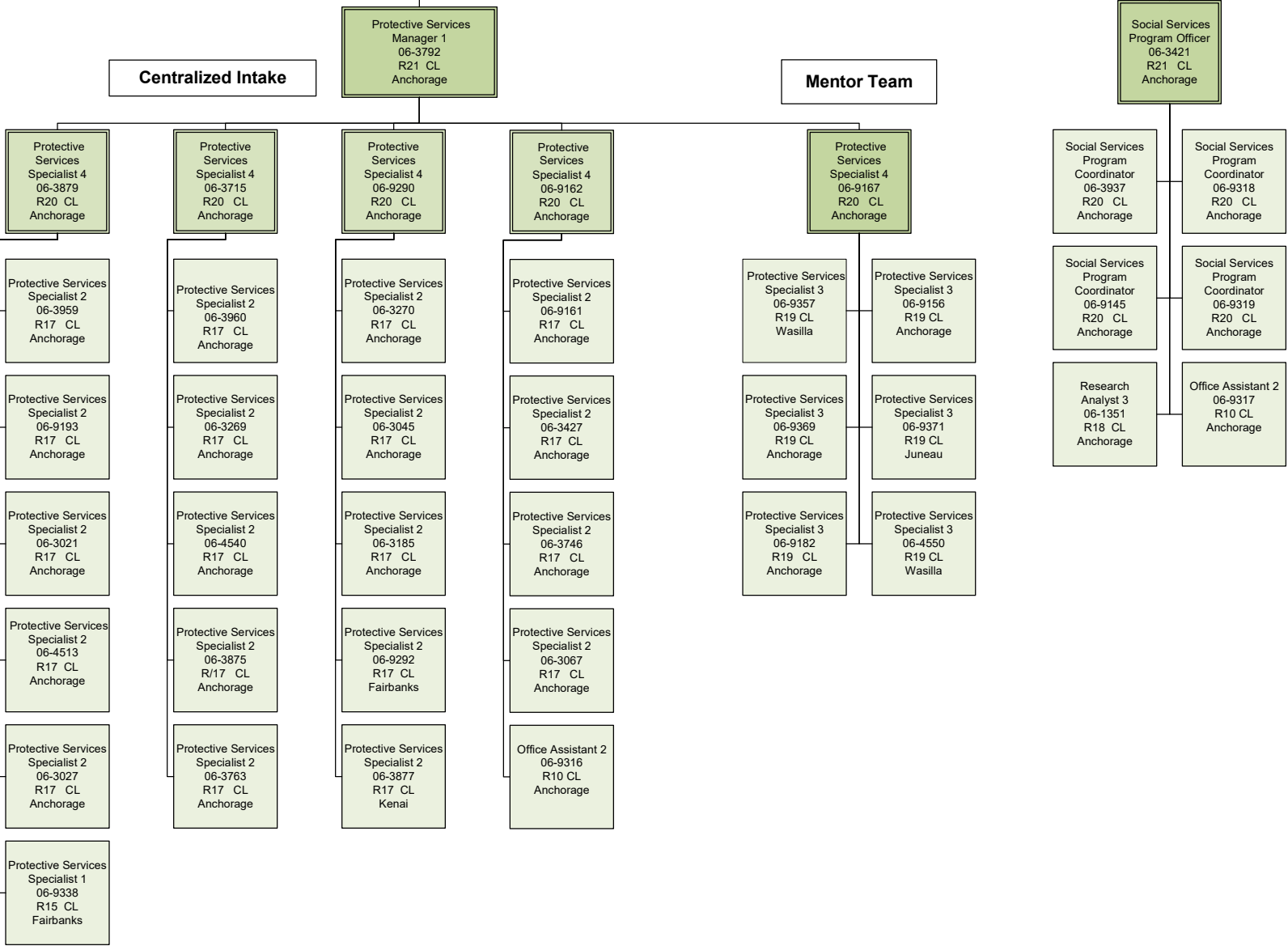
Protective Services
 Specialist 2
 06-3027
 R17 CL
 Anchorage

Protective Services
 Specialist 2
 06-3763
 R17 CL
 Anchorage

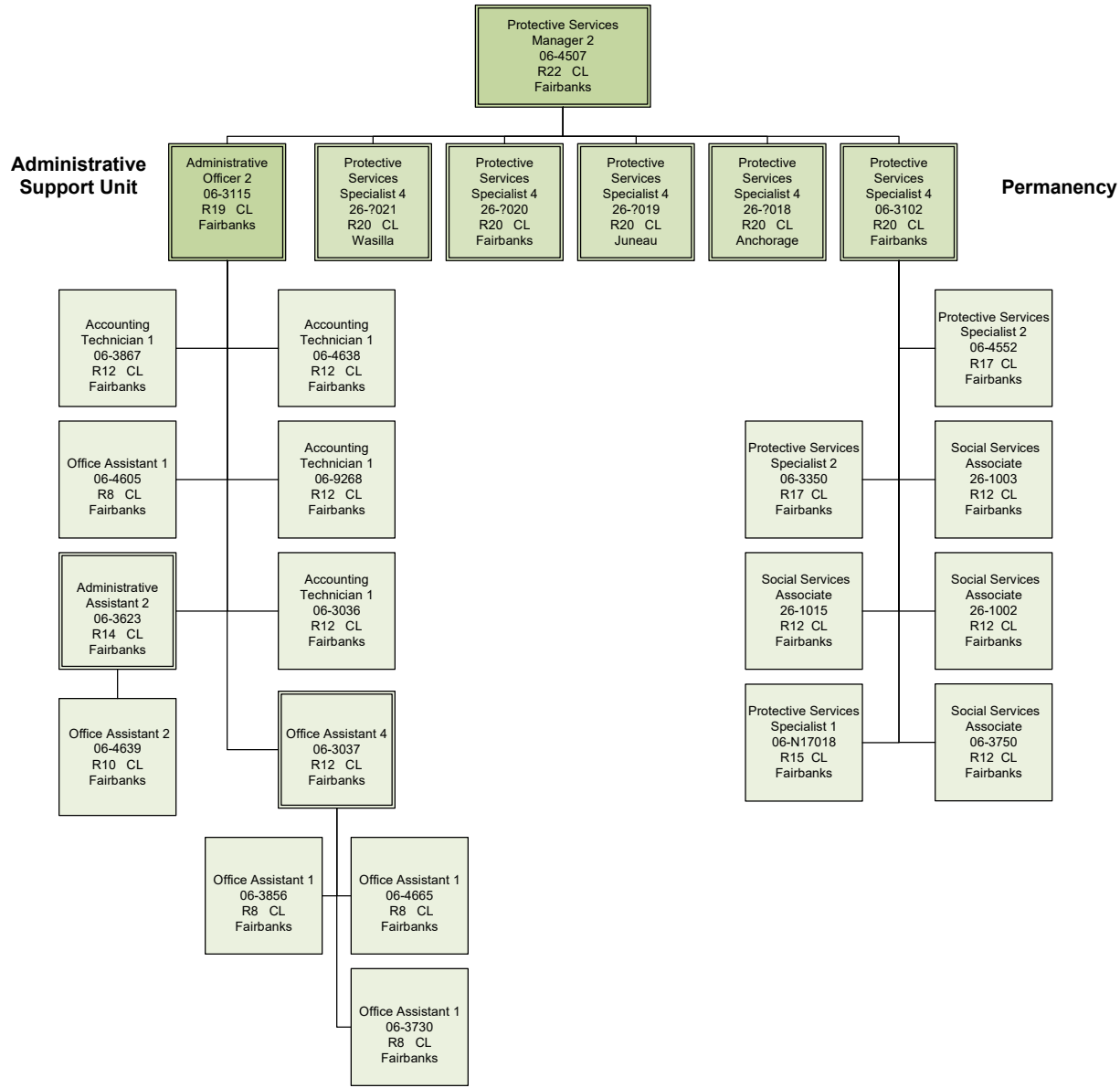
Protective Services
 Specialist 2
 06-3877
 R17 CL
 Kenai

Office Assistant 2
 06-9316
 R10 CL
 Anchorage

Protective Services
 Specialist 1
 06-9338
 R15 CL
 Fairbanks



Department of Family and Community Services
 Office of Children's Services
 Front Line Social Workers
 Northern Regional Office



Department of Family and Community Services
 Office of Children's Services
 Front Line Social Workers
 Northern Regional Office (cont.)

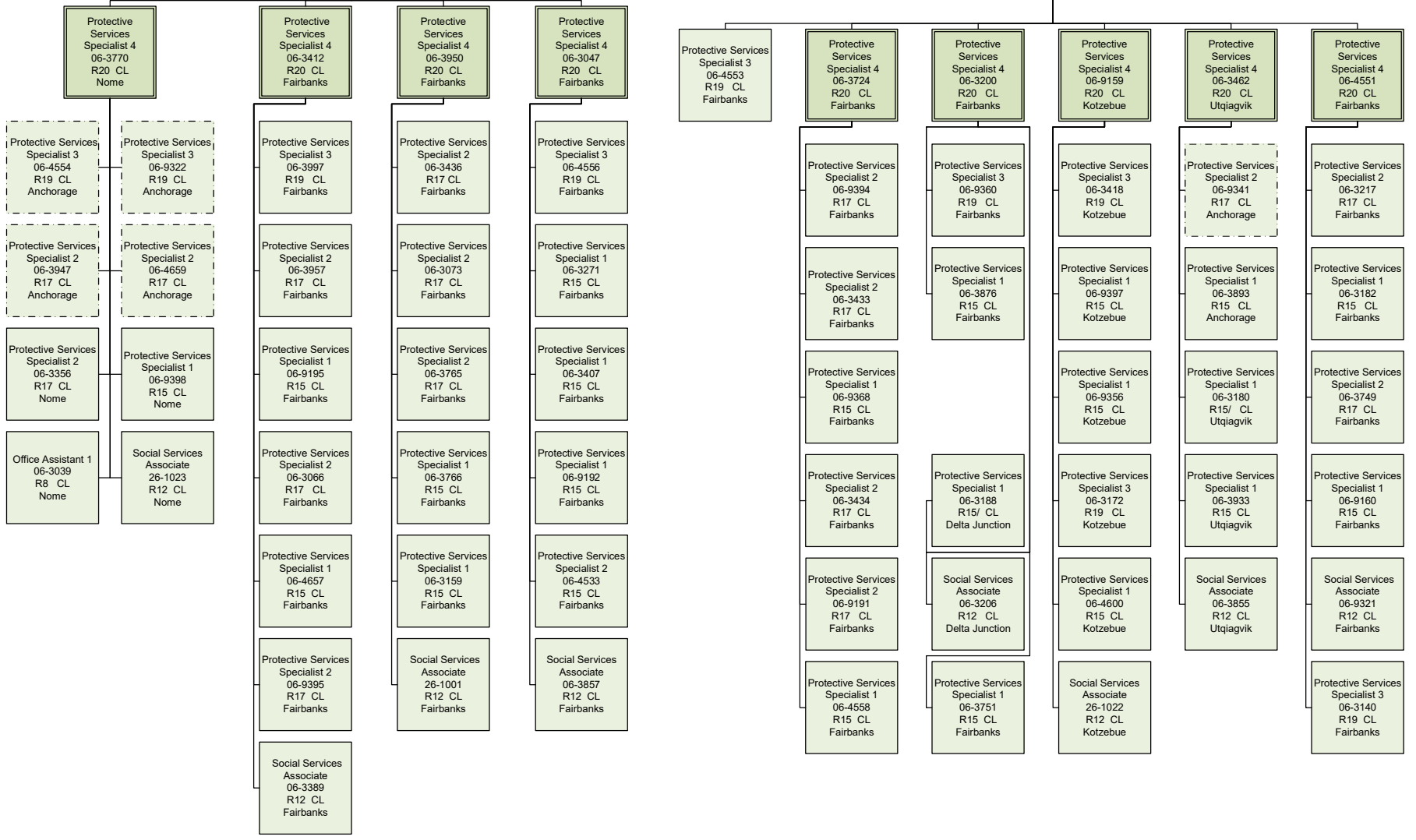
Protective Services
 Manager 2
 06-4507
 R22 CL
 Fairbanks

Protective Services
 Manager 1
 06-3016
 R21 CL
 Fairbanks

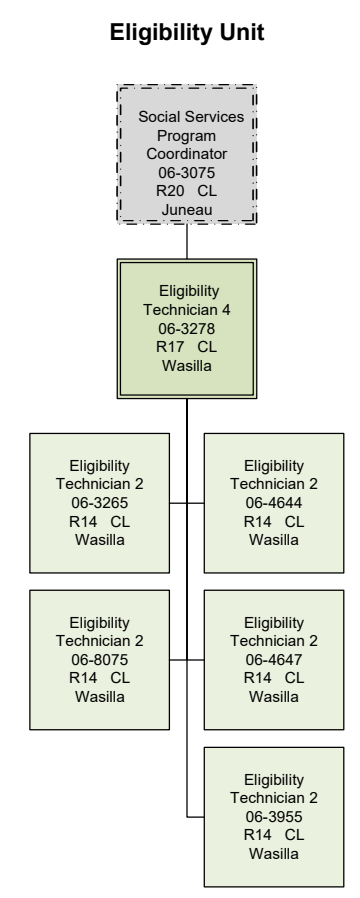
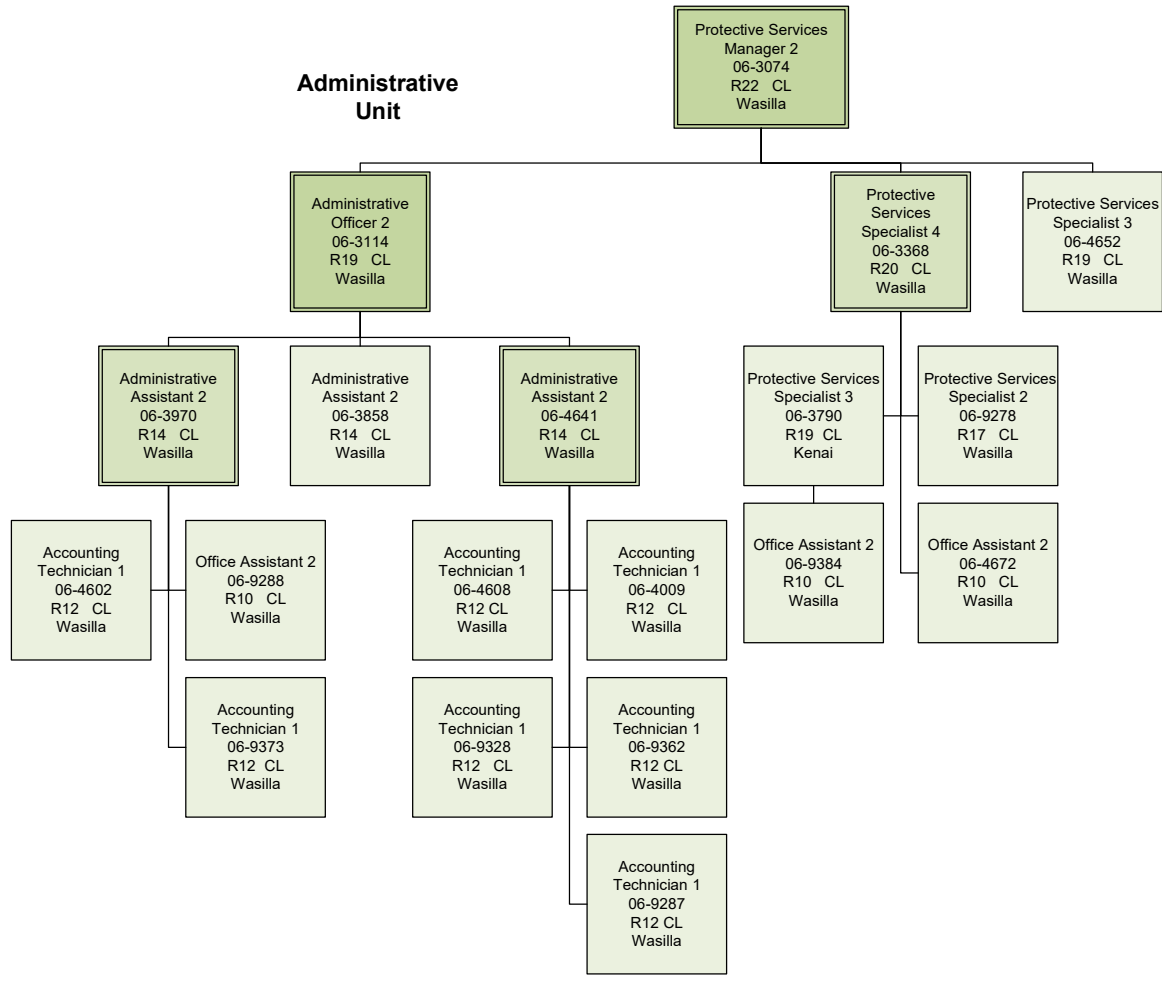
Protective Services
 Specialist 3
 06-3954
 R19 CL
 Fairbanks

Protective Services
 Specialist 1
 06-9396
 R15 CL
 Fairbanks

Protective Services
 Manager 1
 06-3014
 R21 CL
 Fairbanks



Department of Family and Community Services
 Front Line Social Workers
 Office of Children's Services
 Southcentral Regional Office



Department of Family and Community Services
 Front Line Social Workers
 Office of Children's Services
 Southcentral Regional Office (cont.)

Protective Services
 Manager 2
 06-3074
 R22 CL
 Wasilla

Protective Services
 Manager 1
 06-9289
 R21 CL
 Kenai

Administrative
 Assistant 2
 06-3080
 R14 CL
 Kenai

Protective Services
 Specialist 4
 06-9152
 R20 CL
 Homer

Protective Services
 Specialist 4
 06-3139
 R20 CL
 Kenai

Protective Services
 Specialist 4
 06-4537
 R20 CL
 Kenai

Protective Services
 Specialist 4
 06-3408
 R20 CL
 Kodiak

Protective Services
 Specialist 3
 06-9136
 R19 CL
 Wasilla

Protective Services
 Specialist 3
 06-9291
 R19 CL
 Wasilla

Social Services
 Associate
 06-9387
 R12 CL
 Kenai

Social Services
 Associate
 06-9147
 R12 CL
 Wasilla

Protective Services
 Specialist 2
 06-9389
 R17 CL
 Kodiak

Protective Services
 Specialist 3
 06-4535
 R19 CL
 Kenai

Protective Services
 Specialist 2
 06-9189
 R17 CL
 Kenai

Protective Services
 Specialist 1
 06-9344
 R15 CL
 Kenai

Protective Services
 Specialist 2
 06-3034
 R17 CL
 Wasilla

Social Services
 Associate
 06-3109
 R12 CL
 Kenai

Social Services
 Associate
 26-1017
 R12 CL
 Kenai

Protective Services
 Specialist 3
 06-3141
 R19 CL
 Homer

Protective Services
 Specialist 3
 06-3767
 R19 CL
 Kenai

Protective Services
 Specialist 3
 06-9284
 R19 CL
 Kenai

Protective Services
 Specialist 3
 06-4634
 R19 CL
 Kenai

Protective Services
 Specialist 1
 06-9342
 R15 CL
 Kenai

Social Services
 Associate
 06-3859
 R12 CL
 Kenai

Social Services
 Associate
 06-3058
 R12 CL
 Dillingham

Protective Services
 Specialist 2
 06-9148
 R17 CL
 Homer

Protective Services
 Specialist 1
 06-9343
 R15 CL
 Kenai

Protective Services
 Specialist 1
 06-4648
 R15 CL
 Kenai

Protective Services
 Specialist 3
 06-3197
 R19 CL
 Kenai

Protective Services
 Specialist 2
 06-3046
 R17 CL
 Wasilla

Social Services
 Associate
 06-3143
 R12 CL
 Kenai

Protective Services
 Specialist 1
 06-3070
 R15 CL
 Wasilla

Protective Services
 Specialist 1
 06-3789
 R15 CL
 Kenai

Protective Services
 Specialist 2
 06-9190
 R17 CL
 Kenai

Protective Services
 Specialist 2
 06-9188
 R17 CL
 Wasilla

Protective Services
 Specialist 2
 06-3745
 R17 CL
 Wasilla

Protective Services
 Specialist 1
 06-4536
 R15 CL
 Kenai

Protective Services
 Specialist 2
 06-4539
 R17 CL
 Wasilla

Protective Services
 Specialist 2
 06-3189
 R17 CL
 King Salmon

Department of Family and Community Services
 Front Line Social Workers
 Office of Children's Services
 Southcentral Regional Office (cont.)

Protective Services
 Manager 2
 06-3074
 R22 CL
 Wasilla

Protective Services
 Manager 1
 06-3015
 R21 CL
 Wasilla

Administrative
 Assistant 2
 06-3663
 R14 CL
 Wasilla

Protective Services
 Specialist 4
 06-9183
 R20 CL
 Wasilla

Protective Services
 Specialist 4
 06-3691
 R20 CL
 Wasilla

Protective Services
 Specialist 4
 06-4532
 R20 CL
 Wasilla

Protective Services
 Specialist 4
 06-3126
 R20 CL
 Wasilla

Protective Services
 Specialist 4
 06-9359
 R20 CL
 Wasilla

Protective Services
 Specialist 4
 06-9358
 R20 CL
 Wasilla

Social Services
 Associate
 06-9276
 R12 CL
 Wasilla

Protective Services
 Specialist 2
 06-9352
 R17 CL
 Wasilla

Protective Services
 Specialist 2
 06-9330
 R17 CL
 Wasilla

Protective Services
 Specialist 3
 06-1805
 R19 CL
 Wasilla

Protective Services
 Specialist 3
 06-8485
 R19 CL
 Wasilla

Protective Services
 Specialist 3
 06-9346
 R19 CL
 Wasilla

Protective Services
 Specialist 3
 06-4651
 R19 CL
 Wasilla

Protective Services
 Specialist 3
 06-4922
 R19 CL
 Wasilla

Protective Services
 Specialist 3
 06-9186
 R19 CL
 Wasilla

Protective Services
 Specialist 3
 06-3170
 R19 CL
 Kenai

Social Services
 Associate
 06-9364
 R12 CL
 Wasilla

Protective Services
 Specialist 2
 06-9329
 R17 CL
 Wasilla

Protective Services
 Specialist 2
 06-3940
 R17 CL
 Wasilla

Protective Services
 Specialist 1
 06-9351
 R15 CL
 Wasilla

Protective Services
 Specialist 2
 06-3744
 R17 CL
 Wasilla

Protective Services
 Specialist 3
 06-9283
 R19 CL
 Wasilla

Protective Services
 Specialist 1
 06-9187
 R15 CL
 Wasilla

Protective Services
 Specialist 2
 06-3020
 R17 CL
 Wasilla

Protective Services
 Specialist 1
 06-9354
 R15 CL
 Wasilla

Protective Services
 Specialist 2
 06-9355
 R17 CL
 Wasilla

Social Services
 Associate
 26-1019
 R12 CL
 Wasilla

Protective Services
 Specialist 1
 06-3243
 R15 CL
 Wasilla

Protective Services
 Specialist 2
 06-9353
 R17 CL
 Wasilla

Protective Services
 Specialist 2
 06-9349
 R17 CL
 Wasilla

Protective Services
 Specialist 2
 06-3422
 R17 CL
 Wasilla

Protective Services
 Specialist 3
 06-9348
 R19 CL
 Wasilla

Protective Services
 Specialist 2
 06-3411
 R17 CL
 Wasilla

Protective Services
 Specialist /3
 06-3194
 R19 CL
 Wasilla

Protective Services
 Specialist 2
 06-3365
 R17 CL
 Wasilla

Protective Services
 Specialist 2
 06-9331
 R17 CL
 Wasilla

Social Services
 Associate
 06-3547
 R12 CL
 Wasilla

Social Services
 Associate
 06-9361
 R12 CL
 Wasilla

Protective Services
 Specialist 2
 06-9350
 R17 CL
 Wasilla

Protective Services
 Specialist 3
 06-9184
 R19 CL
 Wasilla

Protective Services
 Specialist 3
 06-9345
 R19 CL
 Wasilla

Social Services
 Associate
 06-9386
 R12 CL
 Valdez

Protective Services
 Specialist 1
 06-9146
 R15 CL
 Wasilla

Social Services
 Associate
 06-3449
 R12 CL
 Wasilla

Social Services
 Associate
 26-1018
 R12 CL
 Wasilla

Protective Services
 Specialist 2
 06-3202
 R17 CL
 Wasilla

Protective Services
 Specialist 1
 06-9347
 R15 CL
 Wasilla

Social Services
 Associate
 06-3866
 R12 CL
 Wasilla

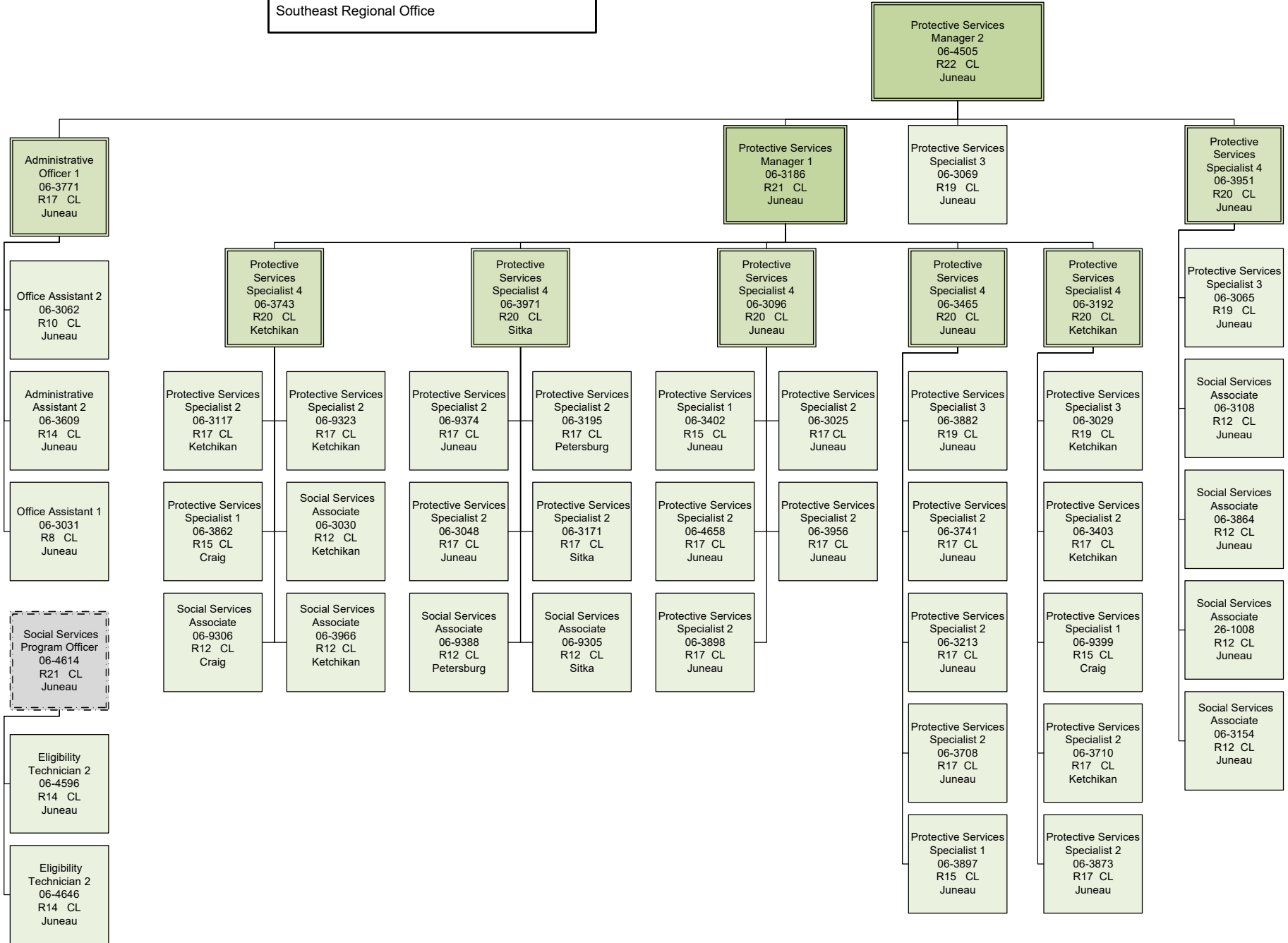
Protective Services
 Specialist 1
 06-4534
 R15 CL
 Wasilla

Social Services
 Associate
 06-3860
 R12 CL
 Wasilla

Protective Services
 Specialist 1
 06-9149
 R15 CL
 Wasilla

Administrative Support Unit

Department of Family and Community Services
 Office of Children's Services
 Front Line Social Workers
 Southeast Regional Office



Department of Family and Community Services
 Office of Children's Services
 Front Line Social Workers
 Western Regional Office

Protective Services
 Manager 2
 06-9296
 R22 CL
 Anchorage

Administrative Support Unit

Protective Services
 Manager 1
 06-3201
 R21 CL
 Bethel

Protective Services
 Specialist 3
 06-9303
 R19 CL
 Bethel

Social Services
 Associate
 06-3191
 R12 CL
 Saint Mary's

Social Services
 Associate
 06-4664
 R12 CL
 Aniak

Social Services
 Associate
 26-1014
 R12 CL
 Bethel

Administrative
 Officer 1
 06-9295
 R17 CL
 Bethel

Protective
 Services
 Specialist 4
 06-3072
 R20 CL
 Anchorage

Protective
 Services
 Specialist 4
 06-4548
 R20 CL
 Bethel

Protective
 Services
 Specialist 4
 06-3060
 R20 CL
 Anchorage

Protective
 Services
 Specialist 4
 06-3198
 R20 CL
 Bethel

Administrative
 Assistant 2
 06-3164
 R14 CL
 Bethel

Protective Services
 Specialist 2
 06-4649
 R17 CL
 Bethel

Protective Services
 Specialist 3
 06-9324
 R19 CL
 Anchorage

Protective Services
 Specialist 2
 06-3900
 R17 CL
 Anchorage

Protective Services
 Specialist 2
 06-3895
 R17 CL
 Bethel

Protective Services
 Specialist 1
 06-3205
 R15 CL
 Anchorage

Protective Services
 Specialist 2
 06-4650
 R17 CL
 Bethel

Protective Services
 Specialist 3
 06-9185
 R19 CL
 Anchorage

Protective Services
 Specialist 3
 06-9325
 R19 CL
 Anchorage

Protective Services
 Specialist 2
 06-3880
 R17 CL
 Bethel

Social Services
 Associate
 06-3179
 R12 CL
 Bethel

Protective Services
 Specialist 1
 06-3375
 R15 CL
 Anchorage

Protective Services
 Specialist 2
 06-9326
 R17 CL
 Anchorage

Protective Services
 Specialist 2
 06-9327
 R17 CL
 Anchorage

Protective Services
 Specialist 2
 06-4549
 R17 CL
 Anchorage

Protective Services
 Specialist 2
 06-9297
 R17 CL
 Bethel

Protective Services
 Specialist 1
 06-3729
 R15 CL
 Bethel

Protective Services
 Specialist 3
 06-9150
 R19 CL
 Anchorage

Social Services
 Associate
 06-3193
 R12 CL
 Bethel

Social Services
 Associate
 06-3064
 R12 CL
 Bethel

Protective Services
 Specialist 2
 06-3896
 R17 CL
 Anchorage

Protective Services
 Specialist 2
 06-9298
 R17 CL
 Bethel

Protective Services
 Specialist 2
 06-3214
 R17 CL
 Bethel

Social Services
 Associate
 06-4555
 R12 CL
 Bethel

Protective Services
 Specialist 2
 06-9151
 R17 CL
 Bethel

Permanency

Protective
 Services
 Specialist 4
 06-3951
 R20 CL
 Juneau

Protective Services
 Specialist 3
 06-3894
 R19 CL
 Bethel

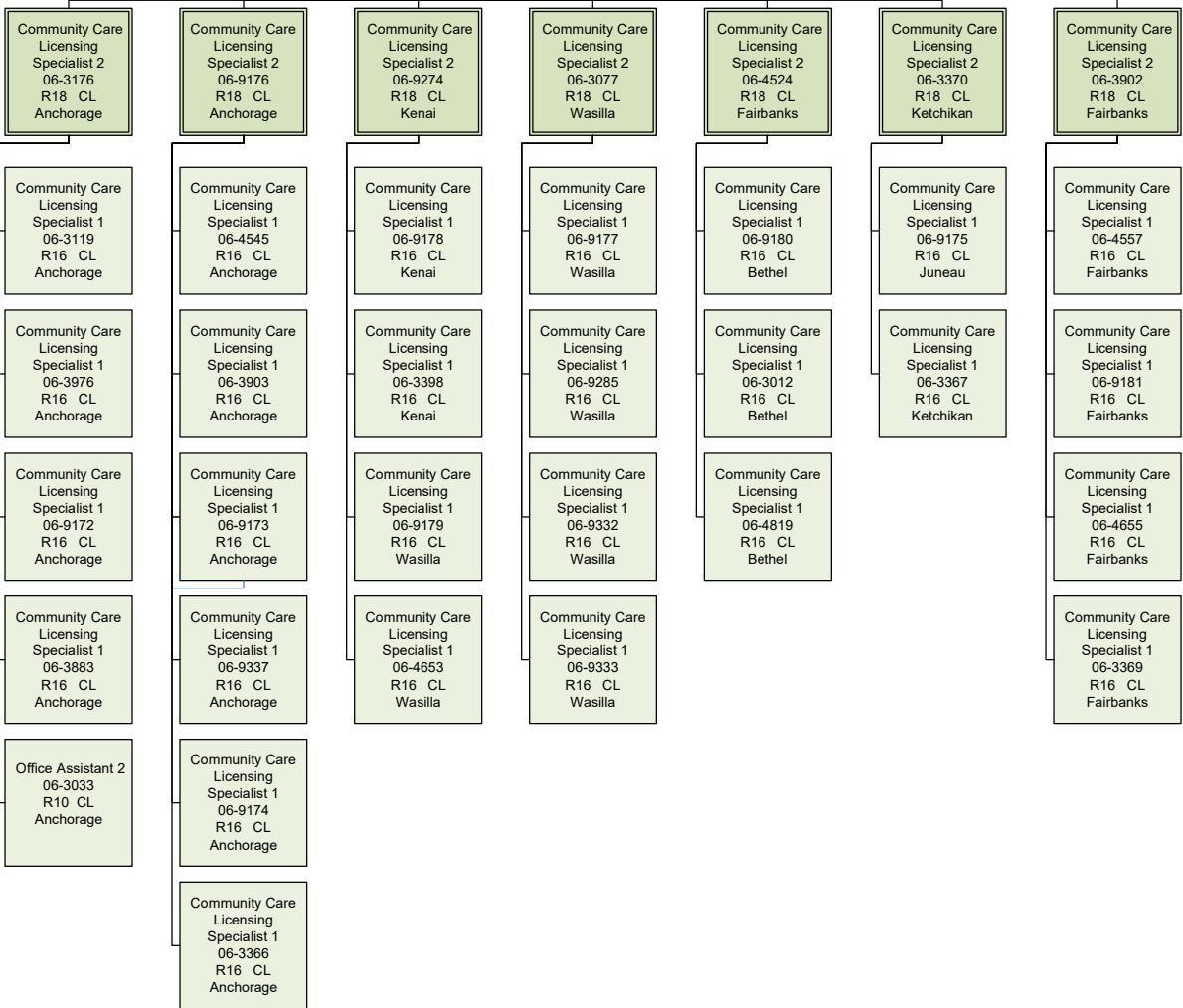
Department of Family and Community Services
 Office of Children's Services
 Front Line Social Workers
 Foster Care Licensing / Independent Living
 Program / Nursing

Licensing Unit

Social Services Program
 Officer
 06-3068
 R21 CL
 Juneau

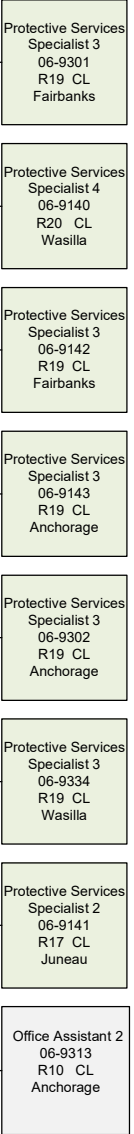
Community Care
 Licensing Specialist 3
 06-9273
 R20 CL
 Anchorage

Community Care
 Licensing Specialist 3
 06-4567
 R20 CL
 Fairbanks



Independent Living Unit

Protective Services
 Specialist 4
 06-1350
 R20 CL
 Juneau



Nursing Unit

Nurse
 Consultant 2
 06-4606
 R26 CL
 Anchorage

