

Department of Family and Community Services
 Office of Children's Services
 Front Line Social Workers
 Anchorage Regional Office

Protective Services
 Manager 2
 06-4506
 R22 CL
 Anchorage

Family Services

Administrative Support Unit

Administrative
 Officer 2
 06-3586
 R19 CL
 Anchorage

Protective Services
 Specialist 2
 06-N12024
 R17 CL
 Anchorage

Protective Services
 Specialist 3
 06-4504
 R19 CL
 Anchorage

Protective Services
 Manager 1
 06-4633
 R21 CL
 Anchorage

Social Services
 Associate
 26-1020
 R12 CL
 Anchorage

Office Assistant 2
 06-3082
 R10 CL
 Anchorage

Social Services
 Program
 Coordinator
 06-3944
 R20 CL
 Juneau

Administrative
 Assistant 2
 06-4640
 R14 CL
 Anchorage

Accounting
 Technician 1
 06-3063
 R12 CL
 Anchorage

Administrative
 Assistant 2
 06-3161
 R14 CL
 Anchorage

Office Assistant 3
 26-1021
 R11 CL
 Anchorage

Protective Services
 Specialist 4
 06-9393
 R20 CL
 Anchorage

Protective Services
 Specialist 4
 06-3928
 R20 CL
 Anchorage

Protective Services
 Specialist 4
 06-3125
 R20 CL
 Anchorage

Protective Services
 Specialist 4
 06-4626
 R20 CL
 Anchorage

Protective Services
 Specialist 4
 06-3018
 R20 CL
 Anchorage

Office Assistant 3
 06-4670
 R11 CL
 Anchorage

Office Assistant 2
 06-9385
 R10 CL
 Anchorage

Office Assistant 2
 06-3156
 R10 CL
 Anchorage

Protective Services
 Specialist 2
 06-4629
 R17 CL
 Anchorage

Protective Services
 Specialist 3
 06-9153
 R19 CL
 Anchorage

Protective Services
 Specialist 2
 06-9271
 R17 CL
 Anchorage

Protective Services
 Specialist 3
 06-3417
 R19 CL
 Anchorage

Protective Services
 Specialist 3
 06-3712
 R19 CL
 Anchorage

Office Assistant 1
 06-3863
 R8 CL
 Anchorage

Office Assistant 1
 06-3924
 R8 CL
 Anchorage

Office Assistant 2
 06-3899
 R10 CL
 Anchorage

Protective Services
 Specialist 2
 06-9315
 R17 CL
 Anchorage

Protective Services
 Specialist 2
 06-3432
 R17 CL
 Anchorage

Protective Services
 Specialist 2
 06-9155
 R17 CL
 Anchorage

Protective Services
 Specialist 3
 06-4547
 R19 CL
 Anchorage

Protective Services
 Specialist 2
 06-9335
 R17 CL
 Anchorage

Office Assistant 1
 06-3964
 R8 CL
 Anchorage

Office Assistant 1
 06-3921
 R8 CL
 Anchorage

Office Assistant 2
 06-4607
 R10 CL
 Anchorage

Protective Services
 Specialist 2
 06-3425
 R17 CL
 Anchorage

Protective Services
 Specialist 1
 06-9279
 R15 CL
 Anchorage

Protective Services
 Specialist 2
 06-3931
 R17 CL
 Anchorage

Protective Services
 Specialist 3
 06-4543
 R19 CL
 Anchorage

Protective Services
 Specialist 2
 06-3374
 R17 CL
 Anchorage

Office Assistant 1
 06-4660
 R8 CL
 Anchorage

Office Assistant 1
 06-3035
 R8 CL
 Anchorage

Office Assistant 2
 26-1027
 R10 CL
 Anchorage

Protective Services
 Specialist 1
 06-9154
 R15 CL
 Anchorage

Protective Services
 Specialist 2
 06-3428
 R17 CL
 Anchorage

Protective Services
 Specialist 2
 06-4628
 R17 CL
 Anchorage

Protective Services
 Specialist 1
 06-3100
 R15 CL
 Anchorage

Protective Services
 Specialist 2
 06-3870
 R17 CL
 Anchorage

Office Assistant 1
 06-3923
 R8 CL
 Anchorage

Office Assistant 1
 06-9286
 R8 CL
 Anchorage

Protective Services
 Specialist 1
 06-3764
 R15 CL
 Anchorage

Social Services
 Associate
 06-3390
 R12 CL
 Anchorage

Protective Services
 Specialist 2
 06-4627
 R17 CL
 Anchorage

Protective Services
 Specialist 2
 06-9370
 R17 CL
 Anchorage

Protective Services
 Specialist 2
 06-3890
 R17 CL
 Anchorage

Social Services
 Associate
 26-1010
 R12 CL
 Anchorage

Social Services
 Associate
 06-3938
 R12 CL
 Anchorage

Social Services
 Associate
 26-1013
 R12 CL
 Anchorage

Social Services
 Associate
 06-4622
 R12 CL
 Anchorage

Department of Family and Community Services
 Office of Children's Services
 Front Line Social Workers
 Anchorage Regional Office (cont.)

Protective Services
 Manager 2
 06-4506
 R22 CL
 Anchorage

Protective Services
 Manager 1
 06-3878
 R21 CL
 Anchorage

Family Services

ASPIN Unit

Protective Services Specialist
 3
 06-4636
 R19 CL
 Juneau

Administrative Assistant 2
 06-3747
 R14 CL
 Anchorage

Protective Services Specialist 4
 06-3891
 R20 CL
 Anchorage

Protective Services Specialist 4
 06-9392
 R20 CL
 Anchorage

Protective Services Specialist 4
 06-3430
 R20 CL
 Anchorage

Protective Services Specialist 4
 06-4544
 R20 CL
 Anchorage

Team Decision Making

Project Assistant
 06-4624
 R16 CL
 Anchorage

Social Services Associate
 06-3942
 R12 CL
 Anchorage

Protective Services Specialist 3
 06-9367
 R19 CL
 Anchorage

Protective Services Specialist 2
 06-3932
 R17 CL
 Anchorage

Protective Services Specialist 3
 06-4541
 R19 CL
 Anchorage

Protective Services Specialist 2
 06-9366
 R17 CL
 Anchorage

Protective Services Specialist 3
 06-9133
 R19 CL
 Anchorage

Social Services Associate
 06-4671
 R12 CL
 Anchorage

Social Services Associate
 06-3939
 R12 CL
 Anchorage

Protective Services Specialist 3
 06-9365
 R19 CL
 Anchorage

Protective Services Specialist 2
 06-9272
 R17 CL
 Anchorage

Protective Services Specialist 3
 06-9196
 R19 CL
 Anchorage

Protective Services Specialist 2
 06-3409
 R17 CL
 Anchorage

Protective Services Specialist 3
 06-9134
 R19 CL
 Anchorage

Social Services Associate
 06-4623
 R12 CL
 Anchorage

Social Services Associate
 06-4546
 R12 CL
 Anchorage

Protective Services Specialist 3
 06-3057
 R19 CL
 Anchorage

Protective Services Specialist 2
 06-9267
 R17 CL
 Anchorage

Protective Services Specialist 3
 06-9280
 R19 CL
 Anchorage

Protective Services Specialist 2
 06-3098
 R17 CL
 Anchorage

Protective Services Specialist 3
 06-9135
 R19 CL
 Anchorage

Social Services Associate
 06-4621
 R12 CL
 Anchorage

Social Services Associate
 06-3748
 R12 CL
 Anchorage

Protective Services Specialist 2
 06-3929
 R17 CL
 Anchorage

Protective Services Specialist 1
 06-3022
 R15 CL
 Anchorage

Protective Services Specialist 2
 06-9270
 R17 CL
 Anchorage

Protective Services Specialist 1
 06-9390
 R15 CL
 Anchorage

Office Assistant 2
 06-9131
 R10 CL
 Anchorage

Protective Services Specialist 1
 06-9282
 R15 CL
 Anchorage

Protective Services Specialist 1
 06-9194
 R15 CL
 Anchorage

Protective Services Specialist 2
 06-3922
 R17 CL
 Anchorage

Social Services Associate
 26-1011
 R12 CL
 Anchorage

Social Services Associate
 26-1012
 R12 CL
 Anchorage

Social Services Associate
 06-9309
 R12 CL
 Anchorage

Social Services Associate
 26-1016
 R12 CL
 Anchorage

Protective Services Specialist 2
 06-3927
 R17 CL
 Anchorage

Department of Family and Community Services
 Office of Children's Services
 Front Line Social Workers
 Anchorage Regional Office (cont.)

Protective Services
 Manager 2
 06-4506
 R22 CL
 Anchorage

Protective Services
 Manager 1
 06-3085
 R21 CL
 Anchorage

Initial Assessments



ORCA Unit

Data Processing
 Manager 1
 06-9304
 R22 CL
 Anchorage

Social Services
 Program
 Officer
 06-9320
 R21 CL
 Anchorage

Social Services
 Program
 Coordinator
 06-9171
 R20 CL
 Anchorage

Protective Services
 Specialist 2
 06-3926
 R17 CL
 Anchorage

Information System
 Coordinator
 06-3934
 R18 CL
 Anchorage

Social Services
 Program
 Coordinator
 06-9168
 R20 CL
 Anchorage

Eligibility Unit

Social Services
 Program Coordinator
 06-3075
 R20 CL
 Juneau

Eligibility
 Technician 4
 06-8104
 R17 CL
 Anchorage

Eligibility
 Technician 2
 06-4645
 R14 CL
 Anchorage

Eligibility
 Technician 2
 06-9339
 R14 CL
 Anchorage

Eligibility
 Technician 2
 06-8149
 R14 CL
 Anchorage

Eligibility
 Technician 2
 06-3026
 R14 CL
 Anchorage

Eligibility
 Technician 2
 06-3187
 R14 CL
 Anchorage

Department of Family and Community Services
 Office of Children's Services
 Front Line Social Workers
 Anchorage Regional Office (cont.)

Social Services
 Program Administrator
 06-4502
 R23 CL
 Anchorage

Quality Assurance Unit

Protective Services
 Manager 1
 06-3792
 R21 CL
 Anchorage

Centralized Intake

Mentor Team

Social Services
 Program Officer
 06-3421
 R21 CL
 Anchorage

Protective Services
 Specialist 4
 06-3879
 R20 CL
 Anchorage

Protective Services
 Specialist 4
 06-3715
 R20 CL
 Anchorage

Protective Services
 Specialist 4
 06-9290
 R20 CL
 Anchorage

Protective Services
 Specialist 4
 06-9162
 R20 CL
 Anchorage

Protective Services
 Specialist 4
 06-9167
 R20 CL
 Anchorage

Social Services
 Program Coordinator
 06-3937
 R20 CL
 Anchorage

Social Services
 Program Coordinator
 06-9318
 R20 CL
 Anchorage

Protective Services
 Specialist 2
 06-3959
 R17 CL
 Anchorage

Protective Services
 Specialist 2
 06-3960
 R17 CL
 Anchorage

Protective Services
 Specialist 2
 06-3270
 R17 CL
 Anchorage

Protective Services
 Specialist 2
 06-9161
 R17 CL
 Anchorage

Protective Services
 Specialist 3
 06-9357
 R19 CL
 Wasilla

Protective Services
 Specialist 3
 06-9156
 R19 CL
 Anchorage

Social Services
 Program Coordinator
 06-9145
 R20 CL
 Anchorage

Social Services
 Program Coordinator
 06-9319
 R20 CL
 Anchorage

Protective Services
 Specialist 2
 06-9193
 R17 CL
 Anchorage

Protective Services
 Specialist 2
 06-3269
 R17 CL
 Anchorage

Protective Services
 Specialist 2
 06-3045
 R17 CL
 Anchorage

Protective Services
 Specialist 2
 06-3427
 R17 CL
 Anchorage

Protective Services
 Specialist 3
 06-9369
 R19 CL
 Anchorage

Protective Services
 Specialist 3
 06-9371
 R19 CL
 Juneau

Research Analyst 3
 06-1351
 R18 CL
 Anchorage

Office Assistant 2
 06-9317
 R10 CL
 Anchorage

Protective Services
 Specialist 2
 06-3021
 R17 CL
 Anchorage

Protective Services
 Specialist 2
 06-4540
 R17 CL
 Anchorage

Protective Services
 Specialist 2
 06-3185
 R17 CL
 Anchorage

Protective Services
 Specialist 2
 06-3746
 R17 CL
 Anchorage

Protective Services
 Specialist 3
 06-9182
 R19 CL
 Anchorage

Protective Services
 Specialist 3
 06-4550
 R19 CL
 Wasilla

Protective Services
 Specialist 2
 06-4513
 R17 CL
 Anchorage

Protective Services
 Specialist 2
 06-3875
 R17 CL
 Anchorage

Protective Services
 Specialist 2
 06-9292
 R17 CL
 Fairbanks

Protective Services
 Specialist 2
 06-3067
 R17 CL
 Anchorage

Protective Services
 Specialist 2
 06-3027
 R17 CL
 Anchorage

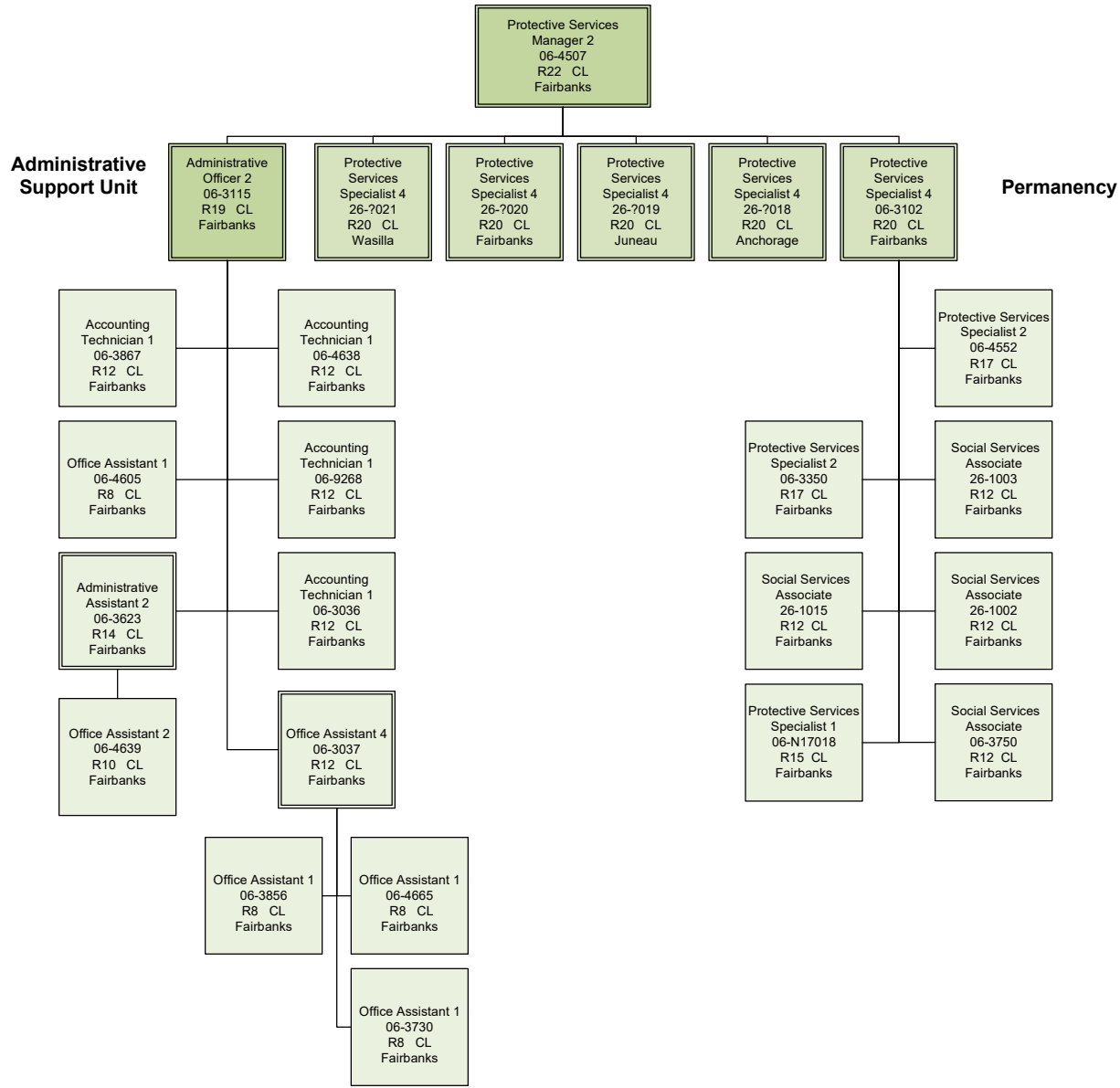
Protective Services
 Specialist 2
 06-3763
 R17 CL
 Anchorage

Protective Services
 Specialist 2
 06-3877
 R17 CL
 Kenai

Office Assistant 2
 06-9316
 R10 CL
 Anchorage

Protective Services
 Specialist 1
 06-9338
 R15 CL
 Fairbanks

Department of Family and Community Services
 Office of Children's Services
 Front Line Social Workers
 Northern Regional Office



Department of Family and Community Services
Office of Children's Services
Front Line Social Workers
Northern Regional Office (cont.)

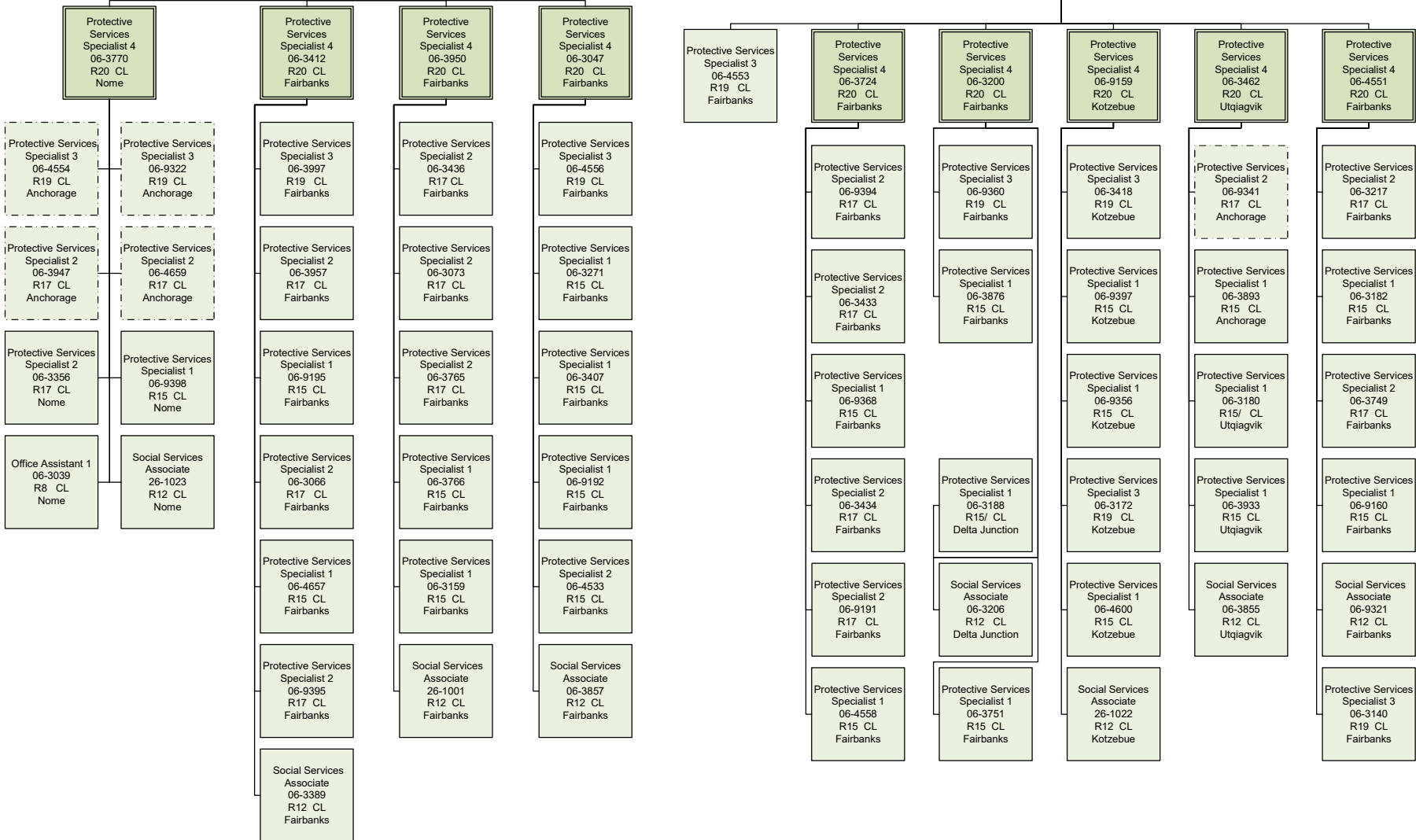
Protective Services
Manager 2
06-4507
R22 CL
Fairbanks

Protective Services
Manager 1
06-3016
R21 CL
Fairbanks

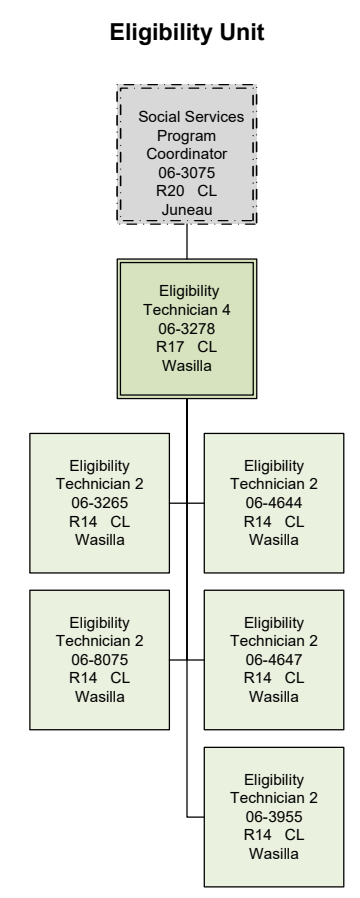
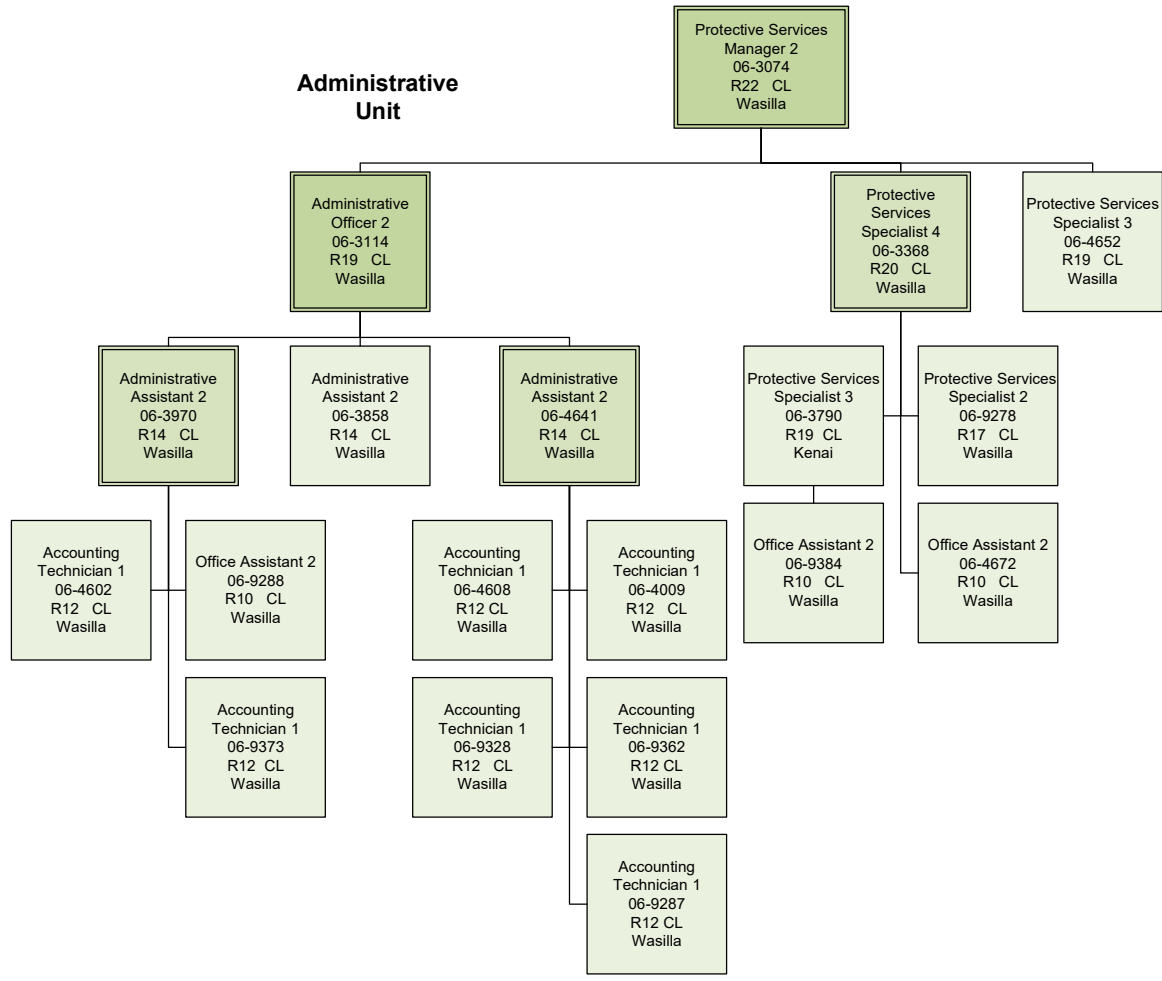
Protective Services
Specialist 3
06-3954
R19 CL
Fairbanks

Protective Services
Specialist 1
06-9396
R15 CL
Fairbanks

Protective Services
Manager 1
06-3014
R21 CL
Fairbanks



Department of Family and Community Services
 Front Line Social Workers
 Office of Children's Services
 Southcentral Regional Office



Department of Family and Community Services
 Front Line Social Workers
 Office of Children's Services
 Southcentral Regional Office (cont.)

Protective Services
 Manager 2
 06-3074
 R22 CL
 Wasilla

Protective Services
 Manager 1
 06-9289
 R21 CL
 Kenai

Administrative
 Assistant 2
 06-3080
 R14 CL
 Kenai

Protective Services
 Specialist 4
 06-9152
 R20 CL
 Homer

Protective Services
 Specialist 4
 06-3139
 R20 CL
 Kenai

Protective Services
 Specialist 4
 06-4537
 R20 CL
 Kenai

Protective Services
 Specialist 4
 06-3408
 R20 CL
 Kodiak

Protective Services
 Specialist 3
 06-9136
 R19 CL
 Wasilla

Protective Services
 Specialist 3
 06-9291
 R19 CL
 Wasilla

Social Services
 Associate
 06-9387
 R12 CL
 Kenai

Social Services
 Associate
 06-9147
 R12 CL
 Wasilla

Protective Services
 Specialist 2
 06-9389
 R17 CL
 Kodiak

Protective Services
 Specialist 3
 06-4535
 R19 CL
 Kenai

Protective Services
 Specialist 2
 06-9189
 R17 CL
 Kenai

Protective Services
 Specialist 1
 06-9344
 R15 CL
 Kenai

Protective Services
 Specialist 2
 06-3034
 R17 CL
 Wasilla

Social Services
 Associate
 06-3109
 R12 CL
 Kenai

Social Services
 Associate
 26-1017
 R12 CL
 Kenai

Protective Services
 Specialist 3
 06-3141
 R19 CL
 Homer

Protective Services
 Specialist 3
 06-3767
 R19 CL
 Kenai

Protective Services
 Specialist 3
 06-9284
 R19 CL
 Kenai

Protective Services
 Specialist 3
 06-4634
 R19 CL
 Kenai

Protective Services
 Specialist 1
 06-9342
 R15 CL
 Kenai

Social Services
 Associate
 06-3859
 R12 CL
 Kenai

Social Services
 Associate
 06-3058
 R12 CL
 Dillingham

Protective Services
 Specialist 2
 06-9148
 R17 CL
 Homer

Protective Services
 Specialist 1
 06-9343
 R15 CL
 Kenai

Protective Services
 Specialist 1
 06-4648
 R15 CL
 Kenai

Protective Services
 Specialist 3
 06-3197
 R19 CL
 Kenai

Protective Services
 Specialist 2
 06-3046
 R17 CL
 Wasilla

Social Services
 Associate
 06-3143
 R12 CL
 Kenai

Protective Services
 Specialist 1
 06-3070
 R15 CL
 Wasilla

Protective Services
 Specialist 1
 06-3789
 R15 CL
 Kenai

Protective Services
 Specialist 2
 06-9190
 R17 CL
 Kenai

Protective Services
 Specialist 2
 06-9188
 R17 CL
 Wasilla

Protective Services
 Specialist 2
 06-3745
 R17 CL
 Wasilla

Protective Services
 Specialist 1
 06-4536
 R15 CL
 Kenai

Protective Services
 Specialist 2
 06-4539
 R17 CL
 Wasilla

Protective Services
 Specialist 2
 06-3189
 R17 CL
 King Salmon

Department of Family and Community Services
 Front Line Social Workers
 Office of Children's Services
 Southcentral Regional Office (cont.)

Protective Services
 Manager 2
 06-3074
 R22 CL
 Wasilla

Protective Services
 Manager 1
 06-3015
 R21 CL
 Wasilla

Administrative
 Assistant 2
 06-3663
 R14 CL
 Wasilla

Protective Services
 Specialist 4
 06-9183
 R20 CL
 Wasilla

Protective Services
 Specialist 4
 06-3691
 R20 CL
 Wasilla

Protective Services
 Specialist 4
 06-4532
 R20 CL
 Wasilla

Protective Services
 Specialist 4
 06-3126
 R20 CL
 Wasilla

Protective Services
 Specialist 4
 06-9359
 R20 CL
 Wasilla

Protective Services
 Specialist 4
 06-9358
 R20 CL
 Wasilla

Social Services
 Associate
 06-9276
 R12 CL
 Wasilla

Protective Services
 Specialist 2
 06-9352
 R17 CL
 Wasilla

Protective Services
 Specialist 2
 06-9330
 R17 CL
 Wasilla

Protective Services
 Specialist 3
 06-1805
 R19 CL
 Wasilla

Protective Services
 Specialist 3
 06-8485
 R19 CL
 Wasilla

Protective Services
 Specialist 3
 06-9346
 R19 CL
 Wasilla

Protective Services
 Specialist 3
 06-4651
 R19 CL
 Wasilla

Protective Services
 Specialist 3
 06-4922
 R19 CL
 Wasilla

Protective Services
 Specialist 3
 06-9186
 R19 CL
 Wasilla

Protective Services
 Specialist 3
 06-3170
 R19 CL
 Kenai

Social Services
 Associate
 06-9364
 R12 CL
 Wasilla

Protective Services
 Specialist 2
 06-9329
 R17 CL
 Wasilla

Protective Services
 Specialist 2
 06-3940
 R17 CL
 Wasilla

Protective Services
 Specialist 1
 06-9351
 R15 CL
 Wasilla

Protective Services
 Specialist 2
 06-3744
 R17 CL
 Wasilla

Protective Services
 Specialist 3
 06-9283
 R19 CL
 Wasilla

Protective Services
 Specialist 1
 06-9187
 R15 CL
 Wasilla

Protective Services
 Specialist 2
 06-3020
 R17 CL
 Wasilla

Protective Services
 Specialist 1
 06-9354
 R15 CL
 Wasilla

Protective Services
 Specialist 2
 06-9355
 R17 CL
 Wasilla

Social Services
 Associate
 26-1019
 R12 CL
 Wasilla

Protective Services
 Specialist 1
 06-3243
 R15 CL
 Wasilla

Protective Services
 Specialist 2
 06-9353
 R17 CL
 Wasilla

Protective Services
 Specialist 2
 06-9349
 R17 CL
 Wasilla

Protective Services
 Specialist 2
 06-3422
 R17 CL
 Wasilla

Protective Services
 Specialist 3
 06-9348
 R19 CL
 Wasilla

Protective Services
 Specialist 2
 06-3411
 R17 CL
 Wasilla

Protective Services
 Specialist /3
 06-3194
 R19 CL
 Wasilla

Protective Services
 Specialist 2
 06-3365
 R17 CL
 Wasilla

Protective Services
 Specialist 2
 06-9331
 R17 CL
 Wasilla

Social Services
 Associate
 06-3547
 R12 CL
 Wasilla

Social Services
 Associate
 06-9361
 R12 CL
 Wasilla

Protective Services
 Specialist 2
 06-9350
 R17 CL
 Wasilla

Protective Services
 Specialist 3
 06-9184
 R19 CL
 Wasilla

Protective Services
 Specialist 3
 06-9345
 R19 CL
 Wasilla

Social Services
 Associate
 06-9386
 R12 CL
 Valdez

Protective Services
 Specialist 1
 06-9146
 R15 CL
 Wasilla

Social Services
 Associate
 06-3449
 R12 CL
 Wasilla

Social Services
 Associate
 26-1018
 R12 CL
 Wasilla

Protective Services
 Specialist 2
 06-3202
 R17 CL
 Wasilla

Protective Services
 Specialist 1
 06-9347
 R15 CL
 Wasilla

Social Services
 Associate
 06-3866
 R12 CL
 Wasilla

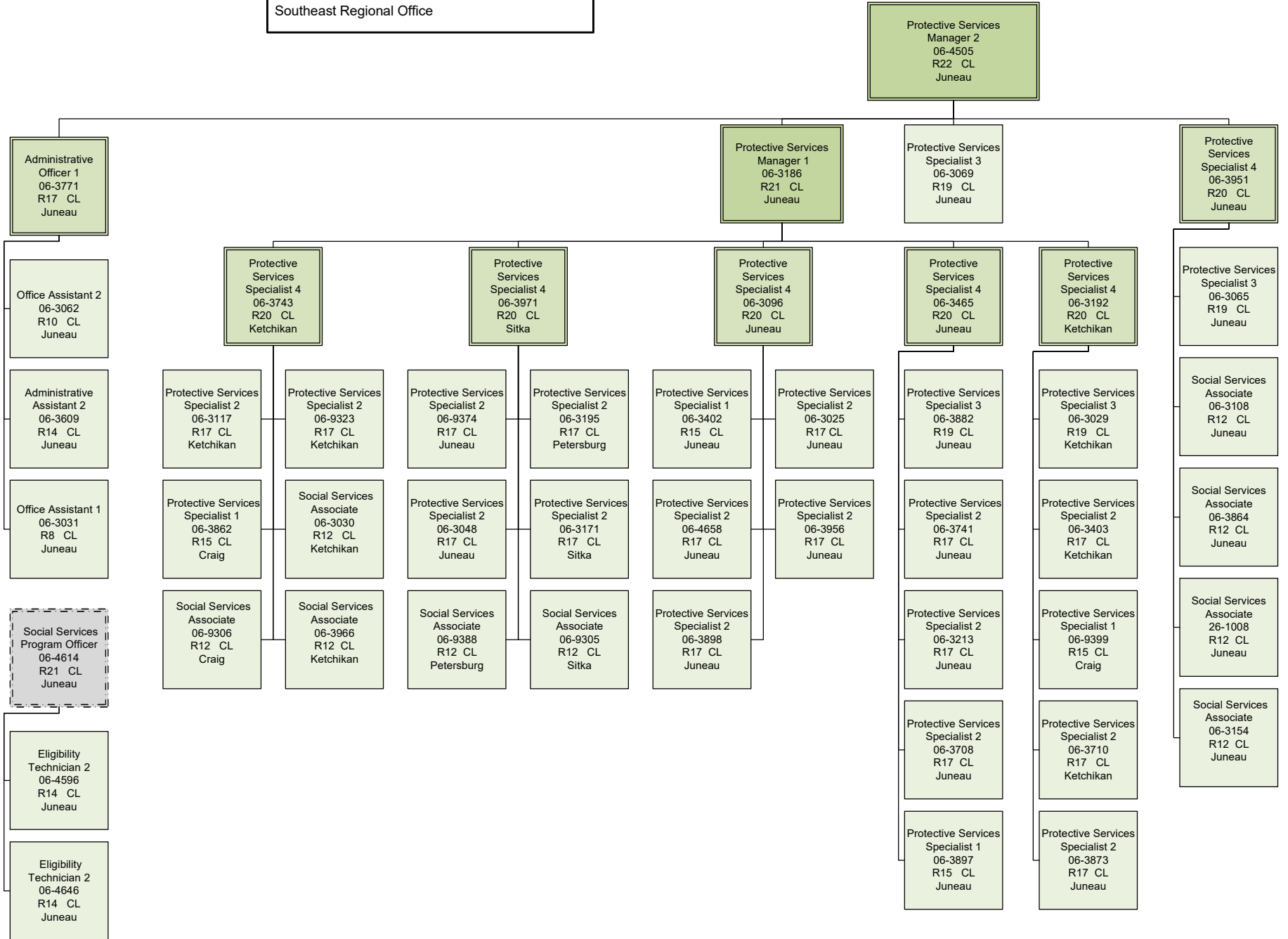
Protective Services
 Specialist 1
 06-4534
 R15 CL
 Wasilla

Social Services
 Associate
 06-3860
 R12 CL
 Wasilla

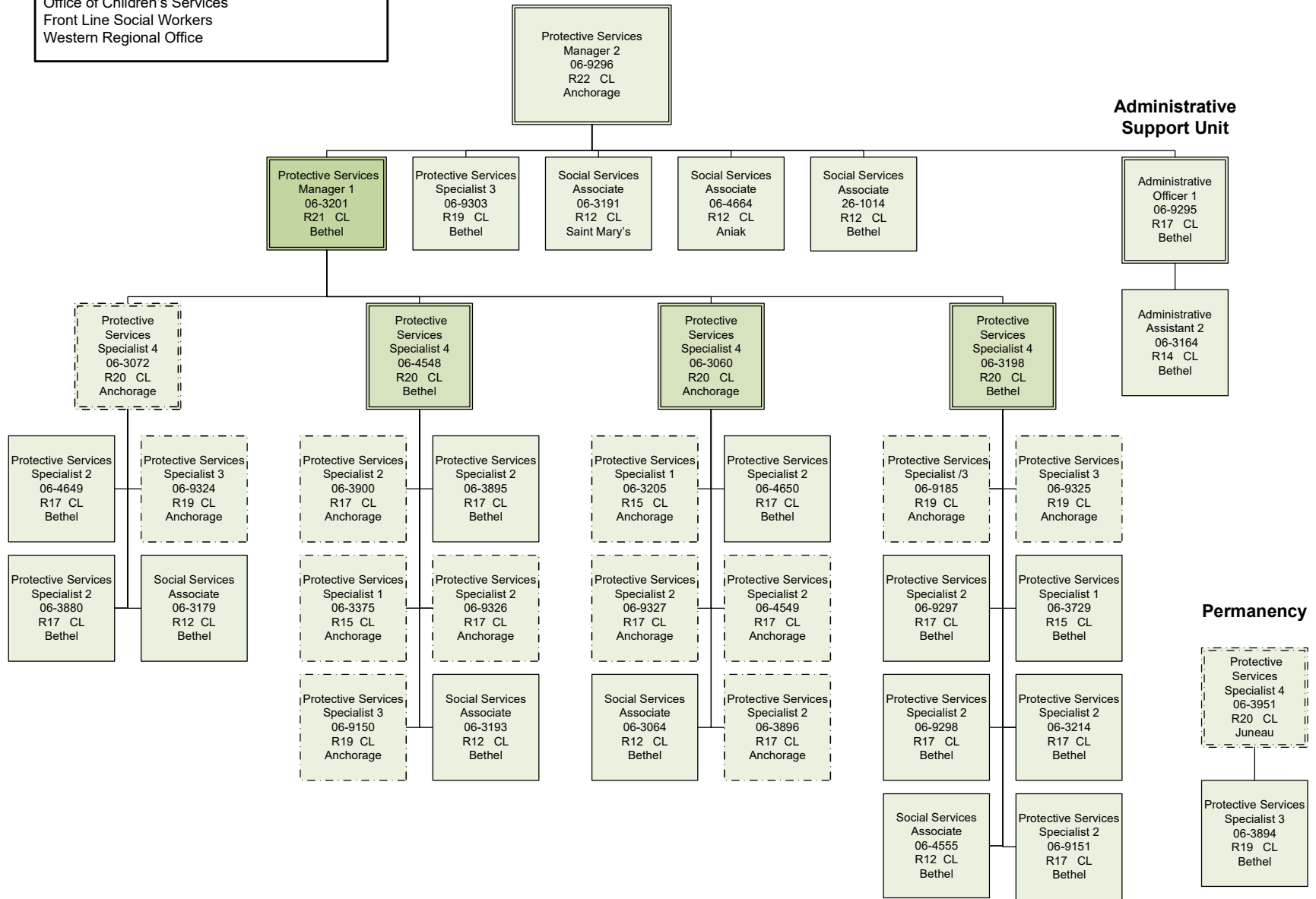
Protective Services
 Specialist 1
 06-9149
 R15 CL
 Wasilla

Administrative Support Unit

Department of Family and Community Services
 Office of Children's Services
 Front Line Social Workers
 Southeast Regional Office



Department of Family and Community Services
 Office of Children's Services
 Front Line Social Workers
 Western Regional Office



Administrative Support Unit

Permanency

Department of Family and Community Services
 Office of Children's Services
 Front Line Social Workers
 Foster Care Licensing / Independent Living
 Program / Nursing

Licensing Unit

Social Services Program
 Officer
 06-3068
 R21 CL
 Juneau

Community Care
 Licensing Specialist 3
 06-9273
 R20 CL
 Anchorage

Community Care
 Licensing Specialist 3
 06-4567
 R20 CL
 Fairbanks

Community Care
 Licensing Specialist 2
 06-3176
 R18 CL
 Anchorage

Community Care
 Licensing Specialist 2
 06-9176
 R18 CL
 Anchorage

Community Care
 Licensing Specialist 2
 06-9274
 R18 CL
 Kenai

Community Care
 Licensing Specialist 2
 06-3077
 R18 CL
 Wasilla

Community Care
 Licensing Specialist 2
 06-4524
 R18 CL
 Fairbanks

Community Care
 Licensing Specialist 2
 06-3370
 R18 CL
 Ketchikan

Community Care
 Licensing Specialist 2
 06-3902
 R18 CL
 Fairbanks

Community Care
 Licensing Specialist 1
 06-3119
 R16 CL
 Anchorage

Community Care
 Licensing Specialist 1
 06-4545
 R16 CL
 Anchorage

Community Care
 Licensing Specialist 1
 06-9178
 R16 CL
 Kenai

Community Care
 Licensing Specialist 1
 06-9177
 R16 CL
 Wasilla

Community Care
 Licensing Specialist 1
 06-9180
 R16 CL
 Bethel

Community Care
 Licensing Specialist 1
 06-9175
 R16 CL
 Juneau

Community Care
 Licensing Specialist 1
 06-4557
 R16 CL
 Fairbanks

Community Care
 Licensing Specialist 1
 06-3976
 R16 CL
 Anchorage

Community Care
 Licensing Specialist 1
 06-3903
 R16 CL
 Anchorage

Community Care
 Licensing Specialist 1
 06-3398
 R16 CL
 Kenai

Community Care
 Licensing Specialist 1
 06-9285
 R16 CL
 Wasilla

Community Care
 Licensing Specialist 1
 06-3012
 R16 CL
 Bethel

Community Care
 Licensing Specialist 1
 06-3367
 R16 CL
 Ketchikan

Community Care
 Licensing Specialist 1
 06-9181
 R16 CL
 Fairbanks

Community Care
 Licensing Specialist 1
 06-9172
 R16 CL
 Anchorage

Community Care
 Licensing Specialist 1
 06-9173
 R16 CL
 Anchorage

Community Care
 Licensing Specialist 1
 06-9179
 R16 CL
 Wasilla

Community Care
 Licensing Specialist 1
 06-9332
 R16 CL
 Wasilla

Community Care
 Licensing Specialist 1
 06-4819
 R16 CL
 Bethel

Community Care
 Licensing Specialist 1
 06-4655
 R16 CL
 Fairbanks

Community Care
 Licensing Specialist 1
 06-9181
 R16 CL
 Fairbanks

Community Care
 Licensing Specialist 1
 06-3883
 R16 CL
 Anchorage

Community Care
 Licensing Specialist 1
 06-9337
 R16 CL
 Anchorage

Community Care
 Licensing Specialist 1
 06-4653
 R16 CL
 Wasilla

Community Care
 Licensing Specialist 1
 06-9333
 R16 CL
 Wasilla

Office Assistant 2
 06-3033
 R10 CL
 Anchorage

Community Care
 Licensing Specialist 1
 06-9174
 R16 CL
 Anchorage

Community Care
 Licensing Specialist 1
 06-3366
 R16 CL
 Anchorage

Independent Living Unit

Protective Services
 Specialist 4
 06-1350
 R20 CL
 Juneau

Protective Services
 Specialist 3
 06-9301
 R19 CL
 Fairbanks

Protective Services
 Specialist 4
 06-9140
 R20 CL
 Wasilla

Protective Services
 Specialist 3
 06-9142
 R19 CL
 Fairbanks

Protective Services
 Specialist 3
 06-9143
 R19 CL
 Anchorage

Protective Services
 Specialist 3
 06-9302
 R19 CL
 Anchorage

Protective Services
 Specialist 3
 06-9334
 R19 CL
 Wasilla

Protective Services
 Specialist 2
 06-9141
 R17 CL
 Juneau

Office Assistant 2
 06-9313
 R10 CL
 Anchorage

Nursing Unit

Nurse
 Consultant 2
 06-4606
 R26 CL
 Anchorage

Project Assistant
 06-4616
 R16 CL
 Anchorage

Nurse
 Consultant 1
 06-4604
 R24 CL
 Wasilla

Nurse
 Consultant 1
 06-4601
 R24 CL
 Fairbanks

Nurse
 Consultant 1
 06-4603
 R24 CL
 Anchorage

Mental Health
 Clinician 4
 26-1024
 R23 CL
 Anchorage

Office Assistant 2
 06-9363
 R12 CL
 Wasilla

Mental Health
 Clinician 3
 06-4642
 R21 CL
 Anchorage