

State of Alaska FY2025 Governor's Operating Budget

Department of Family and Community Services Pioneer Homes Component Budget Summary

Component: Pioneer Homes**Contribution to Department's Mission**

The Department of Family and Community Services' mission is, "To provide support, safety, and personal well-being for vulnerable Alaskans." Alaska Pioneer Homes has been helping to promote and protect the health and well-being of Alaskans since the first home was established in 1913 by the First Territorial Legislature. The current Division's mission summarizes this century-old commitment as, "providing elder Alaskans a home and community, celebrating life through its final breath."

Core Services

- Provide a home, memory care, activities, food service, and personal care attendant services in Sitka, Fairbanks, Palmer, Anchorage, Ketchikan, and Juneau to Alaskan elders.
- Provide pharmaceutical services to Alaskan elders residing in the Sitka, Fairbanks, Anchorage, Ketchikan, and Juneau Pioneer Homes and in the Alaska Veterans and Pioneers Home in Palmer.

Major Component Accomplishments in 2023

- Served 601 elders in FY2022. Just under 52.5 percent required level 4 and 5 care/service.
- The resident payer source was 39 percent private pay, 27 percent Medicaid Waiver, and 34 percent Payment Assistance through the Alaska Pioneer Homes.
- Maintained a 60 percent veteran occupancy at the Alaska Veterans and Pioneer Home in Palmer, providing a home for 68 veterans and 115 total residents.
- The Pioneer Home centralized pharmacy filled over 79,000 prescriptions for the Pioneer Homes residents. The Pioneer Home Pharmacy began filling prescriptions for Division of Juvenile Justice, filling over 7,600 prescriptions for youth living in the Division's facilities.
- The fifth year of the Certified Nursing Aides Dementia Specialty Apprenticeship was successful; with 14 apprentices completing the FY2022 program and 20 apprentices participating in the FY2023 program. A total of 63 apprentices have completed the program to date.
- Continued to offer the Pharmacy Student Internship Program that provides on-site education for University of Southern California and Idaho State University through the University of Alaska Anchorage pharmacy students. In FY2022, 11 students interned at the Pioneer Home Pharmacy and one former student was hired to the Division. Interns enrolled in the program assist pharmacy staff in development and provision of training opportunities to Pioneer Home staff.
- The Pioneer Homes have 21 certified Teepa Snow Trainers. Each Pioneer Home has at least two certified Teepa Snow Trainers to help increase the skills of staff working with elders suffering from dementia.
- The Division made twenty-two additional beds available on the fourth floor of the Anchorage Pioneer Home. Nine of those beds are for those with complex behaviors. The Division is also continuing to explore ways to best utilize this space to meet the needs of Alaska's vulnerable populations.
- Installed Wi-Fi and cable television in each home that is free to the residents.

Key Component Challenges

- An increasing number of elders on the Division's waitlist are requiring services at a higher level of care for assistance with activities of daily living related to their dementia diagnosis or chronic health care needs. Memory care and higher levels of service require a higher staffing ratio as well as accessible rooms and bathrooms. Staff are currently evaluating low-cost opportunities to add additional memory care or higher-level care beds.
- Continuously identifying areas of efficiencies for the five Pioneer Homes, the Alaska Veterans and Pioneers Home, and the centralized Pioneer Homes pharmacy.
- Developing ways to provide care for residents that have complex behaviors beyond the scope of what the Pioneer Homes have previously provided.

- Recruiting and retaining an adequate number of skilled direct care staff with competencies in best practices for aging and dementia care and developing training to improve the ability of staff to meet the needs of more complex residents.
- Aging and older infrastructure in each of the homes needs to be addressed before more severe issues arise.

Significant Changes in Results to be Delivered in FY2025

- Exploring options for Health Insurance Portability and Accountability Act compliant communication systems that will allow staff to communicate with outside providers and within the Division.
- Working on setting up State secured Wi-Fi for staff use in charting resident care and services.
- Exploring options for a new Electronic Health Record System.
- Exploring options to improve the homes' security and call light notification systems to improve resident safety.
- The Division is conducting a thorough review of organizational structure within each home to ensure efficiencies and alignment with best practices.

Statutory and Regulatory Authority

AS 44.29.020(a)(15) Duties of the Department of Health and Social Services
AS 47.55 Alaska Pioneers' Homes and Alaska Veterans' Home
AS 44.29.500 Alaska Pioneer Homes Advisory Board
7 AAC 74 Alaska Pioneers' Homes

Contact Information
<p>Contact: Marian Sweet, Administrative Services Director Phone: (907) 465-1630 E-mail: marian.sweet@alaska.gov</p>

Pioneer Homes Personal Services Information				
Authorized Positions			Personal Services Costs	
	FY2024 Management Plan	FY2025 Governor		
Full-time	414	414	Annual Salaries	27,426,340
Part-time	9	9	COLA	1,657,899
Nonpermanent	28	28	Premium Pay	1,955,892
			Annual Benefits	19,666,421
			<i>Less 4.92% Vacancy Factor</i>	(2,492,552)
			Lump Sum Premium Pay	0
Totals	451	451	Total Personal Services	48,214,000

Position Classification Summary					
Job Class Title	Anchorage	Fairbanks	Juneau	Others	Total
A/L Care Coord	3	1	1	1	6
Accounting Technician 3	1	0	0	0	1
Administrative Assistant 1	0	1	1	1	3
Administrative Assistant 3	1	1	1	3	6
Assisted Living Aide	11	13	11	27	62
Certified Nurse Aide 1	70	33	19	80	202
Certified Nurse Aide 2	5	3	1	10	19
Licensed Practical Nurse	15	4	5	8	32
Maint Gen Fman	1	1	1	3	6
Maint Gen Jrny	5	3	1	6	15
Med I/S Asst	1	0	0	2	3
Nurse 1	1	1	2	4	8
Nurse 2	9	6	1	18	34
Nurse 3	4	2	2	6	14
Office Assistant 2	1	0	0	1	2
Pharmacist (Adv Cert)	1	0	0	0	1
Pharmacist(Lead W/No Adv Cert)	1	0	0	0	1
Pharmacy Technician	5	0	0	0	5
Physical Therapist	1	0	0	0	1
Pio Hm Asst Adm	1	1	1	2	5
Pioneers Home Administrator	1	1	1	3	6
Pro Svcs Sp 1	0	1	0	1	2
Pro Svcs Sp 2	1	0	0	0	1
Pro Svcs Sp 3	1	1	1	3	6
Recreation Assistant	1	0	0	1	2
Recreation Therapist 1	0	0	0	1	1
Recreation Therapist 2	1	0	1	1	3
Supply Technician 2	1	1	0	2	4
Totals	143	74	50	184	451

Component Detail All Funds
Department of Family and Community Services

Component: Pioneer Homes (3323)
RDU: Alaska Pioneer Homes (503)

Non-Formula Component

	FY2023 Actuals	FY2024 Enrolled	FY2024 Authorized	FY2024 Management Plan	FY2025 Governor Adjusted Base	FY2025 Governor	FY2024 Management Plan vs FY2025 Governor	
1000 Personal Services	44,078.1	46,113.9	46,113.9	46,113.9	48,214.0	48,214.0	2,100.1	4.6%
2000 Travel	33.5	14.7	14.7	30.6	30.6	30.6	0.0	0.0%
3000 Services	18,364.4	23,777.6	23,777.6	23,761.7	23,747.0	23,747.0	-14.7	-0.1%
4000 Commodities	3,855.8	2,906.0	2,906.0	2,906.0	2,906.0	3,406.0	500.0	17.2%
5000 Capital Outlay	96.4	95.6	95.6	95.6	95.6	95.6	0.0	0.0%
7000 Grants, Benefits	5.4	4.8	4.8	4.8	19.5	19.5	14.7	306.3%
8000 Miscellaneous	0.0	0.0	0.0	0.0	0.0	0.0	0.0	0.0%
Totals	66,433.6	72,912.6	72,912.6	72,912.6	75,012.7	75,512.7	2,600.1	3.6%
Fund Sources:								
1002 Fed Rcpts (Fed)	2,053.5	2,590.2	2,590.2	2,590.2	2,703.6	2,703.6	113.4	4.4%
1004 Gen Fund (UGF)	2,933.8	2,697.5	2,697.5	2,697.5	2,820.4	2,820.4	122.9	4.6%
1005 GF/Prgm (DGF)	20,823.1	23,310.2	23,310.2	23,310.2	24,371.9	24,371.9	1,061.7	4.6%
1007 I/A Rcpts (Other)	38,544.4	41,929.1	41,929.1	41,929.1	42,701.9	42,701.9	772.8	1.8%
1108 Stat Desig (Other)	2,078.8	2,385.6	2,385.6	2,385.6	2,414.9	2,914.9	529.3	22.2%
Unrestricted General (UGF)	2,933.8	2,697.5	2,697.5	2,697.5	2,820.4	2,820.4	122.9	4.6%
Designated General (DGF)	20,823.1	23,310.2	23,310.2	23,310.2	24,371.9	24,371.9	1,061.7	4.6%
Other Funds	40,623.2	44,314.7	44,314.7	44,314.7	45,116.8	45,616.8	1,302.1	2.9%
Federal Funds	2,053.5	2,590.2	2,590.2	2,590.2	2,703.6	2,703.6	113.4	4.4%
Positions:								
Permanent Full Time	412	411	411	414	414	414	0	0.0%
Permanent Part Time	12	12	12	9	9	9	0	0.0%
Non Permanent	27	27	27	28	28	28	0	0.0%

Change Record Detail - Multiple Scenarios with Descriptions
Department of Family and Community Services

Component: Pioneer Homes (3323)
RDU: Alaska Pioneer Homes (503)

Scenario/Change Record Title	Trans Type	Totals	Personal Services	Travel	Services	Commodities	Capital Outlay	Grants, Benefits	Miscellaneous	Positions		NP
										PFT	PPT	
***** Changes From FY2024 Enrolled To FY2024 Authorized *****												
FY2024 Enrolled	Enrolled	72,912.6	46,113.9	14.7	23,777.6	2,906.0	95.6	4.8	0.0	411	12	27
1002 Fed Rcpts		2,590.2										
1004 Gen Fund		2,697.5										
1005 GF/Prgm		23,310.2										
1007 I/A Rcpts		41,929.1										
1108 Stat Desig		2,385.6										
Subtotal		72,912.6	46,113.9	14.7	23,777.6	2,906.0	95.6	4.8	0.0	411	12	27
***** Changes From FY2024 Authorized To FY2024 Management Plan *****												
Align Authority to Improve Elder Care	LIT	0.0	0.0	15.9	-15.9	0.0	0.0	0.0	0.0	0	0	0
Transfer authority from services to travel to continue to provide peer to peer training and improve elder centered care. The remaining personal services authority is sufficient to cover anticipated expenditures.												
Delete Non-Permanent Nurse 3	PosAdj	0.0	0.0	0.0	0.0	0.0	0.0	0.0	0.0	0	0	-1
Delete a non-permanent on-call Nurse 3 (06N2007) that is no longer needed.												
Add Non-Permanent Nurse 2 for the Juneau Pioneer Home	PosAdj	0.0	0.0	0.0	0.0	0.0	0.0	0.0	0.0	0	0	1
Add a non-permanent on-call Nurse 2 (26-N23008), range 22, located in Juneau. The Juneau Pioneer Home needs flexibility in staffing to continue to provide care for residents in the Pioneer Home while staff are out due to personal leave, vacancies, illness, etc. The non-permanent on-call position will reduce premium pay costs as nurses will not have to work overtime in the Juneau Pioneer Home to provide direct care to residents.												
Add Non-Permanent Pharmacy Technician for the Pioneer Homes Pharmacy	PosAdj	0.0	0.0	0.0	0.0	0.0	0.0	0.0	0.0	0	0	1
Add a non-permanent on-call Pharmacy Technician (26-N23017), range 12, located in Anchorage. The Pioneer Home Pharmacy needs flexibility in staffing to continue to provide medication for residents while staff are out due to personal leave, vacancies, illness, etc. The non-permanent on-call position will reduce premium pay costs as pharmacy technicians will not have to work overtime in the pharmacy to fill medications for residents.												
Change Licensed Practical Nurse/Nurse1/Nurse2 (02-7245) from Part-Time to Full-Time	PosAdj	0.0	0.0	0.0	0.0	0.0	0.0	0.0	0.0	1	-1	0
Change Licensed Practical Nurse/Nurse1/Nurse2 (02-7245) from part-time to full-time to reduce on-call and overtime hours in providing direct care to residents.												

Change Record Detail - Multiple Scenarios with Descriptions
Department of Family and Community Services

Component: Pioneer Homes (3323)
RDU: Alaska Pioneer Homes (503)

Scenario/Change Record Title	Trans Type	Totals	Personal Services	Travel	Services	Commodities	Capital Outlay	Grants, Benefits	Miscellaneous	Positions		NP
										PFT	PPT	
Change Assisted Living Aide/Certified Nursing Aide1 (02-7467) from Part-Time to Full-Time												
PosAdj		0.0	0.0	0.0	0.0	0.0	0.0	0.0	0.0	1	-1	0
Change Assisted Living Aide/Certified Nursing Aide1 (02-7467) from part-time to full-time to reduce on-call and overtime hours in providing direct care to residents.												
Change Assisted Living Aide/Certified Nursing Aide1 (06-6217) from Part-Time to Full-Time												
PosAdj		0.0	0.0	0.0	0.0	0.0	0.0	0.0	0.0	1	-1	0
Change Assisted Living Aide/Certified Nursing Aide1 (06-6217) from part-time to full-time to reduce on-call and overtime hours in providing direct care to residents.												
Subtotal		72,912.6	46,113.9	30.6	23,761.7	2,906.0	95.6	4.8	0.0	414	9	28
***** Changes From FY2024 Management Plan To FY2025 Governor Adjusted Base *****												
FY2025 Salary, Health Insurance, and PERS Rate Adjustments												
SalAdj		2,100.1	2,100.1	0.0	0.0	0.0	0.0	0.0	0.0	0	0	0
1002 Fed Rcpts	113.4											
1004 Gen Fund	122.9											
1005 GF/Prgm	1,061.7											
1007 I/A Rcpts	772.8											
1108 Stat Desig	29.3											
FY2025 Salary, Health Insurance, and PERS Rate Adjustments: \$2,100.1												
FY2025 AlaskaCare insurance from \$1,793 to \$1,908 per member per month: \$52.5												
FY2025 GGU health insurance from \$1,573.50 to \$1,579.50 per member per month: \$24.4												
FY2025 GGU 5% Cost of Living Adjustment: \$1,570.9												
FY2025 PERS Rate Adjustment from 25.10% to 26.76%: \$452.3												
Align Authority to Provide Allowances for Elders in Need												
LIT		0.0	0.0	0.0	-14.7	0.0	0.0	14.7	0.0	0	0	0
Transfer authority from services to grants to provide allowances for elders in need. The remaining services authority is sufficient to cover anticipated expenditures.												
Subtotal		75,012.7	48,214.0	30.6	23,747.0	2,906.0	95.6	19.5	0.0	414	9	28
***** Changes From FY2025 Governor Adjusted Base To FY2025 Governor *****												
Increase Statutory Designated Program Receipts for Pharmacy Billings												
Inc		500.0	0.0	0.0	0.0	500.0	0.0	0.0	0.0	0	0	0
1108 Stat Desig	500.0											

Change Record Detail - Multiple Scenarios with Descriptions
Department of Family and Community Services

Component: Pioneer Homes (3323)
RDU: Alaska Pioneer Homes (503)

Scenario/Change Record Title	Trans Type	Totals	Personal Services	Travel	Services	Commodities	Capital Outlay	Grants, Benefits	Miscellaneous	Positions		NP
										PFT	PPT	
Align statutory designated program receipt authority with anticipated revenues.												
	Totals	75,512.7	48,214.0	30.6	23,747.0	3,406.0	95.6	19.5	0.0	414	9	28

Line Item Detail (1676)
Department of Family and Community Services
Travel

Component: Pioneer Homes (3323)

Line Number	Line Name		FY2023 Actuals	FY2024 Management Plan	FY2025 Governor
2000	Travel		33.5	30.6	30.6
Object Class	Servicing Agency	Explanation	FY2023 Actuals	FY2024 Management Plan	FY2025 Governor
2000 Travel Detail Totals			33.5	30.6	30.6
2000	In-State Employee Travel	In-state employee travel costs. This includes airfare, surface transportation, lodging, meals, and incidentals.	26.2	30.6	23.3
2002	Out of State Employee Travel	Out of State Employee	7.3	0.0	7.3

Line Item Detail (1676)
Department of Family and Community Services
Services

Component: Pioneer Homes (3323)

Line Number	Line Name		FY2023 Actuals	FY2024 Management Plan	FY2025 Governor
3000	Services		18,364.4	23,761.7	23,747.0
Object Class	Servicing Agency	Explanation	FY2023 Actuals	FY2024 Management Plan	FY2025 Governor
3000 Services Detail Totals			18,364.4	23,761.7	23,747.0
3000	Education Services	Training, conference fees, and memberships to professional organizations.	41.9	25.0	25.0
3001	Financial Services	Costs to electronically transmit pharmacy charges to third party insurance companies.	186.4	190.0	190.0
3003	Information Technology	Information technology consulting, software licensing, and software maintenance.	383.3	120.0	120.0
3004	Telecommunications	Equipment and telephone charges including local, long distance, and cellular phone charges.	392.0	200.0	200.0
3005	Health Services	Testing, TB	42.3	8.3	8.3
3006	Delivery Services	Freight and courier costs.	69.8	45.0	40.0
3007	Advertising and Promotions	Promotion and recruitment	6.4	5.0	0.5
3008	Utilities	Electric, water sewer, garbage, fuel	2,335.9	3,350.3	3,135.6
3009	Structure/Infrastructure/Land	Office repairs for plumbing, electrical and carpet cleaning. Also includes costs for storage of archived records and meeting room rentals.	4,158.1	750.0	2,114.1
3010	Equipment/Machinery	Maintenance agreements and minor parts for office equipment.	107.5	184.0	115.0
3011	Other Services	Program management consulting, printing forms, annual reports, brochures, and pamphlets.	8,444.2	16,900.6	15,820.0
3017	Inter-Agency Information Technology	Admin - Department-wide RSA with Department of Health for	1,013.1	443.1	443.1

Line Item Detail (1676)
Department of Family and Community Services
Services

Component: Pioneer Homes (3323)

Object Class	Servicing Agency	Explanation	FY2023 Actuals	FY2024 Management Plan	FY2025 Governor
3000 Services Detail Totals			18,364.4	23,761.7	23,747.0
	Non-Telecommunications	EPR			
3018	Inter-Agency Information Technology Telecommunications	Admin - Department-wide RSA with Department of Administration for computer services.	38.1	75.0	75.0
3019	Inter-Agency Storage	FCS - Facilities Management (3331) Storage	0.0	21.4	21.4
3021	Inter-Agency Mail	Admin - Department-wide RSA with the Department of Administration for central mailroom services.	25.0	15.0	15.0
3022	Inter-Agency Human Resources	Admin - Department-wide RSA with the Department of Administration, Division of Personnel for human resources support.	29.1	400.4	400.4
3024	Inter-Agency Legal	Law - Department-wide RSA with the Department of Law for legal consultation and support.	13.2	30.4	30.4
3026	Inter-Agency Insurance	Admin - Department-wide RSA with the Department of Administration for risk management.	205.5	205.0	205.0
3027	Inter-Agency Financial	Admin - Department-wide Alaska EHealth Network	30.0	50.0	50.0
3028	Inter-Agency Americans with Disabilities Act Compliance	Admin - Department-wide RSA with the Department of Administration for Americans with Disabilities Act services.	8.9	14.0	14.0
3032	Inter-Agency Health	H&SS - Department-wide RSA with the Department of Health, Health Care Services, Certification and Licensing to make determinations from the results of state and federal criminal background checks on Pioneer Home employees.	0.0	0.0	20.0
3032	Inter-Agency Health	Health - Department-wide Inter-Agency	0.0	25.0	0.0
3036	Inter-Agency Safety	H&SS - Department-wide RSA with Department of Health, Residential Licensing	0.0	0.0	0.0
3036	Inter-Agency Safety	Health - Department-wide Inter-Agency	19.6	0.0	0.0
3037	State Equipment Fleet	Trans - Department-wide Vehicle maintenance and repair	118.9	120.0	120.0
3038	Inter-Agency	Admin - Department-wide Inter-Agency	86.0	0.0	0.0

Line Item Detail (1676)
Department of Family and Community Services
Services

Component: Pioneer Homes (3323)

Object Class	Servicing Agency	Explanation	FY2023 Actuals	FY2024 Management Plan	FY2025 Governor
3000 Services Detail Totals			18,364.4	23,761.7	23,747.0
3038	Management/Consulting Inter-Agency Management/Consulting	FCS - Administrative Services (3305) RSA with the Department of Health and Social Services for the Commissioner's Office, Office of Program Review, Finance and Management Services, Grants and Contracts and Information Technology support.	116.2	135.0	135.0
3038	Inter-Agency Management/Consulting	FCS - Commissioner's Office (3304) RSA with Commissioner's Office for legislative actions, policy and procedure for the Department, and coordination for Department-wide services.	52.9	50.0	50.0
3038	Inter-Agency Management/Consulting	FCS - Information Technology Services (3328) Telecom Services	374.1	375.0	375.0
3038	Inter-Agency Management/Consulting	FCS - Public Affairs (3329) RSA with the Department of Health for Public Affairs Services.	38.0	20.0	20.0
3038	Inter-Agency Management/Consulting	Gov - Department-wide Inter-agency management/consulting services.	28.0	0.0	0.0
3038	Inter-Agency Management/Consulting	Labor - Department-wide Demographic / population estimates from Department of Labor.	0.0	4.2	4.2

Line Item Detail (1676)
Department of Family and Community Services
Commodities

Component: Pioneer Homes (3323)

Line Number	Line Name		FY2023 Actuals	FY2024 Management Plan	FY2025 Governor
4000	Commodities		3,855.8	2,906.0	3,406.0
Object Class	Servicing Agency	Explanation	FY2023 Actuals	FY2024 Management Plan	FY2025 Governor
4000 Commodities Detail Totals			3,855.8	2,906.0	3,406.0
4000	Business	Books, educational materials, office equipment, furniture, consumable office supplies, reference books, and subscriptions to business periodicals.	621.6	195.0	500.0
4001	Agricultural	Agricultural supplies for landscaping and gardening insecticides, pesticides, plants, soil, fertilizer, and tools.	3.4	5.0	5.0
4002	Household/Institutional	Food supplies for resident activities, cleaning supplies for laundry and janitorial, non-food supplies, incontinent products, recreational/activity supplies, and other operational supplies	126.7	500.0	127.0
4003	Scientific and Medical	Medications dispensed to Pioneer Home residents, medication packaging supplies, animal food for pets of the Pioneer Homes, medical instruments, and non-lab medical supplies.	2,645.9	1,752.0	2,327.2
4004	Safety	Resident monitoring systems, equipment and supplies, non-medical gloves, and other non-maintenance safety equipment.	176.7	165.0	165.0
4005	Building Materials	Building Materials	2.9	0.0	0.0
4006	Signs and Markers	Signs and Markers	0.1	0.0	0.0
4011	Electrical	Repair and maintenance supply	18.7	15.0	20.0

Line Item Detail (1676)
Department of Family and Community Services
Commodities

Component: Pioneer Homes (3323)

Object Class	Servicing Agency	Explanation	FY2023 Actuals	FY2024 Management Plan	FY2025 Governor
4000 Commodities Detail Totals			3,855.8	2,906.0	3,406.0
		costs for building materials, signage, electrical,			
4012	Plumbing	Repair and maintenance supply costs for building materials, plumbing,	59.3	33.2	60.0
4013	Lube Oils/Grease/Solvents	Lube Oils/Grease/Solvents	0.9	0.0	0.0
4014	Bottled Gas	Bottled Gas	0.1	0.0	0.0
4015	Parts and Supplies	Repair and maintenance supply costs for building materials, small tools, and minor equipment.	177.9	210.0	180.0
4016	Paint/Preservatives	Repair and maintenance supply costs for building materials lube oils, grease, solvents, paint, preservatives, surface chemicals.	6.4	8.0	6.5
4017	Sand	Sand for parking lot.	0.9	1.0	1.0
4018	Surface Chemicals	Repair and maintenance supply costs for building lube oils, grease, surface chemicals	4.1	1.8	4.1
4019	Small Tools/Minor Equipment	Repair and maintenance supply costs for small tools and minor equipment.	10.0	15.0	10.0
4020	Equipment Fuel	This includes costs for unleaded vehicle fuel and diesel.	0.2	5.0	0.2

Line Item Detail (1676)
Department of Family and Community Services
Capital Outlay

Component: Pioneer Homes (3323)

Line Number	Line Name		FY2023 Actuals	FY2024 Management Plan	FY2025 Governor
5000	Capital Outlay		96.4	95.6	95.6
Object Class	Servicing Agency	Explanation	FY2023 Actuals	FY2024 Management Plan	FY2025 Governor
5000 Capital Outlay Detail Totals			96.4	95.6	95.6
5004	Equipment	Medical and scientific equipment, such as suction machines and electrocardiographs. This also includes maintenance machinery and equipment, safety equipment, household and institutional equipment, and other equipment valued over \$5.0.	96.4	95.6	95.6

Line Item Detail (1676)
Department of Family and Community Services
Grants, Benefits

Component: Pioneer Homes (3323)

Line Number	Line Name		FY2023 Actuals	FY2024 Management Plan	FY2025 Governor
7000	Grants, Benefits		5.4	4.8	19.5
Object Class	Servicing Agency	Explanation	FY2023 Actuals	FY2024 Management Plan	FY2025 Governor
		7000 Grants, Benefits Detail Totals	5.4	4.8	19.5
7002	Benefits	Personal allowance benefits paid to indigent Pioneer Home residents. A maximum of \$200.00 a month is sent to residents without any source of income.	5.4	4.8	19.5

Revenue Detail (1681)
Department of Family and Community Services

Component: Pioneer Homes (3323)

Revenue Type (OMB Fund Code) Revenue Source	Component	Comment	FY2023 Actuals	FY2024 Management Plan	FY2025 Governor
5002 Fed Rcpts (1002 Fed Rcpts)			2,053.5	2,590.2	2,703.6
5002 Federal General Government - Miscellaneous Grants		The Palmer Veteran's and Pioneer Home is certified by the Veteran's Administration as a state Veteran's Home. The division bills the Veteran's Administration \$43.32 per day for services provided to qualifying Veteran residents. The Palmer Veteran's and Pioneer Home is certified by the Veteran's Administration as a state Veteran's Home. The division bills the Veteran's Administration \$43.32 per day for services provided to qualifying Veteran residents.	2,053.5	2,590.2	2,703.6
5005 GF/Prgm (1005 GF/Prgm)			20,823.1	23,310.2	24,371.9
5115 Program Receipts Health & Human Svcs - Charges for Services		The Pioneer Home's authority to collect restricted program receipts is found in AS 47.55.030. Residents are billed monthly for room, board, and ancillary charges. The Pioneer Home's authority to collect restricted program receipts is found in AS 47.55.030. Residents are billed monthly for room, board, and ancillary charges.	20,823.1	23,310.2	24,371.9
5007 I/A Rcpts (1007 I/A Rcpts)			38,544.4	41,929.1	42,701.9
5301 Inter-Agency Receipts		Interagency receipt authority resulting from billing Medicaid for long-term waiver services provided to Medicaid-eligible Pioneer Home residents. The federal receipts are received as interagency receipts from the Division of Senior and	0.0	7,804.8	8,532.6

Revenue Detail (1681)
Department of Family and Community Services

Component: Pioneer Homes (3323)

Revenue Type (OMB Fund Code) Revenue Source	Component	Comment	FY2023 Actuals	FY2024 Management Plan	FY2025 Governor
5301 Inter-Agency Receipts	FCS - APH Payment Assistance (3327)	Disabilities Services. Interagency receipt authority resulting from billing Medicaid for long-term waiver services provided to Medicaid-eligible Pioneer Home residents. The federal receipts are received as interagency receipts from the Division of Senior and Disabilities Services. Interagency receipt authority to draw from the Payment Assistance Component as needed to subsidize elders' resources to meet the need of care found in AS 47.55.020 Interagency receipt authority to draw from the Payment Assistance Component as needed to subsidize elders' resources to meet the need of care found in AS 47.55.020	29,598.8	33,964.3	33,964.3
5301 Inter-Agency Receipts	FCS - Juvenile Justice Health Care (3326)	Pharmaceutical Products Provided to DJJ	140.1	100.0	145.0
5301 Inter-Agency Receipts	Health - Department-wide	Pharmaceutical Services for Division of Juvenile Justice Youth Inter-Agency	8,781.5	0.0	0.0
5301 Inter-Agency Receipts	Labor - Department-wide	Certified Nurse Aide Apprenticeship Program Certified Nurse Aide Apprenticeship Program	24.0	60.0	60.0
5302 Inter-Agency Receipts - Prior Year Reimbursement Recovery	H&SS - Department-wide	Prior year reimbursement recovery.	0.0	0.0	0.0
5108 Stat Desig (1108 Stat Desig)			2,078.8	2,385.6	2,914.9
5204 Statutory Dsgntd Prgm Rcpts Hlth & Hmn Svcs - Chrgs for Svcs		These receipts represent resident and third-party insurance payments for pharmaceuticals dispensed from the centralized Pioneer Home Pharmacy.	2,078.8	2,385.6	2,914.9

Revenue Detail (1681)
Department of Family and Community Services

Component: Pioneer Homes (3323)

Revenue Type (OMB Fund Code) Revenue Source	Component	Comment	FY2023 Actuals	FY2024 Management Plan	FY2025 Governor
		These receipts represent resident and third-party insurance payments for pharmaceuticals dispensed from the centralized Pioneer Home Pharmacy.			
5265 COVID Fed (1265 COVID Fed)			0.0	0.0	0.0
5028 Federal COVID Stimulus - Miscellaneous Grants		CARES Act Provider Relief Fund CARES Act Provider Relief Fund	0.0	0.0	0.0
6004 Gen Fund (1004 Gen Fund)			0.0	2,697.5	2,820.4
6047 General Fund - Miscellaneous		General Fund General Fund	0.0	2,697.5	2,820.4

Inter-Agency Services (1682)
Department of Family and Community Services

Component: Pioneer Homes (3323)

	FY2023 Actuals	FY2024 Management Plan	FY2025 Governor
Component Totals	2,196.6	1,983.5	1,978.5
With Department of Administration	1,435.7	1,202.5	1,202.5
With Department of Family and Community Services	581.2	601.4	601.4
With Department of Law	13.2	30.4	30.4
With Department of Health & Social Services	0.0	0.0	20.0
With Department of Health	19.6	25.0	0.0
With Department of Transportation and Public Facilities	118.9	120.0	120.0
With Office of the Governor	28.0	0.0	0.0
With Department of Labor and Workforce Development	0.0	4.2	4.2

Object Class	Servicing Agency	Explanation	FY2023 Actuals	FY2024 Management Plan	FY2025 Governor
3017	Inter-Agency Information Technology Non-Telecommunications	Admin - Department-wide RSA with Department of Health for EPR	1,013.1	443.1	443.1
3018	Inter-Agency Information Technology Telecommunications	Admin - Department-wide RSA with Department of Administration for computer services.	38.1	75.0	75.0
3019	Inter-Agency Storage	FCS - Facilities Management (3331) Storage	0.0	21.4	21.4
3021	Inter-Agency Mail	Admin - Department-wide RSA with the Department of Administration for central mailroom services.	25.0	15.0	15.0
3022	Inter-Agency Human Resources	Admin - Department-wide RSA with the Department of Administration, Division of Personnel for human resources support.	29.1	400.4	400.4
3024	Inter-Agency Legal	Law - Department-wide RSA with the Department of Law for legal consultation and support.	13.2	30.4	30.4
3026	Inter-Agency Insurance	Admin - Department-wide RSA with the Department of Administration for risk management.	205.5	205.0	205.0
3027	Inter-Agency Financial	Admin - Department-wide Alaska EHealth Network	30.0	50.0	50.0
3028	Inter-Agency Americans with Disabilities Act Compliance	Admin - Department-wide RSA with the Department of Administration for Americans with	8.9	14.0	14.0

Inter-Agency Services (1682)
Department of Family and Community Services

Component: Pioneer Homes (3323)

Object Class		Servicing Agency	Explanation	FY2023 Actuals	FY2024 Management Plan	FY2025 Governor
3032	Inter-Agency Health	H&SS - Department-wide	Disabilities Act services. RSA with the Department of Health, Health Care Services, Certification and Licensing to make determinations from the results of state and federal criminal background checks on Pioneer Home employees.	0.0	0.0	20.0
3032	Inter-Agency Health	Health - Department-wide	Inter-Agency	0.0	25.0	0.0
3036	Inter-Agency Safety	Health - Department-wide	Inter-Agency	19.6	0.0	0.0
3037	State Equipment Fleet	Trans - Department-wide	Vehicle maintenance and repair	118.9	120.0	120.0
3038	Inter-Agency Management/Consulting	Admin - Department-wide	Inter-Agency	86.0	0.0	0.0
3038	Inter-Agency Management/Consulting	FCS - Administrative Services (3305)	RSA with the Department of Health and Social Services for the Commissioner's Office, Office of Program Review, Finance and Management Services, Grants and Contracts and Information Technology support.	116.2	135.0	135.0
3038	Inter-Agency Management/Consulting	FCS - Commissioner's Office (3304)	RSA with Commissioner's Office for legislative actions, policy and procedure for the Department, and coordination for Department-wide services.	52.9	50.0	50.0
3038	Inter-Agency Management/Consulting	FCS - Information Technology Services (3328)	Telecom Services	374.1	375.0	375.0
3038	Inter-Agency Management/Consulting	FCS - Public Affairs (3329)	RSA with the Department of Health for Public Affairs Services.	38.0	20.0	20.0
3038	Inter-Agency Management/Consulting	Gov - Department-wide	Inter-agency management/consulting services.	28.0	0.0	0.0
3038	Inter-Agency Management/Consulting	Labor - Department-wide	Demographic / population estimates from Department of Labor.	0.0	4.2	4.2

Personal Services Expenditure Detail
Department of Family and Community Services

Scenario: FY2025 Governor (20959)
Component: Pioneer Homes (3323)
RDU: Alaska Pioneer Homes (503)

PCN	Job Class Title	Time Status	Retire Code	Barg Unit	Location	Salary Sched	Range / Step	Comp Months	Split / Count	Annual Salaries	COLA	Premium Pay	Annual Benefits	Total Costs	UGF Amount
02-7007	Pioneers Home Administrator	FT	A	XE	Palmer	N00	23D / E	12.0		99,226	0	0	63,839	163,065	6,800
02-7016	Assisted Living Aide	FT	A	GP	Juneau	105	9D / E	12.0		42,152	3,365	5,500	38,727	89,744	5,474
02-7100	Pioneers Home Administrator	FT	A	XE	Sitka	N05	23J	12.0		113,451	0	0	69,707	183,158	11,356
02-7101	Administrative Assistant 3	FT	A	SS	Sitka	105	15A / B	12.0		59,093	0	0	47,428	106,521	6,604
02-7102	Supply Technician 2	FT	A	GP	Sitka	205	12B / C	12.0		45,849	3,238	0	37,983	87,070	5,398
02-7104	Maint Gen Fman	FT	A	LL	Sitka	1BB	52J / K	12.0		72,295	0	2,000	49,919	124,214	7,701
02-7105	Certified Nurse Aide 2	FT	A	GP	Sitka	105	12Q / R	12.0		72,257	5,456	5,000	50,939	133,652	8,286
02-7106	Nurse 2	FT	A	GP	Sitka	105	22C / D	12.0		97,734	7,256	5,000	61,448	171,438	10,629
02-7108	Recreation Therapist 1	FT	A	SS	Sitka	105	14L / M	12.0		71,001	0	0	52,341	123,342	7,647
02-7109	Assisted Living Aide	FT	A	GP	Fairbanks	103	9A / B	12.0		37,313	2,988	5,000	36,525	81,826	5,073
02-7110	Nurse 3	FT	A	SS	Sitka	105	24D / E	12.0		118,643	0	5,000	74,055	197,698	8,303
02-7111	Nurse 3	FT	A	SS	Sitka	105	24D / E	12.0		118,643	0	5,000	74,055	197,698	8,303
02-7112	Nurse 2	FT	A	GP	Sitka	105	22D / E	12.0		100,065	7,420	5,000	62,410	174,895	10,844
02-7114	Nurse 2	FT	A	GP	Sitka	105	22D / E	12.0		99,323	7,368	5,000	62,104	173,795	10,775
02-7117	Nurse 1	FT	A	GP	Sitka	105	21D / E	12.0		91,894	6,843	5,000	59,039	162,776	10,092
02-7118	Nurse 2	FT	A	GP	Sitka	105	22C / D	12.0		97,734	7,256	5,000	61,448	171,438	10,286
02-7119	Certified Nurse Aide 1	FT	A	GP	Ketchikan	100	11D / E	12.0		45,455	3,599	5,500	40,090	94,644	5,868
02-7120	Certified Nurse Aide 1	FT	A	GP	Sitka	105	11Q	12.0		66,378	5,041	5,000	48,514	124,933	7,746
02-7121	Certified Nurse Aide 2	FT	A	GP	Palmer	100	12G / J	12.0		52,624	3,717	0	40,778	97,119	4,050
02-7122	Certified Nurse Aide 1	FT	A	GP	Sitka	105	11N / O	12.0		60,540	4,664	5,500	46,312	117,016	7,255
02-7124	Assisted Living Aide	FT	N	GP	Sitka	105	9B / C	12.0		39,683	2,587	5,500	25,618	73,388	4,550
02-7125	Certified Nurse Aide 1	FT	A	GP	Sitka	105	11N	12.0		60,294	4,647	5,500	46,211	116,652	7,232
02-7126	Certified Nurse Aide 1	FT	A	GP	Fairbanks	103	11B / C	12.0		43,992	3,460	5,000	39,280	91,732	5,687
02-7127	Certified Nurse Aide 1	FT	A	GP	Sitka	105	11D / E	12.0		46,836	3,661	5,000	40,453	95,950	5,949
02-7128	Certified Nurse Aide 1	FT	A	GP	Sitka	105	11N	12.0		60,294	4,611	5,000	46,004	115,909	7,186
02-7129	Assisted Living Aide	FT	A	GP	Sitka	105	9C / D	12.0		40,970	3,247	5,000	38,033	87,250	5,410
02-7130	Certified Nurse Aide 1	FT	A	GP	Sitka	105	11M	12.0		58,403	4,478	5,000	45,224	113,105	7,013
02-7131	Certified Nurse Aide 1	FT	A	GP	Sitka	105	11T / U	12.0		74,237	5,596	5,000	51,756	136,589	8,469
02-7132	Certified Nurse Aide 2	FT	A	GP	Sitka	105	12A / A	12.0		44,850	3,556	5,500	39,840	93,746	5,812
02-7133	Certified Nurse Aide 1	FT	A	GP	Sitka	105	11O	12.0		62,264	4,786	5,500	47,023	119,573	7,414
02-7134	Certified Nurse Aide 1	FT	A	GP	Sitka	105	11R / S	12.0		68,803	5,248	5,500	49,721	129,272	8,015
02-7135	Certified Nurse Aide 1	FT	A	GP	Sitka	105	11Q	12.0		66,378	5,076	5,500	48,720	125,674	7,792
02-7136	Certified Nurse Aide 1	FT	A	GP	Sitka	105	11K	12.0		54,776	4,257	5,500	43,935	108,468	6,725
02-7137	Certified Nurse Aide 2	FT	A	GP	Fairbanks	103	12O	12.0		65,364	5,005	5,500	48,302	124,171	7,699
02-7138	Certified Nurse Aide 1	FT	A	GP	Sitka	105	11J / K	12.0		53,560	4,224	6,250	43,742	107,776	6,682
02-7139	A/L Care Coord	FT	A	GP	Anchorage	100	17B / C	12.0		64,194	4,975	6,250	48,129	123,548	7,660
02-7140	Certified Nurse Aide 1	FT	A	GP	Sitka	105	11P / Q	12.0		65,248	5,050	6,250	48,564	125,112	7,757

Note: If a position is split, an asterisk (*) will appear in the Split/Count column. If the split position is also counted in the component, two asterisks (**) will appear in this column. [No valid job title] appearing in the Job Class Title indicates that the PCN has an invalid class code or invalid range for the class code effective date of this scenario.

Personal Services Expenditure Detail
Department of Family and Community Services

Scenario: FY2025 Governor (20959)
Component: Pioneer Homes (3323)
RDU: Alaska Pioneer Homes (503)

PCN	Job Class Title	Time Status	Retire Code	Barg Unit	Location	Salary Sched	Range / Step	Comp Months	Split / Count	Annual Salaries	COLA	Premium Pay	Annual Benefits	Total Costs	UGF Amount
02-7141	Certified Nurse Aide 2	FT	A	GP	Sitka	105	12A / B	12.0		46,215	3,705	6,250	40,712	96,882	6,007
02-7142	Pro Svcs Sp 3	FT	A	GP	Sitka	105	19G / J	12.0		88,428	6,245	0	55,547	150,220	9,314
02-7143	Certified Nurse Aide 1	FT	A	GP	Sitka	105	11U	12.0		75,426	5,680	5,000	52,246	138,352	8,578
02-7144	Certified Nurse Aide 1	FT	A	GP	Sitka	105	11F / G	12.0		49,860	3,874	5,000	41,700	100,434	6,227
02-7146	Maint Gen Jrny	FT	A	LL	Sitka	1BB	54Q	12.0		79,337	0	2,000	52,824	134,161	8,318
02-7148	Maint Gen Jrny	FT	A	LL	Sitka	1BB	54B / C	12.0		53,254	0	2,000	42,065	97,319	6,034
02-7152	Maint Gen Jrny	FT	A	LL	Sitka	1BB	54R	12.0		82,269	0	2,000	54,034	138,303	8,575
02-7158	Nurse 2	FT	A	GP	Sitka	105	22E / F	12.0		104,637	7,743	5,000	64,296	181,676	11,264
02-7159	Assisted Living Aide	FT	A	GP	Sitka	105	9B / C	12.0		39,683	3,156	5,000	37,502	85,341	5,291
02-7164	Certified Nurse Aide 1	FT	A	GP	Sitka	105	11J / K	12.0		54,776	3,869	0	41,666	100,311	6,219
02-7165	Certified Nurse Aide 1	FT	A	GP	Anchorage	100	11A / B	12.0		44,150	3,118	0	37,283	84,551	5,242
02-7170	Assisted Living Aide	PT	A	GP	Ketchikan	100	9B / C	6.0		18,896	1,335	0	12,562	32,793	2,033
02-7176	Assisted Living Aide	FT	A	GP	Sitka	105	9B / C	12.0		39,683	3,156	5,000	37,502	85,341	5,291
02-7177	Recreation Assistant	FT	A	GP	Sitka	105	11J / K	12.0		54,204	3,828	0	41,430	99,462	6,167
02-7178	Certified Nurse Aide 1	FT	A	GP	Sitka	105	11Q	12.0		66,378	5,041	5,000	48,514	124,933	7,746
02-7180	Assisted Living Aide	FT	A	GP	Sitka	105	9C / D	12.0		40,777	3,233	5,000	37,954	86,964	5,392
02-7197	Med I/S Asst	FT	A	GP	Sitka	105	10J	12.0		49,725	3,512	0	39,582	92,819	5,755
02-7200	Pioneers Home Administrator	FT	A	XE	Fairbanks	N03	23K / L	12.0		116,000	0	0	70,759	186,759	11,579
02-7201	Assisted Living Aide	FT	A	GP	Fairbanks	103	9A / A	12.0		36,719	2,946	5,000	36,280	80,945	5,019
02-7202	Administrative Assistant 3	FT	A	SS	Fairbanks	103	15E / F	12.0		66,685	0	0	50,560	117,245	7,269
02-7203	Assisted Living Aide	FT	A	GP	Fairbanks	103	9C / D	12.0		40,190	3,192	5,000	37,712	86,094	5,338
02-7204	Supply Technician 2	FT	A	GP	Fairbanks	103	12C / D	12.0		48,042	3,393	0	38,888	90,323	5,600
02-7205	Certified Nurse Aide 1	FT	A	GP	Fairbanks	103	11B / C	12.0		43,992	3,460	5,000	39,280	91,732	5,687
02-7207	Pro Svcs Sp 1	FT	A	GP	Fairbanks	103	15D / E	12.0		61,464	4,341	0	44,425	110,230	6,834
02-7208	A/L Care Coord	FT	A	GP	Fairbanks	103	17B / C	12.0		66,125	5,023	5,000	48,410	124,558	7,723
02-7209	Certified Nurse Aide 1	FT	A	GP	Fairbanks	103	11F / G	12.0		49,699	3,863	5,000	41,634	100,196	6,212
02-7210	Certified Nurse Aide 1	FT	A	GP	Fairbanks	103	11A / B	12.0		42,071	3,324	5,000	38,487	88,882	5,511
02-7211	Nurse 2	FT	A	GP	Fairbanks	103	22D / E	12.0		99,002	7,345	5,000	61,971	173,318	10,746
02-7212	Nurse 2	FT	A	GP	Fairbanks	103	22A / B	12.0		89,681	6,687	5,000	58,127	159,495	9,889
02-7213	Nurse 3	FT	A	GP	Fairbanks	103	24O	12.0		149,019	10,878	5,000	82,603	247,500	15,345
02-7214	Certified Nurse Aide 1	FT	A	GP	Anchorage	100	11A / B	12.0		41,399	3,277	5,000	38,210	87,886	5,449
02-7215	Certified Nurse Aide 1	FT	A	GP	Fairbanks	103	11A / B	12.0		42,647	3,365	5,000	38,725	89,737	5,564
02-7216	Nurse 3	FT	A	GP	Fairbanks	103	24D / E	12.0		113,763	8,388	5,000	68,060	195,211	11,713
02-7217	Nurse 2	FT	A	GP	Fairbanks	103	22J	12.0		110,429	8,152	5,000	66,685	190,266	11,797
02-7218	Licensed Practical Nurse	FT	A	GP	Fairbanks	103	17G	12.0		75,621	5,694	5,000	52,327	138,642	8,596
02-7219	Certified Nurse Aide 1	FT	A	GP	Fairbanks	103	11D / E	12.0		46,820	3,660	5,000	40,446	95,926	5,947
02-7220	Assisted Living Aide	FT	A	GP	Fairbanks	103	9A / B	12.0		37,908	3,030	5,000	36,770	82,708	5,128
02-7221	Licensed Practical Nurse	FT	A	GP	Fairbanks	103	17E / F	12.0		73,262	5,527	5,000	51,354	135,143	8,379

Note: If a position is split, an asterisk (*) will appear in the Split/Count column. If the split position is also counted in the component, two asterisks (**) will appear in this column. [No valid job title] appearing in the Job Class Title indicates that the PCN has an invalid class code or invalid range for the class code effective date of this scenario.

Personal Services Expenditure Detail
Department of Family and Community Services

Scenario: FY2025 Governor (20959)
Component: Pioneer Homes (3323)
RDU: Alaska Pioneer Homes (503)

PCN	Job Class Title	Time Status	Retire Code	Barg Unit	Location	Salary Sched	Range / Step	Comp Months	Split / Count	Annual Salaries	COLA	Premium Pay	Annual Benefits	Total Costs	UGF Amount
02-7222	Assisted Living Aide	FT	A	GP	Fairbanks	103	9B / C	12.0		38,922	3,102	5,000	37,188	84,212	5,221
02-7223	Nurse 2	FT	A	GP	Fairbanks	103	22B / C	12.0		92,489	6,885	5,000	59,285	163,659	10,147
02-7224	Certified Nurse Aide 1	FT	A	GP	Fairbanks	103	11B / C	12.0		43,992	3,460	5,000	39,280	91,732	5,687
02-7225	Assisted Living Aide	FT	A	GP	Fairbanks	103	9A / B	12.0		37,313	2,988	5,000	36,525	81,826	5,073
02-7226	Pro Svcs Sp 3	FT	A	SS	Fairbanks	503	19R	12.0		115,565	0	0	70,723	186,288	11,550
02-7227	Nurse 2	FT	A	GP	Fairbanks	103	22K	12.0		114,017	8,406	5,000	68,165	195,588	11,735
02-7228	Licensed Practical Nurse	FT	A	GP	Fairbanks	103	17D / E	12.0		70,824	5,355	5,000	50,348	131,527	8,155
02-7229	Certified Nurse Aide 1	FT	A	GP	Fairbanks	103	11E / F	12.0		48,302	3,764	5,000	41,058	98,124	6,084
02-7230	Certified Nurse Aide 1	FT	A	GP	Fairbanks	103	11A / B	12.0		42,647	3,365	5,000	38,725	89,737	5,564
02-7231	Certified Nurse Aide 1	FT	A	GP	Fairbanks	103	11A / B	12.0		42,647	3,365	5,000	38,725	89,737	5,564
02-7233	Assisted Living Aide	FT	A	GP	Fairbanks	103	9A / B	12.0		37,908	3,066	5,500	36,976	83,450	5,174
02-7234	Certified Nurse Aide 1	FT	A	GP	Fairbanks	103	11A / B	12.0		42,647	3,400	5,500	38,931	90,478	5,610
02-7235	Certified Nurse Aide 1	FT	A	GP	Fairbanks	103	11D / E	12.0		46,659	3,684	5,500	40,586	96,429	5,979
02-7236	Certified Nurse Aide 1	FT	A	GP	Fairbanks	103	11A / B	12.0		42,647	3,400	5,500	38,931	90,478	5,610
02-7237	Certified Nurse Aide 1	FT	A	GP	Fairbanks	103	11A / B	12.0		42,071	3,360	5,500	38,694	89,625	5,557
02-7238	Assisted Living Aide	FT	A	GP	Fairbanks	103	9A / B	12.0		37,908	3,066	5,500	36,976	83,450	5,174
02-7240	Certified Nurse Aide 1	FT	A	GP	Fairbanks	103	11A / B	12.0		42,647	3,400	5,500	38,931	90,478	5,610
02-7241	Certified Nurse Aide 1	FT	A	GP	Fairbanks	103	11Q / R	12.0		65,374	5,005	5,500	48,306	124,185	7,700
02-7244	Certified Nurse Aide 1	FT	A	GP	Juneau	105	11O	12.0		62,264	4,786	5,500	47,023	119,573	7,414
02-7245	Nurse 1	FT	A	GP	Fairbanks	103	21B / C	12.0		94,813	6,696	0	58,181	159,690	9,901
02-7246	Certified Nurse Aide 1	FT	A	GP	Fairbanks	103	11B / C	12.0		43,992	3,460	5,000	39,280	91,732	5,687
02-7247	Assisted Living Aide	FT	A	GP	Fairbanks	103	9B / C	12.0		38,922	3,102	5,000	37,188	84,212	5,221
02-7249	Certified Nurse Aide 1	FT	A	GP	Fairbanks	103	11B / C	12.0		43,544	3,428	5,000	39,095	91,067	5,646
02-7251	Maint Gen Fman	FT	A	LL	Fairbanks	1EE	52Q	12.0		93,270	0	2,000	58,571	153,841	9,538
02-7252	Certified Nurse Aide 1	FT	A	GP	Fairbanks	103	11B / C	12.0		43,992	3,460	5,000	39,280	91,732	5,687
02-7256	Maint Gen Jrny	FT	A	LL	Fairbanks	1EE	54O	12.0		76,737	0	2,000	51,752	130,489	8,090
02-7265	Maint Gen Jrny	FT	A	LL	Fairbanks	1EE	54F	12.0		62,305	0	2,000	45,798	110,103	6,826
02-7270	Certified Nurse Aide 1	FT	A	GP	Fairbanks	103	11R / S	12.0		67,308	5,107	5,000	48,898	126,313	7,831
02-7276	Certified Nurse Aide 1	FT	A	GP	Fairbanks	103	11A / B	12.0		42,071	3,324	5,000	38,487	88,882	5,511
02-7284	Administrative Assistant 1	FT	A	GP	Fairbanks	103	12B / C	12.0		46,820	3,660	5,000	40,446	95,926	5,947
02-7290	Maint Gen Jrny	FT	A	LL	Fairbanks	1EE	54B / C	12.0		56,565	0	2,000	43,431	101,996	6,324
02-7298	Assisted Living Aide	FT	A	GP	Fairbanks	103	9A / B	12.0		37,908	3,030	5,000	36,770	82,708	5,128
02-7302	Assisted Living Aide	FT	A	GP	Anchorage	100	9B / C	12.0		37,567	2,653	0	34,567	74,787	4,637
02-7303	Administrative Assistant 3	FT	A	SS	Palmer	100	15N	12.0		75,962	0	0	54,387	130,349	5,436
02-7304	Certified Nurse Aide 1	PT	A	GP	Palmer	100	11A	6.0		20,144	1,423	0	13,077	34,644	1,445
02-7305	Certified Nurse Aide 1	FT	A	GP	Palmer	100	11J / K	12.0		51,207	3,970	5,000	42,256	102,433	4,272
02-7306	Licensed Practical Nurse	FT	A	GP	Palmer	100	17E / F	12.0		71,136	5,377	5,000	50,477	131,990	5,504
02-7307	Certified Nurse Aide 1	FT	A	GP	Palmer	100	11Q / R	12.0		64,669	4,920	5,000	47,809	122,398	5,104

Note: If a position is split, an asterisk (*) will appear in the Split/Count column. If the split position is also counted in the component, two asterisks (**) will appear in this column. [No valid job title] appearing in the Job Class Title indicates that the PCN has an invalid class code or invalid range for the class code effective date of this scenario.

Personal Services Expenditure Detail
Department of Family and Community Services

Scenario: FY2025 Governor (20959)
Component: Pioneer Homes (3323)
RDU: Alaska Pioneer Homes (503)

PCN	Job Class Title	Time Status	Retire Code	Barg Unit	Location	Salary Sched	Range / Step	Comp Months	Split / Count	Annual Salaries	COLA	Premium Pay	Annual Benefits	Total Costs	UGF Amount
02-7308	Nurse 2	FT	A	GP	Palmer	100	22D / E	12.0		96,116	7,141	5,000	60,781	169,038	7,049
02-7309	Certified Nurse Aide 1	FT	A	GP	Palmer	100	11D / E	12.0		45,346	3,556	5,000	39,838	93,740	3,909
02-7310	Nurse 3	FT	A	SS	Palmer	500	24C / D	12.0		109,990	0	5,000	70,486	185,476	7,734
02-7312	Assisted Living Aide	FT	A	GP	Palmer	100	9M / N	12.0		50,383	3,911	5,000	41,916	101,210	4,221
02-7313	Certified Nurse Aide 1	FT	A	GP	Palmer	100	11F / G	12.0		47,100	3,680	5,000	40,562	96,342	4,018
02-7314	Pio Hm Asst Adm	FT	A	SS	Anchorage	100	21B / C	12.0		85,052	0	0	58,137	143,189	8,878
02-7317	Certified Nurse Aide 1	FT	A	GG	Palmer	100	11S / T	12.0		68,120	5,164	5,000	49,233	127,517	5,318
02-7318	Licensed Practical Nurse	FT	A	GP	Palmer	200	17O / P	12.0		91,826	6,838	5,000	59,011	162,675	6,784
02-7319	Certified Nurse Aide 1	FT	A	GP	Palmer	100	11M / N	12.0		57,050	4,382	5,000	44,666	111,098	4,633
02-7320	Certified Nurse Aide 1	FT	A	GG	Palmer	100	11Q / R	12.0		63,304	4,824	5,000	47,246	120,374	5,020
02-7321	Assisted Living Aide	FT	A	GP	Palmer	100	9M / N	12.0		49,850	3,874	5,000	41,696	100,420	4,188
02-7322	Certified Nurse Aide 2	FT	A	GP	Palmer	100	12D / E	12.0		47,208	3,687	5,000	40,606	96,501	4,024
02-7323	Certified Nurse Aide 1	FT	A	GP	Palmer	100	11B / C	12.0		42,607	3,362	5,000	38,709	89,678	3,740
02-7325	Certified Nurse Aide 1	FT	A	GP	Palmer	100	11B / C	12.0		42,542	3,358	5,000	38,682	89,582	3,736
02-7326	Certified Nurse Aide 1	FT	A	GP	Palmer	100	11M / N	12.0		55,841	4,297	5,000	44,168	109,306	4,558
02-7327	Certified Nurse Aide 1	FT	A	GP	Palmer	100	11M	12.0		55,614	4,281	5,000	44,074	108,969	4,544
02-7328	Certified Nurse Aide 1	FT	A	GP	Palmer	100	11C / D	12.0		43,032	3,392	5,000	38,884	90,308	3,766
02-7329	Certified Nurse Aide 1	FT	A	GP	Palmer	100	11E / F	12.0		45,984	3,601	5,000	40,102	94,687	3,948
02-7330	Certified Nurse Aide 1	FT	A	GP	Palmer	100	11F / G	12.0		48,111	3,751	5,000	40,979	97,841	4,080
02-7332	Certified Nurse Aide 1	FT	A	GP	Palmer	100	11K	12.0		52,163	4,037	5,000	42,650	103,850	4,331
02-7333	Certified Nurse Aide 1	FT	A	GP	Palmer	100	11A / B	12.0		40,843	3,238	5,000	37,981	87,062	3,631
02-7334	Certified Nurse Aide 1	FT	A	GP	Palmer	100	11B / C	12.0		42,357	3,345	5,000	38,605	89,307	3,724
02-7335	Certified Nurse Aide 1	FT	A	GP	Palmer	100	11A / B	12.0		40,843	3,238	5,000	37,981	87,062	3,631
02-7336	Assisted Living Aide	PT	A	GP	Palmer	100	9B	9.0		27,597	1,949	0	18,535	48,081	2,005
02-7338	Recreation Therapist 2	FT	A	SS	Palmer	99	16M	12.0		75,296	0	0	54,112	129,408	5,396
02-7339	Certified Nurse Aide 1	FT	A	GP	Palmer	100	11K / L	12.0		53,223	4,112	5,000	43,088	105,423	4,396
02-7340	Assisted Living Aide	FT	A	GP	Palmer	100	9F / G	12.0		42,215	3,335	5,000	38,547	89,097	3,715
02-7341	Pro Svcs Sp 3	FT	A	GP	Palmer	100	19C / D	12.0		73,675	5,203	0	49,462	128,340	5,352
02-7342	Licensed Practical Nurse	FT	A	GP	Palmer	100	17E / F	12.0		69,134	5,236	5,000	49,651	129,021	5,380
02-7343	Maint Gen Fman	FT	A	LL	Palmer	1BB	52M / N	12.0		80,859	0	2,000	53,452	136,311	5,684
02-7346	Maint Gen Jmny	FT	A	LL	Palmer	1BB	54K / L	12.0		65,858	0	2,000	47,264	115,122	4,801
02-7350	Office Assistant 2	PT	A	GP	Palmer	100	10B	6.0		19,510	1,378	0	12,816	33,704	1,406
02-7351	Certified Nurse Aide 1	FT	A	GP	Palmer	100	11D / E	12.0		44,372	3,487	5,000	39,437	92,296	3,849
02-7352	Certified Nurse Aide 1	PT	A	GP	Palmer	100	11G	6.0		24,258	1,713	0	14,774	40,745	1,699
02-7356	Certified Nurse Aide 1	FT	A	GP	Palmer	100	11L	12.0		53,859	4,157	5,000	43,350	106,366	4,436
02-7357	Nurse 2	FT	A	GP	Anchorage	100	22E / F	12.0		97,263	7,010	2,000	60,017	166,290	10,310
02-7359	Certified Nurse Aide 1	FT	A	GP	Palmer	100	11K	12.0		52,163	4,037	5,000	42,650	103,850	4,331
02-7362	Nurse 3	FT	A	SS	Anchorage	100	24M	12.0		134,924	0	2,000	79,534	216,458	13,420

Note: If a position is split, an asterisk (*) will appear in the Split/Count column. If the split position is also counted in the component, two asterisks (**) will appear in this column. [No valid job title] appearing in the Job Class Title indicates that the PCN has an invalid class code or invalid range for the class code effective date of this scenario.

Personal Services Expenditure Detail
Department of Family and Community Services

Scenario: FY2025 Governor (20959)
Component: Pioneer Homes (3323)
RDU: Alaska Pioneer Homes (503)

PCN	Job Class Title	Time Status	Retire Code	Barg Unit	Location	Salary Sched	Range / Step	Comp Months	Split / Count	Annual Salaries	COLA	Premium Pay	Annual Benefits	Total Costs	UGF Amount
02-7369	Nurse 2	FT	A	GP	Palmer	100	22E / F	12.0		98,116	7,283	5,000	61,606	172,005	7,173
02-7375	Certified Nurse Aide 1	FT	A	GP	Palmer	100	11F / G	12.0		47,842	3,732	5,000	40,868	97,442	4,063
02-7383	Assisted Living Aide	FT	A	GP	Palmer	100	9B / C	12.0		37,294	2,634	0	34,454	74,382	3,102
02-7390	Nurse 2	FT	A	GP	Palmer	100	22K	12.0		110,702	8,171	5,000	66,798	190,671	7,951
02-7391	Certified Nurse Aide 1	FT	A	GP	Palmer	100	11O / P	12.0		60,989	4,660	5,000	46,291	116,940	4,876
02-7392	Certified Nurse Aide 1	PT	A	GP	Palmer	100	11L / M	9.0		40,906	2,889	0	24,025	67,820	2,828
02-7393	Certified Nurse Aide 1	FT	A	GP	Palmer	100	11A / B	12.0		40,843	3,238	5,000	37,981	87,062	3,631
02-7394	Nurse 3	FT	A	SS	Palmer	100	24D / E	12.0		112,748	0	5,000	71,624	189,372	7,897
02-7396	Supply Technician 2	FT	A	GP	Palmer	99	12P	12.0		60,977	4,307	0	44,224	109,508	4,567
02-7397	Licensed Practical Nurse	FT	A	GP	Palmer	100	17F / G	12.0		72,372	5,464	5,000	50,987	133,823	5,580
02-7398	Certified Nurse Aide 1	FT	A	GP	Palmer	100	11K	12.0		52,163	4,037	5,000	42,650	103,850	4,331
02-7399	Certified Nurse Aide 1	FT	A	GP	Palmer	100	11C / D	12.0		43,707	3,440	5,000	39,162	91,309	3,808
02-7403	Office Assistant 2	FT	A	GP	Anchorage	100	10B / C	12.0		40,023	2,827	0	35,580	78,430	4,863
02-7405	Certified Nurse Aide 1	FT	A	GP	Anchorage	100	11D / E	12.0		45,443	3,563	5,000	39,878	93,884	5,821
02-7408	Physical Therapist	FT	A	SS	Anchorage	99	18O / P	12.0		93,149	0	0	61,477	154,626	9,587
02-7411	Certified Nurse Aide 1	FT	A	GP	Anchorage	100	11K	12.0		52,163	4,037	5,000	42,650	103,850	6,439
02-7413	Licensed Practical Nurse	FT	A	GP	Anchorage	100	17D / E	12.0		66,683	5,063	5,000	48,640	125,386	7,774
02-7415	Licensed Practical Nurse	FT	A	GG	Anchorage	99	17O / P	12.0		83,094	6,222	5,000	55,409	149,725	9,283
02-7416	Licensed Practical Nurse	FT	A	GP	Anchorage	100	17E / F	12.0		70,858	5,357	5,000	50,362	131,577	8,158
02-7417	Nurse 3	FT	A	SS	Anchorage	100	24O	12.0		143,874	0	5,000	84,463	233,337	14,467
02-7418	Nurse 3	FT	A	SS	Anchorage	100	24D / E	12.0		114,858	0	0	70,432	185,290	11,488
02-7419	Certified Nurse Aide 1	FT	A	GP	Anchorage	100	11D / E	12.0		44,493	3,495	5,000	39,487	92,475	5,734
02-7420	Licensed Practical Nurse	FT	A	GP	Anchorage	100	17E / F	12.0		70,343	5,321	5,000	50,150	130,814	8,111
02-7421	Certified Nurse Aide 2	FT	A	GP	Anchorage	100	12C / D	12.0		46,128	3,611	5,000	40,161	94,900	5,884
02-7422	Assisted Living Aide	FT	A	GP	Anchorage	100	9B / C	12.0		37,509	3,002	5,000	36,606	82,117	5,091
02-7423	Certified Nurse Aide 1	FT	A	GP	Anchorage	100	11S / T	12.0		68,484	5,190	5,000	49,383	128,057	7,940
02-7424	Certified Nurse Aide 1	FT	A	GP	Anchorage	100	11E / F	12.0		45,936	3,686	6,250	40,597	96,469	5,981
02-7425	Certified Nurse Aide 2	FT	A	GP	Anchorage	100	12P	12.0		65,520	4,980	5,000	48,160	123,660	7,667
02-7427	Certified Nurse Aide 1	FT	A	GP	Anchorage	100	11J / K	12.0		50,866	3,946	5,000	42,115	101,927	6,320
02-7428	Certified Nurse Aide 1	FT	A	GP	Anchorage	100	11K / L	12.0		52,785	4,081	5,000	42,907	104,773	6,496
02-7429	Certified Nurse Aide 1	FT	A	GP	Anchorage	100	11M	12.0		55,614	4,281	5,000	44,074	108,969	6,756
02-7430	Administrative Assistant 3	FT	A	SS	Anchorage	100	15B / C	12.0		57,588	0	0	46,808	104,396	6,473
02-7431	Certified Nurse Aide 1	FT	A	GP	Anchorage	100	11K	12.0		52,163	4,072	5,500	42,857	104,592	6,485
02-7432	A/L Care Coord	FT	A	GP	Anchorage	100	17B / C	12.0		64,194	4,922	5,500	47,819	122,435	7,591
02-7433	Certified Nurse Aide 1	FT	A	GP	Anchorage	100	11F / G	12.0		47,491	3,742	5,500	40,929	97,662	6,055
02-7434	Certified Nurse Aide 1	FT	A	GP	Anchorage	100	11E / F	12.0		46,116	3,257	0	38,093	87,466	5,423
02-7435	Certified Nurse Aide 2	FT	A	GP	Anchorage	100	12U	12.0		76,869	5,817	5,500	53,048	141,234	8,757
02-7436	Certified Nurse Aide 1	FT	A	GP	Anchorage	100	11R	12.0		65,267	4,998	5,500	48,262	124,027	7,690

Note: If a position is split, an asterisk (*) will appear in the Split/Count column. If the split position is also counted in the component, two asterisks (**) will appear in this column. [No valid job title] appearing in the Job Class Title indicates that the PCN has an invalid class code or invalid range for the class code effective date of this scenario.

Personal Services Expenditure Detail
Department of Family and Community Services

Scenario: FY2025 Governor (20959)
Component: Pioneer Homes (3323)
RDU: Alaska Pioneer Homes (503)

PCN	Job Class Title	Time Status	Retire Code	Barg Unit	Location	Salary Sched	Range / Step	Comp Months	Split / Count	Annual Salaries	COLA	Premium Pay	Annual Benefits	Total Costs	UGF Amount
02-7437	Certified Nurse Aide 1	FT	A	GP	Anchorage	100	11K	12.0		52,163	4,072	5,500	42,857	104,592	6,485
02-7438	Certified Nurse Aide 1	FT	A	GP	Anchorage	200	11C	12.0		42,296	3,376	5,500	38,786	89,958	5,577
02-7439	Certified Nurse Aide 1	FT	A	GP	Anchorage	100	11B / C	12.0		42,705	3,016	0	36,686	82,407	5,109
02-7443	Certified Nurse Aide 1	FT	A	GP	Anchorage	100	11A / B	12.0		41,399	3,277	5,000	38,210	87,886	5,449
02-7445	Maint Gen Fman	FT	A	LL	Anchorage	1AA	52K / L	12.0		72,626	0	2,000	50,056	124,682	7,730
02-7446	Maint Gen Jrny	FT	A	LL	Anchorage	1AA	54K	12.0		62,825	0	2,000	46,013	110,838	6,872
02-7447	Maint Gen Jrny	FT	A	LL	Anchorage	1AA	54C / D	12.0		54,208	0	2,000	42,458	98,666	6,117
02-7452	Certified Nurse Aide 1	FT	A	GP	Anchorage	100	11A	12.0		40,287	3,198	5,000	37,752	86,237	5,347
02-7453	Maint Gen Jrny	FT	A	LL	Anchorage	1AA	54E / F	12.0		57,716	0	2,000	43,905	103,621	6,425
02-7455	Certified Nurse Aide 1	FT	A	GP	Anchorage	100	11D / E	12.0		45,322	3,554	5,000	39,828	93,704	5,810
02-7456	Certified Nurse Aide 1	FT	A	GP	Anchorage	100	11F / G	12.0		47,572	3,713	5,000	40,757	97,042	6,017
02-7462	Certified Nurse Aide 1	FT	A	GP	Anchorage	100	11Q	12.0		63,219	4,818	5,000	47,211	120,248	7,455
02-7463	Certified Nurse Aide 1	FT	A	GP	Anchorage	100	11K	12.0		52,163	4,037	5,000	42,650	103,850	6,439
02-7464	Certified Nurse Aide 1	FT	A	GP	Anchorage	100	11A / B	12.0		41,399	2,924	0	36,148	80,471	4,989
02-7467	Certified Nurse Aide 1	FT	A	GP	Anchorage	100	11B / C	12.0		42,705	3,016	0	36,686	82,407	5,109
02-7470	Certified Nurse Aide 1	FT	A	GP	Anchorage	100	11B / C	12.0		42,705	3,369	5,000	38,749	89,823	5,569
02-7474	Recreation Therapist 2	FT	A	SS	Anchorage	99	16S / T	12.0		99,010	0	0	63,894	162,904	10,100
02-7475	Recreation Assistant	FT	A	GP	Anchorage	99	11N	12.0		52,923	3,738	0	40,901	97,562	6,049
02-7476	Supply Technician 2	FT	A	GP	Anchorage	100	12A / B	12.0		43,957	3,104	0	37,203	84,264	5,224
02-7477	Assisted Living Aide	FT	A	GP	Anchorage	100	9A / B	12.0		36,797	2,952	5,000	36,312	81,061	5,026
02-7478	Certified Nurse Aide 1	FT	A	GP	Anchorage	100	11G / J	12.0		49,186	3,827	5,000	41,422	99,435	6,165
02-7480	Pharmacy Technician	FT	A	GP	Anchorage	100	12F / G	12.0		51,831	3,661	0	40,451	95,943	5,949
02-7484	Pharmacy Technician	PT	A	GP	Anchorage	100	12B / C	8.0		29,822	2,106	0	18,658	50,586	3,136
02-7486	Certified Nurse Aide 1	FT	A	GP	Anchorage	100	11A / B	12.0		41,399	3,277	5,000	38,210	87,886	5,449
02-7487	Certified Nurse Aide 1	FT	A	GP	Anchorage	100	11B / C	12.0		42,705	3,016	0	36,686	82,407	5,109
02-7488	Certified Nurse Aide 1	FT	A	GP	Anchorage	100	11F / G	12.0		47,842	3,732	5,000	40,868	97,442	6,041
02-7489	Nurse 2	FT	A	GP	Anchorage	100	22E / F	12.0		99,645	7,391	5,000	62,237	174,273	10,805
02-7496	Certified Nurse Aide 1	FT	A	GP	Anchorage	100	11G / J	12.0		50,190	3,545	0	39,774	93,509	5,798
02-7499	Certified Nurse Aide 1	FT	A	GP	Anchorage	100	11N / O	12.0		57,818	4,437	5,000	44,983	112,238	6,959
02-7529	Assisted Living Aide	FT	A	GP	Anchorage	100	9A / B	12.0		36,797	3,040	6,250	36,828	82,915	5,141
02-7540	Pioneers Home Administrator	FT	A	XE	Anchorage	N00	23B / C	12.0		91,844	0	0	60,794	152,638	9,464
02-7541	Nurse 1	FT	A	GP	Anchorage	100	21B / C	12.0		83,041	6,306	6,250	55,903	151,500	9,393
02-7542	Certified Nurse Aide 1	FT	A	GP	Anchorage	100	11A / B	12.0		41,399	3,365	6,250	38,726	89,740	5,564
02-7543	Licensed Practical Nurse	FT	A	GP	Anchorage	99	17O	12.0		85,448	6,476	6,250	56,896	155,070	9,614
02-7545	Assisted Living Aide	FT	A	GP	Anchorage	100	9A / B	12.0		36,797	3,040	6,250	36,828	82,915	5,141
02-7546	Licensed Practical Nurse	FT	A	GP	Anchorage	99	17P	12.0		86,288	6,535	6,250	57,243	156,316	9,692
02-7547	Licensed Practical Nurse	FT	A	GP	Anchorage	100	17L / M	12.0		81,770	6,216	6,250	55,379	149,615	9,276
02-7548	Certified Nurse Aide 1	FT	A	GP	Anchorage	100	11L / M	12.0		54,005	4,256	6,250	43,926	108,437	6,723

Note: If a position is split, an asterisk (*) will appear in the Split/Count column. If the split position is also counted in the component, two asterisks (**) will appear in this column. [No valid job title] appearing in the Job Class Title indicates that the PCN has an invalid class code or invalid range for the class code effective date of this scenario.

Personal Services Expenditure Detail
Department of Family and Community Services

Scenario: FY2025 Governor (20959)
Component: Pioneer Homes (3323)
RDU: Alaska Pioneer Homes (503)

PCN	Job Class Title	Time Status	Retire Code	Barg Unit	Location	Salary Sched	Range / Step	Comp Months	Split / Count	Annual Salaries	COLA	Premium Pay	Annual Benefits	Total Costs	UGF Amount
02-7549	Certified Nurse Aide 1	FT	A	GP	Anchorage	100	11M	12.0		55,614	4,369	6,250	44,590	110,823	6,871
02-7550	Certified Nurse Aide 1	FT	A	GP	Anchorage	100	11C / D	12.0		43,772	3,533	6,250	39,705	93,260	5,782
02-7551	Certified Nurse Aide 1	FT	A	GP	Anchorage	100	11O / P	12.0		60,506	4,715	6,250	46,607	118,078	7,321
02-7552	Certified Nurse Aide 1	FT	A	GP	Anchorage	100	11D / E	12.0		44,312	3,571	6,250	39,927	94,060	5,832
02-7553	Certified Nurse Aide 1	FT	A	GP	Anchorage	100	11F / G	12.0		47,774	3,815	6,250	41,356	99,195	6,150
02-7554	Certified Nurse Aide 2	FT	A	GP	Anchorage	100	12A / S	12.0		72,111	5,534	6,250	51,395	135,290	8,388
02-7555	Certified Nurse Aide 1	FT	A	GP	Anchorage	100	11J / K	12.0		50,934	4,039	6,250	42,659	103,882	6,441
02-7556	Certified Nurse Aide 1	FT	A	GP	Anchorage	100	11M / N	12.0		57,201	4,481	6,250	45,244	113,176	7,017
02-7557	Certified Nurse Aide 1	FT	A	GP	Anchorage	100	11A / B	12.0		41,399	3,365	6,250	38,726	89,740	5,564
02-7559	Assisted Living Aide	FT	A	GP	Anchorage	100	9B / C	12.0		0	0	0	0	0	0
02-7560	Assisted Living Aide	FT	A	GP	Anchorage	100	9B / C	12.0		37,335	3,078	6,250	37,049	83,712	5,190
02-7562	Maint Gen Jrny	FT	A	LL	Anchorage	1AA	54J / K	12.0		61,030	0	2,000	45,272	108,302	6,715
02-7573	Certified Nurse Aide 1	FT	A	GP	Anchorage	100	11G	12.0		48,516	3,426	0	39,083	91,025	5,644
02-7574	Accounting Technician 3	FT	A	GP	Anchorage	100	16O / P	12.0		84,442	5,964	0	53,903	144,309	8,947
02-7576	Licensed Practical Nurse	FT	A	GP	Anchorage	100	17D / E	12.0		68,757	5,297	6,250	50,011	130,315	8,080
02-7577	Nurse 2	FT	A	GP	Anchorage	100	22C / C	12.0		89,798	6,783	6,250	58,690	161,521	10,014
02-7579	Assisted Living Aide	FT	A	GP	Anchorage	100	9A / B	12.0		36,797	3,040	6,250	36,828	82,915	5,141
02-7580	Nurse 2	FT	A	GP	Anchorage	100	22K / L	12.0		110,852	8,270	6,250	67,375	192,747	11,950
02-7581	Licensed Practical Nurse	FT	A	GP	Anchorage	100	17E / F	12.0		69,947	5,381	6,250	50,502	132,080	8,189
02-7582	Certified Nurse Aide 1	FT	A	GP	Anchorage	100	11E / F	12.0		46,176	3,703	6,250	40,696	96,825	6,003
02-7583	Assisted Living Aide	FT	A	GP	Anchorage	100	9B / C	12.0		37,509	3,090	6,250	37,121	83,970	5,206
02-7584	Certified Nurse Aide 1	FT	A	GP	Anchorage	100	11D / E	12.0		44,913	3,613	6,250	40,175	94,951	5,887
02-7585	Certified Nurse Aide 1	FT	A	GP	Anchorage	100	11C / D	12.0		43,826	3,537	6,250	39,727	93,340	5,787
02-7586	Certified Nurse Aide 2	FT	A	GP	Anchorage	100	12Q / R	12.0		68,564	5,284	6,250	49,931	130,029	8,062
02-7587	Certified Nurse Aide 1	FT	A	GP	Anchorage	100	11E / F	12.0		46,657	3,737	6,250	40,895	97,539	6,047
02-7588	Certified Nurse Aide 1	FT	A	GP	Anchorage	100	11A / B	12.0		41,399	3,365	6,250	38,726	89,740	5,564
02-7589	Certified Nurse Aide 1	FT	A	GP	Anchorage	100	11F / G	12.0		47,235	3,777	6,250	41,133	98,395	6,101
02-7590	Certified Nurse Aide 1	FT	A	GP	Anchorage	100	11B / C	12.0		42,705	3,457	6,250	39,265	91,677	5,684
02-7591	Certified Nurse Aide 1	FT	A	GP	Anchorage	100	11A / B	12.0		41,399	3,365	6,250	38,726	89,740	5,564
02-7592	Certified Nurse Aide 1	FT	A	GP	Anchorage	100	11N	12.0		57,428	4,497	6,250	45,338	113,513	7,038
02-7593	Certified Nurse Aide 1	FT	A	GP	Anchorage	100	11B / C	12.0		42,705	3,016	0	36,686	82,407	5,109
02-7594	Certified Nurse Aide 1	FT	A	GG	Anchorage	100	11B / C	12.0		42,705	3,457	6,250	39,265	91,677	5,684
02-7597	Med I/S Asst	FT	A	GP	Anchorage	100	10A / B	12.0		38,405	2,712	0	34,913	76,030	4,714
02-7600	Pioneers Home Administrator	FT	A	XE	Ketchikan	N00	23D / E	12.0		98,412	0	0	63,504	161,916	10,039
02-7601	Certified Nurse Aide 1	FT	A	GP	Ketchikan	100	11O	12.0		59,300	4,541	5,000	45,594	114,435	7,095
02-7602	Administrative Assistant 1	FT	A	GP	Ketchikan	100	12A / B	12.0		44,012	3,108	0	37,226	84,346	5,230
02-7603	Certified Nurse Aide 1	FT	A	GP	Ketchikan	100	11F / G	12.0		47,707	3,722	5,000	40,812	97,241	6,029
02-7605	Nurse 2	FT	A	GP	Ketchikan	100	22D / E	12.0		94,088	6,998	5,000	59,944	166,030	10,294

Note: If a position is split, an asterisk (*) will appear in the Split/Count column. If the split position is also counted in the component, two asterisks (**) will appear in this column. [No valid job title] appearing in the Job Class Title indicates that the PCN has an invalid class code or invalid range for the class code effective date of this scenario.

Personal Services Expenditure Detail
Department of Family and Community Services

Scenario: FY2025 Governor (20959)
Component: Pioneer Homes (3323)
RDU: Alaska Pioneer Homes (503)

PCN	Job Class Title	Time Status	Retire Code	Barg Unit	Location	Salary Sched	Range / Step	Comp Months	Split / Count	Annual Salaries	COLA	Premium Pay	Annual Benefits	Total Costs	UGF Amount
02-7606	Certified Nurse Aide 1	FT	A	GP	Ketchikan	100	11E / F	12.0		45,984	3,601	5,000	40,102	94,687	5,871
02-7607	Licensed Practical Nurse	FT	A	GP	Ketchikan	100	17B / C	12.0		62,082	4,738	5,000	46,742	118,562	7,351
02-7608	Certified Nurse Aide 1	FT	A	GP	Ketchikan	100	11A / B	12.0		41,399	3,365	6,250	38,726	89,740	5,564
02-7609	Certified Nurse Aide 1	FT	A	GP	Ketchikan	100	11A / B	12.0		40,843	3,326	6,250	38,497	88,916	5,513
02-7610	Nurse 3	FT	A	GP	Ketchikan	100	24D / E	12.0		110,327	8,233	6,250	67,159	191,969	11,902
02-7611	Pio Hm Asst Adm	FT	A	SS	Ketchikan	100	21D / E	12.0		91,023	0	0	60,600	151,623	9,401
02-7612	Certified Nurse Aide 1	FT	A	GP	Ketchikan	100	11B / D	12.0		44,012	3,550	6,250	39,804	93,616	5,804
02-7613	Certified Nurse Aide 2	FT	A	GP	Ketchikan	100	12N / O	12.0		63,204	4,905	6,250	47,720	122,079	7,569
02-7614	Certified Nurse Aide 1	FT	A	GP	Anchorage	100	11B / C	12.0		42,705	3,457	6,250	39,265	91,677	5,684
02-7615	Assisted Living Aide	FT	A	GP	Ketchikan	100	9C / D	12.0		38,549	3,164	6,250	37,550	85,513	5,302
02-7616	Certified Nurse Aide 1	FT	A	GP	Ketchikan	100	11F / G	12.0		47,909	3,825	6,250	41,411	99,395	6,163
02-7617	Assisted Living Aide	FT	A	GP	Ketchikan	100	9C / D	12.0		38,139	3,135	6,250	37,381	84,905	5,264
02-7618	Certified Nurse Aide 1	FT	A	GP	Ketchikan	100	11F / G	12.0		48,179	3,844	6,250	41,523	99,796	6,187
02-7619	Assisted Living Aide	FT	A	GP	Ketchikan	100	9C / D	12.0		38,323	3,148	6,250	37,457	85,178	5,281
02-7620	Assisted Living Aide	FT	A	GP	Ketchikan	100	9A / B	12.0		36,797	3,040	6,250	36,828	82,915	5,141
02-7621	Certified Nurse Aide 2	FT	A	GP	Ketchikan	100	12O	12.0		63,453	4,923	6,250	47,823	122,449	7,592
02-7623	Pro Svcs Sp 3	FT	A	SS	Ketchikan	500	19B / C	12.0		75,326	0	0	54,125	129,451	8,026
02-7624	Certified Nurse Aide 1	FT	A	GP	Ketchikan	100	11A / B	12.0		40,843	3,326	6,250	38,497	88,916	5,513
02-7630	Certified Nurse Aide 2	FT	A	GP	Ketchikan	100	12A / B	12.0		44,012	3,550	6,250	39,804	93,616	5,804
02-7631	Pro Svcs Sp 1	FT	A	GP	Ketchikan	100	15C / D	12.0		57,078	4,031	0	42,615	103,724	6,431
02-7632	Certified Nurse Aide 1	FT	A	GG	Anchorage	100	11Q / R	12.0		64,669	5,009	6,250	48,325	124,253	7,704
02-7633	Assisted Living Aide	FT	A	GP	Ketchikan	100	9C / D	12.0		38,784	3,181	6,250	37,647	85,862	5,323
02-7634	Certified Nurse Aide 2	FT	A	GP	Ketchikan	100	12B / C	12.0		45,455	3,652	6,250	40,399	95,756	5,937
02-7635	Maint Gen Fman	FT	A	LL	Ketchikan	1AA	52J	12.0		69,043	0	2,000	48,578	119,621	7,417
02-7638	Maint Gen Jrny	FT	A	LL	Ketchikan	1AA	54B / C	12.0		52,173	0	2,000	41,619	95,792	5,939
02-7648	Assisted Living Aide	FT	A	GP	Ketchikan	100	9B / C	12.0		37,501	3,090	6,250	37,118	83,959	5,206
02-7669	Certified Nurse Aide 2	FT	A	GP	Ketchikan	100	12B / C	12.0		45,455	3,652	6,250	40,399	95,756	5,937
02-7670	Administrative Assistant 3	FT	A	SS	Ketchikan	100	15K	12.0		69,014	0	0	51,521	120,535	7,473
02-7671	Certified Nurse Aide 1	FT	A	GP	Ketchikan	100	11B / C	12.0		42,705	3,457	6,250	39,265	91,677	5,684
02-7800	Pioneers Home Administrator	FT	A	XE	Juneau	N05	23E / F	12.0		106,302	0	0	66,758	173,060	10,730
02-7801	Assisted Living Aide	FT	A	GP	Juneau	105	9B / C	12.0		39,683	3,244	6,250	38,018	87,195	5,406
02-7802	Assisted Living Aide	FT	A	GP	Juneau	105	9C / D	12.0		40,112	3,274	6,250	38,195	87,831	5,446
02-7803	Certified Nurse Aide 1	FT	A	GP	Juneau	105	11A / B	12.0		43,466	3,511	6,250	39,578	92,805	5,754
02-7804	Maint Gen Fman	FT	A	LL	Juneau	1AA	52O	12.0		82,997	0	2,000	54,334	139,331	8,639
02-7805	Pro Svcs Sp 3	FT	A	GP	Juneau	105	19B / C	12.0		75,864	5,358	0	50,365	131,587	8,158
02-7806	Administrative Assistant 3	FT	A	SS	Juneau	105	15L / M	12.0		76,643	0	0	54,668	131,311	8,141
02-7810	Maint Gen Jrny	FT	A	LL	Juneau	1AA	54N / O	12.0		70,496	0	2,000	49,177	121,673	7,544
02-7812	Recreation Therapist 2	FT	A	SS	Juneau	105	16J	12.0		75,296	0	0	54,112	129,408	8,023

Note: If a position is split, an asterisk (*) will appear in the Split/Count column. If the split position is also counted in the component, two asterisks (**) will appear in this column. [No valid job title] appearing in the Job Class Title indicates that the PCN has an invalid class code or invalid range for the class code effective date of this scenario.

Personal Services Expenditure Detail
Department of Family and Community Services

Scenario: FY2025 Governor (20959)
Component: Pioneer Homes (3323)
RDU: Alaska Pioneer Homes (503)

PCN	Job Class Title	Time Status	Retire Code	Barg Unit	Location	Salary Sched	Range / Step	Comp Months	Split / Count	Annual Salaries	COLA	Premium Pay	Annual Benefits	Total Costs	UGF Amount
02-7813	Assisted Living Aide	FT	A	GP	Juneau	105	9D / E	12.0		42,185	3,421	6,250	39,050	90,906	5,636
02-7814	Certified Nurse Aide 1	FT	A	GP	Juneau	105	11G / J	12.0		51,713	4,094	6,250	42,980	105,037	6,512
02-7815	Assisted Living Aide	FT	A	GP	Juneau	105	9C / D	12.0		39,801	3,252	6,250	38,067	87,370	5,417
02-7816	Nurse 3	FT	A	SS	Juneau	105	24K	12.0		132,912	0	6,250	80,457	219,619	13,177
02-7817	Licensed Practical Nurse	FT	A	GP	Juneau	105	17C / D	12.0		69,849	5,374	6,250	50,461	131,934	8,180
02-7818	Nurse 3	FT	A	SS	Juneau	105	24C / D	12.0		116,688	0	6,250	73,765	196,703	12,196
02-7819	A/L Care Coord	FT	A	SS	Juneau	105	17B / C	12.0		69,427	0	0	51,691	121,118	7,509
02-7820	Licensed Practical Nurse	FT	A	GP	Juneau	105	17L / M	12.0		87,367	6,612	6,250	57,688	157,917	9,791
02-7821	Assisted Living Aide	FT	A	GP	Juneau	105	9C / D	12.0		40,251	3,284	6,250	38,252	88,037	5,458
02-7822	Assisted Living Aide	FT	A	GP	Juneau	105	9E / F	12.0		43,076	3,484	6,250	39,418	92,228	5,718
02-7823	Licensed Practical Nurse	PT	A	GP	Juneau	105	17E / F	9.0		54,350	3,838	0	29,571	87,759	5,441
02-7824	Nurse 2	FT	N	GP	Palmer	100	22D / E	12.0		93,124	5,689	6,250	33,470	138,533	5,777
02-7825	Certified Nurse Aide 1	FT	A	GP	Juneau	105	11E / F	12.0		48,237	3,848	6,250	41,547	99,882	6,193
02-7826	Certified Nurse Aide 1	FT	A	GP	Juneau	105	11N	12.0		60,294	4,700	6,250	46,520	117,764	7,301
02-7827	Assisted Living Aide	FT	A	GP	Juneau	105	9C / D	12.0		40,197	2,839	0	35,652	78,688	4,879
02-7828	Certified Nurse Aide 1	FT	A	GP	Juneau	105	11C / D	12.0		46,124	3,699	6,250	40,675	96,748	5,998
02-7829	Certified Nurse Aide 1	FT	A	GP	Juneau	105	11M / N	12.0		58,639	4,495	5,000	45,322	113,456	7,034
02-7830	Assisted Living Aide	FT	A	GP	Juneau	105	9B / C	12.0		39,279	3,127	5,000	37,336	84,742	5,254
02-7831	Certified Nurse Aide 2	FT	A	GP	Juneau	105	12A / B	12.0		46,215	3,617	5,000	40,197	95,029	5,892
02-7832	Certified Nurse Aide 1	FT	A	GP	Juneau	105	11F / G	12.0		49,520	3,850	5,000	41,560	99,930	6,196
02-7833	Certified Nurse Aide 1	FT	A	GP	Juneau	105	11L / M	12.0		56,782	4,452	6,250	45,071	112,555	6,978
02-7834	Certified Nurse Aide 1	FT	A	GP	Juneau	105	11A / B	12.0		42,881	3,028	0	36,759	82,668	5,125
02-7835	Assisted Living Aide	FT	A	GP	Anchorage	200	9C	12.0		37,538	3,100	6,350	37,174	84,162	5,218
02-7836	Certified Nurse Aide 1	FT	A	GP	Juneau	105	11A / B	12.0		43,466	3,511	6,250	39,578	92,805	5,754
02-7838	Administrative Assistant 1	FT	A	GP	Juneau	105	12K / L	12.0		59,433	4,197	0	43,587	107,217	6,648
02-7839	Pio Hm Asst Adm	FT	A	SS	Juneau	105	21D / E	12.0		97,632	0	0	63,326	160,958	9,979
02-7840	Certified Nurse Aide 1	FT	A	GP	Anchorage	100	11G / J	12.0		49,688	3,509	0	39,567	92,764	5,751
02-7841	Certified Nurse Aide 1	FT	A	GP	Juneau	105	11C / D	12.0		45,180	3,632	6,250	40,286	95,348	5,912
02-7842	Certified Nurse Aide 1	FT	A	GP	Juneau	105	11A / B	12.0		43,466	3,511	6,250	39,578	92,805	5,754
02-7843	Certified Nurse Aide 1	FT	A	GP	Juneau	105	11Q / R	12.0		67,361	5,199	6,250	49,435	128,245	7,951
02-7901	Certified Nurse Aide 1	FT	A	GP	Sitka	105	11G / J	12.0		51,997	4,114	6,250	43,098	105,459	6,539
02-7903	Certified Nurse Aide 1	FT	A	GP	Sitka	105	11O / P	12.0		62,517	4,857	6,250	47,437	121,061	7,506
02-7904	Certified Nurse Aide 1	FT	A	GP	Juneau	105	11N / O	12.0		60,540	4,717	6,250	46,622	118,129	7,324
02-7905	Certified Nurse Aide 1	FT	A	GP	Sitka	105	11J / K	12.0		53,632	4,229	6,250	43,772	107,883	6,689
02-7907	Certified Nurse Aide 1	FT	A	GP	Palmer	100	11C / D	12.0		43,707	3,528	6,250	39,678	93,163	3,885
02-7908	Certified Nurse Aide 1	FT	A	GP	Palmer	100	11J / K	12.0		51,207	4,058	6,250	42,772	104,287	4,349
02-7909	Med I/S Asst	FT	A	GP	Palmer	99	10P	12.0		54,864	3,875	0	41,702	100,441	4,188
02-7912	Assisted Living Aide	FT	A	GP	Sitka	105	9C / D	12.0		40,305	3,288	6,250	38,275	88,118	5,463

Note: If a position is split, an asterisk (*) will appear in the Split/Count column. If the split position is also counted in the component, two asterisks (**) will appear in this column. [No valid job title] appearing in the Job Class Title indicates that the PCN has an invalid class code or invalid range for the class code effective date of this scenario.

Personal Services Expenditure Detail
Department of Family and Community Services

Scenario: FY2025 Governor (20959)
Component: Pioneer Homes (3323)
RDU: Alaska Pioneer Homes (503)

PCN	Job Class Title	Time Status	Retire Code	Barg Unit	Location	Salary Sched	Range / Step	Comp Months	Split / Count	Annual Salaries	COLA	Premium Pay	Annual Benefits	Total Costs	UGF Amount
02-7913	Certified Nurse Aide 1	FT	A	GP	Sitka	105	11M	12.0		58,403	4,566	6,250	45,740	114,959	7,128
02-7917	Pharmacy Technician	FT	A	GP	Anchorage	99	12O	12.0		60,683	4,286	0	44,102	109,071	6,762
02-7918	Certified Nurse Aide 1	FT	A	GP	Palmer	100	11M / N	12.0		55,992	4,396	6,250	44,745	111,383	4,645
02-7919	Certified Nurse Aide 1	FT	A	GP	Anchorage	100	11R	12.0		65,267	5,051	6,250	48,571	125,139	7,759
02-7921	Licensed Practical Nurse	FT	A	GP	Anchorage	100	17C / D	12.0		66,515	5,139	6,250	49,086	126,990	7,873
02-7922	Licensed Practical Nurse	FT	A	GP	Anchorage	100	17C / D	12.0		65,992	5,102	6,250	48,870	126,214	7,825
02-7923	Licensed Practical Nurse	FT	A	GP	Anchorage	100	17A / B	12.0		60,821	4,737	6,250	46,737	118,545	7,350
02-7924	Certified Nurse Aide 1	FT	A	GP	Anchorage	100	11M	12.0		55,614	4,369	6,250	44,590	110,823	6,871
02-7925	Certified Nurse Aide 1	FT	A	GP	Anchorage	100	11G / J	12.0		49,855	3,962	6,250	42,214	102,281	6,341
02-7926	Nurse 1	FT	A	GP	Ketchikan	100	21B / C	12.0		82,840	6,292	6,250	55,820	151,202	9,375
02-7928	Pro Svcs Sp 2	FT	A	GP	Anchorage	100	17A / B	12.0		60,821	4,295	0	44,159	109,275	6,775
02-7930	Nurse 3	FT	A	SS	Anchorage	100	24D / E	12.0		112,996	0	6,250	72,242	191,488	11,872
02-7931	Certified Nurse Aide 1	FT	A	GP	Fairbanks	103	11B / C	12.0		43,992	3,548	6,250	39,795	93,585	5,802
02-7932	Certified Nurse Aide 1	FT	A	GP	Fairbanks	103	11O	12.0		61,074	4,755	6,250	46,842	118,921	7,373
02-7933	Certified Nurse Aide 1	FT	A	GP	Fairbanks	103	11A / B	12.0		42,647	3,453	6,250	39,241	91,591	5,679
02-7934	Assisted Living Aide	FT	A	GP	Sitka	105	9C / D	12.0		40,970	3,335	6,250	38,549	89,104	5,524
02-7935	Certified Nurse Aide 1	FT	A	GP	Fairbanks	103	11Q / R	12.0		65,549	5,071	6,250	48,688	125,558	7,785
02-7936	Certified Nurse Aide 1	FT	A	GP	Fairbanks	103	11A / B	12.0		42,647	3,453	6,250	39,241	91,591	5,679
02-7937	Assisted Living Aide	FT	A	GP	Fairbanks	103	9C / D	12.0		39,735	3,248	6,250	38,039	87,272	5,411
02-7941	Assisted Living Aide	FT	A	GP	Fairbanks	103	9B / C	12.0		38,669	3,172	6,250	37,600	85,691	5,313
02-7943	Assisted Living Aide	FT	A	GP	Ketchikan	100	9C / D	12.0		38,180	3,138	6,250	37,398	84,966	5,268
02-7944	Assisted Living Aide	FT	A	GP	Ketchikan	100	9E / F	12.0		41,167	3,349	6,250	38,630	89,396	5,543
02-7945	Certified Nurse Aide 1	FT	A	GP	Ketchikan	100	11B / C	12.0		42,705	3,457	6,250	39,265	91,677	5,684
02-7946	Pio Hm Asst Adm	FT	A	SS	Fairbanks	103	21D / E	12.0		95,535	0	0	62,461	157,996	9,796
02-7949	Certified Nurse Aide 1	FT	A	GP	Sitka	105	11D / E	12.0		46,253	3,708	6,250	40,728	96,939	6,010
02-7950	Certified Nurse Aide 1	FT	A	GP	Sitka	105	11Q / R	12.0		66,646	5,148	6,250	49,140	127,184	7,885
02-7951	Assisted Living Aide	FT	A	GP	Sitka	105	9A / B	12.0		38,025	3,127	6,250	37,334	84,736	5,254
02-7953	Certified Nurse Aide 1	FT	A	GP	Anchorage	100	11P	12.0		61,230	4,766	6,250	46,906	119,152	7,387
02-7955	Licensed Practical Nurse	FT	A	GP	Anchorage	100	17G / J	12.0		75,086	5,744	6,250	52,622	139,702	8,662
02-7956	Certified Nurse Aide 1	FT	A	GP	Anchorage	100	11J	12.0		50,525	4,010	6,250	42,490	103,275	6,403
02-7958	Nurse 2	FT	A	GP	Palmer	100	22C / D	12.0		92,773	6,994	6,250	59,918	165,935	6,920
06-6040	Certified Nurse Aide 1	FT	A	GP	Fairbanks	103	11G / J	12.0		51,873	4,105	6,250	43,046	105,274	6,527
06-6079	Certified Nurse Aide 1	FT	A	GP	Anchorage	100	11L	12.0		53,859	4,245	6,250	43,866	108,220	6,710
06-6120	Certified Nurse Aide 1	FT	A	GP	Anchorage	100	11B / C	12.0		42,705	3,457	6,250	39,265	91,677	5,684
06-6129	Certified Nurse Aide 1	FT	A	GP	Anchorage	100	11F / G	12.0		47,235	3,777	6,250	41,133	98,395	6,101
06-6147	Certified Nurse Aide 1	FT	A	GP	Fairbanks	103	11A / B	12.0		42,647	3,453	6,250	39,241	91,591	5,679
06-6161	Certified Nurse Aide 1	FT	A	GP	Anchorage	100	11M	12.0		55,614	4,369	6,250	44,590	110,823	6,871
06-6188	Nurse 1	FT	A	GP	Juneau	105	21C / D	12.0		88,285	6,235	0	55,488	150,008	9,301

Note: If a position is split, an asterisk (*) will appear in the Split/Count column. If the split position is also counted in the component, two asterisks (**) will appear in this column. [No valid job title] appearing in the Job Class Title indicates that the PCN has an invalid class code or invalid range for the class code effective date of this scenario.

Personal Services Expenditure Detail
Department of Family and Community Services

Scenario: FY2025 Governor (20959)
Component: Pioneer Homes (3323)
RDU: Alaska Pioneer Homes (503)

PCN	Job Class Title	Time Status	Retire Code	Barg Unit	Location	Salary Sched	Range / Step	Comp Months	Split / Count	Annual Salaries	COLA	Premium Pay	Annual Benefits	Total Costs	UGF Amount
06-6189	Certified Nurse Aide 1	FT	A	GP	Juneau	105	11P	12.0		64,292	4,982	6,250	48,169	123,693	7,669
06-6190	Assisted Living Aide	FT	A	GP	Juneau	105	9C / D	12.0		40,734	3,318	6,250	38,452	88,754	5,503
06-6192	Certified Nurse Aide 2	FT	A	GP	Fairbanks	103	12D / E	12.0		49,979	3,971	6,250	42,265	102,465	6,353
06-6194	Nurse 2	PT	A	GP	Anchorage	100	22B	9.0		65,301	4,612	0	34,088	104,001	6,448
06-6195	Certified Nurse Aide 1	FT	A	GP	Fairbanks	103	11B / C	12.0		42,927	3,473	6,250	39,356	92,006	5,704
06-6196	Certified Nurse Aide 2	FT	A	GP	Fairbanks	103	12L	12.0		59,397	4,636	6,250	46,150	116,433	7,219
06-6199	Certified Nurse Aide 1	FT	A	GP	Fairbanks	103	11B / C	12.0		43,095	3,485	6,250	39,425	92,255	5,720
06-6200	Certified Nurse Aide 1	FT	A	GP	Anchorage	100	11F / G	12.0		47,639	3,806	6,250	41,300	98,995	6,138
06-6201	Certified Nurse Aide 1	FT	A	GP	Anchorage	100	11A / B	12.0		40,843	3,326	6,250	38,497	88,916	5,513
06-6203	A/L Care Coord	FT	A	SS	Anchorage	100	17E / F	12.0		72,030	0	6,250	55,343	133,623	8,285
06-6204	Nurse 2	FT	A	GP	Anchorage	100	22F / G	12.0		100,194	7,518	6,250	62,979	176,941	10,970
06-6205	Nurse 2	FT	A	GP	Anchorage	100	22M / N	12.0		119,154	8,857	6,250	70,800	205,061	12,714
06-6206	Certified Nurse Aide 1	FT	A	GP	Ketchikan	100	11J / K	12.0		50,729	4,024	6,250	42,574	103,577	6,422
06-6207	Certified Nurse Aide 1	FT	A	GP	Anchorage	100	11O	12.0		59,300	4,629	6,250	46,110	116,289	7,210
06-6208	Pharmacy Technician	FT	A	GP	Anchorage	100	12J / K	12.0		54,605	3,856	0	41,595	100,056	6,204
06-6209	Pro Svcs Sp 3	FT	A	GP	Anchorage	100	19E / F	12.0		80,469	5,683	0	52,264	138,416	8,582
06-6210	Certified Nurse Aide 1	FT	A	GP	Sitka	105	11N / O	12.0		60,540	4,717	6,250	46,622	118,129	7,324
06-6211	Nurse 2	FT	A	GP	Palmer	100	22D / E	12.0		95,634	7,196	6,250	61,098	170,178	7,096
06-6212	Nurse 2	FT	A	GP	Palmer	100	22K / L	12.0		112,806	8,408	6,250	68,181	195,645	8,158
06-6213	Assisted Living Aide	FT	A	GP	Palmer	100	9A / B	12.0		36,797	3,040	6,250	36,828	82,915	3,458
06-6214	Certified Nurse Aide 1	FT	A	GP	Palmer	100	11N	12.0		57,428	4,497	6,250	45,338	113,513	4,734
06-6217	Assisted Living Aide	FT	A	GP	Sitka	105	9B / C	12.0		39,683	2,803	0	35,440	77,926	4,831
06-6220	Maint Gen Jrny	FT	A	LL	Palmer	1BB	54K	12.0		63,802	0	2,000	46,416	112,218	4,680
06-6222	Licensed Practical Nurse	FT	A	GP	Anchorage	100	17D / E	12.0		66,701	5,152	6,250	49,163	127,266	7,891
06-6223	Certified Nurse Aide 1	FT	A	GP	Juneau	105	11N	12.0		60,294	4,700	6,250	46,520	117,764	7,301
06-6224	Assisted Living Aide	FT	A	GP	Anchorage	100	9A / B	12.0		36,797	3,040	6,250	36,828	82,915	5,141
06-6225	Certified Nurse Aide 1	FT	A	GP	Juneau	105	11O	12.0		62,264	4,839	6,250	47,333	120,686	7,483
06-6226	Nurse 2	FT	A	GP	Sitka	105	22F / G	12.0		105,644	7,903	6,250	65,227	185,024	11,472
06-6228	Certified Nurse Aide 1	FT	A	GP	Sitka	105	11M / N	12.0		58,639	4,583	6,250	45,837	115,309	7,149
06-6230	Pio Hm Asst Adm	FT	A	SS	Sitka	105	21C / D	12.0		91,952	0	0	60,983	152,935	9,482
06-6231	Maint Gen Jrny	FT	A	LL	Anchorage	1AA	54F / J	12.0		58,647	0	2,000	44,289	104,936	6,506
06-6232	Licensed Practical Nurse	FT	A	GP	Juneau	105	17J / K	12.0		81,083	6,168	6,250	55,096	148,597	9,213
06-6235	Certified Nurse Aide 1	FT	A	GP	Palmer	100	11O / P	12.0		60,667	4,726	6,250	46,674	118,317	4,934
06-6236	Certified Nurse Aide 1	FT	A	GP	Palmer	100	11O	12.0		59,300	4,629	6,250	46,110	116,289	4,849
06-6237	Certified Nurse Aide 1	FT	A	GP	Palmer	100	11D / E	12.0		45,010	3,620	6,250	40,215	95,095	3,966
06-6238	Certified Nurse Aide 1	FT	A	GP	Ketchikan	100	11N	12.0		57,428	4,497	6,250	45,338	113,513	7,038
06-6239	A/L Care Coord	FT	A	SS	Ketchikan	100	17E / F	12.0		72,862	0	6,250	55,686	134,798	8,358
06-6240	Nurse 2	FT	A	GP	Ketchikan	100	22B / C	12.0		87,363	6,611	6,250	57,686	157,910	9,475

Note: If a position is split, an asterisk (*) will appear in the Split/Count column. If the split position is also counted in the component, two asterisks (**) will appear in this column. [No valid job title] appearing in the Job Class Title indicates that the PCN has an invalid class code or invalid range for the class code effective date of this scenario.

Personal Services Expenditure Detail
Department of Family and Community Services

Scenario: FY2025 Governor (20959)
Component: Pioneer Homes (3323)
RDU: Alaska Pioneer Homes (503)

PCN	Job Class Title	Time Status	Retire Code	Barg Unit	Location	Salary Sched	Range / Step	Comp Months	Split / Count	Annual Salaries	COLA	Premium Pay	Annual Benefits	Total Costs	UGF Amount
06-6241	Certified Nurse Aide 1	FT	A	GP	Fairbanks	103	11N	12.0		59,144	4,618	6,250	46,046	116,058	7,196
06-6242	Certified Nurse Aide 1	FT	A	GP	Fairbanks	103	11K / L	12.0		53,796	4,241	6,250	43,840	108,127	6,704
06-6243	Nurse 2	FT	A	GP	Anchorage	100	22F / G	12.0		100,936	7,570	6,250	63,285	178,041	11,039
06-7019	Nurse 3	FT	A	SS	Palmer	100	24M / N	12.0		136,230	0	6,250	81,826	224,306	9,129
06-9504	Certified Nurse Aide 1	FT	A	GP	Ketchikan	100	11A / B	12.0		40,935	3,332	6,250	38,534	89,051	5,521
06-N09002	Certified Nurse Aide 1	NP	N	GP	Ketchikan	100	11D / E	12.0		45,455	3,717	20,808	8,071	78,051	4,839
06-N09003	Licensed Practical Nurse	NP	N	GP	Ketchikan	100	17D / E	12.0		68,757	3,857	0	8,375	80,989	5,021
06-N09004	Nurse 1	NP	N	GP	Ketchikan	100	21D / E	12.0		89,798	5,037	0	10,937	105,772	6,558
06-N09005	Nurse 2	NP	N	GP	Ketchikan	100	22D / E	12.0		96,116	5,391	0	11,707	113,214	7,019
06-N09018	Certified Nurse Aide 1	NP	A	GP	Juneau	105	11D / E	12.0		47,736	3,868	21,224	8,399	81,227	5,036
06-N09020	Certified Nurse Aide 1	NP	A	GP	Anchorage	100	11D / E	12.0		45,455	2,550	0	5,536	53,541	3,320
06-N09021	Licensed Practical Nurse	NP	N	GP	Anchorage	100	17D / E	12.0		68,757	3,857	0	8,375	80,989	5,021
06-N09031	Certified Nurse Aide 1	NP	A	GP	Sitka	105	11A	12.0		42,296	2,372	0	5,152	49,820	3,089
06-N09033	Nurse 2	NP	N	GP	Sitka	105	22A	12.0		88,121	4,943	0	10,733	103,797	6,435
06-N09043	Certified Nurse Aide 1	NP	N	GP	Fairbanks	103	11D / E	12.0		46,820	2,626	0	5,703	55,149	3,419
06-N09044	Licensed Practical Nurse	NP	N	GP	Fairbanks	103	17D / E	12.0		70,824	3,973	0	8,626	83,423	5,172
06-N09045	Nurse 2	NP	N	GP	Fairbanks	103	22B / C	12.0		92,489	5,188	0	11,265	108,942	6,754
06-N09086	Nurse 2	NP	N	GP	Palmer	100	22D / E	12.0		96,116	5,391	0	11,707	113,214	4,721
06-N09087	Certified Nurse Aide 1	NP	N	GP	Palmer	100	11D / E	12.0		45,455	4,149	28,508	9,009	87,121	3,633
06-N15001	Licensed Practical Nurse	NP	N	GP	Palmer	100	17B / C	12.0		64,194	3,601	0	7,819	75,614	3,153
06-N15002	Assisted Living Aide	NP	N	GP	Palmer	100	9D / E	12.0		40,287	2,260	0	4,907	47,454	1,979
06-N18007	Assisted Living Aide	NP	N	GP	Juneau	205	9D / E	12.0		41,925	2,701	6,228	5,865	56,719	3,517
06-N18029	Assisted Living Aide	NP	N	GP	Ketchikan	100	9D / E	12.0		40,287	2,595	5,983	5,636	54,501	3,379
06-N20005	Licensed Practical Nurse	NP	N	GP	Juneau	105	17A	12.0		62,654	3,514	0	7,631	73,799	4,576
06-N20006	Nurse 1	NP	A	GP	Juneau	105	21A	12.0		82,544	4,630	0	10,054	97,228	6,028
06-N21293	Assisted Living Aide	NP	N	GP	Anchorage	100	9B / C	12.0		37,791	2,120	0	4,603	44,514	2,760
06-N21294	Assisted Living Aide	NP	N	GP	Sitka	205	9D / E	12.0		41,925	2,701	6,228	5,865	56,719	3,517
06-N21295	Assisted Living Aide	NP	N	GP	Fairbanks	203	9D / E	12.0		41,126	2,436	2,313	5,291	51,166	3,172
06-N21383	Licensed Practical Nurse	NP	N	GP	Sitka	105	17L	12.0		85,625	4,902	0	31,478	122,005	7,564
06-N22018	Nurse 1	NP	N	GP	Palmer	100	21C / D	12.0		87,068	4,884	0	10,605	102,557	4,277
06-N22123	Nurse 2	NP	N	GP	Anchorage	100	22B / C	12.0		89,798	5,037	0	10,937	105,772	6,558
06-X113	Pharmacist (Adv Cert)	FT	A	XE	Anchorage	N00	27	12.0		150,910	0	0	85,159	236,069	14,636
06-X114	Pharmacist(Lead W/No Adv Cert)	FT	A	XE	Anchorage	N00	27	12.0		145,100	0	0	82,762	227,862	14,127
26-N23008	Nurse 2	NP	A	GP	Juneau	105	22A	12.0		88,121	4,943	0	10,733	103,797	6,435
26-N23017	Pharmacy Technician	NP	N	GP	Anchorage	100	12B / C	12.0		45,455	2,550	0	5,536	53,541	3,320

Note: If a position is split, an asterisk (*) will appear in the Split/Count column. If the split position is also counted in the component, two asterisks (**) will appear in this column. [No valid job title] appearing in the Job Class Title indicates that the PCN has an invalid class code or invalid range for the class code effective date of this scenario.

Personal Services Expenditure Detail
Department of Family and Community Services

Scenario: FY2025 Governor (20959)
Component: Pioneer Homes (3323)
RDU: Alaska Pioneer Homes (503)

PCN	Job Class Title	Time Status	Retire Code	Barg Unit	Location	Salary Sched	Range / Step	Comp Months	Split / Count	Annual Salaries	COLA	Premium Pay	Annual Benefits	Total Costs	UGF Amount
	Total Positions		New	Deleted										Total Salary Costs:	27,426,340
														Total COLA:	1,657,899
	Full Time Positions:	414	0	1										Total Premium Pay:	1,955,892
	Part Time Positions:	9	0	0										Total Benefits:	19,666,421
	Non Permanent Positions:	28	0	0											
	Positions in Component:	451	0	1											
	Total Component Months:	5,372.0													
														Total Pre-Vacancy:	50,706,552
														Minus Vacancy Adjustment of 4.92%:	(2,492,552)
														Total Post-Vacancy:	48,214,000
														Plus Lump Sum Premium Pay:	0
														Personal Services Line 100:	48,214,000

PCN Funding Sources:	Pre-Vacancy	Post-Vacancy	Percent
1002 Federal Receipts	2,694,160	2,561,725	5.31%
1004 Unrestricted General Fund Receipts	2,966,145	2,820,340	5.85%
1005 General Fund/Program Receipts	25,631,353	24,371,407	50.55%
1007 Interagency Receipts	18,704,057	17,784,633	36.89%
1108 Statutory Designated Program Receipts	710,837	675,895	1.40%
Total PCN Funding:	50,706,552	48,214,000	100.00%

Note: If a position is split, an asterisk (*) will appear in the Split/Count column. If the split position is also counted in the component, two asterisks (**) will appear in this column. [No valid job title] appearing in the Job Class Title indicates that the PCN has an invalid class code or invalid range for the class code effective date of this scenario.

Department of Family and Community Services

Division of Alaska Pioneer Homes

Central Office

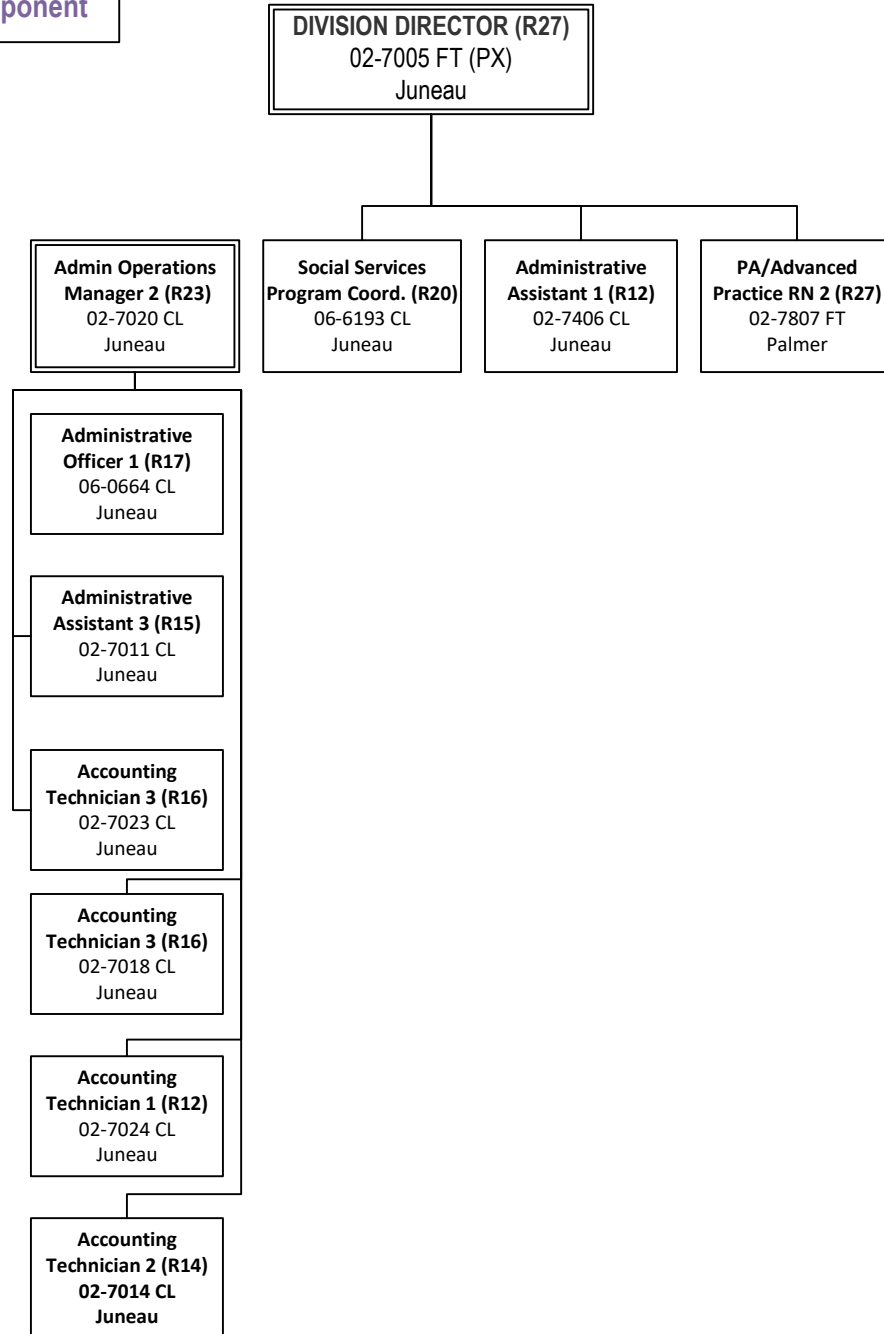
Alaska Pioneer Homes Management Component

PAGE

1 OF 1

REVISED

11/13/2023



Department of Family and Community Services

Division of Alaska Pioneer Homes

Anchorage Pioneer Home

Pioneer Homes Component

PAGE

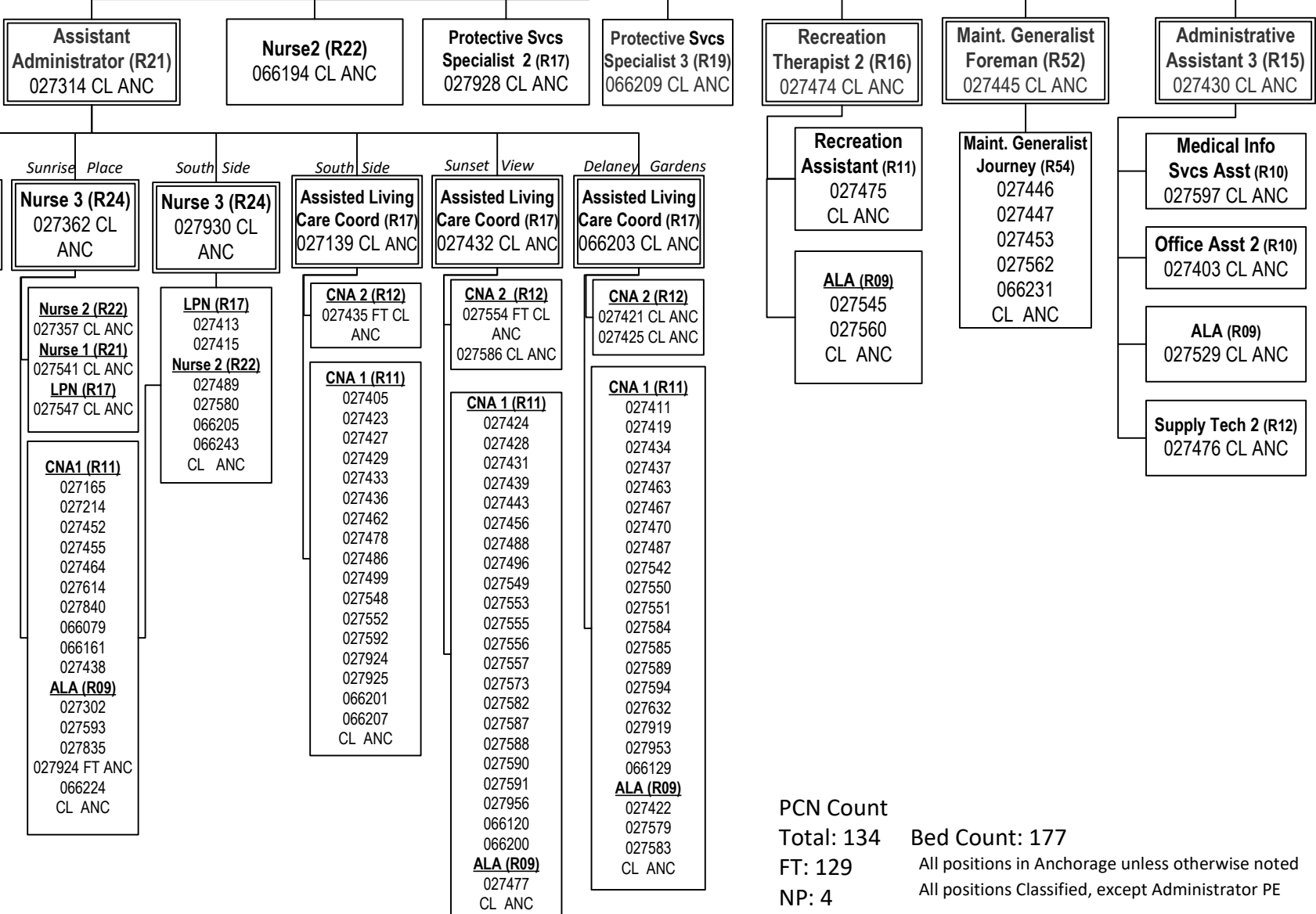
1 OF 7

REVISED

11/13/2023

**PIONEERS HOME
ADMINISTRATOR (R23)**
027540 PX Anchorage

PA/Advanced
Practice RN 2 (R24)
02-7807 CL Palmer



Physical Therapist (R18) *
027408 CL ANC

On-Call Nurse 2 (R22) *
06N22123

On-Call LPN (R17) *
06N09021

On-Call CNA1 (R11) *
06N09020

On-Call ALA (R09) *
06N21293

PCN Count

Total: 134

FT: 129

NP: 4

PT: 1

Bed Count: 177

All positions in Anchorage unless otherwise noted

All positions Classified, except Administrator PE

* Reports to Assistant Administrator 027362

Department of Family and Community Services

Division of Alaska Pioneer Homes
 Alaska Veterans and Pioneers Home
 Pioneer Homes Component

PAGE

2 OF 7

REVISED

11/13/2023

PA/Advanced
 Practice RN 2 (R24)
 02-7807 CL Palmer

**PIONEERS HOME
 ADMINISTRATOR (R23)**
 027007 (PX) Palmer

Nurse 3 (R24)
 027310 CL Palmer

LPN (R17)
 027306
 027318
 027342
Nurse 2 (R22)
 027308
 027369
 027824
 CL Palmer

CNA 1 (R11)
 027317
 027326
 027329
 027330
 027332
 027333
 027334
 027335
 027339
 027351
 027352
 027356
 027359
 027375
 027391
 027392
 027393
 027907
 027908
 066235
 066236
 066237
ALA (R09)
 066213
 CL Palmer

Nurse 3 (R24)
 027394 CL Palmer

NURSE 2 (R22)
 027390
 027958
 066211
 066212
LPN (R17)
 027397
 CL Palmer

CNA 2 (R12) **
 027121 FT
 027322 FT
 CL Palmer

CNA 1 (R11)
 027304
 027305
 027307
 027309
 027313
 027319
 027320
 027323
 027325
 027327
 027328
 027398
 027399
 027918
 066214
 CL Palmer

Nurse 3 (R24)
 067019 CL Palmer

On-Call Nurse 2 (R22)
 06N09086

On-Call Nurse 1 (R21)
 06N22018

On-Call LPN (R17)
 06N15001

On-Call CNA 1 (R11)
 06N09087

On-Call ALA (R09)
 06N15002

**Recreation
 Therapist 2 (R16)**
 027338 CL Palmer

ALA (R09)
 027340
 027312
 027336
 027383
 CL Palmer

**Maint. Generalist
 Foreman (R52)**
 027343 CL Palmer

**Maint. Generalist
 Journey (R54)**
 027346
 066220
 CL Palmer

**Protective Services
 Specialist 3 (R19)**
 027341 CL Palmer

**Administrative
 Assistant 3 (R15)**
 027303 CL Palmer

Supply Tech 2 (R12)
 027396 CL Palmer

**Medical Information
 Services Assistant (R10)**
 027909 CL Palmer

ALA (R09)
 027321 CL Palmer

Office Assistant 2 (R10)
 027350 CL Palmer

PCN Count
 Total: 74
 FT: 64
 NP: 5
 PT: 5

Bed Count: 79
 All positions located in Palmer unless otherwise noted
 CNA 2 positions serve as leads for all direct care CNA 1/ALA positions

Department of Family and Community Services
Division of Alaska Pioneer Homes
Fairbanks Pioneer Home
Pioneer Homes Component

PA/Advanced
Practice RN 2
02-7807 R24 CL Palmer

**PIONEERS HOME
ADMINISTRATOR (R23)**
027200 PX Fairbanks

Assistant Administrator (R21)
027946 R21 CL FBX

**Maintenance
Generalist Foreman (R52)**
027251 CL FBX

**Protective Services
Specialist 3 (R19)**
027226 CL FBX

**Administrative
Assistant 3 (R15)**
027202 CL FBX

Nurse 3 (R24)
027213 CL FBX

Nurse 3 (R24)
027216 CL
FBX

**Assisted Living
Care Coord (R17)**
027208 CL FBX

Nurse 2 (R22)
027211
027212
027223
027227
LPN (R17)
027218
Nurse 1 (R21)
027245
CL FBX

ALA (R09)
027203
027220
027222
027225
027233
027238
CNA 1 (R11)
027205
027209
027210
027215
027219
027224
027229
027231
027234
027235
027236
027237
027931
027240
CL FBX

**Maintenance
Generalist Journey (R54)**
027256
027265
027290
CL FBX

**Protective Services
Specialist 1 (R15)**
027207 CL FBX

CNA 1 (R11)
027126
027230
ALA (R09)
027247
027941
CL FBX

Supply Tech 2 (R12)
027204 CL FBX

**Administrative
Assistant 1 (R12)**
027284 CL FBX

Nurse 2 (R22)
027217
LPN (R17)
027221
027228

CNA 2 (R12)
027137 FT
066192
066196
CL FBX

**On-Call Nurse 2
(R22)**
06N09045

**On-Call Nurse 1
(R21)**
26N24004

**On-call LPN
(R17)**
06N09044

CNA 1 (R11)
027932
027933
027935
027936
066040
066195
066199
066241
066242
ALA (R09)
027937
CL FBX

**On-Call CNA1
(R11)**
06N09043

**On-Call ALA
(R09)**
06N21295

ALA (R09)
027109 FT
027201
027298
CNA1 (R11)
027241
027246
027249
027252
027270
027276
066147
CL FBX

PCN Count
Total: 75
FT: 70
NP: 5
PT: 0

Bed Count: 91
All positions located in Fairbanks unless otherwise noted
* Reports to Assistant Administrator 02-7946
** Reports to Nurse 3 02-7216
*** Reports to Assisted Living Care Coordinator 02-027208

Department of Family and Community Services

Division of Alaska Pioneer Homes

Juneau Pioneer Home

Pioneer Homes Component

PAGE

4 OF 7

REVISED

11/13/2023

PA/Advanced
Practice RN 2 (R24)
02-7807 CL Palmer

**PIONEERS HOME
ADMINISTRATOR (R23)**
027800 PX Juneau

Assistant Administrator (R21)
027839 CL JNU

CNA 1 (R11)
027832 CL JNU
027843 CL JNU

**Protective Services
Specialist 3 (R19)**
027805 CL JNU

**Maintenance Generalist
Foreman (R52)**
027804 CL JNU

**Administrative
Assistant 3 (R15)**
027806 CL JNU

**Recreation
Therapist 2 (R16)**
027812 CL JNU

Nurse 3 (R24)
027816 CL JNU

Nurse 3 (R24)
027818 CL JNU

**Assisted Living
Care Coord. (R17)**
027819 CL JNU

CNA 2 (R12)
027831 CL JNU

**Maintenance Generalist
Journey (R54)**
027810 CL JNU

**Administrative
Assistant 1 (R12)**
027838 CL JNU

**Assisted Living Aide
(R09)**
027016
027815
066190
CL JNU

LPN (R17)
027817
027820
027823
066232
Nurse 1 (R21)
066188
CL JNU

ALA (R09)
027802
027813
027830
027801
CNA 1 (R11)
027814
027829
027904
066223
CL JNU

CNA 1 (R11)
027244
027803
027825
027826
027828
027833
027834
027836
027841
027842
066189
066225
ALA (R09)
027821
027822
027827
CL JNU

On-Call Nurse 2 (R22)
26N23008

On-Call Nurse 1 (R21)
06N20006

On-Call LPN (R17)
06N20005

On-Call CNA 1 (R11)
06N09018

On-Call ALA (R09)
06N18007

PCN Count
Total: 50
FT: 44
NP: 5
PT: 1

Bed Count: 49

All positions located in Juneau unless otherwise noted
All positions Classified, exempt Administrator Partially Exempt
CNA 2 serves as lead for all direct care staff CNA 1/ALAs

**PIONEERS HOME
ADMINISTRATOR (R23)**
027600 PX Ketchikan

PA/Advanced
Practice RN 2 (R24)
02-7807 CL Palmer

Assistant Administrator (R21)
027611 CL KTN

**Maintenance Generalist
Foreman (R52)**
027635 CL KTN

**Protective Services
Specialist 3 (R19)**
027623 CL KTN

Administrative Asst 3 (R15)
027670 CL KTN

Nurse 3 (R24)
027610 CL
KTN

**Assisted Living Care
Coordinator (R17)**
066239 CL KTN

Nurse 2 (R22)
066240
CL KTN

Nurse 2 (R22)
027605
LPN (R17)
027607
Nurse 1 (R21)
027926
CL KTN

**On-Call Nurse 2
(R22)**
06N09005

**Maintenance Generalist
Journey (R54)**
027638 CL KTN

**Protective Services
Specialist 1 (R15)**
027631 CL KTN

Administrative Asst 1 (R12)
027602 CL KTN

CNA 2 (R12)
027621
027630
027669
CL KTN

**On-Call CNA 1
(R11)**
06N09002

CNA 1 (R11)
027119
027601
027603
027606
027608
027609
027616
027618
027671
027945
066206
066238
069504

**On-Call ALA
(R09)**
06N18029

CNA 2 (R12)
027613
027634
ALA (R09)
027170
027615
027617
027619
027620
027633
027648
027943
027944

**On-Call Nurse 1
(R21)**
06N09004

On-Call LPN (R17)
06N09003

PCN Count
Total: 48
FT: 42
NP: 5
PT: 1

Bed Count: 45

All positions located in Ketchikan unless otherwise noted
All positions Classified, except Administrator Partially Exempt

* Reports to Assistant Administrator 02-7611
** Reports to ALCC 06-6239

Department of Family and Community Services

Division of Alaska Pioneer Homes

Sitka Pioneer Home

Pioneer Homes Component

PAGE

6 OF 7

REVISED

11/13/2023

**PIONEERS HOME
ADMINISTRATOR (R23)**
027100 PX SITKA

PA/Advanced
Practice RN 2 (R24)
02-7807 CL Palmer

**Pioneer Home Assistant
Administrator (R21) 066230**
CL Sitka

**Recreation Therapist 1
(R14)**
027108 CL Sitka

**Maintenance
Generalist Foreman (R52)**
027104 CL Sitka

**Protective Services
Specialist 3 (R19)**
027142 CL Sitka

**Administrative
Assistant 3 (R15)**
027101 CL Sitka

Nurse 3 (R24)
027110 CL Sitka

Nurse 3 (R24)
027111 CL Sitka

Nurse 2 (R22)
027106, 027112
027114, 027118
027158, 066226
Nurse 1 (R21)
027117
CL Sitka

Recreation Asst. (R11)
027177 CL Sitka

**Maintenance
Generalist Journey (R54)**
027146
027148
027152
CL Sitka

Supply Tech 2 (R12)
027102 CL Sitka

**Medical Information
Services Assistant (R10)**
027197 CL Sitka

CNA 1 (R11)
027143
027144
027164
027178
027901
027903
027905
027913
027949
027950
066210
066228
ALA (R09)
027159
027912
027934
066217
CL Sitka

CNA 1(R11)
027120
027122
027120
027127
027128
027130
027131
027133
027134
027135
027136
027138
027140
ALA (R09)
027124
027129

CNA 2 (R12)
027105
027132
027141
CL Sitka

On-Call LPN (R17)
06N21383

On-Call Nurse 2 (R22)
06N09033

ALA (R09)
027951 CL Sitka

On-call ALA (R09)
06N21294

On-Call CNA 1 (R11)
06N09031

PCN Count
Total: 62
FT: 58
NP: 4
PT: 0

Bed Count: 65
All positions located in Sitka unless otherwise noted
All positions Classified, expect Administrator Partially Exempt

CNA 2 positions act as leads to various CNA1/ALA positions as needed