

**Department of Family and Community Services**

**Division of Alaska Pioneer Homes**

**Central Office**

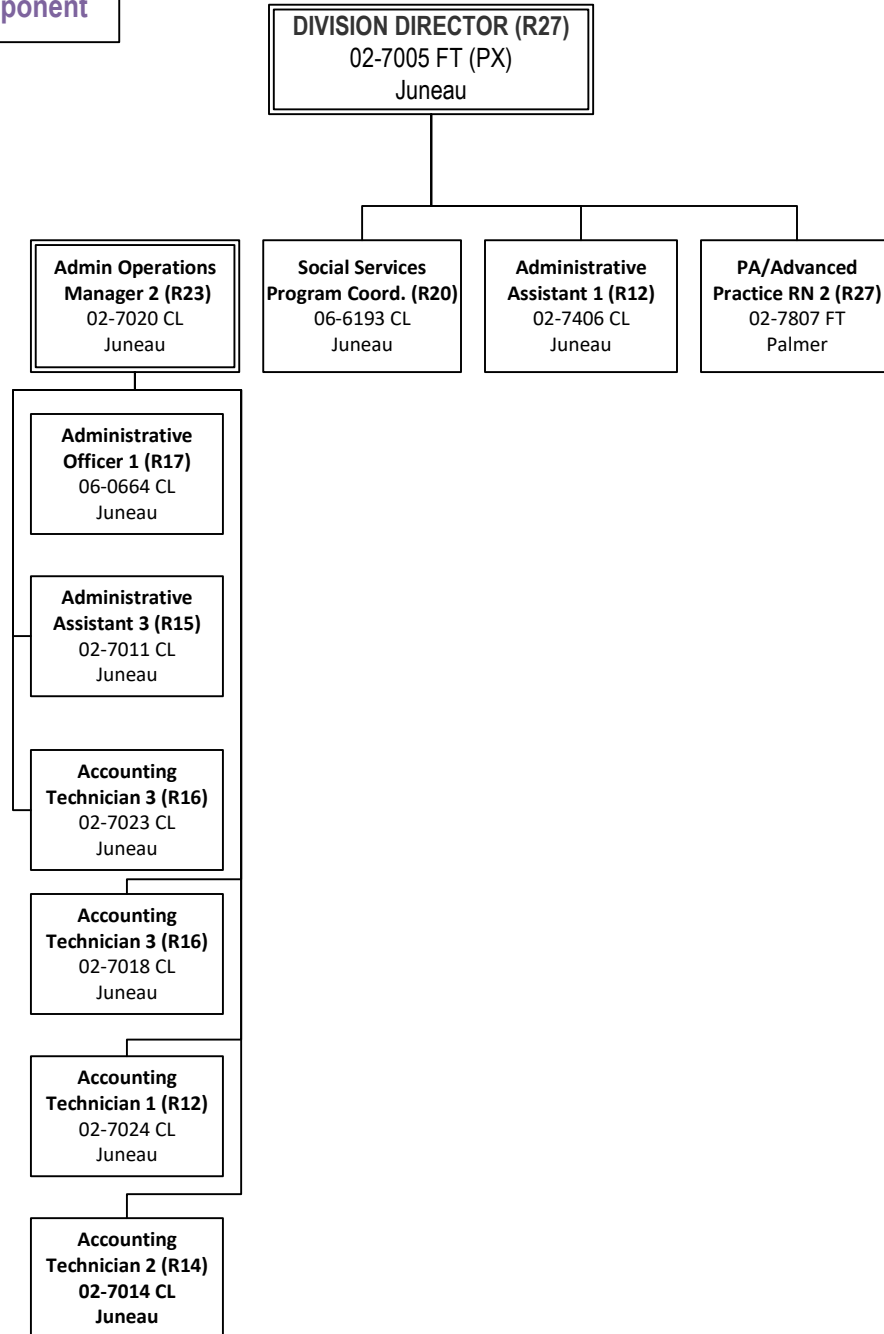
**Alaska Pioneer Homes Management Component**

PAGE

1 OF 1

REVISED

11/13/2023



**Department of Family and Community Services**

**Division of Alaska Pioneer Homes**

**Anchorage Pioneer Home**

**Pioneer Homes Component**

PAGE

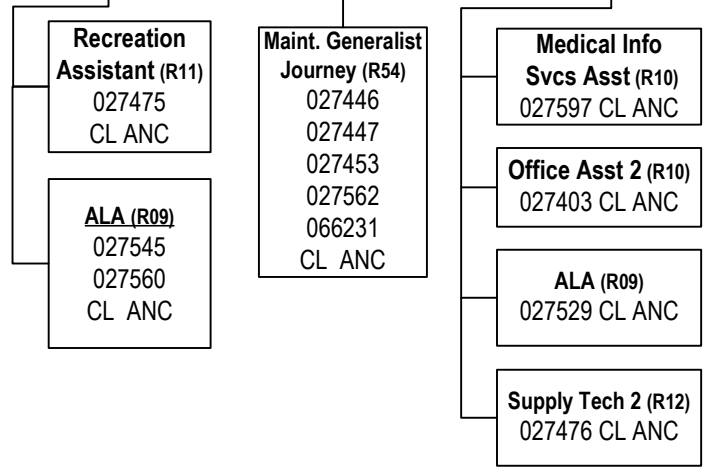
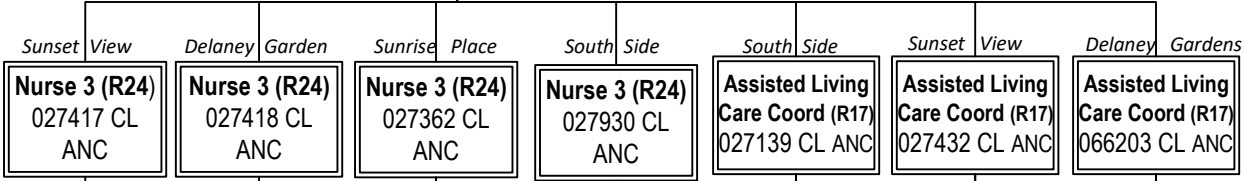
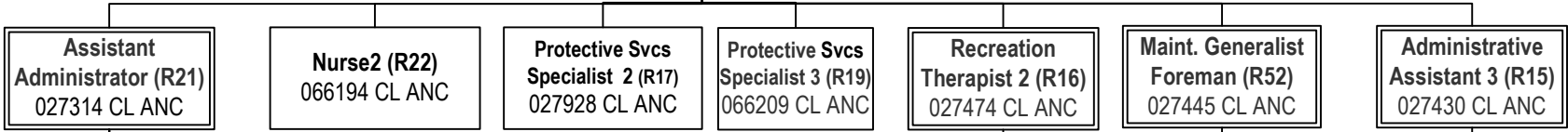
1 OF 7

REVISED

11/13/2023

PA/Advanced  
Practice RN 2 (R24)  
02-7807 CL Palmer

**PIONEERS HOME  
ADMINISTRATOR (R23)**  
027540 PX Anchorage



**Physical Therapist (R18) \***  
027408 CL ANC

**On-Call Nurse 2 (R22) \***  
06N22123

**On-Call LPN (R17) \***  
06N09021

**On-Call CNA1 (R11) \***  
06N09020

**On-Call ALA (R09) \***  
06N21293

PCN Count

Total: 134

FT: 129

NP: 4

PT: 1

Bed Count: 177

All positions in Anchorage unless otherwise noted

All positions Classified, except Administrator PE

\* Reports to Assistant Administrator 027362

**Department of Family and Community Services**

**Division of Alaska Pioneer Homes  
Alaska Veterans and Pioneers Home  
Pioneer Homes Component**

PAGE

2 OF 7

REVISED

11/13/2023

PA/Advanced  
Practice RN 2 (R24)  
02-7807 CL Palmer

**PIONEERS HOME  
ADMINISTRATOR (R23)**  
027007 (PX) Palmer

**Nurse 3 (R24)**  
027310 CL Palmer

**LPN (R17)**  
027306  
027318  
027342  
**Nurse 2 (R22)**  
027308  
027369  
027824  
CL Palmer

**CNA 1 (R11)**  
027317  
027326  
027329  
027330  
027332  
027333  
027334  
027335  
027339  
027351  
027352  
027356  
027359  
027375  
027391  
027392  
027393  
027907  
027908  
066235  
066236  
066237  
**ALA (R09)**  
066213  
CL Palmer

**Nurse 3 (R24)**  
027394 CL Palmer

**NURSE 2 (R22)**  
027390  
027958  
066211  
066212  
**LPN (R17)**  
027397  
CL Palmer

**CNA 2 (R12) \*\***  
027121 FT  
027322 FT  
CL Palmer

**CNA 1 (R11)**  
027304  
027305  
027307  
027309  
027313  
027319  
027320  
027323  
027325  
027327  
027328  
027398  
027399  
027918  
066214  
CL Palmer

**Nurse 3 (R24)**  
067019 CL Palmer

**On-Call Nurse 2 (R22)**  
06N09086

**On-Call Nurse 1 (R21)**  
06N22018

**On-Call LPN (R17)**  
06N15001

**On-Call CNA 1 (R11)**  
06N09087

**On-Call ALA (R09)**  
06N15002

**Recreation  
Therapist 2 (R16)**  
027338 CL Palmer

**ALA (R09)**  
027340  
027312  
027336  
027383  
CL Palmer

**Maint. Generalist  
Foreman (R52)**  
027343 CL Palmer

**Maint. Generalist  
Journey (R54)**  
027346  
066220  
CL Palmer

**Protective Services  
Specialist 3 (R19)**  
027341 CL Palmer

**Administrative  
Assistant 3 (R15)**  
027303 CL Palmer

**Supply Tech 2 (R12)**  
027396 CL Palmer

**Medical Information  
Services Assistant (R10)**  
027909 CL Palmer

**ALA (R09)**  
027321 CL Palmer

**Office Assistant 2 (R10)**  
027350 CL Palmer

PCN Count  
Total: 74  
FT: 64  
NP: 5  
PT: 5

Bed Count: 79  
All positions located in Palmer unless otherwise noted  
CNA 2 positions serve as leads for all direct care CNA 1/ALA positions

**Department of Family and Community Services**  
**Division of Alaska Pioneer Homes**  
**Fairbanks Pioneer Home**  
**Pioneer Homes Component**

PA/Advanced  
 Practice RN 2  
 02-7807 R24 CL Palmer

**PIONEERS HOME  
 ADMINISTRATOR (R23)**  
 027200 PX Fairbanks

**Assistant Administrator (R21)**  
 027946 R21 CL FBX

**Maintenance  
 Generalist Foreman (R52)**  
 027251 CL FBX

**Protective Services  
 Specialist 3 (R19)**  
 027226 CL FBX

**Administrative  
 Assistant 3 (R15)**  
 027202 CL FBX

**Nurse 3 (R24)**  
 027213 CL FBX

**Nurse 3 (R24)**  
 027216 CL  
 FBX

**Assisted Living  
 Care Coord (R17)**  
 027208 CL FBX

**Nurse 2 (R22)**  
 027211  
 027212  
 027223  
 027227  
**LPN (R17)**  
 027218  
**Nurse 1 (R21)**  
 027245  
 CL FBX

**ALA (R09)**  
 027203  
 027220  
 027222  
 027225  
 027233  
 027238  
**CNA 1 (R11)**  
 027205  
 027209  
 027210  
 027215  
 027219  
 027224  
 027229  
 027231  
 027234  
 027235  
 027236  
 027237  
 027931  
 027240  
 CL FBX

**Maintenance  
 Generalist Journey (R54)**  
 027256  
 027265  
 027290  
 CL FBX

**Protective Services  
 Specialist 1 (R15)**  
 027207 CL FBX

**CNA 1 (R11)**  
 027126  
 027230  
**ALA (R09)**  
 027247  
 027941  
 CL FBX

**Supply Tech 2 (R12)**  
 027204 CL FBX

**Administrative  
 Assistant 1 (R12)**  
 027284 CL FBX

**Nurse 2 (R22)**  
 027217  
**LPN (R17)**  
 027221  
 027228

**CNA 2 (R12)**  
 027137 FT  
 066192  
 066196  
 CL FBX

**On-Call Nurse 2  
 (R22)**  
 06N09045

**On-Call Nurse 1  
 (R21)**  
 26N24004

**On-call LPN  
 (R17)**  
 06N09044

**CNA 1 (R11)**  
 027932  
 027933  
 027935  
 027936  
 066040  
 066195  
 066199  
 066241  
 066242  
**ALA (R09)**  
 027937  
 CL FBX

**On-Call CNA1  
 (R11)**  
 06N09043

**On-Call ALA  
 (R09)**  
 06N21295

**ALA (R09)**  
 027109 FT  
 027201  
 027298  
**CNA1 (R11)**  
 027241  
 027246  
 027249  
 027252  
 027270  
 027276  
 066147  
 CL FBX

PCN Count  
 Total: 75  
 FT: 70  
 NP: 5  
 PT: 0

Bed Count: 91  
 All positions located in Fairbanks unless otherwise noted  
 \* Reports to Assistant Administrator 02-7946  
 \*\* Reports to Nurse 3 02-7216  
 \*\*\* Reports to Assisted Living Care Coordinator 02-027208

**Department of Family and Community Services**

**Division of Alaska Pioneer Homes**

**Juneau Pioneer Home**

**Pioneer Homes Component**

PAGE

4 OF 7

REVISED

11/13/2023

PA/Advanced  
Practice RN 2 (R24)  
02-7807 CL Palmer

**PIONEERS HOME  
ADMINISTRATOR (R23)**  
027800 PX Juneau

**Assistant Administrator (R21)**  
027839 CL JNU

**CNA 1 (R11)**  
027832 CL JNU  
027843 CL JNU

**Protective Services  
Specialist 3 (R19)**  
027805 CL JNU

**Maintenance Generalist  
Foreman (R52)**  
027804 CL JNU

**Administrative  
Assistant 3 (R15)**  
027806 CL JNU

**Recreation  
Therapist 2 (R16)**  
027812 CL JNU

**Nurse 3 (R24)**  
027816 CL JNU

**Nurse 3 (R24)**  
027818 CL JNU

**Assisted Living  
Care Coord. (R17)**  
027819 CL JNU

**CNA 2 (R12)**  
027831 CL JNU

**Maintenance Generalist  
Journey (R54)**  
027810 CL JNU

**Administrative  
Assistant 1 (R12)**  
027838 CL JNU

**Assisted Living Aide  
(R09)**  
027016  
027815  
066190  
CL JNU

**LPN (R17)**  
027817  
027820  
027823  
066232  
**Nurse 1 (R21)**  
066188  
CL JNU

**ALA (R09)**  
027802  
027813  
027830  
027801  
**CNA 1 (R11)**  
027814  
027829  
027904  
066223  
CL JNU

**CNA 1 (R11)**  
027244  
027803  
027825  
027826  
027828  
027833  
027834  
027836  
027841  
027842  
066189  
066225  
**ALA (R09)**  
027821  
027822  
027827  
CL JNU

**On-Call Nurse 2 (R22)**  
26N23008

**On-Call Nurse 1 (R21)**  
06N20006

**On-Call LPN (R17)**  
06N20005

**On-Call CNA 1 (R11)**  
06N09018

**On-Call ALA (R09)**  
06N18007

PCN Count  
Total: 50  
FT: 44  
NP: 5  
PT: 1

Bed Count: 49

All positions located in Juneau unless otherwise noted  
All positions Classified, exempt Administrator Partially Exempt  
CNA 2 serves as lead for all direct care staff CNA 1/ALAs

**PIONEERS HOME  
ADMINISTRATOR (R23)**  
027600 PX Ketchikan

PA/Advanced  
Practice RN 2 (R24)  
02-7807 CL Palmer

**Assistant Administrator (R21)**  
027611 CL KTN

**Maintenance Generalist  
Foreman (R52)**  
027635 CL KTN

**Protective Services  
Specialist 3 (R19)**  
027623 CL KTN

**Administrative Asst 3 (R15)**  
027670 CL KTN

**Nurse 3 (R24)**  
027610 CL  
KTN

**Assisted Living Care  
Coordinator (R17)**  
066239 CL KTN

**Nurse 2 (R22)**  
066240  
CL KTN

**Nurse 2 (R22)**  
027605  
**LPN (R17)**  
027607  
**Nurse 1 (R21)**  
027926  
CL KTN

**On-Call Nurse 2  
(R22)**  
06N09005

**Maintenance Generalist  
Journey (R54)**  
027638 CL KTN

**Protective Services  
Specialist 1 (R15)**  
027631 CL KTN

**Administrative Asst 1 (R12)**  
027602 CL KTN

**CNA 2 (R12)**  
027621  
027630  
027669  
CL KTN

**On-Call CNA 1  
(R11)**  
06N09002

**CNA 1 (R11)**  
027119  
027601  
027603  
027606  
027608  
027609  
027616  
027618  
027671  
027945  
066206  
066238  
069504

**On-Call ALA  
(R09)**  
06N18029

**CNA 2 (R12)**  
027613  
027634  
**ALA (R09)**  
027170  
027615  
027617  
027619  
027620  
027633  
027648  
027943  
027944

**On-Call Nurse 1  
(R21)**  
06N09004

**On-Call LPN (R17)**  
06N09003

PCN Count  
Total: 48  
FT: 42  
NP: 5  
PT: 1

Bed Count: 45

All positions located in Ketchikan unless otherwise noted  
All positions Classified, except Administrator Partially Exempt

\* Reports to Assistant Administrator 02-7611  
\*\* Reports to ALCC 06-6239

**Department of Family and Community Services**

**Division of Alaska Pioneer Homes**

**Sitka Pioneer Home**

**Pioneer Homes Component**

PAGE

6 OF 7

REVISED

11/13/2023

**PIONEERS HOME  
ADMINISTRATOR (R23)**  
027100 PX SITKA

PA/Advanced  
Practice RN 2 (R24)  
02-7807 CL Palmer

**Pioneer Home Assistant  
Administrator (R21) 066230**  
CL Sitka

**Recreation Therapist 1  
(R14)**  
027108 CL Sitka

**Maintenance  
Generalist Foreman (R52)**  
027104 CL Sitka

**Protective Services  
Specialist 3 (R19)**  
027142 CL Sitka

**Administrative  
Assistant 3 (R15)**  
027101 CL Sitka

**Nurse 3 (R24)**  
027110 CL Sitka

**Nurse 3 (R24)**  
027111 CL Sitka

**Nurse 2 (R22)**  
027106, 027112  
027114, 027118  
027158, 066226  
**Nurse 1 (R21)**  
027117  
CL Sitka

**Recreation Asst. (R11)**  
027177 CL Sitka

**Maintenance  
Generalist Journey (R54)**  
027146  
027148  
027152  
CL Sitka

**Supply Tech 2 (R12)**  
027102 CL Sitka

**Medical Information  
Services Assistant (R10)**  
027197 CL Sitka

**CNA 1 (R11)**  
027143  
027144  
027164  
027178  
027901  
027903  
027905  
027913  
027949  
027950  
066210  
066228  
**ALA (R09)**  
027159  
027912  
027934  
066217  
CL Sitka

**CNA 1(R11)**  
027120  
027122  
027120  
027127  
027128  
027130  
027131  
027133  
027134  
027135  
027136  
027138  
027140  
**ALA (R09)**  
027124  
027129

**CNA 2 (R12)**  
027105  
027132  
027141  
CL Sitka

**On-Call LPN (R17)**  
06N21383

**On-Call Nurse 2 (R22)**  
06N09033

**Assisted Living Aide (R09)**  
027180  
027176  
CL Sitka

**ALA (R09)**  
027951 CL Sitka

**On-call ALA (R09)**  
06N21294

**On-Call CNA 1 (R11)**  
06N09031

PCN Count  
Total: 62  
FT: 58  
NP: 4  
PT: 0

Bed Count: 65  
All positions located in Sitka unless otherwise noted  
All positions Classified, expect Administrator Partially Exempt

*CNA 2 positions act as leads to various CNA1/ALA positions as needed*