

State of Alaska FY2025 Governor's Operating Budget

Department of Transportation and Public Facilities Central Design, Engineering, and Construction Component Budget Summary

Component: Central Design, Engineering, and Construction

Contribution to Department's Mission

Preserve and improve Alaska's transportation system and protect the health and safety of its traveling public by administering the construction of safe, environmentally sound, reliable, and cost-effective highways, airports, and buildings. Our commitment extends to enhancing Alaska's transportation and public infrastructure through project development and design. The division also provides a wide range of technical services to the department, other state and federal agencies, local governments, and the public.

Core Services

- Develop capital improvement projects (CIP) from initial planning through the creation of final plans, specifications, and construction advertising estimates.
- Ensure environmental compliance services during design development and construction, and maintenance and operations of facilities.
- Manage CIP program in accordance with project delivery timelines and available funding within various programs.
- Review projects for design standards, cost practicality, and constructability.
- Complete and maintain airport master plans, airport layout plans, and airport certification documents.
- Complete traffic studies, review crash data, and respond to public requests on safety related concerns.
- Conduct hydrological studies, geotechnical investigations, and surveying for capital projects and other agencies upon request.
- Manage highway rights of way including encroachment management and vacations, and the issuance of right-of-way and utility permits in compliance with regulations and statutes.
- Acquire real property in support of CIP projects.
- Conduct public involvement throughout project's design and construction process.
- Develop CIP project bid packages through formal advertisement and contract award.
- Coordinate with the Civil Rights Office in the administration of the Disadvantaged Business Enterprises program.
- Solicit and administer professional services agreements for design and construction-related professional services.
- Administer construction contracts including field inspection, issue progress payments, materials testing, contract compliance, and the administration of contract changes administration as necessary.
- Provide support for emergency and disaster response efforts when damages to transportation infrastructure require contractor repairs.
- Close projects per funding agency requirements.

Major Component Accomplishments in 2023

- Delivered a comprehensive program of bid-ready designs and contract documents for highway and airport projects, which are generally 90% federally funded.
- **Major Highway projects delivered:**
 - **Statewide:** Central Region Guardrail Inventory Upgrades
 - **Anchorage:** Anchorage Metropolitan Transportation Solutions (AMATS): Hiland Road Mile Post 0 to 3.2 Pavement Preservation, Artillery Road Overcrossing Emergency Repairs, McHugh Road Weather Information System Tower Upgrade.
 - **Mat-Su:** Glenn Highway: Parks Highway to S. Inner Springer Loop (Phase II); Glenn Highway: Parks to S. Inner Springer Lp. Pathway (Phase II); Colleen Street Intersection and Frontage Road, Mat-Su Borough Road Repairs - November 2018 earthquake.
 - **Kenai Peninsula:** Sterling Highway Mile Post 45-60 Reconstruction Construction Manager/General Contractor, Funny River Road Pavement Preservation and Cohoe Loop Road Mile Post 0-9.7 Pavement Preservation; Seward Highway Mile Post 0-8 Pavement Preservation; Seward Highway Milepost 61.5 Culvert Improvement; Homer Airport Improvements, Quartz Creek Bridge Replacement.
 - **Ted Stevens Anchorage International Airport (ANC):** ANC Taxiway Z West Improvements; ANC TW K and TL E Apron Rehabilitation; ANC Postmark Drive Repairs 2023; ANC RON 3 & 4 Rehabilitation.
 - **Rural:** Kwethluk Airport Rehabilitation; Bethel Tundra Ridge Road Rehabilitation; Mekoryuk Airport Rehabilitation

- Managed 172 projects, consisting of 141 highway projects and 31 aviation projects, each in various stages of preconstruction project development.
- Delivered a full program amounting to \$682,400.0, with \$487,500.0 allocated to highway projects and \$194,900.0 to aviation projects, in Federal Highway Administration construction funding obligations and Federal Aviation Administration grant funding. These projects advanced to construction despite the challenges posed by staffing shortages.
- **Seward Highway Mile Post 98.5 to 118 Bird Flats to Rabbit Creek** – Initiated the development of the environmental document to make safety improvements to the Seward Highway between Rabbit Creek and Bird Flats to eliminate the “Safety Corridor” designation of the highway. Intent to award was issued to HDR, Inc. on December 2nd. Extensive departmental, stakeholder, and public involvement have followed, and the team is currently working through Anchorage’s Context Sensitive Solutions process.
- **Sterling Safety Corridor Improvements Mile Post 82.5 to 92** – Working towards advertising the department’s first Progressive Design Build project. This will expedite construction and explore innovative community engagement methods, with the goal of eliminating the “Safety Corridor” designation of the highway as soon as possible.
- **Parks Highway Alternative Corridor Planning and Environmental Linkage (PEL) Study** – Conducted public, agency, and stakeholder engagement, resulting in the refinement of the purpose and need statement, and alternative screening criteria. Advanced the screening of alternatives and initiated the development of detailed alternatives. Study completion is temporarily paused pending a policy review.
- **Seward to Glenn Connection Planning and Environmental Linkage (PEL) Study** – Continuing public, agency, and stakeholder engagement. Developing five proposed alternatives for public input in late 2023, to be followed by screening. Refined alternative impact analysis planned for early 2024, with the study’s expected completion in mid-2024.
- Processed 725 permits for driveways, approach roads, utilities, and other right-of-way (ROW) encroachments collecting approximately \$273.0 of general fund/program receipts revenue.
- Programs to convert street lighting to light-emitting diode (LED) fixtures to reduce electrical costs are underway throughout the region.
- Ongoing efforts to carry out permanent repairs resulting from the November 30, 2018, earthquake. Only one minor project is still in the design phase and will likely need to acquire additional right-of-way.
- Central Region continues to increase staffing at the Mat-Su District Office to better address the transportation needs in this growing part of the state. The positive reception from the Mat-Su Borough, City of Palmer, City of Wasilla, legislators, and the public affirms these efforts.
- Central Region Materials Lab completed their Cement and Concrete Reference Laboratory accreditation assessment, continuing to meet Code of Federal Regulations (CFR) and federal funding requirements.
- Central Region remains committed to achieving consistent year-after-year reductions in fatalities and injuries, even amidst traffic and population growth. To achieve this objective, Central Region has implemented the state’s largest safety programs, with projects in various stages of design and construction. These projects focus on addressing lane departure, intersection, and vulnerable road user crashes, aligning with the Strategic Highway Safety Plan’s priorities to enhance safety for vulnerable roadway users. Central Region completed construction of pedestrian improvements at five sites and is progressing with the design phase for four additional sites slated for construction in the coming years.
- Central Region is heavily engaged with the University of Alaska Anchorage Civil Engineering program and is continuing to try to help address the huge shortage of Civil Engineers in the industry.
- Provided construction administration for 60 active construction projects, which included 18 awarded projects and 42 ongoing from the previous season. These projects were distributed across 25 communities in the Central Region, overseeing \$228,378.0 in contractor payments. \$35,299.0 of these payments contributed to improvements in remote Alaska communities, such as Kasigluk, Crooked Creek, Bethel, New Stuyahok, Kipnuk, Newtok, McGrath and Sleetmute.
- Administered \$43,654.0 in construction project work in the Anchorage area including continued work on the AMATS: Hiland Road Mile Post 0 to 3.2, A St: Northern Lights to 40th, AMATS: O’Malley Road, Dowling Road Roundabouts, Muldoon: Debarr to 36th, Minnesota Drive: Tudor to 15th and AMATS: Chugach Foothills Connector, Phase II projects.
- Administered \$39,843.0 in construction project work in the Mat-Su area including continued work on the Parks Highway 48.8 – 52.3, Knik-Goose Bay Reconstruction, and Parks Highway Bridge Replacement: Montana Creek, Sheep Creek, and Goose Creek projects.
- Administered \$96,323.0 in construction project work in the Kenai Peninsula area including continued work on the Seward Highway Mile Post 75-90 bridges, Funny River Road, Sterling Highway Mile Post 45-60 Stage 1A and

Phase 3 and 4, Seward Highway Mile Post 17-22.5, Quartz Creek Bridge, and Seward Mile Post 0-8 projects.

- Closed out 31 construction projects.
- Conducted formal department-contractor partnering on multiple projects in the region.
- Completed the repaving of 44 lane miles of roadways, 36.2 lane miles of airports, and improved 104.8 taxiway miles. Finalized the reconstruction of 30.1 lane miles of roadway.

Key Component Challenges

- Ongoing recruitment and retention challenges of skilled personnel.
- Substantial turnover has led to staff being relatively new in their roles, which in turn affects their efficiency. This also necessitates more experienced staff and supervisors to devote time to training.
- Recruitment has been increasingly challenging, evidenced by smaller applicant pools for job openings. The division often repost vacancies multiple times to find candidates who meet the minimum qualifications.
- Increased volume and complexity of utility relocations and Build America, Buy America requirements continues to exceed both the department's and the utility companies' ability to deliver, resulting in delays to construction despite increased coordination and effort.
- Developing financially feasible capital projects in communities off the road system and in areas with limited gravel material availability.
- Federal regulations continue to preclude the timely acquisition of native allotment lands in Bureau of Indian Affairs trust status, which are vital for enhancing rural airports and roads.
- Numerous state-owned roads lack ROW mapping, entailing extensive research to determine ownership. The lack of standardized ROW Engineering measures and management systems continue to impact the quality and efficiency for ROW research necessary for project delivery and ROW permits such as driveway permits, approach road permits, encroachment permits, and utility permits.
- Central Region has over 60 percent of Alaska's serious injury crashes, population, and vehicle miles traveled. It also has the top ten bottlenecks for congestion in the state along two-lane roadways.
- Freight speeds on older roads between ports and cities currently average 25 to 35 miles per hour, earning a national Grade F rating.
- Implementation of AASHTOWare and electronic bidding requires employee training to learn the system and develop proficiency. Simultaneously, there's a crucial need for outreach and education in the consultant and contracting community.
- Maintaining compliance with Environmental Protection Agency and Department of Environmental Conservation stormwater monitoring responsibilities and requirements.
- Administration of contracts using innovative procurement process.
- Compliance with Federal Highway Administration Work Zone Management requirements.

Significant Changes in Results to be Delivered in FY2025

- Central Region consistently achieves year-by-year reductions in fatalities and injuries, even in the face of rising traffic and population growth. To bolster this progress, Central Region has begun full redesign of several highly problematic road segments. This effort aims to reduce pedestrian and other vulnerable user accidents on the state's most heavily traveled roads by at least 20 percent. While these projects are currently in the design phase, the delivery of these projects extends beyond a single year.
- Continue implementation of AASHTOWare Project to gain efficiencies by employing e-Construction technologies.

Statutory and Regulatory Authority

AS 02 Aeronautics

AS 08 Business and Professions

AS 19 Highways and Ferries

AS 29.60, Municipal Government State Programs

AS 30.30, Navigation, Harbors, Shipping, and Transportation Facilities, Abandoned and Derelict Vessels

AS 34 Property

AS 35 Public Buildings, Works

AS 36 Public Contracts

AS 44 State Government

17 AAC 15 Transportation and Public Facilities
USC CFR 14 Aeronautics
USC CFR 15 Environment
USC CFR 16 Environment
USC CFR 23 Highways
USC CFR 33 Environment
USC CFR 41 Contracts
USC CFR 42 Environment/ADA
USC CFR 43 Lands
USC CFR 49 Transportation

Contact Information
<p>Contact: Sean Holland, Regional Director Phone: (907) 269-0770 E-mail: sean.holland@alaska.gov</p>

Central Design, Engineering, and Construction Personal Services Information				
Authorized Positions			Personal Services Costs	
	FY2024 Management Plan	FY2025 Governor		
			Annual Salaries	28,625,616
Full-time	0	278	COLA	1,515,470
Part-time	0	54	Premium Pay	3,454,740
Nonpermanent	0	26	Annual Benefits	19,768,343
			<i>Less 7.00% Vacancy Factor</i>	<i>(3,734,069)</i>
			Lump Sum Premium Pay	0
Totals	0	358	Total Personal Services	49,630,100

Position Classification Summary					
Job Class Title	Anchorage	Fairbanks	Juneau	Others	Total
Accountant 3	2	0	0	0	2
Accountant 4	1	0	0	0	1
Accounting Technician 2	1	0	0	0	1
Accounting Technician 3	2	0	0	0	2
Administrative Assistant 1	4	0	0	0	4
Administrative Assistant 2	1	0	0	0	1
Administrative Assistant 3	2	0	0	0	2
Administrative Officer 1	1	0	0	0	1
College Intern 1	2	0	0	0	2
College Intern 2	3	0	0	0	3
College Intern 3	1	0	0	0	1
Division Director - Px	1	0	0	0	1
Drafting Technician 2	1	0	0	0	1
Drafting Technician 3	3	0	0	0	3
E/T Subjrny 1	14	0	0	3	17
E/T Subjrny 2	15	0	0	3	18
E/T Subjrny 3	8	0	0	2	10
Electrical Engineer	1	0	0	0	1
Eng Tech Jrny	13	0	0	2	15
Engineer/Architect 1	18	0	0	0	18
Engineer/Architect 2	10	0	0	0	10
Engineer/Architect 3	19	0	0	0	19
Engineer/Architect 4	10	0	0	1	11
Engineer/Architect 5	2	0	0	0	2
Engineering Assistant 1	14	0	0	0	14
Engineering Assistant 2	57	0	0	0	57
Engineering Assistant 3	54	0	0	0	54
Engineering Associate	7	0	0	0	7
Engineering Geologist 1	1	0	0	0	1
Engineering Geologist 2	1	0	0	0	1
Engineering Geologist 3	1	0	0	0	1
Env Imp A Mgr 1	1	0	0	0	1
Environmental Impact Analyst 1	2	0	0	0	2
Environmental Impact Analyst 2	3	0	0	0	3
Environmental Impact Analyst 3	6	0	0	1	7
Gis Analyst 1	2	0	0	0	2

Position Classification Summary					
Job Class Title	Anchorage	Fairbanks	Juneau	Others	Total
Gis Analyst 2	1	0	0	0	1
Land Survey Manager 1	2	0	0	0	2
Land Surveyor 1	2	0	0	0	2
Land Surveyor 2	1	0	0	0	1
Mlt Jrny	2	0	0	0	2
Mtlb Foreman	1	0	0	0	1
Mtlb Subjrny 1	2	0	0	0	2
Mtlb Subjrny 2	1	0	0	0	1
Mtlb Subjrny 3	1	0	0	0	1
Mtlb Subjrny 4	1	0	0	0	1
Office Assistant 1	1	0	0	0	1
Office Assistant 2	3	0	0	0	3
OS Dupl Mach Op	2	0	0	0	2
Procurement Specialist 1	1	0	0	0	1
Procurement Specialist 2	3	0	0	0	3
Procurement Specialist 3	2	0	0	0	2
Procurement Specialist 5	1	0	0	0	1
Regional Engineering Geologist	1	0	0	0	1
Right-Of-Way Agent 1	5	0	0	0	5
Right-Of-Way Agent 2	5	0	0	0	5
Right-Of-Way Agent 3	8	0	0	0	8
Right-Of-Way Agent 4	3	0	0	0	3
Right-Of-Way Assistant	1	0	0	0	1
Survey Lead	3	0	0	0	3
Survey, Journey	3	0	0	0	3
Survey, Sub-Journey 2	1	0	0	0	1
Tech Eng/Arch 1	5	0	0	0	5
Totals	346	0	0	12	358

Component Detail All Funds
Department of Transportation and Public Facilities

Component: Central Design, Engineering, and Construction (3432)
RDU: Design, Engineering and Construction (526)

Non-Formula Component

	FY2023 Actuals	FY2024 Enrolled	FY2024 Authorized	FY2024 Management Plan	FY2025 Governor Adjusted Base	FY2025 Governor	FY2024 Management Plan vs FY2025 Governor		
1000 Personal Services	0.0	0.0	0.0	0.0	49,630.1	49,630.1	49,630.1	100.0%	
2000 Travel	0.0	0.0	0.0	0.0	47.0	47.0	47.0	100.0%	
3000 Services	0.0	0.0	0.0	0.0	2,479.2	2,479.2	2,479.2	100.0%	
4000 Commodities	0.0	0.0	0.0	0.0	365.9	365.9	365.9	100.0%	
5000 Capital Outlay	0.0	0.0	0.0	0.0	70.0	70.0	70.0	100.0%	
7000 Grants, Benefits	0.0	0.0	0.0	0.0	0.0	0.0	0.0	0.0%	
8000 Miscellaneous	0.0	0.0	0.0	0.0	0.0	0.0	0.0	0.0%	
Totals	0.0	0.0	0.0	0.0	52,592.2	52,592.2	52,592.2	100.0%	
Fund Sources:									
1004 Gen Fund (UGF)	0.0	0.0	0.0	0.0	194.6	194.6	194.6	100.0%	
1005 GF/Prgm (DGF)	0.0	0.0	0.0	0.0	635.6	635.6	635.6	100.0%	
1007 I/A Rcpts (Other)	0.0	0.0	0.0	0.0	55.6	55.6	55.6	100.0%	
1061 CIP Rcpts (Other)	0.0	0.0	0.0	0.0	51,706.4	51,706.4	51,706.4	100.0%	
Unrestricted General (UGF)	0.0	0.0	0.0	0.0	194.6	194.6	194.6	100.0%	
Designated General (DGF)	0.0	0.0	0.0	0.0	635.6	635.6	635.6	100.0%	
Other Funds	0.0	0.0	0.0	0.0	51,762.0	51,762.0	51,762.0	100.0%	
Federal Funds	0.0	0.0	0.0	0.0	0.0	0.0	0.0	0.0%	
Positions:									
Permanent Full Time	0	0	0	0	278	278	278	100.0%	
Permanent Part Time	0	0	0	0	54	54	54	100.0%	
Non Permanent	0	0	0	0	26	26	26	100.0%	

Change Record Detail - Multiple Scenarios with Descriptions
Department of Transportation and Public Facilities

Component: Central Design, Engineering, and Construction (3432)

RDU: Design, Engineering and Construction (526)

Scenario/Change Record Title	Trans Type	Totals	Personal Services	Travel	Services	Commodities	Capital Outlay	Grants, Benefits	Miscellaneous	Positions		NP
										PFT	PPT	
	Subtotal	0.0	0.0	0.0	0.0	0.0	0.0	0.0	0.0	0	0	0
***** Changes From FY2024 Management Plan To FY2025 Governor Adjusted Base *****												
Combine Central Region Construction and CIP Support Component for Better Alignment												
	Trin	25,415.8	23,722.2	25.0	1,397.6	206.0	65.0	0.0	0.0	112	41	19
1004 Gen Fund		98.7										
1007 I/A Rcpts		55.6										
1061 CIP Rcpts		25,261.5										
Combine the Central Region Construction and Capital Improvement Project (CIP) Support component and the Central Design and Engineering Services component into the new Central Design, Engineering, and Construction component. The structure combines staff and resources from both Design & Construction into a single team, therefore making component and budget distinctions obsolete. The region benefits from having positions and support budgets combined to a single regional component, streamlining budget and fiscal processes to maximize administrative and operational efficiencies.												
Combine Central Design and Engineering Services Component for Better Alignment												
	Trin	27,276.4	26,007.9	22.0	1,081.6	159.9	5.0	0.0	0.0	167	13	7
1004 Gen Fund		95.9										
1005 GF/Prgm		635.6										
1061 CIP Rcpts		26,544.9										
Combine the Central Region Construction and Capital Improvement Project (CIP) Support component and the Central Design and Engineering Services component into the new Central Design, Engineering, and Construction component. The structure combines staff and resources from both Design & Construction into a single team, therefore making component and budget distinctions obsolete. The region benefits from having positions and support budgets combined to a single regional component, streamlining budget and fiscal processes to maximize administrative and operational efficiencies.												
Transfer Right-of-Way Assistant (25-0492) to Central Region Support Services for Recruitment Support												
	Trout	-100.0	-100.0	0.0	0.0	0.0	0.0	0.0	0.0	-1	0	0
1061 CIP Rcpts		-100.0										

Transfer full-time Right-of-Way Assistant (25-0492), range 12, located in Anchorage, to Central Region Support Services and reclass as full-time Administrative Assistant 3, range 15, located in Anchorage.

Central Region divisions are grappling with persistent challenges related to high staff turnover and the recruitment of qualified personnel throughout the region. As the number of vacancies continues to rise, a temporary reassignment of duties has been undertaken among the region's management and administrative staff in an attempt to manage the increasing workload.

This position is poised to play a pivotal role in addressing these staffing concerns by serving as the primary point of contact for recruitment activities within Central Region components. This position will assume a critical role in delivering comprehensive recruitment services, encompassing tasks such as job postings, facilitation of hiring approvals, and managing correspondence related to recruitment processes. It is expected to streamline operations, reduce delays, mitigate potential confusion, and enhance communication between the region and the Department of Transportation and Public Facilities recruitment team, thereby serving as a valuable liaison between the division and Division of Personnel's Recruitment Services.

Change Record Detail - Multiple Scenarios with Descriptions
Department of Transportation and Public Facilities

Component: Central Design, Engineering, and Construction (3432)

RDU: Design, Engineering and Construction (526)

Scenario/Change Record Title	Trans Type	Totals	Personal Services	Travel	Services	Commodities	Capital Outlay	Grants, Benefits	Miscellaneous	Positions		NP
										PFT	PPT	
	Subtotal	52,592.2	49,630.1	47.0	2,479.2	365.9	70.0	0.0	0.0	278	54	26
***** Changes From FY2025 Governor Adjusted Base To FY2025 Governor *****												
	Totals	52,592.2	49,630.1	47.0	2,479.2	365.9	70.0	0.0	0.0	278	54	26

Line Item Detail (1676)
Department of Transportation and Public Facilities
Travel

Component: Central Design, Engineering, and Construction (3432)

Line Number	Line Name		FY2023 Actuals	FY2024 Management Plan	FY2025 Governor
2000	Travel		0.0	0.0	47.0
Object Class	Servicing Agency	Explanation	FY2023 Actuals	FY2024 Management Plan	FY2025 Governor
2000 Travel Detail Totals			0.0	0.0	47.0
2000	In-State Employee Travel	The Preconstruction Engineer, section chiefs, and functional managers of Preliminary Design and Environmental, Highway and Aviation Design, Materials, Utilities, Traffic, Right-of-Way travel for administration and coordination of projects, field reviews, permit inspections, surveys, staff meetings, hearings, training and conferences. This includes lodging, meals, and incidentals in association with the above travel.	0.0	0.0	18.7
2002	Out of State Employee Travel	Out of state travel and per diem for division/section chiefs or other employees. Travel is usually for administrative, conventions, meetings, and training not available in-state.	0.0	0.0	28.3

Line Item Detail (1676)
Department of Transportation and Public Facilities
Services

Component: Central Design, Engineering, and Construction (3432)

Line Number	Line Name		FY2023 Actuals	FY2024 Management Plan	FY2025 Governor
3000	Services		0.0	0.0	2,479.2
Object Class	Servicing Agency	Explanation	FY2023 Actuals	FY2024 Management Plan	FY2025 Governor
3000 Services Detail Totals			0.0	0.0	2,479.2
3000	Education Services	Training services and/or conference fees, membership fees, and employee tuition (excluding Information Technology).	0.0	0.0	45.0
3001	Financial Services	Credit card processing fees for permits paid for by credit card: driveway permits, encroachment permits, lane closure permits, property management permits for use of rights-of way, etc.	0.0	0.0	5.0
3003	Information Technology	Information technology (IT) training, IT consulting, IT equipment leases, software licensing, and software maintenance.	0.0	0.0	101.7
3004	Telecommunications	Long distance, local phone service, data communication, and cellular service provided by vendors.	0.0	0.0	90.0
3005	Health Services	Audiometric Tests CR Materials Lab.	0.0	0.0	0.0
3006	Delivery Services	Postage, courier and freight expense.	0.0	0.0	35.0
3007	Advertising and Promotions	Advertising and public relations activities for the Michael Baker International Inc. construction zone public information advisory services.	0.0	0.0	375.0
3007	Advertising and Promotions	Advertising and legal notices for non-project specific publications.	0.0	0.0	2.9
3008	Utilities	Utilities for Construction field offices.	0.0	0.0	75.0

Line Item Detail (1676)
Department of Transportation and Public Facilities
Services

Component: Central Design, Engineering, and Construction (3432)

Object Class	Servicing Agency	Explanation	FY2023 Actuals	FY2024 Management Plan	FY2025 Governor
3000 Services Detail Totals			0.0	0.0	2,479.2
3009	Structure/Infrastructure/Land	Expenses for snow removal, janitorial, lawn care, and other services for property managed by the Right-of-Way section.	0.0	0.0	25.0
3010	Equipment/Machinery	Maintenance agreements for four fax machines; five Sharp copiers in: Preliminary and Engineering Design Services; Aviation and Highway Design; Right-of-Way, Traffic and Utilities; and repairs to survey and materials testing equipment.	0.0	0.0	175.0
3011	Other Services	Copier click fees for excess copies.	0.0	0.0	20.0
3011	Other Services	Consent Decree with the Environmental Protection Agency effective September 21, 2010, regarding stormwater inspection, reporting, compliance and enforcement. Funding is for costs not directly billable to projects such as meeting coordination, updates, and annual reporting.	0.0	0.0	40.0
3017	Inter-Agency Information Technology Non-Telecommunications	Admin - Department-wide Office of Information Technology (OIT) Core Services	0.0	0.0	899.2
3018	Inter-Agency Information Technology Telecommunications	Admin - Department-wide Telecommunication services provided by the Department of Administration such as basic telephone services, equipment and features, dedicated voice/data line service, statewide paging, two-way radio, and video conference.	0.0	0.0	80.6
3021	Inter-Agency Mail	Admin - Department-wide Centralized mail services chargeback	0.0	0.0	1.4
3022	Inter-Agency Human Resources	Admin - Department-wide Centralized human resource chargeback	0.0	0.0	203.6

Line Item Detail (1676)
Department of Transportation and Public Facilities
Services

Component: Central Design, Engineering, and Construction (3432)

Object Class		Servicing Agency	Explanation	FY2023 Actuals	FY2024 Management Plan	FY2025 Governor
3000 Services Detail Totals				0.0	0.0	2,479.2
3024	Inter-Agency Legal	Law - Department-wide	Legal services provided by the Department of Law.	0.0	0.0	50.0
3026	Inter-Agency Insurance	Admin - Department-wide	Risk Management expense for Property/Casualty Insurance for Right of Way Properties.	0.0	0.0	19.0
3027	Inter-Agency Financial	Admin - Department-wide	Chargeback fee for HRM/IRIS/ALDER.	0.0	0.0	118.6
3027	Inter-Agency Financial	Admin - Department-wide	Shared Services of Alaska accounts payable and travel and expense activities.	0.0	0.0	3.7
3028	Inter-Agency Americans with Disabilities Act Compliance	Admin - Department-wide	Americans with Disabilities Act (ADA) Chargeback	0.0	0.0	1.8
3029	Inter-Agency Education/Training		Procurement training provided by Shared Services of Alaska.	0.0	0.0	0.5
3035	Inter-Agency Other Equipment/Machinery	Trans - Measurement Standards (2332)	Weight calibrations for Central Region Materials Lab.	0.0	0.0	1.4
3036	Inter-Agency Safety	Trans - International Airport Systems (1649)	Badge fees for Ted Stevens Anchorage International Airport.	0.0	0.0	3.5
3037	State Equipment Fleet	Trans - State Equipment Fleet (2791)	State Equipment Fleet operating and replacement fees, credit card fuel, vehicle maintenance, and repairs.	0.0	0.0	48.3
3038	Inter-Agency Management/Consulting	Trans - Central Design & Eng Svcs (2298)	Construction staff support to the Utilities and Right-of-Way sections for traffic control plan review not funded by a construction project and field inspections for right-of-way permits.	0.0	0.0	38.0
3039	DOT/PF Time & Equipment System		Vehicle usage billed to the operating budget based on established rates and actual usage of vehicles.	0.0	0.0	20.0

Line Item Detail (1676)
Department of Transportation and Public Facilities
Commodities

Component: Central Design, Engineering, and Construction (3432)

Line Number	Line Name		FY2023 Actuals	FY2024 Management Plan	FY2025 Governor
4000	Commodities		0.0	0.0	365.9
Object Class	Servicing Agency	Explanation	FY2023 Actuals	FY2024 Management Plan	FY2025 Governor
4000 Commodities Detail Totals			0.0	0.0	365.9
4000	Business	Consumable office supplies, subscriptions, furniture and small tools with a value of less than \$5,000 per item used in daily operations.	0.0	0.0	240.0
4000	Business	Computers, printers and small printers. The component is on a four-year computer replacement schedule for a permanent full-time staff of 172. Computers for administrative staff are approximately \$1.5 each, and \$2.0 for engineering staff.	0.0	0.0	125.9
4002	Household/Institutional	Gloves and rubber boots for the CR Materials Lab	0.0	0.0	0.0
4003	Scientific and Medical	Laboratory and non-laboratory supply expenditures charged to the Central Region Materials Lab Cost Allocation Plan.	0.0	0.0	0.0
4004	Safety	Safety Supplies for Central Region Materials Lab and Survey Section	0.0	0.0	0.0
4013	Lube Oils/Grease/Solvents	Lube Oils/Grease/Solvents.	0.0	0.0	0.0
4015	Parts and Supplies	Parts and Supplies for the Central Region Materials and Survey Instrument Labs Cost Allocation Plans.	0.0	0.0	0.0
4019	Small Tools/Minor Equipment	Repair and maintenance supplies include small tools, equipment fuel, paint, survey markers, and parts	0.0	0.0	0.0

Line Item Detail (1676)
Department of Transportation and Public Facilities
Commodities

Component: Central Design, Engineering, and Construction (3432)

Object Class	Servicing Agency	Explanation	FY2023 Actuals	FY2024 Management Plan	FY2025 Governor
4000 Commodities Detail Totals			0.0	0.0	365.9
used by materials, geology and survey crews.					

Line Item Detail (1676)
Department of Transportation and Public Facilities
Capital Outlay

Component: Central Design, Engineering, and Construction (3432)

Line Number	Line Name		FY2023 Actuals	FY2024 Management Plan	FY2025 Governor
5000	Capital Outlay		0.0	0.0	70.0
Object Class	Servicing Agency	Explanation	FY2023 Actuals	FY2024 Management Plan	FY2025 Governor
5000 Capital Outlay Detail Totals			0.0	0.0	70.0
5003	Capital Lease Payments	Capital lease/purchase payments for the copiers in the Graphics Section.	0.0	0.0	60.0
5004	Equipment	Central Region allocated portion of equipment and capital upgrades to the Aviation Building network.	0.0	0.0	10.0

Revenue Detail (1681)
Department of Transportation and Public Facilities

Component: Central Design, Engineering, and Construction (3432)

Revenue Type (OMB Fund Code) Revenue Source	Component	Comment	FY2023 Actuals	FY2024 Management Plan	FY2025 Governor
5005 GF/Prgm (1005 GF/Prgm)			0.0	0.0	635.6
5111 Program Receipts Transportation - Charges for Services		Receipts from issuing utility permits in the state's right-of-way and for inspection of utility installations. Receipts for the sale and lease of excess right-of-way and permits for encroachments in the state right-of-way. Receipts include charges assessed to the owners of illegally place signs within the State's right-of-way. These signs are removed and stored. When they are identified, they are returned to the owner after the owner has paid the established fee. Includes receipts collected from the Tourist Oriented Destination Signs (TODS) Program, per AS 19.05.070-100 application fee collected to process request for permit for encroachments in the right-of-way of a highway, per CH61, SLA 05 (HB279).	0.0	0.0	381.9
5113 Program Receipts Natural Resources - Rent and Royalties		Right-of-way revenue receipts to be used for Title 23 eligible activities per the Right-of Way Manual section 2.9.7 Revenue Receipt Coding.	0.0	0.0	253.7
5007 I/A Rcpts (1007 I/A Rcpts)			0.0	0.0	55.6
5301 Inter-Agency Receipts	Trans - Central Highways and Aviation (564)	Reimbursable service agreement with Central Highways and Aviation for technical assistance including environmental reviews and permit processing, hydrological inspections, evaluations,	0.0	0.0	55.6

Revenue Detail (1681)
Department of Transportation and Public Facilities

Component: Central Design, Engineering, and Construction (3432)

Revenue Type (OMB Fund Code) Revenue Source	Component	Comment	FY2023 Actuals	FY2024 Management Plan	FY2025 Governor
		recommendations, material testing, signing plans and drafting support, and electrical engineering support.			
5061 CIP Rcpts (1061 CIP Rcpts)			0.0	0.0	51,706.4
5351 Capital Improvement Project Inter-Agency		Capital improvement project receipts for work in direct support of capital projects.	0.0	0.0	41,720.7
5351 Capital Improvement Project Inter-Agency		Recovery of indirect costs from the capital budget via the department's Indirect Cost Allocation Plan (ICAP).	0.0	0.0	9,985.7

Inter-Agency Services (1682)
Department of Transportation and Public Facilities

Component: Central Design, Engineering, and Construction (3432)

	FY2023 Actuals	FY2024 Management Plan	FY2025 Governor
Component Totals	0.0	0.0	1,469.1
With Department of Administration	0.0	0.0	1,327.9
With Department of Law	0.0	0.0	50.0
With Department of Transportation and Public Facilities	0.0	0.0	91.2

Object Class	Servicing Agency	Explanation	FY2023 Actuals	FY2024 Management Plan	FY2025 Governor
3017 Inter-Agency Information Technology Non-Telecommunications	Admin - Department-wide	Office of Information Technology (OIT) Core Services	0.0	0.0	899.2
3018 Inter-Agency Information Technology Telecommunications	Admin - Department-wide	Telecommunication services provided by the Department of Administration such as basic telephone services, equipment and features, dedicated voice/data line service, statewide paging, two-way radio, and video conference.	0.0	0.0	80.6
3021 Inter-Agency Mail	Admin - Department-wide	Centralized mail services chargeback	0.0	0.0	1.4
3022 Inter-Agency Human Resources	Admin - Department-wide	Centralized human resource chargeback	0.0	0.0	203.6
3024 Inter-Agency Legal	Law - Department-wide	Legal services provided by the Department of Law.	0.0	0.0	50.0
3026 Inter-Agency Insurance	Admin - Department-wide	Risk Management expense for Property/Casualty Insurance for Right of Way Properties.	0.0	0.0	19.0
3027 Inter-Agency Financial	Admin - Department-wide	Chargeback fee for HRM/IRIS/ALDER.	0.0	0.0	118.6
3027 Inter-Agency Financial	Admin - Department-wide	Shared Services of Alaska accounts payable and travel and expense activities.	0.0	0.0	3.7
3028 Inter-Agency Americans with Disabilities Act Compliance	Admin - Department-wide	Americans with Disabilities Act (ADA) Chargeback	0.0	0.0	1.8
3035 Inter-Agency Other	Trans - Measurement Standards	Weight calibrations for Central	0.0	0.0	1.4

Inter-Agency Services (1682)
Department of Transportation and Public Facilities

Component: Central Design, Engineering, and Construction (3432)

Object Class	Servicing Agency	Explanation	FY2023 Actuals	FY2024 Management Plan	FY2025 Governor
Equipment/Machinery	(2332)	Region Materials Lab.			
3036 Inter-Agency Safety	Trans - International Airport Systems (1649)	Badge fees for Ted Stevens Anchorage International Airport.	0.0	0.0	3.5
3037 State Equipment Fleet	Trans - State Equipment Fleet (2791)	State Equipment Fleet operating and replacement fees, credit card fuel, vehicle maintenance, and repairs.	0.0	0.0	48.3
3038 Inter-Agency Management/Consulting	Trans - Central Design & Eng Svcs (2298)	Construction staff support to the Utilities and Right-of-Way sections for traffic control plan review not funded by a construction project and field inspections for right-of-way permits.	0.0	0.0	38.0

Personal Services Expenditure Detail
Department of Transportation and Public Facilities

Scenario: FY2025 Governor (20959)
Component: Central Design, Engineering, and Construction (3432)
RDU: Design, Engineering and Construction (526)

PCN	Job Class Title	Time Status	Retire Code	Barg Unit	Location	Salary Sched	Range / Step	Comp Months	Split / Count	Annual Salaries	COLA	Premium Pay	Annual Benefits	Total Costs	UGF Amount
25-0175	Administrative Officer 1	FT	A	GP	Anchorage	200	17B	12.0		61,347	4,379	0	45,309	111,035	0
25-0192	Engineer/Architect 3	FT	A	SS	Anchorage	200	25L	12.0		140,462	0	0	83,128	223,590	0
25-0224	Engineer/Architect 3	FT	A	SS	Anchorage	200	25K	12.0		136,032	0	0	81,233	217,265	0
25-0236	Engineering Assistant 3	FT	A	GP	Anchorage	200	21F	12.0		92,157	6,579	0	58,486	157,222	0
25-0241	Engineering Assistant 3	FT	A	GP	Anchorage	200	21E / F	12.0		90,816	6,483	0	57,913	155,212	0
25-0242	Administrative Assistant 3	FT	A	GP	Anchorage	200	15N	12.0		75,231	5,370	0	51,247	131,848	0
25-0249	Engineer/Architect 1	FT	A	GP	Anchorage	200	22C / D	12.0		91,648	6,542	0	58,268	156,458	0
25-0373	Division Director - Px	FT	A	XE	Anchorage	N00	27W / X	12.0		203,702	0	0	107,825	311,527	105,268
25-0375	Engineer/Architect 4	FT	A	SS	Anchorage	200	26U	12.0		194,002	0	0	104,415	298,417	0
25-0376	Engineer/Architect 4	FT	A	SS	Anchorage	200	26R	12.0		179,730	0	0	99,186	278,916	0
25-0378	Engineer/Architect 4	FT	A	SS	Anchorage	200	26J / K	12.0		137,523	0	0	81,871	219,394	0
25-0379	Procurement Specialist 2	FT	A	SS	Anchorage	200	16B / C	12.0		61,477	0	0	49,346	110,823	0
25-0382	Engineer/Architect 5	FT	A	SS	Anchorage	200	27N / O	12.0		161,866	0	0	92,283	254,149	103,953
25-0387	Engineer/Architect 4	FT	A	SS	Anchorage	200	26J	12.0		136,490	0	0	81,429	217,919	0
25-0389	Engineer/Architect 4	FT	A	SS	Anchorage	200	26P	12.0		165,339	0	0	93,768	259,107	0
25-0391	Engineer/Architect 4	FT	A	SS	Anchorage	200	26Q	12.0		170,706	0	0	95,879	266,585	0
25-0394	Procurement Specialist 2	FT	A	GP	Anchorage	200	16B / C	12.0		58,081	4,146	0	43,912	106,139	0
25-0395	Procurement Specialist 3	FT	A	GP	Anchorage	200	18E / F	12.0		74,991	5,353	0	51,144	131,488	0
25-0398	Accountant 4	FT	A	SS	Anchorage	200	20F / J	12.0		90,915	0	0	61,937	152,852	0
25-0401	Administrative Assistant 1	FT	A	GP	Anchorage	200	12P	12.0		65,193	4,654	0	46,954	116,801	0
25-0402	Engineer/Architect 2	FT	A	SS	Anchorage	200	23J / K	12.0		116,305	0	0	72,796	189,101	0
25-0403	Engineering Assistant 1	FT	A	GP	Anchorage	200	17B / C	12.0		62,346	5,781	18,640	53,708	140,475	0
25-0404	Engineer/Architect 3	FT	A	SS	Anchorage	200	25J	12.0		131,747	0	0	79,401	211,148	0
25-0405	Engineer/Architect 3	FT	A	SS	Anchorage	200	25M	12.0		145,018	0	0	85,077	230,095	0
25-0407	Engineering Assistant 3	FT	A	GP	Anchorage	200	21C	12.0		83,187	5,938	0	54,650	143,775	0
25-0408	Engineer/Architect 5	FT	A	SS	Anchorage	200	27U / V	12.0		202,771	0	0	107,628	310,399	0
25-0411	Accounting Technician 2	FT	A	GP	Anchorage	200	14E / F	12.0		56,496	4,033	0	43,234	103,763	0
25-0413	Engineer/Architect 1	FT	A	GP	Anchorage	200	22M	12.0		116,981	8,351	0	69,103	194,435	0
25-0414	Engineer/Architect 4	FT	A	SS	Anchorage	200	26S	12.0		181,979	0	0	100,010	281,989	0
25-0415	Engineer/Architect 3	FT	A	SS	Anchorage	200	25K / L	12.0		138,543	0	0	82,307	220,850	0
25-0416	Engineer/Architect 3	FT	A	SS	Anchorage	200	25F / J	12.0		128,263	0	0	71,911	206,174	0
25-0418	Procurement Specialist 1	FT	A	GP	Anchorage	200	14A	12.0		48,068	3,431	0	39,629	91,128	0
25-0421	Right-Of-Way Agent 3	FT	A	GP	Anchorage	200	18K	12.0		83,714	5,976	0	54,875	144,565	0
25-0423	Land Survey Manager 1	FT	A	SS	Anchorage	200	23R	12.0		148,179	0	0	86,429	234,608	0
25-0424	Land Surveyor 2	FT	A	GP	Anchorage	200	22J / K	12.0		109,094	7,788	0	65,730	182,612	0
25-0427	Right-Of-Way Agent 1	FT	A	GP	Anchorage	200	14C	12.0		51,383	3,668	0	41,047	96,098	0
25-0429	Engineer/Architect 2	FT	A	SS	Anchorage	200	23C	12.0		100,110	0	0	65,870	165,980	0
25-0430	Tech Eng/Arch 1	FT	A	GP	Anchorage	200	24G	12.0		117,312	8,374	0	69,245	194,931	0

Note: If a position is split, an asterisk (*) will appear in the Split/Count column. If the split position is also counted in the component, two asterisks (**) will appear in this column. [No valid job title] appearing in the Job Class Title indicates that the PCN has an invalid class code or invalid range for the class code effective date of this scenario.

Personal Services Expenditure Detail
Department of Transportation and Public Facilities

Scenario: FY2025 Governor (20959)
Component: Central Design, Engineering, and Construction (3432)
RDU: Design, Engineering and Construction (526)

PCN	Job Class Title	Time Status	Retire Code	Barg Unit	Location	Salary Sched	Range / Step	Comp Months	Split / Count	Annual Salaries	COLA	Premium Pay	Annual Benefits	Total Costs	UGF Amount
25-0433	Right-Of-Way Agent 3	FT	A	GP	Anchorage	200	18K / L	12.0		84,715	6,047	0	55,303	146,065	0
25-0434	Accounting Technician 3	FT	A	GP	Anchorage	200	16K / L	12.0		74,432	5,313	0	50,905	130,650	0
25-0435	Engineer/Architect 4	FT	A	SS	Anchorage	200	26R / S	12.0		178,786	0	0	98,840	277,626	0
25-0440	Engineer/Architect 3	FT	A	SS	Anchorage	200	25L / M	12.0		141,791	0	0	83,697	225,488	0
25-0441	Administrative Assistant 1	FT	A	GP	Anchorage	200	12D / E	12.0		46,471	3,317	0	38,946	88,734	0
25-0446	Engineering Assistant 3	FT	A	GP	Anchorage	200	21N / O	12.0		113,055	10,516	34,258	82,076	239,905	0
25-0447	Accounting Technician 3	FT	A	GP	Anchorage	200	16G	12.0		68,114	6,340	20,696	57,055	152,205	0
25-0452	Office Assistant 2	FT	A	GP	Anchorage	200	10G	12.0		45,045	3,216	0	38,336	86,597	0
25-0455	Tech Eng/Arch 1	FT	A	GP	Anchorage	200	24K / L	12.0		126,506	9,031	0	73,177	208,714	0
25-0461	Office Assistant 2	FT	A	GP	Anchorage	200	10B / C	12.0		39,435	2,815	0	35,937	78,187	0
25-0465	Engineering Assistant 3	FT	A	GP	Anchorage	200	21F / G	12.0		93,611	8,681	28,001	71,084	201,377	0
25-0468	Office Assistant 1	FT	A	GP	Anchorage	200	8B / C	12.0		34,771	2,482	0	33,942	71,195	0
25-0473	Right-Of-Way Agent 4	FT	A	SS	Anchorage	200	20J / K	12.0		94,252	0	0	63,364	157,616	0
25-0474	Right-Of-Way Agent 4	FT	A	SS	Anchorage	200	20M	12.0		103,168	0	0	67,178	170,346	0
25-0475	Engineering Assistant 1	FT	A	GP	Anchorage	200	17B / C	12.0		62,761	4,480	0	45,914	113,155	0
25-0476	Right-Of-Way Agent 3	FT	A	GP	Anchorage	200	18G / J	12.0		80,143	5,721	0	53,348	139,212	0
25-0477	Right-Of-Way Agent 3	FT	A	GP	Anchorage	200	18C / D	12.0		69,942	4,993	0	48,985	123,920	0
25-0479	Engineering Assistant 1	FT	A	GP	Anchorage	200	17C	12.0		63,609	4,541	0	46,276	114,426	0
25-0480	Right-Of-Way Agent 3	FT	A	GP	Anchorage	200	18G	12.0		77,864	5,558	0	52,373	135,795	0
25-0482	Right-Of-Way Agent 1	FT	A	GP	Anchorage	200	14C	12.0		51,383	3,668	0	41,047	96,098	0
25-0485	Right-Of-Way Agent 1	FT	A	GP	Anchorage	200	14C	12.0		51,383	3,668	0	41,047	96,098	0
25-0486	Right-Of-Way Agent 3	FT	A	GP	Anchorage	200	18B / C	12.0		66,002	4,712	0	47,300	118,014	0
25-0487	Gis Analyst 1	FT	A	GP	Anchorage	200	15C / D	12.0		55,377	3,953	0	42,755	102,085	0
25-0488	Drafting Technician 3	FT	A	GP	Anchorage	200	15J / K	12.0		68,169	4,866	0	48,227	121,262	0
25-0494	Administrative Assistant 3	FT	A	GP	Anchorage	200	15P	12.0		80,595	5,753	0	53,541	139,889	0
25-0495	Office Assistant 2	FT	A	GP	Anchorage	200	10B / C	12.0		39,174	2,796	0	35,825	77,795	0
25-0496	Right-Of-Way Assistant	FT	A	GP	Anchorage	200	12F / G	12.0		51,033	3,643	0	40,897	95,573	0
25-0497	Administrative Assistant 1	FT	A	GP	Anchorage	200	12E / F	12.0		49,637	3,543	0	40,300	93,480	0
25-0499	Right-Of-Way Agent 2	FT	A	GP	Anchorage	200	16C	12.0		59,105	4,219	0	44,350	107,674	0
25-0501	Engineering Assistant 1	FT	A	GP	Anchorage	200	17C	12.0		63,609	4,541	0	46,276	114,426	0
25-0502	Engineer/Architect 3	FT	A	SS	Anchorage	200	25R	12.0		170,186	0	0	95,689	265,875	0
25-0504	Tech Eng/Arch 1	FT	A	GP	Anchorage	200	24C	12.0		102,044	7,284	0	62,715	172,043	0
25-0506	Engineering Associate	FT	A	GP	Anchorage	200	21P	12.0		120,756	11,241	36,719	86,423	255,139	0
25-0507	Engineering Assistant 3	FT	A	GP	Anchorage	200	21K	12.0		102,434	8,201	12,449	68,206	191,290	0
25-0508	Engineering Assistant 3	FT	A	GP	Anchorage	200	21J / K	12.0		101,334	9,386	30,146	75,305	216,171	0
25-0509	Engineering Associate	FT	A	GP	Anchorage	200	21O / P	12.0		118,086	10,969	35,570	84,789	249,414	0
25-0510	Engineering Assistant 3	FT	A	GP	Anchorage	200	21L / M	12.0		107,484	9,967	32,137	78,787	228,375	0
25-0512	Engineering Assistant 3	FT	A	GP	Anchorage	200	21M / N	12.0		109,644	10,195	33,180	80,156	233,175	0

Note: If a position is split, an asterisk (*) will appear in the Split/Count column. If the split position is also counted in the component, two asterisks (**) will appear in this column. [No valid job title] appearing in the Job Class Title indicates that the PCN has an invalid class code or invalid range for the class code effective date of this scenario.

Personal Services Expenditure Detail
Department of Transportation and Public Facilities

Scenario: FY2025 Governor (20959)
Component: Central Design, Engineering, and Construction (3432)
RDU: Design, Engineering and Construction (526)

PCN	Job Class Title	Time Status	Retire Code	Barg Unit	Location	Salary Sched	Range / Step	Comp Months	Split / Count	Annual Salaries	COLA	Premium Pay	Annual Benefits	Total Costs	UGF Amount
25-0513	Engineering Assistant 2	FT	A	GP	Anchorage	200	19E / F	12.0		79,416	7,358	23,658	63,155	173,587	0
25-0514	Engineering Associate	FT	A	GP	Anchorage	200	21O	12.0		116,415	10,835	35,372	83,990	246,612	0
25-0515	Engineering Assistant 3	FT	A	GG	Anchorage	200	21Q	12.0		125,325	8,946	0	72,672	206,943	0
25-0516	Engineering Assistant 3	FT	A	GP	Anchorage	200	21M / N	12.0		110,235	10,238	33,180	80,409	234,062	0
25-0517	Engineering Assistant 2	FT	A	GP	Anchorage	200	19B / C	12.0		70,763	6,580	21,412	58,494	157,249	0
25-0518	Engineering Associate	FT	A	GP	Anchorage	200	21N	12.0		112,749	10,494	34,258	81,946	239,447	0
25-0519	Engineering Assistant 2	FT	A	GP	Anchorage	200	19C / D	12.0		73,444	6,822	22,118	59,943	162,327	0
25-0520	Engineering Assistant 2	FT	A	GP	Anchorage	200	19B / C	12.0		70,763	6,580	21,412	58,494	157,249	0
25-0521	Engineering Assistant 3	FT	A	GP	Anchorage	200	21L / M	12.0		108,342	10,028	32,137	79,154	229,661	0
25-0522	Engineering Assistant 2	FT	A	GP	Anchorage	200	19C / D	12.0		74,117	6,870	22,118	60,230	163,335	0
25-0523	Engineering Assistant 2	FT	A	GP	Anchorage	200	19F / G	12.0		82,061	7,609	24,529	64,659	178,858	0
25-0524	Engineering Assistant 2	FT	A	GP	Anchorage	200	19C / D	12.0		73,018	6,791	22,118	59,760	161,687	0
25-0525	Engineering Assistant 2	FT	A	GP	Anchorage	200	19B / C	12.0		70,763	6,580	21,412	58,494	157,249	0
25-0526	Engineering Assistant 2	FT	A	GP	Anchorage	200	19L / M	12.0		92,727	8,622	28,060	70,731	200,140	0
25-0527	Engineering Assistant 2	FT	A	GP	Anchorage	200	19D / E	12.0		76,040	7,065	22,935	61,402	167,442	0
25-0528	Engineering Assistant 2	FT	A	GP	Anchorage	200	19O / P	12.0		103,417	9,601	31,076	76,593	220,687	0
25-0531	Engineering Assistant 2	FT	A	GP	Anchorage	200	19B / C	12.0		72,233	5,156	0	49,965	127,354	0
25-0532	Engineering Assistant 2	FT	A	GP	Anchorage	200	19K / L	12.0		91,868	8,498	27,177	69,986	197,529	0
25-0533	Engineering Assistant 2	FT	A	GP	Anchorage	200	19K	12.0		89,447	8,325	27,177	68,951	193,900	0
25-0534	Engineering Assistant 2	FT	A	GP	Anchorage	200	19E / F	12.0		78,222	7,273	23,658	62,645	171,798	0
25-0535	Engineering Assistant 2	FT	A	GP	Anchorage	200	19N	12.0		98,456	9,164	29,915	73,975	211,510	0
25-0536	Engineering Assistant 2	FT	A	GP	Anchorage	200	19N / O	12.0		99,388	9,230	29,915	74,374	212,907	0
25-0539	Eng Tech Jrny	PT	A	LL	Anchorage	2AA	54E	9.0		42,299	0	16,068	39,418	97,785	0
25-0540	Eng Tech Jrny	PT	A	LL	Wasilla	2BB	54M / N	9.0		51,983	0	19,546	45,047	116,576	0
25-0541	Engineering Assistant 3	FT	A	GP	Anchorage	200	21N	12.0		112,749	8,049	0	67,293	188,091	0
25-0542	Eng Tech Jrny	PT	A	LL	Anchorage	2AA	54K	9.0		47,119	0	17,899	42,263	107,281	0
25-0547	E/T Subjrny 2	PT	A	LL	Anchorage	2AA	57A / B	6.0		21,444	0	11,873	23,886	57,203	0
25-0548	E/T Subjrny 2	PT	A	LL	Anchorage	2AA	57A	7.5		26,047	0	11,873	28,264	66,184	0
25-0552	Eng Tech Jrny	PT	A	LL	Anchorage	2AA	54O	9.0		54,605	0	20,743	46,681	122,029	0
25-0553	Eng Tech Jrny	PT	A	LL	Anchorage	2AA	54F	9.0		43,781	0	16,631	40,293	100,705	0
25-0554	Eng Tech Jrny	PT	A	LL	Anchorage	2AA	54C / D	9.0		40,509	0	14,996	38,194	93,699	0
25-0555	Eng Tech Jrny	PT	A	LL	Anchorage	2AA	54F	9.0		43,781	0	16,631	40,293	100,705	0
25-0559	Eng Tech Jrny	PT	A	LL	Anchorage	2AA	54J	9.0		45,418	0	17,253	41,259	103,930	0
25-0560	Eng Tech Jrny	PT	A	LL	Anchorage	2AA	54J / K	9.0		45,985	0	17,253	41,501	104,739	0
25-0561	Right-Of-Way Agent 1	FT	A	GP	Anchorage	200	14G	12.0		59,105	4,219	0	44,350	107,674	0
25-0562	E/T Subjrny 3	PT	A	LL	Anchorage	2AA	55C / D	7.5		31,901	0	14,190	31,759	77,850	0
25-0563	Eng Tech Jrny	PT	A	LL	Anchorage	2AA	54N	9.0		52,624	0	19,990	45,511	118,125	0
25-0564	Eng Tech Jrny	PT	A	LL	Anchorage	2AA	54E	9.0		42,299	0	16,068	39,418	97,785	0

Note: If a position is split, an asterisk (*) will appear in the Split/Count column. If the split position is also counted in the component, two asterisks (**) will appear in this column. [No valid job title] appearing in the Job Class Title indicates that the PCN has an invalid class code or invalid range for the class code effective date of this scenario.

Personal Services Expenditure Detail
Department of Transportation and Public Facilities

Scenario: FY2025 Governor (20959)
Component: Central Design, Engineering, and Construction (3432)
RDU: Design, Engineering and Construction (526)

PCN	Job Class Title	Time Status	Retire Code	Barg Unit	Location	Salary Sched	Range / Step	Comp Months	Split / Count	Annual Salaries	COLA	Premium Pay	Annual Benefits	Total Costs	UGF Amount
25-0570	E/T Subjrny 3	PT	A	LL	Anchorage	2AA	55C / D	7.5		31,289	0	14,190	31,497	76,976	0
25-0571	E/T Subjrny 3	PT	A	LL	Anchorage	2AA	55A / B	7.5		29,779	0	13,248	30,448	73,475	0
25-0572	E/T Subjrny 3	PT	A	LL	Wasilla	2BB	55C / D	7.5		32,526	0	14,468	32,145	79,139	0
25-0574	E/T Subjrny 3	PT	A	LL	Anchorage	2AA	55D / E	7.5		32,598	0	14,688	32,270	79,556	0
25-0577	E/T Subjrny 3	PT	A	LL	Anchorage	2AA	55B / C	7.5		30,834	0	13,710	31,097	75,641	0
25-0579	Engineering Assistant 3	FT	A	GP	Anchorage	200	21M	12.0		109,200	10,164	33,180	79,967	232,511	0
25-0581	Engineering Assistant 3	FT	A	GP	Anchorage	200	21J / K	12.0		99,752	7,121	0	61,735	168,608	0
25-0586	E/T Subjrny 2	PT	A	LL	Anchorage	2AA	57B / C	6.0		22,059	0	12,288	24,327	58,674	0
25-0587	E/T Subjrny 2	PT	A	LL	Anchorage	2AA	57B / C	6.0		21,932	0	12,288	24,272	58,492	0
25-0590	Mtlb Subjrny 1	PT	A	LL	Anchorage	2AA	59A	9.0		26,091	0	10,570	30,134	66,795	0
25-0591	E/T Subjrny 2	PT	A	LL	Wasilla	2BB	57A / B	6.0		21,890	0	12,134	24,188	58,212	0
25-0592	E/T Subjrny 2	PT	N	LL	Anchorage	2AA	57A	6.0		20,838	0	11,873	14,873	47,584	0
25-0593	E/T Subjrny 2	PT	A	LL	Anchorage	2AA	57A / B	6.0		21,444	0	11,873	23,886	57,203	0
25-0594	E/T Subjrny 2	PT	A	LL	Wasilla	2BB	57B / C	6.0		22,478	0	12,549	24,617	59,644	0
25-0595	E/T Subjrny 2	PT	A	LL	Wasilla	2BB	57A	6.0		21,295	0	12,134	23,934	57,363	0
25-0598	Engineering Assistant 3	FT	A	GP	Anchorage	200	21C / D	12.0		83,922	5,991	0	54,964	144,877	0
25-0599	Engineer/Architect 1	FT	A	GP	Anchorage	200	22C	12.0		88,940	6,349	0	57,110	152,399	0
25-0601	E/T Subjrny 2	PT	A	LL	Anchorage	2AA	57A / B	6.0		21,541	0	11,873	23,927	57,341	0
25-0604	E/T Subjrny 3	PT	A	LL	Anchorage	2AA	55B / C	7.5		30,778	0	13,710	31,073	75,561	0
25-0605	Mtlb Subjrny 4	PT	A	LL	Anchorage	2AA	54F	9.5		46,213	0	23,284	44,981	114,478	0
25-0606	E/T Subjrny 3	PT	A	LL	Anchorage	2AA	55C / D	7.5		31,435	0	14,190	31,559	77,184	0
25-0609	Procurement Specialist 3	FT	A	GP	Anchorage	200	18D / E	12.0		72,465	5,173	0	50,064	127,702	0
25-0612	Survey, Sub-Journey 2	PT	A	LL	Anchorage	2AA	56A	11.0		40,223	0	5,000	37,008	82,231	0
25-0616	Engineer/Architect 3	FT	A	SS	Anchorage	200	25J	12.0		131,747	0	0	79,401	211,148	0
25-0617	Engineer/Architect 2	FT	A	GP	Anchorage	200	23C	12.0		95,219	6,797	0	59,796	161,812	0
25-0619	Engineer/Architect 1	FT	A	GP	Anchorage	200	22A / B	12.0		85,976	6,137	0	55,843	147,956	0
25-0620	Engineer/Architect 1	FT	A	GP	Anchorage	200	22E / F	12.0		98,209	7,011	0	61,075	166,295	0
25-0621	Env Imp A Mgr 1	FT	A	SS	Anchorage	200	21P	12.0		122,437	0	0	75,419	197,856	0
25-0623	Engineer/Architect 3	FT	A	SS	Anchorage	200	25L	12.0		140,462	0	0	83,128	223,590	0
25-0625	Engineering Assistant 3	FT	A	GP	Anchorage	200	21K	12.0		102,434	9,534	31,124	76,193	219,285	0
25-0626	Engineering Assistant 1	FT	A	GP	Anchorage	200	17C	12.0		63,609	4,541	0	46,276	114,426	0
25-0627	Engineer/Architect 3	FT	A	SS	Anchorage	200	25C	12.0		114,858	0	0	72,177	187,035	0
25-0628	Engineering Assistant 3	FT	A	GP	Anchorage	200	21Q	12.0		125,313	8,945	0	72,667	206,925	0
25-0629	Engineering Assistant 3	FT	A	GP	Anchorage	200	21E / F	12.0		90,575	6,466	0	57,810	154,851	0
25-0631	Engineer/Architect 1	FT	A	GP	Anchorage	200	22P	12.0		129,353	9,234	0	74,395	212,982	0
25-0632	Land Survey Manager 1	FT	A	SS	Anchorage	200	23N	12.0		130,395	0	0	78,823	209,218	0
25-0633	Engineering Assistant 3	FT	A	GP	Anchorage	200	21L	12.0		105,768	9,844	32,137	78,053	225,802	0
25-0634	Engineering Assistant 3	FT	A	GP	Anchorage	200	21J	12.0		99,216	9,807	38,160	77,826	225,009	0

Note: If a position is split, an asterisk (*) will appear in the Split/Count column. If the split position is also counted in the component, two asterisks (**) will appear in this column. [No valid job title] appearing in the Job Class Title indicates that the PCN has an invalid class code or invalid range for the class code effective date of this scenario.

Personal Services Expenditure Detail
Department of Transportation and Public Facilities

Scenario: FY2025 Governor (20959)
Component: Central Design, Engineering, and Construction (3432)
RDU: Design, Engineering and Construction (526)

PCN	Job Class Title	Time Status	Retire Code	Barg Unit	Location	Salary Sched	Range / Step	Comp Months	Split / Count	Annual Salaries	COLA	Premium Pay	Annual Benefits	Total Costs	UGF Amount
25-0635	Engineering Assistant 2	FT	A	GP	Anchorage	200	19C	12.0		72,794	5,196	0	50,205	128,195	0
25-0636	Engineer/Architect 3	FT	A	SS	Anchorage	200	25J	12.0		131,747	0	0	79,401	211,148	0
25-0638	Engineering Assistant 3	FT	A	GP	Anchorage	200	21K	12.0		102,434	7,312	0	62,882	172,628	0
25-0640	Engineering Assistant 3	FT	A	GP	Anchorage	200	21A / B	12.0		80,634	5,756	0	53,558	139,948	0
25-0641	Engineering Assistant 2	FT	A	GP	Anchorage	200	19J	12.0		86,639	8,064	26,324	67,385	188,412	0
25-0642	Engineering Assistant 1	FT	A	GP	Anchorage	200	17C	12.0		63,609	5,920	19,327	54,542	143,398	0
25-0643	Engineering Assistant 3	FT	A	GP	Anchorage	200	21G / J	12.0		96,951	6,921	0	60,537	164,409	0
25-0644	Engineering Assistant 2	FT	A	GP	Anchorage	200	19M	12.0		95,355	6,807	0	59,854	162,016	0
25-0646	Engineering Assistant 2	FT	A	GP	Anchorage	200	19N / O	12.0		101,520	7,247	0	62,491	171,258	0
25-0648	Engineering Assistant 3	FT	A	GP	Anchorage	200	21B / C	12.0		82,675	5,902	0	54,431	143,008	0
25-0649	Engineering Assistant 3	FT	A	GP	Anchorage	200	21O / P	12.0		119,812	8,553	0	70,314	198,679	0
25-0650	Engineering Assistant 2	FT	A	GP	Anchorage	200	19G / J	12.0		84,194	7,815	25,276	65,891	183,176	0
25-0651	Engineer/Architect 1	FT	A	GP	Anchorage	200	22E / F	12.0		96,265	6,872	0	60,243	163,380	0
25-0652	Engineer/Architect 1	FT	A	GP	Anchorage	200	22J / K	12.0		109,353	7,806	0	65,841	183,000	0
25-0653	Engineering Assistant 2	FT	A	GP	Anchorage	200	19B / C	12.0		72,678	6,717	21,412	59,313	160,120	0
25-0654	Engineering Assistant 2	FT	A	GP	Anchorage	200	19M / N	12.0		98,326	9,087	28,973	73,516	209,902	0
25-0655	Engineering Assistant 2	FT	A	GP	Anchorage	200	19D / E	12.0		77,507	5,533	0	52,220	135,260	0
25-0656	Engineer/Architect 1	FT	A	GP	Anchorage	200	22G	12.0		102,044	7,284	0	62,715	172,043	0
25-0657	Engineer/Architect 1	FT	A	GP	Anchorage	200	22K / L	12.0		109,875	7,843	0	66,064	183,782	0
25-0659	Engineering Assistant 1	FT	A	GP	Anchorage	200	17C	12.0		63,609	4,541	0	46,276	114,426	0
25-0661	Engineering Assistant 3	FT	A	GP	Anchorage	200	21K	12.0		102,434	7,312	0	62,882	172,628	0
25-0662	Engineering Assistant 1	FT	A	GP	Anchorage	200	17C	12.0		63,609	4,541	0	46,276	114,426	0
25-0663	Environmental Impact Analyst 3	FT	A	GP	Anchorage	200	19C	12.0		72,794	5,196	0	50,205	128,195	0
25-0665	Engineering Assistant 3	FT	A	GP	Anchorage	200	21C / D	12.0		85,899	6,132	0	55,810	147,841	0
25-0666	OS Dupl Mach Op	FT	A	GP	Anchorage	200	12M	12.0		58,949	4,208	0	44,283	107,440	0
25-0667	Gis Analyst 2	FT	A	GP	Anchorage	200	17L / M	12.0		81,118	5,791	0	53,765	140,674	0
25-0669	Engineer/Architect 4	FT	A	SS	Anchorage	200	26O / P	12.0		161,093	0	0	91,952	253,045	0
25-0670	Engineer/Architect 3	FT	A	SS	Anchorage	200	25K / L	12.0		136,770	0	0	81,549	218,319	0
25-0671	Engineer/Architect 1	FT	A	GP	Anchorage	200	22E / F	12.0		96,714	6,904	0	60,435	164,053	0
25-0672	Engineer/Architect 2	FT	A	SS	Anchorage	200	23C	12.0		100,110	0	0	65,870	165,980	0
25-0674	Engineering Assistant 3	FT	A	GP	Anchorage	200	21N	12.0		112,749	10,494	34,258	81,946	239,447	0
25-0675	Engineer/Architect 2	FT	A	GP	Anchorage	200	23O	12.0		133,770	9,549	0	76,284	219,603	0
25-0676	Engineer/Architect 1	FT	A	GP	Anchorage	200	22K / L	12.0		109,875	7,843	0	66,064	183,782	0
25-0677	Procurement Specialist 5	FT	A	SS	Anchorage	200	21B / C	12.0		85,729	0	0	59,719	145,448	0
25-0678	Engineer/Architect 2	FT	A	SS	Anchorage	200	23J	12.0		114,754	0	0	72,133	186,887	0
25-0681	Engineering Assistant 3	FT	A	GP	Anchorage	200	21L	12.0		105,768	9,844	32,137	78,053	225,802	0
25-0683	Engineering Assistant 3	FT	A	GP	Anchorage	200	21E	12.0		88,940	7,506	16,214	64,045	176,705	0
25-0684	Engineering Assistant 2	FT	A	GP	Anchorage	200	19B / C	12.0		70,763	6,580	21,412	58,494	157,249	0

Note: If a position is split, an asterisk (*) will appear in the Split/Count column. If the split position is also counted in the component, two asterisks (**) will appear in this column. [No valid job title] appearing in the Job Class Title indicates that the PCN has an invalid class code or invalid range for the class code effective date of this scenario.

Personal Services Expenditure Detail
Department of Transportation and Public Facilities

Scenario: FY2025 Governor (20959)
Component: Central Design, Engineering, and Construction (3432)
RDU: Design, Engineering and Construction (526)

PCN	Job Class Title	Time Status	Retire Code	Barg Unit	Location	Salary Sched	Range / Step	Comp Months	Split / Count	Annual Salaries	COLA	Premium Pay	Annual Benefits	Total Costs	UGF Amount
25-0685	Engineering Assistant 3	FT	A	GP	Anchorage	200	21C	12.0		83,187	6,395	6,399	57,387	153,368	0
25-0687	Engineer/Architect 1	FT	A	GP	Anchorage	200	22C	12.0		88,940	6,349	0	57,110	152,399	0
25-0688	Engineering Assistant 3	FT	A	GP	Anchorage	200	21O / P	12.0		118,089	10,969	35,571	84,791	249,420	0
25-0689	Engineering Assistant 2	FT	A	GP	Anchorage	200	19G / J	12.0		84,769	6,051	0	55,326	146,146	0
25-0693	Engineering Assistant 2	FT	A	GP	Anchorage	200	19B / C	12.0		70,763	6,580	21,412	58,494	157,249	0
25-0694	Engineering Assistant 3	FT	A	GP	Anchorage	200	21K / L	12.0		104,101	9,653	31,124	76,906	221,784	0
25-0695	Right-Of-Way Agent 3	FT	A	GP	Anchorage	200	18B / C	12.0		67,397	4,811	0	47,896	120,104	0
25-0696	Engineering Assistant 2	FT	A	GP	Anchorage	200	19J	12.0		86,639	8,064	26,324	67,385	188,412	0
25-0701	Engineering Assistant 2	FT	A	GP	Anchorage	200	19J	12.0		86,639	8,064	26,324	67,385	188,412	0
25-0702	Drafting Technician 3	FT	A	GP	Anchorage	200	15J / K	12.0		67,990	4,853	0	48,150	120,993	0
25-0705	Drafting Technician 3	FT	A	GP	Anchorage	200	15M	12.0		72,872	5,202	0	50,238	128,312	0
25-0706	Drafting Technician 2	FT	A	GP	Anchorage	200	13A	12.0		45,045	3,216	0	38,336	86,597	0
25-0712	Right-Of-Way Agent 2	FT	A	GP	Anchorage	200	16C	12.0		59,105	4,219	0	44,350	107,674	0
25-0715	Right-Of-Way Agent 1	FT	A	GP	Anchorage	200	14C	12.0		51,383	3,668	0	41,047	96,098	0
25-0717	Engineering Assistant 3	FT	A	GP	Anchorage	200	21K	12.0		102,434	7,312	0	62,882	172,628	0
25-0719	Right-Of-Way Agent 2	FT	A	GP	Anchorage	200	16C / D	12.0		60,244	4,301	0	44,837	109,382	0
25-0721	Mlt Jrny	PT	A	LL	Anchorage	2AA	53L	9.0		52,047	0	27,680	48,554	128,281	0
25-0724	Engineering Geologist 2	FT	A	GP	Anchorage	200	18C / D	12.0		69,824	5,575	8,278	52,475	136,152	0
25-0725	Regional Engineering Geologist	FT	A	SS	Anchorage	200	22Q	12.0		136,587	0	0	81,471	218,058	0
25-0726	Survey, Journey	PT	A	LL	Anchorage	2AA	54J / K	11.0		56,154	0	17,253	49,063	122,470	0
25-0728	Engineering Assistant 3	FT	A	GP	Anchorage	200	21B / C	12.0		87,449	7,994	24,529	66,964	186,936	0
25-0731	Engineering Assistant 3	FT	A	GG	Anchorage	200	21P	12.0		120,742	11,240	36,715	86,415	255,112	0
25-0733	Engineering Assistant 3	FT	A	GP	Anchorage	200	21B / C	12.0		81,897	5,846	0	54,098	141,841	0
25-0735	Engineering Assistant 3	FT	A	GP	Anchorage	200	21C	12.0		83,187	7,743	25,276	65,460	181,666	0
25-0736	Mtlb Foreman	PT	A	LL	Anchorage	2AA	51R	9.0		73,540	0	39,110	62,635	175,285	0
25-0737	Engineering Assistant 2	FT	A	GP	Anchorage	200	19G	12.0		83,187	8,222	31,995	68,334	191,738	0
25-0738	Engineering Assistant 2	FT	A	GP	Anchorage	200	19K / L	12.0		92,110	6,575	0	58,466	157,151	0
25-0741	Mtlb Subjrny 3	FT	A	LL	Anchorage	2AA	56F	12.0		52,115	0	11,277	46,385	109,777	0
25-0743	Engineer/Architect 3	FT	A	SS	Anchorage	200	25R	12.0		170,153	0	0	95,677	265,830	0
25-0747	Engineering Assistant 3	FT	A	GP	Anchorage	200	21C / D	12.0		84,378	6,480	6,399	57,896	155,153	0
25-0751	Environmental Impact Analyst 3	FT	A	GP	Anchorage	200	19M / N	12.0		98,068	7,001	0	61,014	166,083	0
25-0752	Environmental Impact Analyst 1	FT	A	GP	Anchorage	200	15C	12.0		55,205	3,941	0	42,682	101,828	0
25-0753	Environmental Impact Analyst 3	FT	A	GP	Anchorage	200	19J / K	12.0		87,926	6,277	0	56,677	150,880	0
25-0755	Environmental Impact Analyst 3	FT	A	GP	Anchorage	200	19J / K	12.0		87,809	6,268	0	56,627	150,704	0

Note: If a position is split, an asterisk (*) will appear in the Split/Count column. If the split position is also counted in the component, two asterisks (**) will appear in this column. [No valid job title] appearing in the Job Class Title indicates that the PCN has an invalid class code or invalid range for the class code effective date of this scenario.

Personal Services Expenditure Detail
Department of Transportation and Public Facilities

Scenario: FY2025 Governor (20959)
Component: Central Design, Engineering, and Construction (3432)
RDU: Design, Engineering and Construction (526)

PCN	Job Class Title	Time Status	Retire Code	Barg Unit	Location	Salary Sched	Range / Step	Comp Months	Split / Count	Annual Salaries	COLA	Premium Pay	Annual Benefits	Total Costs	UGF Amount
25-0756	Environmental Impact Analyst 3	FT	A	GP	Matanuska Susitna areawide	200	19A / B	12.0		70,237	5,014	0	49,111	124,362	0
25-0758	Engineering Associate	FT	A	GP	Anchorage	200	21E / F	12.0		90,119	8,875	34,207	72,245	205,446	0
25-0759	Engineering Assistant 3	FT	A	GP	Anchorage	200	21K	12.0		102,434	9,534	31,124	76,193	219,285	0
25-0760	Engineering Assistant 2	FT	A	GP	Anchorage	200	19D / E	12.0		75,584	7,468	29,032	63,815	175,899	0
25-0762	Environmental Impact Analyst 3	FT	A	GP	Anchorage	200	19D / E	12.0		77,150	5,507	0	52,068	134,725	0
25-0763	OS Dupl Mach Op	FT	A	GP	Anchorage	200	12B / C	12.0		44,324	3,164	0	38,028	85,516	0
25-0766	Engineering Geologist 3	FT	A	GP	Anchorage	200	20B / C	12.0		76,793	7,774	32,109	65,648	182,324	0
25-0767	Engineering Assistant 2	FT	A	GP	Anchorage	200	19G / J	12.0		86,495	8,458	31,995	69,749	196,697	0
25-0770	Engineering Assistant 1	FT	A	GP	Anchorage	200	17B / C	12.0		61,592	4,397	0	45,414	111,403	0
25-0771	Engineer/Architect 4	FT	A	SS	Anchorage	200	26N / O	12.0		158,461	0	0	90,826	249,287	0
25-0791	Survey, Journey	PT	A	LL	Anchorage	2AA	54A	11.0		45,027	0	17,715	44,501	107,243	0
25-0792	Survey Lead	PT	A	LL	Anchorage	2AA	53P	11.0		73,717	0	34,803	64,081	172,601	0
25-0795	Engineer/Architect 1	FT	A	SS	Anchorage	200	22C	12.0		93,558	0	0	63,067	156,625	0
25-0797	Engineer/Architect 3	FT	A	SS	Anchorage	200	25L / M	12.0		141,791	0	0	83,697	225,488	0
25-0799	Engineering Assistant 3	FT	A	GP	Anchorage	200	21N	12.0		112,749	10,494	34,258	81,946	239,447	0
25-0800	Engineering Associate	FT	A	GP	Anchorage	200	21F / G	12.0		93,662	6,686	0	59,130	159,478	0
25-0801	Accountant 3	FT	A	SS	Anchorage	200	18F / J	12.0		80,035	0	0	57,284	137,319	0
25-0802	Engineering Assistant 2	FT	A	GP	Anchorage	200	19D / E	12.0		77,784	5,553	0	52,339	135,676	0
25-0803	Procurement Specialist 2	FT	A	GP	Anchorage	200	16A / B	12.0		57,134	4,079	0	43,507	104,720	0
25-0804	Engineering Assistant 2	FT	A	GP	Anchorage	200	19G / J	12.0		83,762	8,263	31,995	68,580	192,600	0
25-0805	Engineering Assistant 2	FT	A	GP	Anchorage	200	19E / F	12.0		79,010	6,495	11,979	57,987	155,471	0
25-0807	Engineering Assistant 2	FT	A	GP	Anchorage	200	19M	12.0		95,355	8,875	28,973	72,246	205,449	0
25-0808	Engineering Assistant 2	FT	A	GP	Anchorage	200	19A / B	12.0		70,139	5,007	0	49,069	124,215	0
25-0809	Engineering Assistant 2	FT	A	GP	Anchorage	200	19M / N	12.0		95,484	8,884	28,973	72,301	205,642	0
25-0810	Engineering Assistant 3	FT	A	GP	Anchorage	200	21E / F	12.0		91,219	8,954	34,207	72,715	207,095	0
25-0811	Engineering Assistant 2	FT	A	GP	Anchorage	200	19C / D	12.0		73,489	7,245	27,997	62,476	171,207	0
25-0814	Engineering Assistant 2	FT	A	GP	Anchorage	200	19G / J	12.0		84,625	8,325	31,995	68,949	193,894	0
25-0815	Engineering Assistant 2	FT	A	GP	Anchorage	200	19D / E	12.0		75,782	7,482	29,032	63,900	176,196	0
25-0819	Engineering Assistant 1	FT	A	GP	Anchorage	200	17C	12.0		63,609	4,541	0	46,276	114,426	0
25-0820	Engineering Associate	FT	A	GP	Anchorage	200	21J / K	12.0		100,396	7,167	0	62,010	169,573	0
25-0821	Engineering Assistant 3	FT	A	GP	Anchorage	200	21B / C	12.0		83,023	5,927	0	54,580	143,530	0
25-0822	Engineering Assistant 2	FT	A	GP	Anchorage	200	19K / L	12.0		90,512	8,917	34,402	72,496	206,327	0
25-0828	Eng Tech Jrny	PT	A	LL	Anchorage	2AA	54N	9.0		52,624	0	25,305	47,785	125,714	0
25-0829	Eng Tech Jrny	PT	A	LL	Wasilla	2BB	54B / C	9.0		39,836	0	18,690	39,486	98,012	0
25-0832	Eng Tech Jrny	PT	A	LL	Anchorage	2AA	54K / L	9.0		47,216	0	22,657	44,339	114,212	0
25-0833	Eng Tech Jrny	PT	A	LL	Anchorage	2AA	54F	9.0		43,781	0	21,052	42,184	107,017	0

Note: If a position is split, an asterisk (*) will appear in the Split/Count column. If the split position is also counted in the component, two asterisks (**) will appear in this column. [No valid job title] appearing in the Job Class Title indicates that the PCN has an invalid class code or invalid range for the class code effective date of this scenario.

Personal Services Expenditure Detail
Department of Transportation and Public Facilities

Scenario: FY2025 Governor (20959)
Component: Central Design, Engineering, and Construction (3432)
RDU: Design, Engineering and Construction (526)

PCN	Job Class Title	Time Status	Retire Code	Barg Unit	Location	Salary Sched	Range / Step	Comp Months	Split / Count	Annual Salaries	COLA	Premium Pay	Annual Benefits	Total Costs	UGF Amount
25-0836	E/T Subjrny 3	PT	A	LL	Wasilla	2BB	55A / B	7.5		30,579	0	17,122	32,447	80,148	0
25-0857	Accountant 3	FT	A	SS	Anchorage	200	18C / D	12.0		73,258	0	0	54,385	127,643	0
25-0870	E/T Subjrny 2	PT	A	LL	Anchorage	2AA	57A	6.0		20,838	0	15,030	24,977	60,845	0
25-0875	E/T Subjrny 2	PT	A	LL	Anchorage	2AA	57A	6.0		20,838	0	15,030	24,977	60,845	0
25-0877	E/T Subjrny 2	PT	A	LL	Anchorage	2AA	57B	6.0		21,565	0	15,555	25,513	62,633	0
25-0886	Engineer/Architect 1	FT	A	GP	Anchorage	200	22F / G	12.0		101,099	7,217	0	62,311	170,627	0
25-0887	Survey Lead	PT	A	LL	Anchorage	2AA	53N	11.0		68,474	0	26,940	58,475	153,889	0
25-0889	Survey Lead	PT	A	LL	Anchorage	2AA	53O	11.0		71,048	0	27,952	60,009	159,009	0
25-0893	Gis Analyst 1	FT	A	GP	Anchorage	200	15C	12.0		58,873	4,203	0	44,251	107,327	0
25-0896	E/T Subjrny 3	PT	A	LL	Anchorage	2AA	55D	7.5		32,221	0	18,592	33,778	84,591	0
25-0907	E/T Subjrny 2	PT	A	LL	Anchorage	2AA	57A / B	6.0		21,444	0	15,030	25,236	61,710	0
25-0909	Engineering Assistant 2	FT	A	GP	Anchorage	200	19B / C	12.0		70,492	6,967	27,105	60,813	165,377	0
25-0925	Engineering Assistant 1	FT	A	GP	Anchorage	200	17C / D	12.0		65,384	5,366	9,786	51,221	131,757	0
25-0927	Tech Eng/Arch 1	FT	A	GP	Anchorage	200	24L / M	12.0		130,436	9,311	0	74,858	214,605	0
25-0929	Land Surveyor 1	FT	A	GP	Anchorage	200	21J	12.0		99,216	7,083	0	61,505	167,804	0
25-0933	Administrative Assistant 1	FT	A	GP	Anchorage	200	12B / C	12.0		44,203	3,155	0	37,976	85,334	0
25-0954	Survey, Journey	PT	A	LL	Anchorage	2AA	54J / K	11.0		56,928	0	21,840	51,356	130,124	0
25-0956	E/T Subjrny 2	PT	A	LL	Anchorage	2AA	57A / B	7.5		26,811	0	15,030	29,941	71,782	0
25-0957	E/T Subjrny 2	PT	A	LL	Anchorage	2AA	57B / C	7.5		25,870	0	15,555	29,763	71,188	0
25-0958	Environmental Impact Analyst 3	FT	A	GP	Anchorage	200	19K	12.0		89,447	6,385	0	57,327	153,159	0
25-0960	Engineer/Architect 3	FT	A	SS	Anchorage	200	25N	12.0		149,739	0	0	87,096	236,835	0
25-0962	Engineer/Architect 1	FT	A	GP	Anchorage	200	22G	12.0		102,044	7,284	0	62,715	172,043	0
25-0963	Tech Eng/Arch 1	FT	A	GP	Anchorage	200	24F / G	12.0		116,536	8,319	0	68,913	193,768	0
25-0964	Engineer/Architect 3	FT	A	SS	Anchorage	200	25F	12.0		127,608	0	0	77,631	205,239	0
25-0967	Engineer/Architect 3	FT	A	SS	Anchorage	200	25C / D	12.0		115,599	0	0	72,494	188,093	0
25-1431	Engineer/Architect 2	FT	A	SS	Anchorage	200	23N	12.0		130,395	0	0	78,823	209,218	0
25-1504	Mlt Jrny	PT	A	LL	Anchorage	2AA	53P	6.0		40,209	0	34,803	41,719	116,731	0
25-1517	Mtlb Subjrny 1	FT	A	LL	Anchorage	2AA	59A / B	12.0		38,089	0	18,732	43,575	100,396	0
25-1626	Environmental Impact Analyst 2	FT	A	GP	Anchorage	200	17C / D	12.0		63,889	4,561	0	46,396	114,846	0
25-1649	Mtlb Subjrny 2	PT	A	LL	Anchorage	2AA	57B	6.0		21,565	0	15,555	25,513	62,633	0
25-1778	Engineer/Architect 3	FT	A	SS	Anchorage	200	25F	12.0		127,608	0	0	77,631	205,239	0
25-1835	Engineering Assistant 1	FT	A	GP	Anchorage	200	17C	12.0		63,609	4,541	0	46,276	114,426	0
25-2301	Right-Of-Way Agent 4	FT	A	SS	Anchorage	200	20K / L	12.0		98,274	0	0	65,084	163,358	0
25-3399	Engineering Assistant 3	FT	A	GP	Anchorage	200	21K	12.0		102,434	9,534	31,124	76,193	219,285	0
25-3400	Engineer/Architect 2	FT	A	SS	Anchorage	200	23L	12.0		122,325	0	0	75,371	197,696	0
25-3403	Engineering Assistant 2	FT	A	GP	Anchorage	200	19J / K	12.0		89,213	8,747	33,322	71,479	202,761	0
25-3404	Engineering Assistant 2	FT	A	GP	Anchorage	200	19K / L	12.0		91,868	9,014	34,402	73,076	208,360	0

Note: If a position is split, an asterisk (*) will appear in the Split/Count column. If the split position is also counted in the component, two asterisks (**) will appear in this column. [No valid job title] appearing in the Job Class Title indicates that the PCN has an invalid class code or invalid range for the class code effective date of this scenario.

Personal Services Expenditure Detail
Department of Transportation and Public Facilities

Scenario: FY2025 Governor (20959)
Component: Central Design, Engineering, and Construction (3432)
RDU: Design, Engineering and Construction (526)

PCN	Job Class Title	Time Status	Retire Code	Barg Unit	Location	Salary Sched	Range / Step	Comp Months	Split / Count	Annual Salaries	COLA	Premium Pay	Annual Benefits	Total Costs	UGF Amount
25-3408	Engineering Assistant 2	FT	A	GP	Anchorage	200	19B / C	12.0		70,492	5,806	10,842	53,857	140,997	0
25-3438	Engineering Assistant 2	FT	A	GP	Anchorage	200	19B / C	12.0		71,305	5,090	0	49,568	125,963	0
25-3439	Engineering Assistant 3	FT	A	GP	Anchorage	200	21C	12.0		83,187	5,938	0	54,650	143,775	0
25-3440	Engineering Assistant 3	FT	A	GP	Anchorage	200	21E / F	12.0		90,816	6,971	6,841	60,839	165,467	0
25-3441	Engineer/Architect 1	FT	A	GP	Anchorage	200	22C	12.0		88,940	6,349	0	57,110	152,399	0
25-3442	Engineering Assistant 3	FT	A	GP	Anchorage	200	21C	12.0		83,187	5,938	0	54,650	143,775	0
25-3443	Engineering Assistant 3	FT	A	GP	Anchorage	200	21P	12.0		120,762	8,621	0	70,721	200,104	0
25-3444	Engineering Assistant 1	FT	A	GP	Anchorage	200	17C	12.0		63,609	5,239	9,786	50,462	129,096	0
25-3445	Engineering Assistant 2	FT	A	GP	Anchorage	200	19C / D	12.0		73,556	6,850	22,398	60,110	162,914	0
25-3446	Engineering Assistant 1	FT	A	GP	Anchorage	200	17B / C	12.0		61,460	4,387	0	45,357	111,204	0
25-3447	Right-Of-Way Agent 3	FT	A	GP	Anchorage	200	18C	12.0		68,114	4,862	0	48,203	121,179	0
25-3448	Land Surveyor 1	FT	A	GP	Anchorage	200	21N / O	12.0		113,818	8,125	0	67,751	189,694	0
25-3459	Engineering Geologist 1	FT	A	GP	Anchorage	200	16C	12.0		59,105	5,842	22,732	54,072	141,751	0
25-3498	Environmental Impact Analyst 2	FT	A	GP	Anchorage	200	17A / B	12.0		61,198	4,369	0	45,245	110,812	0
25-3501	Administrative Assistant 2	FT	A	GP	Anchorage	200	14C	12.0		51,383	3,668	0	41,047	96,098	0
25-3503	Engineering Assistant 2	FT	A	GP	Anchorage	200	19O	12.0		101,654	9,461	30,887	75,758	217,760	0
25-3504	Engineering Assistant 2	FT	A	GP	Anchorage	200	19E / F	12.0		79,655	7,824	29,947	65,947	183,373	0
25-3505	Engineering Assistant 2	FT	A	GP	Anchorage	200	19C / D	12.0		74,588	7,323	27,997	62,946	172,854	0
25-3506	Engineering Assistant 2	FT	A	GP	Anchorage	200	19F / G	12.0		81,344	8,023	31,050	67,142	187,559	0
25-3507	Engineering Assistant 2	FT	A	GP	Anchorage	200	19J / K	12.0		88,043	8,664	33,322	70,978	201,007	0
25-3508	Engineering Assistant 2	FT	A	GP	Anchorage	200	19L / M	12.0		92,853	8,631	28,060	70,785	200,329	0
25-3509	Engineering Assistant 2	FT	A	GP	Anchorage	200	19E / F	12.0		79,655	7,824	29,947	65,947	183,373	0
25-3513	Engineering Assistant 3	FT	A	GP	Anchorage	200	21O	12.0		116,415	10,835	35,372	83,990	246,612	0
25-3514	Engineering Assistant 3	FT	A	GP	Anchorage	200	21K / L	12.0		104,518	9,458	27,972	75,737	217,685	0
25-3515	Engineering Assistant 3	FT	A	GP	Anchorage	200	21P	12.0		120,742	11,402	39,039	87,409	258,592	0
25-3550	Engineering Assistant 3	FT	A	GP	Anchorage	200	21M / N	12.0		110,827	10,040	29,820	79,225	229,912	0
25-3553	Engineer/Architect 2	FT	A	SS	Anchorage	200	23J	12.0		114,754	0	0	72,133	186,887	0
25-3559	Engineer/Architect 1	FT	A	GP	Anchorage	200	22G	12.0		102,044	7,284	0	62,715	172,043	0
25-3560	Engineer/Architect 2	FT	A	GP	Anchorage	200	23L	12.0		121,524	8,675	0	71,046	201,245	0
25-3587	Environmental Impact Analyst 1	FT	A	GP	Anchorage	200	15C	12.0		55,205	3,941	0	42,682	101,828	0
25-3588	Environmental Impact Analyst 2	FT	A	GP	Anchorage	200	17F / G	12.0		70,492	5,032	0	49,220	124,744	0
25-3683	Right-Of-Way Agent 2	FT	A	GP	Anchorage	200	16J / K	12.0		72,475	5,174	0	50,068	127,717	0
25-3684	Right-Of-Way Agent 2	FT	A	GP	Anchorage	200	16C	12.0		59,105	4,219	0	44,350	107,674	0
25-3736	Engineering Assistant 3	FT	A	GP	Anchorage	200	21D / E	12.0		88,804	6,339	0	57,052	152,195	0
25-3868	Engineer/Architect 4	FT	A	SS	Matanuska Susitna	200	26S	12.0		181,979	0	0	100,010	281,989	0

Note: If a position is split, an asterisk (*) will appear in the Split/Count column. If the split position is also counted in the component, two asterisks (**) will appear in this column. [No valid job title] appearing in the Job Class Title indicates that the PCN has an invalid class code or invalid range for the class code effective date of this scenario.

Personal Services Expenditure Detail
Department of Transportation and Public Facilities

Scenario: FY2025 Governor (20959)
Component: Central Design, Engineering, and Construction (3432)
RDU: Design, Engineering and Construction (526)

PCN	Job Class Title	Time Status	Retire Code	Barg Unit	Location	Salary Sched	Range / Step	Comp Months	Split / Count	Annual Salaries	COLA	Premium Pay	Annual Benefits	Total Costs	UGF Amount
					areawide										
25-IN0916	E/T Subjrny 1	NP	N	LL	Anchorage	2AA	59A	4.0		12,367	0	0	1,694	14,061	0
25-IN0917	E/T Subjrny 1	NP	N	LL	Anchorage	2AA	59A	4.0		12,367	0	0	1,694	14,061	0
25-IN0918	E/T Subjrny 1	NP	N	LL	Anchorage	2AA	59A	4.0		12,367	0	5,352	2,428	20,147	0
25-IN0919	E/T Subjrny 1	NP	N	LL	Anchorage	2AA	59A	4.0		12,367	0	0	1,694	14,061	0
25-IN0920	E/T Subjrny 1	NP	N	LL	Anchorage	2AA	59A	4.0		12,367	0	0	1,694	14,061	0
25-IN0921	E/T Subjrny 1	NP	N	LL	Anchorage	2AA	59A	6.0		18,550	0	0	2,541	21,091	0
25-IN0922	E/T Subjrny 1	NP	N	LL	Anchorage	2AA	59A	6.0		18,550	0	0	2,541	21,091	0
25-IN0923	E/T Subjrny 2	NP	N	LL	Anchorage	2AA	57A	6.0		20,838	0	0	2,855	23,693	0
25-IN0924	E/T Subjrny 2	NP	N	LL	Anchorage	2AA	57A	6.0		20,838	0	0	2,855	23,693	0
25-IN0925	E/T Subjrny 1	NP	N	LL	Anchorage	2AA	59A	6.0		18,550	0	0	2,541	21,091	0
25-IN1215	College Intern 2	NP	N	EE	Anchorage	N00	9A	9.0		26,398	0	0	3,617	30,015	0
25-IN1436	College Intern 2	NP	N	EE	Anchorage	N00	9A	6.0		17,599	0	0	2,411	20,010	0
25-IN1437	College Intern 3	NP	N	EE	Anchorage	N00	10A	9.5		29,578	0	0	4,052	33,630	0
25-IN1438	College Intern 1	NP	N	EE	Anchorage	N00	8A	9.5		26,259	0	0	3,597	29,856	0
25-IN1441	College Intern 1	NP	N	EE	Anchorage	N00	8A	6.0		16,585	0	0	2,272	18,857	0
25-IN1503	College Intern 2	NP	N	EE	Anchorage	N00	9A	9.0		26,398	0	0	3,617	30,015	0
25-N09022	E/T Subjrny 1	NP	N	LL	Wasilla	2BB	59A	4.0		12,672	0	8,226	2,863	23,761	0
25-N09023	E/T Subjrny 1	NP	N	LL	Anchorage	2AA	59A	4.0		12,367	0	0	1,694	14,061	0
25-N09024	E/T Subjrny 1	NP	N	LL	Wasilla	2BB	59A	4.0		12,672	0	0	1,736	14,408	0
25-N09085	E/T Subjrny 1	NP	N	LL	Anchorage	2AA	59A	4.0		12,367	0	0	1,694	14,061	0
25-N09087	E/T Subjrny 1	NP	N	LL	Anchorage	2AA	59A	4.0		12,367	0	8,028	2,794	23,189	0
25-N09088	E/T Subjrny 1	NP	N	LL	Anchorage	2AA	59A	4.0		12,367	0	0	1,694	14,061	0
25-N09089	E/T Subjrny 1	NP	N	LL	Anchorage	2AA	59A	4.0		12,367	0	0	1,694	14,061	0
25-N09090	E/T Subjrny 1	NP	N	LL	Anchorage	2AA	59A	4.0		12,367	0	0	1,694	14,061	0
25-N09091	E/T Subjrny 1	NP	N	LL	Wasilla	2BB	59A	4.0		12,672	0	0	1,736	14,408	0
25-T011	Electrical Engineer	NP	A	XE	Anchorage	N00	25R / S	12.0		162,381	0	0	48,906	211,287	0

Note: If a position is split, an asterisk (*) will appear in the Split/Count column. If the split position is also counted in the component, two asterisks (**) will appear in this column. [No valid job title] appearing in the Job Class Title indicates that the PCN has an invalid class code or invalid range for the class code effective date of this scenario.

Personal Services Expenditure Detail
Department of Transportation and Public Facilities

Scenario: FY2025 Governor (20959)
Component: Central Design, Engineering, and Construction (3432)
RDU: Design, Engineering and Construction (526)

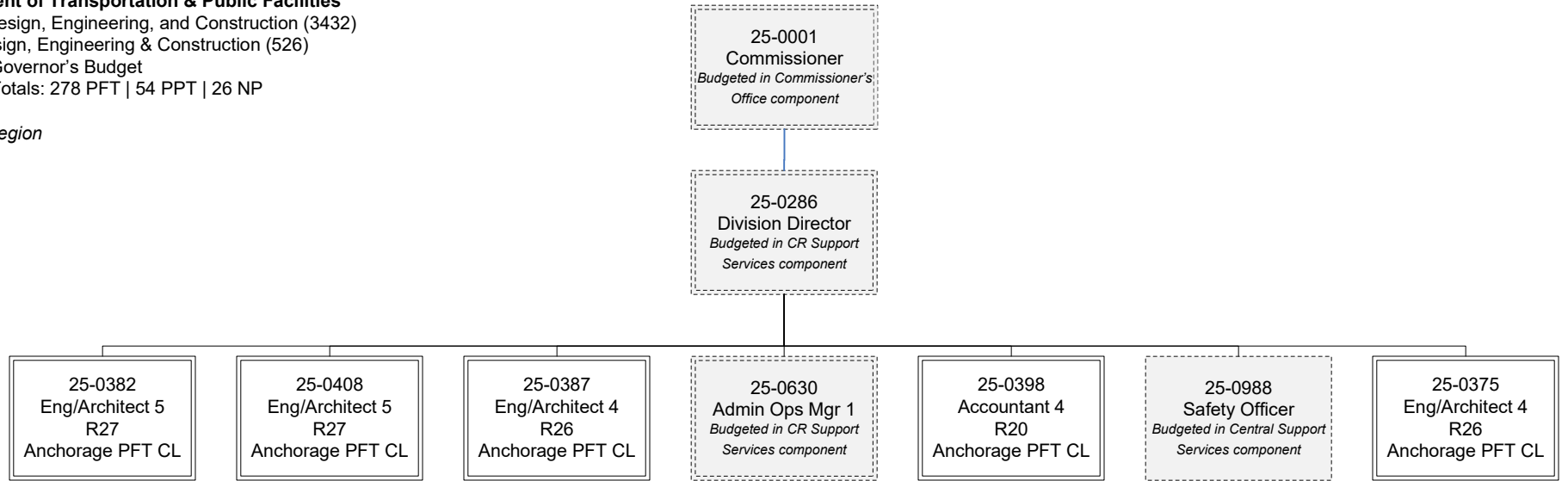
PCN	Job Class Title	Time Status	Retire Code	Barg Unit	Location	Salary Sched	Range / Step	Comp Months	Split / Count	Annual Salaries	COLA	Premium Pay	Annual Benefits	Total Costs	UGF Amount
	Total Positions		New	Deleted										Total Salary Costs:	28,625,616
														Total COLA:	1,515,470
	Full Time Positions:	278	0	0										Total Premium Pay:	3,454,740
	Part Time Positions:	54	0	0										Total Benefits:	19,768,343
	Non Permanent Positions:	26	0	0											
	Positions in Component:	358	0	0											
	Total Component Months:	3,919.0													
														Total Pre-Vacancy:	53,364,169
														Minus Vacancy Adjustment of 7.00%:	(3,734,069)
														Total Post-Vacancy:	49,630,100
														Plus Lump Sum Premium Pay:	0
														Personal Services Line 100:	49,630,100

PCN Funding Sources:	Pre-Vacancy	Post-Vacancy	Percent
1004 Unrestricted General Fund Receipts	209,221	194,581	0.39%
1005 General Fund/Program Receipts	538,180	500,522	1.01%
1007 Interagency Receipts	59,783	55,600	0.11%
1039 Unallocated Indirect Cost Recovery	7,697,337	7,158,729	14.42%
1061 Capital Improvement Project Receipts	44,859,647	41,720,668	84.06%
Total PCN Funding:	53,364,169	49,630,100	100.00%

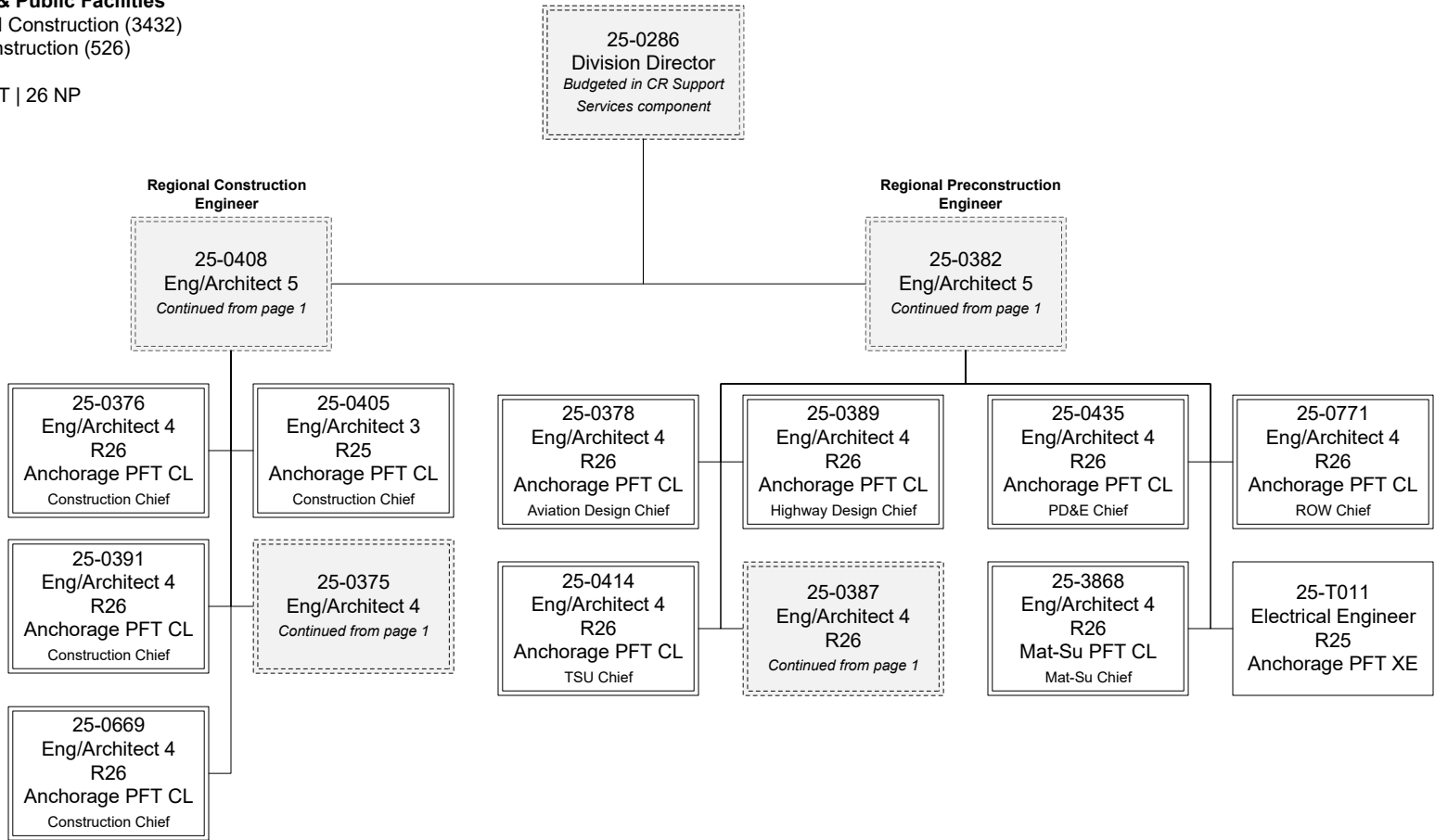
Note: If a position is split, an asterisk (*) will appear in the Split/Count column. If the split position is also counted in the component, two asterisks (**) will appear in this column. [No valid job title] appearing in the Job Class Title indicates that the PCN has an invalid class code or invalid range for the class code effective date of this scenario.

Department of Transportation & Public Facilities
Central Design, Engineering, and Construction (3432)
RDU: Design, Engineering & Construction (526)
FY2025 Governor's Budget
Position Totals: 278 PFT | 54 PPT | 26 NP

Central Region

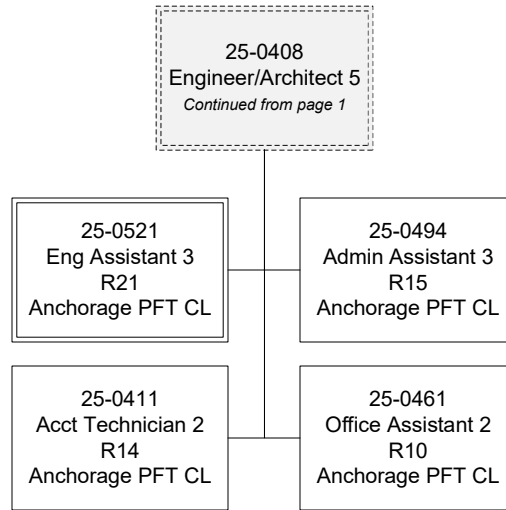


Central Region Leads

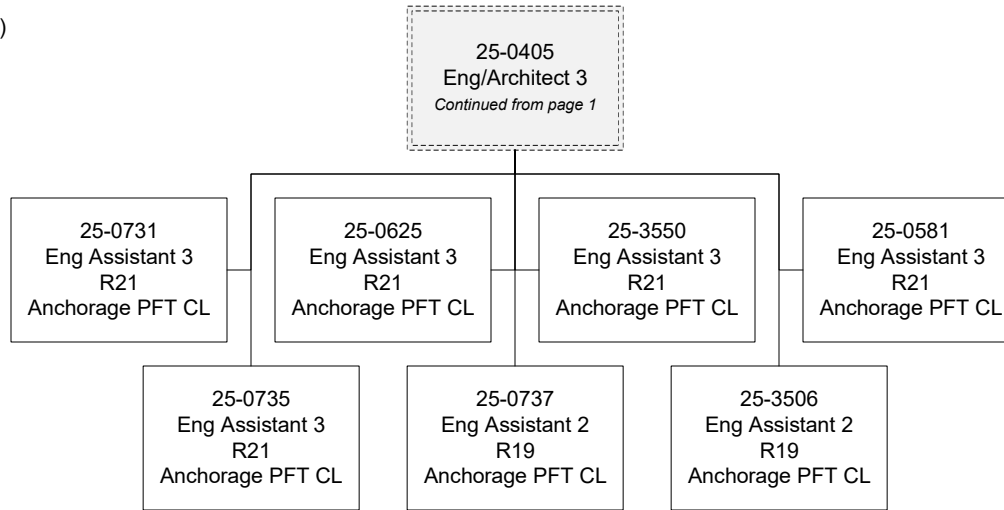


Department of Transportation & Public Facilities
Central Design, Engineering, and Construction (3432)
RDU: Design, Engineering & Construction (526)
FY2025 Governor's Budget
Position Totals: 278 PFT | 54 PPT | 26 NP

Construction

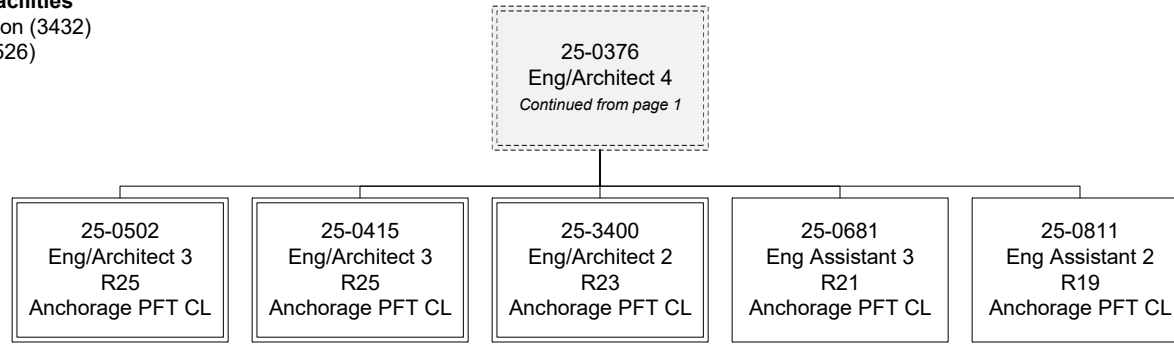


Construction

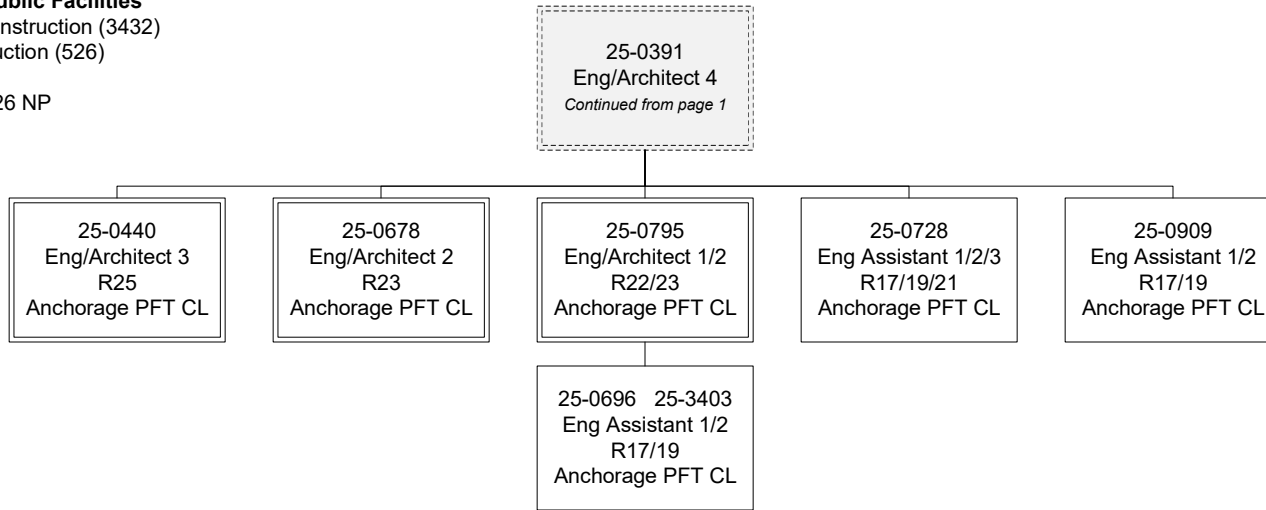


Department of Transportation & Public Facilities
Central Design, Engineering, and Construction (3432)
RDU: Design, Engineering & Construction (526)
FY2025 Governor's Budget
Position Totals: 278 PFT | 54 PPT | 26 NP

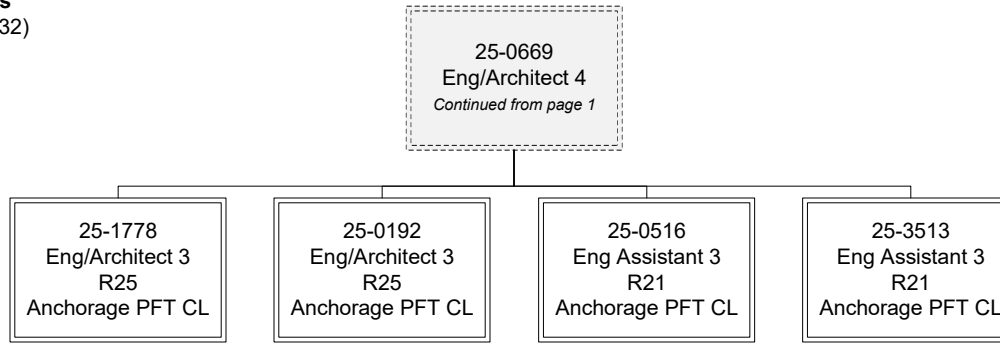
Construction



Construction



Construction



Department of Transportation & Public Facilities
 Central Design, Engineering, and Construction (3432)
 RDU: Design, Engineering & Construction (526)
 FY2025 Governor's Budget
 Position Totals: 278 PFT | 54 PPT | 26 NP

Construction ET/EA

25-0506
 25-0509 25-0514
 25-0518 25-0758
 Engineering Associate
 R21
 Anchorage PFT CL

25-0446
 25-0465 25-0508
 25-0510 25-0512
 25-0579 25-0633
 25-0674 25-0688
 25-0694 25-0759
 25-0799 25-3399
 25-3514 25-3515
 Engineering Assistant 3
 R21
 Anchorage PFT CL

25-0654 25-0684
 Engineering Assistant 2
 R19
 Anchorage PFT CL

25-0403 25-0513
 25-0517 25-0519
 25-0520 25-0522
 25-0523 25-0524
 25-0525 25-0526
 25-0527 25-0528
 25-0532 25-0533
 25-0534 25-0535
 25-0536 25-0641
 25-0642 25-0650
 25-0653 25-0693
 25-0701 25-0760
 25-0767 25-0804
 25-0807 25-0809
 25-0814 25-0815
 25-0822 25-3404
 25-3503 25-3504
 25-3505 25-3507
 25-3508 25-3509
 Eng Assistant 1/2
 R17/19
 Anchorage PFT CL

25-0539 25-0542
 25-0552 25-0553
 25-0554 25-0555
 25-0560 25-0563
 25-0564 25-0828
 25-0832 25-0833
 25-0559
 Eng Tech Jrny
 WG54
 Anchorage PPT CL

25-0540 25-0829
 Eng Tech Jrny
 WG54
 Wasilla PPT CL

25-0562 25-0570
 25-0571 25-0574
 25-0577 25-0604
 25-0606 25-0896
 Eng Tech Sbjrny 3
 WG55
 Anchorage PPT CL

25-0572 25-0836
 Eng Tech Sbjrny 3
 WG55
 Wasilla PPT CL

25-0547 25-0548
 25-0586 25-0587
 25-0592 25-0593
 25-0601 25-0870
 25-0875 25-0877
 25-0907 25-0956
 25-0957
 Eng Tech Sbjrny 2
 WG57
 Anchorage PPT CL

25-0591
 25-0594 25-0595
 Eng Tech Sbjrny 2
 WG57
 Wasilla PPT CL

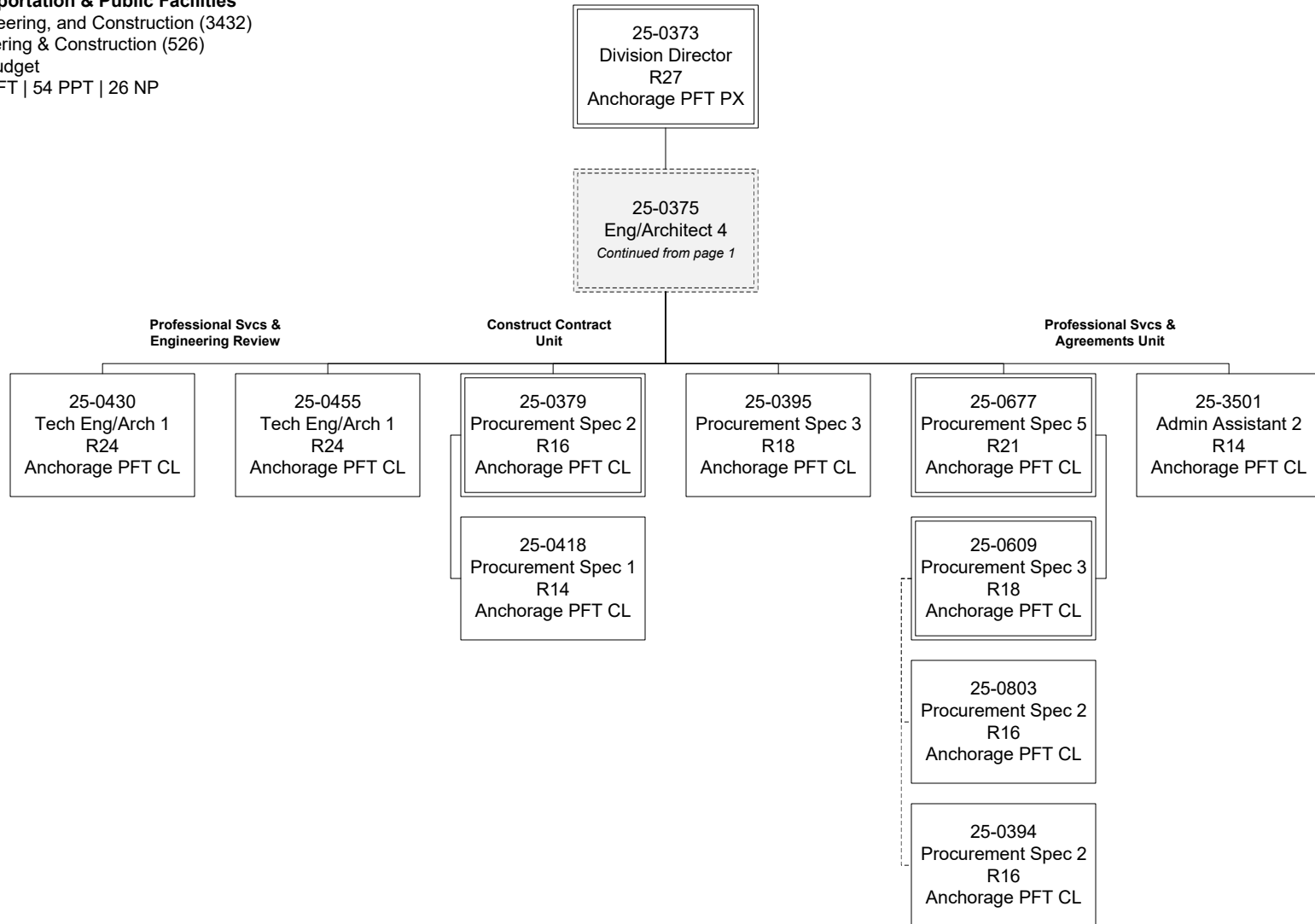
25-IN0916 25-IN0917
 25-IN0918 25-IN0919
 25-IN0920 25-IN0921
 25-IN0922 25-IN0925
 Eng Tech Sbjrny 1
 WG59
 Anchorage NP CL

25-IN0923 25-IN0924
 Eng Tech Sbjrny 2
 WG57
 Anchorage NP CL

25-N09023 25-N09085
 25-N09087 25-N09088
 25-N09089 25-N09090
 Eng Tech Sbjrny 1
 WG59
 Anchorage NP CL

25-N09022
 25-N09024 25-N09091
 Eng Tech Sbjrny 1
 WG59
 Wasilla NP CL

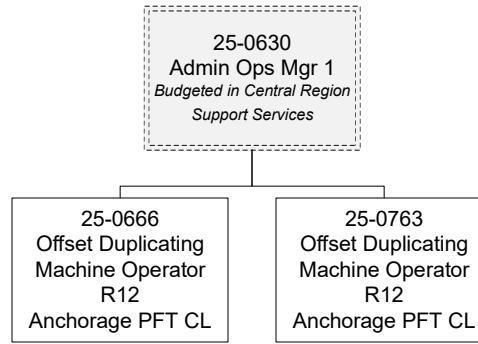
Contracts



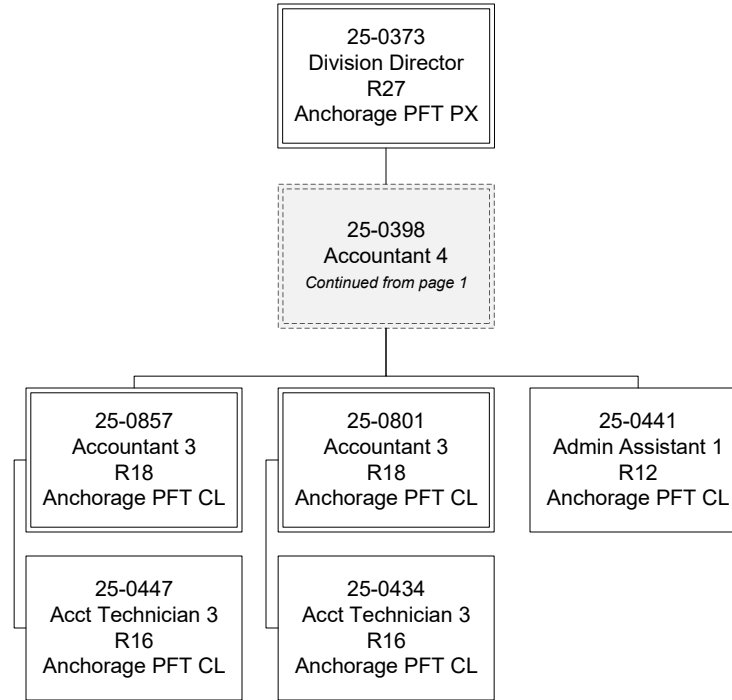
*Shared staff between PSA Unit and Construction Contract Unit.

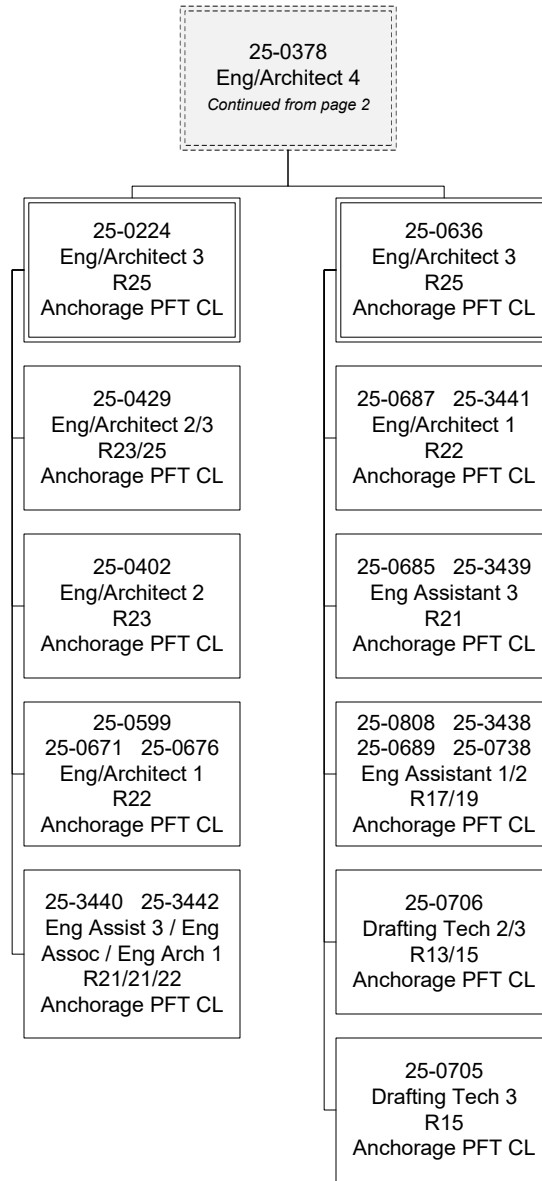
Department of Transportation & Public Facilities
Central Design, Engineering, and Construction (3432)
RDU: Design, Engineering & Construction (526)
FY2025 Governor's Budget
Position Totals: 278 PFT | 54 PPT | 26 NP

Graphics



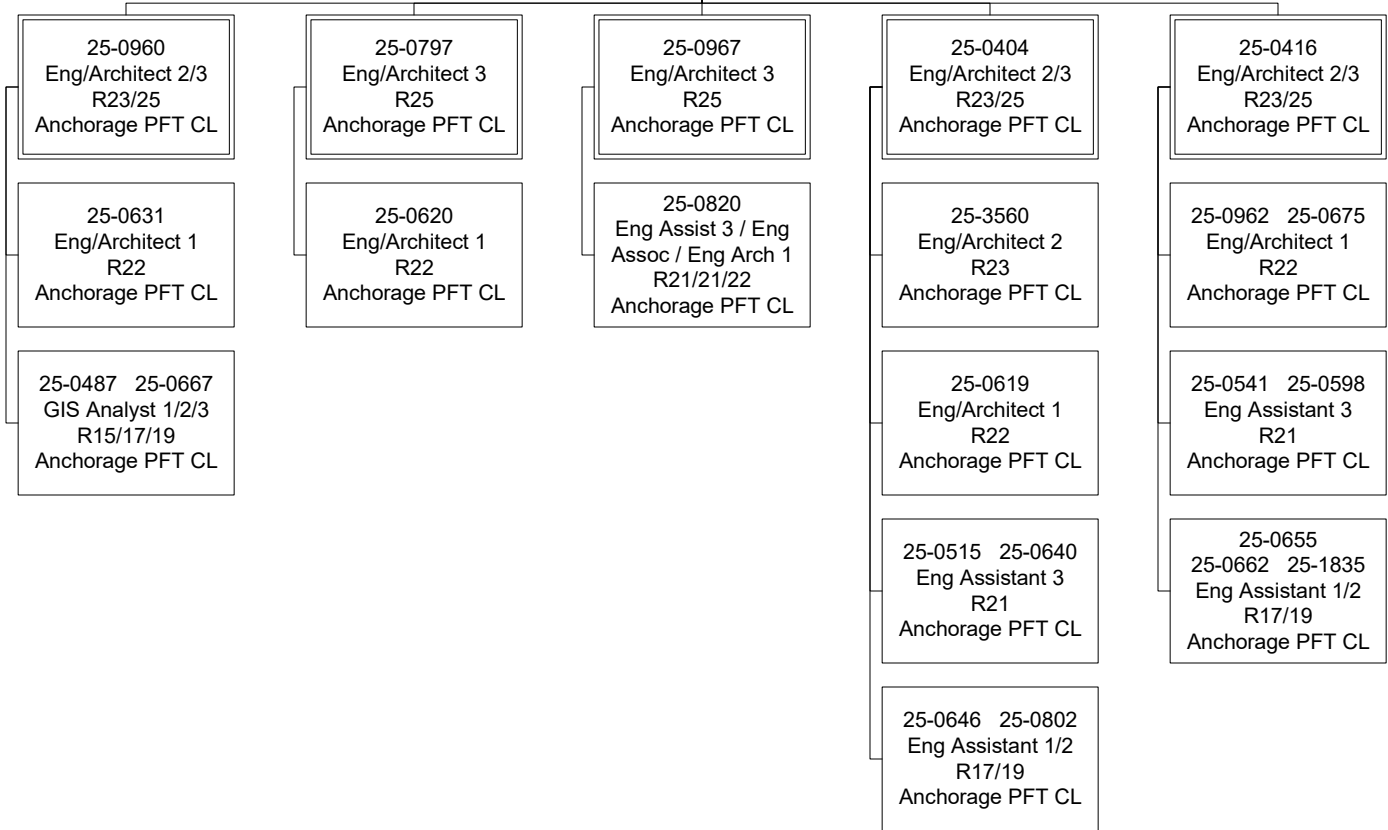
Program Management





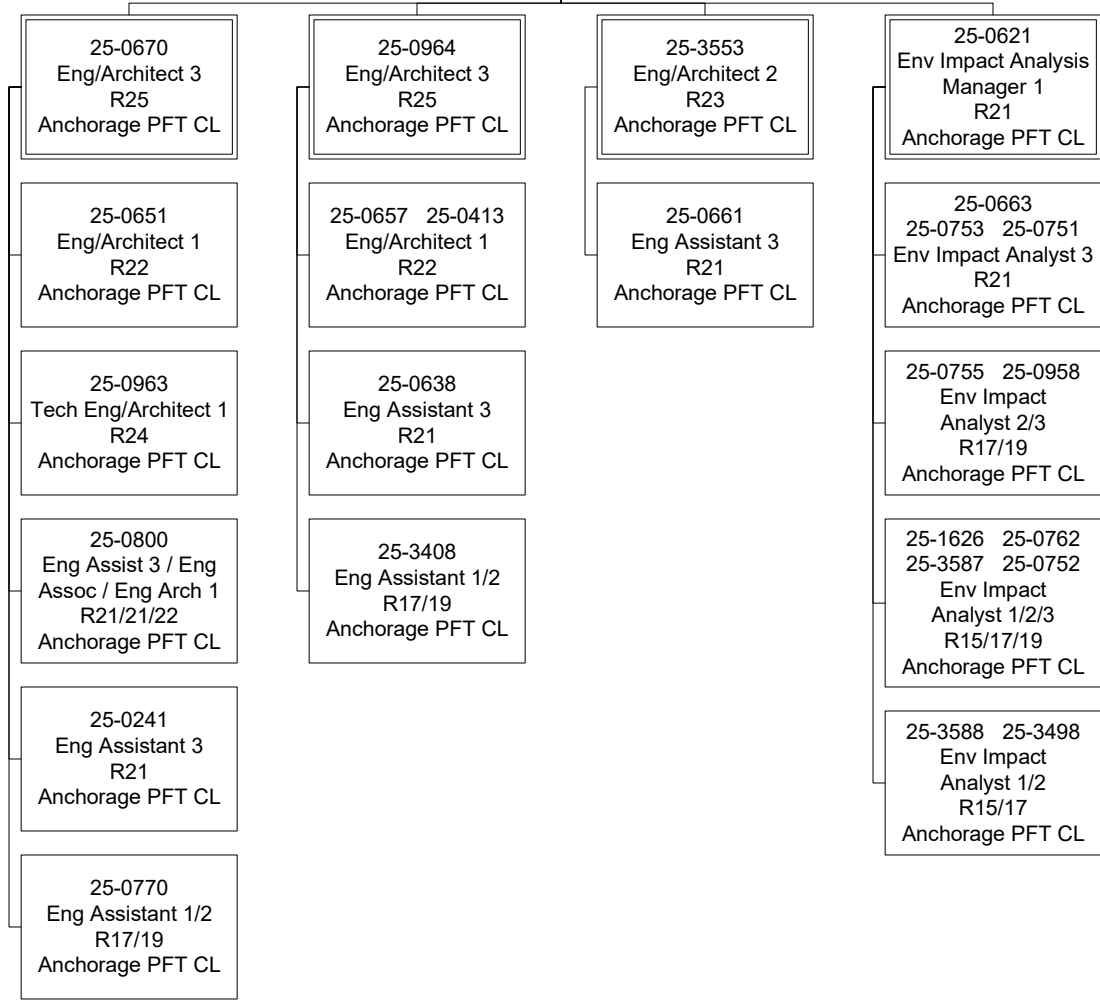
25-0389
Eng/Architect 4
Continued from page 2

Highway Design



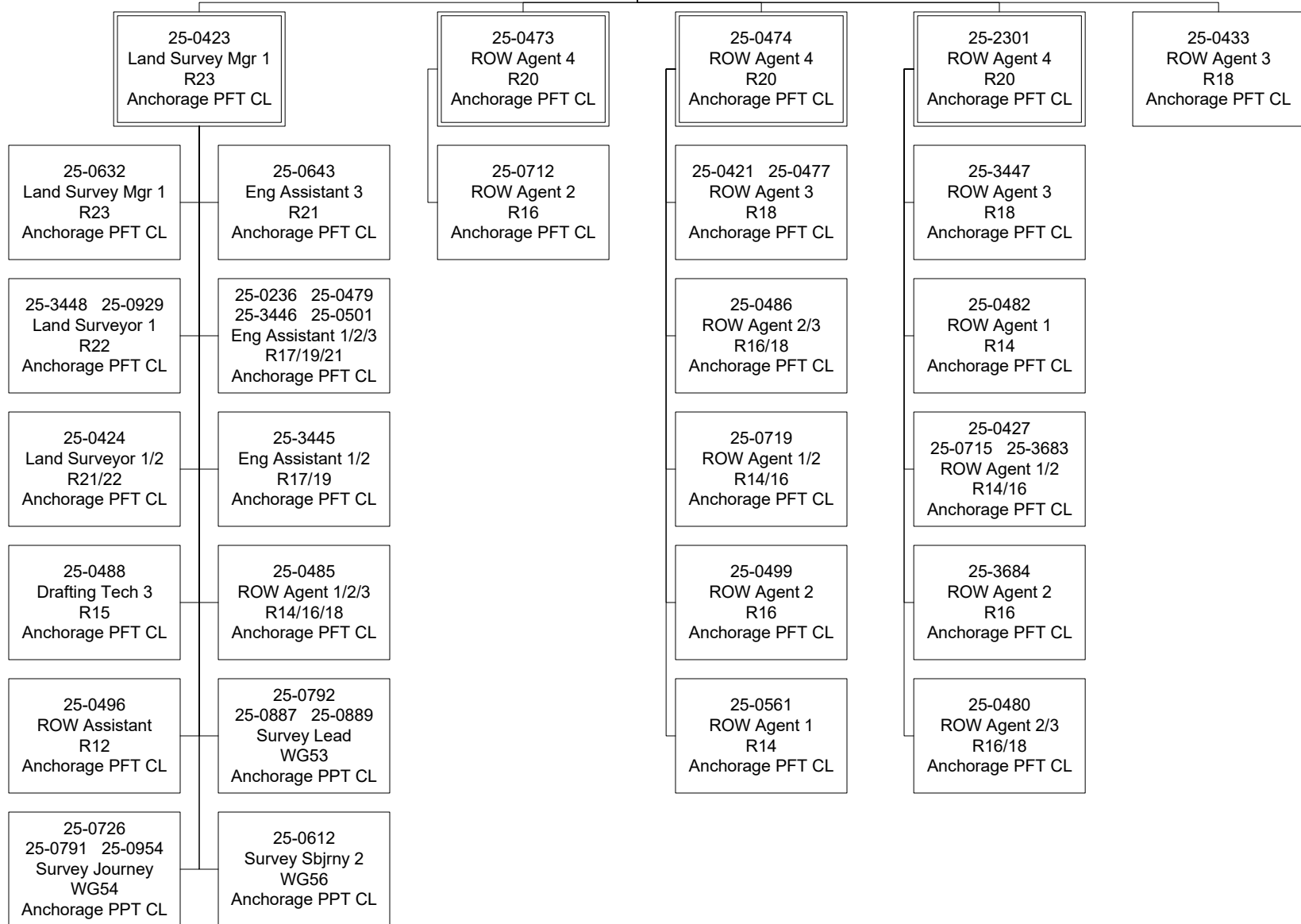
Preliminary Design

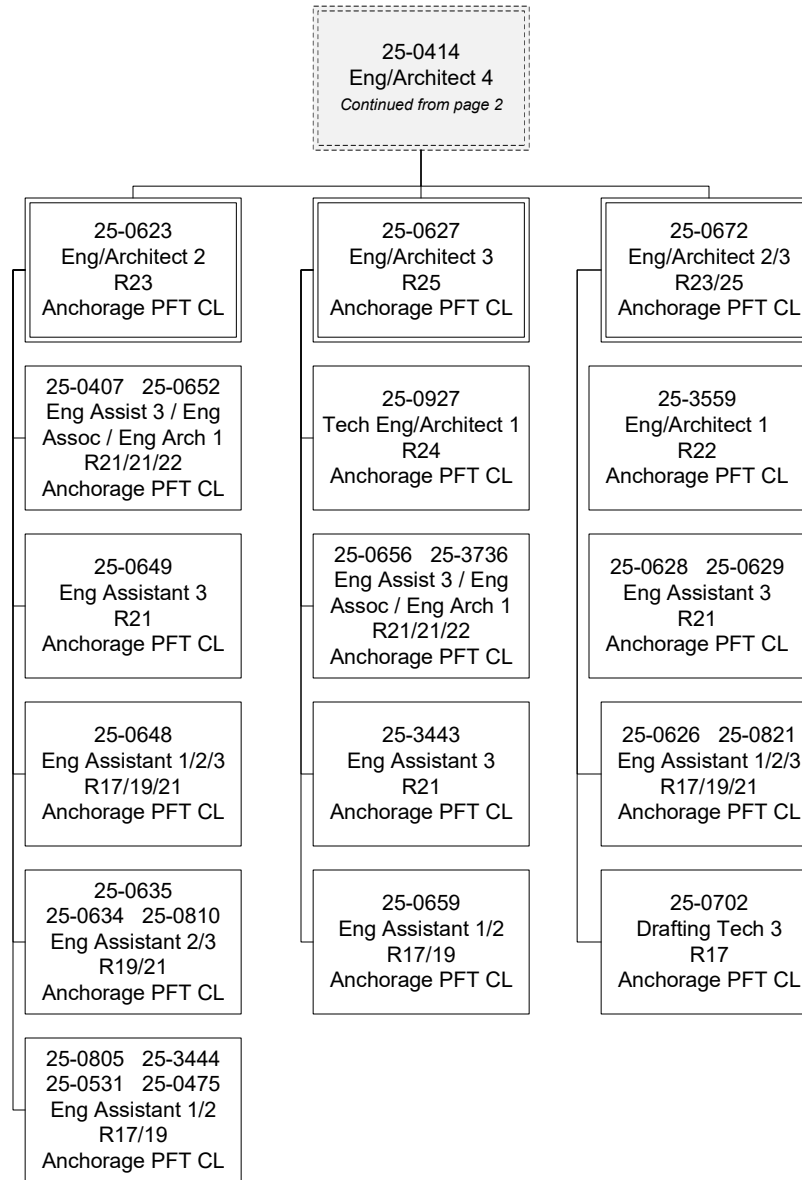
25-0435
 Eng/Architect 4
Continued from page 2



25-0771
 Eng/Architect 4
Continued from page 2

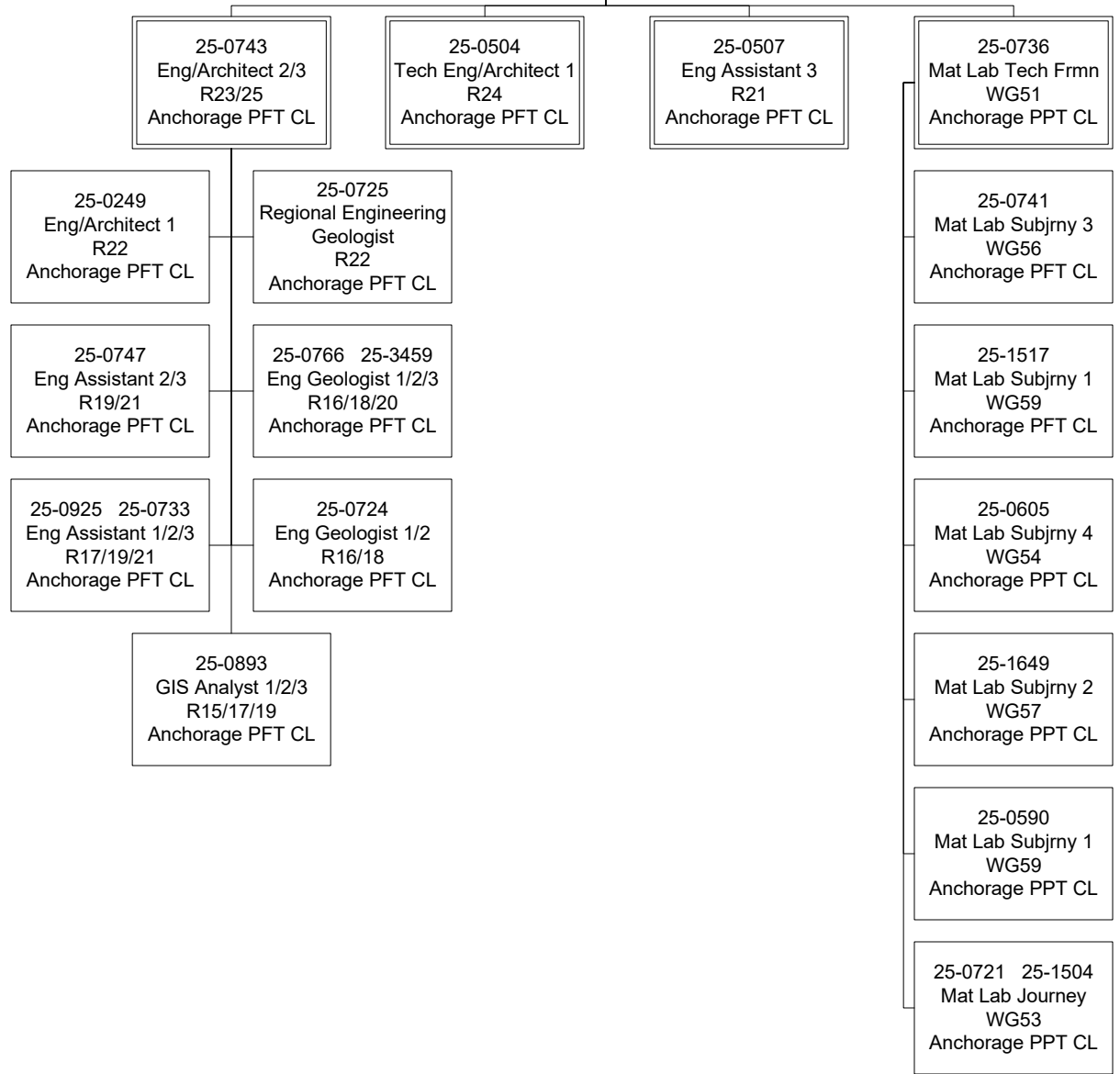
Right-of-Way



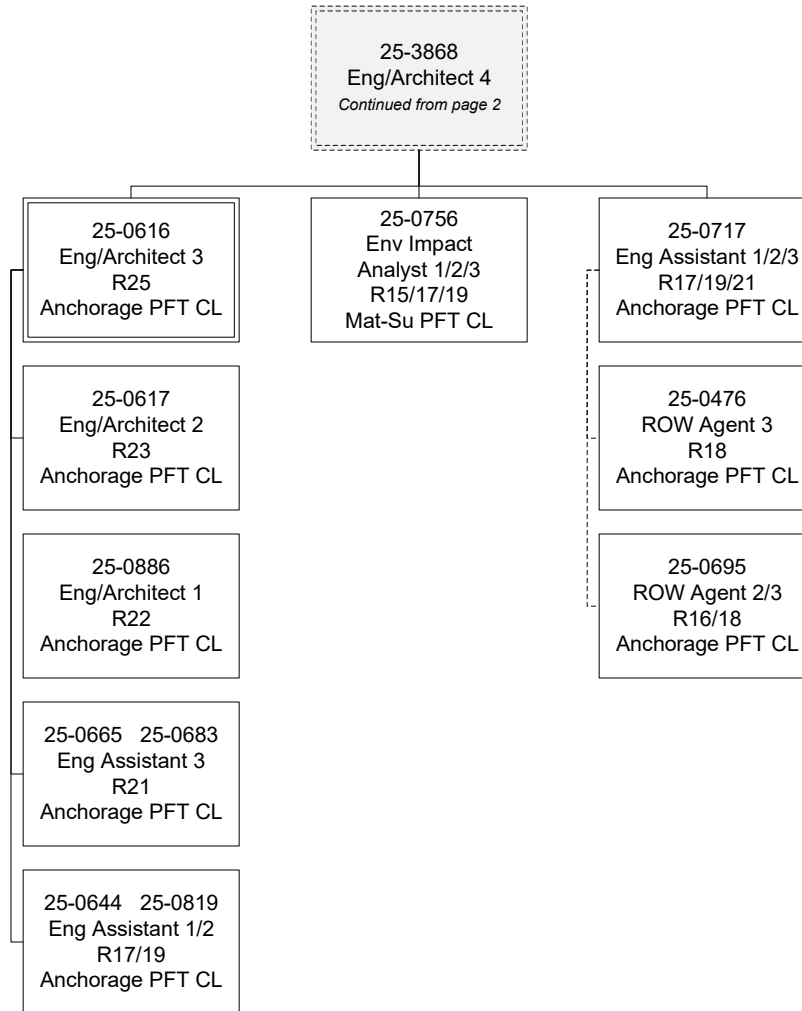


25-0387
 Eng/Architect 4
Continued from page 2

Materials



Mat-Su Group



Department of Transportation & Public Facilities
Central Design, Engineering, and Construction (3432)
RDU: Design, Engineering & Construction (526)
FY2025 Governor's Budget
Position Totals: 278 PFT | 54 PPT | 26 NP

Design Interns

25-IN1436	25-IN1437
25-IN1438	25-IN1441
25-IN1215	25-IN1503
College Intern 1/2/3/4	
R8/9/10/12	
Anchorage NP CL	

Administration

