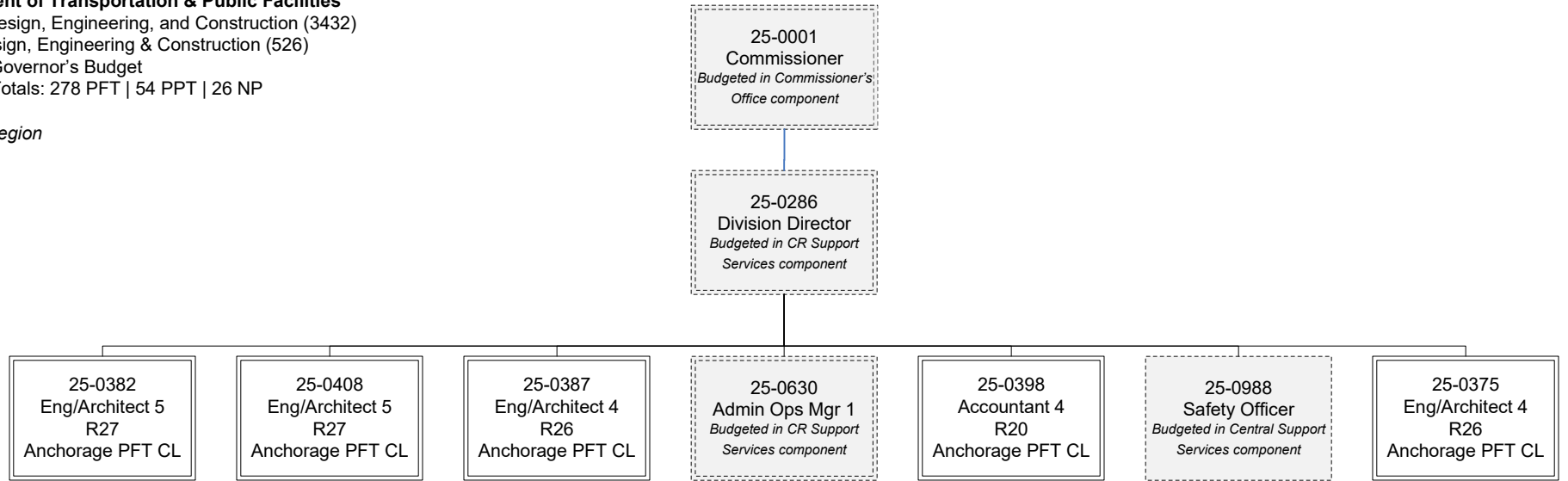
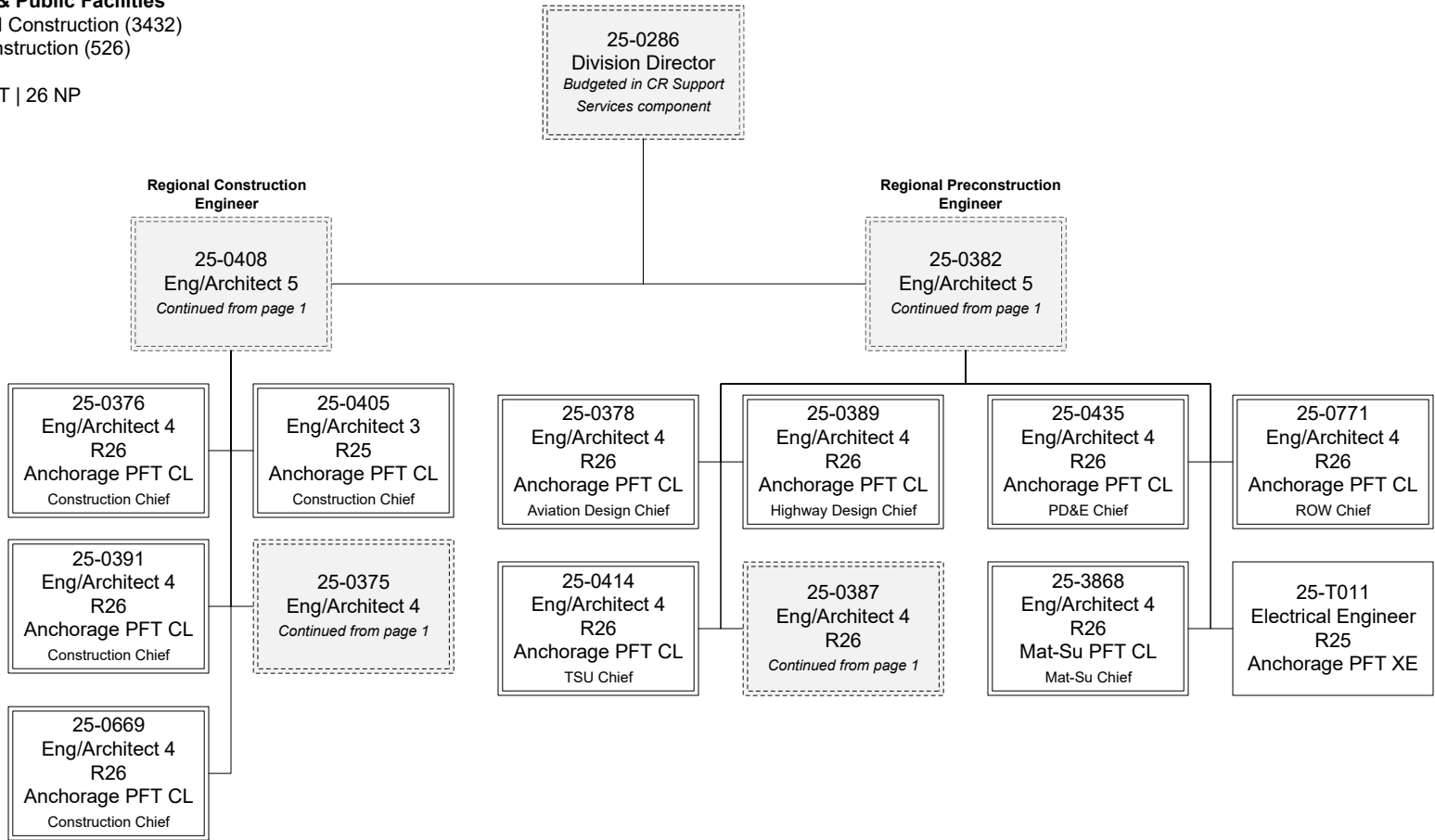


Department of Transportation & Public Facilities
Central Design, Engineering, and Construction (3432)
RDU: Design, Engineering & Construction (526)
FY2025 Governor's Budget
Position Totals: 278 PFT | 54 PPT | 26 NP

Central Region

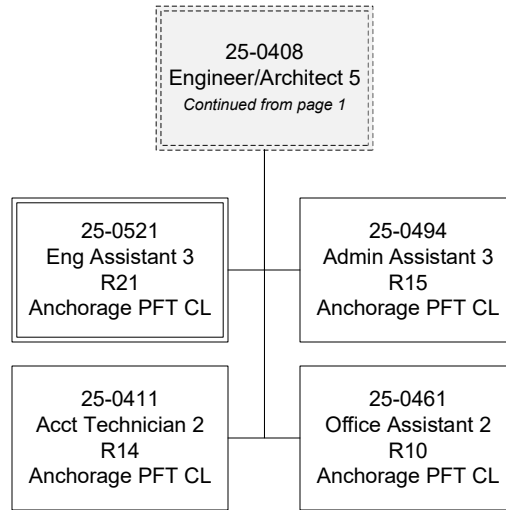


Central Region Leads

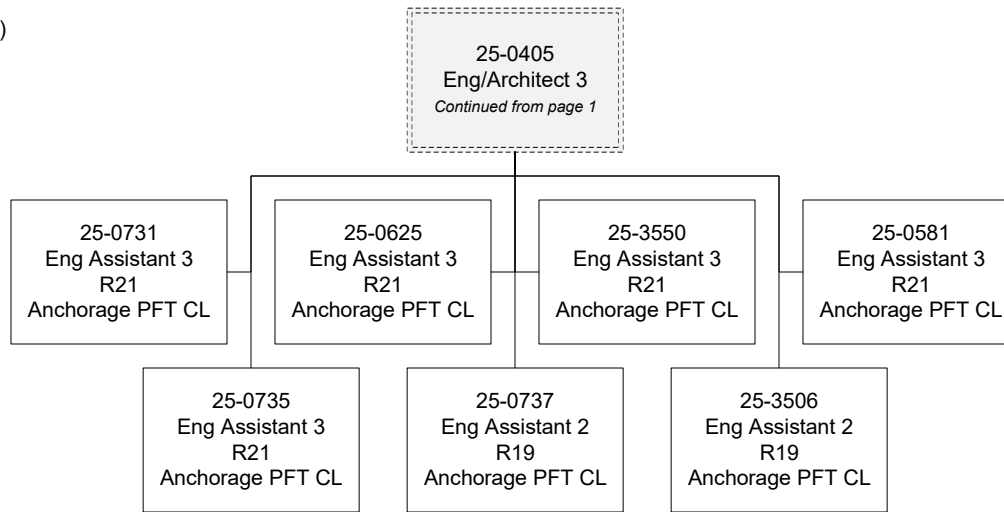


Department of Transportation & Public Facilities
Central Design, Engineering, and Construction (3432)
RDU: Design, Engineering & Construction (526)
FY2025 Governor's Budget
Position Totals: 278 PFT | 54 PPT | 26 NP

Construction

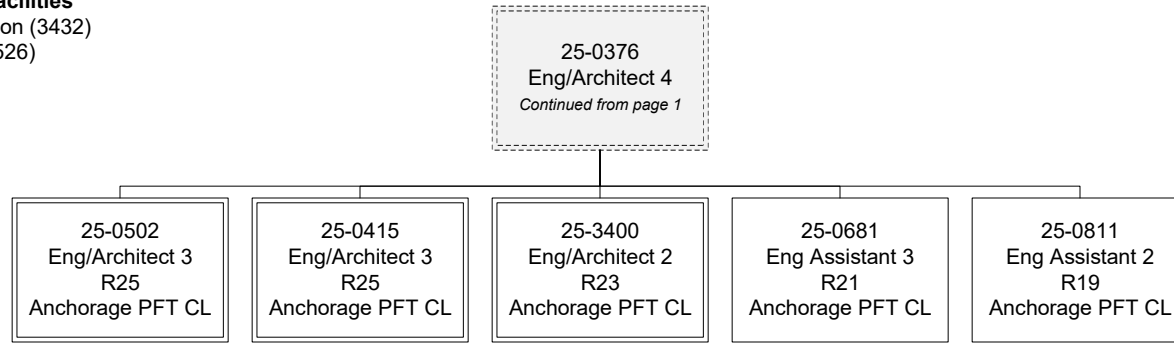


Construction

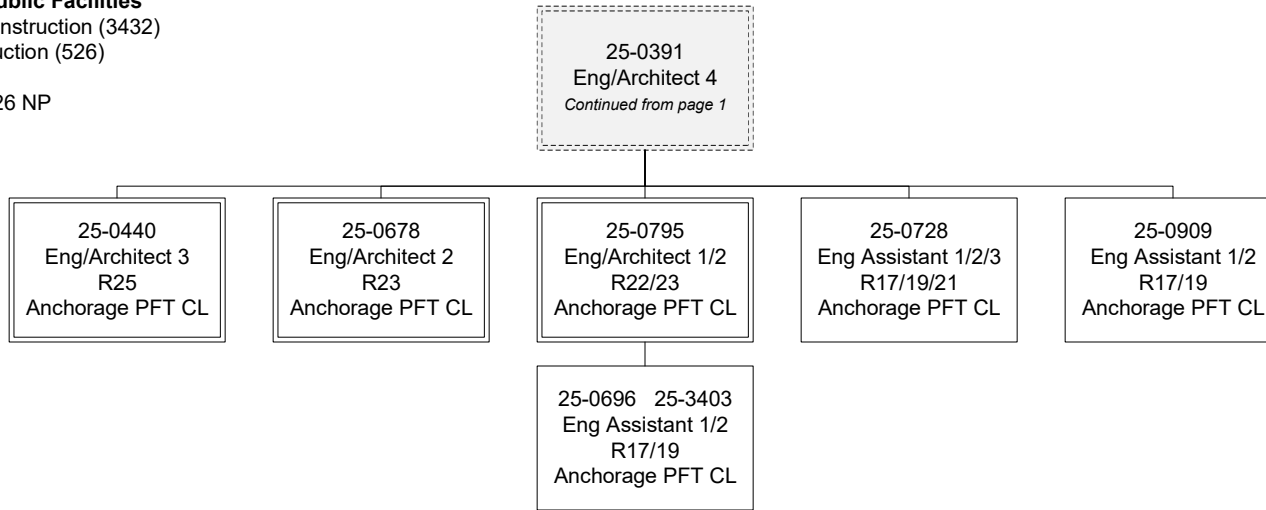


Department of Transportation & Public Facilities
Central Design, Engineering, and Construction (3432)
RDU: Design, Engineering & Construction (526)
FY2025 Governor's Budget
Position Totals: 278 PFT | 54 PPT | 26 NP

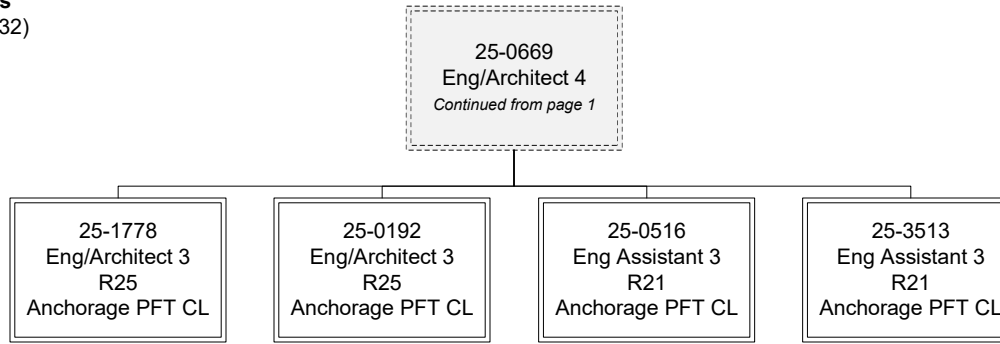
Construction



Construction



Construction



Department of Transportation & Public Facilities
 Central Design, Engineering, and Construction (3432)
 RDU: Design, Engineering & Construction (526)
 FY2025 Governor's Budget
 Position Totals: 278 PFT | 54 PPT | 26 NP

Construction ET/EA

25-0506
 25-0509 25-0514
 25-0518 25-0758
 Engineering Associate
 R21
 Anchorage PFT CL

25-0446
 25-0465 25-0508
 25-0510 25-0512
 25-0579 25-0633
 25-0674 25-0688
 25-0694 25-0759
 25-0799 25-3399
 25-3514 25-3515
 Engineering Assistant 3
 R21
 Anchorage PFT CL

25-0654 25-0684
 Engineering Assistant 2
 R19
 Anchorage PFT CL

25-0403 25-0513
 25-0517 25-0519
 25-0520 25-0522
 25-0523 25-0524
 25-0525 25-0526
 25-0527 25-0528
 25-0532 25-0533
 25-0534 25-0535
 25-0536 25-0641
 25-0642 25-0650
 25-0653 25-0693
 25-0701 25-0760
 25-0767 25-0804
 25-0807 25-0809
 25-0814 25-0815
 25-0822 25-3404
 25-3503 25-3504
 25-3505 25-3507
 25-3508 25-3509
 Eng Assistant 1/2
 R17/19
 Anchorage PFT CL

25-0539 25-0542
 25-0552 25-0553
 25-0554 25-0555
 25-0560 25-0563
 25-0564 25-0828
 25-0832 25-0833
 25-0559
 Eng Tech Jrny
 WG54
 Anchorage PPT CL

25-0540 25-0829
 Eng Tech Jrny
 WG54
 Wasilla PPT CL

25-0562 25-0570
 25-0571 25-0574
 25-0577 25-0604
 25-0606 25-0896
 Eng Tech Sbjrny 3
 WG55
 Anchorage PPT CL

25-0572 25-0836
 Eng Tech Sbjrny 3
 WG55
 Wasilla PPT CL

25-0547 25-0548
 25-0586 25-0587
 25-0592 25-0593
 25-0601 25-0870
 25-0875 25-0877
 25-0907 25-0956
 25-0957
 Eng Tech Sbjrny 2
 WG57
 Anchorage PPT CL

25-0591
 25-0594 25-0595
 Eng Tech Sbjrny 2
 WG57
 Wasilla PPT CL

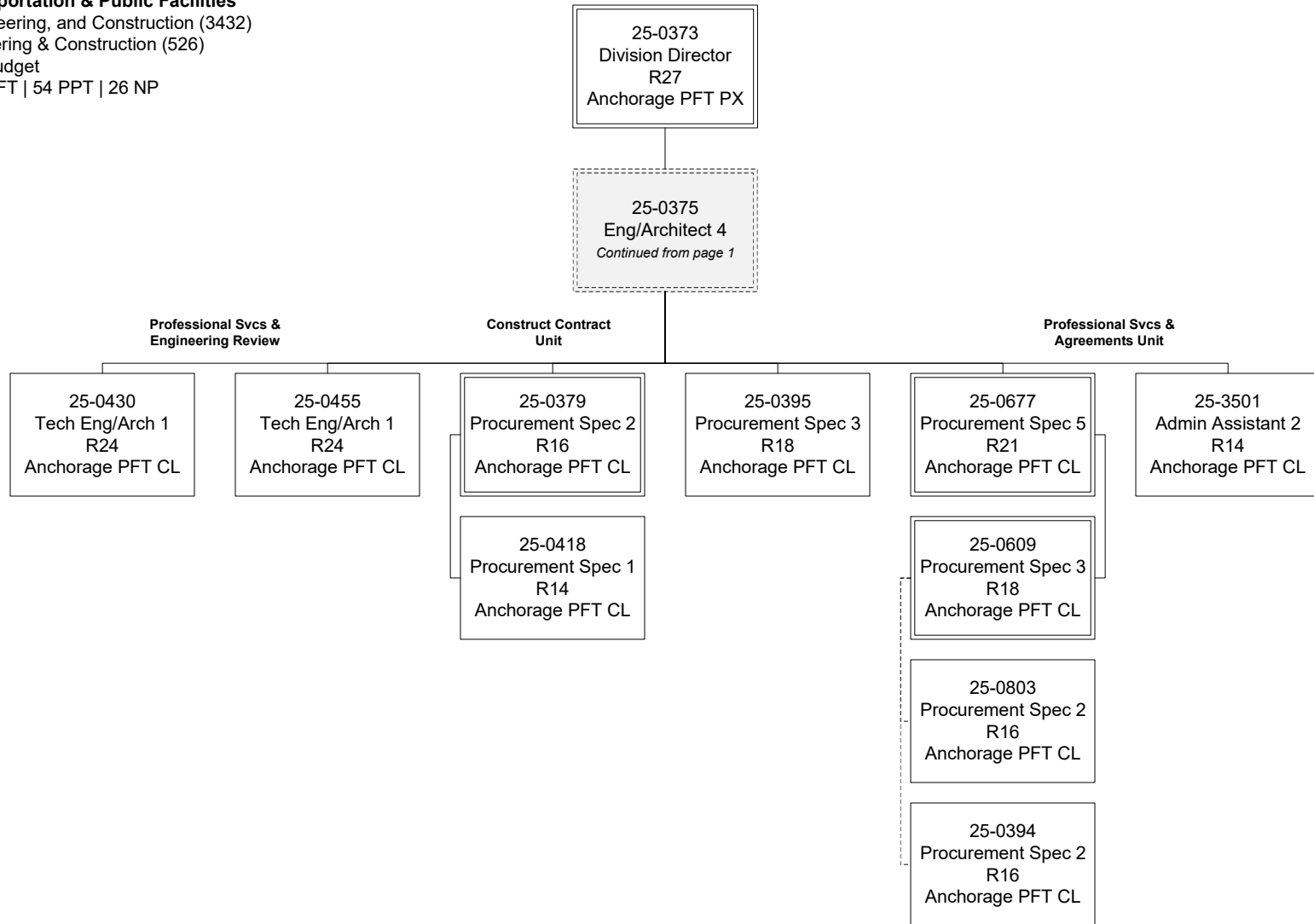
25-IN0916 25-IN0917
 25-IN0918 25-IN0919
 25-IN0920 25-IN0921
 25-IN0922 25-IN0925
 Eng Tech Sbjrny 1
 WG59
 Anchorage NP CL

25-IN0923 25-IN0924
 Eng Tech Sbjrny 2
 WG57
 Anchorage NP CL

25-N09023 25-N09085
 25-N09087 25-N09088
 25-N09089 25-N09090
 Eng Tech Sbjrny 1
 WG59
 Anchorage NP CL

25-N09022
 25-N09024 25-N09091
 Eng Tech Sbjrny 1
 WG59
 Wasilla NP CL

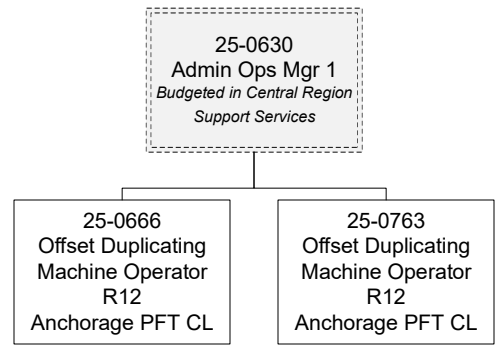
Contracts



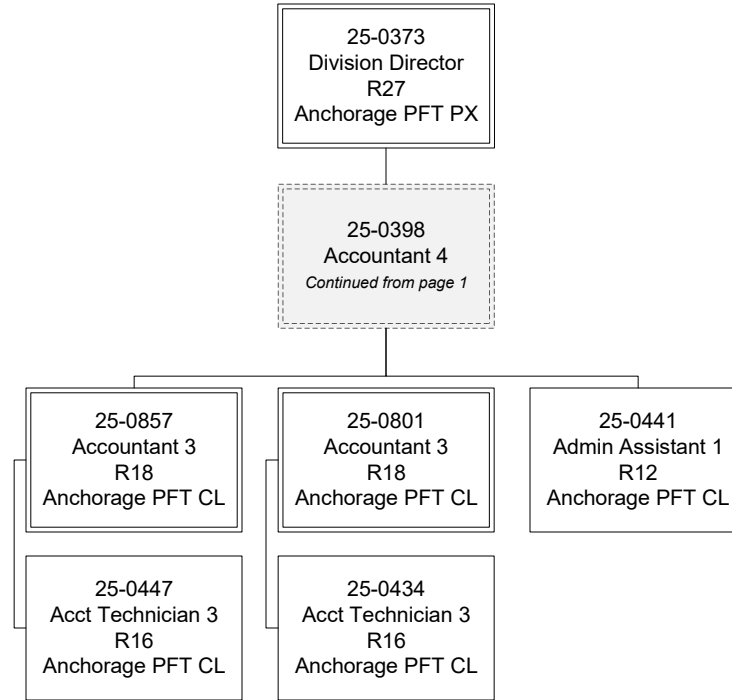
*Shared staff between PSA Unit and Construction Contract Unit.

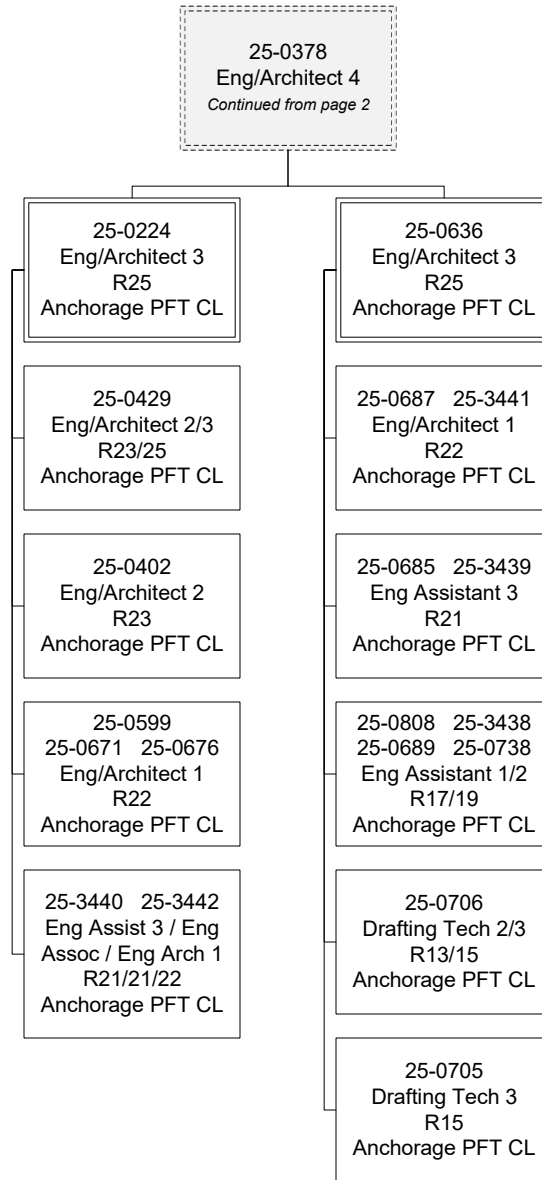
Department of Transportation & Public Facilities
Central Design, Engineering, and Construction (3432)
RDU: Design, Engineering & Construction (526)
FY2025 Governor's Budget
Position Totals: 278 PFT | 54 PPT | 26 NP

Graphics



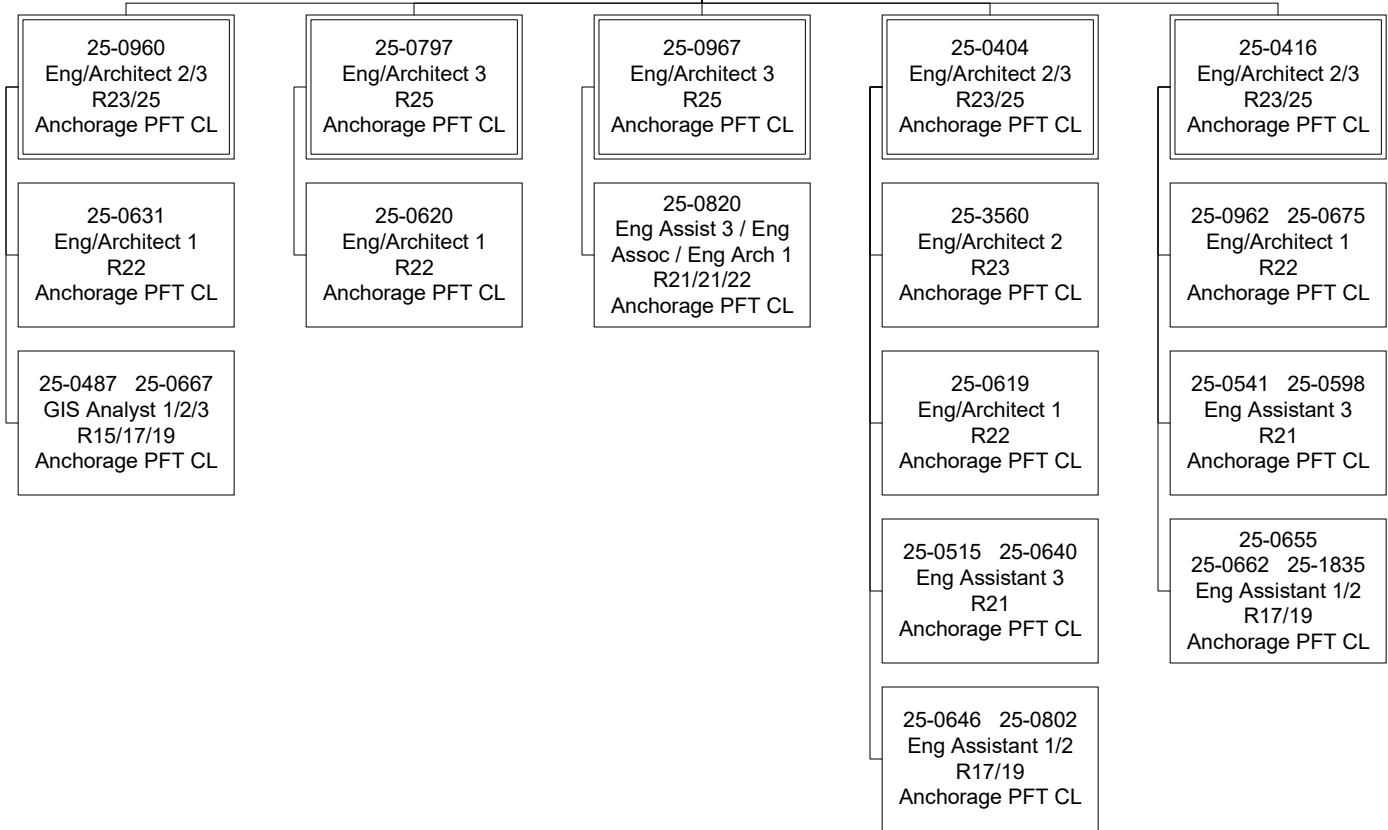
Program Management





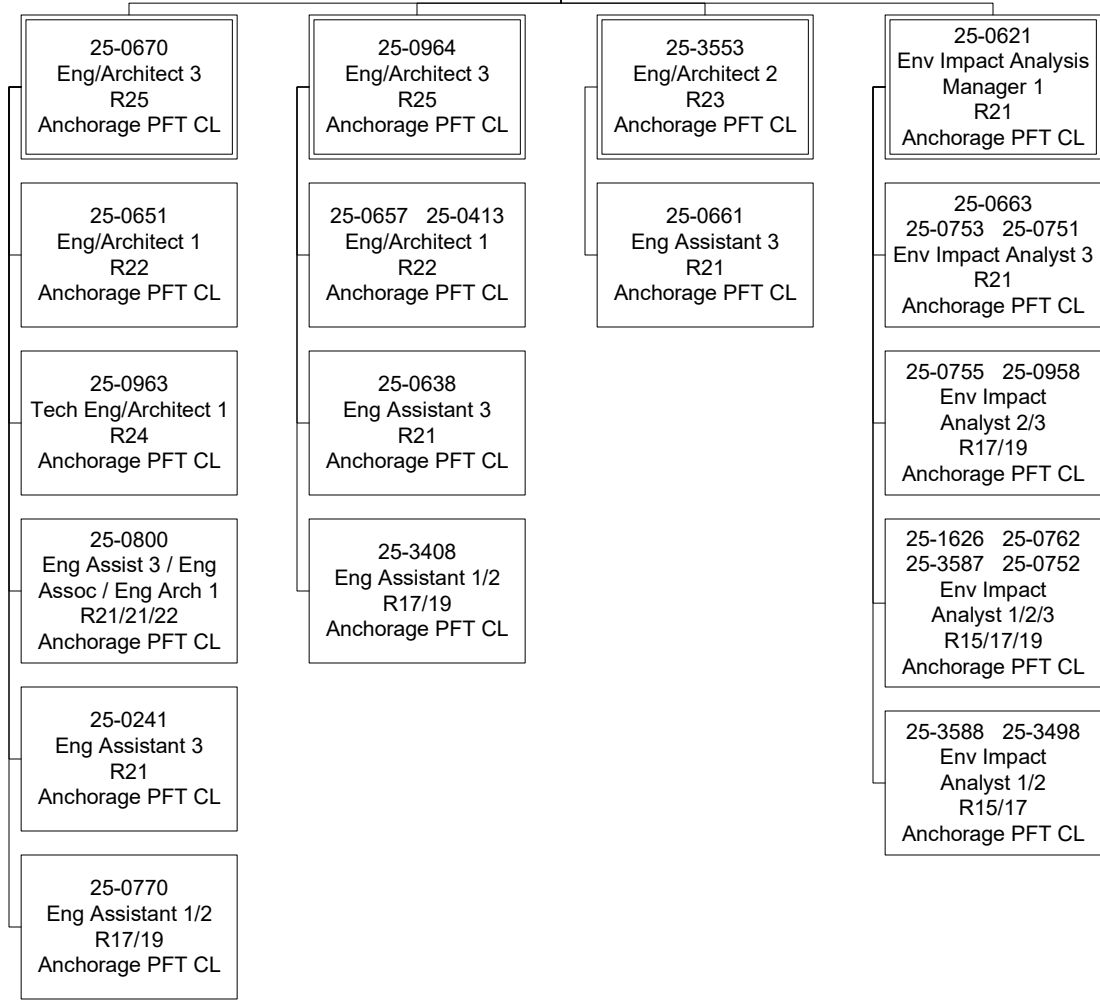
25-0389
Eng/Architect 4
Continued from page 2

Highway Design



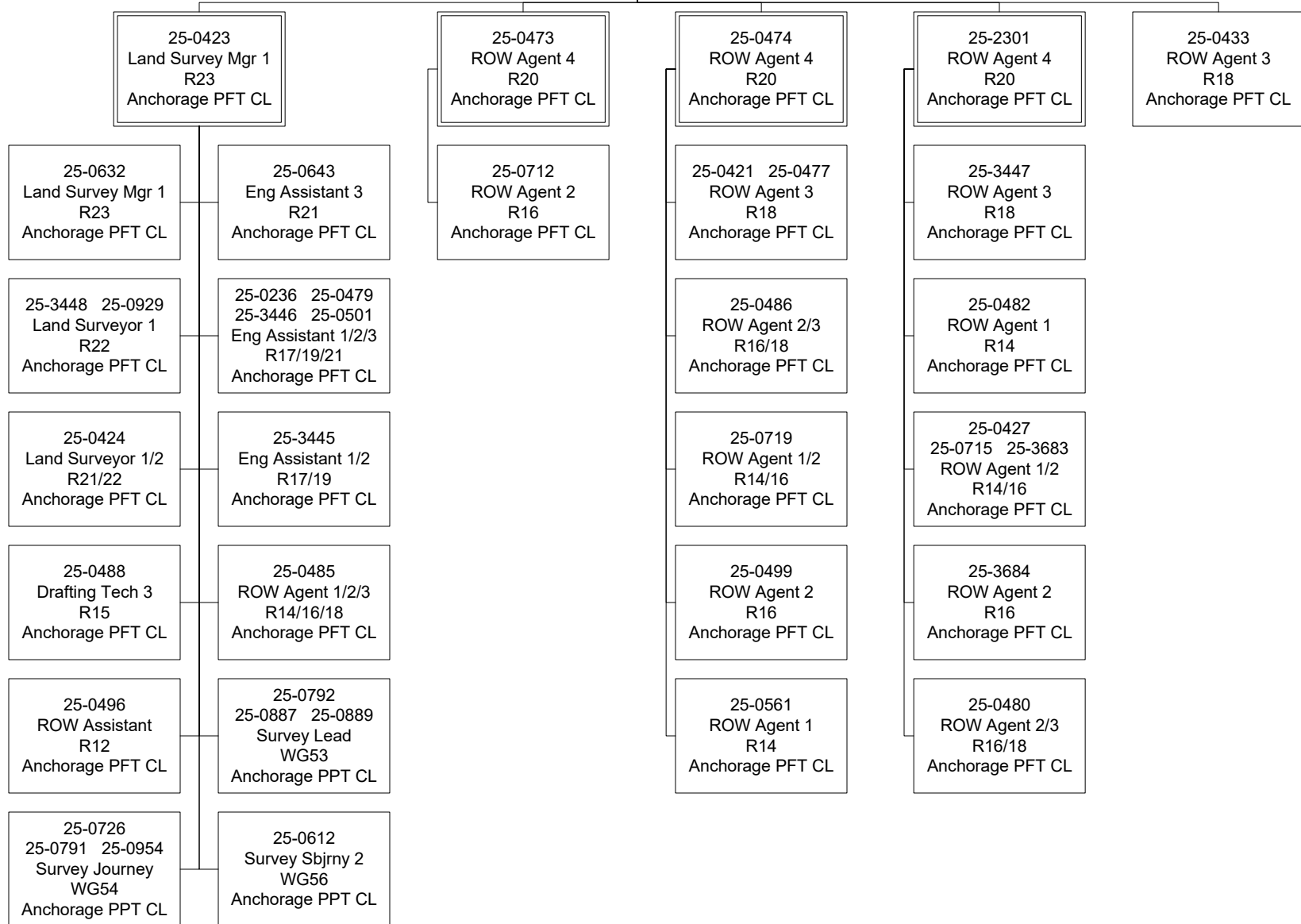
Preliminary Design

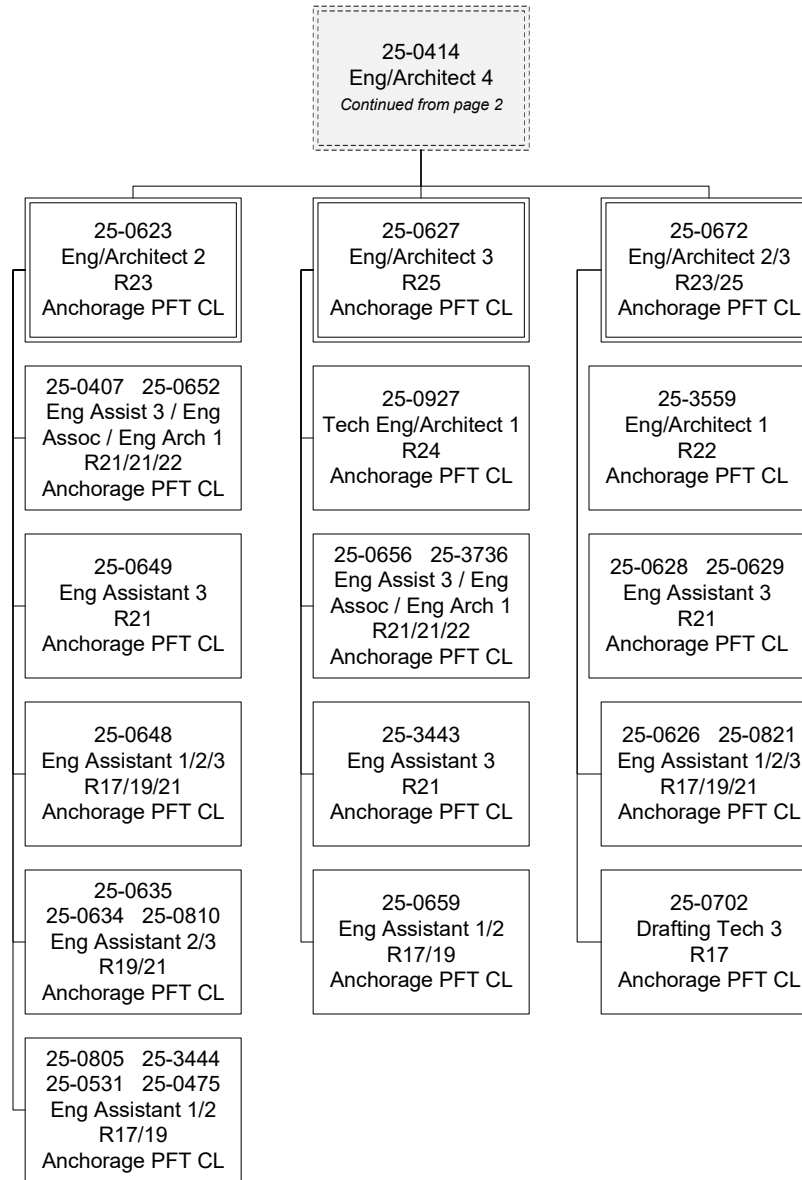
25-0435
 Eng/Architect 4
Continued from page 2



25-0771
 Eng/Architect 4
Continued from page 2

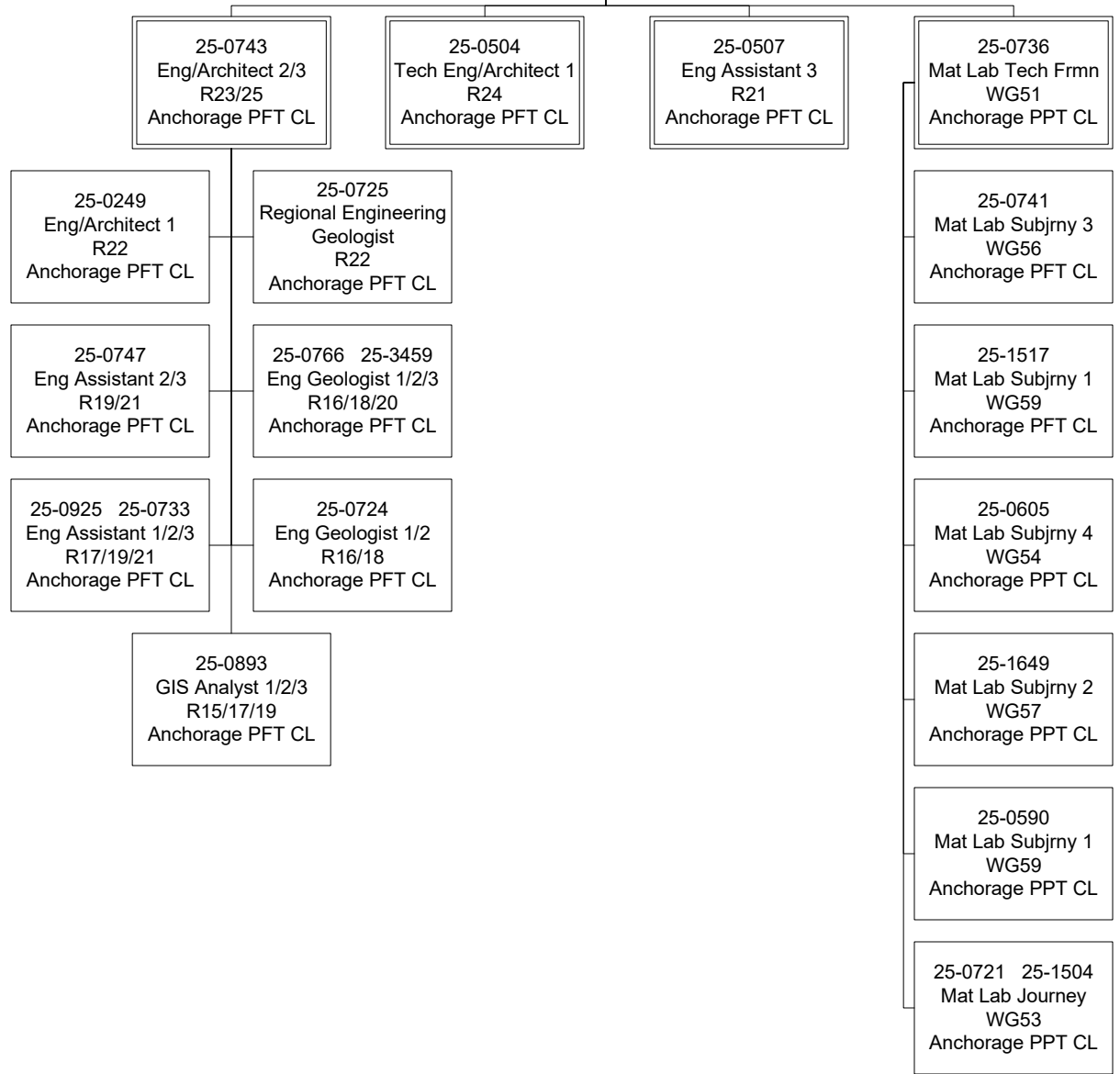
Right-of-Way



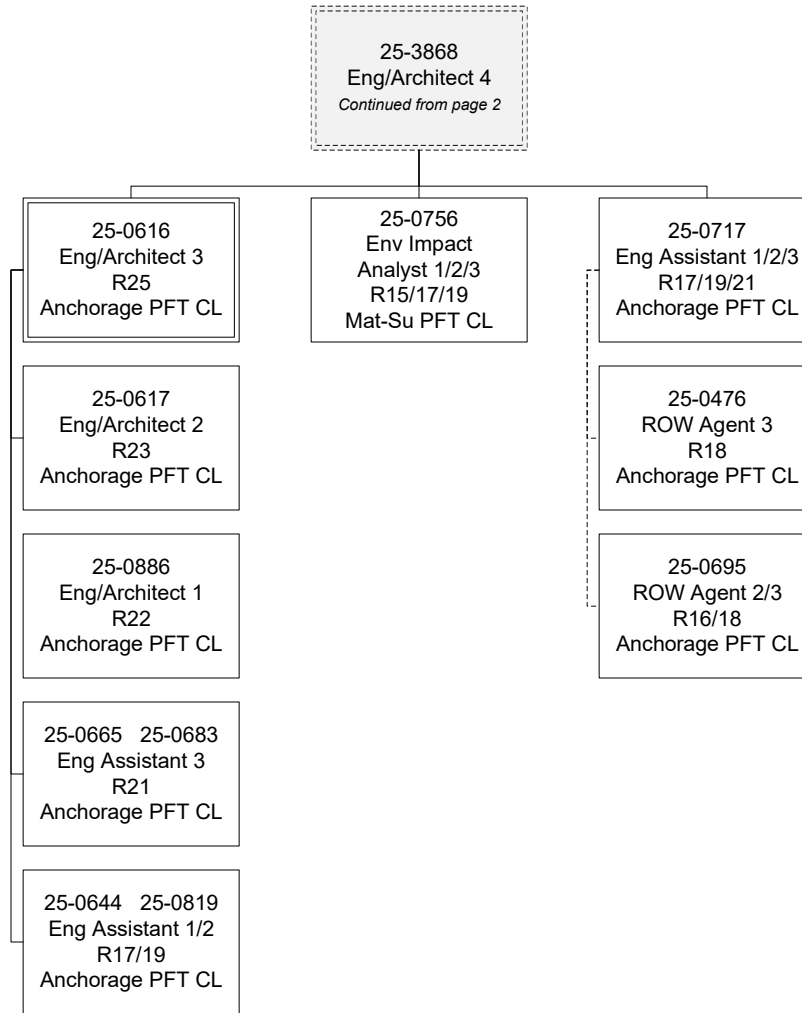


25-0387
 Eng/Architect 4
Continued from page 2

Materials



Mat-Su Group



Department of Transportation & Public Facilities
Central Design, Engineering, and Construction (3432)
RDU: Design, Engineering & Construction (526)
FY2025 Governor's Budget
Position Totals: 278 PFT | 54 PPT | 26 NP

Design Interns

25-IN1436 25-IN1437
25-IN1438 25-IN1441
25-IN1215 25-IN1503

College Intern 1/2/3/4
R8/9/10/12
Anchorage NP CL

Administration

