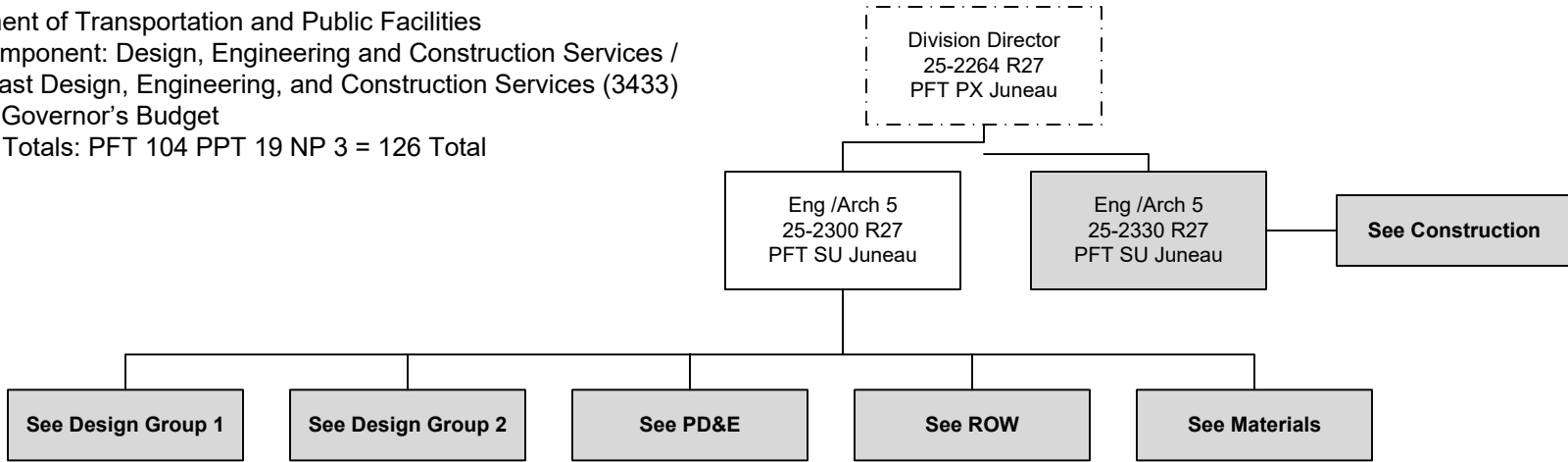


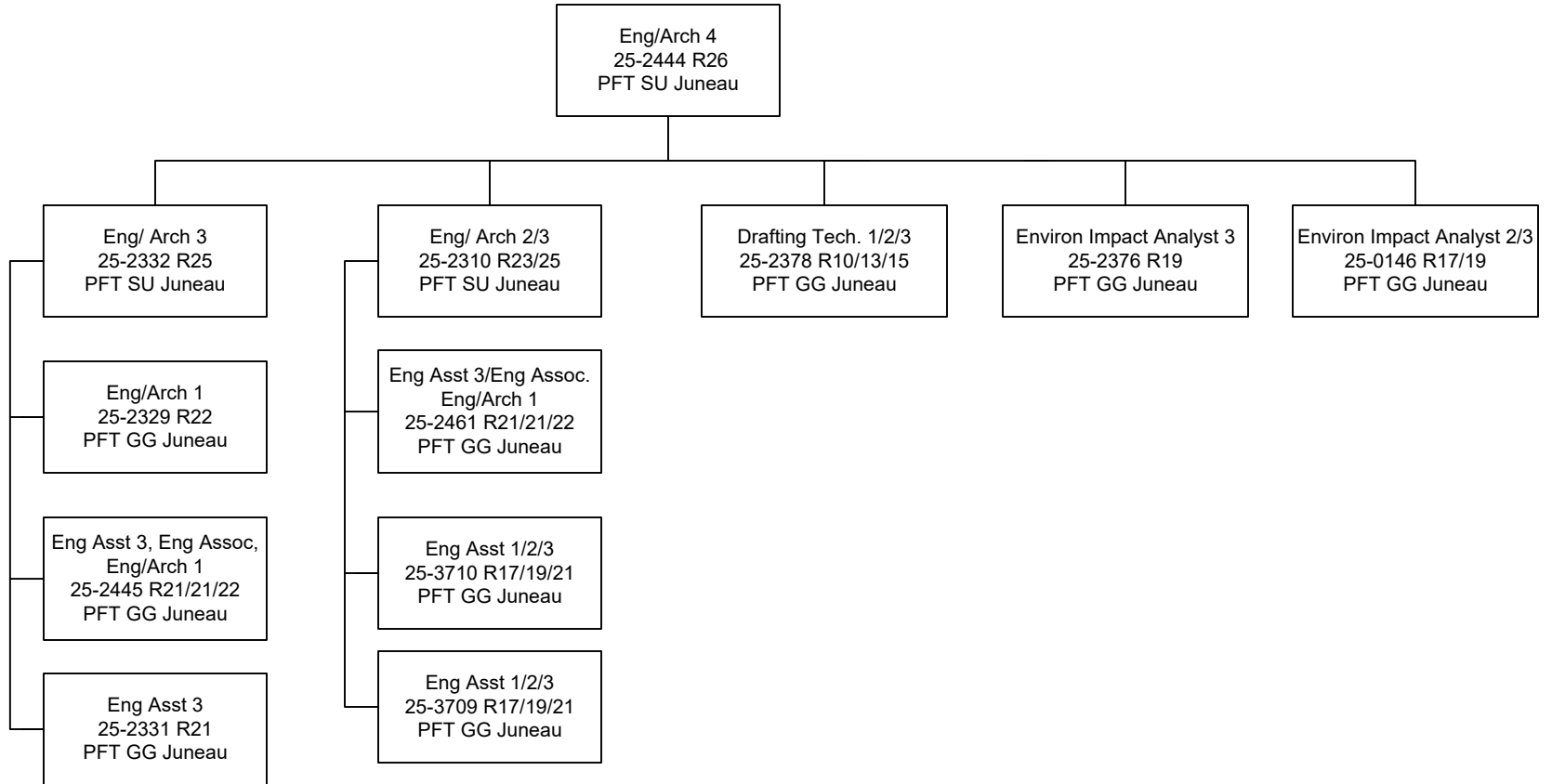
Department of Transportation and Public Facilities
RDU/Component: Design, Engineering and Construction Services /
Southcoast Design, Engineering, and Construction Services (3433)
FY2025 Governor's Budget
Position Totals: PFT 104 PPT 19 NP 3 = 126 Total



**Budgeted in another component

Department of Transportation and Public Facilities
RDU/Component: Design, Engineering and Construction Services /
Southcoast Design, Engineering, and Construction Services (3433)
FY2025 Governor's Budget
Position Totals: PFT 104 PPT 19 NP 3 = 126 Total

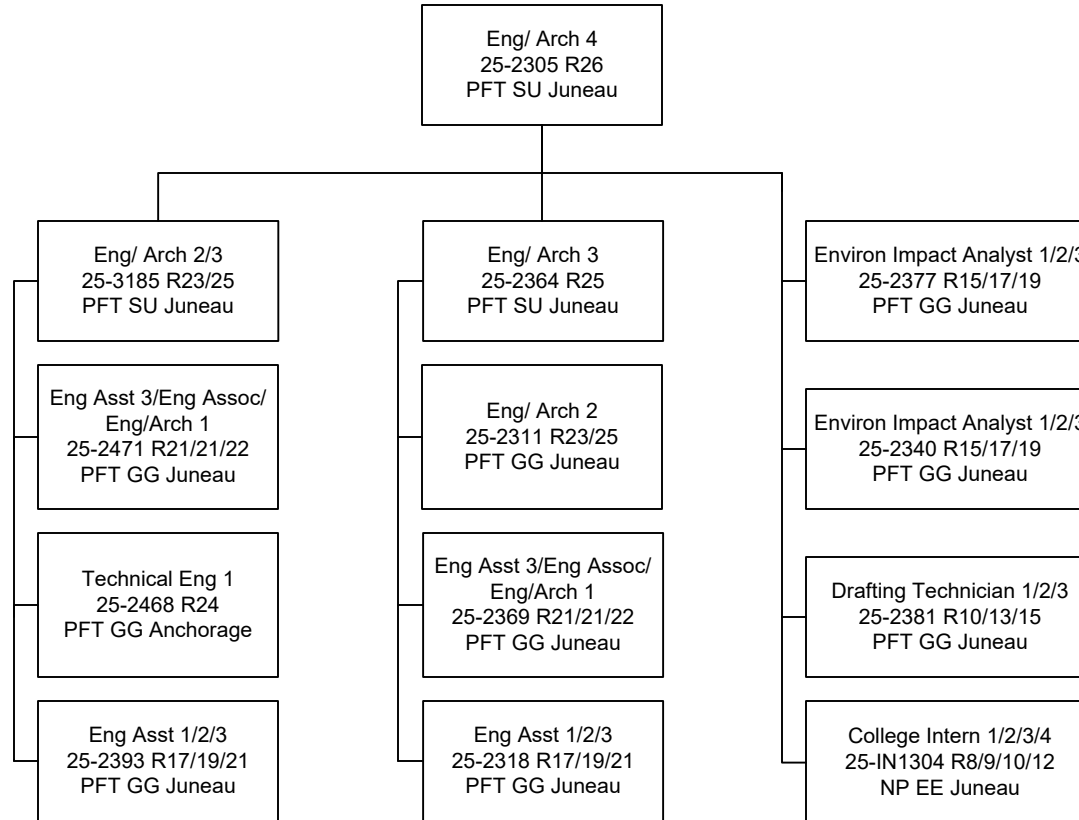
DESIGN GROUP 1



**Budgeted in another component

Department of Transportation and Public Facilities
 RDU/Component: Design, Engineering and Construction Services /
 Southcoast Design, Engineering, and Construction Services (3433)
 FY2025 Governor's Budget
 Position Totals: PFT 104 PPT 19 NP 3 = 126 Total

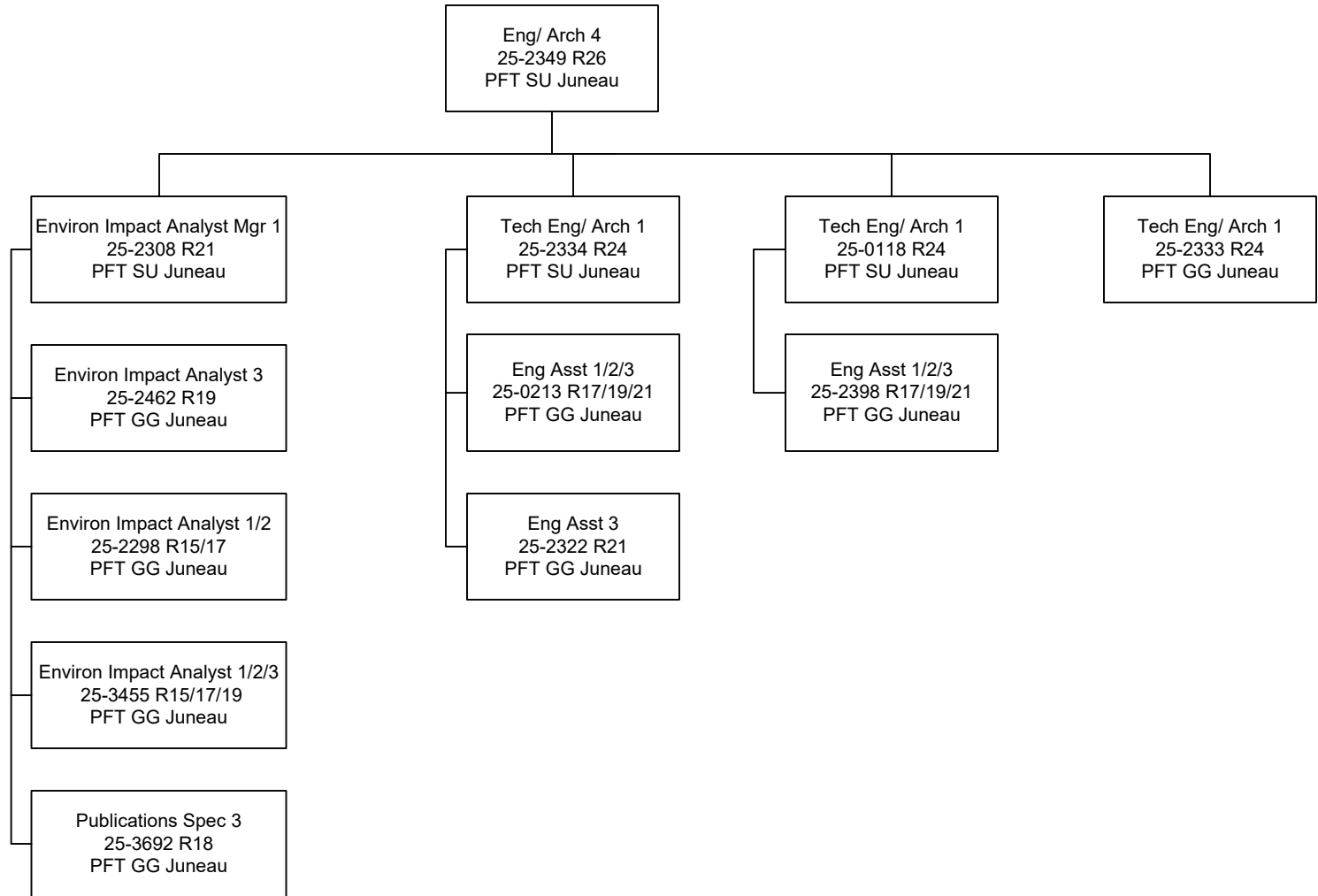
DESIGN GROUP 2



**Budgeted in another component

Department of Transportation and Public Facilities
 RDU/Component: Design, Engineering and Construction Services /
 Southcoast Design, Engineering, and Construction Services (3433)
 FY2025 Governor's Budget
 Position Totals: PFT 104 PPT 19 NP 3 = 126 Total

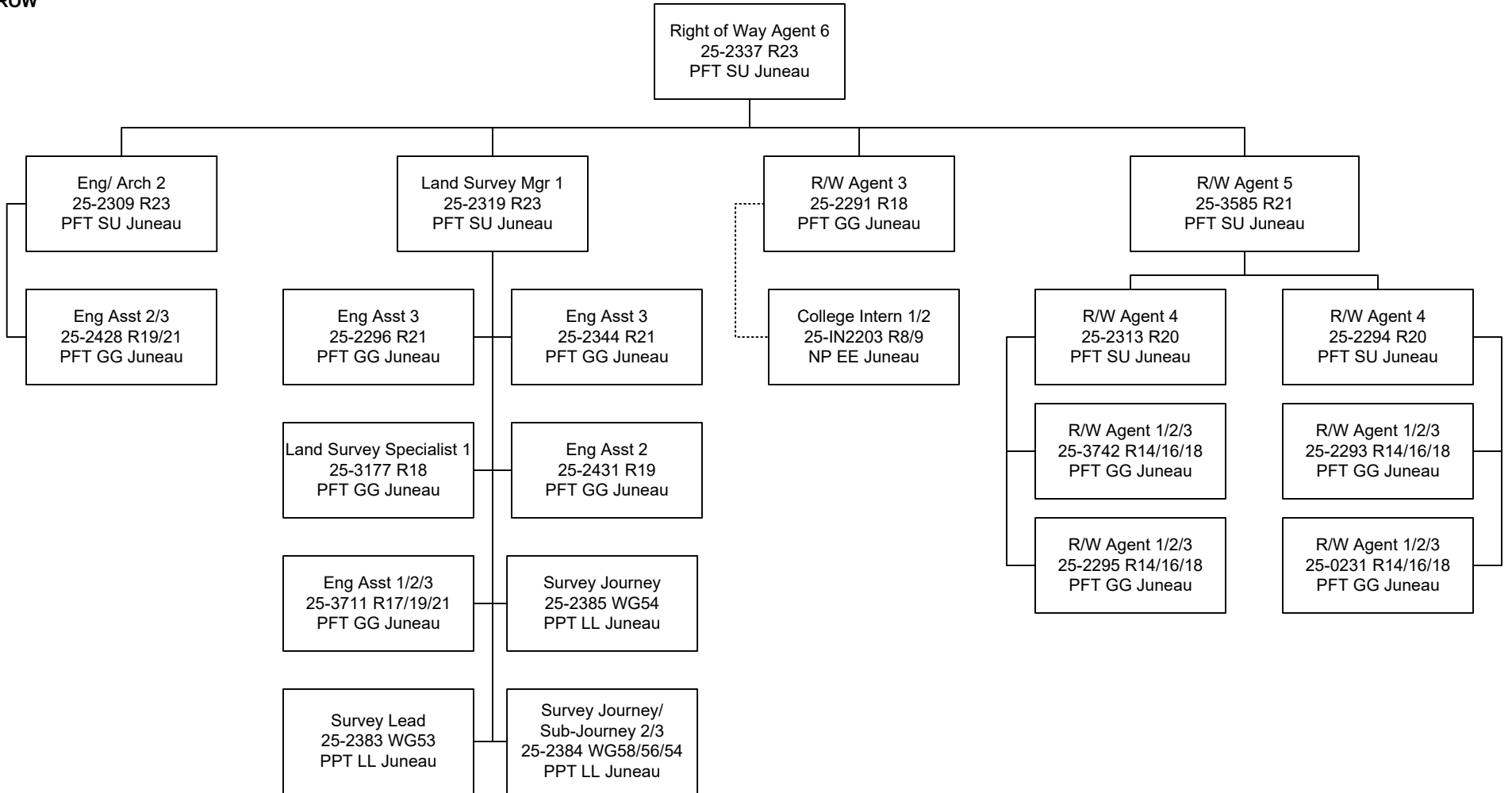
PD&E



**Budgeted in another component

Department of Transportation and Public Facilities
 RDU/Component: Design, Engineering and Construction Services /
 Southcoast Design, Engineering, and Construction Services (3433)
 FY2025 Governor's Budget
 Position Totals: PFT 104 PPT 19 NP 3 = 126 Total

ROW



**-Budgeted in another component -

Department of Transportation and Public Facilities
 RDU/Component: Design, Engineering and Construction
 Services / Southcoast Design, Engineering, and
 Construction Services (3433)
 FY2025 Governor's Budget
 Position Totals: PFT 104 PPT 19 NP 3 = 126 Total

CONSTRUCTION

Division Director
 25-2264 R27
 PFT PX Juneau

Engineer / Architect 5
 25-2330 R27
 PFT SU Juneau

Eng. Asst. 1/2/3
 25-3182 R17/19/21
 PFT GG Juneau

Eng Assistant 1/2
 25-2370 R17/19
 PFT GG Juneau

Env. Impact Analyst 2/3
 25-3855 R17/19
 PFT GG Juneau

Eng / Arch 4
 25-2307 R26
 PFT SU Juneau

Eng. Assistant 2/3
 25-3772 R19/21
 PFT GG Juneau

Eng / Arch 4
 25-2423 R26
 PFT SU Juneau

Construction Project Managers

Project Managers

Eng / Arch 3
 25-3604 R25
 PFT SU Juneau

Eng / Arch 2/3
 25-2315 R23/25
 PFT SU Juneau

Eng / Arch 2/3
 25-2373 R23/25
 PFT SU Juneau

Eng / Arch 1/2/3
 25-2446 R22/23/25
 PFT GG Juneau

Eng/Arch 3
 25-3492 R25
 PFT SU Juneau

Eng/Arch 3
 25-3184 R25
 PFT SU Juneau

Eng Assistant 3
 25-3771 R21
 PFT GG Haines

Eng Assistant 1/2
 25-2355 R17/19
 PFT GG Juneau

Eng Assistant 1/2
 25-3389 R17/19
 PFT GG Ketchikan

Eng Assistant 1/2
 25-2435 R17/19
 PFT GG Juneau

Eng. Tech Jrny
 25-2405 WG54
 PPT LL Juneau

Eng. Tech Jrny
 25-2406 WG54
 PPT LL Haines

Eng. Tech Jrny
 25-2414 WG54
 PPT LL Ketchikan

Eng. Tech Sub-Jrny 3
 25-2422 WG55
 PPT LL Haines

Eng Associate
 25-2367 R21
 PFT GG Juneau

Eng Associate
 25-3695 R21
 PFT GG Juneau

Eng Assistant 2/3
 25-2439 R19/21
 PFT GG Ketchikan

Eng Assistant 1/2
 25-2399 R17/19
 PFT GG Juneau

Eng Assistant 1/2
 25-2443 R17/19
 PFT GG Juneau

Eng. Tech Jrny
 25-2408 WG54
 PPT LL Juneau

Eng. Tech Jrny
 25-2402 WG54
 PPT LL Juneau

Eng. Tech Jrny
 25-2432 WG57
 PPT LL Juneau

Eng Assistant 3
 25-0911 R21
 PFT GG Juneau

Eng Assistant 3
 25-2465 R21
 PFT GG Juneau

Eng Assistant 1/2/3
 25-2388 R17/19/21
 PFT GG Juneau

Eng Assistant 1/2/3
 25-2389 R17/19/21
 PFT GG Juneau

Eng Assistant 1/2
 25-2356 R17/19
 PFT GG Juneau

Eng Assistant 1/2
 25-3699 R17/19
 PFT GG Juneau

Eng. Tech Jrny
 25-0583 WG54
 PPT LL Juneau

Eng Tech Sub-Jrny 3
 25-2424 WG55
 PPT LL Juneau

Eng Assistant 3
 25-2360 R21
 PFT GG Ketchikan

Eng Assistant 3
 25-3390 R21
 PFT GG Juneau

Eng Assistant 1/2
 25-3704 R17/19
 PFT GG Juneau

Eng. Tech Jrny
 25-3701 WG54
 PPT LL Ketchikan

Eng Tech Sub-Jrny 3
 25-2415 WG55
 PPT LL Haines

Eng. Tech, SJ 3
 25-3700 WG55
 PPT LL Juneau

Eng Assistant 1/2
 25-2412 R17/19
 PFT GG Juneau

Tech Eng 1/Arch 1
 25-3191 R24
 PFT GG Juneau

EA3/Eng Assoc/ E1
 25-0484 R21/21/22
 PFT GG Juneau

ENG ASSIST 1/2/3
 25-2314 R17/19/21
 PFT GG Juneau

Eng/Arch 1/Tech Eng 1
 25-2463 R21/24
 PFT GG Juneau

..... = Lead Authority

Eng Tech Sub-Jrny 2
 25-2409 WG57
 PPT LL Ketchikan