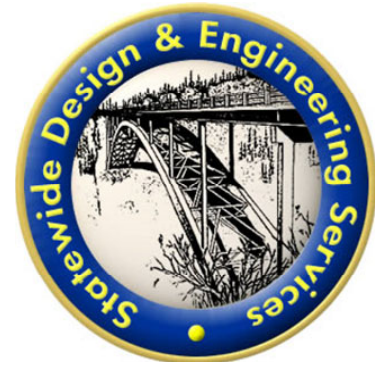
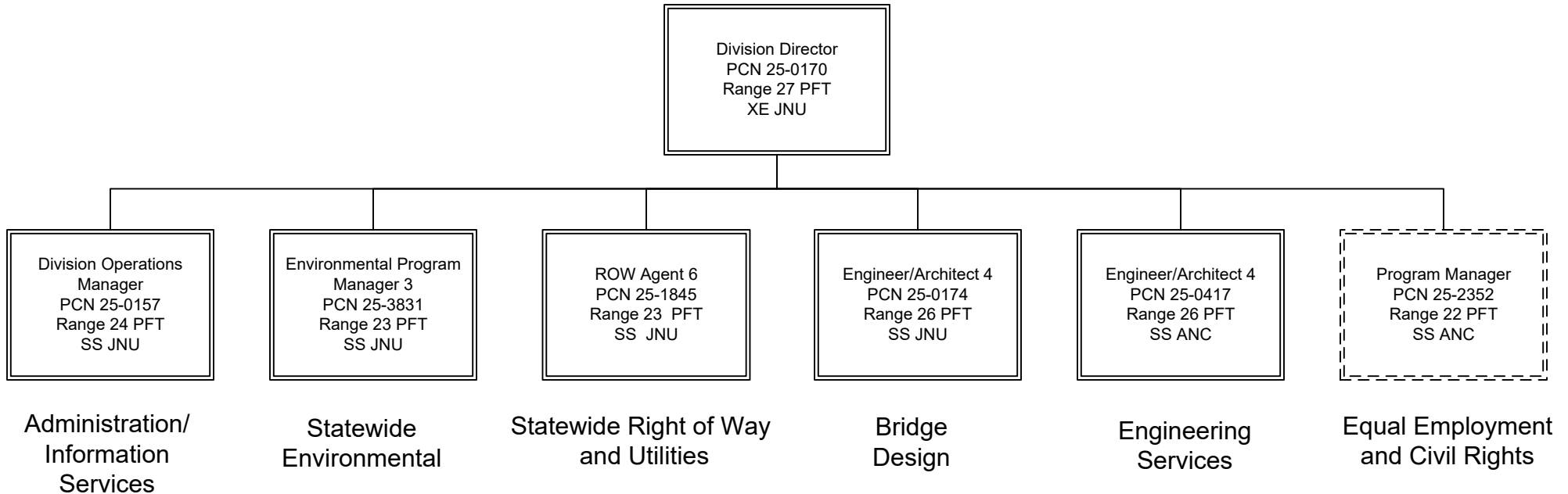


Department of Transportation & Public Facilities  
RDU: Design, Engineering and Construction  
Component: Statewide Design and Engineering Services (2357)  
FY2025 Governor's Budget  
PFT – 55, PT – 0, NP – 3



## CHIEF ENGINEER'S OFFICE

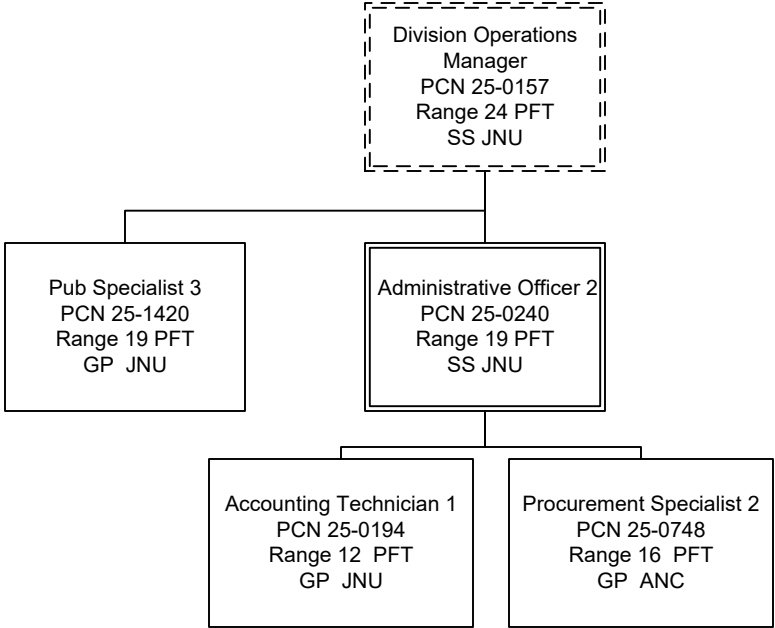


\*PCN 25-2352 is budgeted in the Equal Employment and Civil Rights component.

Department of Transportation & Public Facilities  
RDU: Design, Engineering and Construction  
Component: Statewide Design and Engineering Services (2357)  
FY2025 Governor's Budget  
PFT – 55, PT – 0, NP – 3

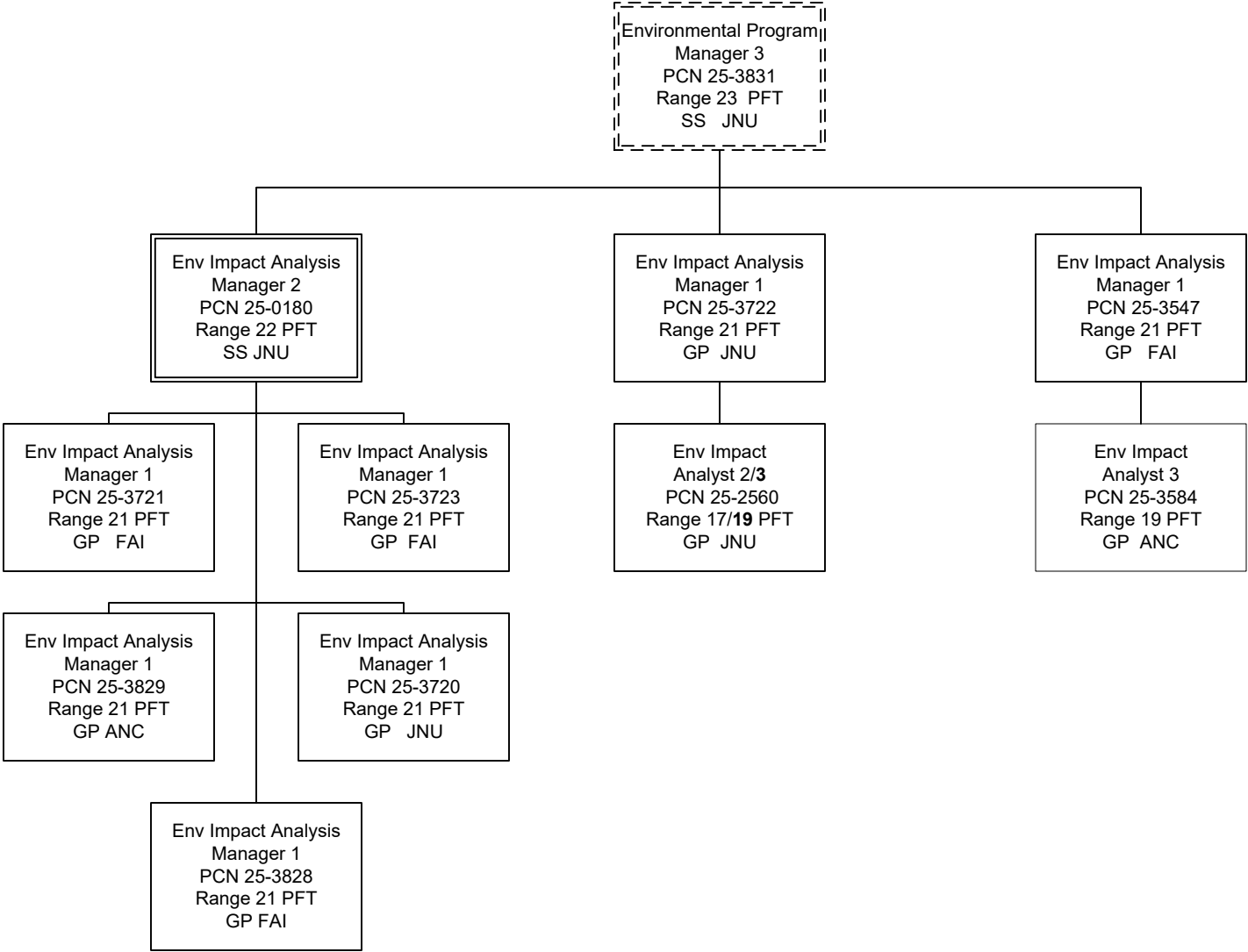


# ADMINISTRATION/ INFORMATION SERVICES





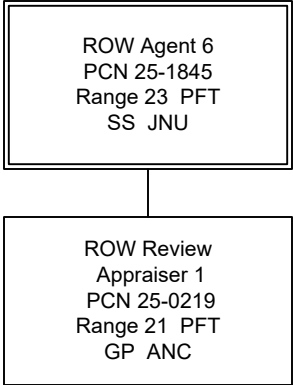
# STATEWIDE ENVIRONMENTAL

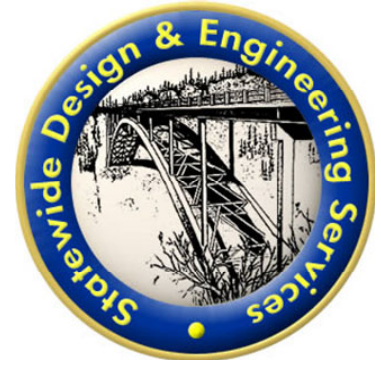


Department of Transportation & Public Facilities  
RDU: Design, Engineering and Construction  
Component: Statewide Design and Engineering Services (2357)  
FY2025 Governor's Budget  
PFT – 55, PT – 0, NP – 3



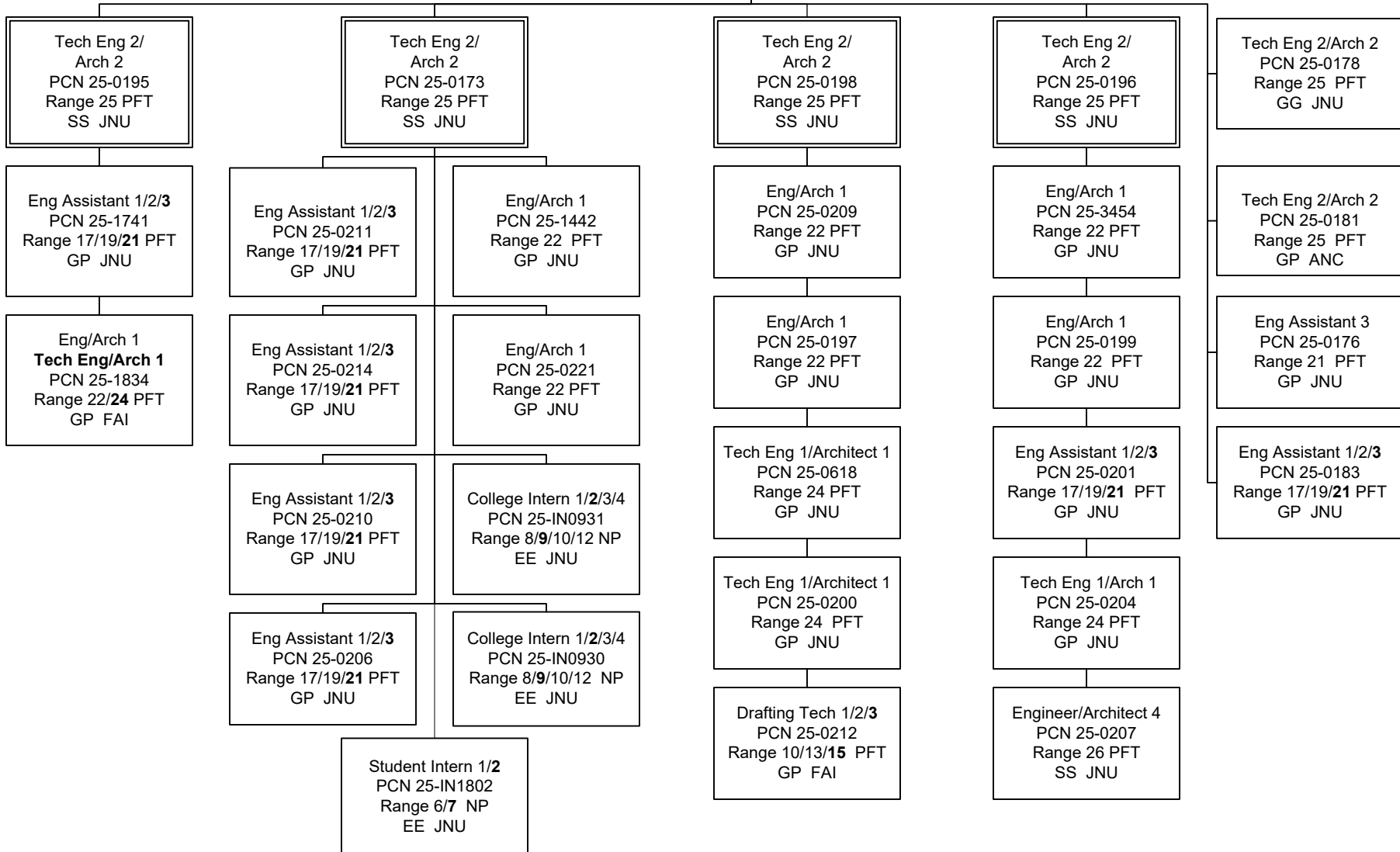
# Statewide Right of Way and Utilities





# BRIDGE DESIGN

Engineer/Architect 4  
 PCN 25-0174  
 Range 26 PFT  
 SS JNU



Department of Transportation & Public Facilities  
 RDU: Design, Engineering and Construction  
 Component: Statewide Design and Engineering Services (2357)  
 FY2025 Governor's Budget  
 PFT – 55, PT – 0, NP – 3



# ENGINEERING SERVICES

