

State of Alaska FY2025 Governor's Operating Budget

Department of Transportation and Public Facilities Northern Region Design, Engineering, and Construction Component Budget Summary

Component: Northern Region Design, Engineering, and Construction

Contribution to Department's Mission

Preserve and improve the transportation system in Alaska and protect the health and safety of Alaska's traveling public by administering the construction of safe, environmentally sound, reliable, and cost-effective highways, airports, and buildings. Develop, design, and administer projects that improve Alaska's transportation and public facilities infrastructure. The division also provides a wide range of technical services to the department, other state & federal agencies, local governments, and the public.

Core Services

- Develop capital improvement projects (CIP) from the planning stage to final plans, specifications, and estimates for construction advertising.
- Ensure environmental compliance services during design development, construction, and the maintenance and operations of facilities.
- Develop a program of community and corridor plans in accordance with project delivery timelines and available funding within various programs.
- Review projects for design standards, cost practicality, and constructability.
- Complete and maintain airport master plans, airport layout plans, and airport certification documents.
- Complete traffic studies, review crash data, and respond to public requests on safety related concerns.
- Conduct hydrological studies, geotechnical investigations and surveying for capital projects and other agencies upon request.
- Manage highway rights-of-way including encroachment management, vacations, and issuing right of way and utility permits per regulations and statutes.
- Acquire real property in support of CIP projects.
- Conduct public involvement throughout project's design and construction process.
- Develop CIP project bid packages through formal advertisement and contract award.
- Coordinate with the Civil Rights Office in the administration of the Disadvantaged Business Enterprises program.
- Solicit and administer professional services agreements for design and construction related professional services.
- Administer construction contracts including field inspection, issue progress payments, materials testing, contract compliance, and contract change administration as necessary.
- Provide support for emergency/disaster response when damages to transportation infrastructure require contractor repairs.
- Close projects per funding agency requirements.

Major Component Accomplishments in 2023

- Delivered a comprehensive program of bid-ready designs and contract documents for highway and airport projects, which are 90% federally funded.
- **Major Highway projects delivered:**
 - **Statewide:** Alaska Highway Mile Post (MP) 1330-1390 Passing Lanes, Dalton Highway MP 18-37 Reconstruction, Elliott Highway MP 51-63 Reconstruction, Healy Spur Road Rehabilitation, Richardson Highway MP 233 Bear Creek Bridge Replacement, Edgerton Highway MP 24-29 Resurfacing, Richardson Highway MP 128-138 Rehabilitation, Richardson Highway MP 35-40 Resurfacing, Richardson Highway MP 266-341 Passing Lanes.
 - **Fairbanks:** University Avenue Rehabilitation and Widening (19th Avenue to Airport Way), Old Steese Highway at Fox Shoulder Widening (HSIP), Aurora Drive Noyes Slough Bridge Replacement, East College Road Resurfacing, 5th Avenue Reconstruction, FIA General Aviation Apron Rehabilitation, Richardson Highway MP 359 Railroad Grade Separated Crossing, Richardson Highway MP 351 Interchange (HSIP), and FAST Planning Surface Upgrades.
 - **Rural:** None.
- **New Airport projects delivered:** Brevig Mission Airport Lighting and Resurfacing, Marshall Airport Improvements, and Chalkyitsik Airport Improvements.
- **Pedestrian Improvement projects delivered:** Richardson Highway MP 357-362 Bicycle/Pedestrian Path

(HSIP) and Northern Region Americans with Disabilities Act (ADA) Improvements (College Road).

- **Community enhancement projects delivered:** None.
- Provided construction administration for 41 active construction projects (24 awarded, 17 continued from previous season) across 14 communities in the Northern Region, overseeing \$257,000.0 in contractor payments. \$71,000.0 of these payments were made for improvements in remote Alaska communities including Kotzebue, Kaltag, Brevig Mission, Noorvik, Shageluk, Selawik, Shishmaref, and St. Mary's.
- Administered \$53,800.0 in construction project work in the Fairbanks area including work on University Avenue, Chena Hot Springs Road, Gaffney/Airport/Richardson/Steese Intersection, Richardson Highway MP 359 Grade Separated Railroad Crossing, and the Fairbanks International Airport General Aviation Apron Rehabilitation projects.
- Responded to multiple disaster events to repair critical infrastructure including the demolition of the Geist Pedestrian Bridge (critical structure failure), repair of the Dalton MP 188 Koyukuk #1 bridge, Elliott Highway MP 86 culvert repair, Glenn Highway flooding response, and the Russian Mission runway rehabilitation (all due to flooding).
- Closed out 27 construction projects.
- Conducted formal Department-Contractor partnering on multiple projects in the region.
- Completed the repaving of 167 lane miles of roadways and 36 lane miles of airports. Completed reconstructing 20 lane miles of roadway. Constructed 9.4 lane miles of new roadway.

Key Component Challenges

- Communicating and coordinating with contractors, project stakeholders, and the public regarding construction season traffic impacts.
- Responsibly advancing capital improvement projects while balancing highly uncertain project costs due to inflation and limited workforce and equipment availability.
- Maintaining compliance with the United States Environmental Protection Agency and Department of Environmental Conservation stormwater monitoring responsibilities and requirements.
- Balancing large, high-cost projects with a reliable and balanced program for the public, contractors, and maintenance and operations.
- Responding to an increasing number of climate related disasters which impact transportation infrastructure.
- Navigating increasing environmental demands from regulatory agencies, both State and Federal.

Significant Changes in Results to be Delivered in FY2025

- Improved traffic operations communication and coordination with State Troopers on full implementation of Traffic Operations Center, which allows traffic signals throughout the Fairbanks area to be monitored and issues troubleshot from Department of Transportation & Public Facilities offices.

Statutory and Regulatory Authority

AS 02 Aeronautics
AS 08 Business and Professions
AS 19 Highways and Ferries
AS 29.60, Municipal Government State Programs
AS 30.30, Navigation, Harbors, Shipping, and Transportation Facilities, Abandoned and Derelict Vessels
AS 34 Property
AS 35 Public Buildings, Works
AS 36 Public Contracts
AS 44 State Government
17 AAC 15 Transportation and Public Facilities
USC CFR 14 Aeronautics
USC CFR 15 Environment
USC CFR 16 Environment
USC CFR 23 Highways
USC CFR 33 Environment
USC CFR 41 Contracts
USC CFR 42 Environment/ADA

USC CFR 43 Lands
USC CFR 49 Transportation

Contact Information
<p>Contact: Joseph Kemp, P.E., Regional Director Phone: (907) 451-2210 E-mail: joseph.kemp@alaska.gov</p>

Northern Region Design, Engineering, and Construction Personal Services Information				
Authorized Positions			Personal Services Costs	
	FY2024 Management Plan	FY2025 Governor		
Full-time	201	201	Annual Salaries	22,734,173
Part-time	67	67	COLA	1,142,079
Nonpermanent	7	7	Premium Pay	2,399,145
			Annual Benefits	15,496,197
			<i>Less 5.87% Vacancy Factor</i>	(2,453,294)
			Lump Sum Premium Pay	0
Totals	275	275	Total Personal Services	39,318,300

Position Classification Summary					
Job Class Title	Anchorage	Fairbanks	Juneau	Others	Total
Accountant 3	0	1	0	0	1
Accountant 4	0	1	0	0	1
Accounting Technician 2	0	1	0	0	1
Accounting Technician 3	0	3	0	0	3
Administrative Assistant 2	0	5	0	0	5
Administrative Officer 1	0	1	0	0	1
Budget Analyst 2	0	1	0	0	1
Chief Engineering Geologist	0	1	0	0	1
College Intern 3	0	1	0	0	1
College Intern 4	0	1	0	0	1
Drafting Technician 3	0	2	0	0	2
Driller, Journey	1	3	0	0	4
Driller, Sub-Journey	1	2	0	0	3
E/T Subjrny 1	0	4	0	0	4
E/T Subjrny 2	0	17	0	5	22
E/T Subjrny 3	0	13	0	4	17
Eng Tech Jrny	0	15	0	4	19
Engineer/Architect 1	0	7	0	0	7
Engineer/Architect 2	0	4	0	0	4
Engineer/Architect 3	1	17	0	0	18
Engineer/Architect 4	0	7	0	0	7
Engineer/Architect 5	0	2	0	0	2
Engineering Assistant 1	0	3	0	0	3
Engineering Assistant 2	0	33	0	3	36
Engineering Assistant 3	1	39	0	5	45
Engineering Associate	0	10	1	4	15
Engineering Geologist 2	0	4	0	0	4
Env Imp A Mgr 1	0	1	0	0	1
Environmental Impact Analyst 1	0	2	0	0	2
Environmental Impact Analyst 2	0	1	0	0	1
Environmental Impact Analyst 3	0	7	0	0	7
Land Survey Manager 1	0	1	0	0	1
Land Surveyor 1	0	3	0	0	3
Land Surveyor 2	0	1	0	0	1
Maint Gen Jrny	0	1	0	0	1
Office Assistant 2	0	1	0	0	1

Component — Northern Region Design, Engineering, and Construction

Position Classification Summary					
Job Class Title	Anchorage	Fairbanks	Juneau	Others	Total
OS Dupl Mach Op	0	1	0	0	1
Procurement Specialist 1	0	1	0	0	1
Procurement Specialist 2	0	2	0	0	2
Procurement Specialist 3	0	1	0	0	1
Right-Of-Way Agent 2	0	4	0	0	4
Right-Of-Way Agent 3	0	8	0	0	8
Right-Of-Way Agent 4	0	2	0	0	2
Right-Of-Way Agent 6	0	1	0	0	1
Survey Lead	0	3	0	0	3
Survey, Journey	0	1	0	0	1
Survey, Sub-Journey 2	0	2	0	0	2
Tech Eng/Arch 1	0	3	0	0	3
Totals	4	245	1	25	275

Component Detail All Funds
Department of Transportation and Public Facilities

Component: Northern Region Design, Engineering, and Construction (3375)
RDU: Design, Engineering and Construction (526)

Non-Formula Component

	FY2023 Actuals	FY2024 Enrolled	FY2024 Authorized	FY2024 Management Plan	FY2025 Governor Adjusted Base	FY2025 Governor	FY2024 Management Plan vs FY2025 Governor		
1000 Personal Services	37,716.4	38,119.3	38,119.3	38,119.3	39,318.3	39,318.3	1,199.0	3.1%	
2000 Travel	174.7	45.4	45.4	45.4	45.4	45.4	0.0	0.0%	
3000 Services	2,688.6	1,465.7	1,465.7	1,465.7	1,456.9	1,456.9	-8.8	-0.6%	
4000 Commodities	608.2	237.4	237.4	237.4	236.6	236.6	-0.8	-0.3%	
5000 Capital Outlay	463.7	0.0	0.0	0.0	0.0	0.0	0.0	0.0%	
7000 Grants, Benefits	0.0	0.0	0.0	0.0	0.0	0.0	0.0	0.0%	
8000 Miscellaneous	0.0	0.0	0.0	0.0	0.0	0.0	0.0	0.0%	
Totals	41,651.6	39,867.8	39,867.8	39,867.8	41,057.2	41,057.2	1,189.4	3.0%	
Fund Sources:									
1004 Gen Fund (UGF)	250.3	252.6	252.6	252.6	160.2	160.2	-92.4	-36.6%	
1005 GF/Prgm (DGF)	177.2	351.5	351.5	351.5	365.8	365.8	14.3	4.1%	
1007 I/A Rcpts (Other)	196.3	177.9	177.9	177.9	183.5	183.5	5.6	3.1%	
1061 CIP Rcpts (Other)	41,027.8	39,054.1	39,054.1	39,054.1	40,315.5	40,315.5	1,261.4	3.2%	
1232 ISPF-I/A (Other)	0.0	31.7	31.7	31.7	32.2	32.2	0.5	1.6%	
Unrestricted General (UGF)	250.3	252.6	252.6	252.6	160.2	160.2	-92.4	-36.6%	
Designated General (DGF)	177.2	351.5	351.5	351.5	365.8	365.8	14.3	4.1%	
Other Funds	41,224.1	39,263.7	39,263.7	39,263.7	40,531.2	40,531.2	1,267.5	3.2%	
Federal Funds	0.0	0.0	0.0	0.0	0.0	0.0	0.0	0.0%	
Positions:									
Permanent Full Time	198	198	198	201	201	201	0	0.0%	
Permanent Part Time	71	71	71	67	67	67	0	0.0%	
Non Permanent	7	7	7	7	7	7	0	0.0%	

Change Record Detail - Multiple Scenarios with Descriptions
Department of Transportation and Public Facilities

Component: Northern Region Design, Engineering, and Construction (3375)

RDU: Design, Engineering and Construction (526)

Scenario/Change Record Title	Trans Type	Totals	Personal Services	Travel	Services	Commodities	Capital Outlay	Grants, Benefits	Miscellaneous	Positions		
										PFT	PPT	NP
***** Changes From FY2024 Enrolled To FY2024 Authorized *****												
FY2024 Enrolled	Enrolled	39,867.8	38,119.3	45.4	1,465.7	237.4	0.0	0.0	0.0	198	71	7
1004 Gen Fund		252.6										
1005 GF/Prgm		351.5										
1007 I/A Rcpts		177.9										
1061 CIP Rcpts		39,054.1										
1232 ISPF-I/A		31.7										
Subtotal		39,867.8	38,119.3	45.4	1,465.7	237.4	0.0	0.0	0.0	198	71	7
***** Changes From FY2024 Authorized To FY2024 Management Plan *****												
Transfer Administrative Officer 1 (25-1367) to Commissioner's Office	Trout	0.0	0.0	0.0	0.0	0.0	0.0	0.0	0.0	-1	0	0
Transfer full-time, Administrative Officer 1 (25-1367), range 17, located in Fairbanks, to Commissioner's Office and reclassify to a Program Coordinator 2, range 20, located in Fairbanks. This position will be responsible for expansion and oversight of workforce recruitment, development, and management.												
Change Four Engineering Assistant Positions from Part-Time to Full-Time	PosAdj	0.0	0.0	0.0	0.0	0.0	0.0	0.0	0.0	4	-4	0
Northern Region Design, Engineering, and Construction reclassified multiple positions from part-time Engineering Technician Sub-Journey 2s to full-time Engineering Assistants to respond to the increased size and complexity of the construction program.												
The following positions were reclassified: Full-time, Engineering Assistant 1/2 (25-1511), range 17/19, located in Fairbanks Full-time, Engineering Assistant 1/2 (25-1688), range 17/19, located in Fairbanks Full-time, Engineering Assistant 1/2 (25-1701), range 17/19, located in Fairbanks Full-time, Engineering Assistant 3 (25-1710), range 21, located in Fairbanks												
Subtotal		39,867.8	38,119.3	45.4	1,465.7	237.4	0.0	0.0	0.0	201	67	7
***** Changes From FY2024 Management Plan To FY2025 Governor Adjusted Base *****												
FY2025 Salary, Health Insurance, and PERS Rate Adjustments	SalAdj	1,589.4	1,589.4	0.0	0.0	0.0	0.0	0.0	0.0	0	0	0
1004 Gen Fund		8.3										
1005 GF/Prgm		14.3										
1007 I/A Rcpts		5.6										
1061 CIP Rcpts		1,560.7										
1232 ISPF-I/A		0.5										

Change Record Detail - Multiple Scenarios with Descriptions
Department of Transportation and Public Facilities

Component: Northern Region Design, Engineering, and Construction (3375)
RDU: Design, Engineering and Construction (526)

Scenario/Change Record Title	Trans Type	Totals	Personal Services	Travel	Services	Commodities	Capital Outlay	Grants, Benefits	Miscellaneous	Positions		
										PFT	PPT	NP
FY2025 Salary, Health Insurance, and PERS Rate Adjustments: \$1,589.4												
FY2025 AlaskaCare insurance from \$1,793 to \$1,908 per member per month: \$46.4												
FY2025 GGU health insurance from \$1,573.50 to \$1,579.50 per member per month: \$11.2												
FY2025 GGU 5% Cost of Living Adjustment: \$1,116.7												
FY2025 PERS Rate Adjustment from 25.10% to 26.76%: \$415.1												
Transfer Mechanic Automotive Advanced Journey/Lead (25-1269) from State Equipment Fleet for Program Alignment												
	Trin	0.0	0.0	0.0	0.0	0.0	0.0	0.0	0.0	1	0	0
Transfer full-time Mechanic-Automotive-Advanced Journey/Lead (25-1269), wage grade 53, located in Fairbanks, from State Equipment Fleet and reclass to full-time Budget Analyst 1/2, range 17/19, located in Fairbanks.												
This position will collaborate and assist the Administrative Operations Manager in managing daily budgetary matters, administrative processes, and supervision. It will focus on enhancing the region's budget framework, monitoring revenue and expenditure trends, and identifying existing budget-related challenges. This will enhance operational efficiency within the region and empower the position to offer training and develop training materials on budget procedures and techniques. It will also facilitate career advancement within the region, providing individuals with opportunities for professional growth and development.												
Transfer Authority to Northern Region Support Services for Program Alignment												
	Trout	-130.6	-125.8	0.0	-4.4	-0.4	0.0	0.0	0.0	0	0	0
1004 Gen Fund		-100.7										
1061 CIP Rcpts		-29.9										
The Assistant Commissioner (25-1239) has historically been funded 50/50 between Northern Region Design, Engineering, and Construction and Northern Region Support Services. This transfer moves six months of funding authority to Support Services so the position can be supported in one component.												
Additional funding for core services and commodities is also transferred.												
Transfer Technical Engineer 1 (25-1832) to the Data Modernization and Innovation Office for Program Alignment												
	Trout	-269.4	-264.6	0.0	-4.4	-0.4	0.0	0.0	0.0	-1	0	0
1061 CIP Rcpts		-269.4										
Transfer a permanent full-time Technical Engineer 1 (25-1832), range 24, located in Fairbanks, to the Data Modernization and Innovation Office for program alignment.												
The Data Modernization and Innovation Office is focused on innovation, information systems, and big data. Initial focus areas include Geospatial Information Systems (GIS), Intelligent Transportation Systems (ITS), and AASHTOWare. The office supports innovative technologies and enables the department to capture and compile information and make data-driven decisions.												
	Subtotal	41,057.2	39,318.3	45.4	1,456.9	236.6	0.0	0.0	0.0	201	67	7

***** Changes From FY2025 Governor Adjusted Base To FY2025 Governor *****

Change Record Detail - Multiple Scenarios with Descriptions
Department of Transportation and Public Facilities

Component: Northern Region Design, Engineering, and Construction (3375)

RDU: Design, Engineering and Construction (526)

Scenario/Change Record Title	Trans Type	Totals	Personal Services	Travel	Services	Commodities	Capital Outlay	Grants, Benefits	Miscellaneous	Positions		
										PFT	PPT	NP
	Totals	41,057.2	39,318.3	45.4	1,456.9	236.6	0.0	0.0	0.0	201	67	7

Line Item Detail (1676)
Department of Transportation and Public Facilities
Travel

Component: Northern Region Design, Engineering, and Construction (3375)

Line Number	Line Name		FY2023 Actuals	FY2024 Management Plan	FY2025 Governor
2000	Travel		174.7	45.4	45.4
Object Class	Servicing Agency	Explanation	FY2023 Actuals	FY2024 Management Plan	FY2025 Governor
2000 Travel Detail Totals			174.7	45.4	45.4
2000	In-State Employee Travel	Travel and per diem for field travel including project review, survey, project analysis, administrative and procedural review of projects within the state, and attending training and conferences. In state administrative travel for the regional director, section and group chiefs, and administrative staff.	124.5	41.4	41.4
2002	Out of State Employee Travel	Out of state travel and per diem for regional director or other employees. Travel is usually for administrative, conventions, meeting, and training not available in-state.	50.2	4.0	4.0

Line Item Detail (1676)
Department of Transportation and Public Facilities
Services

Component: Northern Region Design, Engineering, and Construction (3375)

Line Number	Line Name		FY2023 Actuals	FY2024 Management Plan	FY2025 Governor
3000	Services		2,688.6	1,465.7	1,456.9
Object Class	Servicing Agency	Explanation	FY2023 Actuals	FY2024 Management Plan	FY2025 Governor
3000 Services Detail Totals			2,688.6	1,465.7	1,456.9
3000	Education Services	Training and conference fees for staff, excluding IT-related. Includes Western Alliance for Quality in Transportation Construction (WAQTC) training, Nuclear Regulatory Commission (NRC) training, American Association of State and Highway Transportation Officials (AASHTO) training, and Highway Users Federation conferences.	4.8	2.0	2.0
3000	Education Services	Regional Materials Lab testing.	30.9	0.0	0.0
3000	Education Services	Memberships, including the National Society of Professional Engineers, American Concrete Institute Alaska Chapter, and a license fee for the United States Nuclear Regulatory Commission.	5.3	2.3	2.0
3000	Education Services	Employee tuition for professional development.	1.9	2.0	2.0
3001	Financial Services	Financial Services.	0.4	0.5	0.5
3003	Information Technology	All information technology (IT) contractual costs such as software licensing, software maintenance, IT training, IT consulting, and IT equipment leases.	7.9	8.0	8.0
3004	Telecommunications	Long distance, local phone service, data communications, cellular	24.8	25.0	25.0

Line Item Detail (1676)
Department of Transportation and Public Facilities
Services

Component: Northern Region Design, Engineering, and Construction (3375)

Object Class	Servicing Agency	Explanation	FY2023 Actuals	FY2024 Management Plan	FY2025 Governor
3000 Services Detail Totals			2,688.6	1,465.7	1,456.9
		service provided by vendors.			
3006	Delivery Services	Courier contract, transport services, freight, and postage.	41.9	25.0	20.0
3007	Advertising and Promotions	Advertising and legal and public notices for non-project specific and public relations activities.	3.3	10.0	10.0
3008	Utilities	Utilities include waste disposal, propane and heating oil for field labs, and the McKinley building.	98.0	100.0	100.0
3009	Structure/Infrastructure/Land	Inspections and testing.	22.8	0.0	0.0
3010	Equipment/Machinery	Repairs and maintenance agreements for copiers, and office equipment as needed.	33.7	33.1	33.1
3010	Equipment/Machinery	Equipment and machinery or other office equipment leasing as needed.	94.3	74.4	74.4
3011	Other Services	Print/Copy/Graphics services.	8.3	10.0	8.5
3011	Other Services	Contractor materials testing inspections and safety services.	40.3	0.0	0.0
3015	Inter-Agency Conservation/Environmental	FishGm - Department-wide Reimbursable services agreement for project review for the Department of Fish and Game.	0.3	0.0	0.0
3015	Inter-Agency Conservation/Environmental	Trans - Facilities Services (3195) Reimbursable services agreements with the Division of Facilities Services for a variety of building maintenance needs, including carpet replacement, office space updates, and asbestos abatement.	32.5	0.0	0.0
3017	Inter-Agency Information Technology Non-Telecommunications	Admin - Department-wide Computer services provided by Department of Administration such as central server, data storage, printing, network services, open connect, and task order system.	689.2	690.0	690.0

Line Item Detail (1676)
Department of Transportation and Public Facilities
Services

Component: Northern Region Design, Engineering, and Construction (3375)

Object Class	Servicing Agency	Explanation	FY2023 Actuals	FY2024 Management Plan	FY2025 Governor
3000 Services Detail Totals			2,688.6	1,465.7	1,456.9
3018	Inter-Agency Information Technology Telecommunications	Admin - Department-wide Telecommunications services provided by the Department of Administration such as basic telephone services, equipment and features, dedicated voice/data line service, statewide paging, two-way radio, and video conferencing.	81.8	80.0	80.0
3021	Inter-Agency Mail	Admin - Department-wide Centralized mail services chargeback	1.1	1.1	1.1
3022	Inter-Agency Human Resources	Admin - Department-wide Interagency Human Resource chargeback.	241.5	212.5	212.5
3024	Inter-Agency Legal	Law - Department-wide Legal services provided by the Department of Law.	73.3	5.0	3.0
3026	Inter-Agency Insurance	Admin - Department-wide Risk Management Services for the McKinley Building (leased).	0.0	1.8	1.8
3027	Inter-Agency Financial	Admin - Department-wide Chargeback fees for HRM/IRIS/ALDER.	142.0	142.0	142.0
3027	Inter-Agency Financial	Admin - Department-wide Inter-agency Accounts Payable and Travel core service.	2.9	3.0	3.0
3028	Inter-Agency Americans with Disabilities Act Compliance	Admin - Department-wide Americans with Disabilities Act (ADA) Chargeback	5.2	3.0	3.0
3037	State Equipment Fleet	Trans - State Equipment Fleet (2791) State Equipment and Fleet operating and replacement fees for approximately 76 vehicles, to include credit card fuel, and vehicle maintenance and repairs. Budgeted amounts, if any, are for operating budget vehicles only; prior year actuals amount includes the cost of capital improvement project vehicles, which are funded through an unbudgeted reimbursable services agreement.	38.5	35.0	35.0

Line Item Detail (1676)
Department of Transportation and Public Facilities
Services

Component: Northern Region Design, Engineering, and Construction (3375)

Object Class	Servicing Agency	Explanation	FY2023 Actuals	FY2024 Management Plan	FY2025 Governor
3000 Services Detail Totals			2,688.6	1,465.7	1,456.9
3039	DOT/PF Time & Equipment System	Vehicle Suspense expenditures that were improperly included in FY2023 actuals.	961.7	0.0	0.0

Line Item Detail (1676)
Department of Transportation and Public Facilities
Commodities

Component: Northern Region Design, Engineering, and Construction (3375)

Line Number	Line Name		FY2023 Actuals	FY2024 Management Plan	FY2025 Governor
4000	Commodities		608.2	237.4	236.6
Object Class	Servicing Agency	Explanation	FY2023 Actuals	FY2024 Management Plan	FY2025 Governor
4000 Commodities Detail Totals			608.2	237.4	236.6
4000	Business	Office and instructional supplies. Includes consumable supplies such as paper, pens, copy machine supplies, photographic supplies, computer and word processing supplies, and subscriptions. Also includes non-consumable supplies such as furniture and office equipment.	86.3	69.7	69.7
4000	Business	Computers, monitors, printers.	167.6	105.7	105.3
4000	Business	Equipment/Furniture/Tools/Vehicles	224.1	15.0	14.6
4002	Household/Institutional	Minor cleaning supplies for office equipment and conference rooms.	7.3	2.0	2.0
4003	Scientific and Medical	Laboratory supplies for construction engineering and quality control.	2.1	25.0	25.0
4004	Safety	Safety, first aid, personal safety protection, and fire suppression.	6.6	10.0	10.0
4019	Small Tools/Minor Equipment	Signs/markers, minor tools/equipment, maintenance and repair supplies. Includes paint, lumber and other structural supplies for minor business or field office repair and maintenance. Also includes lube and parts for minor equipment repairs.	113.8	10.0	10.0
4020	Equipment Fuel	Equipment Fuel	0.4	0.0	0.0

Line Item Detail (1676)
Department of Transportation and Public Facilities
Capital Outlay

Component: Northern Region Design, Engineering, and Construction (3375)

Line Number	Line Name		FY2023 Actuals	FY2024 Management Plan	FY2025 Governor
5000	Capital Outlay		463.7	0.0	0.0
Object Class	Servicing Agency	Explanation	FY2023 Actuals	FY2024 Management Plan	FY2025 Governor
5000 Capital Outlay Detail Totals			463.7	0.0	0.0
5002	Structures and Infrastructure	Contract with Michael Baker International.	106.4	0.0	0.0
5004	Equipment	Materials and supplies for materials sampling and testing at construction project sites.	67.0	0.0	0.0
5004	Equipment	Capital purchases and other equipment.	60.7	0.0	0.0
5004	Equipment	Regional Materials Lab inspection testing.	144.6	0.0	0.0
5004	Equipment	Settlement agreement to private property owners.	85.0	0.0	0.0

Revenue Detail (1681)
Department of Transportation and Public Facilities

Component: Northern Region Design, Engineering, and Construction (3375)

Revenue Type (OMB Fund Code) Revenue Source	Component	Comment	FY2023 Actuals	FY2024 Management Plan	FY2025 Governor
5005 GF/Prgm (1005 GF/Prgm)			177.3	351.5	365.8
5101 Program Receipts Public Protection - Licenses and Permits		Receipts from issuing utility permits in the state's right-of-way and for inspections for utility installations.	56.3	126.6	132.6
5113 Program Receipts Natural Resources - Rent and Royalties		Fees collected for plans and specifications in connection with bids and contracts for construction and maintenance projects, per the Department of Transportation and Public Facilities policy and procedure 10.02.030. Receipts also include charges assessed to the owners of illegally placed signs within the State's right-of-way. These signs are removed and stored. When they are identified, they are returned to the owner after the owner has paid the established fee. Receipts are also collected from the Tourist Oriented Destination Signs (TODS) program, per AS 19.05.070-.100.	121.0	19.9	19.9
5120 Program Receipts - Other Revenue		Receipts from the sale and or lease of excess right-of-way and public requests for documents.	0.0	205.0	213.3
5007 I/A Rcpts (1007 I/A Rcpts)			196.3	177.9	183.5
5301 Inter-Agency Receipts	Trans - Northern Design & Eng Svcs (2299)	Reimbursement from any state agency's operating budget for services provided. Typical requests are for design studies, environmental consultation, drilling, drafting, and right-of-way surveys. Specific agreements and departments served vary from year to year.	196.3	177.9	183.5

Revenue Detail (1681)
Department of Transportation and Public Facilities

Component: Northern Region Design, Engineering, and Construction (3375)

Revenue Type (OMB Fund Code) Revenue Source	Component	Comment	FY2023 Actuals	FY2024 Management Plan	FY2025 Governor
5061 CIP Rcpts (1061 CIP Rcpts)			41,027.8	39,054.1	40,315.6
5351 Capital Improvement Project Inter-Agency		Capital improvement project receipts for work in direct support of capital projects.	31,971.4	31,945.7	33,057.9
5351 Capital Improvement Project Inter-Agency		Recovery of indirect costs from the capital budget via the department's Indirect Cost Allocation Plan (ICAP). Increase \$184.2 for unallocated rates adjustments.	9,056.4	7,108.4	7,257.7
5232 ISPF-I/A (1232 ISPF-I/A)			0.0	31.7	32.2
5426 In-State Pipeline Fund IA	Commerce - Department-wide	Provide pipeline regulatory and engineering expertise for In-State Natural Gas Pipeline.	0.0	31.7	32.2

Inter-Agency Services (1682)
Department of Transportation and Public Facilities

Component: Northern Region Design, Engineering, and Construction (3375)

				FY2023 Actuals	FY2024 Management Plan	FY2025 Governor
Component Totals				1,308.3	1,173.4	1,171.4
With Department of Fish and Game				0.3	0.0	0.0
With Department of Transportation and Public Facilities				71.0	35.0	35.0
With Department of Administration				1,163.7	1,133.4	1,133.4
With Department of Law				73.3	5.0	3.0
Object Class	Servicing Agency	Explanation	FY2023 Actuals	FY2024 Management Plan	FY2025 Governor	
3015	Inter-Agency Conservation/Environmental	FishGm - Department-wide	0.3	0.0	0.0	
3015	Inter-Agency Conservation/Environmental	Trans - Facilities Services (3195)	32.5	0.0	0.0	
3017	Inter-Agency Information Technology Non-Telecommunications	Admin - Department-wide	689.2	690.0	690.0	
3018	Inter-Agency Information Technology Telecommunications	Admin - Department-wide	81.8	80.0	80.0	
3021	Inter-Agency Mail	Admin - Department-wide	1.1	1.1	1.1	
3022	Inter-Agency Human Resources	Admin - Department-wide	241.5	212.5	212.5	
3024	Inter-Agency Legal	Law - Department-wide	73.3	5.0	3.0	

Inter-Agency Services (1682)
Department of Transportation and Public Facilities

Component: Northern Region Design, Engineering, and Construction (3375)

Object Class		Servicing Agency	Explanation	FY2023 Actuals	FY2024 Management Plan	FY2025 Governor
3026	Inter-Agency Insurance	Admin - Department-wide	Department of Law. Risk Management Services for the McKinley Building (leased).	0.0	1.8	1.8
3027	Inter-Agency Financial	Admin - Department-wide	Chargeback fees for HRM/IRIS/ALDER.	142.0	142.0	142.0
3027	Inter-Agency Financial	Admin - Department-wide	Inter-agency Accounts Payable and Travel core service.	2.9	3.0	3.0
3028	Inter-Agency Americans with Disabilities Act Compliance	Admin - Department-wide	Americans with Disabilities Act (ADA) Chargeback	5.2	3.0	3.0
3037	State Equipment Fleet	Trans - State Equipment Fleet (2791)	State Equipment and Fleet operating and replacement fees for approximately 76 vehicles, to include credit card fuel, and vehicle maintenance and repairs. Budgeted amounts, if any, are for operating budget vehicles only; prior year actuals amount includes the cost of capital improvement project vehicles, which are funded through an unbudgeted reimbursable services agreement.	38.5	35.0	35.0

Personal Services Expenditure Detail
Department of Transportation and Public Facilities

Scenario: FY2025 Governor (20959)
Component: Northern Region Design, Engineering, and Construction (3375)
RDU: Design, Engineering and Construction (526)

PCN	Job Class Title	Time Status	Retire Code	Barg Unit	Location	Salary Sched	Range / Step	Comp Months	Split / Count	Annual Salaries	COLA	Premium Pay	Annual Benefits	Total Costs	UGF Amount
25-0165	Engineering Assistant 3	FT	A	GP	Fairbanks	203	21O / P	12.0		121,276	9,319	9,273	74,906	214,774	0
25-0202	Engineering Assistant 3	FT	A	GP	Fairbanks	203	21B / C	12.0		84,838	6,741	9,594	59,459	160,632	0
25-0247	Driller, Sub-Journey	FT	A	LL	Anchorage	2AA	54C / D	12.0		53,452	0	11,389	47,005	111,846	0
25-0250	Chief Engineering Geologist	FT	A	SS	Fairbanks	203	24F	12.0		122,283	0	0	75,353	197,636	0
25-0723	Driller, Journey	PT	A	LL	Fairbanks	2EE	53F	9.5		52,305	0	19,062	45,781	117,148	0
25-0732	Engineering Geologist 2	FT	A	GP	Fairbanks	203	18D / E	12.0		74,698	6,528	16,749	58,183	156,158	0
25-1269	Budget Analyst 2	FT	A	SS	Fairbanks	203	19D	12.0		81,890	0	0	58,077	139,967	0
25-1366	Engineer/Architect 4	FT	A	SS	Fairbanks	203	26R	12.0		185,152	0	0	101,172	286,324	0
25-1368	Engineer/Architect 4	FT	A	SS	Fairbanks	203	26Q	12.0		186,056	0	0	101,504	287,560	0
25-1369	Engineer/Architect 5	FT	A	SS	Fairbanks	203	27O / P	12.0		171,829	0	0	96,291	268,120	0
25-1371	Engineer/Architect 3	FT	A	SS	Fairbanks	203	25L / M	12.0		147,220	0	0	86,019	233,239	0
25-1372	Engineer/Architect 4	FT	A	SS	Fairbanks	203	26R	12.0		185,152	0	0	101,172	286,324	0
25-1377	Administrative Assistant 2	FT	A	GP	Fairbanks	203	14B / C	12.0		51,332	3,945	3,937	42,709	101,923	8,867
25-1380	Administrative Assistant 2	FT	A	GP	Fairbanks	203	14A / B	12.0		51,146	3,651	0	40,946	95,743	8,330
25-1381	Procurement Specialist 2	FT	A	GP	Fairbanks	203	16B / C	12.0		60,375	4,634	4,537	46,834	116,380	0
25-1382	Engineering Assistant 3	FT	A	GP	Fairbanks	203	21E / F	12.0		92,025	6,569	0	58,430	157,024	0
25-1384	Engineer/Architect 3	FT	A	SS	Fairbanks	203	25N / O	12.0		156,428	0	0	89,957	246,385	0
25-1385	Accounting Technician 3	FT	A	GP	Fairbanks	203	16A / B	12.0		58,545	4,491	4,374	45,981	113,391	0
25-1387	Engineering Associate	FT	A	GP	Fairbanks	203	21Q	12.0		129,675	10,682	19,965	83,072	243,394	0
25-1388	Right-Of-Way Agent 3	FT	A	GP	Fairbanks	203	18K	12.0		86,229	6,629	6,633	58,788	158,279	0
25-1389	Engineer/Architect 2	FT	A	GP	Fairbanks	203	23G / J	12.0		112,749	8,049	0	67,293	188,091	0
25-1390	Land Survey Manager 1	FT	A	SS	Fairbanks	203	23M	12.0		130,083	0	0	78,689	208,772	0
25-1391	Right-Of-Way Agent 3	FT	A	GP	Fairbanks	203	18G / J	12.0		81,170	6,221	5,984	56,346	149,721	0
25-1392	Land Surveyor 2	FT	A	SS	Fairbanks	2S4	22J / K	12.0		115,723	0	0	72,547	188,270	0
25-1393	Engineer/Architect 3	FT	A	SS	Fairbanks	203	25F	12.0		131,435	0	0	79,267	210,702	0
25-1394	Engineering Assistant 3	FT	A	GP	Fairbanks	203	21A / B	12.0		83,148	5,936	0	54,633	143,717	0
25-1395	Engineering Associate	FT	A	GP	Fairbanks	203	21O	12.0		119,906	9,218	9,223	74,299	212,646	0
25-1396	Engineer/Architect 1	FT	A	GP	Fairbanks	203	22C / D	12.0		91,777	6,552	0	58,324	156,653	0
25-1398	Engineer/Architect 4	FT	A	SS	Fairbanks	203	26Q / R	12.0		183,203	0	0	100,458	283,661	0
25-1399	Right-Of-Way Agent 3	FT	A	GP	Fairbanks	203	18K	12.0		86,229	6,629	6,633	58,788	158,279	0
25-1400	Right-Of-Way Agent 2	FT	A	GP	Fairbanks	203	16K / L	12.0		75,750	5,822	5,803	53,951	141,326	0
25-1403	Accounting Technician 3	FT	A	GP	Fairbanks	203	16B / C	12.0		59,665	4,583	4,537	46,530	115,315	0
25-1405	Engineering Associate	FT	A	GP	Valdez	211	21J / K	12.0		112,069	9,210	16,944	74,250	212,473	0
25-1406	Engineering Assistant 3	FT	A	GP	Fairbanks	203	21M	12.0		112,476	8,647	8,652	70,877	200,652	0
25-1407	Engineer/Architect 3	FT	A	SS	Fairbanks	203	25J / K	12.0		138,639	0	0	82,349	220,988	0
25-1409	Engineering Assistant 3	FT	A	GP	Fairbanks	203	21M / N	12.0		113,995	8,755	8,652	71,527	202,929	0
25-1410	Accountant 3	FT	A	GG	Fairbanks	203	18A / B	12.0		67,227	5,159	5,040	49,979	127,405	0
25-1411	Engineer/Architect 3	FT	A	SS	Fairbanks	203	25M / N	12.0		151,149	0	0	87,699	238,848	0

Note: If a position is split, an asterisk (*) will appear in the Split/Count column. If the split position is also counted in the component, two asterisks (**) will appear in this column. [No valid job title] appearing in the Job Class Title indicates that the PCN has an invalid class code or invalid range for the class code effective date of this scenario.

Personal Services Expenditure Detail
Department of Transportation and Public Facilities

Scenario: FY2025 Governor (20959)
Component: Northern Region Design, Engineering, and Construction (3375)
RDU: Design, Engineering and Construction (526)

PCN	Job Class Title	Time Status	Retire Code	Barg Unit	Location	Salary Sched	Range / Step	Comp Months	Split / Count	Annual Salaries	COLA	Premium Pay	Annual Benefits	Total Costs	UGF Amount
25-1412	Engineering Assistant 3	FT	A	GP	Fairbanks	203	21O	12.0		119,906	9,876	18,447	78,244	226,473	0
25-1414	Right-Of-Way Agent 4	FT	A	SS	Fairbanks	203	20N	12.0		109,720	0	0	69,980	179,700	0
25-1415	Right-Of-Way Agent 4	FT	A	SS	Fairbanks	203	20M	12.0		106,267	0	0	68,503	174,770	0
25-1416	Right-Of-Way Agent 3	FT	A	GP	Fairbanks	203	18J / K	12.0		86,229	6,629	6,633	58,788	158,279	0
25-1419	Engineer/Architect 4	FT	A	SS	Fairbanks	203	26P	12.0		170,290	0	0	95,727	266,017	0
25-1421	Engineering Assistant 3	FT	A	GP	Fairbanks	203	21J	12.0		102,200	7,857	7,861	66,144	184,062	0
25-1423	Right-Of-Way Agent 2	FT	A	GP	Fairbanks	203	16N / O	12.0		83,816	6,439	6,387	57,650	154,292	0
25-1425	Right-Of-Way Agent 2	FT	A	GP	Fairbanks	203	16B / C	12.0		59,918	4,601	4,537	46,638	115,694	0
25-1426	Environmental Impact Analyst 3	FT	A	GP	Fairbanks	203	19J	12.0		89,232	6,860	6,864	60,171	163,127	0
25-1432	Engineer/Architect 1	FT	A	GP	Fairbanks	203	22J	12.0		109,473	7,815	0	65,892	183,180	0
25-1433	Engineer/Architect 3	FT	A	SS	Anchorage	200	25F	12.0		127,608	0	0	77,631	205,239	0
25-1434	Engineer/Architect 1	FT	A	GP	Fairbanks	203	22L	12.0		116,688	8,330	0	68,978	193,996	0
25-1435	Engineer/Architect 3	FT	A	SS	Fairbanks	203	25J / K	12.0		139,006	0	0	82,505	221,511	0
25-1436	Engineering Assistant 3	FT	A	GP	Fairbanks	203	21L	12.0		108,947	8,974	16,761	72,836	207,518	0
25-1437	Engineering Assistant 3	FT	A	GP	Fairbanks	203	21G	12.0		98,066	7,000	0	61,013	166,079	0
25-1439	Engineering Assistant 3	FT	A	GP	Fairbanks	203	21N	12.0		116,123	8,768	6,699	71,602	203,192	0
25-1441	Engineering Assistant 2	FT	A	GP	Fairbanks	203	19B / C	12.0		73,159	5,621	5,583	52,749	137,112	0
25-1443	Engineering Assistant 2	FT	A	GP	Fairbanks	203	19K / L	12.0		93,629	7,696	14,175	65,178	180,678	0
25-1444	Engineer/Architect 2	FT	A	GP	Fairbanks	203	23F / J	12.0		113,916	8,132	0	67,793	189,841	0
25-1446	Engineering Assistant 3	FT	A	GP	Fairbanks	203	21C / D	12.0		87,855	6,977	9,886	60,874	165,592	0
25-1447	Engineering Assistant 3	FT	A	GP	Fairbanks	203	21F / J	12.0		99,169	8,122	14,604	67,731	189,626	0
25-1449	Engineering Assistant 2	FT	A	GP	Fairbanks	203	19E / F	12.0		82,387	6,762	12,339	59,585	161,073	0
25-1451	Administrative Assistant 2	FT	A	GP	Fairbanks	203	14O / P	12.0		76,164	5,846	5,727	54,095	141,832	12,339
25-1455	Engineering Assistant 3	FT	A	GP	Fairbanks	203	21G / J	12.0		102,200	8,418	15,723	69,506	195,847	0
25-1457	Engineering Assistant 2	FT	A	GP	Fairbanks	203	19B / C	12.0		74,898	6,144	11,166	55,880	148,088	0
25-1459	Engineering Assistant 2	FT	A	GP	Fairbanks	203	19J / K	12.0		89,474	7,367	13,728	63,210	173,779	0
25-1460	Right-Of-Way Agent 3	FT	A	GP	Fairbanks	203	18F / G	12.0		79,896	6,130	5,980	55,800	147,806	0
25-1461	Administrative Assistant 2	FT	A	GP	Fairbanks	203	14B / C	12.0		51,404	3,951	3,937	42,740	102,032	8,877
25-1464	Eng Tech Jrny	PT	A	LL	Fairbanks	2EE	54K	8.0		44,503	0	9,630	36,001	90,134	0
25-1465	Eng Tech Jrny	PT	A	LL	Fairbanks	2EE	54A	8.0		35,367	0	7,653	31,248	74,268	0
25-1467	Eng Tech Jrny	PT	A	LL	Nome	2II	54C / D	8.0		40,485	0	13,090	35,762	89,337	0
25-1468	Eng Tech Jrny	PT	A	LL	Fairbanks	2EE	54J / K	8.0		43,068	0	9,303	35,247	87,618	0
25-1469	Eng Tech Jrny	PT	A	LL	Fairbanks	2EE	54A	8.0		35,367	0	7,653	31,248	74,268	0
25-1473	Engineering Assistant 3	FT	A	GP	Fairbanks	203	21G	12.0		98,066	7,943	13,201	66,660	185,870	0
25-1474	Eng Tech Jrny	PT	A	LL	Fairbanks	2EE	54R	8.0		56,815	0	12,294	42,406	111,515	0
25-1479	Eng Tech Jrny	PT	A	LL	Fairbanks	2EE	54D	8.0		38,944	0	8,427	33,109	80,480	0
25-1480	E/T Subjrny 3	PT	A	LL	Fairbanks	2EE	55C	8.0		35,825	0	7,752	31,486	75,063	0
25-1482	E/T Subjrny 3	PT	A	LL	Nome	2II	55C / D	6.0		29,620	0	12,478	27,642	69,740	0

Note: If a position is split, an asterisk (*) will appear in the Split/Count column. If the split position is also counted in the component, two asterisks (**) will appear in this column. [No valid job title] appearing in the Job Class Title indicates that the PCN has an invalid class code or invalid range for the class code effective date of this scenario.

Personal Services Expenditure Detail
Department of Transportation and Public Facilities

Scenario: FY2025 Governor (20959)
Component: Northern Region Design, Engineering, and Construction (3375)
RDU: Design, Engineering and Construction (526)

PCN	Job Class Title	Time Status	Retire Code	Barg Unit	Location	Salary Sched	Range / Step	Comp Months	Split / Count	Annual Salaries	COLA	Premium Pay	Annual Benefits	Total Costs	UGF Amount
25-1484	E/T Subjrny 3	PT	A	LL	Fairbanks	2EE	55C	8.0		35,825	0	7,752	31,486	75,063	0
25-1485	E/T Subjrny 3	PT	A	LL	Fairbanks	2EE	55J	8.0		40,829	0	8,835	34,090	83,754	0
25-1486	E/T Subjrny 3	PT	A	LL	Fairbanks	2EE	55B / C	8.0		35,109	0	7,509	31,076	73,694	0
25-1487	E/T Subjrny 2	PT	A	LL	Nome	2II	57B	6.0		25,257	0	7,287	23,555	56,099	0
25-1490	Eng Tech Jrny	PT	A	LL	Fairbanks	2EE	54F	9.5		49,325	0	8,988	40,198	98,511	0
25-1491	Driller, Sub-Journey	PT	A	LL	Fairbanks	2EE	54A	9.5		41,998	0	11,479	38,130	91,607	0
25-1492	E/T Subjrny 3	PT	A	LL	Fairbanks	2EE	55C / D	8.0		36,087	0	7,752	31,598	75,437	0
25-1494	Maint Gen Jrny	FT	A	LL	Fairbanks	2EE	54J / K	12.0		64,961	0	13,954	53,025	131,940	0
25-1500	Survey, Journey	PT	A	LL	Fairbanks	2EE	54J / K	9.5		51,714	0	13,954	43,344	109,012	0
25-1502	E/T Subjrny 2	PT	A	LL	Fairbanks	2EE	57B	6.0		23,416	0	6,756	22,541	52,713	0
25-1506	E/T Subjrny 2	PT	A	LL	Nome	2II	57B	6.0		25,257	0	7,287	23,555	56,099	0
25-1507	E/T Subjrny 2	PT	A	LL	Fairbanks	2EE	57B / C	6.0		24,011	0	6,756	22,795	53,562	0
25-1508	E/T Subjrny 2	PT	A	LL	Fairbanks	2EE	57B	6.0		23,416	0	6,756	22,541	52,713	0
25-1511	Engineering Assistant 1	FT	A	GP	Fairbanks	203	17A	12.0		60,879	5,014	9,366	49,114	124,373	0
25-1518	E/T Subjrny 2	PT	A	LL	Fairbanks	2EE	57B	6.0		23,416	0	6,756	22,541	52,713	0
25-1519	E/T Subjrny 2	PT	A	LL	Fairbanks	2EE	57B	6.0		23,416	0	6,756	22,541	52,713	0
25-1524	Eng Tech Jrny	PT	A	LL	Fairbanks	2EE	54M	8.0		47,706	0	10,323	37,667	95,696	0
25-1525	E/T Subjrny 2	PT	A	LL	Fairbanks	2EE	57B	6.0		23,416	0	6,756	22,541	52,713	0
25-1527	Engineer/Architect 4	FT	A	SS	Fairbanks	203	26M / N	12.0		158,842	0	0	90,989	249,831	0
25-1529	Env Imp A Mgr 1	FT	A	SS	Fairbanks	203	21N	12.0		117,146	0	0	73,156	190,302	0
25-1530	Engineering Assistant 3	FT	A	GP	Fairbanks	203	21O	12.0		119,906	9,218	9,223	74,299	212,646	0
25-1531	Right-Of-Way Agent 6	FT	A	SS	Fairbanks	203	23D / E	12.0		109,018	0	0	69,680	178,698	0
25-1532	Environmental Impact Analyst 3	FT	A	GP	Fairbanks	203	19F / G	12.0		83,465	7,100	15,990	61,608	168,163	0
25-1533	Tech Eng/Arch 1	FT	A	GP	Fairbanks	203	24O / P	12.0		148,803	10,622	0	82,714	242,139	0
25-1534	Engineering Assistant 3	FT	A	GP	Fairbanks	203	21A	12.0		80,204	6,386	9,254	57,332	153,176	0
25-1536	Environmental Impact Analyst 3	FT	A	GP	Fairbanks	203	19M	12.0		98,222	8,360	18,888	69,159	194,629	0
25-1537	Engineer/Architect 1	FT	A	GP	Fairbanks	203	22C / D	12.0		94,705	7,264	7,047	62,590	171,606	0
25-1538	Engineering Assistant 2	FT	A	GP	Fairbanks	203	19D / E	12.0		78,545	6,247	8,970	56,501	150,263	0
25-1540	Engineering Associate	FT	A	GP	Juneau	205	21J	12.0		104,169	8,580	16,026	70,478	199,253	0
25-1541	Engineering Assistant 2	FT	A	GP	Fairbanks	203	19F / G	12.0		85,155	6,992	12,792	60,963	165,902	0
25-1542	Engineering Assistant 2	FT	A	GP	Fairbanks	203	19J	12.0		89,232	7,168	11,188	62,020	169,608	0
25-1544	Right-Of-Way Agent 3	FT	A	GP	Fairbanks	203	18G	12.0		80,204	6,166	6,169	56,012	148,551	0
25-1545	Environmental Impact Analyst 3	FT	A	GP	Fairbanks	203	19J	12.0		89,232	7,595	17,160	64,575	178,562	0
25-1546	Engineering Assistant 1	FT	A	GP	Fairbanks	203	17B	12.0		63,180	5,031	7,290	49,211	124,712	0
25-1548	Engineering Assistant 2	FT	A	GP	Delta Junction	200	19F / G	12.0		82,061	6,745	12,420	59,480	160,706	0

Note: If a position is split, an asterisk (*) will appear in the Split/Count column. If the split position is also counted in the component, two asterisks (**) will appear in this column. [No valid job title] appearing in the Job Class Title indicates that the PCN has an invalid class code or invalid range for the class code effective date of this scenario.

Personal Services Expenditure Detail
Department of Transportation and Public Facilities

Scenario: FY2025 Governor (20959)
Component: Northern Region Design, Engineering, and Construction (3375)
RDU: Design, Engineering and Construction (526)

PCN	Job Class Title	Time Status	Retire Code	Barg Unit	Location	Salary Sched	Range / Step	Comp Months	Split / Count	Annual Salaries	COLA	Premium Pay	Annual Benefits	Total Costs	UGF Amount
25-1551	Engineering Associate	FT	A	GP	Fairbanks	203	21M / N	12.0		114,907	8,203	0	68,216	191,326	0
25-1555	Engineering Assistant 2	FT	A	GP	Fairbanks	203	19B / C	12.0		73,718	6,059	11,166	55,376	146,319	0
25-1556	Environmental Impact Analyst 1	FT	A	GP	Fairbanks	203	15B / C	12.0		56,358	4,777	10,560	47,691	119,386	0
25-1557	Engineering Assistant 2	FT	A	GP	Fairbanks	203	19A / B	12.0		71,672	5,887	10,794	54,341	142,694	0
25-1558	Drafting Technician 3	FT	A	GP	Fairbanks	203	15G / J	12.0		66,633	5,476	10,080	51,881	134,070	0
25-1559	Administrative Officer 1	FT	A	GP	Fairbanks	203	17C / D	12.0		65,712	5,410	10,080	51,487	132,689	11,544
25-1565	Survey Lead	PT	A	LL	Fairbanks	2EE	53L / M	9.5		59,350	0	15,867	47,428	122,645	0
25-1566	E/T Subjrny 2	PT	A	LL	Fairbanks	2EE	57B	6.0		23,416	0	6,756	22,541	52,713	0
25-1569	E/T Subjrny 2	PT	A	LL	Fairbanks	2EE	57B	6.0		23,416	0	6,756	22,541	52,713	0
25-1570	Engineering Assistant 3	FT	A	GP	Fairbanks	203	21C / D	12.0		88,352	6,307	0	56,859	151,518	0
25-1571	Land Surveyor 1	FT	A	GP	Fairbanks	203	21A	12.0		80,204	5,725	0	53,374	139,303	0
25-1572	Right-Of-Way Agent 3	FT	A	GP	Fairbanks	203	18J / K	12.0		85,664	6,574	6,424	58,457	157,119	0
25-1573	Engineering Associate	FT	A	GP	Fairbanks	203	21G / J	12.0		100,787	8,272	15,087	68,630	192,776	0
25-1576	Engineering Assistant 3	FT	A	GP	Nome	237	21L / M	12.0		147,058	11,570	22,293	91,401	272,322	0
25-1578	Engineering Assistant 3	FT	A	GP	Fairbanks	203	21K / L	12.0		106,087	7,573	0	64,444	178,104	0
25-1579	Engineering Assistant 2	FT	A	GP	Fairbanks	203	19D	12.0		77,747	6,190	8,970	56,160	149,067	0
25-1580	Engineering Assistant 2	FT	A	GP	Fairbanks	203	19L	12.0		95,121	7,835	14,634	66,013	183,603	0
25-1581	Engineer/Architect 3	FT	A	SS	Fairbanks	203	25P	12.0		165,999	0	0	94,050	260,049	0
25-1582	Engineering Assistant 2	FT	A	GP	Fairbanks	203	19G	12.0		85,683	7,057	13,182	61,355	167,277	0
25-1596	E/T Subjrny 2	PT	A	LL	Fairbanks	2EE	57B / C	6.0		23,568	0	6,756	22,606	52,930	0
25-1599	Engineering Assistant 3	FT	A	GP	Fairbanks	203	21B / C	12.0		84,289	6,017	0	55,121	145,427	0
25-1602	Engineer/Architect 3	FT	A	SS	Fairbanks	203	25M	12.0		149,365	0	0	86,936	236,301	0
25-1603	Engineer/Architect 3	FT	A	SS	Fairbanks	203	25M / N	12.0		152,610	0	0	88,324	240,934	0
25-1604	Environmental Impact Analyst 3	FT	A	GP	Fairbanks	203	19B / C	12.0		74,818	6,337	13,957	57,040	152,152	0
25-1607	Engineering Assistant 3	FT	A	GP	Fairbanks	203	21G	12.0		98,066	7,000	0	61,013	166,079	0
25-1609	Engineering Associate	FT	A	GP	Fairbanks	203	21F / G	12.0		96,627	7,940	14,604	66,644	185,815	0
25-1611	Engineering Assistant 3	FT	A	GP	Fairbanks	203	21L / M	12.0		109,241	7,798	0	65,793	182,832	0
25-1612	Survey Lead	PT	A	LL	Fairbanks	2EE	53N	9.5		62,248	0	17,014	49,158	128,420	0
25-1615	E/T Subjrny 3	PT	A	LL	Fairbanks	2EE	55C	8.0		35,825	0	7,752	31,486	75,063	0
25-1622	Engineering Assistant 2	FT	A	GP	Fairbanks	203	19A / B	12.0		72,519	5,755	8,095	53,549	139,918	0
25-1624	Engineering Geologist 2	FT	A	GP	Fairbanks	203	18A / B	12.0		66,575	5,832	15,120	54,012	141,539	0
25-1625	Engineering Assistant 2	FT	A	GP	Fairbanks	203	19B / C	12.0		74,898	6,144	11,166	55,880	148,088	0
25-1627	Engineering Assistant 2	FT	A	GP	Nome	237	19C / D	12.0		101,320	8,876	23,013	72,248	205,457	0
25-1630	Procurement Specialist 3	FT	A	SS	Fairbanks	203	18R	12.0		109,158	0	7,872	73,106	190,136	0
25-1632	Engineering Assistant 3	FT	A	GP	Anchorage	200	21G / J	12.0		95,285	7,848	14,649	66,089	183,871	0
25-1634	Engineer/Architect 5	FT	A	SS	Fairbanks	203	27N / O	12.0		166,944	0	0	94,455	261,399	0
25-1635	Engineering Geologist 2	FT	A	GP	Fairbanks	203	18C / D	12.0		70,967	6,222	16,191	56,348	149,728	0

Note: If a position is split, an asterisk (*) will appear in the Split/Count column. If the split position is also counted in the component, two asterisks (**) will appear in this column. [No valid job title] appearing in the Job Class Title indicates that the PCN has an invalid class code or invalid range for the class code effective date of this scenario.

Personal Services Expenditure Detail
Department of Transportation and Public Facilities

Scenario: FY2025 Governor (20959)
Component: Northern Region Design, Engineering, and Construction (3375)
RDU: Design, Engineering and Construction (526)

PCN	Job Class Title	Time Status	Retire Code	Barg Unit	Location	Salary Sched	Range / Step	Comp Months	Split / Count	Annual Salaries	COLA	Premium Pay	Annual Benefits	Total Costs	UGF Amount
25-1636	Engineering Geologist 2	FT	A	GP	Fairbanks	203	18J	12.0		83,519	7,109	16,061	61,661	168,350	0
25-1637	Engineering Assistant 2	FT	A	GP	Fairbanks	203	19B / C	12.0		72,599	5,980	11,166	54,897	144,642	0
25-1639	Engineering Assistant 3	FT	A	GP	Fairbanks	203	21F / G	12.0		94,978	7,562	10,953	64,377	177,870	0
25-1642	Driller, Journey	FT	A	LL	Anchorage	2AA	53K / L	12.0		67,614	0	19,296	56,444	143,354	0
25-1643	Eng Tech Jrny	PT	A	LL	Fairbanks	2EE	54D	9.5		46,246	0	8,427	38,641	93,314	0
25-1644	Driller, Sub-Journey	PT	A	LL	Fairbanks	2EE	54C	9.5		44,781	0	12,240	39,645	96,666	0
25-1645	Driller, Journey	FT	A	LL	Fairbanks	2EE	53K / L	12.0		73,222	0	20,430	59,328	152,980	0
25-1647	Tech Eng/Arch 1	FT	A	GP	Fairbanks	203	24F / G	12.0		119,264	8,514	0	70,080	197,858	0
25-1648	Eng Tech Jrny	PT	A	LL	Fairbanks	2EE	54J / K	9.5		51,544	0	9,303	41,282	102,129	0
25-1656	Engineering Assistant 3	FT	A	GP	Fairbanks	203	21G	12.0		98,066	8,077	15,087	67,466	188,696	0
25-1657	Engineering Assistant 3	FT	A	GP	Fairbanks	203	21K	12.0		105,515	8,691	16,233	71,142	201,581	0
25-1658	Engineering Assistant 3	FT	A	GP	Fairbanks	203	21J	12.0		102,200	8,137	11,792	67,825	189,954	0
25-1659	Engineering Assistant 2	FT	A	GP	Fairbanks	203	19B / C	12.0		72,599	5,980	11,166	54,897	144,642	0
25-1660	Engineering Assistant 2	FT	A	GP	Fairbanks	203	19D / E	12.0		78,033	6,424	11,961	57,561	153,979	0
25-1661	Engineering Assistant 2	FT	A	GP	Fairbanks	203	19B / C	12.0		73,758	6,062	11,166	55,393	146,379	0
25-1667	Eng Tech Jrny	PT	A	LL	Fairbanks	2EE	54B	9.5		43,365	0	7,902	37,184	88,451	0
25-1668	Eng Tech Jrny	PT	A	LL	Nome	2II	54B / C	9.5		47,222	0	12,703	40,887	100,812	0
25-1673	Engineering Associate	FT	A	GP	Fairbanks	203	21K	12.0		105,515	7,532	0	64,199	177,246	0
25-1674	Accounting Technician 2	FT	A	GP	Fairbanks	203	14J / K	12.0		65,313	5,011	4,881	49,093	124,298	0
25-1677	Engineer/Architect 3	FT	A	SS	Fairbanks	203	25M / N	12.0		153,340	0	0	88,636	241,976	0
25-1678	E/T Subjrny 3	PT	A	LL	Fairbanks	2EE	55B	8.0		34,702	0	7,509	30,902	73,113	0
25-1682	Survey, Sub-Journey 2	PT	A	LL	Fairbanks	2EE	56J	9.5		45,736	0	12,501	40,165	98,402	0
25-1683	Engineering Assistant 2	FT	A	GP	Fairbanks	203	19B / C	12.0		73,478	5,843	8,374	54,079	141,774	0
25-1684	E/T Subjrny 2	PT	A	LL	Fairbanks	2EE	57B / C	6.0		24,024	0	6,756	22,801	53,581	0
25-1688	Engineering Assistant 2	FT	A	GG	Fairbanks	203	19B / C	12.0		74,238	6,097	11,166	55,598	147,099	0
25-1689	E/T Subjrny 2	PT	A	LL	Fairbanks	2EE	57A / B	7.0		27,307	0	6,546	25,721	59,574	0
25-1693	E/T Subjrny 2	PT	A	LL	Fairbanks	2EE	57B	7.0		27,319	0	6,756	25,816	59,891	0
25-1694	Survey, Sub-Journey 2	PT	A	LL	Fairbanks	2EE	56M	9.5		50,741	0	13,869	42,891	107,501	0
25-1700	E/T Subjrny 2	PT	A	LL	Fairbanks	2EE	57A / B	7.0		27,004	0	6,546	25,592	59,142	0
25-1701	Engineering Assistant 2	FT	A	GG	Fairbanks	203	19F / G	12.0		84,838	6,969	12,792	60,827	165,426	0
25-1704	Engineering Assistant 2	FT	A	GP	Fairbanks	203	19C	12.0		74,978	5,970	8,651	54,839	144,438	0
25-1705	Engineering Associate	FT	A	GP	Fairbanks	203	21F / G	12.0		95,397	7,852	14,604	66,118	183,971	0
25-1707	Engineer/Architect 3	FT	A	SS	Fairbanks	203	25F / J	12.0		135,522	0	0	81,015	216,537	0
25-1708	Engineer/Architect 3	FT	A	SS	Fairbanks	203	25F	12.0		131,435	0	0	79,267	210,702	0
25-1710	Engineering Assistant 3	FT	A	GP	Fairbanks	203	21A / B	12.0		82,854	6,795	12,339	59,785	161,773	0
25-1712	Engineering Assistant 3	FT	A	GP	Fairbanks	203	21A / B	12.0		82,731	6,346	6,169	57,093	152,339	0
25-1715	Eng Tech Jrny	PT	A	LL	Nome	2II	54F	8.0		44,157	0	14,332	37,864	96,353	0
25-1729	Right-Of-Way Agent 3	FT	A	GP	Fairbanks	203	18G / J	12.0		82,193	6,308	6,169	56,863	151,533	0

Note: If a position is split, an asterisk (*) will appear in the Split/Count column. If the split position is also counted in the component, two asterisks (**) will appear in this column. [No valid job title] appearing in the Job Class Title indicates that the PCN has an invalid class code or invalid range for the class code effective date of this scenario.

Personal Services Expenditure Detail
Department of Transportation and Public Facilities

Scenario: FY2025 Governor (20959)
Component: Northern Region Design, Engineering, and Construction (3375)
RDU: Design, Engineering and Construction (526)

PCN	Job Class Title	Time Status	Retire Code	Barg Unit	Location	Salary Sched	Range / Step	Comp Months	Split / Count	Annual Salaries	COLA	Premium Pay	Annual Benefits	Total Costs	UGF Amount
25-1731	Engineer/Architect 3	FT	A	GP	Fairbanks	203	25B / C	12.0		112,311	8,915	12,579	72,486	206,291	0
25-1732	Administrative Assistant 2	FT	A	GP	Fairbanks	203	14R / S	12.0		84,327	6,479	6,430	57,887	155,123	12,696
25-1737	Procurement Specialist 1	FT	A	GP	Fairbanks	203	14Q / R	12.0		62,632	0	0	45,858	108,490	0
25-1740	Land Surveyor 1	FT	A	GP	Fairbanks	203	21P	12.0		124,400	10,931	28,729	84,564	248,624	0
25-1742	Engineering Assistant 3	FT	A	GP	Fairbanks	203	21K / L	12.0		106,087	8,442	12,174	69,651	196,354	0
25-1745	E/T Subjrnly 2	PT	A	LL	Fairbanks	2EE	57B / C	7.0		27,534	0	6,756	25,908	60,198	0
25-1748	Eng Tech Jrny	PT	A	LL	Fairbanks	2EE	54B	8.0		36,518	0	7,902	31,847	76,267	0
25-1752	Accountant 4	FT	A	SS	Fairbanks	203	20T	12.0		137,519	0	0	81,869	219,388	0
25-1756	Procurement Specialist 2	FT	A	GP	Fairbanks	203	16B / C	12.0		59,208	4,550	4,537	46,334	114,629	0
25-1757	OS Dupl Mach Op	FT	A	GP	Fairbanks	203	12K	12.0		56,960	4,066	0	43,432	104,458	0
25-1758	Eng Tech Jrny	PT	A	LL	Fairbanks	2EE	54C	8.0		37,710	0	8,160	32,467	78,337	0
25-1761	Engineering Assistant 2	FT	A	GP	Fairbanks	203	19A / B	12.0		71,692	5,888	10,794	54,350	142,724	0
25-1762	E/T Subjrnly 3	PT	A	LL	Fairbanks	2EE	55C	8.0		35,825	0	7,752	31,486	75,063	0
25-1765	Engineering Assistant 3	FT	A	GP	Fairbanks	203	21P / Q	12.0		129,032	10,629	19,866	82,754	242,281	0
25-1766	Engineer/Architect 3	FT	A	SS	Fairbanks	203	25M	12.0		149,365	0	0	86,936	236,301	0
25-1767	Office Assistant 2	FT	A	GP	Fairbanks	203	10D / E	12.0		42,700	3,048	0	37,333	83,081	0
25-1768	Land Surveyor 1	FT	A	GP	Fairbanks	203	21B	12.0		83,148	7,305	19,188	62,840	172,481	0
25-1770	Drafting Technician 3	FT	A	GP	Fairbanks	203	15M	12.0		75,056	6,182	11,547	56,111	148,896	0
25-1771	Environmental Impact Analyst 3	FT	A	GP	Fairbanks	203	19B / C	12.0		72,879	6,199	13,957	56,210	149,245	0
25-1775	Driller, Journey	PT	A	LL	Fairbanks	2EE	53L / M	9.5		59,783	0	21,156	49,875	130,814	0
25-1776	E/T Subjrnly 3	PT	A	LL	Fairbanks	2EE	55C	9.5		42,542	0	11,628	38,426	92,596	0
25-1777	Engineering Assistant 2	FT	A	GP	Fairbanks	203	19B / C	12.0		73,379	5,836	8,374	54,036	141,625	0
25-1780	Engineering Assistant 3	FT	A	GP	Nome	237	21L / M	12.0		145,100	11,455	22,293	90,665	269,513	0
25-1781	Engineering Assistant 3	FT	A	GP	Fairbanks	203	21B / C	12.0		85,430	7,240	15,990	62,448	171,108	0
25-1782	Engineering Assistant 3	FT	A	GP	Fairbanks	203	21G	12.0		98,066	8,077	15,087	67,466	188,696	0
25-1784	Engineering Assistant 3	FT	A	GP	Fairbanks	203	21G	12.0		98,066	7,943	13,201	66,660	185,870	0
25-1785	Engineering Associate	FT	A	GP	Nome	237	21K	12.0		140,342	11,417	21,591	88,329	261,679	0
25-1786	E/T Subjrnly 3	PT	A	LL	Nome	2II	55B / C	7.5		35,298	0	12,114	32,323	79,735	0
25-1787	E/T Subjrnly 2	PT	A	LL	Fairbanks	2EE	57B	7.5		29,270	0	6,756	27,454	63,480	0
25-1789	E/T Subjrnly 3	PT	A	LL	Nome	2II	55Q / R	7.5		51,481	0	17,743	41,652	110,876	0
25-1790	E/T Subjrnly 2	PT	A	LL	Nome	2II	57B	6.0		25,257	0	7,287	23,555	56,099	0
25-1794	E/T Subjrnly 2	PT	A	LL	Nome	2II	57B	6.0		25,257	0	7,287	23,555	56,099	0
25-1795	Engineer/Architect 2	FT	A	SS	Fairbanks	203	23K / L	12.0		124,668	0	13,200	82,019	219,887	0
25-1796	Engineering Assistant 3	FT	A	GP	Fairbanks	203	21O	12.0		119,906	9,876	18,447	78,244	226,473	0
25-1797	Engineering Associate	FT	A	GP	Fairbanks	203	21E / F	12.0		92,329	7,597	14,094	64,588	178,608	0
25-1802	Engineering Assistant 2	FT	A	GP	Fairbanks	203	19A / B	12.0		72,196	5,924	10,794	54,565	143,479	0
25-1803	E/T Subjrnly 3	PT	A	LL	Nome	2II	55B / C	7.5		35,410	0	12,114	32,371	79,895	0
25-1807	Engineering Associate	FT	A	GP	Nome	237	21D / E	12.0		120,117	9,548	13,630	76,274	219,569	0

Note: If a position is split, an asterisk (*) will appear in the Split/Count column. If the split position is also counted in the component, two asterisks (**) will appear in this column. [No valid job title] appearing in the Job Class Title indicates that the PCN has an invalid class code or invalid range for the class code effective date of this scenario.

Personal Services Expenditure Detail
Department of Transportation and Public Facilities

Scenario: FY2025 Governor (20959)
Component: Northern Region Design, Engineering, and Construction (3375)
RDU: Design, Engineering and Construction (526)

PCN	Job Class Title	Time Status	Retire Code	Barg Unit	Location	Salary Sched	Range / Step	Comp Months	Split / Count	Annual Salaries	COLA	Premium Pay	Annual Benefits	Total Costs	UGF Amount
25-1812	Engineering Assistant 2	FT	A	GP	Fairbanks	203	19J / K	12.0		89,474	7,367	13,728	63,210	173,779	0
25-1816	Engineering Associate	FT	A	GP	Nome	237	21O	12.0		176,429	13,909	27,163	103,947	321,448	0
25-1819	E/T Subjrny 2	PT	A	LL	Nome	21I	57A	7.0		28,617	0	7,077	26,509	62,203	0
25-1822	Engineering Assistant 2	FT	A	GP	Nome	237	19F / G	12.0		112,561	9,250	17,016	74,491	213,318	0
25-1823	Eng Tech Jrny	PT	A	LL	Nome	21I	54F	8.0		44,157	0	14,332	37,864	96,353	0
25-1825	Engineering Assistant 3	FT	A	GP	Nome	237	21F / G	12.0		128,533	10,215	14,568	80,275	233,591	0
25-1827	Engineer/Architect 3	FT	A	SS	Fairbanks	203	25K / L	12.0		141,405	0	0	83,532	224,937	0
25-1838	Engineer/Architect 4	FT	A	SS	Fairbanks	203	26J / K	12.0		144,953	0	0	85,049	230,002	0
25-1843	Engineering Assistant 2	FT	A	GP	Fairbanks	203	19E / F	12.0		80,326	6,615	12,339	58,703	157,983	0
25-1850	Environmental Impact Analyst 3	FT	A	GP	Fairbanks	203	19K	12.0		92,138	7,842	17,718	66,056	183,754	0
25-1852	Eng Tech Jrny	PT	A	LL	Fairbanks	2EE	54C	9.5		44,781	0	8,160	37,900	90,841	0
25-1854	E/T Subjrny 3	PT	A	LL	Fairbanks	2EE	55D	8.0		36,989	0	8,004	32,092	77,085	0
25-1857	E/T Subjrny 3	PT	A	LL	Fairbanks	2EE	55B / C	8.0		34,870	0	7,509	30,974	73,353	0
25-1862	Eng Tech Jrny	PT	A	LL	Fairbanks	2EE	54D / E	9.5		46,676	0	8,427	38,825	93,928	0
25-1869	Accounting Technician 3	FT	A	GP	Fairbanks	203	16C / D	12.0		61,799	4,746	4,683	47,505	118,733	0
25-1871	Survey Lead	PT	A	LL	Fairbanks	2EE	53N / O	9.5		63,184	0	17,014	49,558	129,756	0
25-1875	E/T Subjrny 3	PT	A	LL	Fairbanks	2EE	55F	8.0		39,443	0	8,535	33,369	81,347	0
25-1876	E/T Subjrny 3	PT	A	LL	Fairbanks	2EE	55B / C	8.0		34,828	0	7,509	30,956	73,293	0
25-1880	E/T Subjrny 2	PT	A	LL	Fairbanks	2EE	57B	7.0		27,319	0	6,756	25,816	59,891	0
25-2410	Environmental Impact Analyst 2	FT	A	GP	Fairbanks	203	17B / C	12.0		64,448	5,468	12,150	51,832	133,898	0
25-2418	Tech Eng/Arch 1	FT	A	GP	Fairbanks	203	24C / D	12.0		107,391	7,666	0	65,002	180,059	0
25-3401	Engineering Associate	FT	A	GP	Fairbanks	203	21N	12.0		116,123	9,565	17,865	76,377	219,930	0
25-3402	Engineering Assistant 3	FT	A	GP	Nome	237	21C / D	12.0		114,167	9,401	17,532	75,398	216,498	0
25-3405	Engineering Assistant 2	FT	A	GP	Fairbanks	203	19B / C	12.0		73,718	6,059	11,166	55,376	146,319	0
25-3449	Engineering Assistant 3	FT	A	GP	Fairbanks	203	21B / C	12.0		84,268	6,700	9,594	59,215	159,777	0
25-3450	Engineering Assistant 3	FT	A	GP	Fairbanks	203	21M / N	12.0		112,780	8,977	12,978	72,857	207,592	0
25-3452	Engineer/Architect 1	FT	A	GP	Fairbanks	203	22G / J	12.0		108,345	7,734	0	65,410	181,489	0
25-3453	Engineering Associate	FT	A	GP	Fairbanks	203	21D / E	12.0		90,519	7,193	10,248	62,169	170,129	0
25-3516	Engineer/Architect 3	FT	A	SS	Fairbanks	203	25R	12.0		178,651	0	0	98,790	277,441	0
25-3521	Engineering Assistant 2	FT	A	GP	Fairbanks	203	19J	12.0		89,232	7,350	13,728	63,107	173,417	0
25-3525	Engineering Assistant 2	FT	A	GG	Fairbanks	203	19B / C	12.0		72,979	6,007	11,166	55,059	145,211	0
25-3526	Engineering Assistant 2	FT	A	GP	Fairbanks	203	19B / C	12.0		73,758	6,062	11,166	55,393	146,379	0
25-3527	Engineering Assistant 2	FT	A	GP	Fairbanks	203	19J / K	12.0		90,806	7,462	13,728	63,780	175,776	0
25-3528	Engineering Assistant 1	FT	A	GP	Fairbanks	203	17A / B	12.0		61,243	5,040	9,366	49,270	124,919	0
25-3574	Engineer/Architect 1	FT	A	GP	Fairbanks	203	22J / K	12.0		109,769	7,836	0	66,019	183,624	0
25-3593	Environmental Impact Analyst 1	FT	A	GP	Fairbanks	203	15A / B	12.0		54,000	4,581	10,177	46,519	115,277	0

Note: If a position is split, an asterisk (*) will appear in the Split/Count column. If the split position is also counted in the component, two asterisks (**) will appear in this column. [No valid job title] appearing in the Job Class Title indicates that the PCN has an invalid class code or invalid range for the class code effective date of this scenario.

Personal Services Expenditure Detail
Department of Transportation and Public Facilities

Scenario: FY2025 Governor (20959)
Component: Northern Region Design, Engineering, and Construction (3375)
RDU: Design, Engineering and Construction (526)

PCN	Job Class Title	Time Status	Retire Code	Barg Unit	Location	Salary Sched	Range / Step	Comp Months	Split / Count	Annual Salaries	COLA	Premium Pay	Annual Benefits	Total Costs	UGF Amount
25-3606	Engineer/Architect 3	FT	A	SS	Fairbanks	203	25D	12.0		122,283	0	0	75,353	197,636	0
25-3607	Engineer/Architect 2	FT	A	GP	Fairbanks	203	23J / K	12.0		119,958	8,563	0	70,377	198,898	0
25-3608	Engineer/Architect 1	FT	A	GP	Fairbanks	203	22G	12.0		105,105	7,503	0	64,024	176,632	0
25-3694	Right-Of-Way Agent 2	FT	A	GP	Fairbanks	203	16G / J	12.0		71,856	5,515	5,397	52,112	134,880	0
25-3730	Engineering Assistant 3	FT	A	GP	Fairbanks	203	21M	12.0		112,476	9,264	17,304	74,578	213,622	0
25-3731	Engineering Assistant 3	FT	A	GP	Fairbanks	203	21G	12.0		98,066	8,077	15,087	67,466	188,696	0
25-3732	Engineering Assistant 3	FT	A	GP	Fairbanks	203	21J / K	12.0		103,415	8,505	15,723	70,026	197,669	0
25-3733	Engineering Assistant 3	FT	A	GP	Nome	237	21C / D	12.0		114,167	9,401	17,532	75,398	216,498	0
25-IN1005	E/T Subjrnly 1	NP	N	LL	Fairbanks	2EE	59A	6.0		20,401	0	11,772	4,408	36,581	0
25-IN1006	E/T Subjrnly 1	NP	N	LL	Fairbanks	2EE	59A	6.0		20,401	0	11,772	4,408	36,581	0
25-IN1007	E/T Subjrnly 1	NP	N	LL	Fairbanks	2EE	59A	6.0		20,401	0	11,772	4,408	36,581	0
25-IN1008	E/T Subjrnly 1	NP	N	LL	Fairbanks	2EE	59A	6.0		20,401	0	11,772	4,408	36,581	0
25-IN1014	E/T Subjrnly 2	NP	N	LL	Fairbanks	2EE	57A	6.0		22,688	0	13,092	4,902	40,682	0
25-IN1202	College Intern 4	NP	N	EE	Fairbanks	N03	12A	9.0		32,541	0	8,343	5,601	46,485	0
25-IN1204	College Intern 3	NP	N	EE	Fairbanks	N03	10A	9.0		28,855	0	7,398	4,967	41,220	0

	Total Positions	New	Deleted	Total Salary Costs:	Total COLA:	Total Premium Pay:	Total Benefits:
				22,734,173	1,142,079	2,399,145	15,496,197
Full Time Positions:	201	0	0				
Part Time Positions:	67	0	0				
Non Permanent Positions:	7	0	0				
Positions in Component:	275	0	0				
				Total Pre-Vacancy:	41,771,594		
				Minus Vacancy Adjustment of 5.87%:	(2,453,294)		
				Total Post-Vacancy:	39,318,300		
				Plus Lump Sum Premium Pay:	0		
				Personal Services Line 100:	39,318,300		

PCN Funding Sources:	Pre-Vacancy	Post-Vacancy	Percent
1004 Unrestricted General Fund Receipts	62,653	58,973	0.15%
1005 General Fund/Program Receipts	388,628	365,804	0.93%
1007 Interagency Receipts	175,386	165,085	0.42%
1039 Unallocated Indirect Cost Recovery	5,992,239	5,640,308	14.35%
1061 Capital Improvement Project Receipts	35,120,565	33,057,894	84.08%
1232 In-State Natural Gas Pipeline Fund--Interagency	32,123	30,236	0.08%
Total PCN Funding:	41,771,594	39,318,300	100.00%

Note: If a position is split, an asterisk (*) will appear in the Split/Count column. If the split position is also counted in the component, two asterisks (**) will appear in this column. [No valid job title] appearing in the Job Class Title indicates that the PCN has an invalid class code or invalid range for the class code effective date of this scenario.

Department of Transportation & Public Facilities

Northern Region Design, Engineering, and Construction (3375)

RDU: Design, Engineering and Construction (526)

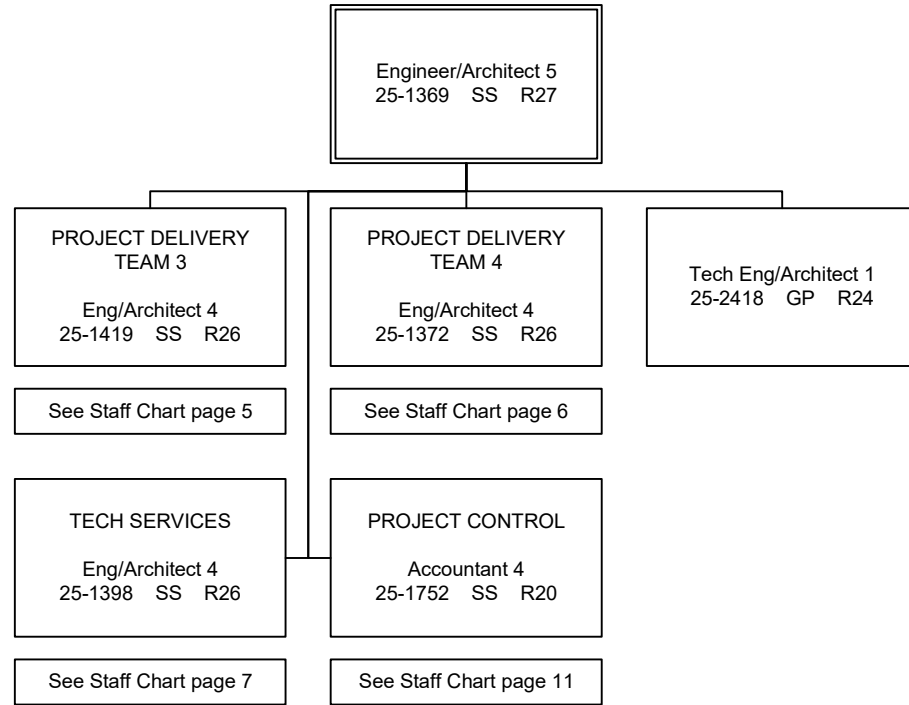
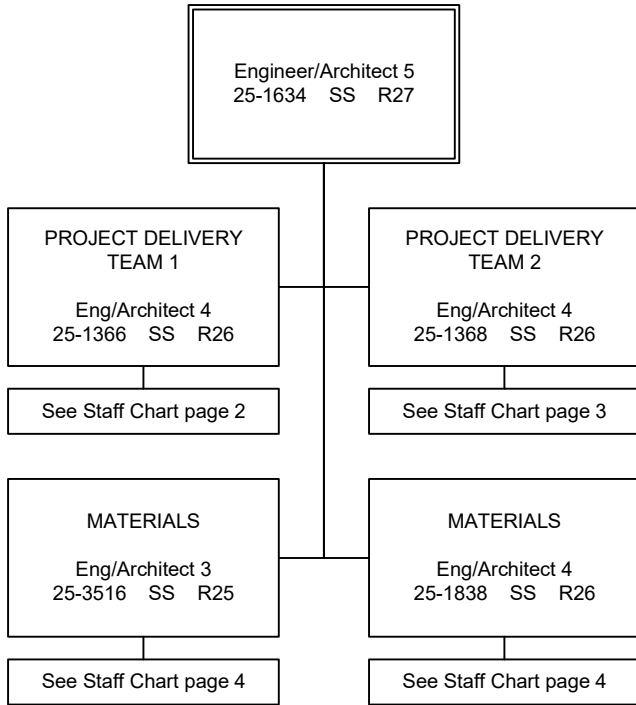
FY2025 Governor's Budget

Position Totals: 201 PFT | 67 PPT | 7 NP

TEAM LEADS

Fairbanks (JBA)

NORTHERN REGION DESIGN, ENG, & CONST	
Positions	Total
Full Time	202
Par Time	67
Non-Perm	7
Total	276



*All positions are located in Fairbanks and are PFT positions unless otherwise noted.

Department of Transportation & Public Facilities

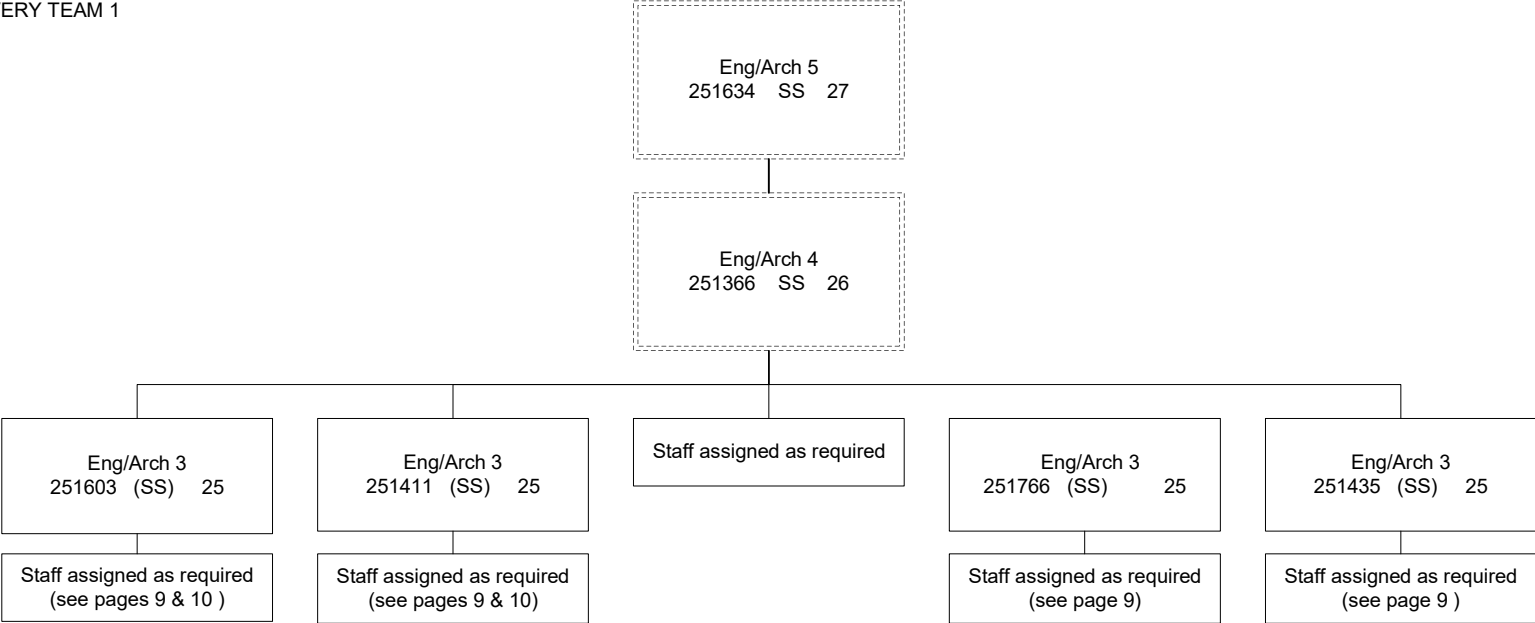
Northern Region Design, Engineering, and Construction (3375)

RDU: Design, Engineering and Construction (526)

FY2025 Governor's Budget

Position Totals: 201 PFT | 67 PPT | 7 NP

PROJECT DELIVERY TEAM 1



*All positions are located in Fairbanks and are PFT positions unless otherwise noted.

Positions not counted here

Department of Transportation & Public Facilities

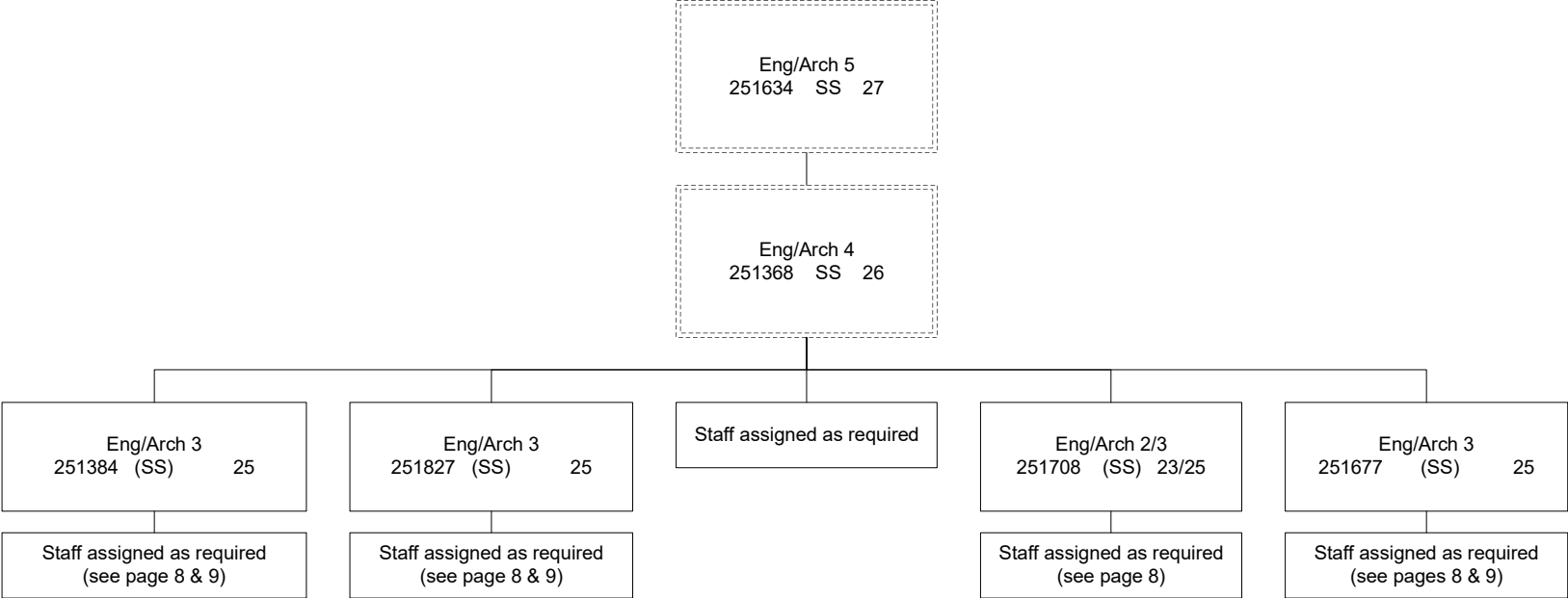
Northern Region Design, Engineering, and Construction (3375)

RDU: Design, Engineering and Construction (526)

FY2025 Governor's Budget

Position Totals: 201 PFT | 67 PPT | 7 NP

PROJECT DELIVERY TEAM 2



*All positions are located in Fairbanks and are PFT positions unless otherwise noted.

Positions not counted here

Department of Transportation & Public Facilities

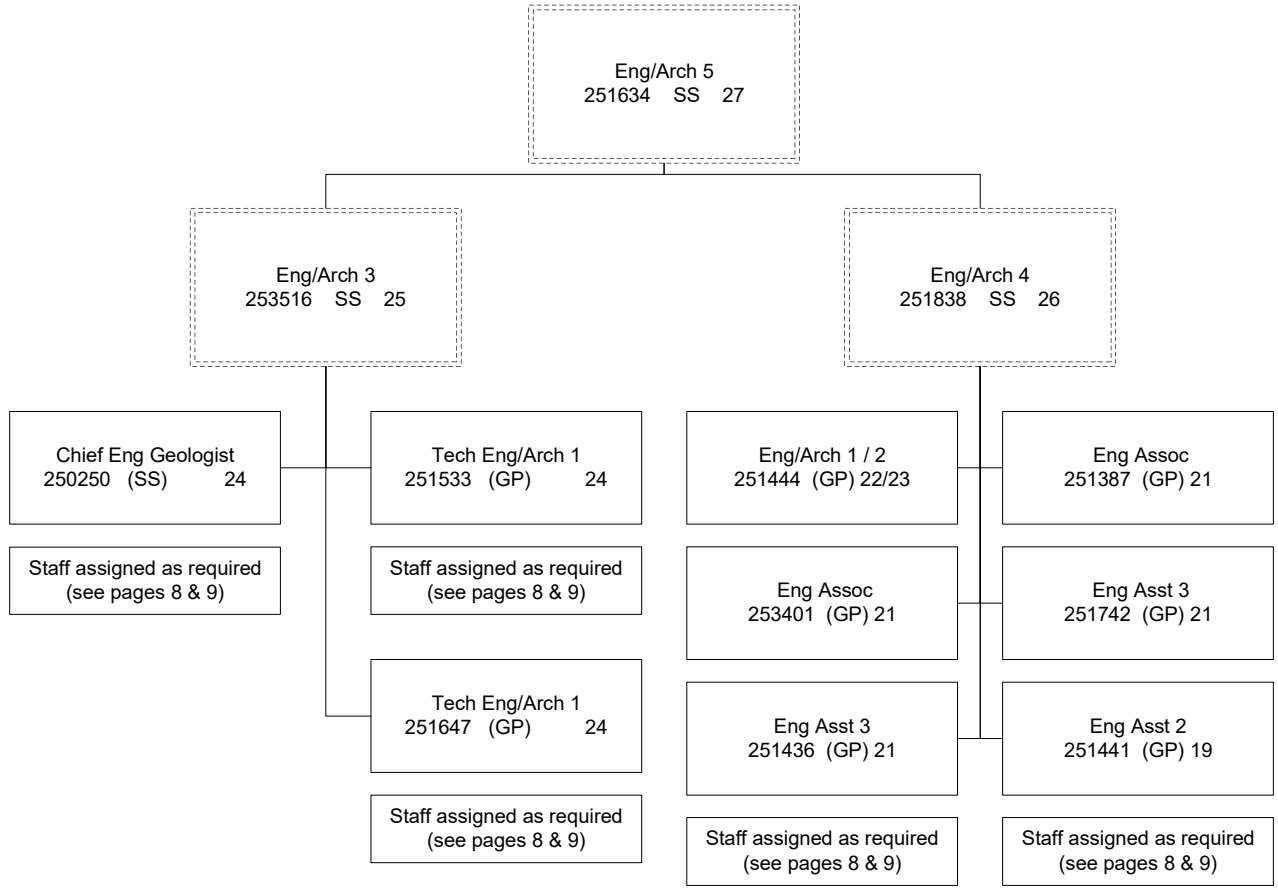
Northern Region Design, Engineering, and Construction (3375)

RDU: Design, Engineering and Construction (526)

FY2025 Governor's Budget

Position Totals: 201 PFT | 67 PPT | 7 NP

MATERIALS



Positions not counted here

*All positions are located in Fairbanks and are PFT positions unless otherwise noted.

Department of Transportation & Public Facilities

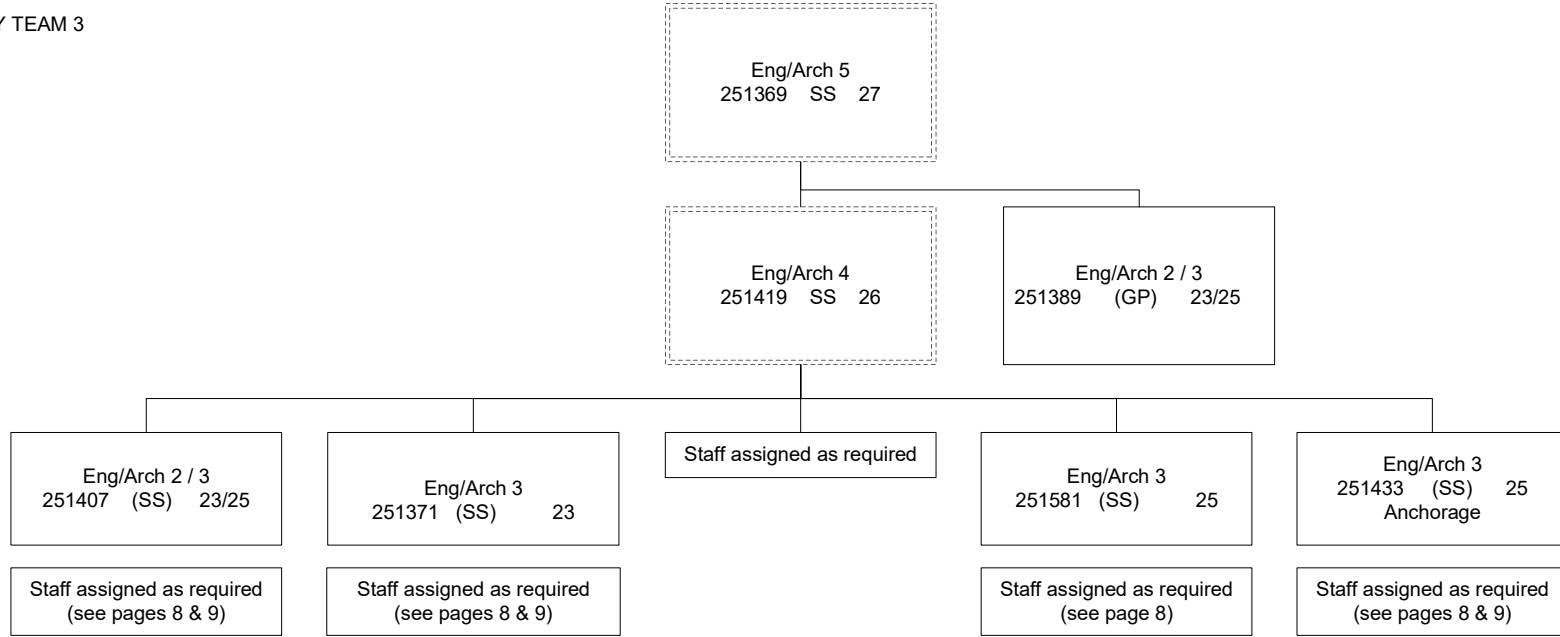
Northern Region Design, Engineering, and Construction (3375)

RDU: Design, Engineering and Construction (526)

FY2025 Governor's Budget

Position Totals: 201 PFT | 67 PPT | 7 NP

PROJECT DELIVERY TEAM 3



*All positions are located in Fairbanks and are PFT positions unless otherwise noted.

Positions not counted here

Department of Transportation & Public Facilities

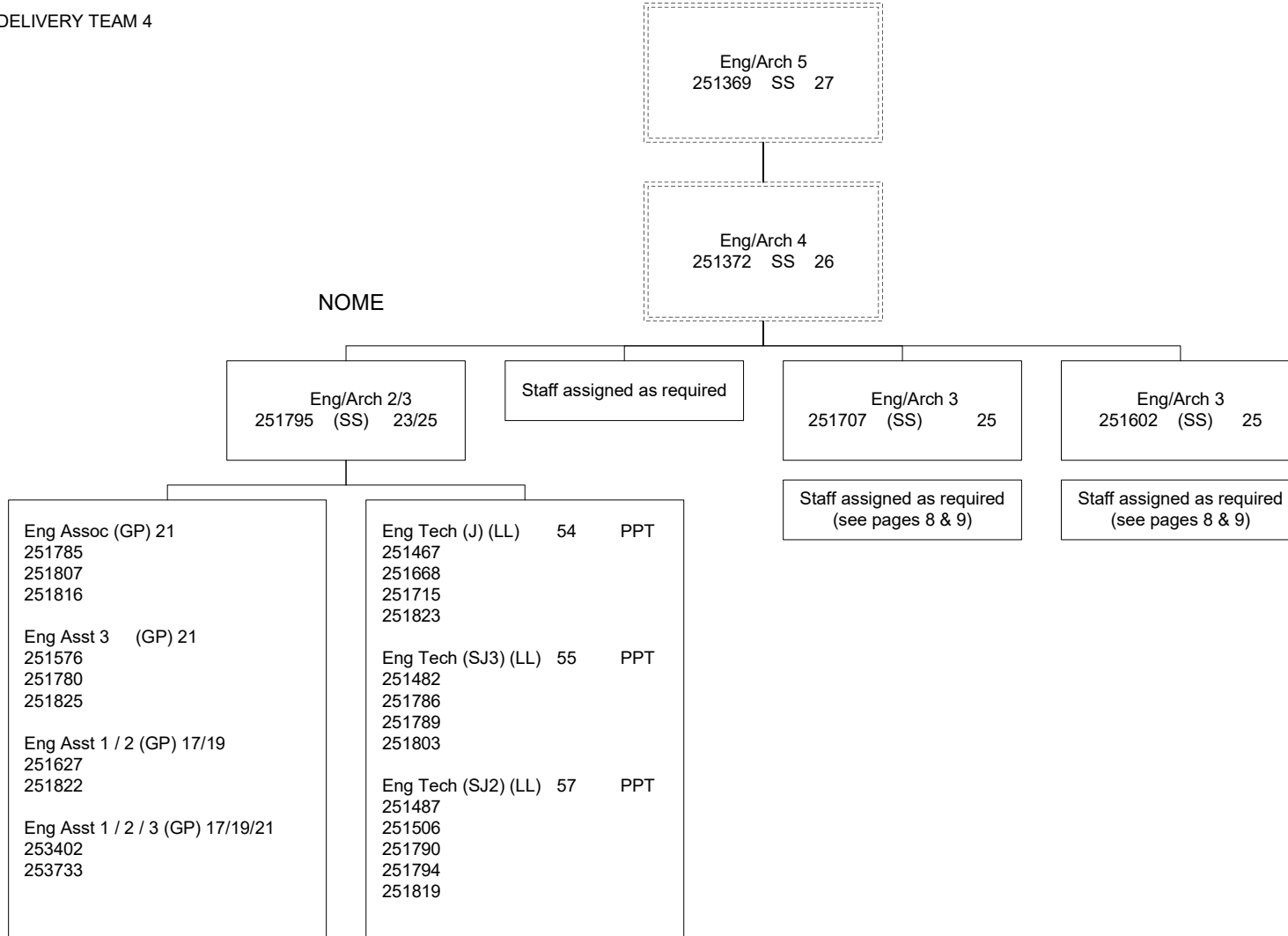
Northern Region Design, Engineering, and Construction (3375)

RDU: Design, Engineering and Construction (526)

FY2025 Governor's Budget

Position Totals: 201 PFT | 67 PPT | 7 NP

PROJECT DELIVERY TEAM 4



*All positions are located in Fairbanks and are PFT positions unless otherwise noted.

Positions not counted here

Department of Transportation & Public Facilities

Northern Region Design, Engineering, and Construction (3375)

RDU: Design, Engineering and Construction (526)

FY2025 Governor's Budget

Position Totals: 201 PFT | 67 PPT | 7 NP

TECH SERVICES TEAM



*All positions are located in Fairbanks and are PFT positions unless otherwise noted.

Department of Transportation & Public Facilities

Northern Region Design, Engineering, and Construction (3375)

RDU: Design, Engineering and Construction (526)

FY2025 Governor's Budget

Position Totals: 201 PFT | 67 PPT | 7 NP

DEC ENGINEERING STAFF ASSIGNED AS REQUIRED (GG/GP)

Eng Asst 1 / 2 (GP) 17/19
251443
251449
251457
251459
251511
251538
251541
251542
251546
251548 – <i>Delta Junction</i>
251555
251557
251579
251580
251582
251622
251625
251637
251659
251660
251661
251688
251701
251704
251761
251777
251802
251812
251843
253405
253521
253525
253526
253527
253528

Eng Asst 3 (GP) 21
250165
251406
251409
251412
251439
251447
251530
251534
251578
251607
251611
251639
251656
251657
251658
251710
251765
251781
251782
251784
251796
253730
253731
253732
253450

Eng Asst 1 / 2 / 3 (GP) 17/19/21
250202
251421
251455
251473
251632 - <i>Anchorage</i>
251683
253449

Eng Associate (GP) 21
251405 - <i>Valdez</i>
251573
251609
251705
251797

Engineering Assistant 3 (GP) 21
251382
251394
251437
251446
251570
251599
Engineer/Architect 1 (GP) 22
251396
251432
251537
253452
253574
253608
Engineering Associate (GP) 21
251540 – <i>Juneau</i>
251551
253453
Engineer/Architect 3 (GP) 25
251731

Eng Arch 1 (GP) 22
251434

Eng Arch 1 / 2 (GP) 22/23
253607

Drafting Tech 3 (GP) 15
251770
251558

Env Impact Analysts 1 / 2 / 3 (GP) 15/17/19
251532
251545
251556
251604
251771
251850
253593

Env Imp Analysts 2 / 3 (GP) 17/19
252410

Env Impact Analysts 3 (GP) 19
251536

Land Surveyor 1 (GP) 21
251740

Land Surveyor 1 / 2 (GP) 21/22
251571
251768

College Intern 1/2/3/4 (EE) 8/9/10/12
25IN1202
25IN1204

ROW Asst / ROW Agent 1/2 (GP) 12/14/16
251425

ROW Agent 1 / 2 (GP) 14/16
251400
253694

ROW Agent 2 (GP) 16
251423

ROW Agent 3 (GP) 18
251388
251391
251399
251416
251460
251544
251572
251729

Eng Geologist 1 / 2 (GP) 16/18
251624
251635

Eng Geologist 2 (GP) 18
250732
251636

*All positions are located in Fairbanks and are PFT positions unless otherwise noted.

Department of Transportation & Public Facilities

Northern Region Design, Engineering, and Construction (3375)

RDU: Design, Engineering and Construction (526)

FY2025 Governor's Budget

Position Totals: 201 PFT | 67 PPT | 7 NP

DEC ENGINEERING STAFF ASSIGNED AS REQUIRED (LTC)

Eng Technician (J) (LL)	54	PPT
251464		
251465		
251468		
251469		
251474		
251479		
251490		
251524		
251643		
251648		
251667		
251748		
251758		
251852		
251862		

Eng Technician SJ2 (LL)	57	PPT
251502		
251507		
251508		
251518		
251519		
251525		
251566		
251569		
251596		
251684		
251689		
251693		
251700		
251745		
251787		
251880		

Survey – Lead (LL)	53	PPT
251612		
251871		
251565		

Survey – J (LL)	54	PPT
251500		

Survey – SJ2 (LL)	56	PPT
251682		
251694		

Driller – Journey (LL)	53	PPT
251645		

Driller – SJ (LL)	54	PPT
250247		

Driller – Journey (LL)	53	PPT
250723		
251775		

Maint Gen (J) (LL)	54	PPT
251494		

Eng Tech (SJ 1/2) (LL)	59/57	NP
25IN1005		
25IN1006		
25IN1007		
25IN1008		
25IN1014		

Eng Technician SJ3 (LL)	55	PPT
251480		
251484		
251485		
251486		
251492		
251615		
251678		
251762		
251776		
251854		
251857		
251875		
251876		

Driller – SJ (LL)	54	PPT
251491		
251644		

*All positions are located in Fairbanks and are PFT positions unless otherwise noted.

Department of Transportation & Public Facilities

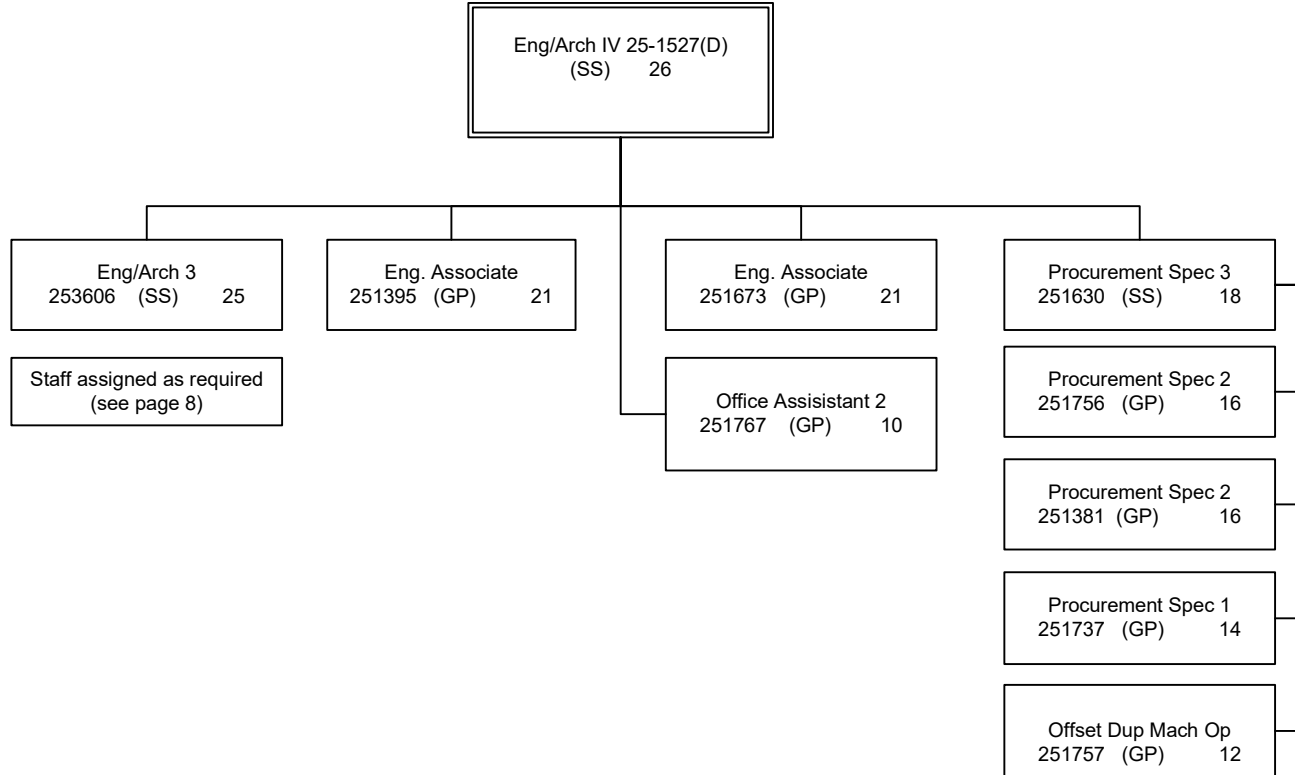
Northern Region Design, Engineering, and Construction (3375)

RDU: Design, Engineering and Construction (526)

FY2025 Governor's Budget

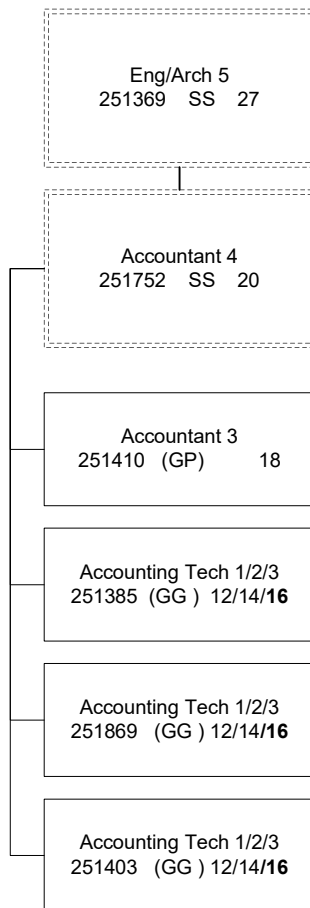
Position Totals: 201 PFT | 67 PPT | 7 NP

CONTRACTS



*All positions are located in Fairbanks and are PFT positions unless otherwise noted.

PROJECT CONTROL



Positions not counted here

*All positions are located in Fairbanks and are PFT positions unless otherwise noted.

DEC ADMINISTRATIVE STAFF

