

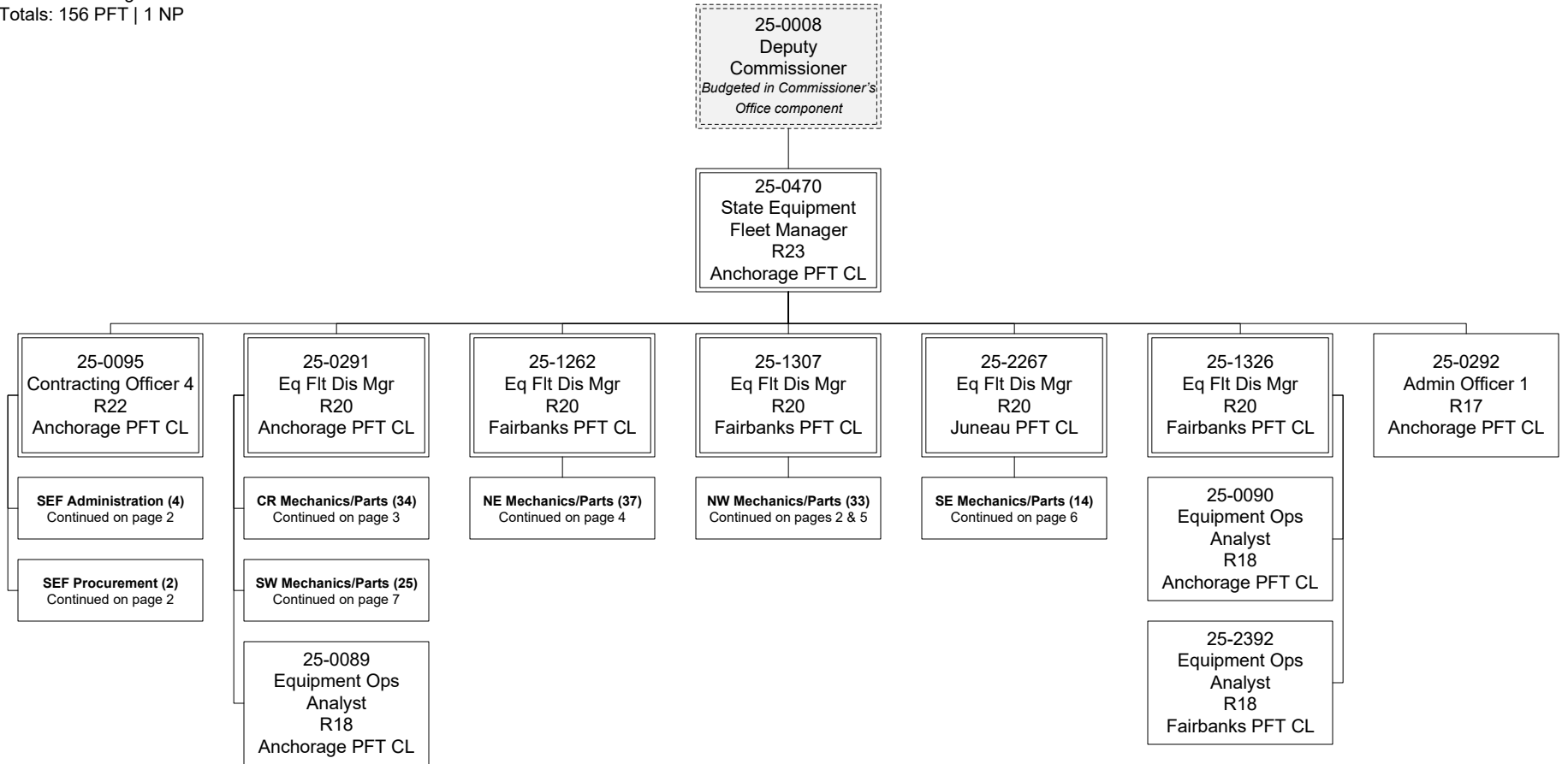
Department of Transportation & Public Facilities

State Equipment Fleet (2791)

RDU: State Equipment Fleet (369)

FY2025 Governor's Budget

Position Totals: 156 PFT | 1 NP



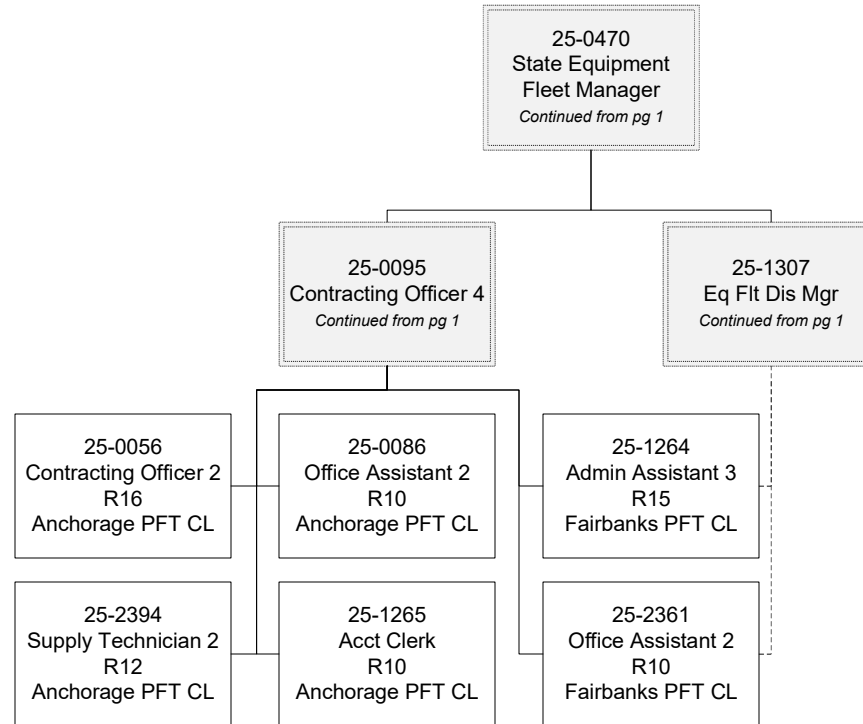
Department of Transportation & Public Facilities

State Equipment Fleet (2791)

RDU: State Equipment Fleet (369)

FY2025 Governor's Budget

Position Totals: 156 PFT | 1 NP



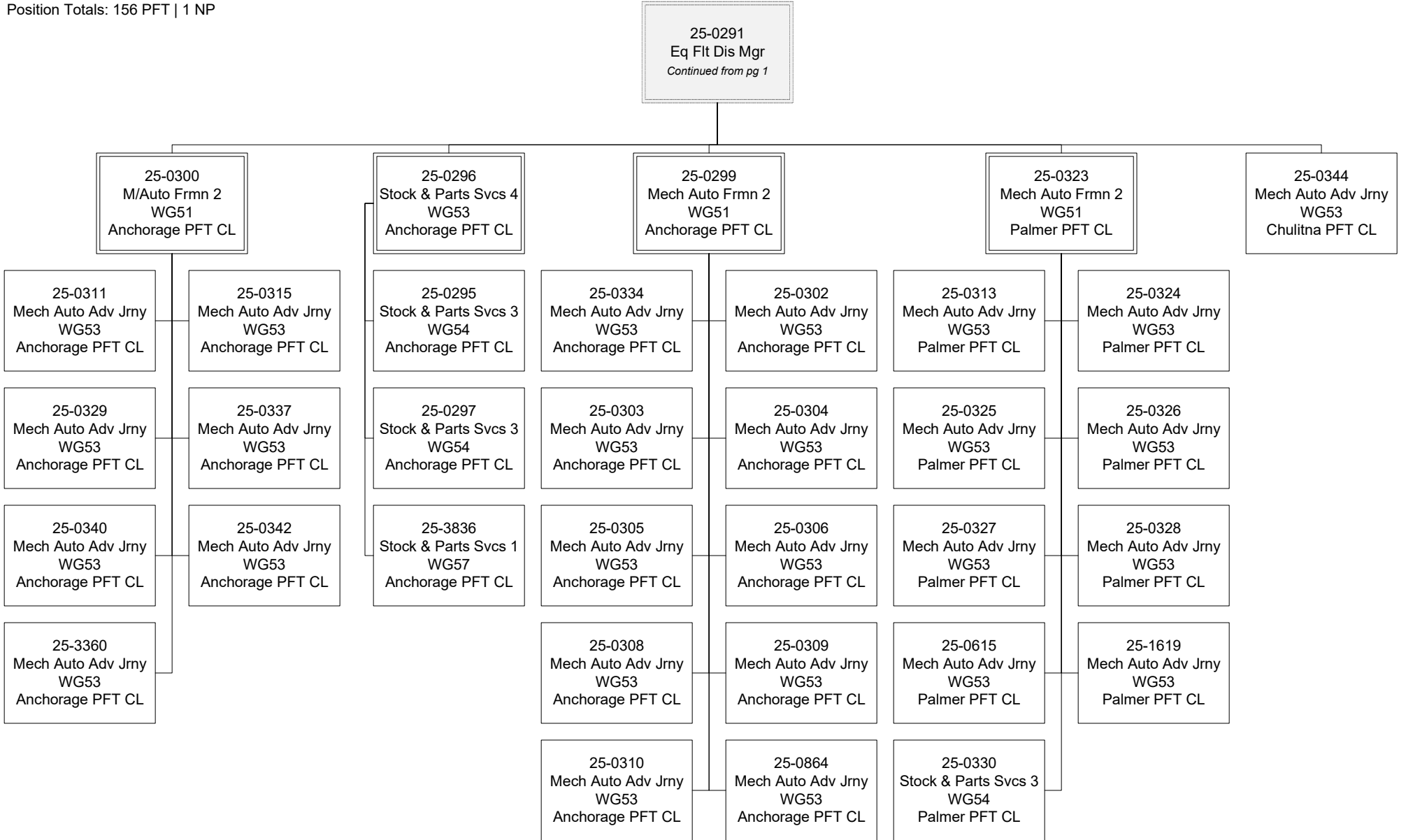
Department of Transportation & Public Facilities

State Equipment Fleet (2791)

RDU: State Equipment Fleet (369)

FY2025 Governor's Budget

Position Totals: 156 PFT | 1 NP



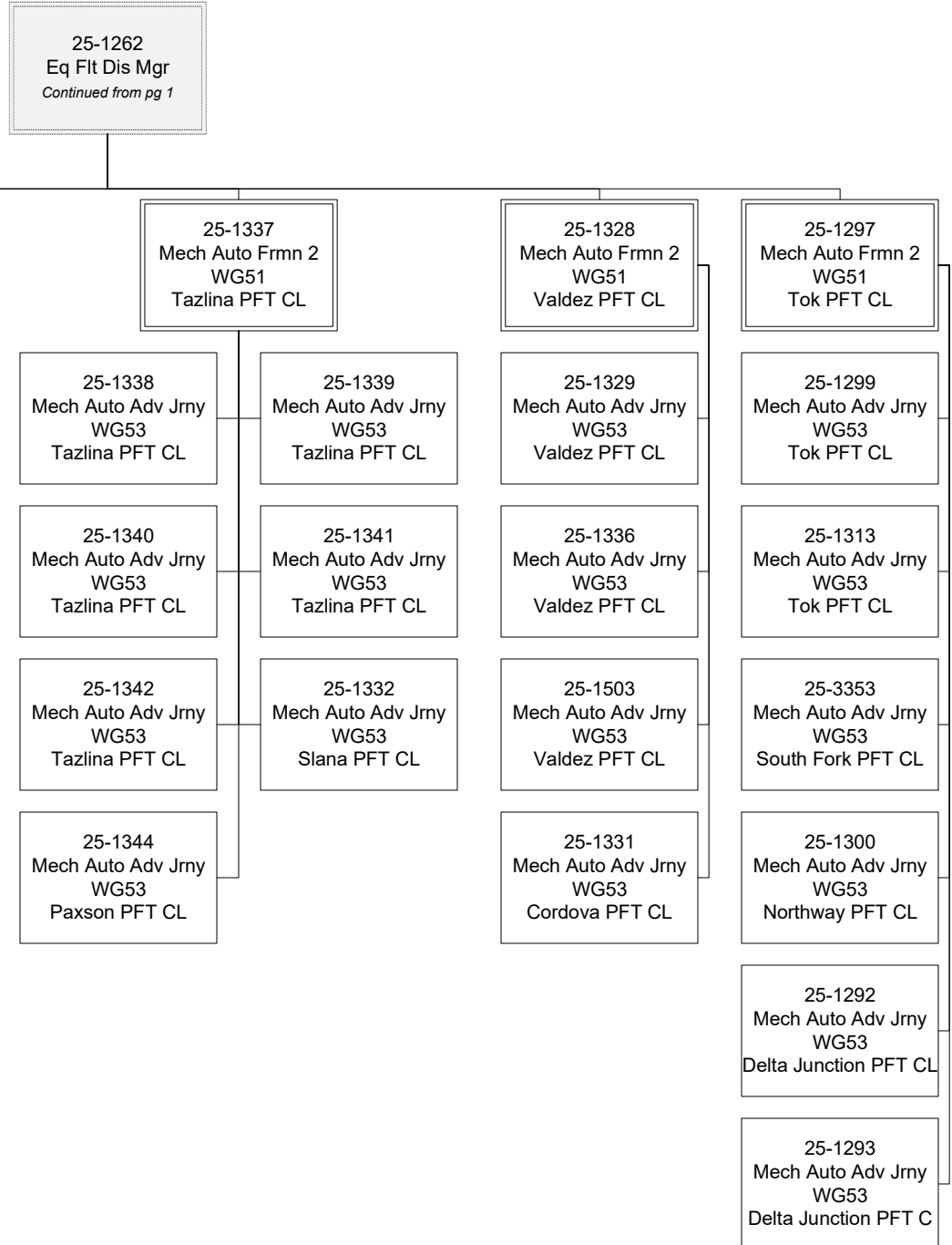
Department of Transportation & Public Facilities

State Equipment Fleet (2791)

RDU: State Equipment Fleet (369)

FY2025 Governor's Budget

Position Totals: 156 PFT | 1 NP



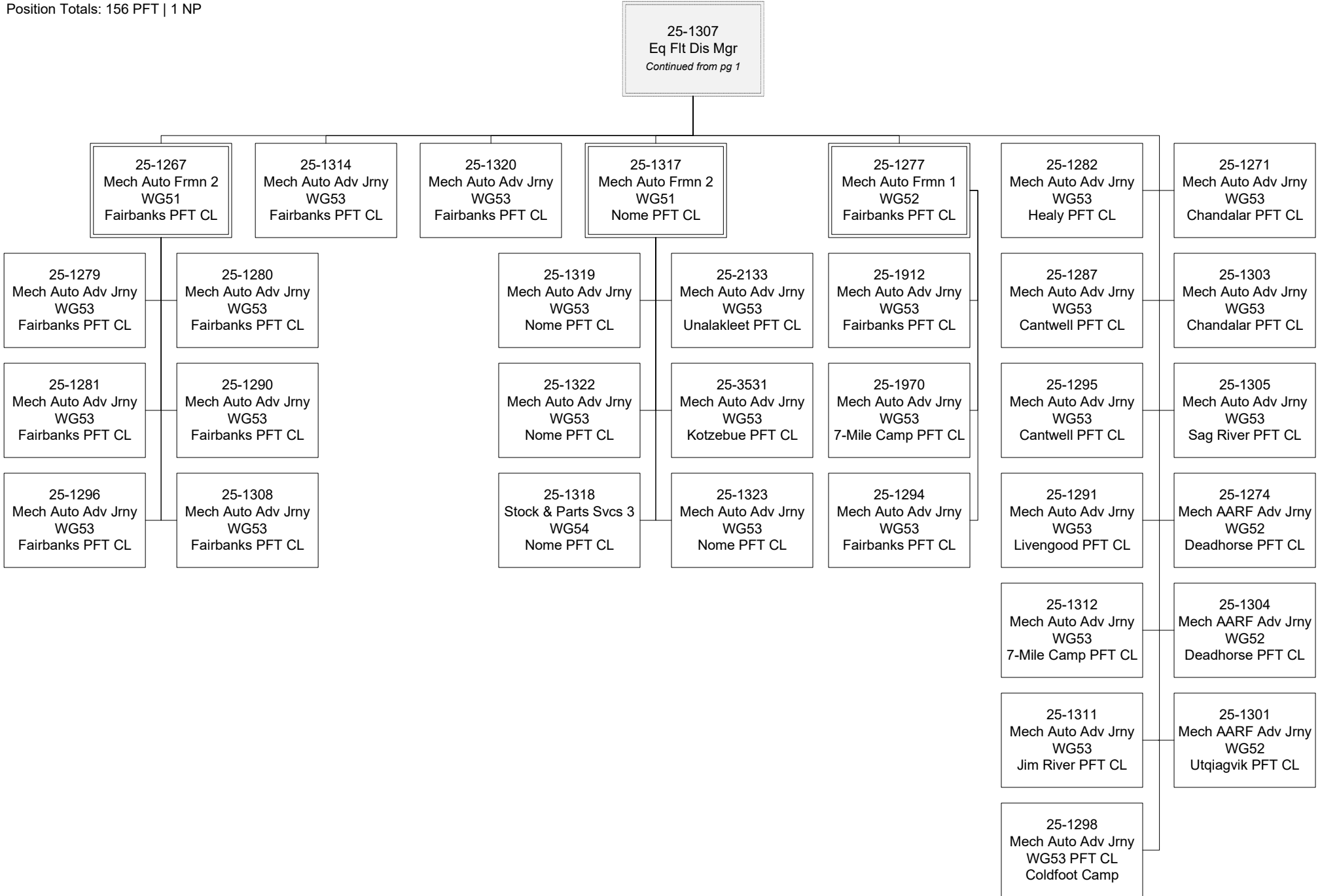
Department of Transportation & Public Facilities

State Equipment Fleet (2791)

RDU: State Equipment Fleet (369)

FY2025 Governor's Budget

Position Totals: 156 PFT | 1 NP



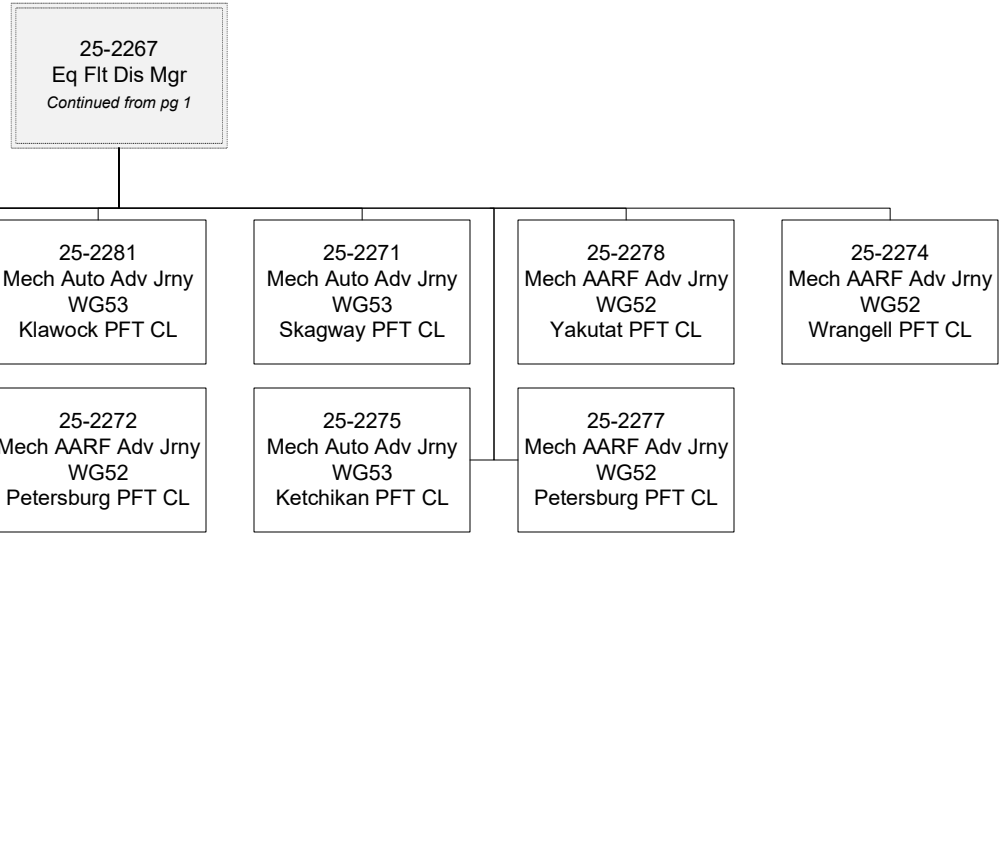
Department of Transportation & Public Facilities

State Equipment Fleet (2791)

RDU: State Equipment Fleet (369)

FY2025 Governor's Budget

Position Totals: 156 PFT | 1 NP



Department of Transportation & Public Facilities

State Equipment Fleet (2791)

RDU: State Equipment Fleet (369)

FY2025 Governor's Budget

Position Totals: 156 PFT | 1 NP

25-0291
Eq Flt Dis Mgr
Continued from pg 1

