

State of Alaska
FY2025 Governor's Operating Budget

Department of Transportation and Public Facilities
Central Region Highways and Aviation
Component Budget Summary

Component: Central Region Highways and Aviation

Contribution to Department's Mission

Efficiently operate, preserve, protect, manage, and control the state's highway, airport, and harbor systems.

Core Services

- Implement roadway federal preservation programs. Programs identify and provide a systematic approach to preservation and preventative maintenance activities on eligible roadways. Activities include pavement crack sealing, drainage ditch and roadway shoulder reconstruction, storm drain cleanout, roadway striping, roadway illumination preservation, application of dust palliative on gravel roads, and bridge preservation.
- Implement State of Alaska Deferred Maintenance (DM) program. This program identifies high priority maintenance locations that will not soon be addressed by a federally funded project. Maintenance and Operations (M&O) endeavors to ultimately reduce maintenance costs through avoidance of more severe or emergency repairs with DM funds. Examples include paving highly deteriorated pavement to avoid excessive pot-hole repairs and drainage structure replacement to avoid washouts or severe erosion.
- Perform routine summer maintenance including, but not limited to, filling potholes, paved and gravel runway maintenance, guardrail and fence repair, concrete repair, sign replacement, mowing and vegetation control, culvert maintenance, erosion control, bike path preservation weight restriction management, gravel road and runway maintenance. M&O operates as an independent function, the federally mandated Municipal Separate Storm Sewer System program (MS4) within the Municipality of Anchorage.
- Perform routine winter maintenance including, but not limited to, snow and ice removal on roads and airport surfaces, sanding, brine application, anti-icing chemical application (runways), and snow hauling. Related activities include stockpiling salt and sand, mixing salt-brine, sidewalk snow removal, and steam thawing culverts.
- Perform year-round electrical maintenance on both highway and airport infrastructure including traffic signals, streetlights, runway lights, school zone flashers, culvert thaw wires, Road Weather Information Systems (RWIS), and conduct utility locates.
- Support snow avalanche program designed to identify, monitor and forecast areas of high avalanche probability that jeopardize transportation infrastructure. Trigger avalanches in a controlled manner under safe conditions, preventing damage to transportation infrastructure while keeping motoring public free from adverse impact. Operations include monitoring and forecasting avalanche activity, operating the Howitzer gun program under US Army requirements, and avalanche debris cleanup.
- Operate and maintain three FAA Part 139 certified airports including Bethel, Dillingham, and Homer. Major programs include TSA and badging, Aircraft Rescue and Fire Fighting program (ARFF), wildlife hazing and perform routine maintenance including assessing winter runway conditions, snow and ice removal, runway markings, navigation aid repair, perimeter fence repairs, and brush clearing.
- Maintain 68 rural airports including two seaplane bases. Specific duties include runway surface maintenance, snow and ice removal, brush clearing, reporting electrical problems, and filing Notice to Airmen form.
- Respond to natural disasters; M&O personnel and equipment are often the first responders to emergencies that impact State transportation infrastructure or assist with management of State transportation infrastructure to aid in efficient disaster response by other first responders (law enforcement, hospital / ambulance, fire fighters).

Major Component Accomplishments in 2023

- Operated, maintained, and repaired approximately 4,755 lane miles of roadways and 550 lane miles of aviation-operation surfaces at 71 airports.
- Applied 1,083,437 linear feet of crack seal material to preserve asphalt on state highways.
- Performed brush cutting along 2,256 lane miles of roadways.
- Striped 4,050 lane miles of roadways.
- Installed or repaired 114,538 linear feet of guardrail.
- Replaced or repaired 19 failing culverts.
- Central Region M&O Bridge crew performed maintenance on nine bridges in Central Region and 1 bridge in Southcoast Region.
- Soldotna station responded to oversee the emergency replacement of a failed culvert on Funny River Road.

- Anchorage District responded to three large snow events within a 10-day window during December 2022.
- Cleared a blocked culvert at Glenn Highway Mile Point 93 which prevented landslide material from overtopping and closing the highway.
- McGrath Airport Foreman and airport equipment successfully relocated to the new Snow Removal Equipment Building.
- Hired a Statewide Avalanche and Artillery Program Manager to oversee DOT&PF's collaboration with the U.S. Army for avalanche weapons, transition away from this program, and the introduction of alternative avalanche mitigation strategies.
- Sinkhole and collapsed storm drain repairs in Anchorage.
- Ensured the retention of operating certificates at all three FAA Part 139 certified airports: Dillingham, Bethel, and Homer.
- Re-established winter operations out of Birchwood for better coverage of the Glenn Highway between Anchorage and the Mat-Su.
- Continued to re-establish surface course and drainage on Skilak Lake Road, Cooper Landing.

Key Component Challenges

- Melting of permafrost is resulting in runway subsidence and undulations, creating aviation safety issues that grading cannot resolve.
- Inflation continues to drive up costs for contracted services, commodities, and utilities, including rural airport maintenance contracts, snow haul contracts, anti-icing materials, sand, salt, guardrail, rental equipment, road and airport paint, culverts, signs, light poles, fuel, equipment parts, and electricity.
- Meeting public expectations for roadway and nonmotorized facility maintenance and snow clearing, despite the challenges of a reduced and inexperienced workforce.
- Maintaining airports to meet FAA, TSA, and public expectations following the FAA's determination that the previously eligible costs such as rural airport maintenance contracts, new equipment and replacement parts, equipment charges, and other maintenance activities are now ineligible under the Coronavirus Response and Relief Supplemental Act and American Rescue Plan programs.
- Ongoing recruitment and retention of qualified employees in skilled positions.
- M&O continues to use an antiquated Maintenance Management System (MMS) for the tracking of labor, equipment and materials. Running reports from MMS proves to be cumbersome and time intensive and does not always align with the Integrated Resource Information System. Reporting features are also outdated and lacked the required granularity. Additional allocation of staff time and resources is also required to input program data into the system.
- The future of avalanche control is uncertain. The primary method, the Howitzer program, is being phased out by the U.S. Army, with no replacement in sight. Despite an extensive search worldwide, the department has not found a system that matches its performance and cost effectiveness.

Significant Changes in Results to be Delivered in FY2025

- The department continues to consider the implementation of a new maintenance management system offered by AgileAssets. This system will offer seamless integration, providing comprehensive maintenance information. It will enhance the region's ability to monitor expenses and optimize resource allocation for more efficient maintenance operations.
- M&O, in collaboration with the new Statewide Avalanche and Artillery Program Manager, will continue researching and assessing avalanche mitigation practices independent of the U.S. Army Howitzer cannon and artillery support. This will involve coordinating with various jurisdictions, federal, and state entities to ensure the safety, efficiency, and effectiveness of alternative mitigation methods.
- M&O is continually evaluating optimal locations for asphalt recyclers in areas with deteriorated road conditions and no available project or deferred maintenance funding. These areas require the substantial asphalt patching materials supplied by the recycler.

Statutory and Regulatory Authority

AS 02 Aeronautics
AS 19 Highways and Ferries
AS 30 Harbors and Shipping

AS 38 Motor Vehicles
AS 44 State Government
AAC 13 Public Safety
AAC 14 Public Works
AAC 17 DOT&PF
CFR 14 Aeronautics
CFR 23 Highways
CFR 49 Airport Security

Contact Information
<p>Contact: Kirk Warren, Chief, Central Region Maintenance & Operations Phone: (907) 269-0756 E-mail: kirk.warren@alaska.gov</p>

Central Region Highways and Aviation Personal Services Information				
Authorized Positions			Personal Services Costs	
	<u>FY2024</u> <u>Management</u> <u>Plan</u>	<u>FY2025</u> <u>Governor</u>		
Full-time	168	167	Annual Salaries	12,140,740
Part-time	4	4	COLA	90,657
Nonpermanent	14	14	Premium Pay	1,495,400
			Annual Benefits	8,993,507
			<i>Less 6.25% Vacancy Factor</i>	<i>(1,421,104)</i>
			Lump Sum Premium Pay	0
Totals	186	185	Total Personal Services	21,299,200

Position Classification Summary					
Job Class Title	Anchorage	Fairbanks	Juneau	Others	Total
Accounting Technician 2	1	0	0	0	1
Administrative Assistant 1	2	0	0	3	5
Administrative Assistant 3	2	0	0	2	4
Administrative Officer 1	1	0	0	0	1
Administrative Officer 2	1	0	0	0	1
Airport Operations Specialist	0	0	0	1	1
E/Op Jrny 3	5	0	0	29	34
E/Op Subjrnly 1	4	0	0	10	14
Engineer/Architect 1	1	0	0	0	1
Engineer/Architect 4	1	0	0	0	1
Environmental Impact Analyst 3	1	0	0	0	1
Equipment Operator Foreman 1	0	0	0	4	4
Equipment Operator Foreman 2	1	0	0	1	2
Equipment Operator, Journey 1	13	0	0	1	14
Equipment Operator, Journey 2	24	0	0	57	81
Maint & OPS Mgr	1	0	0	0	1
Maint & OPS Sp	2	0	0	0	2
Maint & OPS Spr	2	0	0	2	4
Mts/Bfc Frmn	0	0	0	1	1
Mts/EI Jrny 2	3	0	0	4	7
Office Assistant 2	0	0	0	2	2
Rural Airport Foreman	0	0	0	2	2
S&E Spt Spec	1	0	0	0	1
Totals	66	0	0	119	185

Component Detail All Funds
Department of Transportation and Public Facilities

Component: Central Region Highways and Aviation (564)
RDU: Highways, Aviation and Facilities (408)

Non-Formula Component

	FY2023 Actuals	FY2024 Enrolled	FY2024 Authorized	FY2024 Management Plan	FY2025 Governor Adjusted Base	FY2025 Governor	FY2024 Management Plan vs FY2025 Governor		
1000 Personal Services	20,898.9	21,339.4	21,339.4	21,136.2	21,299.2	21,299.2	163.0	0.8%	
2000 Travel	243.5	212.3	212.3	415.5	415.5	415.5	0.0	0.0%	
3000 Services	17,270.8	13,437.1	13,437.1	13,437.1	13,432.7	13,483.2	46.1	0.3%	
4000 Commodities	8,726.2	10,310.1	10,310.1	10,310.1	9,778.6	11,500.0	1,189.9	11.5%	
5000 Capital Outlay	913.5	5.0	5.0	5.0	5.0	5.0	0.0	0.0%	
7000 Grants, Benefits	0.0	0.0	0.0	0.0	0.0	0.0	0.0	0.0%	
8000 Miscellaneous	0.0	0.0	0.0	0.0	0.0	0.0	0.0	0.0%	
Totals	48,052.9	45,303.9	45,303.9	45,303.9	44,931.0	46,702.9	1,399.0	3.1%	
Fund Sources:									
1004 Gen Fund (UGF)	18,063.5	18,555.7	18,555.7	18,555.7	21,187.2	22,959.1	4,403.4	23.7%	
1005 GF/Prgm (DGF)	285.5	386.1	386.1	386.1	386.9	386.9	0.8	0.2%	
1007 I/A Rcpts (Other)	174.4	251.9	251.9	251.9	254.5	254.5	2.6	1.0%	
1061 CIP Rcpts (Other)	7,837.2	5,066.9	5,066.9	5,066.9	5,002.3	5,002.3	-64.6	-1.3%	
1108 Stat Desig (Other)	2.2	149.2	149.2	149.2	149.2	149.2	0.0	0.0%	
1200 VehRntlTax (DGF)	5,004.7	5,004.7	5,004.7	5,004.7	5,004.7	5,004.7	0.0	0.0%	
1214 WhitTunnel (Other)	58.2	60.8	60.8	60.8	61.9	61.9	1.1	1.8%	
1239 AvFuel Tax (Other)	1,551.8	1,583.0	1,583.0	1,583.0	1,601.9	1,601.9	18.9	1.2%	
1244 Rural Air (Other)	935.7	897.0	897.0	897.0	912.1	912.1	15.1	1.7%	
1249 Motor Fuel (DGF)	10,370.2	10,370.3	10,370.3	10,370.3	10,370.3	10,370.3	0.0	0.0%	
1265 COVID Fed (Fed)	3,769.5	2,978.3	2,978.3	2,978.3	0.0	0.0	-2,978.3	-100.0%	
Unrestricted General (UGF)	18,063.5	18,555.7	18,555.7	18,555.7	21,187.2	22,959.1	4,403.4	23.7%	
Designated General (DGF)	15,660.4	15,761.1	15,761.1	15,761.1	15,761.9	15,761.9	0.8	0.0%	
Other Funds	10,559.5	8,008.8	8,008.8	8,008.8	7,981.9	7,981.9	-26.9	-0.3%	
Federal Funds	3,769.5	2,978.3	2,978.3	2,978.3	0.0	0.0	-2,978.3	-100.0%	
Positions:									
Permanent Full Time	167	167	167	168	167	167	-1	-0.6%	
Permanent Part Time	4	4	4	4	4	4	0	0.0%	
Non Permanent	14	14	14	14	14	14	0	0.0%	

Change Record Detail - Multiple Scenarios with Descriptions
Department of Transportation and Public Facilities

Component: Central Region Highways and Aviation (564)
RDU: Highways, Aviation and Facilities (408)

Scenario/Change Record Title	Trans Type	Totals	Personal Services	Travel	Services	Commodities	Capital Outlay	Grants, Benefits	Miscellaneous	Positions		NP
										PFT	PPT	
***** Changes From FY2024 Enrolled To FY2024 Authorized *****												
FY2024 Enrolled	Enrolled	45,303.9	21,339.4	212.3	13,437.1	10,310.1	5.0	0.0	0.0	167	4	14
1004 Gen Fund		18,555.7										
1005 GF/Prgm		386.1										
1007 I/A Rcpts		251.9										
1061 CIP Rcpts		5,066.9										
1108 Stat Desig		149.2										
1200 VehRntlTax		5,004.7										
1214 WhitTunnel		60.8										
1239 AvFuel Tax		1,583.0										
1244 Rural Air		897.0										
1249 Motor Fuel		10,370.3										
1265 COVID Fed		2,978.3										
Subtotal		45,303.9	21,339.4	212.3	13,437.1	10,310.1	5.0	0.0	0.0	167	4	14
***** Changes From FY2024 Authorized To FY2024 Management Plan *****												
Transfer Mechanic Automotive Advanced Journey/Lead (25-0780) from State Equipment Fleet for Airport Support	Trin	0.0	0.0	0.0	0.0	0.0	0.0	0.0	0.0	1	0	0
Transfer full-time Mechanic Automotive Advanced Journey/Lead (25-0780), wage grade 53, located in McGrath, from State Equipment Fleet (SEF) and reclass to full-time Equipment Operator Journey 1/2, wage grade 54/53, located in McGrath.												
Currently, the McGrath airport has only one CR H&A position working at the airport, making it impossible to assume and safely meet the demands of a seven-days-a-week, 365-days-a-year operation and keep it in regulatory compliance. This transfer from State Equipment Fleet will fill this crucial gap to ensure uninterrupted service and operational coverage.												
Align Authority with Anticipated Expenditures	LIT	0.0	-203.2	203.2	0.0	0.0	0.0	0.0	0.0	0	0	0
Transfer authority from personal services to travel to align authority with anticipated obligations. The remaining authority is sufficient to cover anticipated expenditures.												
Subtotal		45,303.9	21,136.2	415.5	13,437.1	10,310.1	5.0	0.0	0.0	168	4	14
***** Changes From FY2024 Management Plan To FY2025 Governor Adjusted Base *****												
Reverse FY2024 One-Time Fund Source Swap to Utilize Federal Relief Funding and Displace UGF	OTI	0.0	0.0	0.0	0.0	0.0	0.0	0.0	0.0	0	0	0
1004 Gen Fund		2,978.3										
1265 COVID Fed		-2,978.3										

Change Record Detail - Multiple Scenarios with Descriptions
Department of Transportation and Public Facilities

Component: Central Region Highways and Aviation (564)
RDU: Highways, Aviation and Facilities (408)

Scenario/Change Record Title	Trans Type	Totals	Personal Services	Travel	Services	Commodities	Capital Outlay	Grants, Benefits	Miscellaneous	Positions		NP
										PFT	PPT	
Reverse the one-time fund source swap of general fund (UGF) to federal relief funding (American Rescue Plan & Coronavirus Response and Relief Supplemental Appropriation Act) to be used for purposes directly related to airports. Such purposes can include the reimbursement of an airport's operational expenses.												
Reverse FY2024 Commodities Increases												
1004 Gen Fund	OTI	-531.1	0.0	0.0	0.0	-531.1	0.0	0.0	0.0	0	0	0
Reverse FY2024 one-time funding for commodities increases.												
Since the pandemic, highway construction costs have increased 16.8 percent. The components of this index align closely with elements of highway maintenance & operations.												
33% - Sodium Acetate-Formate (per ton): Bethel FY20 \$2,049.89 FY21 \$2,249.83 FY22 \$2,744.77												
28% - Sodium Formate (per ton): AIA FY20 \$1,782.45 FY21 \$1,957.00 FY22 \$2,295.00												
86% - Highway Sand (per ton): Statewide FY20 \$24.78 FY21 \$37.90 FY22 \$46.26												
54% - Water Based Traffic Marking Paint (per gallon): Statewide FY20 \$20.01 FY21 \$21.50 FY22 \$31.01												
42% - Blades (regular curved per edge): Statewide FY20 \$107.55 FY21 \$106.53 FY22 \$153.57												
FY2025 Salary, Health Insurance, and PERS Rate Adjustments												
1004 Gen Fund	SalAdj	184.3	316.0	0.0	0.0	0.0	0.0	0.0	0.0	0	0	0
1005 GF/Prgm		0.8										
1007 I/A Rcpts		2.6										
1061 CIP Rcpts		93.2										
1214 WhitTunnel		1.1										
1239 AvFuel Tax		18.9										
1244 Rural Air		15.1										
FY2025 Salary, Health Insurance, and PERS Rate Adjustments: \$316.0												
FY2025 AlaskaCare insurance from \$1,793 to \$1,908 per member per month: \$10.4												
FY2025 GGU health insurance from \$1,573.50 to \$1,579.50 per member per month: \$1.3												
FY2025 GGU 5% Cost of Living Adjustment: \$90.4												
FY2025 PERS Rate Adjustment from 25.10% to 26.76%: \$213.9												
Transfer Transportation Planner 1 (25-1099) to Data Modernization and Innovation Office for Program Alignment												
1061 CIP Rcpts	Trout	-157.8	-153.0	0.0	-4.4	-0.4	0.0	0.0	0.0	-1	0	0

Transfer a full-time Transportation Planner 1 (25-1099), range 21, located in Anchorage, to the Data Modernization and Innovation Office for program alignment.

Change Record Detail - Multiple Scenarios with Descriptions
Department of Transportation and Public Facilities

Component: Central Region Highways and Aviation (564)
RDU: Highways, Aviation and Facilities (408)

Scenario/Change Record Title	Trans Type	Totals	Personal Services	Travel	Services	Commodities	Capital Outlay	Grants, Benefits	Miscellaneous	Positions		NP
										PFT	PPT	
The Data Modernization and Innovation Office is focused on innovation, information systems, and big data. Initial focus areas include Geospatial Information Systems (GIS), Intelligent Transportation Systems (ITS), and AASHTOWare. The office supports innovative technologies and enables the department to capture and compile information and make data-driven decisions.												
	Subtotal	44,931.0	21,299.2	415.5	13,432.7	9,778.6	5.0	0.0	0.0	167	4	14
***** Changes From FY2025 Governor Adjusted Base To FY2025 Governor *****												
Airport Lighting Repairs												
	Inc	50.5	0.0	0.0	50.5	0.0	0.0	0.0	0.0	0	0	0
1004 Gen Fund		50.5										
Many rural airports are the only form of transportation into and out of communities. These airports are the lifeline for daily services and emergency response. During conditions of poor weather or darkness, the airport lighting systems are vital to the operations of the airport. Non-operational lighting systems impact or delay flight services.												
Additional funding will be utilized for a routine inspection program and to provide immediate response to any identified issues by facilitating timely airport lighting repairs, the availability of spare equipment on-site, and replacements for worn navigational aids. A programmatic process is intended to ensure these problems are found prior to failure and replaced, so system operations are not interrupted. Increased authority will also help fund rural airport maintenance contracts.												
Rising Commodities Costs for Maintenance and Operations Activities												
	Inc	1,721.4	0.0	0.0	0.0	1,721.4	0.0	0.0	0.0	0	0	0
1004 Gen Fund		1,721.4										
Due to rising commodity costs, additional funding is needed to meet current operations and critical year-round maintenance and operations activities. Highway construction costs index has increased 42.3 percent over the past two years. The components of this index align closely with elements of highway maintenance and operations. Any additional funding will positively impact the traveling public. Over the past few years service levels have been reduced due to rising costs.												
	Totals	46,702.9	21,299.2	415.5	13,483.2	11,500.0	5.0	0.0	0.0	167	4	14

Line Item Detail (1676)
Department of Transportation and Public Facilities
Travel

Component: Central Region Highways and Aviation (564)

Line Number	Line Name		FY2023 Actuals	FY2024 Management Plan	FY2025 Governor
2000	Travel		243.5	415.5	415.5
Object Class	Servicing Agency	Explanation	FY2023 Actuals	FY2024 Management Plan	FY2025 Governor
2000 Travel Detail Totals			243.5	415.5	415.5
2000	In-State Employee Travel	In-state travel to perform maintenance activities including roadway striping, bridge repair, and major repairs at locations off the contiguous highway system. Travel for personnel to support rural airports runway lighting repairs, airfield maintenance equipment repairs, and necessary inspections for the airports as well as contractor performance. Travel for training sessions for airport safety and security, airport rescue and firefighting (ARFF), and avalanche control. Travel for management to attend administrative meetings.	238.1	415.5	415.5
2002	Out of State Employee Travel	Trips to attend snow conferences and avalanche schooling and conferences for the Northwest area. Selected personnel may attend electrical seminars and bridge seminars.	5.5	0.0	0.0
2006	Other Travel Costs	Other travel expenditures.	-0.1	0.0	0.0

Line Item Detail (1676)
Department of Transportation and Public Facilities
Services

Component: Central Region Highways and Aviation (564)

Line Number	Line Name		FY2023 Actuals	FY2024 Management Plan	FY2025 Governor
3000	Services		17,270.8	13,437.1	13,483.2
Object Class	Servicing Agency	Explanation	FY2023 Actuals	FY2024 Management Plan	FY2025 Governor
3000 Services Detail Totals			17,270.8	13,437.1	13,483.2
3000	Education Services	Conference registration, tuition, fees (excluding Information Technology related - see 3003).	53.8	25.0	0.0
3001	Financial Services	Insurance costs for rural airport contractor's liability insurance.	50.0	50.0	50.0
3002	Legal and Judicial Services	Settlement legal fees.	0.3	1.0	0.0
3003	Information Technology	Information Technology (IT) training, IT consulting, and IT equipment leases, software licensing and software maintenance.	12.3	10.0	12.0
3004	Telecommunications	Long distance, local phone service, and cellular service provided by vendors.	123.1	150.0	125.0
3004	Telecommunications	Transfer of Responsibility Agreement with the Municipality of Anchorage for traffic signal management.	0.0	129.8	220.7
3005	Health Services	Drug and alcohol testing for Commercial Driver License (CDL) employees.	-4.7	15.0	0.0
3006	Delivery Services	Postage, courier or freight charges.	147.8	100.0	95.6
3007	Advertising and Promotions	Advertising for maintenance contracts and public notices for load restrictions and road closures.	1.8	2.5	0.0
3008	Utilities	Electricity for street lights, highway lighting, airfield lighting, signal systems, thaw cable heating of airport maintenance equipment to	1,704.9	450.0	450.0

Line Item Detail (1676)
Department of Transportation and Public Facilities
Services

Component: Central Region Highways and Aviation (564)

Object Class	Servicing Agency	Explanation	FY2023 Actuals	FY2024 Management Plan	FY2025 Governor	
3000 Services Detail Totals			17,270.8	13,437.1	13,483.2	
		allow starting during extreme cold. Electricity for some airport buildings tied into airport lighting meters. Water and sewage, disposal and heating oil.				
3009	Structure/Infrastructure/Land	Rural airport contracts and numerous inspections including: electrical, runway sand, vacuum trucks, and other miscellaneous inspections.	2,204.5	1,250.0	1,175.5	
3010	Equipment/Machinery	Rental or lease of backhoes, bridge repair equipment, survey and gravel screening equipment, specialized tools and machinery equipment. Repairs and maintenance of equipment such as generators, welders, drill presses, pumps, chain saws, chain hoists, and vehicles not maintained by State Equipment Fleet.	265.9	0.0	0.0	
3011	Other Services	Enforcement of Clean Water Act - Environmental Protection Agency (EPA) MS4 requirements mandated National Pollutant Discharge Elimination System (NPDES) street sweeping, drain cleaning, and permit fees to the Municipality of Anchorage. Laundry services per union contract, copying/printing and other miscellaneous services.	2,724.1	0.0	0.0	
3015	Inter-Agency Conservation/Environmental	EnvCon - Department-wide	Stormwater permits.	2.9	6.0	0.0
3015	Inter-Agency Conservation/Environmental	Trans - Central Design & Eng Svcs (2298)	Central Region Preliminary Design and Engineering Support to Central Region Highways and Aviation	0.7	44.0	20.0

Line Item Detail (1676)
Department of Transportation and Public Facilities
Services

Component: Central Region Highways and Aviation (564)

Object Class		Servicing Agency	Explanation	FY2023 Actuals	FY2024 Management Plan	FY2025 Governor
3000 Services Detail Totals				17,270.8	13,437.1	13,483.2
			component.			
3017	Inter-Agency Information Technology Non-Telecommunications	Admin - Department-wide	Office of Information Technology (OIT) Core Services	310.0	350.0	310.0
3018	Inter-Agency Information Technology Telecommunications	Admin - Department-wide	Telecommunications services provided by the Department of Administration such as basic telephone services, equipment and features, dedicated voice/data line service, statewide paging, two-way radio, and video conferencing.	31.4	35.0	31.5
3021	Inter-Agency Mail	Admin - Department-wide	Centralized mail services chargeback	0.7	0.8	0.8
3022	Inter-Agency Human Resources	Admin - Department-wide	Centralized human resource chargeback	166.3	174.6	175.0
3024	Inter-Agency Legal	Law - Department-wide	Legal services provided by the Department of Law.	1.2	0.0	0.0
3026	Inter-Agency Insurance	Admin - Department-wide	Liability insurance at our rural airports.	29.3	30.8	30.0
3027	Inter-Agency Financial	Admin - Department-wide	Division of Finance Chargeback for IRIS FIN, HRM, and ALDER	106.2	99.9	100.0
3028	Inter-Agency Americans with Disabilities Act Compliance	Admin - Department-wide	Americans with Disabilities Act (ADA) Chargeback	3.5	1.8	3.5
3035	Inter-Agency Other Equipment/Machinery	Trans - Central Design & Eng Svcs (2298)	Reimbursable Service Agreement (RSA) with Aviation Design to provide sign plan for Maintenance and Operations Certified Airports (\$2.5), RSA for Environmental support (\$12.5).	0.0	0.0	1.5
3037	State Equipment Fleet	Trans - State Equipment Fleet (2791)	State Equipment Fleet costs to include fuel services, asset maintenance and repair, accident damage, and equipment replacement allowable under circular	10,891.3	10,510.9	10,682.1

Line Item Detail (1676)
Department of Transportation and Public Facilities
Services

Component: Central Region Highways and Aviation (564)

Object Class		Servicing Agency	Explanation	FY2023 Actuals	FY2024 Management Plan	FY2025 Governor
			3000 Services Detail Totals	17,270.8	13,437.1	13,483.2
			A87.			
3038	Inter-Agency Management/Consulting	Trans - Central Construction & CIP (2293)	Central Region Construction contract support.	10.0	0.0	0.0
3039	DOT/PF Time & Equipment System		Vehicle usage billed to the operating budget based on established rates and actual usage of vehicles.	-1,566.5	0.0	0.0

Line Item Detail (1676)
Department of Transportation and Public Facilities
Commodities

Component: Central Region Highways and Aviation (564)

Line Number	Line Name		FY2023 Actuals	FY2024 Management Plan	FY2025 Governor
4000	Commodities		8,726.2	10,310.1	11,500.0
Object Class	Servicing Agency	Explanation	FY2023 Actuals	FY2024 Management Plan	FY2025 Governor
4000 Commodities Detail Totals			8,726.2	10,310.1	11,500.0
4000	Business	General office supplies including pens/pencils, paper, stationery, tape, binders, forms, film, furniture, cables, and other related data processing supplies and training supplies.	62.5	50.0	114.1
4002	Household/Institutional	Protective clothing and supplies such as gloves, hip boots, hard hats, safety vests, safety glasses, and coveralls. Also includes absorbent towels, solvent, cleaners, floor sweep, barrels for used oil and hazardous waste storage, trash cans and other needed cleaning supplies.	18.3	21.0	25.0
4004	Safety	Firearms and ammunition used in avalanche and bird control, fire suppressant chemicals and other supplies for airport firefighting and rescue vehicles.	13.1	16.1	124.6
4005	Building Materials	Building materials, lumber for structural repairs, and fencing materials.	21.9	27.4	50.0
4006	Signs and Markers	Signs, school zone timers and markers to place along roadways, runways, and airports.	103.1	119.4	125.0
4007	Asphalt	Asphalt for road and runway repairs.	163.8	0.0	200.0
4008	Aggregate	Aggregate compounds such as gravel or slag used to form concrete.	8.7	9.3	50.0
4009	Guardrails	Guardrails.	65.9	100.2	225.0

Line Item Detail (1676)
Department of Transportation and Public Facilities
Commodities

Component: Central Region Highways and Aviation (564)

Object Class		Servicing Agency	Explanation	FY2023 Actuals	FY2024 Management Plan	FY2025 Governor
4000 Commodities Detail Totals				8,726.2	10,310.1	11,500.0
4010	Culverts		Culverts.	0.0	0.0	100.0
4011	Electrical		Electrical parts, such as for repairing traffic signals.	204.4	150.0	205.0
4012	Plumbing		Plumbing supplies.	19.6	24.6	15.0
4013	Lube Oils/Grease/Solvents		Lube oils and grease.	6.4	7.9	76.0
4014	Bottled Gas		Bottles gas, e.g. acetylene, oxygen, or other gas used for welding, etc.	3.1	4.8	33.9
4015	Parts and Supplies		Repair parts, chains, batteries, shop supplies, nuts, bolts, fasteners, fittings, metal stock, bench stock, and miscellaneous hardware used for repairs or maintenance.	1,221.7	756.2	1,423.1
4016	Paint/Preservatives		Traffic paint, beads and solvent for striping highways, airports and crosswalks.	157.9	0.0	847.2
4017	Sand		Sand for ice control and mixing with chemicals for better ice control on roadways.	1,152.6	1,993.2	1,808.3
4018	Surface Chemicals		Winter compounds for snow and ice removal from roads and runways.	2,936.8	4,200.0	3,468.9
4019	Small Tools/Minor Equipment		Small tools and minor equipment used for repairs or maintenance.	143.4	130.0	300.0
4020	Equipment Fuel		Bulk diesel fuel and unleaded gasoline for heavy equipment and vehicle usage.	2,423.0	2,700.0	2,308.9

Line Item Detail (1676)
Department of Transportation and Public Facilities
Capital Outlay

Component: Central Region Highways and Aviation (564)

Line Number	Line Name		FY2023 Actuals	FY2024 Management Plan	FY2025 Governor
5000	Capital Outlay		913.5	5.0	5.0
Object Class	Servicing Agency	Explanation	FY2023 Actuals	FY2024 Management Plan	FY2025 Governor
5000 Capital Outlay Detail Totals			913.5	5.0	5.0
5003	Capital Lease Payments	Anchorage Streetlight Energy Upgrades.	491.4	5.0	0.0
5004	Equipment	Equipment purchases and brine boss upgrades.	420.2	0.0	5.0
5999	DOT/PF Personal Services	T&E's incorrectly coded to 5999 should be personal services object 1000.	1.9	0.0	0.0

Revenue Detail (1681)
Department of Transportation and Public Facilities

Component: Central Region Highways and Aviation (564)

Revenue Type (OMB Fund Code) Revenue Source	Component	Comment	FY2023 Actuals	FY2024 Management Plan	FY2025 Governor
5005 GF/Prgm (1005 GF/Prgm)			285.5	386.1	386.9
5111 Program Receipts Transportation - Charges for Services		Highway Damages Recovered - Recovery of repair costs for damages done to state highway fixtures such as guardrails, signs, fences, light poles and bridge structures.	285.5	386.1	386.9
5007 I/A Rcpts (1007 I/A Rcpts)			174.4	251.9	254.5
5301 Inter-Agency Receipts	NatRes - Department-wide	Reimbursable service agreement with Department of Natural Resources for providing equipment and personnel fire suppression activity support.	4.0	35.0	35.0
5301 Inter-Agency Receipts	Trans - Statewide Aviation (1811)	Reimbursable service agreement with Statewide Aviation for providing airport personnel training assistance.	5.4	35.0	35.1
5301 Inter-Agency Receipts	Trans - Whittier Access and Tunnel (2510)	Reimbursable service agreement with Whittier Access & Tunnel - Equipment Operators out of Girdwood provide snow plowing, snow removal, grading and spring maintenance in and around the Whittier Tunnel.	165.0	181.9	184.4
5061 CIP Rcpts (1061 CIP Rcpts)			7,837.2	5,066.9	5,150.0
5351 Capital Improvement Project Inter-Agency		Capital improvement project receipts for work in direct support of capital projects.	5,137.3	4,138.5	4,203.6
5351 Capital Improvement Project Inter-Agency		Recovery of indirect costs from the capital budget via the department's Indirect Cost Allocation Plan (ICAP).	2,699.9	928.4	946.4

Revenue Detail (1681)
Department of Transportation and Public Facilities

Component: Central Region Highways and Aviation (564)

Revenue Type (OMB Fund Code) Revenue Source	Component	Comment	FY2023 Actuals	FY2024 Management Plan	FY2025 Governor
5108 Stat Desig (1108 Stat Desig)			2.2	149.2	149.2
5206 Statutory Designated Program Receipts - Contracts		Reimbursement from non-state and non-federal entities under contractual agreements requesting DOT&PF to provide maintenance services such as after-hours airport call outs and plowing open roads during winter months. Reimbursement is based on actual cost. AS 37.05.146(b)(3) defines contract reimbursements as a non-general fund source (Statutory Designated Program Receipts).	2.2	149.2	149.2
5214 WhitTunnel (1214 WhitTunnel)			58.2	60.8	61.9
5407 Whittier Tunnel Toll Receipts		Tolls collected for the use of Whittier Tunnel.	58.2	60.8	61.9
5244 AirptLease (1244 Rural Air)			935.7	897.0	912.2
5244 Rural Airport Lease Receipts		Revenue distributed from the department's rural airport leasing program operated by the Statewide Aviation component under various sections of the Alaska Aeronautic Act including AS 02.15.090 and Title 17 of the Alaska Administrative Code. AS 37.05.146(c)(68) defines charges, rentals, and fees for airport or air navigation facility contracts, leases and other arrangements as non-general fund program receipts.	935.7	726.7	784.4
5244 Rural Airport Lease Receipts		After hours call out.	0.0	72.5	30.0
5244 Rural Airport Lease Receipts		Security Screening & Fingerprinting Fees - Collection of fees associated with providing clearance badges and security screening	0.0	97.8	97.8

Revenue Detail (1681)
Department of Transportation and Public Facilities

Component: Central Region Highways and Aviation (564)

Revenue Type (OMB Fund Code) Revenue Source	Component	Comment	FY2023 Actuals	FY2024 Management Plan	FY2025 Governor
		(fingerprinting and background checks), as necessary for homeland security at certificated rural airports.			
5265 COVID Fed (1265 COVID Fed)			3,769.5	2,978.3	28.2
5028 Federal COVID Stimulus - Miscellaneous Grants		Federal Aviation Administration Coronavirus Response and Relief Supplemental Appropriations Act (CRRSAA) and Coronavirus Aid, Relief, and Economic Security Act (CARES) grants.	3,769.5	2,978.3	28.2
6004 Gen Fund (1004 Gen Fund)			3.1	0.0	0.0
6046 General Fund - Prior Year Reimbursement Recovery		Prior year reimbursement recovery.	3.1	0.0	0.0

Inter-Agency Services (1682)
Department of Transportation and Public Facilities

Component: Central Region Highways and Aviation (564)

				FY2023 Actuals	FY2024 Management Plan	FY2025 Governor
Component Totals				11,553.5	11,253.8	11,354.4
With Department of Environmental Conservation				2.9	6.0	0.0
With Department of Transportation and Public Facilities				10,902.0	10,554.9	10,703.6
With Department of Administration				647.4	692.9	650.8
With Department of Law				1.2	0.0	0.0
Object Class	Servicing Agency	Explanation	FY2023 Actuals	FY2024 Management Plan	FY2025 Governor	
3015	Inter-Agency Conservation/Environmental	EnvCon - Department-wide	Stormwater permits.	2.9	6.0	0.0
3015	Inter-Agency Conservation/Environmental	Trans - Central Design & Eng Svcs (2298)	Central Region Preliminary Design and Engineering Support to Central Region Highways and Aviation component.	0.7	44.0	20.0
3017	Inter-Agency Information Technology Non-Telecommunications	Admin - Department-wide	Office of Information Technology (OIT) Core Services	310.0	350.0	310.0
3018	Inter-Agency Information Technology Telecommunications	Admin - Department-wide	Telecommunications services provided by the Department of Administration such as basic telephone services, equipment and features, dedicated voice/data line service, statewide paging, two-way radio, and video conferencing.	31.4	35.0	31.5
3021	Inter-Agency Mail	Admin - Department-wide	Centralized mail services chargeback	0.7	0.8	0.8
3022	Inter-Agency Human Resources	Admin - Department-wide	Centralized human resource chargeback	166.3	174.6	175.0
3024	Inter-Agency Legal	Law - Department-wide	Legal services provided by the Department of Law.	1.2	0.0	0.0
3026	Inter-Agency Insurance	Admin - Department-wide	Liability insurance at our rural airports.	29.3	30.8	30.0
3027	Inter-Agency Financial	Admin - Department-wide	Division of Finance Chargeback for	106.2	99.9	100.0

Inter-Agency Services (1682)
Department of Transportation and Public Facilities

Component: Central Region Highways and Aviation (564)

Object Class		Servicing Agency	Explanation	FY2023 Actuals	FY2024 Management Plan	FY2025 Governor
3028	Inter-Agency Americans with Disabilities Act Compliance	Admin - Department-wide	IRIS FIN, HRM, and ALDER Americans with Disabilities Act (ADA) Chargeback	3.5	1.8	3.5
3035	Inter-Agency Other Equipment/Machinery	Trans - Central Design & Eng Svcs (2298)	Reimbursable Service Agreement (RSA) with Aviation Design to provide sign plan for Maintenance and Operations Certified Airports (\$2.5), RSA for Environmental support (\$12.5).	0.0	0.0	1.5
3037	State Equipment Fleet	Trans - State Equipment Fleet (2791)	State Equipment Fleet costs to include fuel services, asset maintenance and repair, accident damage, and equipment replacement allowable under circular A87.	10,891.3	10,510.9	10,682.1
3038	Inter-Agency Management/Consulting	Trans - Central Construction & CIP (2293)	Central Region Construction contract support.	10.0	0.0	0.0

Personal Services Expenditure Detail
Department of Transportation and Public Facilities

Scenario: FY2025 Governor (20959)
Component: Central Region Highways and Aviation (564)
RDU: Highways, Aviation and Facilities (408)

PCN	Job Class Title	Time Status	Retire Code	Barg Unit	Location	Salary Sched	Range / Step	Comp Months	Split / Count	Annual Salaries	COLA	Premium Pay	Annual Benefits	Total Costs	UGF Amount
25-0256	Administrative Officer 1	FT	A	GP	Anchorage	200	17C / D	12.0		64,226	4,585	0	46,540	115,351	78,381
25-0549	Mts/EI Jrny 2	FT	A	LL	Palmer	2BB	51J / K	12.0		75,386	0	6,673	54,369	136,428	98,842
25-0565	Mts/EI Jrny 2	FT	A	LL	Soldotna	2CC	51A / B	12.0		62,610	0	5,520	48,412	116,542	58,271
25-0569	Administrative Assistant 1	FT	A	GP	Homer	200	12J / K	12.0		54,073	3,860	0	42,198	100,131	98,929
25-0697	Engineer/Architect 1	FT	A	GP	Anchorage	200	22F / G	12.0		101,774	7,265	0	62,599	171,638	47,644
25-0780	Equipment Operator, Journey 2	FT	A	LL	Mcgrath	2JJ	53A / B	12.0		62,991	0	4,543	48,157	115,691	5,495
25-0935	Administrative Assistant 1	FT	A	GP	Palmer	200	12M / N	12.0		59,251	4,391	2,267	45,382	111,291	83,468
25-0974	Maint & OPS Spr	FT	A	SS	Anchorage	200	21N / O	12.0		115,379	0	20,000	80,954	216,333	118,983
25-0977	Maint & OPS Spr	FT	A	SS	Soldotna	200	21F / J	12.0		97,682	0	20,000	73,385	191,067	126,623
25-0979	Administrative Assistant 3	FT	A	GP	Palmer	200	15M / N	12.0		73,245	5,389	2,242	51,356	132,232	96,116
25-0980	Administrative Assistant 1	FT	A	GP	Anchorage	200	12O / P	12.0		63,153	4,508	0	46,081	113,742	88,888
25-0981	Maint & OPS Spr	FT	A	SS	Anchorage	200	21K	12.0		103,334	0	20,000	75,803	199,137	79,655
25-0982	Equipment Operator, Journey 2	FT	A	LL	Anchorage	2AA	53L	12.0		69,396	0	12,513	54,305	136,214	91,135
25-0983	Administrative Assistant 1	FT	A	GP	Soldotna	200	12G	12.0		51,383	3,668	0	41,047	96,098	73,323
25-0985	Equipment Operator, Journey 2	FT	A	LL	Palmer	2BB	53J	12.0		65,445	0	4,720	49,282	119,447	35,834
25-0992	Maint & OPS Mgr	FT	A	SS	Anchorage	200	23L	12.0		122,325	0	11,026	80,087	213,438	130,944
25-0997	Equipment Operator, Journey 2	FT	A	LL	Anchorage	2AA	53E / F	12.0		61,788	0	8,746	49,440	119,974	83,982
25-0998	Equipment Operator, Journey 2	FT	A	LL	Soldotna	2CC	53C / D	12.0		58,570	0	10,542	48,832	117,944	106,150
25-1000	Equipment Operator Foreman 1	FT	A	LL	Aniak	2JJ	51B / C	12.0		70,793	0	12,656	54,964	138,413	88,880
25-1003	Maint & OPS Sp	FT	A	GP	Anchorage	200	21A / B	12.0		80,730	5,763	0	53,599	140,092	84,055
25-1004	Rural Airport Foreman	FT	A	LL	Bethel	2II	49N	12.0		101,152	0	14,121	68,575	183,848	151,307
25-1007	Mts/EI Jrny 2	FT	A	LL	Anchorage	2AA	51K	12.0		75,781	0	5,466	54,022	135,269	81,161
25-1008	Mts/EI Jrny 2	FT	A	LL	Anchorage	2AA	51M	12.0		81,583	0	7,355	57,311	146,249	105,299
25-1009	Equipment Operator, Journey 1	FT	A	LL	Anchorage	2AA	54D / E	12.0		55,331	0	9,903	47,173	112,407	93,298
25-1010	Administrative Assistant 3	FT	A	GG	Soldotna	200	15P / Q	12.0		80,598	5,864	1,542	54,202	142,206	127,985
25-1012	Equipment Operator Foreman 1	FT	A	LL	Soldotna	2CC	51M / N	12.0		83,563	0	13,557	60,811	157,931	118,448
25-1017	E/Op Jrny 3	FT	A	LL	Homer	2CC	52C / D	12.0		62,830	0	12,873	51,651	127,354	31,839
25-1018	Equipment Operator, Journey 2	FT	A	LL	North Kenai Camp	2CC	53C / D	12.0		59,857	0	8,450	48,488	116,795	93,436
25-1019	Equipment Operator, Journey 2	FT	A	LL	Ninilchik	2CC	53E / F	12.0		62,763	0	7,689	49,405	119,857	53,329

Note: If a position is split, an asterisk (*) will appear in the Split/Count column. If the split position is also counted in the component, two asterisks (**) will appear in this column.
 [No valid job title] appearing in the Job Class Title indicates that the PCN has an invalid class code or invalid range for the class code effective date of this scenario.

Personal Services Expenditure Detail
Department of Transportation and Public Facilities

Scenario: FY2025 Governor (20959)
Component: Central Region Highways and Aviation (564)
RDU: Highways, Aviation and Facilities (408)

PCN	Job Class Title	Time Status	Retire Code	Barg Unit	Location	Salary Sched	Range / Step	Comp Months	Split / Count	Annual Salaries	COLA	Premium Pay	Annual Benefits	Total Costs	UGF Amount
25-1020	Equipment Operator, Journey 2	FT	A	LL	Soldotna	2CC	53B / C	12.0		56,991	0	6,070	46,244	109,305	85,258
25-1021	Mts/EI Jrny 2	FT	A	LL	Soldotna	2CC	51F / J	12.0		74,154	0	6,731	53,867	134,752	87,589
25-1022	E/Op Jrny 3	FT	A	LL	Bethel	2II	52K / L	12.0		79,950	0	10,322	57,882	148,154	143,709
25-1025	Equipment Operator, Journey 2	FT	A	LL	Crown Point	2CC	53B / C	12.0		56,344	0	2,023	44,236	102,603	61,562
25-1026	E/Op Jrny 3	FT	A	LL	Soldotna	2CC	52L / M	12.0		76,396	0	5,502	54,300	136,198	95,339
25-1030	Equipment Operator, Journey 2	FT	A	LL	Anchorage	2AA	53N / O	12.0		76,220	0	8,189	55,374	139,783	83,870
25-1036	Administrative Assistant 3	FT	A	GP	Anchorage	200	15E / F	12.0		60,973	4,596	3,409	46,607	115,585	84,865
25-1037	Equipment Operator, Journey 2	FT	A	LL	Palmer	2BB	53C / D	12.0		58,880	0	8,307	48,008	115,195	69,117
25-1038	Rural Airport Foreman	FT	A	LL	Dillingham	2II	49K	12.0		91,398	0	6,592	61,183	159,173	131,795
25-1039	E/Op Jrny 3	FT	A	LL	Dillingham	2II	52B / C	12.0		66,995	0	7,123	50,973	125,091	93,818
25-1041	Equipment Operator, Journey 2	FT	A	LL	North Kenai Camp	2CC	53D / E	12.0		61,653	0	10,811	50,265	122,729	61,365
25-1042	Equipment Operator, Journey 2	FT	A	LL	Homer	2CC	53C / D	12.0		58,016	0	6,275	46,770	111,061	95,290
25-1044	Equipment Operator, Journey 2	FT	A	LL	Girdwood	2AA	53F	12.0		62,138	0	7,843	49,203	119,184	6,114
25-1045	Equipment Operator, Journey 2	FT	A	LL	Soldotna	2CC	53A / B	12.0		56,062	0	9,004	47,101	112,167	100,950
25-1046	Equipment Operator Foreman 1	FT	A	LL	Palmer	2BB	51Q	12.0		95,495	0	6,888	63,062	165,445	140,628
25-1047	Equipment Operator, Journey 2	FT	A	LL	Palmer	2BB	53F / J	12.0		64,086	0	10,332	51,101	125,519	100,415
25-1048	Equipment Operator, Journey 2	FT	A	LL	Palmer	2BB	53B / C	12.0		56,045	0	1,988	44,093	102,126	83,743
25-1050	Equipment Operator, Journey 2	FT	A	LL	Chulitna	2CC	53B / C	12.0		57,874	0	8,296	47,574	113,744	96,682
25-1051	E/Op Jrny 3	FT	A	LL	Dillingham	2II	52E / F	12.0		72,817	0	11,398	55,291	139,506	33,621
25-1052	Equipment Operator, Journey 2	FT	A	LL	Palmer	2BB	53M / N	12.0		74,100	0	9,211	54,905	138,216	96,751
25-1053	Equipment Operator, Journey 2	FT	A	LL	Palmer	2BB	53F	12.0		63,116	0	11,381	51,135	125,632	100,506
25-1055	E/Op Jrny 3	FT	A	LL	Palmer	2BB	52A / B	12.0		58,305	0	8,223	47,727	114,255	98,259
25-1056	Equipment Operator, Journey 2	FT	A	LL	Palmer	2BB	53F	12.0		63,116	0	10,243	50,648	124,007	105,406
25-1057	Equipment Operator,	FT	A	LL	Palmer	2BB	53D / E	12.0		59,504	0	8,592	48,397	116,493	93,194

Note: If a position is split, an asterisk (*) will appear in the Split/Count column. If the split position is also counted in the component, two asterisks (**) will appear in this column. [No valid job title] appearing in the Job Class Title indicates that the PCN has an invalid class code or invalid range for the class code effective date of this scenario.

Personal Services Expenditure Detail
Department of Transportation and Public Facilities

Scenario: FY2025 Governor (20959)
Component: Central Region Highways and Aviation (564)
RDU: Highways, Aviation and Facilities (408)

PCN	Job Class Title	Time Status	Retire Code	Barg Unit	Location	Salary Sched	Range / Step	Comp Months	Split / Count	Annual Salaries	COLA	Premium Pay	Annual Benefits	Total Costs	UGF Amount
	Journey 2														
25-1058	E/Op Jrny 3	FT	A	LL	Homer	2CC	52D / E	12.0		65,601	0	8,318	50,888	124,807	118,567
25-1060	E/Op Jrny 3	FT	A	LL	Homer	2CC	52B / C	12.0		61,751	0	8,646	49,381	119,778	113,789
25-1061	Equipment Operator, Journey 2	FT	A	LL	Homer	2CC	53F	12.0		64,093	0	9,246	50,640	123,979	105,382
25-1062	Equipment Operator, Journey 2	FT	A	LL	Homer	2CC	53D / E	12.0		61,823	0	9,815	49,912	121,550	115,473
25-1064	Equipment Operator, Journey 2	FT	A	LL	Soldotna	2CC	53B / C	12.0		56,691	0	8,174	47,015	111,880	67,128
25-1065	Equipment Operator, Journey 2	FT	A	LL	Homer	2CC	53J	12.0		66,422	0	9,676	51,820	127,918	102,334
25-1066	E/Op Jrny 3	FT	A	LL	Homer	2CC	52L	12.0		76,280	0	11,113	56,651	144,044	136,842
25-1067	Equipment Operator, Journey 2	FT	A	LL	Homer	2CC	53M	12.0		73,951	0	6,667	53,753	134,371	107,497
25-1068	E/Op Jrny 3	FT	A	LL	Anchorage	2AA	52F / J	12.0		68,523	0	7,295	51,700	127,518	108,390
25-1070	Mts/Bfc Frmn	FT	A	LL	Palmer	2BB	50K	12.0		80,709	0	11,643	58,772	151,124	90,674
25-1071	Equipment Operator, Journey 2	FT	A	LL	Anchorage	2AA	53E / F	12.0		61,176	0	10,826	50,068	122,070	103,760
25-1072	Equipment Operator, Journey 2	FT	A	LL	Anchorage	2AA	53M	12.0		71,996	0	14,540	56,284	142,820	121,397
25-1073	Equipment Operator, Journey 2	FT	A	LL	Anchorage	2AA	53E / F	12.0		61,351	0	4,330	47,364	113,045	67,827
25-1075	Equipment Operator, Journey 1	FT	A	LL	Anchorage	2AA	54B / C	12.0		52,411	0	5,023	43,837	101,271	75,953
25-1076	Equipment Operator, Journey 2	FT	A	LL	Soldotna	2CC	53K	12.0		68,835	0	9,930	52,960	131,725	111,966
25-1077	Equipment Operator, Journey 2	FT	A	LL	Anchorage	2AA	53C / D	12.0		56,176	0	6,063	45,892	108,131	91,911
25-1078	Equipment Operator, Journey 1	FT	A	LL	Anchorage	2AA	54A / B	12.0		50,271	0	12,400	46,077	108,748	65,249
25-1079	Equipment Operator, Journey 1	FT	A	LL	Anchorage	2AA	54A / B	12.0		50,271	0	8,928	44,592	103,791	83,033
25-1080	Equipment Operator, Journey 2	FT	A	LL	Quartz Creek	2CC	53K / L	12.0		69,883	0	7,447	52,347	129,677	92,071
25-1081	Equipment Operator, Journey 1	FT	A	LL	Anchorage	2AA	54B / C	12.0		51,293	0	4,584	43,171	99,048	84,191
25-1082	Equipment Operator, Journey 2	FT	A	LL	Anchorage	2AA	53L / M	12.0		70,501	0	10,011	53,708	134,220	93,954
25-1083	Equipment Operator,	FT	A	LL	Anchorage	2AA	53O / P	12.0		79,205	0	8,385	56,735	144,325	72,163

Note: If a position is split, an asterisk (*) will appear in the Split/Count column. If the split position is also counted in the component, two asterisks (**) will appear in this column.
 [No valid job title] appearing in the Job Class Title indicates that the PCN has an invalid class code or invalid range for the class code effective date of this scenario.

Personal Services Expenditure Detail
Department of Transportation and Public Facilities

Scenario: FY2025 Governor (20959)
Component: Central Region Highways and Aviation (564)
RDU: Highways, Aviation and Facilities (408)

PCN	Job Class Title	Time Status	Retire Code	Barg Unit	Location	Salary Sched	Range / Step	Comp Months	Split / Count	Annual Salaries	COLA	Premium Pay	Annual Benefits	Total Costs	UGF Amount
25-1084	Journey 2 Equipment Operator, Journey 1	FT	A	LL	Anchorage	2AA	54B / C	12.0		51,487	0	11,074	46,030	108,591	86,873
25-1085	E/Op Jrny 3	FT	A	LL	Bethel	2II	52F	12.0		74,408	0	12,192	56,311	142,911	138,910
25-1086	Equipment Operator, Journey 1	FT	A	LL	Anchorage	2AA	54B / C	12.0		52,381	0	9,241	45,628	107,250	85,800
25-1087	E/Op Jrny 3	FT	A	LL	Dillingham	2II	52E / F	12.0		73,940	0	6,246	53,568	133,754	108,073
25-1088	E/Op Jrny 3	FT	A	LL	Anchorage	2AA	52M	12.0		77,112	0	11,234	57,058	145,404	120,685
25-1089	Equipment Operator, Journey 2	FT	A	LL	Anchorage	2AA	53K	12.0		66,880	0	9,743	52,044	128,667	102,934
25-1090	Equipment Operator Foreman 2	FT	A	LL	Anchorage	2AA	50P / Q	12.0		99,317	0	6,915	64,708	170,940	128,205
25-1091	Equipment Operator, Journey 2	FT	A	LL	Crown Point	2CC	53C / D	12.0		59,287	0	12,633	50,033	121,953	73,172
25-1094	E/Op Jrny 3	FT	A	LL	Seldovia	2CC	52J	12.0		70,998	0	7,681	52,924	131,603	118,443
25-1096	E/Op Jrny 3	FT	A	LL	Girdwood	2AA	52Q	12.0		89,340	0	12,888	62,996	165,224	68,216
25-1097	Equipment Operator, Journey 2	FT	A	LL	Girdwood	2AA	53A / B	12.0		54,153	0	7,812	45,775	107,740	73,263
25-1098	Equipment Operator, Journey 2	FT	A	LL	Girdwood	2AA	53N	12.0		74,699	0	10,776	55,830	141,305	84,077
25-1100	E/Op Jrny 3	FT	A	LL	Willow	2CC	52Q	12.0		91,294	0	13,170	63,952	168,416	84,208
25-1101	Equipment Operator, Journey 2	FT	A	LL	Willow	2CC	53C / D	12.0		59,108	0	8,367	48,132	115,607	46,243
25-1102	Mts/EI Jrny 2	FT	A	LL	Palmer	2BB	51J	12.0		74,013	0	8,007	54,353	136,373	81,824
25-1103	Equipment Operator, Journey 2	FT	A	LL	Willow	2CC	53C / D	12.0		59,254	0	9,412	48,641	117,307	82,115
25-1104	E/Op Jrny 3	FT	A	LL	Chulitna	2CC	52L / M	12.0		78,370	0	11,004	57,498	146,872	102,810
25-1105	Equipment Operator, Journey 2	FT	A	LL	Palmer	2BB	53F / J	12.0		64,669	0	9,105	50,826	124,600	62,300
25-1106	Equipment Operator, Journey 2	FT	A	LL	Talkeetna	2CC	53F	12.0		64,093	0	6,934	49,651	120,678	60,339
25-1107	Equipment Operator, Journey 2	FT	A	LL	Chulitna	2CC	53N	12.0		76,654	0	8,293	55,604	140,551	70,276
25-1108	Equipment Operator, Journey 2	FT	A	LL	Chulitna	2CC	53C / D	12.0		59,450	0	9,412	48,725	117,587	58,794
25-1109	E/Op Jrny 3	FT	A	LL	Cascade	2CC	52E / F	12.0		67,604	0	4,779	50,231	122,614	83,378
25-1110	Equipment Operator, Journey 1	FT	A	LL	Cascade	2CC	54B / C	12.0		53,025	0	4,760	43,987	101,772	55,975
25-1111	Equipment Operator,	FT	A	LL	Cascade	2CC	53D / E	12.0		60,753	0	4,324	47,106	112,183	61,701

Note: If a position is split, an asterisk (*) will appear in the Split/Count column. If the split position is also counted in the component, two asterisks (**) will appear in this column.
 [No valid job title] appearing in the Job Class Title indicates that the PCN has an invalid class code or invalid range for the class code effective date of this scenario.

Personal Services Expenditure Detail
Department of Transportation and Public Facilities

Scenario: FY2025 Governor (20959)
Component: Central Region Highways and Aviation (564)
RDU: Highways, Aviation and Facilities (408)

PCN	Job Class Title	Time Status	Retire Code	Barg Unit	Location	Salary Sched	Range / Step	Comp Months	Split / Count	Annual Salaries	COLA	Premium Pay	Annual Benefits	Total Costs	UGF Amount
25-1112	Journey 2 Equipment Operator, Journey 2	FT	A	LL	Cascade	2CC	53D / E	12.0		61,195	0	10,811	50,070	122,076	48,830
25-1115	E/Op Jrny 3	FT	A	LL	North Kenai Camp	2CC	52N / O	12.0		83,579	0	11,823	60,076	155,478	93,287
25-1118	E/Op Jrny 3	FT	A	LL	Crown Point	2CC	52A / B	12.0		59,282	0	12,546	49,993	121,821	67,002
25-1119	Equipment Operator, Journey 2	FT	A	LL	Crown Point	2CC	53B / C	12.0		56,896	0	9,105	47,501	113,502	88,532
25-1120	Equipment Operator, Journey 2	FT	A	LL	Soldotna	2CC	53A	12.0		54,278	0	2,035	43,358	99,671	64,786
25-1121	Equipment Operator, Journey 2	FT	A	LL	Crown Point	2CC	53E / F	12.0		62,115	0	11,178	50,620	123,913	57,000
25-1122	E/Op Jrny 3	FT	A	LL	Quartz Creek	2CC	52F	12.0		68,502	0	4,941	50,684	124,127	80,683
25-1123	Equipment Operator, Journey 2	FT	A	LL	Anchorage	2AA	53Q	12.0		83,434	0	9,027	58,818	151,279	143,715
25-1124	Equipment Operator, Journey 2	FT	A	LL	Quartz Creek	2CC	53N	12.0		76,654	0	8,293	55,604	140,551	77,303
25-1127	E/Op Jrny 3	FT	A	LL	Ninilchik	2CC	52A	12.0		57,979	0	8,364	47,648	113,991	51,296
25-1128	Equipment Operator, Journey 2	FT	A	LL	Homer	2CC	53P	12.0		82,373	0	8,021	57,934	148,328	114,806
25-1129	Equipment Operator, Journey 2	FT	A	LL	Palmer	2BB	53J / K	12.0		65,747	0	9,441	51,431	126,619	101,295
25-1130	Equipment Operator, Journey 2	FT	A	LL	Ninilchik	2CC	53N	12.0		76,654	0	8,293	55,604	140,551	77,303
25-1133	E/Op Jrny 3	FT	A	LL	Anchorage	2AA	52J / K	12.0		70,884	0	11,055	54,318	136,257	88,567
25-1134	Equipment Operator, Journey 2	FT	A	LL	Anchorage	2AA	53K / L	12.0		66,985	0	10,466	52,398	129,849	84,402
25-1135	Equipment Operator, Journey 1	FT	A	LL	Anchorage	2AA	54B / C	12.0		51,860	0	7,335	44,590	103,785	83,028
25-1136	Equipment Operator, Journey 2	FT	A	LL	Anchorage	2AA	53J	12.0		64,468	0	9,300	50,823	124,591	92,197
25-1137	Equipment Operator, Journey 2	FT	A	LL	Anchorage	2AA	53D / E	12.0		59,393	0	9,914	48,915	118,222	105,218
25-1138	Equipment Operator, Journey 2	FT	A	LL	Anchorage	2AA	53M / N	12.0		74,587	0	10,488	55,659	140,734	119,624
25-1141	Equipment Operator Foreman 2	FT	A	LL	Homer	2CC	50R	12.0		105,145	0	15,168	70,730	191,043	191,043
25-1142	Equipment Operator, Journey 2	FT	A	LL	Anchorage	2AA	53N / O	12.0		76,103	0	10,776	56,431	143,310	128,979

Note: If a position is split, an asterisk (*) will appear in the Split/Count column. If the split position is also counted in the component, two asterisks (**) will appear in this column.
[No valid job title] appearing in the Job Class Title indicates that the PCN has an invalid class code or invalid range for the class code effective date of this scenario.

Personal Services Expenditure Detail
Department of Transportation and Public Facilities

Scenario: FY2025 Governor (20959)
Component: Central Region Highways and Aviation (564)
RDU: Highways, Aviation and Facilities (408)

PCN	Job Class Title	Time Status	Retire Code	Barg Unit	Location	Salary Sched	Range / Step	Comp Months	Split / Count	Annual Salaries	COLA	Premium Pay	Annual Benefits	Total Costs	UGF Amount
25-1143	E/Op Jrny 3	FT	A	LL	Talkeetna	2CC	52K	12.0		73,597	0	6,635	53,588	133,820	68,248
25-1144	E/Op Jrny 3	FT	A	LL	Dillingham	2II	52F / J	12.0		75,448	0	5,367	53,837	134,652	121,187
25-1145	E/Op Jrny 3	FT	A	LL	Dillingham	2II	52J	12.0		76,904	0	6,656	55,011	138,571	138,571
25-1146	Equipment Operator, Journey 2	FT	A	LL	Anchorage	2AA	53C / D	12.0		56,567	0	4,042	45,195	105,804	59,250
25-1150	Equipment Operator Foreman 1	FT	A	LL	Mcgrath	2JJ	51O / P	12.0		98,440	0	13,944	67,339	179,723	102,442
25-1152	Equipment Operator, Journey 2	FT	A	LL	Aniak	2JJ	53B / C	12.0		64,852	0	7,496	50,216	122,564	80,892
25-1153	Equipment Operator, Journey 2	FT	A	LL	North Kenai Camp	2CC	53B / C	12.0		56,644	0	10,117	47,826	114,587	91,670
25-1156	Office Assistant 2	FT	A	GP	Dillingham	237	10B / C	12.0		53,431	3,814	0	41,923	99,168	31,436
25-1161	Equipment Operator, Journey 1	FT	A	LL	Anchorage	2AA	54A	12.0		49,120	0	7,086	43,312	99,518	84,590
25-1162	Equipment Operator, Journey 2	FT	A	LL	Anchorage	2AA	53K / L	12.0		68,243	0	4,824	50,523	123,590	98,872
25-1165	Equipment Operator, Journey 2	FT	A	LL	Palmer	2BB	53C / D	12.0		58,212	0	8,226	47,688	114,126	79,888
25-1166	Equipment Operator, Journey 2	FT	A	LL	Palmer	2BB	53Q	12.0		84,411	0	7,122	58,421	149,954	89,972
25-1167	Equipment Operator, Journey 2	FT	A	LL	Willow	2CC	53K / L	12.0		70,512	0	9,681	53,571	133,764	86,947
25-1169	Administrative Assistant 3	FT	A	GP	Anchorage	200	15K / L	12.0		68,792	5,023	1,577	49,167	124,559	112,103
25-1177	Equipment Operator, Journey 2	FT	A	LL	Ninilchik	2CC	53A / B	12.0		55,498	0	7,830	46,358	109,686	49,359
25-1182	S&E Spt Spec	FT	A	GP	Anchorage	200	17K	12.0		78,254	6,553	13,543	58,332	156,682	156,682
25-1185	Office Assistant 2	FT	A	GP	Bethel	250	10M	12.0		77,454	5,550	297	52,325	135,626	31,194
25-1187	Maint & OPS Spr	FT	A	SS	Palmer	200	21M	12.0		110,157	0	20,000	78,721	208,878	73,455
25-1207	Accounting Technician 2	FT	A	GP	Anchorage	200	14B / C	12.0		50,446	3,601	0	40,646	94,693	75,754
25-1214	Administrative Assistant 1	FT	A	GP	Anchorage	200	12F / G	12.0		50,754	3,623	0	40,778	95,155	85,640
25-1216	Administrative Officer 2	FT	A	SS	Anchorage	200	19J / K	12.0		90,082	0	0	61,581	151,663	125,880
25-1217	Engineer/Architect 4	FT	A	SS	Anchorage	200	26J	12.0		136,490	0	0	81,429	217,919	103,729
25-3052	Equipment Operator, Journey 2	FT	A	LL	Willow	2CC	53N / O	12.0		77,005	0	5,971	54,761	137,737	103,303
25-3429	Equipment Operator, Journey 2	FT	A	LL	Soldotna	2CC	53K	12.0		68,835	0	12,511	54,064	135,410	128,640
25-3430	Equipment Operator, Journey 2	FT	A	LL	Soldotna	2CC	53Q	12.0		85,388	0	9,238	59,744	154,370	131,215
25-3431	Equipment Operator,	FT	A	LL	Quartz Creek	2CC	53M	12.0		73,951	0	10,240	55,281	139,472	90,657

Note: If a position is split, an asterisk (*) will appear in the Split/Count column. If the split position is also counted in the component, two asterisks (**) will appear in this column. [No valid job title] appearing in the Job Class Title indicates that the PCN has an invalid class code or invalid range for the class code effective date of this scenario.

Personal Services Expenditure Detail
Department of Transportation and Public Facilities

Scenario: FY2025 Governor (20959)
Component: Central Region Highways and Aviation (564)
RDU: Highways, Aviation and Facilities (408)

PCN	Job Class Title	Time Status	Retire Code	Barg Unit	Location	Salary Sched	Range / Step	Comp Months	Split / Count	Annual Salaries	COLA	Premium Pay	Annual Benefits	Total Costs	UGF Amount
25-3432	Journey 2 Equipment Operator, Journey 2	FT	A	LL	Girdwood	2AA	53D / E	12.0		59,376	0	7,321	47,799	114,496	67,553
25-3433	Equipment Operator, Journey 2	FT	A	LL	Girdwood	2AA	53L	12.0		69,396	0	8,309	52,507	130,212	78,127
25-3434	E/Op Jrny 3	FT	A	LL	Anchorage	2AA	52N	12.0		80,002	0	11,541	58,426	149,969	142,471
25-3573	Airport Operations Specialist	FT	A	SS	Bethel	250	19F	12.0		127,483	0	13,790	83,475	224,748	202,273
25-3592	Maint & OPS Sp	FT	A	GP	Anchorage	200	21C / D	12.0		84,201	6,011	0	55,083	145,295	130,766
25-3639	E/Op Jrny 3	FT	A	LL	Bethel	2II	52C	12.0		67,878	0	12,240	53,539	133,657	107,794
25-3649	Equipment Operator, Journey 2	FT	A	LL	Chulitna	2CC	53F	12.0		64,093	0	9,246	50,640	123,979	81,330
25-3717	E/Op Jrny 3	FT	A	LL	Dillingham	2II	52J	12.0		76,904	0	5,824	54,655	137,383	137,383
25-3773	Equipment Operator, Journey 2	FT	A	LL	Anchorage	2AA	53E / F	12.0		61,438	0	7,578	48,791	117,807	111,917
25-3774	Equipment Operator, Journey 2	FT	A	LL	Palmer	2BB	53F	12.0		63,116	0	4,552	48,214	115,882	104,294
25-3781	Environmental Impact Analyst 3	FT	A	GP	Anchorage	200	19L	12.0		92,352	6,593	0	58,570	157,515	110,261
25-3782	Equipment Operator, Journey 1	PT	A	LL	Anchorage	2AA	54J	6.0		30,279	0	4,368	24,455	59,102	50,237
25-3783	Equipment Operator, Journey 1	PT	A	LL	Anchorage	2AA	54F / J	6.0		29,460	0	6,315	24,937	60,712	42,498
25-3785	Equipment Operator, Journey 1	PT	A	LL	Anchorage	2AA	54A	6.0		24,560	0	7,086	23,171	54,817	38,372
25-3788	Equipment Operator, Journey 1	PT	A	LL	Anchorage	2AA	54A	6.0		24,560	0	7,617	23,398	55,575	47,239
25-3802	Mts/EI Jrny 2	FT	A	LL	Anchorage	2AA	51E / F	12.0		69,703	0	9,813	53,282	132,798	92,959
25-3811	E/Op Jrny 3	FT	A	LL	Bethel	2II	52A / B	12.0		65,189	0	9,216	51,096	125,501	89,106
25-3812	E/Op Jrny 3	FT	A	LL	Bethel	2II	52A / B	12.0		65,189	0	4,608	49,125	118,922	8,325
25-3813	E/Op Jrny 3	FT	A	LL	Bethel	2II	52A / B	12.0		65,189	0	9,307	51,135	125,631	123,118
25-3814	E/Op Jrny 3	FT	A	LL	Bethel	2II	52C / D	12.0		69,226	0	9,889	53,110	132,225	52,890
25-3857	Equipment Operator, Journey 2	FT	A	LL	Silvertip	2CC	53L	12.0		71,351	0	5,146	51,990	128,487	115,638
25-3858	Equipment Operator, Journey 2	FT	A	LL	Silvertip	2CC	53A / B	12.0		56,108	0	8,094	46,732	110,934	44,374
25-3859	Equipment Operator, Journey 2	FT	A	LL	Silvertip	2CC	53B / C	12.0		56,770	0	8,094	47,015	111,879	30,207
25-3860	Equipment Operator, Journey 2	FT	A	LL	Silvertip	2CC	53A / B	12.0		55,498	0	7,830	46,358	109,686	49,359

Note: If a position is split, an asterisk (*) will appear in the Split/Count column. If the split position is also counted in the component, two asterisks (**) will appear in this column.
 [No valid job title] appearing in the Job Class Title indicates that the PCN has an invalid class code or invalid range for the class code effective date of this scenario.

Personal Services Expenditure Detail
Department of Transportation and Public Facilities

Scenario: FY2025 Governor (20959)
Component: Central Region Highways and Aviation (564)
RDU: Highways, Aviation and Facilities (408)

PCN	Job Class Title	Time Status	Retire Code	Barg Unit	Location	Salary Sched	Range / Step	Comp Months	Split / Count	Annual Salaries	COLA	Premium Pay	Annual Benefits	Total Costs	UGF Amount
25-3861	E/Op Jrny 3	FT	A	LL	Silvertip	2CC	52Q	12.0		91,294	0	13,170	63,952	168,416	101,050
25-N09019	E/Op Subjrny 1	NP	N	LL	Soldotna	2CC	58A	6.0		20,598	0	12,628	4,552	37,778	0
25-N09020	E/Op Subjrny 1	NP	N	LL	Soldotna	2CC	58A	6.0		20,598	0	13,371	4,654	38,623	0
25-N09025	E/Op Subjrny 1	NP	N	LL	Palmer	2BB	58A	6.0		20,131	0	7,840	3,832	31,803	0
25-N09026	E/Op Subjrny 1	NP	N	LL	Palmer	2BB	58A	6.0		20,131	0	7,260	3,753	31,144	0
25-N09027	E/Op Subjrny 1	NP	N	LL	Palmer	2BB	58A	6.0		20,131	0	7,260	3,753	31,144	0
25-N09028	E/Op Subjrny 1	NP	N	LL	Palmer	2BB	58A	6.0		20,131	0	6,534	3,653	30,318	0
25-N09034	E/Op Subjrny 1	NP	N	LL	Soldotna	2CC	58A	6.0		20,598	0	2,971	3,229	26,798	0
25-N09035	E/Op Subjrny 1	NP	N	LL	Soldotna	2CC	58A	12.0		41,197	0	5,943	6,458	53,598	0
25-N09036	E/Op Subjrny 1	NP	N	LL	Soldotna	2CC	58A	6.0		20,598	0	11,886	4,450	36,934	0
25-N09037	E/Op Subjrny 1	NP	N	LL	Soldotna	2CC	58A	6.0		20,598	0	13,371	4,654	38,623	0
25-N10056	E/Op Subjrny 1	NP	N	LL	Anchorage	2AA	58A	6.0		19,673	0	7,095	3,667	30,435	0
25-N10057	E/Op Subjrny 1	NP	N	LL	Anchorage	2AA	58A	6.0		19,673	0	7,095	3,667	30,435	0
25-N10058	E/Op Subjrny 1	NP	N	LL	Anchorage	2AA	58A	6.0		19,673	0	7,095	3,667	30,435	0
25-N10059	E/Op Subjrny 1	NP	N	LL	Anchorage	2AA	58A	6.0		19,673	0	7,095	3,667	30,435	0

	Total Positions	New	Deleted	Total Salary Costs:	Total COLA:	Total Premium Pay:	Total Benefits:
				12,140,740	90,657	1,495,400	8,993,507
Full Time Positions:	167	0	0				
Part Time Positions:	4	0	0				
Non Permanent Positions:	14	0	0				
Positions in Component:	185	0	0				
				Total Pre-Vacancy:			22,720,304
				Minus Vacancy Adjustment of 6.25%:			(1,421,104)
				Total Post-Vacancy:			21,299,200
				Plus Lump Sum Premium Pay:			0
				Personal Services Line 100:			21,299,200

PCN Funding Sources:	Pre-Vacancy	Post-Vacancy	Percent
1004 Unrestricted General Fund Receipts	15,369,719	14,408,377	67.65%
1005 General Fund/Program Receipts	79,617	74,637	0.35%
1007 Interagency Receipts	138,422	129,764	0.61%
1039 Unallocated Indirect Cost Recovery	434,689	407,500	1.91%
1061 Capital Improvement Project Receipts	4,412,671	4,136,668	19.42%
1214 Whittier Tunnel Toll Receipts	66,063	61,930	0.29%
1239 Aviation Fuel Tax Account	1,527,015	1,431,504	6.72%
1244 Rural Airport Receipts	692,109	648,819	3.05%
Total PCN Funding:	22,720,304	21,299,200	100.00%

Note: If a position is split, an asterisk (*) will appear in the Split/Count column. If the split position is also counted in the component, two asterisks (**) will appear in this column. [No valid job title] appearing in the Job Class Title indicates that the PCN has an invalid class code or invalid range for the class code effective date of this scenario.

Personal Services Expenditure Detail
Department of Transportation and Public Facilities

Scenario: FY2025 Governor (20959)
Component: Central Region Highways and Aviation (564)
RDU: Highways, Aviation and Facilities (408)

Note: If a position is split, an asterisk (*) will appear in the Split/Count column. If the split position is also counted in the component, two asterisks (**) will appear in this column.
[No valid job title] appearing in the Job Class Title indicates that the PCN has an invalid class code or invalid range for the class code effective date of this scenario.

Department of Transportation & Public Facilities

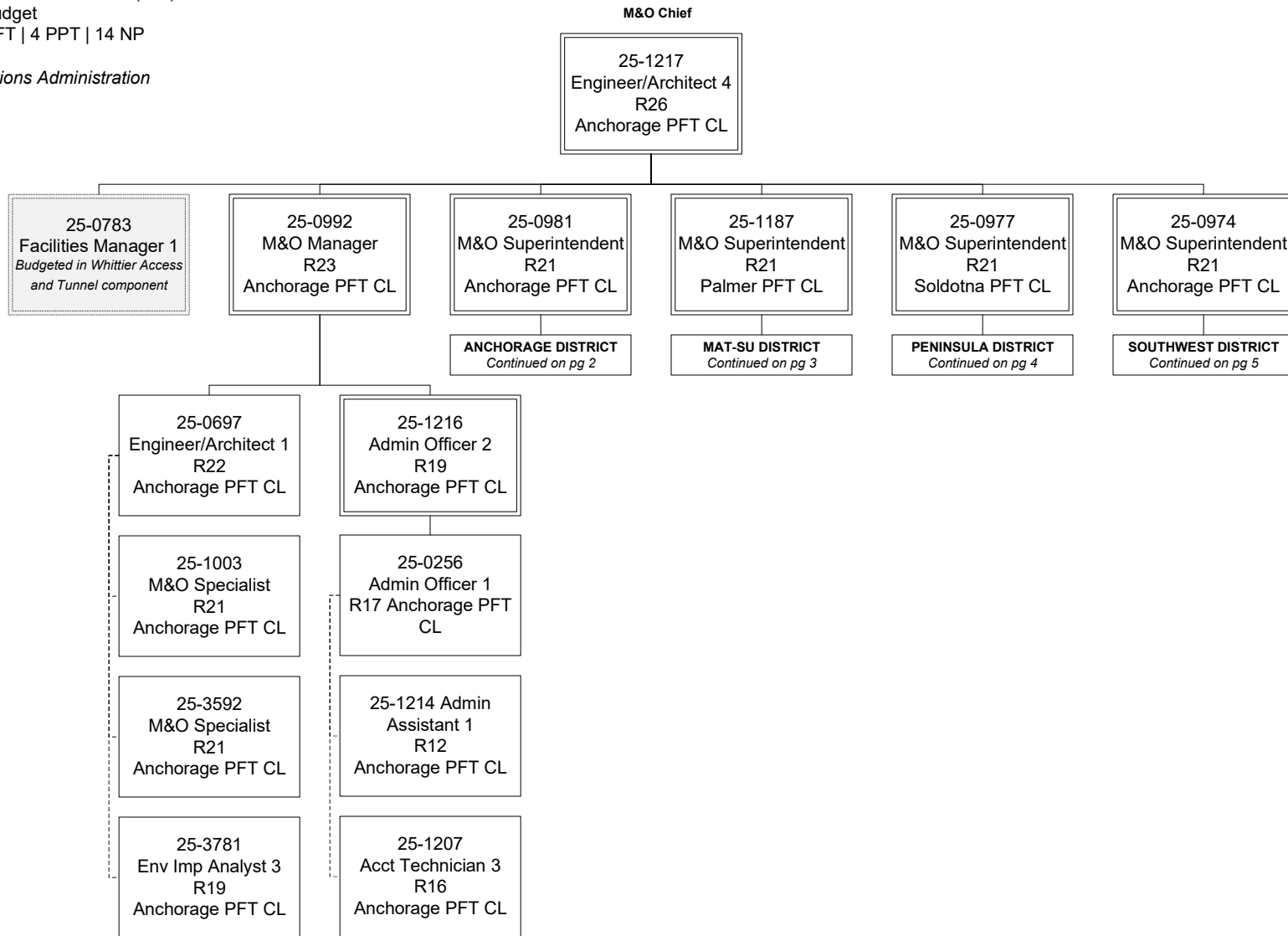
Central Region Highways and Aviation (564)

RDU: Highways, Aviation and Facilities (408)

FY2025 Governor's Budget

Position Totals: 167 PFT | 4 PPT | 14 NP

Maintenance & Operations Administration



Department of Transportation & Public Facilities

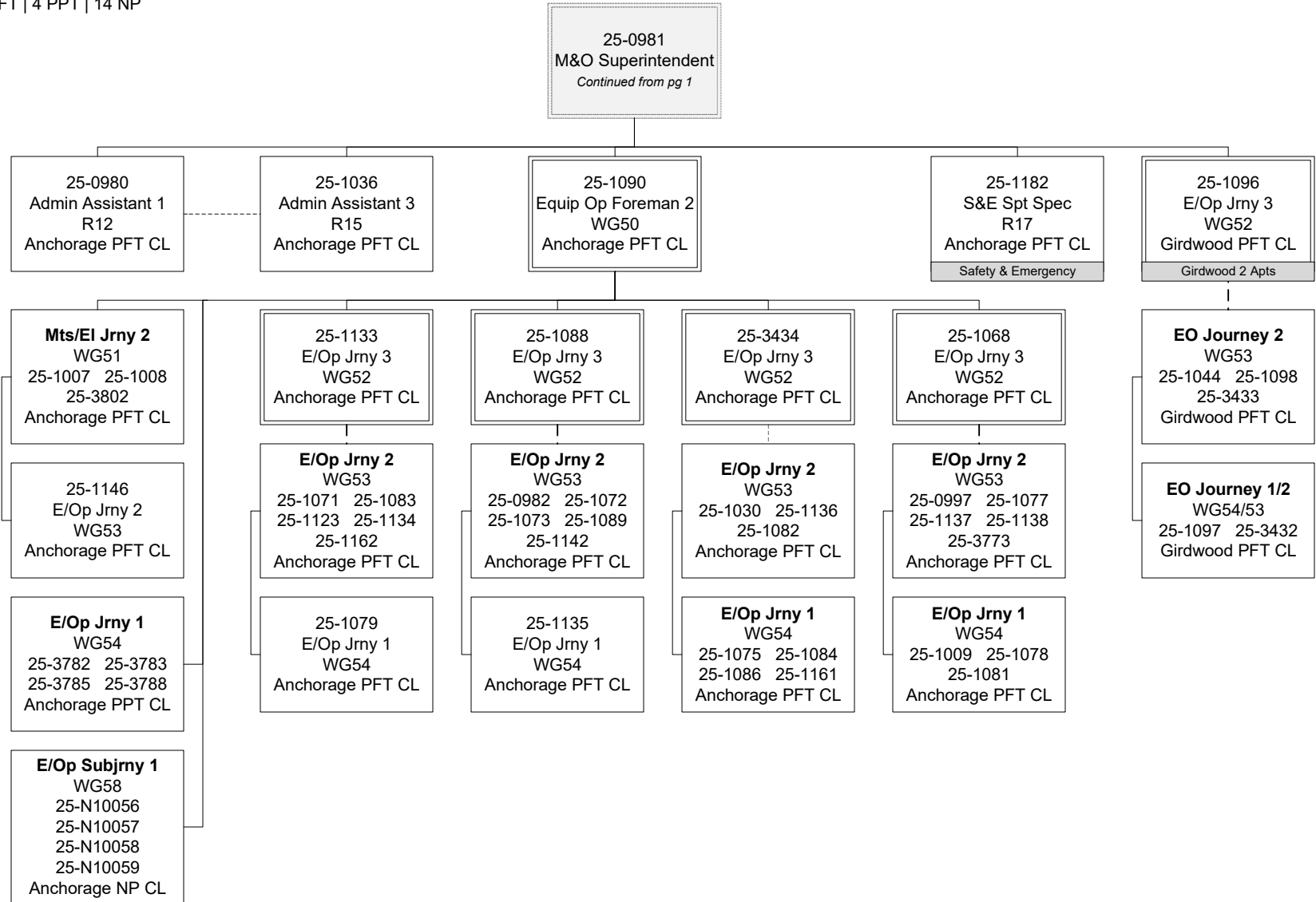
Central Region Highways and Aviation (564)

RDU: Highways, Aviation and Facilities (408)

FY2025 Governor's Budget

Position Totals: 167 PFT | 4 PPT | 14 NP

Anchorage District



Department of Transportation & Public Facilities

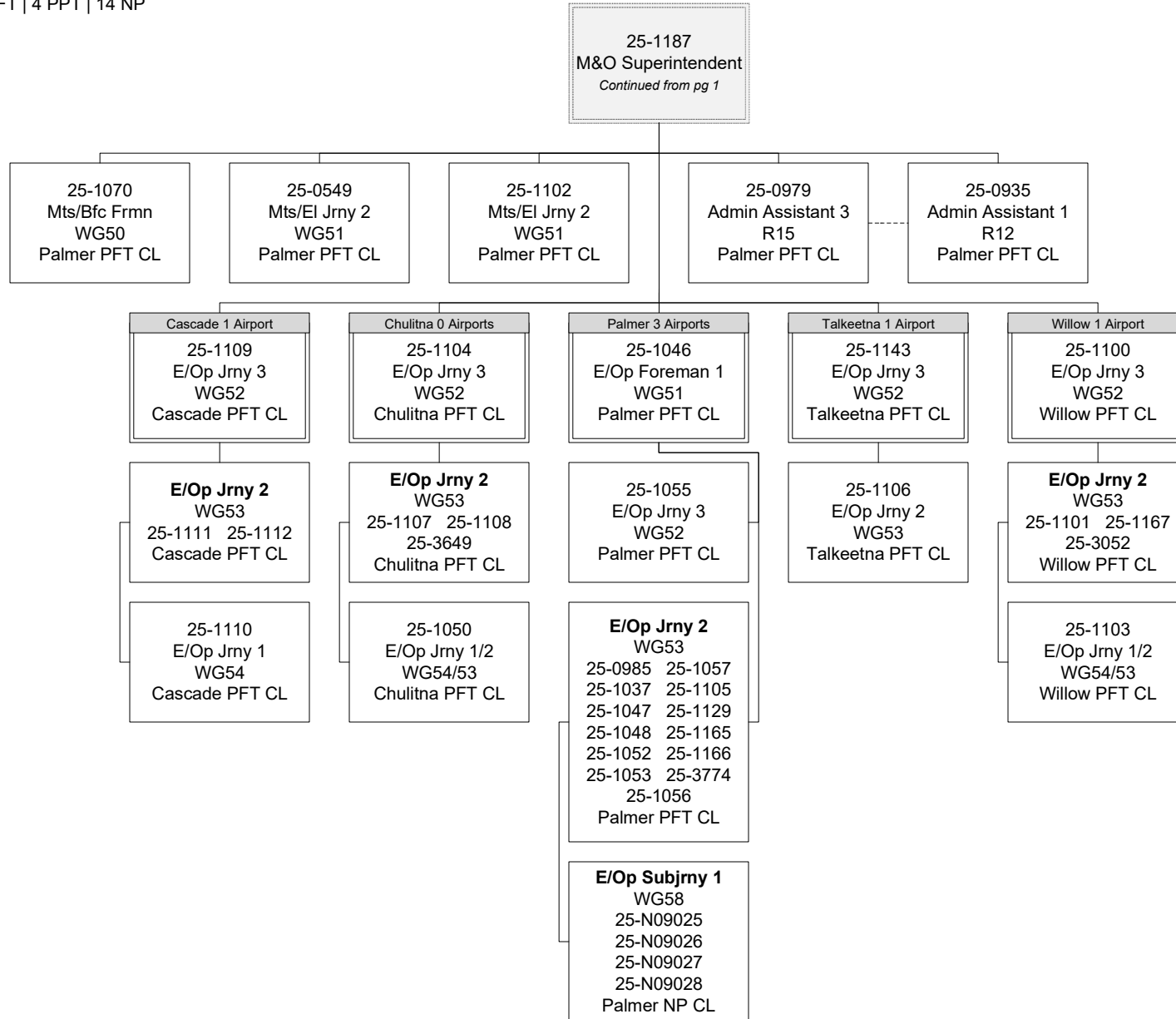
Central Region Highways and Aviation (564)

RDU: Highways, Aviation and Facilities (408)

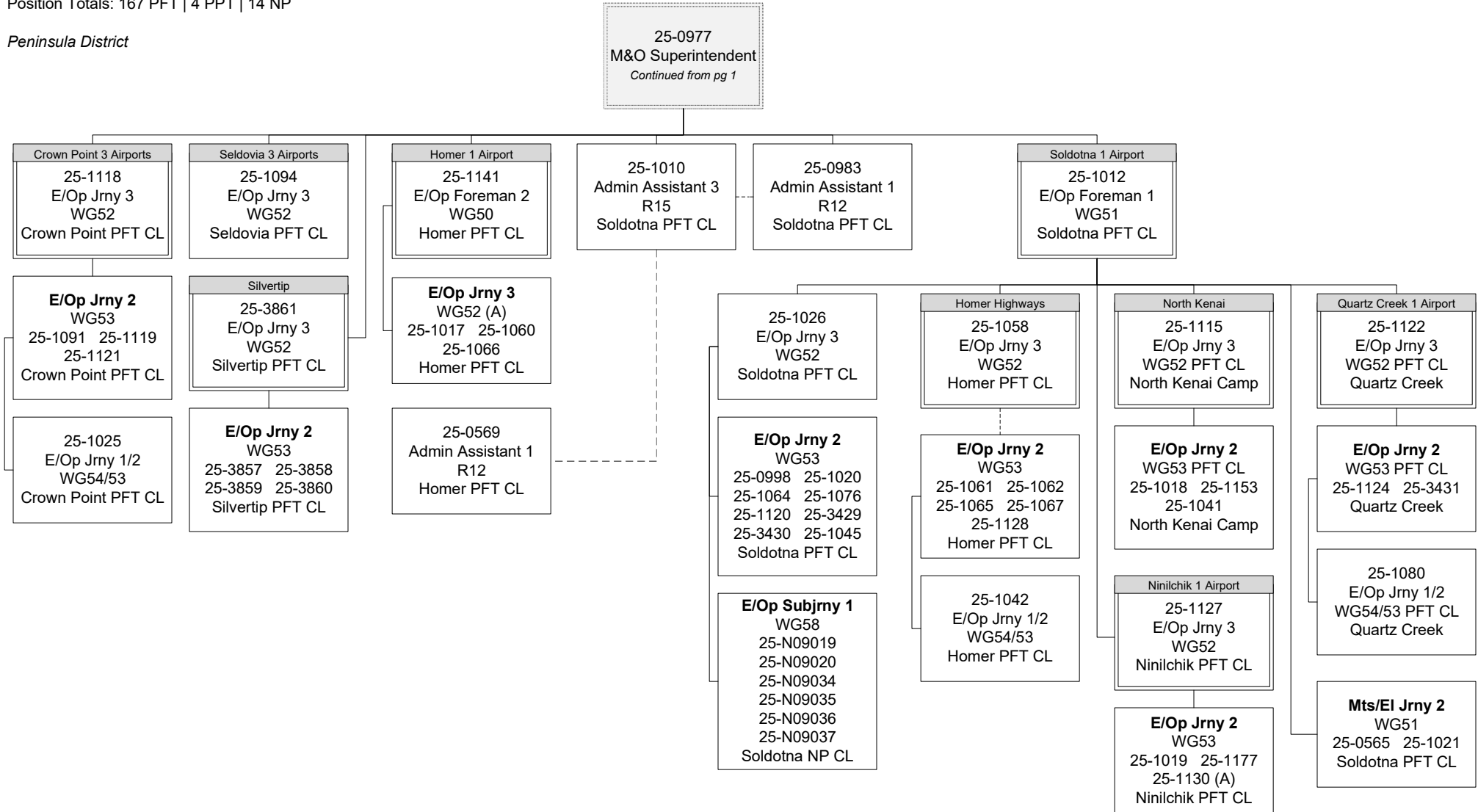
FY2025 Governor's Budget

Position Totals: 167 PFT | 4 PPT | 14 NP

Mat-Su District



Peninsula District



Department of Transportation & Public Facilities

Central Region Highways and Aviation (564)

RDU: Highways, Aviation and Facilities (408)

FY2025 Governor's Budget

Position Totals: 167 PFT | 4 PPT | 14 NP

Southwest District

