

Department of Transportation & Public Facilities

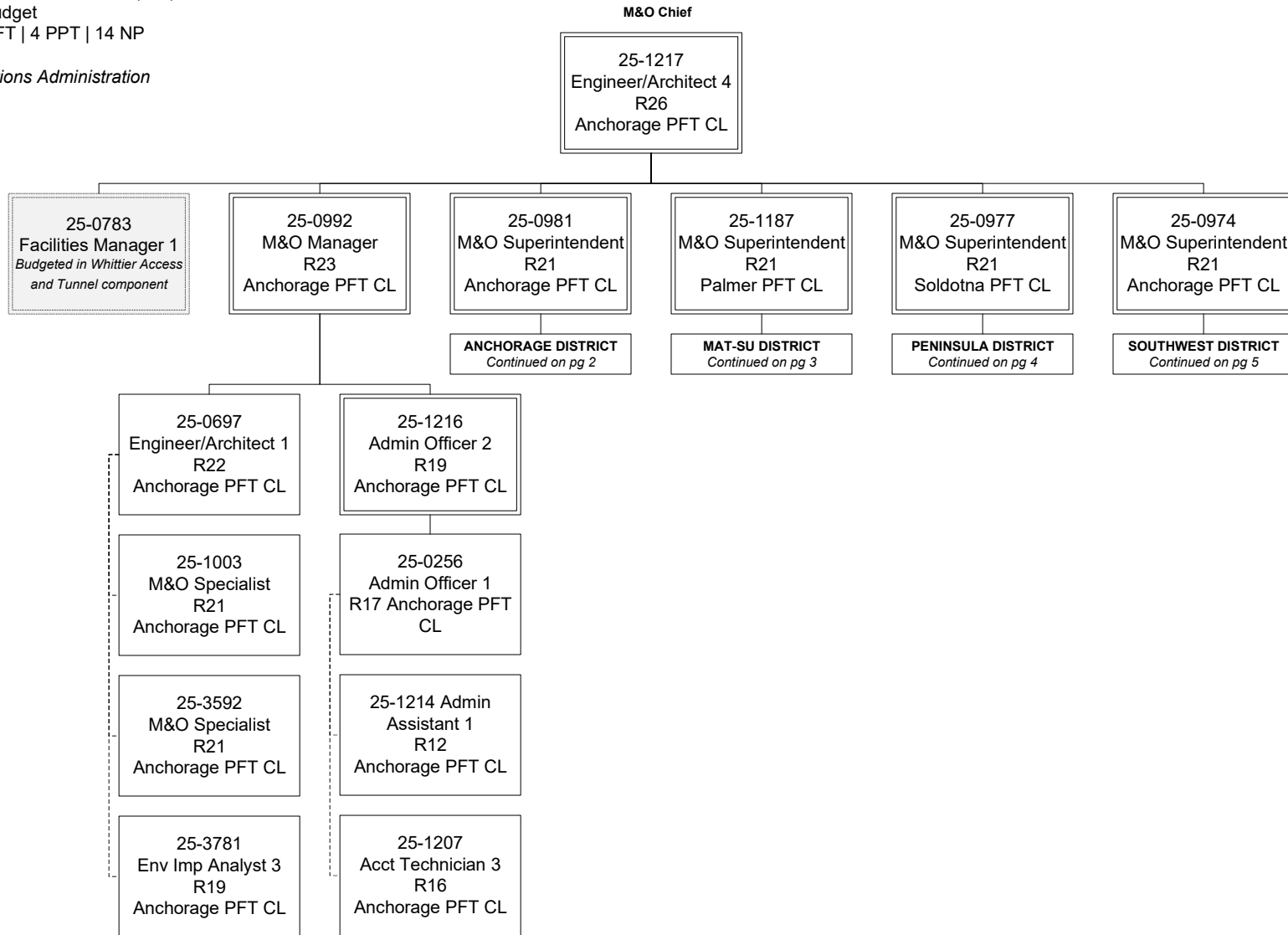
Central Region Highways and Aviation (564)

RDU: Highways, Aviation and Facilities (408)

FY2025 Governor's Budget

Position Totals: 167 PFT | 4 PPT | 14 NP

Maintenance & Operations Administration



Department of Transportation & Public Facilities

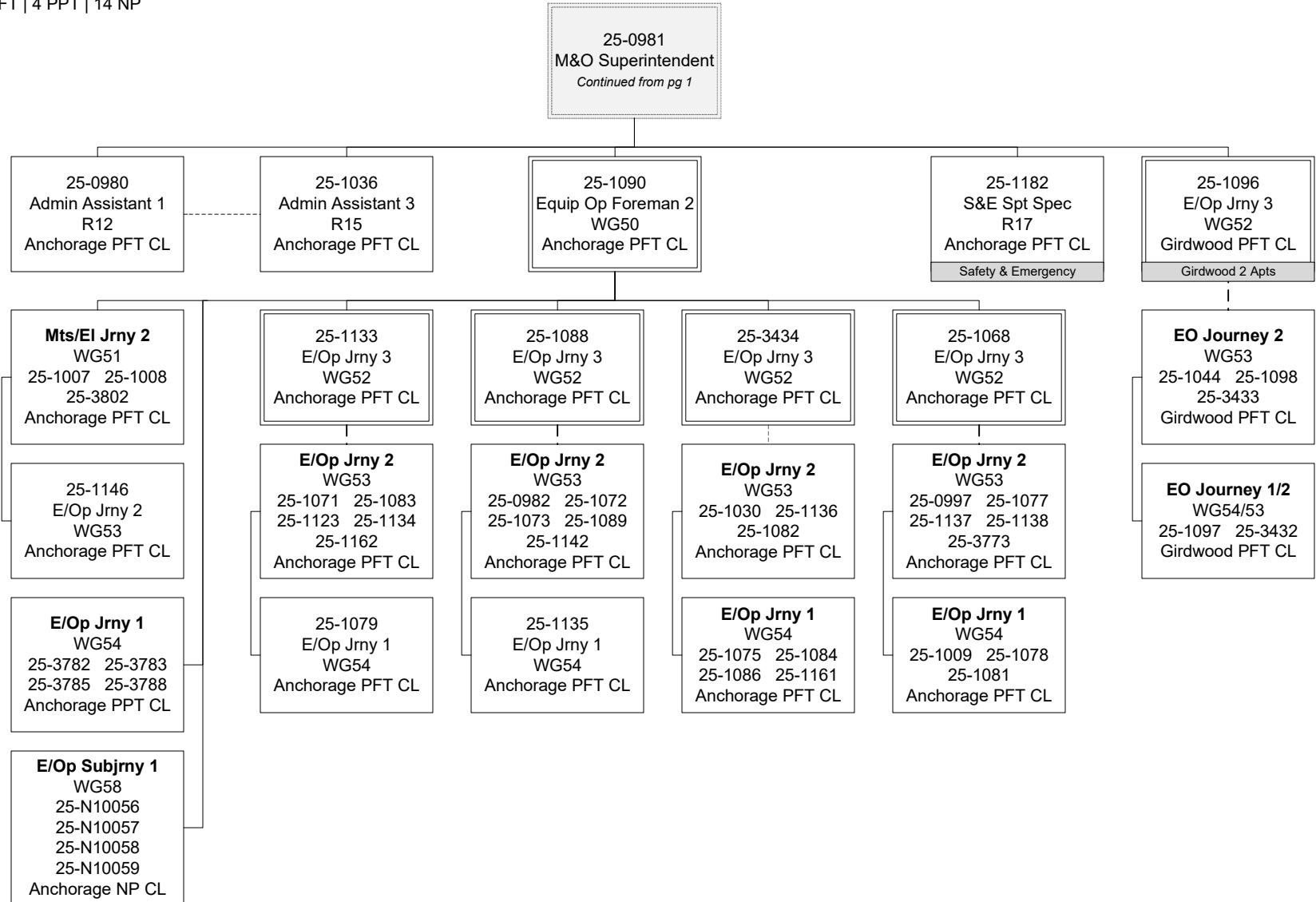
Central Region Highways and Aviation (564)

RDU: Highways, Aviation and Facilities (408)

FY2025 Governor's Budget

Position Totals: 167 PFT | 4 PPT | 14 NP

Anchorage District



Department of Transportation & Public Facilities

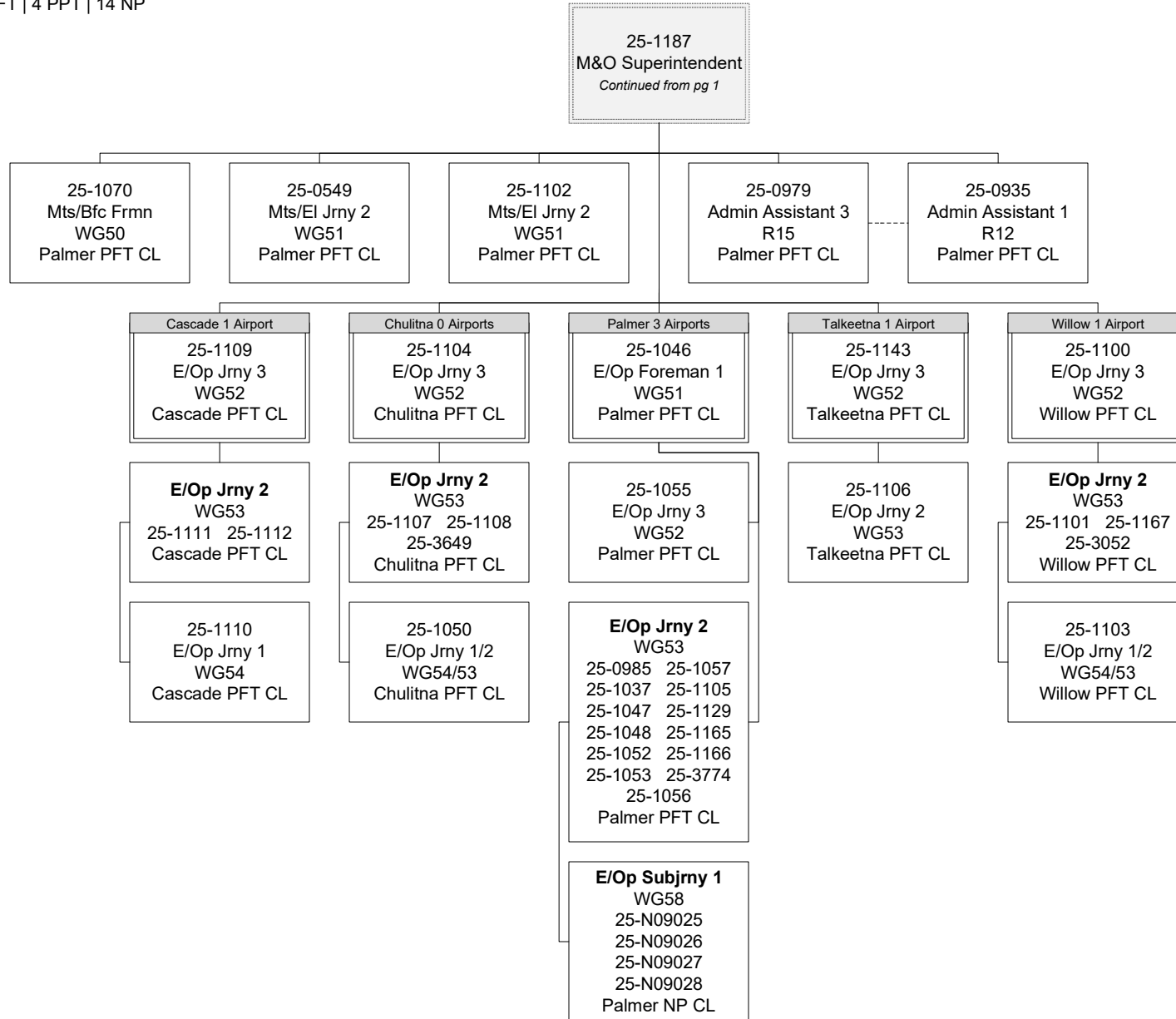
Central Region Highways and Aviation (564)

RDU: Highways, Aviation and Facilities (408)

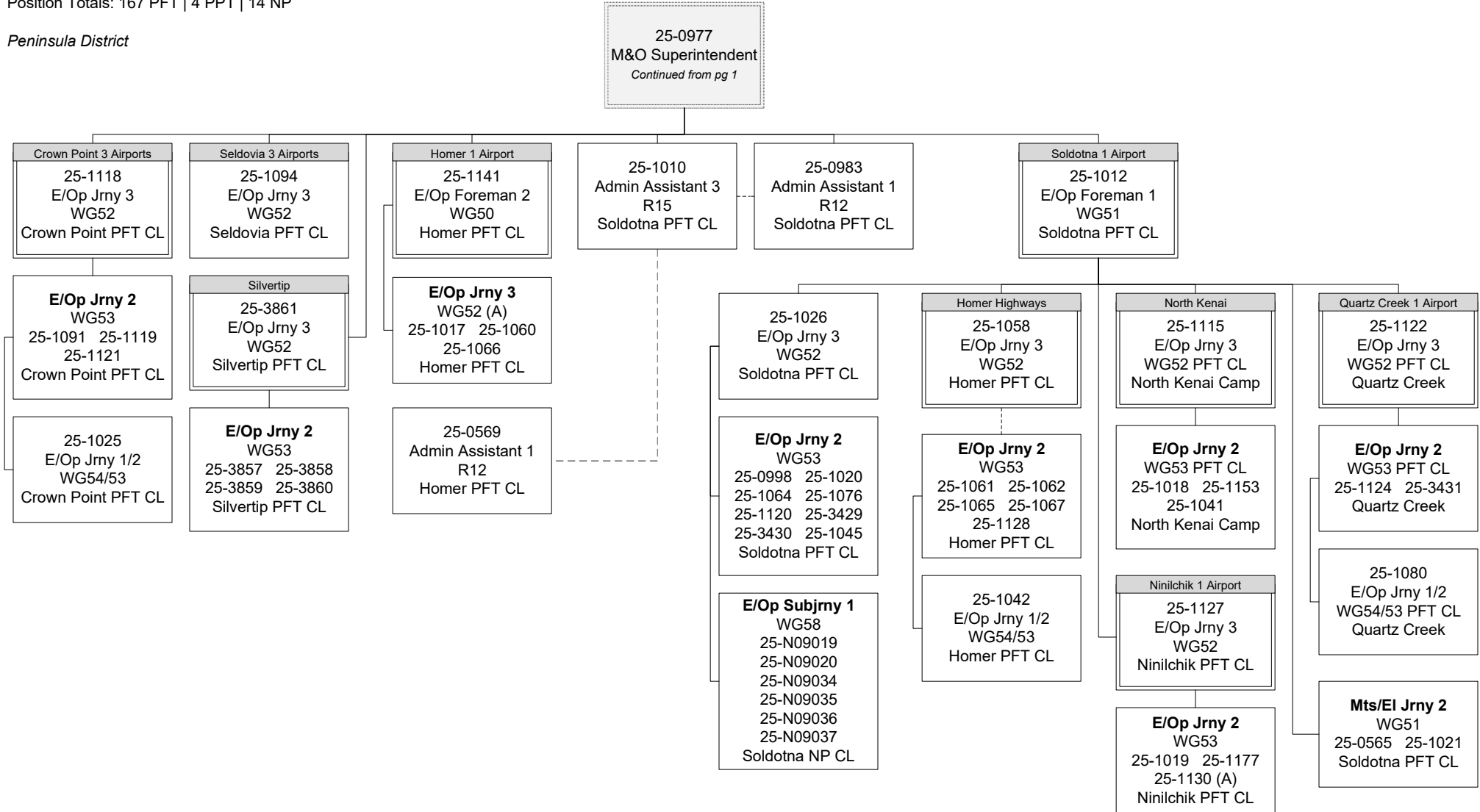
FY2025 Governor's Budget

Position Totals: 167 PFT | 4 PPT | 14 NP

Mat-Su District



Peninsula District



Department of Transportation & Public Facilities

Central Region Highways and Aviation (564)

RDU: Highways, Aviation and Facilities (408)

FY2025 Governor's Budget

Position Totals: 167 PFT | 4 PPT | 14 NP

Southwest District

