

State of Alaska FY2025 Governor's Operating Budget

Department of Transportation and Public Facilities Northern Region Highways and Aviation Component Budget Summary

Component: Northern Region Highways and Aviation

Contribution to Department's Mission

Efficiently operate, preserve, protect, manage, and control the state's highway, airport, and harbor systems.

Core Services

- Winter operation, preservation, and repair, including snow plowing and removal, sanding, de-icing, avalanche prevention and control, drift control, and culvert thawing to keep roads and airports open and safe for travel.
- Summer road, bridge, and airport maintenance including grading, pothole patching, crack sealing, leveling of heaves and dips, brush clearing, street sweeping, dust control, ditch and culvert cleaning, erosion control, bike path preservation, fence and guardrail repair, bridge maintenance, bridge repair, sign preservation, street light maintenance, and traffic signal repair.
- Preserve airport lighting systems including airport runway and taxiway lighting, beacons, segmented circles, and wind cones.
- Maintain federally mandated airport security, access control, badging, and fencing in accordance with Federal Aviation Administration (FAA) and the Department of Homeland Security Transportation Security Administration (TSA) requirements.
- Airport operation compliance, including inspection and assurance, to ensure state airports are operated in accordance with FAA operating regulations.
- Communicating winter road conditions.
- Emergency disaster response to damages on transportation infrastructure.
- Trash removal along roadsides and at rest areas, turnouts, and campgrounds within department-owned and managed facilities and rights-of-way.
- Control of encroachments on driveways, access roads, signs, utilities, and other state rights-of-way.
- Provide an active avalanche prevention program.

Major Component Accomplishments in 2023

- Collected \$1,615.0 in damage recovery for infrastructure repairs due to traffic accidents and bridge strikes. This amount includes a \$1,400 insurance payment for the Mitchell Expressway Bridge Strike in 2021.
- Operated, maintained, and repaired 376 bridges, 8,976 lane miles of roads, and 1,736 lane miles of aviation operation surfaces at 102 airports.
- Applied chip seal, high float surfacing, and/or hot mix asphalt paving to 145 lane miles throughout the region, returning 2,480 centerline miles of roadway to a significantly better service condition.
- Protected 1,110 centerline miles of roadway by crack sealing or crack banding.
- Applied gravel material and/or dust palliative to 176 lane miles of gravel roadway throughout the region, returning 670 miles of roads to a significantly better service condition.
- Reshaped and applied dust palliative to seven airport runways, taxiways, and aprons in Emmonak, Alakanuk, Nunam Iqua, Pilot Station, Russian Mission, Holy Cross, and Mountain Village.
- Designed and worked with a contractor to install a new segmented circle in Elim.
- Cut approximately 2,013 lane miles of brush and trees along highways, side roads, and bike paths and approximately 483 lane miles of brush and trees at airports.
- Performed maintenance on 24 bridges, which included emergency removal of a damaged and deteriorated pedestrian bridge over Geist Road and installation of a temporary bridge over Taylor Creek due to damaged support piles.
- Re-stripped 4,590 lane miles of roadways and repaired 1,957 linear feet of guardrail, fencing, and other barriers.
- Responded to and cleaned up 22 avalanches at Atigun Pass on the Dalton Highway, 16 of which blocked the road entirely; responded to three major avalanches in Thompson Pass; and Trimm's Camp on the Richardson Highway responded to five avalanches that hit the road, two of which blocked and temporarily closed the roadway.
- Developed and administered five aggregate crushing contracts at 15 sites, stockpiling over 92,000 cubic yards of material for both federal and state repair projects.

- Continue to partner with Chitina Dipnetters Association through the Department of Fish and Game to secure funds and improve access to the fishery. Including constructing new facilities at the existing rest area on the east side of the river.
- Continued closure of various injection wells around the region complying with a United States Environmental Protection Agency (EPA) consent decree. Additional scheduled closure in 2022 will complete the EPA closure deadline of December 2022.
- Significant spring runoff caused flooding issues regionwide requiring emergency response to address Richardson Highway Mile Post 330 and Mile Post 110 erosion, Moose Creek and Trooper Creek overtopping the Glenn Highway in Glenallen, roadway damages along the Taylor Highway and Mission Road in Eagle, Russian Mission Airport inundation, multiple washouts of Kougarak Road in Nome, Dalton Highway Bridge repair, Dalton Highway erosion protection and washout repair, Elliott Highway deep culvert replacement, O'Brien Creek flooding and bridge protection, and Fort Yukon drainage correction.
- Continued response to slides on the McCarthy roadway that blocked and closed the road at various locations and durations. Slides occurred along the length of the roadway including Mile Posts 0.5, 3, 17, 20, 50, and 58.
- Participated as co-permittee with the City of Fairbanks, the City of North Pole, and the University of Alaska in the Fairbanks Municipal Separate Storm Sewer System program. Submitted application to the Department of Environmental Conservation to renew the permit for another five years. The permittees are currently operating on a temporary extension until the renewal is finalized.
- Worked with the United States Air Force to facilitate the landing of a C-146A Wolfhound on the Parks Highway.
- Designed and administered the installation of a signing project to recognize Purple Heart medal recipients and extend the "Purple Heart Trail" down the Parks, Glenn, Seward, and Sterling Highways and provide signing for the Alaska Marine Highway System.

Key Component Challenges

- Recruitment and retention across the division continues to present considerable challenges with competitive wage rates and benefits, minimum qualification requirements, and personnel policies. Depending upon location vacancy rates are being seen in the order of 30-70 percent and are impacting the region's ability to respond to routine maintenance activities.
- Aging equipment fleet and deferred investment in replacement costs continue.
- Depleted aggregated material sites. Current regulatory requirements make the permitting of replacement sites expensive and time consuming, and land available for new sites is becoming harder to find and acquire.
- Significant number of emergency events and associated damage strained staff presence and impacted ability to perform scheduled maintenance.
- Substantial price increases in materials like fuel, paint, and calcium decreased the purchasing power of the department for regular operations.

Significant Changes in Results to be Delivered in FY2025

- No significant changes.

Statutory and Regulatory Authority

AS 02 Aeronautics
AS 19 Highways and Ferries
AS 30 Harbors and Shipping
AS 38 Motor Vehicles
AS 44 State Government
AAC 13 Public Safety
AAC 14 Public Works
AAC 17 DOT&PF
CFR 14 Aeronautics
CFR 49 Airport Security
CRF 23 Highways

Contact Information

Contact: Jason Sakalaskas, Northern Region Maintenance and Operations Chief
Phone: (907) 451-2214
E-mail: jason.sakalaskas@alaska.gov

Northern Region Highways and Aviation Personal Services Information				
Authorized Positions			Personal Services Costs	
	FY2024 Management Plan	FY2025 Governor		
Full-time	255	256	Annual Salaries	21,788,186
Part-time	51	51	COLA	151,442
Nonpermanent	20	20	Premium Pay	3,804,329
			Annual Benefits	16,464,611
			<i>Less 4.98% Vacancy Factor</i>	(2,103,368)
			Lump Sum Premium Pay	0
Totals	326	327	Total Personal Services	40,105,200

Position Classification Summary					
Job Class Title	Anchorage	Fairbanks	Juneau	Others	Total
Accounting Technician 1	0	1	0	0	1
Accounting Technician 2	0	1	0	0	1
Administrative Assistant 1	0	4	0	3	7
Administrative Assistant 2	0	1	0	0	1
Administrative Assistant 3	0	3	0	4	7
Administrative Officer 1	0	1	0	0	1
Administrative Officer 2	0	1	0	0	1
E/Op Jrny 3	0	1	0	50	51
E/Op Subjrny 1	0	7	0	13	20
E/Op Subjrny 2	0	9	0	7	16
Engineer/Architect 2	0	1	0	0	1
Engineer/Architect 3	0	1	0	0	1
Engineer/Architect 4	0	1	0	0	1
Engineering Assistant 2	0	2	0	0	2
Engineering Associate	0	1	0	0	1
Env Prgm Spec 3	0	1	0	0	1
Environmental Impact Analyst 3	0	2	0	0	2
Equipment Operator Foreman 1	0	6	0	10	16
Equipment Operator Foreman 2	0	1	0	3	4
Equipment Operator, Journey 1	0	13	0	9	22
Equipment Operator, Journey 2	0	30	0	112	142
Maint & OPS Mgr	0	1	0	0	1
Maint & OPS Spr	0	3	0	4	7
Mts/Bfc Frmn	0	1	0	0	1
Mts/EI Jrny 2	0	0	0	2	2
Mts/Tces Frmn	0	1	0	0	1
Mts/Tces Jrny 2	0	2	0	0	2
Office Assistant 3	0	0	0	3	3
Rural Airport Foreman	0	0	0	6	6
S&E Spt Spec	0	0	0	1	1
Safety Officer	0	1	0	0	1
Stock & Parts Services 3	0	1	0	2	3
Totals	0	98	0	229	327

Component Detail All Funds
Department of Transportation and Public Facilities

Component: Northern Region Highways and Aviation (2068)
RDU: Highways, Aviation and Facilities (408)

Non-Formula Component

	FY2023 Actuals	FY2024 Enrolled	FY2024 Authorized	FY2024 Management Plan	FY2025 Governor Adjusted Base	FY2025 Governor	FY2024 Management Plan vs FY2025 Governor		
1000 Personal Services	35,508.6	39,451.1	39,451.1	39,451.1	40,105.2	40,105.2	654.1	1.7%	
2000 Travel	752.8	1,304.2	1,304.2	1,287.3	1,287.3	1,287.3	0.0	0.0%	
3000 Services	25,243.2	24,314.4	24,314.4	24,331.3	22,186.3	22,711.3	-1,620.0	-6.7%	
4000 Commodities	10,063.7	10,031.6	10,031.6	10,031.6	9,492.5	11,299.1	1,267.5	12.6%	
5000 Capital Outlay	50.8	0.0	0.0	0.0	0.0	0.0	0.0	0.0%	
7000 Grants, Benefits	0.0	0.0	0.0	0.0	0.0	0.0	0.0	0.0%	
8000 Miscellaneous	0.0	0.0	0.0	0.0	0.0	0.0	0.0	0.0%	
Totals	71,619.1	75,101.3	75,101.3	75,101.3	73,071.3	75,402.9	301.6	0.4%	
Fund Sources:									
1002 Fed Rcpts (Fed)	0.0	129.0	129.0	129.0	129.1	129.1	0.1	0.1%	
1004 Gen Fund (UGF)	29,299.4	39,802.8	39,802.8	39,802.8	41,346.9	43,678.5	3,875.7	9.7%	
1005 GF/Prgm (DGF)	222.9	427.2	427.2	427.2	429.6	429.6	2.4	0.6%	
1007 I/A Rcpts (Other)	362.2	165.0	165.0	165.0	166.8	166.8	1.8	1.1%	
1027 Int Airprt (Other)	56.7	61.1	61.1	61.1	61.7	61.7	0.6	1.0%	
1061 CIP Rcpts (Other)	12,632.3	8,895.1	8,895.1	8,895.1	9,145.9	9,145.9	250.8	2.8%	
1108 Stat Desig (Other)	69.8	73.6	73.6	73.6	74.4	74.4	0.8	1.1%	
1200 VehRntlTax (DGF)	510.9	515.9	515.9	515.9	517.5	517.5	1.6	0.3%	
1239 AvFuel Tax (Other)	2,089.2	2,114.9	2,114.9	2,114.9	2,119.9	2,119.9	5.0	0.2%	
1244 Rural Air (Other)	1,009.5	1,207.8	1,207.8	1,207.8	1,212.2	1,212.2	4.4	0.4%	
1249 Motor Fuel (DGF)	17,473.6	17,764.6	17,764.6	17,764.6	17,867.3	17,867.3	102.7	0.6%	
1265 COVID Fed (Fed)	6,594.0	3,944.3	3,944.3	3,944.3	0.0	0.0	-3,944.3	-100.0%	
1270 FHWA CRRSA (Fed)	1,298.6	0.0	0.0	0.0	0.0	0.0	0.0	0.0%	
Unrestricted General (UGF)	29,299.4	39,802.8	39,802.8	39,802.8	41,346.9	43,678.5	3,875.7	9.7%	
Designated General (DGF)	18,207.4	18,707.7	18,707.7	18,707.7	18,814.4	18,814.4	106.7	0.6%	
Other Funds	16,219.7	12,517.5	12,517.5	12,517.5	12,780.9	12,780.9	263.4	2.1%	
Federal Funds	7,892.6	4,073.3	4,073.3	4,073.3	129.1	129.1	-3,944.2	-96.8%	
Positions:									
Permanent Full Time	255	255	255	255	256	256	1	0.4%	
Permanent Part Time	51	51	51	51	51	51	0	0.0%	
Non Permanent	20	20	20	20	20	20	0	0.0%	

Change Record Detail - Multiple Scenarios with Descriptions
Department of Transportation and Public Facilities

Component: Northern Region Highways and Aviation (2068)
RDU: Highways, Aviation and Facilities (408)

Scenario/Change Record Title	Trans Type	Totals	Personal Services	Travel	Services	Commodities	Capital Outlay	Grants, Benefits	Miscellaneous	Positions		NP
										PFT	PPT	
***** Changes From FY2024 Enrolled To FY2024 Authorized *****												
FY2024 Enrolled	Enrolled	75,101.3	39,451.1	1,304.2	24,314.4	10,031.6	0.0	0.0	0.0	255	51	20
1002 Fed Rcpts		129.0										
1004 Gen Fund		39,802.8										
1005 GF/Prgm		427.2										
1007 I/A Rcpts		165.0										
1027 Int Airprt		61.1										
1061 CIP Rcpts		8,895.1										
1108 Stat Desig		73.6										
1200 VehRntlTax		515.9										
1239 AvFuel Tax		2,114.9										
1244 Rural Air		1,207.8										
1249 Motor Fuel		17,764.6										
1265 COVID Fed		3,944.3										
Subtotal		75,101.3	39,451.1	1,304.2	24,314.4	10,031.6	0.0	0.0	0.0	255	51	20
***** Changes From FY2024 Authorized To FY2024 Management Plan *****												
Align Authority with Anticipated Expenditures	LIT	0.0	0.0	-16.9	16.9	0.0	0.0	0.0	0.0	0	0	0
Transfer authority from services to travel to align authority with anticipated expenditures. The remaining authority is sufficient to cover anticipated expenditures.												
Subtotal		75,101.3	39,451.1	1,287.3	24,331.3	10,031.6	0.0	0.0	0.0	255	51	20
***** Changes From FY2024 Management Plan To FY2025 Governor Adjusted Base *****												
Reverse FY2024 One-Time Funding: Central Maintenance Station Start-Up Costs for Opening at Full Capacity	OTI	-1,920.0	0.0	0.0	-1,895.0	-25.0	0.0	0.0	0.0	0	0	0
1004 Gen Fund		-1,920.0										
Reverse FY2024 one-time funding to provide start-up costs to open and operate the Central Maintenance Station at full capacity.												
Reverse FY2024 One-Time Fund Source Swap to Utilize Federal Relief Funding and Displace UGF	OTI	0.0	0.0	0.0	0.0	0.0	0.0	0.0	0.0	0	0	0
1004 Gen Fund		3,944.3										
1265 COVID Fed		-3,944.3										

Reverse the one-time fund source swap of general fund (UGF) to federal relief funding (American Rescue Plan & Coronavirus Response and Relief Supplemental Appropriation Act) to be used for purposes directly related to airports. Such purposes can include the reimbursement of an airport's operational expenses.

Change Record Detail - Multiple Scenarios with Descriptions
Department of Transportation and Public Facilities

Component: Northern Region Highways and Aviation (2068)
RDU: Highways, Aviation and Facilities (408)

Scenario/Change Record Title	Trans Type	Totals	Personal Services	Travel	Services	Commodities	Capital Outlay	Grants, Benefits	Miscellaneous	Positions		NP
										PFT	PPT	
Reverse FY2024 Murphy Dome Road Maintenance												
1004 Gen Fund	OTI	-50.0	0.0	0.0	-50.0	0.0	0.0	0.0	0.0	0	0	0
Reverse FY2024 one-time funding for Murphy Dome Road maintenance.												

Reverse FY2024 Ice Road Maintenance												
1004 Gen Fund	OTI	-200.0	0.0	0.0	-200.0	0.0	0.0	0.0	0.0	0	0	0
Reverse FY2024 one-time funding for Ice Road Maintenance.												

In 2016, the Birch Lake and Chitina maintenance stations were closed. These stations were later reopened with one-time increments, resulting in better service level conditions and improved safety. In FY2020, Northern Region met the statewide winter maintenance targets 54 percent of the time. The lowest success in meeting these targets was in the Tazlina (26 percent) and Fairbanks (37percent) districts where maintenance stations have been closed. These maintenance stations improve efficiency in winter maintenance service delivery by reducing travel time and improving responsive time to adverse weather events. This improves roadway safety conditions during the winter months, primarily on Priority 2 routes, and helps these districts meet statewide service delivery targets.

Keeping the stations open will:

1. Restore seven-days per week coverage with minimum staffing level.
2. Ensure two personnel are on shift guaranteeing continuous communication and assistance for safe job task performance or in the event of an emergency.
3. Improve road inspection frequency. Inspections identify issues such as slides, plugged culverts, safety issues, and many other roadway damages. Currently in these areas, many of these items are being identified by the public as they are traveling these station areas. Finding such items early improves safety and reduces infrastructure damages and repair costs.
4. Enhance emergency call-out response to support requests from Troopers/Emergency Services.
5. Improve crew morale.

Reverse FY2024 Commodities Increases												
1004 Gen Fund	OTI	-514.1	0.0	0.0	0.0	-514.1	0.0	0.0	0.0	0	0	0
Reverse FY2024 one-time funding for commodities increases.												

Since the pandemic, highway construction costs have increased 16.8 percent. The components of this index align closely with elements of highway maintenance & operations.

- 33% - Sodium Acetate-Formate (per ton): Bethel FY20 \$2,049.89 | FY21 \$2,249.83 | FY22 \$2,744.77
- 28% - Sodium Formate (per ton): AIA FY20 \$1,782.45 | FY21 \$1,957.00 | FY22 \$2,295.00
- 86% - Highway Sand (per ton): Statewide FY20 \$24.78 | FY21 \$37.90 | FY22 \$46.26
- 54% - Water Based Traffic Marking Paint (per gallon): Statewide FY20 \$20.01 | FY21 \$21.50 | FY22 \$31.01
- 42% - Blades (regular curved per edge): Statewide FY20 \$107.55 | FY21 \$106.53 | FY22 \$153.57

Change Record Detail - Multiple Scenarios with Descriptions
Department of Transportation and Public Facilities

Component: Northern Region Highways and Aviation (2068)
RDU: Highways, Aviation and Facilities (408)

Scenario/Change Record Title	Trans Type	Totals	Personal Services	Travel	Services	Commodities	Capital Outlay	Grants, Benefits	Miscellaneous	Positions		
										PFT	PPT	NP
FY2025 Salary, Health Insurance, and PERS Rate Adjustments												
	SalAdj	567.2	567.2	0.0	0.0	0.0	0.0	0.0	0.0	0	0	0
1002 Fed Rcpts		0.1										
1004 Gen Fund		243.9										
1005 GF/Prgm		2.4										
1007 I/A Rcpts		1.8										
1027 Int Airprt		0.6										
1061 CIP Rcpts		203.9										
1108 Stat Desig		0.8										
1200 VehRntlTax		1.6										
1239 AvFuel Tax		5.0										
1244 Rural Air		4.4										
1249 Motor Fuel		102.7										

FY2025 Salary, Health Insurance, and PERS Rate Adjustments: \$567.2

FY2025 AlaskaCare insurance from \$1,793 to \$1,908 per member per month: \$14.7
 FY2025 GGU health insurance from \$1,573.50 to \$1,579.50 per member per month: \$2.0
 FY2025 GGU 5% Cost of Living Adjustment: \$144.8
 FY2025 PERS Rate Adjustment from 25.10% to 26.76%: \$405.7

Transfer Administrative Assistant 1 (25-1679) from Northern Region Support Services for Administrative Support

	Trin	86.9	86.9	0.0	0.0	0.0	0.0	0.0	0.0	1	0	0
1004 Gen Fund		40.0										
1061 CIP Rcpts		46.9										

Transfer full-time Administrative Assistant 1 (25-1679), range 12, located in Fairbanks and related funding from Northern Region Support Services to Northern Region Highways and Aviation to provide administrative support.

Subtotal		73,071.3	40,105.2	1,287.3	22,186.3	9,492.5	0.0	0.0	0.0	256	51	20
-----------------	--	-----------------	-----------------	----------------	-----------------	----------------	------------	------------	------------	------------	-----------	-----------

***** **Changes From FY2025 Governor Adjusted Base To FY2025 Governor** *****

Airport Lighting Repairs

	Inc	525.0	0.0	0.0	525.0	0.0	0.0	0.0	0.0	0	0	0
1004 Gen Fund		525.0										

Many rural airports are the only form of transportation into and out of communities. These airports are the lifeline for daily services and emergency response. During conditions of poor weather or darkness, the airport lighting systems are vital to the operations of the airport. Non-operational lighting systems impact or delay flight services.

Additional funding will be utilized for a routine inspection program and to provide immediate response to any identified issues by facilitating timely airport lighting

Change Record Detail - Multiple Scenarios with Descriptions
Department of Transportation and Public Facilities

Component: Northern Region Highways and Aviation (2068)
RDU: Highways, Aviation and Facilities (408)

Scenario/Change Record Title	Trans Type	Totals	Personal Services	Travel	Services	Commodities	Capital Outlay	Grants, Benefits	Miscellaneous	Positions		NP
										PFT	PPT	
repairs, the availability of spare equipment on-site, and replacements for worn navigational aids. A programmatic process is intended to ensure these problems are found prior to failure and replaced, so system operations are not interrupted. Increased authority will also help fund rural airport maintenance contracts.												
Rising Commodities Costs for Maintenance and Operations Activities												
	Inc	1,806.6	0.0	0.0	0.0	1,806.6	0.0	0.0	0.0	0	0	0
1004 Gen Fund		1,806.6										
Due to rising commodity costs, additional funding is needed to meet current operations and critical year-round maintenance and operations activities. Highway construction costs index has increased 42.3 percent over the past two years. The components of this index align closely with elements of highway maintenance and operations. Any additional funding will positively impact the traveling public. Over the past few years service levels have been reduced due to rising costs.												
Totals		75,402.9	40,105.2	1,287.3	22,711.3	11,299.1	0.0	0.0	0.0	256	51	20

Line Item Detail (1676)
Department of Transportation and Public Facilities
Travel

Component: Northern Region Highways and Aviation (2068)

Line Number	Line Name		FY2023 Actuals	FY2024 Management Plan	FY2025 Governor
2000	Travel		752.8	1,287.3	1,287.3
Object Class	Servicing Agency	Explanation	FY2023 Actuals	FY2024 Management Plan	FY2025 Governor
2000 Travel Detail Totals			752.8	1,287.3	1,287.3
2000	In-State Employee Travel	Transportation and per diem for maintenance personnel to perform maintenance activities including roadway striping, bridge repair, and major roadway repairs at locations off the contiguous highway system. Travel for personnel to support rural airport runway lighting repairs, airfield maintenance equipment repairs, and inspection of contractor performance and compliance with plans, codes and regulations, such as Stormwater Pollution Prevention Plans. This travel is primarily by air and, in the case of rural airports, air taxi and charter services are necessary. This includes the Dalton Highway maintenance program requiring round trip travel every two weeks for employees at Deadhorse and Barrow and an aircraft charter contract for 11 employees at Chandalar. Per diem is paid for highway and airport crews traveling to outlying villages or working away from their assigned duty station. Includes special crews for traffic striping, asphalt patching, bridge repairs, washouts, or avalanche cleanup. Deadhorse Airport extended	733.0	1,276.3	1,276.3

Line Item Detail (1676)
Department of Transportation and Public Facilities
Travel

Component: Northern Region Highways and Aviation (2068)

Object Class	Servicing Agency	Explanation	FY2023 Actuals	FY2024 Management Plan	FY2025 Governor
2000 Travel Detail Totals			752.8	1,287.3	1,287.3
		operations increment; \$90.0 GF, \$90.0 GF/PR			
		Travel and per diem for the director and other administrative staff members for highway, airport and facility inspections, and administration and management of the agency. This includes funding for indirect travel costs in support of capital projects (ICAP).			
		Travel for training sessions on airport safety and security, airport rescue and firefighting (ARFF), avalanche control and administration of Federal Highway Administration, and Federal Aviation Administration projects. This includes funding for training costs in support of capital projects (ICAP).			
2001	In-State Non-Employee Travel	In-state non-employee travel.	8.7	0.0	0.0
2002	Out of State Employee Travel	Travel to out of state meetings for the director, maintenance engineer, regional maintenance manager and other managers where training or sessions are not held in Alaska.	11.1	9.0	9.0
2005	Moving Costs	Moving costs for newly hired or transferred employees.	0.0	2.0	2.0

Line Item Detail (1676)
Department of Transportation and Public Facilities
Services

Component: Northern Region Highways and Aviation (2068)

Line Number	Line Name		FY2023 Actuals	FY2024 Management Plan	FY2025 Governor
3000	Services		25,243.2	24,331.3	22,711.3
Object Class	Servicing Agency	Explanation	FY2023 Actuals	FY2024 Management Plan	FY2025 Governor
3000 Services Detail Totals			25,243.2	24,331.3	22,711.3
3000	Education Services	Registration and tuition fees for training in maintenance management, hazardous waste management, snow and ice control, bridge rehabilitation, and other specialized maintenance services.	89.5	57.0	57.0
3001	Financial Services	Insurance costs for rural airport maintenance contracts.	0.0	118.4	118.4
3001	Financial Services	Uncleared Pcard charges Uncleared Pcard charges	7.0	0.0	0.0
3003	Information Technology	Software licensing and software maintenance.	25.7	25.0	18.3
3004	Telecommunications	Long distance, local phone service, cellular service and satellite phones provided by vendors.	922.9	855.0	764.5
3005	Health Services	Drug and alcohol testing for employees with commercial driver's licenses.	87.8	35.0	35.0
3006	Delivery Services	United States Postal Service, courier costs, and freight charges for all parts, supplies, and other necessary items for district locations to perform maintenance and operations duties.	297.7	102.5	102.5
3007	Advertising and Promotions	Public notices for weight restrictions, studded tires, and road closures.	2.4	2.5	2.5
3008	Utilities	Electrical energy for street lights, signal systems, pre-heating of airport	1,357.6	1,179.6	1,379.6

Line Item Detail (1676)
Department of Transportation and Public Facilities
Services

Component: Northern Region Highways and Aviation (2068)

Object Class	Servicing Agency	Explanation	FY2023 Actuals	FY2024 Management Plan	FY2025 Governor
3000 Services Detail Totals			25,243.2	24,331.3	22,711.3
		maintenance equipment to allow starting during extreme cold, railroad crossing signals and airfield lighting systems.			
3008	Utilities	Water for street sweepers.	10.3	9.7	9.7
3008	Utilities	Garbage dump costs for litter and trash cleanup of roads, waysides, and facilities.	219.6	100.0	88.4
3008	Utilities	Propane.	18.9	10.0	3.0
3009	Structure/Infrastructure/Land	Inspections/Testing-Sample testing of crushed material and soil.	8.9	15.0	15.0
3009	Structure/Infrastructure/Land	Contracts for maintenance and upgrades for electrical, guardrail, bike paths, brush cutting, waysides/pullouts, Alaska Railroad crossings, striping; gravel crushing, and supplemental snow removal or grading, including services contracted with the private sector and maintenance agreements with local governments. Snow removal contracts at rural airports.	3,654.7	4,169.3	5,155.0
		FY19 Close 11 Non-Obligated Rural Airports \$-114.6			
3009	Structure/Infrastructure/Land	Rental for land, buildings and space: lease fees for Bureau of Land Management or Native corporation property at small airports, railroad crossings and other small land leases. Room rental for hazardous materials and safety training.	27.9	210.0	10.0
3010	Equipment/Machinery	Repairs and maintenance of machinery and equipment other than	95.2	200.0	200.0

Line Item Detail (1676)
Department of Transportation and Public Facilities
Services

Component: Northern Region Highways and Aviation (2068)

Object Class	Servicing Agency	Explanation	FY2023 Actuals	FY2024 Management Plan	FY2025 Governor
3000 Services Detail Totals			25,243.2	24,331.3	22,711.3
		that paid to State Equipment Fleet such as backhoes, bridge repair equipment, survey and gravel screening equipment, generators, welders, drill presses, pumps, chain saws, and chain hoists. Includes rental of copiers and office machines.			
3010	Equipment/Machinery	Rental or leases for specialized tools, machinery and equipment not available from State Equipment Fleet such as backhoes, bridge repair equipment, survey and gravel screening equipment. Rental of extra equipment such as snow blowers, loaders and graders during emergencies or heavy storms.	216.1	410.0	410.0
3011	Other Services	Agreement with City of Fairbanks for National Pollutant Discharge Elimination System (NPDES) permit for Municipal Separate Storm Sewer System (MS4) technical support including surveying, plan development, mapping, etc. Also miscellaneous consultants for this program. Specification and safety manual printing; photo processing, environmental assessments and cleanup.	187.6	60.0	60.0
3011	Other Services	Contracted services to have law enforcement officers (LEO) stationed at rural airports during screening operations.	41.3	60.0	60.0
3012	Inter-Agency Federal Indirect Rate Allocation	Interagency federal indirect rate allocation.	86.2	63.0	0.0

Line Item Detail (1676)
Department of Transportation and Public Facilities
Services

Component: Northern Region Highways and Aviation (2068)

Object Class		Servicing Agency	Explanation	FY2023 Actuals	FY2024 Management Plan	FY2025 Governor
3000 Services Detail Totals				25,243.2	24,331.3	22,711.3
3015	Inter-Agency Conservation/Environmental	FishGm - Department-wide	Reimbursable Services Agreement with the Department of Fish and Game for project review.	0.4	0.0	0.0
3015	Inter-Agency Conservation/Environmental	NatRes - Department-wide	Annual water usage permits paid to Department of Natural Resources.	11.3	5.2	5.2
3015	Inter-Agency Conservation/Environmental	Trans - Northern Design & Eng Svcs (2299)	Technical services including right of way, materials and design services.	0.0	60.0	60.0
3015	Inter-Agency Conservation/Environmental	EnvCon - Department-wide	Stormwater permit fees paid to Department of Environmental Conservation.	5.2	4.0	4.0
3015	Inter-Agency Conservation/Environmental	NatRes - Department-wide	Reimbursable services agreement with Department of Natural Resources for maintenance of the Birch Lake Wayside.	9.7	8.3	8.3
3017	Inter-Agency Information Technology Non-Telecommunications	Admin - Department-wide	Computer services provided by Department of Administration such as central server, data storage, printing, network services, open connect and task order system.	505.5	500.0	471.1
3018	Inter-Agency Information Technology Telecommunications	Admin - Department-wide	Telecommunications services provided by the Department of Administration such as basic telephone services, equipment and features, dedicated voice/data line service, statewide paging, two-way radio, and video conferencing.	71.3	70.0	38.1
3020	Inter-Agency Building Maintenance	Trans - Northern Region Facilities (2069)	Reimbursable services agreements with Northern Region Facilities where Highways and Aviation employees are either not available or need expertise in electrical or other facilities.	0.0	26.2	26.2
3021	Inter-Agency Mail	Admin - Department-wide	Centralized mail services chargeback	1.3	1.5	1.5

Line Item Detail (1676)
Department of Transportation and Public Facilities
Services

Component: Northern Region Highways and Aviation (2068)

Object Class		Servicing Agency	Explanation	FY2023 Actuals	FY2024 Management Plan	FY2025 Governor
3000 Services Detail Totals				25,243.2	24,331.3	22,711.3
3022	Inter-Agency Human Resources	Admin - Department-wide	Chargeback fees for human resource services such as labor relations, position classifications and payroll processing.	268.3	260.0	255.4
3024	Inter-Agency Legal	Law - Department-wide	Legal services provided by the Department of Law with added litigations in settling disputes with private and corporate landowners/lessees where gravel stockpiles are in contention and with land ownership issues with native allotments.	0.4	15.0	15.0
3026	Inter-Agency Insurance	Admin - Department-wide	Liability insurance for rural airport facilities.	0.0	40.0	40.0
3027	Inter-Agency Financial	Admin - Department-wide	Chargeback fees for AKPAY/IRIS/ALDER.	191.0	190.0	100.0
3028	Inter-Agency Americans with Disabilities Act Compliance	Admin - Department-wide	Americans with Disabilities Act (ADA) Chargeback	5.8	5.3	0.7
3029	Inter-Agency Education/Training	Admin - Department-wide	Procurement training hosted by the Department of Administration.	0.8	1.0	0.0
3029	Inter-Agency Education/Training	Trans - Statewide Aviation (1811)	Training hosted by Statewide Aviation for Northern Region airport managers and operators to increase safety and efficient and effective methods of operating rural and community airports.	4.6	5.0	0.0
3031	Inter-Agency Construction		Installation of Kiosk Signs on the Purple Heart Trail. Installation of Kiosk Signs on the Purple Heart Trail.	223.2	0.0	0.0
3035	Inter-Agency Other Equipment/Machinery	Trans - State Equipment Fleet (2791)	State Equipment Fleet employees working as equipment operators.	0.0	144.1	144.1
3037	State Equipment Fleet		State Equipment Fleet costs to	-24.2	0.0	-90.0

Line Item Detail (1676)
Department of Transportation and Public Facilities
Services

Component: Northern Region Highways and Aviation (2068)

Object Class	Servicing Agency	Explanation	FY2023 Actuals	FY2024 Management Plan	FY2025 Governor
3000 Services Detail Totals			25,243.2	24,331.3	22,711.3
		include fuel services, asset maintenance and repair, accident damage, and equipment replacement allowable under circular A87.			
3037	State Equipment Fleet	Trans - State Equipment Fleet (2791) Operating and replacement fees paid to State Equipment Fleet (SEF) for over 1,300 vehicles/equipment. Includes credit/reduction for usage on federal projects. Also includes repair costs of X class vehicles. FY16 Deadhorse Airport extended operations increment; \$16.1 GF, \$16.2 GF/PR FY16 reduction to remove funding for Hwy & A/P Surface Maintenance \$-350.0; FY16 reduction to reduce fleet \$-566.7; FY16 Service level reductions \$-1,277.1; FY16 Cost Control & Efficiency Measures \$-340.0 FY17 Service Level Reduction \$-944.1 FY17 GF Program Receipts to Mitigate GF Reduction in FY16 \$-235.9	20,931.6	19,472.0	17,235.0
3037	State Equipment Fleet	Trans - State Equipment Fleet (2791) SEF Fuel A87 Allowed Credit card vehicle fuel purchases through State Equipment Fleet. Funding based on 20,733 gallons @ \$4.86 = \$100.7. Deadhorse Airport extended operations increment; \$16.6 GF, \$16.6 GF/PR FY2016 Cost Control & Efficiency Measures \$-23.0.	108.5	110.9	110.9
3038	Inter-Agency	Trans - Northern Design, Eng & Const Reimbursable Services Agreement	41.1	41.0	34.0

Line Item Detail (1676)
Department of Transportation and Public Facilities
Services

Component: Northern Region Highways and Aviation (2068)

Object Class	Servicing Agency	Explanation	FY2023 Actuals	FY2024 Management Plan	FY2025 Governor
3000 Services Detail Totals			25,243.2	24,331.3	22,711.3
Management/Consulting	(3375)	with Northern Region Design, Engineering, and Construction to support Highways and Aviation with snow plowing.			
3039	DOT/PF Time & Equipment System	Vehicle usage billed to the operating budget based on established rates and actual usage of vehicles.	-4,469.9	-4,310.2	-4,237.1

Line Item Detail (1676)
Department of Transportation and Public Facilities
Commodities

Component: Northern Region Highways and Aviation (2068)

Line Number	Line Name		FY2023 Actuals	FY2024 Management Plan	FY2025 Governor
4000	Commodities		10,063.7	10,031.6	11,299.1
Object Class	Servicing Agency	Explanation	FY2023 Actuals	FY2024 Management Plan	FY2025 Governor
4000 Commodities Detail Totals			10,063.7	10,031.6	11,299.1
4000	Business	General office supplies, office furniture, subscriptions, computers and other information technology equipment.	195.0	132.2	132.2
4002	Household/Institutional	Protective clothing and supplies such as gloves, hip boots, hard hats, safety vests and shoes, safety glasses and coveralls. Also includes absorbent towels, solvent, cleaners, floor sweep, barrels for used oil and hazardous waste storage, trash cans and other janitorial and cleaning supplies.	25.4	15.0	15.0
4003	Scientific and Medical	Materials Lab equipment.	9.6	0.0	0.0
4004	Safety	Firearms and ammunition used in avalanche and bird control. Fire suppressant chemicals for airport firefighting and rescue vehicles. Other safety and first aid supplies.	139.3	200.0	200.0
4005	Building Materials	Lumber, structural repairs, and fencing materials.	3.2	40.0	40.0
4006	Signs and Markers	Signs and markers along roadways and airports.	198.2	200.0	200.0
4007	Asphalt	FY17 Reduce commodities \$-400.0 Asphalt, cold mix, and hot mix for pavement repairs.	172.6	300.0	300.0

Line Item Detail (1676)
Department of Transportation and Public Facilities
Commodities

Component: Northern Region Highways and Aviation (2068)

Object Class	Servicing Agency	Explanation	FY2023 Actuals	FY2024 Management Plan	FY2025 Governor
4000 Commodities Detail Totals			10,063.7	10,031.6	11,299.1
		FY2016 reduction (\$200.0)			
4008	Aggregate	Aggregate compounds such as gravel or slag used to form concrete or pavement.	473.1	200.0	350.0
		FY16 reduction \$-257.7; FY16 Service level reduction & efficiencies \$-253.3			
4009	Guardrails	Guardrail, posts, and bridge planks.	96.0	100.0	100.0
		FY16 Services level reduction & efficiencies \$-450.0 FY17 Service level reduction \$-75.0			
4010	Culverts	Culverts.	19.0	44.3	44.3
		FY16 Service Level reduction & efficiencies \$-56.0 FY17 Reduce Commodities \$-100.0			
4011	Electrical	Electrical parts for repairing signals.	252.1	175.0	225.0
4012	Plumbing	Parts and supplies for plumbing repairs.	0.7	25.9	25.9
4013	Lube Oils/Grease/Solvents	Lube oil, grease and fuel additives.	91.8	19.3	69.3
4014	Bottled Gas	Bottled gas.	36.1	27.4	32.4
4015	Parts and Supplies	Parts and supplies for leased or other equipment not serviced by State Equipment Fleet.	907.9	931.1	931.1
4015	Parts and Supplies	Blades, cutting edges, chains and cross-links. FY16 reduction \$-195.0 FY2016 unallocated reduction \$-70.0 FY17 Service level reduction \$-25.0	0.0	962.5	826.5
4016	Paint/Preservatives	Traffic paint, beads and solvent for striping highways, airports and	315.8	167.6	317.6

Line Item Detail (1676)
Department of Transportation and Public Facilities
Commodities

Component: Northern Region Highways and Aviation (2068)

Object Class	Servicing Agency	Explanation	FY2023 Actuals	FY2024 Management Plan	FY2025 Governor
4000 Commodities Detail Totals			10,063.7	10,031.6	11,299.1
		crosswalks.			
		FY2016 reduction (\$400.0) FY17 reduction \$-233.6			
4017	Sand	Sand used with chemicals for ice control on roadway surfaces.	36.1	235.7	235.7
4018	Surface Chemicals	Winter chemicals for highways and airport ice control. Summer chemicals for dust control on airports and highways.	1,477.2	903.1	1,551.6
4019	Small Tools/Minor Equipment	Small tools and minor equipment such as air wrenches and water pumps.	97.4	152.5	152.5
4020	Equipment Fuel	Diesel fuel and unleaded gasoline purchased in bulk for equipment and vehicle usage. Funding based on 1,476,553 gallons @ \$2.82. See object class 3037 for fuel purchased by credit card.	5,517.2	5,200.0	5,550.0
		FY16 Amendment; transfer \$-374.1 Southcoast Region, FY16 Service level reduction & efficiencies \$-100.0, FY16 Cost control and efficiency measures \$-42.0			
		FY17 Service level reduction \$-26.2			

Line Item Detail (1676)
Department of Transportation and Public Facilities
Capital Outlay

Component: Northern Region Highways and Aviation (2068)

Line Number	Line Name		FY2023 Actuals	FY2024 Management Plan	FY2025 Governor
5000	Capital Outlay		50.8	0.0	0.0
Object Class	Servicing Agency	Explanation	FY2023 Actuals	FY2024 Management Plan	FY2025 Governor
5000 Capital Outlay Detail Totals			50.8	0.0	0.0
5002	Structures and Infrastructure	Contractor services for performing maintenance and operations services.	34.5	0.0	0.0
5004	Equipment	Equipment purchases	16.3	0.0	0.0

Revenue Detail (1681)
Department of Transportation and Public Facilities

Component: Northern Region Highways and Aviation (2068)

Revenue Type (OMB Fund Code) Revenue Source	Component	Comment	FY2023 Actuals	FY2024 Management Plan	FY2025 Governor
5002 Fed Rcpts (1002 Fed Rcpts)			0.0	129.0	129.1
5017 Federal Transportation - Miscellaneous Grants		Reimbursement for requests from the Federal Aviation Administration, Bureau of Land Management and other federal agencies for snow removal at their sites on Northern Region airports and campgrounds on federal land and special emergency requests from federal agencies, i.e. U.S. Air Force.	0.0	129.0	129.1
5005 GF/Prgm (1005 GF/Prgm)			222.9	427.2	429.6
5111 Program Receipts Transportation - Charges for Services		Receipts collected for repair activities on non-state signal controllers, traffic striping on city streets, travelers assistance on remote roadways, sale of scrap metal, etc. Reimbursement is based on actual cost of service. See AS 37.05.146(a) for the definition of general fund program receipts.	222.9	427.2	429.6
5007 I/A Rcpts (1007 I/A Rcpts)			362.2	165.0	166.8
5301 Inter-Agency Receipts		Reimbursement from any state agency's operating budget for services provided. Typical requests are for professional construction management. Specific agreements and departments served vary from year to year.	283.9	62.0	63.8
5301 Inter-Agency Receipts	M&VA - Department-wide	Reimbursable service agreement to provide snow plowing at Office of Information Technology Communication sites.	2.5	10.0	10.0
5301 Inter-Agency Receipts	FishGm - Department-wide	Reimbursable service agreement for maintenance in the Chitina area.	75.8	83.0	83.0

Revenue Detail (1681)
Department of Transportation and Public Facilities

Component: Northern Region Highways and Aviation (2068)

Revenue Type (OMB Fund Code) Revenue Source	Component	Comment	FY2023 Actuals	FY2024 Management Plan	FY2025 Governor
5301 Inter-Agency Receipts	Trans - Facilities Services (3195)	Reimbursable services agreement for Highways and Aviation staff to provide assistance in building maintenance duties when Northern Region facilities does not have adequate staff available, including electrical and other maintenance work at the Deadhorse Combined facility.	0.0	10.0	10.0
5061 CIP Rcpts (1061 CIP Rcpts)			12,632.3	8,895.1	9,145.9
5351 Capital Improvement Project Inter-Agency		Capital improvement project receipts for work in direct support of capital projects.	10,027.4	7,131.7	7,343.5
5351 Capital Improvement Project Inter-Agency		Recovery of indirect costs from the capital budget via the department's Indirect Cost Allocation Plan (ICAP).	2,604.9	1,763.4	1,802.4
5108 Stat Desig (1108 Stat Desig)			78.8	73.6	74.4
5206 Statutory Designated Program Receipts - Contracts		Reimbursement from non-state and non-federal entities under contractual agreements requesting Department of Transportation and Public Facilities to provide maintenance services. Reimbursement is based on actual costs.	78.8	73.6	74.4
5244 AirptLease (1244 Rural Air)			1,009.5	1,207.8	1,212.2
5244 Rural Airport Lease Receipts		Revenue distributed from the department's rural airport leasing program operated by the Statewide Aviation component under various sections of the Alaska Aeronautic Act including AS 02.15.090 and Title 17 of the Alaska Administrative	811.7	969.4	973.8

Revenue Detail (1681)
Department of Transportation and Public Facilities

Component: Northern Region Highways and Aviation (2068)

Revenue Type (OMB Fund Code) Revenue Source	Component	Comment	FY2023 Actuals	FY2024 Management Plan	FY2025 Governor
		Code. AS 37.05.146(c)(68) defines charges, rentals, and fees for airport or air navigation facility contracts, leases and other arrangements as non-general fund program receipts.			
5244 Rural Airport Lease Receipts		Revenue collected from air carriers for airport after hour call outs.	3.5	100.0	100.0
5244 Rural Airport Lease Receipts		Revenue collected for security screening, fingerprinting, and badging activities.	46.5	75.0	75.0
5244 Rural Airport Lease Receipts		Restricted revenue authority for unrealized receipts at Deadhorse airport.	0.0	23.4	23.4
5244 Rural Airport Lease Receipts		Revenue collected through memorandum of agreement for Transportation Security Administration officers at Deadhorse and Cordova airports.	93.7	40.0	40.0
5244 Rural Airport Lease Receipts		Fingerprint/Badge fees.	54.1	0.0	0.0
5265 COVID Fed (1265 COVID Fed)			6,594.0	3,944.3	0.0
5028 Federal COVID Stimulus - Miscellaneous Grants		Federal Aviation Administration Coronavirus Response and Relief Supplemental Appropriations Act (CRRSAA) and Coronavirus Aid, Relief, and Economic Security Act (CARES) grants.	6,594.0	3,944.3	0.0
5270 FHWA CRRSA (1270 FHWA CRRSA)			1,298.6	0.0	0.0
5031 Federal Highway Administration CRRSA Grants		Federal Highway Administration Coronavirus Response and Relief Supplemental Appropriations Act (CRRSAA) Grants.	1,298.6	0.0	0.0
6004 Gen Fund (1004 Gen Fund)			0.3	0.0	0.0
6047 General Fund - Miscellaneous		Miscellaneous credit.	0.3	0.0	0.0

Revenue Detail (1681)
Department of Transportation and Public Facilities

Component: Northern Region Highways and Aviation (2068)

Revenue Type (OMB Fund Code)	Component	Comment	FY2023 Actuals	FY2024 Management Plan	FY2025 Governor
Revenue Source		Miscellaneous credit.			

Inter-Agency Services (1682)
Department of Transportation and Public Facilities

Component: Northern Region Highways and Aviation (2068)

				FY2023 Actuals	FY2024 Management Plan	FY2025 Governor
Component Totals				22,156.8	20,959.5	18,549.5
With Department of Fish and Game				0.4	0.0	0.0
With Department of Natural Resources				21.0	13.5	13.5
With Department of Transportation and Public Facilities				21,085.8	19,859.2	17,610.2
With Department of Environmental Conservation				5.2	4.0	4.0
With Department of Administration				1,044.0	1,067.8	906.8
With Department of Law				0.4	15.0	15.0
Object Class	Servicing Agency	Explanation	FY2023 Actuals	FY2024 Management Plan	FY2025 Governor	
3015	Inter-Agency Conservation/Environmental	FishGm - Department-wide	Reimbursable Services Agreement with the Department of Fish and Game for project review.	0.4	0.0	0.0
3015	Inter-Agency Conservation/Environmental	NatRes - Department-wide	Annual water usage permits paid to Department of Natural Resources.	11.3	5.2	5.2
3015	Inter-Agency Conservation/Environmental	Trans - Northern Design & Eng Svcs (2299)	Technical services including right of way, materials and design services.	0.0	60.0	60.0
3015	Inter-Agency Conservation/Environmental	EnvCon - Department-wide	Stormwater permit fees paid to Department of Environmental Conservation.	5.2	4.0	4.0
3015	Inter-Agency Conservation/Environmental	NatRes - Department-wide	Reimbursable services agreement with Department of Natural Resources for maintenance of the Birch Lake Wayside.	9.7	8.3	8.3
3017	Inter-Agency Information Technology Non-Telecommunications	Admin - Department-wide	Computer services provided by Department of Administration such as central server, data storage, printing, network services, open connect and task order system.	505.5	500.0	471.1
3018	Inter-Agency Information Technology Telecommunications	Admin - Department-wide	Telecommunications services provided by the Department of Administration such as basic	71.3	70.0	38.1

Inter-Agency Services (1682)
Department of Transportation and Public Facilities

Component: Northern Region Highways and Aviation (2068)

Object Class	Servicing Agency	Explanation	FY2023 Actuals	FY2024 Management Plan	FY2025 Governor
3020	Inter-Agency Building Maintenance	Trans - Northern Region Facilities (2069)			
		telephone services, equipment and features, dedicated voice/data line service, statewide paging, two-way radio, and video conferencing.			
		Reimbursable services agreements with Northern Region Facilities where Highways and Aviation employees are either not available or need expertise in electrical or other facilities.	0.0	26.2	26.2
3021	Inter-Agency Mail	Admin - Department-wide			
		Centralized mail services chargeback	1.3	1.5	1.5
3022	Inter-Agency Human Resources	Admin - Department-wide			
		Chargeback fees for human resource services such as labor relations, position classifications and payroll processing.	268.3	260.0	255.4
3024	Inter-Agency Legal	Law - Department-wide			
		Legal services provided by the Department of Law with added litigations in settling disputes with private and corporate landowners/lessees where gravel stockpiles are in contention and with land ownership issues with native allotments.	0.4	15.0	15.0
3026	Inter-Agency Insurance	Admin - Department-wide			
		Liability insurance for rural airport facilities.	0.0	40.0	40.0
3027	Inter-Agency Financial	Admin - Department-wide			
		Chargeback fees for AKPAY/IRIS/ALDER.	191.0	190.0	100.0
3028	Inter-Agency Americans with Disabilities Act Compliance	Admin - Department-wide			
		Americans with Disabilities Act (ADA) Chargeback	5.8	5.3	0.7
3029	Inter-Agency Education/Training	Admin - Department-wide			
		Procurement training hosted by the Department of Administration.	0.8	1.0	0.0
3029	Inter-Agency Education/Training	Trans - Statewide Aviation (1811)			
		Training hosted by Statewide Aviation for Northern Region airport managers and operators to increase safety and efficient and effective	4.6	5.0	0.0

Inter-Agency Services (1682)
Department of Transportation and Public Facilities

Component: Northern Region Highways and Aviation (2068)

Object Class	Servicing Agency	Explanation	FY2023 Actuals	FY2024 Management Plan	FY2025 Governor
		methods of operating rural and community airports.			
3035	Inter-Agency Other Equipment/Machinery	Trans - State Equipment Fleet (2791) State Equipment Fleet employees working as equipment operators.	0.0	144.1	144.1
3037	State Equipment Fleet	Trans - State Equipment Fleet (2791) Operating and replacement fees paid to State Equipment Fleet (SEF) for over 1,300 vehicles/equipment. Includes credit/reduction for usage on federal projects. Also includes repair costs of X class vehicles. FY16 Deadhorse Airport extended operations increment; \$16.1 GF, \$16.2 GF/PR FY16 reduction to remove funding for Hwy & A/P Surface Maintenance \$-350.0; FY16 reduction to reduce fleet \$-566.7; FY16 Service level reductions \$-1,277.1; FY16 Cost Control & Efficiency Measures \$-340.0 FY17 Service Level Reduction \$-944.1 FY17 GF Program Receipts to Mitigate GF Reduction in FY16 \$-235.9	20,931.6	19,472.0	17,235.0
3037	State Equipment Fleet	Trans - State Equipment Fleet (2791) SEF Fuel A87 Allowed Credit card vehicle fuel purchases through State Equipment Fleet. Funding based on 20,733 gallons @ \$4.86 = \$100.7. Deadhorse Airport extended operations increment; \$16.6 GF, \$16.6 GF/PR FY2016 Cost Control & Efficiency Measures \$-23.0.	108.5	110.9	110.9
3038	Inter-Agency Management/Consulting	Trans - Northern Design, Eng & Const (3375) Reimbursable Services Agreement with Northern Region Design, Engineering, and Construction to support Highways and Aviation with	41.1	41.0	34.0

Inter-Agency Services (1682)
Department of Transportation and Public Facilities

Component: Northern Region Highways and Aviation (2068)

Object Class	Servicing Agency	Explanation	FY2023 Actuals	FY2024 Management Plan	FY2025 Governor
		snow plowing.			

Personal Services Expenditure Detail
Department of Transportation and Public Facilities

Scenario: FY2025 Governor (20959)
Component: Northern Region Highways and Aviation (2068)
RDU: Highways, Aviation and Facilities (408)

PCN	Job Class Title	Time Status	Retire Code	Barg Unit	Location	Salary Sched	Range / Step	Comp Months	Split / Count	Annual Salaries	COLA	Premium Pay	Annual Benefits	Total Costs	UGF Amount
25-0163	Engineer/Architect 2	FT	A	GP	Fairbanks	203	23G / J	12.0		114,668	8,186	0	68,114	190,968	0
25-1170	Rural Airport Foreman	FT	A	LL	Cordova	2EE	49Q	12.0		108,118	0	22,982	75,344	206,444	42,187
25-1171	Equipment Operator, Journey 1	PT	A	LL	Thompson Pass	2FF	54A / B	8.0		36,594	0	12,266	33,746	82,606	23,130
25-1173	Equipment Operator, Journey 2	FT	A	LL	Cordova	2EE	53A / B	12.0		57,473	0	19,241	52,083	128,797	122,357
25-1175	E/Op Jrny 3	FT	A	LL	Cordova	2EE	52F / J	12.0		71,725	0	20,267	58,618	150,610	143,080
25-1176	E/Op Jrny 3	FT	A	LL	Cordova	2EE	52C / D	12.0		64,368	0	19,796	55,270	139,434	132,462
25-1178	Equipment Operator Foreman 1	FT	A	LL	Saint Marys	2II	51M	12.0		89,444	0	23,819	67,715	180,978	106,177
25-1181	Equipment Operator, Journey 2	FT	A	LL	Saint Marys	2II	53J / K	12.0		73,133	0	22,585	60,211	155,929	148,133
25-1225	Stock & Parts Services 3	FT	A	LL	Fairbanks	2EE	54N / O	12.0		74,514	0	1,068	51,599	127,181	36,230
25-1241	Administrative Officer 1	FT	A	GP	Fairbanks	203	17G / J	12.0		76,269	5,444	0	51,691	133,404	40,433
25-1253	Stock & Parts Services 3	FT	A	LL	Nome	2II	54P / Q	12.0		83,745	0	10,725	59,677	154,147	107,903
25-1260	Stock & Parts Services 3	PT	A	LL	Valdez	2FF	54P	10.5		70,384	0	19,535	55,322	145,241	94,407
25-1458	Equipment Operator, Journey 2	FT	A	LL	Fairbanks	2EE	53P / Q	12.0		86,484	0	6,084	58,864	151,432	89,870
25-1472	Equipment Operator, Journey 2	FT	A	LL	Saint Marys	2II	53B / C	12.0		62,471	0	21,841	55,333	139,645	125,681
25-1476	Engineering Associate	FT	A	GP	Fairbanks	203	21N / O	12.0		118,960	9,130	8,932	73,770	210,792	0
25-1562	Equipment Operator, Journey 1	FT	A	LL	Fairbanks	2EE	54E / F	12.0		61,877	0	4,351	47,598	113,826	28,538
25-1574	Env Prgm Spec 3	FT	A	GP	Fairbanks	203	18N	12.0		94,926	6,776	0	59,671	161,373	0
25-1583	Maint & OPS Mgr	FT	A	SS	Fairbanks	2S4	23M / N	12.0		135,507	0	27,900	92,942	256,349	0
25-1613	Equipment Operator, Journey 2	FT	A	LL	Valdez	2FF	53B / C	12.0		60,354	0	19,444	53,402	133,200	79,920
25-1638	Administrative Assistant 1	FT	A	GP	Fairbanks	203	12F / G	12.0		52,272	3,731	0	41,427	97,430	58,458
25-1670	Equipment Operator, Journey 2	FT	A	LL	Fairbanks	2EE	53P	12.0		84,349	0	6,084	57,951	148,384	22,505
25-1671	E/Op Jrny 3	FT	A	LL	Nome	2II	52C / D	12.0		68,088	0	22,264	57,916	148,268	133,441
25-1679	Administrative Assistant 1	FT	A	GP	Fairbanks	203	12B / C	12.0		45,810	3,332	863	39,033	89,038	53,423
25-1681	E/Op Subjrny 2	FT	A	LL	Fairbanks	2EE	56B / C	12.0		49,384	0	8,892	44,197	102,473	0
25-1706	E/Op Subjrny 1	PT	A	LL	Cantwell	2HH	58B	8.0		31,457	0	2,552	27,394	61,403	0
25-1734	Environmental Impact Analyst 3	FT	A	GP	Fairbanks	203	19G / J	12.0		88,345	6,777	6,591	59,675	161,388	0
25-1783	Office Assistant 3	FT	A	GP	Nome	237	11A / B	12.0		55,770	4,131	2,104	43,823	105,828	105,828
25-1788	Engineering Assistant 2	FT	A	GG	Fairbanks	203	19O	12.0		104,696	8,049	8,053	67,293	188,091	0
25-1806	Accounting Technician 2	FT	A	GP	Fairbanks	203	14B / C	12.0		51,303	3,662	0	41,013	95,978	0

Note: If a position is split, an asterisk (*) will appear in the Split/Count column. If the split position is also counted in the component, two asterisks (**) will appear in this column. [No valid job title] appearing in the Job Class Title indicates that the PCN has an invalid class code or invalid range for the class code effective date of this scenario.

Personal Services Expenditure Detail
Department of Transportation and Public Facilities

Scenario: FY2025 Governor (20959)
Component: Northern Region Highways and Aviation (2068)
RDU: Highways, Aviation and Facilities (408)

PCN	Job Class Title	Time Status	Retire Code	Barg Unit	Location	Salary Sched	Range / Step	Comp Months	Split / Count	Annual Salaries	COLA	Premium Pay	Annual Benefits	Total Costs	UGF Amount
25-1818	Engineering Assistant 2	FT	A	GP	Fairbanks	203	19E / F	12.0		82,780	6,350	6,169	57,114	152,413	0
25-1831	E/Op Subjmy 1	PT	A	LL	Tazlina	2FF	58B	8.0		30,224	0	2,452	26,824	59,500	29,750
25-1901	Maint & OPS Spr	FT	A	SS	Tok	200	21F / J	12.0		98,388	0	0	65,133	163,521	49,056
25-1902	Maint & OPS Spr	FT	A	SS	Fairbanks	2S4	21F	12.0		103,251	0	0	67,213	170,464	51,139
25-1903	Maint & OPS Spr	FT	A	SS	Fairbanks	203	21R	12.0		141,532	0	0	83,586	225,118	112,559
25-1904	Administrative Assistant 3	FT	A	GP	Tok	200	15C / D	12.0		57,117	4,229	2,123	44,408	107,877	75,514
25-1905	Administrative Assistant 3	FT	A	GP	Fairbanks	203	15G	12.0		65,520	4,857	2,520	48,171	121,068	102,908
25-1907	Office Assistant 3	FT	A	GP	Cordova	211	11N	12.0		63,161	4,682	2,429	47,123	117,395	117,395
25-1908	Equipment Operator Foreman 1	FT	A	LL	Galena	2JJ	51A / B	12.0		69,563	0	4,912	51,126	125,601	95,361
25-1909	Equipment Operator, Journey 2	FT	A	LL	Galena	2JJ	53E / F	12.0		70,889	0	4,968	51,717	127,574	114,817
25-1911	Equipment Operator, Journey 2	FT	A	LL	Trimms Camp	2FF	53C / D	12.0		61,344	0	4,396	47,390	113,130	56,565
25-1914	Engineer/Architect 4	FT	A	SS	Fairbanks	203	26O / P	12.0		168,508	0	0	95,074	263,582	144,970
25-1915	Equipment Operator Foreman 1	FT	A	LL	Fairbanks	2EE	51F / J	12.0		76,394	0	5,361	54,239	135,994	0
25-1916	Mts/Tces Jrny 2	FT	A	LL	Fairbanks	2EE	51A / B	12.0		64,585	0	18,200	54,680	137,465	67,791
25-1917	Equipment Operator, Journey 2	FT	A	LL	Fairbanks	2EE	53J / K	12.0		70,408	0	4,933	51,496	126,837	51,029
25-1918	Equipment Operator, Journey 2	FT	A	LL	Fairbanks	2EE	53A / B	12.0		57,473	0	4,057	45,589	107,119	37,492
25-1919	Equipment Operator Foreman 2	FT	A	LL	Fairbanks	2EE	50M	12.0		89,756	0	6,474	60,430	156,660	0
25-1920	Equipment Operator Foreman 1	FT	A	LL	Fairbanks	2EE	51N / O	12.0		90,691	0	6,388	60,793	157,872	134,191
25-1921	Equipment Operator, Journey 2	FT	A	LL	Cantwell	2HH	53B / C	12.0		61,478	0	4,402	47,449	113,329	67,997
25-1924	Equipment Operator, Journey 2	FT	A	LL	Fairbanks	2EE	53J	12.0		68,398	0	4,933	50,636	123,967	0
25-1926	Equipment Operator, Journey 2	FT	A	LL	Fairbanks	2EE	53M / N	12.0		76,264	0	5,476	54,233	135,973	81,584
25-1927	Equipment Operator Foreman 1	FT	A	LL	Fairbanks	2EE	51M	12.0		85,513	0	6,168	58,485	150,166	67,575
25-1928	Equipment Operator, Journey 1	FT	A	LL	Fairbanks	2EE	54D / E	12.0		59,612	0	4,213	46,571	110,396	0
25-1929	Equipment Operator Foreman 1	FT	A	LL	Fairbanks	2EE	51N / O	12.0		89,498	0	6,388	60,283	156,169	0
25-1930	Equipment Operator,	FT	A	LL	Fairbanks	2EE	53A / B	12.0		57,473	0	4,057	45,589	107,119	64,271

Note: If a position is split, an asterisk (*) will appear in the Split/Count column. If the split position is also counted in the component, two asterisks (**) will appear in this column.
[No valid job title] appearing in the Job Class Title indicates that the PCN has an invalid class code or invalid range for the class code effective date of this scenario.

Personal Services Expenditure Detail
Department of Transportation and Public Facilities

Scenario: FY2025 Governor (20959)
Component: Northern Region Highways and Aviation (2068)
RDU: Highways, Aviation and Facilities (408)

PCN	Job Class Title	Time Status	Retire Code	Barg Unit	Location	Salary Sched	Range / Step	Comp Months	Split / Count	Annual Salaries	COLA	Premium Pay	Annual Benefits	Total Costs	UGF Amount
25-1931	Journey 2 Equipment Operator, Journey 2	FT	A	LL	Fairbanks	2EE	53N	12.0		78,630	0	5,671	55,328	139,629	0
25-1932	Mts/Bfc Frmn	FT	A	LL	Fairbanks	2EE	50P / Q	12.0		101,899	0	7,198	65,933	175,030	87,515
25-1933	Equipment Operator, Journey 1	FT	A	LL	Fairbanks	2EE	54E / F	12.0		60,757	0	4,351	47,119	112,227	0
25-1934	Equipment Operator, Journey 1	FT	A	LL	Montana Creek	2EE	54E / F	12.0		64,517	0	4,564	48,819	117,900	70,740
25-1935	Equipment Operator, Journey 2	FT	A	LL	Fairbanks	2EE	53F / J	12.0		66,263	0	4,765	49,651	120,679	0
25-1936	Equipment Operator, Journey 2	FT	A	LL	Fairbanks	2EE	53J	12.0		68,398	0	4,933	50,636	123,967	0
25-1937	Equipment Operator, Journey 2	FT	A	LL	Fairbanks	2EE	53F	12.0		66,069	0	4,765	49,568	120,402	78,261
25-1938	Equipment Operator, Journey 2	PT	A	LL	Delta Junction	2FF	53A / B	8.0		39,221	0	3,096	30,947	73,264	43,958
25-1939	Equipment Operator, Journey 2	FT	A	LL	Paxson	2FF	53D / E	12.0		64,199	0	4,537	48,671	117,407	58,704
25-1940	E/Op Subjmy 1	PT	A	LL	Fairbanks	2EE	58B	8.0		29,614	0	2,403	26,542	58,559	0
25-1941	Equipment Operator, Journey 2	FT	A	LL	Fairbanks	2EE	53J	12.0		68,398	0	4,933	50,636	123,967	0
25-1942	Equipment Operator, Journey 1	PT	A	LL	Nenana	2HH	54L / M	9.0		55,884	0	4,030	40,080	99,994	49,997
25-1943	Equipment Operator, Journey 2	FT	A	LL	Fairbanks	2EE	53F	12.0		66,069	0	4,765	49,568	120,402	60,201
25-1944	Equipment Operator, Journey 1	FT	A	LL	Fairbanks	2EE	54F	12.0		62,305	0	4,494	47,843	114,642	0
25-1946	Equipment Operator, Journey 1	FT	A	LL	Fairbanks	2EE	54D / E	12.0		60,170	0	4,213	46,809	111,192	46,715
25-1947	Equipment Operator Foreman 1	FT	A	LL	Delta Junction	2FF	51P	12.0		96,015	0	6,925	63,300	166,240	83,120
25-1948	Equipment Operator, Journey 2	FT	A	LL	Birch Lake	2EE	53A / B	12.0		57,473	0	4,057	45,589	107,119	64,983
25-1949	Equipment Operator, Journey 2	FT	A	LL	Delta Junction	2FF	53C / D	12.0		62,142	0	4,396	47,731	114,269	35,708
25-1950	Equipment Operator, Journey 2	FT	A	LL	Delta Junction	2FF	53F / J	12.0		69,181	0	4,836	50,930	124,947	74,968
25-1951	Equipment Operator, Journey 2	FT	A	LL	Delta Junction	2FF	53F	12.0		67,046	0	4,836	50,017	121,899	60,950

Note: If a position is split, an asterisk (*) will appear in the Split/Count column. If the split position is also counted in the component, two asterisks (**) will appear in this column.
[No valid job title] appearing in the Job Class Title indicates that the PCN has an invalid class code or invalid range for the class code effective date of this scenario.

Personal Services Expenditure Detail
Department of Transportation and Public Facilities

Scenario: FY2025 Governor (20959)
Component: Northern Region Highways and Aviation (2068)
RDU: Highways, Aviation and Facilities (408)

PCN	Job Class Title	Time Status	Retire Code	Barg Unit	Location	Salary Sched	Range / Step	Comp Months	Split / Count	Annual Salaries	COLA	Premium Pay	Annual Benefits	Total Costs	UGF Amount
25-1952	Equipment Operator Foreman 1	FT	A	LL	Cantwell	2HH	51P	12.0		97,991	0	7,068	64,206	169,265	59,243
25-1954	Administrative Assistant 3	FT	A	GP	Fairbanks	203	15D	12.0		58,988	4,373	2,268	45,270	110,899	88,719
25-1955	Equipment Operator, Journey 2	FT	A	LL	Nenana	2HH	53F / J	12.0		69,119	0	4,978	50,964	125,061	62,531
25-1957	Equipment Operator Foreman 1	FT	A	LL	Tok	2FF	51N / O	12.0		92,464	0	6,459	61,582	160,505	80,253
25-1958	Equipment Operator, Journey 2	FT	A	LL	Tok	2FF	53O	12.0		82,415	0	5,944	57,064	145,423	79,983
25-1959	Equipment Operator, Journey 2	PT	A	LL	Tok	2FF	53A / B	8.0		39,221	0	3,096	30,947	73,264	43,958
25-1960	Equipment Operator, Journey 2	FT	A	LL	Manley Hot Springs	2HH	53F / J	12.0		70,187	0	26,547	60,646	157,380	110,166
25-1961	Equipment Operator, Journey 1	PT	A	LL	Healy	2HH	54A / B	8.0		37,911	0	3,029	30,358	71,298	0
25-1962	Equipment Operator, Journey 2	FT	A	LL	Tok	2FF	53E / F	12.0		66,959	0	4,684	49,914	121,557	72,934
25-1964	Equipment Operator, Journey 2	FT	A	LL	Montana Creek	2EE	53F	12.0		69,022	0	9,957	53,052	132,031	52,812
25-1965	E/Op Jrny 3	FT	A	LL	Deadhorse	2JJ	52A / B	12.0		66,166	0	28,532	59,775	154,473	116,389
25-1966	Equipment Operator, Journey 2	PT	A	LL	Tok	2FF	53A / B	11.5		55,837	0	4,128	44,117	104,082	57,245
25-1967	E/Op Subjrny 1	PT	A	LL	Delta Junction	2FF	58B / C	11.5		44,140	0	3,270	38,747	86,157	0
25-1968	Mts/Tces Jrny 2	FT	A	LL	Fairbanks	2EE	51J	12.0		76,966	0	23,751	62,349	163,066	32,613
25-1969	Equipment Operator, Journey 2	FT	A	LL	Manley Hot Springs	2HH	53F / J	12.0		69,410	0	27,145	60,569	157,124	109,987
25-1971	Equipment Operator, Journey 2	FT	A	LL	Manley Hot Springs	2HH	53F / J	12.0		70,284	0	27,145	60,943	158,372	95,023
25-1973	Equipment Operator, Journey 2	PT	A	LL	Fairbanks	2EE	53E / F	8.0		42,681	0	3,460	32,583	78,724	0
25-1975	Equipment Operator, Journey 2	FT	A	LL	Delta Junction	2FF	53P / Q	12.0		85,703	0	6,154	58,560	150,417	0
25-1977	Equipment Operator, Journey 2	FT	A	LL	Tok	2FF	53K / L	12.0		73,990	0	5,178	53,133	132,301	0
25-1979	Equipment Operator, Journey 2	FT	A	LL	Fairbanks	2EE	53K / L	12.0		72,069	0	5,107	52,281	129,457	71,201
25-1980	E/Op Jrny 3	FT	A	LL	Livengood	2HH	52A / B	12.0		64,211	0	33,217	60,943	158,371	15,837
25-1981	Equipment Operator,	FT	A	LL	Livengood	2HH	53N	12.0		81,583	0	26,779	65,619	173,981	22,015

Note: If a position is split, an asterisk (*) will appear in the Split/Count column. If the split position is also counted in the component, two asterisks (**) will appear in this column. [No valid job title] appearing in the Job Class Title indicates that the PCN has an invalid class code or invalid range for the class code effective date of this scenario.

Personal Services Expenditure Detail
Department of Transportation and Public Facilities

Scenario: FY2025 Governor (20959)
Component: Northern Region Highways and Aviation (2068)
RDU: Highways, Aviation and Facilities (408)

PCN	Job Class Title	Time Status	Retire Code	Barg Unit	Location	Salary Sched	Range / Step	Comp Months	Split / Count	Annual Salaries	COLA	Premium Pay	Annual Benefits	Total Costs	UGF Amount
25-1982	Journey 2 E/Op Jrny 3	FT	A	LL	Manley Hot Springs	2HH	52L / M	12.0		82,486	0	34,316	69,229	186,031	93,016
25-1983	E/Op Jrny 3	PT	A	LL	South Fork	2FF	52J	8.0		49,300	0	4,000	35,645	88,945	41,451
25-1985	Equipment Operator, Journey 2	FT	A	LL	Livengood	2HH	53D / E	12.0		66,752	0	24,973	58,503	150,228	32,750
25-1986	Equipment Operator, Journey 2	FT	A	LL	Fairbanks	2EE	53F / J	12.0		66,593	0	4,765	49,792	121,150	0
25-1989	Equipment Operator, Journey 2	FT	A	LL	Fairbanks	2EE	53F / J	12.0		66,651	0	4,765	49,817	121,233	0
25-1990	E/Op Jrny 3	FT	A	LL	Nenana	2HH	52N	12.0		86,886	0	6,267	59,114	152,267	0
25-1991	Equipment Operator, Journey 2	FT	A	LL	Cantwell	2HH	53F	12.0		69,022	0	4,978	50,922	124,922	0
25-1992	Equipment Operator, Journey 2	FT	A	LL	Tok	2FF	53P	12.0		85,326	0	6,154	58,399	149,879	0
25-1993	Equipment Operator, Journey 2	FT	A	LL	Nenana	2HH	53L / M	12.0		77,688	0	5,502	54,853	138,043	0
25-1994	E/Op Subjrny 2	PT	A	LL	Tok	2FF	56B / C	11.5		48,148	0	3,609	40,606	92,363	0
25-1995	E/Op Jrny 3	FT	A	LL	Healy	2HH	52L	12.0		81,208	0	5,857	56,510	143,575	71,788
25-1996	Equipment Operator, Journey 2	FT	A	LL	Fairbanks	2EE	53A / B	12.0		57,473	0	4,057	45,589	107,119	0
25-1997	Equipment Operator, Journey 2	FT	A	LL	Healy	2HH	53B / C	12.0		62,329	0	4,402	47,813	114,544	57,272
25-1998	Equipment Operator, Journey 2	PT	A	LL	Healy	2HH	53J / K	8.0		47,849	0	3,859	34,964	86,672	0
25-1999	Equipment Operator, Journey 2	FT	A	LL	Cantwell	2HH	53C / D	12.0		64,379	0	4,539	48,749	117,667	0
25-2000	Equipment Operator, Journey 2	FT	A	LL	Cantwell	2HH	53L	12.0		76,280	0	5,502	54,251	136,033	0
25-2001	Equipment Operator, Journey 2	FT	A	LL	Cantwell	2HH	53C / D	12.0		63,206	0	4,539	48,247	115,992	0
25-2002	E/Op Jrny 3	FT	A	LL	Northway	2FF	52P / Q	12.0		93,039	0	6,565	61,873	161,477	104,960
25-2003	Equipment Operator, Journey 2	PT	A	LL	Northway	2FF	53A / B	8.0		38,764	0	3,096	30,752	72,612	0
25-2005	Equipment Operator, Journey 2	FT	A	LL	Northway	2FF	53A / B	12.0		58,451	0	4,128	46,038	108,617	65,170
25-2006	Mts/EI Jrny 2	FT	A	LL	Utqiagvik	2JJ	51F / J	12.0		80,795	0	8,572	57,495	146,862	132,176
25-2008	Equipment Operator, Journey 2	FT	A	LL	Livengood	2HH	53A / B	12.0		60,426	0	25,485	56,017	141,928	85,157

Note: If a position is split, an asterisk (*) will appear in the Split/Count column. If the split position is also counted in the component, two asterisks (**) will appear in this column. [No valid job title] appearing in the Job Class Title indicates that the PCN has an invalid class code or invalid range for the class code effective date of this scenario.

Personal Services Expenditure Detail
Department of Transportation and Public Facilities

Scenario: FY2025 Governor (20959)
Component: Northern Region Highways and Aviation (2068)
RDU: Highways, Aviation and Facilities (408)

PCN	Job Class Title	Time Status	Retire Code	Barg Unit	Location	Salary Sched	Range / Step	Comp Months	Split / Count	Annual Salaries	COLA	Premium Pay	Annual Benefits	Total Costs	UGF Amount
25-2009	Equipment Operator, Journey 2	PT	A	LL	South Fork	2FF	53A / B	8.0		38,764	0	3,096	30,752	72,612	65,351
25-2010	Equipment Operator, Journey 2	PT	A	LL	South Fork	2FF	53D	8.0		41,939	0	3,403	32,241	77,583	69,825
25-2011	Equipment Operator, Journey 2	PT	A	LL	South Fork	2FF	53F	8.0		44,698	0	3,627	33,517	81,842	73,658
25-2012	Equipment Operator, Journey 2	PT	A	LL	Eagle	1FF	53A / B	8.0		38,764	0	3,096	30,752	72,612	65,351
25-2013	E/Op Jrny 3	FT	A	LL	Eagle	2FF	52M	12.0		82,019	0	5,916	56,882	144,817	130,335
25-2014	Equipment Operator, Journey 2	PT	A	LL	Eagle	2FF	53A / B	8.0		38,764	0	3,096	30,752	72,612	65,351
25-2017	Equipment Operator, Journey 1	FT	A	LL	Fairbanks	2EE	54C / D	12.0		56,843	0	4,080	45,329	106,252	96,689
25-2018	E/Op Subjrny 2	PT	A	LL	Nenana	2HH	56A / B	8.0		33,949	0	3,631	28,921	66,501	0
25-2019	E/Op Subjrny 2	FT	A	LL	Chandalar (Chandler) Camp	2JJ	56B / C	12.0		54,382	0	23,912	52,759	131,053	104,842
25-2021	Equipment Operator, Journey 2	FT	A	LL	Northway	2FF	53A / B	12.0		58,451	0	4,128	46,038	108,617	65,170
25-2022	Equipment Operator, Journey 1	FT	A	LL	Fairbanks	2EE	54E / F	12.0		61,449	0	4,351	47,415	113,215	0
25-2023	Rural Airport Foreman	FT	A	LL	Deadhorse	2JJ	49O	12.0		105,623	0	40,456	81,751	227,830	95,689
25-2025	Equipment Operator, Journey 2	PT	A	LL	Cantwell	2HH	53A / B	8.0		40,081	0	3,202	31,361	74,644	0
25-2026	Equipment Operator, Journey 2	FT	A	LL	Dalton Highway	2JJ	53J / K	12.0		70,006	0	26,241	60,437	156,684	78,342
25-2028	E/Op Jrny 3	FT	A	LL	Chandalar (Chandler) Camp	2JJ	52M / N	12.0		86,793	0	33,753	70,830	191,376	153,101
25-2029	E/Op Jrny 3	FT	A	LL	Sag River	2JJ	52N	12.0		88,841	0	34,884	72,190	195,915	127,345
25-2030	E/Op Jrny 3	FT	A	LL	Seven Mile Camp	2JJ	52J / K	12.0		79,592	0	30,602	66,403	176,597	114,788
25-2031	Equipment Operator, Journey 2	FT	A	LL	Seven Mile Camp	2JJ	53K	12.0		75,718	0	29,764	64,387	169,869	101,921
25-2032	E/Op Jrny 3	FT	A	LL	Jim River	2JJ	52C / D	12.0		70,903	0	30,355	62,581	163,839	98,303
25-2034	E/Op Jrny 3	FT	A	LL	Coldfoot Camp	2JJ	52O	12.0		91,835	0	38,520	75,025	205,380	143,766
25-2035	Equipment Operator, Journey 2	FT	A	LL	Sag River	2JJ	53E / F	12.0		70,364	0	31,232	62,725	164,321	106,809

Note: If a position is split, an asterisk (*) will appear in the Split/Count column. If the split position is also counted in the component, two asterisks (**) will appear in this column. [No valid job title] appearing in the Job Class Title indicates that the PCN has an invalid class code or invalid range for the class code effective date of this scenario.

Personal Services Expenditure Detail
Department of Transportation and Public Facilities

Scenario: FY2025 Governor (20959)
Component: Northern Region Highways and Aviation (2068)
RDU: Highways, Aviation and Facilities (408)

PCN	Job Class Title	Time Status	Retire Code	Barg Unit	Location	Salary Sched	Range / Step	Comp Months	Split / Count	Annual Salaries	COLA	Premium Pay	Annual Benefits	Total Costs	UGF Amount
25-2036	Equipment Operator, Journey 2	PT	A	LL	Chandalar (Chandler) Camp	2JJ	53J / K	11.5		70,352	0	28,817	60,884	160,053	128,042
25-2037	Equipment Operator, Journey 2	FT	A	LL	Unalakleet	2II	53J / K	11.5		69,717	0	22,585	57,947	150,249	112,687
25-2038	Equipment Operator, Journey 2	FT	A	LL	Dalton Highway	2JJ	53A / B	12.0		62,381	0	26,886	57,452	146,719	73,360
25-2040	Equipment Operator, Journey 2	FT	A	LL	Sag River	2JJ	53E / F	12.0		70,189	0	26,551	60,648	157,388	102,302
25-2041	Equipment Operator Foreman 1	FT	A	LL	Dalton Highway	2JJ	51L / M	12.0		84,898	0	31,630	69,112	185,640	92,820
25-2042	Equipment Operator, Journey 2	FT	A	LL	Coldfoot Camp	2JJ	53F	12.0		70,977	0	26,318	60,886	158,181	110,727
25-2043	E/Op Jrny 3	FT	A	LL	Deadhorse	2JJ	52M	12.0		85,950	0	33,753	70,470	190,173	171,156
25-2044	E/Op Jrny 3	FT	A	LL	Utqiagvik	2JJ	52P	12.0		94,955	0	10,273	64,279	169,507	144,081
25-2045	Equipment Operator, Journey 2	FT	A	LL	Dalton Highway	2JJ	53N / O	12.0		81,437	0	31,213	67,453	180,103	90,052
25-2046	E/Op Jrny 3	FT	A	LL	Deadhorse	2JJ	52K	12.0		80,481	0	31,613	67,215	179,309	161,378
25-2047	E/Op Jrny 3	FT	A	LL	Deadhorse	2JJ	52N	12.0		88,841	0	34,884	72,190	195,915	176,324
25-2048	E/Op Jrny 3	FT	A	LL	Deadhorse	2JJ	52P	12.0		94,955	0	37,275	75,827	208,057	187,251
25-2049	Equipment Operator, Journey 1	FT	A	LL	Montana Creek	2EE	54D / E	12.0		61,672	0	8,853	49,436	119,961	71,977
25-2050	Equipment Operator, Journey 1	FT	A	LL	Sag River	2JJ	54C / D	12.0		62,445	0	21,471	55,163	139,079	83,447
25-2051	Equipment Operator, Journey 2	FT	A	LL	Chandalar (Chandler) Camp	2JJ	53O / P	12.0		86,709	0	33,915	70,863	191,487	153,190
25-2053	Equipment Operator, Journey 2	FT	A	LL	Jim River	2JJ	53A / B	12.0		62,381	0	23,689	56,085	142,155	85,293
25-2055	E/Op Subjrny 2	FT	A	LL	Manley Hot Springs	2HH	56D / E	12.0		56,005	0	24,060	53,516	133,581	86,828
25-2056	Mts/EI Jrny 2	FT	A	LL	Deadhorse	2JJ	51A / B	12.0		69,493	0	30,670	62,112	162,275	137,934
25-2057	Equipment Operator, Journey 1	FT	A	LL	Sag River	2JJ	54A / B	12.0		59,109	0	28,553	56,766	144,428	93,878
25-2058	Equipment Operator, Journey 2	FT	A	LL	Jim River	2JJ	53J / K	12.0		73,808	0	28,817	63,165	165,790	99,474
25-2059	Equipment Operator, Journey 1	FT	A	LL	Livengood	2HH	54C / D	12.0		59,796	0	21,259	53,940	134,995	87,747
25-2060	Equipment Operator,	FT	A	LL	Livengood	2HH	53A / B	12.0		60,426	0	25,485	56,017	141,928	85,157

Note: If a position is split, an asterisk (*) will appear in the Split/Count column. If the split position is also counted in the component, two asterisks (**) will appear in this column. [No valid job title] appearing in the Job Class Title indicates that the PCN has an invalid class code or invalid range for the class code effective date of this scenario.

Personal Services Expenditure Detail
Department of Transportation and Public Facilities

Scenario: FY2025 Governor (20959)
Component: Northern Region Highways and Aviation (2068)
RDU: Highways, Aviation and Facilities (408)

PCN	Job Class Title	Time Status	Retire Code	Barg Unit	Location	Salary Sched	Range / Step	Comp Months	Split / Count	Annual Salaries	COLA	Premium Pay	Annual Benefits	Total Costs	UGF Amount
25-2061	Journey 2 Equipment Operator Foreman 2	FT	A	LL	Deadhorse	2JJ	50M / N	12.0		96,544	0	37,163	76,459	210,166	117,588
25-2062	Equipment Operator, Journey 2	FT	A	LL	Chandalar (Chandler) Camp	2JJ	53N / O	12.0		85,175	0	33,611	70,077	188,863	151,090
25-2064	E/Op Jrny 3	FT	A	LL	Deadhorse	2JJ	52N	12.0		88,841	0	34,884	72,190	195,915	176,324
25-2065	Equipment Operator, Journey 2	FT	A	LL	Seven Mile Camp	2JJ	53E / F	12.0		69,944	0	26,551	60,544	157,039	94,223
25-2066	Equipment Operator, Journey 2	FT	A	LL	Jim River	2JJ	53L / M	12.0		79,643	0	30,747	66,486	176,876	114,969
25-2068	E/Op Jrny 3	FT	A	LL	Deadhorse	2JJ	52J	12.0		77,881	0	30,602	65,671	174,154	156,739
25-2069	Equipment Operator, Journey 1	FT	A	LL	Coldfoot Camp	2JJ	54C / D	12.0		62,306	0	22,031	55,344	139,681	97,777
25-2070	Equipment Operator, Journey 2	FT	A	LL	Chandalar (Chandler) Camp	2JJ	53E / F	12.0		69,226	0	26,551	60,236	156,013	124,810
25-2071	Equipment Operator, Journey 2	FT	A	LL	Fairbanks	2EE	53K / L	12.0		73,222	0	5,107	52,774	131,103	124,548
25-2072	Equipment Operator, Journey 2	FT	A	LL	Fairbanks	2EE	53A / B	12.0		57,473	0	4,057	45,589	107,119	64,271
25-2073	Administrative Assistant 3	FT	A	GP	Fairbanks	203	15E / F	12.0		62,317	4,616	2,341	46,725	115,999	91,244
25-2074	E/Op Subjrny 1	PT	A	LL	Fairbanks	2EE	58B	10.0		37,017	0	3,204	33,263	73,484	29,394
25-2075	Mts/Tces Frmn	FT	A	LL	Fairbanks	2EE	50J	12.0		80,772	0	24,026	64,095	168,893	0
25-2077	Equipment Operator, Journey 1	FT	A	LL	Fairbanks	2EE	54D / E	12.0		59,994	0	4,213	46,734	110,941	55,471
25-2079	Equipment Operator, Journey 1	FT	A	LL	Fairbanks	2EE	54D / E	12.0		59,947	0	4,213	46,714	110,874	0
25-2080	E/Op Subjrny 2	FT	A	LL	Sag River	2JJ	56A / B	12.0		53,724	0	23,745	52,406	129,875	12,988
25-2081	Equipment Operator, Journey 1	FT	A	LL	Fairbanks	2EE	54A / B	12.0		54,201	0	3,826	44,091	102,118	40,847
25-2083	Equipment Operator, Journey 2	PT	A	LL	Trimms Camp	2FF	53A / B	8.0		38,764	0	3,096	30,752	72,612	43,567
25-2085	Equipment Operator, Journey 2	PT	A	LL	Trimms Camp	2FF	53A / B	8.0		38,764	0	3,096	30,752	72,612	29,045
25-2086	Equipment Operator, Journey 2	PT	A	LL	Coldfoot Camp	2JJ	53E / F	11.5		66,794	0	27,878	58,961	153,633	107,543
25-2087	Equipment Operator, Journey 2	FT	A	LL	Nenana	2HH	53N / O	12.0		84,273	0	5,884	57,833	147,990	88,794

Note: If a position is split, an asterisk (*) will appear in the Split/Count column. If the split position is also counted in the component, two asterisks (**) will appear in this column.
[No valid job title] appearing in the Job Class Title indicates that the PCN has an invalid class code or invalid range for the class code effective date of this scenario.

Personal Services Expenditure Detail
Department of Transportation and Public Facilities

Scenario: FY2025 Governor (20959)
Component: Northern Region Highways and Aviation (2068)
RDU: Highways, Aviation and Facilities (408)

PCN	Job Class Title	Time Status	Retire Code	Barg Unit	Location	Salary Sched	Range / Step	Comp Months	Split / Count	Annual Salaries	COLA	Premium Pay	Annual Benefits	Total Costs	UGF Amount
25-2088	Equipment Operator, Journey 2	FT	A	LL	Fairbanks	2EE	53J	12.0		68,398	0	4,933	50,636	123,967	61,984
25-2089	Equipment Operator, Journey 2	FT	A	LL	Tok	2FF	53K / L	12.0		73,256	0	5,178	52,819	131,253	52,501
25-2090	Equipment Operator, Journey 2	FT	A	LL	Chandalar (Chandler) Camp	2JJ	53A / B	12.0		62,381	0	32,015	59,646	154,042	123,234
25-2091	Equipment Operator, Journey 2	FT	A	LL	Seven Mile Camp	2JJ	53J	12.0		73,306	0	28,817	62,951	165,074	99,044
25-2098	Safety Officer	FT	A	GP	Fairbanks	203	18B / C	12.0		68,465	5,260	5,217	50,584	129,526	116,573
25-2117	Administrative Assistant 1	FT	A	GP	Fairbanks	203	12L	12.0		58,812	4,360	2,262	45,192	110,626	66,376
25-2119	Engineer/Architect 3	FT	A	SS	Fairbanks	203	25N	12.0		154,232	0	0	89,018	243,250	0
25-2120	Accounting Technician 1	FT	A	GP	Fairbanks	203	12J / K	12.0		55,465	4,262	4,243	44,608	108,578	86,862
25-2122	Administrative Officer 2	FT	A	SS	Fairbanks	203	19E / F	12.0		86,247	0	0	59,940	146,187	102,331
25-2123	Rural Airport Foreman	FT	A	LL	Nome	2II	49N	12.0		101,152	0	24,664	73,084	198,900	179,010
25-2124	Equipment Operator Foreman 1	FT	A	LL	Nome	2II	51K	12.0		83,642	0	23,401	65,055	172,098	103,259
25-2125	E/Op Jrny 3	FT	A	LL	Nome	2II	52J / K	12.0		77,662	0	22,915	62,289	162,866	146,579
25-2126	Equipment Operator, Journey 2	FT	A	LL	Nome	2II	53K	12.0		74,741	0	22,759	60,973	158,473	95,084
25-2127	Equipment Operator, Journey 2	FT	A	LL	Valdez	2FF	53F / J	12.0		68,191	0	20,020	57,000	145,211	87,127
25-2128	Rural Airport Foreman	FT	A	LL	Kotzebue	2JJ	49M / N	12.0		101,427	0	24,491	73,128	199,046	159,237
25-2129	E/Op Jrny 3	FT	A	LL	Kotzebue	2JJ	52A / B	12.0		66,166	0	22,046	57,001	145,213	130,692
25-2130	E/Op Jrny 3	FT	A	LL	Nome	2II	52A / B	12.0		65,189	0	10,822	51,783	127,794	115,015
25-2132	Equipment Operator Foreman 1	FT	A	LL	Unalakleet	2II	51O	12.0		95,682	0	24,269	70,576	190,527	142,895
25-2135	Equipment Operator, Journey 2	FT	A	LL	Nome	2II	53F / J	12.0		71,416	0	22,417	59,405	153,238	99,605
25-2136	Equipment Operator, Journey 2	FT	A	LL	Nome	2II	53J	12.0		72,328	0	22,585	59,867	154,780	100,607
25-2137	E/Op Jrny 3	FT	A	LL	Kotzebue	2JJ	52O	12.0		91,835	0	23,992	68,812	184,639	166,175
25-2138	Administrative Assistant 3	FT	A	GP	Nome	237	15D / E	12.0		80,174	5,939	3,018	54,652	143,783	122,216
25-2139	E/Op Jrny 3	FT	A	LL	Nome	2II	52E / F	12.0		73,192	0	11,419	55,461	140,072	126,065
25-2140	E/Op Jrny 3	FT	A	LL	Nome	2II	52A / B	12.0		65,026	0	10,822	51,713	127,561	114,805
25-2142	Office Assistant 3	FT	A	GP	Kotzebue	260	11A / B	12.0		65,047	4,819	2,457	47,942	120,265	120,265
25-2146	E/Op Jrny 3	FT	A	LL	Nome	2II	52A / B	12.0		65,026	0	10,822	51,713	127,561	114,805
25-2147	E/Op Jrny 3	FT	A	LL	Kotzebue	2JJ	52B / C	12.0		68,006	0	22,187	57,848	148,041	133,237
25-2149	Equipment Operator,	FT	A	LL	Unalakleet	2II	53B / C	12.0		63,496	0	21,841	55,771	141,108	122,386

Note: If a position is split, an asterisk (*) will appear in the Split/Count column. If the split position is also counted in the component, two asterisks (**) will appear in this column. [No valid job title] appearing in the Job Class Title indicates that the PCN has an invalid class code or invalid range for the class code effective date of this scenario.

Personal Services Expenditure Detail
Department of Transportation and Public Facilities

Scenario: FY2025 Governor (20959)
Component: Northern Region Highways and Aviation (2068)
RDU: Highways, Aviation and Facilities (408)

PCN	Job Class Title	Time Status	Retire Code	Barg Unit	Location	Salary Sched	Range / Step	Comp Months	Split / Count	Annual Salaries	COLA	Premium Pay	Annual Benefits	Total Costs	UGF Amount
25-2151	Journey 2 Equipment Operator, Journey 2	FT	A	LL	Nome	2II	53A / B	12.0		61,251	0	21,709	54,755	137,715	61,972
25-2152	Equipment Operator, Journey 2	FT	A	LL	Nome	2II	53K	12.0		74,741	0	22,759	60,973	158,473	95,084
25-2153	Equipment Operator, Journey 2	FT	A	LL	Nome	2II	53C	12.0		63,906	0	10,823	51,234	125,963	75,578
25-2154	E/Op Jrny 3	FT	A	LL	Nome	2II	52A / B	12.0		65,026	0	21,976	56,483	143,485	136,311
25-2162	Maint & OPS Spr	FT	A	SS	Nome	237	21K	12.0		141,565	0	0	83,600	225,165	180,132
25-2164	E/Op Jrny 3	FT	A	LL	Valdez	2FF	52E / F	12.0		70,613	0	20,176	58,103	148,892	104,224
25-2165	E/Op Jrny 3	FT	A	LL	Valdez	2FF	52P / Q	12.0		92,099	0	21,749	67,965	181,813	127,269
25-2167	Rural Airport Foreman	FT	A	LL	Valdez	2FF	49B / C	12.0		74,749	0	20,416	59,975	155,140	147,383
25-2168	E/Op Jrny 3	FT	A	LL	Valdez	2FF	52M	12.0		82,019	0	21,100	63,377	166,496	158,171
25-2169	E/Op Jrny 3	FT	A	LL	Cordova	2EE	52A / B	12.0		61,177	0	19,508	53,782	134,467	127,744
25-2170	Equipment Operator Foreman 1	FT	A	LL	Thompson Pass	2FF	51J	12.0		77,943	0	20,806	61,508	160,257	96,154
25-2171	Equipment Operator, Journey 2	PT	A	LL	Slana	2FF	53C	8.0		40,635	0	3,297	31,638	75,570	22,671
25-2172	E/Op Jrny 3	PT	A	LL	Valdez	2FF	52A / B	6.0		30,711	0	16,075	29,647	76,433	53,503
25-2173	Equipment Operator, Journey 2	PT	A	LL	Thompson Pass	2FF	53B / C	8.0		39,926	0	12,539	35,288	87,753	26,326
25-2174	E/Op Jrny 3	FT	A	LL	Ernestine	2FF	52Q	12.0		94,247	0	6,798	62,490	163,535	81,768
25-2175	Equipment Operator, Journey 2	PT	A	LL	Thompson Pass	2FF	53A / B	8.0		39,191	0	12,440	34,931	86,562	51,937
25-2176	Equipment Operator, Journey 1	FT	A	LL	Chitina	2FF	54E / F	12.0		61,504	0	4,422	47,469	113,395	0
25-2177	Equipment Operator, Journey 2	FT	A	LL	Slana	2FF	53E / F	12.0		66,346	0	4,684	49,652	120,682	0
25-2178	Equipment Operator, Journey 2	FT	A	LL	Ernestine	2FF	53C / D	12.0		61,425	0	4,396	47,424	113,245	0
25-2179	Equipment Operator Foreman 1	FT	A	LL	Tazlina	2FF	51R	12.0		102,961	0	7,426	66,485	176,872	88,436
25-2180	Equipment Operator, Journey 2	FT	A	LL	Tazlina	2FF	53N / O	12.0		80,894	0	5,742	56,327	142,963	71,482
25-2181	Equipment Operator, Journey 2	FT	A	LL	Tazlina	2FF	53F	12.0		67,046	0	4,836	50,017	121,899	48,760
25-2182	Equipment Operator, Journey 2	FT	A	LL	Tazlina	2FF	53J	12.0		69,375	0	5,004	51,084	125,463	50,185
25-2183	Equipment Operator,	FT	A	LL	Tazlina	2FF	54D / E	12.0		61,147	0	4,284	47,257	112,688	67,613

Note: If a position is split, an asterisk (*) will appear in the Split/Count column. If the split position is also counted in the component, two asterisks (**) will appear in this column.
 [No valid job title] appearing in the Job Class Title indicates that the PCN has an invalid class code or invalid range for the class code effective date of this scenario.

Personal Services Expenditure Detail
Department of Transportation and Public Facilities

Scenario: FY2025 Governor (20959)
Component: Northern Region Highways and Aviation (2068)
RDU: Highways, Aviation and Facilities (408)

PCN	Job Class Title	Time Status	Retire Code	Barg Unit	Location	Salary Sched	Range / Step	Comp Months	Split / Count	Annual Salaries	COLA	Premium Pay	Annual Benefits	Total Costs	UGF Amount
25-2184	Journey 1 Equipment Operator, Journey 2	PT	A	LL	Thompson Pass	2FF	53F	8.0		44,698	0	12,971	37,513	95,182	0
25-2185	Equipment Operator, Journey 2	FT	A	LL	Tazlina	2FF	53J	12.0		69,375	0	5,004	51,084	125,463	62,732
25-2186	Equipment Operator, Journey 2	FT	A	LL	Tazlina	2FF	53F / J	12.0		67,143	0	4,836	50,058	122,037	0
25-2187	Equipment Operator, Journey 2	PT	A	LL	Thompson Pass	2FF	53C	8.0		40,635	0	12,641	35,635	88,911	0
25-2188	E/Op Jrny 3	FT	A	LL	Paxson	2FF	52J / K	12.0		76,225	0	5,334	54,155	135,714	67,857
25-2189	Equipment Operator, Journey 2	PT	A	LL	Ernestine	2FF	53A / B	8.0		38,687	0	3,096	30,719	72,502	0
25-2190	Equipment Operator, Journey 2	FT	A	LL	Paxson	2FF	53C / D	12.0		61,523	0	4,396	47,466	113,385	56,693
25-2191	Equipment Operator, Journey 2	FT	A	LL	Nelchina	2FF	53Q	12.0		88,341	0	6,372	59,781	154,494	77,247
25-2192	Equipment Operator, Journey 2	FT	A	LL	Tazlina	2FF	53F / J	12.0		69,375	0	5,004	51,084	125,463	62,732
25-2193	E/Op Jrny 3	FT	A	LL	Nelchina	2FF	52M	12.0		82,019	0	5,916	56,882	144,817	86,890
25-2194	Equipment Operator, Journey 2	FT	A	LL	Paxson	2FF	53C / D	12.0		61,083	0	4,396	47,278	112,757	56,379
25-2195	Equipment Operator, Journey 2	FT	A	LL	Nelchina	2FF	53C	12.0		60,953	0	4,396	47,222	112,571	56,286
25-2196	E/Op Jrny 3	FT	A	LL	Slana	2FF	52F	12.0		71,455	0	5,154	52,038	128,647	0
25-2197	Equipment Operator, Journey 2	FT	A	LL	Nelchina	2FF	53E / F	12.0		66,521	0	4,684	49,727	120,932	72,559
25-2198	Equipment Operator, Journey 2	PT	A	LL	Tazlina	2FF	53B / C	8.0		39,468	0	3,195	31,095	73,758	29,503
25-2199	Equipment Operator, Journey 2	FT	A	LL	Delta Junction	2FF	53L / M	12.0		74,846	0	5,359	53,576	133,781	107,025
25-2201	Equipment Operator, Journey 2	FT	A	LL	Chitina	2FF	53L	12.0		74,304	0	0	51,052	125,356	75,214
25-2203	Equipment Operator, Journey 2	FT	A	LL	Cordova	2EE	53A / B	12.0		57,397	0	19,241	52,051	128,689	115,820
25-2204	E/Op Subjrny 2	PT	A	LL	Tazlina	2FF	56L	8.0		41,883	0	3,398	32,215	77,496	27,124
25-2205	S&E Spt Spec	PT	A	GP	Thompson Pass	200	17A / B	8.0		40,057	3,770	12,753	35,301	91,881	0
25-2206	E/Op Subjrny 2	FT	A	LL	Sag River	2JJ	56A / B	12.0		53,096	0	21,480	51,169	125,745	25,149
25-2208	Equipment Operator,	PT	A	LL	Paxson	2FF	53A / B	8.0		38,611	0	3,096	30,686	72,393	0

Note: If a position is split, an asterisk (*) will appear in the Split/Count column. If the split position is also counted in the component, two asterisks (**) will appear in this column.
 [No valid job title] appearing in the Job Class Title indicates that the PCN has an invalid class code or invalid range for the class code effective date of this scenario.

Personal Services Expenditure Detail
Department of Transportation and Public Facilities

Scenario: FY2025 Governor (20959)
Component: Northern Region Highways and Aviation (2068)
RDU: Highways, Aviation and Facilities (408)

PCN	Job Class Title	Time Status	Retire Code	Barg Unit	Location	Salary Sched	Range / Step	Comp Months	Split / Count	Annual Salaries	COLA	Premium Pay	Annual Benefits	Total Costs	UGF Amount
25-2209	Journey 2 Equipment Operator, Journey 2	PT	A	LL	Ernestine	2FF	53K / L	8.0		48,844	0	3,883	35,400	88,127	39,657
25-2210	Equipment Operator, Journey 2	PT	A	LL	Valdez	2FF	53A / B	8.0		38,687	0	15,808	36,156	90,651	63,456
25-2211	Equipment Operator, Journey 2	PT	A	LL	Slana	2FF	53D	8.0		41,939	0	3,403	32,241	77,583	46,550
25-2213	E/Op Subjrnly 1	PT	A	LL	Tazlina	2FF	58D	8.0		32,164	0	2,610	27,721	62,495	21,873
25-2214	E/Op Subjrnly 1	PT	A	LL	Tazlina	2FF	58B	8.0		30,224	0	2,452	26,824	59,500	20,825
25-2215	Equipment Operator, Journey 2	PT	A	LL	Slana	2FF	53E	8.0		43,297	0	3,513	32,869	79,679	0
25-2216	E/Op Subjrnly 1	PT	A	LL	Slana	2FF	58B / C	8.0		30,678	0	2,452	27,018	60,148	0
25-2219	Equipment Operator, Journey 2	PT	A	LL	Valdez	2FF	53A / B	8.0		38,611	0	15,808	36,123	90,542	0
25-2220	Equipment Operator, Journey 2	PT	A	LL	Thompson Pass	2FF	53C / D	8.0		40,668	0	12,641	35,649	88,958	0
25-2221	Equipment Operator, Journey 2	PT	A	LL	Thompson Pass	2FF	53L	8.0		49,536	0	13,363	39,750	102,649	0
25-2222	Equipment Operator, Journey 2	FT	A	LL	Valdez	2FF	53A / B	12.0		58,298	0	19,312	52,466	130,076	0
25-2232	Administrative Assistant 3	FT	A	GP	Valdez	211	15G	12.0		70,610	5,234	2,715	50,432	128,991	111,503
25-2241	Maint & OPS Spr	FT	A	SS	Tazlina	200	21L	12.0		106,683	0	0	68,681	175,364	140,291
25-2242	Administrative Assistant 1	FT	A	GP	Valdez	211	12C / D	12.0		50,319	3,729	1,923	41,415	97,386	58,432
25-2243	Administrative Assistant 2	FT	A	GP	Fairbanks	203	14E / F	12.0		57,234	4,242	2,187	44,485	108,148	93,069
25-2244	Administrative Assistant 3	FT	A	GP	Tazlina	200	15K	12.0		68,348	4,879	0	48,303	121,530	85,071
25-2245	Maint & OPS Spr	FT	A	SS	Valdez	211	21N / O	12.0		127,748	0	0	77,690	205,438	164,350
25-3356	E/Op Jrny 3	FT	A	LL	Utqiagvik	2JJ	52Q	12.0		92,060	0	10,622	63,190	165,872	157,578
25-3385	Maint & OPS Spr	FT	A	SS	Fairbanks	2S4	21K	12.0		110,053	0	0	70,122	180,175	144,140
25-3428	E/Op Jrny 3	FT	A	LL	Trimms Camp	2FF	52K	12.0		76,550	0	5,521	54,374	136,445	68,223
25-3437	Equipment Operator, Journey 2	FT	A	LL	Fairbanks	2EE	53J	12.0		68,398	0	4,933	50,636	123,967	49,587
25-3488	Administrative Assistant 1	FT	A	GP	Fairbanks	203	12J / K	12.0		56,511	4,185	2,121	44,148	106,965	106,965
25-3489	Administrative Assistant 1	FT	A	GP	Tok	200	12B / C	12.0		44,035	3,263	1,677	38,622	87,597	52,558
25-3490	Administrative Assistant 1	FT	A	GP	Tazlina	200	12C / D	12.0		45,645	3,258	0	38,593	87,496	52,498
25-3523	Equipment Operator, Journey 2	PT	A	LL	Tok	2FF	53D / E	11.5		61,391	0	4,537	46,667	112,595	0
25-3554	E/Op Jrny 3	FT	A	LL	Fairbanks	2EE	52K / L	12.0		75,908	0	5,451	54,070	135,429	0
25-3610	Equipment Operator,	PT	A	LL	Cantwell	2HH	53B	8.0		40,691	0	3,301	31,664	75,656	0

Note: If a position is split, an asterisk (*) will appear in the Split/Count column. If the split position is also counted in the component, two asterisks (**) will appear in this column. [No valid job title] appearing in the Job Class Title indicates that the PCN has an invalid class code or invalid range for the class code effective date of this scenario.

Personal Services Expenditure Detail
Department of Transportation and Public Facilities

Scenario: FY2025 Governor (20959)
Component: Northern Region Highways and Aviation (2068)
RDU: Highways, Aviation and Facilities (408)

PCN	Job Class Title	Time Status	Retire Code	Barg Unit	Location	Salary Sched	Range / Step	Comp Months	Split / Count	Annual Salaries	COLA	Premium Pay	Annual Benefits	Total Costs	UGF Amount
	Journey 2														
25-3655	E/Op Jrny 3	FT	A	LL	Kotzebue	2JJ	52P	12.0		94,955	0	24,217	70,242	189,414	179,943
25-3656	E/Op Jrny 3	FT	A	LL	Kotzebue	2JJ	52A / B	12.0		66,003	0	22,046	56,931	144,980	137,731
25-3657	E/Op Jrny 3	FT	A	LL	Nome	2II	52K	12.0		79,503	0	23,102	63,157	165,762	157,474
25-3658	E/Op Jrny 3	FT	A	LL	Kotzebue	2JJ	52A / B	12.0		66,003	0	22,046	56,931	144,980	137,731
25-3660	Equipment Operator Foreman 2	FT	A	LL	Utqiagvik	2JJ	50N / O	12.0		99,114	0	10,590	66,193	175,897	167,102
25-3661	Equipment Operator Foreman 1	FT	A	LL	Dalton Highway	2JJ	51N / O	12.0		90,983	0	33,923	72,695	197,601	98,801
25-3662	Equipment Operator, Journey 2	FT	A	LL	Dalton Highway	2JJ	53M / N	12.0		81,285	0	29,643	66,717	177,645	88,823
25-3663	Equipment Operator, Journey 2	FT	A	LL	Fairbanks	2EE	53O / P	12.0		83,135	0	5,874	57,342	146,351	0
25-3664	Equipment Operator, Journey 2	FT	A	LL	Chandalar (Chandler) Camp	2JJ	53K / L	12.0		76,767	0	29,764	64,836	171,367	137,094
25-3665	Rural Airport Foreman	FT	A	LL	Utqiagvik	2JJ	49N / O	12.0		103,585	0	11,049	68,302	182,936	173,789
25-3668	Equipment Operator, Journey 2	FT	A	LL	Coldfoot Camp	2JJ	53E / F	12.0		70,049	0	28,034	61,223	159,306	111,514
25-3669	Equipment Operator, Journey 2	FT	A	LL	Livengood	2HH	53A / B	12.0		60,274	0	28,096	57,068	145,438	14,544
25-3670	E/Op Jrny 3	FT	A	LL	Deadhorse	2JJ	52M / N	12.0		86,070	0	32,318	69,907	188,295	169,466
25-3671	Equipment Operator Foreman 2	FT	A	LL	Deadhorse	2JJ	50L / M	12.0		92,856	0	35,952	74,364	203,172	132,220
25-3672	Equipment Operator, Journey 2	FT	A	LL	Dalton Highway	2JJ	53L	12.0		73,327	0	29,505	63,254	166,086	83,043
25-3673	Equipment Operator, Journey 2	FT	A	LL	Montana Creek	2EE	53A / B	12.0		57,321	0	4,057	45,524	106,902	42,761
25-3674	Equipment Operator, Journey 2	FT	A	LL	Northway	2FF	53K	12.0		71,788	0	5,178	52,191	129,157	0
25-3675	Equipment Operator, Journey 1	FT	A	LL	Montana Creek	2EE	54E / F	12.0		63,677	0	9,129	50,412	123,218	61,725
25-3676	Equipment Operator Foreman 1	FT	A	LL	Central	2FF	51P	12.0		96,015	0	6,925	63,300	166,240	41,560
25-3715	Environmental Impact Analyst 3	FT	A	GP	Fairbanks	203	19C / D	12.0		77,124	5,917	5,767	54,523	143,331	0
25-3864	E/Op Jrny 3	FT	A	LL	Birch Lake	2EE	52L	12.0		78,255	0	5,644	55,156	139,055	134,883
25-3865	Equipment Operator, Journey 2	FT	A	LL	Birch Lake	2EE	53A / B	12.0		57,321	0	4,057	45,524	106,902	103,695

Note: If a position is split, an asterisk (*) will appear in the Split/Count column. If the split position is also counted in the component, two asterisks (**) will appear in this column. [No valid job title] appearing in the Job Class Title indicates that the PCN has an invalid class code or invalid range for the class code effective date of this scenario.

Personal Services Expenditure Detail
Department of Transportation and Public Facilities

Scenario: FY2025 Governor (20959)
Component: Northern Region Highways and Aviation (2068)
RDU: Highways, Aviation and Facilities (408)

PCN	Job Class Title	Time Status	Retire Code	Barg Unit	Location	Salary Sched	Range / Step	Comp Months	Split / Count	Annual Salaries	COLA	Premium Pay	Annual Benefits	Total Costs	UGF Amount
25-3866	E/Op Jrny 3	FT	A	LL	Chitina	2FF	52O	12.0		87,905	0	12,681	62,293	162,879	157,993
25-3867	Equipment Operator, Journey 2	FT	A	LL	Chitina	2FF	53E / F	12.0		66,434	0	9,369	51,694	127,497	117,542
25-N09040	E/Op Subjrny 1	NP	N	LL	Fairbanks	2EE	58A	5.0		17,937	0	3,105	2,883	23,925	0
25-N09041	E/Op Subjrny 1	NP	N	LL	Fairbanks	2EE	58A	5.0		17,937	0	3,105	2,883	23,925	0
25-N09042	E/Op Subjrny 1	NP	N	LL	Fairbanks	2EE	58A	5.0		17,937	0	3,105	2,883	23,925	0
25-N09043	E/Op Subjrny 1	NP	N	LL	Fairbanks	2EE	58A	5.0		17,937	0	3,105	2,883	23,925	0
25-N09044	E/Op Subjrny 1	NP	N	LL	Fairbanks	2EE	58A	5.0		17,937	0	3,105	2,883	23,925	0
25-N09047	E/Op Subjrny 1	NP	N	LL	Tazlina	2FF	58A	6.0		21,981	0	3,171	3,446	28,598	0
25-N09048	E/Op Subjrny 1	NP	N	LL	Tazlina	2FF	58A	6.0		21,981	0	2,378	3,337	27,696	0
25-N09049	E/Op Subjrny 1	NP	N	LL	Tazlina	2FF	58A	6.0		21,981	0	3,171	3,446	28,598	0
25-N09050	E/Op Subjrny 1	NP	N	LL	Tazlina	2FF	58A	6.0		21,981	0	3,171	3,446	28,598	0
25-N09051	E/Op Subjrny 1	NP	N	LL	Tazlina	2FF	58A	6.0		21,981	0	3,171	3,446	28,598	0
25-N09052	E/Op Subjrny 1	NP	N	LL	Tazlina	2FF	58A	6.0		21,981	0	3,171	3,446	28,598	0
25-N11047	E/Op Subjrny 2	NP	N	LL	Dalton	2JJ	56A	5.0		21,749	0	5,647	3,753	31,149	0
25-N11048	E/Op Subjrny 2	NP	N	LL	Dalton Highway	2JJ	56A	5.0		21,749	0	5,647	3,753	31,149	0
25-N11049	E/Op Subjrny 2	NP	N	LL	Dalton Highway	2JJ	56A	5.0		21,749	0	5,647	3,753	31,149	0
25-N11050	E/Op Subjrny 2	NP	N	LL	Dalton Highway	2JJ	56A	5.0		21,749	0	5,647	3,753	31,149	0
25-N11064	E/Op Subjrny 2	NP	N	LL	Dalton Highway	2JJ	56A	5.0		21,749	0	5,647	3,753	31,149	0
25-N11065	E/Op Subjrny 2	NP	N	LL	Dalton Highway	2JJ	56A	5.0		21,749	0	5,647	3,753	31,149	0
25-N11066	E/Op Subjrny 2	NP	N	LL	Dalton Highway	2JJ	56A	5.0		21,749	0	5,647	3,753	31,149	0
25-N11067	E/Op Subjrny 2	NP	N	LL	Dalton Highway	2JJ	56A	5.0		21,749	0	5,647	3,753	31,149	0
25-N16168	E/Op Subjrny 1	NP	N	LL	Healy	2HH	58A	5.0		19,089	0	3,304	3,068	25,461	0

Note: If a position is split, an asterisk (*) will appear in the Split/Count column. If the split position is also counted in the component, two asterisks (**) will appear in this column. [No valid job title] appearing in the Job Class Title indicates that the PCN has an invalid class code or invalid range for the class code effective date of this scenario.

Personal Services Expenditure Detail
Department of Transportation and Public Facilities

Scenario: FY2025 Governor (20959)
Component: Northern Region Highways and Aviation (2068)
RDU: Highways, Aviation and Facilities (408)

PCN	Job Class Title	Time Status	Retire Code	Barg Unit	Location	Salary Sched	Range / Step	Comp Months	Split / Count	Annual Salaries	COLA	Premium Pay	Annual Benefits	Total Costs	UGF Amount
	Total Positions		New	Deleted										Total Salary Costs:	21,788,186
														Total COLA:	151,442
	Full Time Positions:	256	0	0										Total Premium Pay:	3,804,329
	Part Time Positions:	51	0	0										Total Benefits:	16,464,611
	Non Permanent Positions:	20	0	0											
	Positions in Component:	327	0	0											
	Total Component Months:	3,610.0													
														Total Pre-Vacancy:	42,208,568
														Minus Vacancy Adjustment of 4.98%:	(2,103,368)
														Total Post-Vacancy:	40,105,200
														Plus Lump Sum Premium Pay:	0
														Personal Services Line 100:	40,105,200

PCN Funding Sources:	Pre-Vacancy	Post-Vacancy	Percent
1002 Federal Receipts	8,681	8,248	0.02%
1004 Unrestricted General Fund Receipts	21,765,496	20,680,862	51.57%
1005 General Fund/Program Receipts	202,561	192,467	0.48%
1007 Interagency Receipts	103,110	97,972	0.24%
1027 International Airports Revenue Fund	64,310	61,105	0.15%
1039 Unallocated Indirect Cost Recovery	1,258,431	1,195,720	2.98%
1061 Capital Improvement Project Receipts	7,636,750	7,256,189	18.09%
1108 Statutory Designated Program Receipts	78,236	74,338	0.19%
1200 Vehicle Rental Tax Receipts	169,244	160,810	0.40%
1239 Aviation Fuel Tax Account	472,714	449,157	1.12%
1244 Rural Airport Receipts	344,743	327,564	0.82%
1249 Motor Fuel Tax Receipts	10,104,293	9,600,768	23.94%
Total PCN Funding:	42,208,568	40,105,200	100.00%

Note: If a position is split, an asterisk (*) will appear in the Split/Count column. If the split position is also counted in the component, two asterisks (**) will appear in this column. [No valid job title] appearing in the Job Class Title indicates that the PCN has an invalid class code or invalid range for the class code effective date of this scenario.

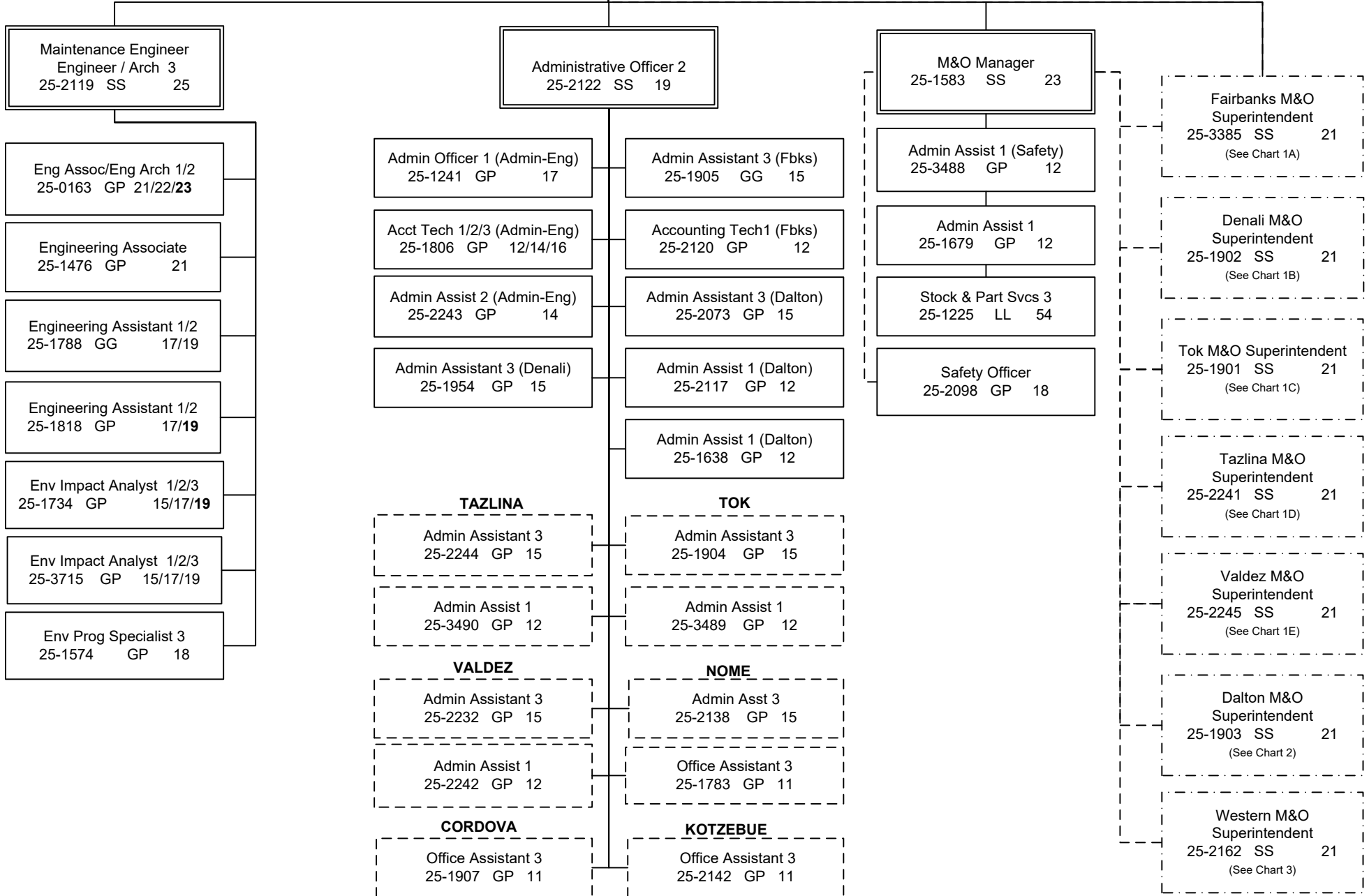
**FY2025 Governor's Budget
HIGHWAYS, AVIATION AND FACILITIES (408)
NORTHERN REGION HIGHWAYS & AVIATION (2068)
ADMINISTRATION/ENGINEERING, CHART 1**

*All PCNs on this page are PFT unless otherwise indicated
**(s) designates PPT/seasonal

NORTHERN REGION HIGHWAYS & AVIATION	
Positions	Total
Full-Time	256
Seasonal	51
Non-Perm	20
Total	327

M&O Chief
Eng/Arch 4
25-1914 SS 26

**FAIRBANKS
(JBA)**



**FY2025 Governor's Budget
HIGHWAYS, AVIATION AND FACILITIES (408)
NORTHERN REGION HIGHWAYS & AVIATION (2068)
FAIRBANKS DISTRICT, CHART 1A**

KEY:
F1 – Foremen 1
F2 – Foremen 2
J1 – Journey 1
J2 – Journey 2
J3/L – Journey 3/Lead
SJ1 – Sub-Journey 1
SJ2 – Sub-Journey 2
L – Lead
S – PPT/SACL

Eng/Arch 4
25-1914 SS 26

Fairbanks M&O Superintendent
25-3385 SS 21

Equipment Operator (F2)
25-1919 LL 50

Admin Assistant 3
25-1905 GG 15

Accounting Tech 1
25-2120 GP 12

**MONTANA CREEK
(JME)**

Equipment Operator (J1/J2)
25-1934 LL 54/53

Equipment Operator (J1/J2)
25-1964 LL 54/53

Equipment Operator (J1/J2)
25-2049 LL 54/53

Equipment Operator (J1/J2)
25-3673 LL 54/53

Equipment Operator (J1/J2)
25-3675 LL 54/53

**CENTRAL
(JMB)**

Equipment Operator (F1)
25-3676 LL 51

**BIRCH LAKE
(JJD)**

Equipment Operator (J3/L)
25-3864 LL 52

Equipment Operator (J1/J2)
25-3865 LL 54/53

Equipment Operator (J2)
25-1948 LL 53

**FAIRBANKS
(JBA)**

Equipment Operator (F1)
25-1927 LL 51

Equipment Operator (F1)
25-1920 LL 51

Equipment Operator (F1)
25-1929 LL 51

Equipment Operator (F1)
25-1915 LL 51

Equipment Operator (SJ1)
25-1940(s) LL 58

Equipment Operator (J2)
25-1458 LL 53

Equipment Operator (J2)
25-1931 LL 53

Equipment Operator (J2)
25-1924 LL 53

Equipment Operator (J2)
25-1926 LL 53

Equipment Operator (SJ1)
25-2074(s) LL 58

Equipment Operator (J2)
25-1917 LL 53

Equipment Operator (J2)
25-1941 LL 53

Equipment Operator (J2)
25-1935 LL 53

Equipment Operator (J2)
25-1937 LL 53

Equipment Operator (SJ1)
25-N09042 LL 58

Equipment Operator (J2)
25-1930 LL 53

Equipment Operator (J2)
25-1943 LL 53

Equipment Operator (J2)
25-1989 LL 53

Equipment Operator (J2)
25-1979 LL 53

Equipment Operator (SJ1)
25-N09043 LL 58

Equipment Operator (J2)
25-2071 LL 53

Equipment Operator (J2)
25-1986 LL 53

Equipment Operator (J2)
25-1936 LL 53

Equipment Operator (J2)
25-3663 LL 53

Equipment Operator (SJI)
25-N09044 LL 58

Equipment Operator (J1)
25-1933 LL 54

Equipment Operator (J2)
25-3437 LL 53

Equipment Operator (J1)
25-1928 LL 54

Equipment Operator (J2)
25-N21010 LL 53

TRAFFIC
Maint Spec TCES(F1)
25-2075 LL 50

Equipment Operator (J1)
25-1562 LL 54

Equipment Operator (J1)
25-2022 LL 54

Equipment Operator (J1)
25-1918 LL 54

Equipment Operator (J1)
25-1944 LL 54

Maint Spec TCES (J2)
25-1916 LL 51

Equipment Operator (J1)
25-2077 LL 54

Equip Operator (SJ2/J1)
25-2017 LL 56/54

Equipment Operator (J1)
25-1946 LL 54

Equipment Operator (J1)
25-2072 LL 54

Maint Spec TCES (J2)
25-1968 LL 51

Equipment Operator (J1)
25-2081 LL 54

Equipment Operator (J1)
25-1996 LL 54

Equipment Operator (J1)
25-2079 LL 54

SIGNS
Equipment Operator (J2)
25-1670 LL 53

Equip Operator (SJ2/J1)
25-1681 LL 56/54

Equipment Operator (J1)
25-1973(s) LL 54

Equipment Operator (J2)
25-2088 LL 53

*All PCNs are PFT unless otherwise designated

** (s) Designates PPT/seasonal position

All positions are located in Fairbanks unless otherwise indicated

**FY2025 Governor's Budget
HIGHWAYS, AVIATION AND FACILITIES (408)
NORTHERN REGION HIGHWAYS & AVIATION (2068)
DENALI DISTRICT, CHART 1B**

**FAIRBANKS
(JBA)**

Eng/Arch 4
25-1914 SS 26

Denali M&O Superintendent
25-1902 SS 21

Admin Assistant 3
25-1954 GP 15

**CANTWELL
(HJI)**

Equipment Operator (F1)
25-1952 LL 51

Equipment Operator (J1/J2)
25-1921 LL 54/53

Equipment Operator (J1/J2)
25-1991 LL 54/53

Equipment Operator (J1/J2)
25-1999 LL 54/53

Equipment Operator (J1/J2)
25-2000 LL 54/53

Equipment Operator (J1/J2)
25-2001 LL 54/53

Equipment Operator (J2)
25-2025(s) LL 53

Equipment Operator (J2)
25-3610(s) LL 53

Equipment Operator (SJ1)
25-1706(s) LL 58

**HEALY
(HJA)**

Equipment Operator (J3/L)
25-1995 LL 52

Equipment Operator (J2)
25-1997 LL 53

Equipment Operator (J2)
25-1998(s) LL 53

Equipment Operator (J1)
25-1961(s) LL 54

Equipment Operator (SJ1)
25-N16168 LL 58

**NENANA
(JBM)**

Equipment Operator (J3/L)
25-1990 LL 52

Equipment Operator (J1/J2)
25-1955 LL 54/53

Equipment Operator (J1/J2)
25-1993 LL 54/53

Equipment Operator (J1/J2)
25-2087 LL 54/53

Equipment Operator (J1)
25-1942(s) LL 54

Equipment Operator (SJ2)
25-2018(s) LL 56

**NR BRIDGE CREW -
FAIRBANKS
(JBA)**

Maint Specialist Foreman
25-1932 LL 50

Equipment Operator (SJ1)
25-N09041 LL 58

Equipment Operator (SJ1)
25-N09040 LL 58

**RURAL AVIATION - Z269
FAIRBANKS
(JBA)**

Equipment Operator Lead (J3/L)
25-3554 LL 52

**GALENA
(HYC)**

Equipment Operator (F1)
25-1908 LL 51

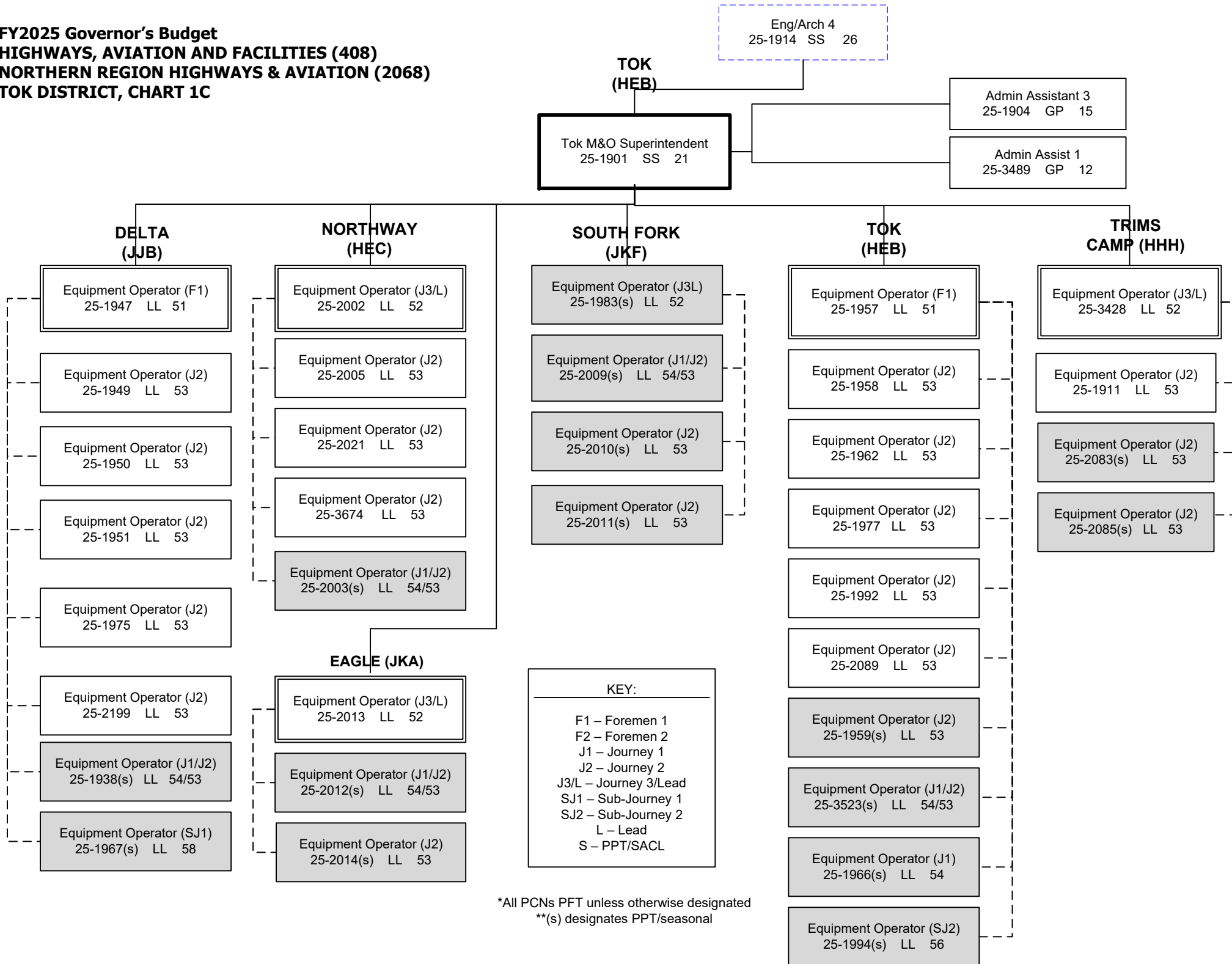
Equipment Operator (J2)
25-1909 LL 53

KEY:

- F1 – Foremen 1
- F2 – Foremen 2
- J1 – Journey 1
- J2 – Journey 2
- J3/L – Journey 3/Lead
- SJ1 – Sub-Journey 1
- SJ2 – Sub-Journey 2
- L – Lead
- S – PPT/SACL

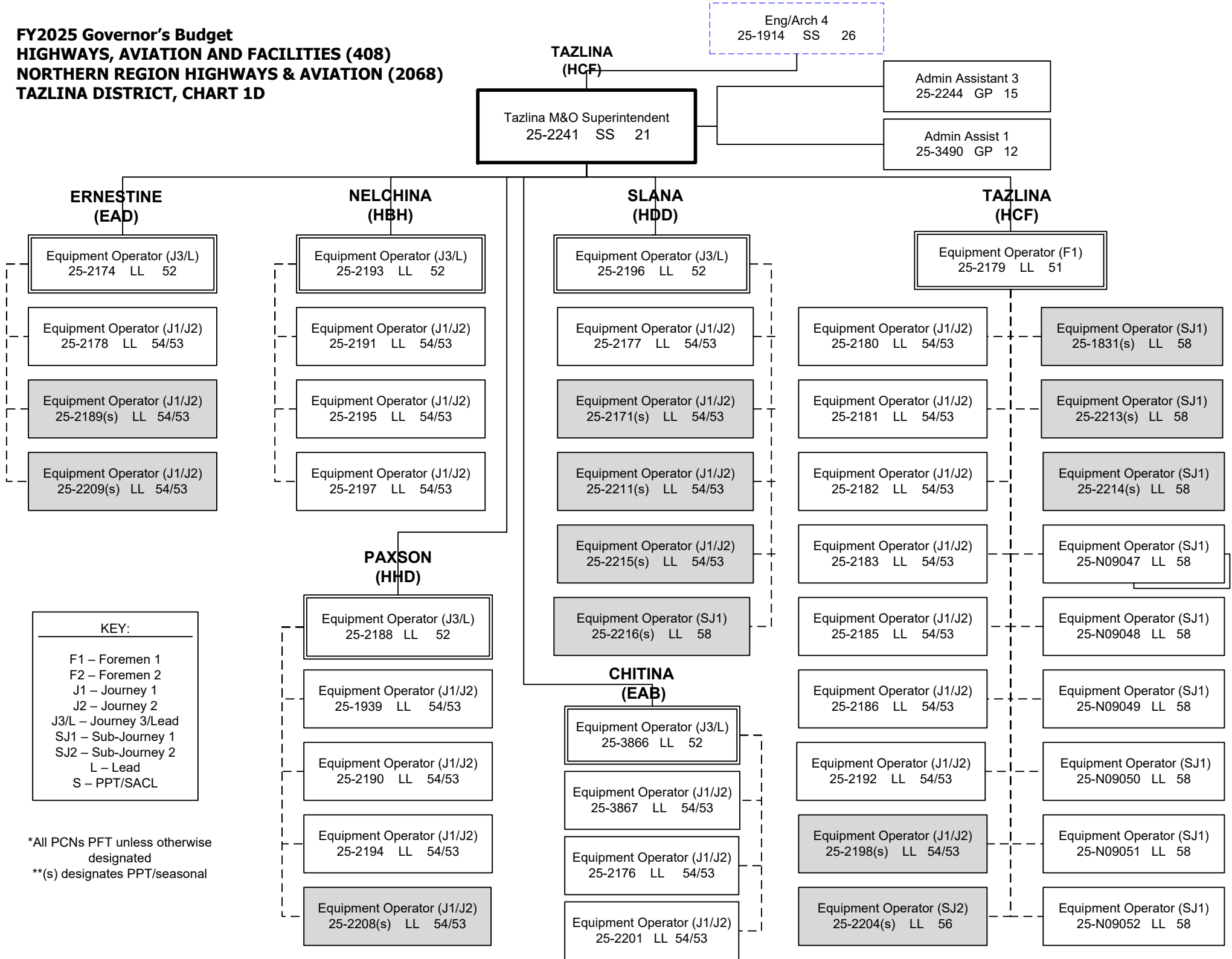
*All PCNs PFT unless otherwise designated
**(s) designates PPT/seasonal

**FY2025 Governor's Budget
HIGHWAYS, AVIATION AND FACILITIES (408)
NORTHERN REGION HIGHWAYS & AVIATION (2068)
TOK DISTRICT, CHART 1C**



*All PCNs PFT unless otherwise designated
**(s) designates PPT/seasonal

**FY2025 Governor's Budget
HIGHWAYS, AVIATION AND FACILITIES (408)
NORTHERN REGION HIGHWAYS & AVIATION (2068)
TAZLINA DISTRICT, CHART 1D**



TAZLINA (HCF)
Tazlina M&O Superintendent
25-2241 SS 21

Eng/Arch 4
25-1914 SS 26

Admin Assistant 3
25-2244 GP 15

Admin Assist 1
25-3490 GP 12

ERNESTINE (EAD)

- Equipment Operator (J3/L)
25-2174 LL 52
- Equipment Operator (J1/J2)
25-2178 LL 54/53
- Equipment Operator (J1/J2)
25-2189(s) LL 54/53
- Equipment Operator (J1/J2)
25-2209(s) LL 54/53

NELCHINA (HBH)

- Equipment Operator (J3/L)
25-2193 LL 52
- Equipment Operator (J1/J2)
25-2191 LL 54/53
- Equipment Operator (J1/J2)
25-2195 LL 54/53
- Equipment Operator (J1/J2)
25-2197 LL 54/53

SLANA (HDD)

- Equipment Operator (J3/L)
25-2196 LL 52
- Equipment Operator (J1/J2)
25-2177 LL 54/53
- Equipment Operator (J1/J2)
25-2171(s) LL 54/53
- Equipment Operator (J1/J2)
25-2211(s) LL 54/53
- Equipment Operator (J1/J2)
25-2215(s) LL 54/53
- Equipment Operator (SJ1)
25-2216(s) LL 58

TAZLINA (HCF)

Equipment Operator (F1)
25-2179 LL 51

- Equipment Operator (J1/J2)
25-2180 LL 54/53
- Equipment Operator (J1/J2)
25-2181 LL 54/53
- Equipment Operator (J1/J2)
25-2182 LL 54/53
- Equipment Operator (J1/J2)
25-2183 LL 54/53
- Equipment Operator (J1/J2)
25-2185 LL 54/53
- Equipment Operator (J1/J2)
25-2186 LL 54/53
- Equipment Operator (J1/J2)
25-2192 LL 54/53
- Equipment Operator (J1/J2)
25-2198(s) LL 54/53
- Equipment Operator (SJ2)
25-2204(s) LL 56
- Equipment Operator (SJ1)
25-1831(s) LL 58
- Equipment Operator (SJ1)
25-2213(s) LL 58
- Equipment Operator (SJ1)
25-2214(s) LL 58
- Equipment Operator (SJ1)
25-N09047 LL 58
- Equipment Operator (SJ1)
25-N09048 LL 58
- Equipment Operator (SJ1)
25-N09049 LL 58
- Equipment Operator (SJ1)
25-N09050 LL 58
- Equipment Operator (SJ1)
25-N09051 LL 58
- Equipment Operator (SJ1)
25-N09052 LL 58

PAXSON (HHD)

- Equipment Operator (J3/L)
25-2188 LL 52
- Equipment Operator (J1/J2)
25-1939 LL 54/53
- Equipment Operator (J1/J2)
25-2190 LL 54/53
- Equipment Operator (J1/J2)
25-2194 LL 54/53
- Equipment Operator (J1/J2)
25-2208(s) LL 54/53

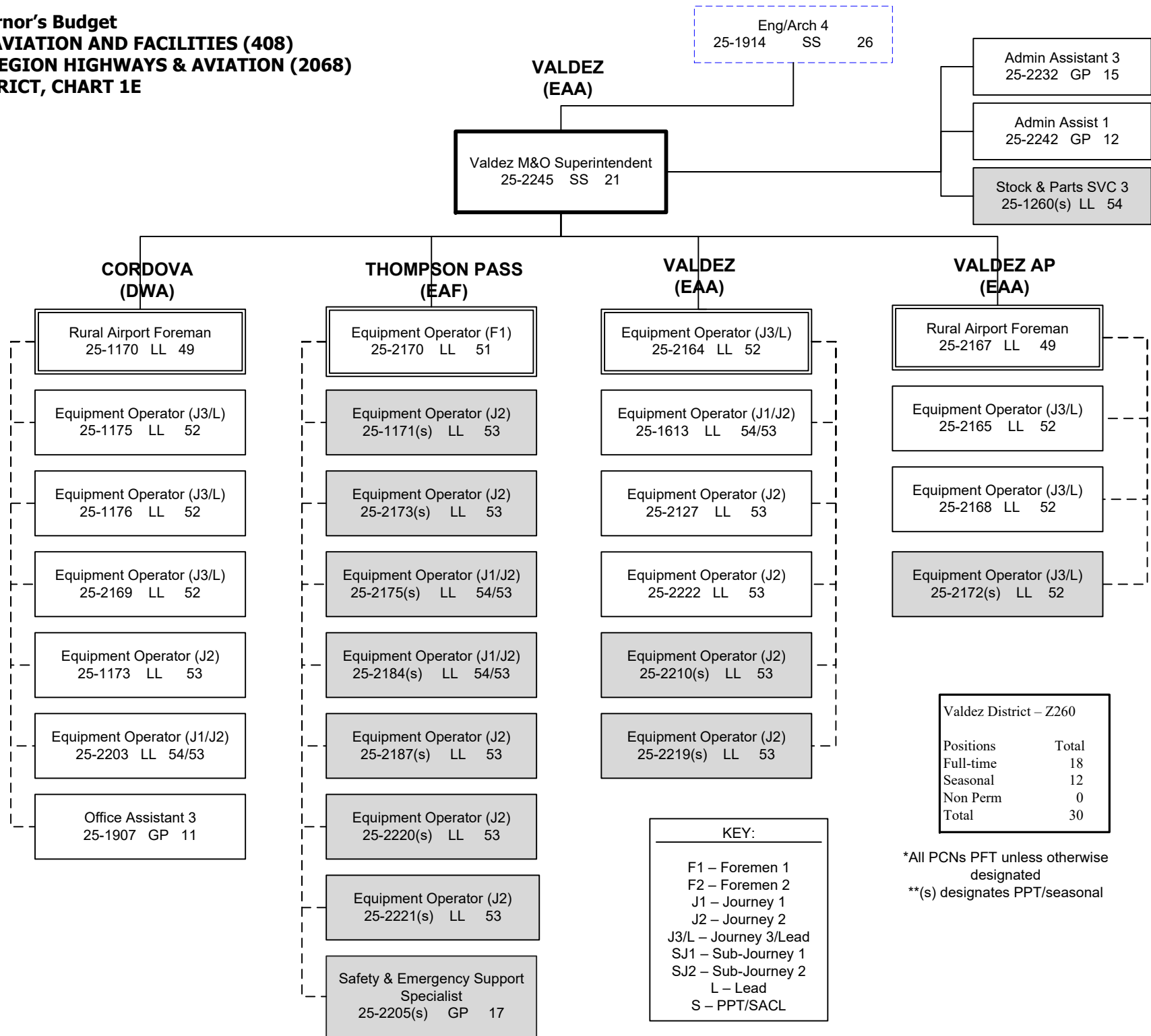
CHITINA (EAB)

- Equipment Operator (J3/L)
25-3866 LL 52
- Equipment Operator (J1/J2)
25-3867 LL 54/53
- Equipment Operator (J1/J2)
25-2176 LL 54/53
- Equipment Operator (J1/J2)
25-2201 LL 54/53

KEY:
F1 – Foremen 1
F2 – Foremen 2
J1 – Journey 1
J2 – Journey 2
J3/L – Journey 3/Lead
SJ1 – Sub-Journey 1
SJ2 – Sub-Journey 2
L – Lead
S – PPT/SACL

*All PCNs PFT unless otherwise designated
**(s) designates PPT/seasonal

**FY2025 Governor's Budget
HIGHWAYS, AVIATION AND FACILITIES (408)
NORTHERN REGION HIGHWAYS & AVIATION (2068)
VALDEZ DISTRICT, CHART 1E**



**FY2025 Governor's Budget
HIGHWAYS, AVIATION AND FACILITIES (408)
NORTHERN REGION HIGHWAYS & AVIATION (2068)
DALTON DISTRICT, CHART 2**

Eng/Arch IV
25-1914 SS 26

FAIRBANKS
(JBA)

Admin Assistant III
25-2073 GP 15
Admin Assist I
25-2117 GP 12
Admin Assist I
25-1638 GP 12

**Dalton M&O Superintendent
25-1903 SS 21**

Equip Operator (F1)
25-2041 LL 51

Equip Operator (F1)
25-3661 LL 51

**FBKS/DALTON
ROVING (JCN)**

Equip Operator (J1/J2)
25-2026 LL 54/53

Equip Operator (J1/J2)
25-2038 LL 54/53

Equip Operator (J1/J2)
25-2045 LL 54/53

Equip Operator (J1/J2)
25-3662 LL 54/53

Equip Operator (J1/J2)
25-3672 LL 54/53

Equip Operator (SJ2)
25-N11047 LL 56

Equip Operator (SJ2)
25-N11048 LL 56

Equip Operator (SJ2)
25-N11049 LL 56

Equip Operator (SJ2)
25-N11050 LL 56

Equip Operator (SJ2)
25-N11064 LL 56

Equip Operator (SJ2)
25-N11065 LL 56

Equip Operator (SJ2)
25-N11066 LL 56

Equip Operator (SJ2)
25-N11067 LL 56

**LIVENGOOD
(JQA)**

Equip Operator(J3/L)
25-1980 LL 52

Equip Operator (J1/J2)
25-1981 LL 54/53

Equip Operator (J1/J2)
25-1985 LL 54/53

Equip Operator (J1/J2)
25-2008 LL 54/53

Equip Operator (J1/J2)
25-2060 LL 54/53

Equip Operator (J1/J2)
25-3669 LL 54/53

Equip Operator (SJ2/J1)
25-2059 LL 56/54

**JIM RIVER
(KEE)**

Equip Operator (J3/L)
25-2032 LL 52

Equip Operator (J1/J2)
25-2053 LL 54/53

Equip Operator (J1/J2)
25-2058 LL 54/53

Equip Operator (J1/J2)
25-2066 LL 54/53

MANLEY (JRC)

Equip Operator (J3/L)
25-1982 LL 52

Equip Operator (J1/J2)
25-1960 LL 54/53

Equip Operator (J1/J2)
25-1969 LL 54/53

Equip Operator (J1/J2)
25-1971 LL 54/53

Equip Operator (SJ2/J1)
25-2050 LL 56/54

Equip Operator (SJ2/J1)
25-2055 LL 56/54

**COLDFOOT
(KRB)**

Equip Operator (J3/L)
25-2034 LL 52

Equip Operator (J1/J2)
25-2042 LL 54/53

Equip Operator (J1/J2)
25-3668 LL 54/53

Equip Operator (J1/J2)
25-2086(s) LL 54/53

Equip Operator (SJ2/J1)
25-2069 LL 56/54

**SEVEN MILE
(JQG)**

Equip Operator (J3/L)
25-2030 LL 52

Equip Operator (J1/J2)
25-2031 LL 54/53

Equip Operator (J1/J2)
25-2065 LL 54/53

Equip Operator (J1/J2)
25-2091 LL 54/53

**CHANDALAR
(LEA)**

Equip Operator (J3/L)
25-2028 LL 52

Equip Operator (J1/J2)
25-2051 LL 54/53

Equip Operator (J1/J2)
25-2062 LL 54/53

Equip Operator (J1/J2)
25-2070 LL 54/53

Equip Operator (J1/J2)
25-2090 LL 54/53

Equip Operator (J1/J2)
25-3664 LL 54/53

Equip Operator (J1/J2)
25-2036(s) LL 54/53

Equip Operator (SJ2/J1)
25-2019 LL 56/54

KEY:

F1 – Foremen 1
F2 – Foremen 2
J1 – Journey 1
J2 – Journey 2
J3/L – Journey 3/Lead
SJ1 – Sub-Journey 1
SJ2 – Sub-Journey 2
L – Lead
S – PPT/SACL

**SAG RIVER
(LED)**

Equip Operator (J3/L)
25-2029 LL 52

Equip Operator (J1/J2)
25-2035 LL 54/53

Equip Operator (J1/J2)
25-2040 LL 54/53

Equip Operator (J1/J2)
25-2057 LL 54/53

Equip Operator (SJ2/J1)
25-2206 LL 56/54

Equip Operator (SJ2/J1)
25-2080 LL 56/54

*All PCNs PFT unless otherwise designated
**(s) designates PPT/seasonal

**FY2025 Governor's Budget
 HIGHWAYS, AVIATION AND FACILITIES (408)
 NORTHERN REGION HIGHWAYS & AVIATION (2068)
 DALTON DISTRICT, CHART 2B**

FAIRBANKS
(JBA)

Dalton M&O Superintendent
25-1903 SS 21

**BARROW
(MEA)**

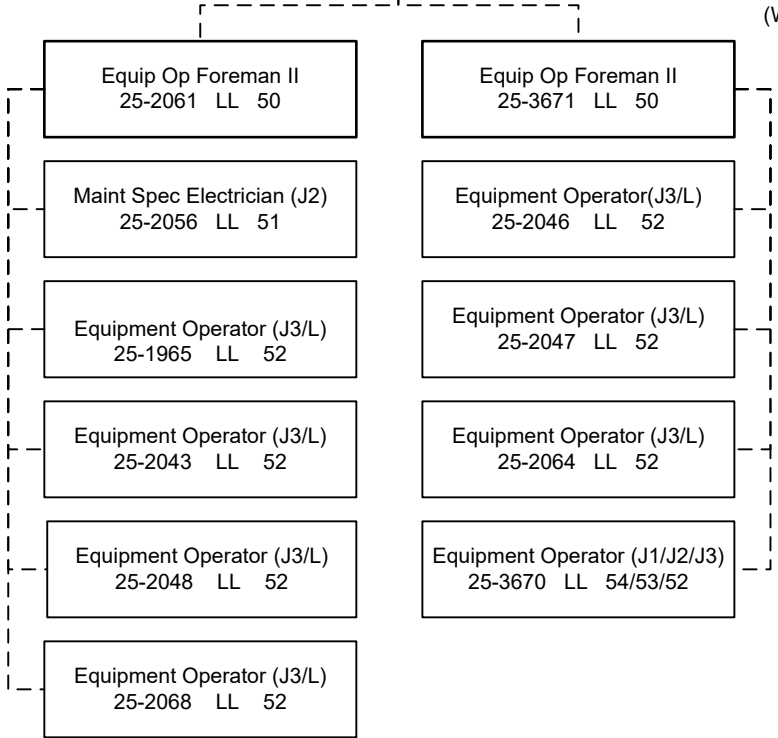
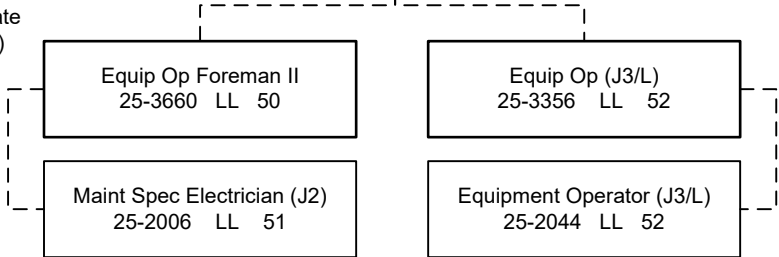
**DEADHORSE
(MBC)**

Rural Airport Foreman
25-3665 LL 49

Rural Airport Foreman
25-2023 LL 49

(Work alternate
workweeks)

(Work alternate
workweeks)



KEY:

- F1 – Foremen 1
- F2 – Foremen 2
- J1 – Journey 1
- J2 – Journey 2
- J3/L – Journey 3/Lead
- SJ1 – Sub-Journey 1
- SJ2 – Sub-Journey 2
- L – Lead
- S – PPT/SACL

*All PCNs PFT unless otherwise designated

**FY2025 Governor's Budget
HIGHWAYS, AVIATION AND FACILITIES (408)
NORTHERN REGION HIGHWAYS & AVIATION (2068)
WESTERN DISTRICT, CHART 3**

**NOME
(HTA)**

Eng/Arch 4
25-1914 SS 26

Western M&O Superintendent
25-2162 SS 21

Vacant
Admin Asst 3
25-2138 GP 15

Stock & Part Svcs 3
25-1253 LL 54

**Task assigned to NR Construction

**KOTZEBUE
AIRPORT
(KAA)**

Rural Airport Foreman
25-2128 LL 49

Equip Operator (J3)
25-2129 LL 52

Equipment Operator (J3/L)
25-2137 LL 52

Equipment Operator (J3/L)
25-3655 LL 52

Equipment Operator (J3/L)
25-3656 LL 52

Equipment Operator (J3/L)
25-3658 LL 52

Equipment Operator (J3/L)
25-2147 LL 52

Office Assistant 3
25-2142 GP 11

Office Assistant 3
25-1783 GP 11

**NOME
AIRPORT
(HTA)**

Rural Airport Foreman
25-2123 LL 49

Equipment Operator (J3/L)
25-1671 LL 52

Equipment Operator (J3/L)
25-2125 LL 52

Equipment Operator (J3/L)
25-2130 LL 52

Equipment Operator (J3/L)
25-2139 LL 52

Equipment Operator (J3/L)
25-2140 LL 52

Equipment Operator (J3/L)
25-2146 LL 52

Equip Operator (J3)
25-2154 LL 52

Equip Operator (J1/J2/J3)
25-3657 LL 54/53/52

**NOME
HIGHWAYS
(HTA)**

Equipment Operator (F1)
25-2124 LL 51

Equipment Operator (J2)
25-2126 LL 53

Equipment Operator (J2)
25-2135 LL 53

Equipment Operator (J2)
25-2136 LL 53

Equipment Operator (J2)
25-2151 LL 53

Equipment Operator (J2)
25-2152 LL 53

Equipment Operator (J1/J2)
25-2153 LL 54/53

KEY:

- F1 – Foremen 1
- F2 – Foremen 2
- J1 – Journey 1
- J2 – Journey 2
- J3/L – Journey 3/Lead
- SJ1 – Sub-Journey 1
- SJ2 – Sub-Journey 2
- L – Lead
- S – PPT/SACL

*All PCNs PFT unless otherwise designated

**ST. MARY'S
(EWG)**

Equipment Operator (F1)
25-1178 LL 51

Equipment Operator (J2)
25-1181 LL 53

Equipment Operator (J1/J2)
25-1472 LL 54/53

**UNALAKLEET
AIRPORT
(HQA)**

Equipment Operator (F1)
25-2132 LL 51

Equipment Operator (J1/J2)
25-2037 LL 54/53

Equipment Operator (J2)
25-2149 LL 53