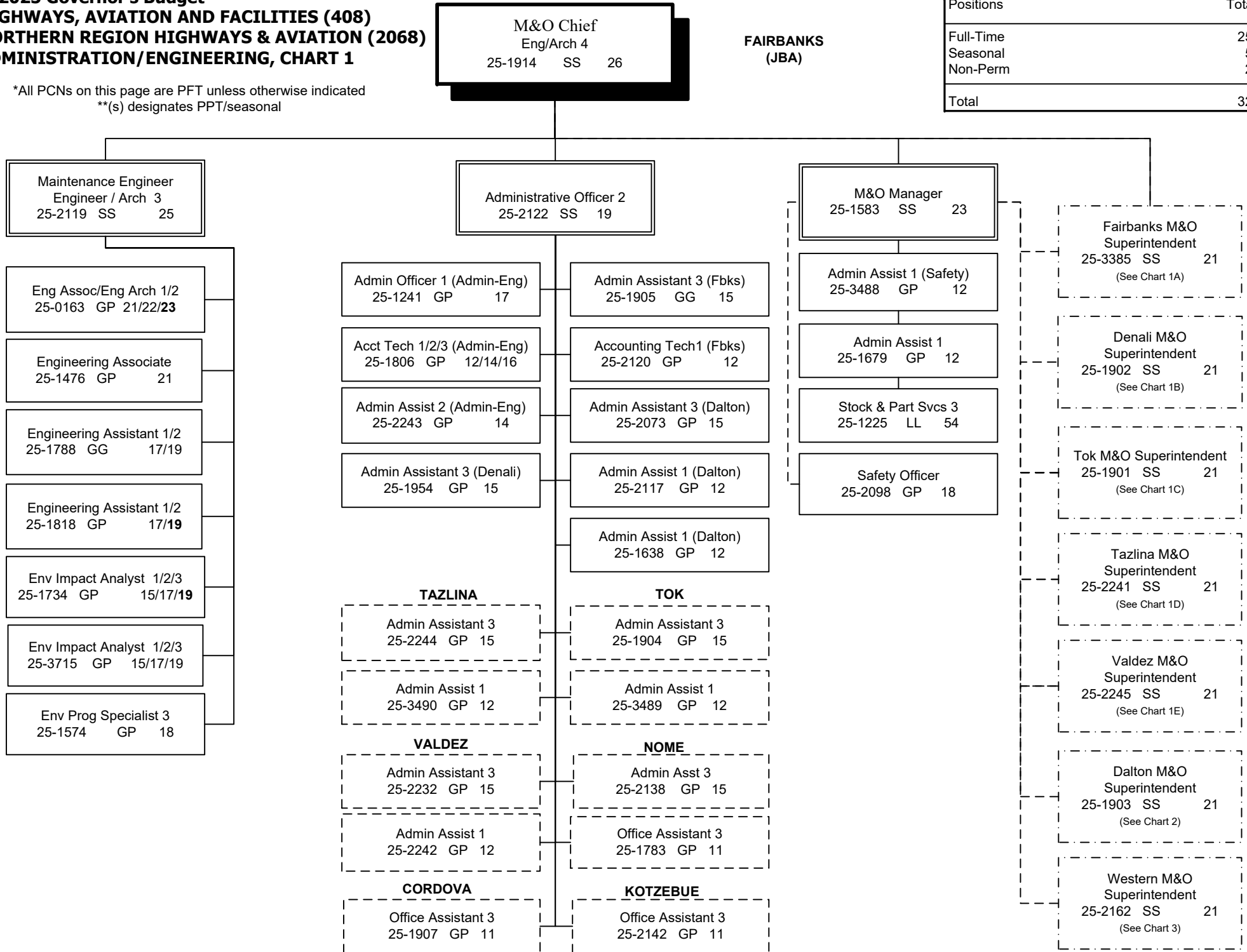


**FY2025 Governor's Budget
HIGHWAYS, AVIATION AND FACILITIES (408)
NORTHERN REGION HIGHWAYS & AVIATION (2068)
ADMINISTRATION/ENGINEERING, CHART 1**

*All PCNs on this page are PFT unless otherwise indicated
**(s) designates PPT/seasonal

NORTHERN REGION HIGHWAYS & AVIATION	
Positions	Total
Full-Time	256
Seasonal	51
Non-Perm	20
Total	327

**FAIRBANKS
(JBA)**



**FY2025 Governor's Budget
HIGHWAYS, AVIATION AND FACILITIES (408)
NORTHERN REGION HIGHWAYS & AVIATION (2068)
FAIRBANKS DISTRICT, CHART 1A**

Eng/Arch 4
25-1914 SS 26

KEY:
F1 – Foremen 1
F2 – Foremen 2
J1 – Journey 1
J2 – Journey 2
J3/L – Journey 3/Lead
SJ1 – Sub-Journey 1
SJ2 – Sub-Journey 2
L – Lead
S – PPT/SACL

Fairbanks M&O Superintendent
25-3385 SS 21

Equipment Operator (F2)
25-1919 LL 50

Admin Assistant 3
25-1905 GG 15

Accounting Tech 1
25-2120 GP 12

**MONTANA CREEK
(JME)**

Equipment Operator (J1/J2)
25-1934 LL 54/53

Equipment Operator (J1/J2)
25-1964 LL 54/53

Equipment Operator (J1/J2)
25-2049 LL 54/53

Equipment Operator (J1/J2)
25-3673 LL 54/53

Equipment Operator (J1/J2)
25-3675 LL 54/53

**CENTRAL
(JMB)**

Equipment Operator (F1)
25-3676 LL 51

**BIRCH LAKE
(JJD)**

Equipment Operator (J3/L)
25-3864 LL 52

Equipment Operator (J1/J2)
25-3865 LL 54/53

Equipment Operator (J2)
25-1948 LL 53

**FAIRBANKS
(JBA)**

Equipment Operator (F1)
25-1927 LL 51

Equipment Operator (J2)
25-1458 LL 53

Equipment Operator (J2)
25-1917 LL 53

Equipment Operator (J2)
25-1930 LL 53

Equipment Operator (J2)
25-2071 LL 53

Equipment Operator (J1)
25-1933 LL 54

Equipment Operator (J1)
25-1562 LL 54

Equipment Operator (J1)
25-2077 LL 54

Equipment Operator (J1)
25-2081 LL 54

Equipment Operator (F1)
25-1920 LL 51

Equipment Operator (J2)
25-1931 LL 53

Equipment Operator (J2)
25-1941 LL 53

Equipment Operator (J2)
25-1943 LL 53

Equipment Operator (J2)
25-1986 LL 53

Equipment Operator (J2)
25-3437 LL 53

Equipment Operator (J1)
25-2022 LL 54

Equip Operator (SJ2/J1)
25-2017 LL 56/54

Equipment Operator (F1)
25-1929 LL 51

Equipment Operator (J2)
25-1924 LL 53

Equipment Operator (J2)
25-1935 LL 53

Equipment Operator (J2)
25-1989 LL 53

Equipment Operator (J2)
25-1936 LL 53

Equipment Operator (J1)
25-1928 LL 54

Equipment Operator (J1)
25-1918 LL 54

Equipment Operator (J1)
25-1946 LL 54

Equipment Operator (J1)
25-1996 LL 54

Equip Operator (SJ2/J1)
25-1681 LL 56/54

Equipment Operator (F1)
25-1915 LL 51

Equipment Operator (J2)
25-1926 LL 53

Equipment Operator (J2)
25-1937 LL 53

Equipment Operator (J2)
25-1979 LL 53

Equipment Operator (J2)
25-3663 LL 53

Equipment Operator (J2)
25-N21010 LL 53

Equipment Operator (J1)
25-1944 LL 54

Equipment Operator (J1)
25-2072 LL 54

Equipment Operator (J1)
25-2079 LL 54

Equipment Operator (J1)
25-1973(s) LL 54

Equipment Operator (SJ1)
25-1940(s) LL 58

Equipment Operator (SJ1)
25-2074(s) LL 58

Equipment Operator (SJ1)
25-N09042 LL 58

Equipment Operator (SJ1)
25-N09043 LL 58

Equipment Operator (SJ1)
25-N09044 LL 58

TRAFFIC

Maint Spec TCES(F1)
25-2075 LL 50

Maint Spec TCES (J2)
25-1916 LL 51

Maint Spec TCES (J2)
25-1968 LL 51

SIGNS

Equipment Operator (J2)
25-1670 LL 53

Equipment Operator (J2)
25-2088 LL 53

*All PCNs are PFT unless otherwise designated
**(s) Designates PPT/seasonal position
All positions are located in Fairbanks unless otherwise indicated

**FY2025 Governor's Budget
HIGHWAYS, AVIATION AND FACILITIES (408)
NORTHERN REGION HIGHWAYS & AVIATION (2068)
DENALI DISTRICT, CHART 1B**

**FAIRBANKS
(JBA)**

Eng/Arch 4
25-1914 SS 26

Denali M&O Superintendent
25-1902 SS 21

Admin Assistant 3
25-1954 GP 15

**CANTWELL
(HJI)**

Equipment Operator (F1)
25-1952 LL 51

Equipment Operator (J1/J2)
25-1921 LL 54/53

Equipment Operator (J1/J2)
25-1991 LL 54/53

Equipment Operator (J1/J2)
25-1999 LL 54/53

Equipment Operator (J1/J2)
25-2000 LL 54/53

Equipment Operator (J1/J2)
25-2001 LL 54/53

Equipment Operator (J2)
25-2025(s) LL 53

Equipment Operator (J2)
25-3610(s) LL 53

Equipment Operator (SJ1)
25-1706(s) LL 58

**HEALY
(HJA)**

Equipment Operator (J3/L)
25-1995 LL 52

Equipment Operator (J2)
25-1997 LL 53

Equipment Operator (J2)
25-1998(s) LL 53

Equipment Operator (J1)
25-1961(s) LL 54

Equipment Operator (SJ1)
25-N16168 LL 58

**NENANA
(JBM)**

Equipment Operator (J3/L)
25-1990 LL 52

Equipment Operator (J1/J2)
25-1955 LL 54/53

Equipment Operator (J1/J2)
25-1993 LL 54/53

Equipment Operator (J1/J2)
25-2087 LL 54/53

Equipment Operator (J1)
25-1942(s) LL 54

Equipment Operator (SJ2)
25-2018(s) LL 56

**NR BRIDGE CREW -
FAIRBANKS
(JBA)**

Maint Specialist Foreman
25-1932 LL 50

Equipment Operator (SJ1)
25-N09041 LL 58

Equipment Operator (SJ1)
25-N09040 LL 58

**RURAL AVIATION - Z269
FAIRBANKS
(JBA)**

Equipment Operator Lead (J3/L)
25-3554 LL 52

**GALENA
(HYC)**

Equipment Operator (F1)
25-1908 LL 51

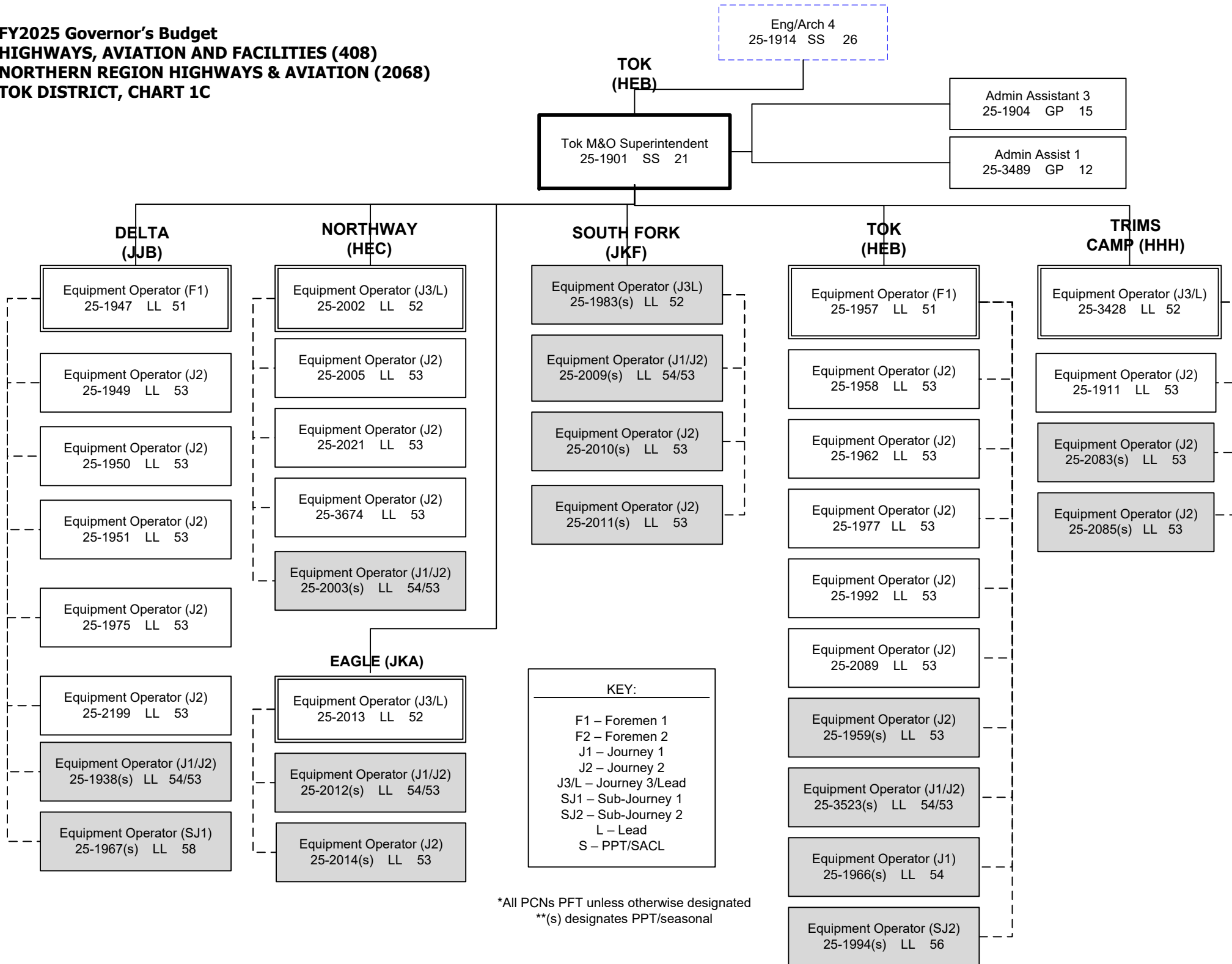
Equipment Operator (J2)
25-1909 LL 53

KEY:

- F1 – Foremen 1
- F2 – Foremen 2
- J1 – Journey 1
- J2 – Journey 2
- J3/L – Journey 3/Lead
- SJ1 – Sub-Journey 1
- SJ2 – Sub-Journey 2
- L – Lead
- S – PPT/SACL

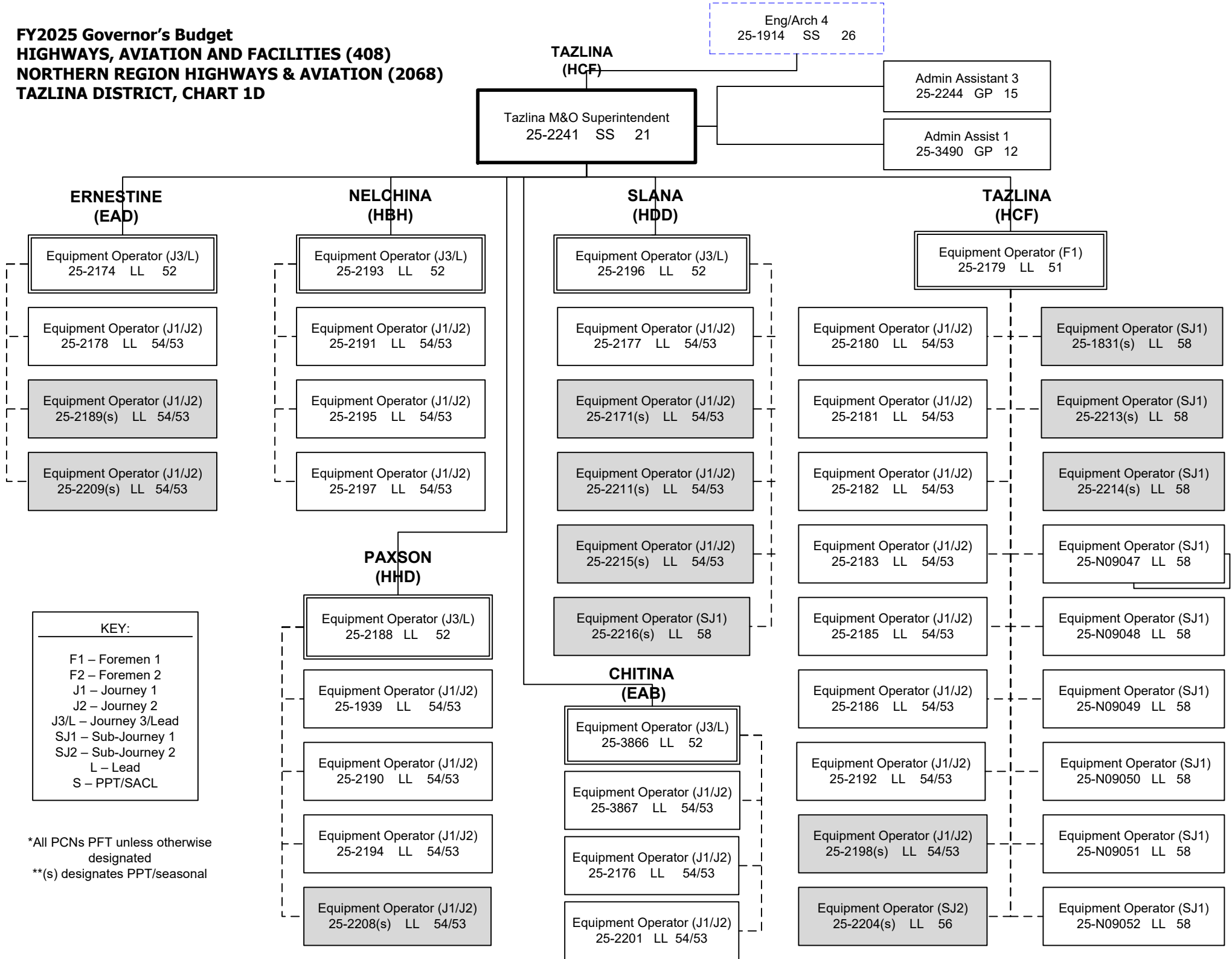
*All PCNs PFT unless otherwise designated
**(s) designates PPT/seasonal

**FY2025 Governor's Budget
HIGHWAYS, AVIATION AND FACILITIES (408)
NORTHERN REGION HIGHWAYS & AVIATION (2068)
TOK DISTRICT, CHART 1C**



*All PCNs PFT unless otherwise designated
**(s) designates PPT/seasonal

**FY2025 Governor's Budget
HIGHWAYS, AVIATION AND FACILITIES (408)
NORTHERN REGION HIGHWAYS & AVIATION (2068)
TAZLINA DISTRICT, CHART 1D**



Tazlina M&O Superintendent
25-2241 SS 21

Eng/Arch 4
25-1914 SS 26

Admin Assistant 3
25-2244 GP 15

Admin Assist 1
25-3490 GP 12

**ERNESTINE
(EAD)**

**NELCHINA
(HBH)**

**SLANA
(HDD)**

**TAZLINA
(HCF)**

Equipment Operator (J3/L)
25-2174 LL 52

Equipment Operator (J1/J2)
25-2178 LL 54/53

Equipment Operator (J1/J2)
25-2189(s) LL 54/53

Equipment Operator (J1/J2)
25-2209(s) LL 54/53

Equipment Operator (J3/L)
25-2193 LL 52

Equipment Operator (J1/J2)
25-2191 LL 54/53

Equipment Operator (J1/J2)
25-2195 LL 54/53

Equipment Operator (J1/J2)
25-2197 LL 54/53

Equipment Operator (J3/L)
25-2196 LL 52

Equipment Operator (J1/J2)
25-2177 LL 54/53

Equipment Operator (J1/J2)
25-2171(s) LL 54/53

Equipment Operator (J1/J2)
25-2211(s) LL 54/53

Equipment Operator (J1/J2)
25-2215(s) LL 54/53

Equipment Operator (SJ1)
25-2216(s) LL 58

Equipment Operator (F1)
25-2179 LL 51

Equipment Operator (J1/J2)
25-2180 LL 54/53

Equipment Operator (J1/J2)
25-2181 LL 54/53

Equipment Operator (J1/J2)
25-2182 LL 54/53

Equipment Operator (J1/J2)
25-2183 LL 54/53

Equipment Operator (J1/J2)
25-2185 LL 54/53

Equipment Operator (J1/J2)
25-2186 LL 54/53

Equipment Operator (J1/J2)
25-2192 LL 54/53

Equipment Operator (J1/J2)
25-2198(s) LL 54/53

Equipment Operator (SJ2)
25-2204(s) LL 56

Equipment Operator (SJ1)
25-1831(s) LL 58

Equipment Operator (SJ1)
25-2213(s) LL 58

Equipment Operator (SJ1)
25-2214(s) LL 58

Equipment Operator (SJ1)
25-N09047 LL 58

Equipment Operator (SJ1)
25-N09048 LL 58

Equipment Operator (SJ1)
25-N09049 LL 58

Equipment Operator (SJ1)
25-N09050 LL 58

Equipment Operator (SJ1)
25-N09051 LL 58

Equipment Operator (SJ1)
25-N09052 LL 58

KEY:
F1 – Foremen 1
F2 – Foremen 2
J1 – Journey 1
J2 – Journey 2
J3/L – Journey 3/Lead
SJ1 – Sub-Journey 1
SJ2 – Sub-Journey 2
L – Lead
S – PPT/SACL

*All PCNs PFT unless otherwise designated
**(s) designates PPT/seasonal

**CHITINA
(EAB)**

Equipment Operator (J3/L)
25-3866 LL 52

Equipment Operator (J1/J2)
25-3867 LL 54/53

Equipment Operator (J1/J2)
25-2176 LL 54/53

Equipment Operator (J1/J2)
25-2201 LL 54/53

**PAXSON
(HHD)**

Equipment Operator (J3/L)
25-2188 LL 52

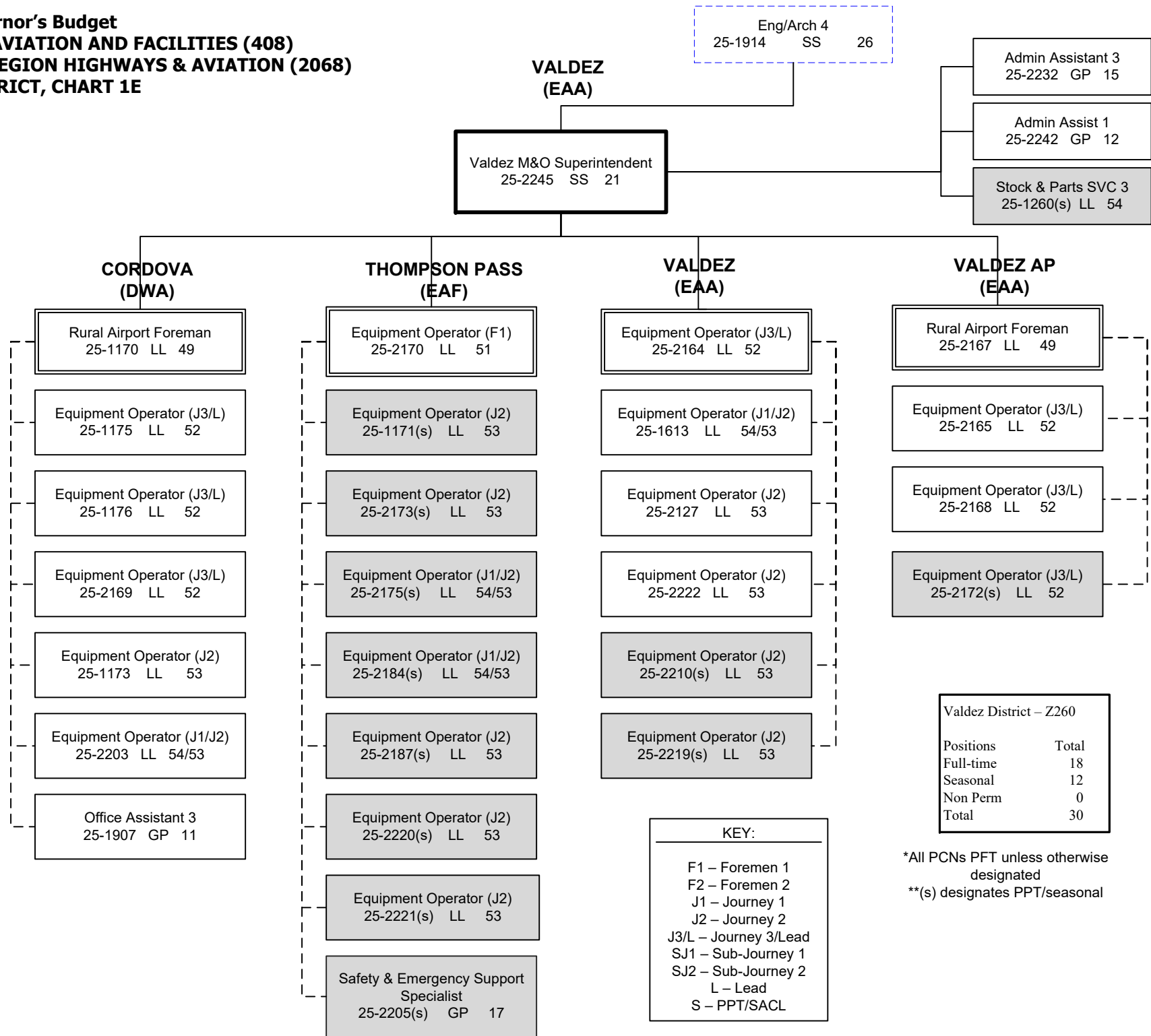
Equipment Operator (J1/J2)
25-1939 LL 54/53

Equipment Operator (J1/J2)
25-2190 LL 54/53

Equipment Operator (J1/J2)
25-2194 LL 54/53

Equipment Operator (J1/J2)
25-2208(s) LL 54/53

**FY2025 Governor's Budget
HIGHWAYS, AVIATION AND FACILITIES (408)
NORTHERN REGION HIGHWAYS & AVIATION (2068)
VALDEZ DISTRICT, CHART 1E**



**FY2025 Governor's Budget
HIGHWAYS, AVIATION AND FACILITIES (408)
NORTHERN REGION HIGHWAYS & AVIATION (2068)
DALTON DISTRICT, CHART 2**

Eng/Arch IV
25-1914 SS 26

FAIRBANKS
(JBA)

Admin Assistant III
25-2073 GP 15
Admin Assist I
25-2117 GP 12
Admin Assist I
25-1638 GP 12

**Dalton M&O Superintendent
25-1903 SS 21**

Equip Operator (F1)
25-2041 LL 51

Equip Operator (F1)
25-3661 LL 51

**FBKS/DALTON
ROVING (JCN)**

Equip Operator (J1/J2)
25-2026 LL 54/53

Equip Operator (J1/J2)
25-2038 LL 54/53

Equip Operator (J1/J2)
25-2045 LL 54/53

Equip Operator (J1/J2)
25-3662 LL 54/53

Equip Operator (J1/J2)
25-3672 LL 54/53

Equip Operator (SJ2)
25-N11047 LL 56

Equip Operator (SJ2)
25-N11048 LL 56

Equip Operator (SJ2)
25-N11049 LL 56

Equip Operator (SJ2)
25-N11050 LL 56

Equip Operator (SJ2)
25-N11064 LL 56

Equip Operator (SJ2)
25-N11065 LL 56

Equip Operator (SJ2)
25-N11066 LL 56

Equip Operator (SJ2)
25-N11067 LL 56

**LIVENGOOD
(JQA)**

Equip Operator(J3/L)
25-1980 LL 52

Equip Operator (J1/J2)
25-1981 LL 54/53

Equip Operator (J1/J2)
25-1985 LL 54/53

Equip Operator (J1/J2)
25-2008 LL 54/53

Equip Operator (J1/J2)
25-2060 LL 54/53

Equip Operator (J1/J2)
25-3669 LL 54/53

Equip Operator (SJ2/J1)
25-2059 LL 56/54

**JIM RIVER
(KEE)**

Equip Operator (J3/L)
25-2032 LL 52

Equip Operator (J1/J2)
25-2053 LL 54/53

Equip Operator (J1/J2)
25-2058 LL 54/53

Equip Operator (J1/J2)
25-2066 LL 54/53

MANLEY (JRC)

Equip Operator (J3/L)
25-1982 LL 52

Equip Operator (J1/J2)
25-1960 LL 54/53

Equip Operator (J1/J2)
25-1969 LL 54/53

Equip Operator (J1/J2)
25-1971 LL 54/53

Equip Operator (SJ2/J1)
25-2050 LL 56/54

Equip Operator (SJ2/J1)
25-2055 LL 56/54

**COLDFOOT
(KRB)**

Equip Operator (J3/L)
25-2034 LL 52

Equip Operator (J1/J2)
25-2042 LL 54/53

Equip Operator (J1/J2)
25-3668 LL 54/53

Equip Operator (J1/J2)
25-2086(s) LL 54/53

Equip Operator (SJ2/J1)
25-2069 LL 56/54

**SEVEN MILE
(JQG)**

Equip Operator (J3/L)
25-2030 LL 52

Equip Operator (J1/J2)
25-2031 LL 54/53

Equip Operator (J1/J2)
25-2065 LL 54/53

Equip Operator (J1/J2)
25-2091 LL 54/53

**CHANDALAR
(LEA)**

Equip Operator (J3/L)
25-2028 LL 52

Equip Operator (J1/J2)
25-2051 LL 54/53

Equip Operator (J1/J2)
25-2062 LL 54/53

Equip Operator (J1/J2)
25-2070 LL 54/53

Equip Operator (J1/J2)
25-2090 LL 54/53

Equip Operator (J1/J2)
25-3664 LL 54/53

Equip Operator (J1/J2)
25-2036(s) LL 54/53

Equip Operator (SJ2/J1)
25-2019 LL 56/54

KEY:
F1 – Foremen 1
F2 – Foremen 2
J1 – Journey 1
J2 – Journey 2
J3/L – Journey 3/Lead
SJ1 – Sub-Journey 1
SJ2 – Sub-Journey 2
L – Lead
S – PPT/SACL

**SAG RIVER
(LED)**

Equip Operator (J3/L)
25-2029 LL 52

Equip Operator (J1/J2)
25-2035 LL 54/53

Equip Operator (J1/J2)
25-2040 LL 54/53

Equip Operator (J1/J2)
25-2057 LL 54/53

Equip Operator (SJ2/J1)
25-2206 LL 56/54

Equip Operator (SJ2/J1)
25-2080 LL 56/54

*All PCNs PFT unless otherwise designated
**(s) designates PPT/seasonal

**FY2025 Governor's Budget
 HIGHWAYS, AVIATION AND FACILITIES (408)
 NORTHERN REGION HIGHWAYS & AVIATION (2068)
 DALTON DISTRICT, CHART 2B**

FAIRBANKS
(JBA)

Dalton M&O Superintendent
25-1903 SS 21

**BARROW
(MEA)**

**DEADHORSE
(MBC)**

Rural Airport Foreman
25-3665 LL 49

Rural Airport Foreman
25-2023 LL 49

(Work alternate
workweeks)

(Work alternate
workweeks)

Equip Op Foreman II
25-3660 LL 50

Equip Op (J3/L)
25-3356 LL 52

Equip Op Foreman II
25-2061 LL 50

Equip Op Foreman II
25-3671 LL 50

Maint Spec Electrician (J2)
25-2006 LL 51

Equipment Operator (J3/L)
25-2044 LL 52

Maint Spec Electrician (J2)
25-2056 LL 51

Equipment Operator (J3/L)
25-2046 LL 52

Equipment Operator (J3/L)
25-1965 LL 52

Equipment Operator (J3/L)
25-2047 LL 52

Equipment Operator (J3/L)
25-2043 LL 52

Equipment Operator (J3/L)
25-2064 LL 52

Equipment Operator (J3/L)
25-2048 LL 52

Equipment Operator (J1/J2/J3)
25-3670 LL 54/53/52

Equipment Operator (J3/L)
25-2068 LL 52

KEY:

- F1 – Foremen 1
- F2 – Foremen 2
- J1 – Journey 1
- J2 – Journey 2
- J3/L – Journey 3/Lead
- SJ1 – Sub-Journey 1
- SJ2 – Sub-Journey 2
- L – Lead
- S – PPT/SACL

*All PCNs PFT unless otherwise
designated

**FY2025 Governor's Budget
HIGHWAYS, AVIATION AND FACILITIES (408)
NORTHERN REGION HIGHWAYS & AVIATION (2068)
WESTERN DISTRICT, CHART 3**

**NOME
(HTA)**

Eng/Arch 4
25-1914 SS 26

Western M&O Superintendent
25-2162 SS 21

Vacant
Admin Asst 3
25-2138 GP 15

Stock & Part Svcs 3
25-1253 LL 54

**Task assigned to NR Construction

**KOTZEBUE
AIRPORT
(KAA)**

Rural Airport Foreman
25-2128 LL 49

Equip Operator (J3)
25-2129 LL 52

Equipment Operator (J3/L)
25-2137 LL 52

Equipment Operator (J3/L)
25-3655 LL 52

Equipment Operator (J3/L)
25-3656 LL 52

Equipment Operator (J3/L)
25-3658 LL 52

Equipment Operator (J3/L)
25-2147 LL 52

Office Assistant 3
25-2142 GP 11

Office Assistant 3
25-1783 GP 11

**NOME
AIRPORT
(HTA)**

Rural Airport Foreman
25-2123 LL 49

Equipment Operator (J3/L)
25-1671 LL 52

Equipment Operator (J3/L)
25-2125 LL 52

Equipment Operator (J3/L)
25-2130 LL 52

Equipment Operator (J3/L)
25-2139 LL 52

Equipment Operator (J3/L)
25-2140 LL 52

Equipment Operator (J3/L)
25-2146 LL 52

Equip Operator (J3)
25-2154 LL 52

Equip Operator (J1/J2/J3)
25-3657 LL 54/53/52

**NOME
HIGHWAYS
(HTA)**

Equipment Operator (F1)
25-2124 LL 51

Equipment Operator (J2)
25-2126 LL 53

Equipment Operator (J2)
25-2135 LL 53

Equipment Operator (J2)
25-2136 LL 53

Equipment Operator (J2)
25-2151 LL 53

Equipment Operator (J2)
25-2152 LL 53

Equipment Operator (J1/J2)
25-2153 LL 54/53

KEY:

- F1 – Foremen 1
- F2 – Foremen 2
- J1 – Journey 1
- J2 – Journey 2
- J3/L – Journey 3/Lead
- SJ1 – Sub-Journey 1
- SJ2 – Sub-Journey 2
- L – Lead
- S – PPT/SACL

*All PCNs PFT unless otherwise designated

**ST. MARY'S
(EWG)**

Equipment Operator (F1)
25-1178 LL 51

Equipment Operator (J2)
25-1181 LL 53

Equipment Operator (J1/J2)
25-1472 LL 54/53

**UNALAKLEET
AIRPORT
(HQA)**

Equipment Operator (F1)
25-2132 LL 51

Equipment Operator (J1/J2)
25-2037 LL 54/53

Equipment Operator (J2)
25-2149 LL 53