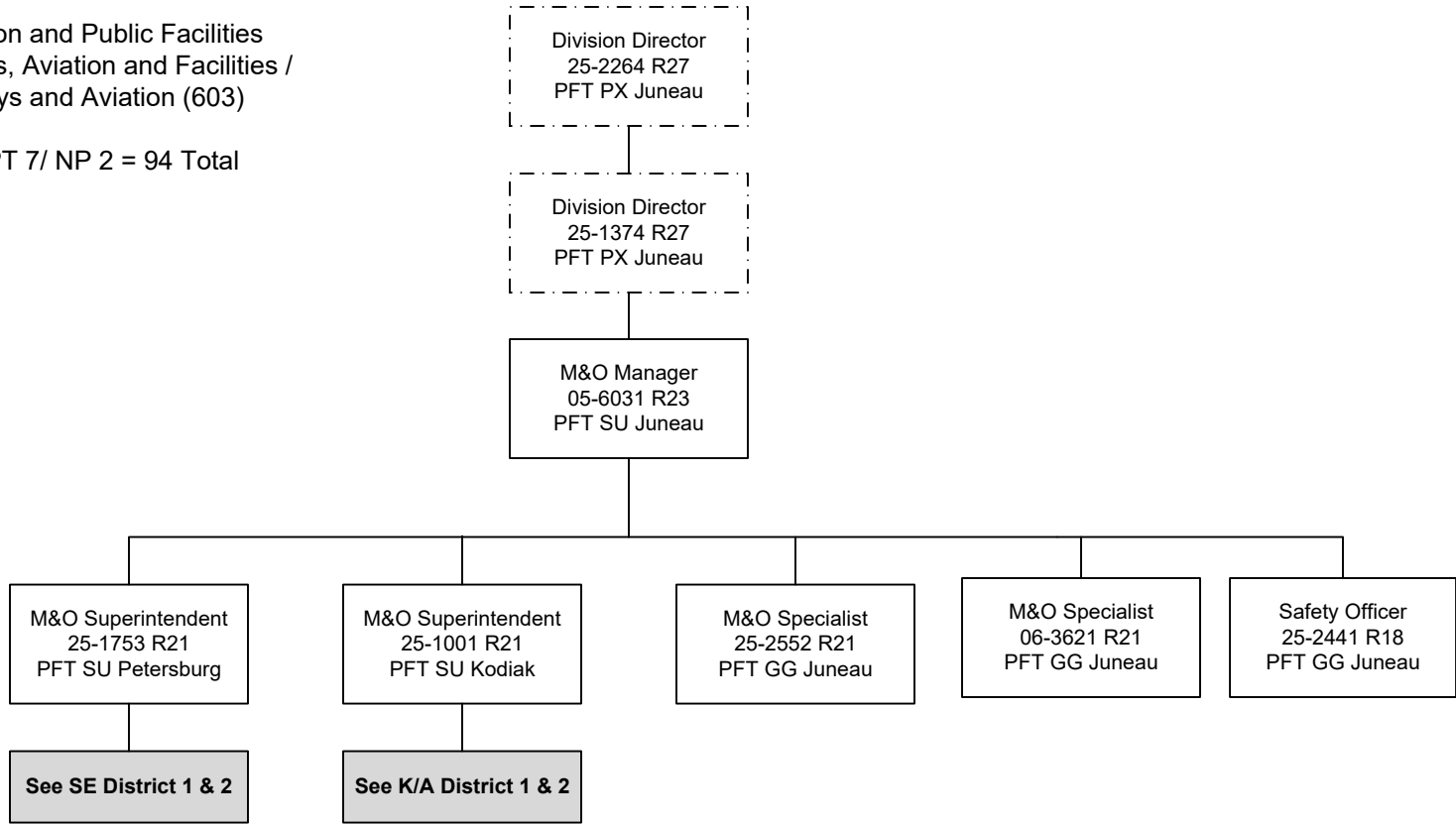


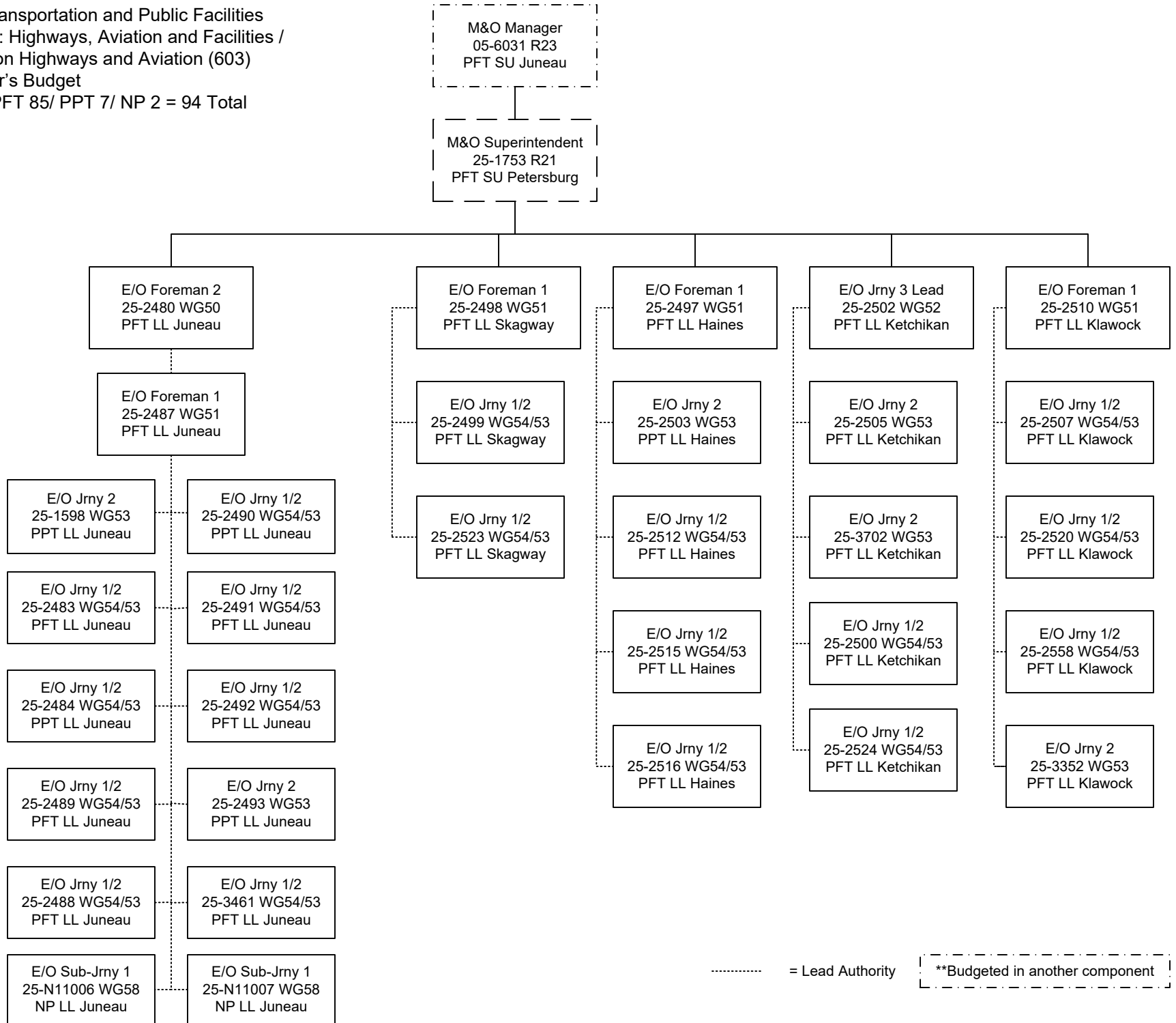
Department of Transportation and Public Facilities
RDU/Component: Highways, Aviation and Facilities /
Southcoast Region Highways and Aviation (603)
FY2025 Governor's Budget
Position Totals: PFT 85/ PPT 7/ NP 2 = 94 Total



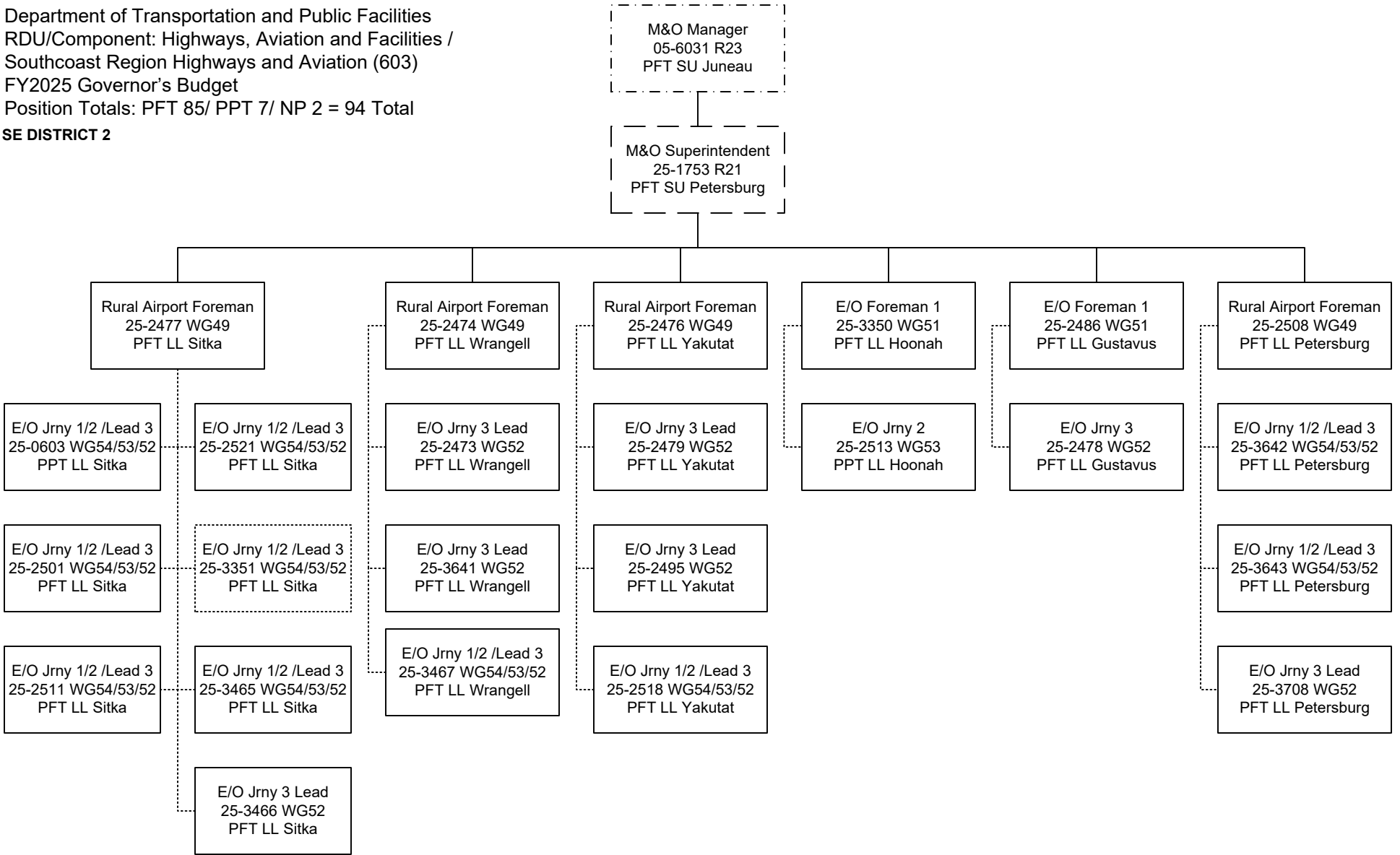
..... = Lead Authority

----- **Budgeted in another component

Department of Transportation and Public Facilities
 RDU/Component: Highways, Aviation and Facilities /
 Southcoast Region Highways and Aviation (603)
 FY2025 Governor's Budget
 Position Totals: PFT 85/ PPT 7/ NP 2 = 94 Total
SE DISTRICT 1



Department of Transportation and Public Facilities
 RDU/Component: Highways, Aviation and Facilities /
 Southcoast Region Highways and Aviation (603)
 FY2025 Governor's Budget
 Position Totals: PFT 85/ PPT 7/ NP 2 = 94 Total
SE DISTRICT 2

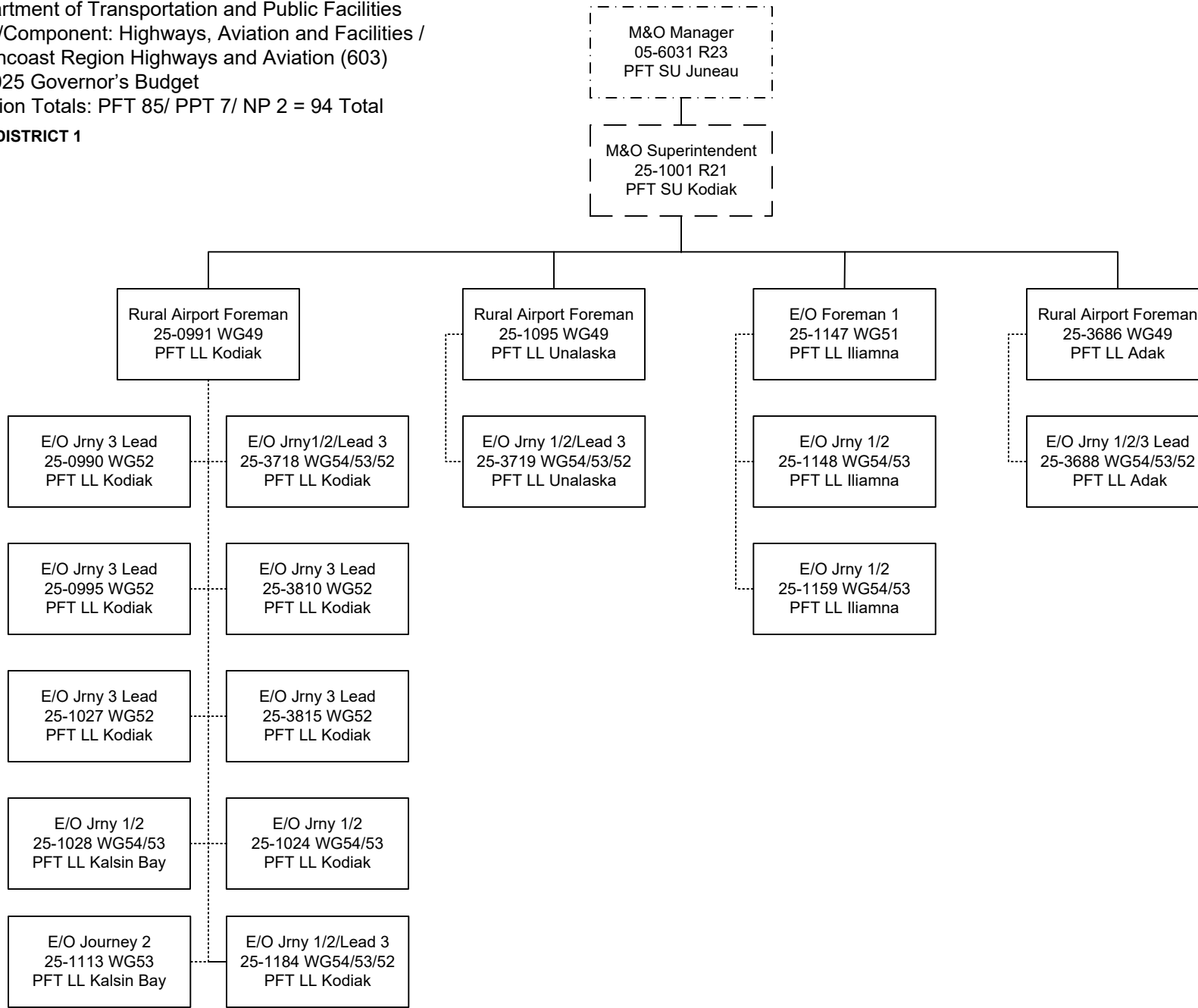


----- = Lead Authority

----- **Budgeted in another component

Department of Transportation and Public Facilities
 RDU/Component: Highways, Aviation and Facilities /
 Southcoast Region Highways and Aviation (603)
 FY2025 Governor's Budget
 Position Totals: PFT 85/ PPT 7/ NP 2 = 94 Total

K/A DISTRICT 1

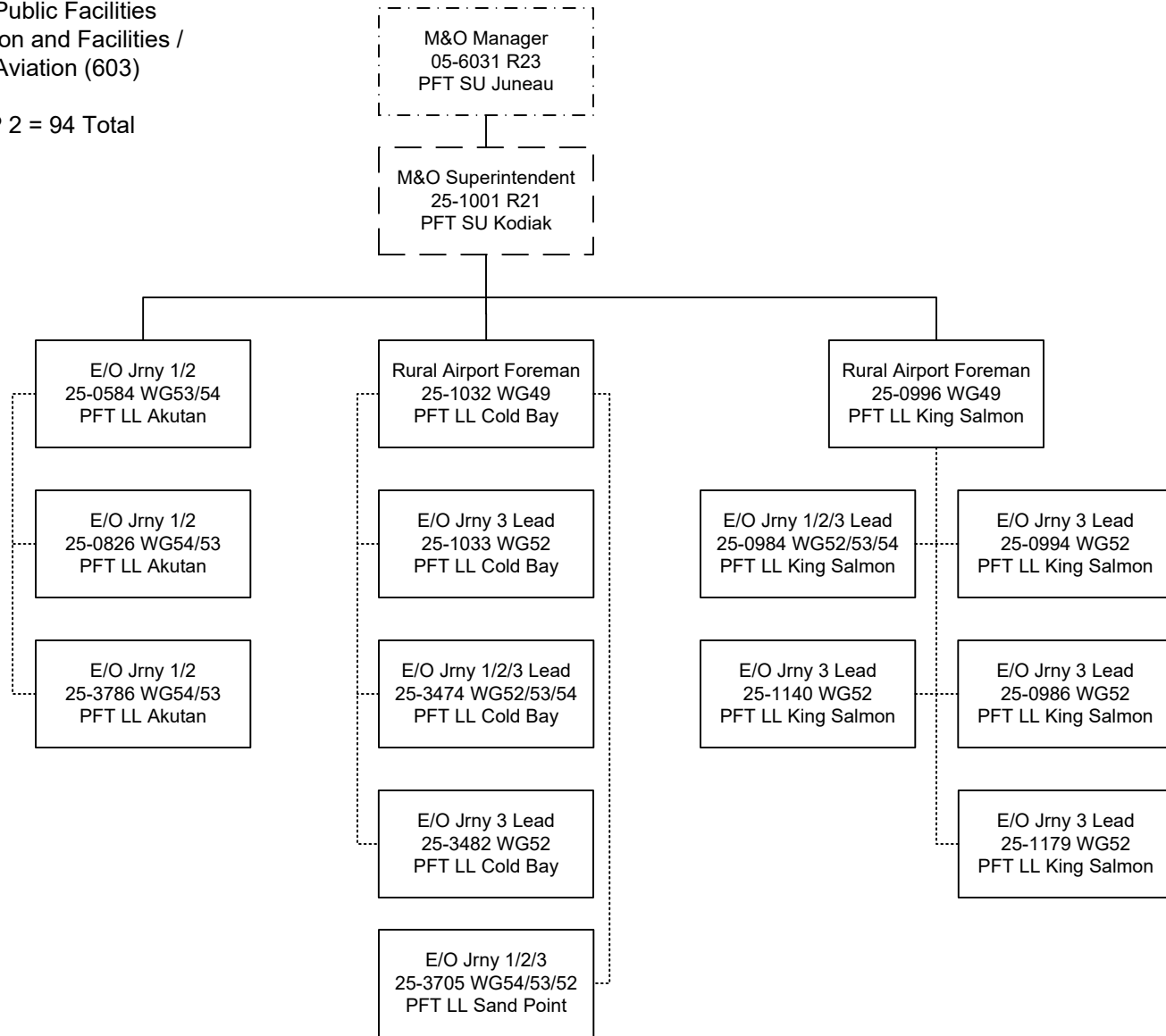


----- = Lead Authority

----- **Budgeted in another component

Department of Transportation and Public Facilities
 RDU/Component: Highways, Aviation and Facilities /
 Southcoast Region Highways and Aviation (603)
 FY2025 Governor's Budget
 Position Totals: PFT 85/ PPT 7/ NP 2 = 94 Total

K/A DISTRICT 2



----- = Lead Authority

-----**Budgeted in another component