

**State of Alaska
FY2025 Governor's Operating Budget**

**Department of Transportation and Public Facilities
Marine Engineering
Component Budget Summary**

Component: Marine Engineering

Contribution to Department's Mission

Ensure that all Alaska Marine Highway System (AMHS) vessels and terminal facilities are safe, reliable, comfortable, and accessible to all Alaskans and visitors to the state.

Core Services

- Conduct annual inspections and maintenance to assure regulatory compliance and accomplish upgrades and repairs of the terminal facilities. Terminal facilities include transfer bridges, mooring structures, parking and staging areas, walkways, lighting, communication and security systems, water and waste treatment systems, electrical generation systems, and terminal buildings. This effort ensures that the ferry terminal facilities are in compliance with local, state, and federal regulations.
- Conduct annual vessel and terminal condition surveys to develop condition assessments of the assets and provide technical information necessary for long-range planning of capital improvements and maintenance.
- Develop plans, specifications, estimates, and manage the construction contracts for new vessel construction, and for the repair, refurbishment, and modernization of existing vessels and terminals to ensure compliance with state, federal, and international regulations, and United States Coast Guard (USCG) and marine classification society requirements.
- Support fleet operations through port engineer functions.
- Tend to AMHS vessels at commercial shipyards during both state overhauls and federal aid projects.
- Continue to use a "Reliability Based Maintenance" to address vessel repairs.

Major Component Accomplishments in 2023

- AMHS continues efforts to procure the Southwest Alaska Tustumena Replacement Vessel (TRV) as identified in the current Statewide Transportation Improvement Program (STIP). A multi-part Construction Manager/General Contractor (CMGC) is being utilized to procure the vessel to reduce overall project risk and increase industry participation. Extensive industry outreach has been completed during the year to promote the project and develop the required relationships to ensure the success of a project of this scale. Final design efforts have been approved under existing authorized funding. Negotiations are in progress for a Propulsion System Integrator to assist with design and provide construction and procurement of critical vessel equipment. A Request for Proposals (RFP) for the mission unique Vehicle Elevator and Turntable System (VETS) is in progress and an RFP for the construction of the shipyard is in development. The design has been modified to ensure utilization of current and emerging sustainable technologies including advanced hull form and auxiliary designs. The vessel has been revised to be Hybrid Electric Powered with the inclusion of a substantial Battery Energy Storage System to take advantage of current and future efficiencies. Grant applications for funding under numerous programs authorized by the Infrastructure Investment and Jobs Act (IIJA) have been submitted.
- The division manages design/construction projects utilizing federal funding sources for the Inter-Island Ferry Authority (IFA). During the past year, the division designed and completed a major renovation project on the M/V Stikine.
- The M/V Hubbard completed the federal aid-funded Capital Improvement Project for the addition of crew quarters and was put into service Summer 2023.

Key Component Challenges

- Delivery of vessels from overhaul periods back into revenue service within the planned operating schedule is difficult when discovery work during the overhaul process reveals additional work that needs to be completed before the vessel can return to service. This makes it difficult to adhere to the planned operating schedule when other vessels must be rerouted to maintain key routes. The lack of reserve vessels results in a complete service interruption if a vessel is unable to return to its scheduled operating plan due to a protracted maintenance/repair project.
- Significant engineering staff and crew shortages are creating challenges to complete annual overhauls in a timely

manner and workloads have become challenging for remaining staff and crew members.

- Federal projects require all steel incorporated into the project meet the Buy America Steel Regulations, i.e., steel must be manufactured in the United States. In some instances, vessel parts and components are not available domestically, and the waiver process for receiving authorization to purchase and install foreign steel has become very challenging or unobtainable.
- Reporting and compliance with Environmental Protection Agency emission regulations, specifically targeting locomotives and marine vessels, is onerous. AMHS is not immune from these regulations and requirements which change frequently. Maintaining compliance requires intensive support from shoreside staff and the department's environmental officer.
- Ensuring compliance with constantly evolving international, federal, state, and regulatory body requirements to maintain a safe and useable fleet providing for the public's transportation needs.
- Implementing and maintaining ship energy efficiency management plans.
- Increasing fuel efficiency.

Significant Changes in Results to be Delivered in FY2025

- M/V Tustumena replacement vessel is expected to be under active construction. It is anticipated this new vessel will provide more capability and more reliable ferry service to western Alaska.
- M/V Tazlina is expected to begin a federal aid-funded Capital Improvement Project for the addition of crew quarters, mirroring the previous Hubbard project. The vessel will also undergo required improvements to her ground tackle structure and associated equipment.
- The procurement of an upgraded Maintenance Management System for both vessel and shoreside asset tracking will satisfy regulatory requirements, increase performance and work effectiveness, and will provide management with a better tool to make results-based decisions. A Project Development Authorization has been issued to institute this program. A contract will be in place by 2024 and migration, implementation, and training will continue throughout the year.
- Implement and maintain a satellite internet system to be utilized fleet-wide, providing constant connectivity along each route which will drastically improve communication and business functions.

Statutory and Regulatory Authority

AS 19 Highways & Ferries
AS 44 State Government

Contact Information
Contact: Craig Torga, Marine Director Phone: (907) 228-7250 E-mail: craig.torga@alaska.gov

Marine Engineering Personal Services Information					
Authorized Positions			Personal Services Costs		
	<u>FY2024</u> <u>Management</u> <u>Plan</u>	<u>FY2025</u> <u>Governor</u>			
Full-time	18	18	Annual Salaries		1,375,676
Part-time	0	0	COLA		23,756
Nonpermanent	1	1	Premium Pay		19,929
			Annual Benefits		922,283
			<i>Less 3.19% Vacancy Factor</i>		<i>(74,644)</i>
			Lump Sum Premium Pay		250,000
Totals	19	19	Total Personal Services		2,517,000

Position Classification Summary					
Job Class Title	Anchorage	Fairbanks	Juneau	Others	Total
Administrative Assistant 1	0	0	0	1	1
Facilities Manager 1	0	0	0	1	1
M Eng Asst Mgr	0	0	0	1	1
Maint Gen Jrny	0	0	1	1	2
Marine Trans Srvs Mgr	0	0	0	1	1
Mts/Bfc Jrny 2	0	0	0	1	1
Office Assistant 3	0	0	0	1	1
Port Engineer	0	0	0	1	1
Stock & Parts Services 2	0	0	0	3	3
Vessel Construction Manager 1	0	0	0	3	3
Vessel Construction Manager 3	0	0	0	2	2
Totals	0	0	1	16	17

Component Detail All Funds
Department of Transportation and Public Facilities

Component: Marine Engineering (2359)
RDU: Marine Highway System (334)

Non-Formula Component

	FY2023 Actuals	FY2024 Enrolled	FY2024 Authorized	FY2024 Management Plan	FY2025 Governor Adjusted Base	FY2025 Governor	FY2024 Management Plan vs FY2025 Governor		
1000 Personal Services	0.0	2,562.9	2,562.9	2,462.6	2,517.0	2,517.0	54.4	2.2%	
2000 Travel	0.0	45.8	45.8	74.0	74.0	74.0	0.0	0.0%	
3000 Services	0.0	385.2	385.2	316.8	316.8	316.8	0.0	0.0%	
4000 Commodities	0.0	103.3	103.3	30.0	30.0	30.0	0.0	0.0%	
5000 Capital Outlay	0.0	0.0	0.0	0.0	0.0	0.0	0.0	0.0%	
7000 Grants, Benefits	0.0	0.0	0.0	0.0	0.0	0.0	0.0	0.0%	
8000 Miscellaneous	0.0	0.0	0.0	0.0	0.0	0.0	0.0	0.0%	
Totals	0.0	3,097.2	3,097.2	2,883.4	2,937.8	2,937.8	54.4	1.9%	
Fund Sources:									
1004 Gen Fund (UGF)	0.0	2,138.6	2,138.6	1,924.8	1,957.7	1,957.7	32.9	1.7%	
1061 CIP Rcpts (Other)	0.0	733.7	733.7	733.7	755.2	755.2	21.5	2.9%	
1076 Marine Hwy (DGF)	0.0	224.9	224.9	224.9	224.9	224.9	0.0	0.0%	
Unrestricted General (UGF)	0.0	2,138.6	2,138.6	1,924.8	1,957.7	1,957.7	32.9	1.7%	
Designated General (DGF)	0.0	224.9	224.9	224.9	224.9	224.9	0.0	0.0%	
Other Funds	0.0	733.7	733.7	733.7	755.2	755.2	21.5	2.9%	
Federal Funds	0.0	0.0	0.0	0.0	0.0	0.0	0.0	0.0%	
Positions:									
Permanent Full Time	0	18	18	18	18	18	0	0.0%	
Permanent Part Time	0	0	0	0	0	0	0	0.0%	
Non Permanent	0	1	1	1	1	1	0	0.0%	

Change Record Detail - Multiple Scenarios with Descriptions
Department of Transportation and Public Facilities

Component: Marine Engineering (2359)
RDU: Marine Highway System (334)

Scenario/Change Record Title	Trans Type	Totals	Personal Services	Travel	Services	Commodities	Capital Outlay	Grants, Benefits	Miscellaneous	Positions		NP
										PFT	PPT	
***** Changes From FY2024 Enrolled To FY2024 Authorized *****												
FY2024 Enrolled	Enrolled	3,097.2	2,562.9	45.8	385.2	103.3	0.0	0.0	0.0	18	0	1
1004 Gen Fund		2,138.6										
1061 CIP Rcpts		733.7										
1076 Marine Hwy		224.9										
Subtotal		3,097.2	2,562.9	45.8	385.2	103.3	0.0	0.0	0.0	18	0	1
***** Changes From FY2024 Authorized To FY2024 Management Plan *****												
Transfer Authority to Vessel Operations Management to Align System Authority for CY2024 Operating Plan	Trout	-213.8	-100.3	0.0	-40.2	-73.3	0.0	0.0	0.0	0	0	0
1004 Gen Fund		-213.8										
Transfer authority from Marine Engineering to Vessel Operations Management to align system authority to meet the Calendar Year 2024 Alaska Marine Highway System operating plan.												
Align Authority with Anticipated Expenditures	LIT	0.0	0.0	28.2	-28.2	0.0	0.0	0.0	0.0	0	0	0
Transfer authority from services to cover anticipated travel costs. The remaining services authority is sufficient to cover anticipated expenditures.												
Subtotal		2,883.4	2,462.6	74.0	316.8	30.0	0.0	0.0	0.0	18	0	1
***** Changes From FY2024 Management Plan To FY2025 Governor Adjusted Base *****												
FY2025 Salary, Health Insurance, and PERS Rate Adjustments	SalAdj	54.4	54.4	0.0	0.0	0.0	0.0	0.0	0.0	0	0	0
1004 Gen Fund		32.9										
1061 CIP Rcpts		21.5										
FY2025 Salary, Health Insurance, and PERS Rate Adjustments: \$54.4												
FY2025 AlaskaCare insurance from \$1,793 to \$1,908 per member per month: \$8.1												
FY2025 GGU health insurance from \$1,573.50 to \$1,579.50 per member per month: \$0.4												
FY2025 GGU 5% Cost of Living Adjustment: \$23.3												
FY2025 PERS Rate Adjustment from 25.10% to 26.76%: \$22.6												
Subtotal		2,937.8	2,517.0	74.0	316.8	30.0	0.0	0.0	0.0	18	0	1
***** Changes From FY2025 Governor Adjusted Base To FY2025 Governor *****												

Change Record Detail - Multiple Scenarios with Descriptions
Department of Transportation and Public Facilities

Component: Marine Engineering (2359)
RDU: Marine Highway System (334)

Scenario/Change Record Title	Trans Type	Totals	Personal Services	Travel	Services	Commodities	Capital Outlay	Grants, Benefits	Miscellaneous	Positions		NP
										PFT	PPT	
	Totals	2,937.8	2,517.0	74.0	316.8	30.0	0.0	0.0	0.0	18	0	1

Line Item Detail (1676)
Department of Transportation and Public Facilities
Travel

Component: Marine Engineering (2359)

Line Number	Line Name		FY2023 Actuals	FY2024 Management Plan	FY2025 Governor
2000	Travel		0.0	74.0	74.0
Object Class	Servicing Agency	Explanation	FY2023 Actuals	FY2024 Management Plan	FY2025 Governor
2000 Travel Detail Totals			0.0	74.0	74.0
2000	In-State Employee Travel	Field travel for maintenance workers to remote terminals and for port engineers and vessel constructions staff to travel on non-vessel or non-project specific functions.	0.0	56.0	56.0
2002	Out of State Employee Travel	Out of state travel associated with vessel overhaul projects.	0.0	18.0	18.0

Line Item Detail (1676)
Department of Transportation and Public Facilities
Services

Component: Marine Engineering (2359)

Line Number	Line Name		FY2023 Actuals	FY2024 Management Plan	FY2025 Governor
3000	Services		0.0	316.8	316.8
Object Class	Servicing Agency	Explanation	FY2023 Actuals	FY2024 Management Plan	FY2025 Governor
3000 Services Detail Totals			0.0	316.8	316.8
3000	Education Services	Training for procurement, contract management, software use, and to improve supervisory skills.	0.0	0.5	1.0
3001	Financial Services	Financial Services.	0.0	0.5	0.5
3003	Information Technology	Represents a broad range of data-processing, telecommunications and communications services.	0.0	0.5	1.0
3004	Telecommunications	Local, long distance and cellular phone services.	0.0	35.0	95.0
3005	Health Services	Required drug testing for facility maintenance employees who are required to have commercial driver's license and operate machinery.	0.0	0.2	0.4
3006	Delivery Services	Postage, courier, or freight charges.	0.0	0.1	0.5
3007	Advertising and Promotions	Advertising and local media.	0.0	0.5	0.5
3008	Utilities	Utilities at Ketchikan maintenance facility and office.	0.0	50.0	90.0
3009	Structure/Infrastructure/Land	Inspections and testing for the facilities and janitorial services for the port engineers.	0.0	50.0	5.0
3009	Structure/Infrastructure/Land	Contracted repair and maintenance at terminals for specialized work, including heavy lifting of fender system components and snow plowing.	0.0	0.0	5.0

Line Item Detail (1676)
Department of Transportation and Public Facilities
Services

Component: Marine Engineering (2359)

Object Class	Servicing Agency	Explanation	FY2023 Actuals	FY2024 Management Plan	FY2025 Governor
3000 Services Detail Totals			0.0	316.8	316.8
3010	Equipment/Machinery	Repairs and maintenance to office furniture, office equipment, vehicles, mechanical equipment such as heating, plumbing and electrical. Rental costs of equipment such as man lifts, excavators and saws used in the maintenance of facilities.	0.0	60.0	5.0
3011	Other Services	Safety services such as fire alarm testing and maintenance. Print and copy services.	0.0	1.5	1.0
3017	Inter-Agency Information Technology Non-Telecommunications	Admin - Department-wide Computer services provided by Department of Administration such as central server, data storage, printing, network services, open connect, and task order system.	0.0	32.5	32.5
3018	Inter-Agency Information Technology Telecommunications	Admin - Department-wide Telecommunications services provided by the Department of Administration such as basic telephone services, equipment and features, dedicated voice/data line service, statewide paging, two-way radio and video conferencing.	0.0	7.5	7.5
3020	Inter-Agency Building Maintenance	Labor - Department-wide Boiler and mechanical inspections.	0.0	1.0	0.0
3021	Inter-Agency Mail	Admin - Department-wide Centralized mail services chargeback	0.0	0.2	0.1
3022	Inter-Agency Human Resources	Admin - Department-wide Centralized human resource chargeback	0.0	14.5	14.5
3027	Inter-Agency Financial	Admin - Department-wide Chargeback fees for AKPAY/IRIS/ALDER.	0.0	10.0	10.0
3028	Inter-Agency Americans with Disabilities Act Compliance	Admin - Department-wide Americans with Disabilities Act (ADA) Chargeback	0.0	0.3	0.3
3037	State Equipment Fleet	State Equipment Fleet costs to include fuel services, asset	0.0	2.0	2.0

Line Item Detail (1676)
Department of Transportation and Public Facilities
Services

Component: Marine Engineering (2359)

Object Class	Servicing Agency	Explanation	FY2023 Actuals	FY2024 Management Plan	FY2025 Governor
3000 Services Detail Totals			0.0	316.8	316.8
3037	State Equipment Fleet	Trans - State Equipment Fleet (2791) State equipment fleet vehicles for terminal maintenance.	0.0	50.0	45.0

Line Item Detail (1676)
Department of Transportation and Public Facilities
Commodities

Component: Marine Engineering (2359)

Line Number	Line Name		FY2023 Actuals	FY2024 Management Plan	FY2025 Governor
4000	Commodities		0.0	30.0	30.0
Object Class	Servicing Agency	Explanation	FY2023 Actuals	FY2024 Management Plan	FY2025 Governor
4000 Commodities Detail Totals			0.0	30.0	30.0
4000	Business	Office supplies, equipment, furniture, supplies and subscriptions.	0.0	7.0	7.0
4002	Household/Institutional	Cleaning supplies.	0.0	0.5	2.5
4004	Safety	Safety supplies for facilities maintenance staff.	0.0	0.5	1.0
4013	Lube Oils/Grease/Solvents	Lubricants, oil and grease, anti-freeze, de-icers, cleaning solvents, etc. necessary for the repair and maintenance of fleet vehicles.	0.0	0.5	0.5
4014	Bottled Gas	Bottled gas.	0.0	0.5	0.5
4015	Parts and Supplies	Parts and supplies.	0.0	5.0	5.0
4016	Paint/Preservatives	Paint and preservatives.	0.0	0.2	0.2
4017	Sand	Sand.	0.0	0.3	0.3
4019	Small Tools/Minor Equipment	Small Tools/Minor Equipment.	0.0	15.0	12.0
4020	Equipment Fuel	Fuel for equipment.	0.0	0.5	1.0

Revenue Detail (1681)
Department of Transportation and Public Facilities

Component: Marine Engineering (2359)

Revenue Type (OMB Fund Code) Revenue Source	Component	Comment	FY2023 Actuals	FY2024 Management Plan	FY2025 Governor
5061 CIP Rcpts (1061 CIP Rcpts)			0.0	733.7	755.2
5351 Capital Improvement Project Inter-Agency		Capital improvement project receipts for work in direct support of capital projects.	0.0	247.8	365.7
5351 Capital Improvement Project Inter-Agency		Recovery of indirect costs from the capital budget via the department's Indirect Cost Allocation Plan (ICAP).	0.0	485.9	389.5

Inter-Agency Services (1682)
Department of Transportation and Public Facilities

Component: Marine Engineering (2359)

				FY2023 Actuals	FY2024 Management Plan	FY2025 Governor
Component Totals				0.0	116.0	109.9
With Department of Administration				0.0	65.0	64.9
With Department of Labor and Workforce Development				0.0	1.0	0.0
With Department of Transportation and Public Facilities				0.0	50.0	45.0
Object Class	Servicing Agency	Explanation	FY2023 Actuals	FY2024 Management Plan	FY2025 Governor	
3017	Inter-Agency Information Technology Non-Telecommunications	Admin - Department-wide	Computer services provided by Department of Administration such as central server, data storage, printing, network services, open connect, and task order system.	0.0	32.5	32.5
3018	Inter-Agency Information Technology Telecommunications	Admin - Department-wide	Telecommunications services provided by the Department of Administration such as basic telephone services, equipment and features, dedicated voice/data line service, statewide paging, two-way radio and video conferencing.	0.0	7.5	7.5
3020	Inter-Agency Building Maintenance	Labor - Department-wide	Boiler and mechanical inspections.	0.0	1.0	0.0
3021	Inter-Agency Mail	Admin - Department-wide	Centralized mail services chargeback	0.0	0.2	0.1
3022	Inter-Agency Human Resources	Admin - Department-wide	Centralized human resource chargeback	0.0	14.5	14.5
3027	Inter-Agency Financial	Admin - Department-wide	Chargeback fees for AKPAY//IRIS//ALDER.	0.0	10.0	10.0
3028	Inter-Agency Americans with Disabilities Act Compliance	Admin - Department-wide	Americans with Disabilities Act (ADA) Chargeback	0.0	0.3	0.3
3037	State Equipment Fleet	Trans - State Equipment Fleet (2791)	State equipment fleet vehicles for terminal maintenance.	0.0	50.0	45.0

Personal Services Expenditure Detail
Department of Transportation and Public Facilities

Scenario: FY2025 Governor (20959)
Component: Marine Engineering (2359)
RDU: Marine Highway System (334)

PCN	Job Class Title	Time Status	Retire Code	Barg Unit	Location	Salary Sched	Range / Step	Comp Months	Split / Count	Annual Salaries	COLA	Premium Pay	Annual Benefits	Total Costs	UGF Amount
25-1727	Vessel Construction Manager 3	FT	A	SS	Ketchikan	200	24L / M	12.0		133,890	0	0	80,317	214,207	21,698
25-3153	Stock & Parts Services 2	FT	A	LL	Ketchikan	2AA	55F	12.0		55,234	0	2,988	44,174	102,396	102,396
25-3164	Facilities Manager 1	FT	A	SS	Ketchikan	200	20C / D	12.0		84,838	0	0	59,338	144,176	144,176
25-3173	Vessel Construction Manager 1	FT	A	GP	Ketchikan	200	21A / B	12.0		79,297	5,661	0	52,986	137,944	46,901
25-3176	Vessel Construction Manager 1	FT	A	GP	Ketchikan	200	21A / B	12.0		79,297	5,661	0	52,986	137,944	46,901
25-3180	Vessel Construction Manager 3	FT	A	SS	Ketchikan	200	24Q	12.0		162,182	0	0	92,418	254,600	27,890
25-3181	Vessel Construction Manager 1	FT	A	GP	Ketchikan	200	21A / B	12.0		79,297	5,661	0	52,986	137,944	48,280
25-3240	Office Assistant 3	FT	A	GP	Ketchikan	200	11C / D	12.0		43,134	3,079	0	37,519	83,732	66,986
25-3312	Maint Gen Jrny	FT	A	LL	Ketchikan	2AA	54D / E	12.0		54,788	0	3,930	44,386	103,104	103,104
25-3329	Stock & Parts Services 2	FT	A	LL	Bellingham Wa	2ZZ	55N / O	12.0		64,239	0	3,402	48,203	115,844	115,844
25-3346	Marine Trans Srvs Mgr	FT	A	XE	Ketchikan	N00	25F	12.0		120,140	0	0	74,292	194,432	165,267
25-3361	Maint Gen Jrny	FT	A	LL	Juneau	2AA	54O / P	12.0		75,418	0	3,938	53,213	132,569	132,569
25-3415	Mts/Bfc Jrny 2	FT	A	LL	Ketchikan	2AA	51L / M	12.0		81,337	0	5,671	56,486	143,494	143,494
25-3821	M Eng Asst Mgr	FT	A	SS	Ketchikan	200	23A / B	12.0		95,254	0	0	63,793	159,047	135,190
25-3826	Port Engineer	FT	A	SS	Ketchikan	200	22D / E	12.0		100,084	0	0	65,859	165,943	165,943
25-3870	Administrative Assistant 1	FT	A	GP	Ketchikan	200	12G / J	12.0		51,747	3,694	0	41,203	96,644	77,315
25-N08037	Stock & Parts Services 2	NP	A	LL	Ketchikan	2AA	55A	4.0		15,500	0	0	2,124	17,624	17,624
													Total Salary Costs:	1,375,676	
													Total COLA:	23,756	
													Total Premium Pay:	19,929	
													Total Benefits:	922,283	
													Total Pre-Vacancy:	2,341,644	
													Minus Vacancy Adjustment of 3.19%:	(74,644)	
													Total Post-Vacancy:	2,267,000	
													Plus Lump Sum Premium Pay:	250,000	
													Personal Services Line 100:	2,517,000	
Total Component Months:		196.0													
Positions in Component:		17	New	0	Deleted	0									
Full Time Positions:		16	0	0											
Part Time Positions:		0	0	0											
Non Permanent Positions:		1	0	0											

Note: If a position is split, an asterisk (*) will appear in the Split/Count column. If the split position is also counted in the component, two asterisks (**) will appear in this column. [No valid job title] appearing in the Job Class Title indicates that the PCN has an invalid class code or invalid range for the class code effective date of this scenario.

Personal Services Expenditure Detail
Department of Transportation and Public Facilities

Scenario: FY2025 Governor (20959)
Component: Marine Engineering (2359)
RDU: Marine Highway System (334)

PCN Funding Sources:	Pre-Vacancy	Post-Vacancy	Percent
1004 Unrestricted General Fund Receipts	1,561,578	1,511,800	66.69%
1039 Unallocated Indirect Cost Recovery	402,325	389,500	17.18%
1061 Capital Improvement Project Receipts	377,741	365,700	16.13%
Total PCN Funding:	2,341,644	2,267,000	100.00%

Lump Sum Funding Sources:	Amount	Percent
1061 Unrestricted General Fund Receipts	250,000	100.00%
Total Lump Sum Funding:	250,000	100.00%

Note: If a position is split, an asterisk (*) will appear in the Split/Count column. If the split position is also counted in the component, two asterisks (**) will appear in this column.
 [No valid job title] appearing in the Job Class Title indicates that the PCN has an invalid class code or invalid range for the class code effective date of this scenario.

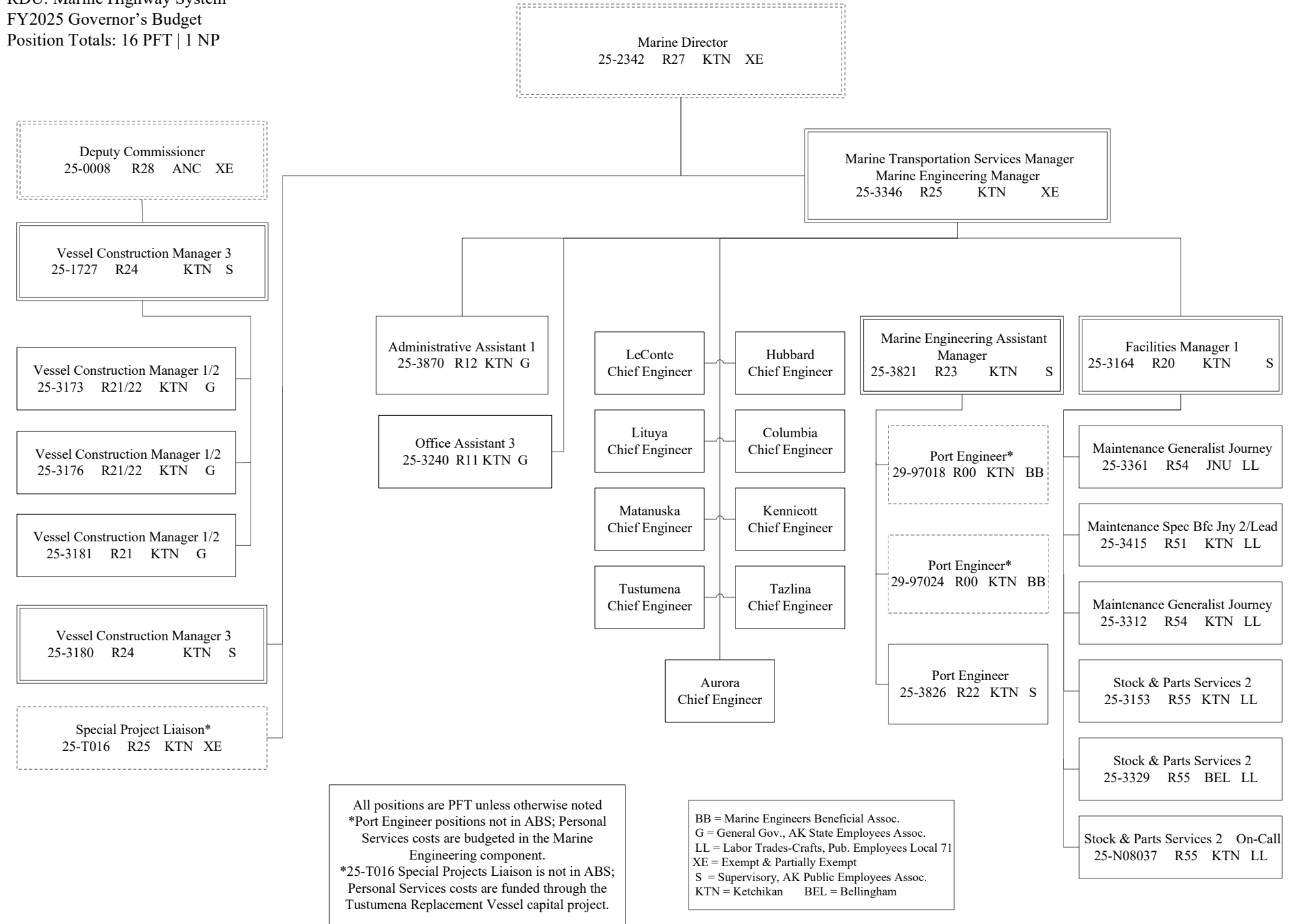
Department of Transportation & Public Facilities

Marine Engineering (2359)

RDU: Marine Highway System

FY2025 Governor's Budget

Position Totals: 16 PFT | 1 NP



All positions are PFT unless otherwise noted
 *Port Engineer positions not in ABS; Personal Services costs are budgeted in the Marine Engineering component.
 *25-T016 Special Projects Liaison is not in ABS; Personal Services costs are funded through the Tustumena Replacement Vessel capital project.

BB = Marine Engineers Beneficial Assoc.
 G = General Gov., AK State Employees Assoc.
 LL = Labor Trades-Crafts, Pub. Employees Local 71
 XE = Exempt & Partially Exempt
 S = Supervisory, AK Public Employees Assoc.
 KTN = Ketchikan BEL = Bellingham